

Test Laboratory: Sporton International Inc.

Device Under Test Properties

Manufacturer	Dimensions [mm]	DUT Type
Asus	156.0 x 76.0 x 8.0	Phone

Exposure Conditions

Phantom Section	Position, Test Distance [mm]	Frequency [MHz]	Conversion Factor
5G	BACK, 2.00	60000.0	1.0

Hardware Setup

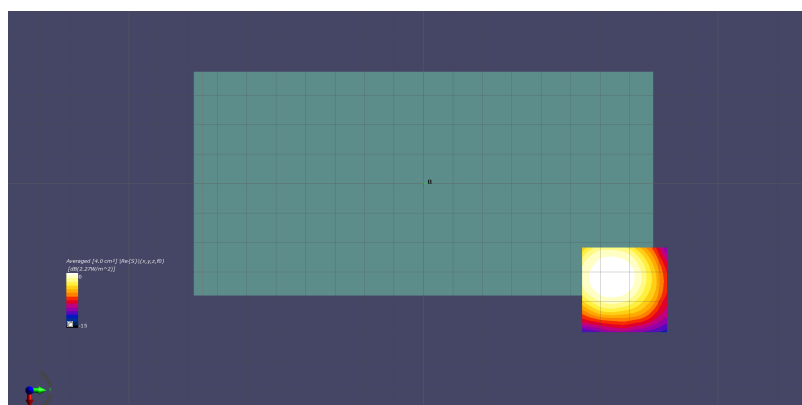
Phantom	Medium	Probe, Calibration Date	DAE, Calibration Date
5G Cover	Air -	EUmmWV2 - SN9388, 2018-04-10	DAE4 Sn854, 2018-06-14

Scans Setup

Grid Extents [mm]	50.0 x 50.0
Grid Steps [lambda]	0.25 x 0.25
Sensor Surface [mm]	2.0

Measurement Results

Date	2018-07-25, 17:35
Avg. Area [cm ²]	4.00
S _{avg inc} [W/m ²]	1.66
S _{avg tot} [W/m ²]	2.27
S _{peak} [W/m ²]	9.15
E _{peak} [V/m]	61.2
H _{peak} [A/m]	0.173



Test Laboratory: Sporton International Inc.

Device Under Test Properties

Manufacturer	Dimensions [mm]	DUT Type
Asus	156.0 x 76.0 x 8.0	Phone

Exposure Conditions

Phantom Section	Position, Test Distance [mm]	Frequency [MHz]	Conversion Factor
5G	BACK, 2.00	58320.0	1.0

Hardware Setup

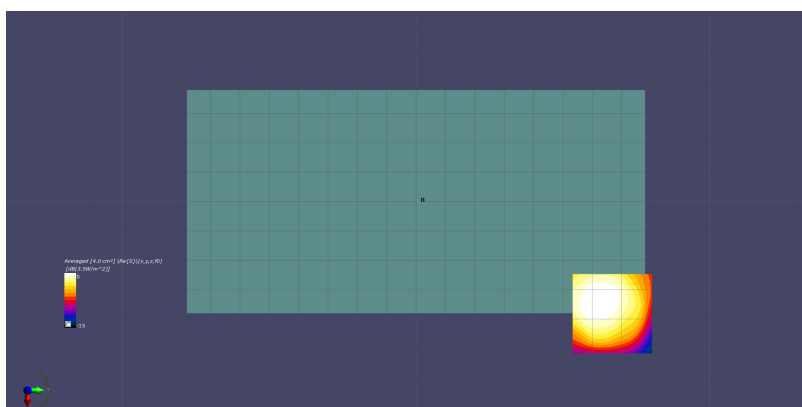
Phantom	Medium	Probe, Calibration Date	DAE, Calibration Date
5G Cover	Air -	EUmmWV2 - SN9388, 2018-04-10	DAE4 Sn854, 2018-06-14

Scans Setup

Grid Extents [mm]	50.0 x 50.0
Grid Steps [lambda]	0.25 x 0.25
Sensor Surface [mm]	2.0

Measurement Results

Date	2018-07-27, 14:01
Avg. Area [cm ²]	4.00
S _{avg inc} [W/m ²]	2.68
S _{avg tot} [W/m ²]	3.50
S _{peak} [W/m ²]	16.7
E _{peak} [V/m]	81.9
H _{peak} [A/m]	0.218



Test Laboratory: Sporton International Inc.

Device Under Test Properties

Manufacturer	Dimensions [mm]	DUT Type
Asus	156.0 x 76.0 x 8.0	Phone

Exposure Conditions

Phantom Section	Position, Test Distance [mm]	Frequency [MHz]	Conversion Factor
5G	BACK, 2.00	62640.0	1.0

Hardware Setup

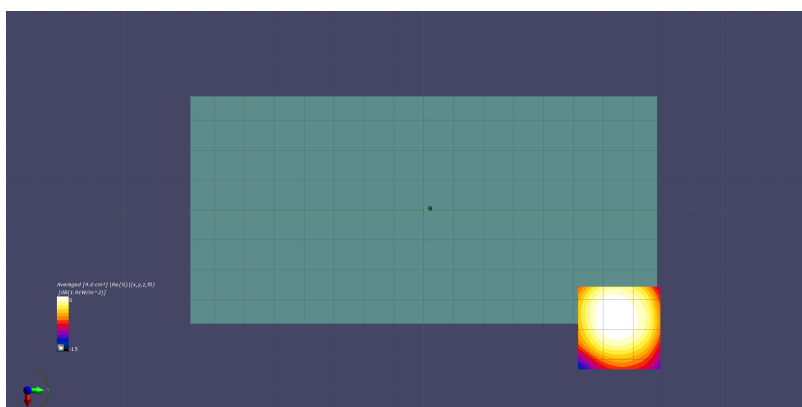
Phantom	Medium	Probe, Calibration Date	DAE, Calibration Date
5G Cover	Air -	EUmmWV2 - SN9388, 2018-04-10	DAE4 Sn917, 2017-12-14

Scans Setup

Grid Extents [mm]	50.0 x 50.0
Grid Steps [lambda]	0.25 x 0.25
Sensor Surface [mm]	2.0

Measurement Results

Date	2018-09-28, 16:34
Avg. Area [cm ²]	4.00
S _{avg inc} [W/m ²]	1.33
S _{avg tot} [W/m ²]	1.91
S _{peak} [W/m ²]	8.40
E _{peak} [V/m]	56.8
H _{peak} [A/m]	0.158



Test Laboratory: Sporton International Inc.

Device Under Test Properties

Manufacturer	Dimensions [mm]	DUT Type
Asus	156.0 x 76.0 x 8.0	Phone

Exposure Conditions

Phantom Section	Position, Test Distance [mm]	Frequency [MHz]	Conversion Factor
5G	BACK, 2.00	60480.0	1.0

Hardware Setup

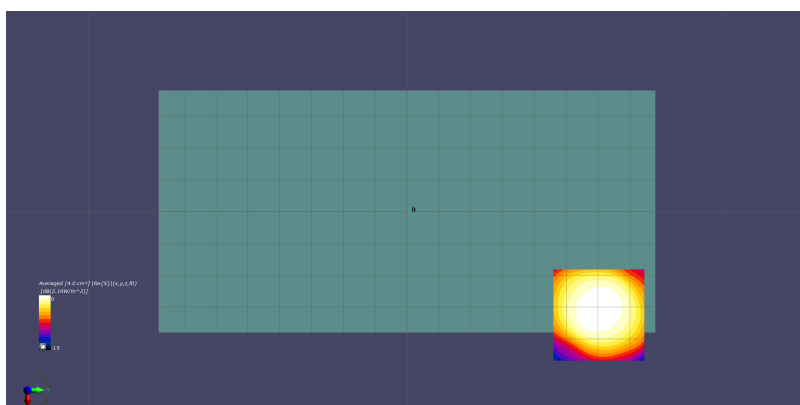
Phantom	Medium	Probe, Calibration Date	DAE, Calibration Date
5G Cover	Air -	EUmmWV2 - SN9388, 2018-04-10	DAE4 Sn917, 2017-12-14

Scans Setup

Grid Extents [mm]	50.0 x 50.0
Grid Steps [lambda]	0.25 x 0.25
Sensor Surface [mm]	2.0

Measurement Results

Date	2018-09-29, 00:39
Avg. Area [cm ²]	4.00
S _{avg inc} [W/m ²]	1.48
S _{avg tot} [W/m ²]	2.19
S _{peak} [W/m ²]	11.1
E _{peak} [V/m]	68.1
H _{peak} [A/m]	0.198



Test Laboratory: Sporton International Inc.

Device Under Test Properties

Manufacturer	Dimensions [mm]	DUT Type
Asus	156.0 x 76.0 x 8.0	Phone

Exposure Conditions

Phantom Section	Position, Test Distance [mm]	Frequency [MHz]	Conversion Factor
5G	BACK, 2.00	58320.0	1.0

Hardware Setup

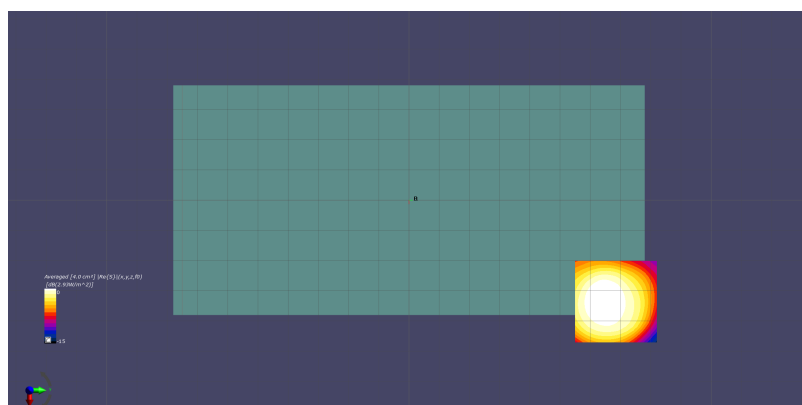
Phantom	Medium	Probe, Calibration Date	DAE, Calibration Date
5G Cover	Air -	EUmmWV2 - SN9388, 2018-04-10	DAE4 Sn910, 2018-06-21

Scans Setup

Grid Extents [mm]	50.0 x 50.0
Grid Steps [lambda]	0.25 x 0.25
Sensor Surface [mm]	2.0

Measurement Results

Date	2018-10-04, 22:30
Avg. Area [cm ²]	4.00
S _{avg inc} [W/m ²]	2.28
S _{avg tot} [W/m ²]	2.93
S _{peak} [W/m ²]	13.3
E _{peak} [V/m]	70.4
H _{peak} [A/m]	0.194



Test Laboratory: Sporton International Inc.

Device Under Test Properties

Manufacturer	Dimensions [mm]	DUT Type
Asus	156.0 x 76.0 x 8.0	Phone

Exposure Conditions

Phantom Section	Position, Test Distance [mm]	Frequency [MHz]	Conversion Factor
5G	BACK, 2.00	60480.0	1.0

Hardware Setup

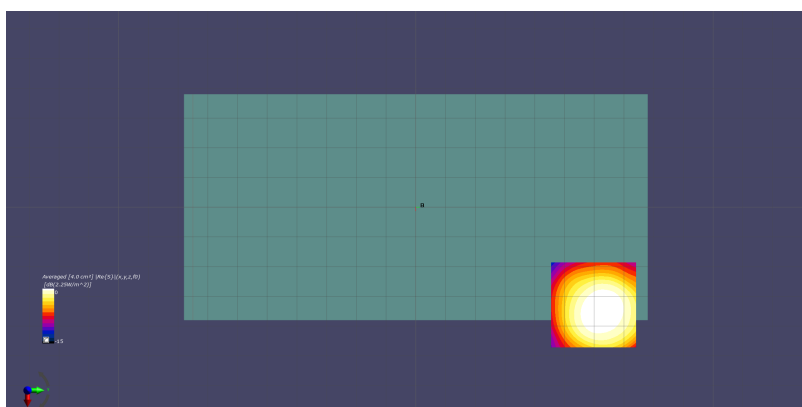
Phantom	Medium	Probe, Calibration Date	DAE, Calibration Date
5G Cover	Air -	EUmmWV2 - SN9388, 2018-04-10	DAE4 Sn917, 2017-12-14

Scans Setup

Grid Extents [mm]	50.0 x 50.0
Grid Steps [lambda]	0.25 x 0.25
Sensor Surface [mm]	2.0

Measurement Results

Date	2018-09-29, 20:30
Avg. Area [cm ²]	4.00
S _{avg inc} [W/m ²]	1.54
S _{avg tot} [W/m ²]	2.25
S _{peak} [W/m ²]	10.8
E _{peak} [V/m]	63.5
H _{peak} [A/m]	0.190



Test Laboratory: Sporton International Inc.

Device Under Test Properties

Manufacturer	Dimensions [mm]	DUT Type
Asus	156.0 x 76.0 x 8.0	Phone

Exposure Conditions

Phantom Section	Position, Test Distance [mm]	Frequency [MHz]	Conversion Factor
5G	EDGE RIGHT, 2.00	60480.0	1.0

Hardware Setup

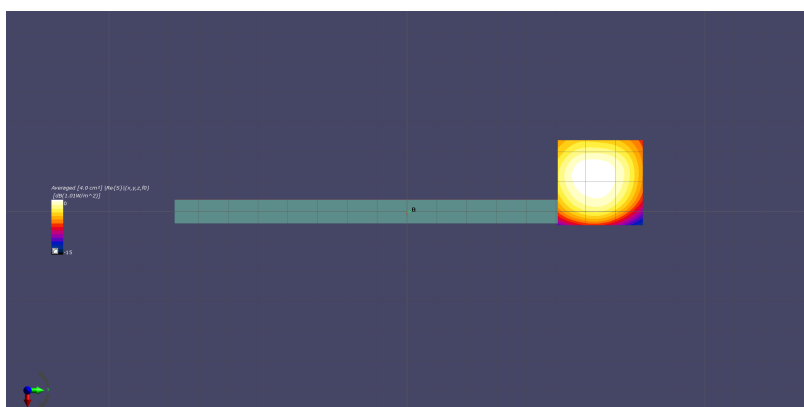
Phantom	Medium	Probe, Calibration Date	DAE, Calibration Date
5G Cover	Air -	EUmmWV2 - SN9388, 2018-04-10	DAE4 Sn917, 2017-12-14

Scans Setup

Grid Extents [mm]	50.0 x 50.0
Grid Steps [lambda]	0.25 x 0.25
Sensor Surface [mm]	2.0

Measurement Results

Date	2018-09-30, 02:06
Avg. Area [cm ²]	4.00
S _{avg inc} [W/m ²]	0.708
S _{avg tot} [W/m ²]	1.01
S _{peak} [W/m ²]	2.81
E _{peak} [V/m]	33.5
H _{peak} [A/m]	0.088



Test Laboratory: Sporton International Inc.

Device Under Test Properties

Manufacturer	Dimensions [mm]	DUT Type
Asus	156.0 x 76.0 x 8.0	Phone

Exposure Conditions

Phantom Section	Position, Test Distance [mm]	Frequency [MHz]	Conversion Factor
5G	FRONT, 2.00	60480.0	1.0

Hardware Setup

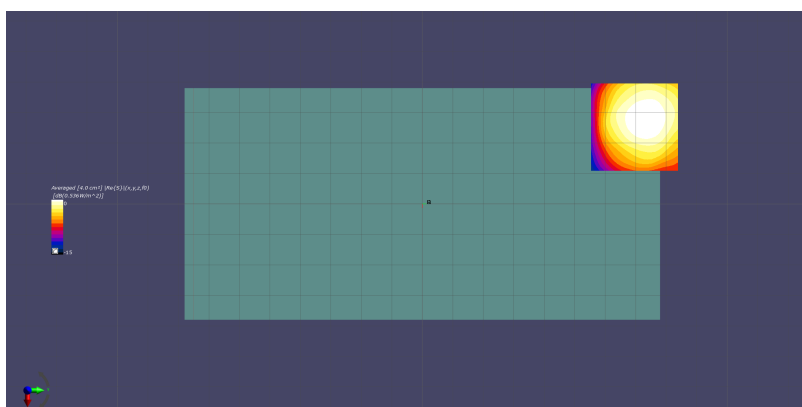
Phantom	Medium	Probe, Calibration Date	DAE, Calibration Date
5G Cover	Air -	EUmmWV2 - SN9388, 2018-04-10	DAE4 Sn917, 2017-12-14

Scans Setup

Grid Extents [mm]	50.0 x 50.0
Grid Steps [lambda]	0.25 x 0.25
Sensor Surface [mm]	2.0

Measurement Results

Date	2018-09-30, 11:11
Avg. Area [cm ²]	4.00
S _{avg inc} [W/m ²]	0.395
S _{avg tot} [W/m ²]	0.536
S _{peak} [W/m ²]	2.43
E _{peak} [V/m]	29.6
H _{peak} [A/m]	0.086



Test Laboratory: Sporton International Inc.

Device Under Test Properties

Manufacturer	Dimensions [mm]	DUT Type
Asus	156.0 x 76.0 x 8.0	Phone

Exposure Conditions

Phantom Section	Position, Test Distance [mm]	Frequency [MHz]	Conversion Factor
5G	FRONT, 2.00	58320.0	1.0

Hardware Setup

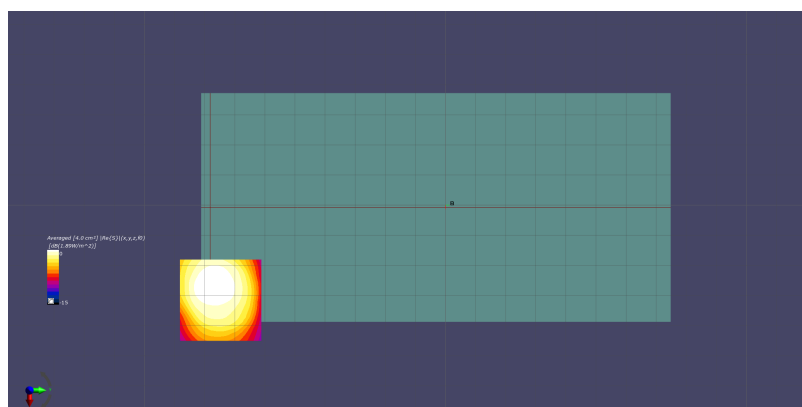
Phantom	Medium	Probe, Calibration Date	DAE, Calibration Date
5G Cover	Air -	EUmmWV2 - SN9388, 2018-04-10	DAE4 Sn854, 2018-06-14

Scans Setup

Grid Extents [mm]	50.0 x 50.0
Grid Steps [lambda]	0.25 x 0.25
Sensor Surface [mm]	2.0

Measurement Results

Date	2018-07-30, 14:53
Avg. Area [cm ²]	4.00
S _{avg inc} [W/m ²]	1.18
S _{avg tot} [W/m ²]	1.89
S _{peak} [W/m ²]	16.7
E _{peak} [V/m]	78.1
H _{peak} [A/m]	0.235



Test Laboratory: Sporton International Inc.

Device Under Test Properties

Manufacturer	Dimensions [mm]	DUT Type
Asus	156.0 x 76.0 x 8.0	Phone

Exposure Conditions

Phantom Section	Position, Test Distance [mm]	Frequency [MHz]	Conversion Factor
5G	FRONT, 2.00	62640.0	1.0

Hardware Setup

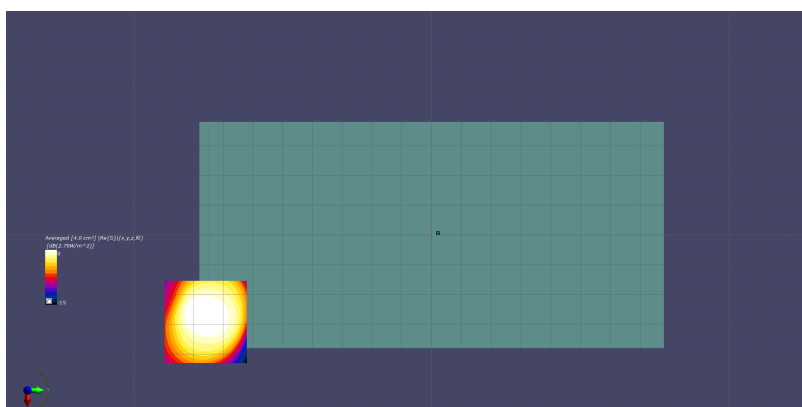
Phantom	Medium	Probe, Calibration Date	DAE, Calibration Date
5G Cover	Air -	EUmmWV2 - SN9388, 2018-04-10	DAE4 Sn854, 2018-06-14

Scans Setup

Grid Extents [mm]	50.0 x 50.0
Grid Steps [lambda]	0.25 x 0.25
Sensor Surface [mm]	2.0

Measurement Results

Date	2018-07-30, 18:57
Avg. Area [cm ²]	4.00
S _{avg inc} [W/m ²]	1.83
S _{avg tot} [W/m ²]	2.79
S _{peak} [W/m ²]	19.1
E _{peak} [V/m]	87.6
H _{peak} [A/m]	0.247



Test Laboratory: Sporton International Inc.

Device Under Test Properties

Manufacturer	Dimensions [mm]	DUT Type
Asus	156.0 x 76.0 x 8.0	Phone

Exposure Conditions

Phantom Section	Position, Test Distance [mm]	Frequency [MHz]	Conversion Factor
5G	FRONT, 2.00	62640.0	1.0

Hardware Setup

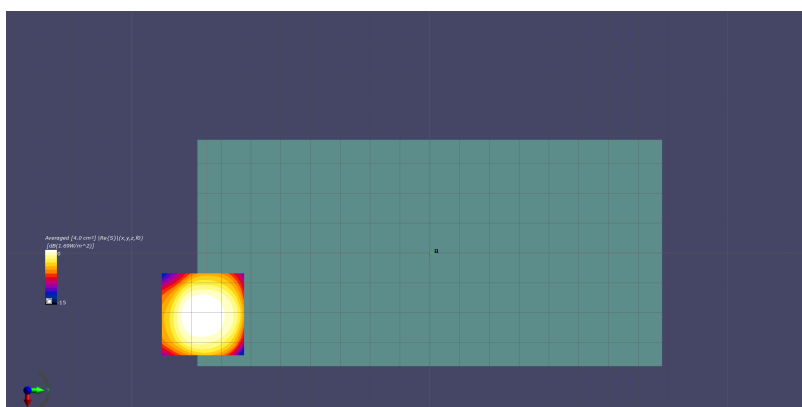
Phantom	Medium	Probe, Calibration Date	DAE, Calibration Date
5G Cover	Air -	EUmmWV2 - SN9388, 2018-04-10	DAE4 Sn854, 2018-06-14

Scans Setup

Grid Extents [mm]	50.0 x 50.0
Grid Steps [lambda]	0.25 x 0.25
Sensor Surface [mm]	2.0

Measurement Results

Date	2018-08-01, 18:40
Avg. Area [cm ²]	4.00
S _{avg inc} [W/m ²]	1.10
S _{avg tot} [W/m ²]	1.69
S _{peak} [W/m ²]	12.7
E _{peak} [V/m]	65.1
H _{peak} [A/m]	0.197



Test Laboratory: Sporton International Inc.

Device Under Test Properties

Manufacturer	Dimensions [mm]	DUT Type
Asus	156.0 x 76.0 x 8.0	Phone

Exposure Conditions

Phantom Section	Position, Test Distance [mm]	Frequency [MHz]	Conversion Factor
5G	FRONT, 2.00	58320.0	1.0

Hardware Setup

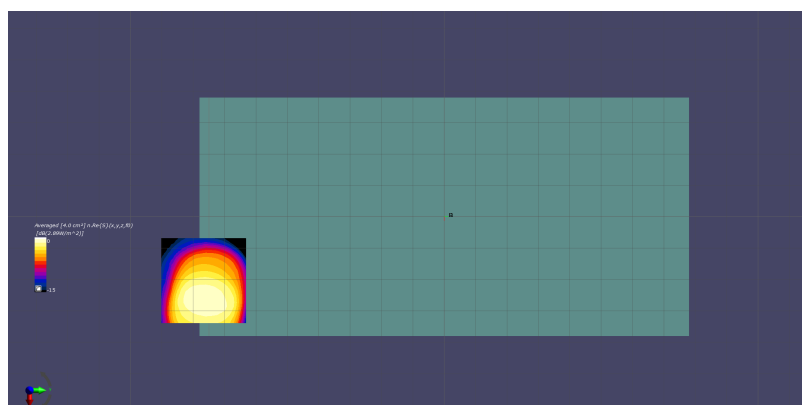
Phantom	Medium	Probe, Calibration Date	DAE, Calibration Date
5G Cover	Air -	EUmmWV2 - SN9388, 2018-04-10	DAE4 Sn917, 2017-12-14

Scans Setup

Grid Extents [mm]	50.0 x 50.0
Grid Steps [lambda]	0.25 x 0.25
Sensor Surface [mm]	2.0

Measurement Results

Date	2018-09-30, 18:48
Avg. Area [cm ²]	4.00
S _{avg inc} [W/m ²]	2.16
S _{avg tot} [W/m ²]	2.89
S _{peak} [W/m ²]	30.4
E _{peak} [V/m]	97.5
H _{peak} [A/m]	0.388



Test Laboratory: Sporton International Inc.

Device Under Test Properties

Manufacturer	Dimensions [mm]	DUT Type
Asus	156.0 x 76.0 x 8.0	Phone

Exposure Conditions

Phantom Section	Position, Test Distance [mm]	Frequency [MHz]	Conversion Factor
5G	FRONT, 2.00	60480.0	1.0

Hardware Setup

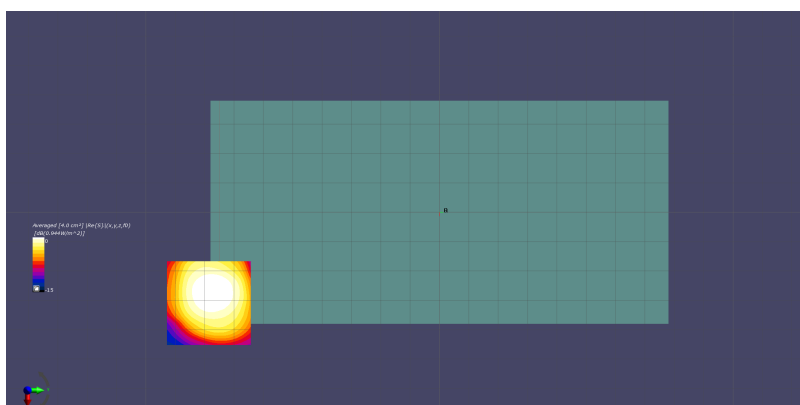
Phantom	Medium	Probe, Calibration Date	DAE, Calibration Date
5G Cover	Air -	EUmmWV2 - SN9388, 2018-04-10	DAE4 Sn917, 2017-12-14

Scans Setup

Grid Extents [mm]	50.0 x 50.0
Grid Steps [lambda]	0.25 x 0.25
Sensor Surface [mm]	2.0

Measurement Results

Date	2018-09-30, 22:47
Avg. Area [cm ²]	4.00
S _{avg inc} [W/m ²]	0.662
S _{avg tot} [W/m ²]	0.944
S _{peak} [W/m ²]	5.36
E _{peak} [V/m]	45.3
H _{peak} [A/m]	0.126



Test Laboratory: Sporton International Inc.

Device Under Test Properties

Manufacturer	Dimensions [mm]	DUT Type
Asus	156.0 x 76.0 x 8.0	Phone

Exposure Conditions

Phantom Section	Position, Test Distance [mm]	Frequency [MHz]	Conversion Factor
5G	FRONT, 2.00	60480.0	1.0

Hardware Setup

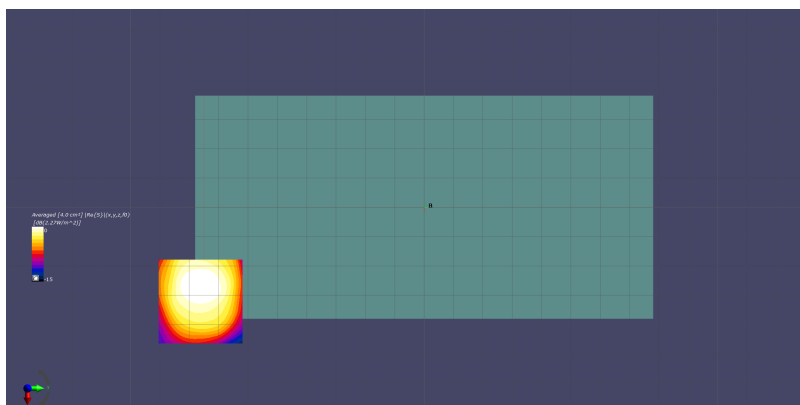
Phantom	Medium	Probe, Calibration Date	DAE, Calibration Date
5G Cover	Air -	EUmmWV2 - SN9388, 2018-04-10	DAE4 Sn910, 2018-06-21

Scans Setup

Grid Extents [mm]	50.0 x 50.0
Grid Steps [lambda]	0.25 x 0.25
Sensor Surface [mm]	2.0

Measurement Results

Date	2018-10-04, 18:21
Avg. Area [cm ²]	4.00
S _{avg inc} [W/m ²]	1.65
S _{avg tot} [W/m ²]	2.27
S _{peak} [W/m ²]	15.7
E _{peak} [V/m]	74.7
H _{peak} [A/m]	0.223



Test Laboratory: Sporton International Inc.

Device Under Test Properties

Manufacturer	Dimensions [mm]	DUT Type
Asus	156.0 x 76.0 x 8.0	Phone

Exposure Conditions

Phantom Section	Position, Test Distance [mm]	Frequency [MHz]	Conversion Factor
5G	FRONT, 2.00	62640.0	1.0

Hardware Setup

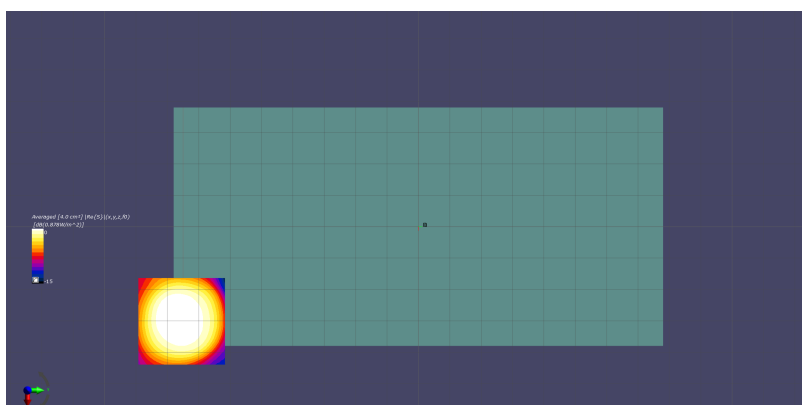
Phantom	Medium	Probe, Calibration Date	DAE, Calibration Date
5G Cover	Air -	EUmmWV2 - SN9388, 2018-04-10	DAE4 Sn917, 2017-12-14

Scans Setup

Grid Extents [mm]	50.0 x 50.0
Grid Steps [lambda]	0.25 x 0.25
Sensor Surface [mm]	2.0

Measurement Results

Date	2018-10-01, 12:57
Avg. Area [cm ²]	4.00
S _{avg inc} [W/m ²]	0.587
S _{avg tot} [W/m ²]	0.878
S _{peak} [W/m ²]	7.04
E _{peak} [V/m]	53.6
H _{peak} [A/m]	0.141



Test Laboratory: Sporton International Inc.

Device Under Test Properties

Manufacturer	Dimensions [mm]	DUT Type
Asus	156.0 x 76.0 x 8.0	Phone

Exposure Conditions

Phantom Section	Position, Test Distance [mm]	Frequency [MHz]	Conversion Factor
5G	FRONT, 2.00	58320.0	1.0

Hardware Setup

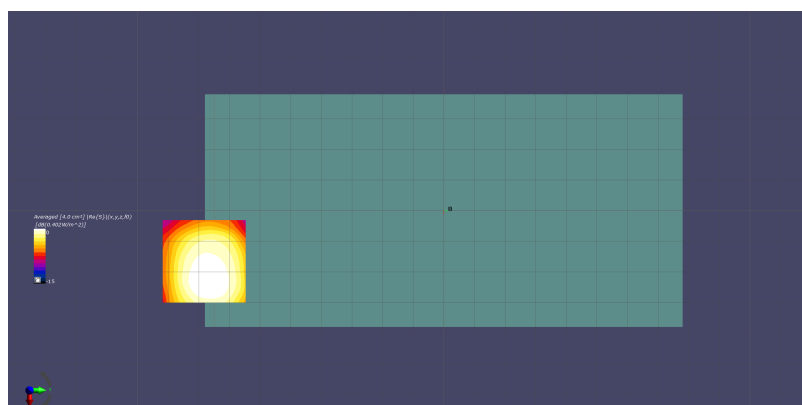
Phantom	Medium	Probe, Calibration Date	DAE, Calibration Date
5G Cover	Air -	EUmmWV2 - SN9388, 2018-04-10	DAE4 Sn917, 2017-12-14

Scans Setup

Grid Extents [mm]	50.0 x 50.0
Grid Steps [lambda]	0.25 x 0.25
Sensor Surface [mm]	2.0

Measurement Results

Date	2018-10-01, 17:02
Avg. Area [cm ²]	4.00
S _{avg inc} [W/m ²]	0.262
S _{avg tot} [W/m ²]	0.402
S _{peak} [W/m ²]	2.59
E _{peak} [V/m]	30.0
H _{peak} [A/m]	0.093



Test Laboratory: Sporton International Inc.

Device Under Test Properties

Manufacturer	Dimensions [mm]	DUT Type
Asus	156.0 x 76.0 x 8.0	Phone

Exposure Conditions

Phantom Section	Position, Test Distance [mm]	Frequency [MHz]	Conversion Factor
5G	EDGE LEFT, 2.00	60480.0	1.0

Hardware Setup

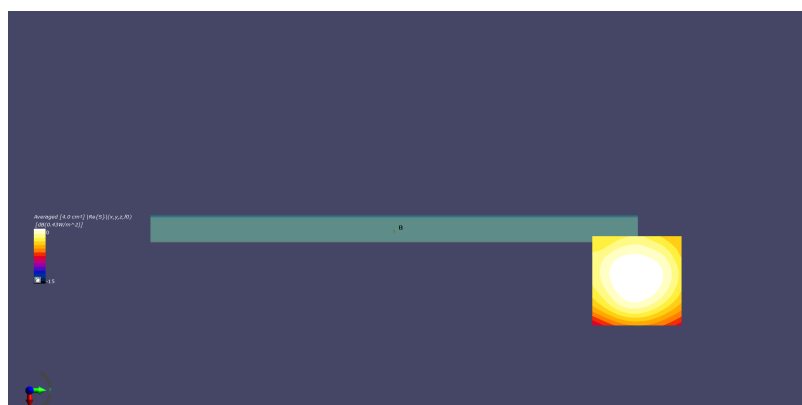
Phantom	Medium	Probe, Calibration Date	DAE, Calibration Date
5G Cover	Air -	EUmmWV2 - SN9388, 2018-04-10	DAE4 Sn1424, 2018-01-18

Scans Setup

Grid Extents [mm]	50.0 x 50.0
Grid Steps [lambda]	0.25 x 0.25
Sensor Surface [mm]	2.0

Measurement Results

Date	2018-08-02, 14:59
Avg. Area [cm ²]	4.00
S _{avg inc} [W/m ²]	0.354
S _{avg tot} [W/m ²]	0.430
S _{peak} [W/m ²]	1.39
E _{peak} [V/m]	23.0
H _{peak} [A/m]	0.070



Test Laboratory: Sporton International Inc.

Device Under Test Properties

Manufacturer	Dimensions [mm]	DUT Type
Asus	156.0 x 76.0 x 8.0	Phone

Exposure Conditions

Phantom Section	Position, Test Distance [mm]	Frequency [MHz]	Conversion Factor
5G	EDGE TOP, 2.00	62640.0	1.0

Hardware Setup

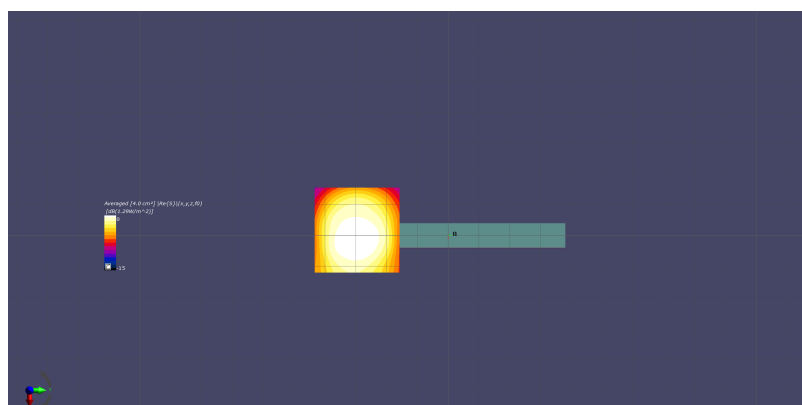
Phantom	Medium	Probe, Calibration Date	DAE, Calibration Date
5G Cover	Air -	EUmmWV2 - SN9388, 2018-04-10	DAE4 Sn1424, 2018-01-18

Scans Setup

Grid Extents [mm]	50.0 x 50.0
Grid Steps [lambda]	0.25 x 0.25
Sensor Surface [mm]	2.0

Measurement Results

Date	2018-08-02, 18:56
Avg. Area [cm ²]	4.00
S _{avg inc} [W/m ²]	1.03
S _{avg tot} [W/m ²]	1.29
S _{peak} [W/m ²]	6.07
E _{peak} [V/m]	49.1
H _{peak} [A/m]	0.153



Test Laboratory: Sporton International Inc.

Device Under Test Properties

Manufacturer	Dimensions [mm]	DUT Type
Asus	156.0 x 76.0 x 8.0	Phone

Exposure Conditions

Phantom Section	Position, Test Distance [mm]	Frequency [MHz]	Conversion Factor
5G	BACK, 2.00	60480.0	1.0

Hardware Setup

Phantom	Medium	Probe, Calibration Date	DAE, Calibration Date
5G Cover	Air -	EUmmWV2 - SN9388, 2018-04-10	DAE4 Sn854, 2018-06-14

Scans Setup

Grid Extents [mm]	50.0 x 50.0
Grid Steps [lambda]	0.25 x 0.25
Sensor Surface [mm]	2.0

Measurement Results

Date	2018-08-01, 22:33
Avg. Area [cm ²]	4.00
S _{avg inc} [W/m ²]	0.459
S _{avg tot} [W/m ²]	0.636
S _{peak} [W/m ²]	2.24
E _{peak} [V/m]	30.9
H _{peak} [A/m]	0.087

