

Test Laboratory: Sporton International Inc.

Device Under Test Properties

Manufacturer	Dimensions [mm]	DUT Type
	100.0 x 100.0 x 100.0	Phone

Exposure Conditions

Phantom Section	Position, Test Distance [mm]	Frequency [MHz]	Conversion Factor
5G	FRONT, 5.55	60000.0	1.0

Hardware Setup

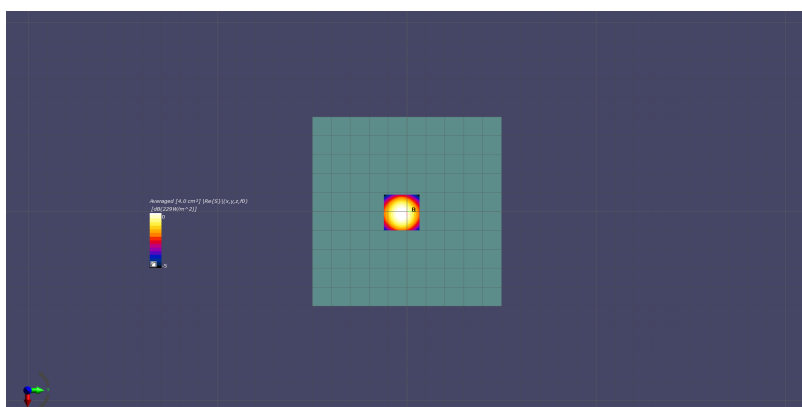
Phantom	Medium	Probe, Calibration Date	DAE, Calibration Date
5G Cover	Air -	EUmmWV2 - SN9388, 2018-04-10	DAE4 Sn854, 2018-06-14

Scans Setup

Grid Extents [mm]	40.0 x 40.0
Grid Steps [lambda]	0.25 x 0.25
Sensor Surface [mm]	5.55

Measurement Results

Date	2018-07-25, 10:26
Avg. Area [cm ²]	4.00
S _{avg inc} [W/m ²]	226
S _{avg tot} [W/m ²]	229
S _{peak} [W/m ²]	446
E _{peak} [V/m]	416
H _{peak} [A/m]	1.08



Test Laboratory: Sporton International Inc.

Device Under Test Properties

Manufacturer	Dimensions [mm]	DUT Type
	100.0 x 100.0 x 100.0	Phone

Exposure Conditions

Phantom Section	Position, Test Distance [mm]	Frequency [MHz]	Conversion Factor
5G	FRONT, 5.55	60000.0	1.0

Hardware Setup

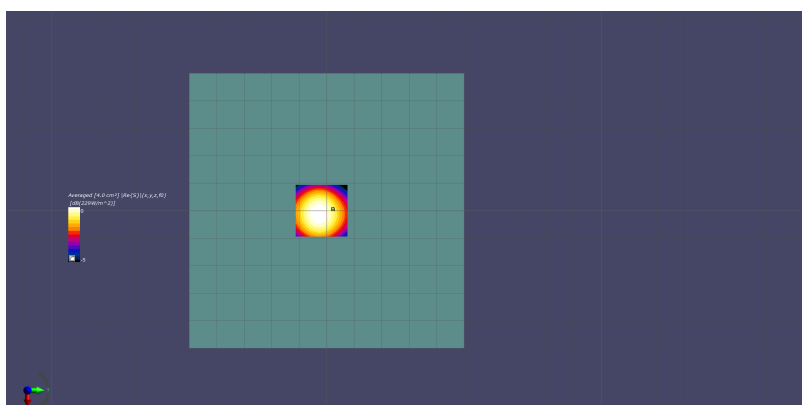
Phantom	Medium	Probe, Calibration Date	DAE, Calibration Date
5G Cover	Air -	EUmmWV2 - SN9388, 2018-04-10	DAE4 Sn854, 2018-06-14

Scans Setup

Grid Extents [mm]	40.0 x 40.0
Grid Steps [lambda]	0.25 x 0.25
Sensor Surface [mm]	5.55

Measurement Results

Date	2018-07-27, 01:02
Avg. Area [cm ²]	4.00
S _{avg inc} [W/m ²]	226
S _{avg tot} [W/m ²]	229
S _{peak} [W/m ²]	460
E _{peak} [V/m]	416
H _{peak} [A/m]	1.11



Test Laboratory: Sporton International Inc.

Device Under Test Properties

Manufacturer	Dimensions [mm]	DUT Type
	100.0 x 100.0 x 100.0	Phone

Exposure Conditions

Phantom Section	Position, Test Distance [mm]	Frequency [MHz]	Conversion Factor
5G	FRONT, 5.55	60000.0	1.0

Hardware Setup

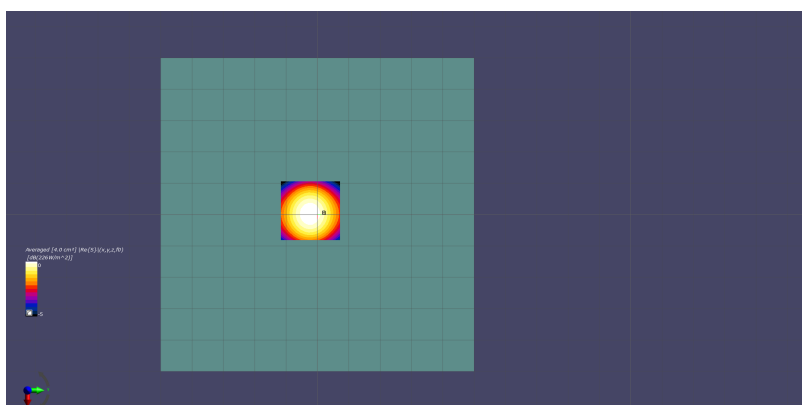
Phantom	Medium	Probe, Calibration Date	DAE, Calibration Date
5G Cover	Air -	EUmmWV2 - SN9388, 2018-04-10	DAE4 Sn854, 2018-06-14

Scans Setup

Grid Extents [mm]	40.0 x 40.0
Grid Steps [lambda]	0.25 x 0.25
Sensor Surface [mm]	5.55

Measurement Results

Date	2018-07-30, 01:14
Avg. Area [cm ²]	4.00
S _{avg inc} [W/m ²]	222
S _{avg tot} [W/m ²]	226
S _{peak} [W/m ²]	453
E _{peak} [V/m]	418
H _{peak} [A/m]	1.08



Test Laboratory: Sporton International Inc.

Device Under Test Properties

Manufacturer	Dimensions [mm]	DUT Type
	100.0 x 100.0 x 100.0	Phone

Exposure Conditions

Phantom Section	Position, Test Distance [mm]	Frequency [MHz]	Conversion Factor
5G	FRONT, 5.55	60000.0	1.0

Hardware Setup

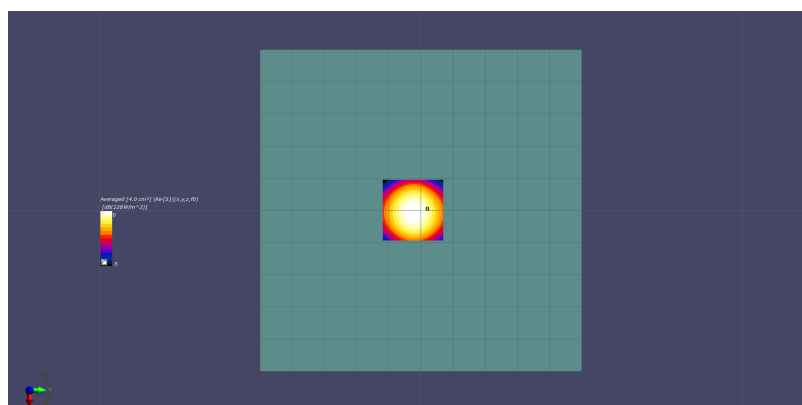
Phantom	Medium	Probe, Calibration Date	DAE, Calibration Date
5G Cover	Air -	EUmmWV2 - SN9388, 2018-04-10	DAE4 Sn854, 2018-06-14

Scans Setup

Grid Extents [mm]	40.0 x 40.0
Grid Steps [lambda]	0.25 x 0.25
Sensor Surface [mm]	5.55

Measurement Results

Date	2018-08-01, 00:54
Avg. Area [cm ²]	4.00
S _{avg inc} [W/m ²]	225
S _{avg tot} [W/m ²]	228
S _{peak} [W/m ²]	453
E _{peak} [V/m]	414
H _{peak} [A/m]	1.10



Test Laboratory: Sporton International Inc.

Device Under Test Properties

Manufacturer	Dimensions [mm]	DUT Type
	100.0 x 100.0 x 100.0	Phone

Exposure Conditions

Phantom Section	Position, Test Distance [mm]	Frequency [MHz]	Conversion Factor
5G	FRONT, 5.55	60000.0	1.0

Hardware Setup

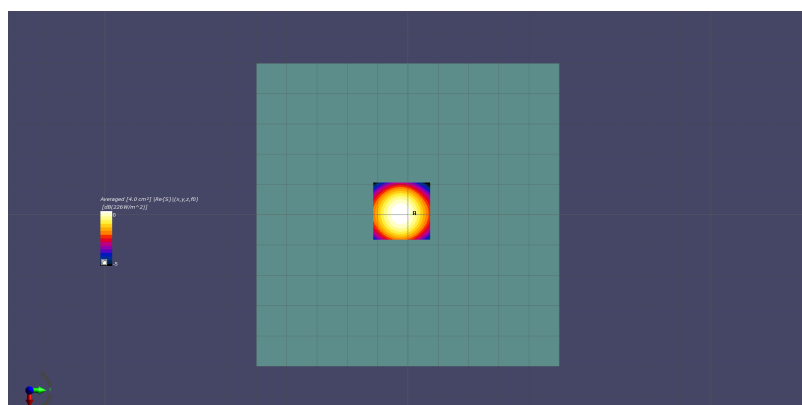
Phantom	Medium	Probe, Calibration Date	DAE, Calibration Date
5G Cover	Air -	EUmmWV2 - SN9388, 2018-04-10	DAE4 Sn1424, 2018-01-18

Scans Setup

Grid Extents [mm]	40.0 x 40.0
Grid Steps [lambda]	0.25 x 0.25
Sensor Surface [mm]	5.55

Measurement Results

Date	2018-08-02, 01:52
Avg. Area [cm ²]	4.00
S _{avg inc} [W/m ²]	222
S _{avg tot} [W/m ²]	226
S _{peak} [W/m ²]	443
E _{peak} [V/m]	414
H _{peak} [A/m]	1.08



Test Laboratory: Sporton International Inc.

Device Under Test Properties

Manufacturer	Dimensions [mm]	DUT Type
	100.0 x 100.0 x 100.0	Phone

Exposure Conditions

Phantom Section	Position, Test Distance [mm]	Frequency [MHz]	Conversion Factor
5G	FRONT, 5.55	60000.0	1.0

Hardware Setup

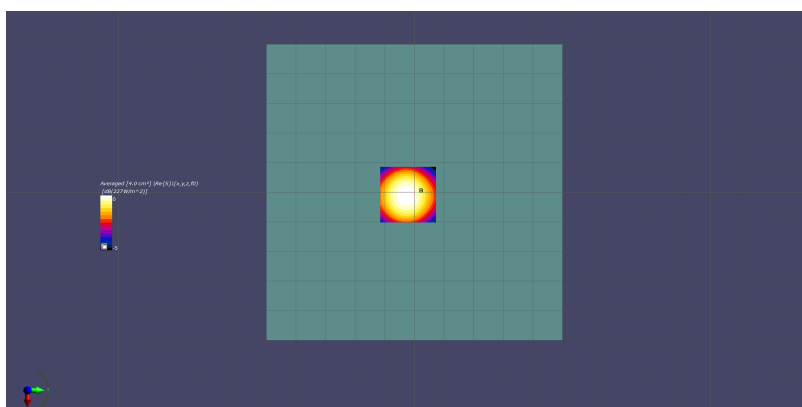
Phantom	Medium	Probe, Calibration Date	DAE, Calibration Date
5G Cover	Air -	EUmmWV2 - SN9388, 2018-04-10	DAE4 Sn853, 2018-07-24

Scans Setup

Grid Extents [mm]	40.0 x 40.0
Grid Steps [lambda]	0.25 x 0.25
Sensor Surface [mm]	5.55

Measurement Results

Date	2018-08-30, 01:21
Avg. Area [cm ²]	4.00
S _{avg inc} [W/m ²]	224
S _{avg tot} [W/m ²]	227
S _{peak} [W/m ²]	438
E _{peak} [V/m]	416
H _{peak} [A/m]	1.09



Test Laboratory: Sporton International Inc.

Device Under Test Properties

Manufacturer	Dimensions [mm]	DUT Type
	100.0 x 100.0 x 100.0	Phone

Exposure Conditions

Phantom Section	Position, Test Distance [mm]	Frequency [MHz]	Conversion Factor
5G	FRONT, 5.55	60000.0	1.0

Hardware Setup

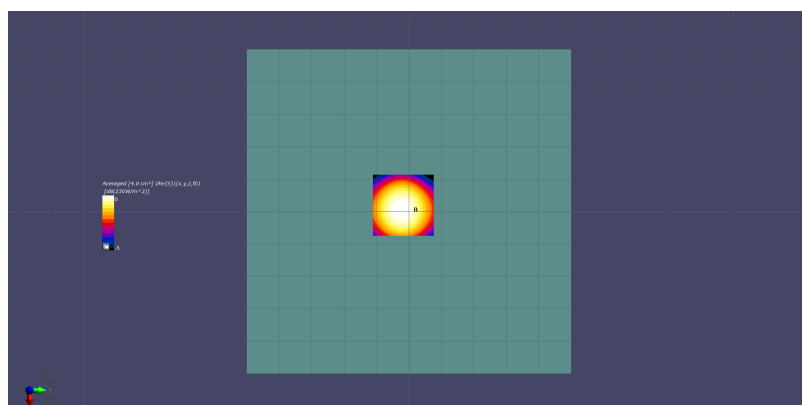
Phantom	Medium	Probe, Calibration Date	DAE, Calibration Date
5G Cover	Air -	EUmmWV2 - SN9388, 2018-04-10	DAE4 Sn917, 2017-12-14

Scans Setup

Grid Extents [mm]	40.0 x 40.0
Grid Steps [lambda]	0.25 x 0.25
Sensor Surface [mm]	5.55

Measurement Results

Date	2018-09-28, 01:25
Avg. Area [cm ²]	4.00
S _{avg inc} [W/m ²]	226
S _{avg tot} [W/m ²]	230
S _{peak} [W/m ²]	445
E _{peak} [V/m]	413
H _{peak} [A/m]	1.08



Test Laboratory: Sporton International Inc.

Device Under Test Properties

Manufacturer	Dimensions [mm]	DUT Type
	100.0 x 100.0 x 100.0	Phone

Exposure Conditions

Phantom Section	Position, Test Distance [mm]	Frequency [MHz]	Conversion Factor
5G	FRONT, 5.55	60000.0	1.0

Hardware Setup

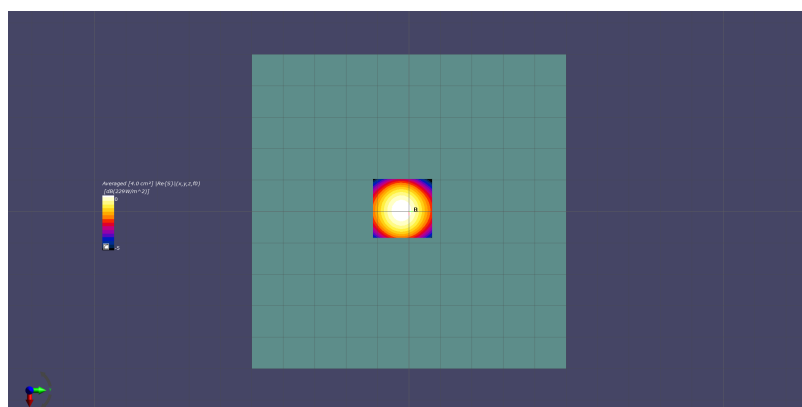
Phantom	Medium	Probe, Calibration Date	DAE, Calibration Date
5G Cover	Air -	EUmmWV2 - SN9388, 2018-04-10	DAE4 Sn917, 2017-12-14

Scans Setup

Grid Extents [mm]	40.0 x 40.0
Grid Steps [lambda]	0.25 x 0.25
Sensor Surface [mm]	5.55

Measurement Results

Date	2018-09-29, 01:39
Avg. Area [cm ²]	4.00
S _{avg inc} [W/m ²]	226
S _{avg tot} [W/m ²]	229
S _{peak} [W/m ²]	445
E _{peak} [V/m]	413
H _{peak} [A/m]	1.09



Test Laboratory: Sporton International Inc.

Device Under Test Properties

Manufacturer	Dimensions [mm]	DUT Type
	100.0 x 100.0 x 100.0	Phone

Exposure Conditions

Phantom Section	Position, Test Distance [mm]	Frequency [MHz]	Conversion Factor
5G	FRONT, 5.55	60000.0	1.0

Hardware Setup

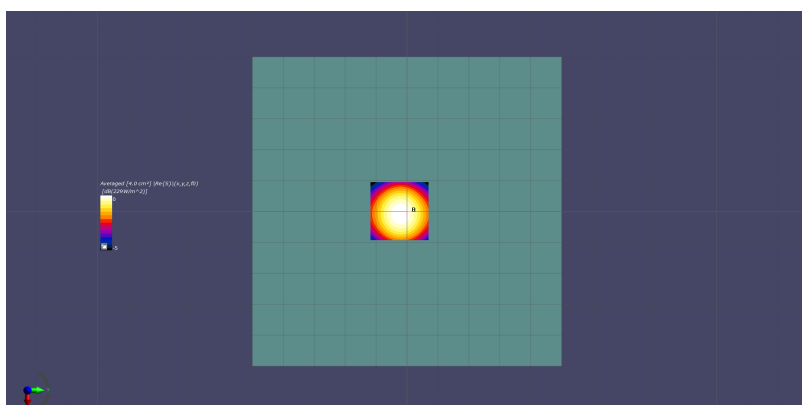
Phantom	Medium	Probe, Calibration Date	DAE, Calibration Date
5G Cover	Air -	EUmmWV2 - SN9388, 2018-04-10	DAE4 Sn917, 2017-12-14

Scans Setup

Grid Extents [mm]	40.0 x 40.0
Grid Steps [lambda]	0.25 x 0.25
Sensor Surface [mm]	5.55

Measurement Results

Date	2018-09-30, 01:05
Avg. Area [cm ²]	4.00
S _{avg inc} [W/m ²]	225
S _{avg tot} [W/m ²]	229
S _{peak} [W/m ²]	454
E _{peak} [V/m]	413
H _{peak} [A/m]	1.11



Test Laboratory: Sporton International Inc.

Device Under Test Properties

Manufacturer	Dimensions [mm]	DUT Type
	100.0 x 100.0 x 100.0	Phone

Exposure Conditions

Phantom Section	Position, Test Distance [mm]	Frequency [MHz]	Conversion Factor
5G	FRONT, 5.55	60000.0	1.0

Hardware Setup

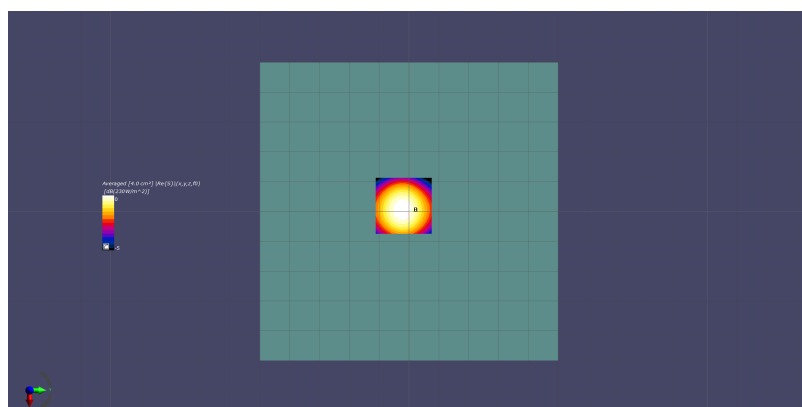
Phantom	Medium	Probe, Calibration Date	DAE, Calibration Date
5G Cover	Air -	EUmmWV2 - SN9388, 2018-04-10	DAE4 Sn917, 2017-12-14

Scans Setup

Grid Extents [mm]	40.0 x 40.0
Grid Steps [lambda]	0.25 x 0.25
Sensor Surface [mm]	5.55

Measurement Results

Date	2018-10-01, 00:31
Avg. Area [cm ²]	4.00
S _{avg inc} [W/m ²]	226
S _{avg tot} [W/m ²]	230
S _{peak} [W/m ²]	445
E _{peak} [V/m]	413
H _{peak} [A/m]	1.09



Test Laboratory: Sporton International Inc.

Device Under Test Properties

Manufacturer	Dimensions [mm]	DUT Type
	100.0 x 100.0 x 100.0	Phone

Exposure Conditions

Phantom Section	Position, Test Distance [mm]	Frequency [MHz]	Conversion Factor
5G	FRONT, 5.55	60000.0	1.0

Hardware Setup

Phantom	Medium	Probe, Calibration Date	DAE, Calibration Date
5G Cover	Air -	EUmmWV2 - SN9388, 2018-04-10	DAE4 Sn910, 2018-06-21

Scans Setup

Grid Extents [mm]	40.0 x 40.0
Grid Steps [lambda]	0.25 x 0.25
Sensor Surface [mm]	5.55

Measurement Results

Date	2018-10-04, 00:58
Avg. Area [cm ²]	4.00
S _{avg inc} [W/m ²]	218
S _{avg tot} [W/m ²]	221
S _{peak} [W/m ²]	442
E _{peak} [V/m]	413
H _{peak} [A/m]	1.07

