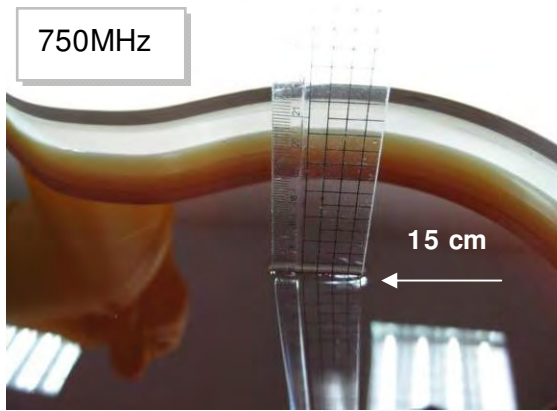


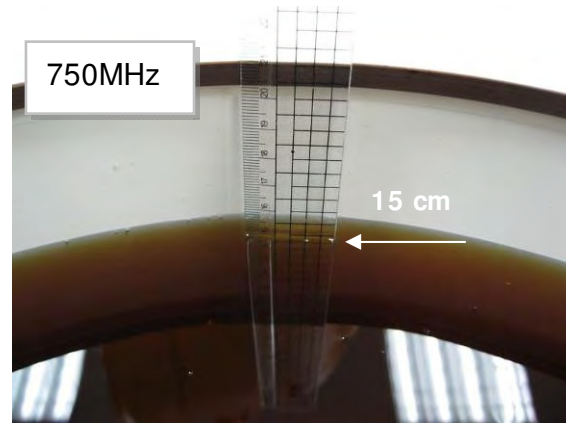
**APPENDIX**  
**11. Photographs of Test Setup**

**Fig.1 Photograph of the SAR measurement system**

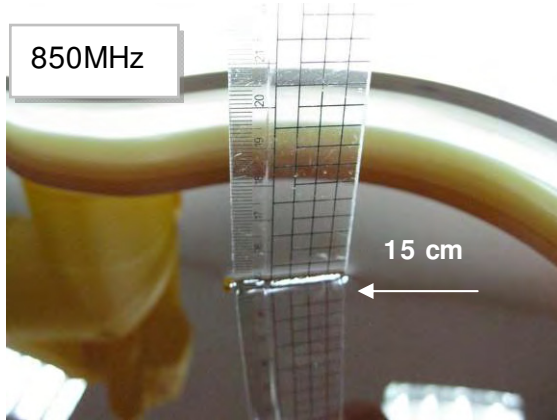
### Photograph of the Tissue Simulant Fluid Liquid (Head & Body)



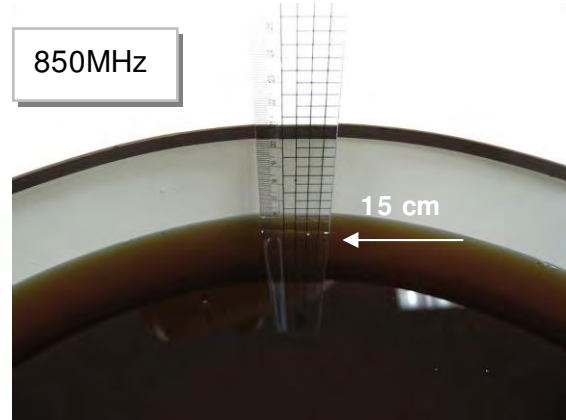
**Fig.2.1**



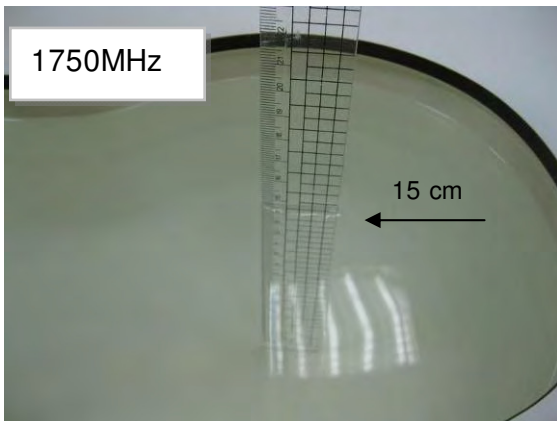
**Fig.2.2**



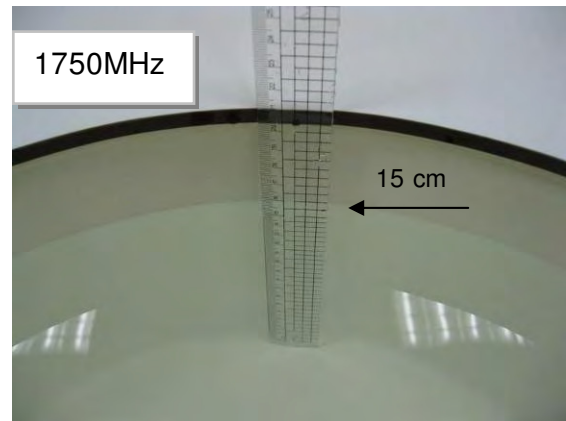
**Fig.2.3**



**Fig.2.4**

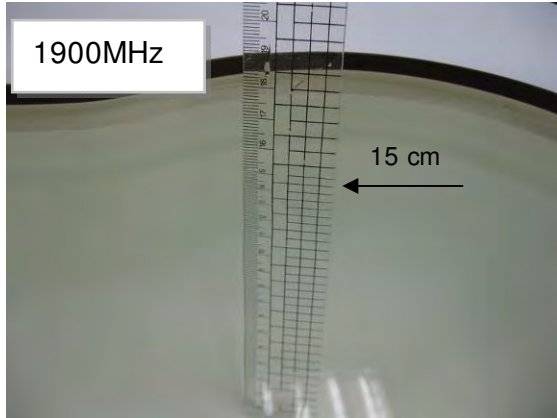


**Fig.2.5**

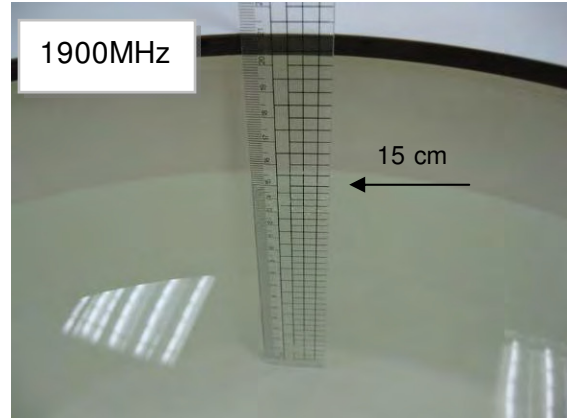


**Fig.2.6**

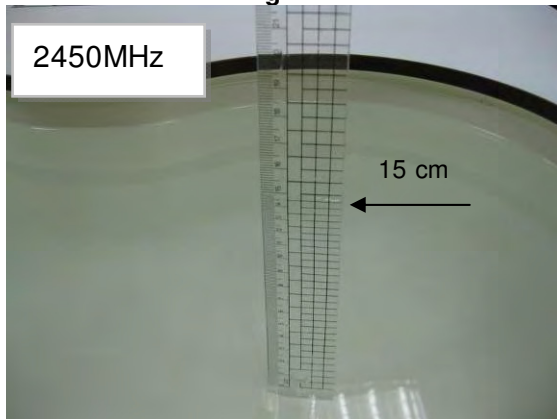
### Photograph of the Tissue Simulant Fluid Liquid (Head & Body)



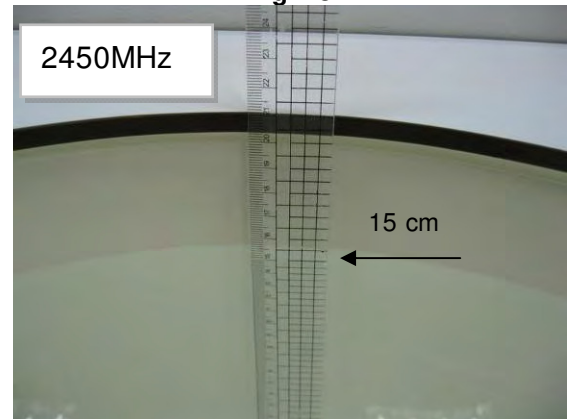
**Fig.2.7**



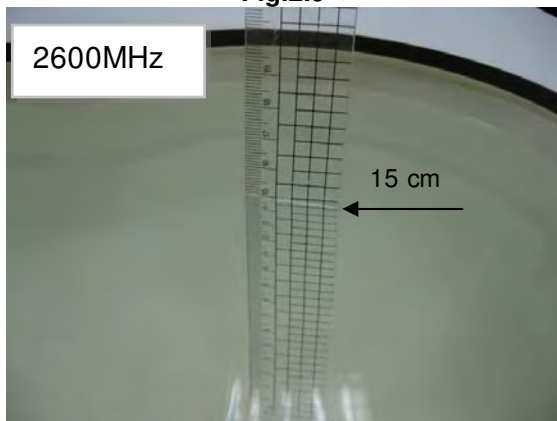
**Fig.2.8**



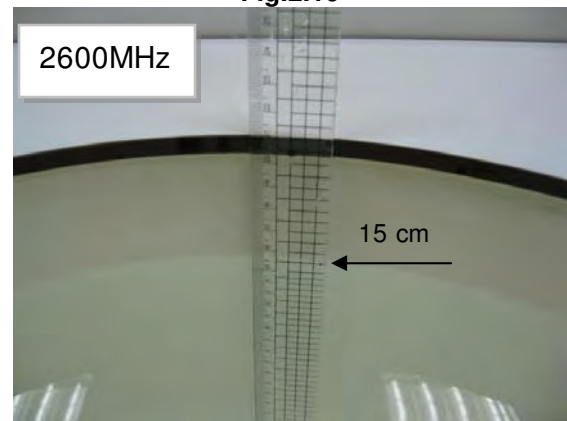
**Fig.2.9**



**Fig.2.10**

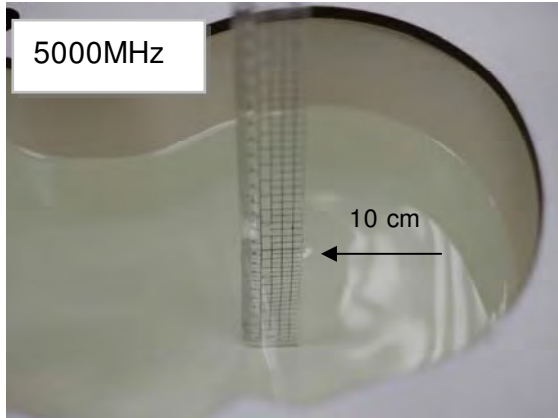


**Fig.2.11**

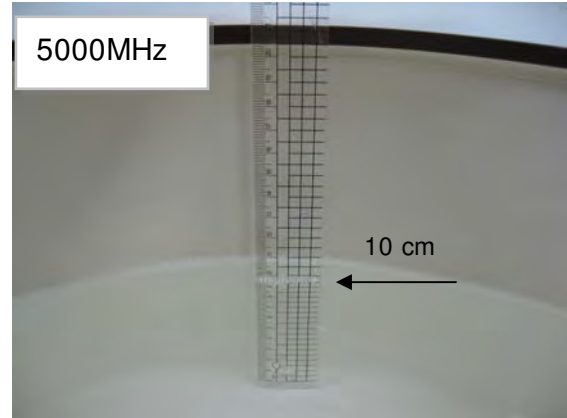


**Fig.2.12**

**Photograph of the Tissue Simulant Fluid Liquid (Head & Body)**



**Fig.2.15**



**Fig.2.16**

## Head Mode

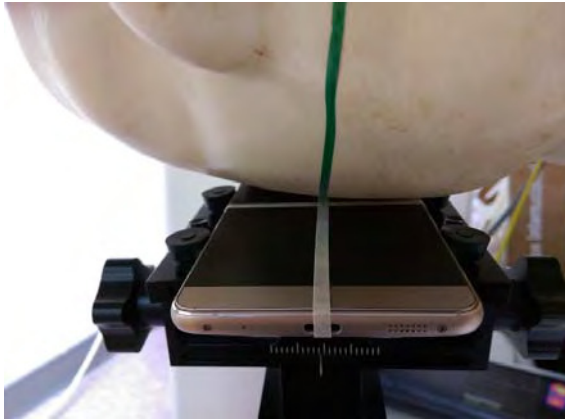


Fig.3 Right Head Section / Cheek-Touch Position

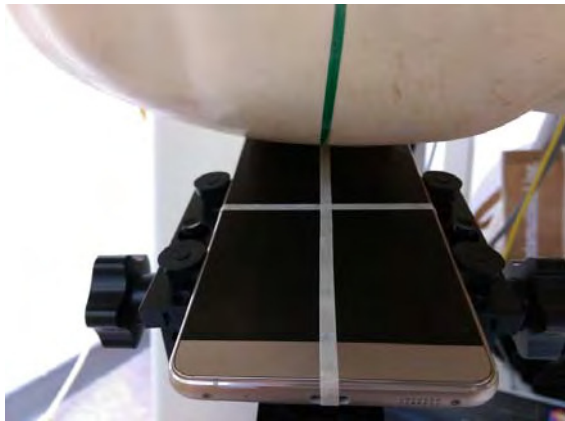
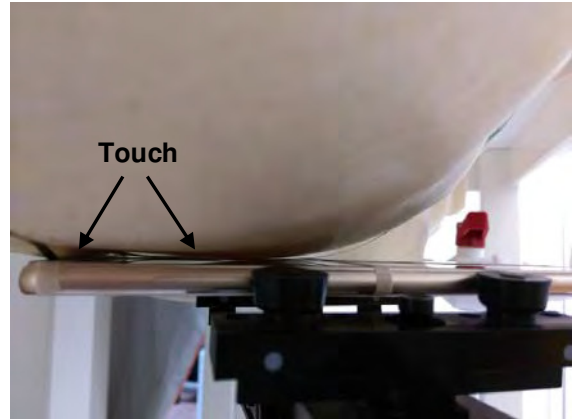


Fig.4 Right Head Section / Ear-Tilt Position(15°)

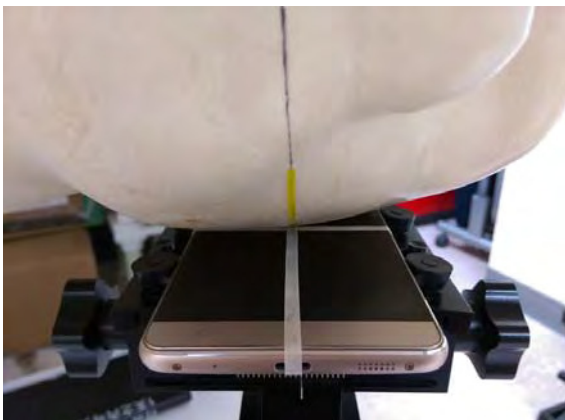
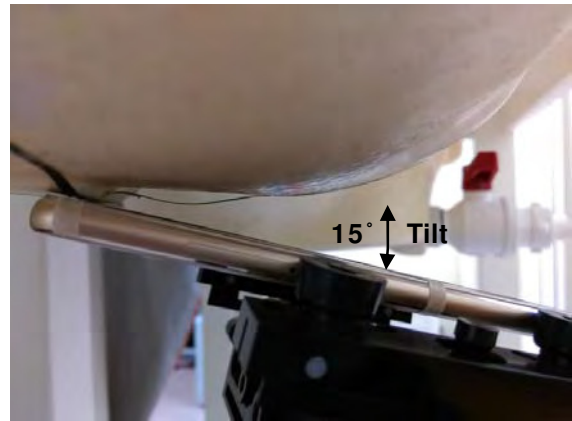
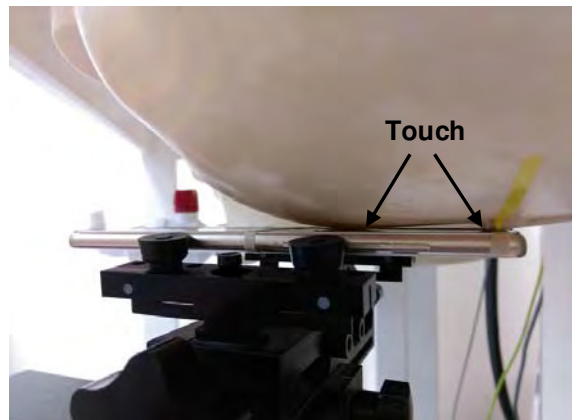


Fig.5 Left Head Section / Cheek-Touch Position



## Head Mode

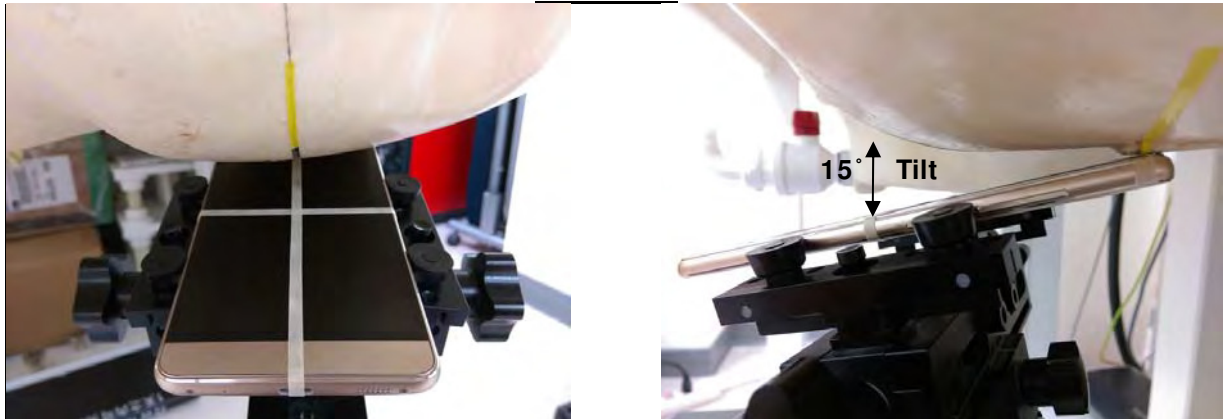
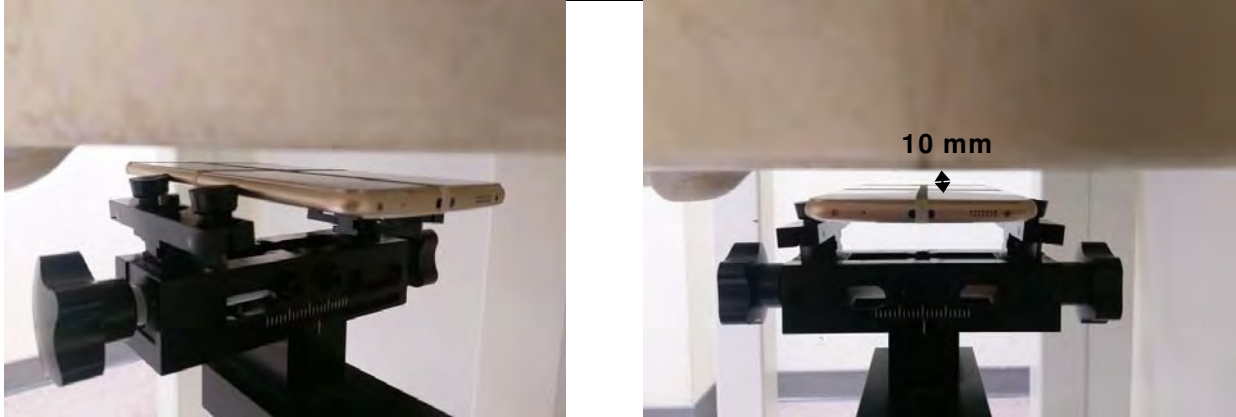
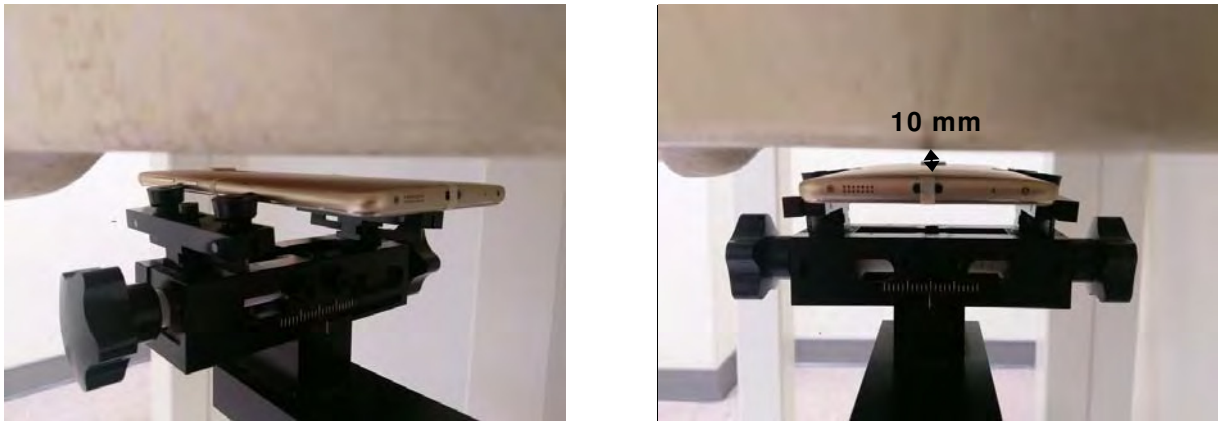


Fig.6 Left Head Section / Ear-Tilt Position(15°)

**Body worn- distance between flat phantom and mobile phone is 10 mm**



**Fig.7 EUT Front side to flat phantom**

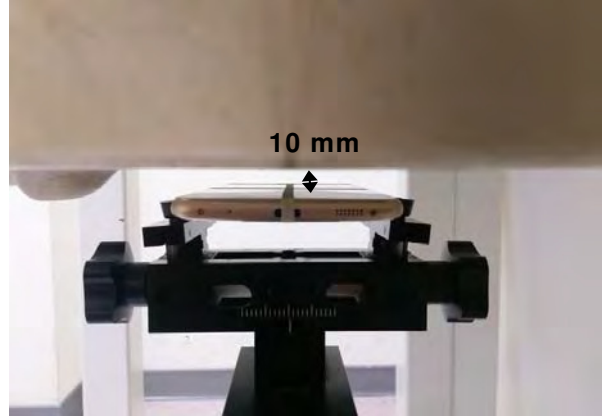


**Fig.8 EUT Back side to flat phantom**

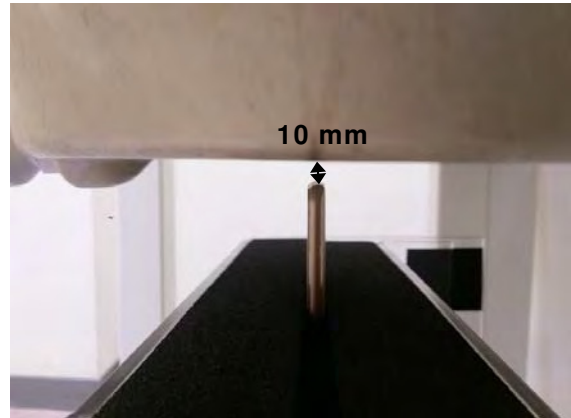
**Hotspot mode - distance between flat phantom and mobile phone is 10 mm**



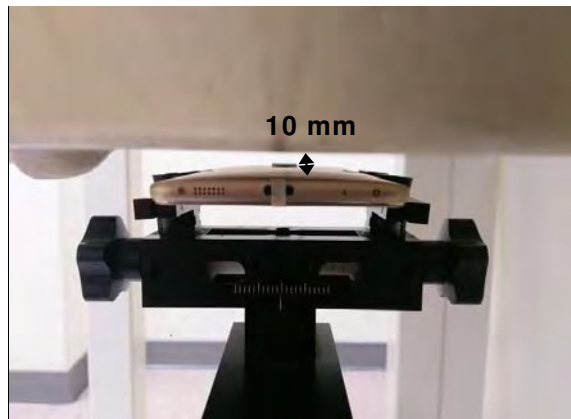
**Fig.9 EUT Front side to flat phantom**



**Fig.10 EUT Bottom side to flat phantom**



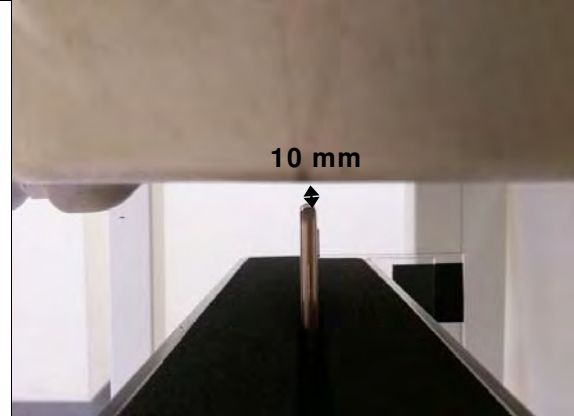
**Fig.11 EUT Back side to flat phantom**



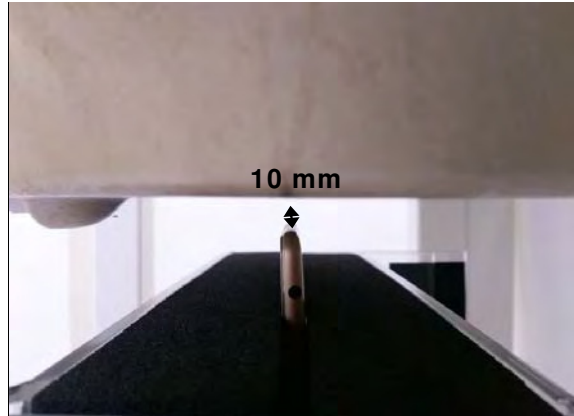
**Hotspot mode- distance between flat phantom and mobile phone is 10 mm**



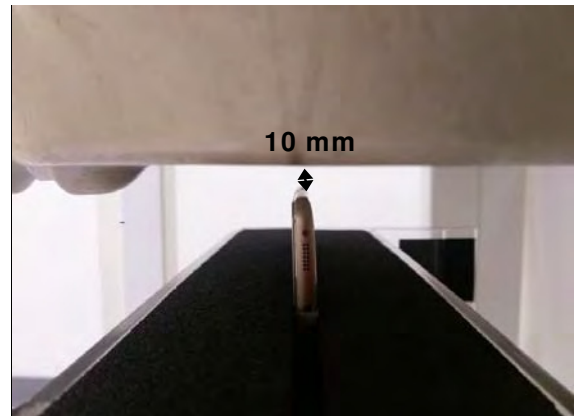
**Fig.12 EUT Top side to flat phantom**



**Fig.13 EUT Left side to flat phantom**



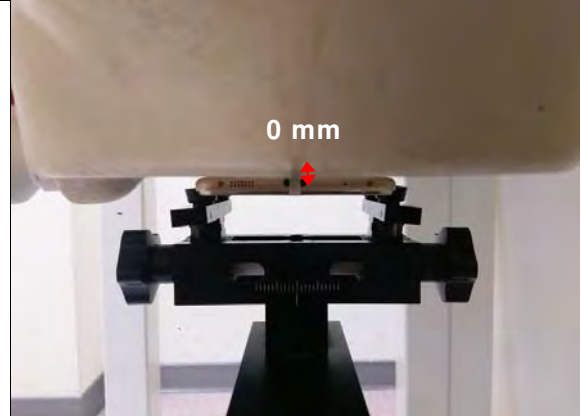
**Fig.14 EUT Right side to flat phantom**



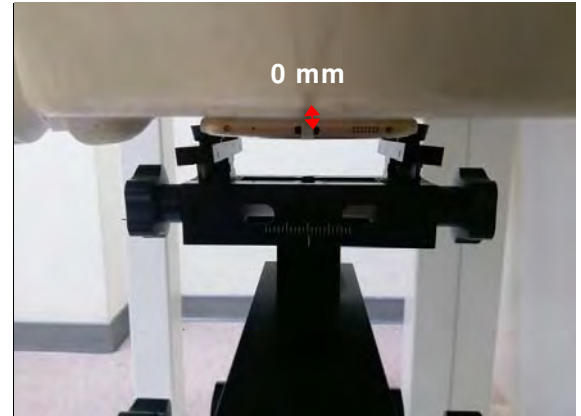
**Product specific 10-g SAR - distance between flat phantom and mobile phone is 0 mm**



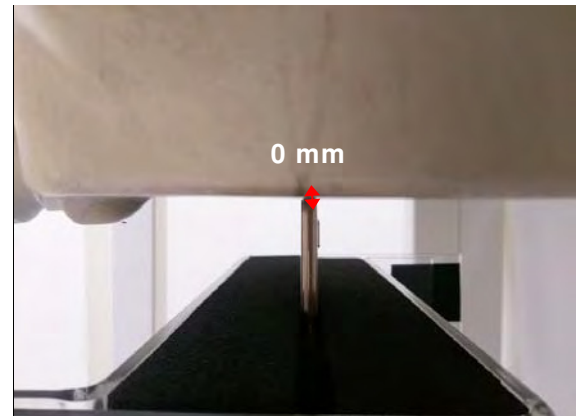
**Fig.15 EUT Back side to flat phantom**



**Fig.16 EUT Front side to flat phantom**



**Fig.17 EUT Top side to flat phantom**



**Product specific 10-g SAR - distance between flat phantom and mobile phone is 0 mm**



**Fig.18 EUT Right side to flat phantom**

## 11. Photographs of the EUT



**Fig.19 Front view of EUT**



**Fig.20 Back view of EUT**

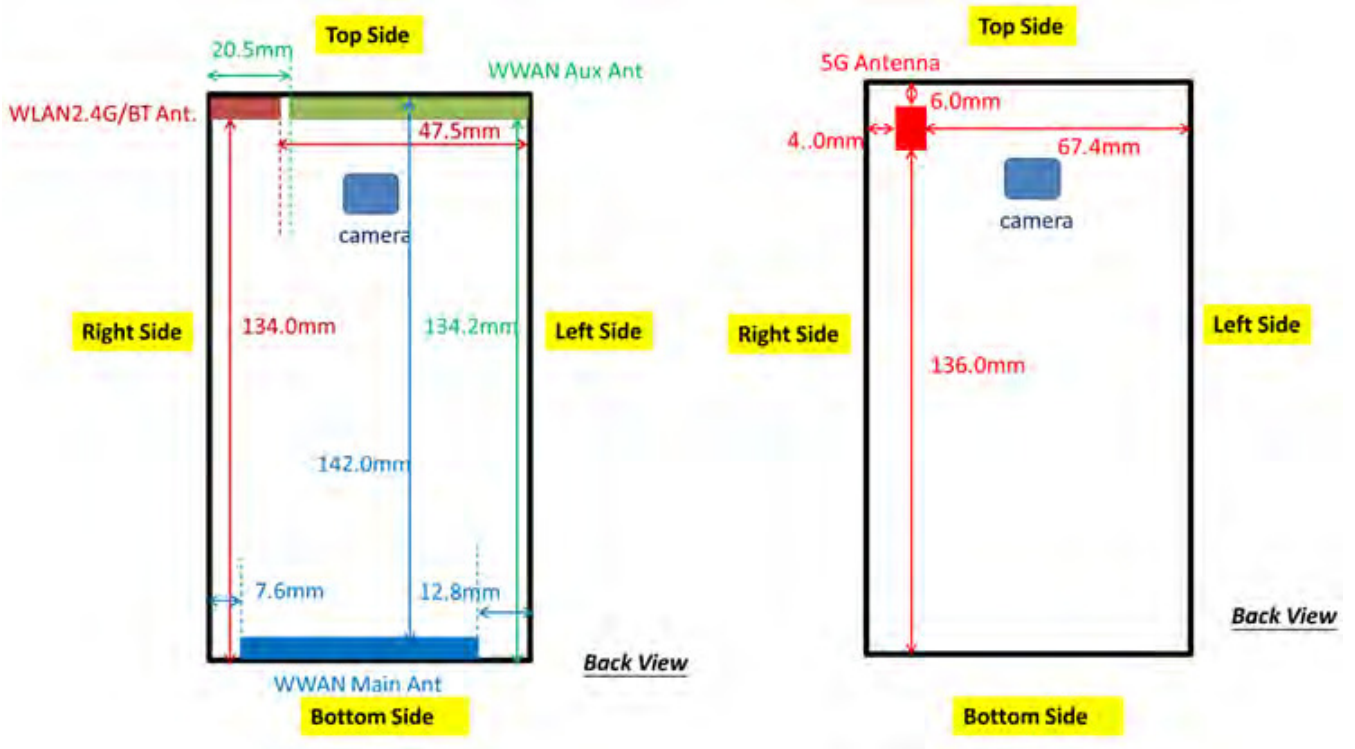


Fig.21 Antenna position of EUT

- End of Report -