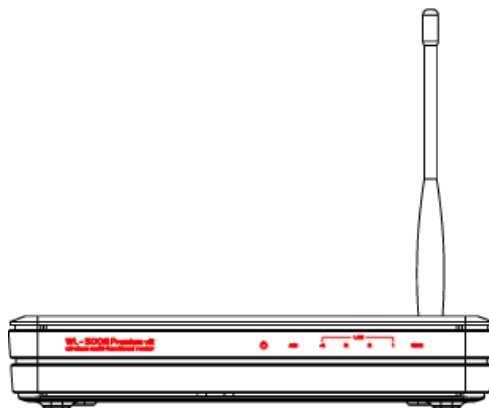




WL-500gP V2 Wireless Router



User Manual

E3209/ April 2007



Manufacturer Contact Information

ASUSTeK COMPUTER INC. (Asia-Pacific)

Company address: 15 Li-Te Road, Beitou, Taipei 11259
General (tel): +886-2-2894-3447 Web site address: www.asus.com.tw
General (fax): +886-2-2894-7798 General email: info@asus.com.tw

ASUS COMPUTER INTERNATIONAL (America)

Company address: 44370 Nobel Drive, Fremont, CA 94538, USA
General (fax): +1-510-608-4555 Web site address: usa.asus.com

Technical support

General support: +1-502-995-0883 Support (fax): +1-502-933-8713
Online support: <http://vip.asus.com/eservice/techserv.aspx>

ASUS COMPUTER GmbH (Germany & Austria)

Company address: Harkort Str. 25, D-40880 Ratingen, Germany
General (tel): +49-2102-95990 Web site address: www.asuscom.de
General (fax): +49-2102-959911 Online contact: www.asuscom.de/sales

Technical support

Components: +49-2102-95990 Online support: www.asuscom.de/support
Notebook: +49-2102-959910 Support (fax): +49-2102-959911



Table of contents

1. Package contents	3
2. Connecting ADSL modem and wireless router	3
1) Cable connection	3
2) Status indicators	4
3) Wall mount option	4
3. Getting started	5
1) Wired connection	5
2) Wireless Connection	5
3) Setting IP address for wired or wireless client	5
4) Configuring the wireless router	6
5) Quick setup	7
4. Wireless router features	12
1) Choosing an appropriate operation mode	12
2) Setting up wireless encryption	13
3) Setting up virtual server in your LAN	14
4) Setting up virtual DMZ in your LAN	15
5) Setting up DDNS	15
6) Setting up Bandwidth Management	21
5. Application features	23
1) Sharing USB storage	23
2) Setting up FTP site	25
3) Web camera	26
4) Sharing USB printer	28
5) Playing stream media on Xbox360	31
6. Setting up using ASUS utility	34
1) Utility Installation for WL-500gP V2	34
2) EZSetup	35



7. Troubleshooting37
8. Appendix39



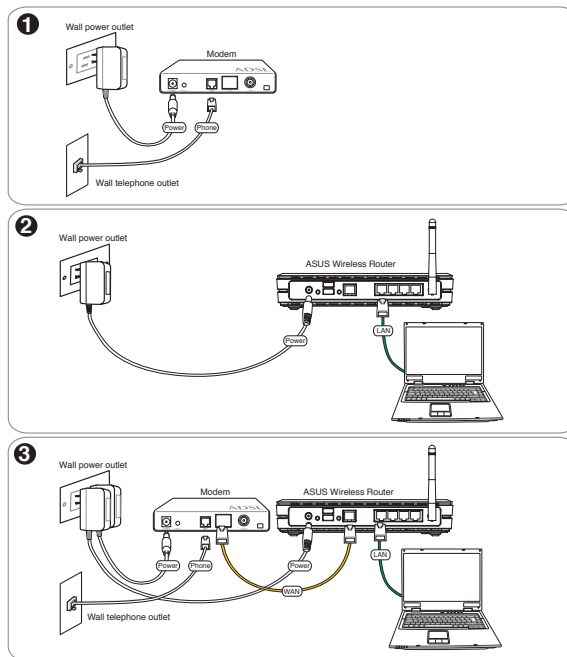


1. Package contents

- WL-500gP V2 wireless router x 1
- Power adapter x 1
- Utility CD x 1
- RJ45 cable x 1
- Quick Start Guide x 1

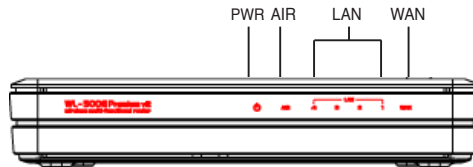
2. Connecting ADSL modem and wireless router

1) Cable connection





2) Status indicators



PWR (Power)

Off	No power
On	System ready
Flashing-slow	Firmware upgrade failed
Flashing-quick	EZsetup processing

AIR (Wireless Network)

Off	No power
On	Wireless system ready
Flashing	Transmitting or receiving data (wireless)

WAN (Wide Area Network)

Off	No power or no physical connection
On	Has physical connection to an Ethernet network
Flashing	Transmitting or receiving data (through Ethernet cable)

LAN 1-4 (Local Area Network)

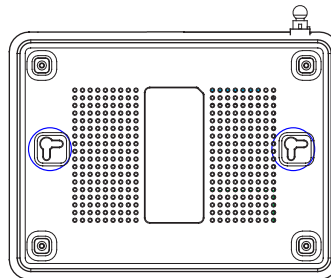
Off	No power or no physical connection
On	Has physical connection to an Ethernet network
Flashing	Transmitting or receiving data (through Ethernet cable)

3) Wall mount option

Out of the box, ASUS WL-500gP V2 Wireless Router is designed to sit on a raised flat surface like a file cabinet or book shelf. The unit may also be converted for mounting to a wall or ceiling.

Follow these steps to mount the ASUS Wireless Router to a wall:

1. Look on the underside for the two mounting hooks.
2. Mark two upper holes in a flat surface.
3. Tighten two screws until only 1/4" is showing.
4. Latch the hooks of the ASUS Wireless Router onto the screws.



Note: Re-adjust the screws if you cannot latch the ASUS Wireless Router onto the screws or if it is too loose.





3. Getting started

The ASUS WL-500gP V2 Wireless Router can meet various working scenarios with proper configuration. The default settings of the wireless router may need change so as to meet your individual needs. Therefore, before using the ASUS Wireless Router, check the basic settings to make sure they all work in your environment.

ASUS provides a utility named EZSetup for fast wireless configuration. If you would like to use EZSetup for your wireless network configuration, refer to chapter 6 for details.

Note: Wired connection for initial configuration is recommended to avoid possible setup problems due to wireless uncertainty.

1) Wired connection

The ASUS WL-500gP V2 Wireless Router is supplied with an Ethernet cable in the package. Since the ASUS Wireless Router has integrated auto-crossover function, therefore, you can use either straight-through or crossover cable for wired connection. Plug one end of the cable to the LAN port on the rear panel of the router and the other end to the Ethernet port on your PC.

2) Wireless Connection

For establishing wireless connection, you need an IEEE 802.11b/g compatible WLAN card. Refer to your wireless adapter user manual for wireless connection procedures. By default, the SSID of ASUS Wireless Router is "default" (in lower case), encryption is disabled and open system authentication is used.

3) Setting IP address for wired or wireless client

To access WL-500gP V2 Wireless Router, you must have correct TCP/IP settings on your wired or wireless clients. Set the IP addresses of the clients within the same subnet of WL-500gP V2.

Getting IP address Automatically

The ASUS Wireless Router integrates DHCP server functions, therefore, you can make your PC get IP address automatically from the ASUS Wireless Router.

Note: Before rebooting your PC, switch ON the wireless router and make sure the router is in ready state.

Setting up IP address Manually

To set IP address manually, you need to know the default settings of the ASUS Wireless Router:

- IP address 192.168.1.1
- Subnet Mask 255.255.255.0



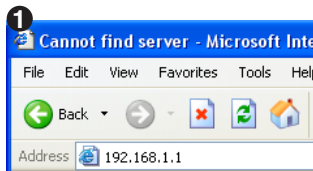
To set up the connection with a manually assigned IP address, the address of your PC and the wireless router must be within the same subnet:

- IP address: 192.168.1.xxx (xxx can be any number between 2 and 254. Make sure the IP address is not used by other device)
- Subnet Mask: 255.255.255.0 (same as WL-500gP V2)
- Gateway: 192.168.1.1 (IP address of WL-500gP V2)
- DNS: 192.168.1.1 (WL-500gP V2), or assign a known DNS server in your network.



4) Configuring the wireless router

Follow the steps below to enter the Web configuration interface of WL-500gP V2.



Enter the following address in your web browser: <http://192.168.1.1>



Defaults

User name: **admin** Password: **admin**

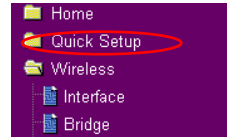


After logging in, you can see the ASUS Wireless Router home page. The homepage displays quick links to configure the main features of the wireless router.



5) Quick setup

To start quick setup, click **Next** to enter the "Quick Setup" page. Follow the instructions to setup the ASUS Wireless Router.



1. Select your time zone and click **Next**.

2. ASUS wireless router supports five types of ISP services: cable, PPPoE, PPTP, static WAN IP, and Telstra BigPond. Select your connection type and click **Next** to continue.

Cable or dynamic IP user

If you are using services provided by cable ISP, select **Cable Modem or other connection that gets IP automatically**. If your ISP provides you hostname, MAC address, and heartbeat server address, fill these information into the boxes on the setting page; if not, click **Next** to skip this step.

PPPoE user

If you use PPPoE service, select **ADSL connection that requires username and password**. It is known as PPPoE. You need to input the username and password provided by your ISP. Click **Next** to continue.

PPTP user

If you are using PPTP services, select **ADSL connection that requires username, password and IP address**. Fill in the username, password and IP address provided by your ISP into the fields. Click **Next** to continue.

Set Your Account to ISP

If you apply an account with dynamic IP. You must get user account and password from your ISP. Please fill the data into the following fields carefully. Or, if you apply an ADSL account with static IP, just ignore user name and password information.

User Name: henk008@adsl-comfort

Password: *****

Prev Next

WAN IP Setting

Fill TCP/IP setting for WL-500gP V2 to connect to Internet through WAN port.

Get IP automatically? Yes No

IP Address: 219.31.111.32

Subnet Mask: 255.255.255.0

Default Gateway: 219.31.111.1

Get DNS Server automatically? Yes No

DNS Server 1: 168.95.1.1

DNS Server 2:

Prev Next

Static IP user

If you are using ADSL or other connection type that uses static IP address, select **ADSL or other connection type that uses static IP address**. Input the IP address, subnet mask, and default gateway provided by your ISP. You can specify DNS servers, or get DNS information automatically.

WAN IP Setting

Fill TCP/IP setting for WL-500gP V2 to connect to Internet through WAN port.

Get IP automatically? Yes No

IP Address: 219.31.111.32

Subnet Mask: 255.255.255.0

Default Gateway: 219.31.111.1

Get DNS Server automatically? Yes No

DNS Server 1: 168.95.1.1

DNS Server 2:

Prev Next

- After the connection type setting is complete, you are to set up your wireless interface. Specify to your wireless router an SSID (Service Set Identifier), which is a unique identifier attached to packets sent over WLAN. This identifier emulates a password when a device attempts to communicate with your wireless router via WLAN.

Configure Wireless Interface

First step to set your wireless interface is to give it a name, called SSID. In addition, if you would like to protect transmitted data, please select the Security Level and assign a password for authentication and data transmission if it is required.

SSID: WL-500gP V2

Security Level: Low(None) | Medium(WEP-64bits) | Medium(WEP-128bits) | High(WPA-PSK/WPA2-PSK)

Passphrase: [Input field]

WEP Key 1 (10 or 26 hex digits): [Input field]

WEP Key 2 (10 or 26 hex digits): [Input field]

WEP Key 3 (10 or 26 hex digits): [Input field]

WEP Key 4 (10 or 26 hex digits): [Input field]

Key Index: [Dropdown menu]

Prev Finish

If you want to protect transmitted data, select a **Security Level** to enable encryption methods.

Medium: Only users with the same WEP key settings can connect to your wireless router and transmit data using 64bits or 128bits WEP key encryption.

High: Only users with the same WPA pre-shared key settings can connect to your wireless router and transmit data using TKIP encryption.



- Input four sets of WEP keys in the WEP Key fields (10 hexadecimal digits for WEP 64bits, 26 hexadecimal digits for WEP 128bits). You can also let the system generate the keys by inputting a Passphrase. Record the Passphrase and the WEP keys in your notebook, then click **Finish**.

For example, if we select WEP 64bits encryption mode and input 11111 as the Passphrase, the WEP Keys are generated automatically.

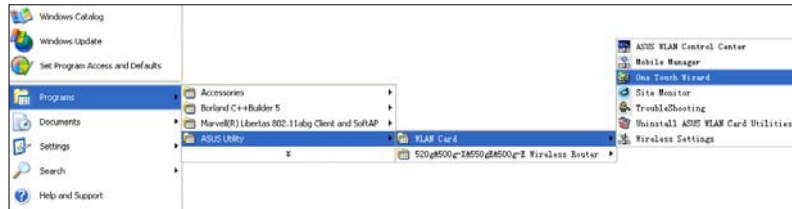
- Click **Save&Restart** to restart the wireless router and activate the new settings.

- Connect to the wireless router via wireless.

To connect the wireless router from a wireless client, you can use Windows® Wireless Zero Configuration service to set up the connection. If you use ASUS Wireless Card on your computer, you can use the One Touch Wizard utility supplied in WLAN Card support CD for wireless connection.

Configuring ASUS WLAN Card with One Touch Wizard

If you have installed ASUS wireless card together with its utilities and drives on your PC, click **Start -> Programes -> ASUS Utility-> WLAN Card -> One Touch Wizard** to launch the One Touch Wizard utility.



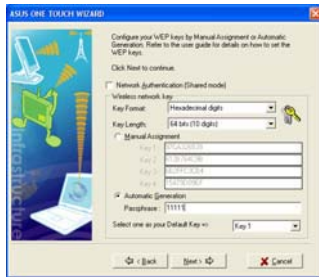
1) Select **Connect to an existing wireless LAN (Station)** radio button and click **Next** to continue.



2) One Touch Wizard searches and displays the available APs in the **Available Networks** list. Select WL-500gP V2 and press **Next** to continue.



3) Set the authentication and encryption of your WLAN card the same with those at WL-500gP V2. In the previous steps the **Key Length** is **64 bits**, **Passphrase** is **11111** Click **Next** to continue.



4) It takes several seconds for the wireless card to associate with WL-500gP V2. Press **Next** to setup TCP/IP for your WLAN Card.



5) Setup the IP address of the WLAN Card according to your network condition. After the setup is complete, click **Finish** to exit the One Touch Wizard.

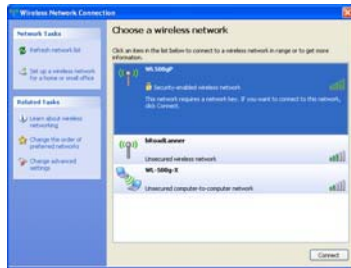




Configuring WLAN card with Windows® WZC service

If you use non-ASUS wireless card, you can set up the wireless connection with Windows® Wireless Zero Configuration (WZC) service.

- 1) Double-click the wireless network icon on the task bar to view available networks. Select your wireless router and click **Connect**.
- 2) Input the 10-digit keys you have set on the wireless router and click **Connect**. The connection is complete within several seconds.



7. Configuring advanced features

To view and adjust other settings of the wireless router, enter the Web configuration page of WL-500gP V2. Click on items on the menu to open a submenu and follow the instructions to setup the router. Tips show up when you move your cursor over each item.

