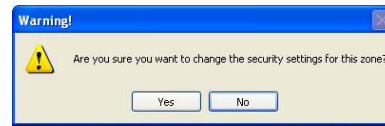
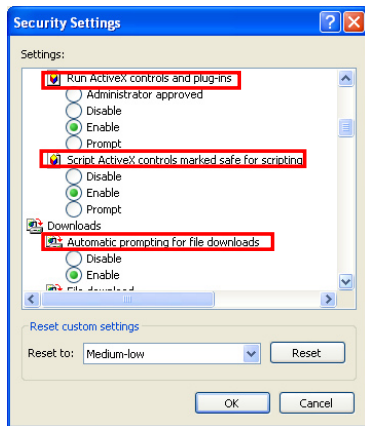




- By default, these three items are enabled. Enable them if changed.
- Click **Yes** to change the security settings.



Enable Web Camera to WAN users

With proper setting to DDNS, you can monitor your working environment from anywhere on Internet, even if dynamic WAN IP address is used. If any motion is detected by the camera, WL-500gP captures the images and send them to your appointed E-mail box. Refer to page 15-17 for DDNS setup procedures.

- Enable Security Mode?** -Select Yes to enable security function on the data and time you set below.

Date to Enable Security Mode - This field defines the date that Security Mode is enabled.

Time to Enable Security Mode - This field defines the time interval that Security Mode is enabled.

Security Mode Setting	
This function allows you to monitor your environment through Web Camera. If there is any motion detected, ASUS Wireless Router will try to alert you by means of e-mail.	
Enable Security Mode?	<input checked="" type="radio"/> Yes <input type="radio"/> No
Date to Enable Security Mode:	<input checked="" type="checkbox"/> Sun <input checked="" type="checkbox"/> Mon <input checked="" type="checkbox"/> Tue <input checked="" type="checkbox"/> Wed <input checked="" type="checkbox"/> Thu <input checked="" type="checkbox"/> Fri <input checked="" type="checkbox"/> Sat
Time to Enable Security Mode:	00 : 00 : 23 : 59
Send to:	<input type="text"/>
Email Server:	<input type="text"/>
Subject:	Motion detection alert!!!
Attach Image File?	<input checked="" type="radio"/> Yes <input type="radio"/> No

Send to - Input the E-mail address you wish WL-500gP send the image to.

Email Server - This field indicates the E-mail server you use for exchanging E-mail. If you leave this field blank, WL-500gP uses the mail server of your E-mail address in **Send to** field.

Subject - This field is for the subject of E-mail.

Attach Image File? - This field allows you to attach the captured image in the E-mail.

Remote monitors

This function allows you to monitor up to 6 Web Cameras in your LAN. You can enter the IP addresses of other ASUS Wireless Routers which have Web Camera attached.



Note: When enabling "LAN and WAN" remote control in the Wireless Router, packets from Internet with destination ports 8081 to 8086 will be forwarded to WL-500gP in Remote Control fields. To makes sure packets from WL-500gP are routed back to Internet, you need to set a static route entry for WL-500gP. The IP address and gateway address are same as the address of WL-500gP.



Remote Site 1-6 - This field stands for the IP address and port number of Remote Site. The value of this field is [IP Address]:[Connection Port].

Preview - Click Preview to see the view of all the Web Camera sites you set in Remote Site.

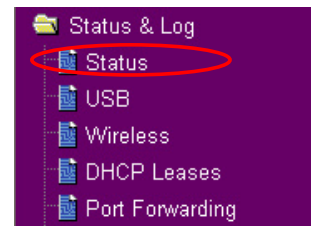
Remote Monitor Setting	
This function allows you to monitor up to 6 Web Cameras in your LAN. Please enter the IP addresses of the wireless routers which connect with Web Camera. If you want to expose these web camera to Internet, please set up virtual server for each HTTP port and ActiveX port manually.	
Remote Control Mode:	LAN Only Preview
Remote Site 1:	192.168.123.1:7788
Remote Site 2:	192.168.123.1:7777
Remote Site 3:	192.168.1.1:7777
Remote Site 4:	
Remote Site 5:	
Remote Site 6:	
Restore Finish Apply	

4) Sharing USB printer

You can connect a comptible USB printer to the USB2.0 port of WL-500gP to share the printer with your LAN users. Follow the procedures below to setup your computers to utilize the printer server function of WL-500gP.

Installing USB printer

Plug your USB printer to the USB2.0 port on WL-500gP rear panel. To verify whether your printer is properly installed and to WL-500gP Wireless router, click **Status & Log -> Status**. If **Printer Model** is correct and **Printer Status** is **On-Line**, you can share this printer within your LAN.



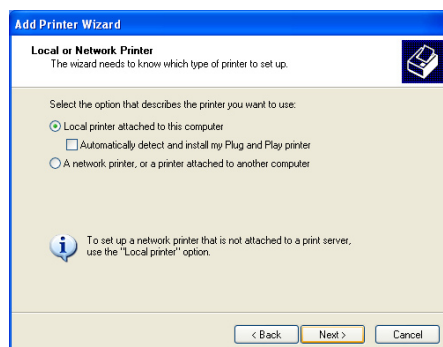
Note: Visit ASUS Website for comptible printer vendor and models.

Printer	
Printer Model:	EPSON Stylus Photo R210
Printer Status:	On-Line
User:	
Action:	Remove

Setting up printer client under Windows XP

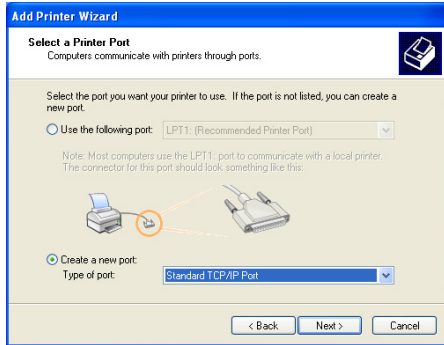
Follow the steps below to install network printer on your clients.

1. Run Add Printer Wizard from **Start -> Printers and Faxes -> Add a printer.**
2. Select **Local printer attached to this computer** and click **Next.**





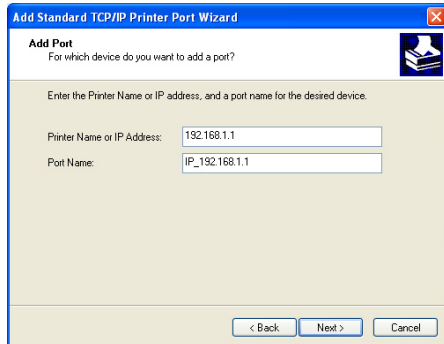
3. Select **Create a new port** and set Type of port to **Standard TCP/IP Port**, then click **Next**.



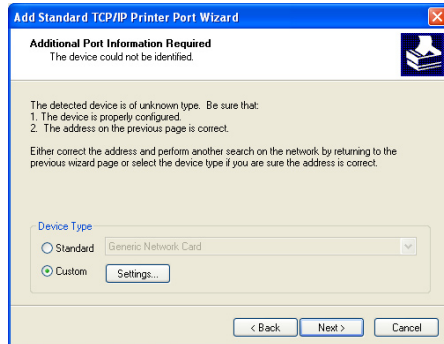
4. Click **Next** to setup TCP/IP port for accessing the network printer.



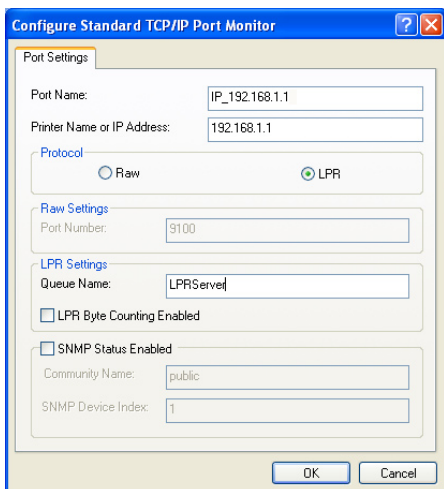
5. Input the IP address of WL-500gP in the **Printer Name or IP Address** field and click **Next**.



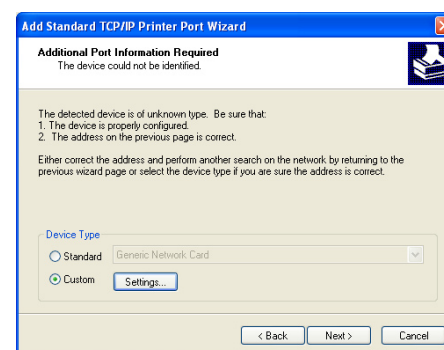
6. Select **Custom** and click **Settings...**



7. Set **Protocol** to **LPR** and type **LPRServer** in **Queue Name** field. Click **Next** to continue.

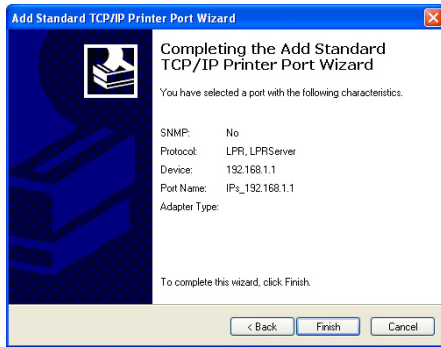


8. Press **Next** to finish standard TCP/IP port setting.

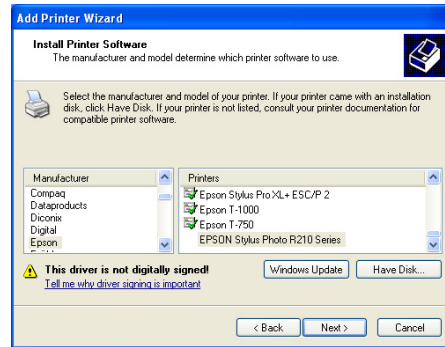




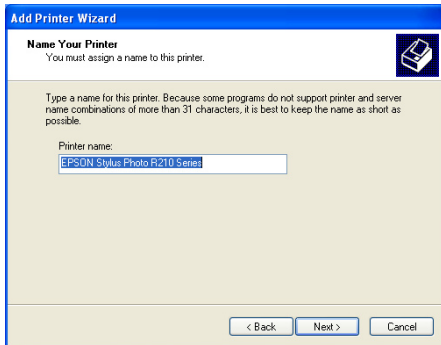
- Press **Finish** to complete the settings and return to Add Printer Wizard.



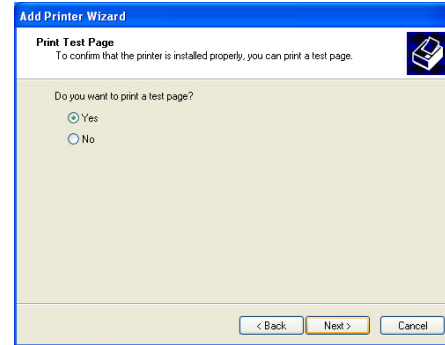
- Install printer driver from the vendor-model list. If your printer is not in the list, click **Have Disk** to manually assign the location of driver.



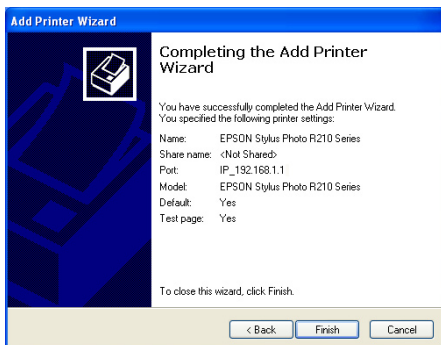
- Click **Next** to accept the default name for the printer.



- Select **Yes** to print a test page. Click **Next** to print.



- The installation is complete. Click **Finish** to quit the Add Printer Wizard.



Note: If you have already installed the printer locally on your computer, right click the printer icon and select **Property -> Port** tab to add a standard TCP/IP port. Click **Add Port** then select **Standard TCP/IP Port** and click **New Port** button. Refer to step 5-8 for setting procedures.



Note: If you use Windows® 98 or ME which does not support Standard TCP/IP port, you need to use Remote Port which is supported by WL-500gP.