

Appendix C

SAR System Validation Data

of

Product Name

Wireless Local Area Network Adapter

Model

WL-160W

1 MHz System Validation Data

Report Date : 08-Dec-2006
Measurement Date : 08-Dec-2006

Product Data

Device Name : Dipole-2450
Serial No. : Validation
Type : Dipole
Model : Standard
Frequency : 2450.00 MHz
Max. Transmit Pwr : 1 W
Drift Time : 0 min(s)
Length : 51.5 mm
Width : 3.6 mm
Depth : 30.4 mm
Antenna Type : Internal
Power Drift-Start : 65.463 W/kg
Power Drift-Finish: 65.947 W/kg
Power Drift (%) : 0.740

Phantom Data

Name : APREL-Uni
Type : Uni-Phantom
Size (mm) : 280 x 280 x 200
Location : Center

Tissue Data

Type : HEAD
Serial No. : 2450HEAD
Frequency : 2450.00 MHz
Last Calib. Date : 08-Dec-2006
Temperature : 23.20 °C
Ambient Temp. : 23.50 °C
Humidity : 50.00 RH%
Epsilon : 40.27 F/m
Sigma : 1.78 S/m
Density : 1000.00 kg/cu. m

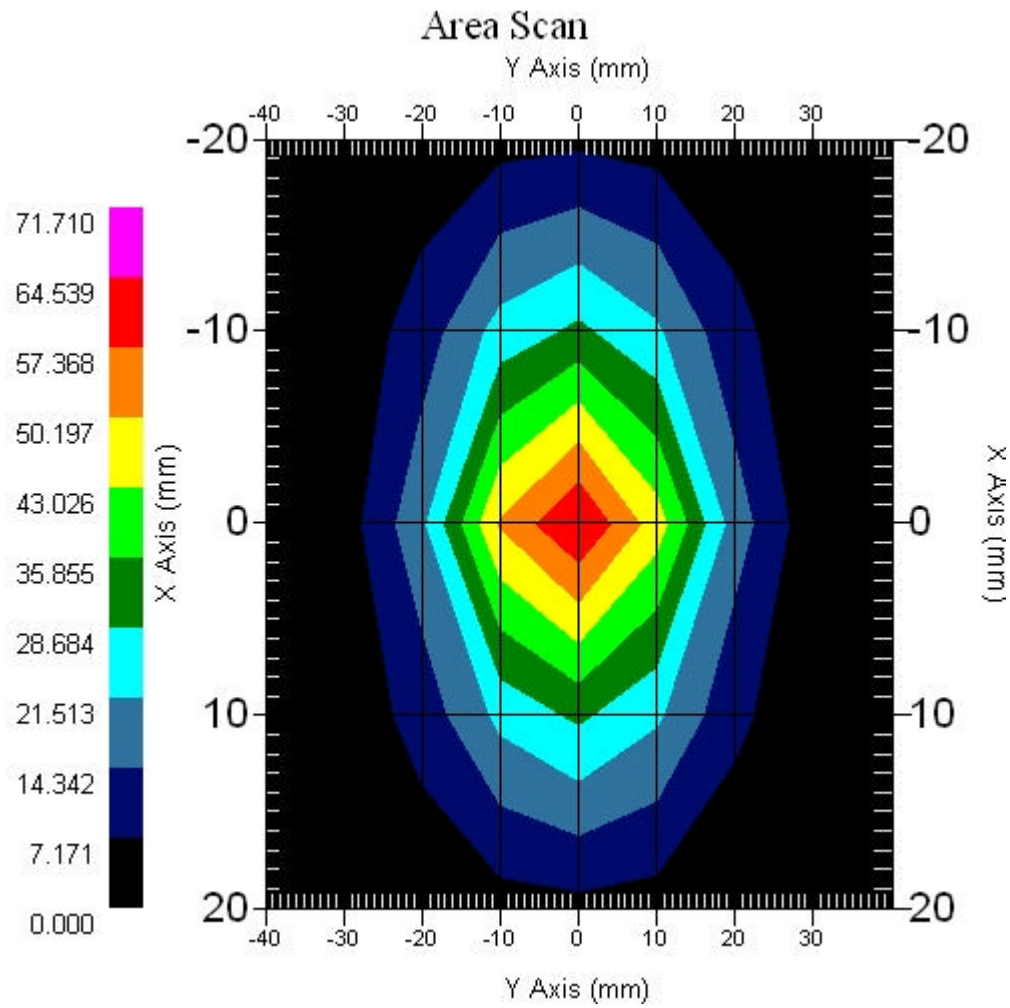
Probe Data

Name : E-field Probe
Model : ALS-E-020
Type : E-Field Triangle
Serial No. : 266
Last Calib. Date : 22-Jun-2006
Frequency : 2450.00 MHz
Duty Cycle Factor: 1
Conversion Factor: 4.9
Probe Sensitivity: 1.20 1.20 1.20 $\mu\text{V}/(\text{V}/\text{m})^2$
Compression Point: 95.00 mV
Offset : 1.56 mm

Measurement Data

Crest Factor : 1
Tissue Temp. : 23.20 °C
Ambient Temp. : 23.50 °C
Area Scan : 5x9x1 : Measurement x=10mm, y=10mm, z=4mm
Zoom Scan : 7x7x7 : Measurement x=5mm, y=5mm, z=5mm

Channel : Mid - 2450MHz



1 gram SAR value : 53.926 W/kg
10 gram SAR value : 24.821 W/kg
Area Scan Peak SAR : 64.539 W/kg
Zoom Scan Peak SAR : 110.960 W/kg

SAR-Z Axis
at Hotspot x:0.30 y:-2.30

