

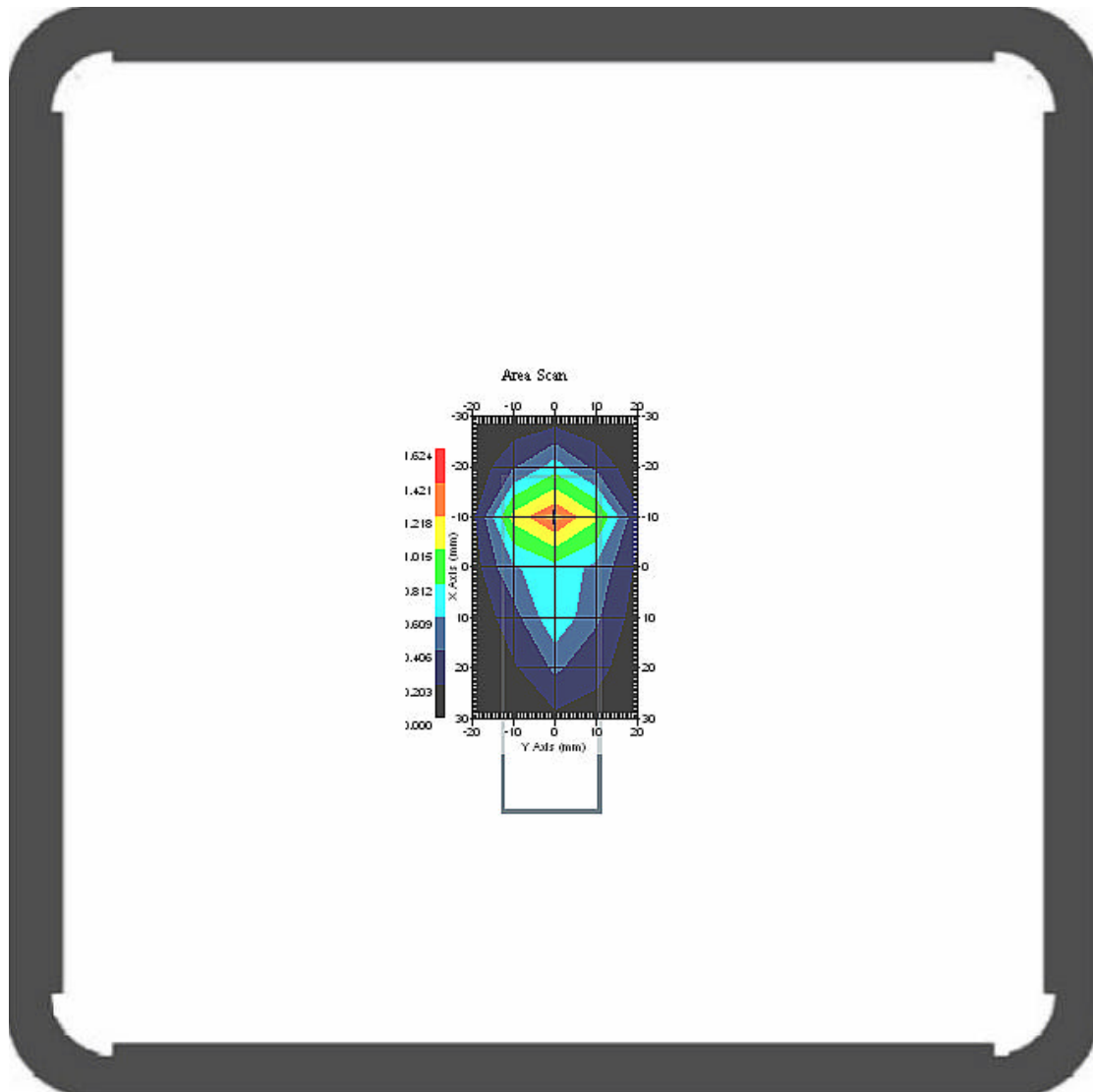
3.3 2450 MHz, EUT Position: Bottom

Measurement Data

Crest Factor : 1
Area Scan : 7x5x1 : Measurement x=10mm, y=10mm, z=4mm
Zoom Scan : 7x7x7 : Measurement x=5mm, y=5mm, z=5mm

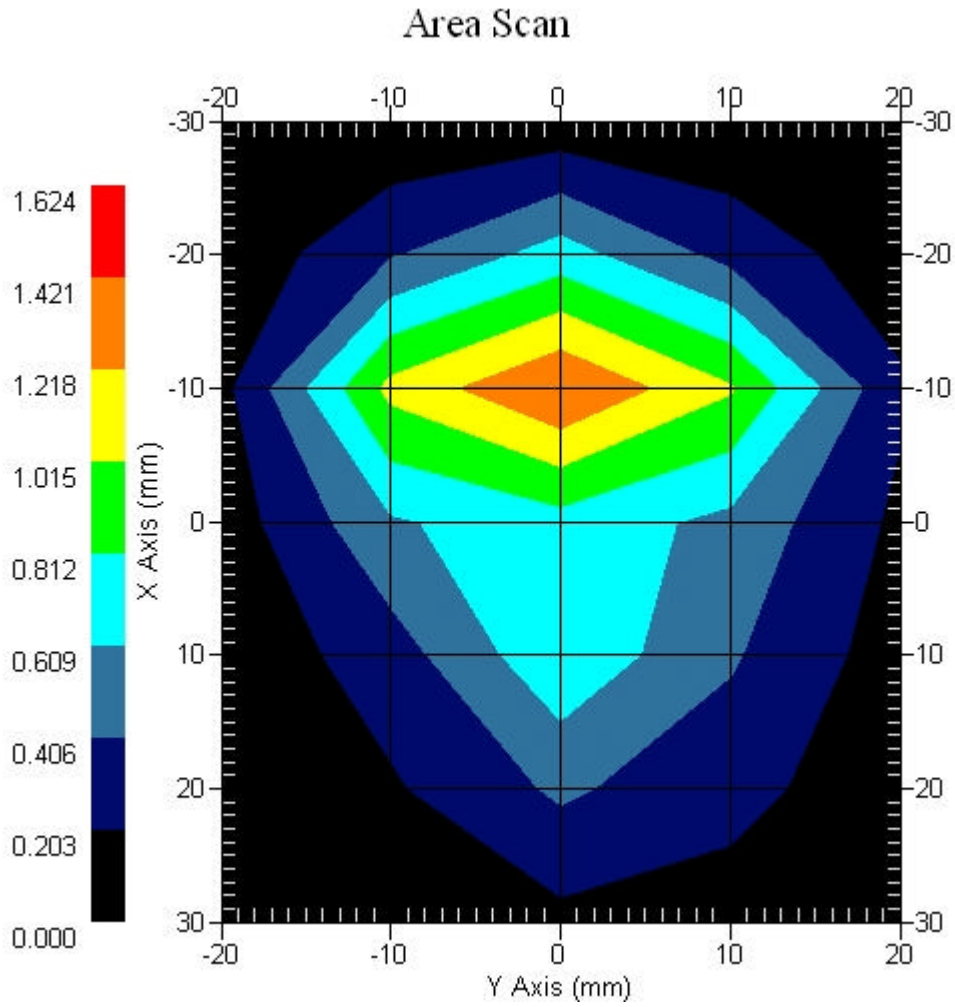
DUT Position : Touch
Channel : High

Power Drift-Start : 1.457 W/kg
Power Drift-Finish: 1.424 W/kg
Power Drift (%) : -2.387



1 gram SAR value : 1.233 W/kg
10 gram SAR value : 0.507 W/kg
Area Scan Peak SAR : 1.423 W/kg
Zoom Scan Peak SAR : 2.782 W/kg

Area Scan Plot



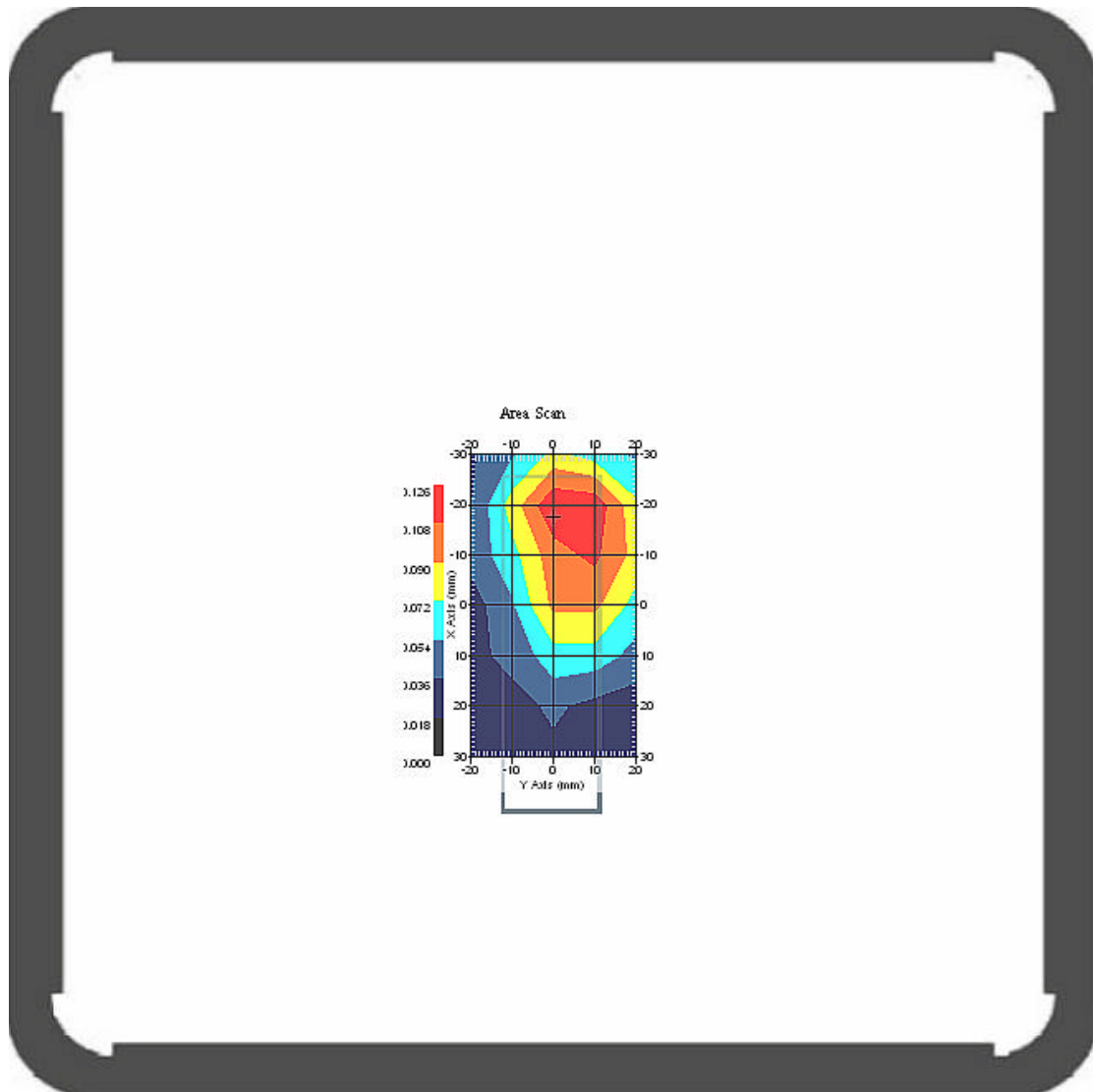
3.4 2450 MHz, EUT Position: Front

Measurement Data

Crest Factor : 1
Area Scan : 7x5x1 : Measurement x=10mm, y=10mm, z=4mm
Zoom Scan : 7x7x7 : Measurement x=5mm, y=5mm, z=5mm

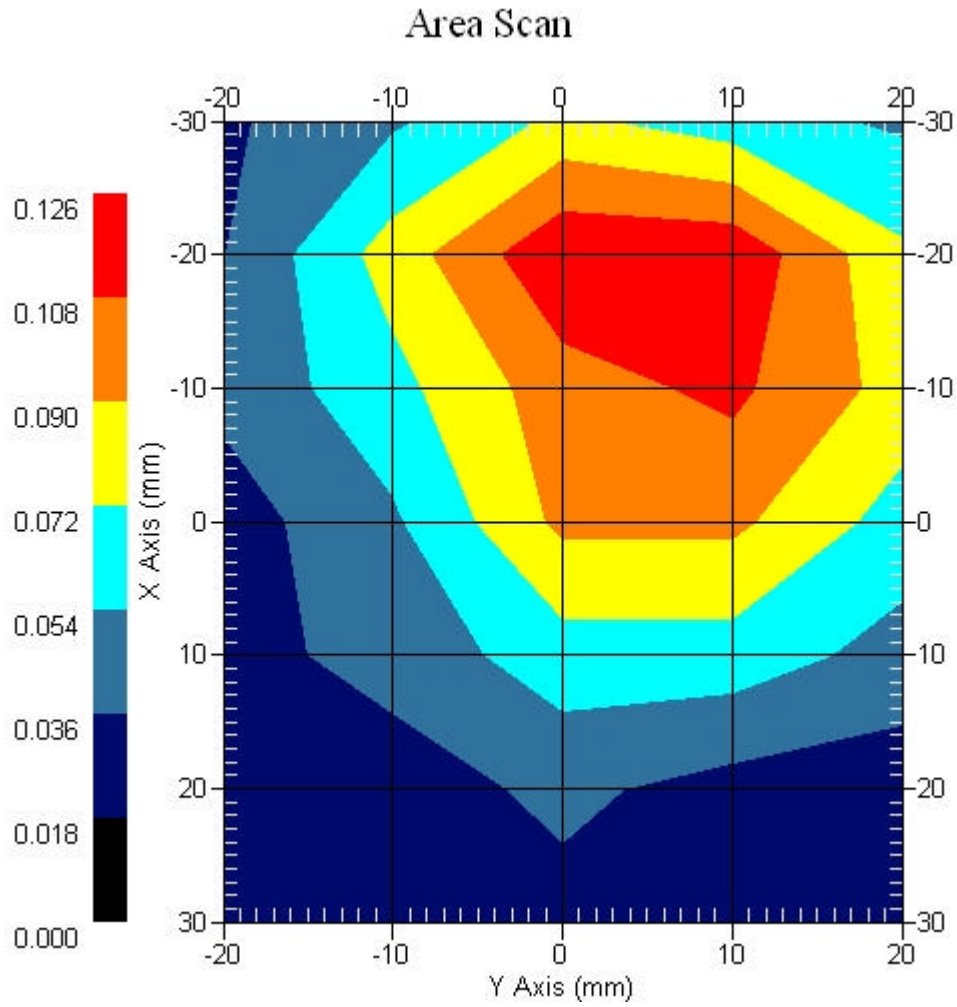
DUT Position : Touch
Channel : Mid

Power Drift-Start : 0.122 W/kg
Power Drift-Finish: 0.119 W/kg
Power Drift (%) : -2.521



1 gram SAR value : 0.102 W/kg
10 gram SAR value : 0.057 W/kg
Area Scan Peak SAR : 0.123 W/kg
Zoom Scan Peak SAR : 0.170 W/kg

Area Scan Plot



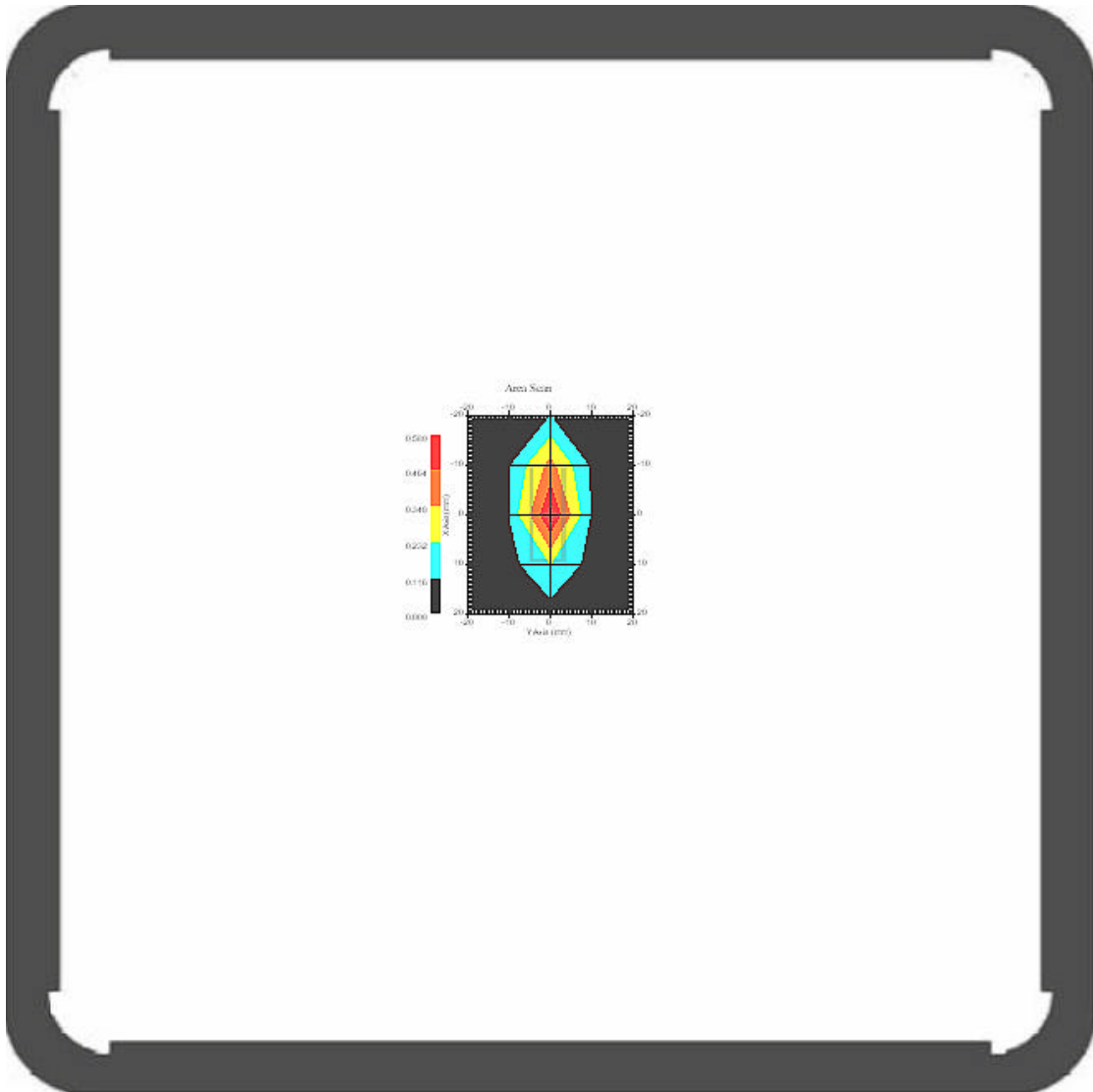
3.5 2450 MHz, EUT Position: Top

Measurement Data

Crest Factor : 1
Area Scan : 5x5x1 : Measurement x=10mm, y=10mm, z=4mm
Zoom Scan : 7x7x7 : Measurement x=5mm, y=5mm, z=5mm

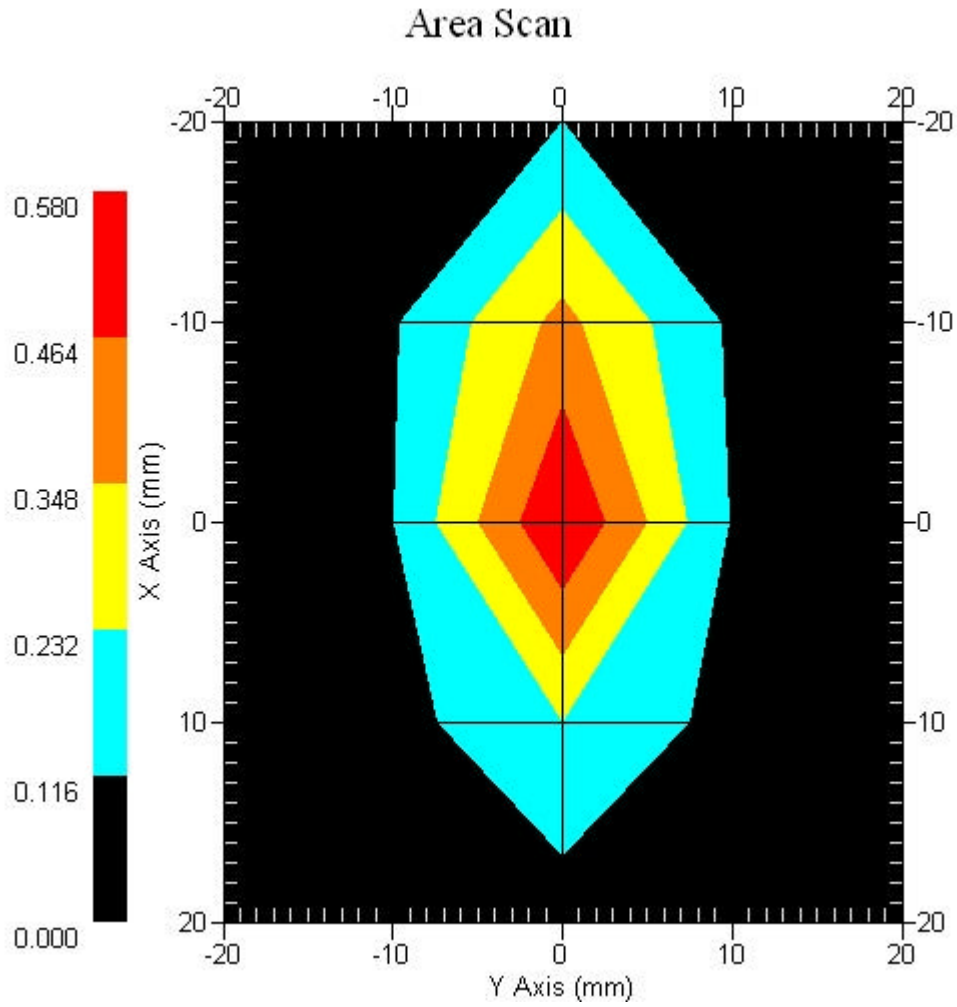
DUT Position : Touch
Channel : Mid

Power Drift-Start : 0.578 W/kg
Power Drift-Finish: 0.576 W/kg
Power Drift (%) : -0.320



1 gram SAR value : 0.409 W/kg
10 gram SAR value : 0.154 W/kg
Area Scan Peak SAR : 0.580 W/kg
Zoom Scan Peak SAR : 1.070 W/kg

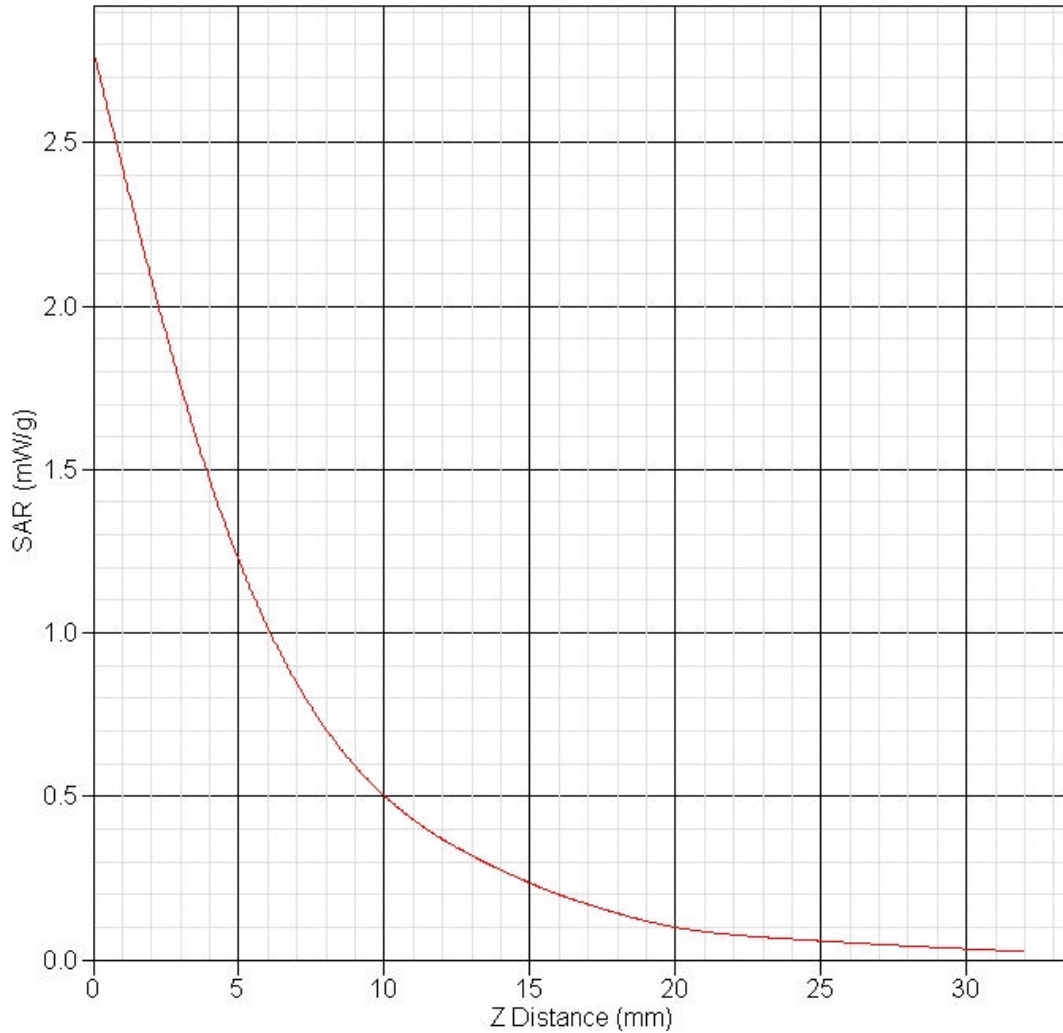
Area Scan Plot



3.6 2450 MHz Z-Axis plot

Frequency: 802.11n_20M, 2450 MHz, EUT Bottom

SAR-Z Axis
at Hotspot x:-9.80 y:-0.15





4 802.11n_40M 2450HMz SAR measurement Data

SAR Test Report

Report Date : 19-Mar-2007
Measurement Date : 19-Mar-2007

Product Data

Device Name : WL-160n
Serial No. :
Type : Other
Frequency : 2450.00 MHz
Max. conducted Transmit Pwr : 24.74dBm
Drift Time : 0 min(s)
Length : 80 mm
Width : 25 mm
Depth : 2 mm
Antenna Type : Internal

Phantom Data

Name : APREL-Uni
Type : Uni-Phantom
Size (mm) : 280 x 280 x 200
Location : Center

Tissue Data

Type : BODY
Serial No. : 2450_Body
Frequency : 2450.00 MHz
Last Calib. Date : 19-Mar-2007
Temperature : 21.40 °C
Ambient Temp. : 21.50 °C
Humidity : 48.00 RH%
Epsilon : 53.66 F/m
Sigma : 1.89 S/m
Density : 1000.00 kg/cu. m

Probe Data

Name : E-field Probe
Model : ALS-E-020
Type : E-Field Triangle
Serial No. : 266
Last Calib. Date : 22-Jun-2006
Frequency : 1800.00 MHz
Duty Cycle Factor: 1
Conversion Factor: 5.4
Probe Sensitivity: 1.20 1.20 1.20 $\mu\text{V}/(\text{V}/\text{m})^2$
Compression Point: 95.00 mV
Offset : 1.56 mm

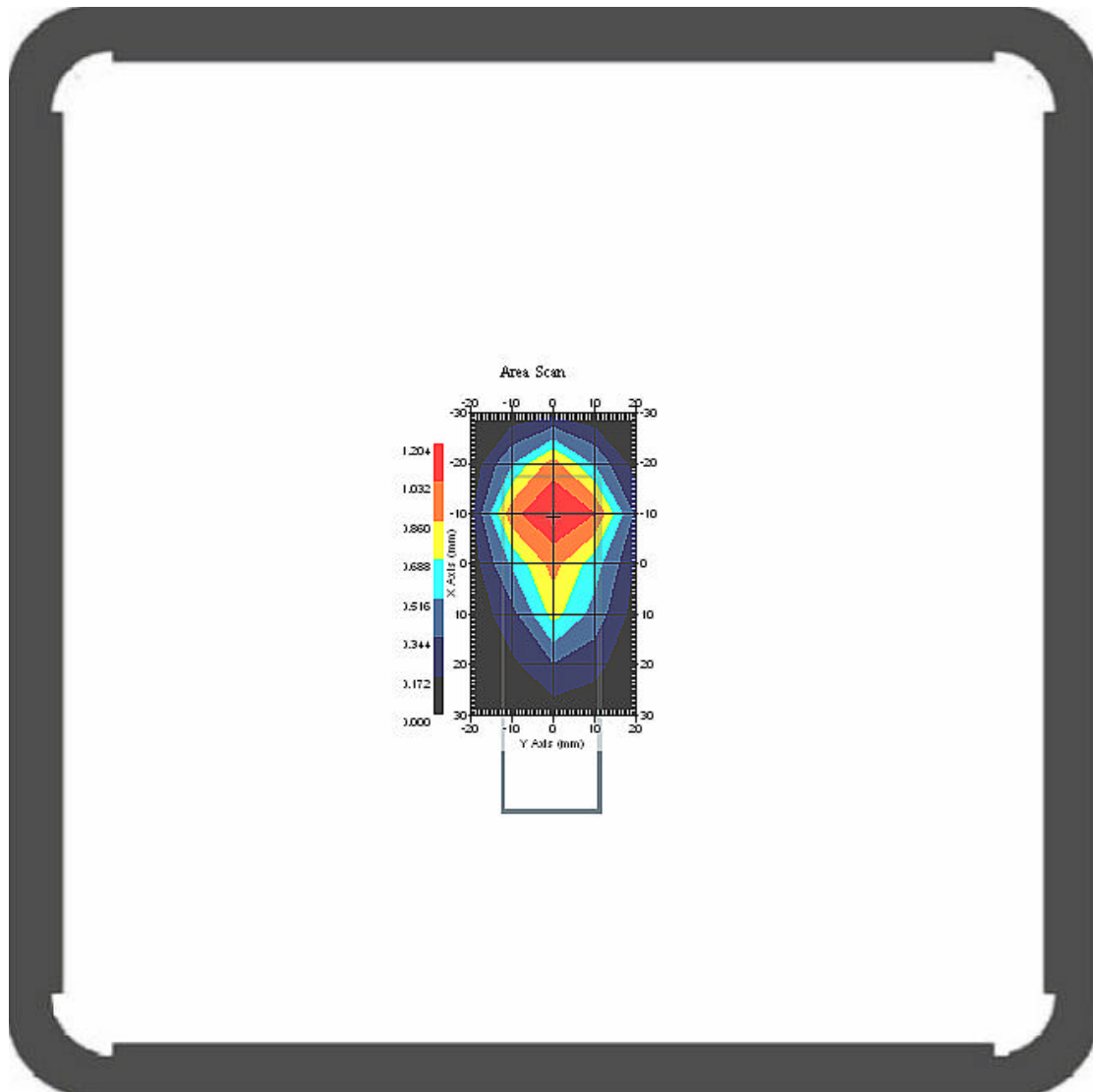
4.1 2450 MHz, EUT Position: Bottom

Measurement Data

Crest Factor : 1
Area Scan : 7x5x1 : Measurement x=10mm, y=10mm, z=4mm
Zoom Scan : 7x7x7 : Measurement x=5mm, y=5mm, z=5mm

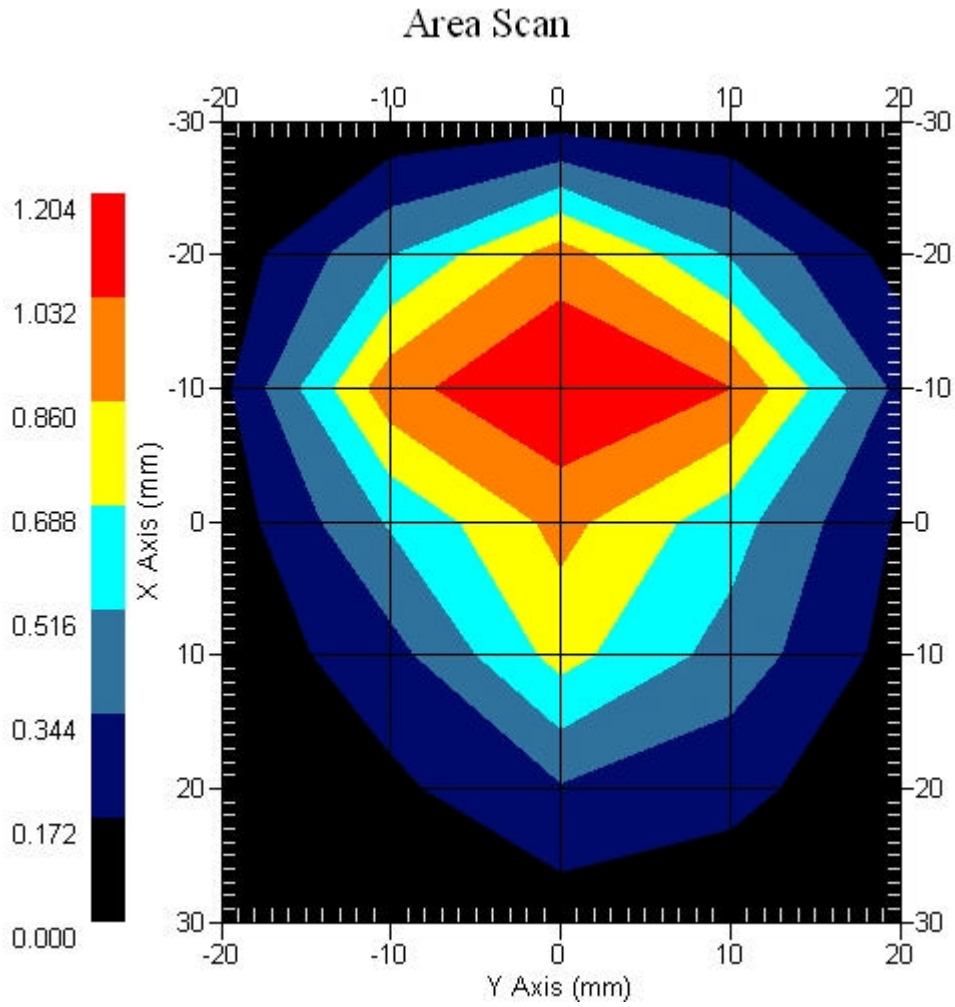
DUT Position : Touch
Channel : Low

Power Drift-Start : 1.211 W/kg
Power Drift-Finish: 1.215 W/kg
Power Drift (%) : 0.326



1 gram SAR value : 1.187 W/kg
10 gram SAR value : 0.552 W/kg
Area Scan Peak SAR : 1.203 W/kg
Zoom Scan Peak SAR : 2.312 W/kg

Area Scan Plot



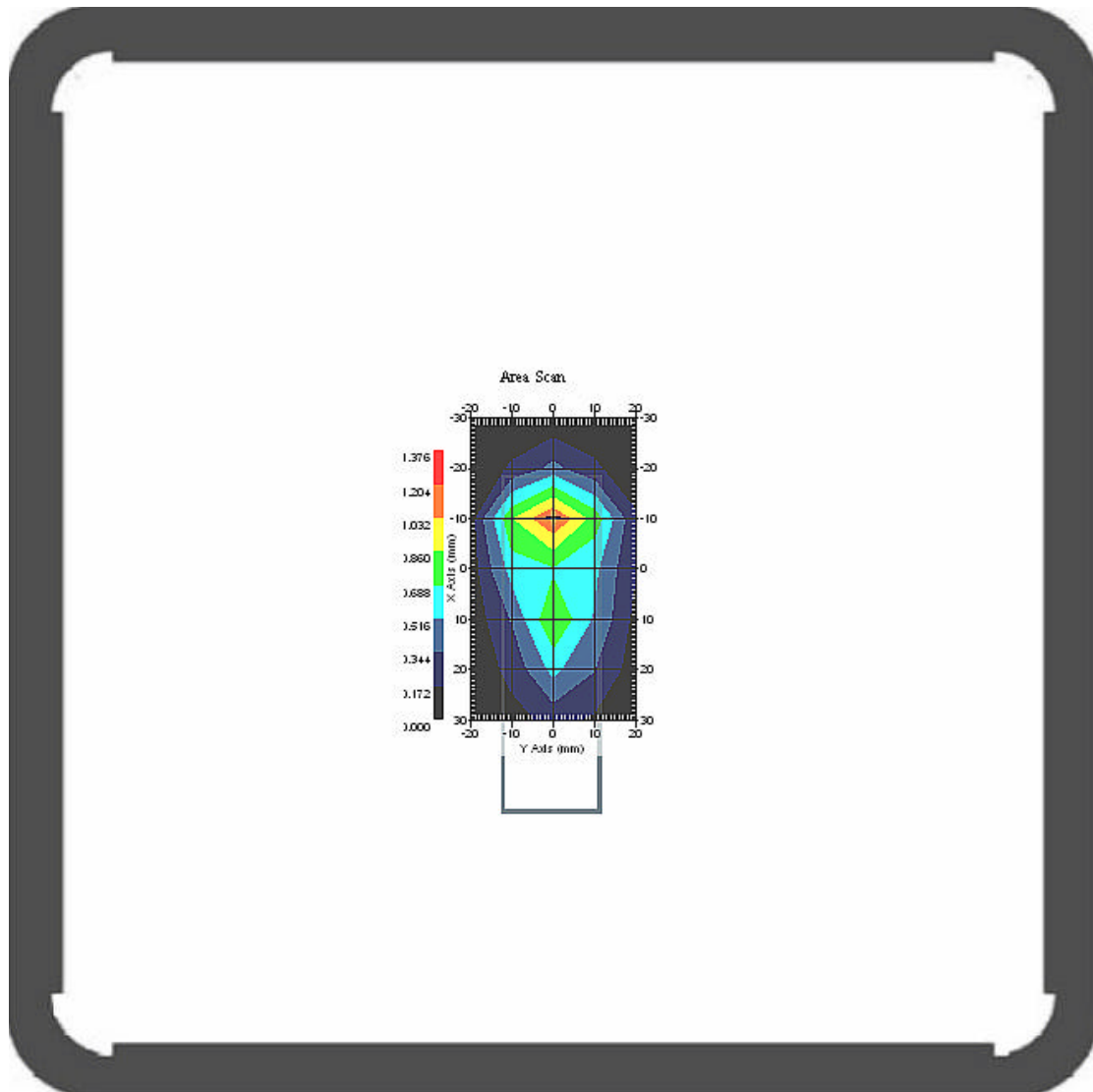
4.2 2450 MHz, EUT Position: Bottom

Measurement Data

Crest Factor : 1
Area Scan : 7x5x1 : Measurement x=10mm, y=10mm, z=4mm
Zoom Scan : 7x7x7 : Measurement x=5mm, y=5mm, z=5mm

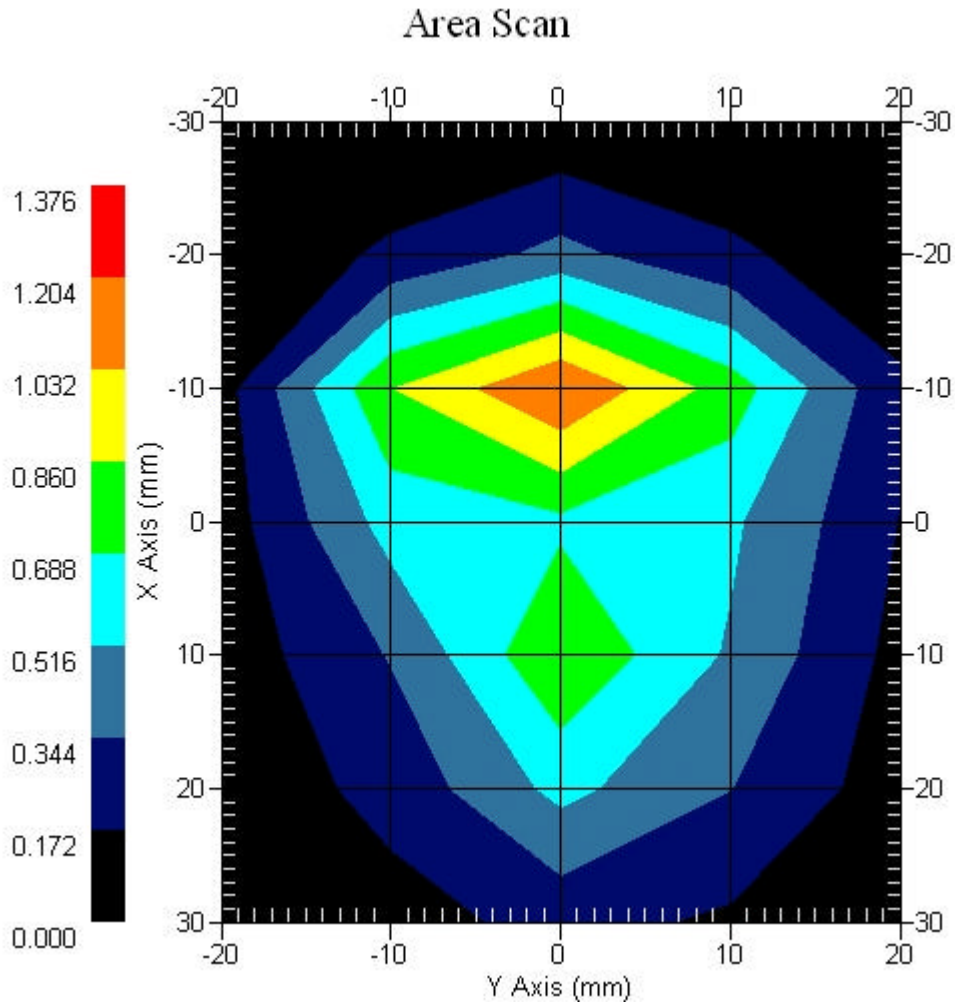
DUT Position : Touch
Channel : Mid

Power Drift-Start : 1.157 W/kg
Power Drift-Finish: 1.198 W/kg
Power Drift (%) : 3.577



1 gram SAR value : 0.986 W/kg
10 gram SAR value : 0.417 W/kg
Area Scan Peak SAR : 1.205 W/kg
Zoom Scan Peak SAR : 2.321 W/kg

Area Scan Plot



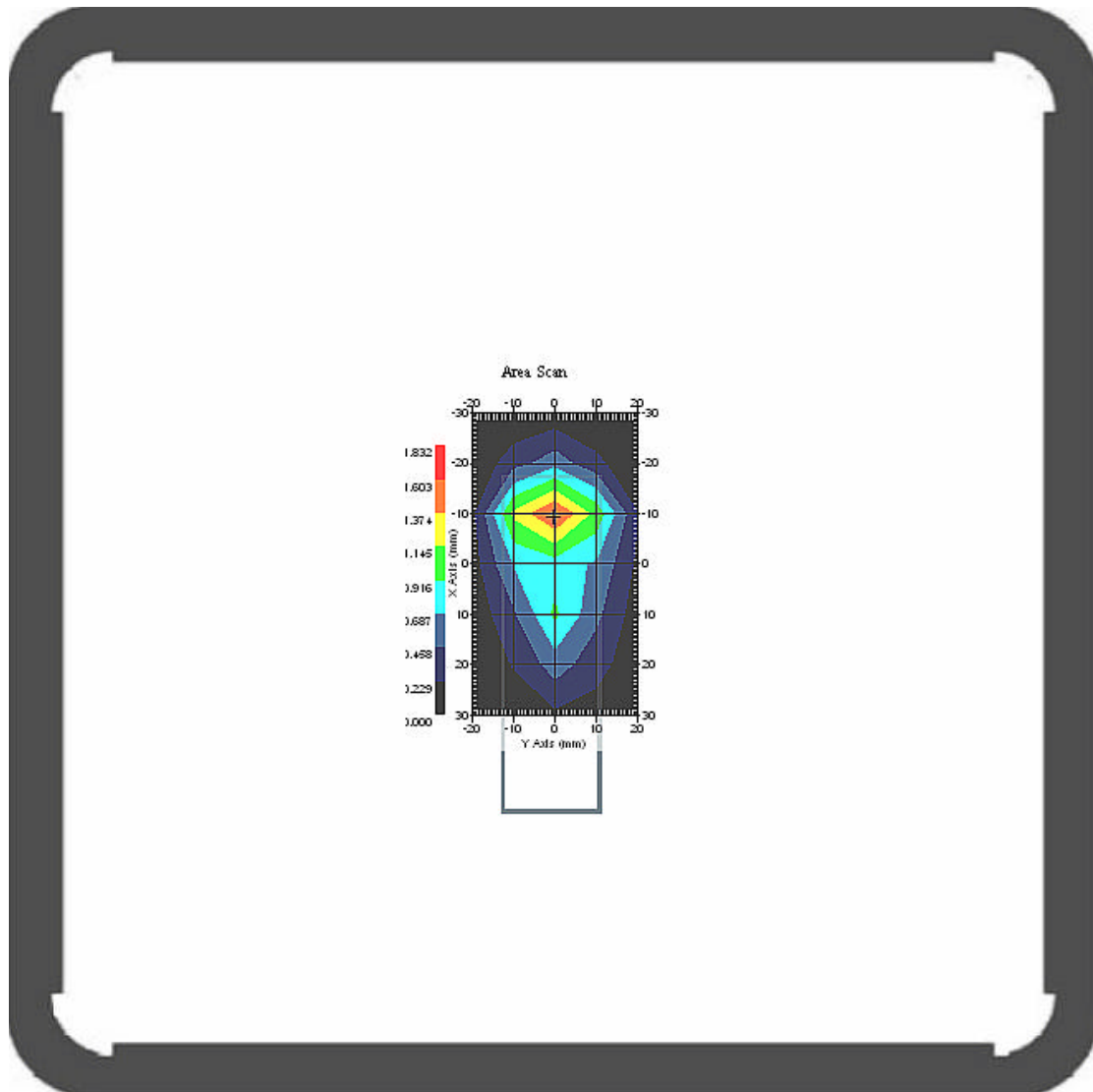
4.3 2450 MHz, EUT Position: Bottom

Measurement Data

Crest Factor : 1
Area Scan : 7x5x1 : Measurement x=10mm, y=10mm, z=4mm
Zoom Scan : 7x7x7 : Measurement x=5mm, y=5mm, z=5mm

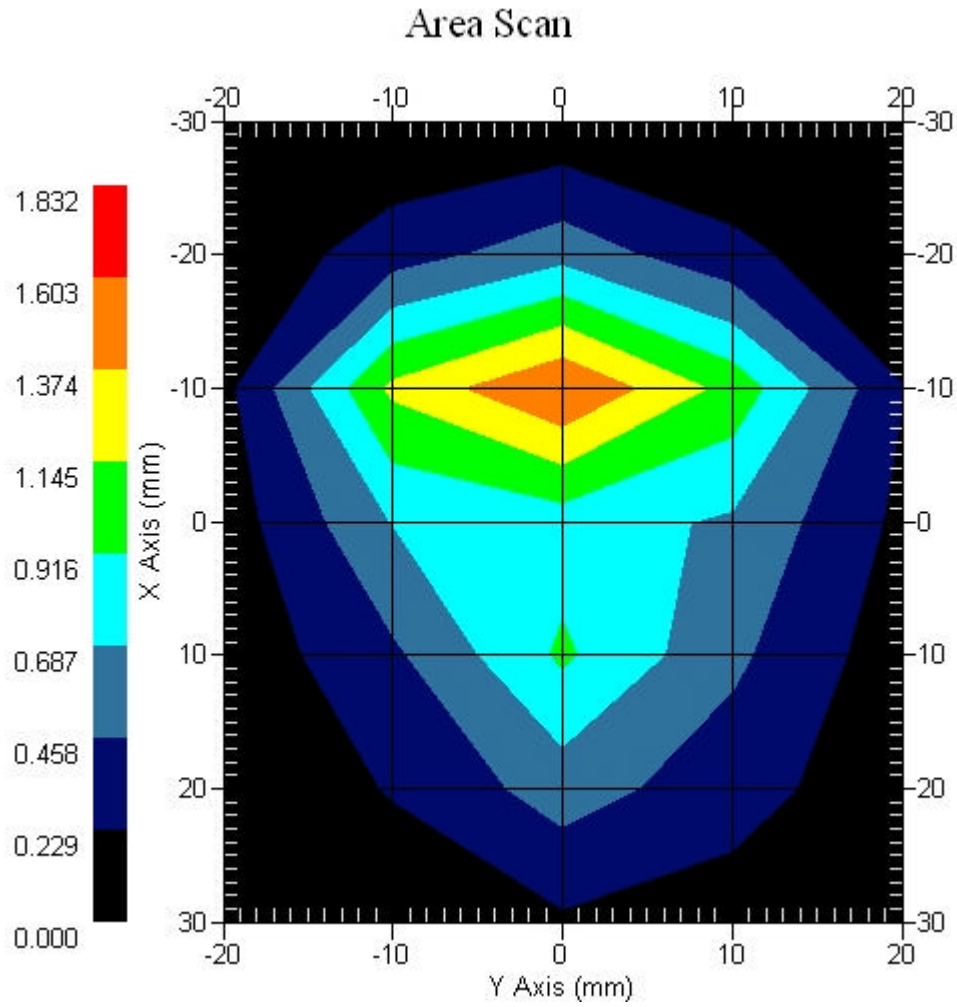
DUT Position : Touch
Channel : High

Power Drift-Start : 1.601 W/kg
Power Drift-Finish: 1.587 W/kg
Power Drift (%) : -0.864



1 gram SAR value : 1.317 W/kg
10 gram SAR value : 0.548 W/kg
Area Scan Peak SAR : 1.605 W/kg
Zoom Scan Peak SAR : 3.112 W/kg

Area Scan Plot



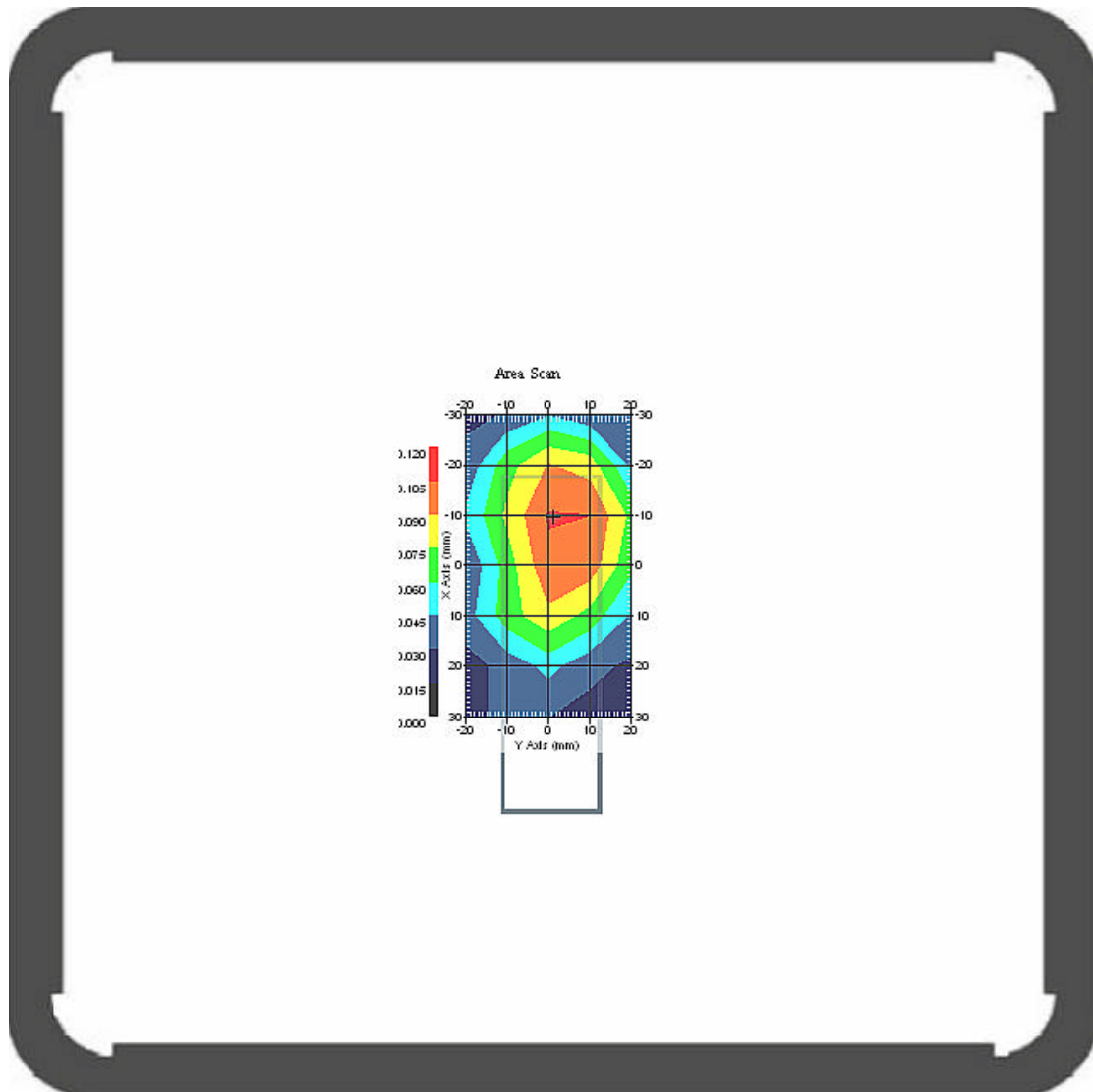
4.4 2450 MHz, EUT Position: Front

Measurement Data

Crest Factor : 1
Area Scan : 7x5x1 : Measurement x=10mm, y=10mm, z=4mm
Zoom Scan : 7x7x7 : Measurement x=5mm, y=5mm, z=5mm

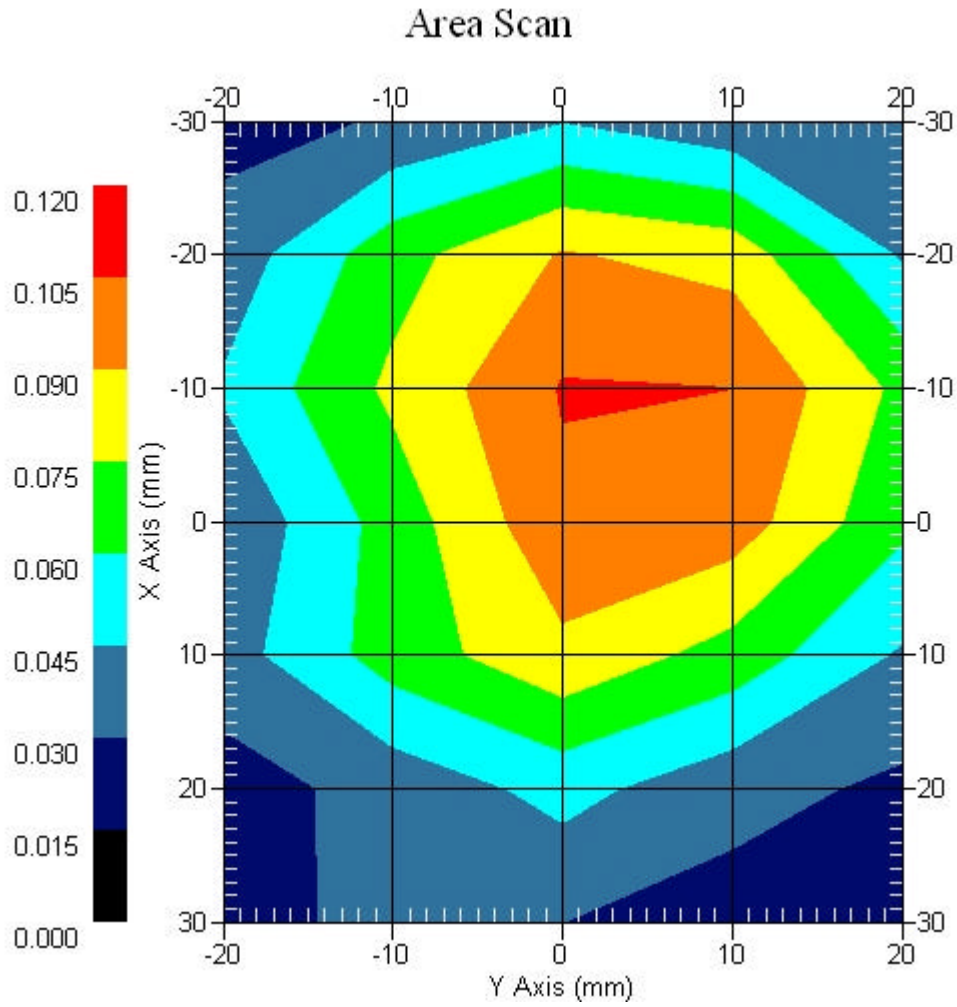
DUT Position : Touch
Channel : Mid

Power Drift-Start : 0.116 W/kg
Power Drift-Finish: 0.114 W/kg
Power Drift (%) : -1.770



1 gram SAR value : 0.106 W/kg
10 gram SAR value : 0.061 W/kg
Area Scan Peak SAR : 0.106 W/kg
Zoom Scan Peak SAR : 0.180 W/kg

Area Scan Plot



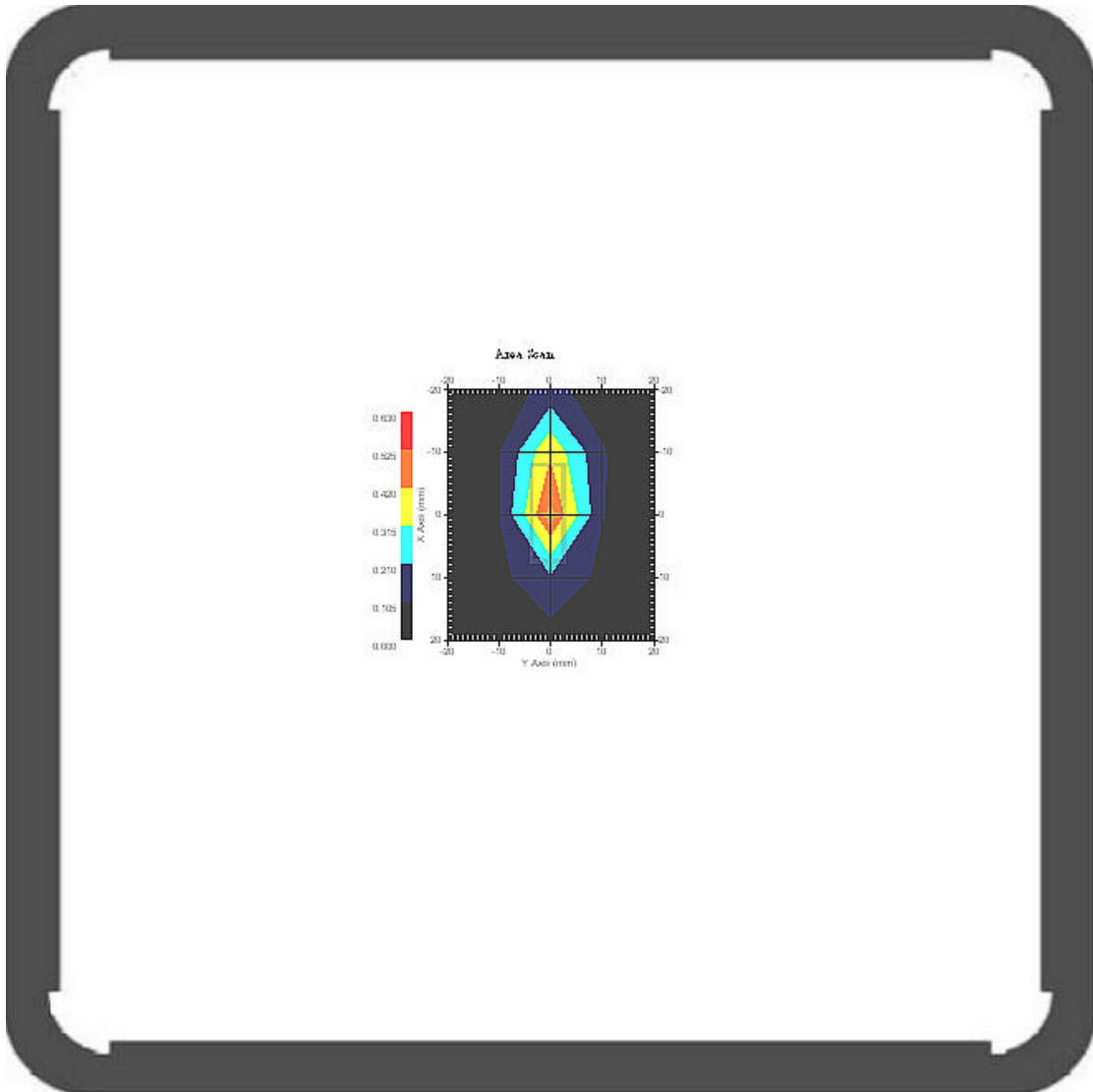
4.5 2450 MHz, EUT Position: Top

Measurement Data

Crest Factor : 1
Area Scan : 5x5x1 : Measurement x=10mm, y=10mm, z=4mm
Zoom Scan : 7x7x7 : Measurement x=5mm, y=5mm, z=5mm

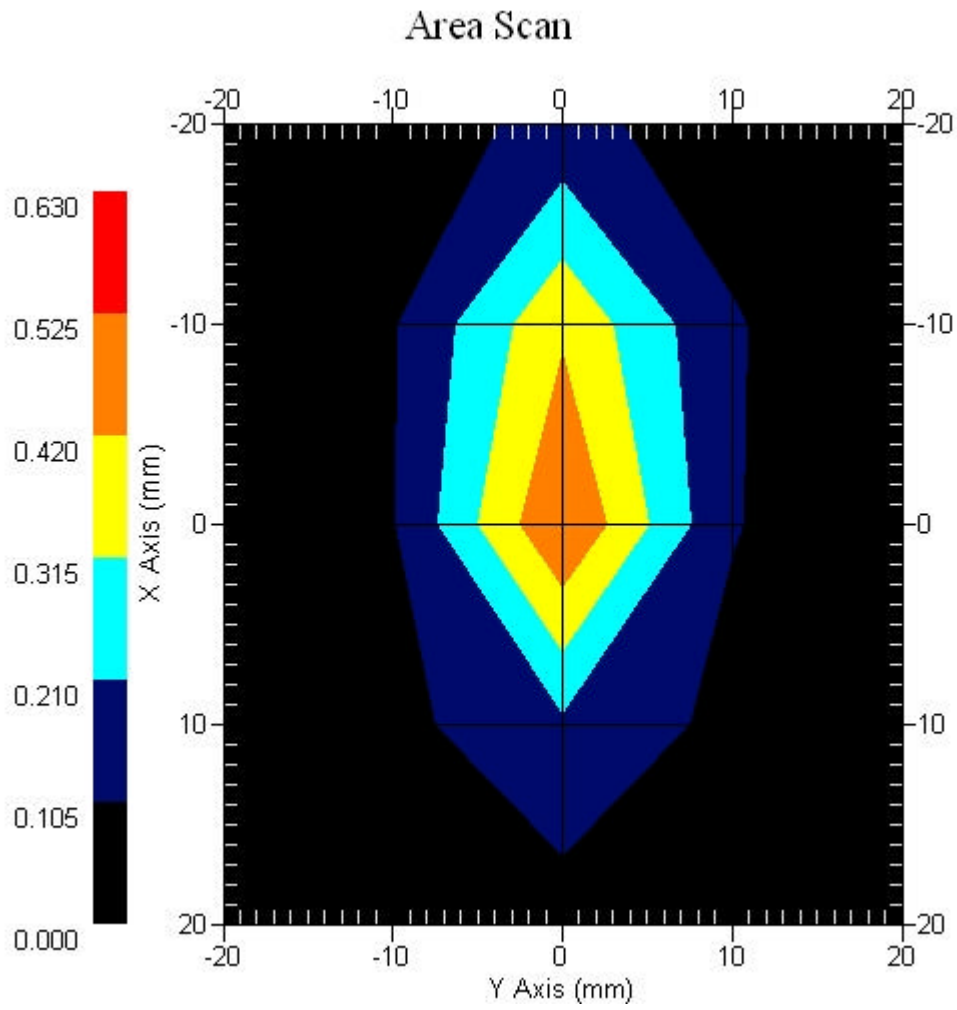
DUT Position : Touch
Channel : Mid

Power Drift-Start : 0.566 W/kg
Power Drift-Finish: 0.545 W/kg
Power Drift (%) : -3.477



1 gram SAR value : 0.381 W/kg
10 gram SAR value : 0.147 W/kg
Area Scan Peak SAR : 0.526 W/kg
Zoom Scan Peak SAR : 0.960 W/kg

Area Scan Plot



4.6 2450MHz Z-Axis plot

Frequency: 802.11n_40M, 2450MHz, EUT Bottom

SAR-Z Axis
at Hotspot x:-9.80 y:-0.15

