



3. Enter "Pocket PC", and then hit the [Enter] key

The new name will appear.





Bluetooth Manager

This section provides detailed information on the settings categories in Bluetooth Manager.

Main menu



Category	Description
Bluetooth Settings	Opens [Bluetooth Settings] window.
Wireless File Transfer	Open the [Wireless File Transfer] window.

Remote Camera	Open the [Remote Camera] window.
Add New Connection	Opens the [Add New Connection Wizard] window.
Device Properties & Security	<p>Displays Bluetooth device information on your PC.</p> <p>[General] tab</p> <p>Allows you to confirm the name, address and other settings displayed for other devices.</p>  <p>[Security] tab</p> <p>Security-related (user) settings can be configured under this tab.</p>  <p>Note</p> <ul style="list-style-type: none"> • [Device Name] is the only category able to be changed. If you wish to change the name of a device, enter the new name, and click on the [OK] or [Apply] button. • Click on the [Default] button to restore the initial settings.



Note

- Click on the [Default] button to restore the initial settings.

Category	Description
Discoverability mode	Non-discoverable mode Other devices will not be able to detect yours.
	Discoverable mode Other devices will be able to detect yours.
Connectability mode	Non-connectable mode Other devices will not be able to connect to yours. ¹⁾
	Connectable mode Other devices will be able to connect to yours.
Pairing mode	Non-pairable mode ²⁾ You will not receive pairing requests initiated from remote devices.
	Pairable mode You will receive pairing requests initiated from remote devices.
Security mode	Non-secure mode No security will be enforced.
	Link Level Security Enforced ³⁾ Requires Bluetooth passkey (PIN code) to be entered on connection with another device.
	Encryption Encrypts data to be transmitted.

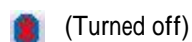
1) Selecting Non-connectable mode will cause connection requests rejected from any device, including registered ones. Device detection will still be possible.

2) Selecting Non-pairable mode will make it impossible to bond another device in a new connection relationship. Connection will be possible when a request has been received from a registered device. Device detection will still be possible.

3) Devices to which you have initially connected by entering a PIN will not require you to do so for future connections. Connection will be possible even if Link Level Security has been selected.

Power off

Turns off Bluetooth



 **Important**

- Communication using Bluetooth will be impossible once it been turned off. When you next wish to use Bluetooth, please right-click on the Bluetooth icon in the task tray, and then click [Power ON].



Service Properties

Ensures security against various kinds of access from remote devices.


Here you can enable or disable the following four typical services that are accessed remotely.



 **Note**

- This function is designed to provide robust security against access from remote devices. The "enable/disable" controls only restrict access made from remote devices. You will still be able to connect to remote devices from your local device, regardless of the in settings.
- Remove the tick from each button to disable the related function.

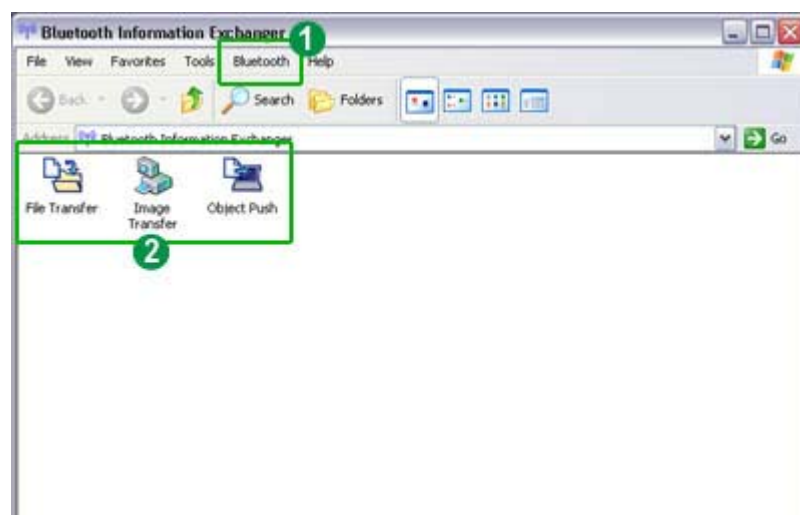
Category	Description
Bluetooth Information Exchange Service	Ticking the box enables a (server) function that allows files, images, business cards to be transferred from a remote device using Bluetooth Information Exchange.

	<table border="1"> <tr> <td>PAN Networking Service</td> <td>Ticking the box enables a (server function that allows networking to performed from a remote device u PAN Networking Service.</td> </tr> <tr> <td>Bluetooth COM Port Service</td> <td>Ticking the box enables a (server function that allows COM Service performed from a remote location the Serial Port Service.</td> </tr> <tr> <td>AV Remote Control Service</td> <td>Ticking the box enables a (server function that allows remote contro performed from a remote device u AV Remote Control Service.</td> </tr> </table>	PAN Networking Service	Ticking the box enables a (server function that allows networking to performed from a remote device u PAN Networking Service.	Bluetooth COM Port Service	Ticking the box enables a (server function that allows COM Service performed from a remote location the Serial Port Service.	AV Remote Control Service	Ticking the box enables a (server function that allows remote contro performed from a remote device u AV Remote Control Service.
PAN Networking Service	Ticking the box enables a (server function that allows networking to performed from a remote device u PAN Networking Service.						
Bluetooth COM Port Service	Ticking the box enables a (server function that allows COM Service performed from a remote location the Serial Port Service.						
AV Remote Control Service	Ticking the box enables a (server function that allows remote contro performed from a remote device u AV Remote Control Service.						
Help	Displays the Bluetooth Utility User Guide.						
Exit	<p>Exits Bluetooth Manager.</p> <p> Important</p> <ul style="list-style-type: none"> When you exit Bluetooth Manager, Bluetooth communicati be disabled. When you next wish to use Bluetooth, please c [Start] [All Programs] [Bluetooth] [Bluetooth Setting Windows 2000, click on [Start] [Programs] [Bluetooth] [Bluetooth Settings]). 						

Bluetooth Information Exchanger

This section provides detailed information on the settings categories in Bluetooth Information Exchanger.

Main window


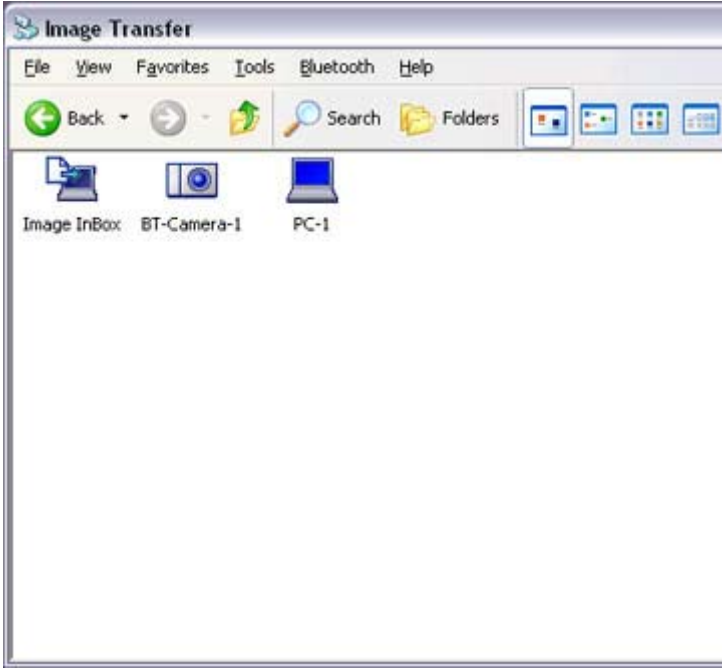






1 Bluetooth menu

Category	Description
Device Discovery	Detects Bluetooth devices.
Configuration	Allows detailed setting of categories related to Bluetooth Information Exchanger. <div data-bbox="762 535 1390 1290" data-label="Image"> </div> <ul style="list-style-type: none"> -[General] tab -[Mode] tab -[Inbox/Business Card] tab -[Shared folder] tab -[Image box] tab -[Associate] tab -[Transfer mode] tab -[Service security] tab -[Service class] tab -[Information] tab -[Version] tab
Help	Displays Bluetooth Utility User Guide.

2 Data exchange folders

Three folders are available for data exchange: "Image transfer", "File transfer" and "Object Push".

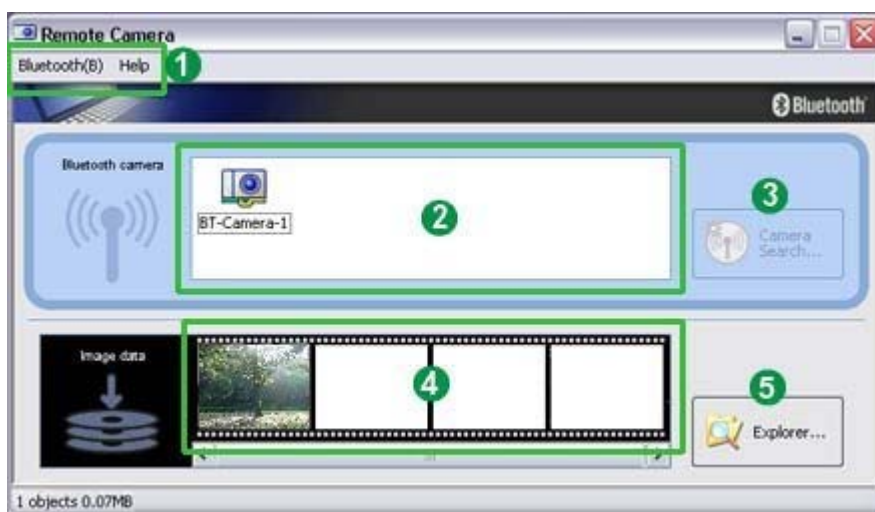
Category	Description
 <p data-bbox="603 259 660 297">Image Transfer</p>	<p data-bbox="727 197 1457 255">Click on the icon to display a list of devices. "Image box" is a folder on transferring images.</p> 
 <p data-bbox="603 1043 660 1081">File Transfer</p>	<p data-bbox="727 981 1457 1039">Click on the icon to display a list of devices. "Shared folder" is a share transferring files.</p> 
 <p data-bbox="603 1827 660 1865">Object Push</p>	<p data-bbox="727 1765 1457 1823">Click on the icon to display a list of devices. "Inbox" is a folder on you business cards.</p> 



Remote Camera


This section provides detailed information on the settings categories in Remote Camera.

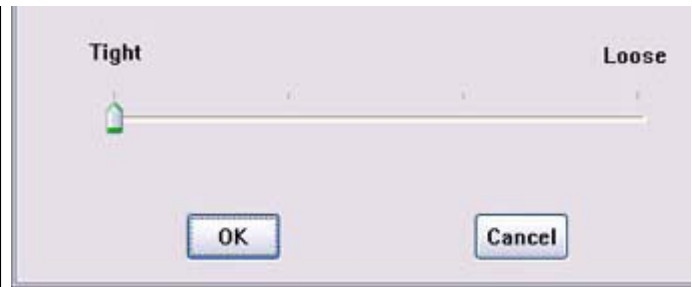
Main window



1 Menu

[Bluetooth] menu

Category	Description
Device Search	Searches for remote cameras.
Properties	[Filter for Search Devices] 



The program may discover devices other than digital cameras, depending on which profiles are supported by those devices.

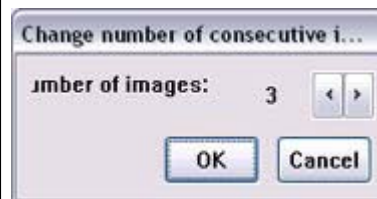
Adjusting the setting to "Loose filtering" will increase the likelihood devices other than those intended will be detected.

The further you slide the setting towards "Tight filtering", the stricter will be the criteria determining device detection, and the lower the likelihood will be that irrelevant devices will be included.

Please adjust the filtration level according to the results of the search.

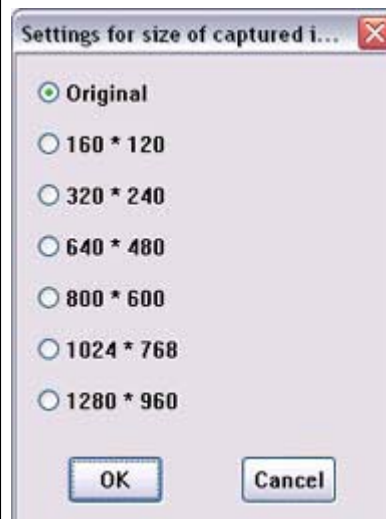
[Multi Shot]

Allows you to set the number of consecutive images captured by your digital camera in the dialog box below (between 2 and 16 inclusive).



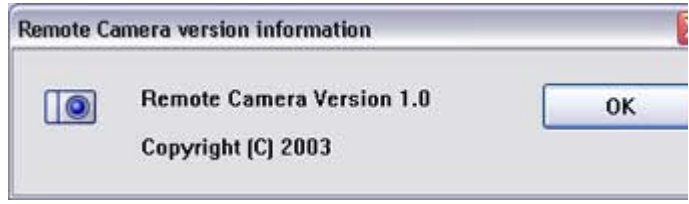
[Pixel Size]

Images will be sent to your PC after having been automatically converted to the size specified in the dialog box below, regardless of the size of the original image data.



	<p>[Inbox settings]</p> <p>Opens the "Browse folders..." dialog box and allows you to select the folder where you would like your captured images to be saved.</p>
Exit	Exits Remote Camera.

[Help] menu

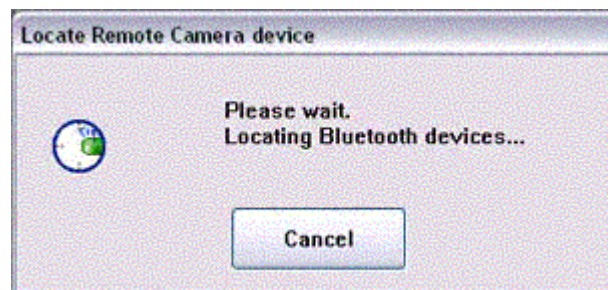
Category	Description
Image monitor version information	<p>Displays version information for the image monitor.</p> 

2 List of cameras

A list of cameras that have been registered as remote cameras will be displayed.

3 [Camera Search...] button

Clicking on this button will execute a search for remote cameras.



4 Display images

Images transferred to the PC from a remote camera will be displayed.

5 [Explorer...] button

Clicking on this button will display the folders on the hard drive where images that have been transferred to the PC have been stored.





Note

- A folder for saving your images will be created automatically.

Camera operation window



1 Camera images

Images as seen through the lens of your remote camera will be displayed.

2 Display magnification

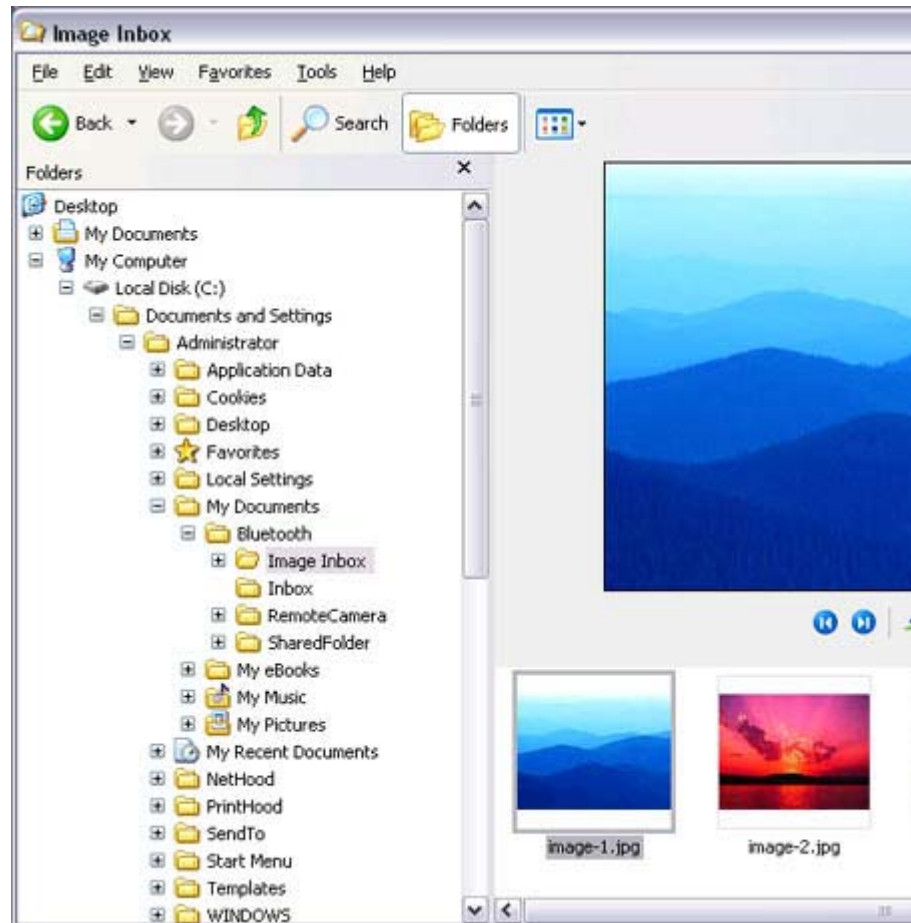
The size of the operating window display can be adjusted from 100% (1x) to 300% (3x).

Important

- Increasing the size of the operating window will impede its ability to display image and will have an adverse effect on other processes being performed by your PC. Pl adjust the magnification as appropriate for your intended use.

3 [Explorer...] button

Clicking on this button will display the folders on the hard drive where images that have transferred to the PC have been stored.



4 Shutter button (consecutive images)

Clicking this button will cause the camera to take the number of images specified in [Consecutive image settings] under the [Bluetooth] menu and then send those images to y PC.

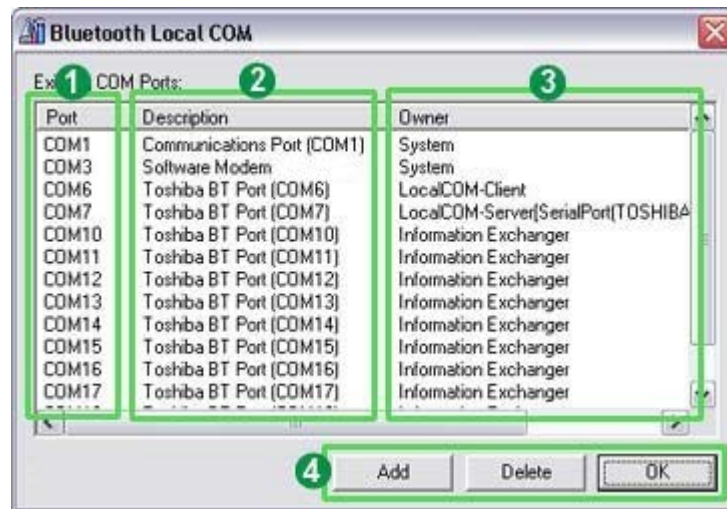
5 Shutter button (single images)

Clicking this button will cause the camera to take one picture and then send the image to PC.

Bluetooth Local COM

This section provides detailed information on the settings categories in Bluetooth Local COM

Main window



1 Port

Displays a list of configured ports.

2 Description

Displays the function of each port.

Ports displayed as "Toshiba BT Port (COMxx)" are TOSHIBA Bluetooth virtual COM p


3 Owner


Displays the application used to create those COM ports.

The following information will appear for ports created by Bluetooth Local COM.

COM port for client	Local COM - Client
COM port for server	Local COM - Server [(name of service supplied by port)]

4 Function buttons

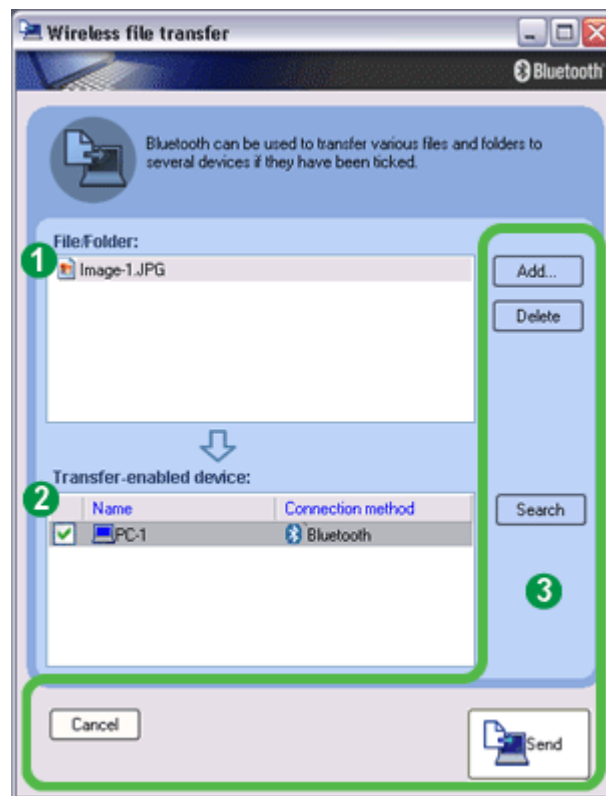
Category	Description
Add	Starts the Add COM Port Wizard.
	<p> Note</p> <ul style="list-style-type: none"> There can be up to 64 ports. If COM ports 1 to 64 already exist, you will not be able to add another port.
Delete	Deletes selected port.

	<p> Note</p> <ul style="list-style-type: none"> You can only delete COM ports created by Bluetooth Local COM.
OK	Click on this button to confirm settings information, and close the Bluetooth Local COM window.

Wireless File Transfer

This section provides detailed information on the settings categories in Wireless File Transfer.

Main window



1 Files/folders

Displays a list of files/folders to be sent.

2 Devices to which data can be sent

Displays other devices to which you are able to send files. Files will be sent to those devices that have been checked.

Name

Displays name of destination devices.

Connection method

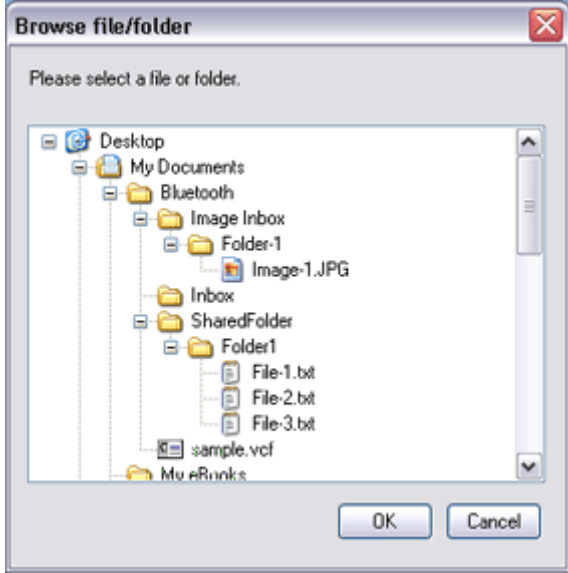
Connect method

Displays method used to connect to other devices.

Note

- If a device to which you would like to send data is not listed, you can click on the [Search] button to search for other devices.

3 Function buttons

Category	Description
Add	Displays the window below, from where you can add files and/or folders you would like to send. 
Delete	By selecting a file from the list and clicking on the "Delete" button, you can remove that file (i.e., the file will not be sent).
Search	Searches for Bluetooth devices.
Cancel	Closes the "Wireless File Transfer" window.
Send	Sends a file.

Troubleshooting

This section describes possible causes and countermeasures to be considered when your Blue device cannot be configured properly, functions abnormally or presents other problems relate its operation.

Basic understanding

The section "[What you need to know about using Bluetooth](#)" describes the basic concep be aware of when using Bluetooth. Should you still encounter problems after having read through this information, please refer to the following list, which has been arranged acco to application.

Troubleshooting by application

- [General operation of the Bluetooth Utility](#)
- [Using a wireless modem station](#)
- [Using an access point](#)
- [Using a printer](#)
- [Using a Bluetooth headset](#)
- [Using a keyboard or mouse](#)
- [Using a camera](#)
- [Using a PDA](#)
- [Using a mobile telephone](#)

General operation of the Bluetooth Utility

Important

- Please refer to "[What you need to know about using Bluetooth](#)" for an understanding of the basic concepts to be aware of when using Bluetooth.

Bluetooth Manager

Bluetooth icon does not appear in task tray

- If the Bluetooth icon does not appear in the task tray, Bluetooth Manager will not be active, which will prevent you from being able to use any of the functions of the Bluetooth Utility.

Start the utilities as instructed below to enable Bluetooth Manager to start automatically and allow all functions to be utilized.

Bluetooth Settings

(from Windows XP)

[Start] > [All Programs] > [Bluetooth] > [Bluetooth Settings]

(from Windows 2000)

[Start] > [Programs] > [Bluetooth] > [Bluetooth Settings]

Remote Camera

(from Windows XP)

[Start] > [All Programs] > [Bluetooth] > [Remote Camera]

(from Windows 2000)

[Start] > [Programs] > [Bluetooth] > [Remote Camera]

Wireless File Transfer

(from Windows XP)

[Start] > [All Programs] > [Bluetooth] > [Wireless File Transfer]


(from Windows 2000)

[Start] > [Programs] > [Bluetooth] > [Wireless File Transfer]

Bluetooth Settings

 Clicking on the [New Connection] button brings up the message "Unable to prepare Bluetooth."

- The wireless communication switch is turned off. Please switch it on.

 Remote device(s) cannot be detected

- The other device(s) may have been set to Non -discoverable mode. Please check the mode settings on the device.

 Services on a remote device are undiscoverable

- The other device may be using a profile that is not supported by the Bluetooth Util. Please check the profile being used on the other device.
- The following profiles are compatible with Bluetooth Settings.

DUN, FAX, LAP, SPP, HID, HCRP, FTP, OPP, HSP, PAN and BIP

Devices running profiles other than those above will not be able to be registered with Bluetooth Settings.

Bluetooth Information Exchanger

 An error occurs when you try to send a file using the right -click menu.

- Select and right-click on a file, and then you can choose either the FTP or OPP profile when you click on [Send to Bluetooth Device]. If neither profile is supported by the destination device, the file will not be able to be sent from the right-click menu.

The transmission will also fail if you use FTP to send a file to a device that only supports the OPP profile.

Should this occur, please click on [Bluetooth] [Profiles] under [Bluetooth Information Exchanger] to configure the [Transfer mode](#).

 Cannot open shared folder on remote device using [File Transfer].

- The other device may have a certain security level enforced (Non -connectable mode etc). Please confirm the security settings of the other device. Please enter the correct password if you are asked to enter one.

Remote Camera

- See "[Using a camera](#)"

Bluetooth Local COM

 Cannot add port

- A maximum of 64 virtual COM ports can be added. You will be unable to add another port if 64 ports have already been configured.

Using a wireless modem station

Important

- Please refer to "[What you need to know about using Bluetooth](#)" for an understanding of the basic concepts to be aware of when using Bluetooth.

Modem station cannot be detected

- If the modem station is connected to and is being used by another device, the modem station will be undetectable even if you search for it.

Cannot connect to modem station

- If the modem station is connected to and is being used by another device, no other device will be able to connect to the modem station.

Bluetooth passkey entry failed

- The Bluetooth passkey (PIN code) comprises a sequence of alphanumeric characters with the letters able to be rendered in upper and lower case. If [Caps Lock] is on, the Bluetooth passkey may not be able to be entered correctly.

Cannot connect to telephone line

- Please ensure that the telephone cable is connected from the socket to the "LINE" terminal on the modem station.

Note

- If the telephone cable has come loose because it has not been fully inserted in the socket, the resulting poor contact may prevent data from being transmitted accurately.
- Communication will be impossible if the interior of the cable has been broken. Please replace the cable with another one.
- Please ensure that the two slide switches on the underside of the main unit have been set to the "NORMAL" and "MODEM" positions respectively.

? Cannot connect to the Internet

- The telephone number of the connection (i.e., the telephone number for the access of your Internet service provider) may not be correct. Please check the telephone number.
- The user ID and/or password for the provider with whom you have signed up may have been entered incorrectly. Please check the user ID and password.
- The default connection may have been configured with different settings. Please see connection configured for mobile telephone use as the [default connection](#).
- When you place a call using a company switchboard or other exchange, the system require you to enter a "0" before the telephone number itself. Please check the type telephone line you are using.

? Cannot send or receive faxes

- Once you have registered a wireless modem station as your fax server, you will need enter the fax settings from the [Printer and Faxes] window in the Control Panel. Please refer to "[Using a modem station for fax transmissions](#)" for information on t configuration procedure.
- The telephone number of the fax destination may have been entered incorrectly. Please check the telephone number.
- If the setting under [COM Auto Connect Settings](#) has been set to "Off", a connection not automatically be established with the modem. Please connect to the modem manually.
- When you place a call using a company switchboard or other exchange, the system require you to enter a "0" before the telephone number itself. Please check the type telephone line you are using.
- The fax service may not have been enabled for sending (or receiving). Please check the settings by following the procedure below.

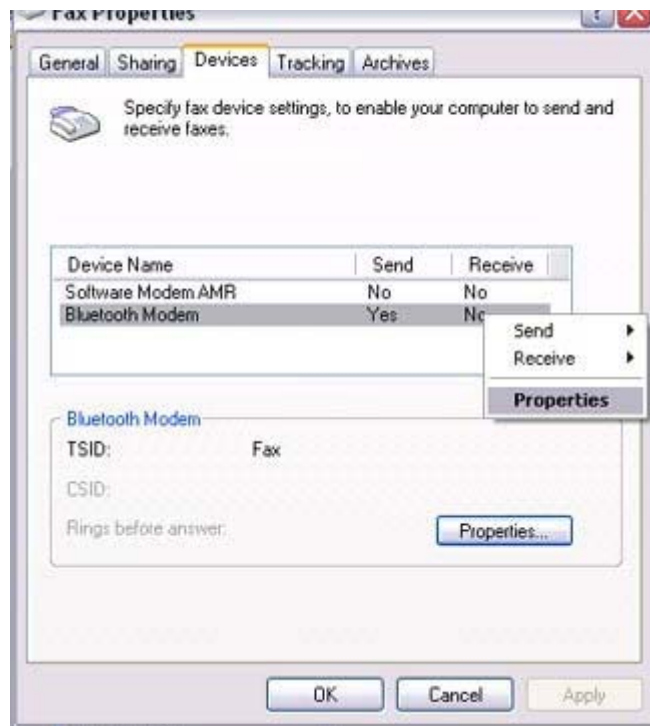
1. Open [Printers and Faxes] from the Control Panel, right -click on the [Fax] and then click on [Properties]



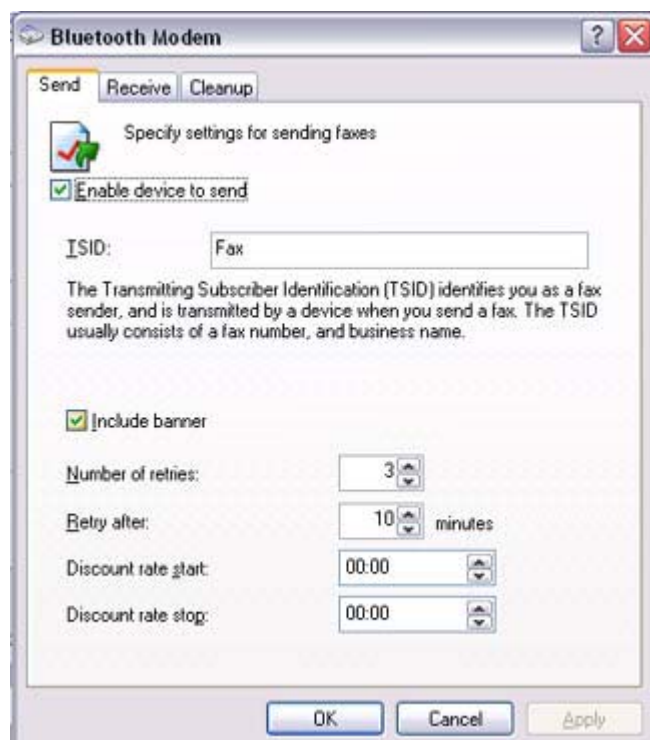
The [Fax properties] window will appear.

2. Select the [Device] tab, right -click on the modem you wish to use, and then on [Properties]



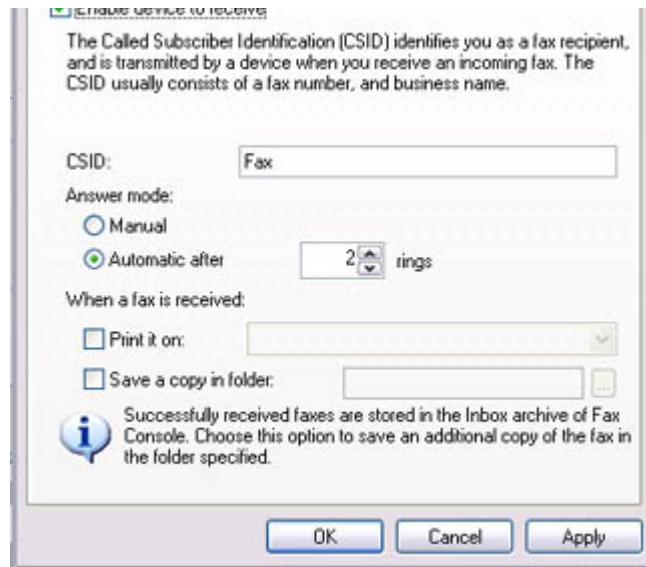


3. Select the [Send] tab, and then confirm that "Enable device to send" has been checked.



4. Select the [Receive] tab, and then confirm that "Enable device to receive" has been checked (when you wish to receive faxes)





5. Click on the [OK] button

Using an access point

Important

- Please refer to "[What you need to know about using Bluetooth](#)" for an understanding of the basic concepts to be aware of when using Bluetooth.

Access point cannot be detected

- If the access point is connected to and is being used by another device, the access point will be undetectable even if you search for it.

Cannot connect to access point

- If the access point is connected to and is being used by another device, no other device will be able to connect to the access point.

Cannot connect to LAN

- The LAN cable may not be properly connected to the access point. Please check the connection status.

Note

- If the LAN cable has come loose because it has not been fully inserted into the socket, the resulting poor contact may prevent data from being transmitted accurately.
- Communication will be impossible if the interior of the LAN cable has been broken. Please replace the cable with another one.

broken. Please replace the cable with another one.

- The access point may not have been configured correctly, and may not be able to maintain the connection to the LAN.
Please refer to the product instruction manual for information on how to configure access point.

Cannot connect to the Internet

- If you are using a LAN to connect to the Internet, the LAN environment of the computer or location where you are trying to establish the connection may require you to connect via a proxy server.
Please click [here](#) for information on configuring a proxy server.



Using a printer

Important

- Please refer to "[What you need to know about using Bluetooth](#)" for an understanding of the basic concepts to be aware of when using Bluetooth.

Printer cannot be detected

- If the printer is connected to and is being used by another device, the printer will be undetectable even if you search for it.

Cannot connect to printer

- If the printer is connected to and is being used by another device, no other device will be able to connect to the printer.

Cannot print/garbled print output

- The printer driver of the printer you are using may not have been installed correctly. Please refer to your product instruction manual and re-install the driver.
- Please check to see if the printer has run out of paper, ink or other consumable item.
- If you are using a printer while several Bluetooth devices are connected to the PC, the printer may not function normally. Please disconnect the other devices and try again.



Using a Bluetooth Headset



Important

- Please refer to "[What you need to know about using Bluetooth](#)" for an understanding of the basic concepts to be aware of when using Bluetooth.



Bluetooth Headset cannot be detected

- If the Bluetooth Headset is connected to and is being used by another device, the Bluetooth Headset will be undetectable even if you search for it.



Cannot connect to Bluetooth Headset

- If the Bluetooth Headset is connected to and is being used by another device, no other device will be able to connect to the Bluetooth Headset.
- A Bluetooth connection will be impossible if the Bluetooth Headset is connected to a power adaptor. Please remove the power adaptor and re-connect.



Sound cuts out/cannot hear anything

- Using a Bluetooth headset with other Bluetooth devices may cause problems such as interruptions in sound, reduced transfer speed or failure during file transfer, and disconnection of the other Bluetooth devices. We strongly recommend using a Bluetooth headset on its own, not in connection with other Bluetooth devices.
- Please confirm that the Bluetooth Headset is being operated correctly (for example ensure that the correct mode (audio or communications) mode has been selected).
- Please confirm that the voice file or CD is being played back normally on your PC.
- Please check the volume settings on your Bluetooth Headset and PC.
- If Windows Media Player or another audio-related application is active when you connect your Bluetooth Headset, you may find it impossible to connect properly to the Bluetooth Headset, or even to use it at all. Please start such applications after you have connected to the Bluetooth Headset.



Using a keyboard or mouse



Important

- Please refer to "[What you need to know about using Bluetooth](#)" for an understanding of the basic concepts to be aware of when using Bluetooth.

the basic concepts to be aware of when using Bluetooth.

? Keyboard or mouse cannot be detected

- If the keyboard or mouse is connected to and is being used by another device, the keyboard or mouse will be undetectable even if you search for it.

? Cannot connect to keyboard or mouse

- If the keyboard or mouse is connected to and is being used by another device, no device will be able to connect to the keyboard or mouse.



Using a camera

Important

- Please refer to "[What you need to know about using Bluetooth](#)" for an understanding of the basic concepts to be aware of when using Bluetooth.

? Camera cannot be detected

- If the camera is connected to and is being used by another device, the camera will be undetectable even if you search for it.

? Cannot connect to camera

- If the camera is connected to and is being used by another device, no other device will be able to connect to the camera.

? Images from the camera can be displayed, but no pictures can be taken

- The memory card in the camera may be full.
Please make a backup of all your necessary data on alternative media, then delete the images from the memory card, and ascertain how much free space remains.

? Camera images do not appear in window

- The camera may not have been set to remote camera mode (image browse mode, configuration mode, etc).

Certain cameras will end the Bluetooth connection automatically if you change the settings in a mode other than remote camera mode. Please re-connect to the camera when you next wish to use the device in remote camera mode.



Using a PDA



Important

- Please refer to "[What you need to know about using Bluetooth](#)" for an understanding of the basic concepts to be aware of when using Bluetooth.



Cannot make an ActiveSync connection

- Please confirm that you have installed ActiveSync v3.7 or higher on your PC.
- ActiveSync is installed to COM7 as a default. Please refer to "[Synchronising information using ActiveSync](#)" and re-configure your ActiveSync connection. If a port other than COM7 has been used, please amend the ActiveSync connection settings accordingly.



Cannot locate a saved file

- The type of file sent to your PDA, as well as the profile used to send the file, may determine where folders saved on your PDA are located.

Examples:

Images transferred to your PDA using "Image transfer" > saved in the "Image transfer" folder

Images transferred to your PDA using "File transfer" > saved in the "Shared folder"



Using a mobile telephone



Important

- Please refer to "[What you need to know about using Bluetooth](#)" for an understanding of the basic concepts to be aware of when using Bluetooth.



Mobile telephone cannot be detected

- If the mobile telephone is connected to and is being used by another device, the mobile telephone may not be detected.

.. the mobile telephone is connected to and is being used by another device, the mobile telephone will be undetectable even if you search for it.

? Cannot connect to mobile telephone

- If the mobile telephone is connected to and is being used by another device, no other device will be able to connect to the mobile telephone.

? Cannot send images to mobile telephone

- Please use the appropriate transfer method, according to the profiles supported by your mobile telephone.

If OPP is supported: right-click on a file to send it

If BIP is supported: use "Image transfer" under Bluetooth Information Exchange to send images

? Cannot connect to the Internet

- The telephone number of the connection (i.e., the telephone number for the access of your Internet service provider) may not be correct. Please check the telephone number.
- The user ID and/or password for the provider with whom you have signed up may have been entered incorrectly. Please check the user ID and password.
- The default connection may have been configured with different settings. Please see the connection configured for mobile telephone use as the [default connection](#).

? Cannot send or receive faxes

- Once you have registered a mobile telephone as your fax server, you will need to check the fax settings from the [Printer and Faxes] window in the Control Panel. Please refer to "[Using a modem station for fax transmissions](#)" for information on the configuration procedure.
- The telephone number of the fax destination may have been entered incorrectly. Please check the telephone number.
- If the setting under [COM Auto Connect Settings](#) has been set to "Off", a connection will not automatically be established with the modem. Please connect to the mobile telephone manually.
- The fax service may not have been enabled for sending (or receiving). Please check the settings by following the procedure below.

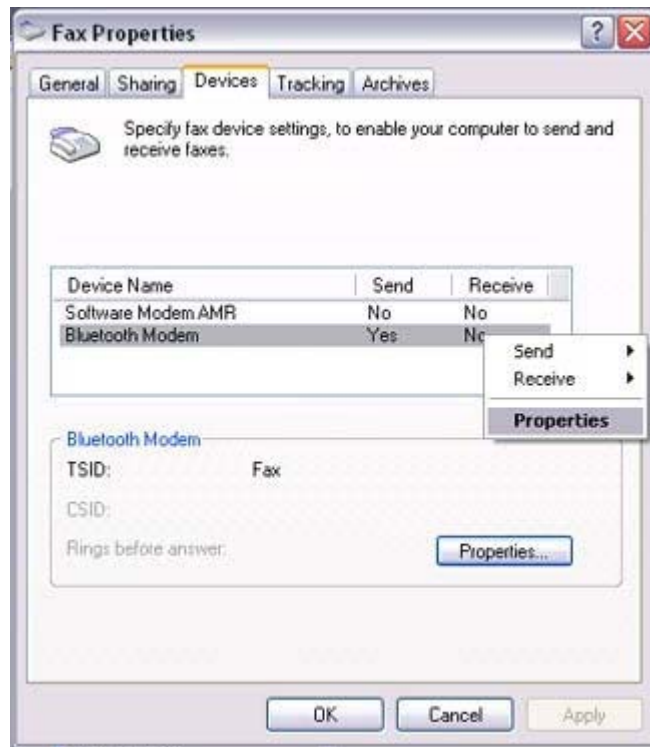
1. Open [Printers and Faxes] from the Control Panel, right-click on the [Fax] and then click on [Properties]



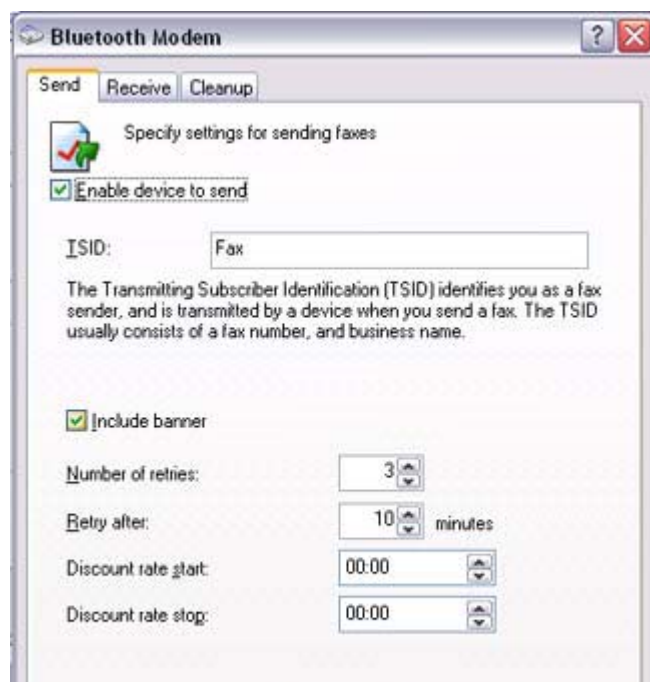


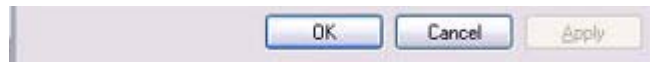
The [Fax properties] window will appear.

2. Select the [Device] tab, right-click on the modem you wish to use, and then on [Properties]

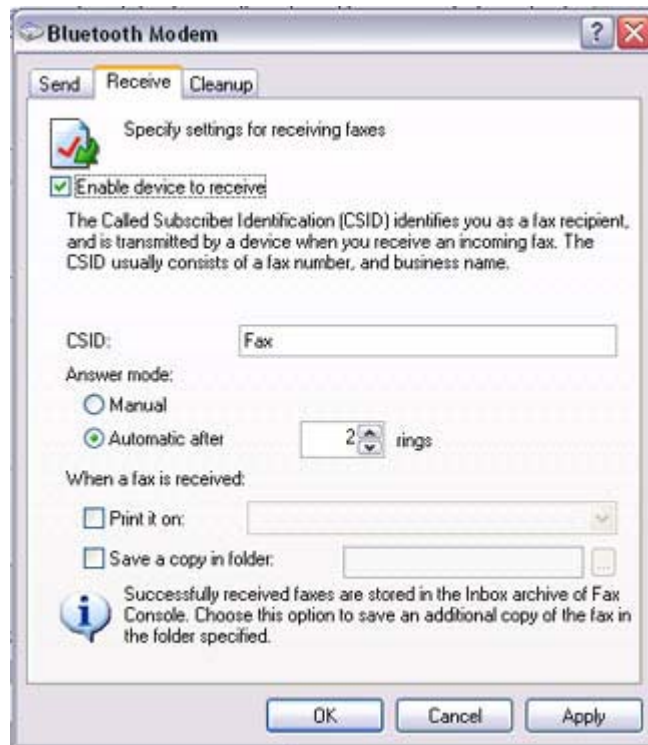


3. Select the [Send] tab, and then confirm that "Enable device to send" has been checked.





4. Select the [Receive] tab, and then confirm that "Enable device to receive" has been checked when you wish to receive faxes)



5. Click on the [OK] button

Glossary

This glossary provides definitions for Bluetooth -related terminology. You will be able to look up the meanings of any uncertain terms here.

A

A2DP Profile

Abbreviation of Advanced Audio Distribution.

A Bluetooth profile allowing you to adjust the sound quality of wireless headsets and of audio devices.

AVRCP Profile

Abbreviation of Audio/Video Remote Control Profile. A Bluetooth profile enabling rem

control functions to be sent and received. Remote control commands can be received by Bluetooth Utility.



Bluetooth Profile

A specification that guarantees the connection to the service function of a remote Bluetooth device.

For a Bluetooth device to send and receive information to and from another device, both devices must support shared profiles designated for each function, such as dial-up networking, faxing, printing and human interface devices.



DHCP

Abbreviation of Dynamic Host Configuration Protocol

DHCP is a function that automatically sets up IP addresses. This function will allow you avoid having to set up IP addresses on each computer.

DUN Profile

A Bluetooth profile for Dial-up Networking.

This profile enables you to establish a dial-up Bluetooth connection with a wireless mobile station, mobile telephone, or similar device.



FAX Profile

A Bluetooth profile that enables you to establish a Bluetooth connection with a wireless modem station, mobile telephone, or similar device to send or receive a fax.

FTP

Abbreviation of File Transfer Profile.

A Bluetooth profile that enables you to browse folders on a wireless device and transfer to and from the local device.



GAVDP Profile

Abbreviation of Generic Audio-Video Distribution Profile. This is a Bluetooth profile.



HCRP

Abbreviation of Hardcopy Cable Replacement Profile. A Bluetooth profile that establish connection to a device only when you print, unlike SPP (Serial Port Profile).

HID Profile

Abbreviation of Human Interface Device Profile.
A Bluetooth profile that enables you to connect to a wireless mouse, keyboard or other i device.



LAP

Abbreviation of LAN Access Profile.
A Bluetooth profile that enables you to establish a Bluetooth connection to a LAN acces point to access a LAN via PPP.



OPP

Abbreviation of Object Push Profile.
A Bluetooth profile that enables you to exchange business cards with a wireless device.



Passkey

Also known as a PIN code

This is a password consisting of up to 16 alphanumeric characters that enables a connection to be established to a wireless device. You need to know the passkey in order to connect to a device that requires authentication.

Even when the authentication setting has been disabled in the User Mode Properties of the Bluetooth Utility, the passkey entry dialog box will appear automatically if authentication is required, enabling you to authenticate a device. A link key will be created once you have authenticated a device, eliminating the need for a passkey to connect to that device in the future.

Pairing

A security function. In order for Bluetooth devices to authenticate each other, a passkey (code) is entered in each terminal when they are connected for the first time, and a secret bit link key is generated. This action is known as "pairing."



SPP

Abbreviation of Serial Port Profile.

A Bluetooth profile that enables communication with a device through a virtual serial port configured for a Bluetooth connection. This can be used for printers and printer adapters, PDAs, using a method different from HCRP or ActiveSync.



TCP/IP

Abbreviation of Transmission Control Protocol/Internet Protocol.

Standard communications protocol (convention for enabling data communication) used on the Internet. Using the same protocol enables computers to exchange data with each other.



vCARD

Common standard for electronic business cards.

Names, (e)mail addresses, telephone numbers and other information are exchanged in the form of electronic business cards (in *.vcf format), allowing all parties to easily register other's data in their address books.

The standard is extensively compatible with Microsoft Outlook, Lotus Organizer and other mail/schedule management software.

FEDERAL COMMUNICATIONS COMMISSION INTERFERENCE STATEMENT

This equipment has been tested and found to comply with the limits for a Class B digital device, pursuant to Part 15 of the FCC Rules. These limits are designed to provide reasonable protection against harmful interference in a residential installation. This equipment generates, uses and can radiate radio frequency energy and, if not installed and used in accordance with the instructions, may cause harmful interference to radio communications. However, there is no guarantee that interference will not occur in a particular installation. If this equipment does cause harmful interference to radio or television reception, which can be determined by turning the equipment off and on, the user is encouraged to try to correct the interference by one or more of the following measures:

- Reorient or relocate the receiving antenna.
- Increase the separation between the equipment and receiver.
- Connect the equipment into an outlet on a circuit different from that to which the receiver is connected.
- Consult the dealer or an experienced radio/TV technician for help.

CAUTION:

Any changes or modifications not expressly approved by the grantee of this device could void the user's authority to operate the equipment.

FCC RF Radiation Exposure Statement

This equipment complies with FCC RF radiation exposure limits set forth for an uncontrolled environment. This equipment should be installed and operated with a minimum distance of 20cm between the radiator and your body.

Introduction

The Quick Start Guide is intended to those who wish to get started right away using Bluetooth, and describes basic concepts to be aware of as well as ways to connect to Bluetooth devices.

The Quick Start Guide comprises the following items.

What you need to know about using Bluetooth

Describes the basic concepts you need to be aware of when using Bluetooth devices. It is recommended that you read this section before starting the set-up process.

Trying out your Bluetooth device

Describes the procedures used for actually configuring and then using your Bluetooth device. Please read this according to your desired purpose and device.

Troubleshooting

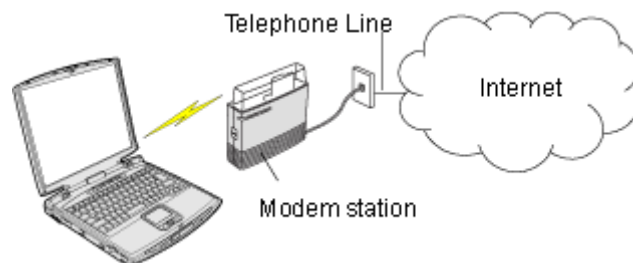
Describes possible causes and countermeasures to be considered when your Bluetooth device cannot be configured properly, functions abnormally or presents other problems related to its operation.

Glossary

Explains the technical jargon used in this guide.

Connecting to the Internet using a modem station [DUN]

You can use a Bluetooth wireless modem to connect to the Internet via a telephone line.



[Setting up the modem station](#)
[Connecting to the Internet](#)

★ Important

- In order to connect to the Internet, you must have already signed up with a provider and obtained a connection ID and password. Please ensure you have confirmed the ID, password and telephone number of your provider's access point before you begin the set-up process

- and telephone number of your provider's access point before you begin the set up process.
- Please refer to your instruction manual for information on connecting the modem station to a telephone line.
- A Bluetooth passkey (PIN code) is required for you to connect to the modem station. Please make a note of your Bluetooth passkey before you start the set-up process.

Setting up the modem station

Procedure

1. Turn on the wireless modem station
2. Right-click the Bluetooth icon in the task tray, and then click on [Add New Connection]



Note

- Alternatively, click [Start] [All Programs] [Bluetooth] [Bluetooth Settings], and then click on [New Connection] from the active [Bluetooth Settings] window.

The [Add New Connection Wizard (Welcome to the Add New Connection Wizard)] window will appear.

3. Confirm that [Express Mode] has been selected, and then click on the [Next] button



The [Add New Connection Wizard (Searching for Bluetooth devices)] window will appear.



4. Select the device name of the wireless modem station from [Device List], and then click on the [Next] button



The [Add New Connection Wizard (Searching for Services)] window will appear.





Once a service has been detected successfully, connection to the device and COM port creation will be performed automatically, after which the [Add New Connection Wizard (Modem Settings)] window will appear.

5. If you are connecting to a wireless modem station for the first time, enter the passkey for the modem station under [Bluetooth Passkey (PIN code)], and then click on the [OK] button



Once the program has finished searching for the devices, the [Add New Connection Wizard (Device Selection)] window will appear.

6. Click on the [Next] button



Certain modems require you to configure initialization commands separately. Please click on the [Additional initialization Command Settings] button, enter the initialization commands in the following window, and then click on the [OK] button.





Note

- Please refer to the modem or mobile phone instruction manual for further details on the initialization commands.

7. Enter the connection name (optional), telephone number (of your provider's access point), user name and password (as issued by your provider), and then click on the [Finish] button.



Important

- The sample entries shown in the window are provided solely for purpose of explanation. Please use your own telephone number, ID and password according to the arrangement with your provider.

The settings will be registered, and an icon will appear in the [Bluetooth Settings] window.



Connecting to the Internet

You can connect to the Internet by following the procedure below if the connection destination registered when you configured the wireless modem has been set as the [default connection destination](#).

1. Start your browser, e-mail application or other application

★ Important

- Please enter the e-mail settings separately if you are going to use e-mail (the set-up method will vary with the application).

2. Enter the URL of the Web page you wish to display and then press the [Enter] key, or use the e-mail tool to send/receive items or perform other activities.

The [Dial-up Connection] window will appear.

3. Click on the [Connect] button




★ Important

- A connection will be automatically established with the modem station if [COM Auto Connect](#) is available. If COM Auto Connect is not available, please [manually](#) connect to the modem station.

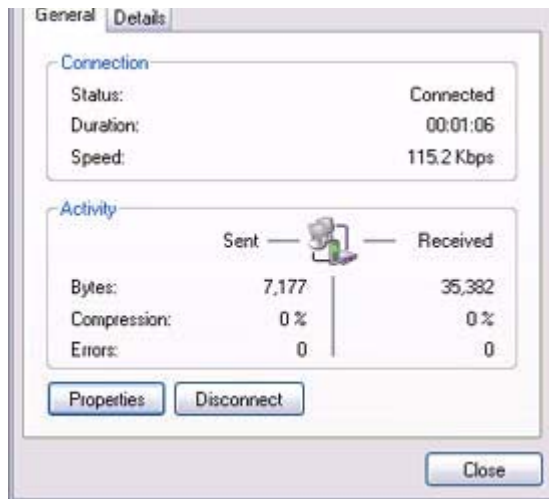
The following message will appear once you have connected to the Internet.




4. End the connection

The window below will appear if you double-click on the  icon in the task bar.



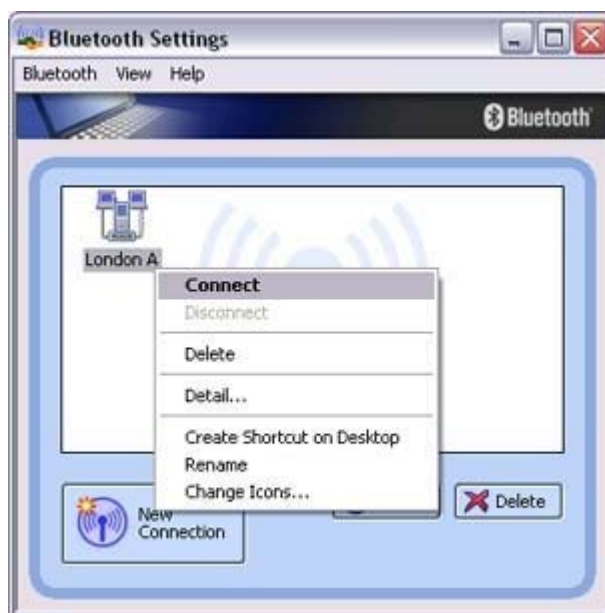


Please click on the [Disconnect] button when you want to disconnect from the Internet. Alternatively, please right-click on the  icon, and then click on [Disconnect].



Note

- You can start an application to make an automatic connection to the Internet, but you can also make a manual connection using the connection destination icon. The procedure is described below.
- From the [Bluetooth Settings] window, right-click on the connection destination icon, and then click on [Connect] from the menu that appears



A window indicating that the connection is being established will appear.





If the connection has been established successfully, the connection icon and task tray will appear as shown below.



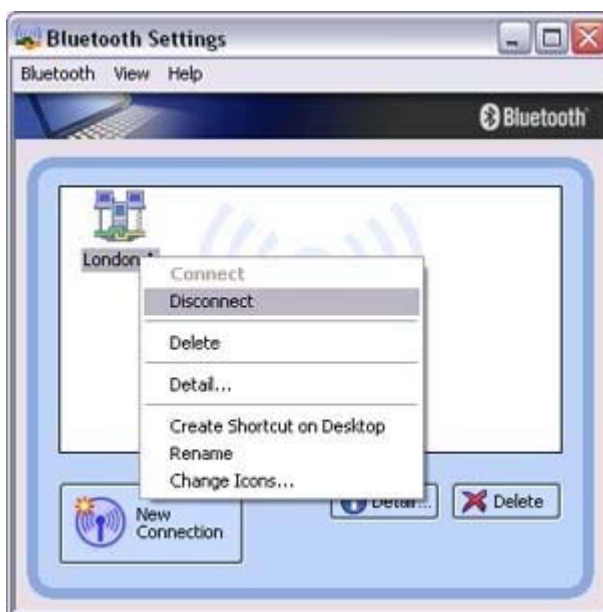
You will be able to browse Web pages using your browser and send and receive e-mail.

★ Important

- Please enter the e-mail settings separately if you are going to use e-mail (the set-up method will vary with the application).

2. End the connection

Right-click on the icon, and then click [Disconnect] to end the connection.



The following message will appear. Click on the [Yes] button.



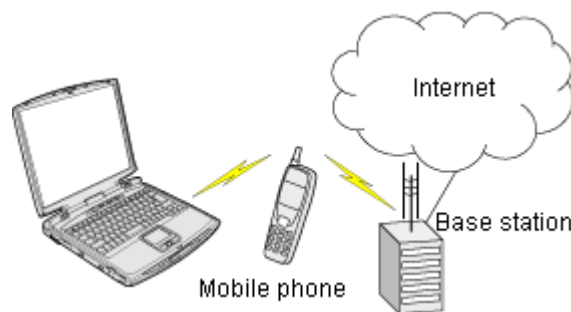


When the icon appears as shown below, the connection will have ended.



Connecting to the Internet using a mobile telephone [DUN]

This section describes how to connect to the Internet via a telephone line, using a mobile telephone.



[Configuring a mobile telephone for use as a modem](#)
[Connecting to the Internet](#)

★ Important

- In order to connect to the Internet, you must have already signed up with a provider and obtained a connection ID and password. Please ensure you have confirmed the ID, password and telephone number of your provider's access point before you begin the set-up process.
- A Bluetooth passkey (PIN code) is required for you to connect to the mobile telephone. Please make a note of your Bluetooth passkey before you start the set-up process.

Configuring a mobile telephone for use as a modem

Procedure

1. Turn on the mobile telephone, and set it to be connectable via Bluetooth

Note

- Please refer to the mobile telephone instruction manual for information on how to operate the device.

2. Right-click on the Bluetooth icon in the task tray, and then click on [Add New Connection]



 **Note**

- Alternatively, click [Start] [All Programs] [Bluetooth] [Bluetooth Settings], and then click on [New Connection] from the active [Bluetooth Settings] window.

The [Add New Connection Wizard (Welcome to the Add New Connection Wizard)] window will appear.

3. Confirm that [Express Mode] has been selected, and then click on the [Next] button



The [Add New Connection Wizard (Searching for Bluetooth devices)] window will appear.





4. Select the device name of the mobile telephone from [Device List], and then click on the [Next] button



The [Add New Connection Wizard (Searching for Services)] window will appear.



Once a service has been detected successfully, connection to the device and COM port creation will be performed automatically, after which the [Add New Connection Wizard (Modem Settings)] window will appear.

5. If you are connecting to a mobile telephone for the first time, enter the passkey for the wireless modem station under [Bluetooth Passkey (PIN code)], and then click on the [OK] button



Once the program has finished searching for the devices, the [Add New Connection Wizard (Device Selection)] window will appear.

6. Click on the [Next] button



Certain modems require you to configure initialization commands separately. Please click on the [Additional Initialization Command Settings] button, enter the initialization commands in the following window, and then click on the [OK] button.





Note

- Please refer to the modem or mobile phone instruction manual for further details on the initialization commands.

7. Enter the connection name (optional), telephone number (of your provider's access point), user name and password (as issued by your provider), and then click on the [Finish] button.



Important

- The sample entries shown in the window are provided solely for purpose of explanation. Please use your own telephone number, ID and password according to the arrangement with your provider.

The settings will be registered, and an icon will appear in the [Bluetooth Settings] window.



Connecting to the Internet

You can connect to the Internet by following the procedure below if the connection destination registered when you configured the mobile telephone has been set as the [default connection destination](#).

1. Start your browser, e-mail application or other application.

1. Start your browser, e-mail application or other application

 **Important**

- Please enter the e-mail settings separately if you are going to use e-mail (the set-up method will vary with the application).

2. Enter the URL of the Web page you wish to display and then press the [Enter] key, or use the e-mail tool to send/receive items or perform other activities.

The [Dial-up Connection] window will appear.

3. Click on the [Connect] button




 **Important**

- A connection will be automatically established with the mobile telephone if [COM Auto Connect](#) is available. If COM Auto Connect is not available, please [manually](#) connect to the mobile telephone.

The following message will appear once you have connected to the Internet.




4. End the connection

The window below will appear if you double-click on the  icon in the task bar.



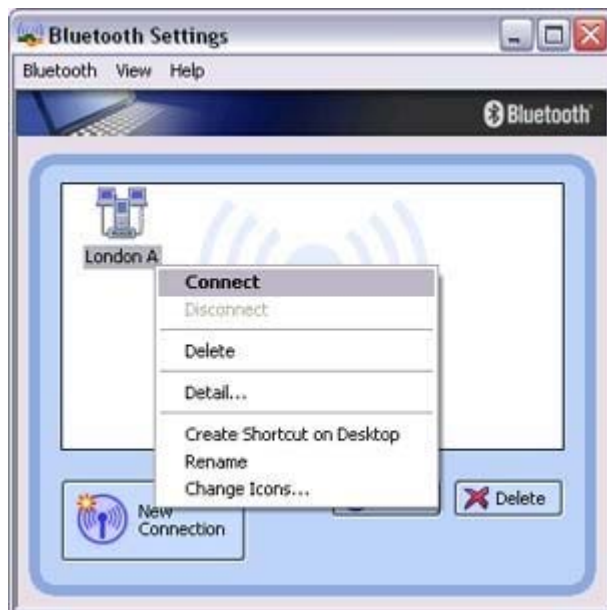


Please click on the [Disconnect] button when you want to disconnect from the Internet.
Alternatively, please right-click on the  icon, and then click on [Disconnect].



Note

- You can start an application to make an automatic connection to the Internet, but you can also make a manual connection using the connection destination icon. The procedure is described below.
- From the [Bluetooth Settings] window, right-click on the connection destination icon, and then click on [Connect] from the menu that appears



A window indicating that the connection is being established will appear.





If the connection has been established successfully, the connection icon and task tray will appear as shown below.



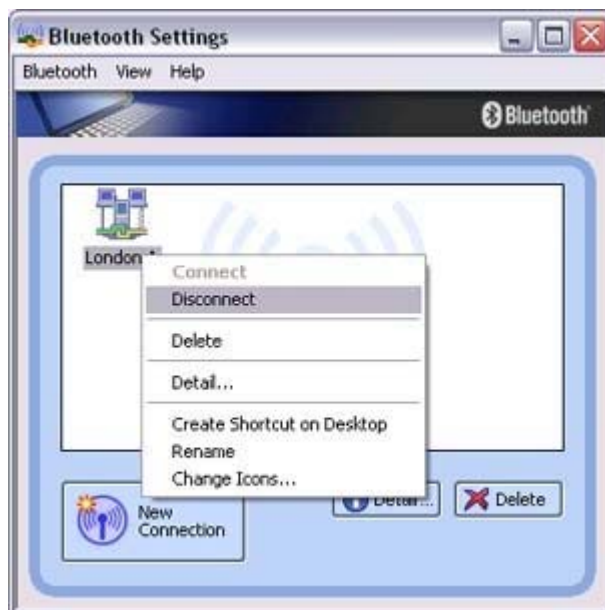
You will be able to browse Web pages using your browser and send and receive e-mail.

★ Important

- Please enter the e-mail settings separately if you are going to use e-mail (the set-up method will vary with the application).

2. End the connection

Right-click on the icon, and then click [Disconnect] to end a connection.



The following message will appear. Click on the [Yes] button.



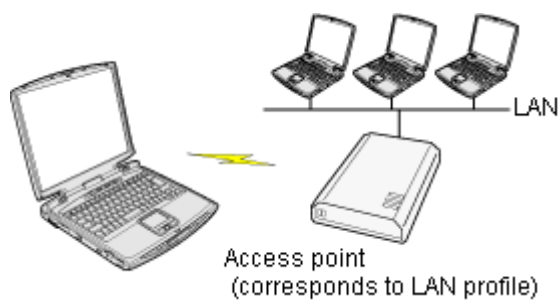
When the icon appears as shown below, the connection will have been ended.





Connecting to a LAN using an access point (LAP) [LAP]

This section describes how to connect to a network (for example, a company LAN or a personal home network) using a LAP profile-compatible access point. Please refer to "[Using an access point \(PAN\) to connect to a LAN](#)" if you are using a PAN profile-compatible access point.



[Setting up the access point](#)
[Connecting to a LAN \(LAP\)](#)

★ Important

- The access point must have been started and a normal connection already established to the network before the access point is set up. Please refer to the access point instruction manual for information on how to set up the access point.
- A Bluetooth passkey (PIN code) is required for you to connect to the access point. Please make a note of your Bluetooth passkey before you start the set-up process.

Setting up the access point

Procedure

1. Turn on the access point, and confirm that a connection has been established with the network
2. Right-click the Bluetooth icon in the task tray, and then click on [Add New Connection]





 **Note**

- Alternatively, click [Start] [All Programs] [Bluetooth] [Bluetooth Settings], and then click on [New Connection] from the active [Bluetooth Settings] window.

The [Add New Connection Wizard (Welcome to the Add New Connection Wizard)] window will appear.

3. Confirm that [Express Mode] has been selected, and then click on the [Next] button



The [Add New Connection Wizard (Searching for Bluetooth devices)] window will appear.



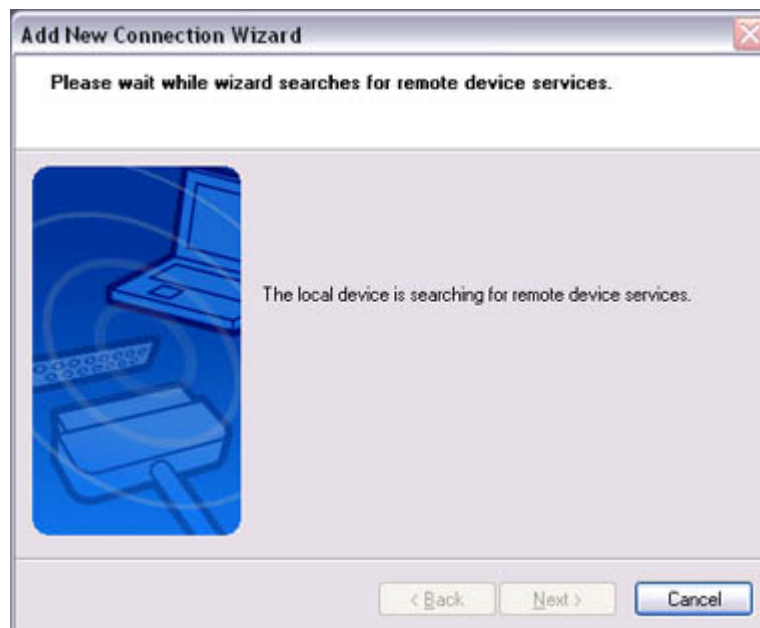
Once the program has finished searching for the devices, the [Add New

Once the program has finished searching for the devices, the [Add New Connection Wizard (Device Selection)] window will appear.

4. Select the device name of the access point from [Device List], and then click on the [Next] button



The [Add New Connection Wizard (Searching for Services)] window will appear.



You will be asked for the Bluetooth passkey in the window that appears.

5. Enter the passkey under [Bluetooth Passkey (PIN code)], and then click on the [OK] button





Service detection and COM port creation will be performed automatically.
The [Add New Connection Wizard (Create Connection Destination)] window will appear.

6. Enter the connection name, user name and password, then click on the [Next] button



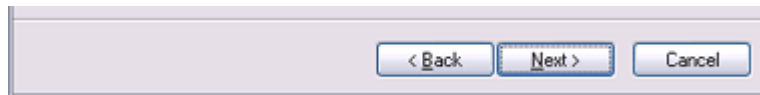
 **Note**

- The user name and password are entered here to allow you to connect to the access point.

The [Add New Connection Wizard (Confirm Dial-up Settings)] window will appear.

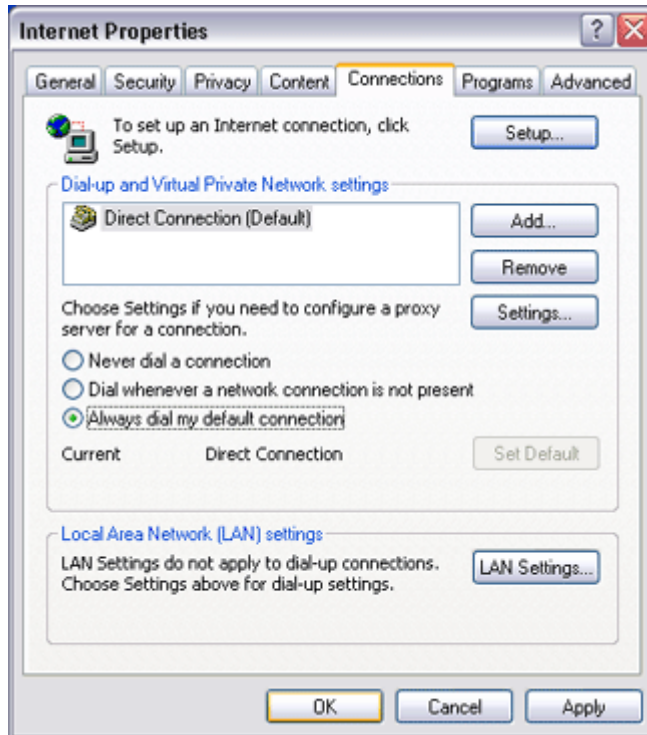
7. Click on the [Confirm Settings] button





The [Internet Options] window will appear.

8. **Configure the connection method, and then click on the [OK] button**
Set the connection destination used for the LAN connection set up in (6) above as the [default connection destination](#), and then select "Always dial my default connection."



9. **Click on the [Next] button**



The [Add New Connection Wizard (Connection Name Settings)] window will appear.

10. **Enter the type and name of the icon displayed after registration, and then click on the**

[Next] button

Please click on the [Next] button if you are satisfied with the settings.



The [Add New Connection Wizard (Completing the Add New Connection Wizard)] window will appear.

11. Click on the [Finish] button

The access point icon will be registered in the [Bluetooth Settings] window.



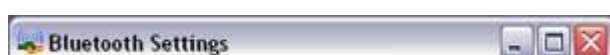
This will complete the access point set-up process.

"Connecting to a LAN (LAP) "

Connecting to a LAN (LAP)

Procedure

1. Right-click on the connection icon in the [Bluetooth Settings] window, and then click on [Connect]





The [Dial-up Connection] window will appear.

2. Confirm that "Direct connection" has been selected under [Connection Destination], and then click on the [Connect] button



A connection will be initiated.

Note

- This is an example of what happens when you use "Direct connection" as a connection name under "Connect to access point." If a name different from the connection name is used, that name will appear under [Connection Destination].
- Please simply click on [Settings] if no user name or password have been entered (i.e., if those fields have been left blank)
- Please change the connection destination if a different connection name (for a dial-up connection) appears in [Connection Destination].



Related topic ["Changing the default connection destination"](#)

Once you connect to the network, Internet Explorer will start automatically, and you will be able to exchange data with other computers on the network.



- Please follow the procedure below if you need to set up a proxy server to connect to the Internet (the following procedure is not necessary if the PC you are going to use has already been set up as a proxy server).

1 Select [Internet Options...] from the [Tools] menu in Internet Explorer

The [Internet Options] window will appear.

2 Click on the [Connections] tab, and then click on the [Settings...] button




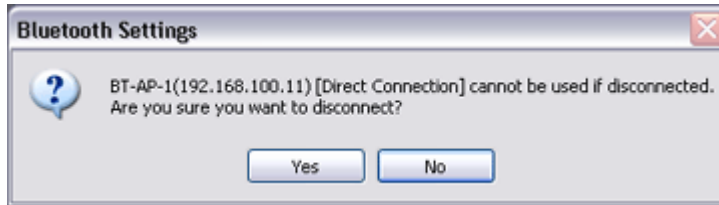
3 Enter the IP address and port number of the proxy server under [Proxy Server], and then click on the [OK] button





3. End the connection

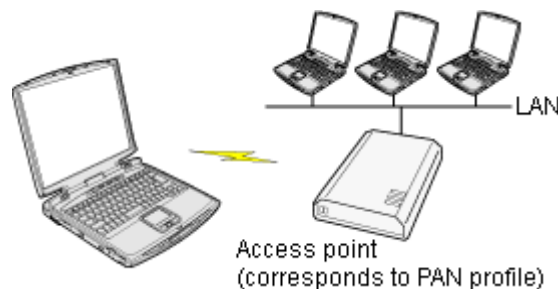
Right-click either on the connection icon under the [Bluetooth Settings] window or on the  icon in the task tray, and then click on [Disconnect].



Click on the "Yes" button in the disconnection confirmation dialog box that appears.

Connecting to a LAN using an access point (PAN) [\[PAN\]](#)

This section describes how to connect to a network (for example, a company LAN or a personal home network) using a PAN profile-compatible access point. Please refer to "[Using an access point \(LAP\) to connect to a LAN](#)" if you are using a LAP profile-compatible access point.



[Setting up the access point](#)
[Connecting to a LAN \(PAN\)](#)

Important

- The access point must be started and a normal connection already established to the network before the access point is set up. Please refer to the access point instruction manual for information on how to set up the access point.
- A Bluetooth passkey (PIN code) is required for you to connect to the access point. Please make a note of your Bluetooth passkey before you start the set-up process.

Setting up the access point



Procedure

1. Turn on the access point, and confirm that a connection has been established with the network
2. Right-click the Bluetooth icon in the task tray, and then click on [Add New Connection]



 **Note**

- Alternatively, click [Start] [All Programs] [Bluetooth] [Bluetooth Settings], and then click on [New Connection] from the active [Bluetooth Settings] window.

The [Add New Connection Wizard (Welcome to the Add New Connection Wizard)] window will appear.

3. Confirm that [Express Mode] has been selected, and then click on the [Next] button



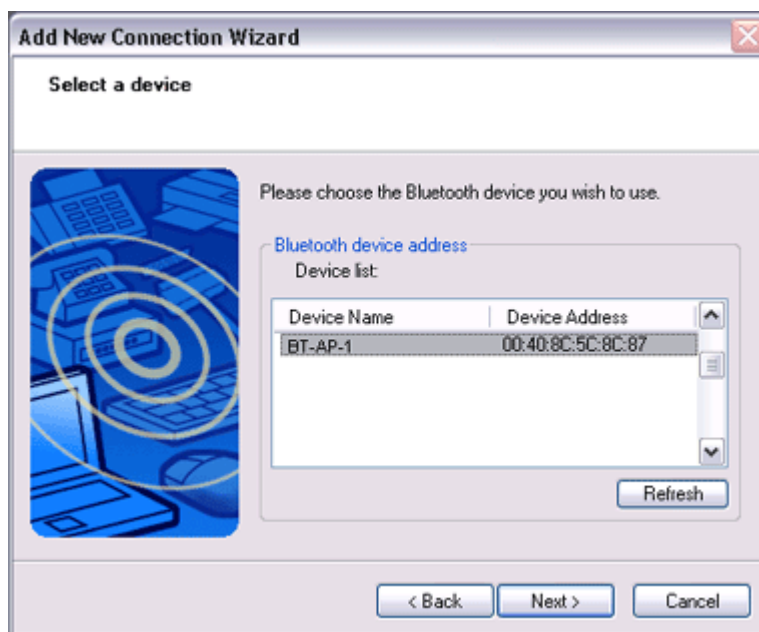
The [Add New Connection Wizard (Searching for Bluetooth devices)] window will appear.





Once the program has finished searching for the devices, the [Add New Connection Wizard (Device Selection)] window will appear.

4. Select the device name of the access point from [Device List], and then click on the [Next] button



The [Add New Connection Wizard (Searching for Services)] window will appear.





You will be asked for the Bluetooth passkey in the window that appears.

5. Enter the passkey under [Bluetooth Passkey (PIN code)], and then click on the [OK] button



Service detection and COM port creation will be performed automatically. The [Add New Connection Wizard (Connection Name Settings)] window will appear.

6. Enter the type and name of the icon displayed after registration, and then click on the [Next] button

Please click on the [Next] button if you are satisfied with the settings.



The [Add New Connection Wizard (Completing the Add New Connection Wizard)] window will appear.

7. Click on the [Finish] button

The access point icon will be registered in the [Bluetooth Settings] window.



This will complete the access point set-up process.

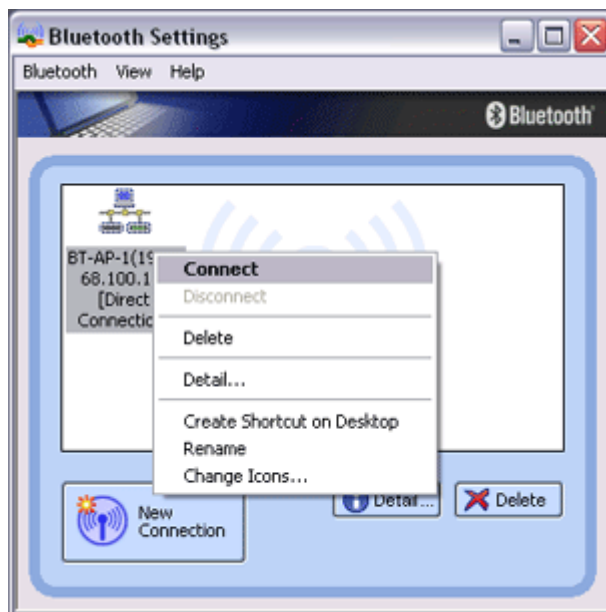
"Connecting to a LAN (PAN)"



Connecting to a LAN (PAN)

Procedure

1. Right-click on the connection icon in the [Bluetooth Settings] window, and then click on [Connect]



You will be asked for the Bluetooth passkey in the window that appears.

2. Enter the passkey under [Bluetooth Passkey (PIN code)], and then click on the [OK] button



A connection will be initiated.

A connection will be initiated.

Once you have connected to the network, Internet Explorer will start automatically, and you will be able to exchange data with other computers on the network.

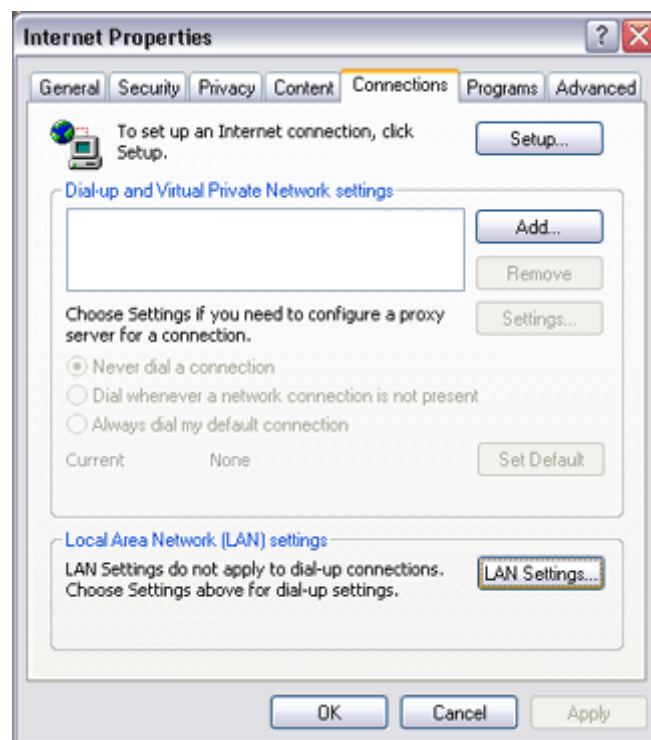
 **Note**

- Please follow the procedure below if you need to set up a proxy server to connect to the Internet (the following procedure is not necessary if the PC you are going to use has already been set up as a proxy server).

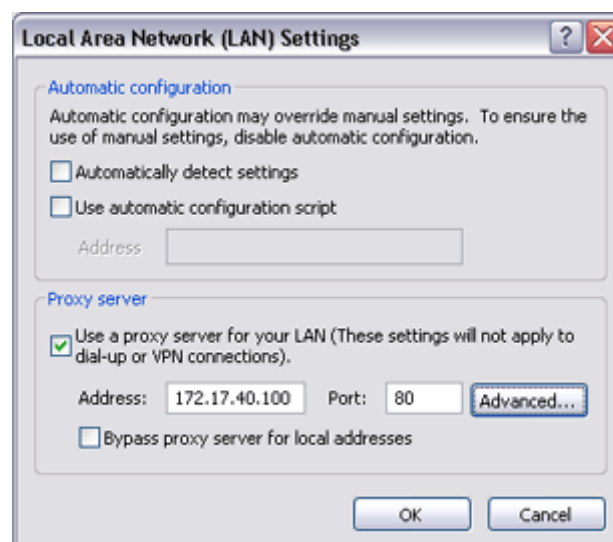
1 Select [Internet Options...] from the [Tools] menu in Internet Explorer

The [Internet Options] window will appear.


2 Click on the [Connections] tab, and then click on the [LAN Settings...] button

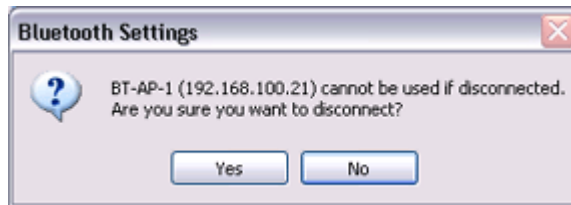


3 Enter the IP address and port number of the proxy server under [Proxy Server], and then click on the [OK] button



3. End the connection

Right-click either on the connection icon under the [Bluetooth Settings] window or on the  icon in the task tray, and then click on [Disconnect].



Click on the "Yes" button in the disconnection confirmation dialog box that appears.

Building a personal area network [PAN]

You can use the PAN profile to build a network of Bluetooth -enabled devices.

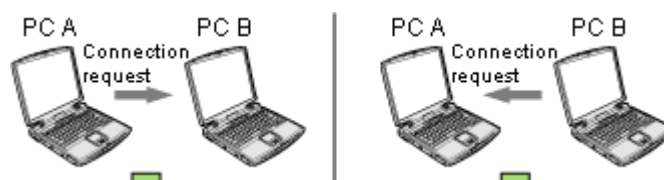


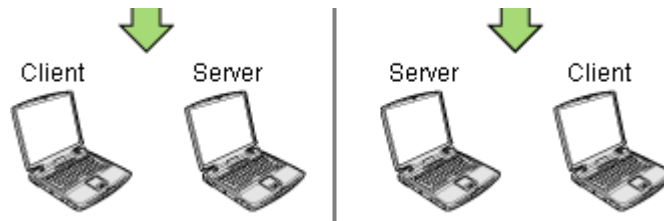
[Operating as a server](#)

[Operating as a client](#)

A personal area network comprises a client -server architecture. The device to which other devices connect is called the "server", and a device that connects to the server is called a "client."

The client-server relationship is not necessarily a fixed one. The first of two devices to establish a connection can be the server when one other device is present, and can be the client in other instances.

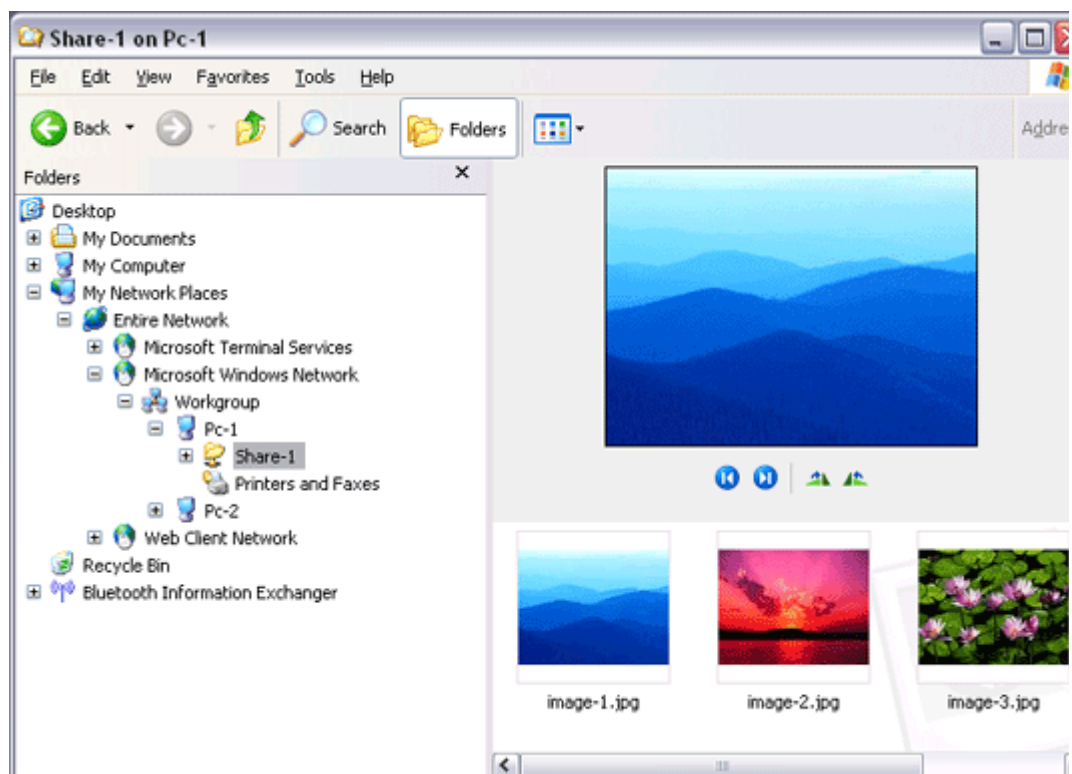
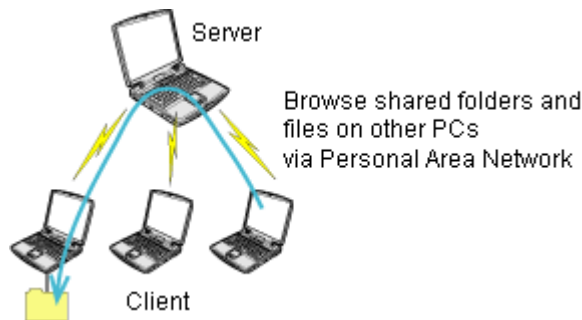




 **Note**

- The maximum total number of devices that can be used to constitute a single personal area network is seven: one server and six clients.
A network comprising as many as seven devices could theoretically be built, but an operating environment that involves the use of other Bluetooth devices, leaving aside other complications, might require the network to comprise fewer components..

By using the PAN profile, you will be able to build a network that uses the same TCP/IP protocol used in regular LANs. Accordingly, the machine designated as the server can be used for configuration tasks that utilize DHCP, such as assigning IP addresses to clients. In addition, you will be able to configure folder and file sharing, which will allow data to be browsed by other servers or clients on the network.



 **Important**

 Important

- Please refer to Windows Help for further information on TCP/IP, DHCP and configurations for sharing.

 Operating as a server

The following icon will appear in the tasktray when the PAN server function has been activated.



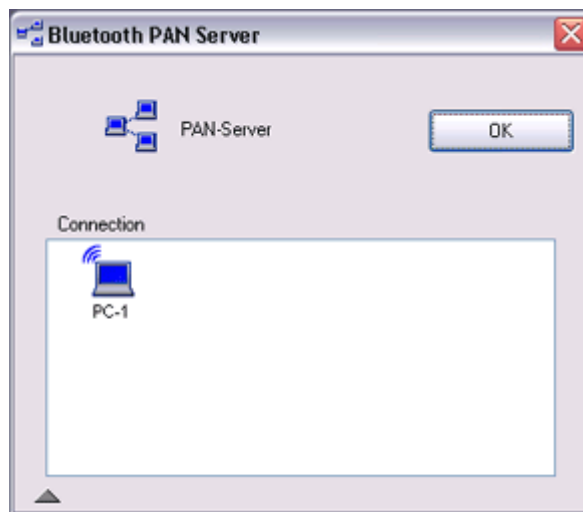
Should the icon not appear, please follow the procedure below to activate the PAN server function.

1. Right-click the Bluetooth icon in the task tray and make sure the Option [Use PAN Group Ad-hoc Network] is enabled.
A message will appear asking you to confirm whether you wish to activate the PAN group ad-hoc network.
2. Click the [Yes] button
The PAN server will be activated, and an icon will accordingly appear in the tasktray. Other devices that use the PAN profile will now be able to connect over the network.

 Important

- When using the device as the server, make sure that all user accounts have a password set for the security reasons.

By clicking on the icon, the [Bluetooth PAN Server] window will appear. In the graphic below, one client has established a connection.

 Note

- When you try to connect to another server as a client, the task tray icon will disappear, and your machine will not be able to function as a server in response to connection requests originating from other devices.

 Operating as a client

Connecting to a server as a client is performed from the [Bluetooth Settings] window, as described below.

 Procedure

1. Right-click on the Bluetooth icon in the task tray, and click on [Add New Connection]



 **Note**

- Alternatively, click on [Start] [All Programs] [Bluetooth] [Bluetooth Settings], and then on [New Connection] from the [Bluetooth Settings] window.
2. Confirm that [Express Mode] has been selected, and then click on the [Next] button



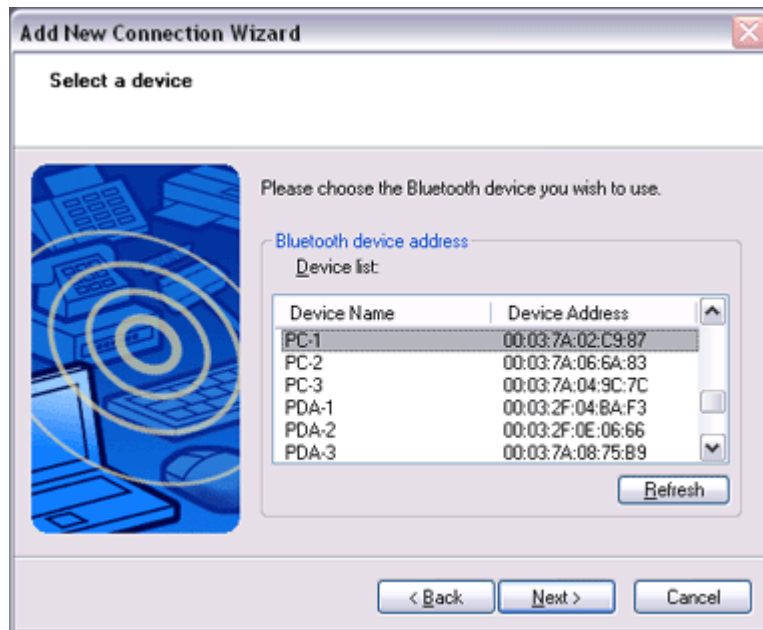
3. Click on the [Next] button in the advisory dialog box
The [Add New Connection Wizard (Searching for Bluetooth devices)] window will appear.



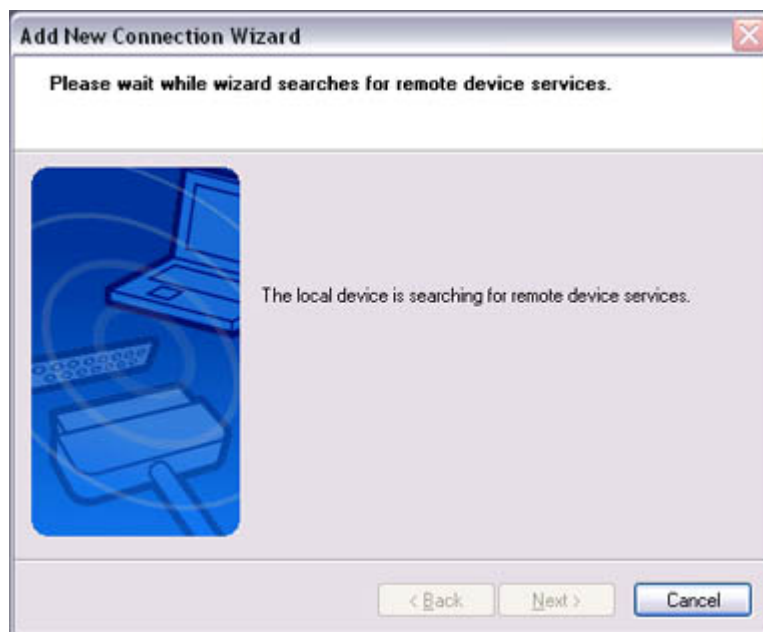


Once the program has finished searching for the devices, the [Add New Connection Wizard (Device Selection)] window will appear.

4. Select the name of the device designated as the server from [Device List], and then click on the [Next] button



The [Add New Connection Wizard (Searching for Services)] window will appear.



The [Add New Connection Wizard (Confirm Connection Name)] window will appear.

5. Click on the [Next] button



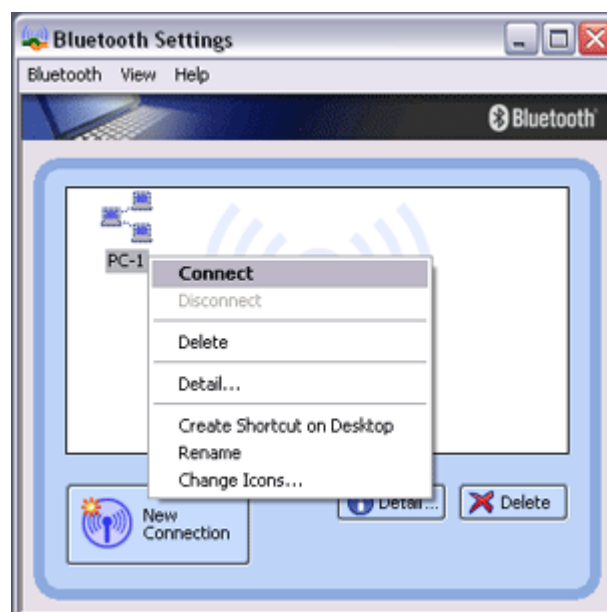
The registered icon will appear in the [Bluetooth Settings] window.



Connecting to a server

Procedure

1. Right-click on the icon in the [Bluetooth Settings] window, and then click on [Connect]



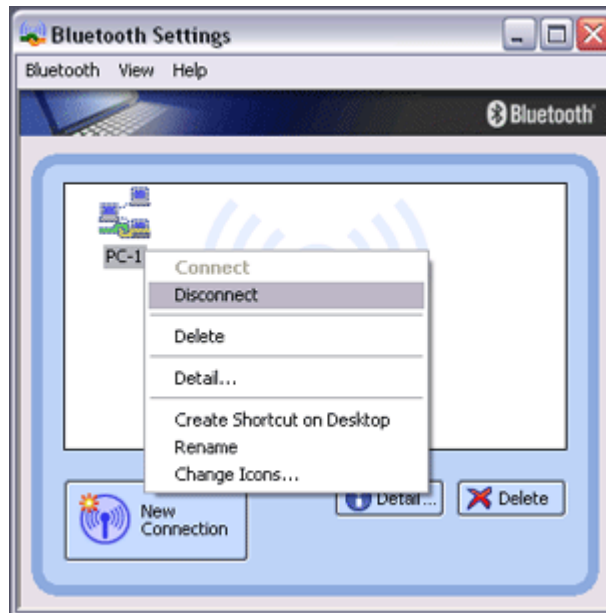
Once you have connected, the icon will change to indicate that the device is connected.



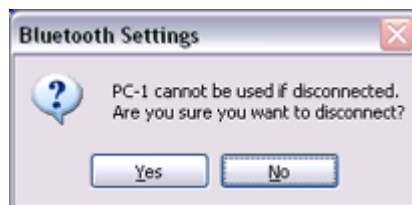
Ending a connection to a server

Procedure

1. Right-click on the icon in the [Bluetooth Settings] window, and then click on [Disconnect]



A message confirming whether you wish to disconnect will appear. Click on the [Yes] button.

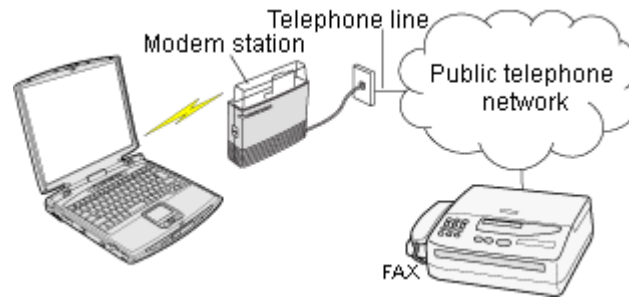


Once you have disconnected, the icon will change to indicate that the device is not connected.



Using a modem station for fax transmissions [FAX]

This section describes how to send a fax using a Bluetooth wireless modem station.



Setting up the modem station

Installing a modem

Setting fax information

Sending a fax

Receiving a fax

★ Important

- Please refer to the modem station instruction manual for information on how to connect the station to a telephone line.
- Please ensure that any drivers used to connect the PC to the modem have been installed.
- A Bluetooth passkey (PIN code) is required for you to connect to the modem station. Please make a note of your Bluetooth passkey before you start the set-up process.
- A fax application is required for you to be able to send and receive faxes. The description below is based on an example using Microsoft Fax, which is installed with Windows XP as standard.

If you are going to use a commercially available fax application, then please refer to the manual that came with the application for information on how to send and receive faxes.

● Setting up the modem station

Set up and register the modem station as a fax service.

Procedure

1. Turn on the wireless modem station
2. Right-click on the Bluetooth icon in the task tray, and then click on [Add New Connection]



 **Note**

- Alternatively, click [Start] [All Programs] [Bluetooth] [Bluetooth Settings], and then click on [New Connection] from the active [Bluetooth Settings] window.

The [Add New Connection Wizard (Welcome to the Add New Connection Wizard)] window will appear.

3. Select [Custom Mode], and then click on the [Next] button



The [Add New Connection Wizard (Searching for Bluetooth devices)] window will appear.



Once the program has finished searching for the devices, the [Add New Connection Wizard (Select Device)] window will appear.

4. Select the device name of the wireless modem station from [Device List], and then click on the [Next] button



The [Add New Connection Wizard (Searching for Services)] window will appear.



5. If you are connecting to the wireless modem station for the first time, enter the passkey for the device from the [Bluetooth Passkey (PIN Code)] window, and then click on the [OK] button



Once the program has finished searching for the services the [Add New Connection

... the program has finished searching for the services, the [Add New Connection Wizard (Select Service)] window will appear.

6. Select "Fax" under [Select Service], and then click on the [Next] button



The [Add New Connection Wizard (Connecting to Remote Device)] screen will appear.

The COM port and modem registration process will then be automatically performed.



Once the COM port and modem (standard 33600 bps type) registration is complete, the [Add New Connection Wizard (Setting Connection Name)] screen will appear.

7. Configure the type and name of the icon to appear after registration, and click on the [Next] button.

Please click only on the [Next] button once you are satisfied with the configuration.





The [Add New Connection Wizard (Completing the Add New Connection Wizard)] screen will appear.

8. Click on the [Finish] button

The settings will be registered, and the icon will appear on the [Bluetooth Settings] screen.



Setting FAX information

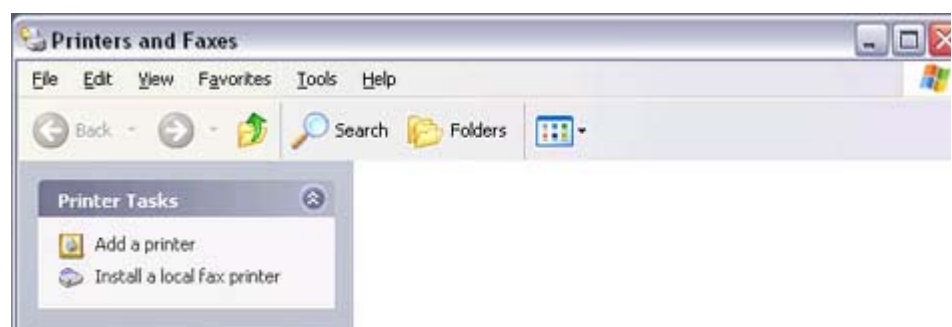
Configure send/receive settings and register fax information.

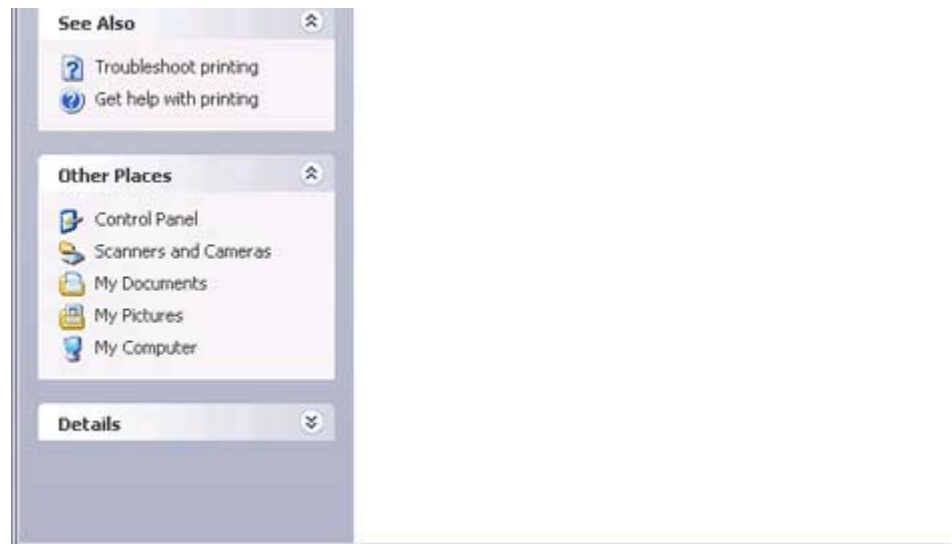
Procedure

1. Select [Start] [Control Panel], and then double-click on the [Printers and Other Hardware] icon

Note

- If the control panel is displayed in "Classic view", and you use Windows 2000, please start from Step (2).
2. Double-click on the [Printers and Faxes] icon
The [Printers & Faxes] window will appear.
 3. Click on "Install a local fax printer" in the [Printers and Faxes] window

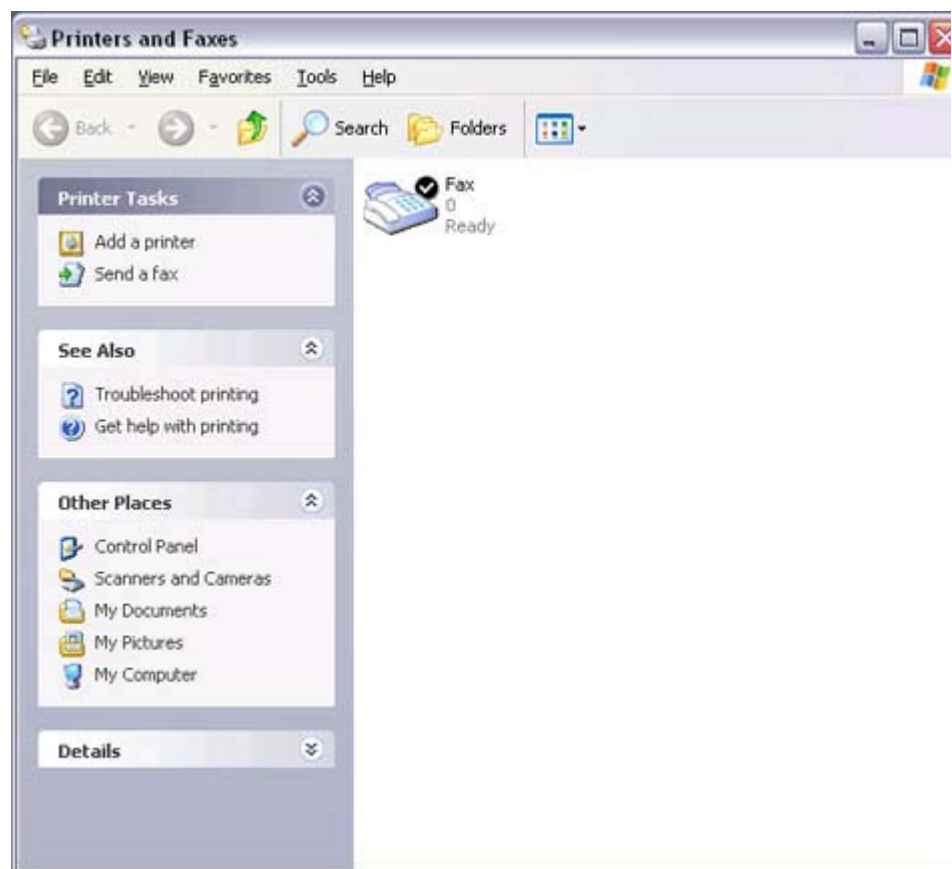




A window showing installed programs will appear, and a Fax icon will have been created in the [Printers and Faxes] screen.



4. Click on "Send a fax" under "Printer Tasks" on the left side of the window



If you have not yet configured a fax device, the [Fax Configuration Wizard] window will appear. In the window you can enter settings pertaining to the sender (yourself).



- If the fax configuration information has already been registered, the [Send Fax Wizard] window, which can be viewed under " [Sending a fax](#)" below, will appear instead of the [Fax Configuration Wizard] window.

5. Enter the sender information, and click on the [Next] button



The screenshot shows the 'Fax Configuration Wizard' window with the 'Sender Information' tab selected. The window title is 'Fax Configuration Wizard'. Below the title bar, there is a sub-header 'Sender Information' and a description: 'Enter sender information that will appear on fax cover pages.' To the right of this text is a small icon of a fax machine. The form contains several input fields: 'Your full name:' with the value 'RG', 'Fax number:' with the value '0207 654 3210', 'E-mail address:', 'Title:', 'Company:', 'Office location:', 'Department:', 'Home phone:', 'Work phone:', 'Address:' (a large text area), and 'Billing code:'. At the bottom of the window are three buttons: '< Back', 'Next >', and 'Cancel'.

 Note

- The sender information that you configure here will be automatically appended as header information when you send a fax.

The [Fax Configuration Wizard (Select Device for Sending or Receiving Faxes)] window will appear.

6. Select a device to be used for fax transmissions, enable the device for sending or receiving, and then click on the [Next] button



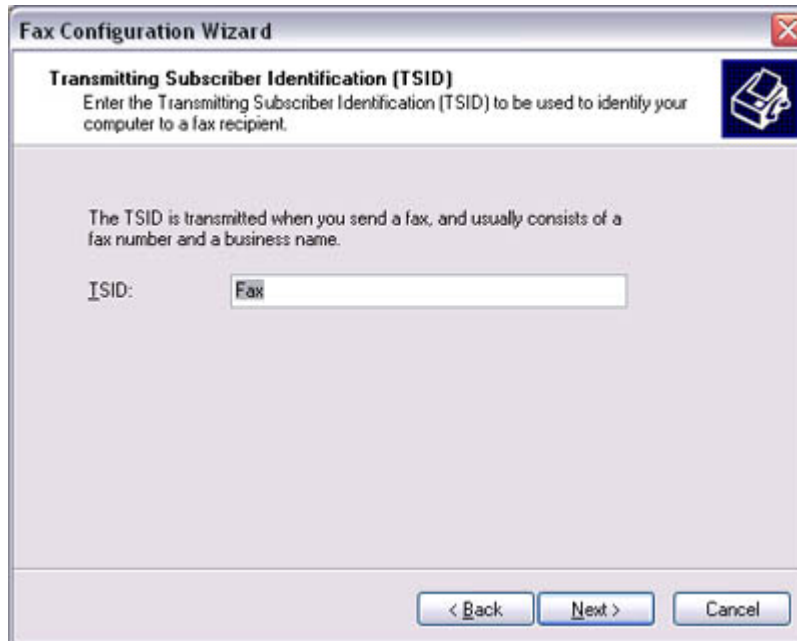
The screenshot shows the 'Fax Configuration Wizard' window with the 'Select Device for Sending or Receiving Faxes' tab selected. The window title is 'Fax Configuration Wizard'. Below the title bar, there is a sub-header 'Select Device for Sending or Receiving Faxes' and a description: 'Select the device that you want to use to send or receive faxes.' To the right of this text is a small icon of a fax machine. The form contains a dropdown menu labeled 'Please select the fax device' with 'Bluetooth Modem' selected. Below this are two checkboxes: 'Enable Send' (checked) and 'Enable Receive' (unchecked). Under 'Enable Receive', there are two radio button options: 'Manual answer' and 'Automatically answer after' with a spinner box set to '2' rings. At the bottom of the window are three buttons: '< Back', 'Next >', and 'Cancel'.

 Note

- If [Enable Receive] is selected, the device will be on standby for receiving faxes even if it is not sending or receiving anything, and therefore will be in continuous connection to the wireless modem (when **COM Auto Connect** is on). Please decide whether to select this option based on the desired objective and/or frequency of transmission.

The [Fax Configuration Wizard (Transmitting Subscriber Identification (TSID))] window will appear.

7. Click on the [Next] button
It is important that you do not change the transmitter subscriber identification.



The [Fax Configuration Wizard (Completing the Fax Configuration Wizard)] window will appear.

8. Click on the [Finish] button



The fax information will be have been registered, and the [Fax Console] window will

appear.

This will complete the fax set-up process.

Related topics: "[Sending a fax](#)" and "[Receiving a fax](#)"

Sending a fax

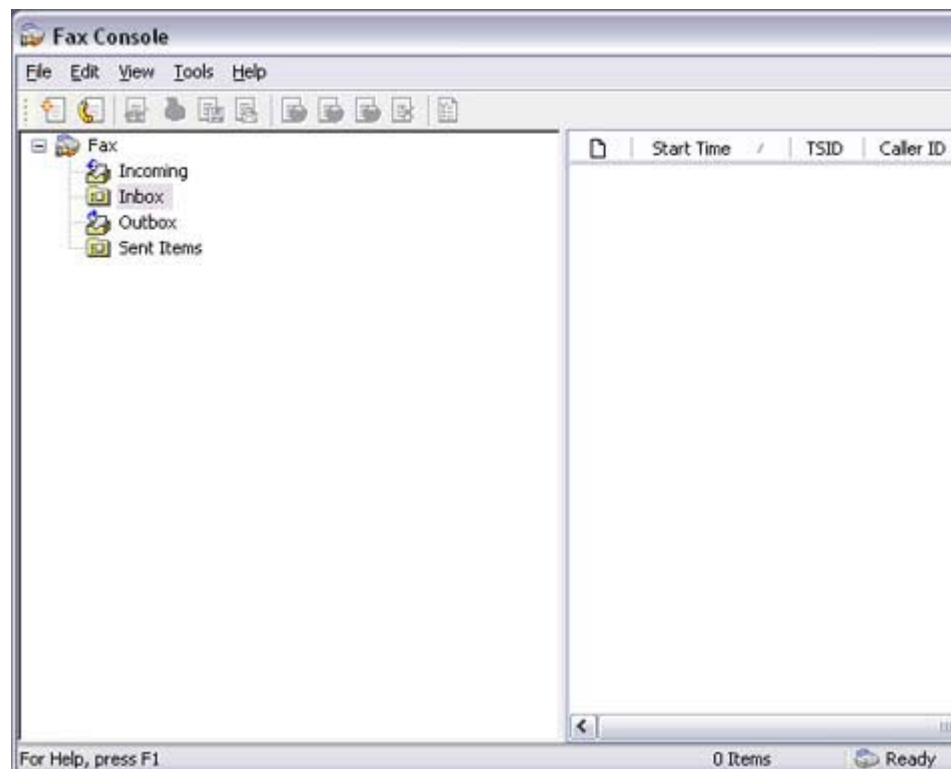
This section describes how to send a fax from the Fax Console.

Important

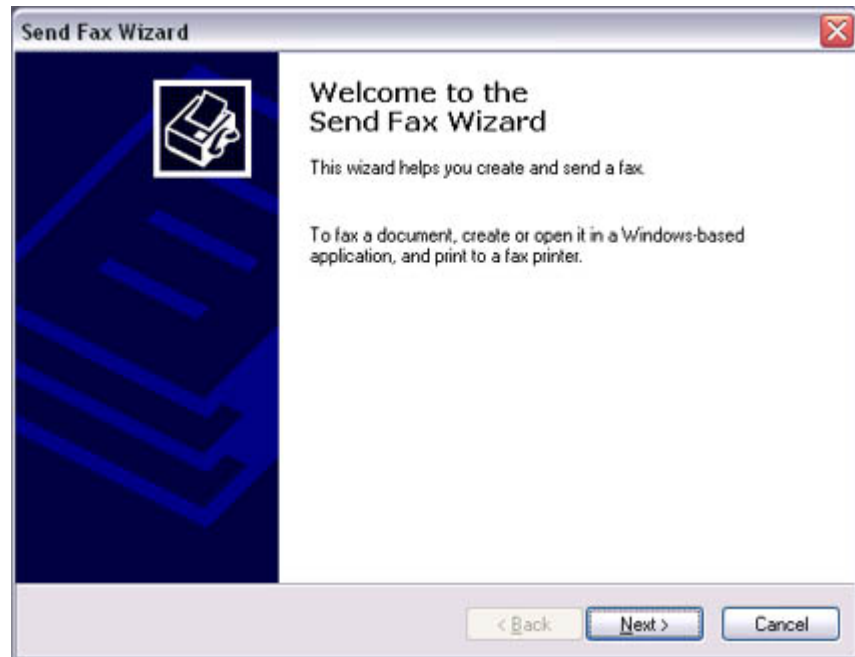
- The Fax service must be enabled for sending in order for you to send a fax. Please refer to "[Using a wireless modem station](#)" under "Troubleshooting" for how to change the send and receive settings once the service has been configured.

Procedure

1. Double-click on the [Fax] icon in the Control Panel
The [Fax Console] window will appear.



2. In the [Fax Console] window, click [File] [Send fax]
The [Send Fax Wizard (Starting the Send Fax Wizard)] window will appear.
3. Click on the [Next] button



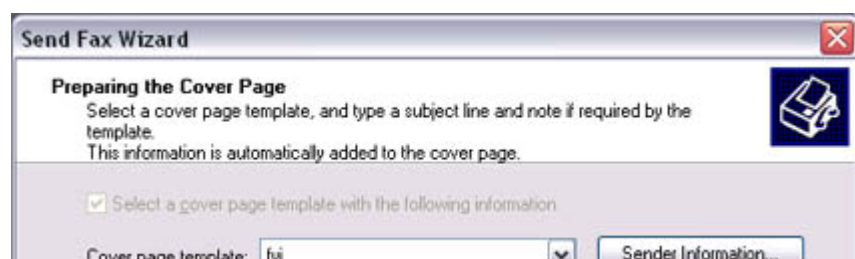
The [Send Fax Wizard (Recipient Information)] window will appear.

4. Enter the name and fax number of the destination party, and then click on the [Next] button



The [Send Fax Wizard (Preparing the Cover Page)] window will appear.

5. Specify the cover page template, subject line, and note (body text), and then click on the [Next] button



Subject line:
Nigel's leaving do

Msg:
We'll be at the Dog and Duck in Soho from 7:30 onwards.
Let me know if you'll be able to make it.

< Back Next > Cancel

The [Send Fax Wizard (Schedule)] window will appear.

- If you wish to send the fax immediately, select "Now", and then click on the [Next] button

Send Fax Wizard

Schedule
Specify when you want your fax to be sent, and set priority.
Higher priority faxes will be sent first.

When do you want to send this fax?

Now

When discount rates apply

Specific time in the next 24 hours: 08:52:13

What is the fax priority?

High

Normal

Low

< Back Next > Cancel

The [Send Fax Wizard (Completing the Send Fax Wizard)] window will appear.

- Confirm the destination information and transmission details, and then click on the [Finish] button

Send Fax Wizard

Completing the Send Fax Wizard
You have successfully created a fax as follows:

From:

Recipient name	Fax number
UK Bluetooth plc	0207 654 3210

Cover page template: fxi
Subject: Nigel's leaving do
Time to send: Now

Preview Fax ...

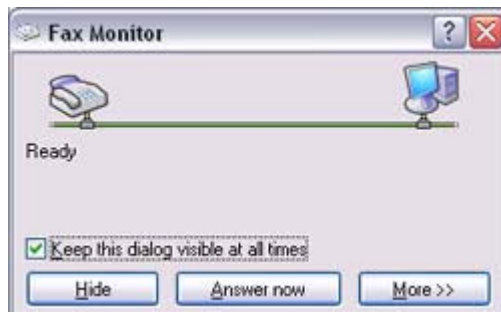
To send your fax, click Finish.



The software will automatically dial the number and send the fax.



Once the fax has been sent, Fax Monitor will revert to standby mode.



Related topic: "[Receiving a fax](#)"

Receiving a fax

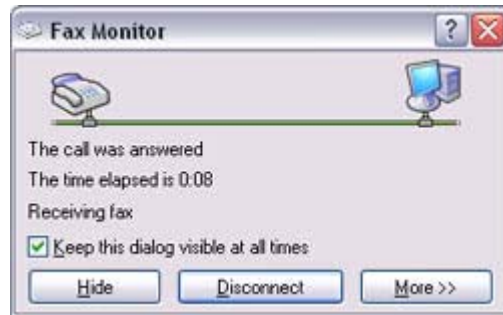
This section describes what to do when a fax arrives after you have established a connection to a modem station.

Important

- The Fax service must be enabled for receiving in order for you to receive a fax. Please refer to "[Using a wireless modem station](#)" under "Troubleshooting" for information on how to change the send and receive settings once the fax service has been configured.
- Please ensure you have connected to a modem station before you receive a fax (the device will be connected to the modem if "Enable Receive" has been selected or [COM Auto Connect](#) has been activated).

Procedure

1. When a fax arrives, the Fax Monitor will start automatically as the fax is received



Once the fax has been received, the Fax Monitor will revert to standby mode.

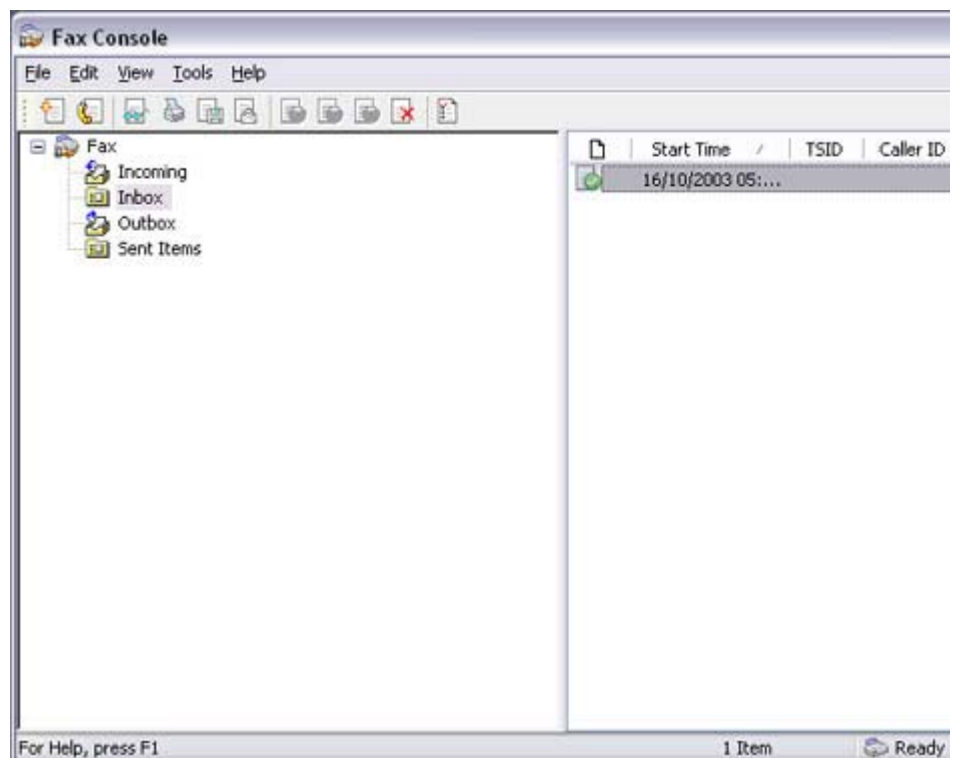
Note

- If you have enabled manual fax reception, the message below will appear when a fax arrives.



Click on the message with your mouse to receive the fax.

2. Double-click on the [Fax] icon in the Control Panel
The [Fax Console] window will appear.
3. In the [Fax Console] window, double-click on the fax that has arrived



An image of the received fax will be displayed.

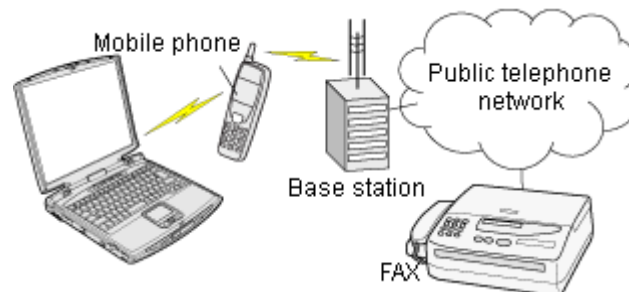




Related topic: "[Sending a fax](#)"

Using a mobile telephone for fax transmissions [\[FAX\]](#)

This section describes how to send a fax using a mobile telephone as a modem.



[Setting up the mobile telephone](#)

[Installing a modem](#)

[Setting fax information](#)

[Sending a fax](#)

[Receiving a fax](#)

Important

- Please ensure that any drivers used to connect the PC to the mobile telephone have been installed.
- A Bluetooth passkey (PIN code) is required for you to connect to the mobile telephone. Please make a note of your Bluetooth passkey before you start the set-up process.
- A fax application is required for you to be able to send and receive faxes. The description below is based on an example using Microsoft Fax, which is installed with Windows XP as standard.

[If you are going to use a commercially available fax application](#), then please refer to the manual that came with the application for information on how to send and receive faxes.

Setting up the mobile telephone

Set up and register the mobile telephone as a fax service.

Procedure

1. Turn on the mobile telephone, and set it to be connectable via Bluetooth

Note

- Please refer to the instruction manual for information on how to operate the telephone.
2. Right-click on the Bluetooth icon in the task tray, and then click on [Add New Connection]



Note

- Alternatively, click [Start] [All Programs] [Bluetooth] [Bluetooth Settings], and then click on [New Connection] from the active [Bluetooth Settings] window.

The [Add New Connection Wizard (Welcome to the Add New Connection Wizard)] window will appear.

3. Select [Custom Mode], and then click on the [Next] button



The [Add New Connection Wizard (Searching for Bluetooth devices)] window will appear.



Once the program has finished searching for the devices, the [Add New Connection Wizard (Select Device)] window will appear.

4. Select the device name of the mobile telephone from [Device List], and then click on the [Next] button



The [Add New Connection Wizard (Searching for Services)] window will appear.



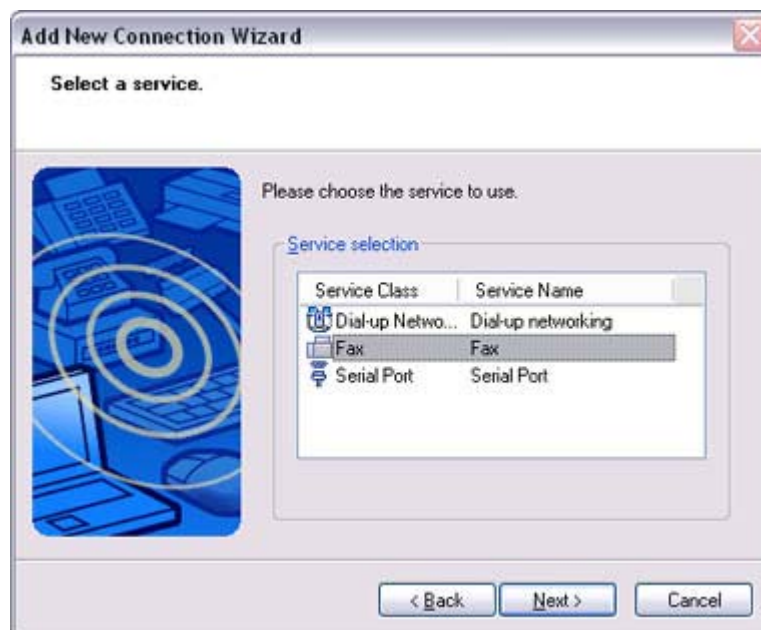


5. If you are connecting to the mobile telephone for the first time, enter the passkey for the device from the [Bluetooth Passkey (PIN Code)] window, and then click on the [OK] button.



Once the program has finished searching for the services, the [Add New Connection Wizard (Select Service)] window will appear.

6. Select "Fax" under [Select Service], and then click on the [Next] button



The [Add New Connection Wizard (Connecting to Remote Device)] screen will appear.

The COM port and modem registration process will then be automatically performed.



Once the COM port and modem (standard 33600 bps type) registration is complete, the [Add New Connection Wizard (Setting Connection Name)] screen will appear.

7. Configure the type and name of the icon to appear after registration, and click on the [Next] button.
Please click only on the [Next] button once you are satisfied with the configuration.



The [Add New Connection Wizard (Completing the Add New Connection Wizard)] screen will appear.

8. Click on the [Finish] button

The settings will be registered, and the icon will appear on the [Bluetooth Settings] screen.



● Setting fax information

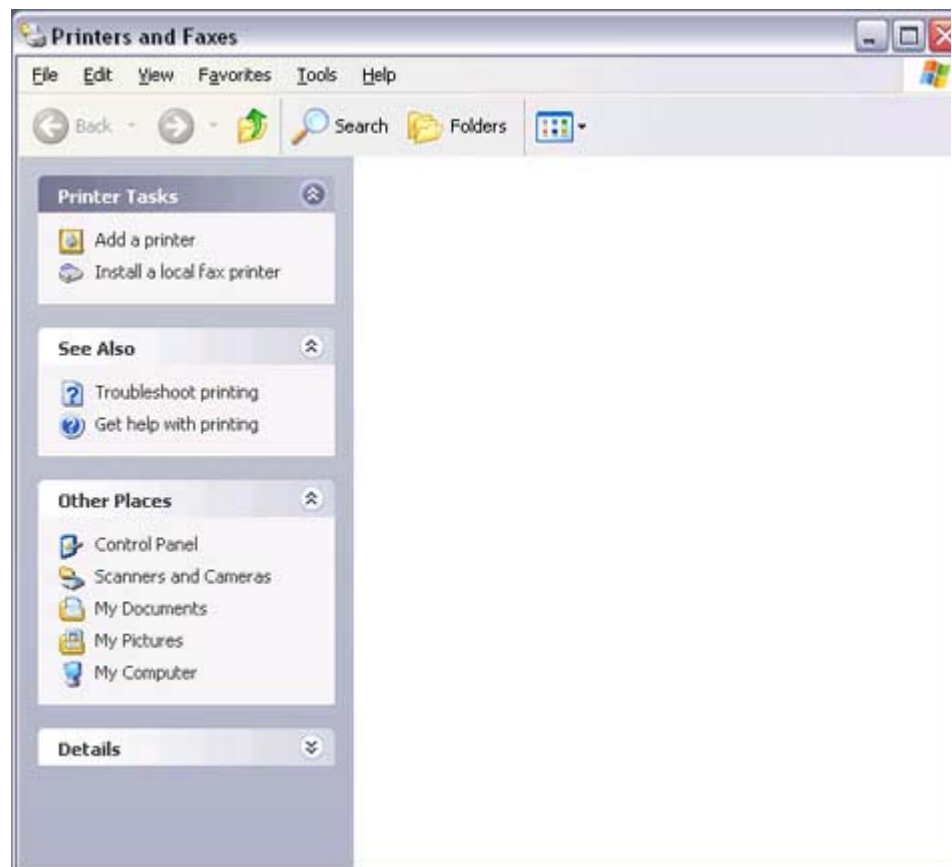
Configure send/receive settings and register fax information.

Procedure

1. Select [Start] [Control Panel], and then double-click on the [Printers and Other Hardware] icon

Note

- If the control panel is displayed in "Classic view", and you use Windows 2000, please start from Step (2).
2. Double-click on the [Printers and Faxes] icon
The [Printers & Faxes] window will appear.
 3. Click on "Set up faxing" in the [Printers and Faxes] window

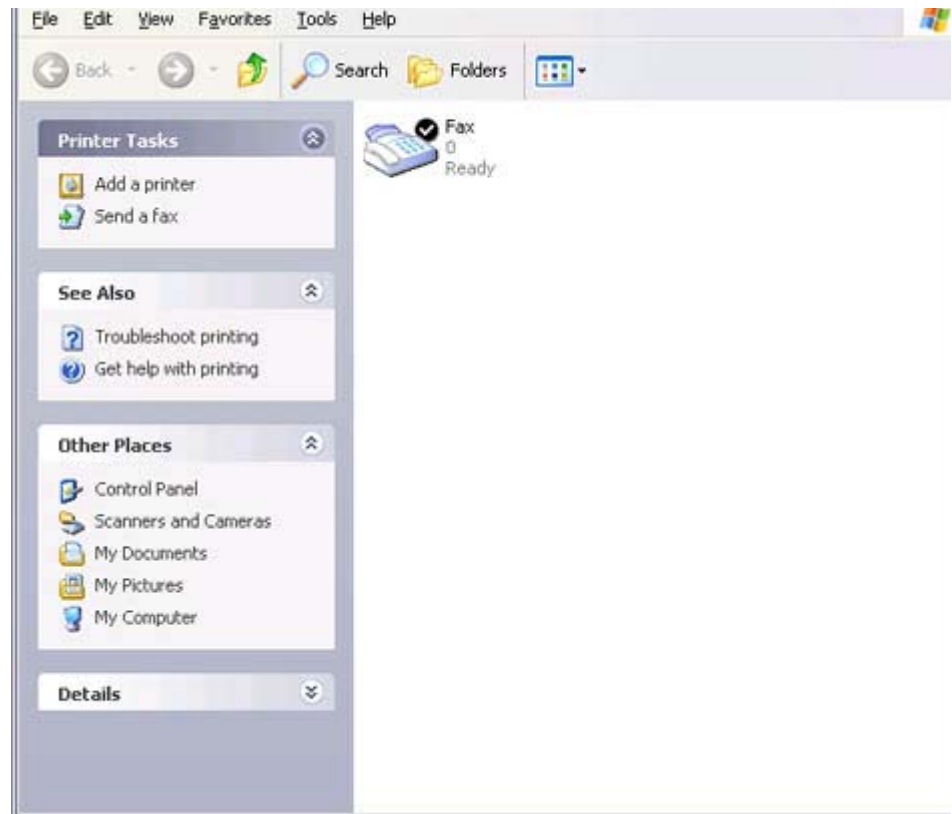


A window showing installed programs will appear, and a Fax icon will have been created in the [Printers and Faxes] screen.



4. Click on "Send a fax" under "Printer Tasks" on the left side of the window





If you have not yet configured a fax device, the [Fax Configuration Wizard] window will appear. In the window you can enter settings pertaining to the sender (yourself).

Note

- If the fax configuration information has already been registered, the [Send Fax Wizard] window, which can be viewed under " [Sending a fax](#)" below, will appear instead of the [Fax Configuration Wizard] window.

5. Enter the sender information, and click on the [Next] button

Note

- The sender information that you configure here will be automatically appended as header information when you send a fax.

The [Fax Configuration Wizard (Select Device for Sending or Receiving Faxes)] window will appear.

6. Select a device to be used for fax transmissions, enable the device for sending or receiving, and then click on the [Next] button



 **Note**

- If [Enable Receive] is selected, the device will be on standby for receiving faxes even if it is not sending or receiving anything, and therefore will be in continuous connection to the wireless modem (when COM Auto Connect is on). Please decide whether to select this option based on to the desired objective and/or frequency of transmission.

The [Fax Configuration Wizard (Transmitting Subscriber Identification (TSID))] window will appear.

7. Click on the [Next] button
It is important that you do not change the transmitter subscriber identification.





The [Fax Configuration Wizard (Completing the Fax Configuration Wizard)] window will appear.

- Click on the [Finish] button



The fax information will be have been registered, and the [Fax Console] window will appear.

This will complete the fax set-up process.

Related topics: "[Sending a fax](#)" and "[Receiving a fax](#)"

Sending a fax

This section describes how to send a fax from the Fax Console.

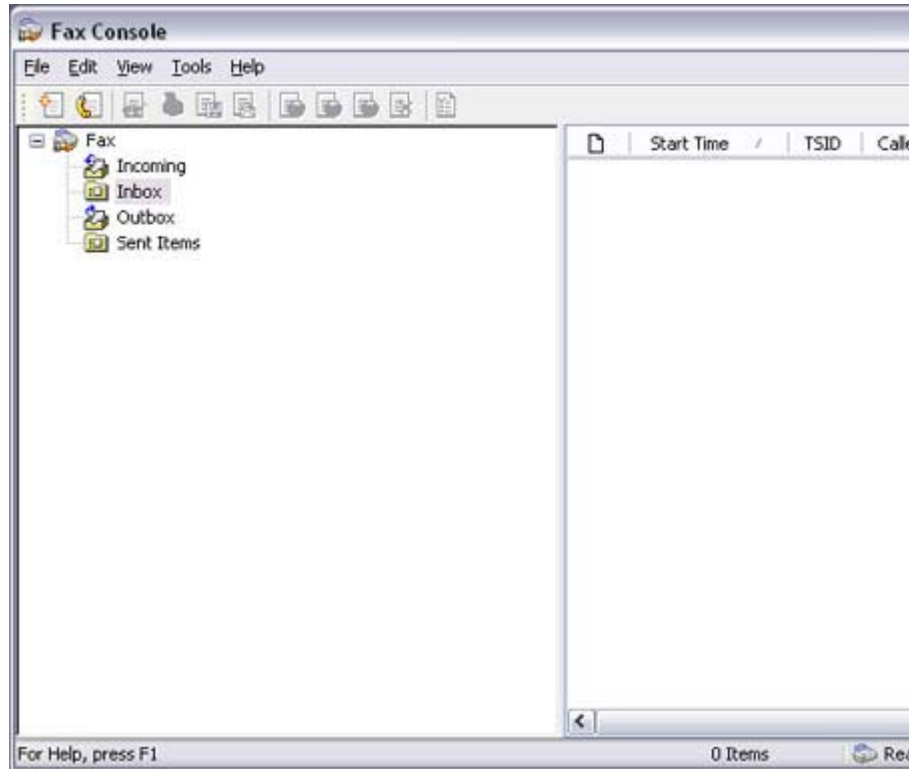
Important

- The Fax service must be enabled for sending in order for you to send a fax. Please refer to "[Using a mobile telephone](#)" under "Troubleshooting" for how to change the send and receive settings once the service has been configured."

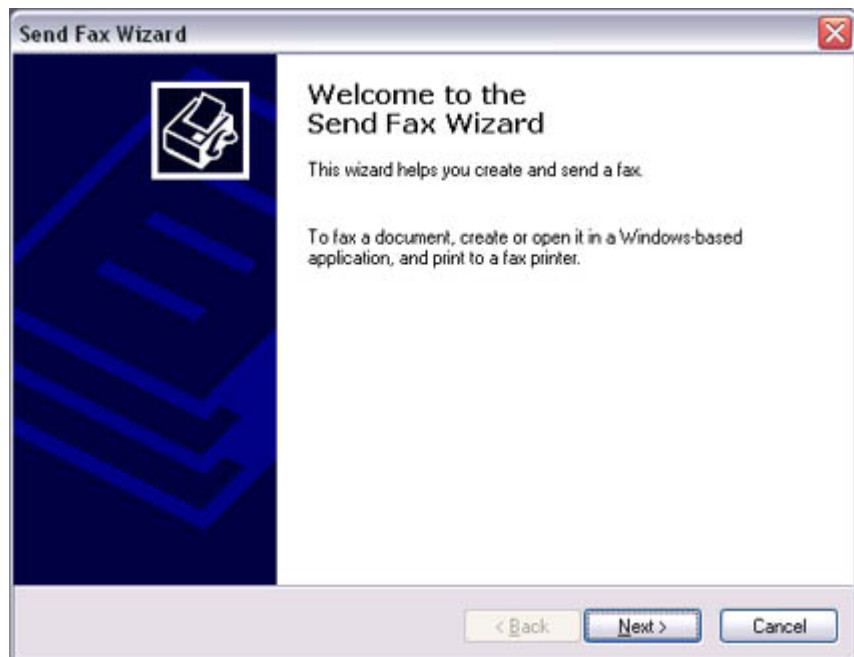
Procedure

- Double-click on the [Fax] icon in the Control Panel

1. Double-click on the [Fax] icon in the Control Panel
The [Fax Console] window will appear.



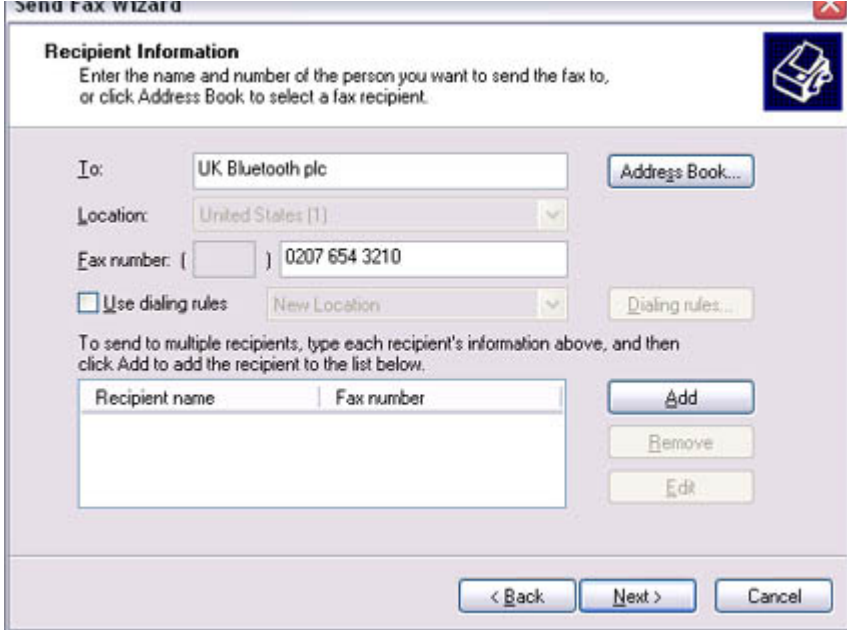
2. In the [Fax Console] window, click [File] [Send fax]
The [Send Fax Wizard (Starting the Send Fax Wizard)] window will appear.
3. Click on the [Next] button



The [Send Fax Wizard (Recipient Information)] window will appear.

4. Enter the name and fax number of the destination party, and then click on the [Next] button





Send Fax Wizard

Recipient Information
Enter the name and number of the person you want to send the fax to, or click Address Book to select a fax recipient.

To:

Location:

Fax number: ()

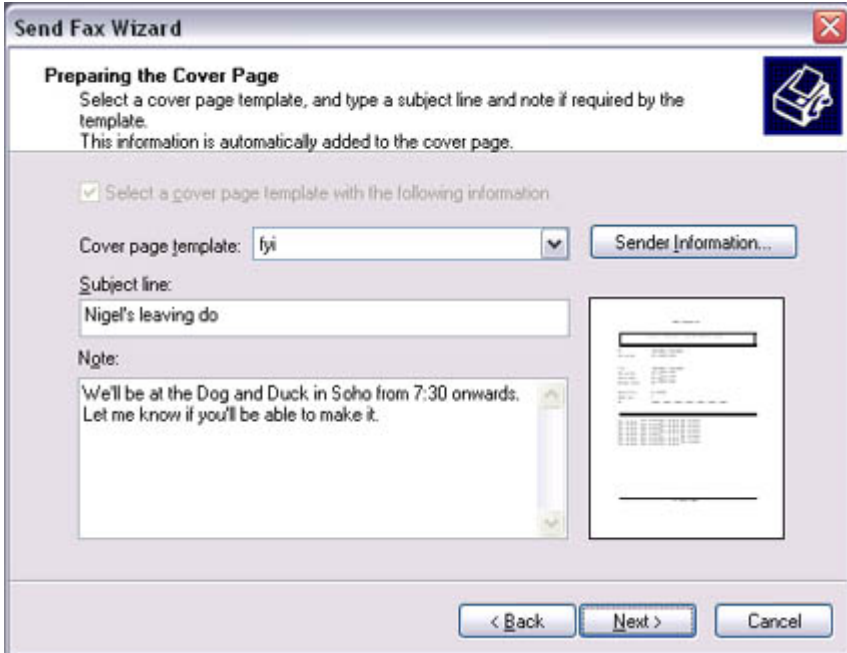
Use dialing rules

To send to multiple recipients, type each recipient's information above, and then click Add to add the recipient to the list below.

Recipient name	Fax number

The [Send Fax Wizard (Preparing the Cover Page)] window will appear.

- Specify the cover page template, subject line, and note (body text), and then click on the [Next] button



Send Fax Wizard

Preparing the Cover Page
Select a cover page template, and type a subject line and note if required by the template. This information is automatically added to the cover page.

Select a cover page template with the following information

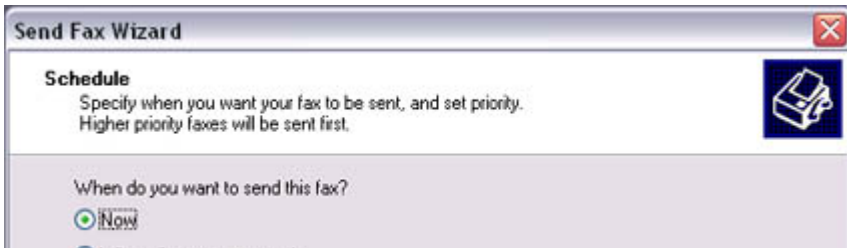
Cover page template:

Subject line:

Note:

The [Send Fax Wizard (Schedule)] window will appear.

- If you wish to send the fax immediately, select "Now", and then click on the [Next] button



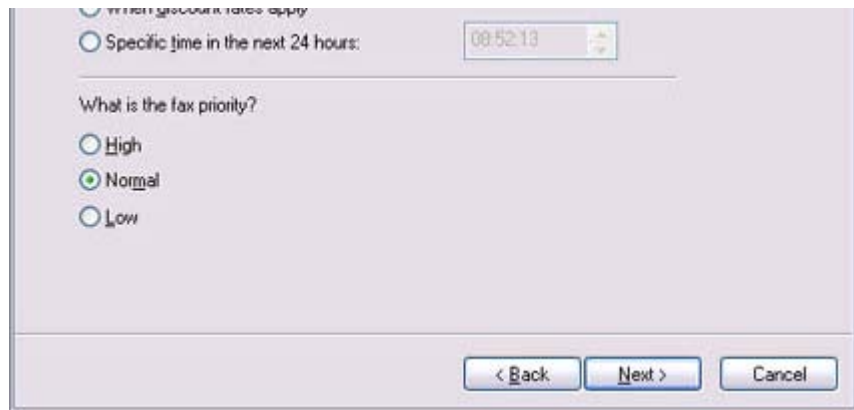
Send Fax Wizard

Schedule
Specify when you want your fax to be sent, and set priority. Higher priority faxes will be sent first.

When do you want to send this fax?

Now

When discount rates apply



The [Send Fax Wizard (Completing the Send Fax Wizard)] window will appear.

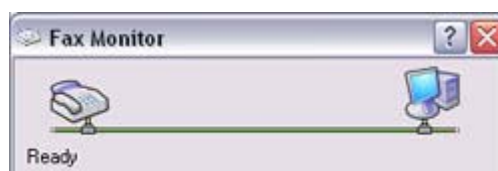
7. Confirm the destination information and transmission details, and then click on the [Finish] button



The software will automatically dial the number and send the fax.



Once the fax has been sent, Fax Monitor will revert to standby mode.





Related topic: "[Receiving a fax](#)"

Receiving a fax

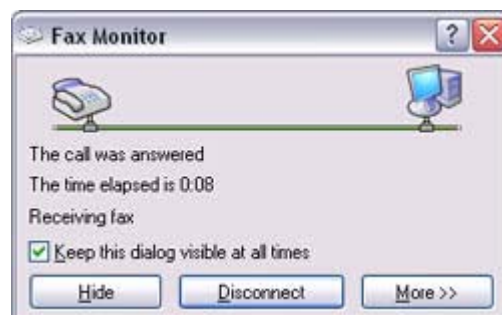
This section describes what to do when a fax arrives after you have established a connection to a modem station.

Important

- The Fax service must be enabled for receiving in order for you to receive a fax. Please refer to "[Using a mobile telephone](#)" under "Troubleshooting" for information on how to change the send and receive settings once the fax service has been configured.
- Please ensure you have connected to a modem station before you receive a fax (the device will be connected to the modem if "Enable Receive" has been selected or [COM Auto Connect](#) has been activated).

Procedure

1. When a fax arrives, the Fax Monitor will start automatically as the fax is received



Once the fax has been received, the Fax Monitor will revert to standby mode.

Note

- If you have enabled manual fax reception, the message below will appear when a fax arrives.



Click on the message with your mouse to receive the fax.

2. Double-click on the [Fax] icon in the Control Panel
The IFax Console window will appear