

TEST REPORT

Equipment Under Test	: Notebook P.C.
Model No.	: W1S00N, W1B00N
FCC ID	: MSQW1NWM3B2200
Applicant	: ASUSTeK COMPUTER INC.
Address of Applicant	: 4FL., No. 150, Li-Te Rd., Peitou, Taipei, Taiwan, R.O.C.
Date of Receipt	: 2004.02.20
Date of Test(s)	: 2004.02.24-2004.2.29
Date of Issue	: 2004.02.29

Standards:

**FCC OET Bulletin 65 supplement C,
ANSI/IEEE C95.1 , C95.3**

In the configuration tested, the EUT complied with the standards specified above.

Remarks:

This report details the results of the testing carried out on one sample, the results contained in this test report do not relate to other samples of the same product. The manufacturer should ensure that all products in series production are in conformity with the product sample detailed in this report.

This report may only be reproduced and distributed in full. If the product in this report is used in any configuration other than that detailed in the report, the manufacturer must ensure the new system complies with all relevant standards. Any mention of SGS Taiwan E&E Services or testing done by SGS Taiwan E&E Services in connection with distribution or use of the product described in this report must be approved by SGS Taiwan E&E Services in writing.

Tested by : Dikin Yang Date : 2004/02/29

Approved by : Robert Chang Date : 2004/02/29

Contents

1. General Information

1.1 Testing Laboratory.....	4
1.2 Details of Applicant.....	4
1.3 Description of EUT(s).....	4
1.4 Test Environment.....	5
1.5 Operation description.....	5
1.6 Evaluation procedures.....	6
1.7 The SAR Measurement System.....	7
1.8 System Components.....	9
1.9 SAR System Verification.....	10
1.10 Tissue Simulant Fluid for the Frequency Band 2.4 to 2.5 GHz.....	11
1.11 Test Standards and Limits.....	12

2. Instruments List.....

3. Summary of Results.....

4. Measurements.....

802.11b

Configuration 1

4.1.1 Left Side position, lowest channel.....	19
4.1.2 Left Side position, middle channel.....	20
4.1.3 Left Side position, highest channel.....	21

Configuration 2

4.1.4 Back of the LCD panel position, lowest channel.....	22
4.1.5 Back of the LCD panel position, middle channel.....	23
4.1.6 Back of the LCD panel position, highest channel.....	24

Configuration 3

4.1.7 LCD panel position, lowest channel.....	25
4.1.8 LCD panel position, middle channel.....	26
4.1.9 LCD panel position, highest channel.....	27

Configuration 4

4.1.10 Right Side position, lowest channel.....	28
4.1.11 Right Side position, middle channel.....	29
4.1.12 Right Side position, highest channel.....	30

Configuration 5

4.1.13 Back of the LCD panel position, lowest channel.....	31
4.1.14 Back of the LCD panel position, middle channel.....	32
4.1.15 Back of the LCD panel position, highest channel.....	33

Configuration 6

4.1.16 LCD panel position, lowest channel.....	34
4.1.17 LCD panel position, middle channel.....	35
4.1.18 LCD panel position, highest channel.....	36

802.11g

Configuration 1

4.2.1 Left Side position, lowest channel.....	37
4.2.2 Left Side position, middle channel.....	38
4.2.3 Left Side position, highest channel.....	39

Configuration 2

4.2.4 Back of the LCD panel position, lowest channel.....	40
4.2.5 Back of the LCD panel position, middle channel.....	41
4.2.6 Back of the LCD panel position, highest channel.....	42

Configuration 3

4.2.7 LCD panel position, lowest channel.....	43
4.2.8 LCD panel position, middle channel.....	44
4.2.9 LCD panel position, highest channel.....	45

Configuration 4

4.2.10 Right Side position, lowest channel.....	46
4.2.11 Right Side position, middle channel.....	47
4.2.12 Right Side position, highest channel.....	48

Configuration 5

4.2.13 Back of the LCD panel position, lowest channel.....	49
4.2.14 Back of the LCD panel position, middle channel.....	50
4.2.15 Back of the LCD panel position, highest channel.....	51

Configuration 6

4.2.16 LCD panel position, lowest channel.....	52
4.2.17 LCD panel position, middle channel.....	53
4.2.18 LCD panel position, highest channel.....	54

4.3 System Performance Validation	55
---	----

APPENDIX

1. Photographs of Test Setup.....	56
2. Photographs of EUT.....	60
3. Probe Calibration certificate.....	63
4. Uncertainty Analysis.....	67
5. Phantom description.....	68
6. System Validation from Original equipment supplier.....	69

1. General Information

1.1 Testing Laboratory

SGS Taiwan Ltd. (FCC Registration number: 573967)
 1F, No. 134, Wukung Road, Wuku industrial zone
 Taipei county , Taiwan , R.O.C.
 Telephone : +886-2-2299-3279
 Fax : +886-2-2298-2698
 Internet : <http://www.sgs.com.tw>

1.2 Details of Applicant

Name : ASUSTeK COMPUTER INC.
 Address : 4FL., No. 150, Li-Te Rd., Peitou, Taipei, Taiwan, R.O.C.

1.3 Description of EUT(s)

Equipment Type	Notebook P.C.	
Test Procedure	FCC OET Bulletin 65, Supplement C	
TX Frequency range	2412-2462 MHz	
FCC ID	MSQW1NWM3B2200	
Model No.	W1S00N, W1B00N	
Number Of Channel	11	
Modulation	Direct Sequence Spread Spectrum (DSSS)	
Transfer Rate	802.11b	1, 2, 5.5, 11 Mbps
	802.11g	6 Mbps
Max. SAR Measured	802.11b	1.2 W/kg
	802.11g	0.646 W/kg
Antenna Gain	2dB	
Antenna Type	PIFA	
I/O Port	Mini PCI	
Power Supply	19Vdc from AC adapter	

NOTE:

1. The mini PCI card, which brand is Intel and the model name is WM3B2200BG, is specified to this EUT.
2. The EUT is powered by the following adapter:

Brand	DELTA
Model	ADP-65DB
Input	100-240Vac 1.5A 50-60Hz
Output	19Vdc 3.42A

3. For more detailed features description, please refer to the manufacturer's specifications or User's Manual.

1.4 Test Environment

Ambient temperature : 22.1° C

Tissue Simulating Liquid : 21.9° C

Relative Humidity : 50 %

1.5 Operation Configuration

Channel Frequency Under Test And Its Conducted Output Power	802.11b	802.11g
	20.36 dBm(2412MHz)	18.02 dBm(2412MHz)
	19.92 dBm 2437MHz)	17.68 dBm 2437MHz)
	19.57 dBm(2462MHz)	17.46 dBm(2462MHz)
Antenna Configuration	Internal Antenna	
Antenna Position	The Antennas are located at both sides of the LCD; the left Antenna is the main antenna, and the right one is the auxiliary.	
EUT Power Source	From The Host Equipment	
HOST Power Source	Fully Charged Battery	

The following test configurations have been applied in this test report:

Main Antenna

Configuration 1: The left side of EUT contact to the flat phantom. The transmitted antenna of the EUT located under the reference point of the flat phantom.(Fig.2)

Configuration 2: The back of the LCD Panel of EUT contact to the flat phantom. The transmitted antenna of the EUT located under the reference point of the flat phantom. (Fig.3)

Configuration 3: The LCD panel of EUT contact to the flat phantom. The transmitted antenna of the EUT located under the reference point of the flat phantom. (Fig.4)

Auxiliary Antenna

Configuration 4: The right side of EUT contact to the flat phantom. The transmitted antenna of the EUT located under the reference point of the flat phantom. (Fig.5)

Configuration 5: The back of the LCD Panel of EUT contact to the flat phantom. The transmitted antenna of the EUT located under the reference point of the flat phantom. (Fig.6)

Configuration 6: The LCD panel of EUT contact to the flat phantom. The transmitted antenna of the EUT located under the reference point of the flat phantom. (Fig.7)

NOTE:

1. Please reference "APPENDIX 1" for the photos of test configuration.
2. All test Configuration have been complied with the body worn configuration.
3. The Notebook has been installed the controlling software that could control the EUT transmitted channel and power. But that software is just for test software, not for normal user.

1.6 EVALUATION PROCEDURES

The entire evaluation of the spatial peak values is performed within the Post-processing engine (SEMCAD). The system always gives the maximum values for the 1 g and 10 g cubes. The algorithm to find the cube with highest averaged SAR is divided into the following stages:

1. The extraction of the measured data (grid and values) from the Zoom Scan
2. The calculation of the SAR value at every measurement point based on all stored data (A/D values and measurement parameters)
3. The generation of a high-resolution mesh within the measured volume
4. The interpolation of all measured values from the measurement grid to the high-resolution grid
5. The extrapolation of the entire 3-D field distribution to the phantom surface over the distance from sensor to surface
6. The calculation of the averaged SAR within masses of 1g and 10g.

The probe is calibrated at the center of the dipole sensors that is located 1 to 2.7mm away from the probe tip. During measurements, the probe stops shortly above the

phantom surface, depending on the probe and the surface detecting system. Both distances are included as parameters in the probe configuration file. The software always knows exactly how far away the measured point is from the surface. As the probe cannot directly measure at the surface, the values between the deepest measured point and the surface must be extrapolated. The angle between the probe axis and the surface normal line is less than 30 degree.

In the Area Scan, the gradient of the interpolation function is evaluated to find all the extreme of the SAR distribution. The uncertainty on the locations of the extreme is less than 1/20 of the grid size. Only local maximum within -2 dB of the global maximum are searched and passed for the Cube Scan measurement. In the Cube Scan, the interpolation function is used to extrapolate the Peak SAR from the lowest measurement points to the inner phantom surface (the extrapolation distance). The uncertainty increases with the extrapolation distance. To keep the uncertainty within 1% for the 1 g and 10 g cubes, the extrapolation distance should not be larger than 5mm.

The maximum search is automatically performed after each area scan measurement. It is based on splines in two or three dimensions. The procedure can find the maximum for most SAR distributions even with relatively large grid spacing. After the area scanning measurement, the probe is automatically moved to a position at the interpolated maximum. The following scan can directly use this position for reference, e.g., for a finer resolution grid or the cube evaluations. The 1g and 10g peak evaluations are only available for the predefined cube 7x7x7 scans. The routines are verified and optimized for the grid dimensions used in these cube measurements. The measured volume of 30x30x30mm contains about 30g of tissue. The first procedure is an extrapolation (incl. Boundary correction) to get the points between the lowest measured plane and the surface. The next step uses 3D interpolation to get all points within the measured volume in a 1mm grid (42875 points). In the last step, a 1g cube is placed numerically into the volume and its averaged SAR is calculated. This cube is the moved around until the highest averaged SAR is found. If the highest SAR is found at the edge of the measured volume, the system will issue a warning: higher SAR values might be found outside of the measured volume. In that case the cube measurement can be repeated, using the new interpolated maximum as the center.

1.7 The SAR Measurement System

A photograph of the SAR measurement System is given in Fig. a. This SAR Measurement System uses a Computer-controlled 3-D stepper motor system (Speag Dasy 4 professional system). A Model ET3DV6 1759 E-field probe is used to determine the internal electric fields. The SAR can be obtained from the equation $SAR = \sigma (|E_i|^2) / \rho$

where σ and ρ are the conductivity and mass density of the tissue-simulant.

The DASY4 system for performing compliance tests consists of the following items:

- A standard high precision 6-axis robot (Staubli RX family) with controller, teach pendant and software. An arm extension for accommodating the data acquisition electronics (DAE).
- A dosimeter probe, i.e., an isotropic E-field probe optimized and calibrated for usage in tissue simulating liquid. The probe is equipped with an optical surface detector system.
- A data acquisition electronics (DAE) which performs the signal amplification, signal multiplexing, AD-conversion, offset measurements, mechanical surface detection, collision detection, etc. The unit is battery powered with standard or rechargeable batteries. The signal is optically transmitted to the EOC.

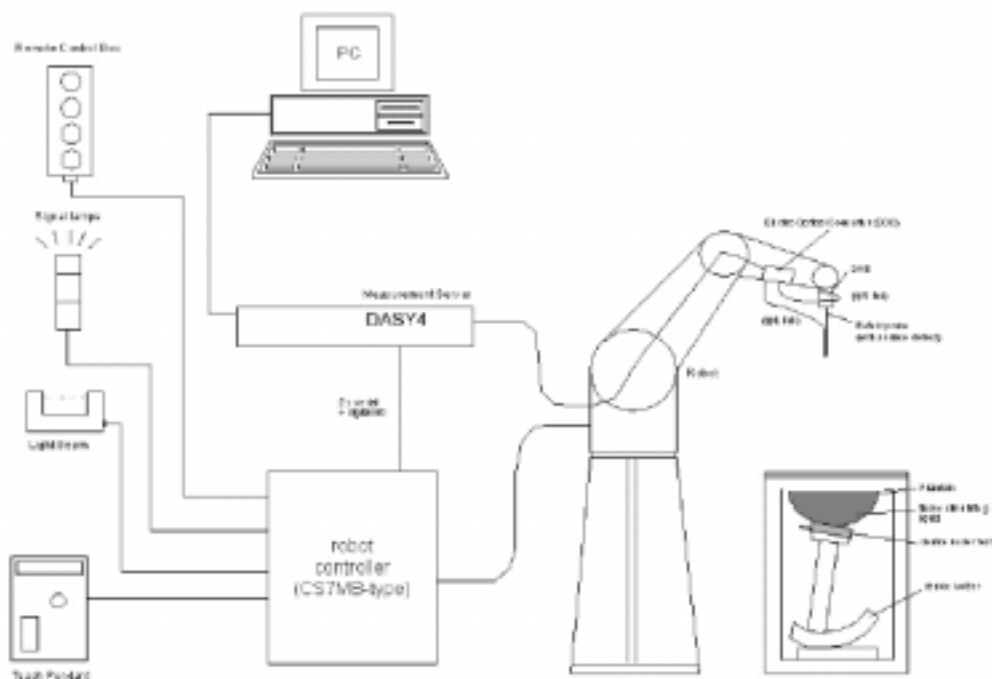


Fig. a The microwave circuit arrangement used for SAR system verification

- The Electro-optical converter (EOC) performs the conversion between optical and electrical of the signals for the digital communication to the DAE and for the analog signal from the optical surface detection. The EOC is connected to the measurement server.
- The function of the measurement server is to perform the time critical tasks such as signal filtering, control of the robot operation and fast movement interrupts.
- A probe alignment unit which improves the (absolute) accuracy of the probe

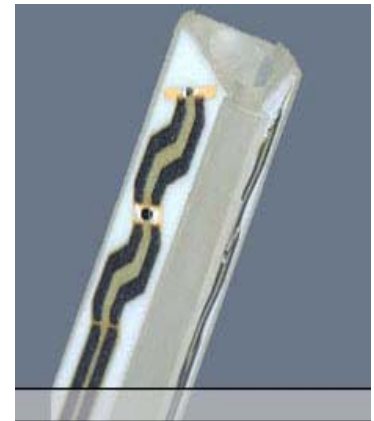
positioning.

- A computer operating Windows 2000 or Windows XP.
- DASY4 software.
- Remote control with teach pendant and additional circuitry for robot safety such as warning lamps, etc.
- The SAM twin phantom enabling testing left-hand and right-hand usage.
- The device holder for handheld mobile phones.
- Tissue simulating liquid mixed according to the given recipes.
- Validation dipole kits allowing to validate the proper functioning of the system.

1.8 System Components

ET3DV6 E-Field Probe

Construction:	Symmetrical design with triangular core Built-in shielding against static charges PEEK enclosure material (resistant to organic solvents, e.g. glycol)
Calibration:	In air from 10 MHz to 2.5 GHz In brain simulating tissue at frequencies of 900 MHz and 1.8 GHz (accuracy $\pm 8\%$)
Frequency:	10 MHz to >6 GHz; Linearity: ± 0.2 dB (30 MHz to 3 GHz)
Directivity:	± 0.2 dB in brain tissue (rotation around probe axis) ± 0.4 dB in brain tissue (rotation normal to probe axis)
Dynamic Range:	5 μ W/g to >100 mW/g; Linearity: ± 0.2 dB
Srfce. Detect:	± 0.2 mm repeatability in air and clear liquids over diffuse reflecting surfaces
Dimensions:	Overall length: 330 mm Tip length: 16 mm Body diameter: 12 mm Tip diameter: 6.8 mm Distance from probe tip to dipole centers: 2.7 mm
Application:	General dosimetry up to 3 GHz Compliance tests of mobile phone



ET3DV6 E-Field Probe

NOTE:

1. The Probe parameters have been calibrated by the SPEAG. Please reference "APPENDIX 3" for the Calibration Certification Report.

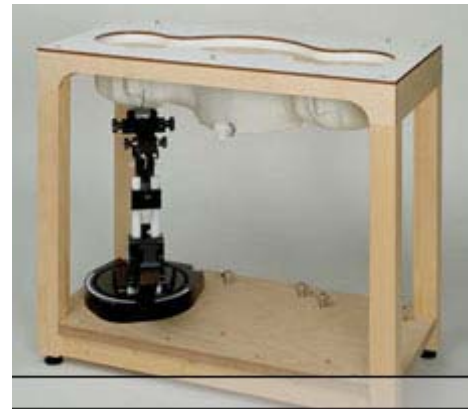
SAM PHANTOM V4.0C

Construction: The shell corresponds to the specifications of the Specific Anthropomorphic Mannequin (SAM) phantom defined in IEEE 1528-200X, CENELEC 50361 and IEC 62209. It enables the dosimetric evaluation of left and right hand phone usage as well as body mounted usage at the flat phantom region. A cover prevents evaporation of the liquid. Reference markings on the phantom allow the complete setup of all predefined phantom positions and measurement grids by manually teaching three points with the robot.

Shell Thickness: 2 ± 0.2 mm

Filling Volume: Approx. 25 liters

Dimensions: Height: 810 mm;
Length: 1000 mm;
Width: 500 mm



PHANTOM v4.0C

DEVICE HOLDER

Construction In combination with the Twin SAM Phantom V4.0/V4.0C or Twin SAM, the Mounting Device (made from POM) enables the rotation of the mounted transmitter in spherical coordinates, whereby the rotation point is the ear opening. The devices can be easily and accurately positioned according to IEC, IEEE, CENELEC, FCC or other specifications. The device holder can be locked at different phantom locations (left head, right head, flat phantom).



Device Holder

1.9 SAR System Verification

The microwave circuit arrangement for system verification is sketched in Fig. b. The daily system accuracy verification occurs within the flat section of the SAM phantom. A SAR

measurement was performed to see if the measured SAR was within $\pm 10\%$ from the target SAR values. These tests were done at 2450MHz. The tests were conducted on the same days as the measurement of the DUT. The obtained results from the system accuracy verification are displayed in the table 1 (SAR values are normalized to 1W forward power delivered to the dipole). During the tests, the ambient temperature of the laboratory was in the range 22.1 °C, the relative humidity was in the range 50% and the liquid depth above the ear reference points was above 15 cm (Fig.8) in all the cases. It is seen that the system is operating within its specification, as the results are within acceptable tolerance of the reference values.

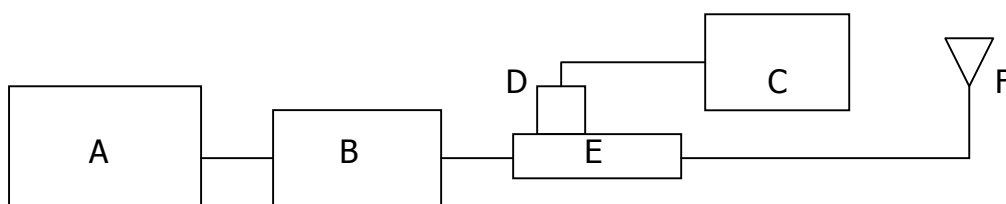


Fig. b The microwave circuit arrangement used for SAR system verification

- A. Agilent Model 8648D Signal Generator
- B. Mini circuits Model ZHL-42-SMA Amplifier
- C. Agilent Model E4416A Power Meter
- D. Agilent Model 8482H Power Sensor
- E. Agilent Model 777D Dual directional coupling
- F. Reference dipole Antenna



Photograph of the 2450MHz System Check

Validation Kit	Frequency	Target SAR 1g (250mW)	Target SAR 10g (250mW)	Measured SAR 1g	Measured SAR 10g	Measured date
DT3DV6 S/N :1759	2450 MHz	13.7 m W/g	6.02 m W/g	13.1 m W/g	5.9 m W/g	2004/02/24

Table 1. Results system validation

1.10 Tissue Simulant Fluid for the Frequency Band 2.4 to 2.5 GHz

The dielectric properties for this body-simulant fluid were measured by using the HP Model 85070D Dielectric Probe (rates frequency band 200 MHz to 20 GHz) in conjunction with HP 8714ET Network Analyzer(300 KHz-3000 MHz) by using a procedure detailed in Section V.

F (Mhz)	Tissue type	Limits/ Measured	Dielectric Parameters		
			Permittivity	Conductivity	Simulated Tissue Temp(° C)
2450	Body	Measured, 20-02-04	52.82	1.908	22.0
		Measured, 20-02-04	52.71	1.9	21.9
		Recommended Limits	50.1-55.3	1.85-2.05	20-24

The composition of the brain tissue simulating liquid for 2450 MHz is:

Ingredient	2450Mhz (Head)	2450Mhz (Body)
DGMBE	550.0 g	301.7 ml
Water	450.0 g	698.3 ml
Total amount	1 L (1.0kg)	1 L (1.0kg)

1.11 Test Standards and Limits

According to FCC 47CFR §2.1093(d) The limits to be used for evaluation are based generally on criteria published by the American National Standards Institute (ANSI) for localized specific absorption rate ("SAR") in Section 4.2 of "IEEE Standard for Safety Levels with Respect to Human Exposure to Radio Frequency Electromagnetic Fields, 3 kHz to 300 GHz," ANSI/IEEE C95.1–1992, Copyright 1992 by the Institute of Electrical and Electronics Engineers, Inc., New York, New York 10017. These criteria for SAR evaluation are similar to those recommended by the National Council on Radiation Protection and Measurements (NCRP) in "Biological Effects and Exposure Criteria for Radio frequency Electromagnetic Fields," NCRP Report No. 86, Section 17.4.5. Copyright NCRP, 1986, Bethesda, Maryland 20814. SAR is a measure of the rate of energy absorption due to exposure to an RF transmitting source. SAR values have been related to threshold levels for potential biological hazards. The criteria to be used are specified in paragraphs (d)(1) and (d)(2) of this section and shall apply for portable devices transmitting in the frequency range from 100 kHz to 6 GHz. Portable devices that transmit at frequencies above 6 GHz are to be evaluated in terms of the MPE limits specified in § 1.1310 of this chapter. Measurements and calculations to demonstrate compliance with MPE field strength or power density limits for devices operating above 6 GHz should be made at a minimum distance of 5 cm from the radiating source.

(1) Limits for Occupational/Controlled exposure: 0.4 W/kg as averaged over the whole-body and spatial peak SAR not exceeding 8 W/kg as averaged over any 1 gram of tissue (defined as a tissue volume in the shape of a cube). Exceptions are the hands, wrists, feet and ankles where the spatial peak SAR shall not exceed 20 W/kg, as

averaged over an 10 grams of tissue (defined as a tissue volume in the shape of a cube). Occupational/Controlled limits apply when persons are exposed as a consequence of their employment provided these persons are fully aware of and exercise control over their exposure. Awareness of exposure can be accomplished by use of warning labels or by specific training or education through appropriate means, such as an RF safety program in a work environment.

(2) Limits for General Population/Uncontrolled exposure: 0.08 W/kg as averaged over the whole-body and spatial peak SAR not exceeding 1.6 W/kg as averaged over any 1 gram of tissue (defined as a tissue volume in the shape of a cube). Exceptions are the hands, wrists, feet and ankles where the spatial peak SAR shall not exceed 4 W/kg, as averaged over any 10 grams of tissue (defined as a tissue volume in the shape of a cube). General Population/Uncontrolled limits apply when the general public may be exposed, or when persons that are exposed as a consequence of their employment may not be fully aware of the potential for exposure or do not exercise control over their exposure. Warning labels placed on consumer devices such as cellular telephones will not be sufficient reason to allow these devices to be evaluated subject to limits for occupational/controlled exposure in paragraph (d)(1) of this section.(Table .4)

Human Exposure	Uncontrolled Environment General Population	Controlled Environment Occupational
Spatial Peak SAR (Brain)	1.60 m W/g	8.00 m W/g
Spatial Average SAR (Whole Body)	0.08 m W/g	0.40 m W/g
Spatial Peak SAR (Hands/Feet/Ankle/Wrist)	4.00 m W/g	20.00 m W/g

Table .4 RF exposure limits

Notes:

1. Uncontrolled environments are defined as locations where there is potential exposure of individuals who have no knowledge or control of their potential exposure.
2. Controlled environments are defined as locations where there is potential exposure of individuals who have knowledge of their potential exposure and can exercise control over their exposure.

2. Instruments List

Manufacturer	Device	Type	Serial number	Date of last calibration
Schmid & Partner Engineering AG	Dosimetric E-Field Probe	ET3DV6	1759	Mar.07.2003
Schmid & Partner Engineering AG	2450 MHz System Validation Dipole	D2450V2	727	Mar.05. 2003
Schmid & Partner Engineering AG	Data acquisition Electronics	DAE3	393	Jan.08.2004
Schmid & Partner Engineering AG	Software	DASY 4 V4.1c Build 47	---	Calibration isn't necessary
Schmid & Partner Engineering AG	Phantom	SAM	---	Calibration isn't necessary
Agilent	Network Analyzer	8714ET	US41442815	Jun.16.2003
Agilent	Dielectric Probe Kit	85070D	US01440168	Jun.20.2003

3.Summary of Results

The measurement results were obtained with the EUT tested in the conditions described in this report. Detailed measurement data and plots showing the maximum SAR location of the EUT are reported in 4.Measurements

802.11 b

Main Antenna SAR MEASUREMENT			
Crest factor : 1 (Duty cycle: 100%)			
Depth of Liquid : 15.0 cm			

EUT Configuration 1

EUT Set-up conditions		Frequency		Conducted Output Power	Liquid Temp[°C]	1g SAR (W/kg)	Limit (W/kg)
Sep. [cm]	Antenna Position	Channel	MHz				
0.0	Left Side	1	2412	20.36	21.9	0.47	1.6
		6	2437	19.92	21.8	0.453	
		11	2462	19.57	21.9	0.45	

EUT Configuration 2

EUT Set-up conditions		Frequency		Conducted Output Power	Liquid Temp[°C]	1g SAR (W/kg)	Limit (W/kg)
Sep. [cm]	Antenna Position	Channel	MHz				
0.0	Back side	1	2412	20.36	21.9	0.38	1.6
		6	2437	19.92	22.0	0.387	
		11	2462	19.57	21.8	0.39	

EUT Configuration 3

EUT Set-up conditions		Frequency		Conducted Output Power	Liquid Temp[°C]	1g SAR (W/kg)	Limit (W/kg)
Sep. [cm]	Antenna Position	Channel	MHz				
0.0	LCD panel	1	2412	20.36	22.0	1.17	1.6
		6	2437	19.92	22.0	1.19	
		11	2462	19.57	21.9	1.2	

Measured Mixture Type	Body	Relative Humidity	50%
Ambient Temperature	22.1°C	Fluid Temperature	21.9°C

The measurement results were obtained with the EUT tested in the conditions described in this report. Detailed measurement data and plots showing the maximum SAR location of the EUT are reported in 4.Measurements

802.11 b

Auxiliary Antenna SAR MEASUREMENT

Crest factor : 1 (Duty cycle: 100%) Depth of Liquid : 15.0 cm

EUT Configuration 4

EUT Set-up conditions		Frequency		Conducted Output Power	Liquid Temp[°C]	1g SAR (W/kg)	Limit (W/kg)
Sep. [cm]	Antenna Position	Channel	MHz				
0.0	Right side	1	2412	20.36	22.0	0.144	1.6
		6	2437	19.92	22.0	0.105	
		11	2462	19.57	22.1	0.136	

EUT Configuration 5

EUT Set-up conditions		Frequency		Conducted Output Power	Liquid Temp[°C]	1g SAR (W/kg)	Limit (W/kg)
Sep. [cm]	Antenna Position	Channel	MHz				
0.0	Back side	1	2412	20.36	21.9	0.323	1.6
		6	2437	19.92	21.9	0.247	
		11	2462	19.57	22.0	0.244	

EUT Configuration 6

EUT Set-up conditions		Frequency		Conducted Output Power	Liquid Temp[°C]	1g SAR (W/kg)	Limit (W/kg)
Sep. [cm]	Antenna Position	Channel	MHz				
0.0	LCD panel	1	2412	20.36	22.0	0.527	1.6
		6	2437	19.92	21.9	0.412	
		11	2462	19.57	21.9	0.444	

Measured Mixture Type	Body	Relative Humidity	50%
Ambient Temperature	22.1°C	Fluid Temperature	21.9°C

The measurement results were obtained with the EUT tested in the conditions described in this report. Detailed measurement data and plots showing the maximum SAR location of the EUT are reported in 4.Measurements

802.11 g

Main Antenna SAR MEASUREMENT			
Crest factor : 1 (Duty cycle: 100%)		Depth of Liquid : 15.0 cm	

EUT Configuration 1

EUT Set-up conditions		Frequency		Conducted Output Power	Liquid Temp[°C]	1g SAR (W/kg)	Limit (W/kg)
Sep. [cm]	Antenna Position	Channel	MHz				
0.0	Left Side	1	2412	18.02	21.9	0.243	1.6
		6	2437	17.68	21.8	0.246	
		11	2462	17.46	21.9	0.251	

EUT Configuration 2

EUT Set-up conditions		Frequency		Conducted Output Power	Liquid Temp[°C]	1g SAR (W/kg)	Limit (W/kg)
Sep. [cm]	Antenna Position	Channel	MHz				
0.0	Back side	1	2412	18.02	21.9	0.218	1.6
		6	2437	17.68	22.0	0.228	
		11	2462	17.46	21.8	0.237	

EUT Configuration 3

EUT Set-up conditions		Frequency		Conducted Output Power	Liquid Temp[°C]	1g SAR (W/kg)	Limit (W/kg)
Sep. [cm]	Antenna Position	Channel	MHz				
0.0	LCD panel	1	2412	18.02	22.0	0.646	1.6
		6	2437	17.68	22.0	0.65	
		11	2462	17.46	21.9	0.665	

Measured Mixture Type	Body	Relative Humidity	50%
Ambient Temperature	22.1°C	Fluid Temperature	21.9°C

The measurement results were obtained with the EUT tested in the conditions described in this report. Detailed measurement data and plots showing the maximum SAR location of the EUT are reported in 4.Measurements

802.11 g

Auxiliary Antenna SAR MEASUREMENT

Crest factor : 1 (Duty cycle: 100%)

Depth of Liquid : 15.0 cm

EUT Configuration 4

EUT Set-up conditions		Frequency		Conducted Output Power	Liquid Temp[°C]	1g SAR (W/kg)	Limit (W/kg)
Sep. [cm]	Antenna Position	Channel	MHz				
0.0	Right side	1	2412	18.02	22.0	0.0724	1.6
		6	2437	17.68	22.0	0.0631	
		11	2462	17.46	22.1	0.0738	

EUT Configuration 5

EUT Set-up conditions		Frequency		Conducted Output Power	Liquid Temp[°C]	1g SAR (W/kg)	Limit (W/kg)
Sep. [cm]	Antenna Position	Channel	MHz				
0.0	Back side	1	2412	18.02	21.9	0.173	1.6
		6	2437	17.68	21.9	0.148	
		11	2462	17.46	22.0	0.143	

EUT Configuration 6

EUT Set-up conditions		Frequency		Conducted Output Power	Liquid Temp[°C]	1g SAR (W/kg)	Limit (W/kg)
Sep. [cm]	Antenna Position	Channel	MHz				
0.0	LCD panel	1	2412	18.02	22.0	0.25	1.6
		6	2437	17.68	21.9	0.22	
		11	2462	17.46	21.9	0.253	

Measured Mixture Type	Body	Relative Humidity	50%
Ambient Temperature	22.1°C	Fluid Temperature	21.9°C

4. Measurements

Left Side position, lowest channel

Date/Time: 02/26/04 15:07:33

DUT: Wireless LAN 802.11b; Type: Mini PCI;
Program: Notebook

Communication System: Wireless LAN; Frequency: 2412 MHz; Duty Cycle: 1:1
Medium: M2450 ($\rho = 2.00274$ mho/m, $\mu_r = 52.4877$, $\rho = 1000$ kg/m³)
Phantom section: Flat Section

DASY4 Configuration:

- Probe: ET3DV6 - SN1759; ConvF(4.5, 4.5, 4.5); Calibrated: 2003/3/7
- Sensor-Surface: 4mm (Mechanical And Optical Surface Detection)
- Electronics: DAE3 Sn393; Calibrated: 2004/1/8
- Phantom: SAM 12; Type: SAM 4.0; Serial: TP:1150
- Measurement SW: DASY4, V4.1 Build 47; Postprocessing SW: SEMCAD, V1.6 Build 115

Left Top/Area Scan (71x131x1): Measurement grid: dx=15mm, dy=15mm

Reference Value = 16.6 V/m

Power Drift = -1 dB

Maximum value of SAR = 0.502 mW/g

Left Top/Zoom Scan (7x7x7)/Cube 0: Measurement grid: dx=5mm, dy=5mm, dz=5mm

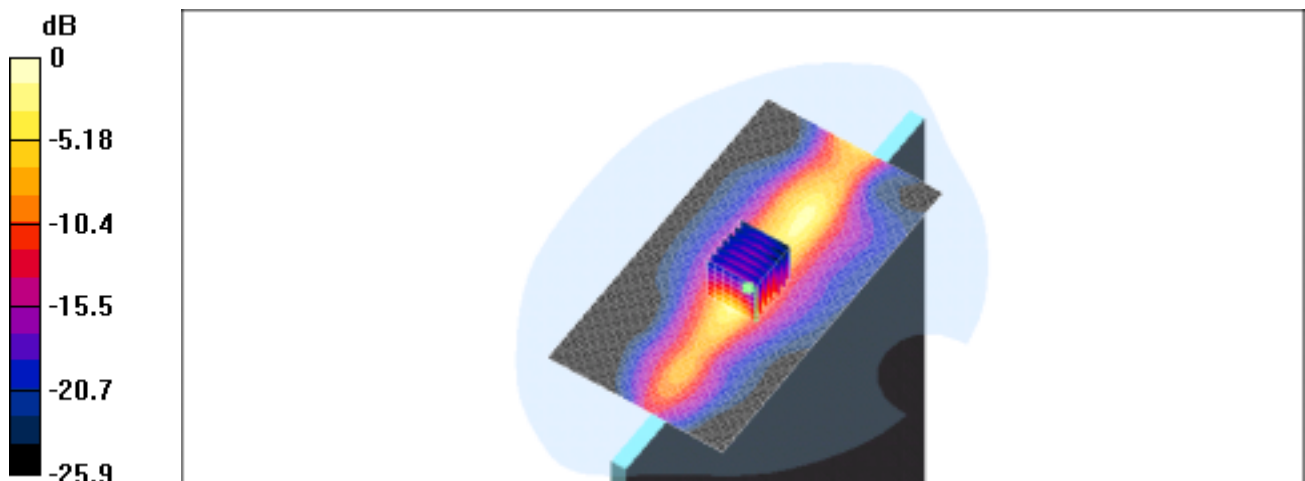
Peak SAR (extrapolated) = 1.49 W/kg

SAR(1 g) = 0.47 mW/g; SAR(10 g) = 0.164 mW/g

Reference Value = 16.6 V/m

Power Drift = -1 dB

Maximum value of SAR = 0.543 mW/g



0 dB = 0.543mW/g

Left Side position, middle channel

Date/Time: 02/26/04 15:55:36

DUT: Wireless LAN 802.11b; Type: Mini PCI;
Program: Notebook

Communication System: Wireless LAN; Frequency: 2437 MHz; Duty Cycle: 1:1
Medium: M2450 ($\sigma = 1.94852$ mho/m, $\epsilon_r = 52.8422$, $\rho = 1000$ kg/m³)
Phantom section: Flat Section

DASY4 Configuration:

- Probe: ET3DV6 - SN1759; ConvF(4.5, 4.5, 4.5); Calibrated: 2003/3/7
- Sensor-Surface: 4mm (Mechanical And Optical Surface Detection)
- Electronics: DAE3 Sn393; Calibrated: 2004/1/8
- Phantom: SAM 12; Type: SAM 4.0; Serial: TP:1150
- Measurement SW: DASY4, V4.1 Build 47; Postprocessing SW: SEMCAD, V1.6 Build 115

Left Top/Area Scan (71x131x1): Measurement grid: dx=15mm, dy=15mm

Reference Value = 15.2 V/m

Power Drift = -0.03 dB

Maximum value of SAR = 0.441 mW/g

Left Top/Zoom Scan (7x7x7)/Cube 0: Measurement grid: dx=5mm, dy=5mm, dz=5mm

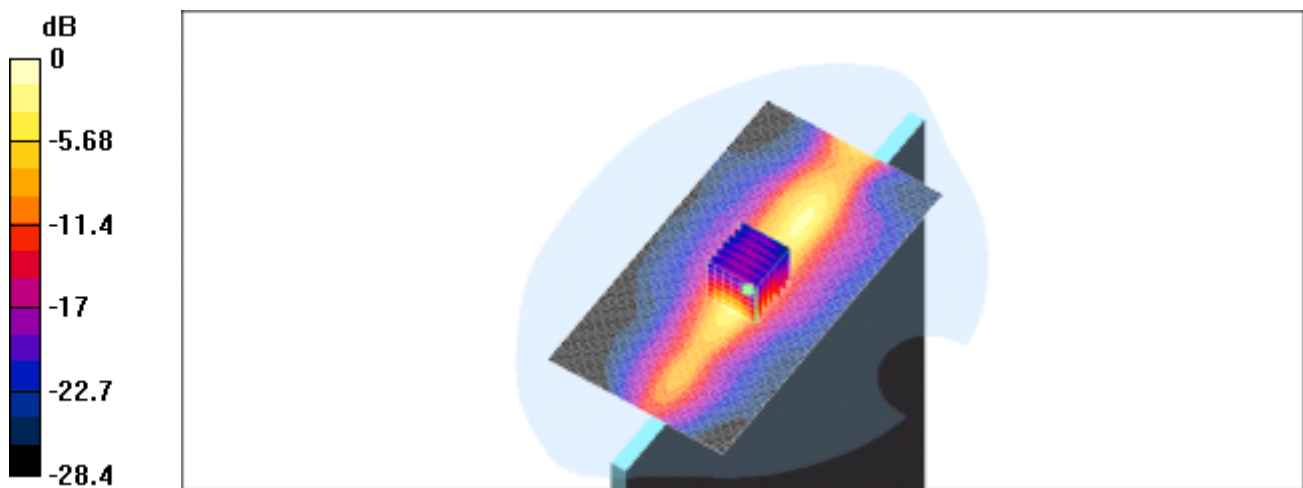
Peak SAR (extrapolated) = 1.45 W/kg

SAR(1 g) = 0.453 mW/g; SAR(10 g) = 0.156 mW/g

Reference Value = 15.2 V/m

Power Drift = -0.03 dB

Maximum value of SAR = 0.526 mW/g



Left Side position, highest channel

Date/Time: 02/26/04 16:39:31

DUT: Wireless LAN 802.11b; Type: Mini PCI;
Program: Notebook

Communication System: Wireless LAN; Frequency: 2462 MHz; Duty Cycle: 1:1
Medium: M2450 ($\epsilon = 1.89782$ mho/m, $\mu_r = 52.7702$, $\rho = 1000$ kg/m³)
Phantom section: Flat Section

DASY4 Configuration:

- Probe: ET3DV6 - SN1759; ConvF(4.5, 4.5, 4.5); Calibrated: 2003/3/7
- Sensor-Surface: 4mm (Mechanical And Optical Surface Detection)
- Electronics: DAE3 Sn393; Calibrated: 2004/1/8
- Phantom: SAM 12; Type: SAM 4.0; Serial: TP:1150
- Measurement SW: DASY4, V4.1 Build 47; Postprocessing SW: SEMCAD, V1.6 Build 115

Left Top/Area Scan (71x131x1): Measurement grid: dx=15mm, dy=15mm

Reference Value = 15.3 V/m

Power Drift = -0.09 dB

Maximum value of SAR = 0.433 mW/g

Left Top/Zoom Scan (7x7x7)/Cube 0: Measurement grid: dx=5mm, dy=5mm, dz=5mm

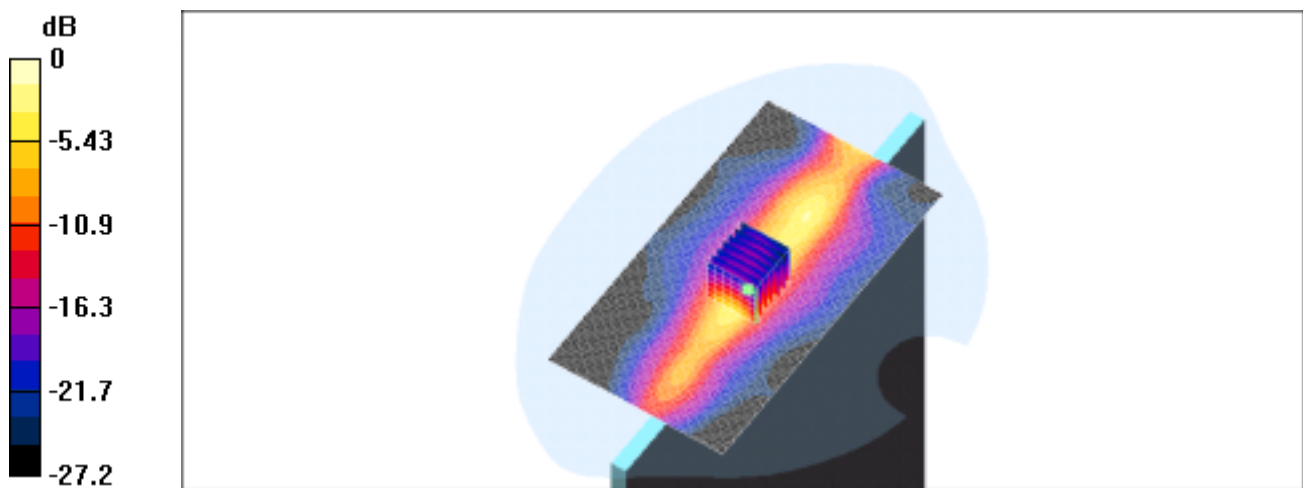
Peak SAR (extrapolated) = 1.44 W/kg

SAR(1 g) = 0.45 mW/g; SAR(10 g) = 0.153 mW/g

Reference Value = 15.3 V/m

Power Drift = -0.09 dB

Maximum value of SAR = 0.519 mW/g



0 dB = 0.519mW/g

Back of the LCD Panel position, lowest channel

Date/Time: 02/24/04
11:42:07

DUT: Wireless LAN 802.11b; Type: Mini PCI;
Program: Notebook

Communication System: Wireless LAN; Frequency: 2412 MHz; Duty Cycle: 1:1
Medium: M2450 ($\epsilon = 2.00274$ mho/m, $\mu_r = 52.4877$, $\rho = 1000$ kg/m³)
Phantom section: Flat Section

DASY4 Configuration:

- Probe: ET3DV6 - SN1759; ConvF(4.5, 4.5, 4.5); Calibrated: 2003/3/7
- Sensor-Surface: 4mm (Mechanical And Optical Surface Detection)
- Electronics: DAE3 Sn393; Calibrated: 2004/1/8
- Phantom: SAM 12; Type: SAM 4.0; Serial: TP:1150
- Measurement SW: DASY4, V4.1 Build 47; Postprocessing SW: SEMCAD, V1.6 Build 115

Left front/Area Scan (61x111x1): Measurement grid: dx=15mm, dy=15mm

Reference Value = 2.61 V/m

Power Drift = -0.2 dB

Maximum value of SAR = 0.445 mW/g

Left front/Zoom Scan (7x7x7)/Cube 0: Measurement grid: dx=5mm, dy=5mm, dz=5mm

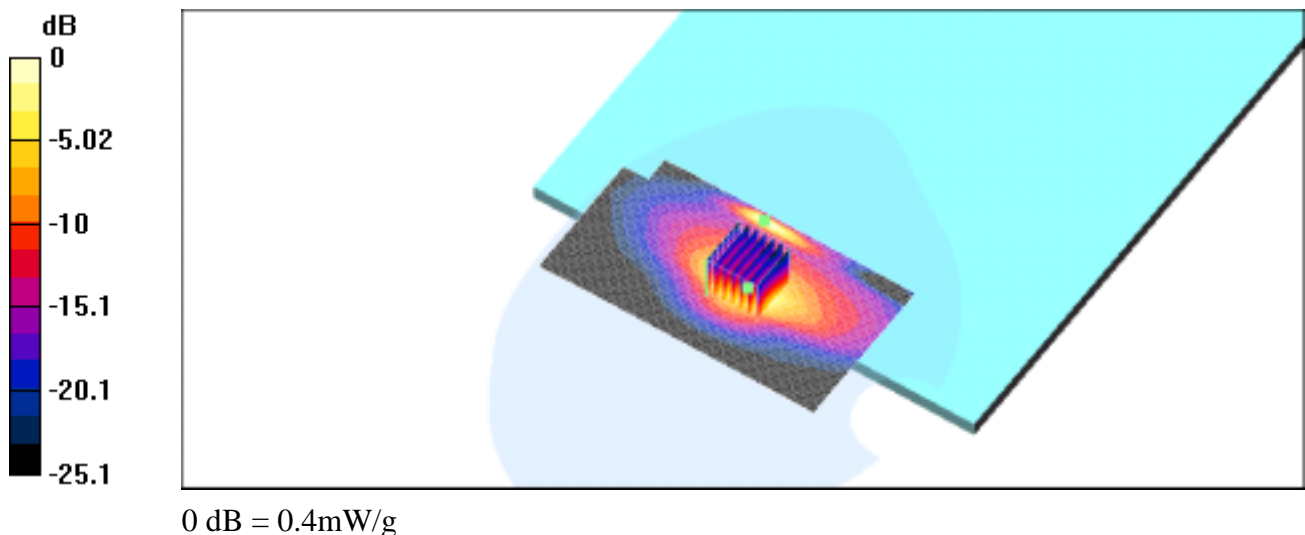
Peak SAR (extrapolated) = 1.11 W/kg

SAR(1 g) = 0.38 mW/g; SAR(10 g) = 0.146 mW/g

Reference Value = 2.61 V/m

Power Drift = -0.2 dB

Maximum value of SAR = 0.4 mW/g



Back of the LCD Panel position, middle channel

Date/Time: 02/24/04
13:08:35

DUT: Wireless LAN 802.11b; Type: Mini PCI;
Program: Notebook

Communication System: Wireless LAN; Frequency: 2437 MHz; Duty Cycle: 1:1
Medium: M2450 ($\epsilon = 1.94852$ mho/m, $\mu_r = 52.8422$, $\rho = 1000$ kg/m³)
Phantom section: Flat Section

DASY4 Configuration:

- Probe: ET3DV6 - SN1759; ConvF(4.5, 4.5, 4.5); Calibrated: 2003/3/7
- Sensor-Surface: 4mm (Mechanical And Optical Surface Detection)
- Electronics: DAE3 Sn393; Calibrated: 2004/1/8
- Phantom: SAM 12; Type: SAM 4.0; Serial: TP:1150
- Measurement SW: DASY4, V4.1 Build 47; Postprocessing SW: SEMCAD, V1.6 Build 115

Left front/Area Scan (61x111x1): Measurement grid: dx=15mm, dy=15mm

Reference Value = 2.57 V/m

Power Drift = -0.08 dB

Maximum value of SAR = 0.456 mW/g

Left front/Zoom Scan (7x7x7)/Cube 0: Measurement grid: dx=5mm, dy=5mm, dz=5mm

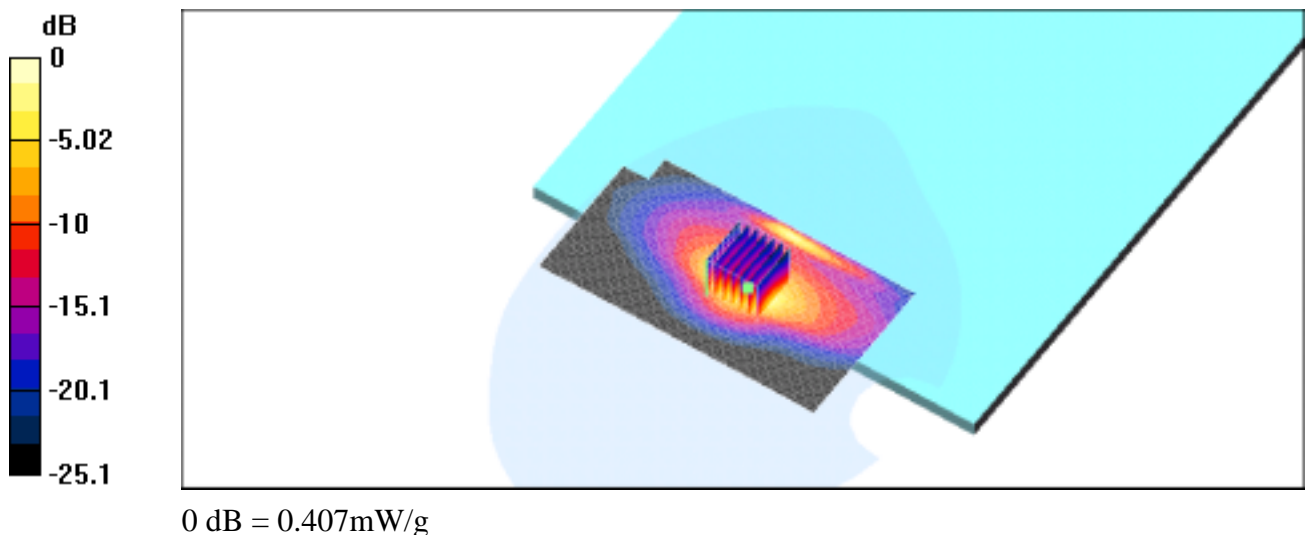
Peak SAR (extrapolated) = 1.14 W/kg

SAR(1 g) = 0.387 mW/g; SAR(10 g) = 0.148 mW/g

Reference Value = 2.57 V/m

Power Drift = -0.08 dB

Maximum value of SAR = 0.407 mW/g



Back of the LCD Panel position, highest channel

Date/Time: 02/24/04
13:38:54

DUT: Wireless LAN 802.11b; Type: Mini PCI;
Program: Notebook

Communication System: Wireless LAN; Frequency: 2462 MHz; Duty Cycle: 1:1
Medium: M2450 ($\epsilon = 1.89782$ mho/m, $\mu_r = 52.7702$, $\rho = 1000$ kg/m³)
Phantom section: Flat Section

DASY4 Configuration:

- Probe: ET3DV6 - SN1759; ConvF(4.5, 4.5, 4.5); Calibrated: 2003/3/7
- Sensor-Surface: 4mm (Mechanical And Optical Surface Detection)
- Electronics: DAE3 Sn393; Calibrated: 2004/1/8
- Phantom: SAM 12; Type: SAM 4.0; Serial: TP:1150
- Measurement SW: DASY4, V4.1 Build 47; Postprocessing SW: SEMCAD, V1.6 Build 115

Left front/Area Scan (61x111x1): Measurement grid: dx=15mm, dy=15mm

Reference Value = 2.5 V/m

Power Drift = 0.09 dB

Maximum value of SAR = 0.449 mW/g

Left front/Zoom Scan (7x7x7)/Cube 0: Measurement grid: dx=5mm, dy=5mm, dz=5mm

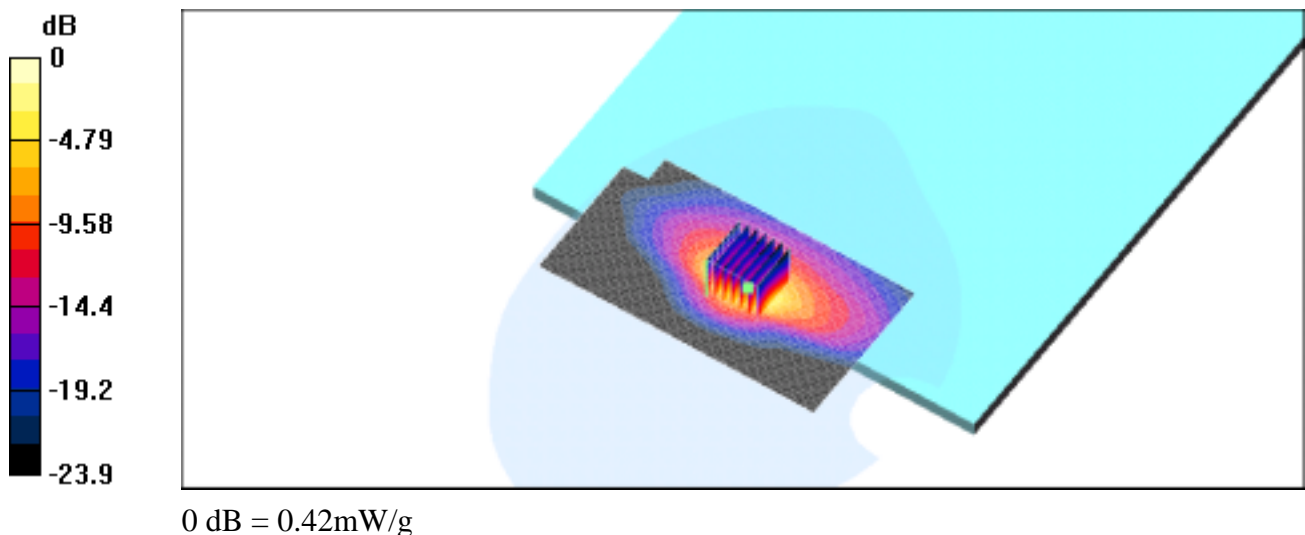
Peak SAR (extrapolated) = 1.15 W/kg

SAR(1 g) = 0.39 mW/g; SAR(10 g) = 0.149 mW/g

Reference Value = 2.5 V/m

Power Drift = 0.09 dB

Maximum value of SAR = 0.42 mW/g



LCD panel position, lowest channel

Date/Time: 02/26/04 20:42:51

DUT: Wireless LAN 802.11b; Type: Mini PCI;
Program: Notebook

Communication System: Wireless LAN; Frequency: 2412 MHz; Duty Cycle: 1:1
Medium: M2450 ($\epsilon = 2.00274$ mho/m, $\mu_r = 52.4877$, $\rho = 1000$ kg/m³)
Phantom section: Flat Section

DASY4 Configuration:

- Probe: ET3DV6 - SN1759; ConvF(4.5, 4.5, 4.5); Calibrated: 2003/3/7
- Sensor-Surface: 4mm (Mechanical And Optical Surface Detection)
- Electronics: DAE3 Sn393; Calibrated: 2004/1/8
- Phantom: SAM 12; Type: SAM 4.0; Serial: TP:1150
- Measurement SW: DASY4, V4.1 Build 47; Postprocessing SW: SEMCAD, V1.6 Build 115

Right inside/Area Scan (71x101x1): Measurement grid: dx=15mm, dy=15mm

Reference Value = 4.67 V/m

Power Drift = -0.2 dB

Maximum value of SAR = 1.72 mW/g

Right inside/Zoom Scan (7x7x7)/Cube 0: Measurement grid: dx=5mm, dy=5mm, dz=5mm

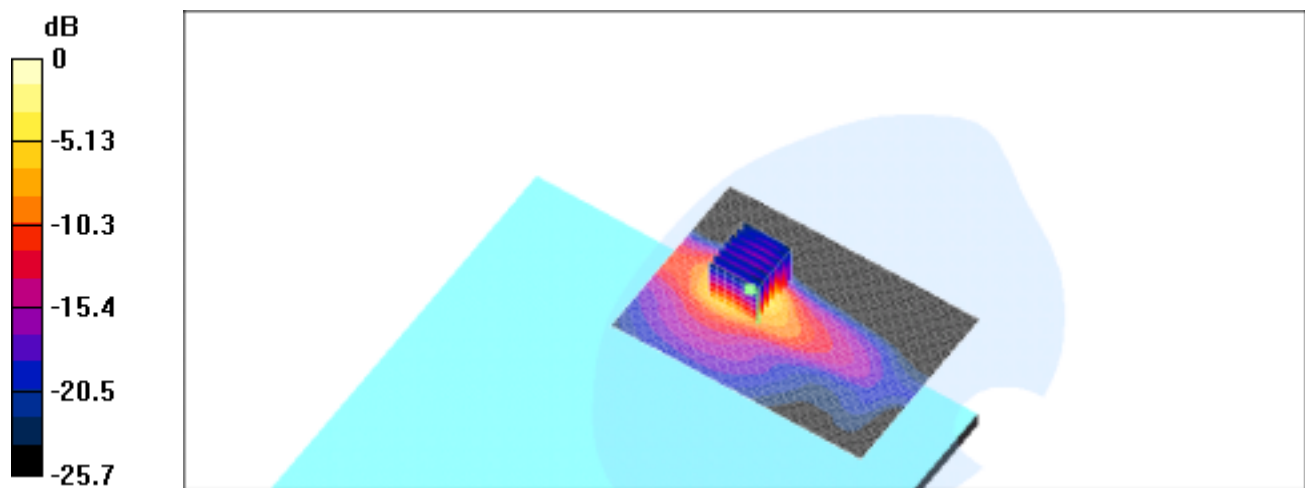
Peak SAR (extrapolated) = 3.7 W/kg

SAR(1 g) = 1.17 mW/g; SAR(10 g) = 0.419 mW/g

Reference Value = 4.67 V/m

Power Drift = -0.2 dB

Maximum value of SAR = 1.31 mW/g



0 dB = 1.31mW/g

LCD panel position, middle channel

Date/Time: 02/26/04 21:10:50

DUT: Wireless LAN 802.11b; Type: Mini PCI;
Program: Notebook

Communication System: Wireless LAN; Frequency: 2437 MHz; Duty Cycle: 1:1
Medium: M2450 ($\sigma = 1.94852$ mho/m, $\epsilon_r = 52.8422$, $\rho = 1000$ kg/m³)
Phantom section: Flat Section

DASY4 Configuration:

- Probe: ET3DV6 - SN1759; ConvF(4.5, 4.5, 4.5); Calibrated: 2003/3/7
- Sensor-Surface: 4mm (Mechanical And Optical Surface Detection)
- Electronics: DAE3 Sn393; Calibrated: 2004/1/8
- Phantom: SAM 12; Type: SAM 4.0; Serial: TP:1150
- Measurement SW: DASY4, V4.1 Build 47; Postprocessing SW: SEMCAD, V1.6 Build 115

Right inside/Area Scan (71x101x1): Measurement grid: dx=15mm, dy=15mm

Reference Value = 4.59 V/m

Power Drift = -0.04 dB

Maximum value of SAR = 1.7 mW/g

Right inside/Zoom Scan (7x7x7)/Cube 0: Measurement grid: dx=5mm, dy=5mm, dz=5mm

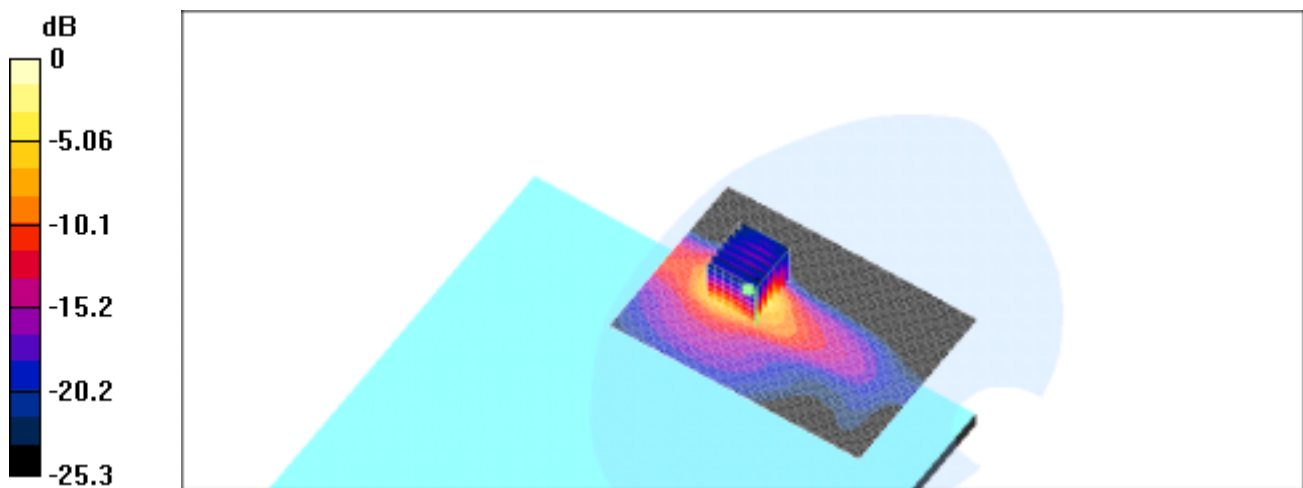
Peak SAR (extrapolated) = 3.72 W/kg

SAR(1 g) = 1.19 mW/g; SAR(10 g) = 0.426 mW/g

Reference Value = 4.59 V/m

Power Drift = -0.04 dB

Maximum value of SAR = 1.31 mW/g



0 dB = 1.31mW/g

LCD panel position, highest channel

Date/Time: 02/26/04 21:39:22

DUT: Wireless LAN 802.11b; Type: Mini PCI;
Program: Notebook

Communication System: Wireless LAN; Frequency: 2462 MHz; Duty Cycle: 1:1
Medium: M2450 ($\epsilon = 1.89782$ mho/m, $\mu_r = 52.7702$, $\rho = 1000$ kg/m³)
Phantom section: Flat Section

DASY4 Configuration:

- Probe: ET3DV6 - SN1759; ConvF(4.5, 4.5, 4.5); Calibrated: 2003/3/7
- Sensor-Surface: 4mm (Mechanical And Optical Surface Detection)
- Electronics: DAE3 Sn393; Calibrated: 2004/1/8
- Phantom: SAM 12; Type: SAM 4.0; Serial: TP:1150
- Measurement SW: DASY4, V4.1 Build 47; Postprocessing SW: SEMCAD, V1.6 Build 115

Right inside/Area Scan (71x101x1): Measurement grid: dx=15mm, dy=15mm

Reference Value = 4.53 V/m

Power Drift = 0.1 dB

Maximum value of SAR = 1.73 mW/g

Right inside/Zoom Scan (7x7x7)/Cube 0: Measurement grid: dx=5mm, dy=5mm, dz=5mm

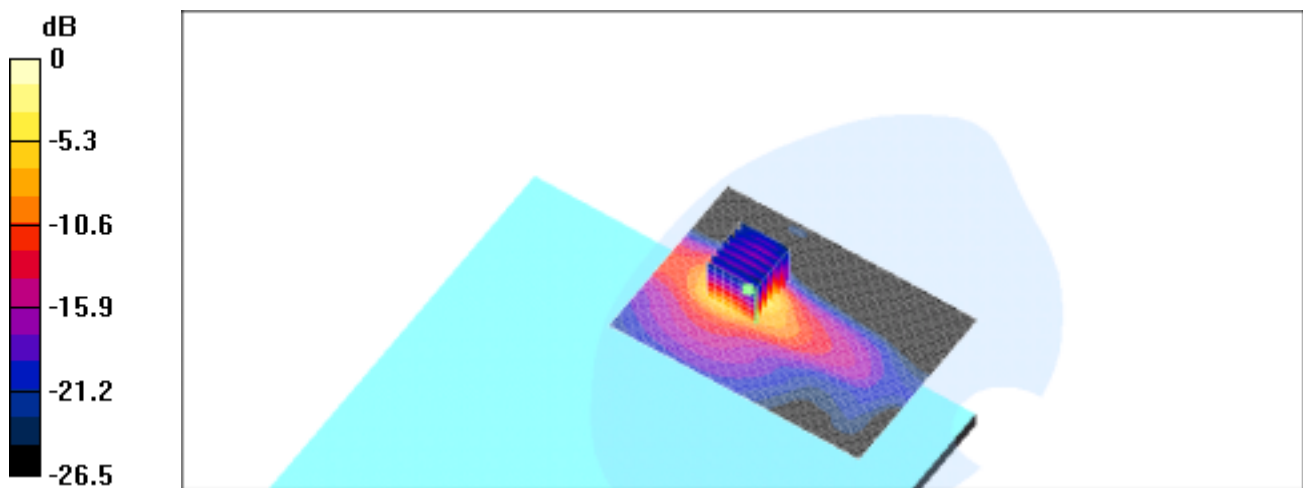
Peak SAR (extrapolated) = 3.74 W/kg

SAR(1 g) = 1.2 mW/g; SAR(10 g) = 0.429 mW/g

Reference Value = 4.53 V/m

Power Drift = 0.1 dB

Maximum value of SAR = 1.3 mW/g



0 dB = 1.3mW/g

Right Side position, lowest channel

Date/Time: 02/25/04 17:59:11

DUT: Wireless LAN 802.11b; Type: Mini PCI;
Program: Notebook

Communication System: Wireless LAN; Frequency: 2412 MHz; Duty Cycle: 1:1
Medium: M2450 ($\epsilon = 2.00274$ mho/m, $\mu_r = 52.4877$, $\rho = 1000$ kg/m³)
Phantom section: Flat Section

DASY4 Configuration:

- Probe: ET3DV6 - SN1759; ConvF(4.5, 4.5, 4.5); Calibrated: 2003/3/7
- Sensor-Surface: 4mm (Mechanical And Optical Surface Detection)
- Electronics: DAE3 Sn393; Calibrated: 2004/1/8
- Phantom: SAM 12; Type: SAM 4.0; Serial: TP:1150
- Measurement SW: DASY4, V4.1 Build 47; Postprocessing SW: SEMCAD, V1.6 Build 115

Right Top/Area Scan (71x131x1): Measurement grid: dx=15mm, dy=15mm

Reference Value = 10.8 V/m

Power Drift = -1 dB

Maximum value of SAR = 0.181 mW/g

Right Top/Zoom Scan (7x7x7)/Cube 0: Measurement grid: dx=5mm, dy=5mm, dz=5mm

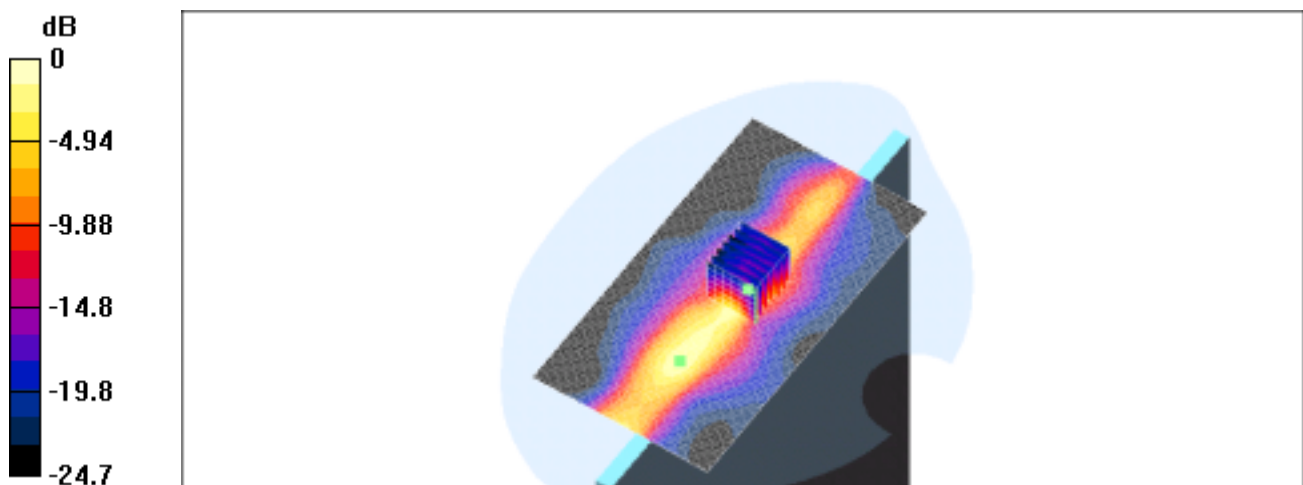
Peak SAR (extrapolated) = 0.444 W/kg

SAR(1 g) = 0.144 mW/g; SAR(10 g) = 0.0513 mW/g

Reference Value = 10.8 V/m

Power Drift = -1 dB

Maximum value of SAR = 0.176 mW/g



0 dB = 0.176mW/g

Right Side position, middle channel

Date/Time: 02/25/04 18:30:01

DUT: Wireless LAN 802.11b; Type: Mini PCI;
Program: Notebook

Communication System: Wireless LAN; Frequency: 2437 MHz; Duty Cycle: 1:1
Medium: M2450 ($\sigma = 1.94852$ mho/m, $\epsilon_r = 52.8422$, $\rho = 1000$ kg/m³)
Phantom section: Flat Section

DASY4 Configuration:

- Probe: ET3DV6 - SN1759; ConvF(4.5, 4.5, 4.5); Calibrated: 2003/3/7
- Sensor-Surface: 4mm (Mechanical And Optical Surface Detection)
- Electronics: DAE3 Sn393; Calibrated: 2004/1/8
- Phantom: SAM 12; Type: SAM 4.0; Serial: TP:1150
- Measurement SW: DASY4, V4.1 Build 47; Postprocessing SW: SEMCAD, V1.6 Build 115

Right Top/Area Scan (71x131x1): Measurement grid: dx=15mm, dy=15mm

Reference Value = 8.31 V/m

Power Drift = -0.06 dB

Maximum value of SAR = 0.122 mW/g

Right Top/Zoom Scan (7x7x7)/Cube 0: Measurement grid: dx=5mm, dy=5mm, dz=5mm

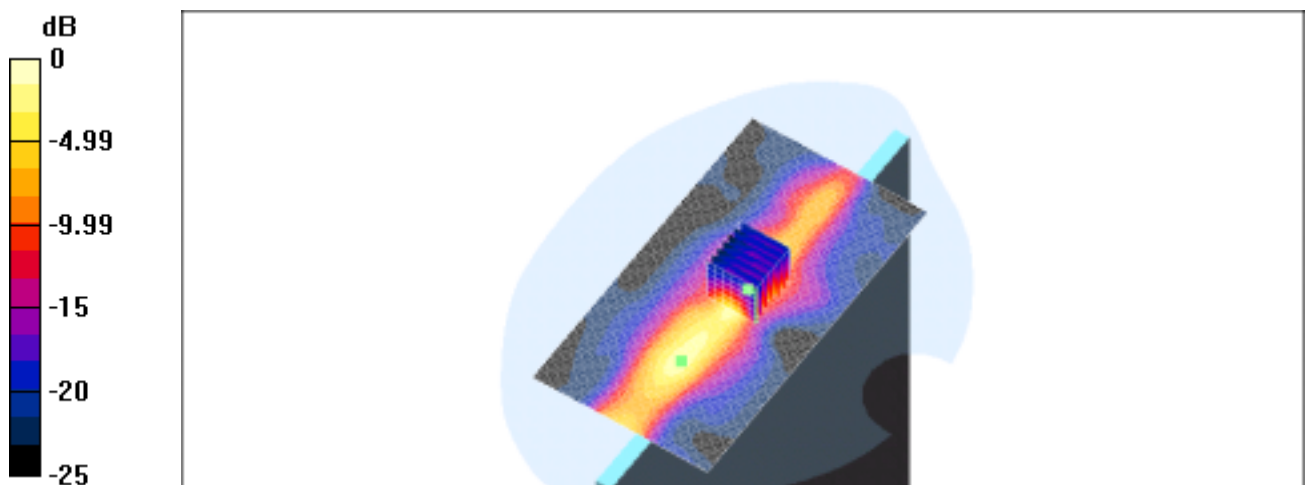
Peak SAR (extrapolated) = 0.329 W/kg

SAR(1 g) = 0.105 mW/g; SAR(10 g) = 0.0371 mW/g

Reference Value = 8.31 V/m

Power Drift = -0.06 dB

Maximum value of SAR = 0.128 mW/g



0 dB = 0.128mW/g

Right Side position, highest channel

Date/Time: 02/26/04 11:04:04

DUT: Wireless LAN 802.11b; Type: Mini PCI;
Program: Notebook

Communication System: Wireless LAN; Frequency: 2462 MHz; Duty Cycle: 1:1
Medium: M2450 ($\epsilon = 1.89782$ mho/m, $\mu = 52.7702$, $\rho = 1000$ kg/m³)
Phantom section: Flat Section

DASY4 Configuration:

- Probe: ET3DV6 - SN1759; ConvF(4.5, 4.5, 4.5); Calibrated: 2003/3/7
- Sensor-Surface: 4mm (Mechanical And Optical Surface Detection)
- Electronics: DAE3 Sn393; Calibrated: 2004/1/8
- Phantom: SAM 12; Type: SAM 4.0; Serial: TP:1150
- Measurement SW: DASY4, V4.1 Build 47; Postprocessing SW: SEMCAD, V1.6 Build 115

Right Top/Area Scan (71x131x1): Measurement grid: dx=15mm, dy=15mm

Reference Value = 10.6 V/m

Power Drift = -1 dB

Maximum value of SAR = 0.163 mW/g

Right Top/Zoom Scan (7x7x7)/Cube 0: Measurement grid: dx=5mm, dy=5mm, dz=5mm

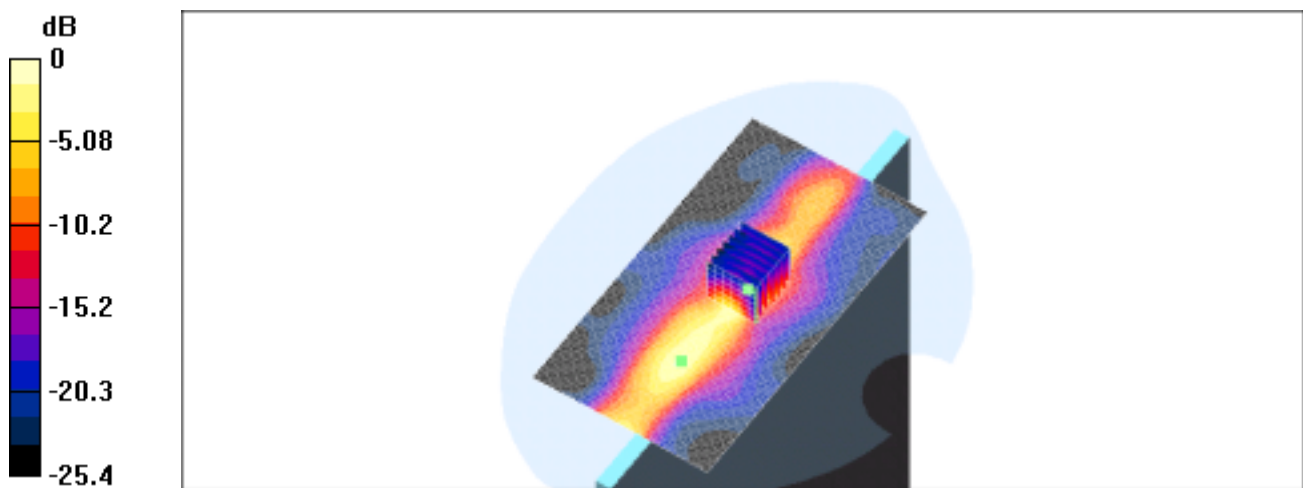
Peak SAR (extrapolated) = 0.414 W/kg

SAR(1 g) = 0.136 mW/g; SAR(10 g) = 0.0482 mW/g

Reference Value = 10.6 V/m

Power Drift = -1 dB

Maximum value of SAR = 0.164 mW/g



0 dB = 0.164mW/g

Back of the LCD Panel position, lowest channel

Date/Time: 02/25/04
12:07:01

DUT: Wireless LAN 802.11b; Type: Mini PCI;
Program: Notebook

Communication System: Wireless LAN; Frequency: 2412 MHz; Duty Cycle: 1:1
Medium: M2450 ($\epsilon = 2.00274$ mho/m, $\mu_r = 52.4877$, $\rho = 1000$ kg/m³)
Phantom section: Flat Section

DASY4 Configuration:

- Probe: ET3DV6 - SN1759; ConvF(4.5, 4.5, 4.5); Calibrated: 2003/3/7
- Sensor-Surface: 4mm (Mechanical And Optical Surface Detection)
- Electronics: DAE3 Sn393; Calibrated: 2004/1/8
- Phantom: SAM 12; Type: SAM 4.0; Serial: TP:1150
- Measurement SW: DASY4, V4.1 Build 47; Postprocessing SW: SEMCAD, V1.6 Build 115

Right front/Area Scan (71x101x1): Measurement grid: dx=15mm, dy=15mm

Reference Value = 2.44 V/m

Power Drift = -0.2 dB

Maximum value of SAR = 0.24 mW/g

Right front/Zoom Scan (7x7x7)/Cube 0: Measurement grid: dx=5mm, dy=5mm, dz=5mm

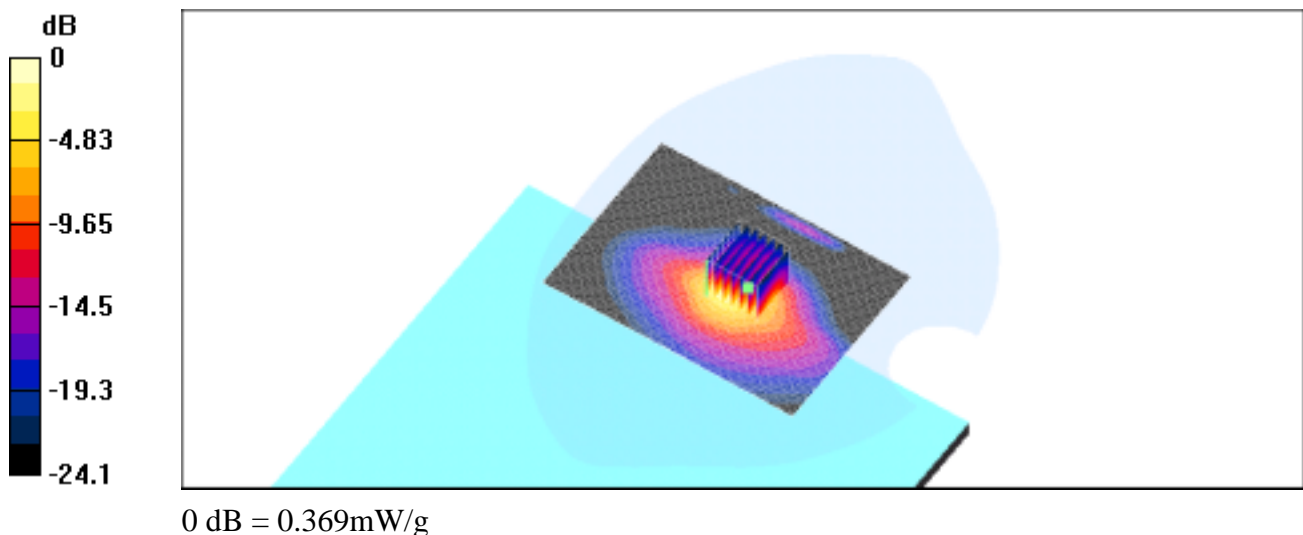
Peak SAR (extrapolated) = 0.925 W/kg

SAR(1 g) = 0.323 mW/g; SAR(10 g) = 0.123 mW/g

Reference Value = 2.44 V/m

Power Drift = -0.2 dB

Maximum value of SAR = 0.369 mW/g



Back of the LCD Panel position, middle channel

Date/Time: 02/25/04
13:17:46

DUT: Wireless LAN 802.11b; Type: Mini PCI;
Program: Notebook

Communication System: Wireless LAN; Frequency: 2437 MHz; Duty Cycle: 1:1
Medium: M2450 ($\epsilon = 1.94852$ mho/m, $\mu_r = 52.8422$, $\rho = 1000$ kg/m³)
Phantom section: Flat Section

DASY4 Configuration:

- Probe: ET3DV6 - SN1759; ConvF(4.5, 4.5, 4.5); Calibrated: 2003/3/7
- Sensor-Surface: 4mm (Mechanical And Optical Surface Detection)
- Electronics: DAE3 Sn393; Calibrated: 2004/1/8
- Phantom: SAM 12; Type: SAM 4.0; Serial: TP:1150
- Measurement SW: DASY4, V4.1 Build 47; Postprocessing SW: SEMCAD, V1.6 Build 115

Right front/Area Scan (71x101x1): Measurement grid: dx=15mm, dy=15mm

Reference Value = 2.13 V/m

Power Drift = -0.2 dB

Maximum value of SAR = 0.177 mW/g

Right front/Zoom Scan (7x7x7)/Cube 0: Measurement grid: dx=5mm, dy=5mm, dz=5mm

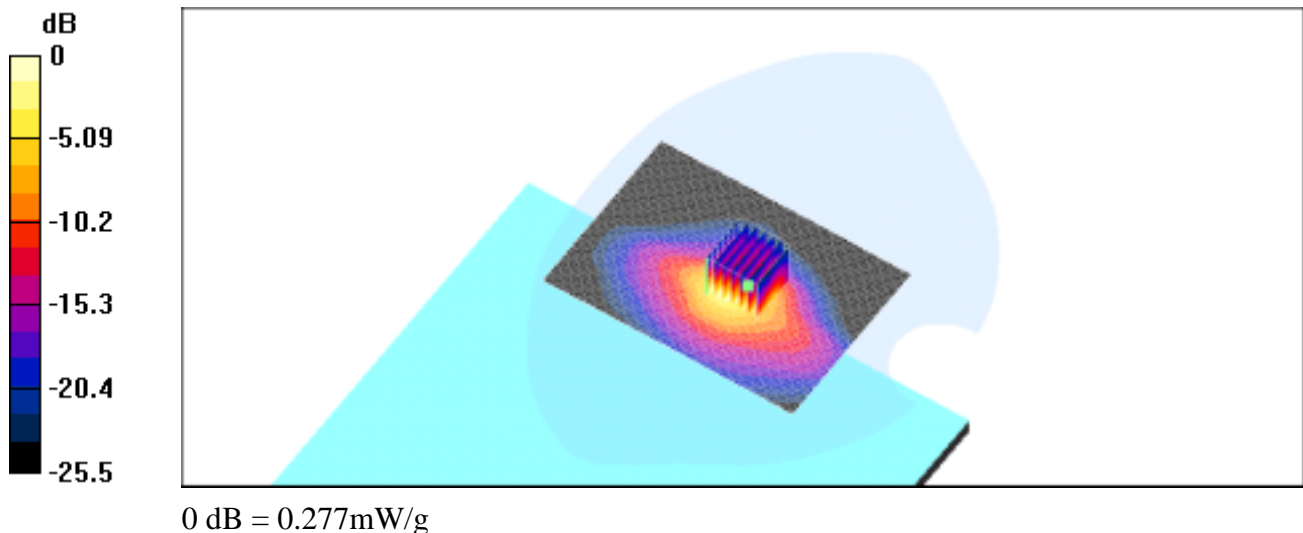
Peak SAR (extrapolated) = 0.723 W/kg

SAR(1 g) = 0.247 mW/g; SAR(10 g) = 0.0932 mW/g

Reference Value = 2.13 V/m

Power Drift = -0.2 dB

Maximum value of SAR = 0.277 mW/g



Back of the LCD Panel position, highest channel

Date/Time: 02/25/04
13:44:15

DUT: Wireless LAN 802.11b; Type: Mini PCI;
Program: Notebook

Communication System: Wireless LAN; Frequency: 2462 MHz; Duty Cycle: 1:1
Medium: M2450 ($\epsilon = 1.89782$ mho/m, $\mu_r = 52.7702$, $\rho = 1000$ kg/m³)
Phantom section: Flat Section

DASY4 Configuration:

- Probe: ET3DV6 - SN1759; ConvF(4.5, 4.5, 4.5); Calibrated: 2003/3/7
- Sensor-Surface: 4mm (Mechanical And Optical Surface Detection)
- Electronics: DAE3 Sn393; Calibrated: 2004/1/8
- Phantom: SAM 12; Type: SAM 4.0; Serial: TP:1150
- Measurement SW: DASY4, V4.1 Build 47; Postprocessing SW: SEMCAD, V1.6 Build 115

Right front/Area Scan (71x101x1): Measurement grid: dx=15mm, dy=15mm

Reference Value = 2.11 V/m

Power Drift = -0.3 dB

Maximum value of SAR = 0.173 mW/g

Right front/Zoom Scan (7x7x7)/Cube 0: Measurement grid: dx=5mm, dy=5mm, dz=5mm

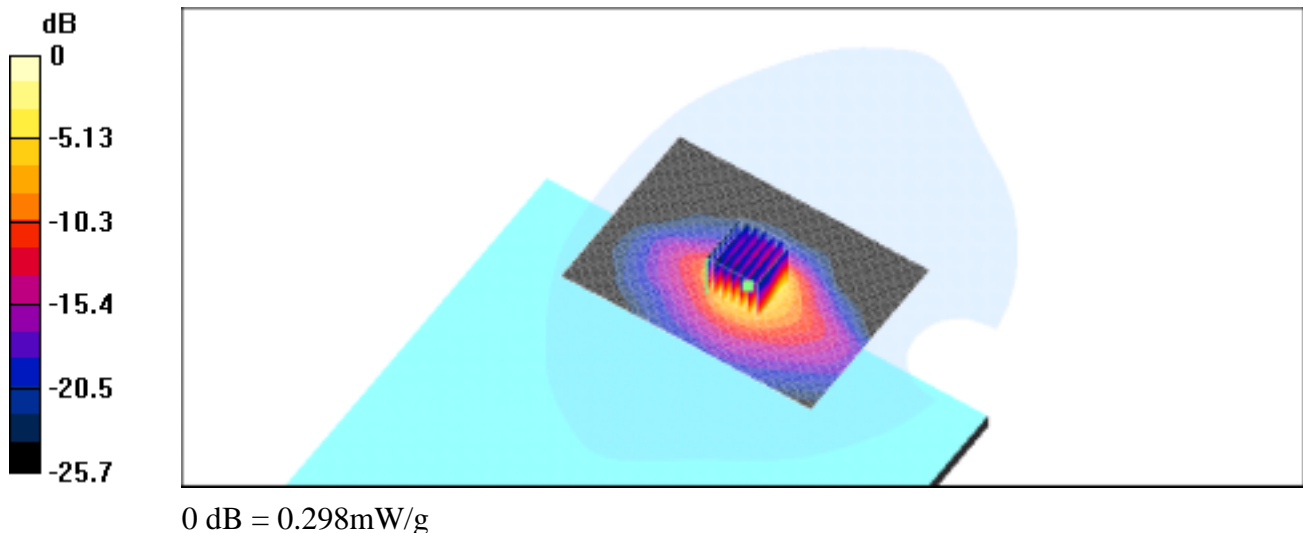
Peak SAR (extrapolated) = 0.702 W/kg

SAR(1 g) = 0.244 mW/g; SAR(10 g) = 0.0934 mW/g

Reference Value = 2.11 V/m

Power Drift = -0.3 dB

Maximum value of SAR = 0.298 mW/g



LCD panel position, lowest channel

Date/Time: 02/27/04 11:06:41

DUT: Wireless LAN 802.11b; Type: Mini PCI;
Program: Notebook

Communication System: Wireless LAN; Frequency: 2412 MHz; Duty Cycle: 1:1
Medium: M2450 ($\epsilon = 2.00274$ mho/m, $\mu_r = 52.4877$, $\rho = 1000$ kg/m³)
Phantom section: Flat Section

DASY4 Configuration:

- Probe: ET3DV6 - SN1759; ConvF(4.5, 4.5, 4.5); Calibrated: 2003/3/7
- Sensor-Surface: 4mm (Mechanical And Optical Surface Detection)
- Electronics: DAE3 Sn393; Calibrated: 2004/1/8
- Phantom: SAM 12; Type: SAM 4.0; Serial: TP:1150
- Measurement SW: DASY4, V4.1 Build 47; Postprocessing SW: SEMCAD, V1.6 Build 115

Right inside/Area Scan (71x101x1): Measurement grid: dx=15mm, dy=15mm

Reference Value = 3.99 V/m

Power Drift = -0.3 dB

Maximum value of SAR = 0.549 mW/g

Right inside/Zoom Scan (7x7x7)/Cube 0: Measurement grid: dx=5mm, dy=5mm, dz=5mm

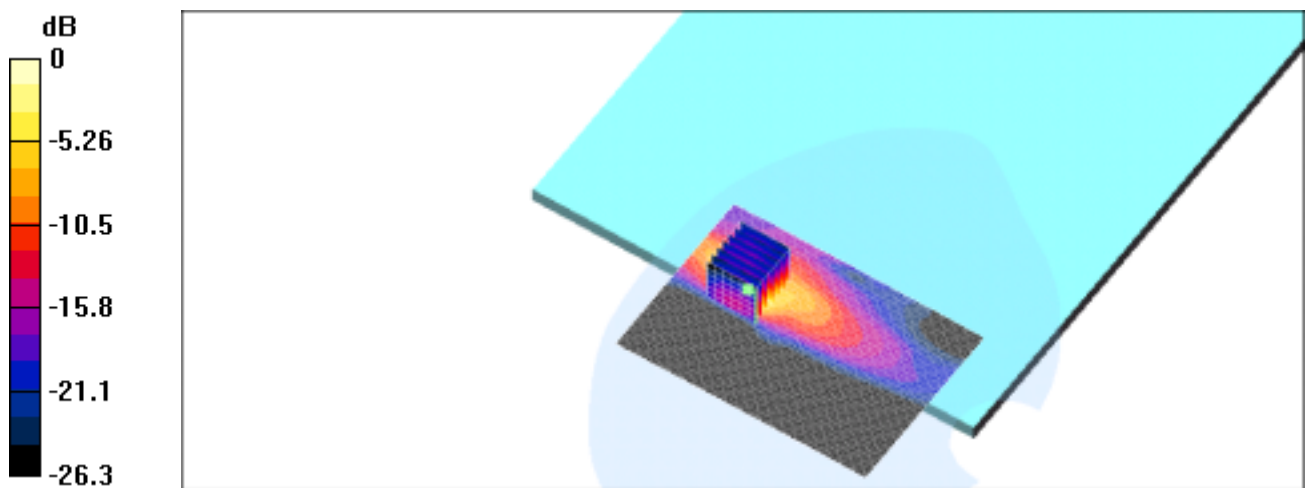
Peak SAR (extrapolated) = 1.76 W/kg

SAR(1 g) = 0.527 mW/g; SAR(10 g) = 0.18 mW/g

Reference Value = 3.99 V/m

Power Drift = -0.3 dB

Maximum value of SAR = 0.616 mW/g



0 dB = 0.616mW/g

LCD panel position, middle channel

Date/Time: 02/27/04 11:34:43

DUT: Wireless LAN 802.11b; Type: Mini PCI;
Program: Notebook

Communication System: Wireless LAN; Frequency: 2437 MHz; Duty Cycle: 1:1
Medium: M2450 ($\epsilon = 1.94852$ mho/m, $\mu_r = 52.8422$, $\rho = 1000$ kg/m³)
Phantom section: Flat Section

DASY4 Configuration:

- Probe: ET3DV6 - SN1759; ConvF(4.5, 4.5, 4.5); Calibrated: 2003/3/7
- Sensor-Surface: 4mm (Mechanical And Optical Surface Detection)
- Electronics: DAE3 Sn393; Calibrated: 2004/1/8
- Phantom: SAM 12; Type: SAM 4.0; Serial: TP:1150
- Measurement SW: DASY4, V4.1 Build 47; Postprocessing SW: SEMCAD, V1.6 Build 115

Right inside/Area Scan (71x101x1): Measurement grid: dx=15mm, dy=15mm

Reference Value = 3.48 V/m

Power Drift = -0.07 dB

Maximum value of SAR = 0.439 mW/g

Right inside/Zoom Scan (7x7x7)/Cube 0: Measurement grid: dx=5mm, dy=5mm, dz=5mm

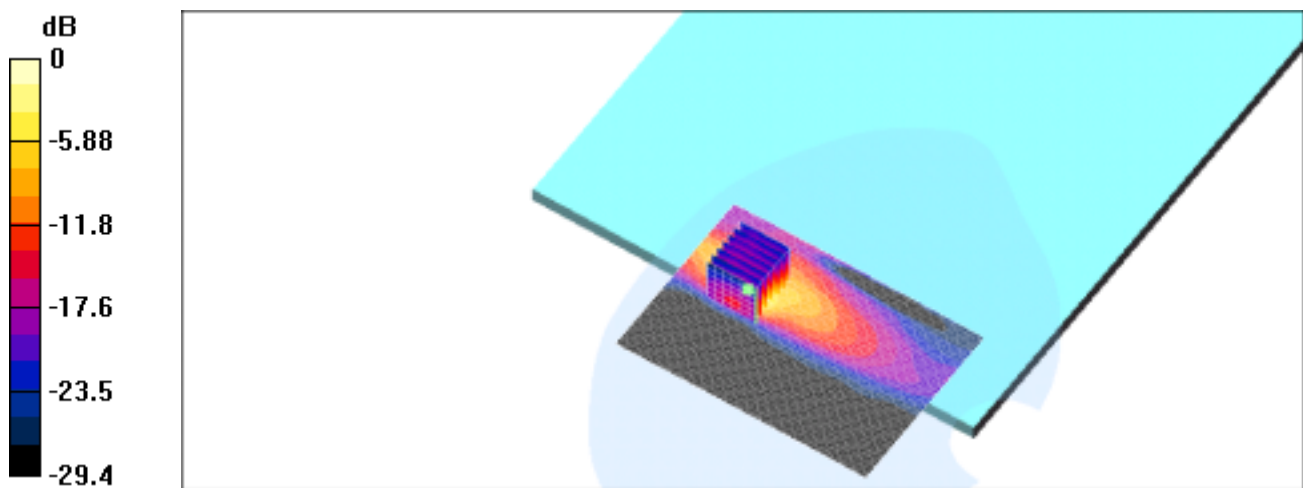
Peak SAR (extrapolated) = 1.39 W/kg

SAR(1 g) = 0.412 mW/g; SAR(10 g) = 0.14 mW/g

Reference Value = 3.48 V/m

Power Drift = -0.07 dB

Maximum value of SAR = 0.488 mW/g



0 dB = 0.488mW/g

LCD panel position, highest channel

Date/Time: 02/27/04 13:27:12

DUT: Wireless LAN 802.11b; Type: Mini PCI;
Program: Notebook

Communication System: Wireless LAN; Frequency: 2462 MHz; Duty Cycle: 1:1
Medium: M2450 ($\epsilon = 1.89782$ mho/m, $\mu_r = 52.7702$, $\rho = 1000$ kg/m³)
Phantom section: Flat Section

DASY4 Configuration:

- Probe: ET3DV6 - SN1759; ConvF(4.5, 4.5, 4.5); Calibrated: 2003/3/7
- Sensor-Surface: 4mm (Mechanical And Optical Surface Detection)
- Electronics: DAE3 Sn393; Calibrated: 2004/1/8
- Phantom: SAM 12; Type: SAM 4.0; Serial: TP:1150
- Measurement SW: DASY4, V4.1 Build 47; Postprocessing SW: SEMCAD, V1.6 Build 115

Right inside/Area Scan (71x101x1): Measurement grid: dx=15mm, dy=15mm

Reference Value = 3.62 V/m

Power Drift = 0.01 dB

Maximum value of SAR = 0.471 mW/g

Right inside/Zoom Scan (7x7x7)/Cube 0: Measurement grid: dx=5mm, dy=5mm, dz=5mm

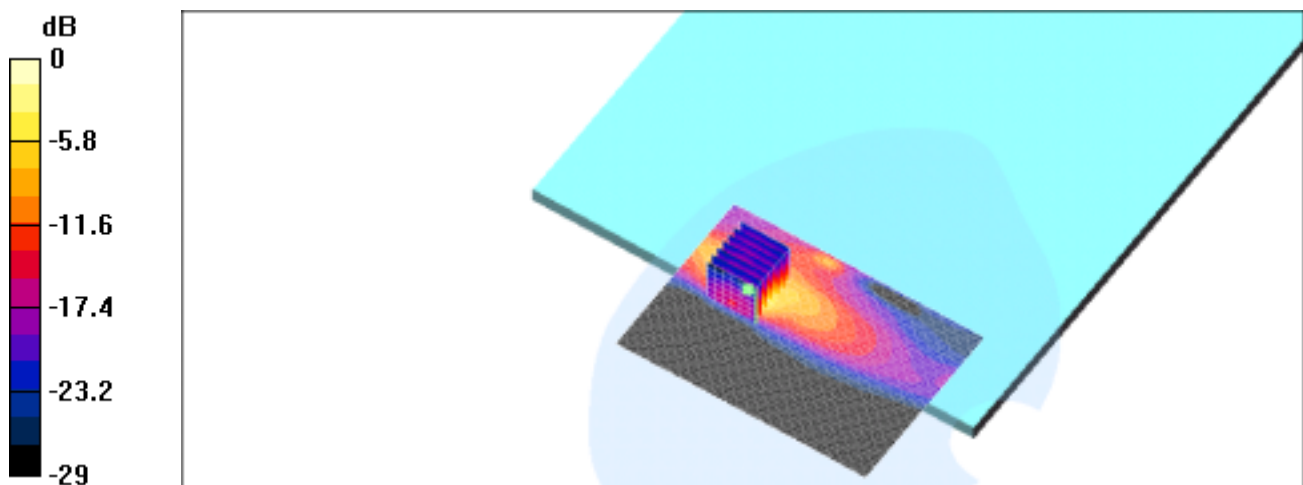
Peak SAR (extrapolated) = 1.49 W/kg

SAR(1 g) = 0.444 mW/g; SAR(10 g) = 0.151 mW/g

Reference Value = 3.62 V/m

Power Drift = 0.01 dB

Maximum value of SAR = 0.516 mW/g



0 dB = 0.516mW/g

Left Side position, lowest channel

Date/Time: 02/26/04 18:22:18

DUT: Wireless LAN 802.11g; Type: Mini PCI;
Program: Notebook

Communication System: Wireless LAN; Frequency: 2412 MHz; Duty Cycle: 1:1
Medium: M2450 ($\epsilon = 2.00274$ mho/m, $\mu_r = 52.4877$, $\rho = 1000$ kg/m³)
Phantom section: Flat Section

DASY4 Configuration:

- Probe: ET3DV6 - SN1759; ConvF(4.5, 4.5, 4.5); Calibrated: 2003/3/7
- Sensor-Surface: 4mm (Mechanical And Optical Surface Detection)
- Electronics: DAE3 Sn393; Calibrated: 2004/1/8
- Phantom: SAM 12; Type: SAM 4.0; Serial: TP:1150
- Measurement SW: DASY4, V4.1 Build 47; Postprocessing SW: SEMCAD, V1.6 Build 115

Left Top/Area Scan (71x131x1): Measurement grid: dx=15mm, dy=15mm

Reference Value = 10.9 V/m

Power Drift = -0.01 dB

Maximum value of SAR = 0.244 mW/g

Left Top/Zoom Scan (7x7x7)/Cube 0: Measurement grid: dx=5mm, dy=5mm, dz=5mm

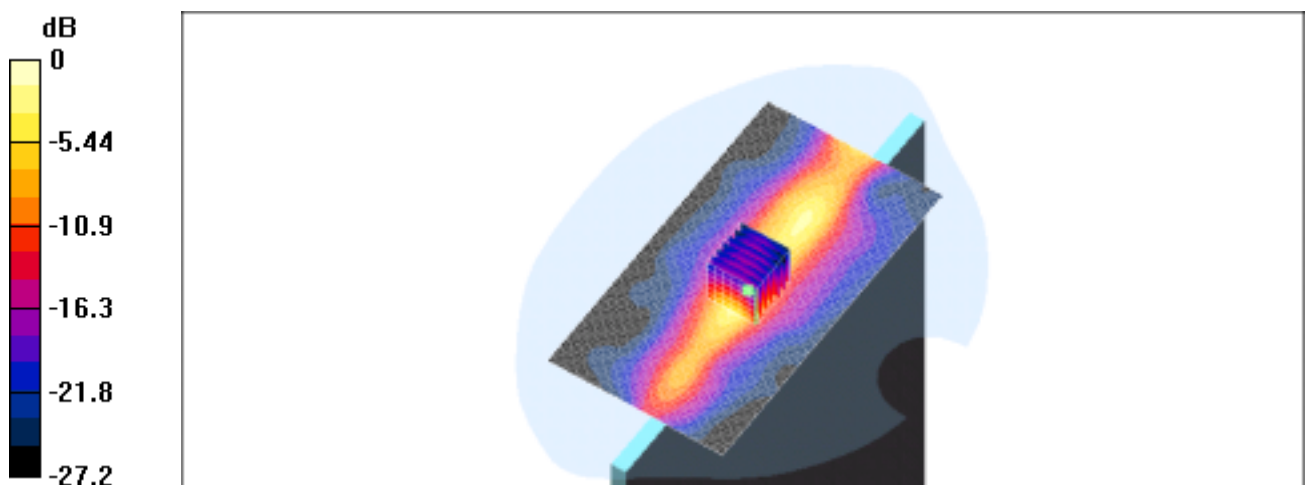
Peak SAR (extrapolated) = 0.793 W/kg

SAR(1 g) = 0.243 mW/g; SAR(10 g) = 0.0836 mW/g

Reference Value = 10.9 V/m

Power Drift = -0.01 dB

Maximum value of SAR = 0.281 mW/g



0 dB = 0.281mW/g

Left Side position, middle channel

DUT: Wireless LAN 802.11g; Type: Mini PCI;

Program: Notebook

Communication System: Wireless LAN; Frequency: 2437 MHz; Duty Cycle: 1:1

Medium: M2450 ($\epsilon = 1.94852$ mho/m, $\mu_r = 52.8422$, $\rho = 1000$ kg/m³)

Phantom section: Flat Section

DASY4 Configuration:

- Probe: ET3DV6 - SN1759; ConvF(4.5, 4.5, 4.5); Calibrated: 2003/3/7
- Sensor-Surface: 4mm (Mechanical And Optical Surface Detection)
- Electronics: DAE3 Sn393; Calibrated: 2004/1/8
- Phantom: SAM 12; Type: SAM 4.0; Serial: TP:1150
- Measurement SW: DASY4, V4.1 Build 47; Postprocessing SW: SEMCAD, V1.6 Build 115

Left Top/Area Scan (71x131x1): Measurement grid: dx=15mm, dy=15mm

Reference Value = 11.1 V/m

Power Drift = -0.03 dB

Maximum value of SAR = 0.238 mW/g

Left Top/Zoom Scan (7x7x7)/Cube 0: Measurement grid: dx=5mm, dy=5mm, dz=5mm

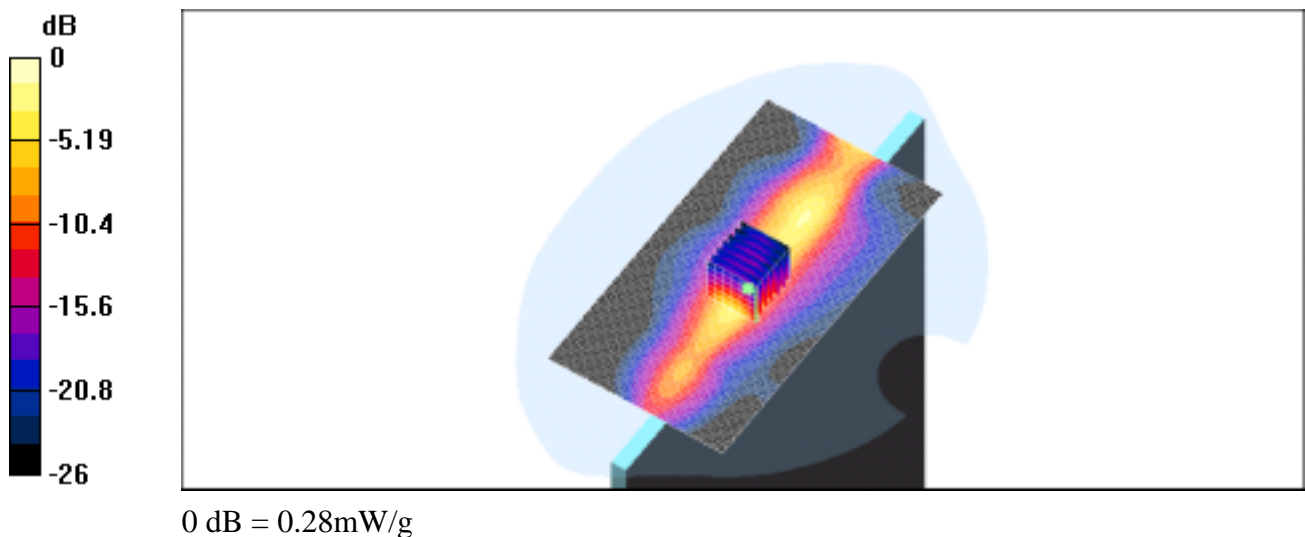
Peak SAR (extrapolated) = 0.787 W/kg

SAR(1 g) = 0.246 mW/g; SAR(10 g) = 0.0842 mW/g

Reference Value = 11.1 V/m

Power Drift = -0.03 dB

Maximum value of SAR = 0.28 mW/g



Left Side position, highest channel

Date/Time: 02/26/04 17:16:06

DUT: Wireless LAN 802.11g; Type: Mini PCI;

Program: Notebook

Communication System: Wireless LAN; Frequency: 2462 MHz; Duty Cycle: 1:1

Medium: M2450 ($\epsilon = 1.89782$ mho/m, $\mu_r = 52.7702$, $\rho = 1000$ kg/m³)

Phantom section: Flat Section

DASY4 Configuration:

- Probe: ET3DV6 - SN1759; ConvF(4.5, 4.5, 4.5); Calibrated: 2003/3/7
- Sensor-Surface: 4mm (Mechanical And Optical Surface Detection)
- Electronics: DAE3 Sn393; Calibrated: 2004/1/8
- Phantom: SAM 12; Type: SAM 4.0; Serial: TP:1150
- Measurement SW: DASY4, V4.1 Build 47; Postprocessing SW: SEMCAD, V1.6 Build 115

Left Top/Area Scan (71x131x1): Measurement grid: dx=15mm, dy=15mm

Reference Value = 11.5 V/m

Power Drift = -0.1 dB

Maximum value of SAR = 0.24 mW/g

Left Top/Zoom Scan (7x7x7)/Cube 0: Measurement grid: dx=5mm, dy=5mm, dz=5mm

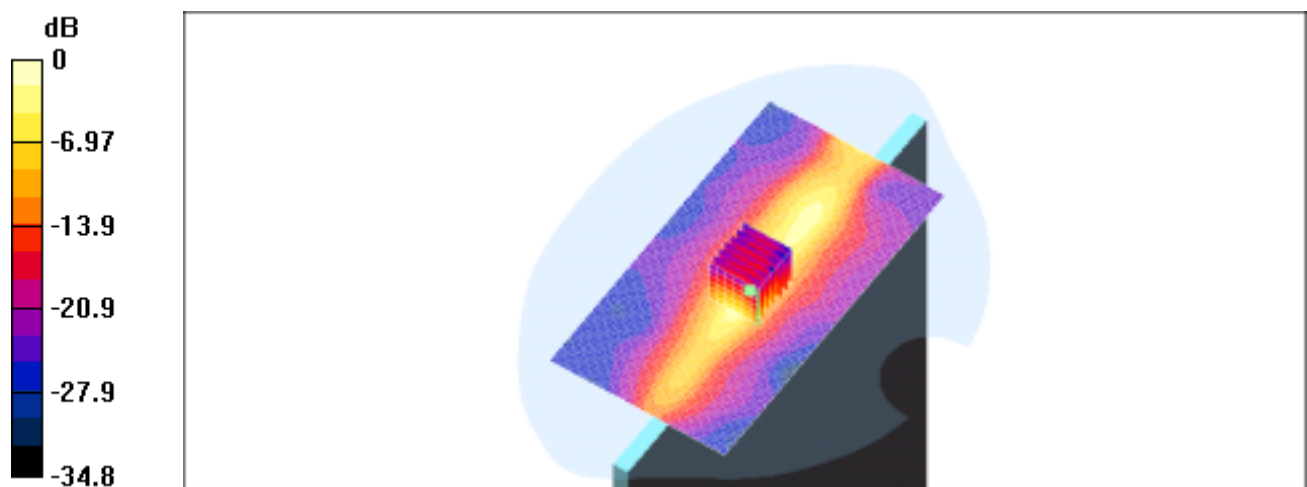
Peak SAR (extrapolated) = 0.811 W/kg

SAR(1 g) = 0.251 mW/g; SAR(10 g) = 0.0855 mW/g

Reference Value = 11.5 V/m

Power Drift = -0.1 dB

Maximum value of SAR = 0.286 mW/g



0 dB = 0.286mW/g

Back of the LCD Panel position, lowest channel

DUT: Wireless LAN 802.11g; Type: Mini PCI;

Program: Notebook

Communication System: Wireless LAN; Frequency: 2412 MHz; Duty Cycle: 1:1

Medium: M2450 ($\epsilon = 2.00274$ mho/m, $\mu_r = 52.4877$, $\rho = 1000$ kg/m³)

Phantom section: Flat Section

DASY4 Configuration:

- Probe: ET3DV6 - SN1759; ConvF(4.5, 4.5, 4.5); Calibrated: 2003/3/7
- Sensor-Surface: 4mm (Mechanical And Optical Surface Detection)
- Electronics: DAE3 Sn393; Calibrated: 2004/1/8
- Phantom: SAM 12; Type: SAM 4.0; Serial: TP:1150
- Measurement SW: DASY4, V4.1 Build 47; Postprocessing SW: SEMCAD, V1.6 Build 115

Left front/Area Scan (61x111x1): Measurement grid: dx=15mm, dy=15mm

Reference Value = 1.43 V/m

Power Drift = 0.5 dB

Maximum value of SAR = 0.274 mW/g

Left front/Zoom Scan (7x7x7)/Cube 0: Measurement grid: dx=5mm, dy=5mm, dz=5mm

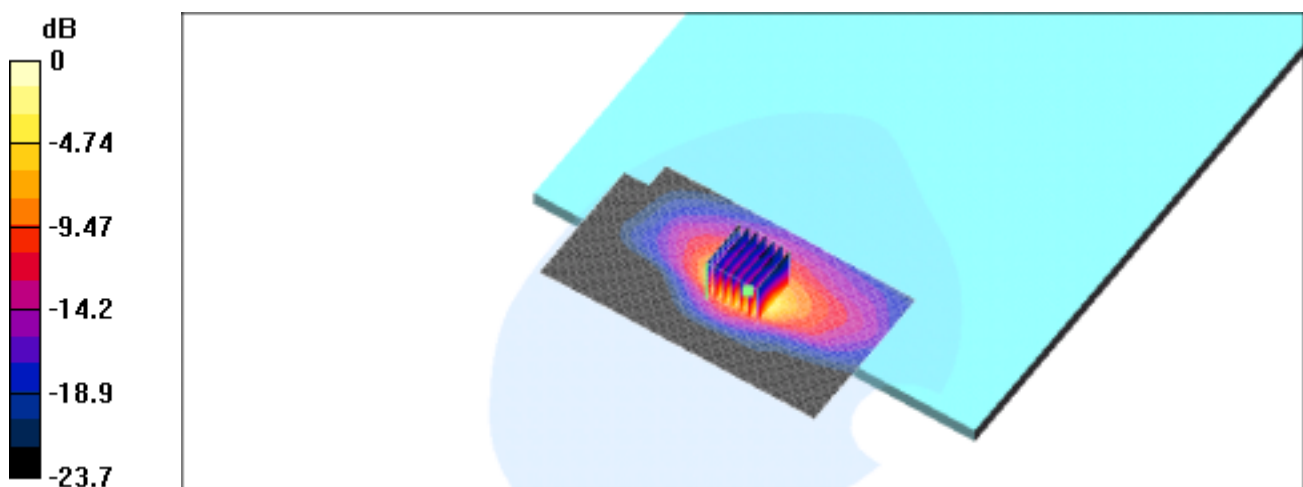
Peak SAR (extrapolated) = 0.634 W/kg

SAR(1 g) = 0.218 mW/g; SAR(10 g) = 0.084 mW/g

Reference Value = 1.43 V/m

Power Drift = 0.5 dB

Maximum value of SAR = 0.24 mW/g



0 dB = 0.24mW/g

Back of the LCD Panel position, middle channel

Date/Time: 02/24/04

15:28:58

DUT: Wireless LAN 802.11g; Type: Mini PCI;

Program: Notebook

Communication System: Wireless LAN; Frequency: 2437 MHz; Duty Cycle: 1:1

Medium: M2450 ($\epsilon = 1.94852$ mho/m, $\mu_r = 52.8422$, $\rho = 1000$ kg/m³)

Phantom section: Flat Section

DASY4 Configuration:

- Probe: ET3DV6 - SN1759; ConvF(4.5, 4.5, 4.5); Calibrated: 2003/3/7
- Sensor-Surface: 4mm (Mechanical And Optical Surface Detection)
- Electronics: DAE3 Sn393; Calibrated: 2004/1/8
- Phantom: SAM 12; Type: SAM 4.0; Serial: TP:1150
- Measurement SW: DASY4, V4.1 Build 47; Postprocessing SW: SEMCAD, V1.6 Build 115

Left front/Area Scan (61x111x1): Measurement grid: dx=15mm, dy=15mm

Reference Value = 1.5 V/m

Power Drift = 0.5 dB

Maximum value of SAR = 0.287 mW/g

Left front/Zoom Scan (7x7x7)/Cube 0: Measurement grid: dx=5mm, dy=5mm, dz=5mm

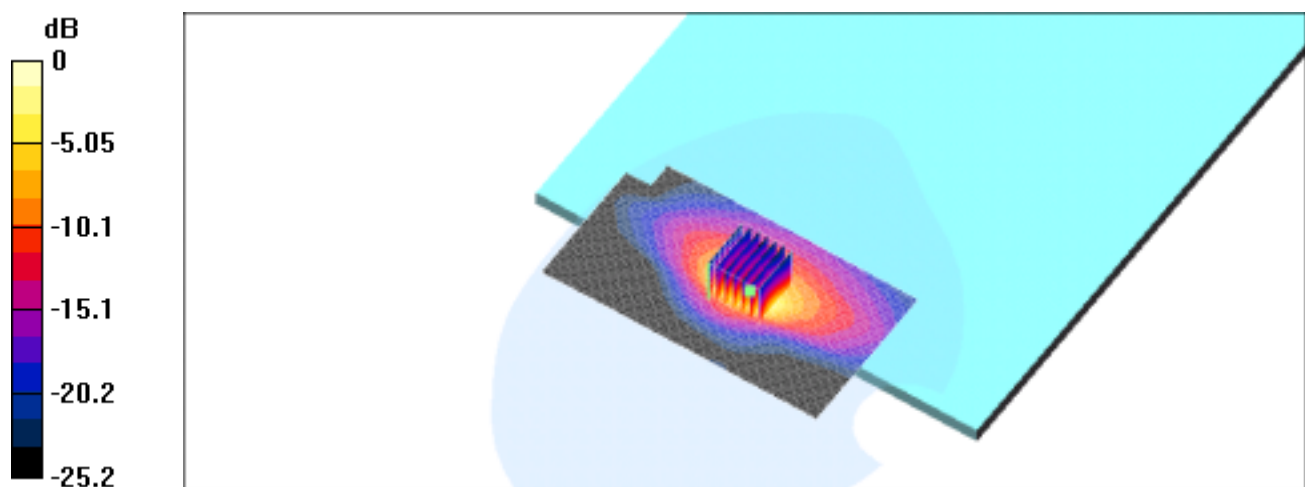
Peak SAR (extrapolated) = 0.661 W/kg

SAR(1 g) = 0.228 mW/g; SAR(10 g) = 0.0874 mW/g

Reference Value = 1.5 V/m

Power Drift = 0.5 dB

Maximum value of SAR = 0.25 mW/g



0 dB = 0.25mW/g

Back of the LCD Panel position, highest channel

Date/Time: 02/24/04

16:34:04

DUT: Wireless LAN 802.11g; Type: Mini PCI;

Program: Notebook

Communication System: Wireless LAN; Frequency: 2462 MHz; Duty Cycle: 1:1

Medium: M2450 ($\epsilon = 1.89782$ mho/m, $\mu_r = 52.7702$, $\rho = 1000$ kg/m³)

Phantom section: Flat Section

DASY4 Configuration:

- Probe: ET3DV6 - SN1759; ConvF(4.5, 4.5, 4.5); Calibrated: 2003/3/7
- Sensor-Surface: 4mm (Mechanical And Optical Surface Detection)
- Electronics: DAE3 Sn393; Calibrated: 2004/1/8
- Phantom: SAM 12; Type: SAM 4.0; Serial: TP:1150
- Measurement SW: DASY4, V4.1 Build 47; Postprocessing SW: SEMCAD, V1.6 Build 115

Left front/Area Scan (61x111x1): Measurement grid: dx=15mm, dy=15mm

Reference Value = 1.55 V/m

Power Drift = -0.009 dB

Maximum value of SAR = 0.299 mW/g

Left front/Zoom Scan (7x7x7)/Cube 0: Measurement grid: dx=5mm, dy=5mm, dz=5mm

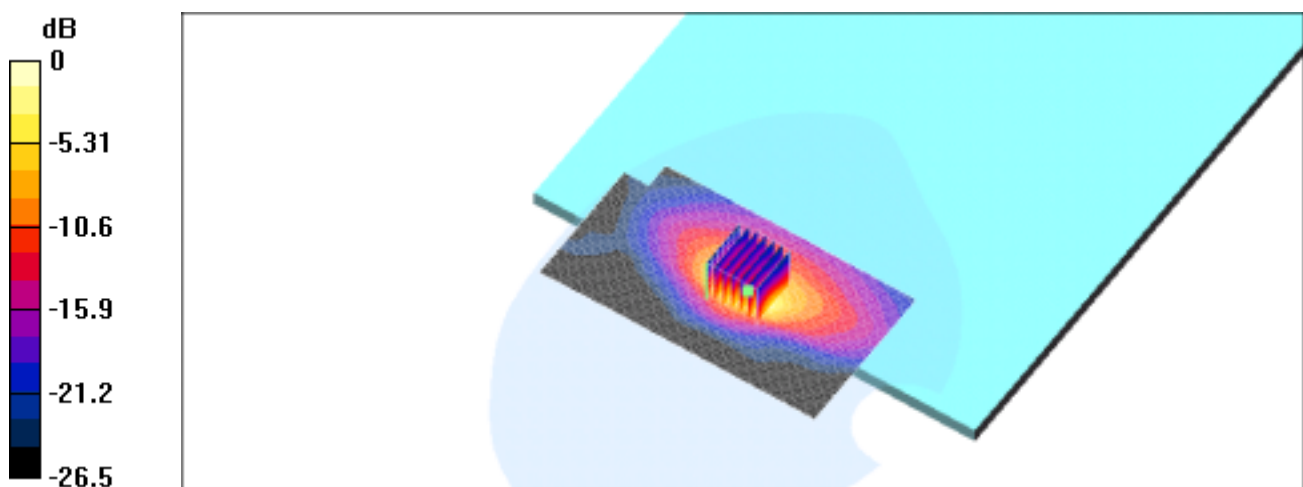
Peak SAR (extrapolated) = 0.685 W/kg

SAR(1 g) = 0.237 mW/g; SAR(10 g) = 0.0905 mW/g

Reference Value = 1.55 V/m

Power Drift = -0.009 dB

Maximum value of SAR = 0.26 mW/g



0 dB = 0.26mW/g

LCD panel position, lowest channel**DUT: Wireless LAN 802.11g; Type: Mini PCI;****Program: Notebook**

Communication System: Wireless LAN; Frequency: 2412 MHz; Duty Cycle: 1:1

Medium: M2450 ($\epsilon = 2.00274$ mho/m, $\mu_r = 52.4877$, $\rho = 1000$ kg/m³)

Phantom section: Flat Section

DASY4 Configuration:

- Probe: ET3DV6 - SN1759; ConvF(4.5, 4.5, 4.5); Calibrated: 2003/3/7
- Sensor-Surface: 4mm (Mechanical And Optical Surface Detection)
- Electronics: DAE3 Sn393; Calibrated: 2004/1/8
- Phantom: SAM 12; Type: SAM 4.0; Serial: TP:1150
- Measurement SW: DASY4, V4.1 Build 47; Postprocessing SW: SEMCAD, V1.6 Build 115

Right inside/Area Scan (71x101x1): Measurement grid: dx=15mm, dy=15mm

Reference Value = 3.33 V/m

Power Drift = 0.02 dB

Maximum value of SAR = 0.944 mW/g

Right inside/Zoom Scan (7x7x7)/Cube 0: Measurement grid: dx=5mm, dy=5mm, dz=5mm

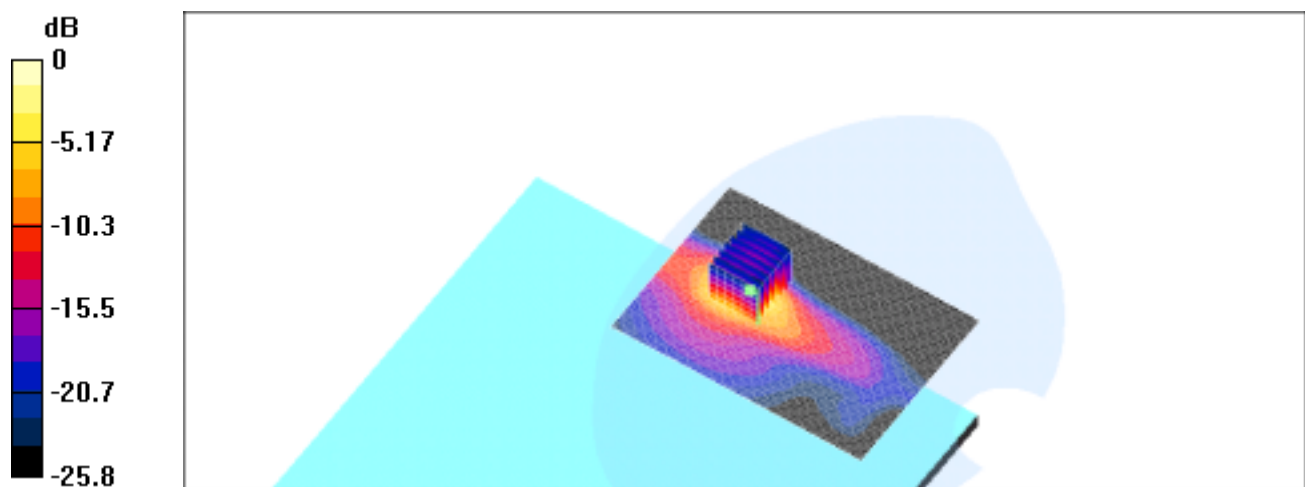
Peak SAR (extrapolated) = 2.05 W/kg

SAR(1 g) = 0.646 mW/g; SAR(10 g) = 0.231 mW/g

Reference Value = 3.33 V/m

Power Drift = 0.02 dB

Maximum value of SAR = 0.716 mW/g



0 dB = 0.716mW/g

LCD panel position, middle channel

Date/Time: 02/26/04 22:37:32

**DUT: Wireless LAN 802.11g; Type: Mini PCI;
Program: Notebook**

Communication System: Wireless LAN; Frequency: 2437 MHz; Duty Cycle: 1:1

Medium: M2450 ($\epsilon = 1.94852$ mho/m, $\mu_r = 52.8422$, $\rho = 1000$ kg/m³)

Phantom section: Flat Section

DASY4 Configuration:

- Probe: ET3DV6 - SN1759; ConvF(4.5, 4.5, 4.5); Calibrated: 2003/3/7
- Sensor-Surface: 4mm (Mechanical And Optical Surface Detection)
- Electronics: DAE3 Sn393; Calibrated: 2004/1/8
- Phantom: SAM 12; Type: SAM 4.0; Serial: TP:1150
- Measurement SW: DASY4, V4.1 Build 47; Postprocessing SW: SEMCAD, V1.6 Build 115

Right inside/Area Scan (71x101x1): Measurement grid: dx=15mm, dy=15mm

Reference Value = 3.42 V/m

Power Drift = -0.04 dB

Maximum value of SAR = 0.946 mW/g

Right inside/Zoom Scan (7x7x7)/Cube 0: Measurement grid: dx=5mm, dy=5mm, dz=5mm

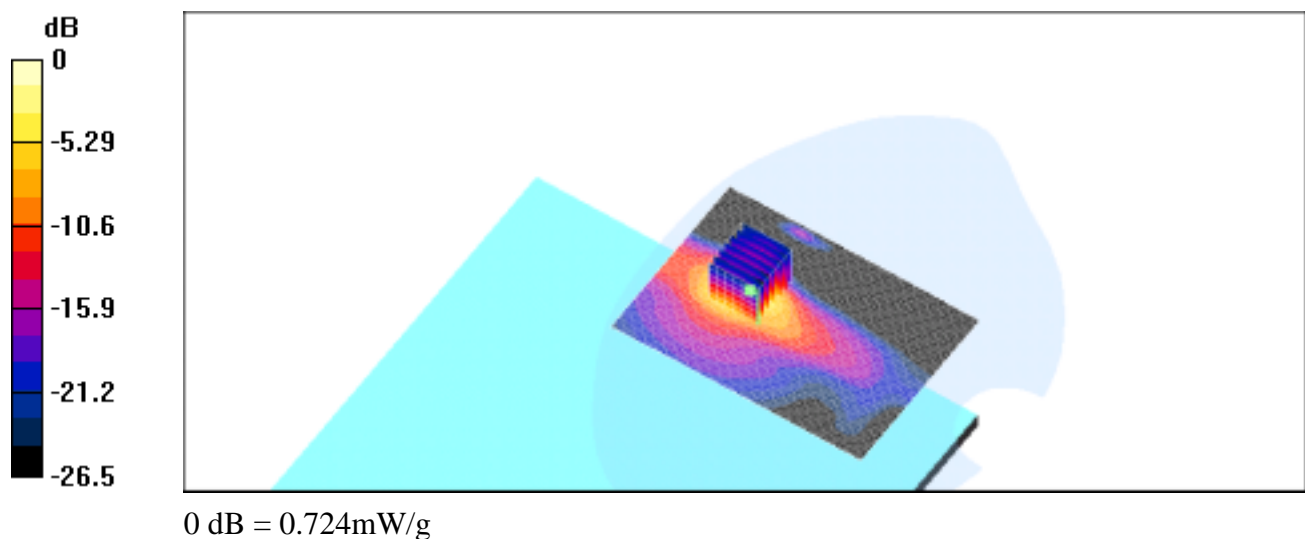
Peak SAR (extrapolated) = 2.05 W/kg

SAR(1 g) = 0.65 mW/g; SAR(10 g) = 0.231 mW/g

Reference Value = 3.42 V/m

Power Drift = -0.04 dB

Maximum value of SAR = 0.724 mW/g



LCD panel position, highest channel

Date/Time: 02/26/04 22:10:43

DUT: Wireless LAN 802.11g; Type: Mini PCI;

Program: Notebook

Communication System: Wireless LAN; Frequency: 2462 MHz; Duty Cycle: 1:1

Medium: M2450 ($\epsilon = 1.89782$ mho/m, $\mu_r = 52.7702$, $\rho = 1000$ kg/m³)

Phantom section: Flat Section

DASY4 Configuration:

- Probe: ET3DV6 - SN1759; ConvF(4.5, 4.5, 4.5); Calibrated: 2003/3/7
- Sensor-Surface: 4mm (Mechanical And Optical Surface Detection)
- Electronics: DAE3 Sn393; Calibrated: 2004/1/8
- Phantom: SAM 12; Type: SAM 4.0; Serial: TP:1150
- Measurement SW: DASY4, V4.1 Build 47; Postprocessing SW: SEMCAD, V1.6 Build 115

Right inside/Area Scan (71x101x1): Measurement grid: dx=15mm, dy=15mm

Reference Value = 3.35 V/m

Power Drift = -0.09 dB

Maximum value of SAR = 0.965 mW/g

Right inside/Zoom Scan (7x7x7)/Cube 0: Measurement grid: dx=5mm, dy=5mm, dz=5mm

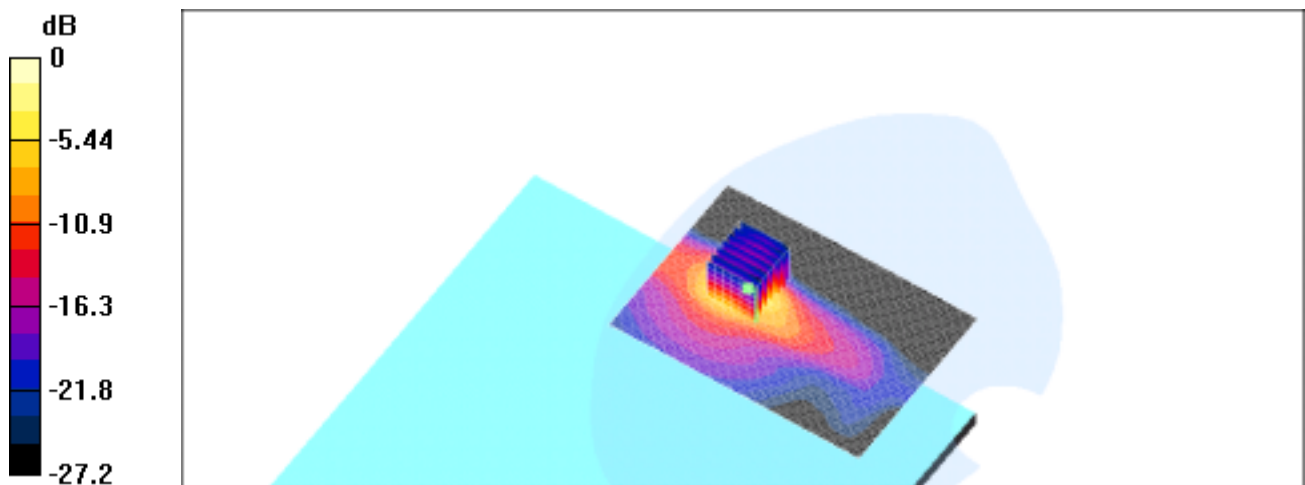
Peak SAR (extrapolated) = 2.11 W/kg

SAR(1 g) = 0.665 mW/g; SAR(10 g) = 0.238 mW/g

Reference Value = 3.35 V/m

Power Drift = -0.09 dB

Maximum value of SAR = 0.748 mW/g



0 dB = 0.748mW/g

Right Side position, lowest channel

DUT: Wireless LAN 802.11g; Type: Mini PCI;

Program: Notebook

Communication System: Wireless LAN; Frequency: 2412 MHz; Duty Cycle: 1:1

Medium: M2450 ($\rho = 2.00274$ mho/m, $\mu_r = 52.4877$, $\rho = 1000$ kg/m³)

Phantom section: Flat Section

DASY4 Configuration:

- Probe: ET3DV6 - SN1759; ConvF(4.5, 4.5, 4.5); Calibrated: 2003/3/7
- Sensor-Surface: 4mm (Mechanical And Optical Surface Detection)
- Electronics: DAE3 Sn393; Calibrated: 2004/1/8
- Phantom: SAM 12; Type: SAM 4.0; Serial: TP:1150
- Measurement SW: DASY4, V4.1 Build 47; Postprocessing SW: SEMCAD, V1.6 Build 115

Right Top/Area Scan (71x131x1): Measurement grid: dx=15mm, dy=15mm

Reference Value = 6.62 V/m

Power Drift = -0.02 dB

Maximum value of SAR = 0.0769 mW/g

Right Top/Zoom Scan (7x7x7)/Cube 0: Measurement grid: dx=5mm, dy=5mm, dz=5mm

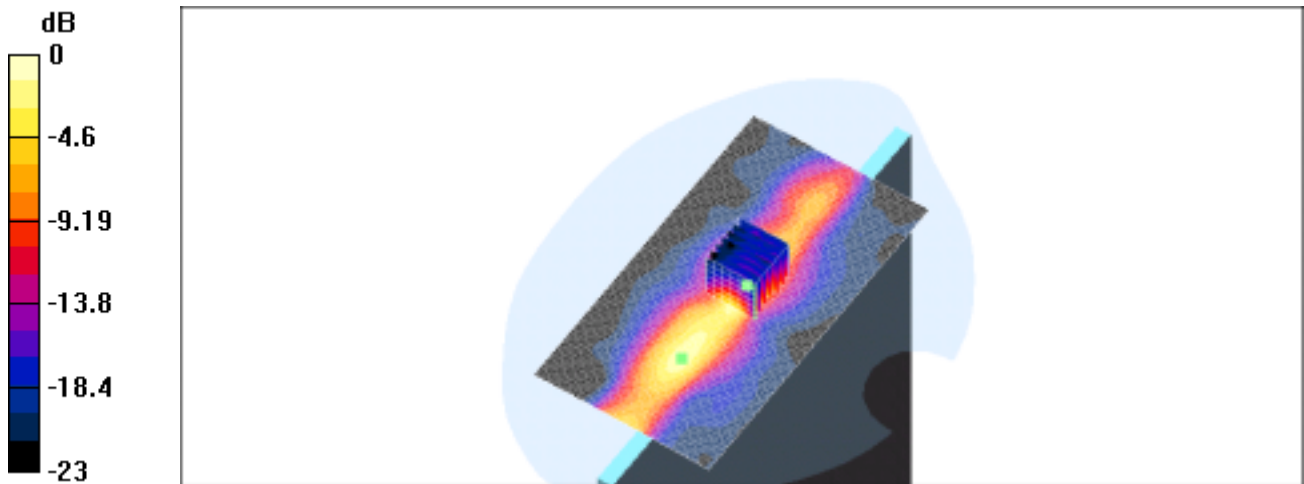
Peak SAR (extrapolated) = 0.228 W/kg

SAR(1 g) = 0.0724 mW/g; SAR(10 g) = 0.0256 mW/g

Reference Value = 6.62 V/m

Power Drift = -0.02 dB

Maximum value of SAR = 0.0889 mW/g



0 dB = 0.0889mW/g

Right Side position, middle channel

Date/Time: 02/26/04 13:14:30

DUT: Wireless LAN 802.11g; Type: Mini PCI;**Program: Notebook**

Communication System: Wireless LAN; Frequency: 2437 MHz; Duty Cycle: 1:1

Medium: M2450 ($\rho = 1.94852$ mho/m, $\mu_r = 52.8422$, $\rho = 1000$ kg/m³)

Phantom section: Flat Section

DASY4 Configuration:

- Probe: ET3DV6 - SN1759; ConvF(4.5, 4.5, 4.5); Calibrated: 2003/3/7
- Sensor-Surface: 4mm (Mechanical And Optical Surface Detection)
- Electronics: DAE3 Sn393; Calibrated: 2004/1/8
- Phantom: SAM 12; Type: SAM 4.0; Serial: TP:1150
- Measurement SW: DASY4, V4.1 Build 47; Postprocessing SW: SEMCAD, V1.6 Build 115

Right Top/Area Scan (71x131x1): Measurement grid: dx=15mm, dy=15mm

Reference Value = 6.28 V/m

Power Drift = -0.1 dB

Maximum value of SAR = 0.068 mW/g

Right Top/Zoom Scan (7x7x7)/Cube 0: Measurement grid: dx=5mm, dy=5mm, dz=5mm

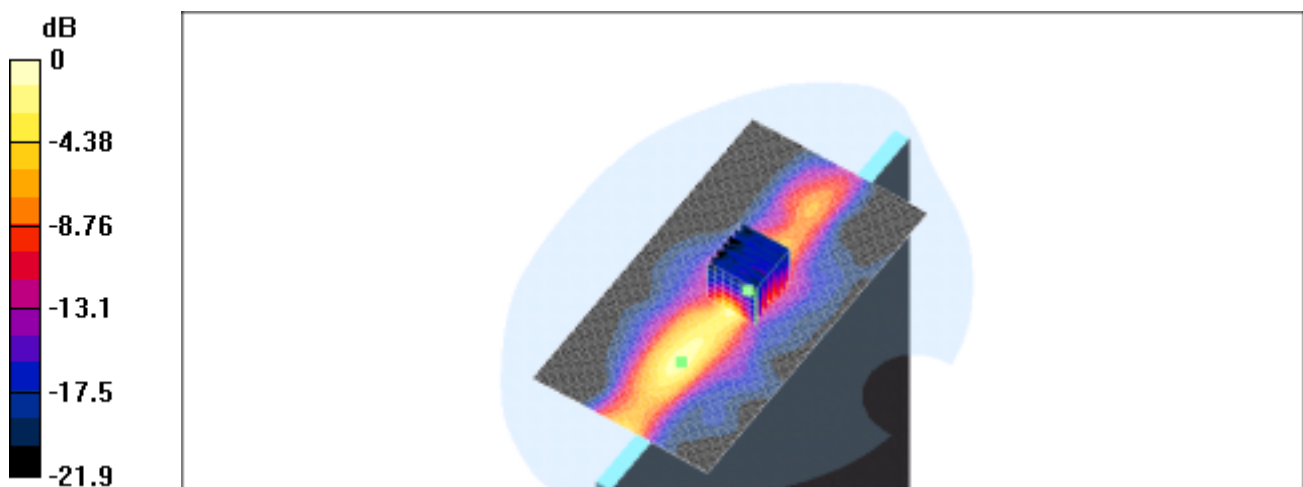
Peak SAR (extrapolated) = 0.201 W/kg

SAR(1 g) = 0.0631 mW/g; SAR(10 g) = 0.0222 mW/g

Reference Value = 6.28 V/m

Power Drift = -0.1 dB

Maximum value of SAR = 0.0759 mW/g



0 dB = 0.0759mW/g

Right Side position, highest channel

DUT: Wireless LAN 802.11g; Type: Mini PCI;

Program: Notebook

Communication System: Wireless LAN; Frequency: 2462 MHz; Duty Cycle: 1:1

Medium: M2450 ($\epsilon = 1.89782$ mho/m, $\mu_r = 52.7702$, $\rho = 1000$ kg/m³)

Phantom section: Flat Section

DASY4 Configuration:

- Probe: ET3DV6 - SN1759; ConvF(4.5, 4.5, 4.5); Calibrated: 2003/3/7
- Sensor-Surface: 4mm (Mechanical And Optical Surface Detection)
- Electronics: DAE3 Sn393; Calibrated: 2004/1/8
- Phantom: SAM 12; Type: SAM 4.0; Serial: TP:1150
- Measurement SW: DASY4, V4.1 Build 47; Postprocessing SW: SEMCAD, V1.6 Build 115

Right Top/Area Scan (71x131x1): Measurement grid: dx=15mm, dy=15mm

Reference Value = 6.97 V/m

Power Drift = -0.2 dB

Maximum value of SAR = 0.0798 mW/g

Right Top/Zoom Scan (7x7x7)/Cube 0: Measurement grid: dx=5mm, dy=5mm, dz=5mm

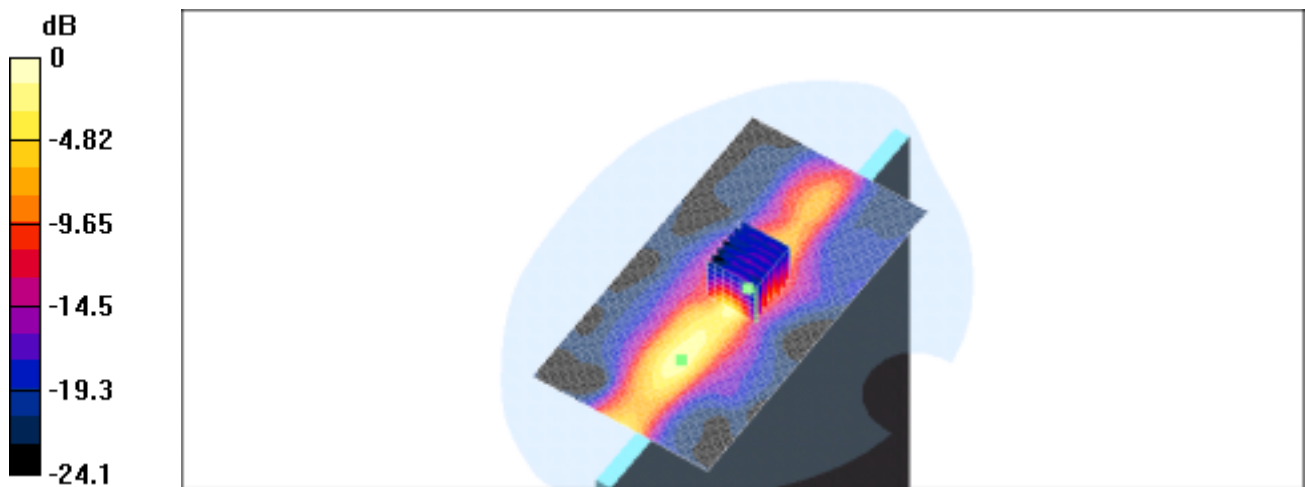
Peak SAR (extrapolated) = 0.239 W/kg

SAR(1 g) = 0.0738 mW/g; SAR(10 g) = 0.0259 mW/g

Reference Value = 6.97 V/m

Power Drift = -0.2 dB

Maximum value of SAR = 0.0884 mW/g



0 dB = 0.0884mW/g

Back of the LCD Panel position, lowest channelDate/Time: 02/25/04
15:43:10

DUT: Wireless LAN 802.11g; Type: Mini PCI;
Program: Notebook

Communication System: Wireless LAN; Frequency: 2412 MHz; Duty Cycle: 1:1
Medium: M2450 ($\epsilon = 2.00274$ mho/m, $\mu_r = 52.4877$, $\rho = 1000$ kg/m³)
Phantom section: Flat Section

DASY4 Configuration:

- Probe: ET3DV6 - SN1759; ConvF(4.5, 4.5, 4.5); Calibrated: 2003/3/7
- Sensor-Surface: 4mm (Mechanical And Optical Surface Detection)
- Electronics: DAE3 Sn393; Calibrated: 2004/1/8
- Phantom: SAM 12; Type: SAM 4.0; Serial: TP:1150
- Measurement SW: DASY4, V4.1 Build 47; Postprocessing SW: SEMCAD, V1.6 Build 115

Right front/Area Scan (71x101x1): Measurement grid: dx=15mm, dy=15mm

Reference Value = 1.66 V/m

Power Drift = -0.009 dB

Maximum value of SAR = 0.119 mW/g

Right front/Zoom Scan (7x7x7)/Cube 0: Measurement grid: dx=5mm, dy=5mm, dz=5mm

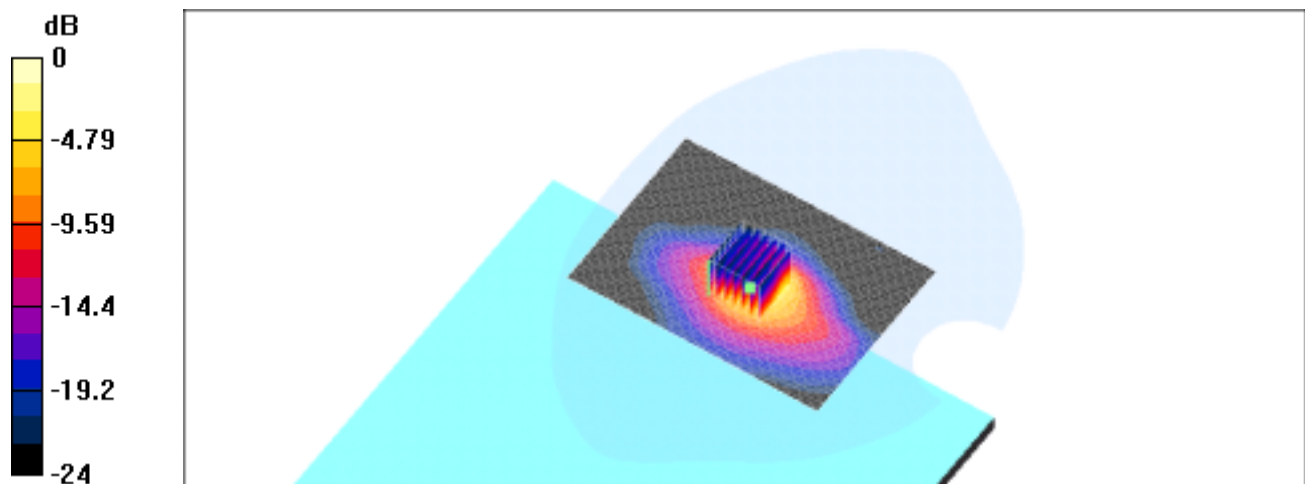
Peak SAR (extrapolated) = 0.501 W/kg

SAR(1 g) = 0.173 mW/g; SAR(10 g) = 0.0651 mW/g

Reference Value = 1.66 V/m

Power Drift = -0.009 dB

Maximum value of SAR = 0.197 mW/g



0 dB = 0.197mW/g

Back of the LCD Panel position, middle channelDate/Time: 02/25/04
14:53:29

DUT: Wireless LAN 802.11g; Type: Mini PCI;
Program: Notebook

Communication System: Wireless LAN; Frequency: 2437 MHz; Duty Cycle: 1:1
Medium: M2450 ($\epsilon = 1.94852$ mho/m, $\mu_r = 52.8422$, $\rho = 1000$ kg/m³)
Phantom section: Flat Section

DASY4 Configuration:

- Probe: ET3DV6 - SN1759; ConvF(4.5, 4.5, 4.5); Calibrated: 2003/3/7
- Sensor-Surface: 4mm (Mechanical And Optical Surface Detection)
- Electronics: DAE3 Sn393; Calibrated: 2004/1/8
- Phantom: SAM 12; Type: SAM 4.0; Serial: TP:1150
- Measurement SW: DASY4, V4.1 Build 47; Postprocessing SW: SEMCAD, V1.6 Build 115

Right front/Area Scan (71x101x1): Measurement grid: dx=15mm, dy=15mm

Reference Value = 1.57 V/m

Power Drift = 0.08 dB

Maximum value of SAR = 0.105 mW/g

Right front/Zoom Scan (7x7x7)/Cube 0: Measurement grid: dx=5mm, dy=5mm, dz=5mm

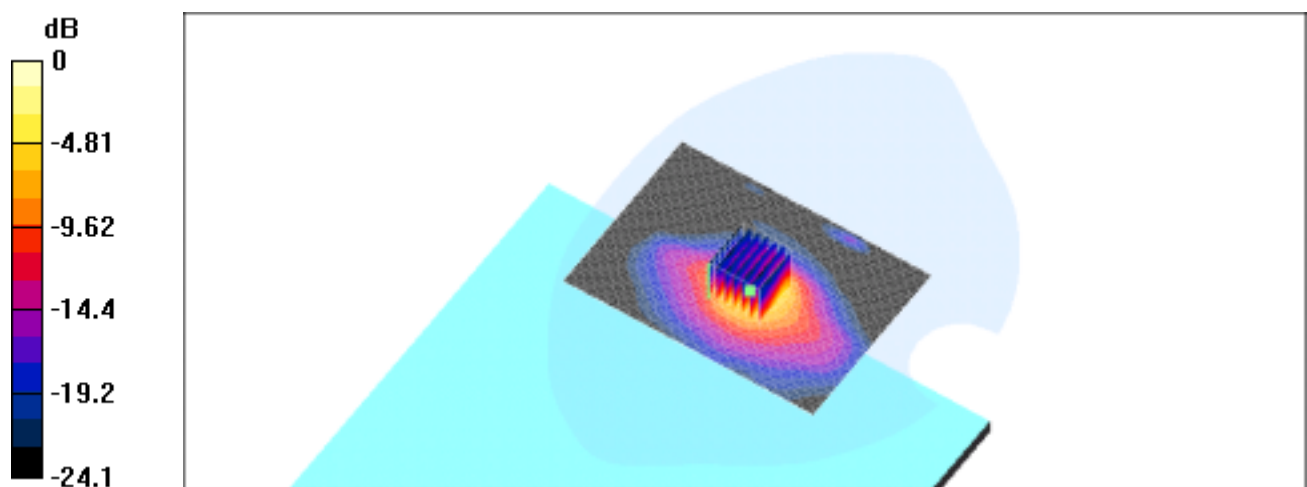
Peak SAR (extrapolated) = 0.422 W/kg

SAR(1 g) = 0.148 mW/g; SAR(10 g) = 0.0566 mW/g

Reference Value = 1.57 V/m

Power Drift = 0.08 dB

Maximum value of SAR = 0.181 mW/g



0 dB = 0.181mW/g

Back of the LCD Panel position, highest channel

DUT: Wireless LAN 802.11g; Type: Mini PCI;

Program: Notebook

Communication System: Wireless LAN; Frequency: 2462 MHz; Duty Cycle: 1:1

Medium: M2450 ($\sigma = 1.89782$ mho/m, $\epsilon_r = 52.7702$, $\rho = 1000$ kg/m³)

Phantom section: Flat Section

DASY4 Configuration:

- Probe: ET3DV6 - SN1759; ConvF(4.5, 4.5, 4.5); Calibrated: 2003/3/7
- Sensor-Surface: 4mm (Mechanical And Optical Surface Detection)
- Electronics: DAE3 Sn393; Calibrated: 2004/1/8
- Phantom: SAM 12; Type: SAM 4.0; Serial: TP:1150
- Measurement SW: DASY4, V4.1 Build 47; Postprocessing SW: SEMCAD, V1.6 Build 115

Right front/Area Scan (71x101x1): Measurement grid: dx=15mm, dy=15mm

Reference Value = 1.59 V/m

Power Drift = -0.1 dB

Maximum value of SAR = 0.103 mW/g

Right front/Zoom Scan (7x7x7)/Cube 0: Measurement grid: dx=5mm, dy=5mm, dz=5mm

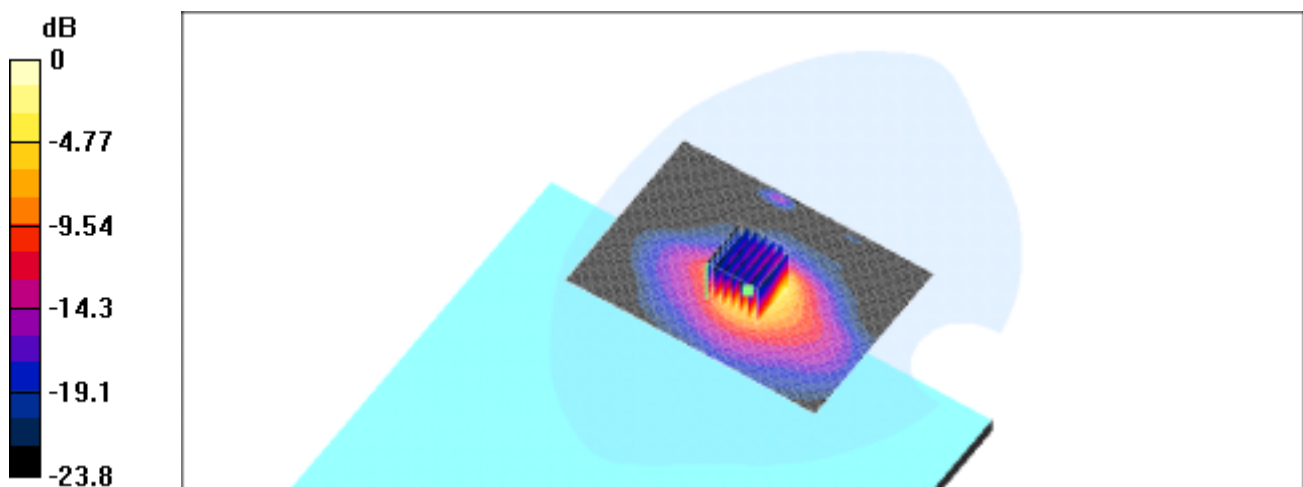
Peak SAR (extrapolated) = 0.417 W/kg

SAR(1 g) = 0.143 mW/g; SAR(10 g) = 0.0537 mW/g

Reference Value = 1.59 V/m

Power Drift = -0.1 dB

Maximum value of SAR = 0.162 mW/g



0 dB = 0.162mW/g

LCD panel position, lowest channel

DUT: Wireless LAN 802.11g; Type: Mini PCI;

Program: Notebook

Communication System: Wireless LAN; Frequency: 2412 MHz; Duty Cycle: 1:1

Medium: M2450 ($\epsilon = 2.00274$ mho/m, $\mu_r = 52.4877$, $\rho = 1000$ kg/m³)

Phantom section: Flat Section

DASY4 Configuration:

- Probe: ET3DV6 - SN1759; ConvF(4.5, 4.5, 4.5); Calibrated: 2003/3/7
- Sensor-Surface: 4mm (Mechanical And Optical Surface Detection)
- Electronics: DAE3 Sn393; Calibrated: 2004/1/8
- Phantom: SAM 12; Type: SAM 4.0; Serial: TP:1150
- Measurement SW: DASY4, V4.1 Build 47; Postprocessing SW: SEMCAD, V1.6 Build 115

Right inside/Area Scan (71x101x1): Measurement grid: dx=15mm, dy=15mm

Reference Value = 2.6 V/m

Power Drift = 0.1 dB

Maximum value of SAR = 0.259 mW/g

Right inside/Zoom Scan (7x7x7)/Cube 0: Measurement grid: dx=5mm, dy=5mm, dz=5mm

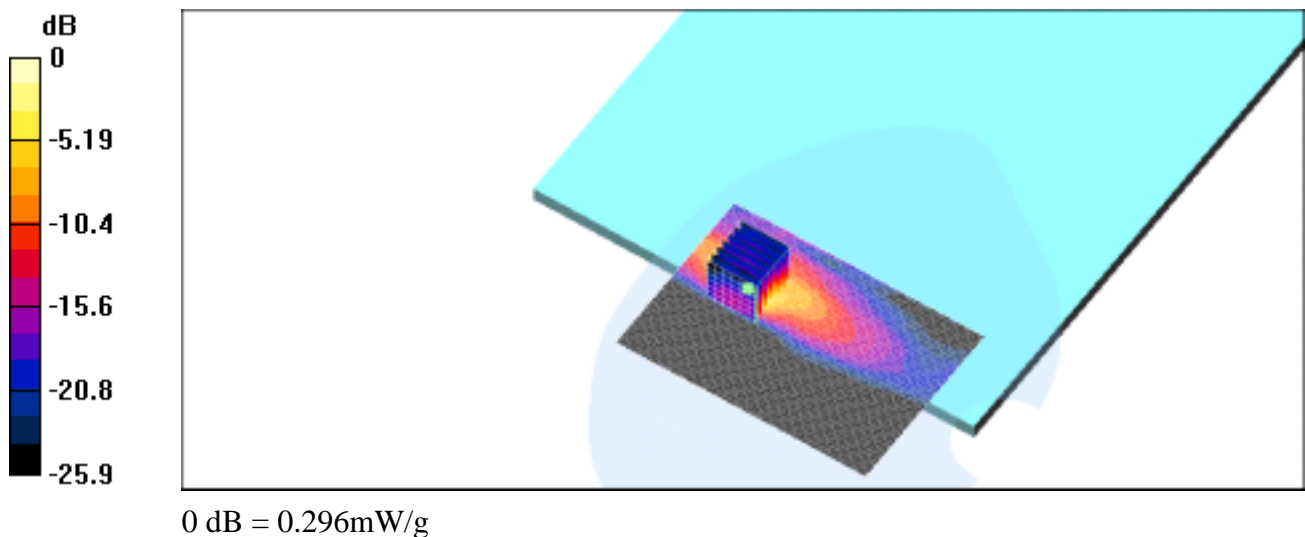
Peak SAR (extrapolated) = 0.84 W/kg

SAR(1 g) = 0.25 mW/g; SAR(10 g) = 0.0853 mW/g

Reference Value = 2.6 V/m

Power Drift = 0.1 dB

Maximum value of SAR = 0.296 mW/g



LCD panel position, middle channel

DUT: Wireless LAN 802.11g; Type: Mini PCI;

Program: Notebook

Communication System: Wireless LAN; Frequency: 2437 MHz; Duty Cycle: 1:1

Medium: M2450 ($\epsilon = 1.94852$ mho/m, $\mu_r = 52.8422$, $\rho = 1000$ kg/m³)

Phantom section: Flat Section

DASY4 Configuration:

- Probe: ET3DV6 - SN1759; ConvF(4.5, 4.5, 4.5); Calibrated: 2003/3/7
- Sensor-Surface: 4mm (Mechanical And Optical Surface Detection)
- Electronics: DAE3 Sn393; Calibrated: 2004/1/8
- Phantom: SAM 12; Type: SAM 4.0; Serial: TP:1150
- Measurement SW: DASY4, V4.1 Build 47; Postprocessing SW: SEMCAD, V1.6 Build 115

Right inside/Area Scan (71x101x1): Measurement grid: dx=15mm, dy=15mm

Reference Value = 2.46 V/m

Power Drift = 0.02 dB

Maximum value of SAR = 0.222 mW/g

Right inside/Zoom Scan (7x7x7)/Cube 0: Measurement grid: dx=5mm, dy=5mm, dz=5mm

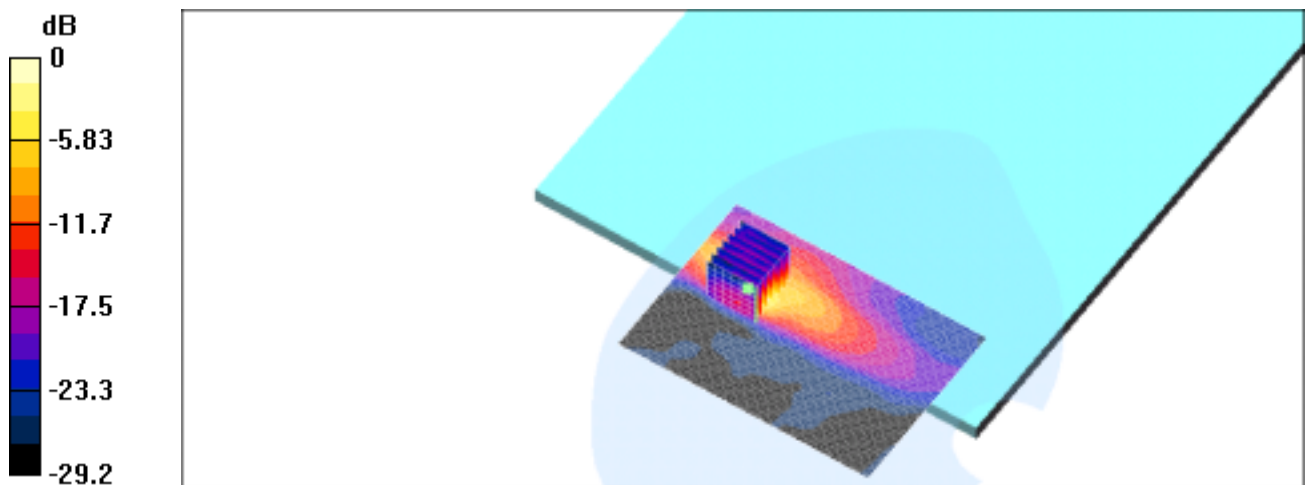
Peak SAR (extrapolated) = 0.76 W/kg

SAR(1 g) = 0.22 mW/g; SAR(10 g) = 0.074 mW/g

Reference Value = 2.46 V/m

Power Drift = 0.02 dB

Maximum value of SAR = 0.253 mW/g



0 dB = 0.253mW/g

LCD panel position, highest channel

DUT: Wireless LAN 802.11g; Type: Mini PCI;

Program: Notebook

Communication System: Wireless LAN; Frequency: 2462 MHz; Duty Cycle: 1:1

Medium: M2450 ($\epsilon = 1.89782$ mho/m, $\mu_r = 52.7702$, $\rho = 1000$ kg/m³)

Phantom section: Flat Section

DASY4 Configuration:

- Probe: ET3DV6 - SN1759; ConvF(4.5, 4.5, 4.5); Calibrated: 2003/3/7
- Sensor-Surface: 4mm (Mechanical And Optical Surface Detection)
- Electronics: DAE3 Sn393; Calibrated: 2004/1/8
- Phantom: SAM 12; Type: SAM 4.0; Serial: TP:1150
- Measurement SW: DASY4, V4.1 Build 47; Postprocessing SW: SEMCAD, V1.6 Build 115

Right inside/Area Scan (71x101x1): Measurement grid: dx=15mm, dy=15mm

Reference Value = 2.64 V/m

Power Drift = 0.07 dB

Maximum value of SAR = 0.254 mW/g

Right inside/Zoom Scan (7x7x7)/Cube 0: Measurement grid: dx=5mm, dy=5mm, dz=5mm

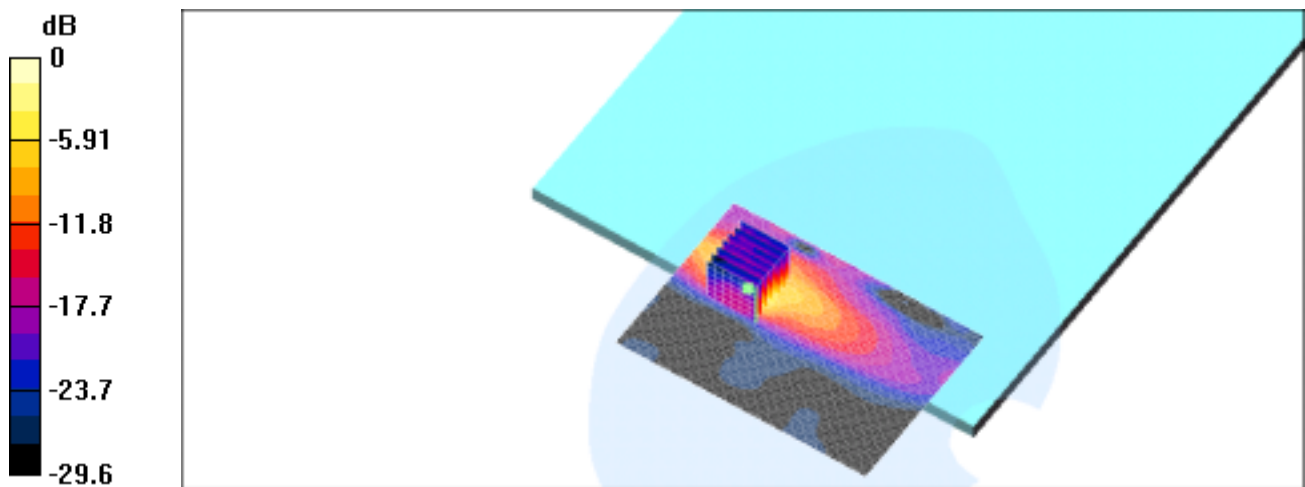
Peak SAR (extrapolated) = 0.854 W/kg

SAR(1 g) = 0.253 mW/g; SAR(10 g) = 0.0858 mW/g

Reference Value = 2.64 V/m

Power Drift = 0.07 dB

Maximum value of SAR = 0.296 mW/g



0 dB = 0.296mW/g

SAR System Performance Verification

DUT: Dipole 2450 MHz; Type: D2450V2; Serial: D2450V2 - SN:727
Program: 20040224

Communication System: CW; Frequency: 2450 MHz; Duty Cycle: 1:1
Medium: M2450 ($\epsilon = 1.90203$ mho/m, $\mu_r = 52.9262$, $\rho = 1000$ kg/m³)
Phantom section: Flat Section

DASY4 Configuration:

- Probe: ET3DV6 - SN1759; ConvF(4.5, 4.5, 4.5); Calibrated: 2003/3/7
- Sensor-Surface: 4mm (Mechanical And Optical Surface Detection)
- Electronics: DAE3 Sn393; Calibrated: 2004/1/8
- Phantom: SAM 12; Type: SAM 4.0; Serial: TP:1150
- Measurement SW: DASY4, V4.1 Build 47; Postprocessing SW: SEMCAD, V1.6 Build 115

System Test/Area Scan (101x101x1): Measurement grid: dx=10mm, dy=10mm

Reference Value = 92.1 V/m

Power Drift = 0.02 dB

Maximum value of SAR = 14.6 mW/g

System Test/Zoom Scan (7x7x7)/Cube 0: Measurement grid: dx=5mm, dy=5mm, dz=5mm

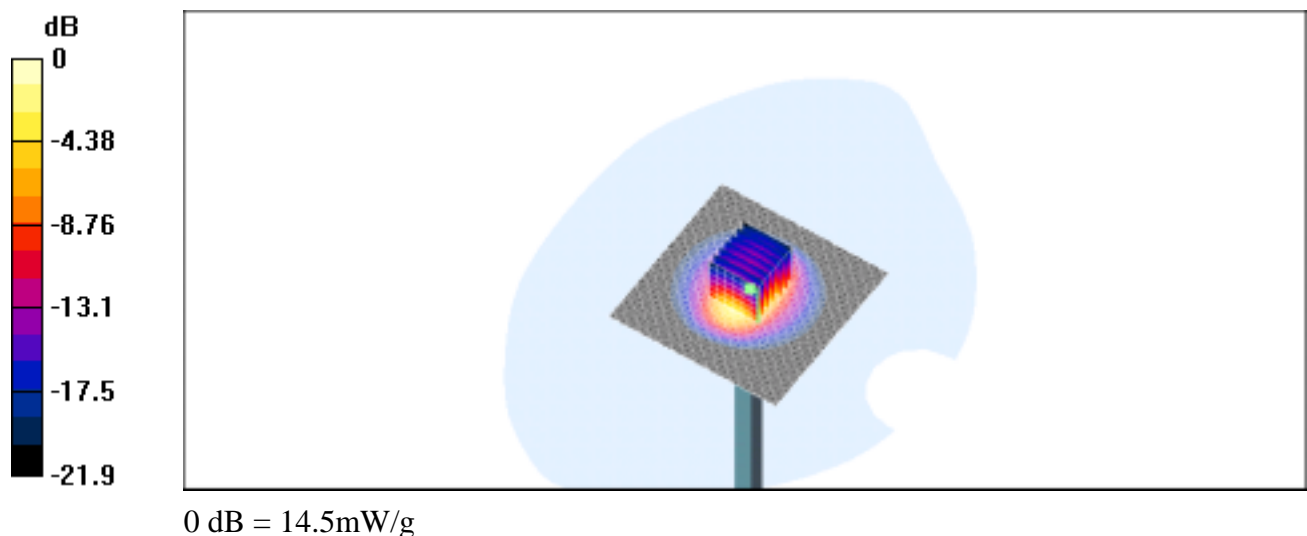
Peak SAR (extrapolated) = 28.3 W/kg

SAR(1 g) = 13.1 mW/g; SAR(10 g) = 5.9 mW/g

Reference Value = 92.1 V/m

Power Drift = 0.02 dB

Maximum value of SAR = 14.5 mW/g



Appendix

Photographs of Test Setup



Fig.1 Photograph of the SAR measurement System

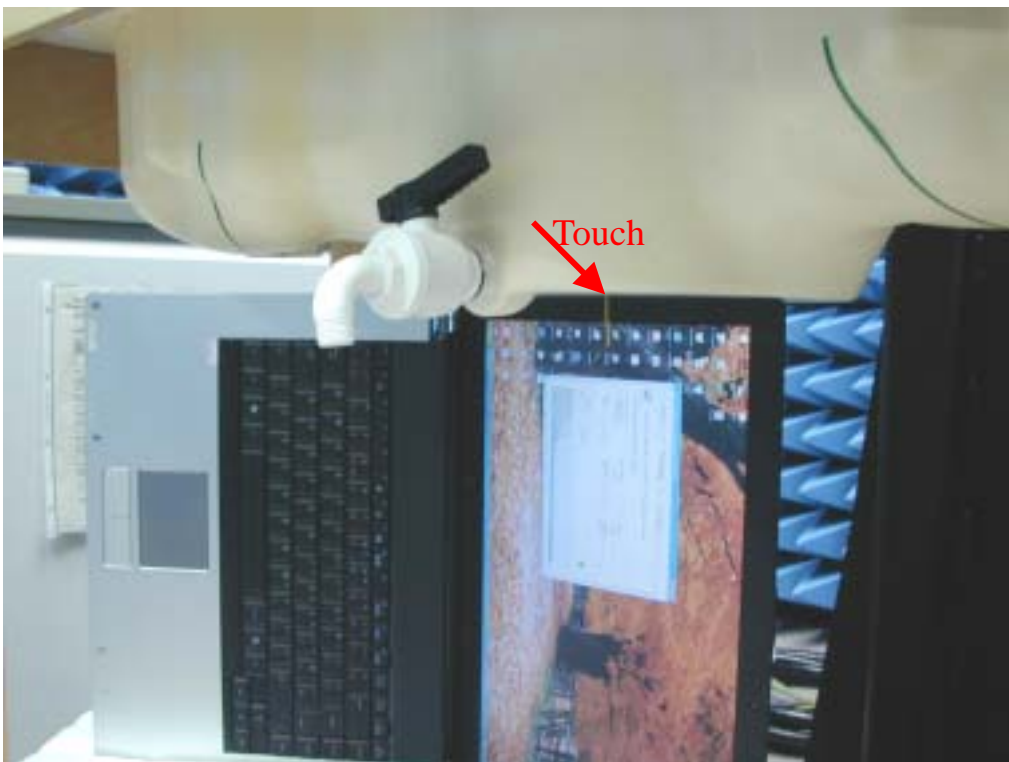


Fig.2 Photograph of the left side of Main Antenna contact to the flat phantom;
and at a distance of 0.0 cm from the base of the phantom

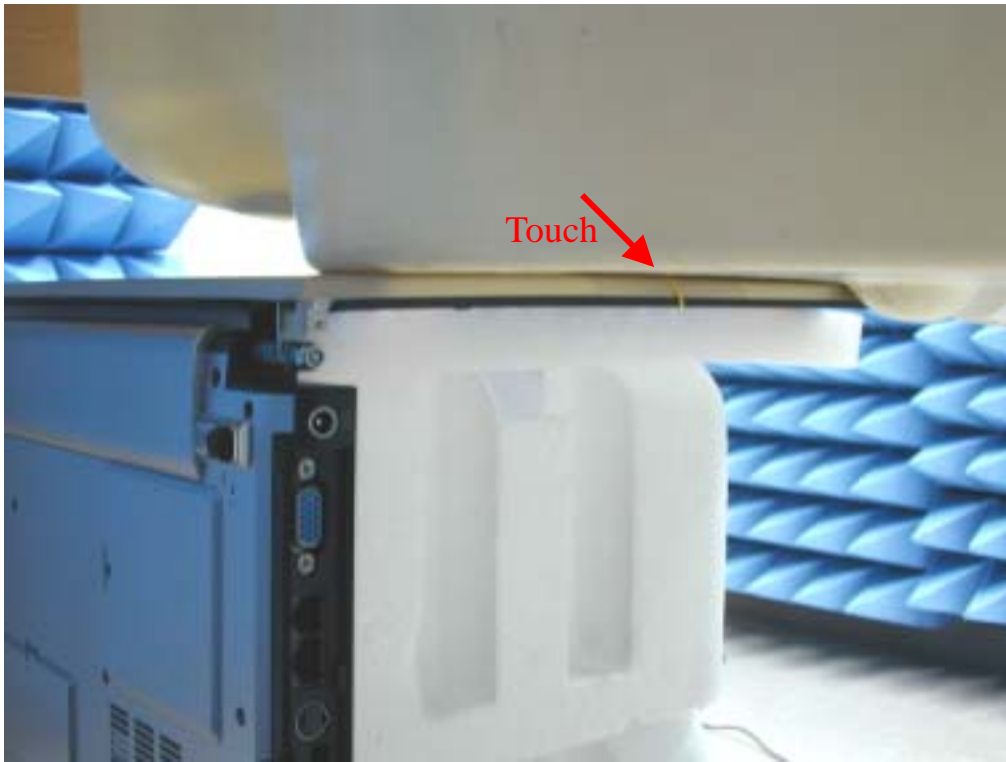


Fig.3 Photograph of the back of the LCD Panel of Main Antenna contact to the flat phantom; and at a distance of 0.0 cm from the base of the phantom.

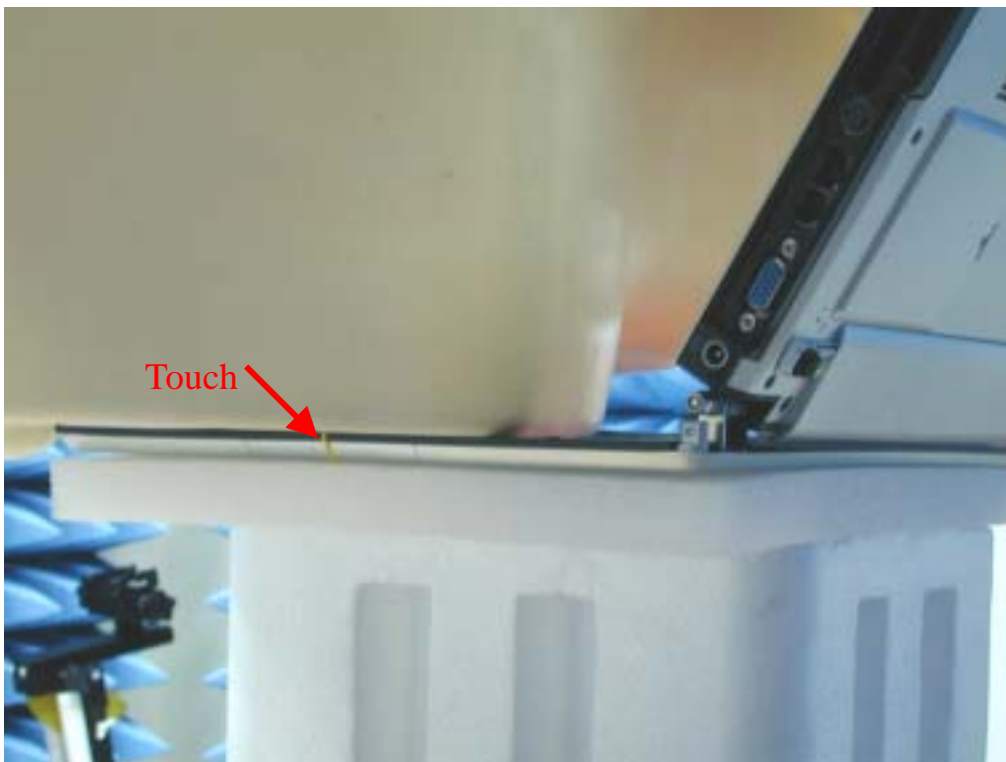


Fig.4 Photograph of the LCD panel of Main Antenna contact to the flat phantom; and at a distance of 0.0 cm from the base of the phantom.

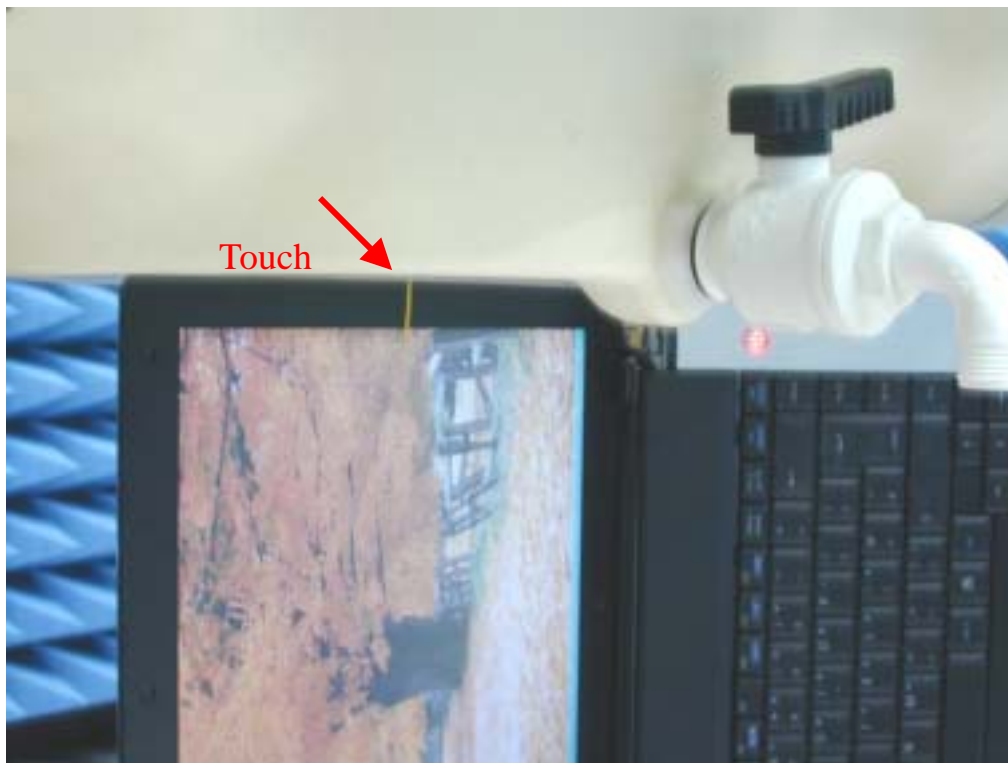


Fig.5 Photograph of the right side of Auxiliary Antenna contact to the flat Phantom; and at a distance of 0.0 cm from the base of the phantom

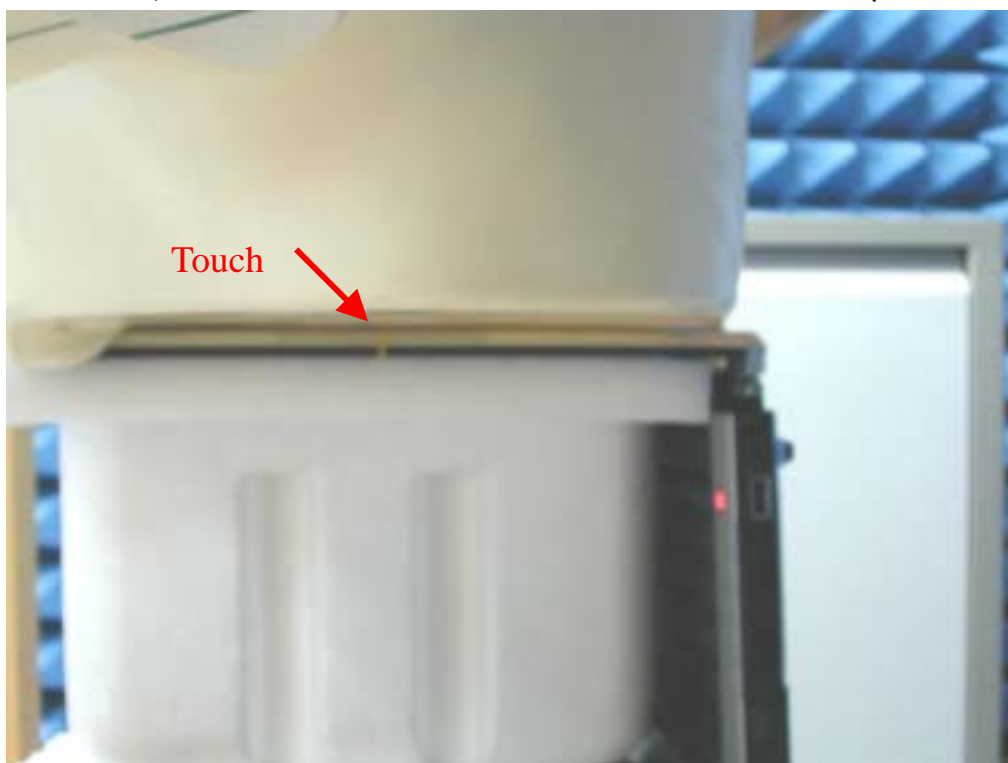


Fig.6 Photograph of the back of the LCD Panel of Auxiliary Antenna contact to the flat phantom ; and at a distance of 0.0 cm from the base of the phantom



Fig.7 Photograph of the LCD panel of Auxiliary Antenna contact to the flat phantom;
and at a distance of 0.0 cm from the base of the phantom.

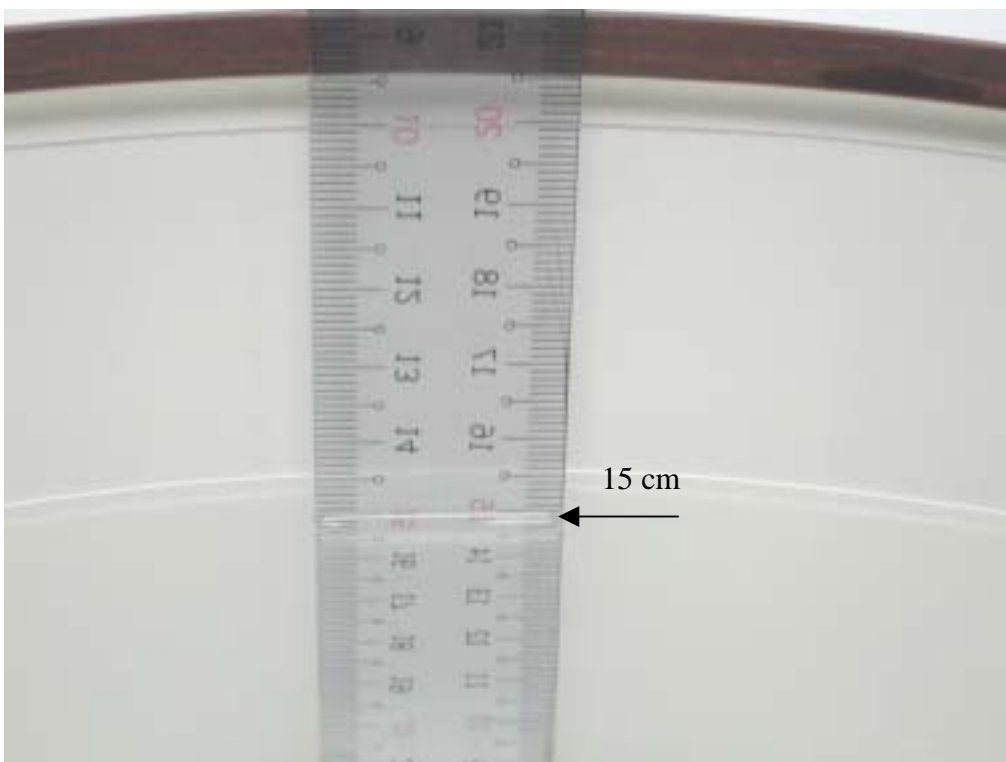


Fig.8 Photograph of the Tissue Simulant Fluid liquid depth 15cm

Photographs of the EUT



Fig.9 Antenna Position of EUT



Fig.10 Left side view of EUT

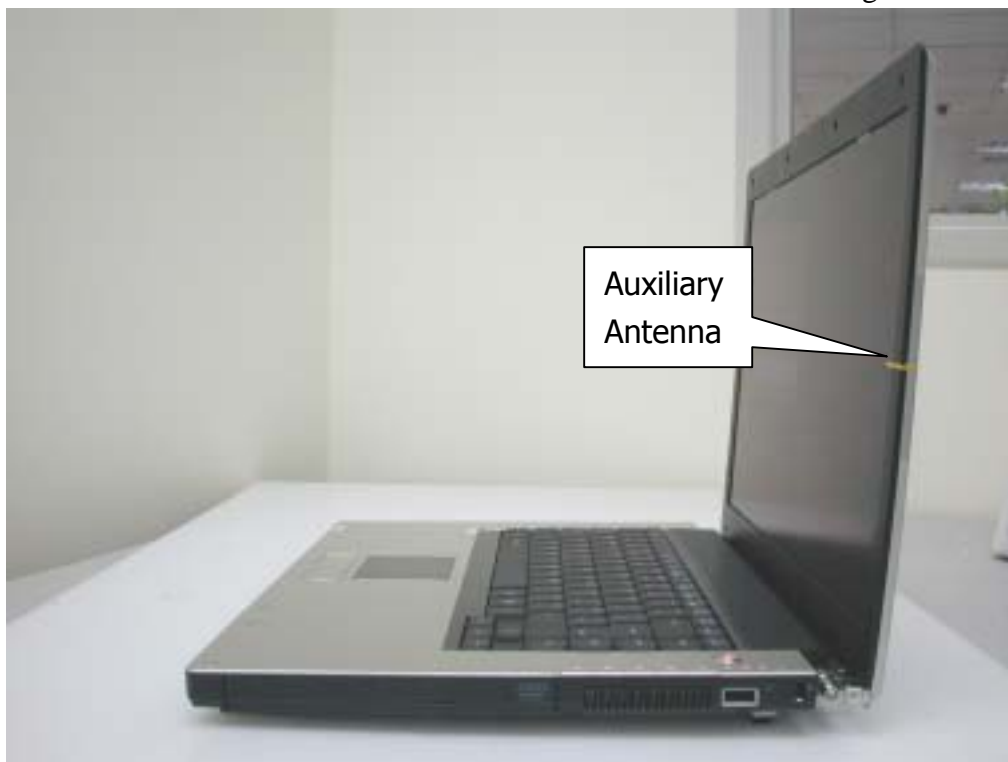


Fig.11 Right side view of EUT



Fig.11 Front view of EUT



Fig.11 Back view of EUT

Probe Calibration certificate

Calibration Laboratory of
Schmid & Partner
Engineering AG
Zeughausstrasse 43, 8004 Zurich, Switzerland

Client **SGS (Auden)**

CALIBRATION CERTIFICATE

Object(s) **ET3DV6 - SN:1759**

Calibration procedure(s) **QA CAL-01.v2
Calibration procedure for dosimetric E-field probes**

Calibration date: **March 7, 2003**

Condition of the calibrated item **In Tolerance (according to the specific calibration document)**

This calibration statement documents traceability of M&TE used in the calibration procedures and conformity of the procedures with the ISO/IEC 17025 international standard.

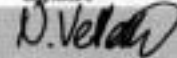
All calibrations have been conducted in the closed laboratory facility: environment temperature 22 ± 2 degrees Celsius and humidity $< 75\%$.

Calibration Equipment used (M&TE critical for calibration)

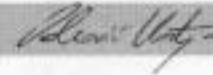
Model Type	ID #	Cal Date	Scheduled Calibration
RF generator HP 8684C	US3642U01700	4-Aug-99 (in house check Aug-02)	in house check: Aug-05
Power sensor E4412A	MY41495277	8-Mar-02	Mar-03
Power sensor HP 8481A	MY41092160	18-Sep-02	Sep-03
Power meter EPM E4419B	GB41293874	13-Sep-02	Sep-03
Network Analyzer HP 8753E	US36432426	3-May-00	in house check: May 03
Fuke Process Calibrator Type 702	SN: 6295803	3-Sep-01	Sep-03

Calibrated by: **Nico Vertert** **Technician**

Signature



Approved by: **Katja Pokovic** **Laboratory Director**



Date issued: March 7, 2003

This calibration certificate is issued as an intermediate solution until the accreditation process (based on ISO/IEC 17025 International Standard) for Calibration Laboratory of Schmid & Partner Engineering AG is completed.

Schmid & Partner Engineering AG

s p e a g

Zeughausstrasse 43, 8004 Zurich, Switzerland
Phone +41 1 245 9700, Fax +41 1 245 9778
info@speag.com, <http://www.speag.com>

Probe ET3DV6

SN:1759

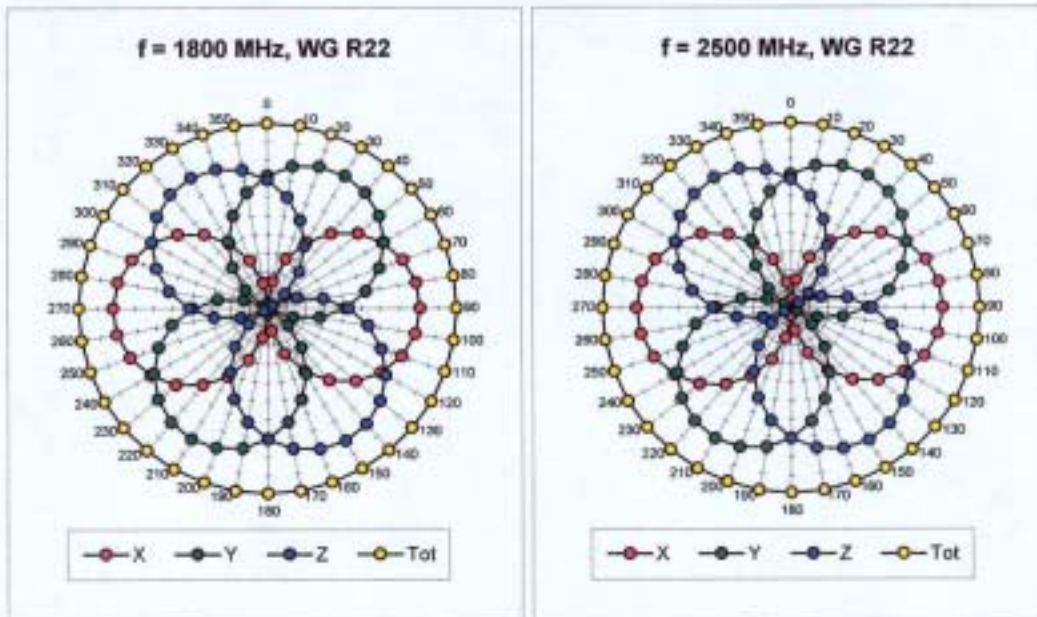
Manufactured:	November 12, 2002
Last calibration:	March 7, 2003

Calibrated for DASY Systems

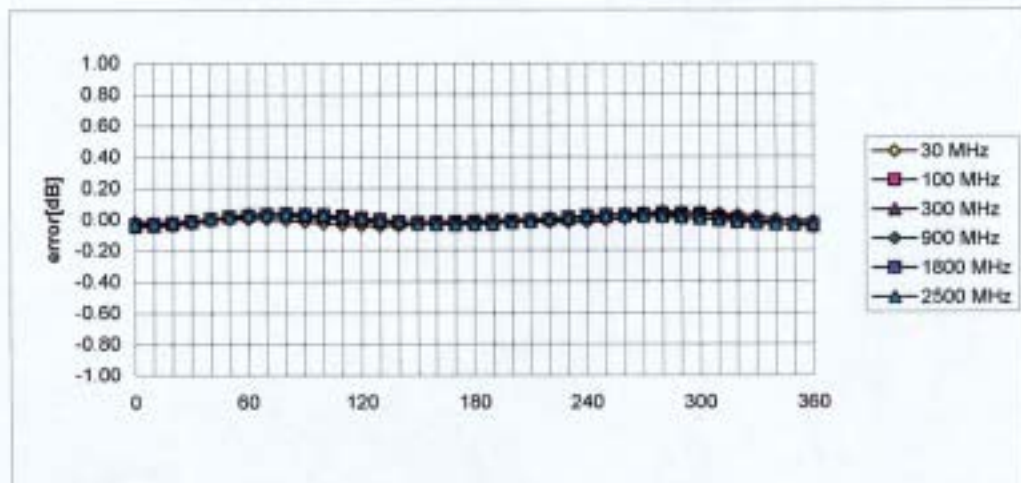
(Note: non-compatible with DASY2 system!)

ET3DV6 SN:1759

March 7, 2003



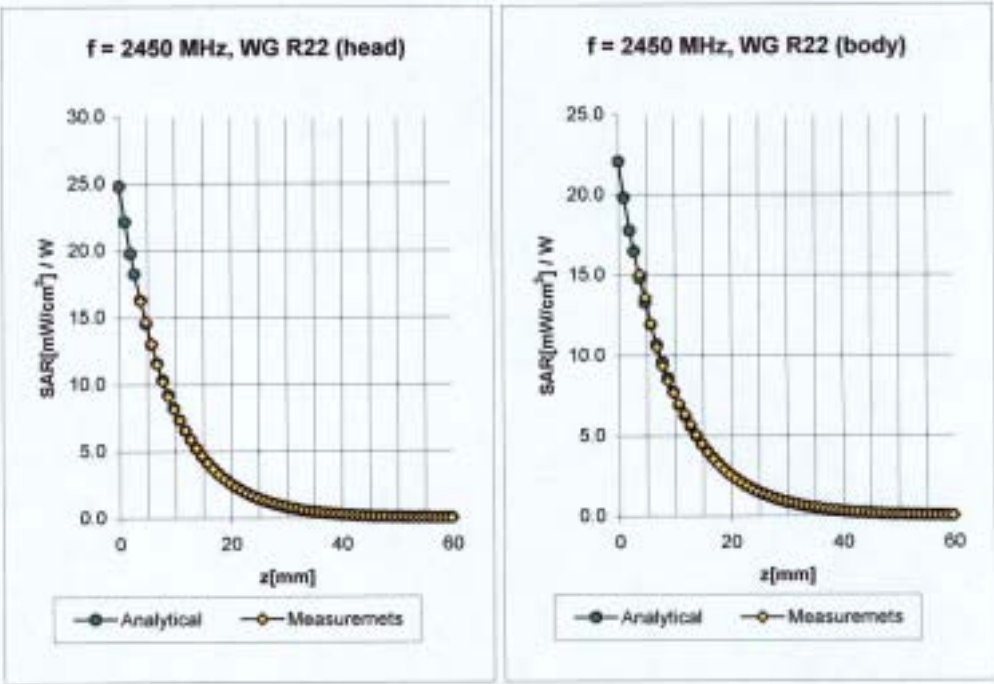
Isotropy Error (ϕ), $\theta = 0^\circ$



ET3DV6 SN:1759

March 7, 2003

Conversion Factor Assessment



2450	Head	MHz	$\epsilon_r = 39.2 \pm 5\%$	$\sigma = 1.80 \pm 5\% \text{ mho/m}$
	ConvF X	$5.0 \pm 8.9\% (k=2)$	Boundary effect:	
	ConvF Y	$5.0 \pm 8.9\% (k=2)$	Alpha	0.98
	ConvF Z	$5.0 \pm 8.9\% (k=2)$	Depth	1.95
2450	Body	MHz	$\epsilon_r = 52.7 \pm 5\%$	$\sigma = 1.95 \pm 5\% \text{ mho/m}$
	ConvF X	$4.5 \pm 8.9\% (k=2)$	Boundary effect:	
	ConvF Y	$4.5 \pm 8.9\% (k=2)$	Alpha	1.01
	ConvF Z	$4.5 \pm 8.9\% (k=2)$	Depth	1.80

Uncertainty Analysis

DASY4 Uncertainty Budget According to IEEE P1528 [1]								
Error Description	Uncertainty value	Prob. Dist.	Div.	(c_i) 1g	(c_i) 10g	Std. Unc. (1g)	Std. Unc. (10g)	(v_i) v_{eff}
Measurement System								
Probe Calibration	±4.8 %	N	1	1	1	±4.8 %	±4.8 %	∞
Axial Isotropy	±4.7 %	R	√3	0.7	0.7	±1.9 %	±1.9 %	∞
Hemispherical Isotropy	±9.6 %	R	√3	0.7	0.7	±3.9 %	±3.9 %	∞
Boundary Effects	±1.0 %	R	√3	1	1	±0.6 %	±0.6 %	∞
Linearity	±4.7 %	R	√3	1	1	±2.7 %	±2.7 %	∞
System Detection Limits	±1.0 %	R	√3	1	1	±0.6 %	±0.6 %	∞
Readout Electronics	±1.0 %	N	1	1	1	±1.0 %	±1.0 %	∞
Response Time	±0.8 %	R	√3	1	1	±0.5 %	±0.5 %	∞
Integration Time	±2.6 %	R	√3	1	1	±1.5 %	±1.5 %	∞
RF Ambient Conditions	±3.0 %	R	√3	1	1	±1.7 %	±1.7 %	∞
Probe Positioner	±0.4 %	R	√3	1	1	±0.2 %	±0.2 %	∞
Probe Positioning	±2.9 %	R	√3	1	1	±1.7 %	±1.7 %	∞
Max. SAR Eval.	±1.0 %	R	√3	1	1	±0.6 %	±0.6 %	∞
Test Sample Related								
Device Positioning	±2.9 %	N	1	1	1	±2.9 %	±2.9 %	875
Device Holder	±3.6 %	N	1	1	1	±3.6 %	±3.6 %	5
Power Drift	±5.0 %	R	√3	1	1	±2.9 %	±2.9 %	∞
Phantom and Setup								
Phantom Uncertainty	±4.0 %	R	√3	1	1	±2.3 %	±2.3 %	∞
Liquid Conductivity (target)	±5.0 %	R	√3	0.64	0.43	±1.8 %	±1.2 %	∞
Liquid Conductivity (meas.)	±2.5 %	N	1	0.64	0.43	±1.6 %	±1.1 %	∞
Liquid Permittivity (target)	±5.0 %	R	√3	0.6	0.49	±1.7 %	±1.4 %	∞
Liquid Permittivity (meas.)	±2.5 %	N	1	0.6	0.49	±1.5 %	±1.2 %	∞
Combined Std. Uncertainty						±10.3 %	±10.0 %	331
Expanded STD Uncertainty						±20.6 %	±20.1 %	

Phantom description

Schmid & Partner Engineering AG

Zeughausstrasse 43, 8004 Zurich, Switzerland, Phone +41 1 245 97 00, Fax +41 1 245 97 79

Certificate of conformity / First Article Inspection

Item	SAM Twin Phantom V4.0
Type No	QD 000 P40 CA
Series No	TP-1150 and higher
Manufacturer / Origin	Untersee Composites Hauptstr. 69 CH-8559 Fruthwilen Switzerland

Tests

The series production process used allows the limitation to test of first articles. Complete tests were made on the pre-series Type No. QD 000 P40 AA, Serial No. TP-1001 and on the series first article Type No. QD 000 P40 BA, Serial No. TP-1006. Certain parameters have been retested using further series units (called samples).

Test	Requirement	Details	Units tested
Shape	Compliance with the geometry according to the CAD model.	IT1S CAD File (*)	First article, Samples
Material thickness	Compliant with the requirements according to the standards	2mm +/- 0.2mm in specific areas	First article, Samples
Material parameters	Dielectric parameters for required frequencies	200 MHz - 3 GHz Relative permittivity < 5 Loss tangent < 0.05.	Material sample TP 104-5
Material resistivity	The material has been tested to be compatible with the liquids defined in the standards	Liquid type HSL 1800 and others according to the standard.	Pre-series, First article

Standards

- [1] CENELEC EN 50361
- [2] IEEE P1528-200x draft 6.5
- [3] IEC PT 62209 draft 0.9
- (*) The IT1S CAD file is derived from [2] and is also within the tolerance requirements of the shapes of [1] and [3].

Conformity

Based on the sample tests above, we certify that this item is in compliance with the uncertainty requirements of SAR measurements specified in standard [1] and draft standards [2] and [3].

Date

28.02.2002

Signature / Stamp

F. Bernhelt

**Schmid & Partner
Engineering AG**

Zeughausstrasse 43, CH-8004 Zurich
Tel. +41 1 245 97 00, Fax +41 1 245 97 79

Johannes Kappeler

System Validation from Original equipment supplier SPEAG Schmid & Partner

Date/Time: 03/05/03 16:17:40

Test Laboratory: SPEAG, Zurich, Switzerland
File Name: SN727_SN3013_M2450_050303.da4

DUT: Dipole 2450 MHz; Serial: D2450V2 - SN727
Program: Dipole Calibration

Communication System: CW-2450; Frequency: 2450 MHz; Duty Cycle: 1:1
Medium: Muscle 2450 MHz; ($\sigma = 2.05$ mho/m, $\epsilon_r = 51.05$, $\rho = 1000$ kg/m³)
Phantom section: Flat Section

DASY4 Configuration:

- Probe: ES3DV2 - SN3013; ConvF(4.2, 4.2, 4.2); Calibrated: 1/19/2003
- Sensor-Surface: 4mm (Mechanical Surface Detection)
- Electronics: DAE3 - SN411; Calibrated: 1/16/2003
- Phantom: SAM with CRP - TP1006; Type: SAM 4.0; Serial: TP:1006
- Measurement SW: DASY4, V4.1 Build 25; Postprocessing SW: SEMCAD, V1.6 Build 105

Pin = 250 mW; d = 10 mm/Area Scan (81x81x1): Measurement grid: dx=15mm, dy=15mm

Pin = 250 mW; d = 10 mm/Zoom Scan (7x7x7)/Cube 0: Measurement grid: dx=5mm, dy=5mm, dz=5mm

Reference Value = 89.7 V/m

Peak SAR = 27.6 W/kg

SAR(1 g) = 13.7 mW/g; SAR(10 g) = 6.16 mW/g

Power Drift = 0.007 dB

