

Eee Pad User Manual

SL101

ASUS is devoted to creating environment-friendly products/ packagings to safeguard consumers' health while minimizing the impact on the environment. The reduction of the number of the manual pages complies with the reduction of carbon emission.

For the detailed user manual and related information, refer to the user manual included in the device or visit the ASUS Support Site at <http://support.asus.com/> or the Eee Pad website at <http://eee.asus.com/eeepad> for updated information.

Charging Your Batteries

If you intend to use battery power, be sure to fully charge your battery pack before going on long trips. Remember that the power adapter charges the battery pack as long as it is plugged into the computer and an AC power source. Be aware that it takes much longer to charge the battery pack when the Eee Pad is in use.

Remember to fully charge the battery (8 hours or more) before first use and whenever it is depleted to prolong battery life. The battery reaches its maximum capacity after a few full charging and discharging cycles.


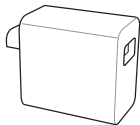


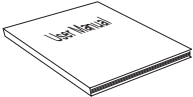
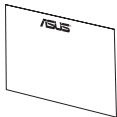
Airplane Precautions

Ask an airline personnel if you want to use your Eee Pad onboard an aircraft. Most airlines have restrictions for using electronic devices. Most airlines allow electronic use only between and not during takeoffs and landings.



There are three main types of airport security devices: X-ray machines (used on items placed on conveyor belts), magnetic detectors (used on people walking through security checks), and magnetic wands (hand-held devices used on people or individual items). You can send your Eee Pad through airport X-ray machines. But do not send your Eee Pad through airport magnetic detectors or expose it to magnetic wands.

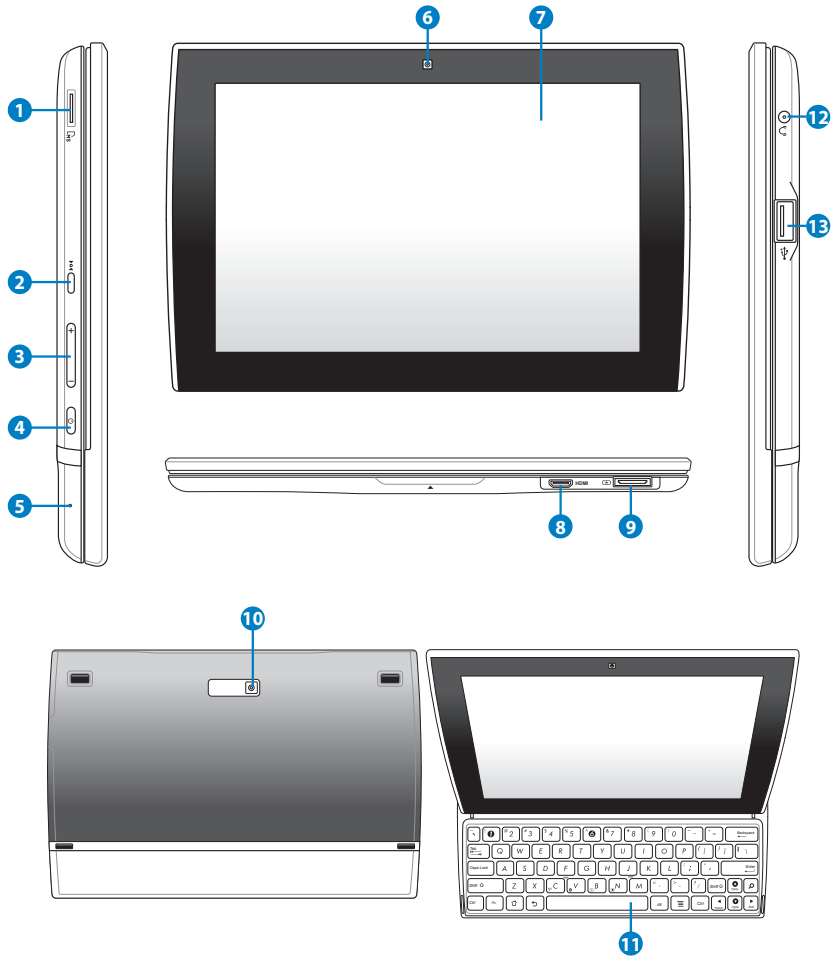
Package Contents

	
Eee Pad	USB Charger
	
Power Plug*	Docking connector to USB cable
	
User Manual	Warranty Card



- If any of the items is damaged or missing, contact your retailer.
- The power plug that comes with your Eee Pad may vary depending on your territory to fit the wall outlet.

Your Eee Pad



1 Micro SD Card Slot

Insert Micro SD card into this slot.

2 Reset Button

If the system becomes unresponsive, press the reset button to force the Eee Pad to restart.



Forcing the system to power off may result in data loss. Please inspect your data to ensure there is no data loss. It is strongly recommended that important data be backed up regularly.

3 Volume Key

Press this button to increase or decrease the system volume.

4 Power button

The power button turns your Eee Pad on/off. Hold the power button for 4 seconds and release the button to power on your Eee Pad. When the Eee Pad is powered on, press the power button to put the Eee Pad into sleep mode or wake it up from sleep mode. Hold the power button for 0.5 second to display the shutdown dialog box.

5 Built-in Microphone

The built-in mono microphone can be used for video conferencing, voice narrations, or simple audio recordings.

6 Built-in front Camera

Use the built-in camera for picture taking, video recording, video conferencing, and other interactive applications.

7 Touch Screen Panel

The touch screen panel allows you to operate your Eee Pad using multi-touch up to ten fingers.

8 mini HDMI port

Insert a mini HDMI cable into this port to connect to a high-definition multimedia interface (HDMI) device.

9 Docking Connector

- Insert the *docking connector to USB cable* to the USB charger, and then insert the cable into this port to supply power to your Eee Pad and charge the internal battery pack. To prevent damage to your Eee Pad and battery pack, always use the bundled power adapter.
- Connect the docking connector to USB cable to the Eee Pad and another system (notebook PC or desktop PC) for data transmission.

10 Built-in rear Camera

Use the built-in camera for picture taking, video recording, video conferencing, and other interactive applications.

11 Keyboard

The keyboard offers users with the better typing experience than a on-screen keyboard.



The keyboard printing differs for each territory or country.

12 Headphone Output/Microphone Input Combo Jack

The stereo combo jack (3.5mm) connects the Eee Pad's audio out signal to amplified speakers or headphones. Using this jack automatically disables the built-in speaker.

For microphone input function, the jack supports the headset microphone ONLY.

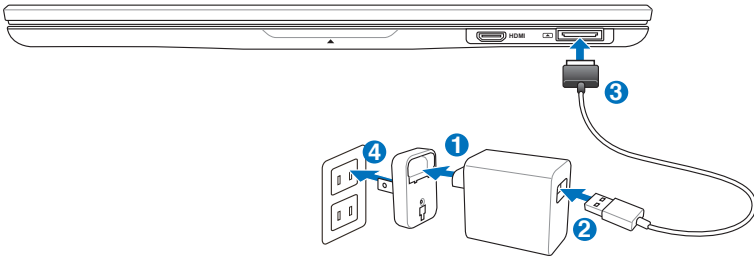
13 USB Port (2.0)

The USB (Universal Serial Bus) port is compatible with USB 2.0 or USB 1.1 devices such as keyboards, pointing devices, flash disk drive and hard disk drives.



Charging via USB: If you connect your Eee Pad to the USB port on the computer, the Eee Pad will be charged only when it is in sleep mode (screen off) or powered off.

Charging the Eee Pad



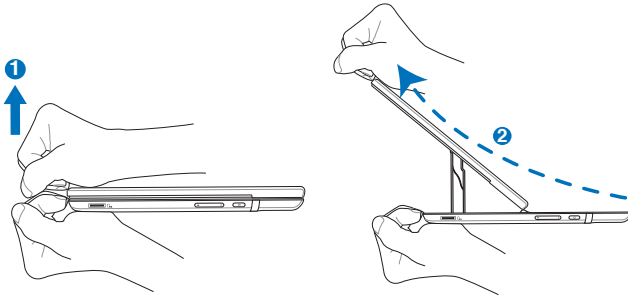
- Use only the power adapter that comes with your device. Using a different power adapter may damage your device.
- Using the provided power adapter and USB cord to connect your Eee Pad to a power outlet is the best way to charge the Eee Pad.
- The input voltage range between the wall outlet and this adapter is AC 100V–240V, and the output voltage of this adapter is DC 15V, 1.2A.



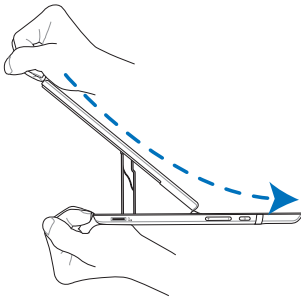
- To prolong battery life, fully charge the battery for up to 8 hours when using the Eee Pad for the first time and whenever the battery power is fully depleted.
- SL101 can be charged via the USB port on the computer only when it is in sleep mode (screen off) or powered off.
- Charging through the USB port may take longer time to complete.
- If the computer does not provide enough power for charging Eee Pad, use the wall outlet instead.

Using the Eee Pad keyboard

Follow the instructions below to slide open the keyboard.



Follow the instruction below to fold the keyboard.



Notice on carrying the Eee Pad

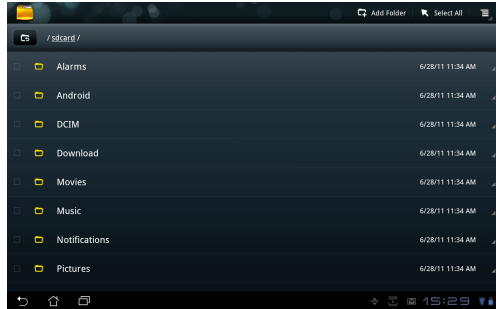
Magnets are used to enhance the stability while folding the Eee Pad. When carrying your Eee Pad inside your bag, **please avoid putting cards with magnetic stripes such as credit cards or phone cards near the areas marked in the figure to prevent demagnetization.**



Using File Manager

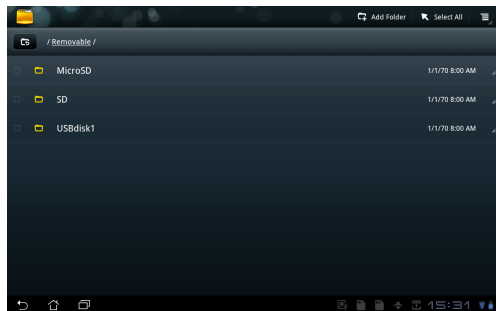
Internal storage

Open **File Manager** and the internal storage location (/sdcard/) is displayed.



Removable storage devices

In the Root Directory, locate and enter the **Removable** folder. You may see folders of the storage device(s) connected to your Eee Pad (e.g. **MicroSD** or **USBdisk1**).



Removing the external storage devices

Click the SD card or the USB device icon at the bottom right corner and click the disconnection button to safely remove the connected external storage devices.



Declarations and Safety Statements

Federal Communications Commission Statement

This device complies with part 15 of the FCC Rules. Operation is subject to the following two conditions: (1) This device may not cause harmful interference, and (2) this device must accept any interference received, including interference that may cause undesired operation.

This device has been tested and found to comply with the limits for a Class B digital device, pursuant to Part 15 of the FCC Rules. These limits are designed to provide reasonable protection against harmful interference in a residential installation. This equipment generates, uses and can radiated radio frequency energy and, if not installed and used in accordance with the instructions, may cause harmful interference to radio communications. However, there is no guarantee that interference will not occur in a particular installation. If this equipment does cause harmful interference to radio or television reception, which can be determined by turning the equipment off and on, the user is encouraged to try to correct the interference by one or more of the following measures:

- Reorient or relocate the receiving antenna.
- Increase the separation between the equipment and receiver.
- Connect the equipment into an outlet on a circuit different from that to which the receiver is connected.
- Consult the dealer or an experienced radio/TV technician for help.

Changes or modifications not expressly approved by the party responsible for compliance could void the user's authority to operate the equipment.

The antenna(s) used for this transmitter must not be co-located or operating in conjunction with any other antenna or transmitter.

RF Exposure Information (SAR)

This device meets the government's requirements for exposure to radio waves. This device is designed and manufactured not to exceed the emission limits for exposure to radio frequency (RF) energy set by the Federal Communications Commission of the U.S. Government.

The exposure standard employs a unit of measurement known as the Specific Absorption Rate, or SAR. The SAR limit set by the FCC is 1.6W/kg. Tests for SAR are conducted using standard operating positions accepted by the FCC with the EUT transmitting at the specified power level in different channels.

The highest SAR value for the device as reported to the FCC is 1.52mW/kg when placed next to the body.

The FCC has granted an Equipment Authorization for this device with all reported SAR levels evaluated as in compliance with the FCC RF exposure guidelines. SAR information on this device is on file with the FCC and can be found under the Display Grant section of www.fcc.gov/oet/ea/fccid after searching on FCC ID: MSQSL101.

This device is compliance with SAR for general population /uncontrolled exposure limits in ANSI/IEEE C95.1-1999 and had been tested in accordance with the measurement methods and procedures specified in OET Bulletin 65 Supplement C.

IC Regulations

This device complies with Industry Canada licence-exempt RSS standard(s). Operation is subject to the following two conditions: (1) this device may not cause interference, and (2) this device must accept any interference, including interference that may cause undesired operation of the device.

This Class B digital apparatus complies with Canadian ICES-003.

Cet appareil numérique de la classe B est conforme à la norme NMB-003 du Canada.

This Category II radiocommunication device complies with Industry Canada Standard RSS-310.

Ce dispositif de radiocommunication de catégorie II respecte la norme CNR-310 d'Industrie Canada.

IC Radiation Exposure Statement

This EUT is compliance with SAR for general population/uncontrolled exposure limits in IC RSS-102 and had been tested in accordance with the measurement methods and procedures specified in IEEE 1528. This equipment should be installed and operated with minimum distance 0cm between the radiator & your body.

This device and its antenna(s) must not be co-located or operating in conjunction with any other antenna or transmitter.

The County Code Selection feature is disabled for products marketed in the US/Canada.

For product available in the USA/ Canada markets, only channel 1~11 can be operated. Selection of other channels is not possible.

IC Regulations:

This device complies with Industry Canada license-exempt RSS standard(s). Operation is subject to the following two conditions:

- (1) this device may not cause interference, and
- (2) this device must accept any interference, including interference that may cause undesired operation of the device.

Le présent appareil est conforme aux CNR d'Industrie Canada applicables aux appareils radio exempts de licence. L'exploitation est autorisée aux deux conditions suivantes:

- (1) l'appareil ne doit pas produire de brouillage, et
- (2) l'utilisateur de l'appareil doit accepter tout brouillage radioélectrique subi, même si le brouillage est susceptible d'en compromettre le fonctionnement."

This Class B digital apparatus complies with Canadian ICES-003.

Cet appareil numérique de la classe B est conforme à la norme NMB-003 du Canada.

This device and its antenna(s) must not be co-located or operating in conjunction with any other antenna or transmitter.

The County Code Selection feature is disabled for products marketed in the US/Canada.

For product available in the USA/ Canada markets, only channel 1~11 can be operated. Selection of other channels is not possible.

IMPORTANT NOTE:

IC Radiation Exposure Statement

This EUT is compliance with SAR for general population/uncontrolled exposure limits in IC RSS-102 and had been tested in accordance with the measurement methods and procedures specified in IEEE 1528. This equipment should be installed and operated with minimum distance 0cm between the radiator & your body.

CE Mark Warning



CE marking for devices without wireless LAN/Bluetooth

The shipped version of this device complies with the requirements of the EEC directives 2004/108/EC "Electromagnetic compatibility" and 2006/95/EC "Low voltage directive".



CE marking for devices with wireless LAN/ Bluetooth

This equipment complies with the requirements of Directive 1999/5/EC of the European Parliament and Commission from 9 March, 1999 governing Radio and Telecommunications Equipment and mutual recognition of conformity.

Power Safety Requirement

Products with electrical current ratings up to 6A and weighing more than 3Kg must use approved power cords greater than or equal to: H05VV-F, 3G, 0.75mm² or H05VV-F, 2G, 0.75mm².

ASUS Recycling/Takeback Services

ASUS recycling and takeback programs come from our commitment to the highest standards for protecting our environment. We believe in providing solutions for you to be able to responsibly recycle our products, batteries, other components as well as the packaging materials. Please go to <http://csr.asus.com/english/Takeback.htm> for detailed recycling information in different regions.



**Risk of Explosion if Battery is Replaced by an Incorrect Type.
Dispose of Used Batteries According to the Instructions.**



DO NOT throw the battery in municipal waste. The symbol of the crossed out wheeled bin indicates that the battery should not be placed in municipal waste.



DO NOT throw the Eee Pad in municipal waste. This product has been designed to enable proper reuse of parts and recycling. The symbol of the crossed out wheeled bin indicates that the product (electrical, electronic equipment and mercury-containing button cell battery) should not be placed in municipal waste. Check local regulations for disposal of electronic products.



SAFE TEMP: This Eee Pad should only be used in environments with ambient temperatures between 0°C (32°F) and 35°C (95°F).

Copyright Information

No part of this manual, including the products and software described in it, may be reproduced, transmitted, transcribed, stored in a retrieval system, or translated into any language in any form or by any means, except documentation kept by the purchaser for backup purposes, without the express written permission of ASUSTeK COMPUTER INC. ("ASUS").

ASUS and Eee Pad logo are trademarks of ASUSTek Computer Inc. Information in this document is subject to change without notice.
Copyright © 2011 ASUSTeK COMPUTER INC. All Rights Reserved.

Limitation of Liability

Circumstances may arise where because of a default on ASUS' part or other liability, you are entitled to recover damages from ASUS. In each such instance, regardless of the basis on which you are entitled to claim damages from ASUS, ASUS is liable for no more than damages for bodily injury (including death) and damage to real property and tangible personal property; or any other actual and direct damages resulted from omission or failure of performing legal duties under this Warranty Statement, up to the listed contract price of each product.

ASUS will only be responsible for or indemnify you for loss, damages or claims based in contract, tort or infringement under this Warranty Statement.

This limit also applies to ASUS' suppliers and its reseller. It is the maximum for which ASUS, its suppliers, and your reseller are collectively responsible.

UNDER NO CIRCUMSTANCES IS ASUS LIABLE FOR ANY OF THE FOLLOWING: (1) THIRD-PARTY CLAIMS AGAINST YOU FOR DAMAGES; (2) LOSS OF, OR DAMAGE TO, YOUR RECORDS OR DATA; OR (3) SPECIAL, INCIDENTAL, OR INDIRECT DAMAGES OR FOR ANY ECONOMIC CONSEQUENTIAL DAMAGES (INCLUDING LOST PROFITS OR SAVINGS), EVEN IF ASUS, ITS SUPPLIERS OR YOUR RESELLER IS INFORMED OF THEIR POSSIBILITY.

Manufacturer	ASUSTek COMPUTER INC.
Address, City	No. 150, LI-TE RD., PEITOU, TAIPEI 112, TAIWAN R.O.C
Country	TAIWAN
Authorized Representative in Europe	ASUS COMPUTER GmbH
Address, City	HARKORT STR. 21-23, 40880 RATINGEN
Country	GERMANY