

P04 WLAN UNII-5_802.11axHE160_Right Cheek_0mm_Ch79_Ant6+3

Device under Test Properties

Model, Manufacturer	Dimensions [mm]	IMEI	DUT Type
BFLF-WTW-P20120540	172.0 x 77.9 x 8.0		Phone

Exposure Conditions

Phantom Section	Position, Test Distance [mm]	Band	Group, UID	Frequency [MHz], Channel Number	Conversion Factor
5G Air	Front Face, 0.00		CW	6345.0	1.0

Hardware Setup

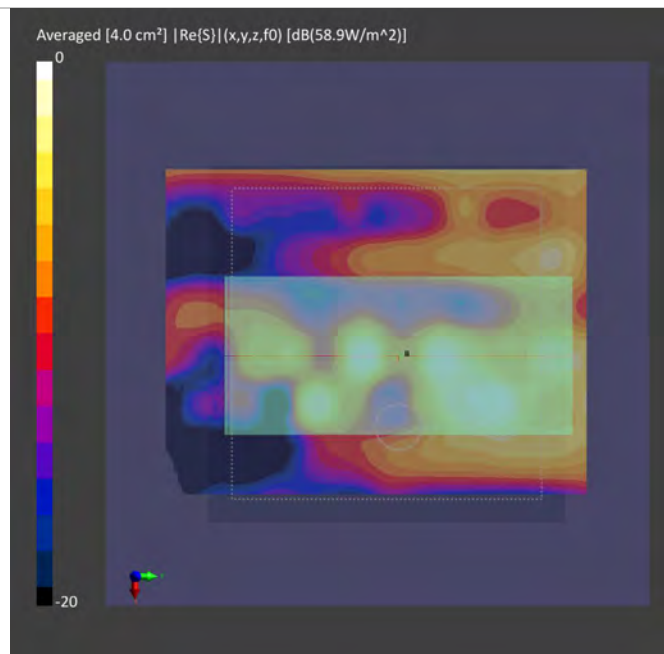
Phantom	Medium	Probe, Calibration Date	DAE, Calibration Date
mmWave- 1029	--Air-	EUmmWV4 - SN9454_F1-78GHz, 2020-09-24	DAE4 Sn1431, 2020-03-18

Scan Setup

	5G Scan
Grid Extents [mm]	120.0 x 120.0
Grid Steps [lambda]	0.25 x 0.25
Sensor Surface [mm]	2.0

Measurement Results

	5G Scan
Date	2021-02-03
Avg. Area [cm ²]	4.00
psPDn+ [W/m ²]	1.34
psPDtot+ [W/m ²]	2.05
E _{max} [V/m]	58.9
Power Drift [dB]	-0.16



P05 WLAN UNII-5_802.11axHE160_Right Cheek_0mm_Ch79_Ant6+4

Device under Test Properties

Model, Manufacturer	Dimensions [mm]	IMEI	DUT Type
BFLF-WTW-P20120540	172.0 x 77.9 x 8.0		Phone

Exposure Conditions

Phantom Section	Position, Test Distance [mm]	Band	Group, UID	Frequency [MHz], Channel Number	Conversion Factor
5G Air	Front Face, 0.00		CW	6345.0	1.0

Hardware Setup

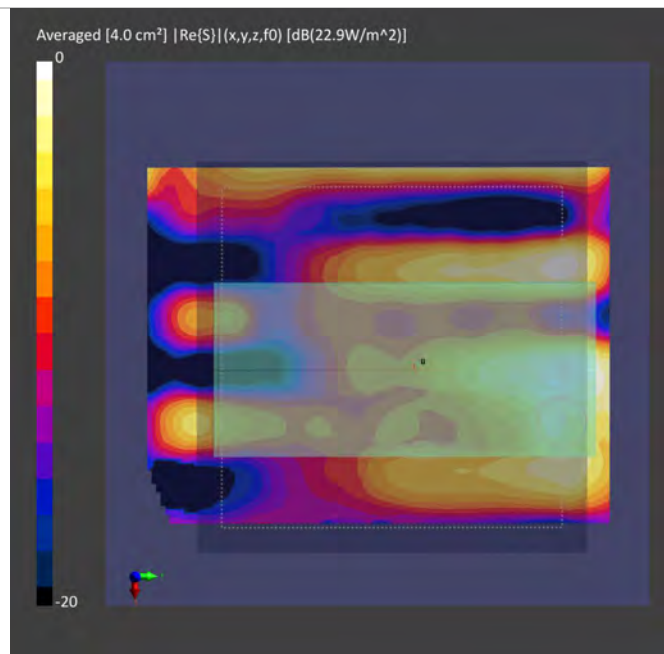
Phantom	Medium	Probe, Calibration Date	DAE, Calibration Date
mmWave- 1029	--Air-	EUmmWV4 - SN9454_F1-78GHz, 2020-09-24	DAE4 Sn1431, 2020-03-18

Scan Setup

	5G Scan
Grid Extents [mm]	120.0 x 120.0
Grid Steps [lambda]	0.25 x 0.25
Sensor Surface [mm]	2.0

Measurement Results

	5G Scan
Date	2021-02-03
Avg. Area [cm ²]	4.00
psPDn+ [W/m ²]	0.721
psPDtot+ [W/m ²]	1.85
E _{max} [V/m]	61.3
Power Drift [dB]	-0.18



P06 WLAN UNII-5_802.11axHE160_Rear Face_15mm_Ch79_Ant6

Device under Test Properties

Model, Manufacturer	Dimensions [mm]	IMEI	DUT Type
BFLF-WTW-P20120540	172.0 x 77.9 x 8.0		Phone

Exposure Conditions

Phantom Section	Position, Test Distance [mm]	Band	Group, UID	Frequency [MHz], Channel Number	Conversion Factor
5G Air	Rear Face, 15.0		CW	6345.0	1.0

Hardware Setup

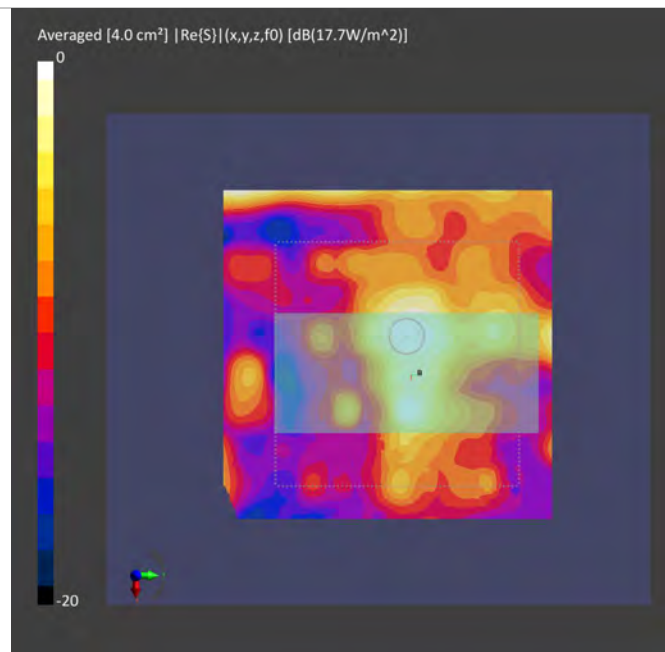
Phantom	Medium	Probe, Calibration Date	DAE, Calibration Date
mmWave- 1029	--Air-	EUmmWV4 - SN9454_F1-78GHz, 2020-09-24	DAE4 Sn1585, 2020-05-28

Scan Setup

	5G Scan
Grid Extents [mm]	120.0 x 120.0
Grid Steps [lambda]	0.25 x 0.25
Sensor Surface [mm]	15.0

Measurement Results

	5G Scan
Date	2021-03-23
Avg. Area [cm ²]	4.00
psPDn+ [W/m ²]	1.21
psPDtot+ [W/m ²]	1.30
E _{max} [V/m]	26.7
Power Drift [dB]	-0.12



P07 WLAN UNII-5_802.11axHE160_Rear Face_15mm_Ch79_Ant3

Device under Test Properties

Model, Manufacturer	Dimensions [mm]	IMEI	DUT Type
BFLF-WTW-P20120540	172.0 x 77.9 x 8.0		Phone

Exposure Conditions

Phantom Section	Position, Test Distance [mm]	Band	Group, UID	Frequency [MHz], Channel Number	Conversion Factor
5G Air	Rear Face, 15.0		CW	6345.0	1.0

Hardware Setup

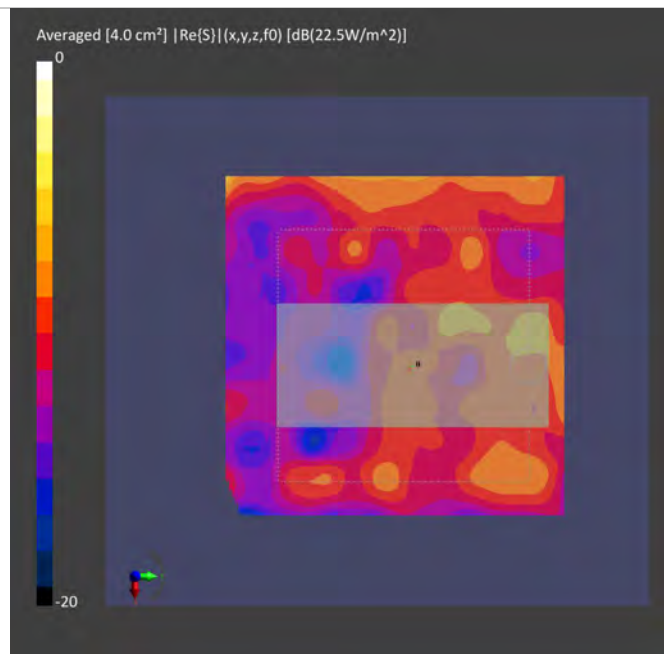
Phantom	Medium	Probe, Calibration Date	DAE, Calibration Date
mmWave- 1029	--Air-	EUmmWV4 - SN9454_F1-78GHz, 2020-09-24	DAE4 Sn1585, 2020-05-28

Scan Setup

	5G Scan
Grid Extents [mm]	120.0 x 120.0
Grid Steps [lambda]	0.25 x 0.25
Sensor Surface [mm]	15.0

Measurement Results

	5G Scan
Date	2021-03-23
Avg. Area [cm ²]	4.00
psPDn+ [W/m ²]	0.194
psPDtot+ [W/m ²]	0.210
E _{max} [V/m]	0.11



P08 WLAN UNII-5_802.11axHE160_Rear Face_15mm_Ch79_Ant4

Device under Test Properties

Model, Manufacturer	Dimensions [mm]	IMEI	DUT Type
BFLF-WTW-P20120540	172.0 x 77.9 x 8.0		Phone

Exposure Conditions

Phantom Section	Position, Test Distance [mm]	Band	Group, UID	Frequency [MHz], Channel Number	Conversion Factor
5G Air	Rear Face, 15.0		CW	6345.0	1.0

Hardware Setup

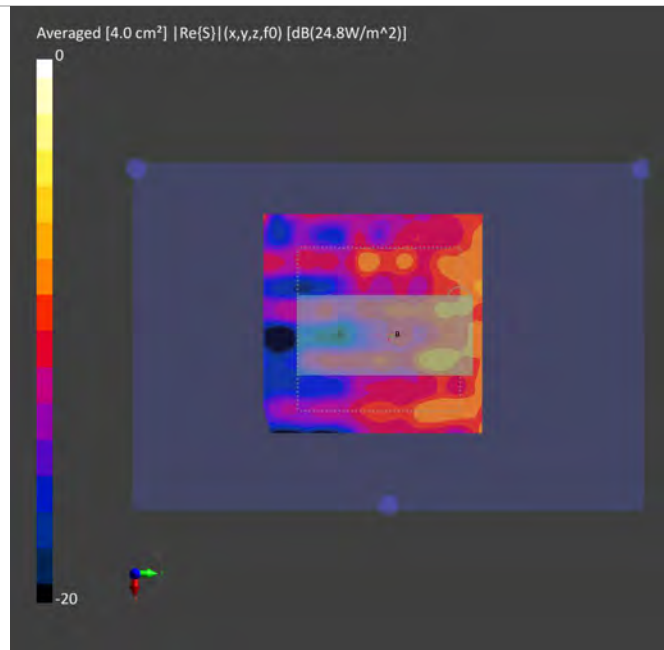
Phantom	Medium	Probe, Calibration Date	DAE, Calibration Date
mmWave- 1029	--Air-	EUmmWV4 - SN9454_F1-78GHz, 2020-09-24	DAE4 Sn1585, 2020-05-28

Scan Setup

	5G Scan
Grid Extents [mm]	120.0 x 120.0
Grid Steps [lambda]	0.25 x 0.25
Sensor Surface [mm]	15.0

Measurement Results

	5G Scan
Date	2021-03-23
Avg. Area [cm ²]	4.00
psPDn+ [W/m ²]	0.202
psPDtot+ [W/m ²]	0.227
E _{max} [V/m]	24.8
Power Drift [dB]	-0.17



P09 WLAN UNII-5_802.11axHE160_Rear Face_15mm_Ch79_Ant6+3

Device under Test Properties

Model, Manufacturer	Dimensions [mm]	IMEI	DUT Type
BFLF-WTW-P20120540	172.0 x 77.9 x 8.0		Phone

Exposure Conditions

Phantom Section	Position, Test Distance [mm]	Band	Group, UID	Frequency [MHz], Channel Number	Conversion Factor
5G Air	Rear Face, 15.00		CW	6345.0	1.0

Hardware Setup

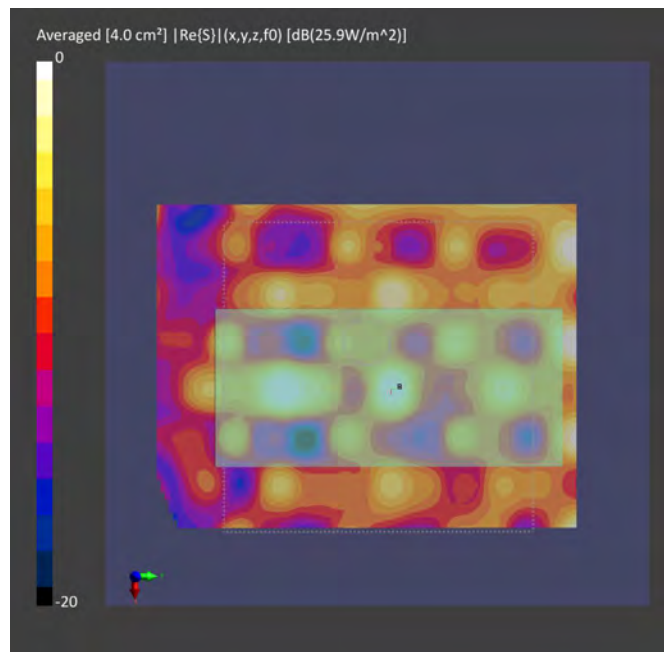
Phantom	Medium	Probe, Calibration Date	DAE, Calibration Date
mmWave- 1029	--Air-	EUmmWV4 - SN9454_F1-78GHz, 2020-09-24	DAE4 Sn861, 2020-05-27

Scan Setup

	5G Scan
Grid Extents [mm]	120.0 x 120.0
Grid Steps [lambda]	0.25 x 0.25
Sensor Surface [mm]	15.0

Measurement Results

	5G Scan
Date	2021-02-04
Avg. Area [cm ²]	4.00
psPDn+ [W/m ²]	0.426
psPDtot+ [W/m ²]	0.513
E _{max} [V/m]	25.9
Power Drift [dB]	0.13



P10 WLAN UNII-5_802.11axHE160_Rear Face_15mm_Ch79_Ant6+4

Device under Test Properties

Model, Manufacturer	Dimensions [mm]	IMEI	DUT Type
BFLF-WTW-P20120540	172.0 x 77.9 x 8.0		Phone

Exposure Conditions

Phantom Section	Position, Test Distance [mm]	Band	Group, UID	Frequency [MHz], Channel Number	Conversion Factor
5G Air	Rear Face, 15.00		CW	6345.0	1.0

Hardware Setup

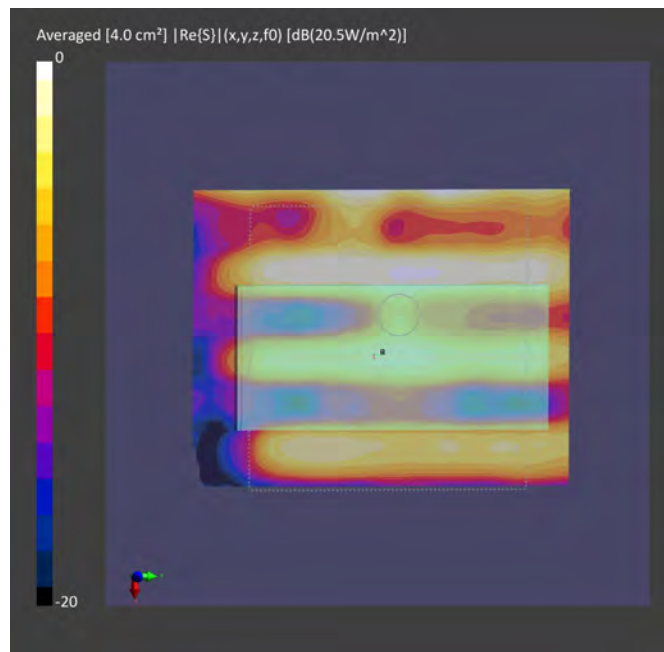
Phantom	Medium	Probe, Calibration Date	DAE, Calibration Date
mmWave- 1029	--Air-	EUmmWV4 - SN9454_F1-78GHz, 2020-09-24	DAE4 Sn861, 2020-05-27

Scan Setup

	5G Scan
Grid Extents [mm]	120.0 x 120.0
Grid Steps [lambda]	0.25 x 0.25
Sensor Surface [mm]	15.0

Measurement Results

	5G Scan
Date	2021-02-04
Avg. Area [cm ²]	4.00
psPDn+ [W/m ²]	0.577
psPDtot+ [W/m ²]	0.610
E _{max} [V/m]	18.7
Power Drift [dB]	0.18



Test Lab: Bureau Veritas ADT SAR/HAC/PD Testing Lab

Power Density Plot No.:

P11 WLAN UNII-5_802.11ax HE160_Rear Face_0mm_Ch47_Ant6

Device under Test Properties

Name, Manufacturer	Dimensions [mm]	IMEI	DUT Type
BFLF-WTW-P20120540	172.0 x 77.9 x 8.0		Phone

Exposure Conditions

Phantom Section	Position, Test Distance [mm]	Band	Group, UID	Frequency [MHz], Channel Number	Conversion Factor
5GAir	Rear Face 0.00		cw	6185.0	1.0

Hardware Setup

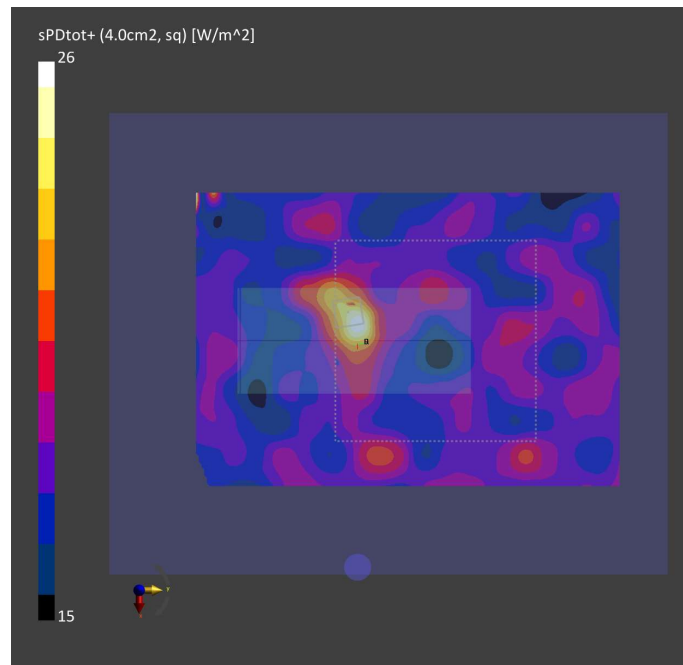
Phantom	Medium	Probe, Calibration Date	DAE, Calibration Date
mmWave- 1030	--Air-	EUmmWV3 - SN9361_F1-78GHz, 2020-09-24	DAE4 Sn1431, 2021-03-24

Scan Setup

	5G Scan
Grid Extents [mm]	120.0 x 120.0
Grid Steps [lambda]	0.25 x 0.25
Sensor Surface [mm]	2.0

Measurement Results

	5G Scan
Date	2021-06-02
Avg. Area [cm ²]	4.00
pStotavg[W/m ²]	3.35
pSnavg [W/m ²]	3.04
E _{peak} [V/m]	51.1
Power Drift [dB]	-0.12



Test Lab: Bureau Veritas ADT SAR/HAC/PD Testing Lab

Power Density Plot No.:

P12 WLAN UNII-5_802.11ax HE160_Rear Face_0mm_Ch47_Ant3

Device under Test Properties

Name, Manufacturer	Dimensions [mm]	IMEI	DUT Type
BFLF-WTW-P20120540	172.0 x 77.9 x 8.0		Phone

Exposure Conditions

Phantom Section	Position, Test Distance [mm]	Band	Group, UID	Frequency [MHz], Channel Number	Conversion Factor
5GAir	Rear Face 2.00		CW	6185.0	1.0

Hardware Setup

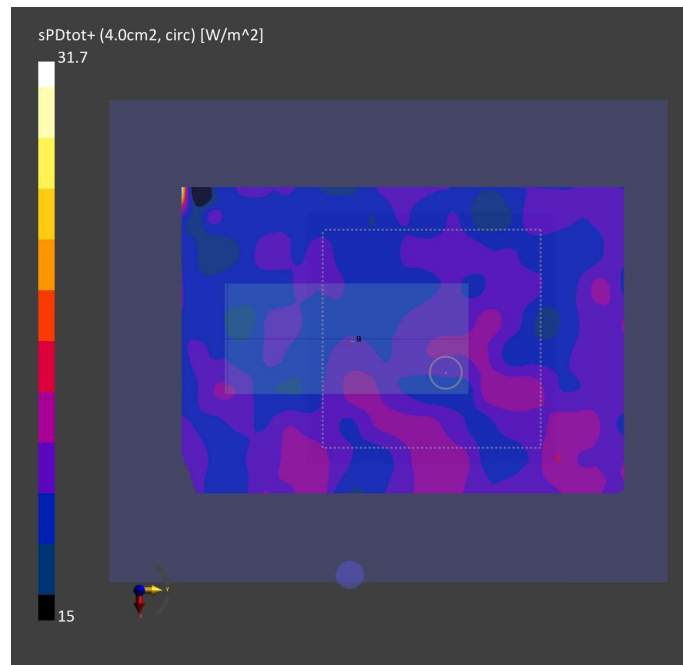
Phantom	Medium	Probe, Calibration Date	DAE, Calibration Date
mmWave- 1030	--Air-	EUmmWV3 - SN9361_F1-78GHz, 2020-09-24	DAE4 Sn1431, 2021-03-24

Scan Setup

	5G Scan
Grid Extents [mm]	120.0 x 120.0
Grid Steps [lambda]	0.25 x 0.25
Sensor Surface [mm]	2.0

Measurement Results

	5G Scan
Date	2021-06-02
Avg. Area [cm ²]	4.00
pStotavg[W/m ²]	0.749
pSnavg [W/m ²]	0.698
E _{peak} [V/m]	22.2
Power Drift [dB]	0.14



Test Lab: Bureau Veritas ADT SAR/HAC/PD Testing Lab

Power Density Plot No.:

P13 WLAN UNII-5_802.11ax HE160_Rear Face_0mm_Ch47_Ant4

Device under Test Properties

Name, Manufacturer	Dimensions [mm]	IMEI	DUT Type
BFLF-WTW-P20120540	172.0 x 77.9 x 8.0		Phone

Exposure Conditions

Phantom Section	Position, Test Distance [mm]	Band	Group, UID	Frequency [MHz], Channel Number	Conversion Factor
5GAir	Rear Face 2.00		CW	6185.0	1.0

Hardware Setup

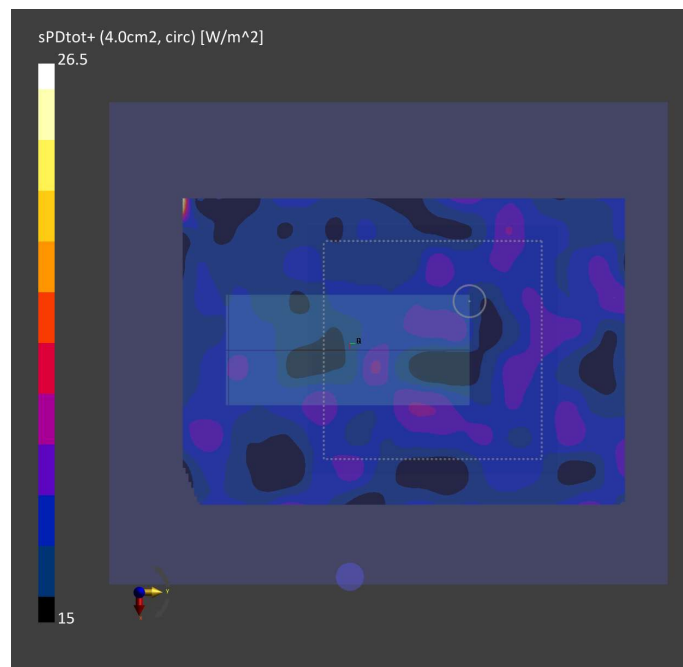
Phantom	Medium	Probe, Calibration Date	DAE, Calibration Date
mmWave	--Air--	EUmmWV3 - SN9361_F1-78GHz, 2020-09-24	DAE4 Sn1431, 2021-03-24

Scan Setup

	5G Scan
Grid Extents [mm]	120.0 x 120.0
Grid Steps [lambda]	0.25 x 0.25
Sensor Surface [mm]	2.0
	N/A

Measurement Results

	5G Scan
Date	2021-06-02
Avg. Area [cm ²]	4.00
pStotavg[W/m ²]	0.430
pSnavg [W/m ²]	0.415
E _{peak} [V/m]	20.3
Power Drift [dB]	2.05



P14 WLAN UNII-5_802.11axHE160_Rear Face_0mm_Ch47_Ant6+3

Device under Test Properties

Model, Manufacturer	Dimensions [mm]	IMEI	DUT Type
BFLF-WTW-P20120540	158.2 x 77.9 x 8.0		Phone

Exposure Conditions

Phantom Section	Position, Test Distance [mm]	Band	Group, UID	Frequency [MHz], Channel Number	Conversion Factor
5G Air	Rear Face, 0.00		CW	6185.0	1.0

Hardware Setup

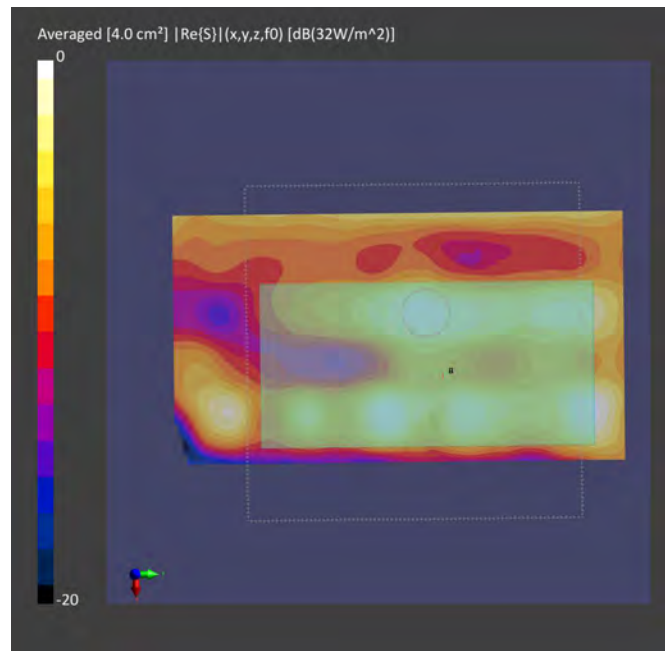
Phantom	Medium	Probe, Calibration Date	DAE, Calibration Date
mmWave- 1029	--Air-	EUmmWV4 - SN9454_F1-78GHz, 2020-09-24	DAE4 Sn1431, 2020-03-18

Scan Setup

	5G Scan
Grid Extents [mm]	120.0 x 120.0
Grid Steps [lambda]	0.25 x 0.25
Sensor Surface [mm]	2.0

Measurement Results

	5G Scan
Date	2021-02-03
Avg. Area [cm ²]	4.00
psPDn+ [W/m ²]	2.30
psPDtot+ [W/m ²]	2.82
E _{max} [V/m]	52.3
Power Drift [dB]	-0.13



P15 WLAN UNII-5_802.11axHE160_Rear Face_0mm_Ch79_Ant6+4

Device under Test Properties

Model, Manufacturer	Dimensions [mm]	IMEI	DUT Type
BFLF-WTW-P20120540	158.2 x 77.9 x 8.0		Phone

Exposure Conditions

Phantom Section	Position, Test Distance [mm]	Band	Group, UID	Frequency [MHz], Channel Number	Conversion Factor
5G Air	Rear Face, 0.00		CW	6345.0	1.0

Hardware Setup

Phantom	Medium	Probe, Calibration Date	DAE, Calibration Date
mmWave- 1029	--Air-	EUmmWV4 - SN9454_F1-78GHz, 2020-09-24	DAE4 Sn1431, 2020-03-18

Scan Setup

	5G Scan
Grid Extents [mm]	120.0 x 120.0
Grid Steps [lambda]	0.25 x 0.25
Sensor Surface [mm]	2.0
MAIA	N/A

Measurement Results

	5G Scan
Date	2021-02-02
Avg. Area [cm ²]	4.00
psPDn+ [W/m ²]	1.95
psPDtot+ [W/m ²]	2.10
E _{max} [V/m]	36.5
Power Drift [dB]	-0.19

