

## System Check\_Head\_835MHz

Communication System: ; Frequency: 835.0

Medium: HSL\_850\_210422. Medium parameters used:  $f = 835.0$  MHz;  $\sigma = 0.91$  S/m;  $\epsilon_r = 40.5$

Ambient Temperature: 23.5°C; Liquid Temperature: 22.5°C

DASY6 Configuration:

- Probe: EX3DV4 - SN3931; ConvF(9.81, 9.81, 9.81); Calibrated: 2020-10-22
- Sensor-Surface: 1.4 mm
- Electronics: DAE4 Sn1424; Calibrated: 2021-01-19
- Phantom: Twin-SAM V4.0 (30deg probe tilt); Serial: 1489; Section: Flat
- Measurement Software: cDASY6 V6.6.0.13926
- UID: CW, 0--
- MAIA: Area Scan: N/A; Zoom Scan: N/A

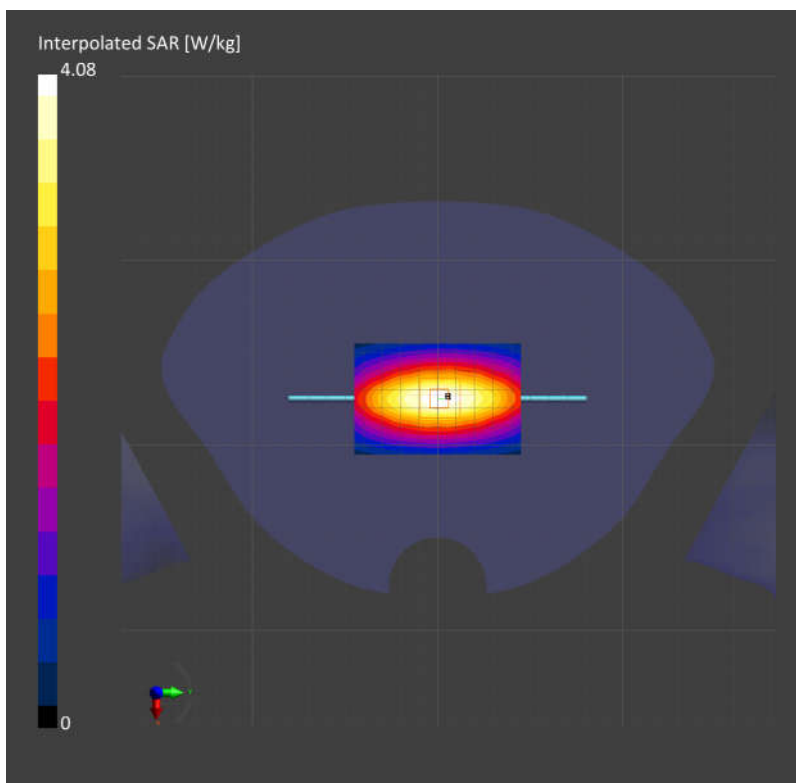
**Area Scan (60.0 mm x 90.0 mm):** Measurement Grid: 15.0 mm x 15.0 mm

SAR (1g) = 2.58 W/kg; SAR (10g) = 1.69 W/kg;

**Zoom Scan (32.0 mm x 32.0 mm x 30.0 mm):** Measurement Grid: 6.0 mm x 6.0 mm x 1.5 mm

Power Drift = -0.00 dB

SAR (1g) = 2.60 W/kg; SAR (10g) = 1.70 W/kg;



## System Check\_Head\_1900MHz

Communication System: ; Frequency: 1900.0

Medium: HSL\_1900\_210422. Medium parameters used:  $f= 1900.0$  MHz;  $\sigma= 1.43$  S/m;  $\epsilon_r = 41.0$

Ambient Temperature: 23.5°C; Liquid Temperature: 22.5°C

DASY6 Configuration:

- Probe: EX3DV4 - SN3931; ConvF(8.15, 8.15, 8.15); Calibrated: 2020-10-22
- Sensor-Surface: 1.4 mm
- Electronics: DAE4 Sn1424; Calibrated: 2021-01-19
- Phantom: Twin-SAM V4.0 (30deg probe tilt); Serial: 1489; Section: Flat
- Measurement Software: cDASY6 V6.6.0.13926
- UID: CW, 0--
- MAIA: Area Scan: N/A; Zoom Scan: N/A

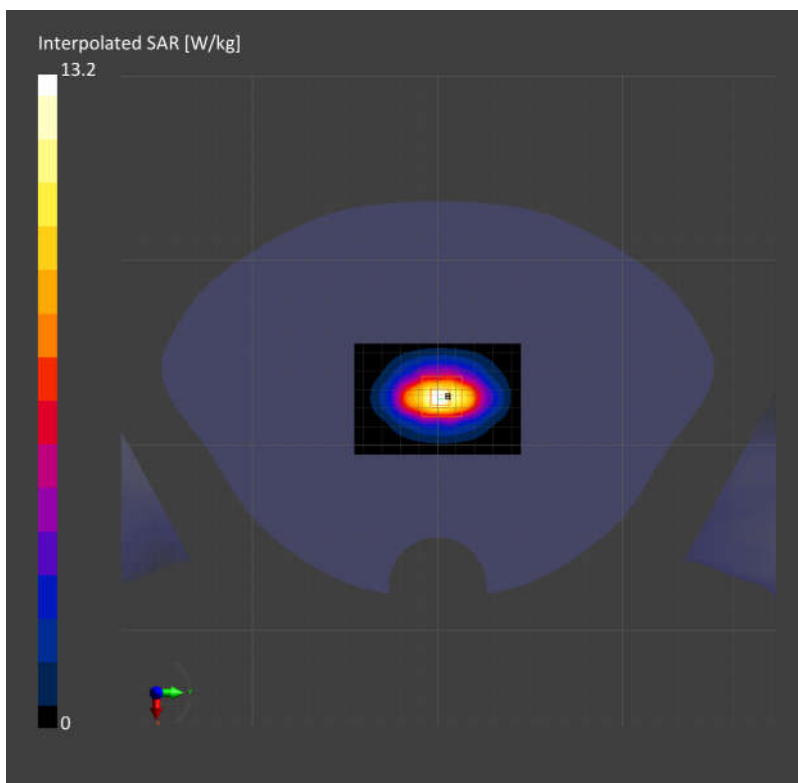
**Area Scan (60.0 mm x 90.0 mm):** Measurement Grid: 15.0 mm x 15.0 mm

SAR (1g) = 10.5 W/kg; SAR (10g) = 5.40 W/kg;

**Zoom Scan (32.0 mm x 32.0 mm x 30.0 mm):** Measurement Grid: 6.0 mm x 6.0 mm x 1.5 mm

Power Drift = -0.01 dB

SAR (1g) = 10.7 W/kg; SAR (10g) = 5.56 W/kg;



## System Check\_Head\_2600MHz

Communication System: ; Frequency: 2600.0

Medium: HSL\_2600\_210423. Medium parameters used:  $f= 2600.0$  MHz;  $\sigma= 1.95$  S/m;  $\epsilon_r = 38.5$

Ambient Temperature: 23.5°C; Liquid Temperature: 22.5°C

DASY6 Configuration:

- Probe: EX3DV4 - SN3931; ConvF(7.37, 7.37, 7.37); Calibrated: 2020-10-22
- Sensor-Surface: 1.4 mm
- Electronics: DAE4 Sn1424; Calibrated: 2021-01-19
- Phantom: Twin-SAM V4.0 (30deg probe tilt); Serial: 1489; Section: Flat
- Measurement Software: cDASY6 V6.6.0.13926
- UID: CW, 0--
- MAIA: Area Scan: N/A; Zoom Scan: N/A

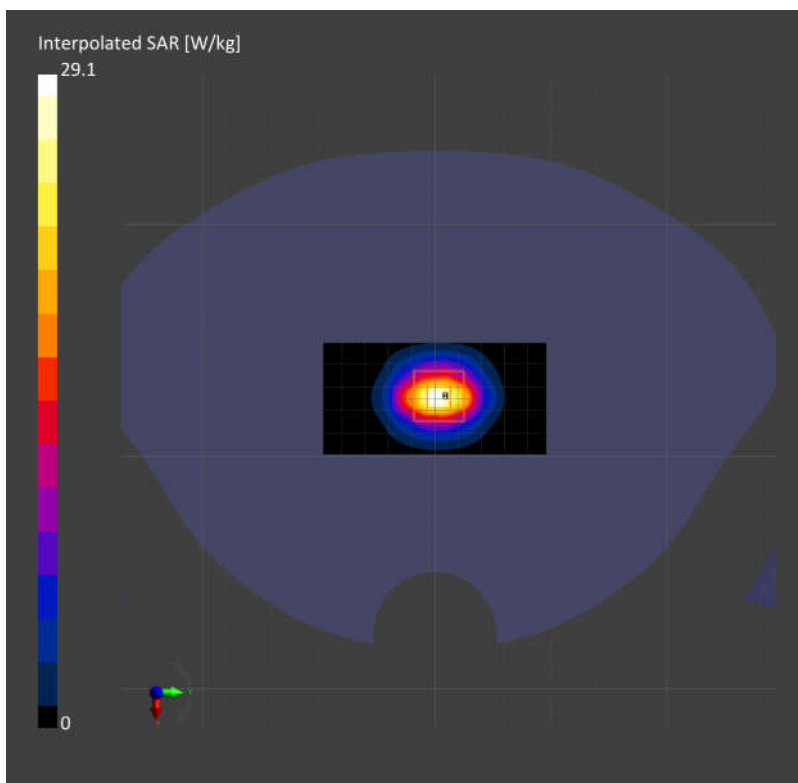
**Area Scan (48.0 mm x 96.0 mm):** Measurement Grid: 12.0 mm x 12.0 mm

SAR (1g) = 13.4 W/kg; SAR (10g) = 5.95 W/kg;

**Zoom Scan (30.0 mm x 30.0 mm x 30.0 mm):** Measurement Grid: 5.0 mm x 5.0 mm x 1.5 mm

Power Drift = -0.00 dB

SAR (1g) = 13.7 W/kg; SAR (10g) = 6.15 W/kg;



## System Check\_Head\_3500MHz\_210420

Communication System: ; Frequency: 3500.0

Medium: HSL\_3500\_210420. Medium parameters used:  $f= 3500.0$  MHz;  $\sigma= 2.95$  S/m;  $\epsilon_r = 37.8$

Ambient Temperature: 23.5°C; Liquid Temperature: 22.5°C

DASY6 Configuration:

- Probe: EX3DV4 - SN3728; ConvF(6.56, 6.56, 6.56); Calibrated: 2021-02-23
- Sensor-Surface: 1.4 mm
- Electronics: DAE4 Sn1424; Calibrated: 2021-01-19
- Phantom: Twin-SAM V4.0 (30deg probe tilt); Serial: 1489; Section: Flat
- Measurement Software: cDASY6 V6.6.0.13926
- UID: CW, 0--
- MAIA: Area Scan: N/A; Zoom Scan: N/A

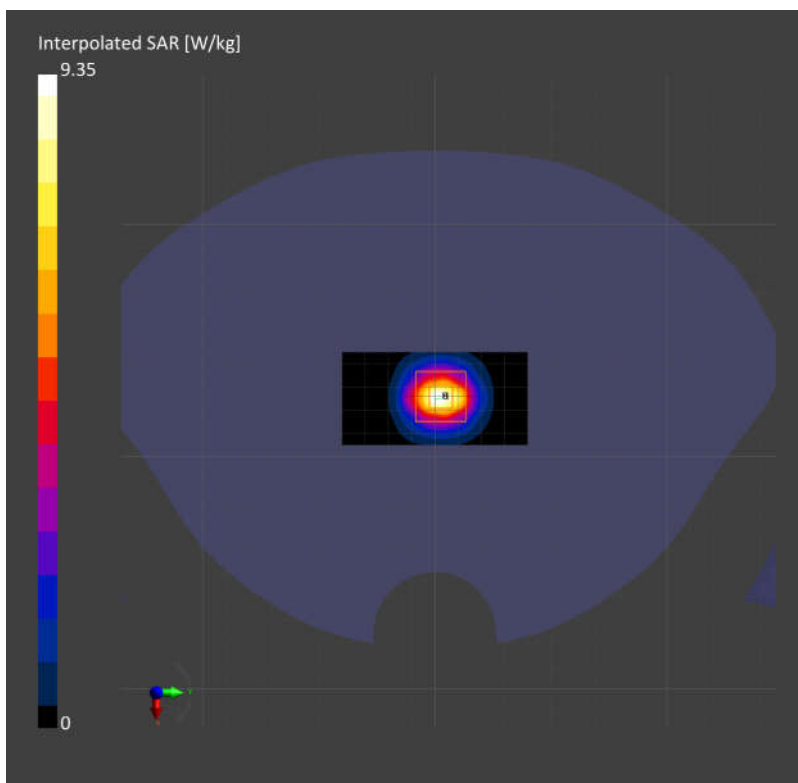
**Area Scan (40.0 mm x 80.0 mm):** Measurement Grid: 10.0 mm x 10.0 mm

SAR (1g) = 6.66 W/kg; SAR (10g) = 2.55 W/kg;

**Zoom Scan (28.0 mm x 28.0 mm x 28.0 mm):** Measurement Grid: 5.0 mm x 5.0 mm x 1.4 mm

Power Drift = -0.01 dB

SAR (1g) = 6.82 W/kg; SAR (10g) = 2.61 W/kg;



## System Check\_Head\_3700MHz\_210420

Communication System: ; Frequency: 3700.0

Medium: HSL\_3700\_210420. Medium parameters used:  $f= 3700.0$  MHz;  $\sigma= 3.18$  S/m;  $\epsilon_r = 37.9$

Ambient Temperature: 23.5°C; Liquid Temperature: 22.5°C

DASY6 Configuration:

- Probe: EX3DV4 - SN3728; ConvF(6.49, 6.49, 6.49); Calibrated: 2021-02-23
- Sensor-Surface: 1.4 mm
- Electronics: DAE4 Sn1424; Calibrated: 2021-01-19
- Phantom: Twin-SAM V4.0 (30deg probe tilt); Serial: 1489; Section: Flat
- Measurement Software: cDASY6 V6.6.0.13926
- UID: CW, 0--
- MAIA: Area Scan: N/A; Zoom Scan: N/A

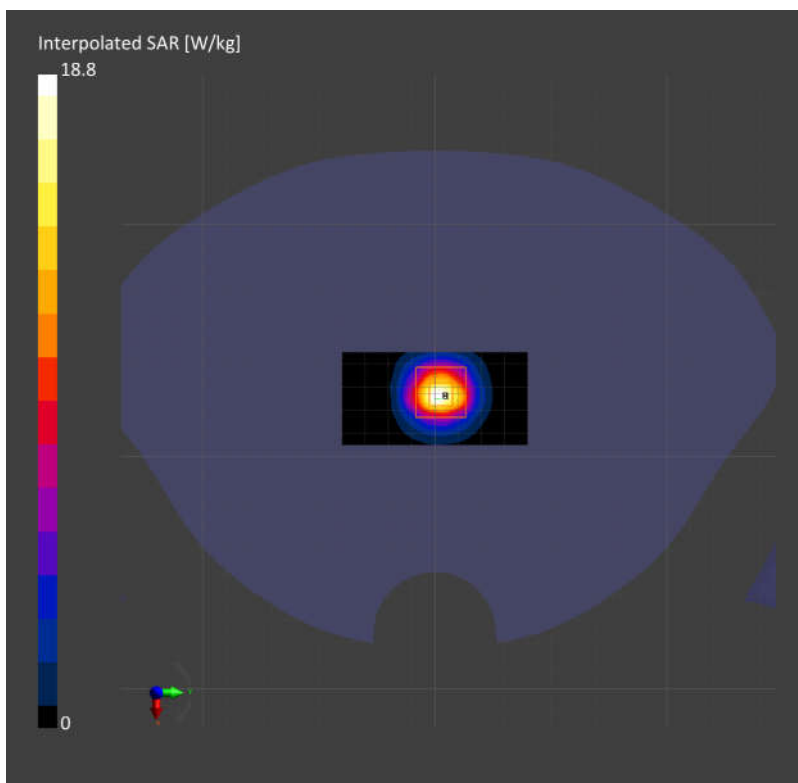
**Area Scan (40.0 mm x 80.0 mm):** Measurement Grid: 10.0 mm x 10.0 mm

SAR (1g) = 6.69 W/kg; SAR (10g) = 2.53 W/kg;

**Zoom Scan (28.0 mm x 28.0 mm x 28.0 mm):** Measurement Grid: 5.0 mm x 5.0 mm x 1.4 mm

Power Drift = 0.01 dB

SAR (1g) = 7.00 W/kg; SAR (10g) = 2.60 W/kg;



Test Laboratory: Sporton International Inc.

Device Under Test Properties

Manufacturer	Dimensions [mm]	IMEI	DUT Type
	100.0 x 100.0 x 100.0		System Verification Source

Exposure Conditions

Phantom Section	Position, Test Distance [mm]	Frequency [MHz]	Conversion Factor
5G	FRONT, 5.50	30000.0	1.0

Hardware Setup

Phantom	Medium	Probe, Calibration Date	DAE, Calibration Date
mmWave - xxxx	Air -	EUmmWV4 - SN9441_F1-78GHz, 2020-11-24	DAE4 Sn656, 2021-01-22

Scans Setup

Grid Extents [mm]	60.0 x 60.0
Grid Steps [lambda]	0.25 x 0.25
Sensor Surface [mm]	5.5

Measurement Results

Date	2021-04-23, 03:45
Avg. Area [cm <sup>2</sup> ]	4.00
S <sub>avg inc</sub> [W/m <sup>2</sup> ]	32.0
S <sub>avg tot</sub> [W/m <sup>2</sup> ]	32.5
S <sub>peak</sub> [W/m <sup>2</sup> ]	47.3
E <sub>peak</sub> [V/m]	136
H <sub>peak</sub> [A/m]	0.361
Power Drift [dB]	0.01

Averaged [4.0 cm<sup>2</sup>] |Re{S}|(x,y,z,f0) [dB(32.5W/m<sup>2</sup>)]

