

Test Lab: Bureau Veritas ADT SAR/HAC/PD Testing Lab

Power Density Plot No.:

P27 5G NR n260_CW_Left Side_2mm_Ch2278331_Ant 2_Beam ID 25

Device under Test Properties

Name, Manufacturer	Dimensions [mm]	IMEI	DUT Type
WTW-P20120540	172.0 x 77.0 x 8.0		Phone

Exposure Conditions

Phantom Section	Position, Test Distance [mm]	Band	Group, UID	Frequency [MHz], Channel Number	Conversion Factor
5GAir	Left Side 2.00	n260	CW	39949.9	1.0

Hardware Setup

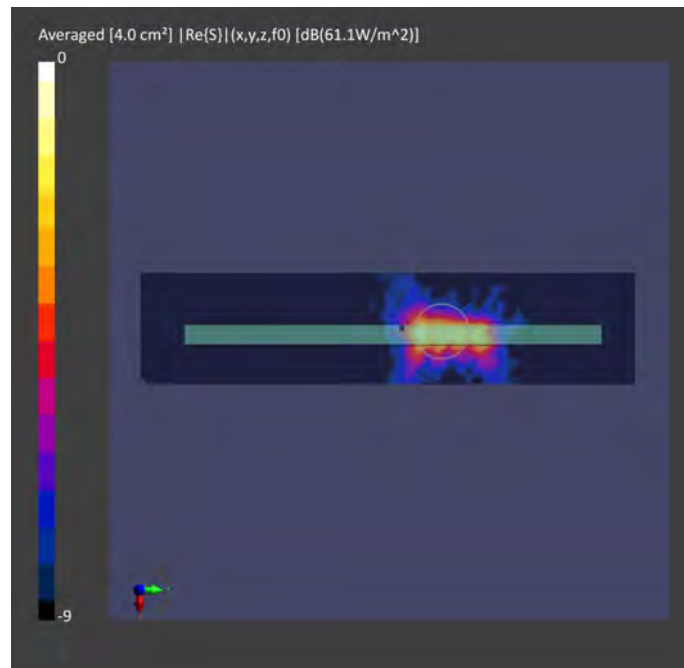
Phantom	Medium	Probe, Calibration Date	DAE, Calibration Date
mmWave	--Air--	EUmmWV3 - SN9361_F1-78GHz, 2020-09-24	DAE4 Sn1589, 2020-09-15

Scan Setup

	5G Scan
Grid Extents [mm]	24.0 x 8.0
Grid Steps [lambda]	0.25 x 0.25
Sensor Surface [mm]	2.0

Measurement Results

	5G Scan
Date	2021-03-06
Avg. Area [cm ²]	4.00
pStotavg [W/m ²]	2.17
pSnavg [W/m ²]	1.73
E _{peak} [V/m]	61.1



Test Lab: Bureau Veritas ADT SAR/HAC/PD Testing Lab

Power Density Plot No.:

P28 5G NR n260_CW_Left Side_2mm_Ch2278331_Ant 2_Beam ID 36

Device under Test Properties

Name, Manufacturer	Dimensions [mm]	IMEI	DUT Type
WTW-P20120540	172.0 x 77.0 x 8.0		Phone

Exposure Conditions

Phantom Section	Position, Test Distance [mm]	Band	Group, UID	Frequency [MHz], Channel Number	Conversion Factor
5GAir	Left Side 2.00	n260	CW	39949.9	1.0

Hardware Setup

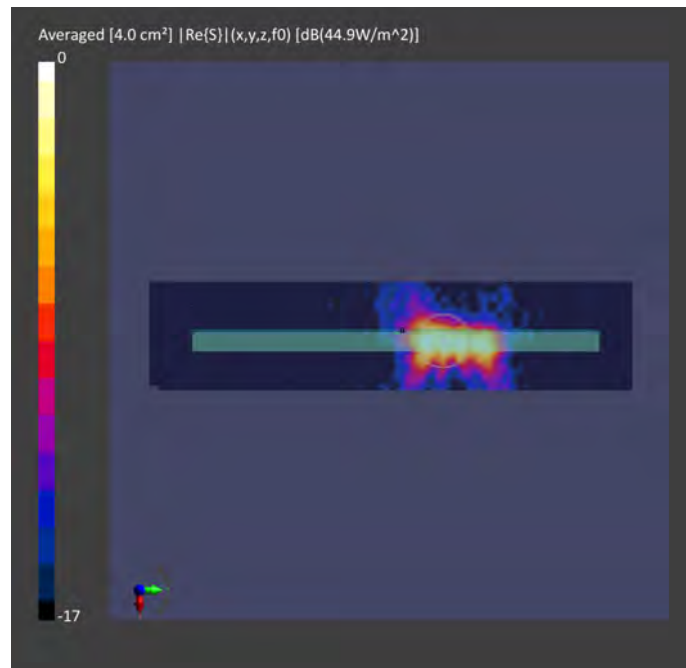
Phantom	Medium	Probe, Calibration Date	DAE, Calibration Date
mmWave	--Air--	EUmmWV3 - SN9361_F1-78GHz, 2020-09-24	DAE4 Sn1589, 2020-09-15

Scan Setup

	5G Scan
Grid Extents [mm]	24.0 x 6.0
Grid Steps [lambda]	0.25 x 0.25
Sensor Surface [mm]	2.0

Measurement Results

	5G Scan
Date	2021-03-06
Avg. Area [cm ²]	4.00
pStotavg[W/m ²]	2.07
pSnavg [W/m ²]	1.58
E _{peak} [V/m]	59.9



Test Lab: Bureau Veritas ADT SAR/HAC/PD Testing Lab

Power Density Plot No.:

P29 5G NR n260_CW_Left Side_2mm_Ch2278331_Ant 2_Beam ID 164

Device under Test Properties

Name, Manufacturer	Dimensions [mm]	IMEI	DUT Type
WTW-P20120540	172.0 x 77.0 x 8.0		Phone

Exposure Conditions

Phantom Section	Position, Test Distance [mm]	Band	Group, UID	Frequency [MHz], Channel Number	Conversion Factor
5GAir	Left Side 2.00	n260	CW	39949.9	1.0

Hardware Setup

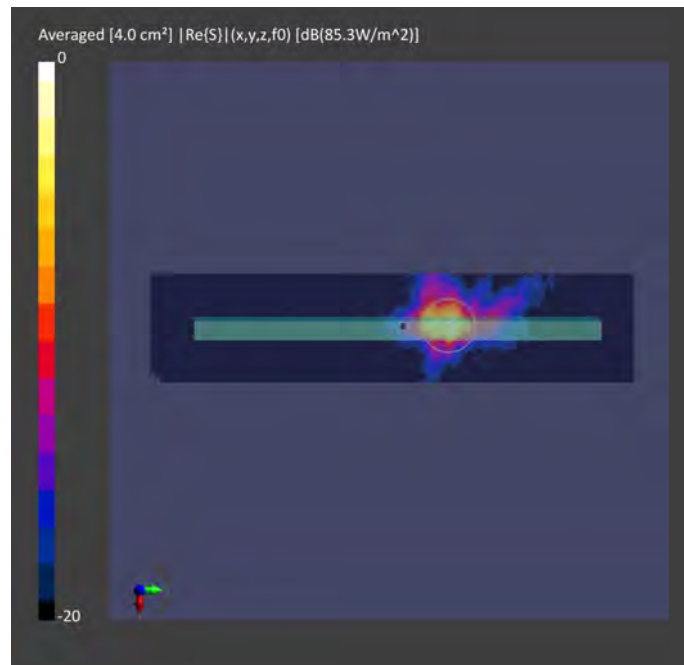
Phantom	Medium	Probe, Calibration Date	DAE, Calibration Date
mmWave	--Air--	EUmmWV3 - SN9361_F1-78GHz, 2020-09-24	DAE4 Sn1589, 2020-09-15

Scan Setup

	5G Scan
Grid Extents [mm]	4.0 x 4.0
Grid Steps [lambda]	0.25 x 0.25
Sensor Surface [mm]	2.0

Measurement Results

	5G Scan
Date	2021-03-06
Avg. Area [cm ²]	4.00
pStotavg [W/m ²]	3.82
pSnavg [W/m ²]	3.13
E _{peak} [V/m]	85.3



Test Lab: Bureau Veritas ADT SAR/HAC/PD Testing Lab

Power Density Plot No.:

P30 5G NR n260_CW_Left Side_2mm_Ch2278331_Ant 2_Beam ID 24 152

Device under Test Properties

Name, Manufacturer	Dimensions [mm]	IMEI	DUT Type
WTW-P20120540	172.0 x 77.0 x 8.0		Phone

Exposure Conditions

Phantom Section	Position, Test Distance [mm]	Band	Group, UID	Frequency [MHz], Channel Number	Conversion Factor
5GAir	Left Side 2.00	n260	CW	39949.9	1.0

Hardware Setup

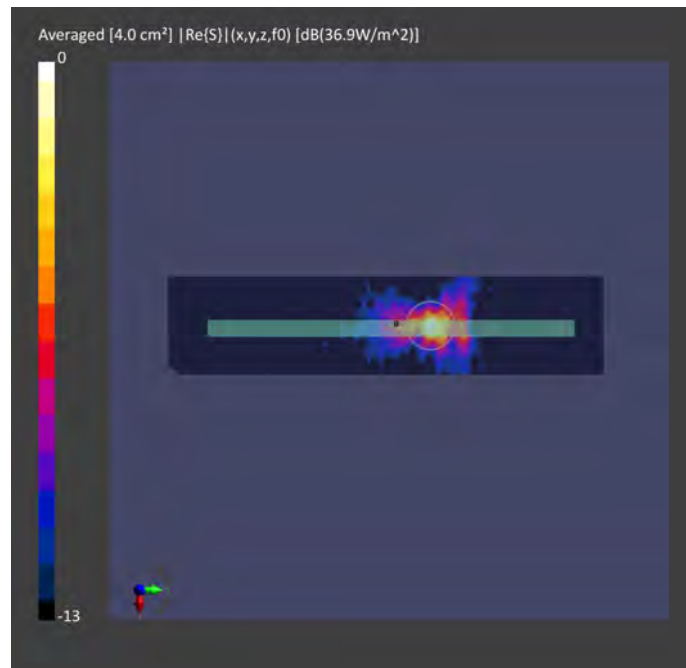
Phantom	Medium	Probe, Calibration Date	DAE, Calibration Date
mmWave	--Air--	EUmmWV3 - SN9361_F1-78GHz, 2020-09-24	DAE4 Sn1589, 2020-09-15

Scan Setup

	5G Scan
Grid Extents [mm]	2.0 x 2.0
Grid Steps [lambda]	0.25 x 0.25
Sensor Surface [mm]	2.0

Measurement Results

	5G Scan
Date	2021-03-06
Avg. Area [cm ²]	4.00
pStotavg [W/m ²]	1.02
pSnavg [W/m ²]	0.682
E _{peak} [V/m]	46.7



Test Lab: Bureau Veritas ADT SAR/HAC/PD Testing Lab

Power Density Plot No.:

P32 5G NR n261_CW_Rear Face_2mm_Ch2071821_Ant 0_Beam ID 42

Device under Test Properties

Name, Manufacturer	Dimensions [mm]	IMEI	DUT Type
WTW-P20120540	172.0 x 77.0 x 8.0		Phone

Exposure Conditions

Phantom Section	Position, Test Distance [mm]	Band	Group, UID	Frequency [MHz], Channel Number	Conversion Factor
5GAir	Rear Face 2.00	n261	CW	27559.3	1.0

Hardware Setup

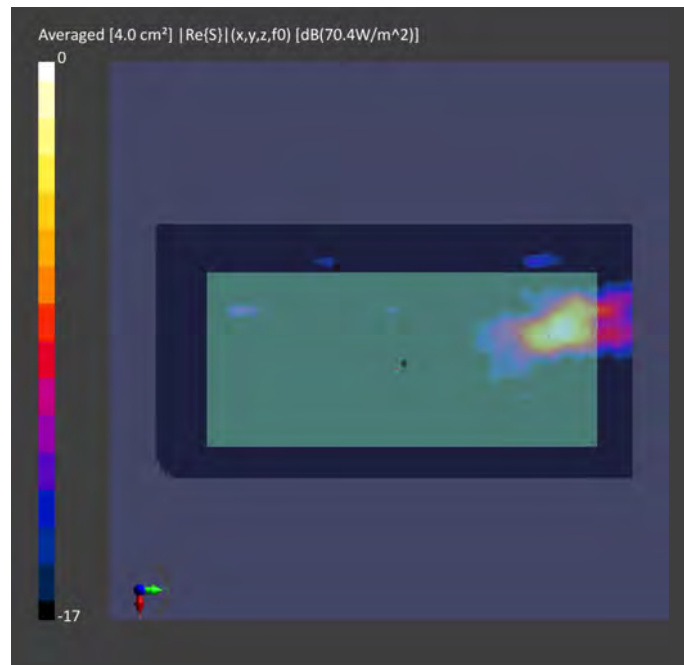
Phantom	Medium	Probe, Calibration Date	DAE, Calibration Date
mmWave	--Air--	EUmmWV3 - SN9361_F1-78GHz, 2020-09-24	DAE4 Sn1589, 2020-09-15

Scan Setup

	5G Scan
Grid Extents [mm]	10.0 x 6.0
Grid Steps [lambda]	0.25 x 0.25
Sensor Surface [mm]	2.0

Measurement Results

	5G Scan
Date	2021-02-22
Avg. Area [cm ²]	4.00
pStotavg [W/m ²]	5.77
pSnavg [W/m ²]	4.24
E _{peak} [V/m]	89.5



Test Lab: Bureau Veritas ADT SAR/HAC/PD Testing Lab

Power Density Plot No.:

P33 5G NR n261_CW_Rear Face_2mm_Ch2071821_Ant 0_Beam ID 157

Device under Test Properties

Name, Manufacturer	Dimensions [mm]	IMEI	DUT Type
WTW-P20120540	172.0 x 77.0 x 8.0		Phone

Exposure Conditions

Phantom Section	Position, Test Distance [mm]	Band	Group, UID	Frequency [MHz], Channel Number	Conversion Factor
5GAir	Rear Face 2.00	n261	CW	27559.3	1.0

Hardware Setup

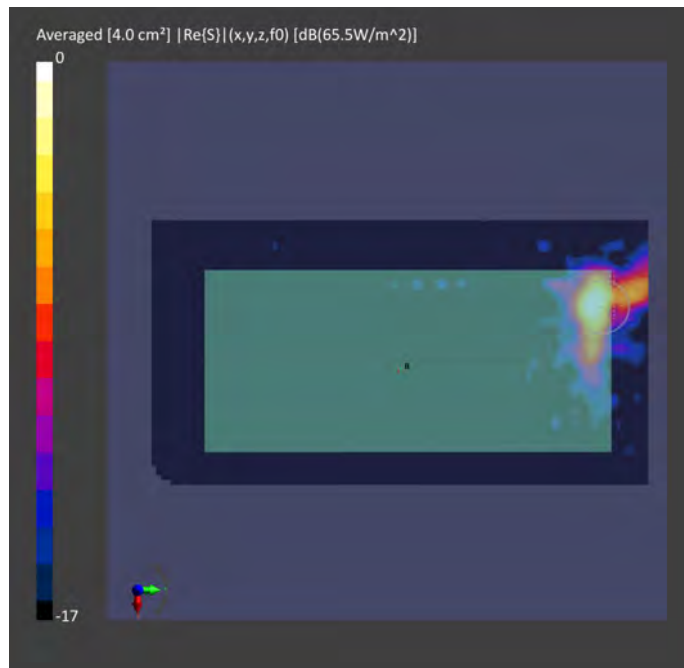
Phantom	Medium	Probe, Calibration Date	DAE, Calibration Date
mmWave	--Air--	EUmmWV3 - SN9361_F1-78GHz, 2020-09-24	DAE4 Sn1589, 2020-09-15

Scan Setup

	5G Scan
Grid Extents [mm]	4.0 x 8.0
Grid Steps [lambda]	0.25 x 0.25
Sensor Surface [mm]	2.0

Measurement Results

	5G Scan
Date	2021-02-22
Avg. Area [cm ²]	4.00
pStotavg[W/m ²]	4.59
pSnavg [W/m ²]	3.55
E _{peak} [V/m]	84.4



Test Lab: Bureau Veritas ADT SAR/HAC/PD Testing Lab

Power Density Plot No.:

P48 5G NR n261_CW_Rear Face_2mm_Ch2071821_Ant 0_Beam ID 41 169

Device under Test Properties

Name, Manufacturer	Dimensions [mm]	IMEI	DUT Type
WTW-P20120540	172.0 x 77.0 x 8.0		Phone

Exposure Conditions

Phantom Section	Position, Test Distance [mm]	Band	Group, UID	Frequency [MHz], Channel Number	Conversion Factor
5GAir	Rear Face 2.00	n261	CW	27559.3	1.0

Hardware Setup

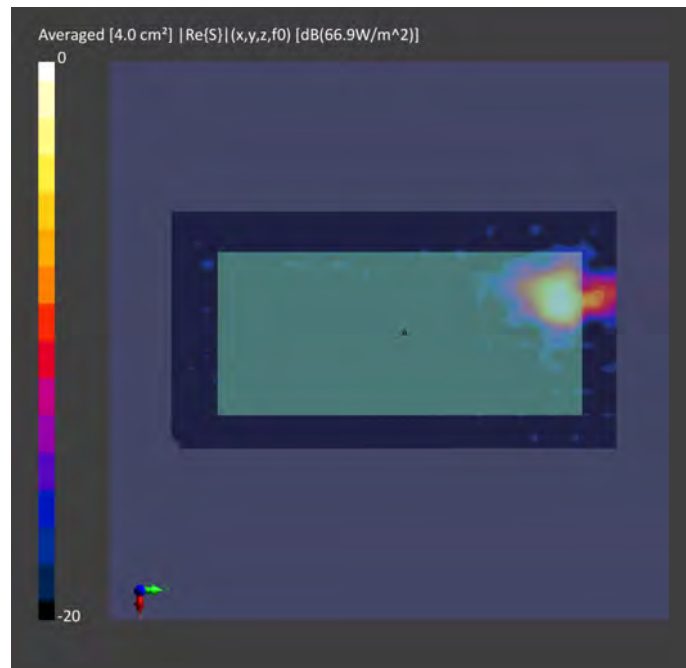
Phantom	Medium	Probe, Calibration Date	DAE, Calibration Date
mmWave	--Air--	EUmmWV3 - SN9361_F1-78GHz, 2020-09-24	DAE4 Sn1589, 2020-09-15

Scan Setup

	5G Scan
Grid Extents [mm]	8.0 x 8.0
Grid Steps [lambda]	0.25 x 0.25
Sensor Surface [mm]	2.0

Measurement Results

	5G Scan
Date	2021-02-23
Avg. Area [cm ²]	4.00
pStotavg [W/m ²]	5.62
pSnavg [W/m ²]	5.09
E _{peak} [V/m]	82.2



Test Lab: Bureau Veritas ADT SAR/HAC/PD Testing Lab

Power Density Plot No.:

P35 5G NR n261_CW_Right Side_2mm_Ch2071821_Ant 1_Beam ID 38

Device under Test Properties

Name, Manufacturer	Dimensions [mm]	IMEI	DUT Type
WTW-P20120540	172.0 x 77.0 x 8.0		Phone

Exposure Conditions

Phantom Section	Position, Test Distance [mm]	Band	Group, UID	Frequency [MHz], Channel Number	Conversion Factor
5G Air	Right Side 2.00	n261	CW	27559.3	1.0

Hardware Setup

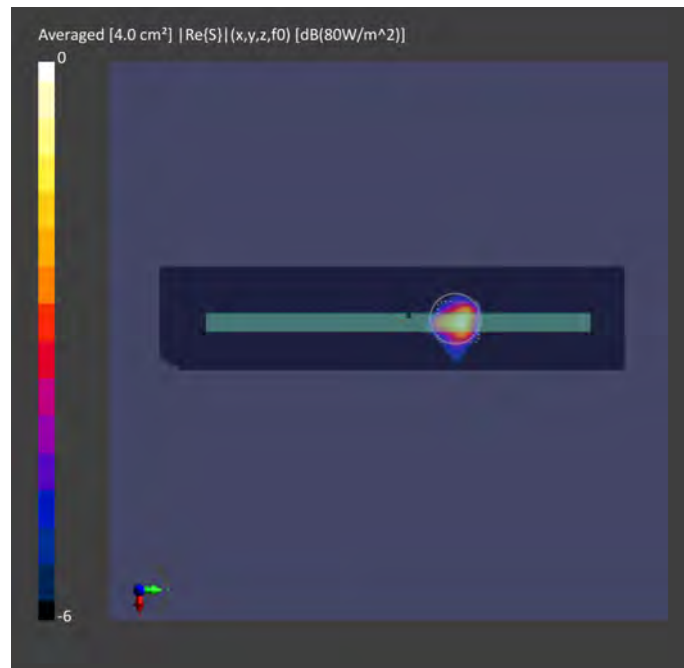
Phantom	Medium	Probe, Calibration Date	DAE, Calibration Date
mmWave- 1035	--Air-	EUmmWV3 - SN9361_F1-78GHz, 2020-09-24	DAE4 Sn1589, 2020-09-15

Scan Setup

	5G Scan
Grid Extents [mm]	2.0 x 8.0
Grid Steps [lambda]	0.25 x 0.25
Sensor Surface [mm]	2.0

Measurement Results

	5G Scan
Date	2021-02-23
Avg. Area [cm ²]	4.00
pStotavg[W/m ²]	4.66
pSnavg [W/m ²]	4.03
E _{peak} [V/m]	80.0



Test Lab: Bureau Veritas ADT SAR/HAC/PD Testing Lab

Power Density Plot No.:

P46 5G NR n261_CW_Right Side_2mm_Ch2077950_Ant 1_Beam ID 166

Device under Test Properties

Name, Manufacturer	Dimensions [mm]	IMEI	DUT Type
WTW-P20120540	172.0 x 77.0 x 8.0		Phone

Exposure Conditions

Phantom Section	Position, Test Distance [mm]	Band	Group, UID	Frequency [MHz], Channel Number	Conversion Factor
5GAir	Right Side 2.00	n261	CW	27927	1.0

Hardware Setup

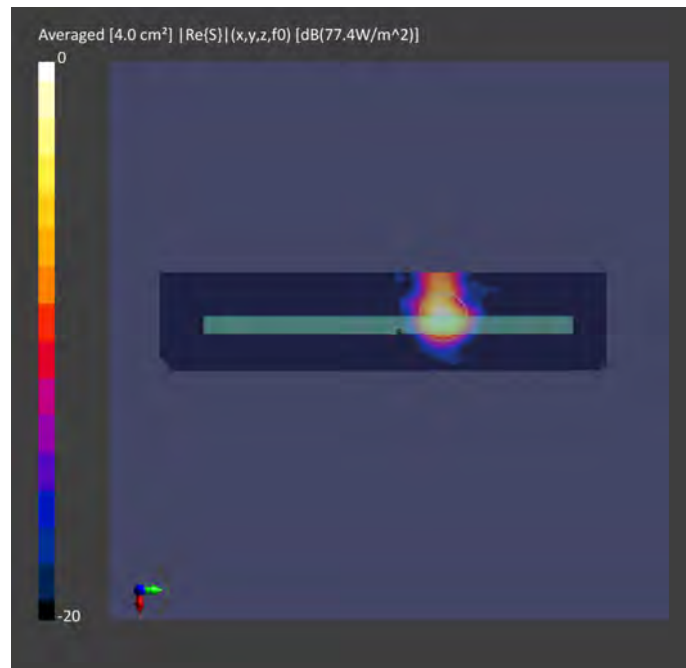
Phantom	Medium	Probe, Calibration Date	DAE, Calibration Date
mmWave	--Air--	EUmmWV3 - SN9361_F1-78GHz, 2020-09-24	DAE4 Sn1589, 2020-09-15

Scan Setup

	5G Scan
Grid Extents [mm]	8.0 x 6.0
Grid Steps [lambda]	0.25 x 0.25
Sensor Surface [mm]	2.0

Measurement Results

	5G Scan
Date	2021-02-23
Avg. Area [cm ²]	4.00
pStotavg [W/m ²]	5.74
pSnavg [W/m ²]	5.08
E _{peak} [V/m]	77.4



Test Lab: Bureau Veritas ADT SAR/HAC/PD Testing Lab

Power Density Plot No.:

P37 5G NR n261_CW_Right Side_2mm_Ch2071821_Ant 1_Beam ID 38 166

Device under Test Properties

Name, Manufacturer	Dimensions [mm]	IMEI	DUT Type
WTW-P20120540	172.0		Phone

Exposure Conditions

Phantom Section	Position, Test Distance [mm]	Band	Group, UID	Frequency [MHz], Channel Number	Conversion Factor
5GAir	Right Side 2.00	n261	CW	27600.0	1.0

Hardware Setup

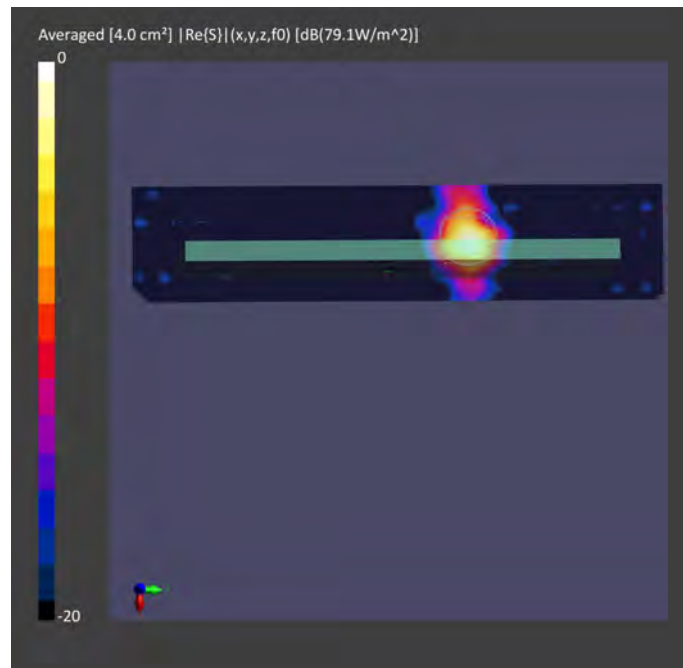
Phantom	Medium	Probe, Calibration Date	DAE, Calibration Date
mmWave	--Air--	EUmmWV3 - SN9361_F1-78GHz, 2020-09-24	DAE4 Sn1589, 2020-09-15

Scan Setup

	5G Scan
Grid Extents [mm]	6.0 x 10.0
Grid Steps [lambda]	0.25 x 0.25
Sensor Surface [mm]	2.0

Measurement Results

	5G Scan
Date	2021-02-23
Avg. Area [cm ²]	4.00
pStotavg[W/m ²]	5.59
pSnavg [W/m ²]	5.08
E _{peak} [V/m]	79.1



Test Lab: Bureau Veritas ADT SAR/HAC/PD Testing Lab

Power Density Plot No.:

P57 5G NR n261_CW_Left Side_2mm_Ch2071821_Ant 2_Beam ID 22

Device under Test Properties

Name, Manufacturer	Dimensions [mm]	IMEI	DUT Type
WTW-P20120540	172.0		Phone

Exposure Conditions

Phantom Section	Position, Test Distance [mm]	Band	Group, UID	Frequency [MHz], Channel Number	Conversion Factor
5GAir	Left Side 2.00	n261	CW0	27500.0	1.0

Hardware Setup

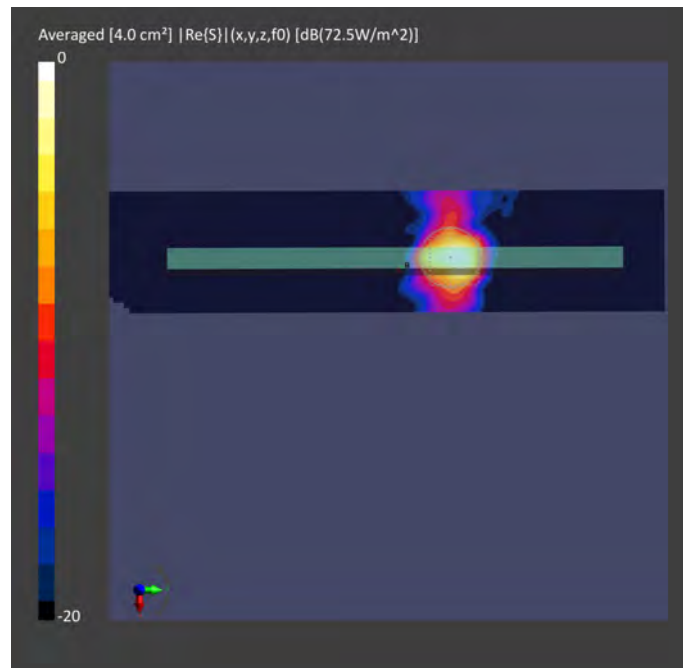
Phantom	Medium	Probe, Calibration Date	DAE, Calibration Date
mmWave	--Air--	EUmmWV4 - SN9454_F1-78GHz, 2020-09-24	DAE4 Sn861, 2020-05-27

Scan Setup

	5G Scan
Grid Extents [mm]	4.0 x 8.0
Grid Steps [lambda]	0.25 x 0.25
Sensor Surface [mm]	2.0

Measurement Results

	5G Scan
Date	2021-02-25
Avg. Area [cm ²]	4.00
pStotavg[W/m ²]	4.83
pSnavg [W/m ²]	4.01
E _{peak} [V/m]	85.0



Test Lab: Bureau Veritas ADT SAR/HAC/PD Testing Lab

Power Density Plot No.:

P58 5G NR n261_CW_Left Side_2mm_Ch2077950_Ant 2_Beam ID 163

Device under Test Properties

Name, Manufacturer	Dimensions [mm]	IMEI	DUT Type
WTW-P20120540	172.0 x 77.0 x 8.0		Phone

Exposure Conditions

Phantom Section	Position, Test Distance [mm]	Band	Group, UID	Frequency [MHz], Channel Number	Conversion Factor
5GAir	Left Side 2.00	n261	CW	27927	1.0

Hardware Setup

Phantom	Medium	Probe, Calibration Date	DAE, Calibration Date
mmWave	--Air--	EUmmWV3 - SN9361_F1-78GHz, 2020-09-24	DAE4 Sn1589, 2020-09-15

Scan Setup

	5G Scan
Grid Extents [mm]	6.0 x 4.0
Grid Steps [lambda]	0.25 x 0.25
Sensor Surface [mm]	2.0

Measurement Results

	5G Scan
Date	2021-02-24
Avg. Area [cm ²]	4.00
pStotavg [W/m ²]	5.96
pSnavg [W/m ²]	5.35
E _{peak} [V/m]	90.9

