

**#01\_WLAN6E\_802.11ax-HE160 MCS0\_Left Cheek\_CH175**

Communication System: 802.11ax; Frequency: 6825.0

Medium: HSL\_6G\_210118 Medium parameters used:  $f=6825.0$  MHz;  $\sigma=6.39$  S/m;  $\epsilon_r=34.0$

Ambient Temperature: 23.5°C; Liquid Temperature: 22.5°C

DASY6 Configuration:

- Probe: EX3DV4 - SN3728; ConvF(4.85, 4.85, 4.85); Calibrated: 2020-02-04
- Sensor-Surface: 1.4 mm
- Electronics: DAE4 Sn1399; Calibrated: 2020-02-18
- Phantom: Twin-SAM V4.0 (30deg probe tilt); Serial:1488; Section: LeftHead
- Measurement Software: cDASY6 V6.6.0.13926
- UID: WLAN, 10743-AAB
- MAIA: Area Scan: N/A; Zoom Scan: N/A

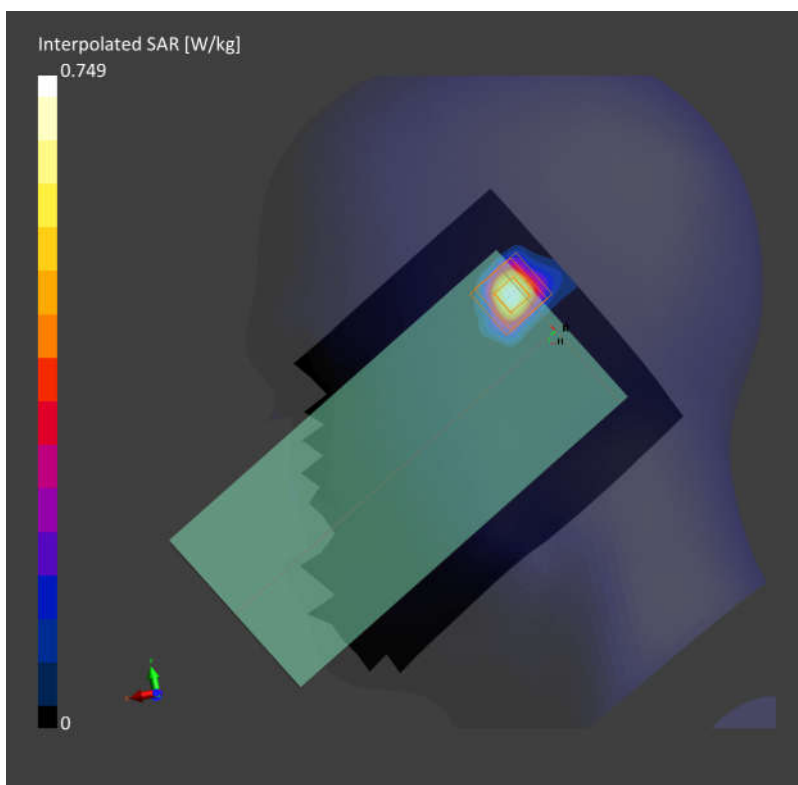
**Area Scan (119.0 mm x 204.0 mm):** Measurement Grid: 8.5 mm x 8.5 mm

SAR (1g) = 0.135 W/kg; SAR (10g) = 0.041 W/kg;

**Zoom Scan (22.0 mm x 22.0 mm x 22.0 mm):** Measurement Grid: 3.4 mm x 3.4 mm x 1.4 mm

Power Drift = -0.06 dB

SAR (1g) = 0.148 W/kg; SAR (10g) = 0.044 W/kg;



**#02\_WLAN6E\_802.11ax-HE160 MCS0\_Back\_15mm\_CH207**

Communication System: 802.11ax; Frequency: 6985.0

Medium: HSL\_6G\_210118 Medium parameters used:  $f=6985.0$  MHz;  $\sigma=6.55$  S/m;  $\epsilon_r=33.7$

Ambient Temperature: 23.5°C; Liquid Temperature: 22.5°C

DASY6 Configuration:

- Probe: EX3DV4 - SN3728; ConvF(4.95, 4.95, 4.95); Calibrated: 2020-02-04
- Sensor-Surface: 1.4 mm
- Electronics: DAE4 Sn1399; Calibrated: 2020-02-18
- Phantom: Twin-SAM V4.0 (30deg probe tilt); Serial:1488; Section: Flat
- Measurement Software: cDASY6 V6.6.0.13926
- UID: WLAN, 10743-AAB
- MAIA: Area Scan: N/A; Zoom Scan: N/A

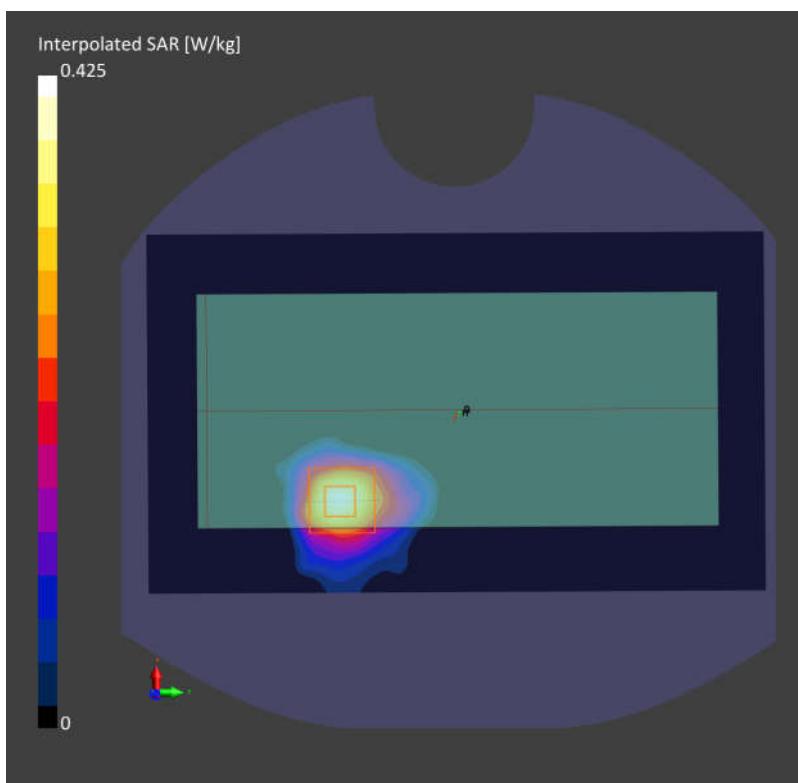
**Area Scan (119.0 mm x 204.0 mm):** Measurement Grid: 8.5 mm x 8.5 mm

SAR (1g) = 0.082 W/kg; SAR (10g) = 0.030 W/kg;

**Zoom Scan (22.0 mm x 22.0 mm x 22.0 mm):** Measurement Grid: 3.4 mm x 3.4 mm x 1.4 mm

Power Drift = 0.12 dB

SAR (1g) = 0.086 W/kg; SAR (10g) = 0.034 W/kg;



### #03\_WLAN6E\_802.11ax-HE160 MCS0\_Back\_15mm\_CH15

Communication System: 802.11ax; Frequency: 6025.0

Medium: HSL\_6G\_210119 Medium parameters used:  $f= 6025.0$  MHz;  $\sigma= 5.43$  S/m;  $\epsilon_r = 34.8$

Ambient Temperature: 23.5°C; Liquid Temperature: 22.5°C

DASY6 Configuration:

- Probe: EX3DV4 - SN3728; ConvF(4.85, 4.85, 4.85); Calibrated: 2020-02-04
- Sensor-Surface: 1.4 mm
- Electronics: DAE4 Sn1399; Calibrated: 2020-02-18
- Phantom: Twin-SAM V4.0 (30deg probe tilt); Serial:1488; Section: Flat
- Measurement Software: cDASY6 V6.6.0.13926
- UID: WLAN, 10743-AAB
- MAIA: Area Scan: N/A; Zoom Scan: N/A

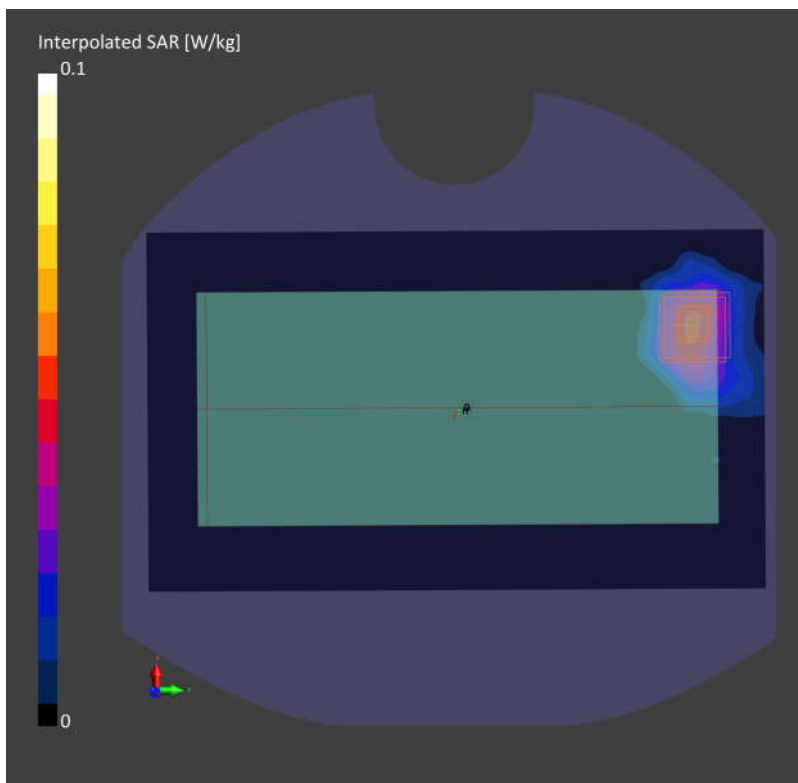
**Area Scan (119.0 mm x 204.0 mm):** Measurement Grid: 8.5 mm x 8.5 mm

SAR (1g) = 0.040 W/kg; SAR (10g) = 0.016 W/kg;

**Zoom Scan (22.0 mm x 22.0 mm x 22.0 mm):** Measurement Grid: 3.4 mm x 3.4 mm x 1.4 mm

Power Drift = 0.16 dB

SAR (1g) = 0.038 W/kg; SAR (10g) = 0.014 W/kg;



### #04\_WLAN6E\_802.11ax-HE160 MCS0\_Front\_0mm\_CH207

Communication System: 802.11ax; Frequency: 6985.0

Medium: HSL\_6G\_210118 Medium parameters used:  $f= 6985.0$  MHz;  $\sigma= 6.57$  S/m;  $\epsilon_r = 33.8$

Ambient Temperature: 23.5°C; Liquid Temperature: 22.5°C

DASY6 Configuration:

- Probe: EX3DV4 - SN3728; ConvF(4.95, 4.95, 4.95); Calibrated: 2020-02-04
- Sensor-Surface: 1.4 mm
- Electronics: DAE4 Sn1399; Calibrated: 2020-02-18
- Phantom: Twin-SAM V4.0 (30deg probe tilt); Serial:1488; Section: Flat
- Measurement Software: cDASY6 V6.6.0.13926
- UID: WLAN, 10743-AAB
- MAIA: Area Scan: N/A; Zoom Scan: N/A

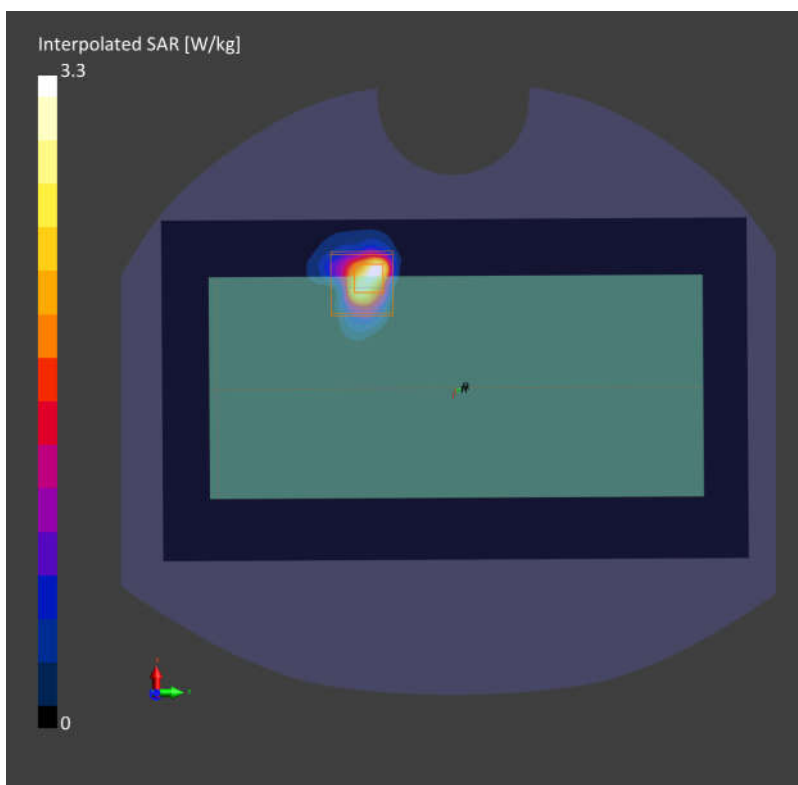
**Area Scan (119.0 mm x 204.0 mm):** Measurement Grid: 8.5 mm x 8.5 mm

SAR (1g) = 0.374 W/kg; SAR (10g) = 0.099 W/kg;

**Zoom Scan (22.0 mm x 22.0 mm x 22.0 mm):** Measurement Grid: 3.1 mm x 3.1 mm x 1.2 mm

Power Drift = -0.16 dB

SAR (1g) = 0.479 W/kg; SAR (10g) = 0.106 W/kg;



## #05\_WLAN6E\_802.11ax-HE160 MCS0\_Back\_0mm\_CH15

Communication System: 802.11ax; Frequency: 6025.0

Medium: HSL\_6G\_210119 Medium parameters used:  $f= 6025.0$  MHz;  $\sigma= 5.43$  S/m;  $\epsilon_r = 34.8$

Ambient Temperature: 23.5°C; Liquid Temperature: 22.5°C

DASY6 Configuration:

- Probe: EX3DV4 - SN3728; ConvF(4.85, 4.85, 4.85); Calibrated: 2020-02-04
- Sensor-Surface: 1.4 mm
- Electronics: DAE4 Sn1399; Calibrated: 2020-02-18
- Phantom: Twin-SAM V4.0 (30deg probe tilt); Serial:1488; Section: Flat
- Measurement Software: cDASY6 V6.6.0.13926
- UID: WLAN, 10743-AAB
- MAIA: Area Scan: N/A; Zoom Scan: N/A

**Area Scan (119.0 mm x 204.0 mm):** Measurement Grid: 8.5 mm x 8.5 mm

SAR (1g) = 0.337 W/kg; SAR (10g) = 0.081 W/kg;

**Zoom Scan (22.0 mm x 22.0 mm x 22.0 mm):** Measurement Grid: 3.4 mm x 3.4 mm x 1.4 mm

Power Drift = 0.04 dB

SAR (1g) = 0.417 W/kg; SAR (10g) = 0.084 W/kg;

