

Test Laboratory: Sporton International Inc.

#### Device Under Test Properties

Manufacturer	Dimensions [mm]	IMEI	DUT Type
	172.1 x 77.5 x 10.4		Phone

#### Exposure Conditions

Phantom Section	Position, Test Distance [mm]	Frequency [MHz]	Conversion Factor
5G	FRONT, 2.00	6825.0	1.0

#### Hardware Setup

Phantom	Medium	Probe, Calibration Date	DAE, Calibration Date
mmWave Phantom - 1044	Air -	EummWV3 - SN9424_F1-78GHz, 2020-03-30	DAE4 Sn1399, 2020-02-18

#### Scans Setup

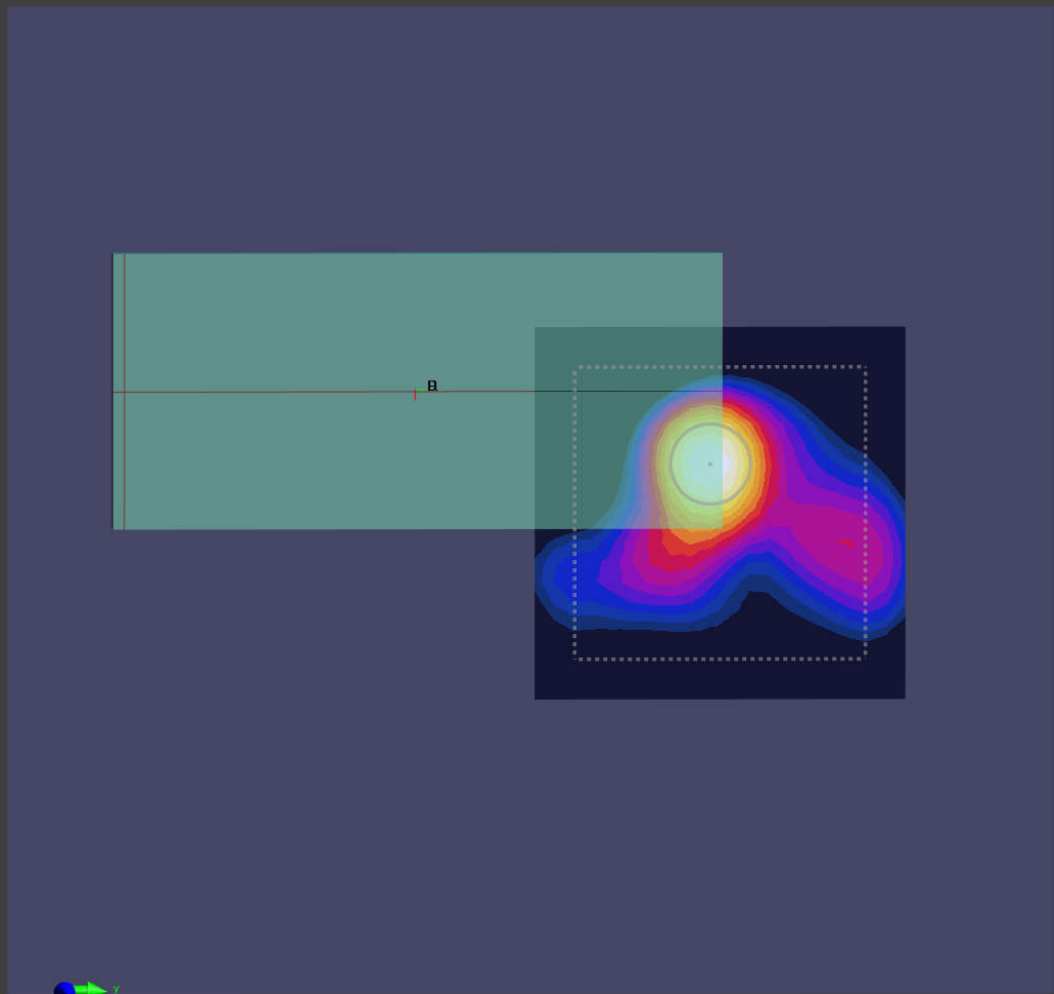
Grid Extents [mm]	100.0 x 100.0
Grid Steps [lambda]	0.0625 x 0.0625
Sensor Surface [mm]	2.0

#### Measurement Results

Date	2021-01-23, 16:15
Avg. Area [cm <sup>2</sup> ]	4.00
S <sub>avg inc</sub> [W/m <sup>2</sup> ]	0.701
S <sub>avg tot</sub> [W/m <sup>2</sup> ]	0.878
S <sub>peak</sub> [W/m <sup>2</sup> ]	2.27
E <sub>peak</sub> [V/m]	36.4
H <sub>peak</sub> [A/m]	0.073
Power Drift [dB]	0.08

Averaged [4.0 cm<sup>2</sup>] |Re{S}|(x,y,z,f0) [dB(0.878W/m<sup>2</sup>)]

0



Test Laboratory: Sporton International Inc.

#### Device Under Test Properties

Manufacturer	Dimensions [mm]	IMEI	DUT Type
	172.1 x 77.5 x 10.4		Phone

#### Exposure Conditions

Phantom Section	Position, Test Distance [mm]	Frequency [MHz]	Conversion Factor
5G	FRONT, 2.00	6985.0	1.0

#### Hardware Setup

Phantom	Medium	Probe, Calibration Date	DAE, Calibration Date
mmWave Phantom - 1044	Air -	EummWV3 - SN9424_F1-78GHz, 2020-03-30	DAE4 Sn1399, 2020-02-18

#### Scans Setup

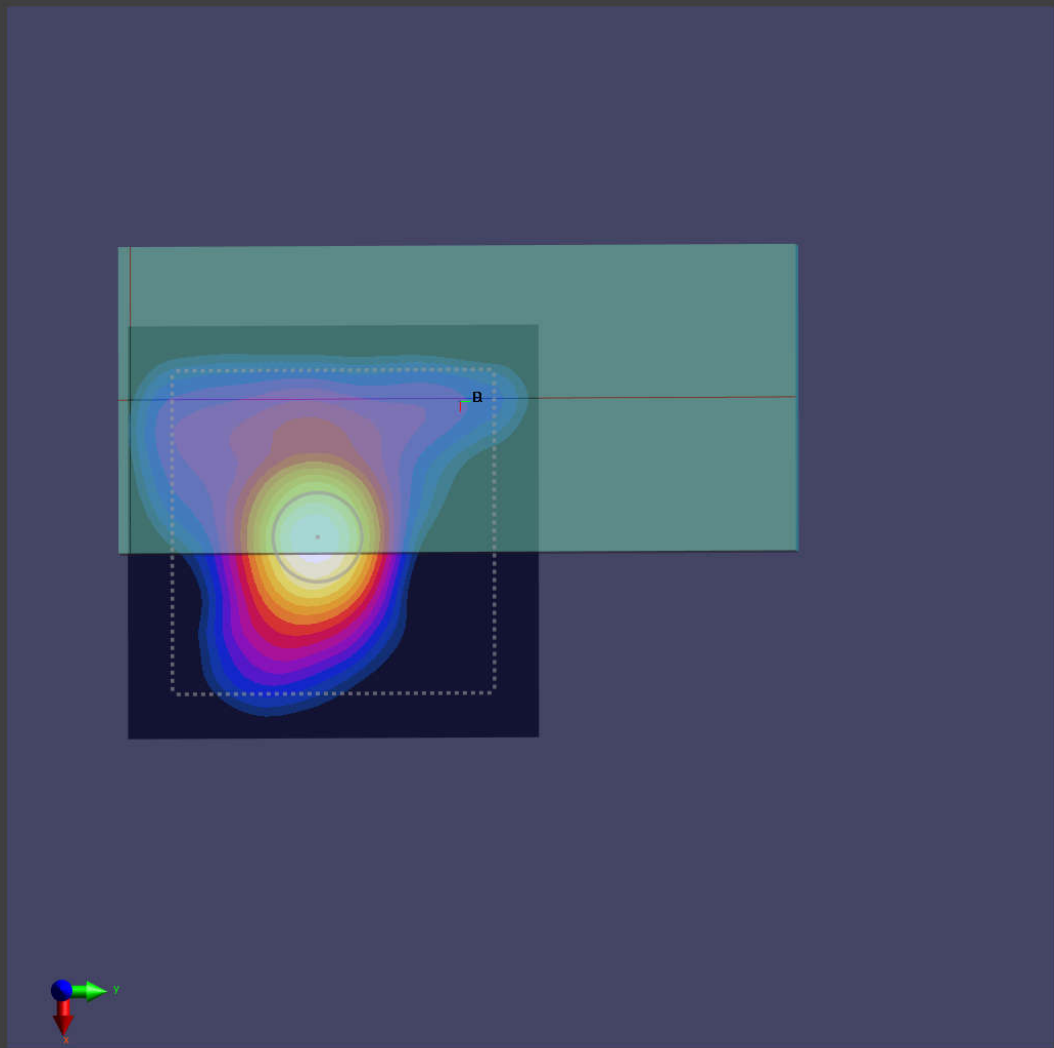
Grid Extents [mm]	100.0 x 100.0
Grid Steps [lambda]	0.0625 x 0.0625
Sensor Surface [mm]	2.0

#### Measurement Results

Date	2021-01-26, 07:26
Avg. Area [cm <sup>2</sup> ]	4.00
S <sub>avg inc</sub> [W/m <sup>2</sup> ]	0.793
S <sub>avg tot</sub> [W/m <sup>2</sup> ]	0.951
S <sub>peak</sub> [W/m <sup>2</sup> ]	2.05
E <sub>peak</sub> [V/m]	38.7
H <sub>peak</sub> [A/m]	0.077
Power Drift [dB]	-0.00

Averaged [4.0 cm<sup>2</sup>] |Re{S}|(x,y,z,f0) [dB(0.951W/m<sup>2</sup>)]

0



-13

Test Laboratory: Sporton International Inc.

#### Device Under Test Properties

Manufacturer	Dimensions [mm]	IMEI	DUT Type
	172.1 x 77.5 x 10.4		Phone

#### Exposure Conditions

Phantom Section	Position, Test Distance [mm]	Frequency [MHz]	Conversion Factor
5G	BACK, 2.00	6025.0	1.0

#### Hardware Setup

Phantom	Medium	Probe, Calibration Date	DAE, Calibration Date
mmWave Phantom - 1044	Air -	EummWV3 - SN9424_F1-78GHz, 2020-03-30	DAE4 Sn1399, 2020-02-18

#### Scans Setup

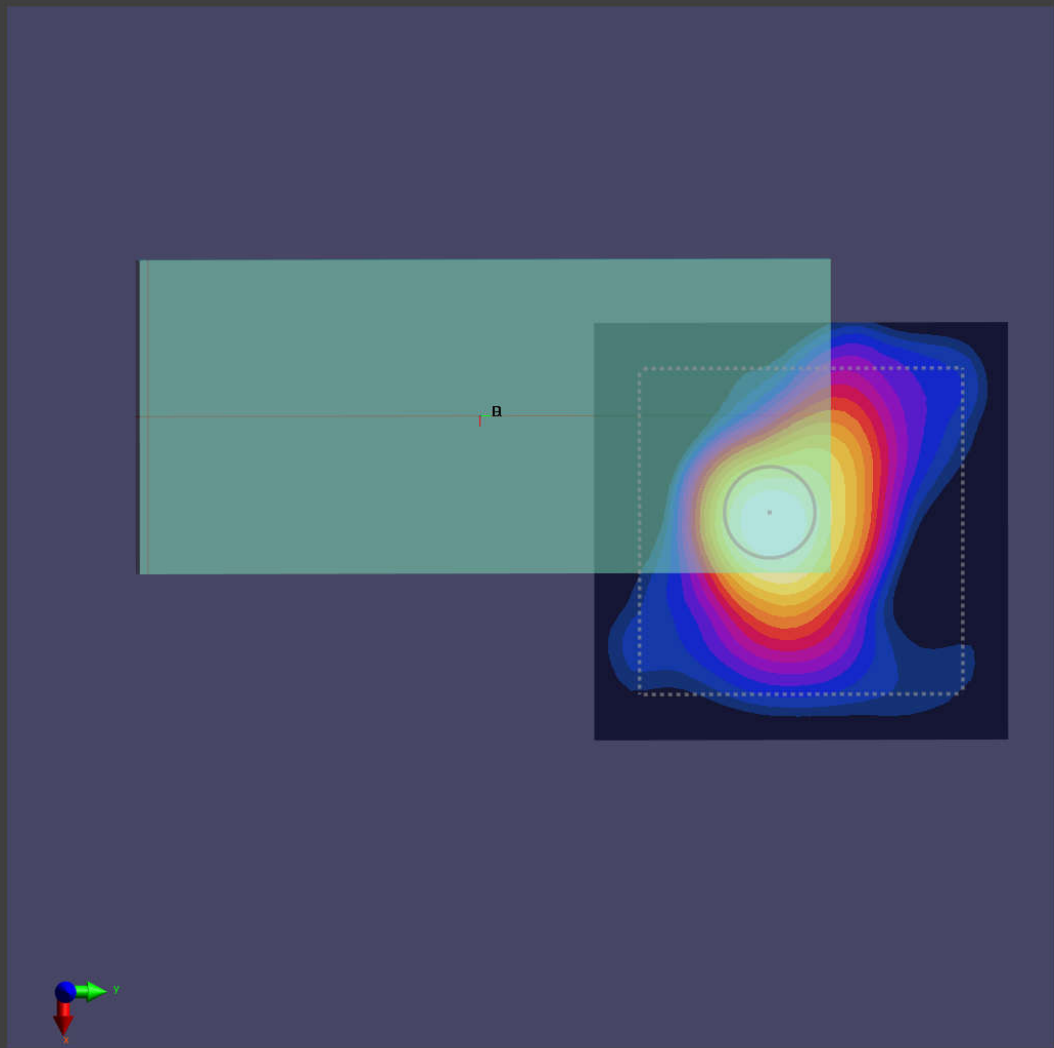
Grid Extents [mm]	100.0 x 100.0
Grid Steps [lambda]	0.0625 x 0.0625
Sensor Surface [mm]	2.0

#### Measurement Results

Date	2021-01-26, 16:52
Avg. Area [cm <sup>2</sup> ]	4.00
S <sub>avg inc</sub> [W/m <sup>2</sup> ]	1.00
S <sub>avg tot</sub> [W/m <sup>2</sup> ]	1.19
S <sub>peak</sub> [W/m <sup>2</sup> ]	2.50
E <sub>peak</sub> [V/m]	37.3
H <sub>peak</sub> [A/m]	0.097
Power Drift [dB]	-0.19

Averaged [4.0 cm<sup>2</sup>] |Re{S}|(x,y,z,f0) [dB(1.19W/m<sup>2</sup>)]

0



-15

