

Test Laboratory: Sporton International Inc.

#### Device Under Test Properties

Manufacturer	Dimensions [mm]	IMEI	DUT Type
	70.0 x 50.0 x 9.0		Verification Source

#### Exposure Conditions

Phantom Section	Position, Test Distance [mm]	Frequency [MHz]	Conversion Factor
5G	FRONT, 10.00	10000.0	1.0

#### Hardware Setup

Phantom	Medium	Probe, Calibration Date	DAE, Calibration Date
mmWave - 1044	Air -	EUmmWV3 - SN9424_F1-78GHz, 2020-03-30	DAE4 Sn1399, 2020-02-18

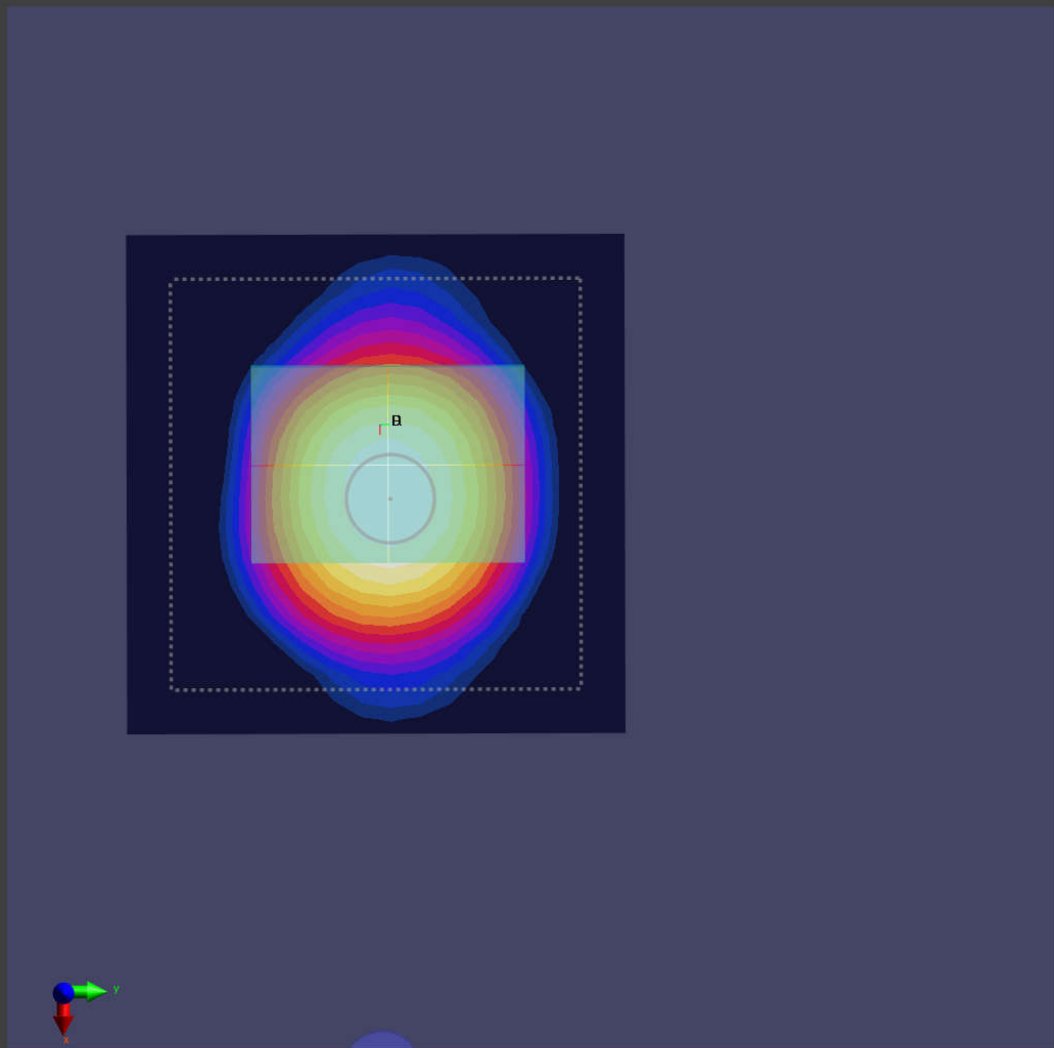
#### Scans Setup

Grid Extents [mm]	120.0 x 120.0
Grid Steps [lambda]	0.25 x 0.25
Sensor Surface [mm]	10.0

#### Measurement Results

Date	2021-01-23, 14:17
Avg. Area [cm <sup>2</sup> ]	4.00
S <sub>avg inc</sub> [W/m <sup>2</sup> ]	28.0
S <sub>avg tot</sub> [W/m <sup>2</sup> ]	28.2
S <sub>peak</sub> [W/m <sup>2</sup> ]	34.1
E <sub>peak</sub> [V/m]	116
H <sub>peak</sub> [A/m]	0.312
Power Drift [dB]	0.07

Averaged [4.0 cm<sup>2</sup>] |Re{S}|(x,y,z,f0) [dB(28.2W/m<sup>2</sup>)]



Test Laboratory: Sporton International Inc.

#### Device Under Test Properties

Manufacturer	Dimensions [mm]	IMEI	DUT Type
	70.0 x 50.0 x 9.0		Verification Source

#### Exposure Conditions

Phantom Section	Position, Test Distance [mm]	Frequency [MHz]	Conversion Factor
5G	FRONT, 10.00	10000.0	1.0

#### Hardware Setup

Phantom	Medium	Probe, Calibration Date	DAE, Calibration Date
mmWave - 1044	Air -	EUmmWV3 - SN9424_F1-78GHz, 2020-03-30	DAE4 Sn1399, 2020-02-18

#### Scans Setup

Grid Extents [mm]	120.0 x 120.0
Grid Steps [lambda]	0.25 x 0.25
Sensor Surface [mm]	10.0

#### Measurement Results

Date	2021-01-26, 04:13
Avg. Area [cm <sup>2</sup> ]	4.00
S <sub>avg inc</sub> [W/m <sup>2</sup> ]	27.5
S <sub>avg tot</sub> [W/m <sup>2</sup> ]	27.6
S <sub>peak</sub> [W/m <sup>2</sup> ]	32.6
E <sub>peak</sub> [V/m]	114
H <sub>peak</sub> [A/m]	0.289
Power Drift [dB]	0.08

Averaged [4.0 cm<sup>2</sup>] |Re{S}|(x,y,z,f0) [dB(27.6W/m<sup>2</sup>)]

