



Introduction

Thank you very much for selecting the Bluetooth Utility.

This Help facility will show you how to use the Bluetooth Utility for configuring Bluetooth devices and how it can be used in other convenient ways.

We hope that the Help facility will enable you to be able to make full use of the Bluetooth Utility.

- [What is Bluetooth?](#)
- [What you need to know about using Bluetooth](#)
- [Varieties of Bluetooth devices you can use](#)
- [Contents of the Bluetooth Utility](#)

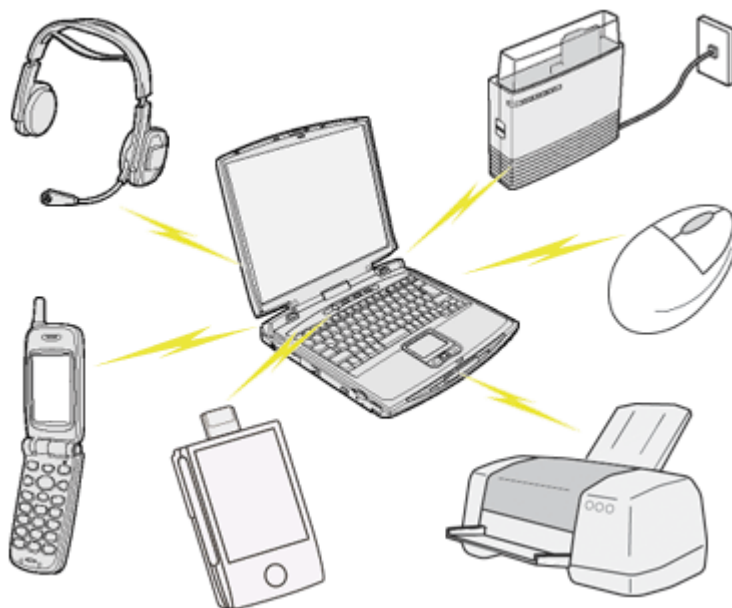
[\[Trademark information\]](#)

(C) 2003, 2004 TOSHIBA Corporation All Rights Reserved

What is Bluetooth?

Bluetooth is a global standard telecommunications method that enables data to be exchanged wirelessly between personal computers, peripheral components, mobile telephones and other electronic devices.

Data can be readily exchanged between Bluetooth devices if they have been registered as components able to communicate with each other.



A maximum of seven Bluetooth devices may be connected together. By using Bluetooth to connect to a mouse, keyboard, modem, printer, or other device, you can do away with messy cabling and not have to be concerned about space restrictions, which will allow you to work more comfortably.

[Next](#) 

[Next](#)

What you need to know about using Bluetooth

Bluetooth exchanges data using radio waves.

The following points are critical in order to configure and use Bluetooth devices correctly.

- The devices must be Bluetooth-compatible
- The Bluetooth devices must be close enough to be able to communicate
- The devices must be in a connectable state
- No other radio wave-emitting devices should be operated nearby
- The Bluetooth devices must be turned on

The devices must be Bluetooth-compatible

The hardware and software used in your PC and other components must be Bluetooth-compatible.

Bluetooth-compatible products normally bear the following logo:



For further details, please refer to your local retailer or consult the product instruction manual.

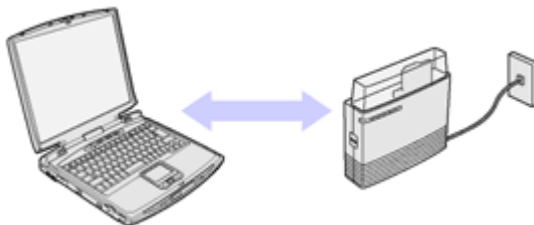
Note

- A Bluetooth communication card, adapter, or other similar device (not included) needs to be installed in PCs or PDAs (personal digital assistants) that do not have Bluetooth built in.

The Bluetooth devices must be close enough to be able to communicate

Bluetooth devices situated in places beyond the reach of the radio waves will not recognize each other, making communication impossible.

In particular, please ensure that your Bluetooth devices can communicate with each other before you register and configure them for the first time.



Note

- PCs have a communication distance restriction of ten meters. Please refer to the instruction manuals for information on the communication distance restrictions specific to each device.
- Communication interference may occur if any obstructions are located between the devices. Devices may not communicate properly if they have been located, for example, on the ground and first floors of a residence, despite their being within the acceptable distance.

NOTE: THE MANUFACTURER IS NOT RESPONSIBLE FOR ANY RADIO OR TV INTERERENCE CAUSED BY UNAUTHORIZED MODIEICATIONS TO THIS EQUIP-MENT.SUCH MODIFICATIONS COULD VOID THE USER AUTHORITY TO OPERATE THE EQUIPMENT.

● The devices must be in a connectable state

The Bluetooth devices must recognize each other in order to be connectable for use. In certain devices, simply turning on the power will not produce a connectable state. Moreover, the energy-saving feature may come into effect after a certain amount of time, which will prevent the devices from being detected. Please refer to the specific product instruction manual for further details.

● No other radio wave-emitting devices should be operated nearby

Microwave ovens, wireless LANs and other radio wave-emitting devices located nearby may affect Bluetooth communication. Please ensure that your devices have been accordingly situated, and that the above devices are not in use when you are operating your Bluetooth device.

● The Bluetooth devices must be turned on

Bluetooth cannot be used if the devices have not been turned on. Some PCs and other components have a Bluetooth communication switch that operates independently of the main power. Bluetooth cannot function if this switch has been turned off.

- [Using PCs with Bluetooth built in](#)
- [When using a Bluetooth USB adapter or SD card](#)

● Varieties of Bluetooth devices you can use

It is important to understand the concepts of "services" and "profiles" in order to determine whether an intended function can be properly utilized when you use a Bluetooth device.

● What is a "profile"?

Examples of Bluetooth devices include mice and keyboards (input devices), printers (output devices) and wireless modems (communication devices). Functions that can be utilized by such devices are called "services."

In order for these services to be used reliably, Bluetooth devices are provided with common specifications known as "profiles."

For example, when a PC makes a connection to a Bluetooth device, it obtains the profile of the corresponding device and thereby ascertains which functions (services) the device offers.

As an example, imagine someone who travels overseas.

The traveller is only able to converse properly with their counterpart if both speak a language (English, Japanese, Chinese, etc.) they both understand.





However, no dialogue will occur if they do not share a common language.



In the above example, the traveller and his/her counterpart correspond to the devices, the languages to the profiles, and the dialogues between the two people to the services. The former example refers to a situation where a service can be performed because the devices support a common profile, whereas the latter example refers to a situation where a service cannot be performed because a common profile is not supported.

In other words, you will be able to use Bluetooth devices that have a profile supported by a PC (the Bluetooth Utility in this case).

If the profiles belonging to the device are not supported by the PC, the functions corresponding to those profiles will not be able to be utilized. Also, a device can only be used if its profiles are supported by the PC.

Types of profiles

The following profiles are supported by the Bluetooth Utility:

Term	Definition
DUN	Dial-Up Networking Enables you to establish a dial-up Bluetooth connection to the Internet or other networks with a wireless modem station, mobile telephone, or similar device.
FAX	FAX Enables you to establish a Bluetooth connection with a wireless modem station, mobile telephone, or similar device to send or receive a fax.
LAP	LAN Access Profile Enables you to establish a Bluetooth connection with a LAN access point to access the services of a LAN using PPP.
SPP	Serial Port Profile Enables communication with a device through a virtual serial port configured for a Bluetooth connection. This can be used for printers and printer adapters with PDAs, using a different method from HCRP or ActiveSync.
HID	Human Interface Device Profile

	Allows connections to wireless mice, keyboards and other input devices.
HCRP	Hardcopy Cable Replacement Profile Enables printing with a printer driver.
FTP	File Transfer Profile Enables you to browse folders on a wireless device and transfer files to and from the local device.
OPP	Object Push Profile Allows business card data to be exchanged with a wireless device.
A2DP	Advanced Audio Distribution Profile Allows audio data to be exchanged between wireless headsets and other audio devices, as well as allowing high-quality music playback.
AVRCP	Audio/Video Remote Control Profile A/V remote control functions such as play and stop. The Bluetooth Utility supports remote control operation.
GAVDP	Generic Audio/Video Distribution Profile Basic profile used to support A2DP, AVRCP and other protocols.
HSP	Head Set Profile Profile used for headsets. Allows you to connect to a PC and communicate as well as connect to a mobile telephone.
PAN	Personal Area Networking Profile Supports IP base network. Allows connection to an ad-hoc or wired network via an access point.
BIP	Basic Imaging Profile Allows image files to be sent and received after having been converted to a size suitable for the destination. In addition to being able to transfer image files, the Bluetooth Utility allows camera shutters to be operated by remote control, as well as other offering other functionalities.

Contents of the Bluetooth Utility

The Bluetooth Utility is a software tool used to configure a variety of settings once a connection has been established between the PC and the Bluetooth device. It also facilitates the exchange of files between Bluetooth devices.

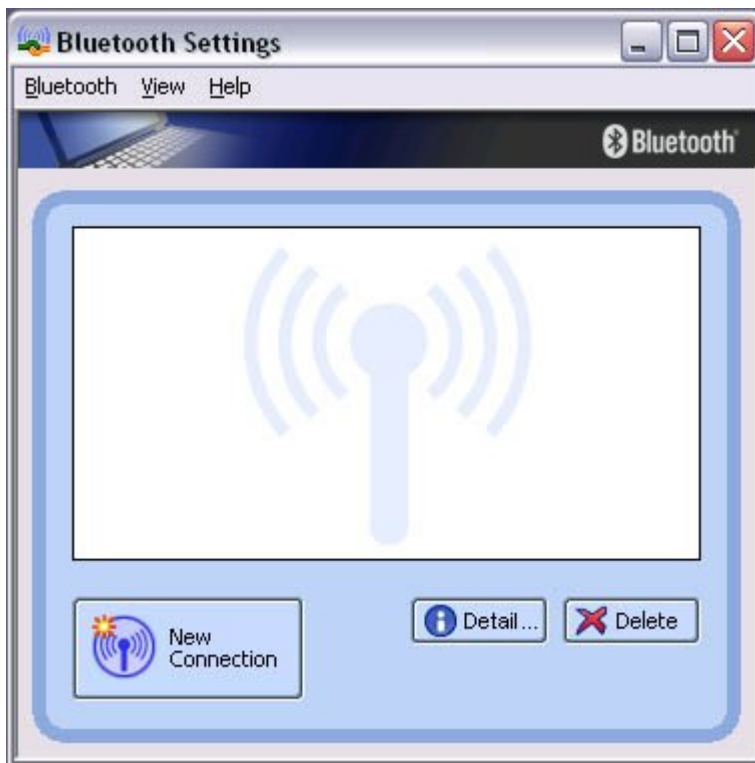
The Bluetooth Utility comprises the following six tools. Descriptions are provided for the functions and the [supported profiles](#) for the respective tools.

- [Bluetooth Settings](#)
- [Bluetooth Manager](#)
- [Bluetooth Information Exchanger](#)
- [Remote Camera](#)
- [Bluetooth Local COM](#)
- [Wireless File Transfer](#)

Bluetooth Settings

This program enables you to easily configure settings when you connect to a Bluetooth device for the first time. The function of a configured and registered device is displayed on the main window as a connection icon.

As a rule, the Bluetooth device will be connected automatically after having been set up; however, a shortcut can be created for a manual connection, if so required.



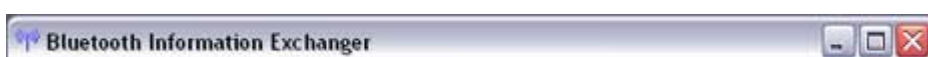
Bluetooth Manager

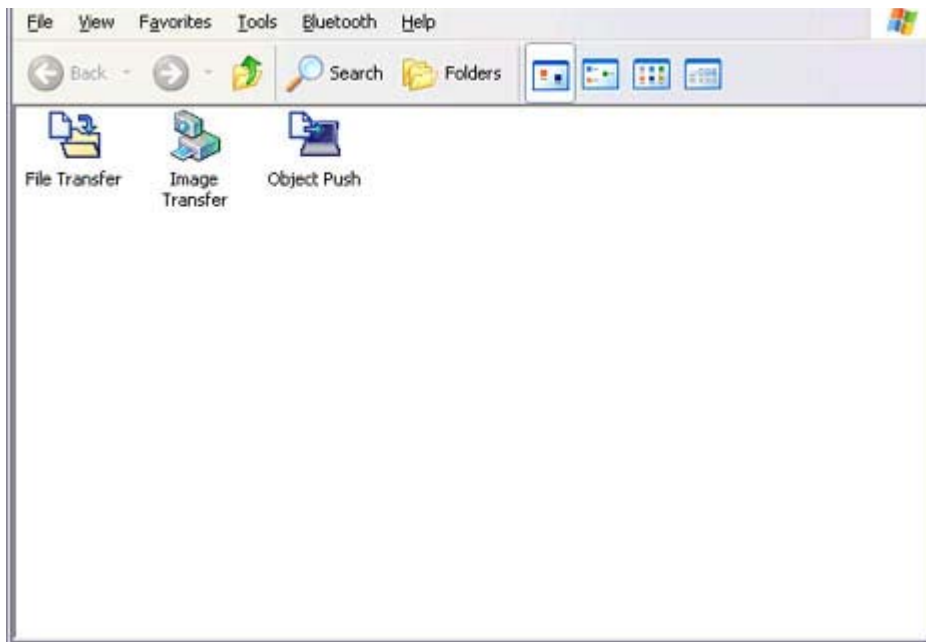
This program, which appears as a Taskbar icon, monitors and controls the power and operating status of Bluetooth devices. It can be used to start the Bluetooth Setup Utility, add a new connection, disconnect from a remote device, and perform other tasks.



Bluetooth Information Exchanger

This program enables you to easily transfer files and images to or exchange business card data with a wireless device by selecting the icon of the counterpart device, or using the right-click menu in Explorer. The wireless devices to which you are connecting must also support the same service functions ([FTP](#) and [OPP](#)).





Related topics

["Exchanging files with PCs and PDAs"](#)

["Sending images to mobile telephones"](#)

["Sending images to PCs or PDAs"](#)

["Exchanging business card data with PCs and PDAs"](#)

Remote Camera

Connecting to a Bluetooth-compatible digital camera allows the device to be operated from the PC side, and captured images to be sent to the PC.



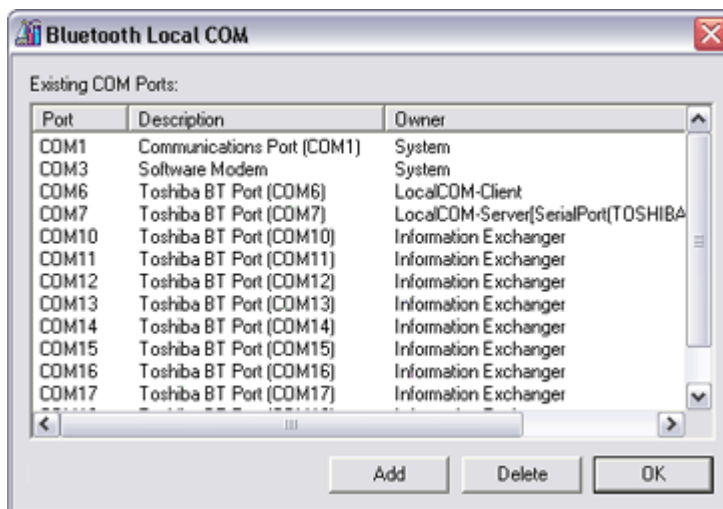
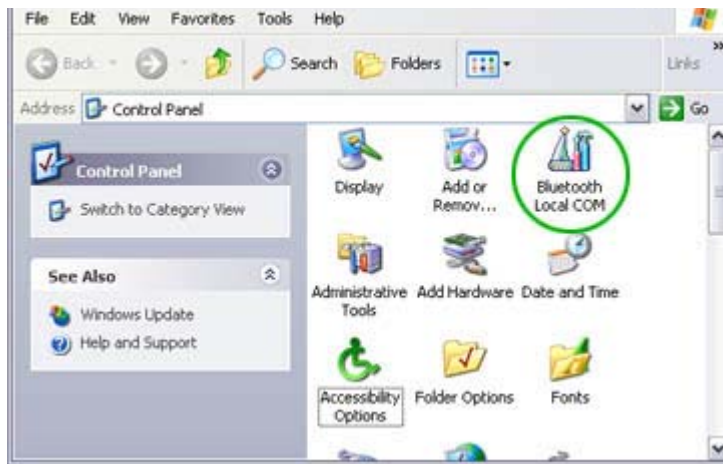
Related topics

["Using a Bluetooth-compatible camera"](#)

Bluetooth Local COM

This program, which is registered in the Control Panel, can create a virtual COM port for use with the Bluetooth Utility. If you need to create a client COM port with the Bluetooth Setup Utility, it can be created automatically without having to start the program.



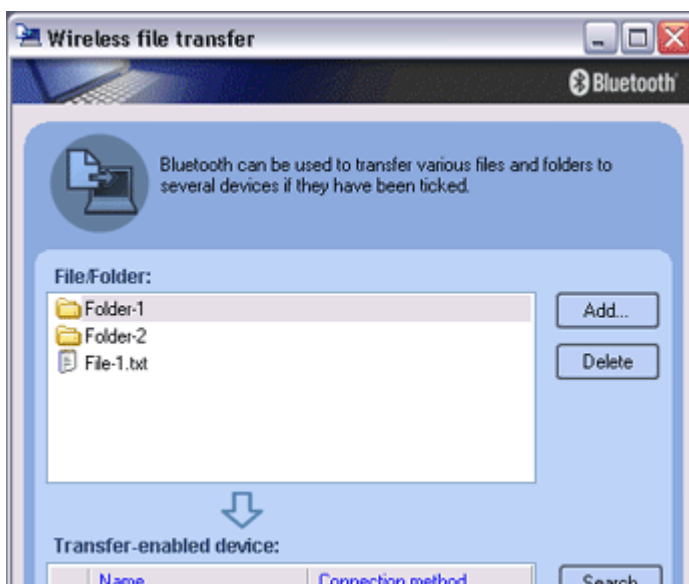


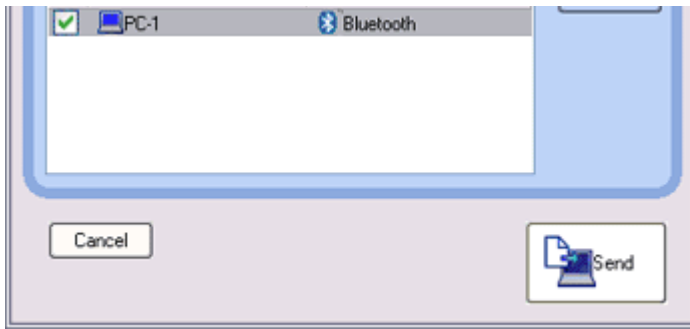
Related topics

["Manually creating a virtual Bluetooth COM port"](#)

Wireless File Transfer

You can send a file wirelessly to another device by right-clicking on the intended file and using the "Sending to Bluetooth Device" menu that appears.



**Related topics**

["Exchanging files with PCs and PDAs"](#)

Using the Bluetooth Utility

Actual examples of how to establish a connection to a Bluetooth device using the Bluetooth Utility are described in this section.

Descriptions of more convenient methods and detailed information on the Bluetooth Utility functions are also provided.

- [Flow of operation](#)
- [Basic settings](#)
- Making the most of your Bluetooth device
- Using the features more effectively
- Bluetooth Utility functions in detail

 **Note**

- The Bluetooth Utility operates under Windows XP and Windows 2000. The descriptions in the examples mainly pertain to operation under Windows XP.

Windows XP: Microsoft® Windows® XP Operating System
Windows 2000: Microsoft® Windows® 2000 Operating System

[Next](#) ▶

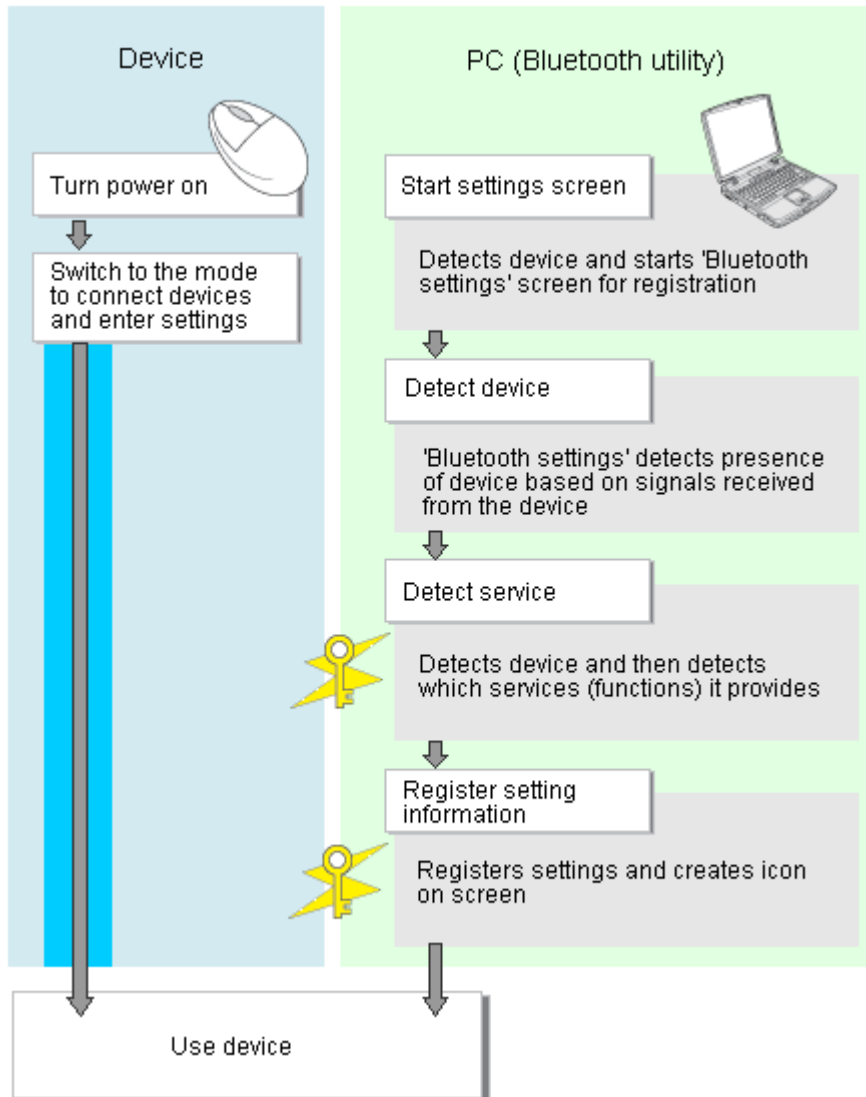
 **Flow of operation**

Flow of operation

The procedure below is used to set up Bluetooth devices using the Bluetooth Utility.

Note

- It is assumed that the set-up is performed from the [Bluetooth Settings] window.



: Enter Bluetooth passkey (PIN code), if required by the device.



: During these stages of the set-up process, the Bluetooth device must be set to Connectability mode.

* Simply turning the power on will activate Connectability mode in certain devices. Please refer to the device instruction manual for further details.

Next

Basic settings

Methods for registering new devices using the Bluetooth Utility shall now be described. A Bluetooth mouse shall be connected and set up using [Bluetooth Settings] as an example.

[Bluetooth Settings] provides two set-up methods: "Express Mode" and "Custom Mode."

- **Express Mode**

[Bluetooth Settings] will automatically detect and register services. If several services (profiles) are supported by the device, the service that has been set to the highest priority shall be selected and registered.

Express Mode is normally recommended for device set-up.

- **Custom Mode**

After having been detected, the services supported by the device are displayed as a list, from which you can select the desired function(s).

Custom Mode must be used to set up a device if, for example, you wish to use a modem station to send a fax (because in Express Mode, the DUN profile will be automatically selected since it has a higher priority than the FAX profile).

The differences between setting up the same device (a Bluetooth mouse) using Express Mode and Custom Mode are described on the following pages.

- [Express Mode Set-up](#)
- [Custom Mode Set-up](#)

Express Mode Set-up

The procedure for setting up the device using Express Mode shall now be described.

Starting Bluetooth Settings



Procedure

1. Click [Start] [All Programs] [Bluetooth] [Bluetooth Settings].
(Under Windows 2000, click [Start] [Programs] [Bluetooth] [Bluetooth Settings].)

Note

- The same result can be achieved by right-clicking on the Bluetooth icon in the task tray and selecting [Bluetooth Settings] from the menu that appears.



The [Bluetooth Settings] window below will appear when other devices have already been registered.



Please click the [New Connection] button to open the [Add New Connection Wizard] window. If no devices have been registered yet, please proceed directly to "Detecting Bluetooth Devices."

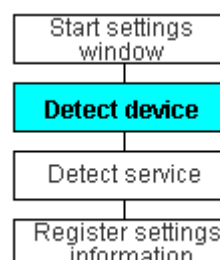
(continued in "Detecting Bluetooth Devices"...)

Next 

Detecting Bluetooth devices

Procedure

(...continued from previous step)



The [Add New Connection Wizard (Welcome to the Add New Connection Wizard)] window will appear.

1. **Switch the mouse power ON to make it connectable via Bluetooth.**
Please refer to the mouse instruction manual for details on this procedure.
2. **Confirm that [Express Mode] has been selected in the [Add New Connection Wizard (Welcome to the Add New Connection Wizard)] window, and click on the [Next] button.**



Searching for Bluetooth devices will start.



When the mouse has been detected, the name and address of the device will appear in the [Add New Connection Wizard (Select Device)] window.





Note

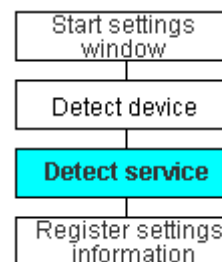
- If no device is found, please confirm that the device has been made connectable via Bluetooth, and click on the [Update] button. A further device search will be performed.

(continued in [Detecting Services]...)

Next ▶

Detecting services

Procedure



(...continued from previous step)

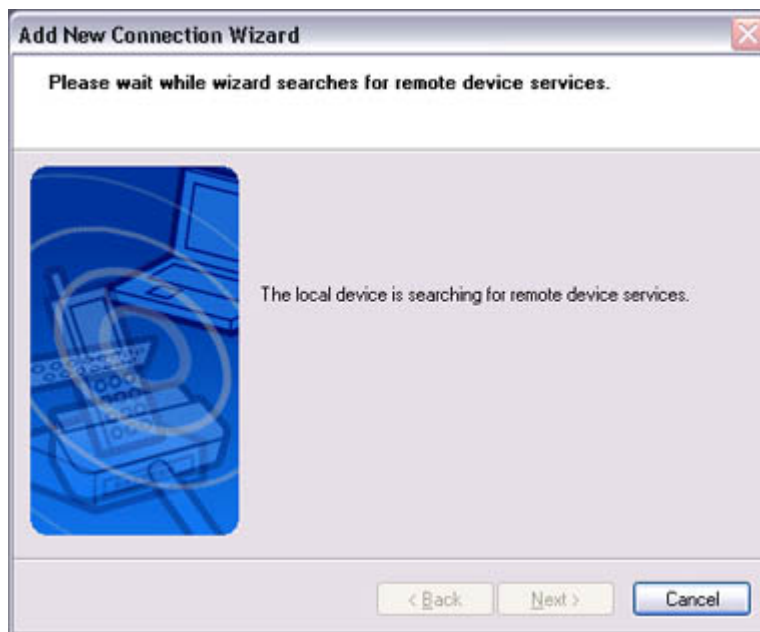
When the mouse has been detected, the name and address of the device will appear in the [Add New Connection Wizard (Select Device)] window.

1. Select the mouse device name from [Device List] and click on the [Next] button.





Bluetooth device detection will commence.



Note

- If several services (profiles) are supported by the device, the service that has been set to the highest priority shall be automatically selected and set up in Express Mode.
Please use Custom Mode if you wish to select desired services manually.
- When a service has been detected, a window prompting you to enter the Bluetooth passkey (PIN code) may appear. Please enter the passkey and click on the [OK] button.
Please refer to your device instruction manual for information on which passkey to use.

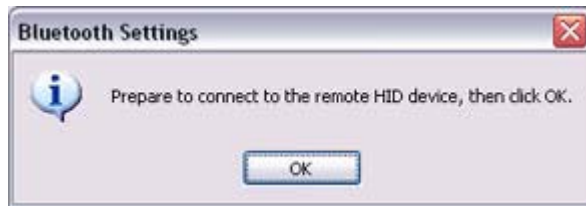


- If you have not entered your Bluetooth passkey after a certain amount of time has

passed, the connection process will be cancelled for security reasons. Please perform the passkey entry process again.

A message will appear prompting you to prepare the device for connection.

2. Click on the [OK] button



Note

- When the settings information has been registered, a window prompting you to enter your Bluetooth passkey (PIN code) may appear. Please enter your passkey and click on the [OK] button. Please refer to your device instruction manual for information on which passkey to use.



- If you have not entered your Bluetooth passkey after a certain amount of time has passed, the connection process will be cancelled for security reasons. Please perform the passkey entry process again.

The [Add New Connection Wizard (Connection Name Setup)] window will appear if a service has been properly detected.

3. Select the type and name of the icon to be displayed once the device has been registered, and click on the [Next] button.





Note

- If you wish to change the icon, please click on the [Change Icon] button and select your preferred icon from the list that appears.

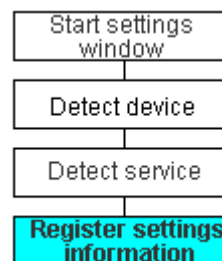


(continued in [Registering Settings Information]...)

Next



Registering settings information



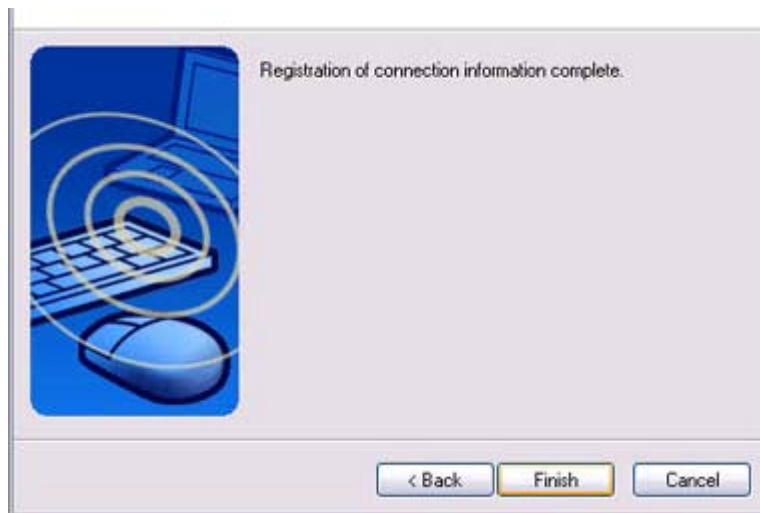
Procedure

(...continued from previous step)

The [Add New Connection Wizard (Completing the Add New Connection Wizard)] window will appear.

1. Click on the [Finish] button





The [Bluetooth Settings] window will appear.
The icons of the registered devices will appear, and the devices will be ready to use.



Note

- The connection icons and icon names can be changed.
 - ➔ [Changing a connection icon name](#)
 - ➔ [Changing a connection icon](#)

Custom Mode Set up

Custom Mode Set-up

The procedure for setting up the device using Custom Mode shall now be described.

Starting Bluetooth Settings



Procedure

1. Click [Start] [All Programs] [Bluetooth] [Bluetooth Settings].
(Under Windows 2000, click [Start] [Programs] [Bluetooth] [Bluetooth Settings].)

Note

- The same result can be achieved by right-clicking on the Bluetooth icon in the task tray and selecting [Bluetooth Settings] from the menu that appears.




The [Bluetooth Settings] window below will appear when other devices have already been registered.



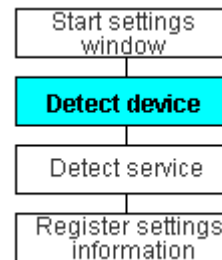
Please click the [New Connection] button to open the [Add New Connection Wizard] window. If no devices have been registered yet, please proceed directly to "Detecting"

window. If no devices have been registered yet, please proceed directly to "Detecting Bluetooth Devices".

(continued in "Detecting Bluetooth Devices"...) Next 

Detecting Bluetooth devices

Procedure



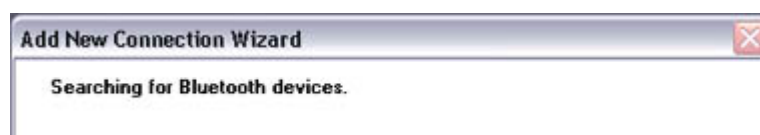
(...continued from previous step)

The [Add New Connection Wizard (Welcome to the Add New Connection Wizard)] window will appear.

1. **Switch the mouse power ON to make it connectable via Bluetooth.**
Please refer to the mouse instruction manual for details on this procedure.
2. **Confirm that [Custom Mode] has been selected in the [Add New Connection Wizard (Welcome to the Add New Connection Wizard)] window, and click on the [Next] button.**



Searching for Bluetooth devices will start.





When the mouse has been detected, the name and address of the device will appear in the [Add New Connection Wizard (Select Device)] window.



 **Note**

- If no device is found, please confirm that the device has been made connectable via Bluetooth, and click on the [Update] button. A further device search will be performed.

(continued in [Detecting Services]...)

Next 

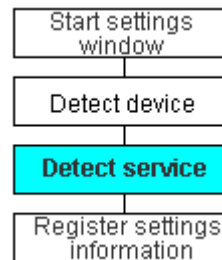
● Detecting services

Procedure

(...continued from previous step)

When the mouse has been detected, the name and address of the device will appear in the [Add New Connection Wizard (Select Device)] window.

1. Select the mouse device name from [Device List] and click on the [Next] button



Bluetooth device detection will commence.





Note

- When a service has been detected, a window prompting you to enter the Bluetooth passkey (PIN code) may appear. Please enter the passkey and click on the [OK] button.
Please refer to your device instruction manual for information on which passkey to use.



- If you have not entered your Bluetooth passkey after a certain amount of time has passed, the connection process will be cancelled for security reasons. Please perform the passkey entry process again.
- If you try to register a device that has already been registered, the following message will appear, and you will not be able to proceed with further operation. Please click on the [OK] button to close the message.



The services supported by the device will be displayed.

2. Select the desired service and click on the [Next] button

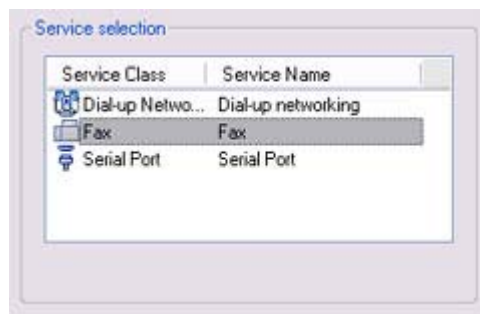




Note

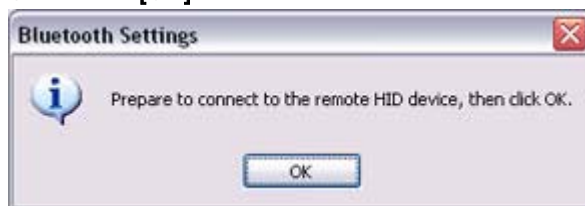
- **When a device supports several services**
If the device supports several services, you can use Custom Mode to manually select the services (profiles) you wish to use from the list that appears under [Select Services].

Example: List of wireless modem station services



If Express Mode is used to perform the set-up, the highest-priority service in the device will be automatically selected and configured.

3. Click on the [OK] button.



Note

- When the settings information has been registered, a window prompting you to enter the Bluetooth passkey (PIN code) may appear. Please enter the passkey and click on the [OK] button.
Please refer to your device instruction manual for information on which passkey to use.



- If you have not entered your Bluetooth passkey after a certain amount of time has passed, the connection process will be cancelled for security reasons. Please perform the passkey entry process again.

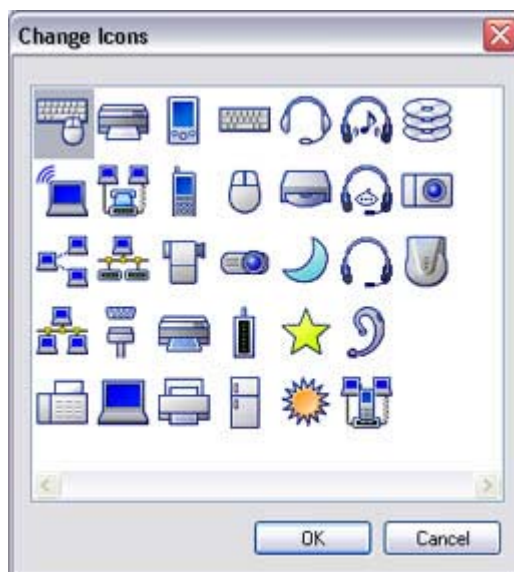
The [Add New Connection Wizard (Connection Name Setup)] window will appear if a service has been properly detected.

4. Select the type and name of the icon to be displayed once the device has been registered, and click on the [Next] button.



 **Note**

- If you wish to change the icon, please click on the [Change Icon] button and select your preferred icon from the list that appears.

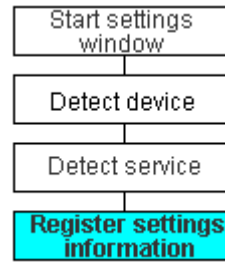


(continued in [Registering Settings Information]...)

Next 

● Registering settings information

Procedure



(...continued from previous step)

The [Add New Connection Wizard (Completing the Add New Connection Wizard)] window will appear.

1. Click on the [Finish] button



The [Bluetooth Settings] window will appear.

The icons of the registered devices will appear, and the devices will be ready to use.



 **Note**

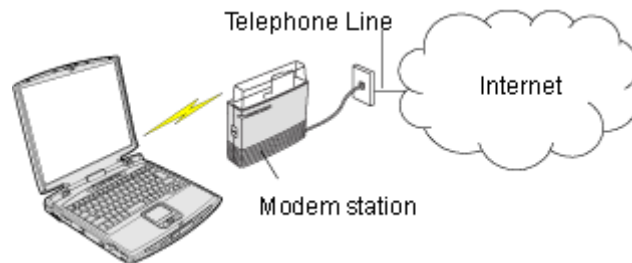
- The connection icons and icon names can be changed.

➔ [Changing a connection icon name](#)

➔ [Changing a connection icon](#)

Connecting to the Internet using a modem station [DUN]

You can use a Bluetooth wireless modem to connect to the Internet via a telephone line.



[Setting up the modem station](#)
[Connecting to the Internet](#)

Important

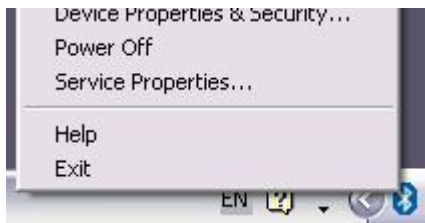
- In order to connect to the Internet, you must have already signed up with a provider and obtained a connection ID and password. Please ensure you have confirmed the ID, password and telephone number of your provider's access point before you begin the set-up process.
- Please refer to your instruction manual for information on connecting the modem station to a telephone line.
- A Bluetooth passkey (PIN code) is required for you to connect to the modem station. Please make a note of your Bluetooth passkey before you start the set-up process.

Setting up the modem station

Procedure

1. Turn on the wireless modem station
2. Right-click the Bluetooth icon in the task tray, and then click on [Add New Connection]





 **Note**

- Alternatively, click [Start] [All Programs] [Bluetooth] [Bluetooth Settings], and then click on [New Connection] from the active [Bluetooth Settings] window.

The [Add New Connection Wizard (Welcome to the Add New Connection Wizard)] window will appear.

3. Confirm that [Express Mode] has been selected, and then click on the [Next] button



The [Add New Connection Wizard (Searching for Bluetooth devices)] window will appear.



4. Select the device name of the wireless modem station from [Device List], and then click on the [Next] button

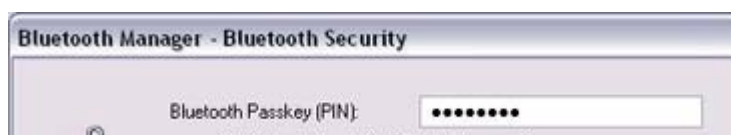


The [Add New Connection Wizard (Searching for Services)] window will appear.



Once a service has been detected successfully, connection to the device and COM port creation will be performed automatically, after which the [Add New Connection Wizard (Modem Settings)] window will appear.

5. If you are connecting to a wireless modem station for the first time, enter the passkey for the modem station under [Bluetooth Passkey (PIN code)], and then click on the [OK] button





Once the program has finished searching for the devices, the [Add New Connection Wizard (Device Selection)] window will appear.

6. Click on the [Next] button



Certain modems require you to configure initialization commands separately. Please click on the [Additional initialization Command Settings] button, enter the initialization commands in the following window, and then click on the [OK] button.



 **Note**

- Please refer to the modem or mobile phone instruction manual for further details on the initialization commands.

7. Enter the connection name (optional), telephone number (of your provider's access point), user name and password (as issued by your provider), and then click on the [Finish] button.



Important

- The sample entries shown in the window are provided solely for purpose of explanation. Please use your own telephone number, ID and password according to the arrangement with your provider.

The settings will be registered, and an icon will appear in the [Bluetooth Settings] window.



London A

Connecting to the Internet

You can connect to the Internet by following the procedure below if the connection destination registered when you configured the wireless modem has been set as the [default connection destination](#).

1. Start your browser, e-mail application or other application

Important

- Please enter the e-mail settings separately if you are going to use e-mail (the set-up method will vary with the application).
2. Enter the URL of the Web page you wish to display and then press the [Enter] key, or use the e-mail tool to send/receive items or perform other activities.

The [Dial-up Connection] window will appear.

3. Click on the [Connect] button




★ Important

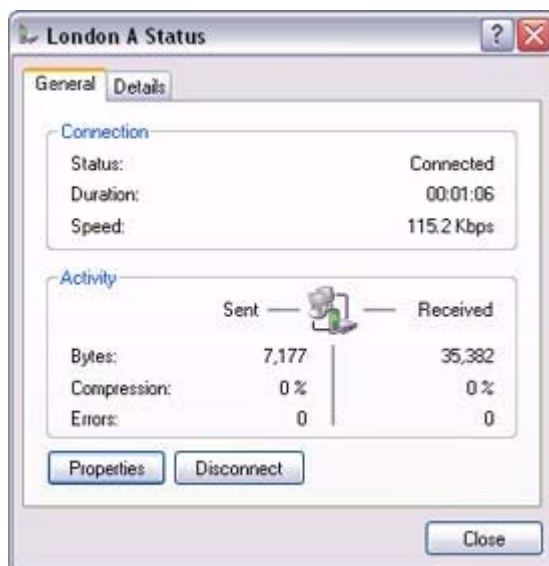
- A connection will be automatically established with the modem station if [COM Auto Connect](#) is available. If COM Auto Connect is not available, please [manually](#) connect to the modem station.

The following message will appear once you have connected to the Internet.



4. End the connection

The window below will appear if you double-click on the  icon in the task bar.



Please click on the [Disconnect] button when you want to disconnect from the Internet.

Alternatively, please right-click on the , and then click on [Disconnect].





Note

- You can start an application to make an automatic connection to the Internet, but you can also make a manual connection using the connection destination icon. The procedure is described below.
1. From the [Bluetooth Settings] window, right-click on the connection destination icon, and then click on [Connect] from the menu that appears



A window indicating that the connection is being established will appear.



If the connection has been established successfully, the connection icon and task tray will appear as shown below.





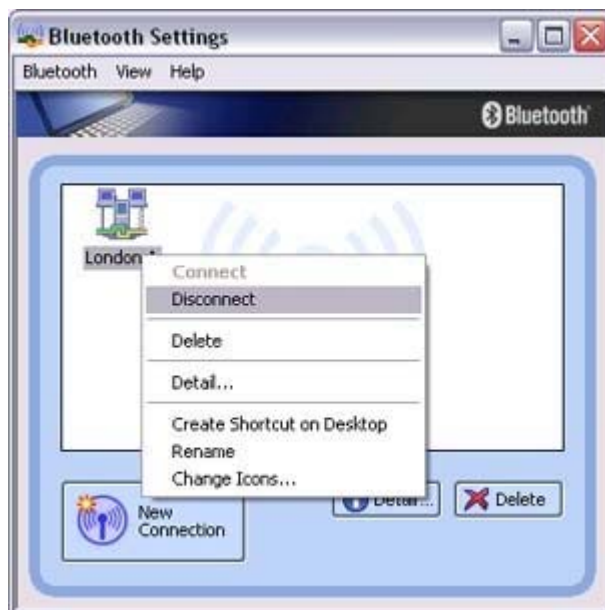
You will be able to browse Web pages using your browser and send and receive e-mail.

★ Important

- Please enter the e-mail settings separately if you are going to use e-mail (the set-up method will vary with the application).

2. End the connection

Right-click on the icon, and then click [Disconnect] to end the connection.



The following message will appear. Click on the [Yes] button.



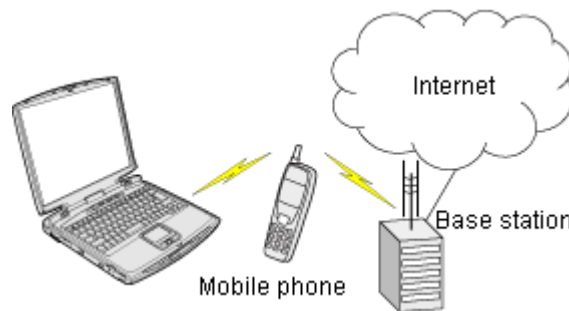
When the icon appears as shown below, the connection will have ended.



☀ Connecting to the Internet using a mobile telephone

Connecting to the Internet using a mobile telephone

This section describes how to connect to the Internet via a telephone line, using a mobile telephone.



[Configuring a mobile telephone for use as a modem](#)
[Connecting to the Internet](#)

Important

- In order to connect to the Internet, you must have already signed up with a provider and obtained a connection ID and password. Please ensure you have confirmed the ID, password and telephone number of your provider's access point before you begin the set-up process.
- A Bluetooth passkey (PIN code) is required for you to connect to the mobile telephone. Please make a note of your Bluetooth passkey before you start the set-up process.

Configuring a mobile telephone for use as a modem

Procedure

1. Turn on the mobile telephone, and set it to be connectable via Bluetooth

Note

- Please refer to the mobile telephone instruction manual for information on how to operate the device.

2. Right-click on the Bluetooth icon in the task tray, and then click on [Add New Connection]



 **Note**

- Alternatively, click [Start] [All Programs] [Bluetooth] [Bluetooth Settings], and then click on [New Connection] from the active [Bluetooth Settings] window.

The [Add New Connection Wizard (Welcome to the Add New Connection Wizard)] window will appear.

3. Confirm that [Express Mode] has been selected, and then click on the [Next] button



The [Add New Connection Wizard (Searching for Bluetooth devices)] window will appear.



4. Select the device name of the mobile telephone from [Device List], and then click on the [Next] button



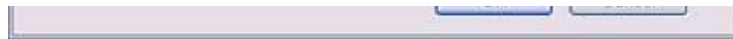
The [Add New Connection Wizard (Searching for Services)] window will appear.



Once a service has been detected successfully, connection to the device and COM port creation will be performed automatically, after which the [Add New Connection Wizard (Modem Settings)] window will appear.

5. If you are connecting to a mobile telephone for the first time, enter the passkey for the wireless modem station under [Bluetooth Passkey (PIN code)], and then click on the [OK] button





Once the program has finished searching for the devices, the [Add New Connection Wizard (Device Selection)] window will appear.

6. Click on the [Next] button



Certain modems require you to configure initialization commands separately. Please click on the [Additional Initialization Command Settings] button, enter the initialization commands in the following window, and then click on the [OK] button.



 **Note**

- Please refer to the modem or mobile phone instruction manual for further details on the initialization commands.

7. Enter the connection name (optional), telephone number (of your provider's access point), user name and password (as issued by your provider), and then click on the [Finish] button.





★ Important

- The sample entries shown in the window are provided solely for purpose of explanation. Please use your own telephone number, ID and password according to the arrangement with your provider.

The settings will be registered, and an icon will appear in the [Bluetooth Settings] window.



● Connecting to the Internet

You can connect to the Internet by following the procedure below if the connection destination registered when you configured the mobile telephone has been set as the [default connection destination](#).

1. Start your browser, e-mail application or other application

★ Important

- Please enter the e-mail settings separately if you are going to use e-mail (the set-up method will vary with the application).
2. Enter the URL of the Web page you wish to display and then press the [Enter] key, or use the e-mail tool to send/receive items or perform other activities.

The [Dial-up Connection] window will appear.

3. Click on the [Connect] button






★ Important

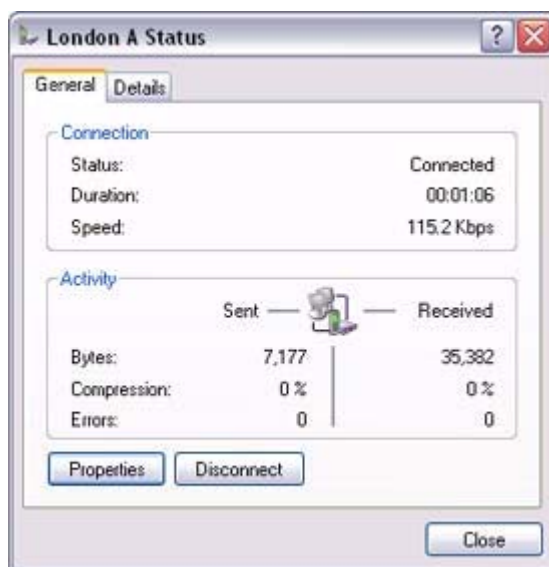
- A connection will be automatically established with the mobile telephone if **COM Auto Connect** is available. If COM Auto Connect is not available, please **manually** connect to the mobile telephone.

The following message will appear once you have connected to the Internet.



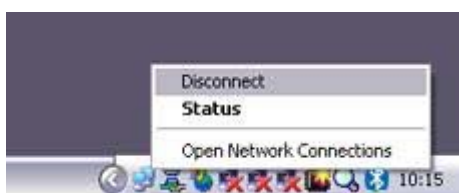
4. End the connection

The window below will appear if you double-click on the  icon in the task bar.



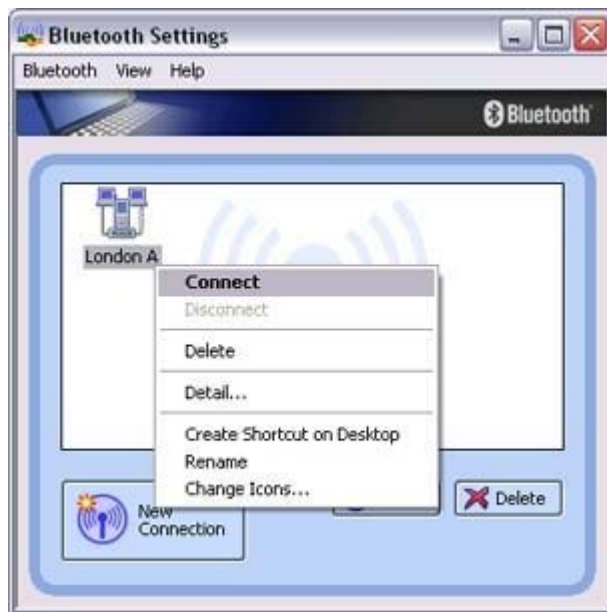
Please click on the [Disconnect] button when you want to disconnect from the Internet.

Alternatively, please right-click on the  icon, and then click on [Disconnect].



 **Note**

- You can start an application to make an automatic connection to the Internet, but you can also make a manual connection using the connection destination icon. The procedure is described below.
1. From the [Bluetooth Settings] window, right-click on the connection destination icon, and then click on [Connect] from the menu that appears



A window indicating that the connection is being established will appear.



If the connection has been established successfully, the connection icon and task tray will appear as shown below.



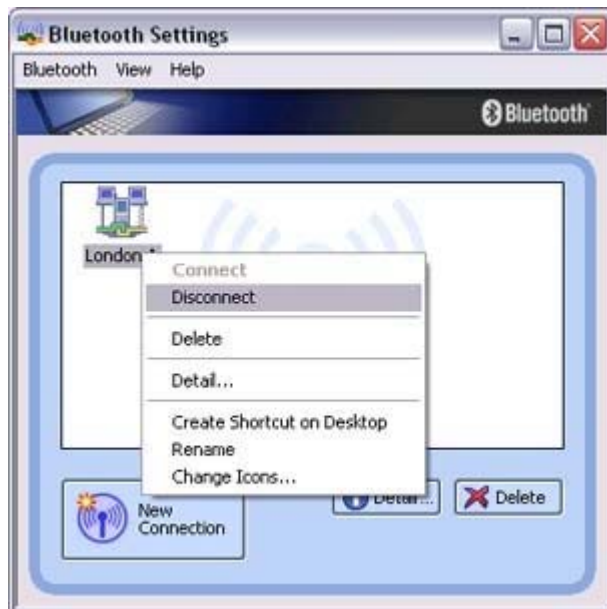
You will be able to browse Web pages using your browser and send and receive e-mail.

★ Important

- Please enter the e-mail settings separately if you are going to use e-mail (the set-up method will vary with the application).

2. End the connection

Right-click on the icon, and then click [Disconnect] to end a connection.



The following message will appear. Click on the [Yes] button.



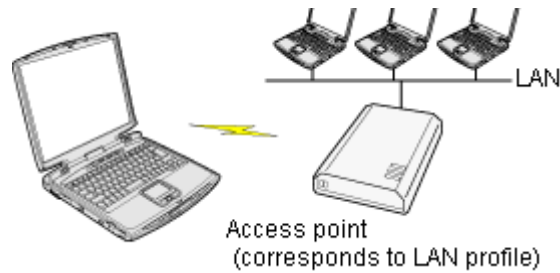
When the icon appears as shown below, the connection will have been ended.



🟡 Connecting to a LAN using an access point (LAP) [LAP]

This section describes how to connect to a network (for example, a company LAN or a personal home network) using a LAP profile-compatible access point.

Please refer to "[Using an access point \(PAN\) to connect to a LAN](#)" if you are using a PAN profile-compatible access point.



Setting up the access point Connecting to a LAN (LAP)

Important

- The access point must have been started and a normal connection already established to the network before the access point is set up. Please refer to the access point instruction manual for information on how to set up the access point.
- A Bluetooth passkey (PIN code) is required for you to connect to the access point. Please make a note of your Bluetooth passkey before you start the set-up process.

Setting up the access point

Procedure

1. Turn on the access point, and confirm that a connection has been established with the network
2. Right-click the Bluetooth icon in the task tray, and then click on [Add New Connection]



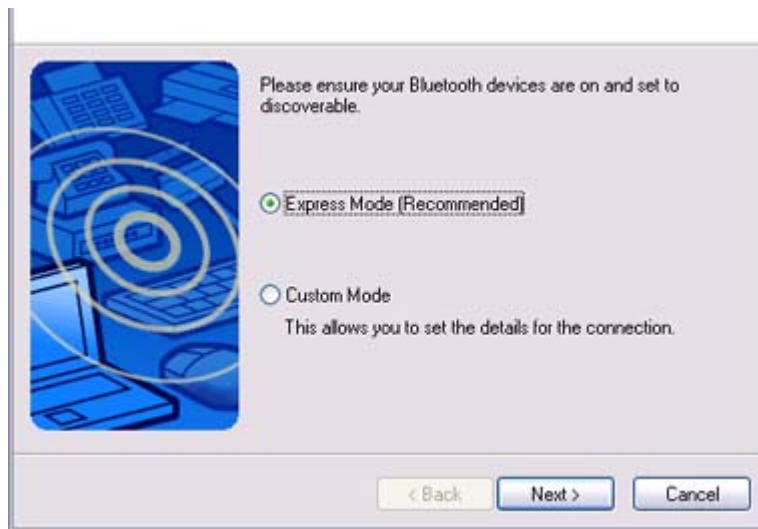
Note

- Alternatively, click [Start] [All Programs] [Bluetooth] [Bluetooth Settings], and then click on [New Connection] from the active [Bluetooth Settings] window.

The [Add New Connection Wizard (Welcome to the Add New Connection Wizard)] window will appear.

3. Confirm that [Express Mode] has been selected, and then click on the [Next] button





The [Add New Connection Wizard (Searching for Bluetooth devices)] window will appear.



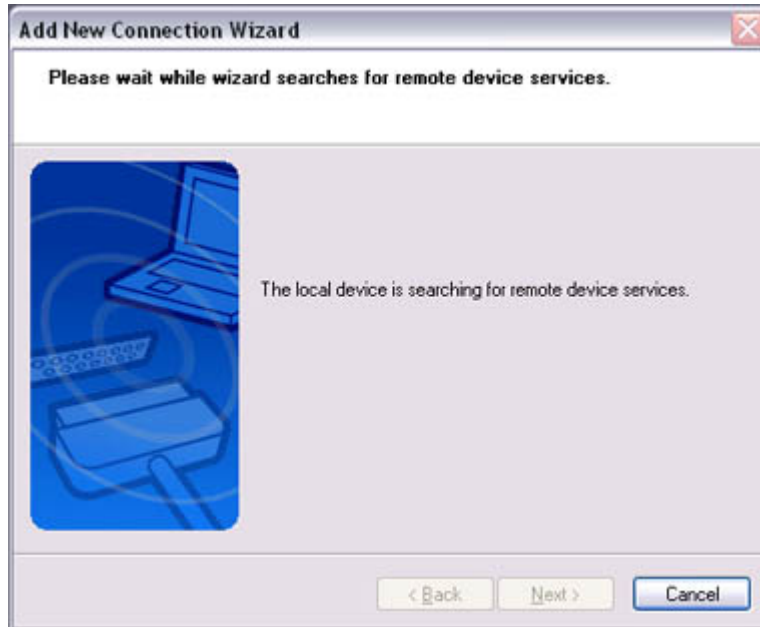
Once the program has finished searching for the devices, the [Add New Connection Wizard (Device Selection)] window will appear.

4. Select the device name of the access point from [Device List], and then click on the [Next] button





The [Add New Connection Wizard (Searching for Services)] window will appear.



You will be asked for the Bluetooth passkey in the window that appears.

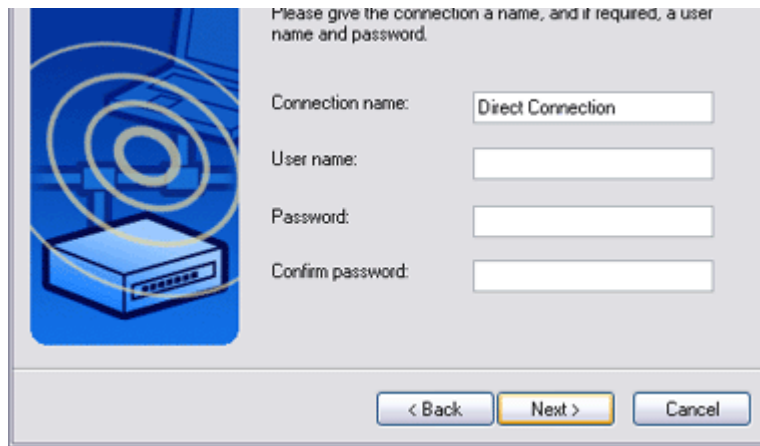
5. Enter the passkey under [Bluetooth Passkey (PIN code)], and then click on the [OK] button



Service detection and COM port creation will be performed automatically. The [Add New Connection Wizard (Create Connection Destination)] window will appear.

6. Enter the connection name, user name and password, then click on the [Next] button





Note

- The user name and password are entered here to allow you to connect to the access point.

The [Add New Connection Wizard (Confirm Dial-up Settings)] window will appear.

7. Click on the [Confirm Settings] button

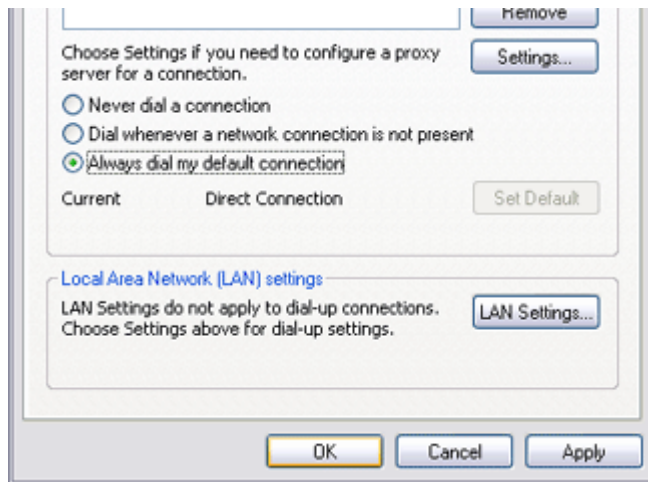


The [Internet Options] window will appear.

8. Configure the connection method, and then click on the [OK] button

Set the connection destination used for the LAN connection set up in (6) above as the [default connection destination](#), and then select "Always dial my default connection."





9. Click on the [Next] button



The [Add New Connection Wizard (Connection Name Settings)] window will appear.

10. Enter the type and name of the icon displayed after registration, and then click on the [Next] button

Please click on the [Next] button if you are satisfied with the settings.

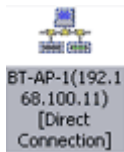




The [Add New Connection Wizard (Completing the Add New Connection Wizard)] window will appear.

11. Click on the [Finish] button

The access point icon will be registered in the [Bluetooth Settings] window.



This will complete the access point set-up process.

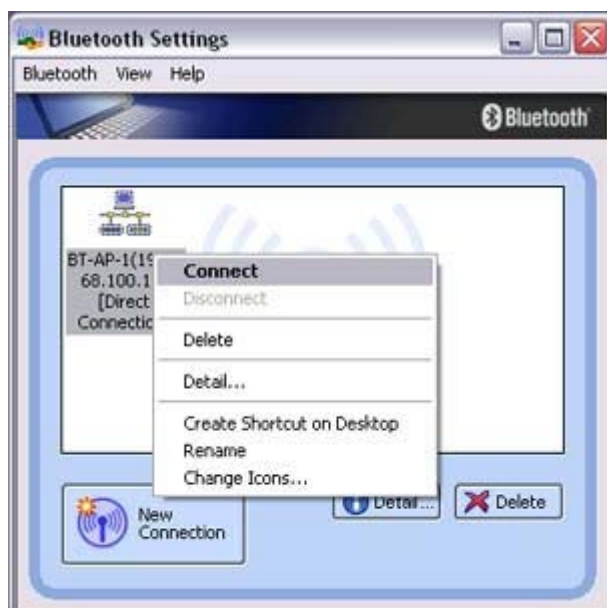
"Connecting to a LAN (LAP) "



Connecting to a LAN (LAP)

Procedure

1. Right-click on the connection icon in the [Bluetooth Settings] window, and then click on [Connect]



The [Dial-up Connection] window will appear

The [Dial-up Connection] window will appear.

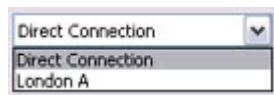
2. Confirm that "Direct connection" has been selected under [Connection Destination], and then click on the [Connect] button



A connection will be initiated.

Note

- This is an example of what happens when you use "Direct connection" as a connection name under "Connect to access point." If a name different from the connection name is used, that name will appear under [Connection Destination].
- Please simply click on [Settings] if no user name or password have been entered (i.e., if those fields have been left blank)
- Please change the connection destination if a different connection name (for a dial-up connection) appears in [Connection Destination].



Related topic ["Changing the default connection destination"](#)

Once you connect to the network, Internet Explorer will start automatically, and you will be able to exchange data with other computers on the network.

Note

- Please follow the procedure below if you need to set up a proxy server to connect to the Internet (the following procedure is not necessary if the PC you are going to use has already been set up as a proxy server).

1 Select [Internet Options...] from the [Tools] menu in Internet Explorer

The [Internet Options] window will appear.

2 Click on the [Connections] tab, and then click on the [Settings...] button




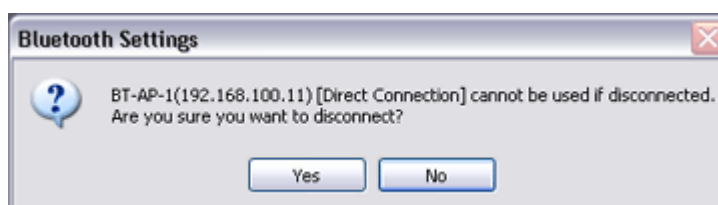


3 Enter the IP address and port number of the proxy server under [Proxy Server], and then click on the [OK] button



3. End the connection

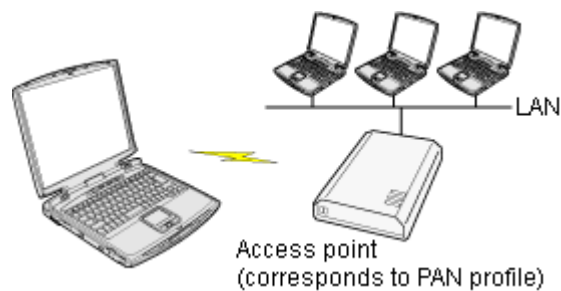
Right-click either on the connection icon under the [Bluetooth Settings] window or on the  icon in the task tray, and then click on [Disconnect].



Click on the "Yes" button in the disconnection confirmation dialog box that appears.

Connecting to a LAN using an access point (PAN) [PAN]

This section describes how to connect to a network (for example, a company LAN or a personal home network) using a PAN profile-compatible access point. Please refer to "[Using an access point \(LAP\) to connect to a LAN](#)" if you are using a LAP profile-compatible access point.



[Setting up the access point](#)
[Connecting to a LAN \(PAN\)](#)

Important

- The access point must be started and a normal connection already established to the network before the access point is set up. Please refer to the access point instruction manual for information on how to set up the access point.
- A Bluetooth passkey (PIN code) is required for you to connect to the access point. Please make a note of your Bluetooth passkey before you start the set-up process.

Setting up the access point

Procedure

1. Turn on the access point, and confirm that a connection has been established with the network
2. Right-click the Bluetooth icon in the task tray, and then click on [Add New Connection]



 **Note**

- Alternatively, click [Start] [All Programs] [Bluetooth] [Bluetooth Settings], and then click on [New Connection] from the active [Bluetooth Settings] window.

The [Add New Connection Wizard (Welcome to the Add New Connection Wizard)] window will appear.

3. Confirm that [Express Mode] has been selected, and then click on the [Next] button



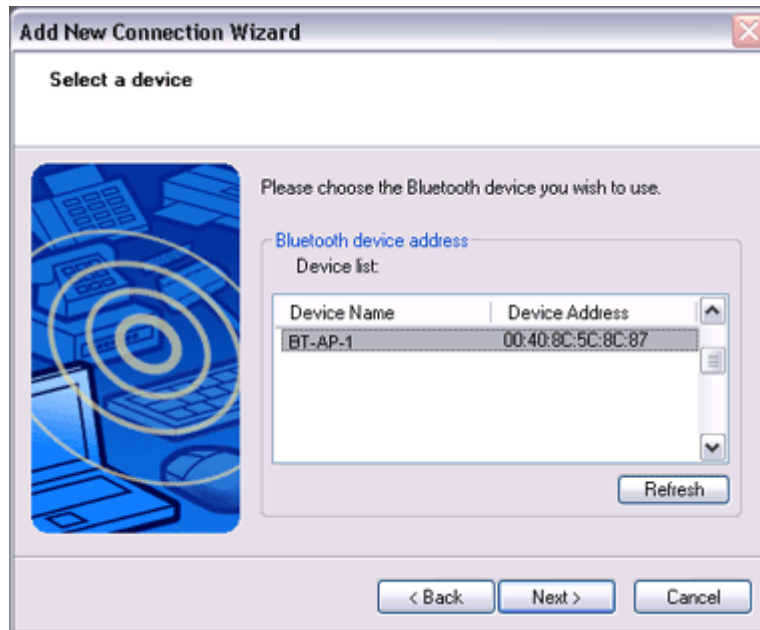
The [Add New Connection Wizard (Searching for Bluetooth devices)] window will appear.



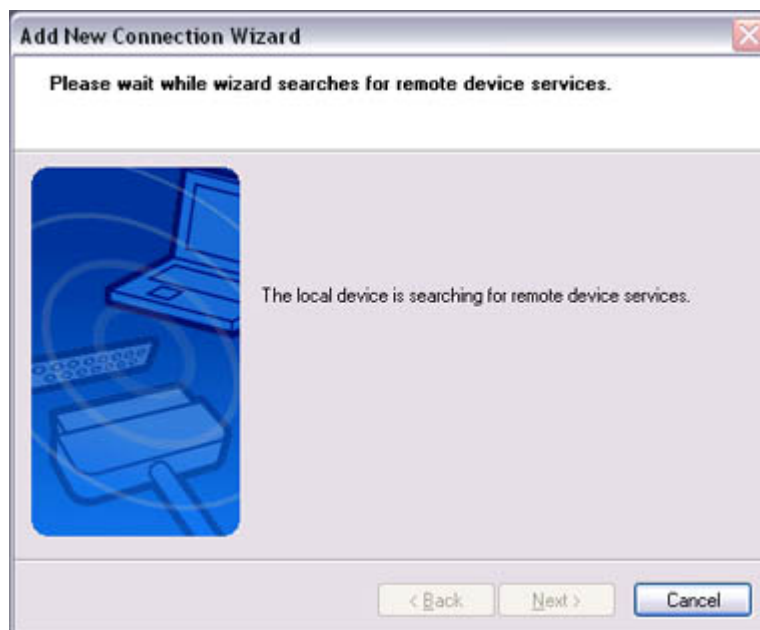
Once the program has finished searching for the devices, the [Add New Connection Wizard (Device Selection)] window will appear.

4. Select the device name of the access point from [Device List], and then click on the

[Next] button



The [Add New Connection Wizard (Searching for Services)] window will appear.



You will be asked for the Bluetooth passkey in the window that appears.

5. Enter the passkey under [Bluetooth Passkey (PIN code)], and then click on the [OK] button





Service detection and COM port creation will be performed automatically.
The [Add New Connection Wizard (Connection Name Settings)] window will appear.

6. Enter the type and name of the icon displayed after registration, and then click on the [Next] button

Please click on the [Next] button if you are satisfied with the settings.



The [Add New Connection Wizard (Completing the Add New Connection Wizard)] window will appear.

7. Click on the [Finish] button

The access point icon will be registered in the [Bluetooth Settings] window.



This will complete the access point set-up process.

"Connecting to a LAN (PAN)"

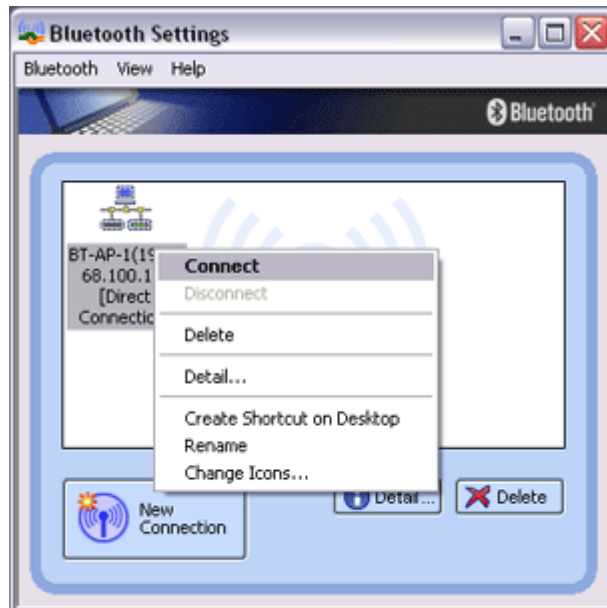


 **Connecting to a LAN (PAN)**



Procedure

1. Right-click on the connection icon in the [Bluetooth Settings] window, and then click on [Connect]



You will be asked for the Bluetooth passkey in the window that appears.

2. Enter the passkey under [Bluetooth Passkey (PIN code)], and then click on the [OK] button



A connection will be initiated.

Once you have connected to the network, Internet Explorer will start automatically, and you will be able to exchange data with other computers on the network.

Note

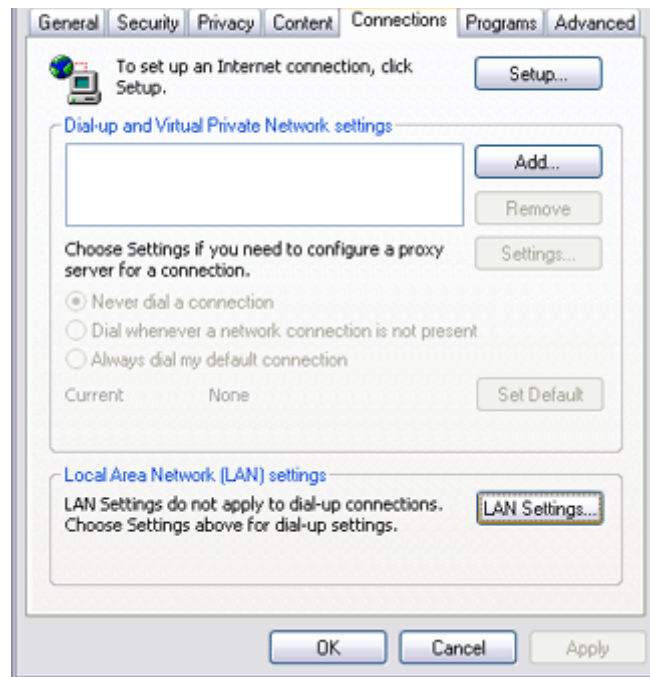
- Please follow the procedure below if you need to set up a proxy server to connect to the Internet (the following procedure is not necessary if the PC you are going to use has already been set up as a proxy server).

1 Select [Internet Options...] from the [Tools] menu in Internet Explorer

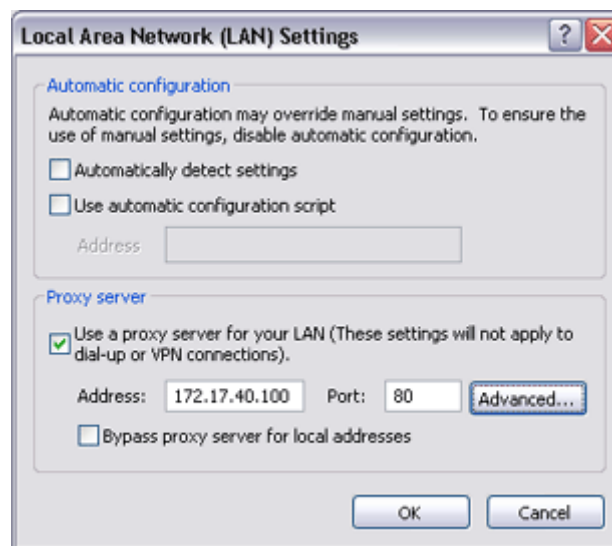
The [Internet Options] window will appear.

2 Click on the [Connections] tab, and then click on the [LAN Settings...] button




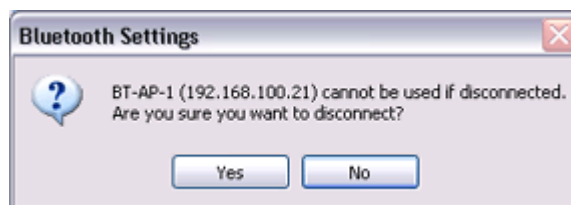


3 Enter the IP address and port number of the proxy server under [Proxy Server], and then click on the [OK] button



3. End the connection

Right-click either on the connection icon under the [Bluetooth Settings] window or on the  icon in the task tray, and then click on [Disconnect].



Click on the "Yes" button in the disconnection confirmation dialog box that appears.

Building a personal area network [PAN]

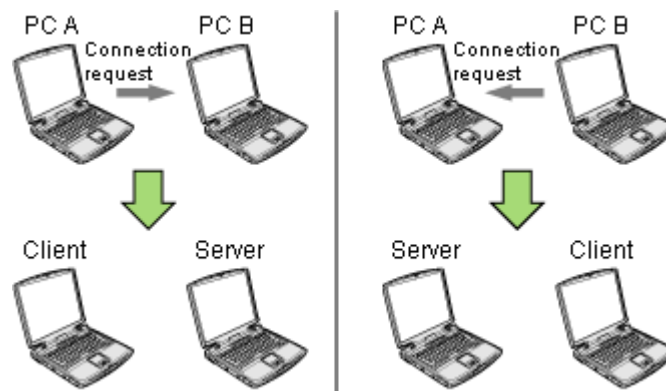
You can use the PAN profile to build a network of Bluetooth -enabled devices.



Operating as a server
Operating as a client

A personal area network comprises a client-server architecture. The device to which other devices connect is called the "server", and a device that connects to the server is called a "client."

The client-server relationship is not necessarily a fixed one. The first of two devices to establish a connection can be the server when one other device is present, and can be the client in other instances.

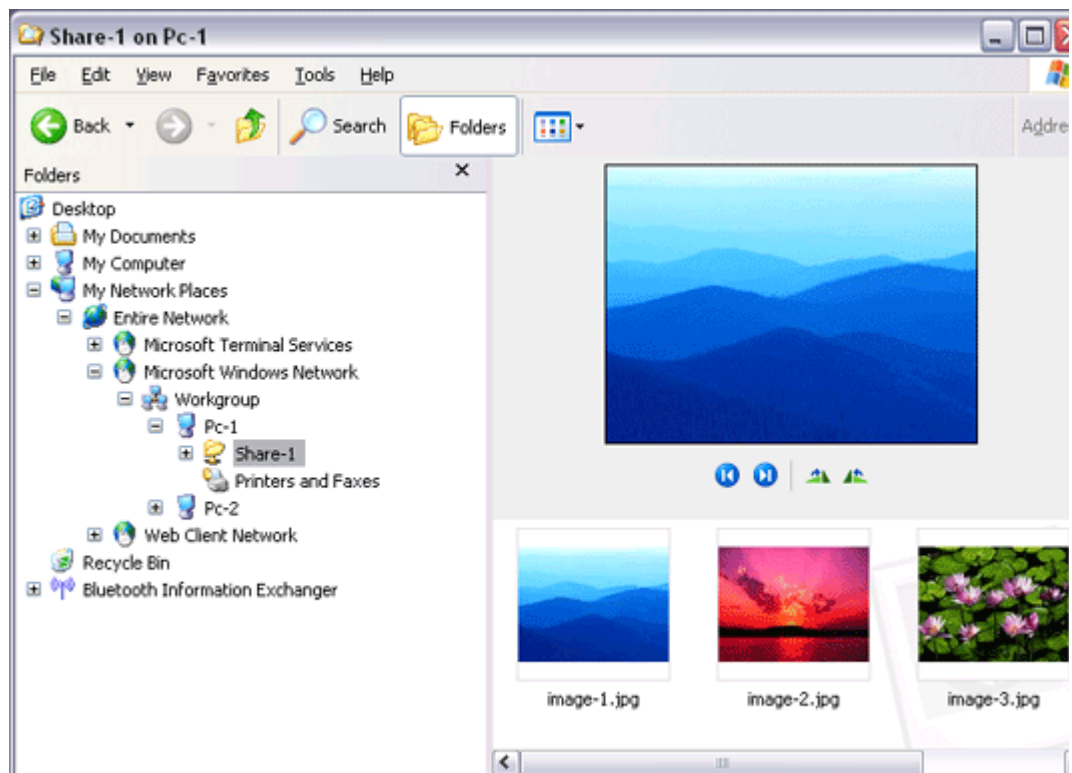
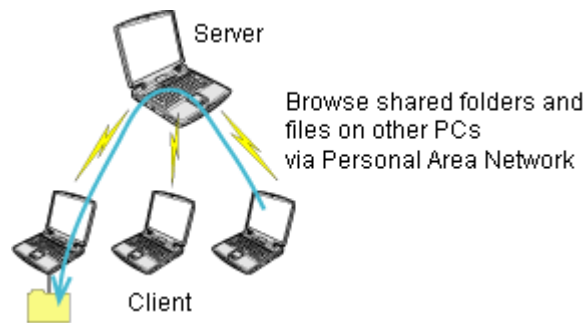


Note

- The maximum total number of devices that can be used to constitute a single personal area network is seven: one server and six clients. A network comprising as many as seven devices could theoretically be built, but an operating environment that involves the use of other Bluetooth devices, leaving aside other complications, might require the network to comprise fewer components..

By using the PAN profile, you will be able to build a network that uses the same TCP/IP protocol used in regular LANs. Accordingly, the machine designated as the server can be used for configuration tasks that utilize DHCP, such as assigning IP addresses to clients.

In addition, you will be able to configure folder and file sharing, which will allow data to be browsed by other servers or clients on the network.



★ Important

- Please refer to Windows Help for further information on TCP/IP, DHCP and configurations for sharing.

● Operating as a server

The following icon will appear in the tasktray when the PAN server function has been activated.



Should the icon not appear, please follow the procedure below to activate the PAN server function.

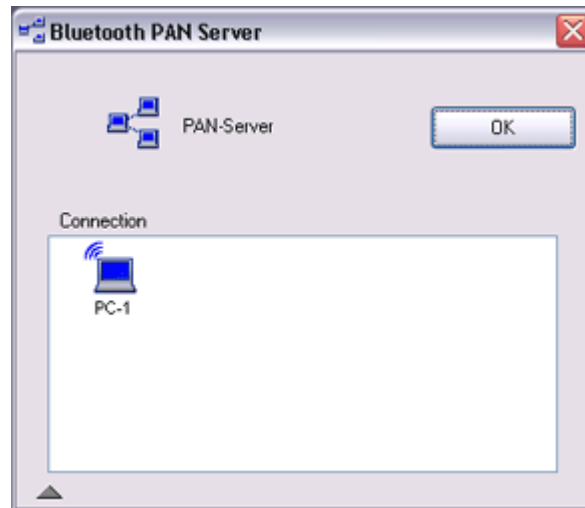
1. Right-click the Bluetooth icon in the task tray and make sure the Option [Use PAN Group Ad-hoc Network] is enabled.
A message will appear asking you to confirm whether you wish to activate the PAN group ad-hoc network.
2. Click the [Yes] button

The PAN server will be activated, and an icon will accordingly appear in the tasktray. Other devices that use the PAN profile will now be able to connect over the network.

Important

- When using the device as the server, make sure that all user accounts have a password set for the security reasons.

By clicking on the icon, the [Bluetooth PAN Server] window will appear. In the graphic below, one client has established a connection.



Note

- When you try to connect to another server as a client, the task tray icon will disappear, and your machine will not be able to function as a server in response to connection requests originating from other devices.

Operating as a client

Connecting to a server as a client is performed from the [Bluetooth Settings] window, as described below.

Procedure

1. Right-click on the Bluetooth icon in the task tray, and click on [Add New Connection]



Note

- Alternatively, click on [Start] [All Programs] [Bluetooth] [Bluetooth Settings], and then on [New Connection] from the [Bluetooth Settings] window.
2. Confirm that [Express Mode] has been selected, and then click on the [Next] button



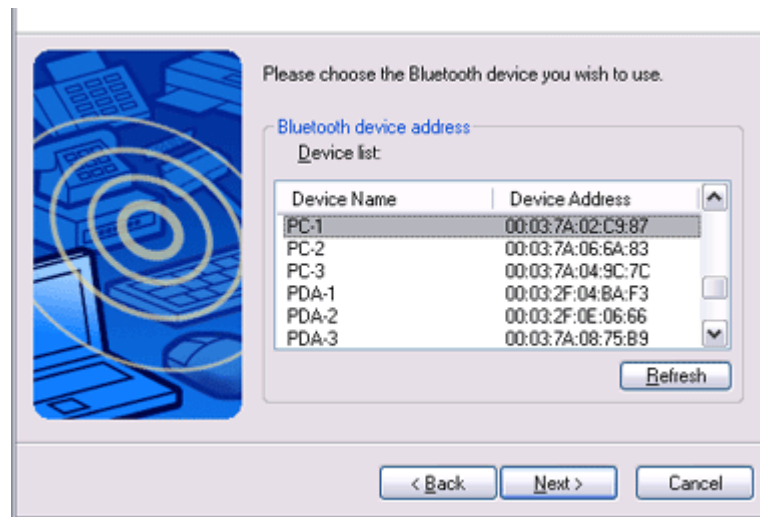
3. Click on the [Next] button in the advisory dialog box
The [Add New Connection Wizard (Searching for Bluetooth devices)] window will appear.



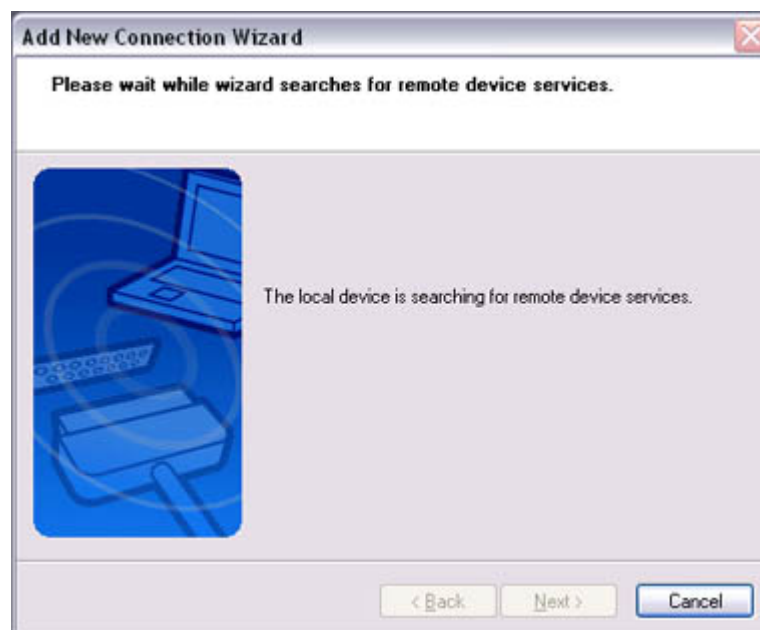
Once the program has finished searching for the devices, the [Add New Connection Wizard (Device Selection)] window will appear.

4. Select the name of the device designated as the server from [Device List], and then click on the [Next] button





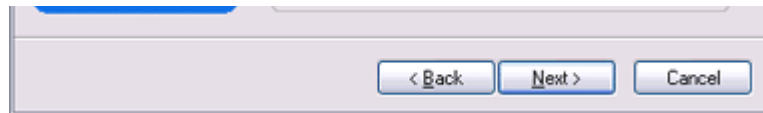
The [Add New Connection Wizard (Searching for Services)] window will appear.



The [Add New Connection Wizard (Confirm Connection Name)] window will appear.

5. Click on the [Next] button





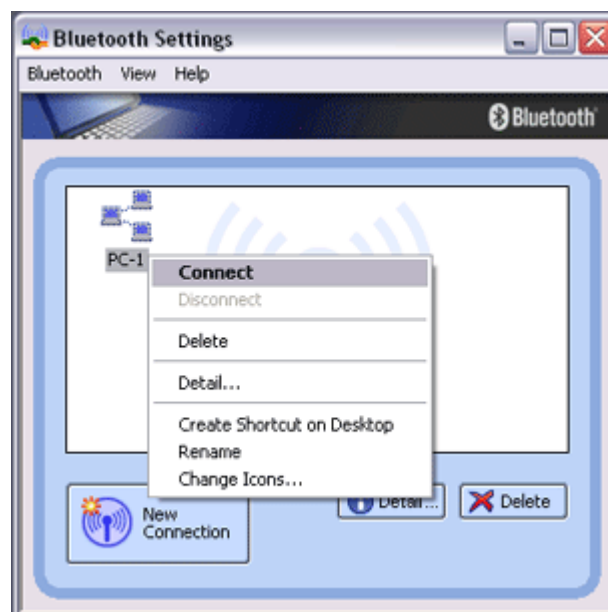
The registered icon will appear in the [Bluetooth Settings] window.



Connecting to a server

Procedure

1. Right-click on the icon in the [Bluetooth Settings] window, and then click on [Connect]



Once you have connected, the icon will change to indicate that the device is connected.

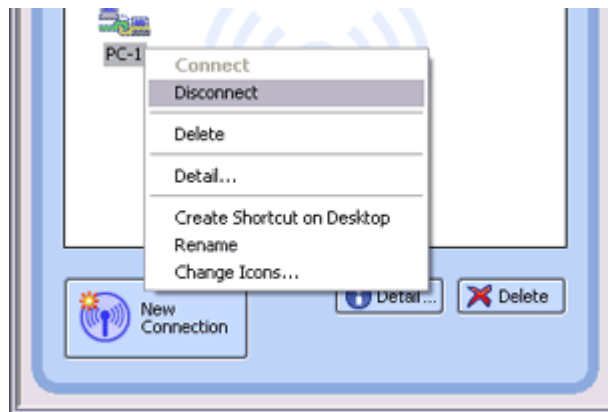


Ending a connection to a server

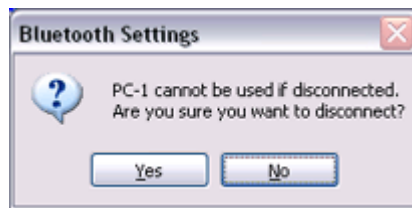
Procedure

1. Right-click on the icon in the [Bluetooth Settings] window, and then click on [Disconnect]





A message confirming whether you wish to disconnect will appear. Click on the [Yes] button.

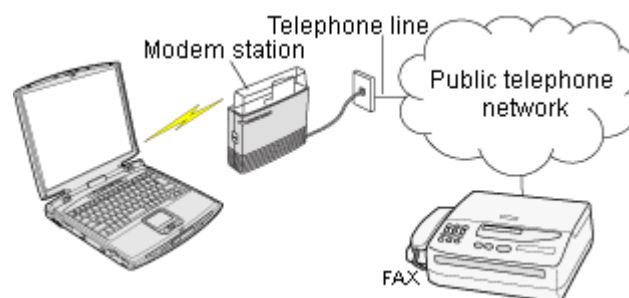


Once you have disconnected, the icon will change to indicate that the device is not connected.



Using a modem station for fax transmissions [FAX]

This section describes how to send a fax using a Bluetooth wireless modem station.



[Setting up the modem station](#)
[Installing a modem](#)
[Setting fax information](#)
[Sending a fax](#)

Receiving a fax

Important

- Please refer to the modem station instruction manual for information on how to connect the station to a telephone line.
- Please ensure that any drivers used to connect the PC to the modem have been installed.
- A Bluetooth passkey (PIN code) is required for you to connect to the modem station. Please make a note of your Bluetooth passkey before you start the set-up process.
- A fax application is required for you to be able to send and receive faxes. The description below is based on an example using Microsoft Fax, which is installed with Windows XP as standard.

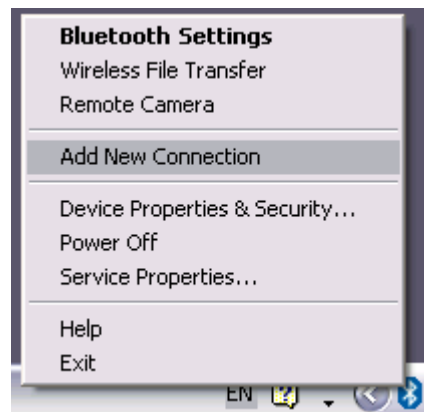
If you are going to use a commercially available fax application, then please refer to the manual that came with the application for information on how to send and receive faxes.

Setting up the modem station

Set up and register the modem station as a fax service.

Procedure

1. Turn on the wireless modem station
2. Right-click on the Bluetooth icon in the task tray, and then click on [Add New Connection]



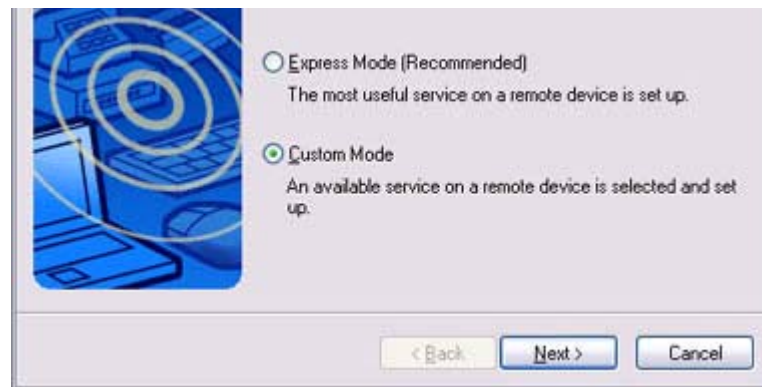
Note

- Alternatively, click [Start] [All Programs] [Bluetooth] [Bluetooth Settings], and then click on [New Connection] from the active [Bluetooth Settings] window.

The [Add New Connection Wizard (Welcome to the Add New Connection Wizard)] window will appear.

3. Select [Custom Mode], and then click on the [Next] button





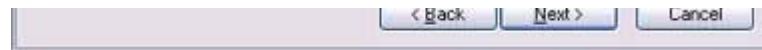
The [Add New Connection Wizard (Searching for Bluetooth devices)] window will appear.



Once the program has finished searching for the devices, the [Add New Connection Wizard (Select Device)] window will appear.

4. Select the device name of the wireless modem station from [Device List], and then click on the [Next] button





The [Add New Connection Wizard (Searching for Services)] window will appear.



5. If you are connecting to the wireless modem station for the first time, enter the passkey for the device from the [Bluetooth Passkey (PIN Code)] window, and then click on the [OK] button



Once the program has finished searching for the services, the [Add New Connection Wizard (Select Service)] window will appear.

6. Select "Fax" under [Select Service], and then click on the [Next] button





The [Add New Connection Wizard (Connecting to Remote Device)] screen will appear.

The COM port and modem registration process will then be automatically performed.



Once the COM port and modem (standard 33600 bps type) registration is complete, the [Add New Connection Wizard (Setting Connection Name)] screen will appear.

7. Configure the type and name of the icon to appear after registration, and click on the [Next] button.

Please click only on the [Next] button once you are satisfied with the configuration.



The [Add New Connection Wizard (Completing the Add New Connection Wizard)] screen will appear.

8. Click on the [Finish] button

The settings will be registered, and the icon will appear on the [Bluetooth Settings] screen.



Setting FAX information

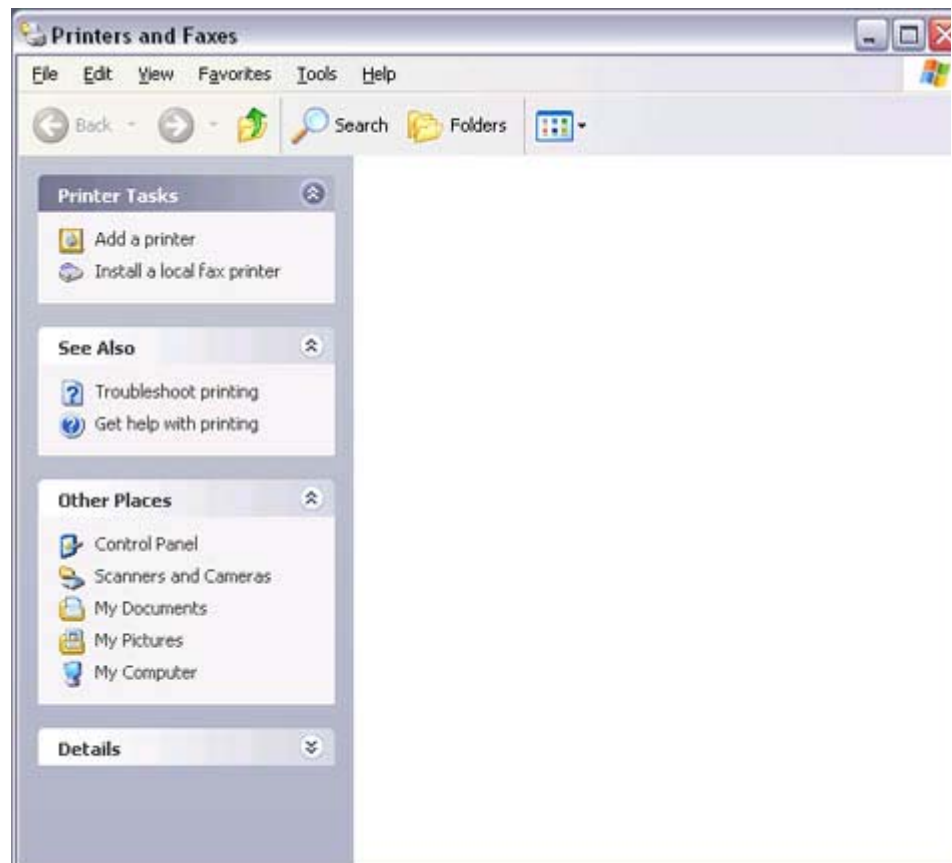
Configure send/receive settings and register fax information.

Procedure

1. Select [Start] [Control Panel], and then double-click on the [Printers and Other Hardware] icon

Note

- If the control panel is displayed in "Classic view", and you use Windows 2000, please start from Step (2).
2. Double-click on the [Printers and Faxes] icon
The [Printers & Faxes] window will appear.
 3. Click on "Install a local fax printer" in the [Printers and Faxes] window

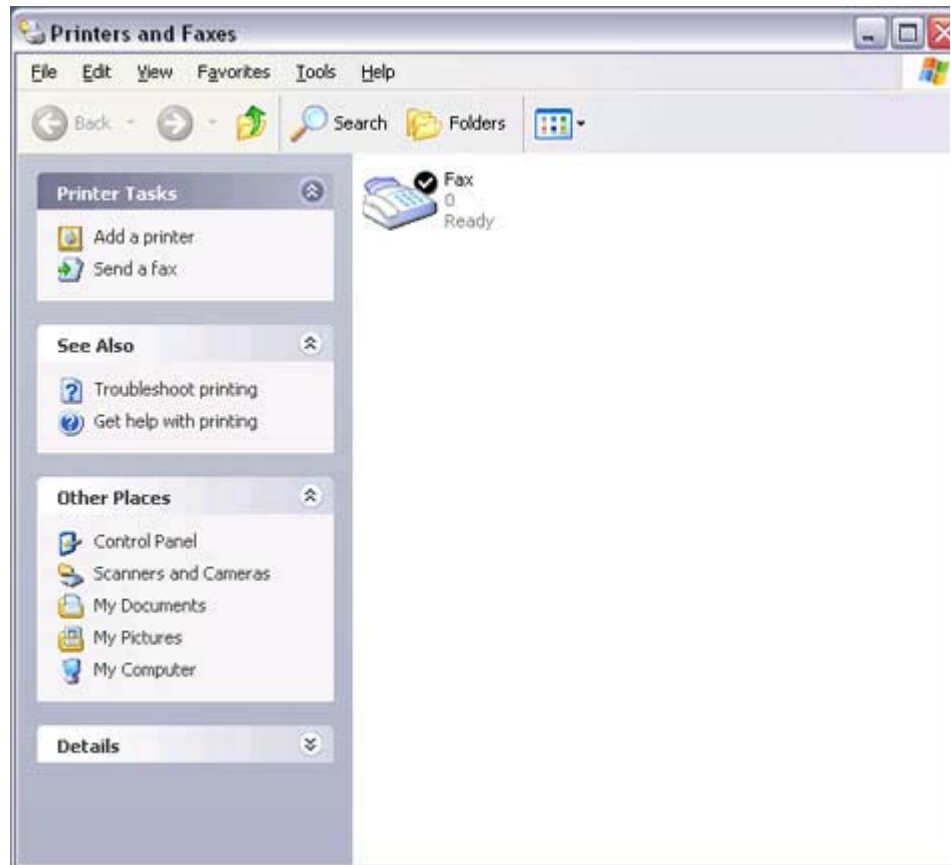


A window showing installed programs will appear, and a Fax icon will have been

created in the [Printers and Faxes] screen.



4. Click on "Send a fax" under "Printer Tasks" on the left side of the window



If you have not yet configured a fax device, the [Fax Configuration Wizard] window will appear. In the window you can enter settings pertaining to the sender (yourself).

Note

- If the fax configuration information has already been registered, the [Send Fax Wizard] window, which can be viewed under " [Sending a fax](#)" below, will appear instead of the [Fax Configuration Wizard] window.

5. Enter the sender information, and click on the [Next] button

Fax Configuration Wizard

Sender Information
Enter sender information that will appear on fax cover pages.

Your full name: Fax number:

E-mail address:

Title: Company:

Office location: Department:

Home phone: Work phone:

Address:

Billing code:

< Back Next > Cancel

Note

- The sender information that you configure here will be automatically appended as header information when you send a fax.

The [Fax Configuration Wizard (Select Device for Sending or Receiving Faxes)] window will appear.

6. Select a device to be used for fax transmissions, enable the device for sending or receiving, and then click on the [Next] button

Fax Configuration Wizard

Select Device for Sending or Receiving Faxes
Select the device that you want to use to send or receive faxes.

Please select the fax device
Bluetooth Modem

Enable Send
 Enable Receive

Manual answer
 Automatically answer after rings

< Back Next > Cancel

Note

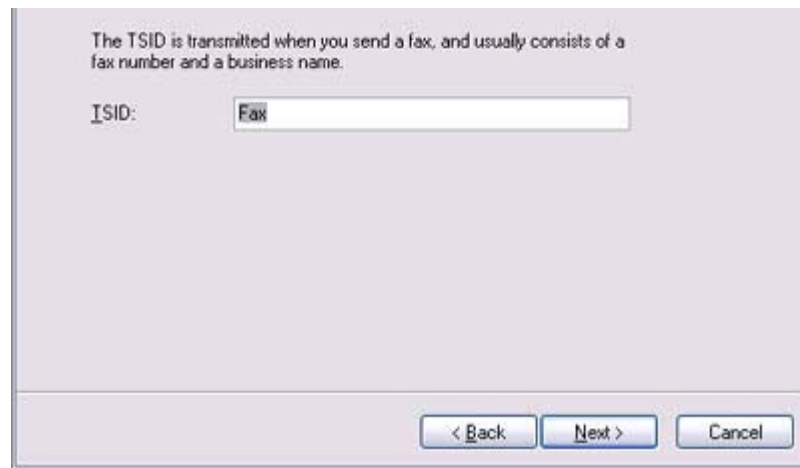
- If [Enable Receive] is selected, the device will be on standby for receiving faxes even if it is not sending or receiving anything, and therefore will be in continuous connection to the wireless modem (when **COM Auto Connect** is on). Please decide whether to select this option based on the desired objective and/or frequency of transmission.

The [Fax Configuration Wizard (Transmitting Subscriber Identification (TSID))] window will appear.

7. Click on the [Next] button
It is important that you do not change the transmitter subscriber identification.

Fax Configuration Wizard

Transmitting Subscriber Identification (TSID)
Enter the Transmitting Subscriber Identification (TSID) to be used to identify your computer to a fax recipient.



The [Fax Configuration Wizard (Completing the Fax Configuration Wizard)] window will appear.

8. Click on the [Finish] button



The fax information will be have been registered, and the [Fax Console] window will appear.

This will complete the fax set-up process.

Related topics: "[Sending a fax](#)" and "[Receiving a fax](#)"

Sending a fax

This section describes how to send a fax from the Fax Console.



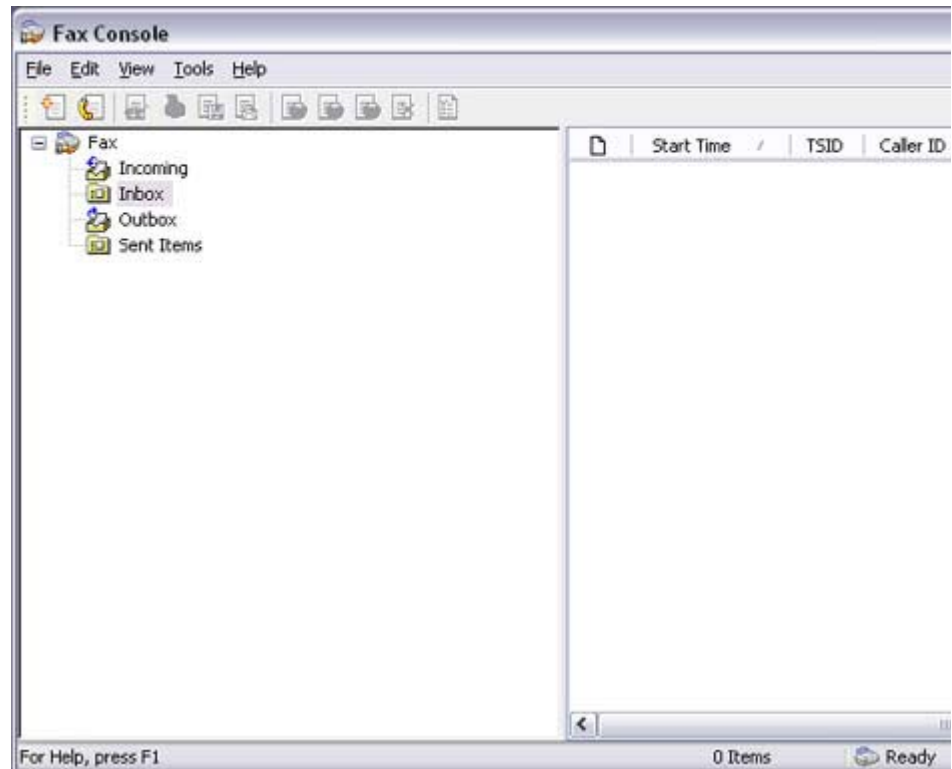
Important

 Important

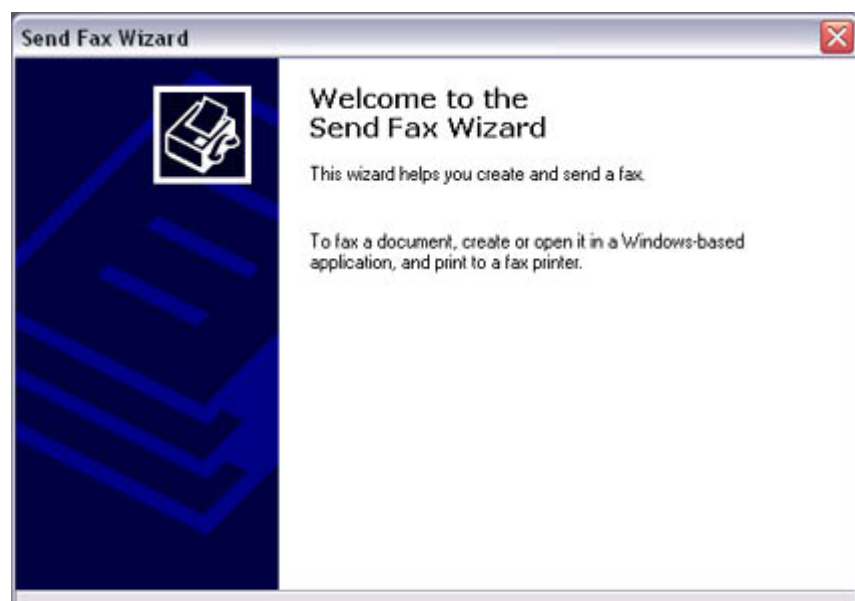
- The Fax service must be enabled for sending in order for you to send a fax. Please refer to "[Using a wireless modem station](#)" under "Troubleshooting" for how to change the send and receive settings once the service has been configured.

 Procedure

1. Double-click on the [Fax] icon in the Control Panel
The [Fax Console] window will appear.



2. In the [Fax Console] window, click [File] [Send fax]
The [Send Fax Wizard (Starting the Send Fax Wizard)] window will appear.
3. Click on the [Next] button





The [Send Fax Wizard (Recipient Information)] window will appear.

4. Enter the name and fax number of the destination party, and then click on the [Next] button

Send Fax Wizard

Recipient Information
Enter the name and number of the person you want to send the fax to, or click Address Book to select a fax recipient.

To:

Location:

Fax number: ()

Use dialing rules

To send to multiple recipients, type each recipient's information above, and then click Add to add the recipient to the list below.

Recipient name	Fax number

< Back Next > Cancel

The [Send Fax Wizard (Preparing the Cover Page)] window will appear.

5. Specify the cover page template, subject line, and note (body text), and then click on the [Next] button

Send Fax Wizard

Preparing the Cover Page
Select a cover page template, and type a subject line and note if required by the template.
This information is automatically added to the cover page.

Select a cover page template with the following information

Cover page template:

Subject line:

Note:

The [Send Fax Wizard (Schedule)] window will appear.

6. If you wish to send the fax immediately, select "Now", and then click on the [Next] button

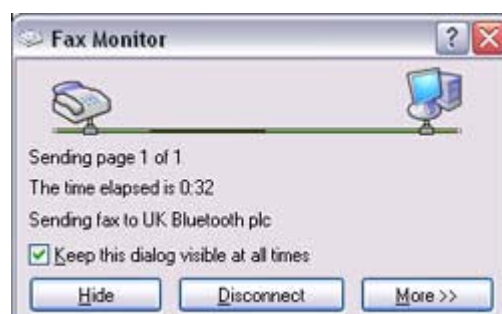


The [Send Fax Wizard (Completing the Send Fax Wizard)] window will appear.

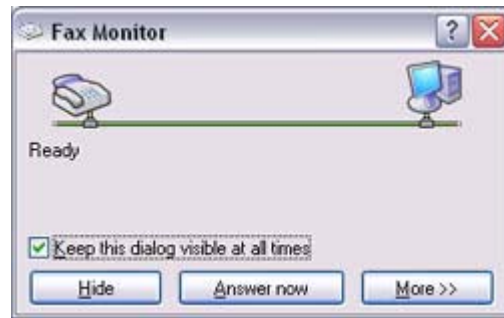
7. Confirm the destination information and transmission details, and then click on the [Finish] button



The software will automatically dial the number and send the fax.



Once the fax has been sent, Fax Monitor will revert to standby mode.



Related topic: "[Receiving a fax](#)"

Receiving a fax

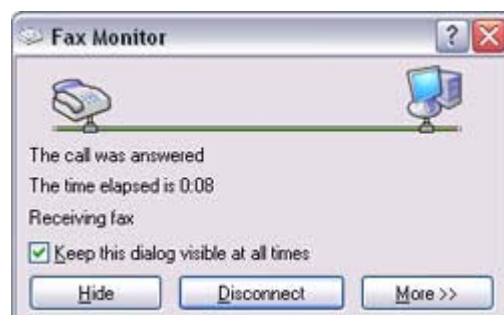
This section describes what to do when a fax arrives after you have established a connection to a modem station.

Important

- The Fax service must be enabled for receiving in order for you to receive a fax. Please refer to "[Using a wireless modem station](#)" under "Troubleshooting" for information on how to change the send and receive settings once the fax service has been configured.
- Please ensure you have connected to a modem station before you receive a fax (the device will be connected to the modem if "Enable Receive" has been selected or [COM Auto Connect](#) has been activated).

Procedure

1. When a fax arrives, the Fax Monitor will start automatically as the fax is received



Once the fax has been received, the Fax Monitor will revert to standby mode.

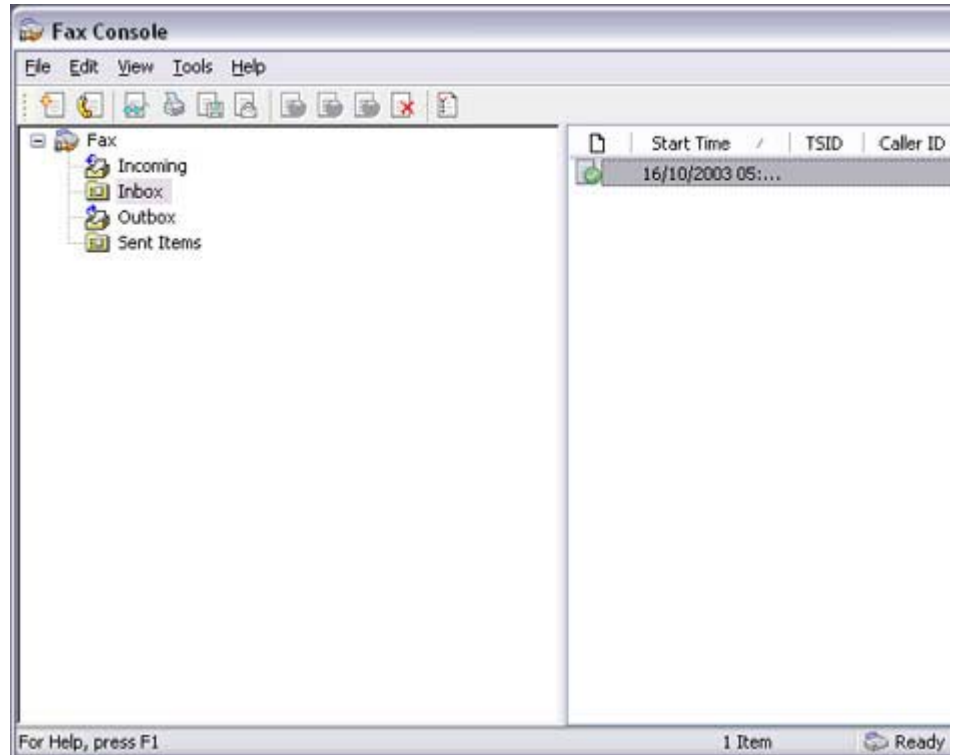
Note

- If you have enabled manual fax reception, the message below will appear when a fax arrives.



Click on the message with your mouse to receive the fax.

2. Double-click on the [Fax] icon in the Control Panel
The [Fax Console] window will appear.
3. In the [Fax Console] window, double-click on the fax that has arrived



An image of the received fax will be displayed.



Related topic: "[Sending a fax](#)"