

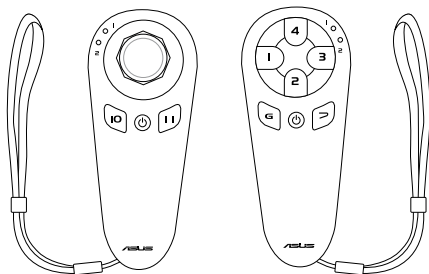


E3992

# Eee Stick

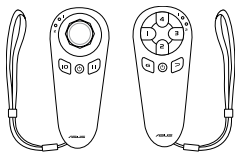
*GMC-1*

## User manual



# Package contents

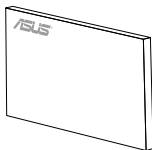
Check your Eee Stick package for the following items:



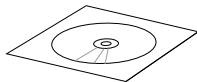
**Eee Stick controllers**



**USB dongle**



**Quick start guide**



**Support CD**



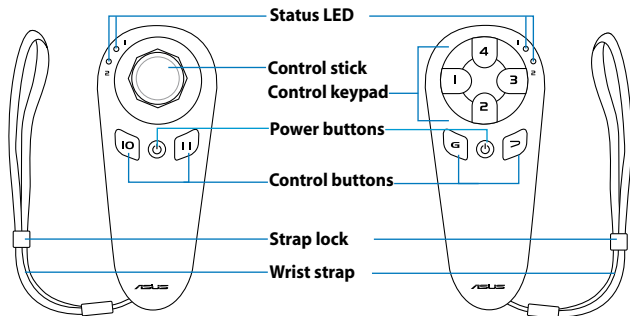
---

If any of the above items is damaged or missing, contact your retailer immediately.

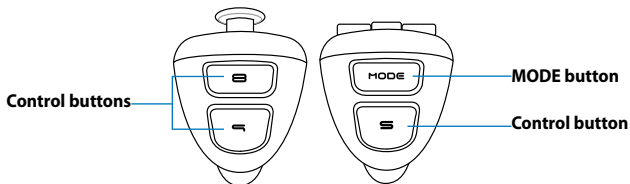
---

# Knowing your Eee Stick

## Front view



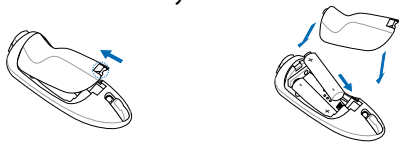
## Top view



# Using your Eee Stick

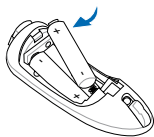
## Installing the batteries

1. Remove the battery cover.
2. Install the batteries into the slots in the correct orientation.
3. Slide back the battery cover.



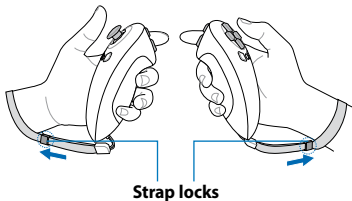
## Removing or replacing the batteries

1. Remove the battery cover.
2. Pull the edge of the battery in the right battery slot until it is released.
3. Follow step 1 and 2 to remove the battery in the left battery slot.



## Wearing the wrist straps

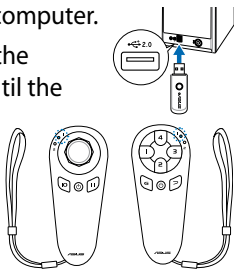
To prevent the Eee Stick from dropping while you are playing games, properly put on the wrist straps to both of your hands, and then tighten the straps using the strap locks.



## Turning on your Eee Stick

1. Connect the USB dongle to your computer.
2. Hold the power buttons on both the controllers by about 5 seconds until the LEDs light up.

Ensure that only the LED 1 on both controllers light up. The LED on the USB dongle should light up, too.



## Installing the driver

1. Place the support CD to the optical drive.
2. Click **Install GMC driver and applications**, and then follow the onscreen instructions to complete the installation.

## Launching the GMC

After the driver installation is completed, the GMC icon appears on the Windows® desktop. Double click the icon to activate the GMC application.

## **FEDERAL COMMUNICATIONS COMMISSION INTERFERENCE STATEMENT**

This equipment has been tested and found to comply with the limits for a Class B digital device, pursuant to Part 15 of the FCC Rules. These limits are designed to provide reasonable protection against harmful interference in a residential installation. This equipment generates, uses and can radiate radio frequency energy and, if not installed and used in accordance with the instructions, may cause harmful interference to radio communications. However, there is no guarantee that interference will not occur in a particular installation. If this equipment does cause harmful interference to radio or television reception, which can be determined by turning the equipment off and on, the user is encouraged to try to correct the interference by one or more of the following measures:

- Reorient or relocate the receiving antenna.
- Increase the separation between the equipment and receiver.
- Connect the equipment into an outlet on a circuit different from that to which the receiver is connected.
- Consult the dealer or an experienced radio/TV technician for help.

### **CAUTION:**

Any changes or modifications not expressly approved by the party responsible for compliance could void the user's authority to operate the equipment.

"This device complies with Part 15 of the FCC Rules. Operation is subject to the following two conditions:

- (1) this device may not cause harmful interference and
- (2) this device must accept any interference received, including interference that may cause undesired operation ."