

Appendix C – Highest Test Plots

Test Date : 2024-02-28 | Ambient Temp : 22.6 °C | Tissue Temp : 22.2 °C

Test Mode

1_WCDMA Band II_RMC12.2Kbps_Top Side_0mm_Ch9262_Ant Main_Sample 1_INPAQ

Device Under Test Properties

Manufacturer or Brand	Model No. or Code Name	Sample No. or IMEI	DUT Type
ASUS	CR1204FG	S1NTLP00330018	Convertible PC

Exposure Conditions

Phantom Section	Band	Group, UID	Frequency [MHz], Channel Number	Conversion Factor	TSL Conductivity [S/m]	TSL Permittivity
Flat	Band 2	WCDMA, 10011 - CAC	1852.400, 9262	7.7	1.44	40.9

Hardware Setup

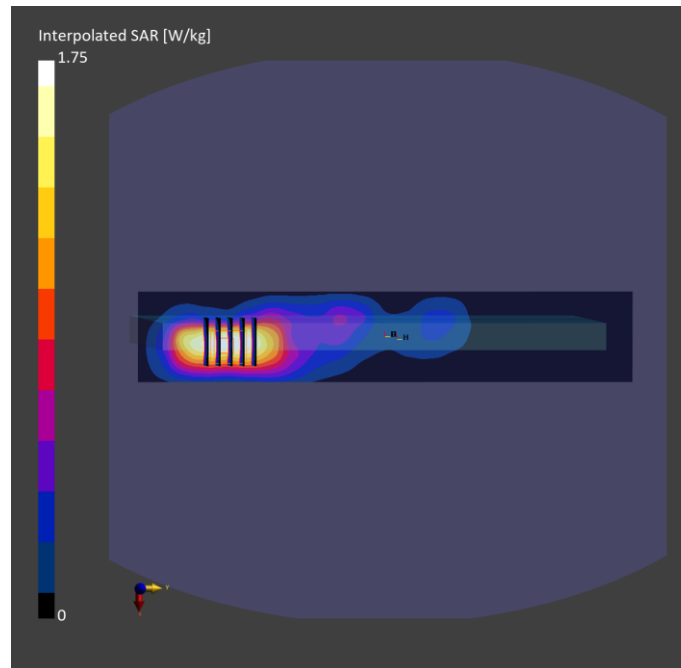
Phantom	Tissue Simulating Liquid	Probe Calibration Date	DAE Calibration Date
ELI V8.0 (20deg probe tilt) - 2141	HBBL-600-10000	EX3DV4 - SN7737 / 2023-06-05	DAE4 Sn1743 / 2023-08-17

Scan Setup

	Area Scan	Zoom Scan
Grid Extents [mm]	60.0 x 330.0	32.0 x 32.0 x 30.0
Grid Steps [mm]	15.0 x 15.0	8.0 x 8.0 x 5.0
Sensor Surface [mm]	3.0	1.4
Graded Grid	N/A	Yes
Grading Ratio	N/A	1.4

Measurement Results

	Area Scan	Zoom Scan
psSAR-1g [W/kg]	0.830	0.878
psSAR-10g [W/kg]	0.483	0.462
Power Drift [dB]		-0.01
TSL Correction	Positive only	Positive only
M2 / M1 [%]		54.6
Dist 3dB Peak [mm]		8.8



Test Date : 2024-02-23 | Ambient Temp : 22.4 °C | Tissue Temp : 22.1 °C

Test Mode

2_WCDMA Band IV_RMC12.2Kbps_Top Side_0mm_Ch1312_Ant Main_Sample 1_INPAQ

Device Under Test Properties

Manufacturer or Brand	Model No. or Code Name	Sample No. or IMEI	DUT Type
ASUS	CR1204FG	S1NTLP00330018	Convertible PC

Exposure Conditions

Phantom Section	Band	Group, UID	Frequency [MHz], Channel Number	Conversion Factor	TSL Conductivity [S/m]	TSL Permittivity
Flat	Band 4	WCDMA, 10011 - CAC	1712.400, 1312	8.03	1.34	41.8

Hardware Setup

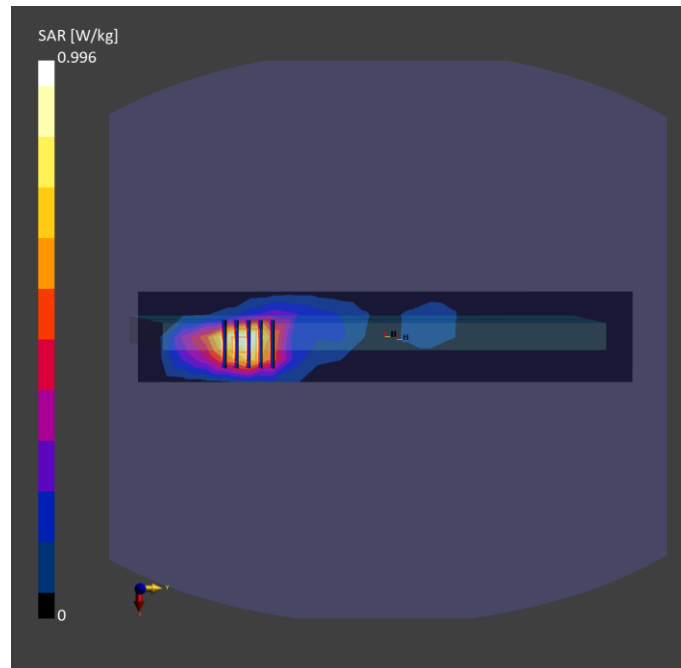
Phantom	Tissue Simulating Liquid	Probe Calibration Date	DAE Calibration Date
ELI V8.0 (20deg probe tilt) - 2141	HBBL-600-10000	EX3DV4 - SN7737 / 2023-06-05	DAE4 Sn1743 / 2023-08-17

Scan Setup

	Area Scan	Zoom Scan
Grid Extents [mm]	60.0 x 330.0	32.0 x 32.0 x 30.0
Grid Steps [mm]	15.0 x 15.0	8.0 x 8.0 x 5.0
Sensor Surface [mm]	3.0	1.4
Graded Grid	N/A	Yes
Grading Ratio	N/A	1.4

Measurement Results

	Area Scan	Zoom Scan
psSAR-1g [W/kg]	0.698	0.747
psSAR-10g [W/kg]	0.366	0.412
Power Drift [dB]		0.09
TSL Correction	Positive only	Positive only
M2 / M1 [%]		55.8
Dist 3dB Peak [mm]		9.4



Test Date : 2024-02-24 | Ambient Temp : 22.6 °C | Tissue Temp : 22.3 °C

Test Mode

3_WCDMA Band V_RMC12.2Kbps_Top Side_0mm_Ch4233_Ant Main_Sample 1_INPAQ

Device Under Test Properties

Manufacturer or Brand	Model No. or Code Name	Sample No. or IMEI	DUT Type
ASUS	CR1204FG	S1NTLP00330018	Convertible PC

Exposure Conditions

Phantom Section	Band	Group, UID	Frequency [MHz], Channel Number	Conversion Factor	TSL Conductivity [S/m]	TSL Permittivity
Flat	Band 5	WCDMA, 10011 - CAC	846.600, 4233	9.12	0.959	43.9

Hardware Setup

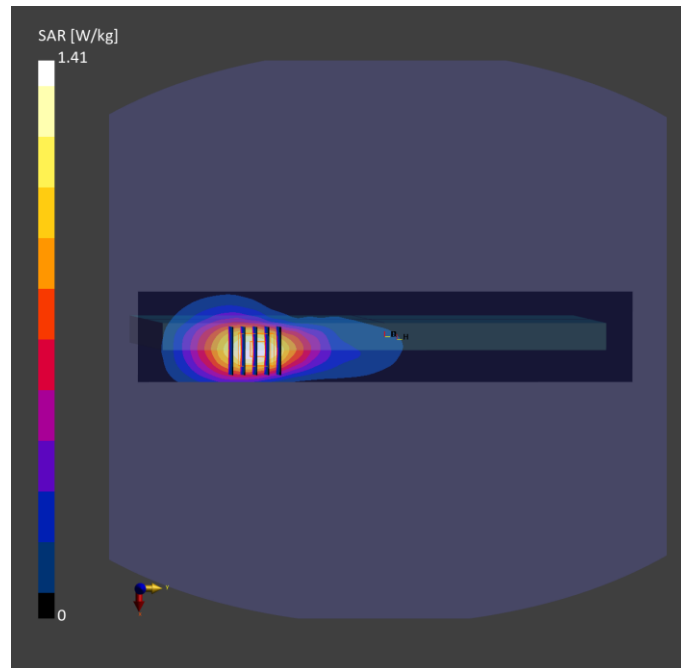
Phantom	Tissue Simulating Liquid	Probe Calibration Date	DAE Calibration Date
ELI V8.0 (20deg probe tilt) - 2141	HBBL-600-10000	EX3DV4 - SN7737 / 2023-06-05	DAE4 Sn1743 / 2023-08-17

Scan Setup

	Area Scan	Zoom Scan
Grid Extents [mm]	60.0 x 330.0	32.0 x 32.0 x 30.0
Grid Steps [mm]	15.0 x 15.0	8.0 x 8.0 x 5.0
Sensor Surface [mm]	3.0	1.4
Graded Grid	N/A	Yes
Grading Ratio	N/A	1.4

Measurement Results

	Area Scan	Zoom Scan
psSAR-1g [W/kg]	0.760	0.909
psSAR-10g [W/kg]	0.499	0.517
Power Drift [dB]		-0.06
TSL Correction	Positive only	Positive only
M2 / M1 [%]		52.8
Dist 3dB Peak [mm]		9.6



Test Date : 2024-02-25 | Ambient Temp : 22.3 °C | Tissue Temp : 21.9 °C

Test Mode

5_LTE Band 7_QPSK20M_Top Side_0mm_Ch21100_1RB_Offset0_Ant Main_Sample 1_INPAQ

Device Under Test Properties

Manufacturer or Brand	Model No. or Code Name	Sample No. or IMEI	DUT Type
ASUS	CR1204FG	S1NTLP00330018	Convertible PC

Exposure Conditions

Phantom Section	Band	Group, UID	Frequency [MHz], Channel Number	Conversion Factor	TSL Conductivity [S/m]	TSL Permittivity
Flat	Band 7	LTE-FDD, 10169 - CAF	2535.000, 21100	7.17	1.92	41.1

Hardware Setup

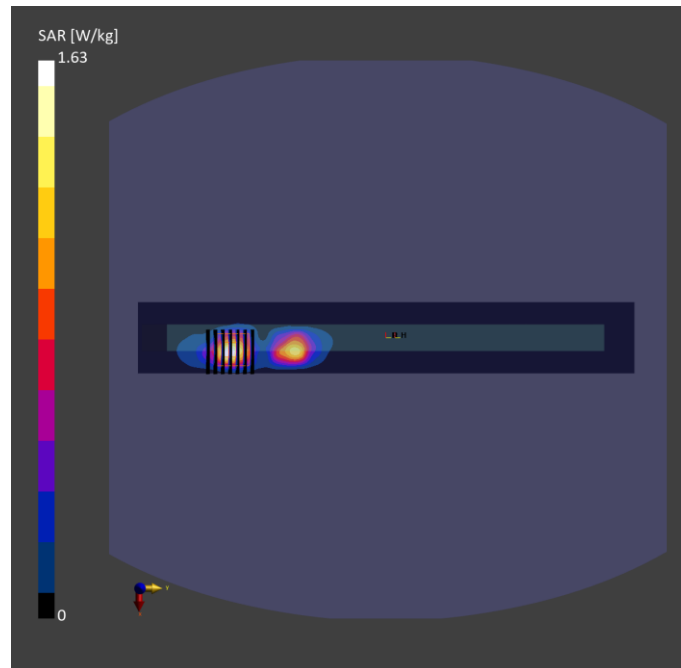
Phantom	Tissue Simulating Liquid	Probe Calibration Date	DAE Calibration Date
ELI V8.0 (20deg probe tilt) - 2141	HBBL-600-10000	EX3DV4 - SN7737 / 2023-06-05	DAE4 Sn1743 / 2023-08-17

Scan Setup

	Area Scan	Zoom Scan
Grid Extents [mm]	48.0 x 336.0	30.0 x 30.0 x 30.0
Grid Steps [mm]	12.0 x 12.0	5.0 x 5.0 x 5.0
Sensor Surface [mm]	3.0	1.4
Graded Grid	N/A	Yes
Grading Ratio	N/A	1.4

Measurement Results

	Area Scan	Zoom Scan
psSAR-1g [W/kg]	0.744	0.877
psSAR-10g [W/kg]	0.324	0.316
Power Drift [dB]		-0.13
TSL Correction	Positive only	Positive only
M2 / M1 [%]		48.2
Dist 3dB Peak [mm]		6.0



Test Date : 2024-02-27 | Ambient Temp : 22.5 °C | Tissue Temp : 22.1 °C

Test Mode

6_LTE Band 12_QPSK10M_Top Side_0mm_Ch23095_1RB_Offset0_Ant Main_Sample 1_INPAQ

Device Under Test Properties

Manufacturer or Brand	Model No. or Code Name	Sample No. or IMEI	DUT Type
ASUS	CR1204FG	S1NTLP00330018	Convertible PC

Exposure Conditions

Phantom Section	Band	Group, UID	Frequency [MHz], Channel Number	Conversion Factor	TSL Conductivity [S/m]	TSL Permittivity
Flat	Band 12	LTE-FDD, 10175 - CAH	707.500, 23095	9.22	0.841	44.0

Hardware Setup

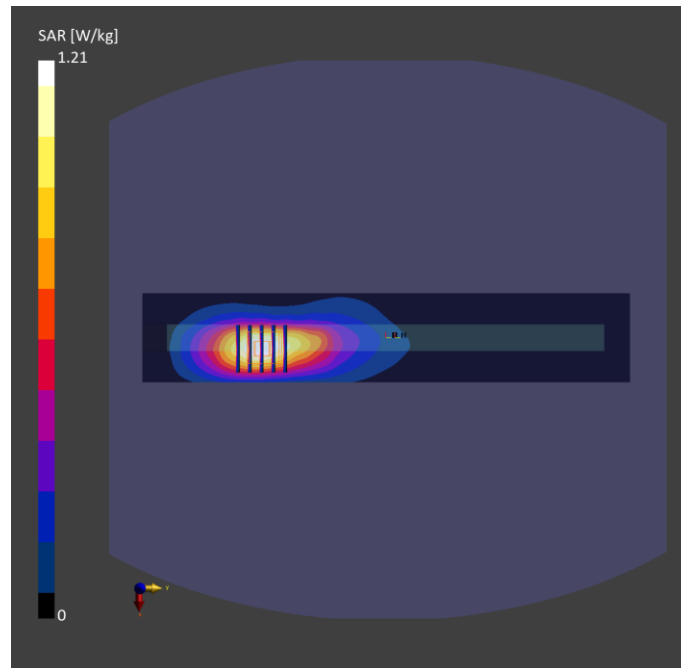
Phantom	Tissue Simulating Liquid	Probe Calibration Date	DAE Calibration Date
ELI V8.0 (20deg probe tilt) - 2141	HBBL-600-10000	EX3DV4 - SN7737 / 2023-06-05	DAE4 Sn1743 / 2023-08-17

Scan Setup

	Area Scan	Zoom Scan
Grid Extents [mm]	60.0 x 330.0	32.0 x 32.0 x 30.0
Grid Steps [mm]	15.0 x 15.0	8.0 x 8.0 x 5.0
Sensor Surface [mm]	3.0	1.4
Graded Grid	N/A	Yes
Grading Ratio	N/A	1.4

Measurement Results

	Area Scan	Zoom Scan
psSAR-1g [W/kg]	0.692	0.818
psSAR-10g [W/kg]	0.453	0.469
Power Drift [dB]		0.01
TSL Correction	Positive only	Positive only
M2 / M1 [%]		54.1
Dist 3dB Peak [mm]		10.8



Test Date : 2024-02-27 | Ambient Temp : 22.5 °C | Tissue Temp : 22.1 °C

Test Mode

7_LTE Band 13_QPSK10M_Top Side_0mm_Ch23230_1RB_Offset0_Ant Main_Sample 1_INPAQ

Device Under Test Properties

Manufacturer or Brand	Model No. or Code Name	Sample No. or IMEI	DUT Type
ASUS	CR1204FG	S1NTLP00330018	Convertible PC

Exposure Conditions

Phantom Section	Band	Group, UID	Frequency [MHz], Channel Number	Conversion Factor	TSL Conductivity [S/m]	TSL Permittivity
Flat	Band 13	LTE-FDD, 10175 - CAH	782.000, 23230	9.22	0.870	43.6

Hardware Setup

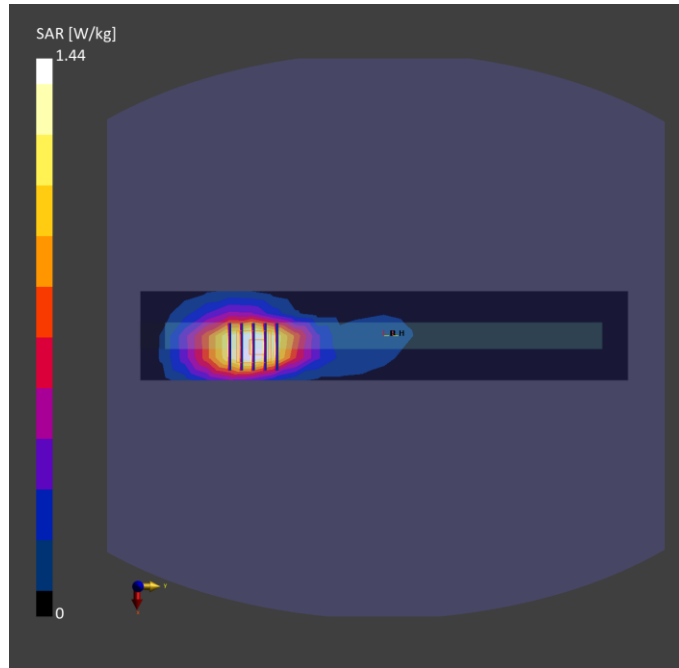
Phantom	Tissue Simulating Liquid	Probe Calibration Date	DAE Calibration Date
ELI V8.0 (20deg probe tilt) - 2141	HBBL-600-10000	EX3DV4 - SN7737 / 2023-06-05	DAE4 Sn1743 / 2023-08-17

Scan Setup

	Area Scan	Zoom Scan
Grid Extents [mm]	60.0 x 330.0	32.0 x 32.0 x 30.0
Grid Steps [mm]	15.0 x 15.0	8.0 x 8.0 x 5.0
Sensor Surface [mm]	3.0	1.4
Graded Grid	N/A	Yes
Grading Ratio	N/A	1.4

Measurement Results

	Area Scan	Zoom Scan
psSAR-1g [W/kg]	0.801	0.937
psSAR-10g [W/kg]	0.529	0.536
Power Drift [dB]		0.07
TSL Correction	Positive only	Positive only
M2 / M1 [%]		50.8
Dist 3dB Peak [mm]		10.8



Test Date : 2024-02-29 | Ambient Temp : 22.6 °C | Tissue Temp : 22.4 °C

Test Mode

8_LTE Band 14_QPSK10M_Top Side_0mm_Ch23330_1RB_Offset0_Ant Main_Sample 1_INPAQ

Device Under Test Properties

Manufacturer or Brand	Model No. or Code Name	Sample No. or IMEI	DUT Type
ASUS	CR1204FG	S1NTLP00330018	Convertible PC

Exposure Conditions

Phantom Section	Band	Group, UID	Frequency [MHz], Channel Number	Conversion Factor	TSL Conductivity [S/m]	TSL Permittivity
Flat	Band 14	LTE-FDD, 10175 - CAH	793.000, 23330	9.22	0.927	42.3

Hardware Setup

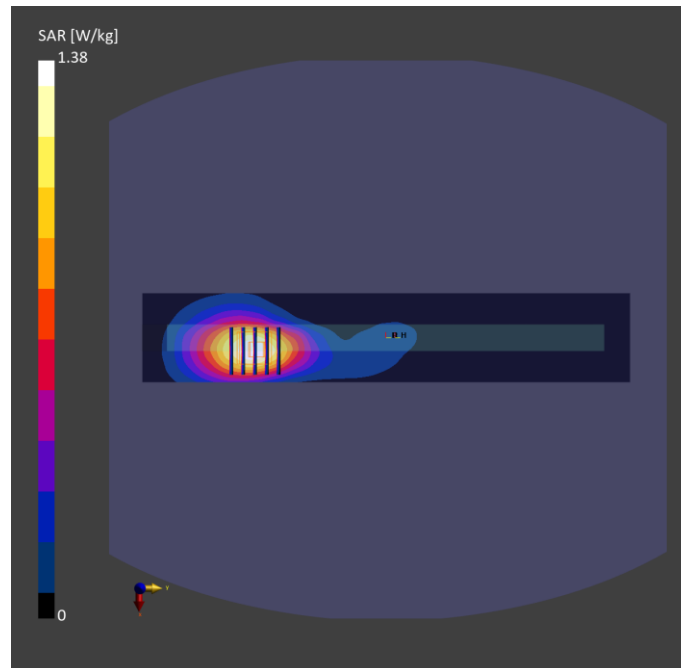
Phantom	Tissue Simulating Liquid	Probe Calibration Date	DAE Calibration Date
ELI V8.0 (20deg probe tilt) - 2141	HBBL-600-10000	EX3DV4 - SN7737 / 2023-06-05	DAE4 Sn1743 / 2023-08-17

Scan Setup

	Area Scan	Zoom Scan
Grid Extents [mm]	60.0 x 330.0	32.0 x 32.0 x 30.0
Grid Steps [mm]	15.0 x 15.0	8.0 x 8.0 x 5.0
Sensor Surface [mm]	3.0	1.4
Graded Grid	N/A	Yes
Grading Ratio	N/A	1.4

Measurement Results

	Area Scan	Zoom Scan
psSAR-1g [W/kg]	0.756	0.880
psSAR-10g [W/kg]	0.502	0.506
Power Drift [dB]		0.02
TSL Correction	Positive only	Positive only
M2 / M1 [%]		50.8
Dist 3dB Peak [mm]		9.4



Test Date : 2024-02-28 | Ambient Temp : 22.6 °C | Tissue Temp : 22.2 °C

Test Mode

9_LTE Band 25_QPSK20M_Top Side_0mm_Ch26140_1RB_Offset0_Ant Main_Sample 1_INPAQ

Device Under Test Properties

Manufacturer or Brand	Model No. or Code Name	Sample No. or IMEI	DUT Type
ASUS	CR1204FG	S1NTLP00330018	Convertible PC

Exposure Conditions

Phantom Section	Band	Group, UID	Frequency [MHz], Channel Number	Conversion Factor	TSL Conductivity [S/m]	TSL Permittivity
Flat	Band 25	LTE-FDD, 10169 - CAF	1860.000, 26140	7.7	1.44	40.9

Hardware Setup

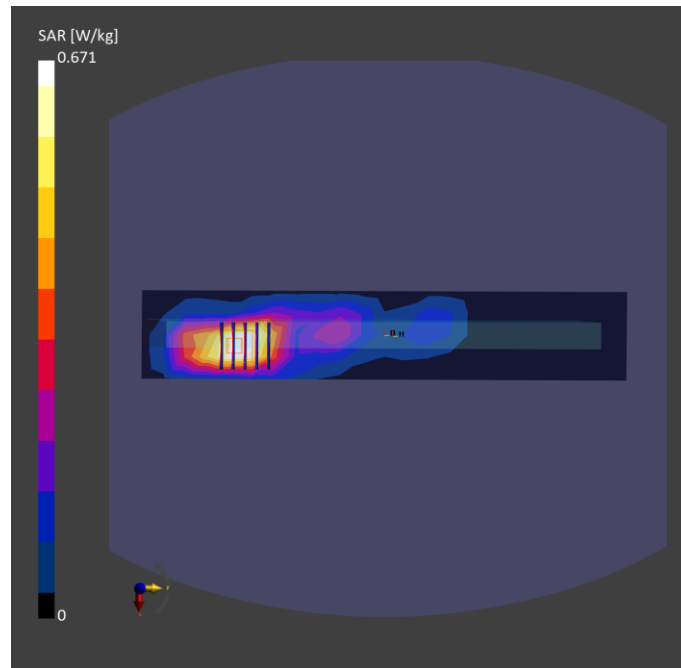
Phantom	Tissue Simulating Liquid	Probe Calibration Date	DAE Calibration Date
ELI V8.0 (20deg probe tilt) - 2141	HBBL-600-10000	EX3DV4 - SN7737 / 2023-06-05	DAE4 Sn1743 / 2023-08-17

Scan Setup

	Area Scan	Zoom Scan
Grid Extents [mm]	60.0 x 330.0	32.0 x 32.0 x 30.0
Grid Steps [mm]	15.0 x 15.0	8.0 x 8.0 x 5.0
Sensor Surface [mm]	3.0	1.4
Graded Grid	N/A	Yes
Grading Ratio	N/A	1.4

Measurement Results

	Area Scan	Zoom Scan
psSAR-1g [W/kg]	0.625	0.900
psSAR-10g [W/kg]	0.366	0.468
Power Drift [dB]		0.01
TSL Correction	Positive only	Positive only
M2 / M1 [%]		52.4
Dist 3dB Peak [mm]		8.8



Test Date : 2024-02-24 | Ambient Temp : 22.6 °C | Tissue Temp : 22.3 °C

Test Mode

10_LTE Band 26_QPSK15M_Top Side_0mm_Ch26765_1RB_Offset0_Ant Main_Sample 1_INPAQ

Device Under Test Properties

Manufacturer or Brand	Model No. or Code Name	Sample No. or IMEI	DUT Type
ASUS	CR1204FG	S1N7LTP00330018	Convertible PC

Exposure Conditions

Phantom Section	Band	Group, UID	Frequency [MHz], Channel Number	Conversion Factor	TSL Conductivity [S/m]	TSL Permittivity
Flat	Band 26	LTE-FDD, 10181 - CAF	821.500, 26765	9.12	0.948	44.0

Hardware Setup

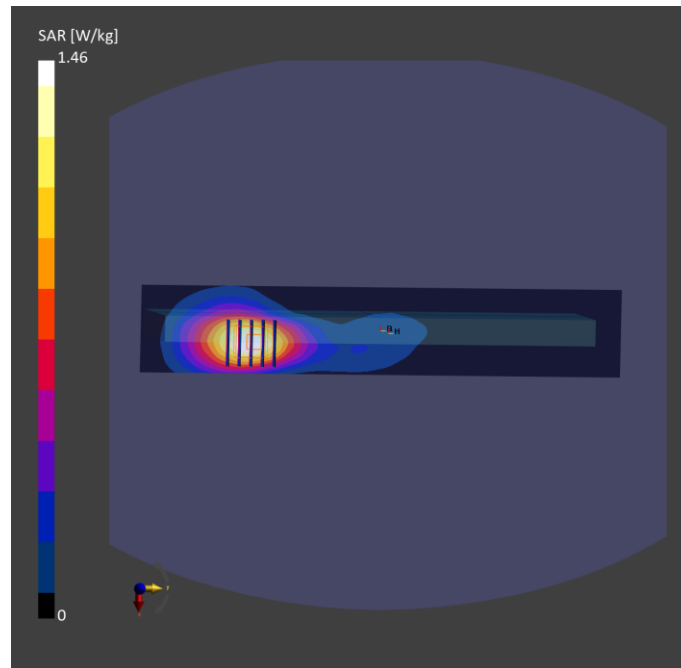
Phantom	Tissue Simulating Liquid	Probe Calibration Date	DAE Calibration Date
ELI V8.0 (20deg probe tilt) - 2141	HBBL-600-10000	EX3DV4 - SN7737 / 2023-06-05	DAE4 Sn1743 / 2023-08-17

Scan Setup

	Area Scan	Zoom Scan
Grid Extents [mm]	60.0 x 330.0	32.0 x 32.0 x 30.0
Grid Steps [mm]	15.0 x 15.0	8.0 x 8.0 x 5.0
Sensor Surface [mm]	3.0	1.4
Graded Grid	N/A	Yes
Grading Ratio	N/A	1.4

Measurement Results

	Area Scan	Zoom Scan
psSAR-1g [W/kg]	0.787	0.927
psSAR-10g [W/kg]	0.520	0.528
Power Drift [dB]		-0.02
TSL Correction	Positive only	Positive only
M2 / M1 [%]		50.5
Dist 3dB Peak [mm]		9.6



Test Date : 2024-02-26 | Ambient Temp : 22.7 °C | Tissue Temp : 22.2 °C

Test Mode

11_LTE Band 30_QPSK10M_Top Side_0mm_Ch27710_1RB_Offset0_Ant Main_Sample 1_INPAQ

Device Under Test Properties

Manufacturer or Brand	Model No. or Code Name	Sample No. or IMEI	DUT Type
ASUS	CR1204FG	S1N7737	Convertible PC

Exposure Conditions

Phantom Section	Band	Group, UID	Frequency [MHz], Channel Number	Conversion Factor	TSL Conductivity [S/m]	TSL Permittivity
Flat	Band 30	LTE-FDD, 10175 - CAH	2310.000, 27710	7.32	1.76	41.3

Hardware Setup

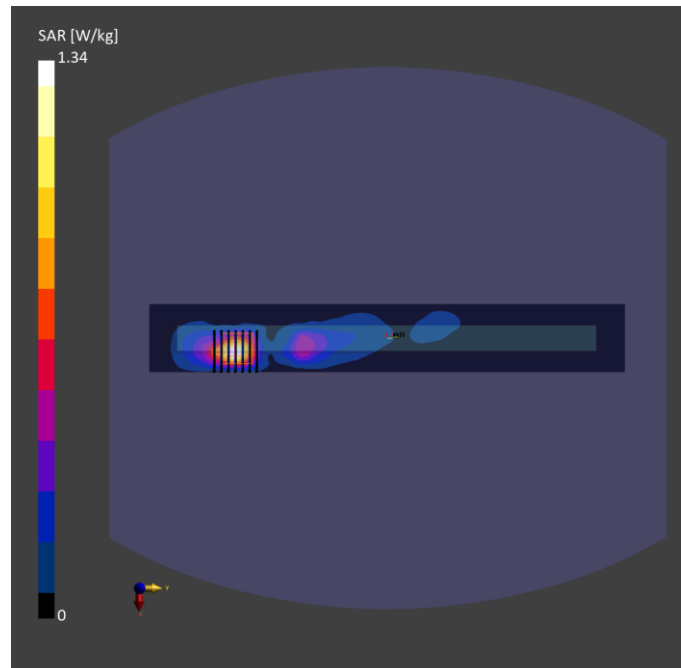
Phantom	Tissue Simulating Liquid	Probe Calibration Date	DAE Calibration Date
ELI V8.0 (20deg probe tilt) - 2141	HBBL-600-10000	EX3DV4 - SN7737 / 2023-06-05	DAE4 Sn1743 / 2023-08-17

Scan Setup

	Area Scan	Zoom Scan
Grid Extents [mm]	48.0 x 336.0	30.0 x 30.0 x 30.0
Grid Steps [mm]	12.0 x 12.0	5.0 x 5.0 x 5.0
Sensor Surface [mm]	3.0	1.4
Graded Grid	N/A	Yes
Grading Ratio	N/A	1.4

Measurement Results

	Area Scan	Zoom Scan
psSAR-1g [W/kg]	0.650	0.785
psSAR-10g [W/kg]	0.302	0.332
Power Drift [dB]		-0.04
TSL Correction	Positive only	Positive only
M2 / M1 [%]		48.5
Dist 3dB Peak [mm]		6.1



Test Date : 2024-02-25 | Ambient Temp : 22.3 °C | Tissue Temp : 21.9 °C

Test Mode

12_LTE Band 41_QPSK20M_Top Side_0mm_Ch40185_1RB_Offset0_Ant Main_Sample 1_INPAQ

Device Under Test Properties

Manufacturer or Brand	Model No. or Code Name	Sample No. or IMEI	DUT Type
ASUS	CR1204FG	S1NTP00330018	Convertible PC

Exposure Conditions

Phantom Section	Band	Group, UID	Frequency [MHz], Channel Number	Conversion Factor	TSL Conductivity [S/m]	TSL Permittivity
Flat	Band 41	LTE-TDD, 10172 - CAH	2549.500, 40185	7.17	1.94	41.1

Hardware Setup

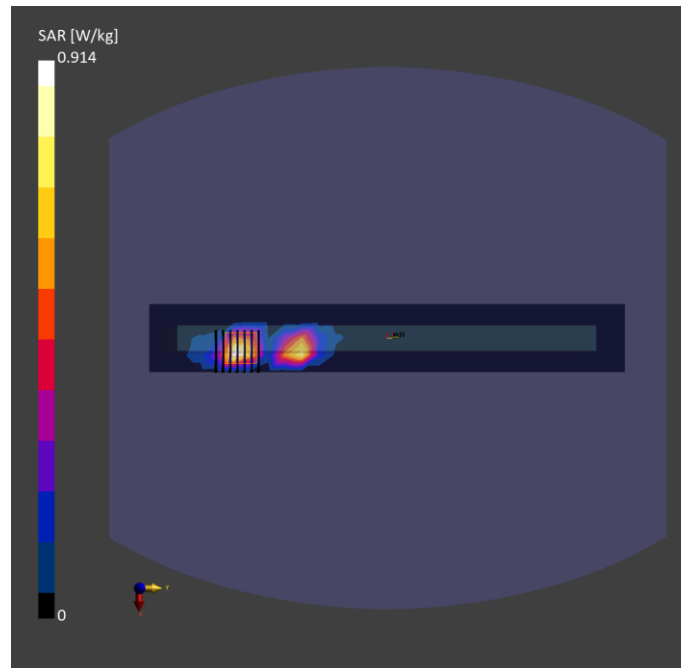
Phantom	Tissue Simulating Liquid	Probe Calibration Date	DAE Calibration Date
ELI V8.0 (20deg probe tilt) - 2141	HBBL-600-10000	EX3DV4 - SN7737 / 2023-06-05	DAE4 Sn1743 / 2023-08-17

Scan Setup

	Area Scan	Zoom Scan
Grid Extents [mm]	48.0 x 336.0	30.0 x 30.0 x 30.0
Grid Steps [mm]	12.0 x 12.0	5.0 x 5.0 x 5.0
Sensor Surface [mm]	3.0	1.4
Graded Grid	N/A	Yes
Grading Ratio	N/A	1.4

Measurement Results

	Area Scan	Zoom Scan
psSAR-1g [W/kg]	0.734	0.913
psSAR-10g [W/kg]	0.322	0.327
Power Drift [dB]		0.01
TSL Correction	Positive only	Positive only
M2 / M1 [%]		47.5
Dist 3dB Peak [mm]		6.0



Test Date : 2024-02-26 | Ambient Temp : 22.7 °C | Tissue Temp : 22.2 °C

Test Mode

13_LTE Band 48_QPSK20M_Top Side_0mm_Ch56640_1RB_Offset0_Ant Main_Sample 1_INPAQ

Device Under Test Properties

Manufacturer or Brand	Model No. or Code Name	Sample No. or IMEI	DUT Type
ASUS	CR1204FG	S1NTLP00330018	Convertible PC

Exposure Conditions

Phantom Section	Band	Group, UID	Frequency [MHz], Channel Number	Conversion Factor	TSL Conductivity [S/m]	TSL Permittivity
Flat	Band 48	LTE-TDD, 10172 - CAH	3690.000, 56640	6.8	2.83	39.4

Hardware Setup

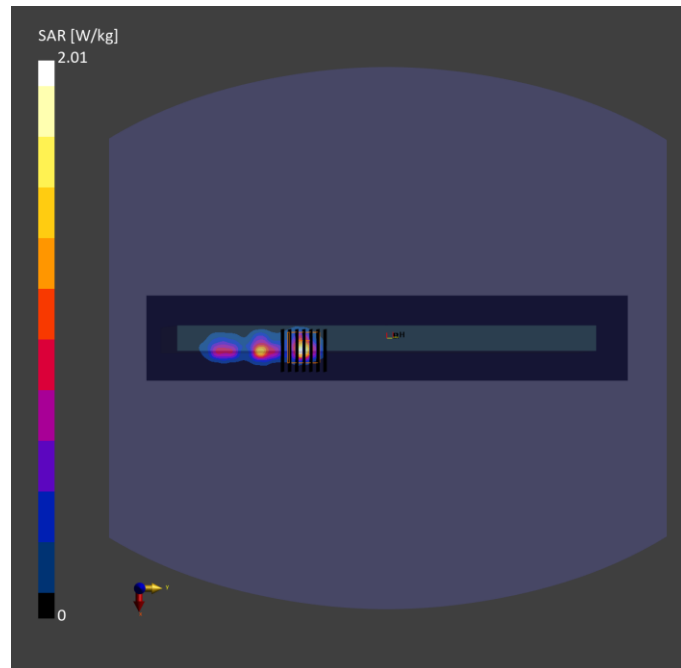
Phantom	Tissue Simulating Liquid	Probe Calibration Date	DAE Calibration Date
ELI V8.0 (20deg probe tilt) - 2141	HBBL-600-10000	EX3DV4 - SN7737 / 2023-06-05	DAE4 Sn1743 / 2023-08-17

Scan Setup

	Area Scan	Zoom Scan
Grid Extents [mm]	60.0 x 340.0	30.0 x 30.0 x 28.0
Grid Steps [mm]	10.0 x 10.0	5.0 x 5.0 x 2.5
Sensor Surface [mm]	3.0	1.4
Graded Grid	N/A	Yes
Grading Ratio	N/A	1.4

Measurement Results

	Area Scan	Zoom Scan
psSAR-1g [W/kg]	0.781	0.996
psSAR-10g [W/kg]	0.226	0.261
Power Drift [dB]		0.01
TSL Correction	Positive only	Positive only
M2 / M1 [%]		56.6
Dist 3dB Peak [mm]		5.9



Test Date : 2024-02-23 | Ambient Temp : 22.4 °C | Tissue Temp : 22.1 °C

Test Mode

14_LTE Band 66_QPSK20M_Top Side_0mm_Ch132322_1RB_Offset0_Ant Main_Sample 1_INPAQ

Device Under Test Properties

Manufacturer or Brand	Model No. or Code Name	Sample No. or IMEI	DUT Type
ASUS	CR1204FG	S1N7LTP00330018	Convertible PC

Exposure Conditions

Phantom Section	Band	Group, UID	Frequency [MHz], Channel Number	Conversion Factor	TSL Conductivity [S/m]	TSL Permittivity
Flat	Band 66	LTE-FDD, 10169 - CAF	1745.000, 132322	8.03	1.35	41.8

Hardware Setup

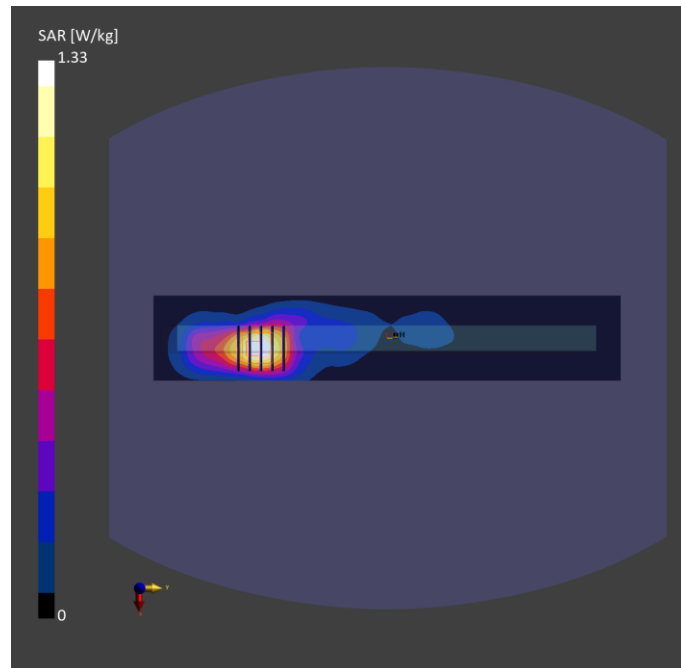
Phantom	Tissue Simulating Liquid	Probe Calibration Date	DAE Calibration Date
ELI V8.0 (20deg probe tilt) - 2141	HBBL-600-10000	EX3DV4 - SN7737 / 2023-06-05	DAE4 Sn1743 / 2023-08-17

Scan Setup

	Area Scan	Zoom Scan
Grid Extents [mm]	60.0 x 330.0	32.0 x 32.0 x 30.0
Grid Steps [mm]	15.0 x 15.0	8.0 x 8.0 x 5.0
Sensor Surface [mm]	3.0	1.4
Graded Grid	N/A	Yes
Grading Ratio	N/A	1.4

Measurement Results

	Area Scan	Zoom Scan
psSAR-1g [W/kg]	0.747	0.861
psSAR-10g [W/kg]	0.434	0.471
Power Drift [dB]		0.02
TSL Correction	Positive only	Positive only
M2 / M1 [%]		53.5
Dist 3dB Peak [mm]		9.8



Test Date : 2024-02-29 | Ambient Temp : 22.6 °C | Tissue Temp : 22.4 °C

Test Mode

15_LTE Band 71_QPSK20M_Top Side_0mm_Ch133372_1RB_Offset0_Ant Main_Sample 1_INPAQ

Device Under Test Properties

Manufacturer or Brand	Model No. or Code Name	Sample No. or IMEI	DUT Type
ASUS	CR1204FG	S1NTLP00330018	Convertible PC

Exposure Conditions

Phantom Section	Band	Group, UID	Frequency [MHz], Channel Number	Conversion Factor	TSL Conductivity [S/m]	TSL Permittivity
Flat	Band 71	LTE-FDD, 10169 - CAF	688.000, 133372	9.22	0.890	42.7

Hardware Setup

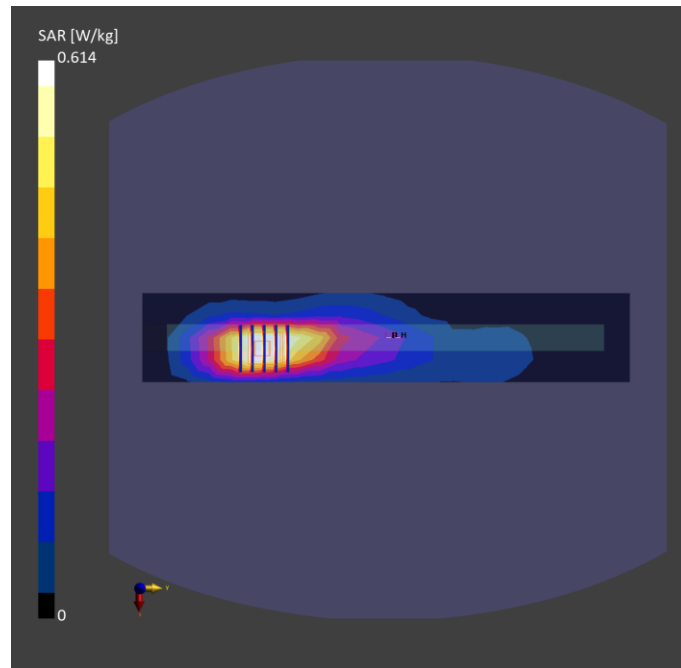
Phantom	Tissue Simulating Liquid	Probe Calibration Date	DAE Calibration Date
ELI V8.0 (20deg probe tilt) - 2141	HBBL-600-10000	EX3DV4 - SN7737 / 2023-06-05	DAE4 Sn1743 / 2023-08-17

Scan Setup

	Area Scan	Zoom Scan
Grid Extents [mm]	60.0 x 330.0	32.0 x 32.0 x 30.0
Grid Steps [mm]	15.0 x 15.0	8.0 x 8.0 x 5.0
Sensor Surface [mm]	3.0	1.4
Graded Grid	N/A	Yes
Grading Ratio	N/A	1.4

Measurement Results

	Area Scan	Zoom Scan
psSAR-1g [W/kg]	0.614	0.754
psSAR-10g [W/kg]	0.406	0.418
Power Drift [dB]		0.01
TSL Correction	Positive only	Positive only
M2 / M1 [%]		59.8
Dist 3dB Peak [mm]		9.6



Test Date : 2024-03-01 | Ambient Temp : 22.8 °C | Tissue Temp : 22.3 °C

Test Mode

16_WLAN 2.4GHz_802.11b_Front Side of laptop_0mm_Ch6_Ant 1_Sample 1_INPAQ

Device Under Test Properties

Manufacturer or Brand	Model No. or Code Name	Sample No. or IMEI	DUT Type
ASUS	CR1204FG	S1NTLP00330018	Convertible PC

Exposure Conditions

Phantom Section	Band	Group, UID	Frequency [MHz], Channel Number	Conversion Factor	TSL Conductivity [S/m]	TSL Permittivity
Flat	WLAN 2.4GHz	WLAN, 10012 - CAB	2437.000, 6	7.05	1.81	40.2

Hardware Setup

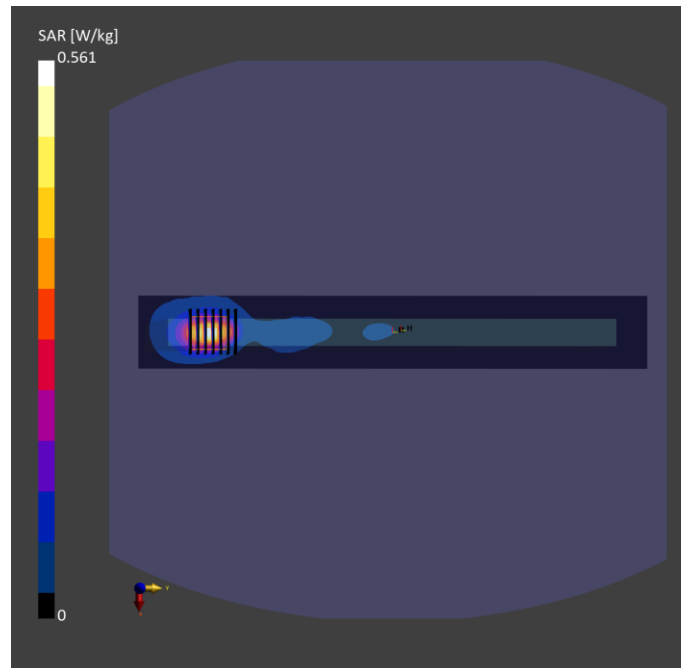
Phantom	Tissue Simulating Liquid	Probe Calibration Date	DAE Calibration Date
ELI V8.0 (20deg probe tilt) - 2141	HBBL-600-10000	EX3DV4 - SN7737 / 2023-06-05	DAE4 Sn1743 / 2023-08-17

Scan Setup

	Area Scan	Zoom Scan
Grid Extents [mm]	48.0 x 336.0	30.0 x 30.0 x 30.0
Grid Steps [mm]	12.0 x 12.0	5.0 x 5.0 x 5.0
Sensor Surface [mm]	3.0	1.4
Graded Grid	N/A	Yes
Grading Ratio	N/A	1.4

Measurement Results

	Area Scan	Zoom Scan
psSAR-1g [W/kg]	0.515	0.941
psSAR-10g [W/kg]	0.235	0.345
Power Drift [dB]		0.04
TSL Correction	Positive only	Positive only
M2 / M1 [%]		54.2
Dist 3dB Peak [mm]		7.0



Test Date : 2024-03-01 | Ambient Temp : 22.8 °C | Tissue Temp : 22.3 °C

Test Mode

17_Bluetooth_LE_Front Side of laptop_0mm_Ch19_Ant 1_Sample 1_INPAQ

Device Under Test Properties

Manufacturer or Brand	Model No. or Code Name	Sample No. or IMEI	DUT Type
ASUS	CR1204FG	S1NTP00330018	Convertible PC

Exposure Conditions

Phantom Section	Band	Group, UID	Frequency [MHz], Channel Number	Conversion Factor	TSL Conductivity [S/m]	TSL Permittivity
Flat	ISM 2.4 GHz Band	Bluetooth, 10670 - AAA	2440.000, 19	7.05	1.82	40.2

Hardware Setup

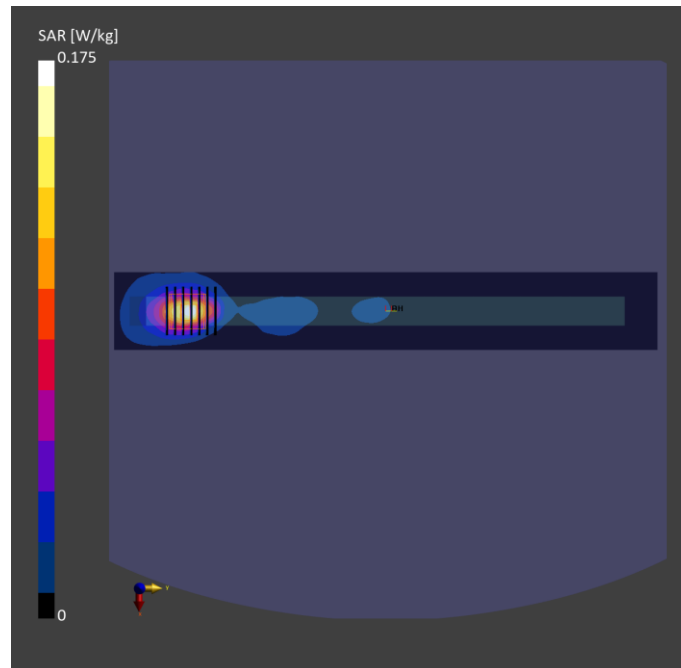
Phantom	Tissue Simulating Liquid	Probe Calibration Date	DAE Calibration Date
ELI V8.0 (20deg probe tilt) - 2141	HBBL-600-10000	EX3DV4 - SN7737 / 2023-06-05	DAE4 Sn1743 / 2023-08-17

Scan Setup

	Area Scan	Zoom Scan
Grid Extents [mm]	48.0 x 336.0	30.0 x 30.0 x 30.0
Grid Steps [mm]	12.0 x 12.0	5.0 x 5.0 x 5.0
Sensor Surface [mm]	3.0	1.4
Graded Grid	N/A	Yes
Grading Ratio	N/A	1.4

Measurement Results

	Area Scan	Zoom Scan
psSAR-1g [W/kg]	0.095	0.101
psSAR-10g [W/kg]	0.042	0.045
Power Drift [dB]		0.08
TSL Correction	Positive only	Positive only
M2 / M1 [%]		44.5
Dist 3dB Peak [mm]		7.7



Test Date : 2024-03-02 | Ambient Temp : 22.5 °C | Tissue Temp : 22.0 °C

Test Mode

18_WLAN 5GHz_802.11ac VHT80_Front Side of laptop_0mm_Ch58_Ant 0+1_Sample 1_INPAQ

Device Under Test Properties

Manufacturer or Brand	Model No. or Code Name	Sample No. or IMEI	DUT Type
ASUS	CR1204FG	S1N7LTP00330018	Convertible PC

Exposure Conditions

Phantom Section	Band	Group, UID	Frequency [MHz], Channel Number	Conversion Factor	TSL Conductivity [S/m]	TSL Permittivity
Flat	WLAN 5GHz	WLAN, 10544 - AAC	5290.000, 58	5.58	4.62	35.9

Hardware Setup

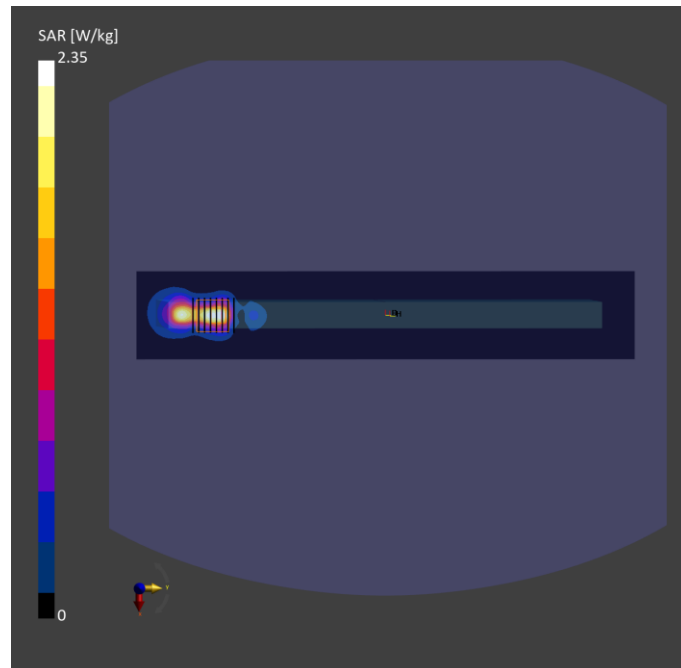
Phantom	Tissue Simulating Liquid	Probe Calibration Date	DAE Calibration Date
ELI V8.0 (20deg probe tilt) - 2141	HBBL-600-10000	EX3DV4 - SN7737 / 2023-06-05	DAE4 Sn1743 / 2023-08-17

Scan Setup

	Area Scan	Zoom Scan
Grid Extents [mm]	60.0 x 340.0	24.0 x 24.0 x 22.0
Grid Steps [mm]	10.0 x 10.0	4.0 x 4.0 x 1.4
Sensor Surface [mm]	3.0	1.4
Graded Grid	N/A	Yes
Grading Ratio	N/A	1.4

Measurement Results

	Area Scan	Zoom Scan
psSAR-1g [W/kg]	0.730	0.913
psSAR-10g [W/kg]	0.232	0.259
Power Drift [dB]		-0.02
TSL Correction	Positive only	Positive only
M2 / M1 [%]		62.4
Dist 3dB Peak [mm]		6.4



Test Date : 2024-03-03 | Ambient Temp : 22.5 °C | Tissue Temp : 22.1 °C

Test Mode

19_WLAN 5GHz_802.11ac VHT80_Front Side of laptop_0mm_Ch106_Ant 0+1_Sample 1_INPAQ

Device Under Test Properties

Manufacturer or Brand	Model No. or Code Name	Sample No. or IMEI	DUT Type
ASUS	CR1204FG	S1N7LTP00330018	Convertible PC

Exposure Conditions

Phantom Section	Band	Group, UID	Frequency [MHz], Channel Number	Conversion Factor	TSL Conductivity [S/m]	TSL Permittivity
Flat	WLAN 5GHz	WLAN, 10544 - AAC	5530.000, 106	4.83	4.81	36.7

Hardware Setup

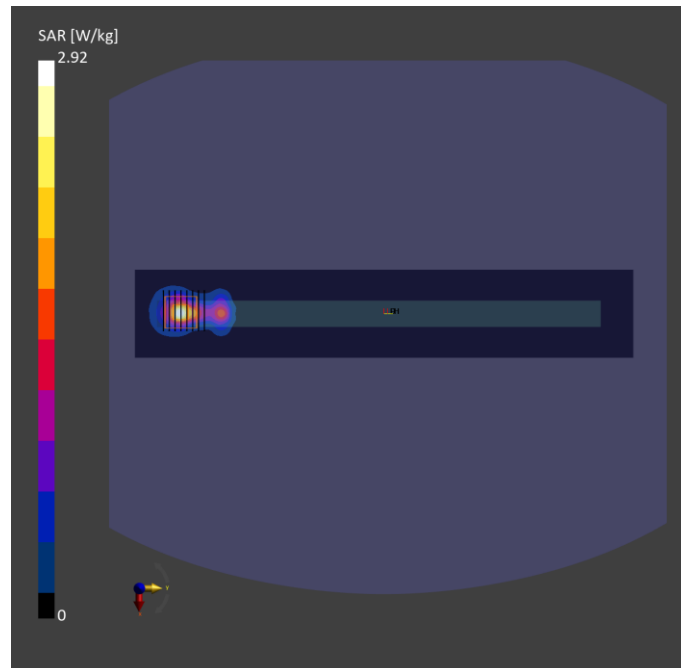
Phantom	Tissue Simulating Liquid	Probe Calibration Date	DAE Calibration Date
ELI V8.0 (20deg probe tilt) - 2141	HBBL-600-10000	EX3DV4 - SN7737 / 2023-06-05	DAE4 Sn1743 / 2023-08-17

Scan Setup

	Area Scan	Zoom Scan
Grid Extents [mm]	60.0 x 340.0	24.0 x 24.0 x 22.0
Grid Steps [mm]	10.0 x 10.0	4.0 x 4.0 x 1.4
Sensor Surface [mm]	3.0	1.4
Graded Grid	N/A	Yes
Grading Ratio	N/A	1.4

Measurement Results

	Area Scan	Zoom Scan
psSAR-1g [W/kg]	0.958	0.904
psSAR-10g [W/kg]	0.285	0.224
Power Drift [dB]		0.08
TSL Correction	Positive only	Positive only
M2 / M1 [%]		61.1
Dist 3dB Peak [mm]		6.9



Test Date : 2024-03-04 | Ambient Temp : 22.4 °C | Tissue Temp : 21.8 °C

Test Mode

20_WLAN 5GHz_802.11ac VHT80_Front Side of laptop_0mm_Ch155_Ant 0+1_Sample 1_INPAQ

Device Under Test Properties

Manufacturer or Brand	Model No. or Code Name	Sample No. or IMEI	DUT Type
ASUS	CR1204FG	S1NTLP00330018	Convertible PC

Exposure Conditions

Phantom Section	Band	Group, UID	Frequency [MHz], Channel Number	Conversion Factor	TSL Conductivity [S/m]	TSL Permittivity
Flat	WLAN 5GHz	WLAN, 10544 - AAC	5775.000, 155	4.9	4.95	37.9

Hardware Setup

Phantom	Tissue Simulating Liquid	Probe Calibration Date	DAE Calibration Date
ELI V8.0 (20deg probe tilt) - 2141	HBBL-600-10000	EX3DV4 - SN7737 / 2023-06-05	DAE4 Sn1743 / 2023-08-17

Scan Setup

	Area Scan	Zoom Scan
Grid Extents [mm]	60.0 x 340.0	24.0 x 24.0 x 22.0
Grid Steps [mm]	10.0 x 10.0	4.0 x 4.0 x 1.4
Sensor Surface [mm]	3.0	1.4
Graded Grid	N/A	Yes
Grading Ratio	N/A	1.4

Measurement Results

	Area Scan	Zoom Scan
psSAR-1g [W/kg]	0.876	0.948
psSAR-10g [W/kg]	0.233	0.256
Power Drift [dB]		0.06
TSL Correction	Positive only	Positive only
M2 / M1 [%]		58.3
Dist 3dB Peak [mm]		7.3

