

## **Appendix B – System Check Plots**

Test Date : 2024-02-27 | Ambient Temp : 22.5 °C | Tissue Temp : 22.1 °C

**System Performance Check**

**System Performance Check\_H750**

**Verification Source Properties**

Manufacturer	Model No.	Serial No.	Input Power [dBm]
SPEAG	D750	1222	17.0

**Exposure Conditions**

Phantom Section	Group	Frequency [MHz]	Conversion Factor	TSL Conductivity [S/m]	TSL Permittivity
Flat	CW	750.000	9.22	0.855	43.8

**Hardware Setup**

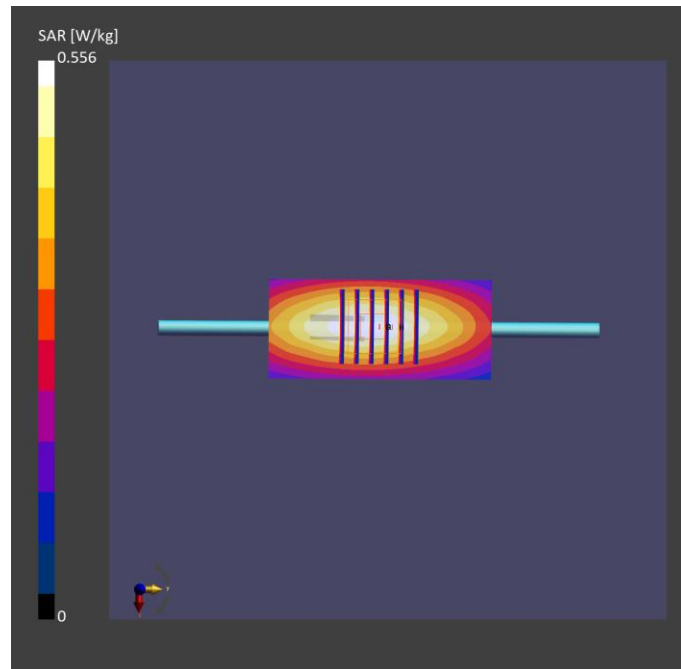
Phantom	Tissue Simulating Liquid	Probe   Calibration Date	DAE   Calibration Date
ELI V8.0 (20deg probe tilt) - 2141	HBBL-600-10000	EX3DV4 - SN7737 / 2023-06-05	DAE4 Sn1743 / 2023-08-17

**Scan Setup**

	Area Scan	Zoom Scan
Grid Extents [mm]	40.0 x 90.0	30.0 x 30.0 x 30.0
Grid Steps [mm]	10.0 x 15.0	6.0 x 6.0 x 1.5
Sensor Surface [mm]	3.0	1.4
Graded Grid	N/A	Yes
Grading Ratio	N/A	1.5

**Measurement Results**

	Area Scan	Zoom Scan
psSAR-1g [W/kg]	0.446	<b>0.435</b>
psSAR-10g [W/kg]	0.297	<b>0.287</b>
Power Drift [dB]		0.08
TSL Correction	Positive only	Positive only



Test Date : 2024-02-29 | Ambient Temp : 22.6 °C | Tissue Temp : 22.4 °C

**System Performance Check**

**System Performance Check\_H750**

**Verification Source Properties**

Manufacturer	Model No.	Serial No.	Input Power [dBm]
SPEAG	D750	1222	17.0

**Exposure Conditions**

Phantom Section	Group	Frequency [MHz]	Conversion Factor	TSL Conductivity [S/m]	TSL Permittivity
Flat	CW	750.000	9.22	0.913	42.5

**Hardware Setup**

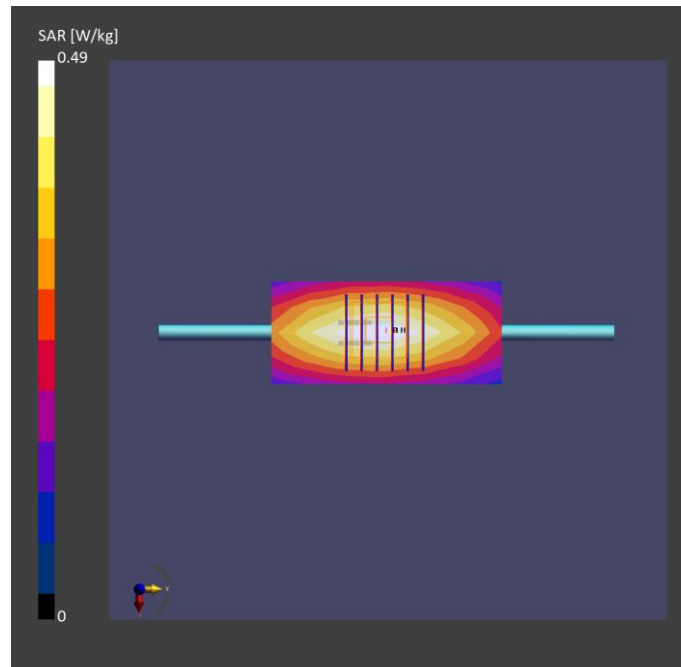
Phantom	Tissue Simulating Liquid	Probe   Calibration Date	DAE   Calibration Date
ELI V8.0 (20deg probe tilt) - 2141	HBBL-600-10000	EX3DV4 - SN7737 / 2023-06-05	DAE4 Sn1743 / 2023-08-17

**Scan Setup**

	Area Scan	Zoom Scan
Grid Extents [mm]	40.0 x 90.0	30.0 x 30.0 x 30.0
Grid Steps [mm]	10.0 x 15.0	6.0 x 6.0 x 1.5
Sensor Surface [mm]	3.0	1.4
Graded Grid	N/A	Yes
Grading Ratio	N/A	1.5

**Measurement Results**

	Area Scan	Zoom Scan
psSAR-1g [W/kg]	0.426	<b>0.423</b>
psSAR-10g [W/kg]	0.284	<b>0.282</b>
Power Drift [dB]		0.01
TSL Correction	Positive only	Positive only



Test Date : 2024-02-24 | Ambient Temp : 22.6 °C | Tissue Temp : 22.3 °C

**System Performance Check**

**System Performance Check\_H835**

**Verification Source Properties**

Manufacturer	Model No.	Serial No.	Input Power [dBm]
SPEAG	D835	4d291	17.0

**Exposure Conditions**

Phantom Section	Group	Frequency [MHz]	Conversion Factor	TSL Conductivity [S/m]	TSL Permittivity
Flat	CW	835.000	9.12	0.954	43.9

**Hardware Setup**

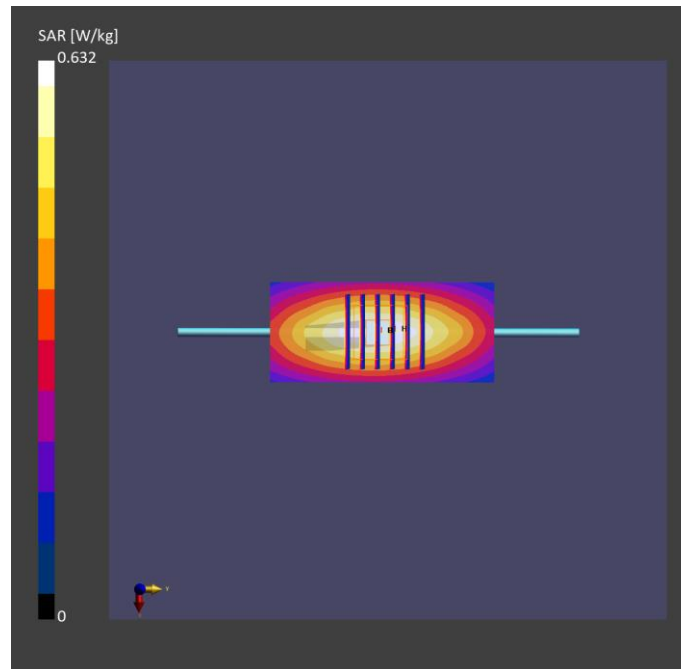
Phantom	Tissue Simulating Liquid	Probe   Calibration Date	DAE   Calibration Date
ELI V8.0 (20deg probe tilt) - 2141	HBBL-600-10000	EX3DV4 - SN7737 / 2023-06-05	DAE4 Sn1743 / 2023-08-17

**Scan Setup**

	Area Scan	Zoom Scan
Grid Extents [mm]	40.0 x 90.0	30.0 x 30.0 x 30.0
Grid Steps [mm]	10.0 x 15.0	6.0 x 6.0 x 1.5
Sensor Surface [mm]	3.0	1.4
Graded Grid	N/A	Yes
Grading Ratio	N/A	1.5

**Measurement Results**

	Area Scan	Zoom Scan
psSAR-1g [W/kg]	0.495	<b>0.493</b>
psSAR-10g [W/kg]	0.325	<b>0.324</b>
Power Drift [dB]		0.02
TSL Correction	Positive only	Positive only



Test Date : 2024-02-23 | Ambient Temp : 22.4 °C | Tissue Temp : 22.1 °C

**System Performance Check**

**System Performance Check\_H1800**

**Verification Source Properties**

Manufacturer	Model No.	Serial No.	Input Power [dBm]
SPEAG	D1800	2d167	17.0

**Exposure Conditions**

Phantom Section	Group	Frequency [MHz]	Conversion Factor	TSL Conductivity [S/m]	TSL Permittivity
Flat	CW	1800.000	8.03	1.35	41.8

**Hardware Setup**

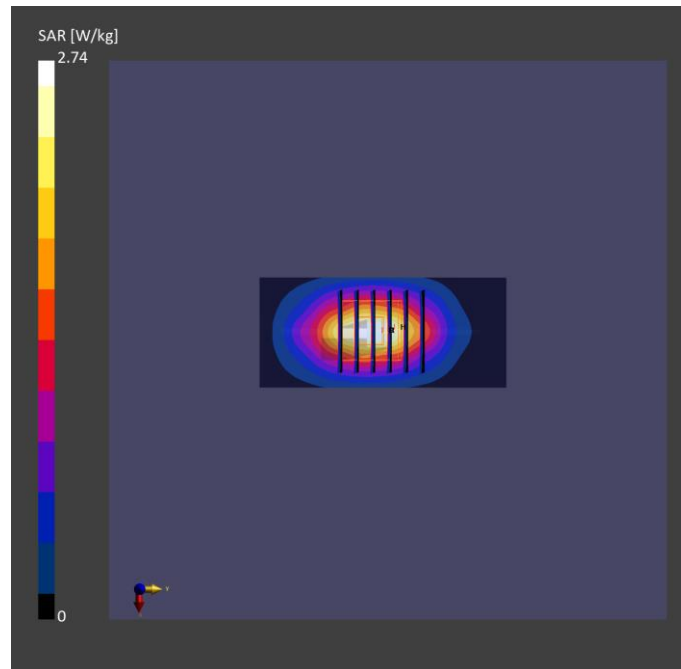
Phantom	Tissue Simulating Liquid	Probe   Calibration Date	DAE   Calibration Date
ELI V8.0 (20deg probe tilt) - 2141	HBBL-600-10000	EX3DV4 - SN7737 / 2023-06-05	DAE4 Sn1743 / 2023-08-17

**Scan Setup**

	Area Scan	Zoom Scan
Grid Extents [mm]	40.0 x 90.0	30.0 x 30.0 x 30.0
Grid Steps [mm]	10.0 x 15.0	6.0 x 6.0 x 1.5
Sensor Surface [mm]	3.0	1.4
Graded Grid	N/A	Yes
Grading Ratio	N/A	1.5

**Measurement Results**

	Area Scan	Zoom Scan
psSAR-1g [W/kg]	1.89	<b>1.89</b>
psSAR-10g [W/kg]	0.989	<b>0.994</b>
Power Drift [dB]		0.00
TSL Correction	Positive only	Positive only



Test Date : 2024-02-28 | Ambient Temp : 22.6 °C | Tissue Temp : 22.2 °C

**System Performance Check**

**System Performance Check\_H1900**

**Verification Source Properties**

Manufacturer	Model No.	Serial No.	Input Power [dBm]
SPEAG	D1900	5d111	17.0

**Exposure Conditions**

Phantom Section	Group	Frequency [MHz]	Conversion Factor	TSL Conductivity [S/m]	TSL Permittivity
Flat	CW	1900.000	7.7	1.46	40.8

**Hardware Setup**

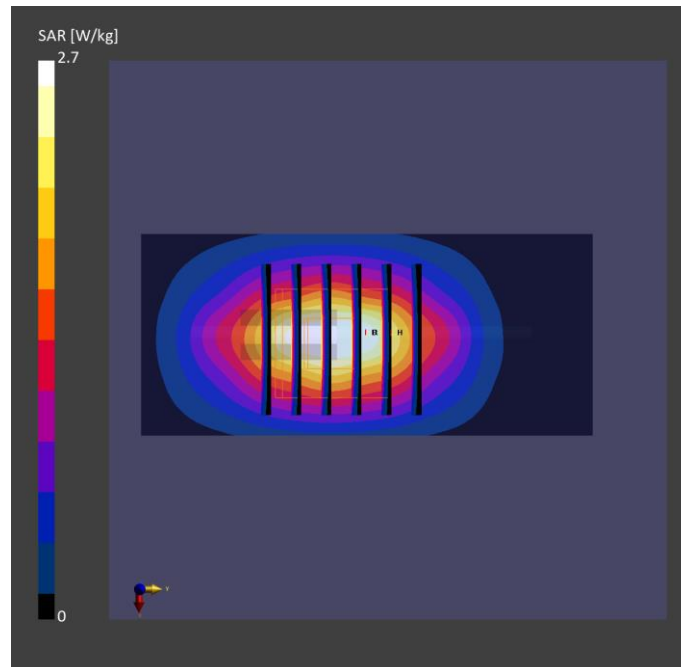
Phantom	Tissue Simulating Liquid	Probe   Calibration Date	DAE   Calibration Date
ELI V8.0 (20deg probe tilt) - 2141	HBBL-600-10000	EX3DV4 - SN7737 / 2023-06-05	DAE4 Sn1743 / 2023-08-17

**Scan Setup**

	Area Scan	Zoom Scan
Grid Extents [mm]	40.0 x 90.0	30.0 x 30.0 x 30.0
Grid Steps [mm]	10.0 x 15.0	6.0 x 6.0 x 1.5
Sensor Surface [mm]	3.0	1.4
Graded Grid	N/A	Yes
Grading Ratio	N/A	1.5

**Measurement Results**

	Area Scan	Zoom Scan
psSAR-1g [W/kg]	1.84	<b>1.83</b>
psSAR-10g [W/kg]	0.959	<b>0.958</b>
Power Drift [dB]		0.02
TSL Correction	Positive only	Positive only



Test Date : 2024-02-26 | Ambient Temp : 22.7 °C | Tissue Temp : 22.2 °C

**System Performance Check**

**System Performance Check\_H2300**

**Verification Source Properties**

Manufacturer	Model No.	Serial No.	Input Power [dBm]
SPEAG	D2300	1005	17.0

**Exposure Conditions**

Phantom Section	Group	Frequency [MHz]	Conversion Factor	TSL Conductivity [S/m]	TSL Permittivity
Flat	CW	2300.000	7.32	1.76	41.3

**Hardware Setup**

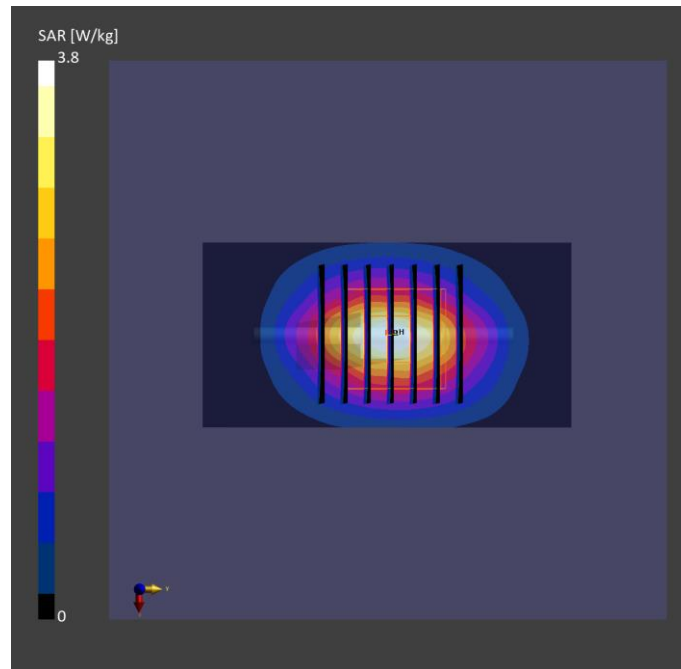
Phantom	Tissue Simulating Liquid	Probe   Calibration Date	DAE   Calibration Date
ELI V8.0 (20deg probe tilt) - 2141	HBBL-600-10000	EX3DV4 - SN7737 / 2023-06-05	DAE4 Sn1743 / 2023-08-17

**Scan Setup**

	Area Scan	Zoom Scan
Grid Extents [mm]	40.0 x 80.0	30.0 x 30.0 x 30.0
Grid Steps [mm]	10.0 x 10.0	5.0 x 5.0 x 1.5
Sensor Surface [mm]	3.0	1.4
Graded Grid	N/A	Yes
Grading Ratio	N/A	1.5

**Measurement Results**

	Area Scan	Zoom Scan
psSAR-1g [W/kg]	2.37	<b>2.38</b>
psSAR-10g [W/kg]	1.13	<b>1.15</b>
Power Drift [dB]		0.01
TSL Correction	Positive only	Positive only



Test Date : 2024-03-01 | Ambient Temp : 22.8 °C | Tissue Temp : 22.3 °C

**System Performance Check**

**System Performance Check\_H2450**

**Verification Source Properties**

Manufacturer	Model No.	Serial No.	Input Power [dBm]
SPEAG	D2450	1087	17.0

**Exposure Conditions**

Phantom Section	Group	Frequency [MHz]	Conversion Factor	TSL Conductivity [S/m]	TSL Permittivity
Flat	CW	2450.000	7.05	1.82	40.2

**Hardware Setup**

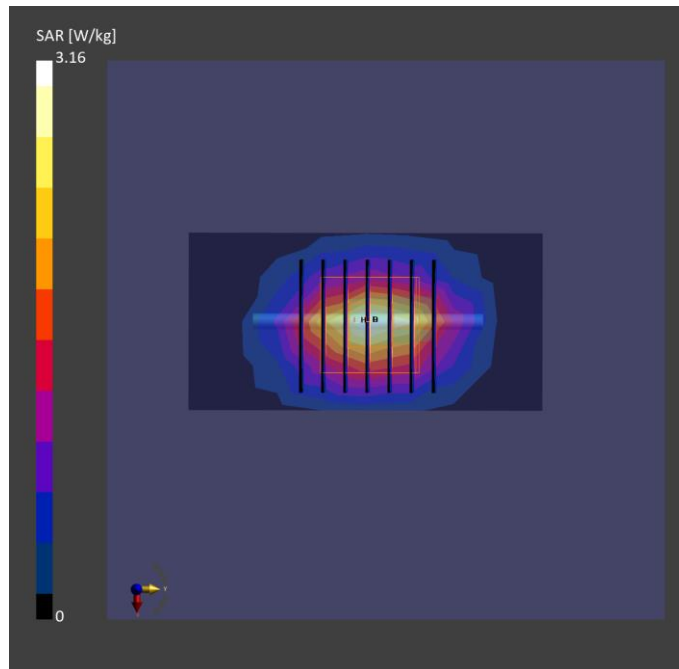
Phantom	Tissue Simulating Liquid	Probe   Calibration Date	DAE   Calibration Date
ELI V8.0 (20deg probe tilt) - 2141	HBBL-600-10000	EX3DV4 - SN7737 / 2023-06-05	DAE4 Sn1743 / 2023-08-17

**Scan Setup**

	Area Scan	Zoom Scan
Grid Extents [mm]	40.0 x 80.0	30.0 x 30.0 x 30.0
Grid Steps [mm]	10.0 x 10.0	5.0 x 5.0 x 1.5
Sensor Surface [mm]	3.0	1.4
Graded Grid	N/A	Yes
Grading Ratio	N/A	1.5

**Measurement Results**

	Area Scan	Zoom Scan
psSAR-1g [W/kg]	2.53	<b>2.41</b>
psSAR-10g [W/kg]	1.17	<b>1.12</b>
Power Drift [dB]		0.02
TSL Correction	Positive only	Positive only





Test Date : 2024-02-25 | Ambient Temp : 22.3 °C | Tissue Temp : 21.9 °C

**System Performance Check**

**System Performance Check\_H2600**

**Verification Source Properties**

Manufacturer	Model No.	Serial No.	Input Power [dBm]
SPEAG	D2600	1197	17.0

**Exposure Conditions**

Phantom Section	Group	Frequency [MHz]	Conversion Factor	TSL Conductivity [S/m]	TSL Permittivity
Flat	CW	2600.000	7.17	2.0	41.0

**Hardware Setup**

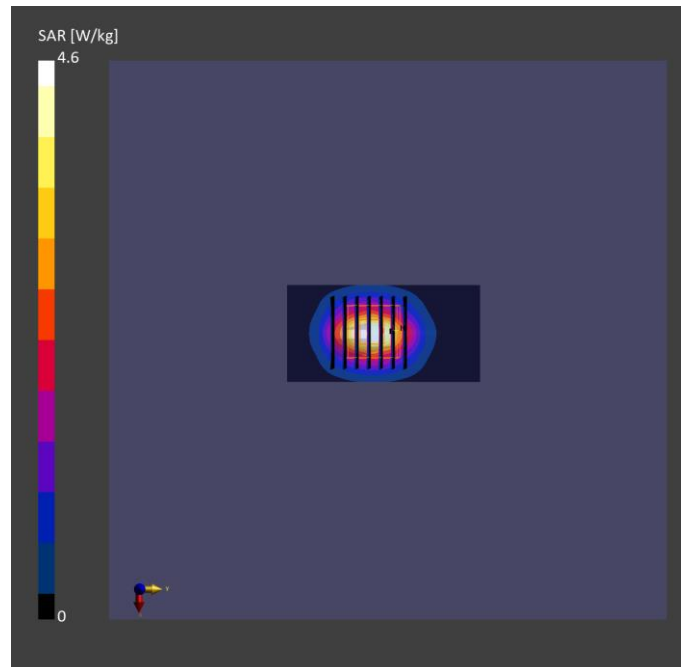
Phantom	Tissue Simulating Liquid	Probe   Calibration Date	DAE   Calibration Date
ELI V8.0 (20deg probe tilt) - 2141	HBBL-600-10000	EX3DV4 - SN7737 / 2023-06-05	DAE4 Sn1743 / 2023-08-17

**Scan Setup**

	Area Scan	Zoom Scan
Grid Extents [mm]	40.0 x 80.0	30.0 x 30.0 x 30.0
Grid Steps [mm]	10.0 x 10.0	5.0 x 5.0 x 1.5
Sensor Surface [mm]	3.0	1.4
Graded Grid	N/A	Yes
Grading Ratio	N/A	1.5

**Measurement Results**

	Area Scan	Zoom Scan
psSAR-1g [W/kg]	2.75	<b>2.75</b>
psSAR-10g [W/kg]	1.22	<b>1.23</b>
Power Drift [dB]		0.00
TSL Correction	Positive only	Positive only



Test Date : 2024-02-26 | Ambient Temp : 22.7 °C | Tissue Temp : 22.2 °C

**System Performance Check**

**System Performance Check\_H3500**

**Verification Source Properties**

Manufacturer	Model No.	Serial No.	Input Power [dBm]
SPEAG	D3500	1013	17.0

**Exposure Conditions**

Phantom Section	Group	Frequency [MHz]	Conversion Factor	TSL Conductivity [S/m]	TSL Permittivity
Flat	CW	3500.000	6.87	2.69	39.6

**Hardware Setup**

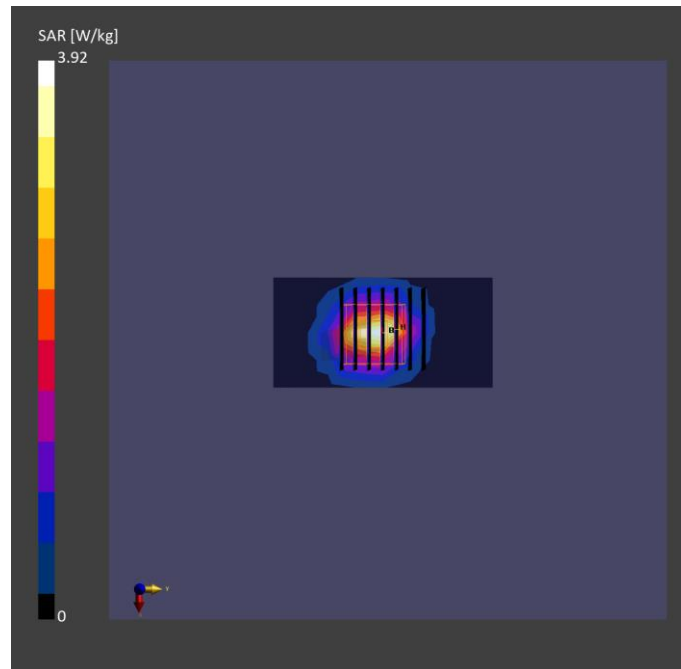
Phantom	Tissue Simulating Liquid	Probe   Calibration Date	DAE   Calibration Date
ELI V8.0 (20deg probe tilt) - 2141	HBBL-600-10000	EX3DV4 - SN7737 / 2023-06-05	DAE4 Sn1743 / 2023-08-17

**Scan Setup**

	Area Scan	Zoom Scan
Grid Extents [mm]	40.0 x 80.0	28.0 x 28.0 x 28.0
Grid Steps [mm]	10.0 x 10.0	5.0 x 5.0 x 1.4
Sensor Surface [mm]	3.0	1.4
Graded Grid	N/A	Yes
Grading Ratio	N/A	1.5

**Measurement Results**

	Area Scan	Zoom Scan
psSAR-1g [W/kg]	2.95	<b>2.98</b>
psSAR-10g [W/kg]	1.11	<b>1.14</b>
Power Drift [dB]		0.01
TSL Correction	Positive only	Positive only



Test Date : 2024-02-26 | Ambient Temp : 22.7 °C | Tissue Temp : 22.2 °C

**System Performance Check**

**System Performance Check\_H3700**

**Verification Source Properties**

Manufacturer	Model No.	Serial No.	Input Power [dBm]
SPEAG	D3700	1034	17.0

**Exposure Conditions**

Phantom Section	Group	Frequency [MHz]	Conversion Factor	TSL Conductivity [S/m]	TSL Permittivity
Flat	CW	3700.000	6.8	2.84	39.4

**Hardware Setup**

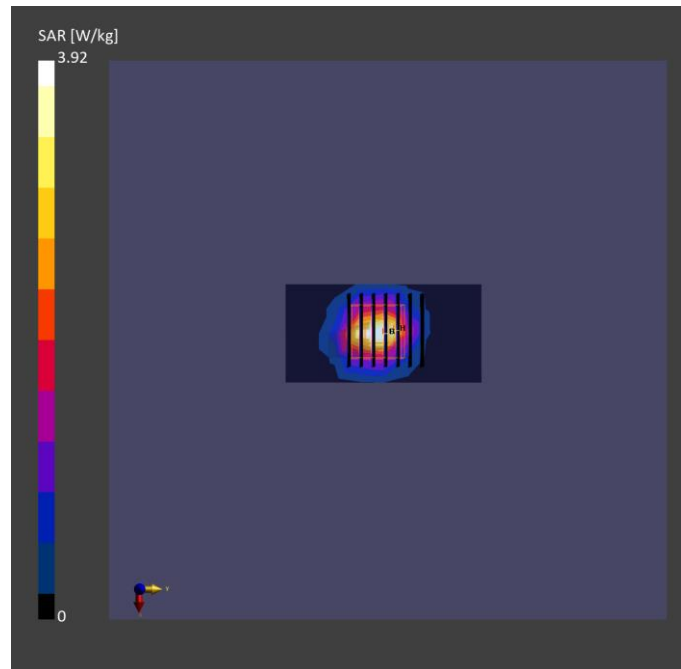
Phantom	Tissue Simulating Liquid	Probe   Calibration Date	DAE   Calibration Date
ELI V8.0 (20deg probe tilt) - 2141	HBBL-600-10000	EX3DV4 - SN7737 / 2023-06-05	DAE4 Sn1743 / 2023-08-17

**Scan Setup**

	Area Scan	Zoom Scan
Grid Extents [mm]	40.0 x 80.0	28.0 x 28.0 x 28.0
Grid Steps [mm]	10.0 x 10.0	5.0 x 5.0 x 1.4
Sensor Surface [mm]	3.0	1.4
Graded Grid	N/A	Yes
Grading Ratio	N/A	1.5

**Measurement Results**

	Area Scan	Zoom Scan
psSAR-1g [W/kg]	3.12	<b>3.16</b>
psSAR-10g [W/kg]	1.14	<b>1.17</b>
Power Drift [dB]		0.01
TSL Correction	Positive only	Positive only



Test Date : 2024-03-02 | Ambient Temp : 22.5 °C | Tissue Temp : 22.1 °C

**System Performance Check**

**System Performance Check\_H5250**

**Verification Source Properties**

Manufacturer	Model No.	Serial No.	Input Power [dBm]
SPEAG	D5GHz	1358	17.0

**Exposure Conditions**

Phantom Section	Group	Frequency [MHz]	Conversion Factor	TSL Conductivity [S/m]	TSL Permittivity
Flat	CW	5250.000	5.58	4.46	35.9

**Hardware Setup**

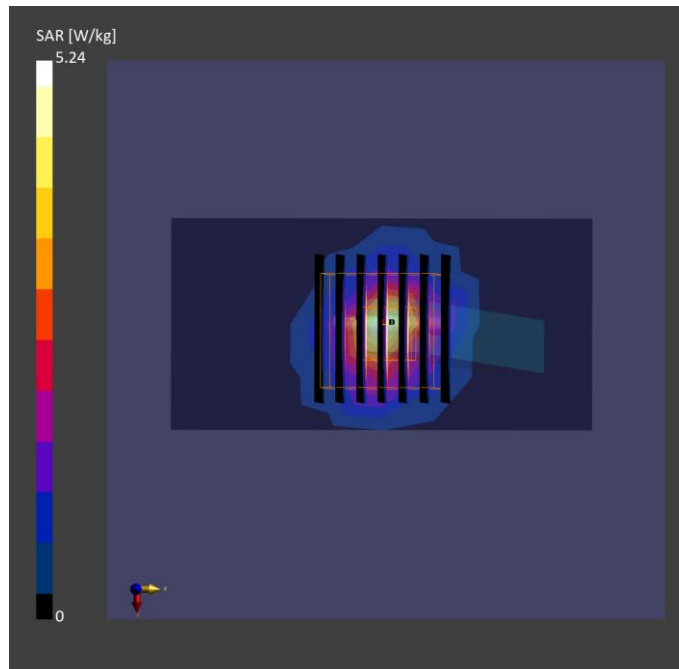
Phantom	Tissue Simulating Liquid	Probe   Calibration Date	DAE   Calibration Date
ELI V8.0 (20deg probe tilt) - 2141	HBBL-600-10000	EX3DV4 - SN7737 / 2023-06-05	DAE4 Sn1743 / 2023-08-17

**Scan Setup**

	Area Scan	Zoom Scan
Grid Extents [mm]	40.0 x 80.0	22.0 x 22.0 x 22.0
Grid Steps [mm]	10.0 x 10.0	4.0 x 4.0 x 1.4
Sensor Surface [mm]	3.0	1.4
Graded Grid	N/A	Yes
Grading Ratio	N/A	1.4

**Measurement Results**

	Area Scan	Zoom Scan
psSAR-1g [W/kg]	3.25	<b>3.62</b>
psSAR-10g [W/kg]	0.946	<b>1.13</b>
Power Drift [dB]		0.02
TSL Correction	Positive only	Positive only



Test Date : 2024-03-03 | Ambient Temp : 22.5 °C | Tissue Temp : 22.1 °C

**System Performance Check**

**System Performance Check\_H5600**

**Verification Source Properties**

Manufacturer	Model No.	Serial No.	Input Power [dBm]
SPEAG	D5GHz	1358	17.0

**Exposure Conditions**

Phantom Section	Group	Frequency [MHz]	Conversion Factor	TSL Conductivity [S/m]	TSL Permittivity
Flat	CW	5600.000	4.83	4.97	36.4

**Hardware Setup**

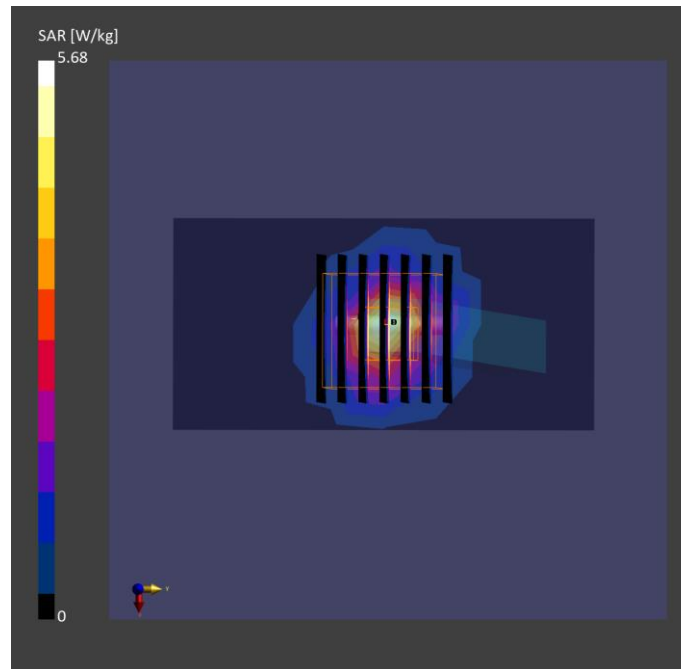
Phantom	Tissue Simulating Liquid	Probe   Calibration Date	DAE   Calibration Date
ELI V8.0 (20deg probe tilt) - 2141	HBBL-600-10000	EX3DV4 - SN7737 / 2023-06-05	DAE4 Sn1743 / 2023-08-17

**Scan Setup**

	Area Scan	Zoom Scan
Grid Extents [mm]	40.0 x 80.0	22.0 x 22.0 x 22.0
Grid Steps [mm]	10.0 x 10.0	4.0 x 4.0 x 1.4
Sensor Surface [mm]	3.0	1.4
Graded Grid	N/A	Yes
Grading Ratio	N/A	1.4

**Measurement Results**

	Area Scan	Zoom Scan
psSAR-1g [W/kg]	3.55	<b>3.86</b>
psSAR-10g [W/kg]	1.01	<b>1.11</b>
Power Drift [dB]		0.01
TSL Correction	Positive only	Positive only



Test Date : 2024-03-04 | Ambient Temp : 22.4 °C | Tissue Temp : 21.8 °C

**System Performance Check**

**System Performance Check\_H5800**

**Verification Source Properties**

Manufacturer	Model No.	Serial No.	Input Power [dBm]
SPEAG	D5GHz	1358	17.0

**Exposure Conditions**

Phantom Section	Group	Frequency [MHz]	Conversion Factor	TSL Conductivity [S/m]	TSL Permittivity
Flat	CW	5800.000	4.90	4.9	37.8

**Hardware Setup**

Phantom	Tissue Simulating Liquid	Probe   Calibration Date	DAE   Calibration Date
ELI V8.0 (20deg probe tilt) - 2141	HBBL-600-10000	EX3DV4 - SN7737 / 2023-06-05	DAE4 Sn1743 / 2023-08-17

**Scan Setup**

	Area Scan	Zoom Scan
Grid Extents [mm]	40.0 x 80.0	22.0 x 22.0 x 22.0
Grid Steps [mm]	10.0 x 10.0	4.0 x 4.0 x 1.4
Sensor Surface [mm]	3.0	1.4
Graded Grid	N/A	Yes
Grading Ratio	N/A	1.4

**Measurement Results**

	Area Scan	Zoom Scan
psSAR-1g [W/kg]	3.12	<b>3.68</b>
psSAR-10g [W/kg]	0.894	<b>1.16</b>
Power Drift [dB]		0.02
TSL Correction	Positive only	Positive only

