

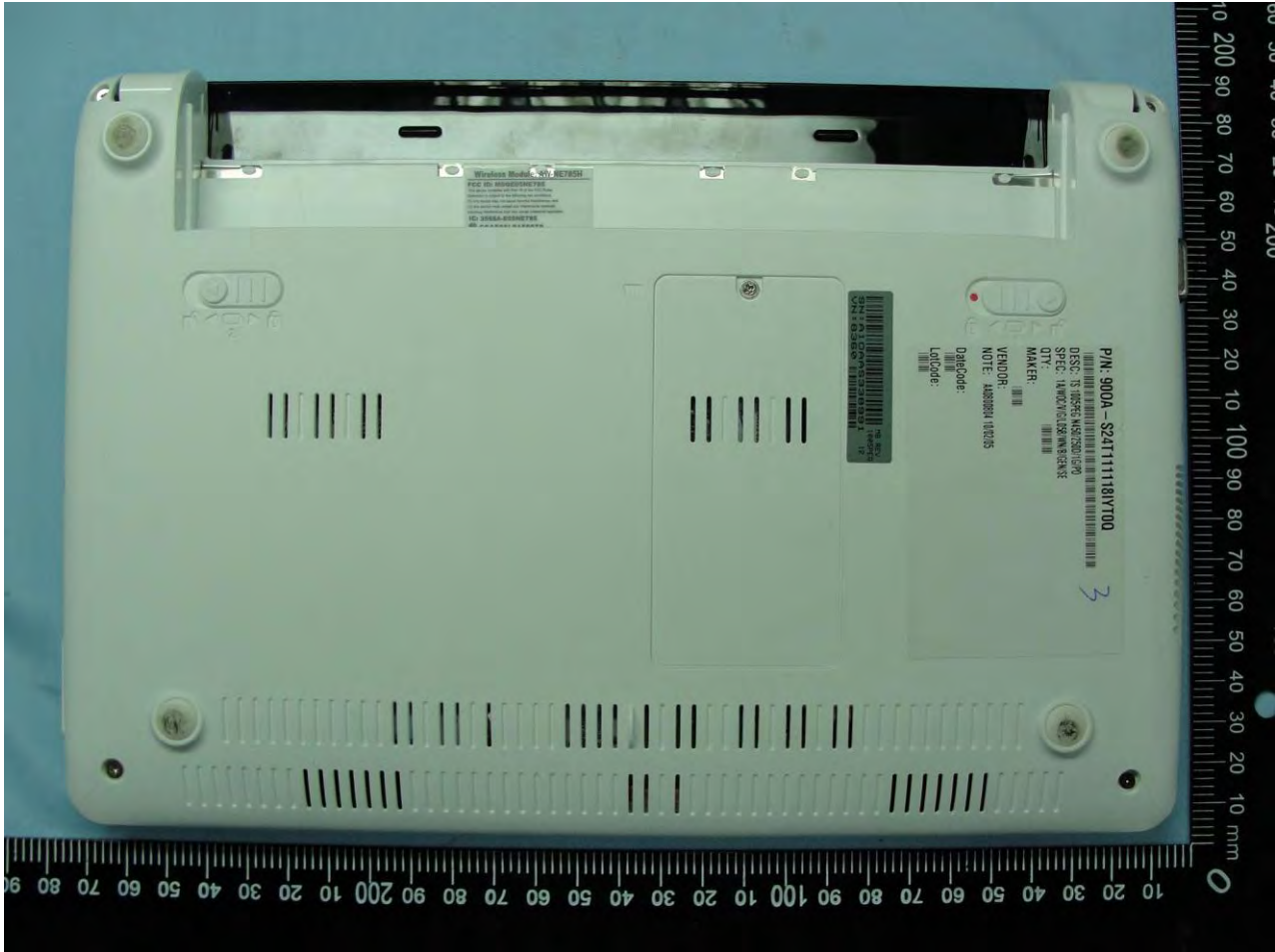


**1. External Photograph of EUT**

Model Name: Eee PC 1005PEG



Model Name: Eee PC 1005PEG





Model Name: Eee PC 1005PEG







**Model Name: Eee PC 1005PEG**



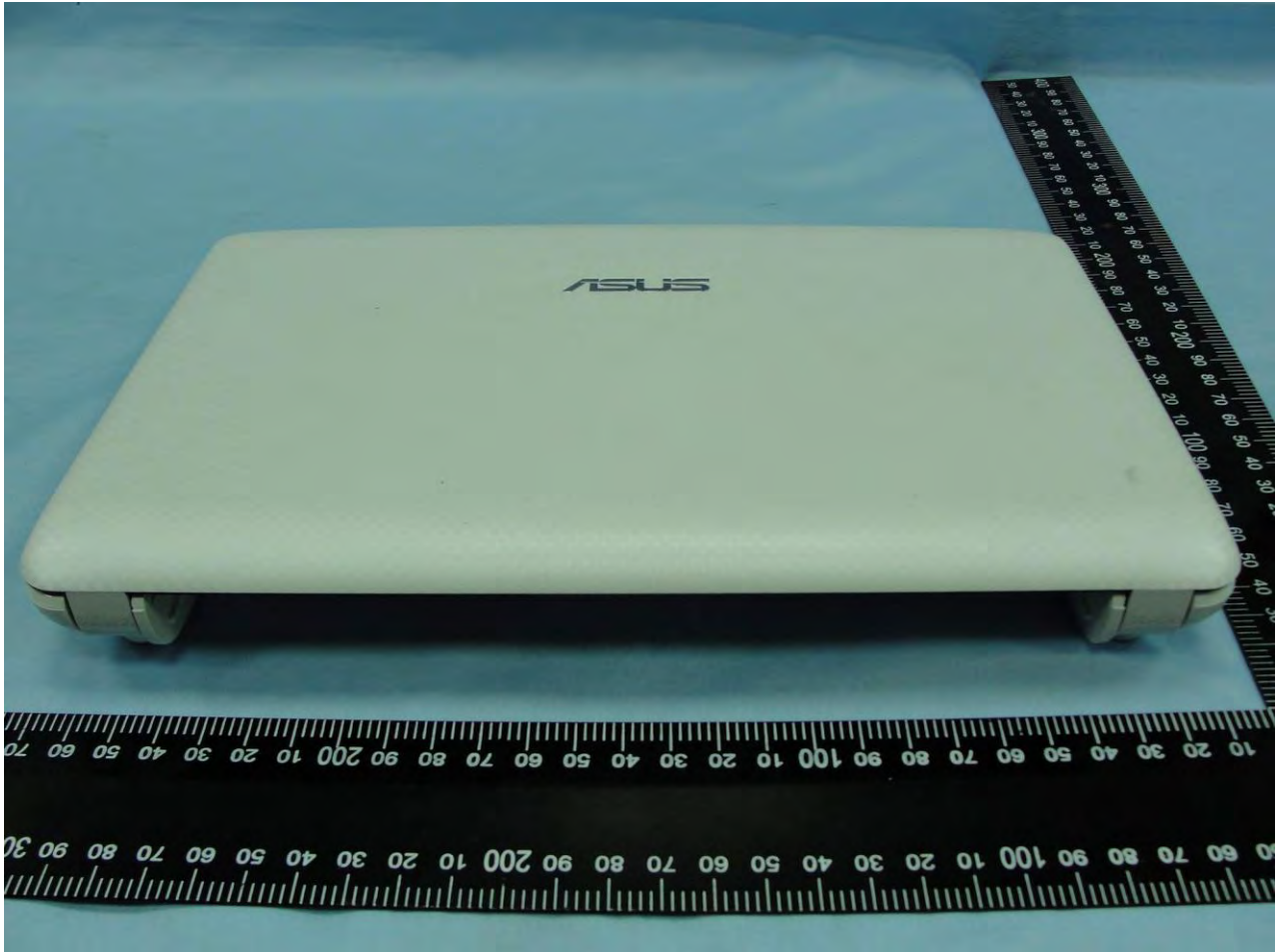


**Model Name: Eee PC 1005PEG**





**Model Name: Eee PC 1005PEG**





**Model Name: Eee PC 1005PEG**





Model Name: Eee PC 1005PEG





**2. Photograph of Accessory**
**Model Name: Eee PC 1005PEG**
**List of Accessory:**

Specification of Accessory		
AC Adapter 1	<b>Brand Name</b>	DELTA ELECTRONICS
	<b>Model Name</b>	ADP-40PH AB
	<b>Power Rating</b>	I/P:100-240Vac, 50-60Hz, 1.2A; O/P: 19Vdc, 2.1A
	<b>AC Power Cord Type</b>	1.8 meter shielded cable with ferrite core
AC Adapter 2	<b>Brand Name</b>	Enertronix Inc.
	<b>Model Name</b>	EXA0901XH
	<b>Power Rating</b>	I/P:100-240Vac, 50-60Hz, 1.2A; O/P: 19Vdc, 2.1A
	<b>AC Power Cord Type</b>	1.8 meter shielded cable with ferrite core
AC Adapter 3	<b>Brand Name</b>	PI ELECTRONICS
	<b>Model Name</b>	AD6630
	<b>Power Rating</b>	I/P:100-240Vac, 50-60Hz, 1.2A; O/P: 19Vdc, 2.1A
	<b>AC Power Cord Type</b>	1.8 meter shielded cable with ferrite core
Battery	<b>Brand Name</b>	ASUS
	<b>Model Name</b>	PL32-1005
	<b>Power Rating</b>	10.8Vdc, 5800mAh
	<b>Type</b>	Li-ion
WWAN Module	<b>Brand Name</b>	Ericsson
	<b>Model Name</b>	F3307
WLAN Module	<b>Brand Name</b>	AZWAVE
	<b>Model Name</b>	AW-NE785H
Bluetooth Module	<b>Brand Name</b>	AZWAVE
	<b>Model Name</b>	BT270

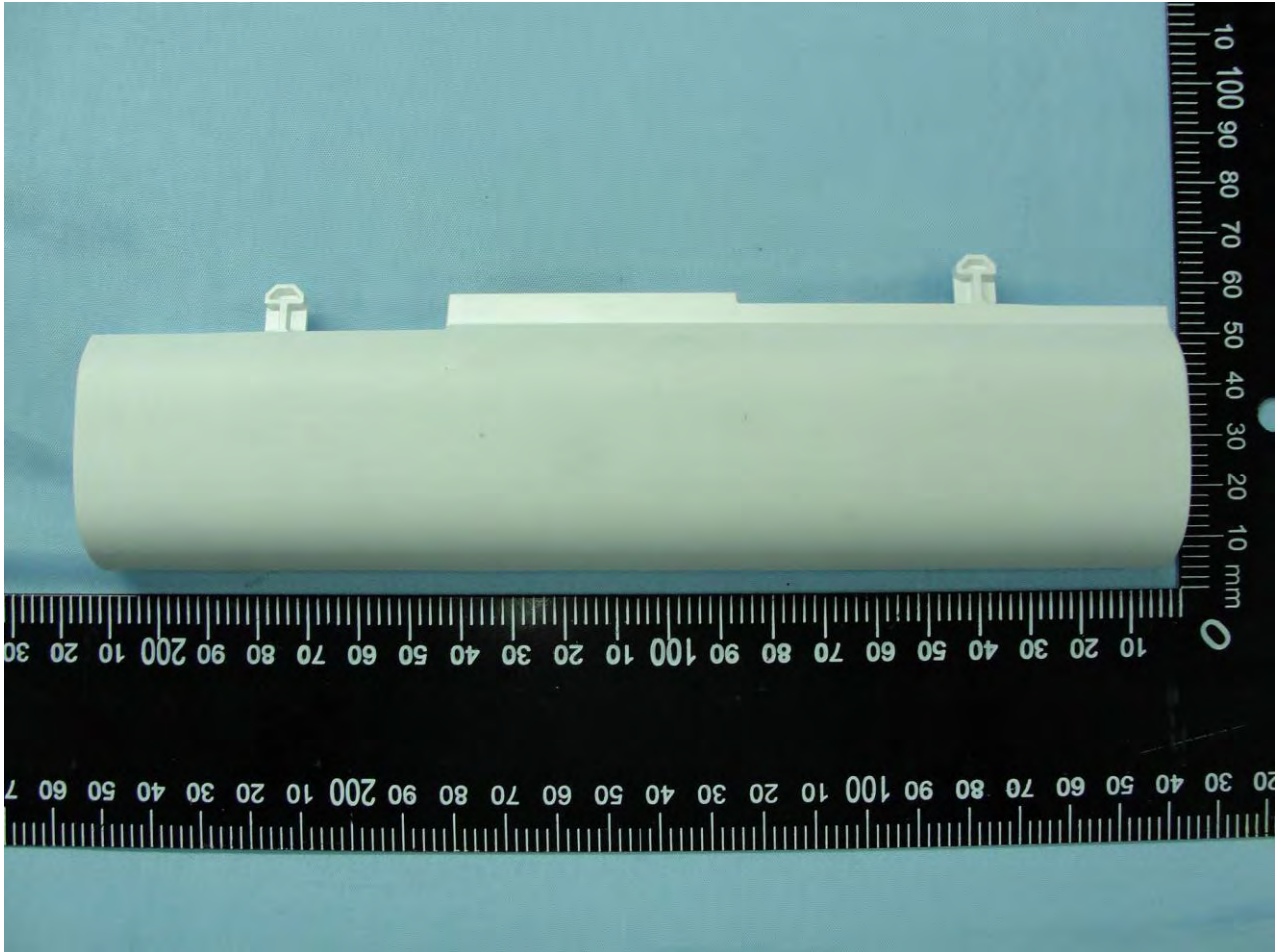
**Remark:** For accessories equipped with this EUT, please refer to the following photos.

Model Name: Eee PC 1005PEG



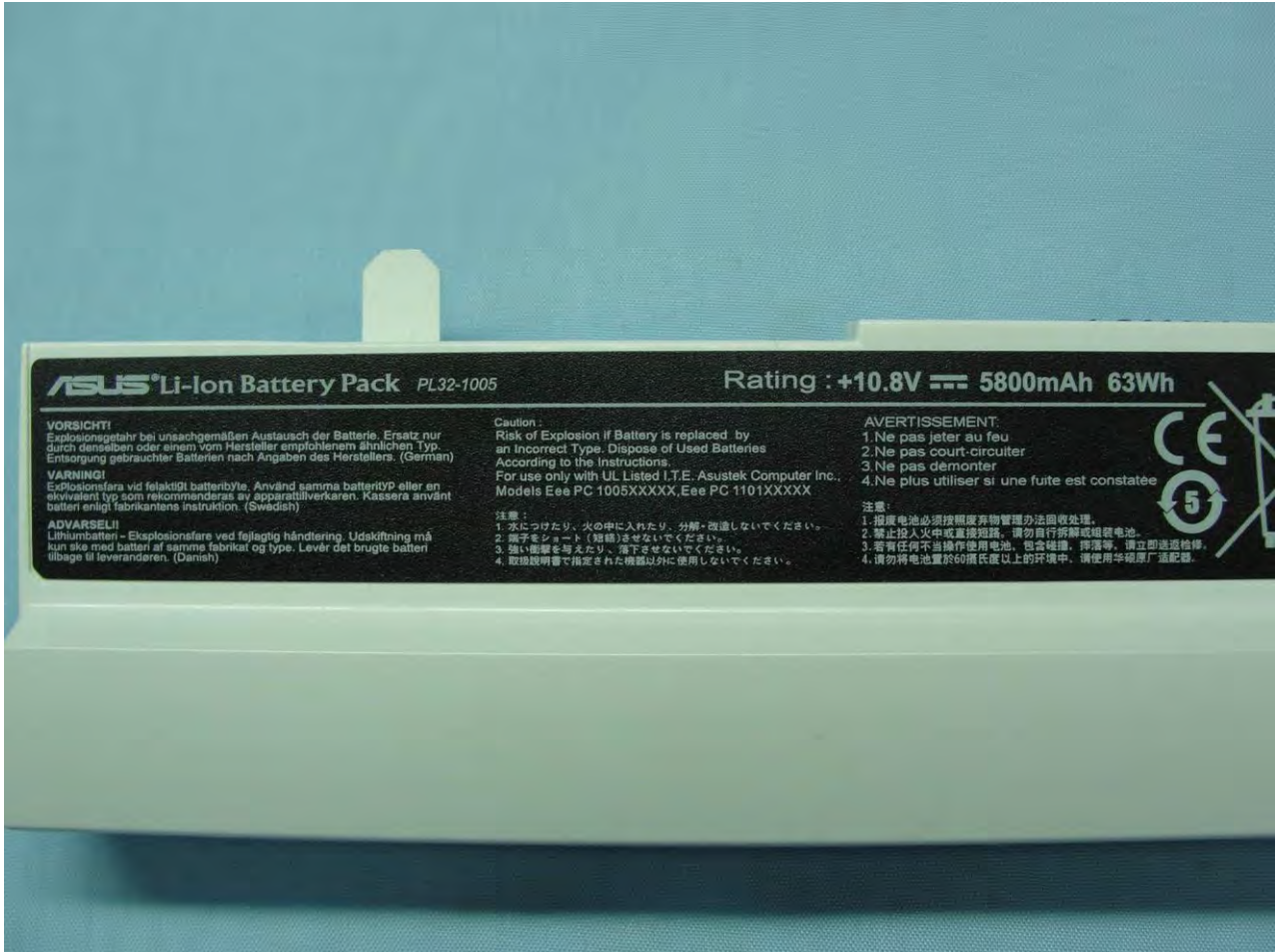


Model Name: Eee PC 1005PEG





Model Name: Eee PC 1005PEG



Model Name: Eee PC 1005PEG

**Adapter 1**





Model Name: Eee PC 1005PEG



Model Name: Eee PC 1005PEG





Model Name: Eee PC 1005PEG

Adapter 2



Model Name: Eee PC 1005PEG





Model Name: Eee PC 1005PEG



Model Name: Eee PC 1005PEG

Adapter 3





Model Name: Eee PC 1005PEG



Model Name: Eee PC 1005PEG

