

## *Appendix C - Highest Measurement Plots*

Test Date : 2023-10-02 | Ambient Temp : 22.0 °C | Tissue Temp : 21.8 °C

**Test Mode**

**9\_WLAN 2.4 GHz\_802.11b\_20M\_Bottom of laptop\_0mm\_Ch6\_Ant 0\_Ant Brand 1**

**Device Under Test Properties**

Manufacturer or Brand	Model No. or Code Name	Sample No. or IMEI	DUT Type
ASUS	GU605M	R8NTCX000310347	Laptop

**Exposure Conditions**

Phantom Section	Band	Group, UID	Frequency [MHz], Channel Number	Conversion Factor	TSL Conductivity [S/m]	TSL Permittivity
Flat	WLAN 2.4GHz	WLAN, 10415 - AAA	2437.000, 6	8.2	1.82	40.7

**Hardware Setup**

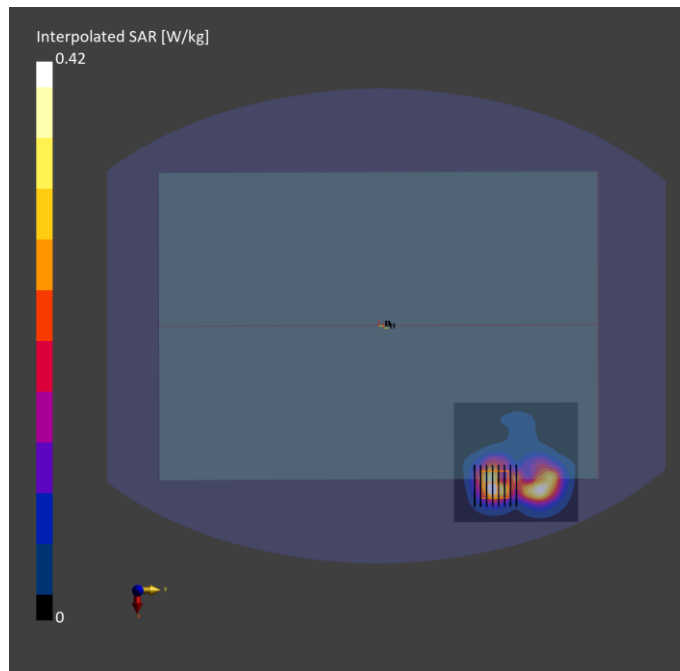
Phantom	Tissue Simulating Liquid	Probe   Calibration Date	DAE   Calibration Date
ELI V8.0 (20deg probe tilt) - 2180	HBBL-600-10000_230322	EX3DV4 - SN7650 / 2023-05-22	DAE4 Sn1741 / 2023-08-23

**Scan Setup**

	Area Scan	Zoom Scan
Grid Extents [mm]	96.0 x 100.0	30.0 x 30.0 x 30.0
Grid Steps [mm]	12.0 x 10.0	4.8 x 4.8 x 1.5
Sensor Surface [mm]	3.0	1.4
Graded Grid	N/A	Yes
Grading Ratio	N/A	1.5

**Measurement Results**

	Area Scan	Zoom Scan
psSAR-1g [W/kg]	0.177	<b>0.170</b>
psSAR-10g [W/kg]	0.086	<b>0.080</b>
Power Drift [dB]		-0.01
TSL Correction	Positive only	Positive only
M2 / M1 [%]		73.7
Dist 3dB Peak [mm]		6.2



Test Date : 2023-10-02 | Ambient Temp : 22.1 °C | Tissue Temp : 21.7 °C

**Test Mode**

**10\_WLAN 5 GHz\_802.11a\_20M\_Bottom of laptop\_0mm\_Ch60\_Ant 0\_Ant Brand 1**

**Device Under Test Properties**

Manufacturer or Brand	Model No. or Code Name	Sample No. or IMEI	DUT Type
ASUS	GU605M	R8NTCX000310347	Laptop

**Exposure Conditions**

Phantom Section	Band	Group, UID	Frequency [MHz], Channel Number	Conversion Factor	TSL Conductivity [S/m]	TSL Permittivity
Flat	WLAN 5GHz	WLAN, 10417 - AAC	5300.000, 60	5.91	4.88	38.5

**Hardware Setup**

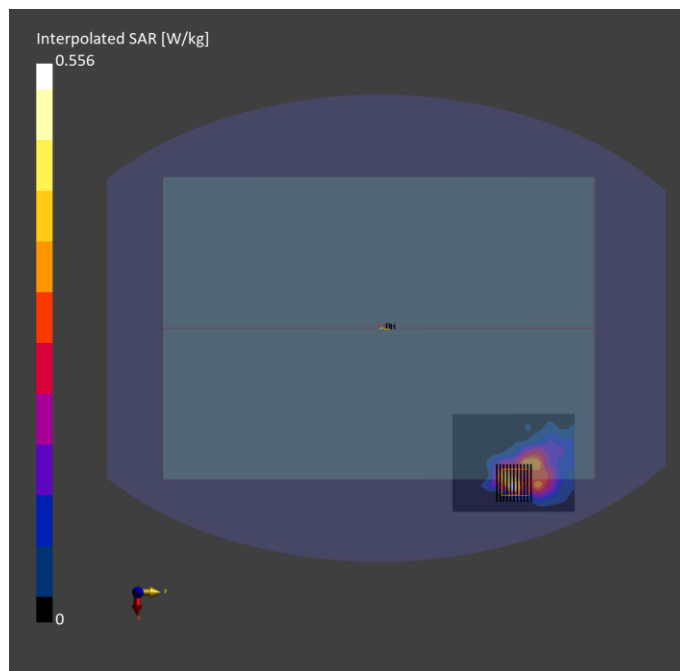
Phantom	Tissue Simulating Liquid	Probe   Calibration Date	DAE   Calibration Date
ELI V8.0 (20deg probe tilt) - 2180	HBBL-600-10000_230322	EX3DV4 - SN7650 / 2023-05-22	DAE4 Sn1741 / 2023-08-23

**Scan Setup**

	Area Scan	Zoom Scan
Grid Extents [mm]	80.0 x 100.0	22.0 x 22.0 x 22.0
Grid Steps [mm]	10.0 x 10.0	2.8 x 2.8 x 1.2
Sensor Surface [mm]	3.0	1.4
Graded Grid	N/A	Yes
Grading Ratio	N/A	1.2

**Measurement Results**

	Area Scan	Zoom Scan
psSAR-1g [W/kg]	0.133	<b>0.120</b>
psSAR-10g [W/kg]	0.049	<b>0.042</b>
Power Drift [dB]		-0.06
TSL Correction	Positive only	Positive only
M2 / M1 [%]		70.2
Dist 3dB Peak [mm]		3.6



Test Date : 2023-10-02 | Ambient Temp : 22.2 °C | Tissue Temp : 21.8°C

**Test Mode**

**11\_WLAN 5 GHz\_802.11a\_20M\_Bottom of laptop\_0mm\_Ch116\_Ant 0\_Ant Brand 1**

**Device Under Test Properties**

Manufacturer or Brand	Model No. or Code Name	Sample No. or IMEI	DUT Type
ASUS	GU605M	R8NTCX000310347	Laptop

**Exposure Conditions**

Phantom Section	Band	Group, UID	Frequency [MHz], Channel Number	Conversion Factor	TSL Conductivity [S/m]	TSL Permittivity
Flat	WLAN 5GHz	WLAN, 10417 - AAC	5580.000, 116	5.25	5.22	37.9

**Hardware Setup**

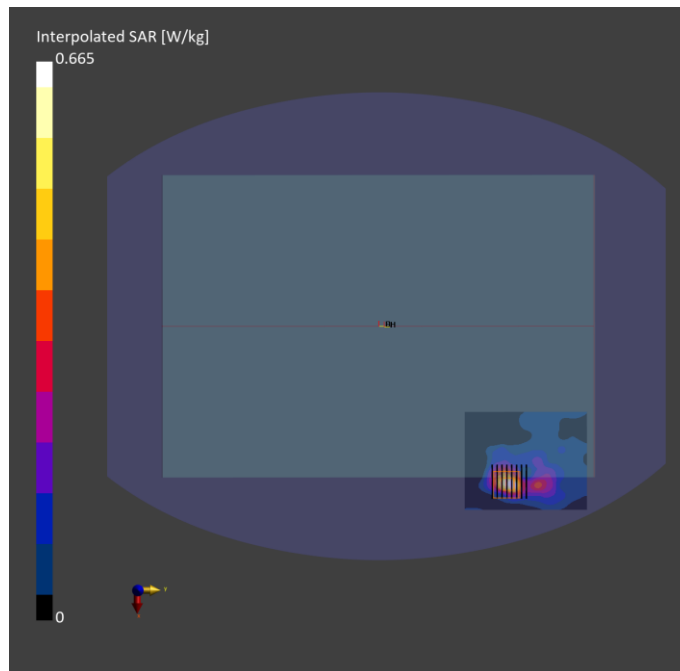
Phantom	Tissue Simulating Liquid	Probe   Calibration Date	DAE   Calibration Date
ELI V8.0 (20deg probe tilt) - 2180	HBBL-600-10000_230322	EX3DV4 - SN7650 / 2023-05-22	DAE4 Sn1741 / 2023-08-23

**Scan Setup**

	Area Scan	Zoom Scan
Grid Extents [mm]	80.0 x 100.0	22.0 x 22.0 x 22.0
Grid Steps [mm]	10.0 x 10.0	4.0 x 4.0 x 1.4
Sensor Surface [mm]	3.0	1.4
Graded Grid	N/A	Yes
Grading Ratio	N/A	1.4

**Measurement Results**

	Area Scan	Zoom Scan
psSAR-1g [W/kg]	0.165	<b>0.158</b>
psSAR-10g [W/kg]	0.055	<b>0.052</b>
Power Drift [dB]		0.18
TSL Correction	Positive only	Positive only
M2 / M1 [%]		71.5
Dist 3dB Peak [mm]		5.4



Test Date : 2023-10-02 | Ambient Temp : 22.3 °C | Tissue Temp : 21.8°C

**Test Mode**

**12\_WLAN 5 GHz\_802.11a\_20M\_Bottom of laptop\_0mm\_Ch165\_Ant 0\_Ant Brand 1**

**Device Under Test Properties**

Manufacturer or Brand	Model No. or Code Name	Sample No. or IMEI	DUT Type
ASUS	GU605M	R8NTCX000310347	Laptop

**Exposure Conditions**

Phantom Section	Band	Group, UID	Frequency [MHz], Channel Number	Conversion Factor	TSL Conductivity [S/m]	TSL Permittivity
Flat	WLAN 5GHz	WLAN, 10417 - AAC	5825.000, 165	5.28	5.52	37.5

**Hardware Setup**

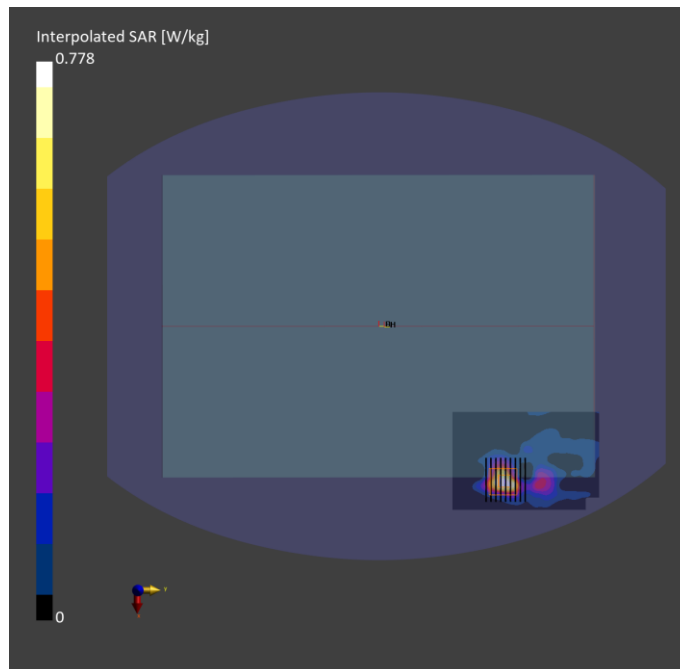
Phantom	Tissue Simulating Liquid	Probe   Calibration Date	DAE   Calibration Date
ELI V8.0 (20deg probe tilt) - 2180	HBBL-600-10000_230322	EX3DV4 - SN7650 / 2023-05-22	DAE4 Sn1741 / 2023-08-23

**Scan Setup**

	Area Scan	Zoom Scan
Grid Extents [mm]	80.0 x 120.0	22.0 x 22.0 x 22.0
Grid Steps [mm]	10.0 x 10.0	4.0 x 4.0 x 1.4
Sensor Surface [mm]	3.0	1.4
Graded Grid	N/A	Yes
Grading Ratio	N/A	1.4

**Measurement Results**

	Area Scan	Zoom Scan
psSAR-1g [W/kg]	0.168	<b>0.177</b>
psSAR-10g [W/kg]	0.057	<b>0.054</b>
Power Drift [dB]		0.07
TSL Correction	Positive only	Positive only
M2 / M1 [%]		68.4
Dist 3dB Peak [mm]		6.6



Test Date : 2023-10-03 | Ambient Temp : 22.0 °C | Tissue Temp : 22.2°C

**Test Mode**

**13\_WLAN 6 GHz\_802.11ax HE 160\_Bottom of laptop\_0mm\_Ch47\_Ant 0\_Ant Brand 1**

**Device Under Test Properties**

Manufacturer or Brand	Model No. or Code Name	Sample No. or IMEI	DUT Type
ASUS	GU605M	R8NTCX000310347	Laptop

**Exposure Conditions**

Phantom Section	Band	Group, UID	Frequency [MHz], Channel Number	Conversion Factor	TSL Conductivity [S/m]	TSL Permittivity
Flat	U-NII-5	WLAN, 10755 - AAC	6185.000, 47	5.4	6.00	36.8

**Hardware Setup**

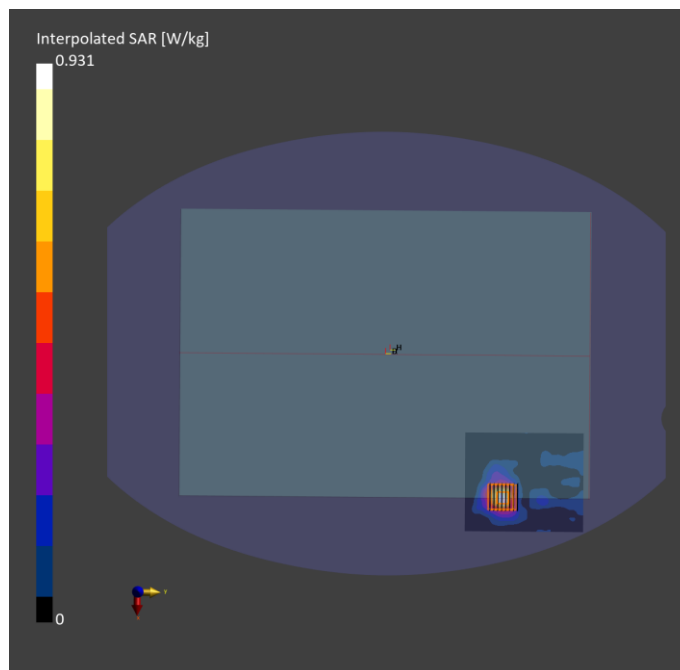
Phantom	Tissue Simulating Liquid	Probe   Calibration Date	DAE   Calibration Date
ELI V8.0 (20deg probe tilt) - 2180	HBBL-600-10000_230322	EX3DV4 - SN7650 / 2023-05-22	DAE4 Sn1741 / 2023-08-23

**Scan Setup**

	Area Scan	Zoom Scan
Grid Extents [mm]	85.0 x 102.0	22.0 x 22.0 x 22.0
Grid Steps [mm]	8.5 x 8.5	3.4 x 3.4 x 1.4
Sensor Surface [mm]	3.0	1.4
Graded Grid	N/A	Yes
Grading Ratio	N/A	1.4

**Measurement Results**

	Area Scan	Zoom Scan
psSAR-1g [W/kg]	0.202	<b>0.202</b>
psSAR-10g [W/kg]	0.069	<b>0.063</b>
psAPD (1.0 cm <sup>2</sup> , sq) [W/m <sup>2</sup> ]		<b>2.02</b>
psAPD (4.0 cm <sup>2</sup> , sq) [W/m <sup>2</sup> ]		<b>1.46</b>
Power Drift [dB]		0.20
TSL Correction	Positive only	Positive only
M2 / M1 [%]		59.3
Dist 3dB Peak [mm]		7.8



Test Date : 2023-10-03 | Ambient Temp : 22.1 °C | Tissue Temp : 22.3°C

**Test Mode**

**14\_WLAN 6 GHz\_802.11ax HE 160\_Bottom of laptop\_0mm\_Ch111\_Ant 0\_Ant Brand 1**

**Device Under Test Properties**

Manufacturer or Brand	Model No. or Code Name	Sample No. or IMEI	DUT Type
ASUS	GU605M	R8NTCX000310347	Laptop

**Exposure Conditions**

Phantom Section	Band	Group, UID	Frequency [MHz], Channel Number	Conversion Factor	TSL Conductivity [S/m]	TSL Permittivity
Flat	U-NII-6	WLAN, 10755 - AAC	6505.000, 111	5.4	6.40	36.2

**Hardware Setup**

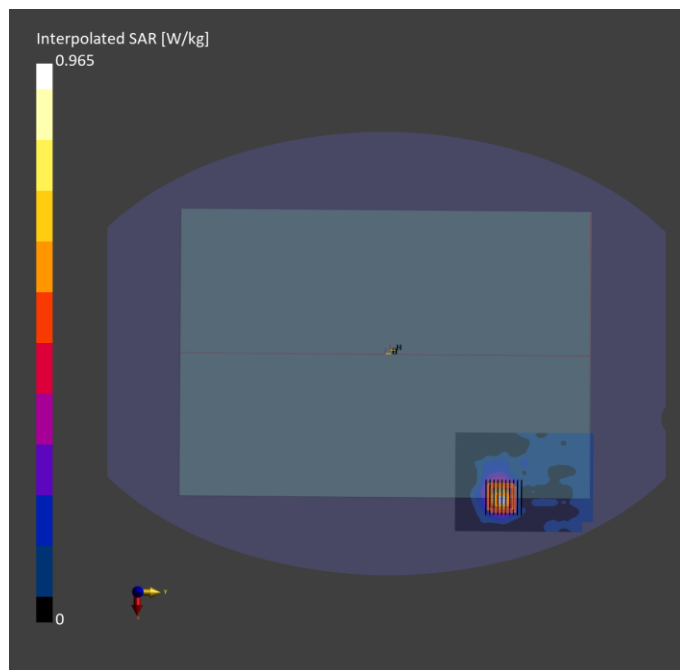
Phantom	Tissue Simulating Liquid	Probe   Calibration Date	DAE   Calibration Date
ELI V8.0 (20deg probe tilt) - 2180	HBBL-600-10000_230322	EX3DV4 - SN7650 / 2023-05-22	DAE4 Sn1741 / 2023-08-23

**Scan Setup**

	Area Scan	Zoom Scan
Grid Extents [mm]	85.0 x 119.0	22.0 x 22.0 x 22.0
Grid Steps [mm]	8.5 x 8.5	3.4 x 3.4 x 1.4
Sensor Surface [mm]	3.0	1.4
Graded Grid	N/A	Yes
Grading Ratio	N/A	1.4

**Measurement Results**

	Area Scan	Zoom Scan
psSAR-1g [W/kg]	0.176	<b>0.188</b>
psSAR-10g [W/kg]	0.060	<b>0.055</b>
psAPD (1.0 cm <sup>2</sup> , sq) [W/m <sup>2</sup> ]		<b>1.88</b>
psAPD (4.0 cm <sup>2</sup> , sq) [W/m <sup>2</sup> ]		<b>1.27</b>
Power Drift [dB]		-0.06
TSL Correction	Positive only	Positive only
M2 / M1 [%]		57.0
Dist 3dB Peak [mm]		6.5



Test Date : 2023-10-03 | Ambient Temp : 22.2 °C | Tissue Temp : 22.3 °C

**Test Mode**

**15\_WLAN 6 GHz\_802.11ax HE 160\_Bottom of laptop\_0mm\_Ch175\_Ant 0\_Ant Brand 1**

**Device Under Test Properties**

Manufacturer or Brand	Model No. or Code Name	Sample No. or IMEI	DUT Type
ASUS	GU605M	R8NTCX000310347	Laptop

**Exposure Conditions**

Phantom Section	Band	Group, UID	Frequency [MHz], Channel Number	Conversion Factor	TSL Conductivity [S/m]	TSL Permittivity
Flat	U-NII-7	WLAN, 10755 - AAC	6825.000, 175	5.4	6.82	35.6

**Hardware Setup**

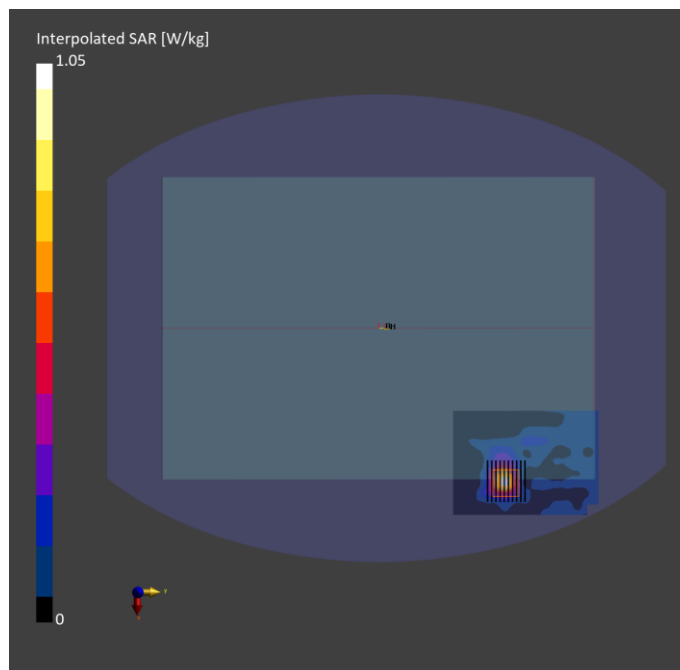
Phantom	Tissue Simulating Liquid	Probe   Calibration Date	DAE   Calibration Date
ELI V8.0 (20deg probe tilt) - 2180	HBBL-600-10000_230322	EX3DV4 - SN7650 / 2023-05-22	DAE4 Sn1741 / 2023-08-23

**Scan Setup**

	Area Scan	Zoom Scan
Grid Extents [mm]	85.0 x 119.0	22.0 x 22.0 x 22.0
Grid Steps [mm]	8.5 x 8.5	3.4 x 3.4 x 1.4
Sensor Surface [mm]	3.0	1.4
Graded Grid	N/A	Yes
Grading Ratio	N/A	1.4

**Measurement Results**

	Area Scan	Zoom Scan
psSAR-1g [W/kg]	0.186	<b>0.195</b>
psSAR-10g [W/kg]	0.061	<b>0.057</b>
psAPD (1.0 cm <sup>2</sup> , sq) [W/m <sup>2</sup> ]		<b>1.95</b>
psAPD (4.0 cm <sup>2</sup> , sq) [W/m <sup>2</sup> ]		<b>1.32</b>
Power Drift [dB]		-1.22
TSL Correction	No correction	No correction
M2 / M1 [%]		44.8
Dist 3dB Peak [mm]		7.3





Test Date : 2023-10-03 | Ambient Temp : 22.3 °C | Tissue Temp : 22.4 °C

**Test Mode**

**16\_WLAN 6 GHz\_802.11ax HE 160\_Bottom of laptop\_0mm\_Ch207\_Ant 0\_Ant Brand 1**

**Device Under Test Properties**

Manufacturer or Brand	Model No. or Code Name	Sample No. or IMEI	DUT Type
ASUS	GU605M	R8NTCX000310347	Laptop

**Exposure Conditions**

Phantom Section	Band	Group, UID	Frequency [MHz], Channel Number	Conversion Factor	TSL Conductivity [S/m]	TSL Permittivity
Flat	U-NII-8	WLAN, 10755 - AAC	6985.000, 207	5.4	7.02	35.3

**Hardware Setup**

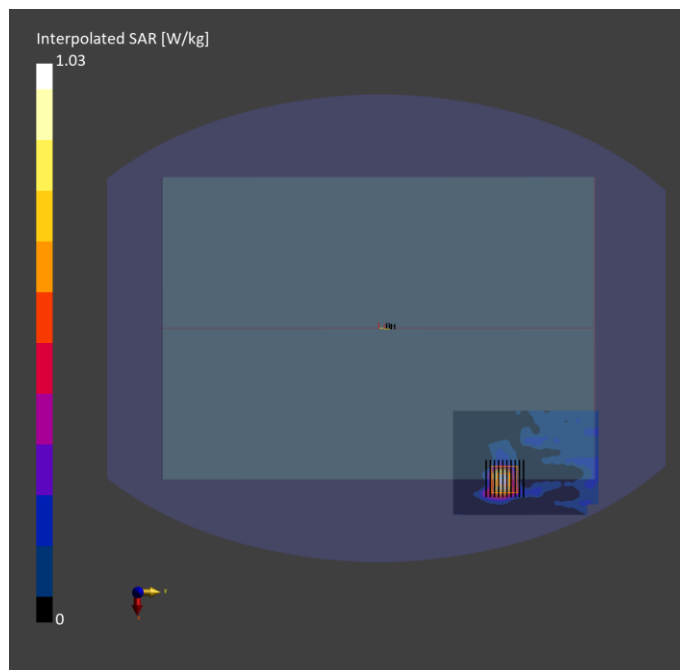
Phantom	Tissue Simulating Liquid	Probe   Calibration Date	DAE   Calibration Date
ELI V8.0 (20deg probe tilt) - 2180	HBBL-600-10000_230322	EX3DV4 - SN7650 / 2023-05-22	DAE4 Sn1741 / 2023-08-23

**Scan Setup**

	Area Scan	Zoom Scan
Grid Extents [mm]	85.0 x 119.0	22.0 x 22.0 x 22.0
Grid Steps [mm]	8.5 x 8.5	3.4 x 3.4 x 1.4
Sensor Surface [mm]	3.0	1.4
Graded Grid	N/A	Yes
Grading Ratio	N/A	1.4

**Measurement Results**

	Area Scan	Zoom Scan
psSAR-1g [W/kg]	0.173	<b>0.179</b>
psSAR-10g [W/kg]	0.060	<b>0.051</b>
psAPD (1.0 cm <sup>2</sup> , sq) [W/m <sup>2</sup> ]		<b>1.79</b>
psAPD (4.0 cm <sup>2</sup> , sq) [W/m <sup>2</sup> ]		<b>1.19</b>
Power Drift [dB]		0.10
TSL Correction	Positive only	Positive only
M2 / M1 [%]		53.8
Dist 3dB Peak [mm]		7.1



Test Date : 2024-03-21 | Ambient Temp : 22.6 °C

**Test Mode**

**13\_WLAN6G\_802.11ax HE160\_Bottom of Laptop\_0mm\_Ch47\_Ant 0\_INPAQ**

**Device Under Test Properties**

Manufacturer or Brand	Model No. or Code Name	Sample No. or IMEI	DUT Type
ASUS	GU605M	A003	Laptop

**Exposure Conditions**

Phantom Section	Band	Group, UID	Frequency [MHz], Channel Number	Conversion Factor
5G	U-NII-5	WLAN, 10755 - AAC	6185.0, 47	1.0

**Hardware Setup**

Phantom	Medium	Probe   Calibration Date	DAE   Calibration Date
mmWave - 1102	Air	EUmmWV3 - SN9403_F1-55GHz / 2023-12-05	DAE4 Sn1741 / 2023-08-23

**Scan Setup**

	5G Scan
Grid Extents [mm]	97.0 x 97.0
Grid Steps [mm]	0.0515 x 0.0515
Sensor Surface [mm]	2.0

**Measurement Results**

	5G Scan
Avg. Area [cm <sup>2</sup> ]	4.00
psPD n+ [W/m <sup>2</sup> ]	<b>1.37</b>
psPD tot+ [W/m <sup>2</sup> ]	<b>1.52</b>
psPD mod+ [W/m <sup>2</sup> ]	1.81
E max [V/m]	41.2
Power Drift [dB]	-0.05

