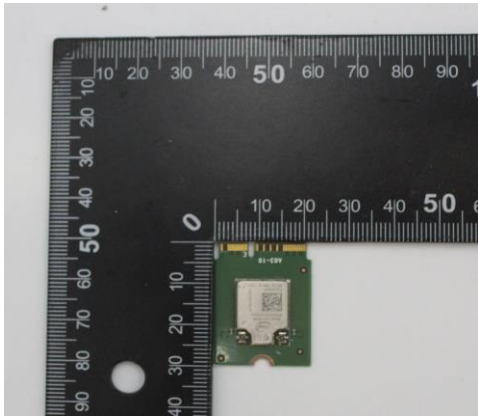


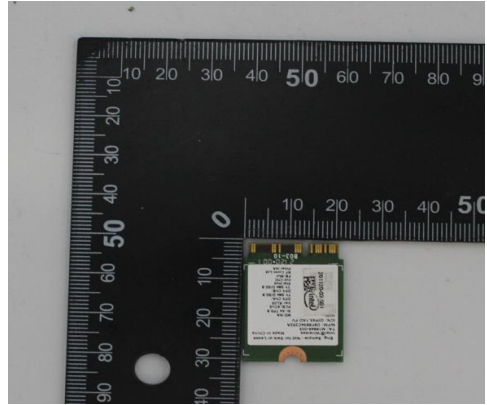
Annex F. Photographs

F.1 Test Sample

NGW Module Front : 201120-03. S01



NGW Module Back: 201120-03. S01




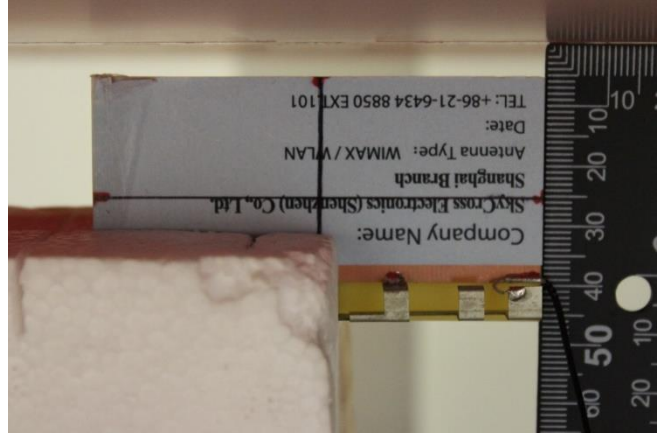

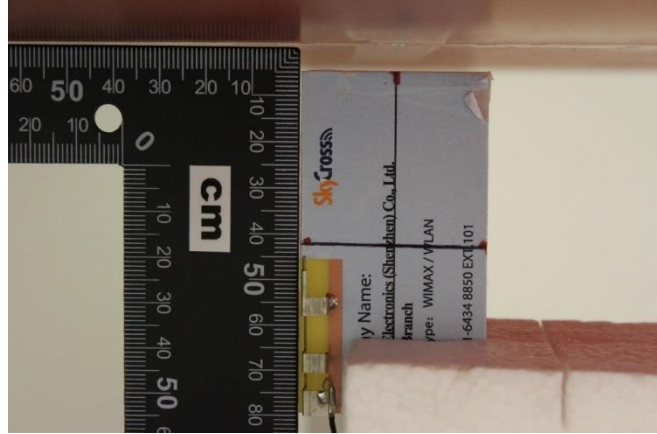
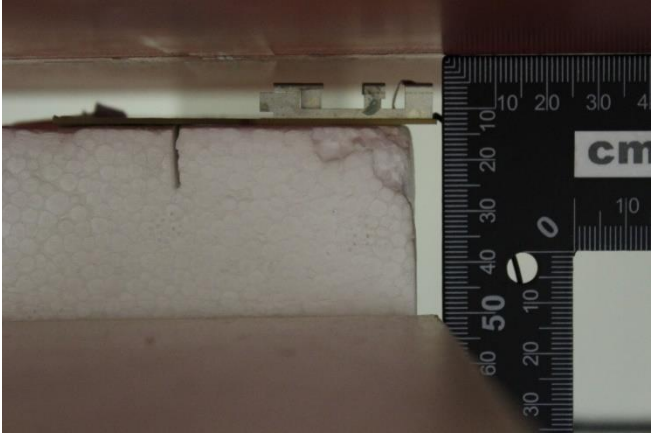
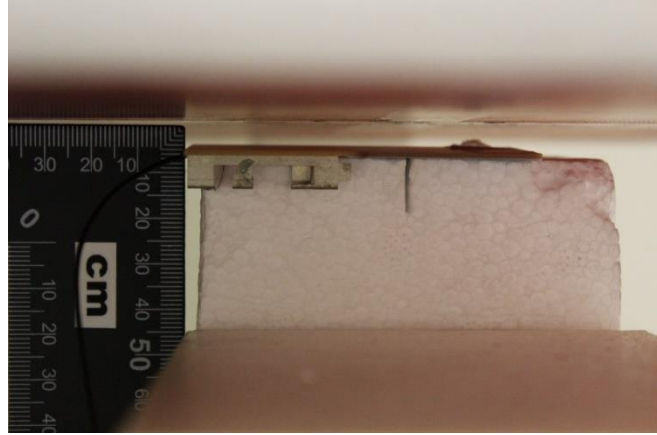
Platform Extender: 210611-03.S27




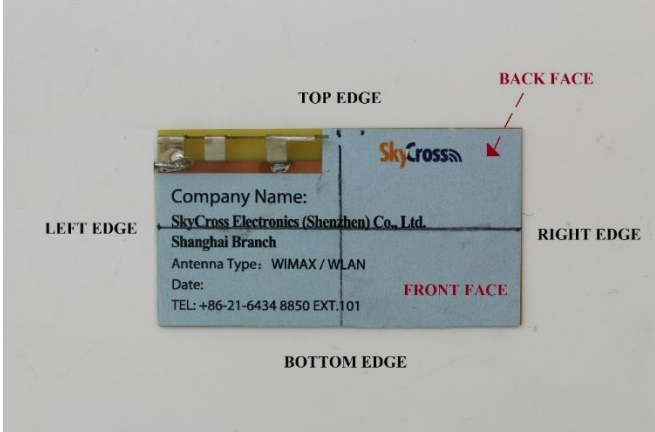
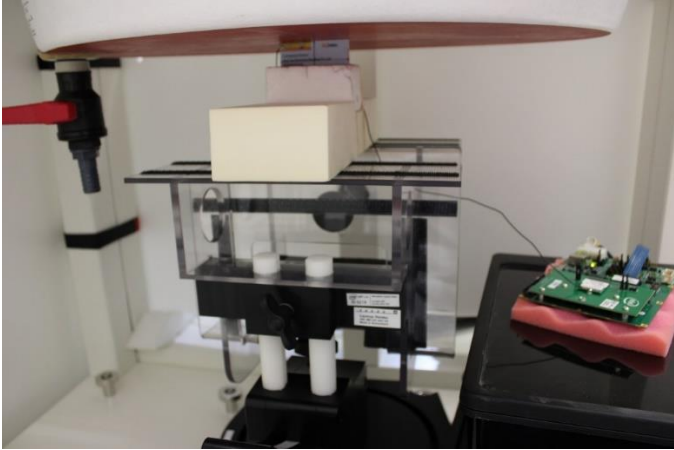
Laptop : 200611-01.S18



F.2 Test positions

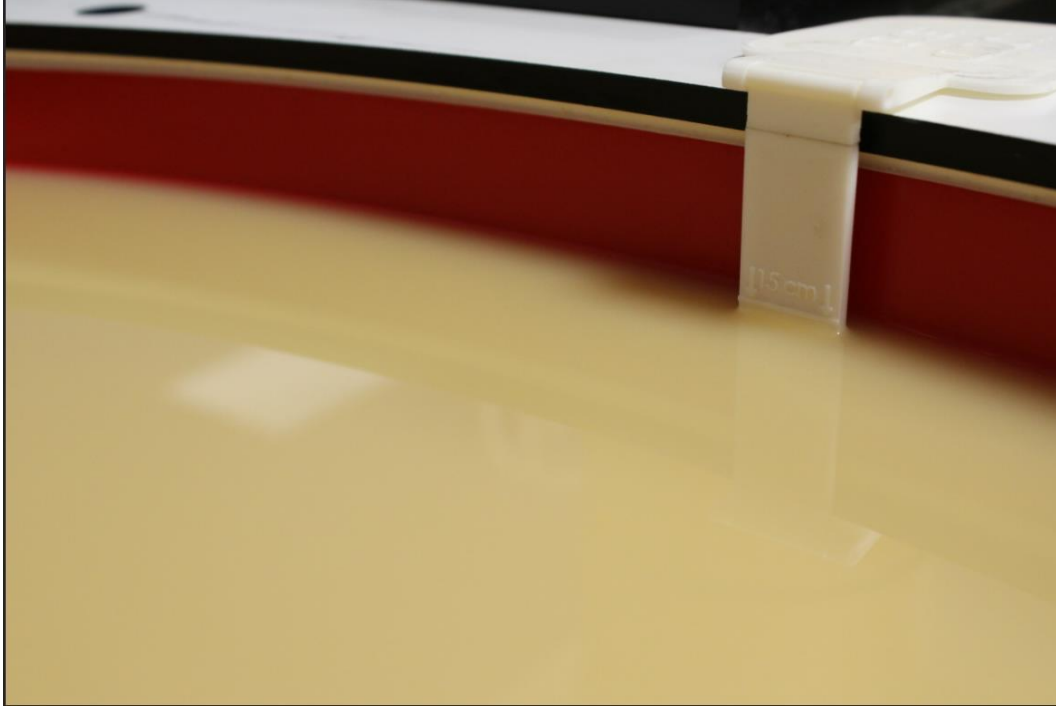
| Top Edge 5mm | Bottom Edge 5mm |
|---|--|
|  |  |
| Left Edge 5mm | Right Edge 5mm |
|  |  |
| Front Face 5mm | Back Face 5mm |
|  |  |

F.3 Antenna host platform location and adjacent edge positions relative to the body

| Antenna Front View | Antenna Positions |
|--|---|
|  <p>The image shows the front view of the antenna host platform. A ruler is placed above it for scale. The label on the platform reads: SkyCross Electronics (Shenzhen) Co., Ltd. Shanghai Branch, Antenna Type: WIMAX / WLAN, Date: , TEL: +86-21-6434 8850 EXT.101.</p> |  <p>The diagram shows the antenna host platform with labels for its edges: TOP EDGE, BOTTOM EDGE, LEFT EDGE, and RIGHT EDGE. The front face is labeled 'FRONT FACE' and the back face is labeled 'BACK FACE'.</p> |
| General Setup | |
|  <p>The photograph shows the general setup for the antenna test. A yellow antenna host platform is mounted on a black metal stand. A green printed circuit board (PCB) is connected to the antenna. A red probe is visible on the left side of the setup.</p> | |

F.4 Phantom liquid level during measurements

ELI phantom Body liquid SAR Dasy SPEAG MBL600-6000V6 Batch -1-180206-04



End of the report

This page is intentionally left blank and marks the last page of the test report.