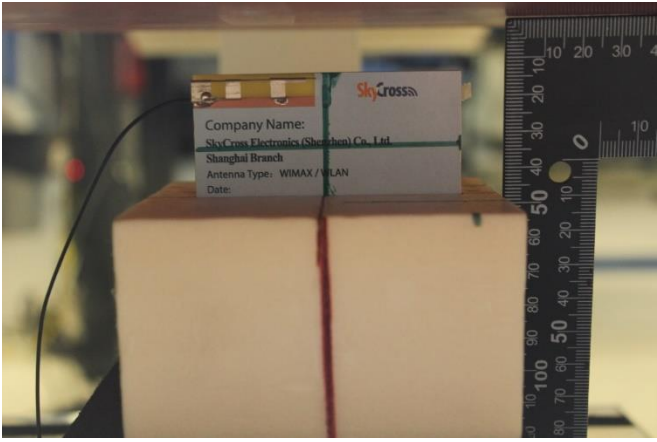

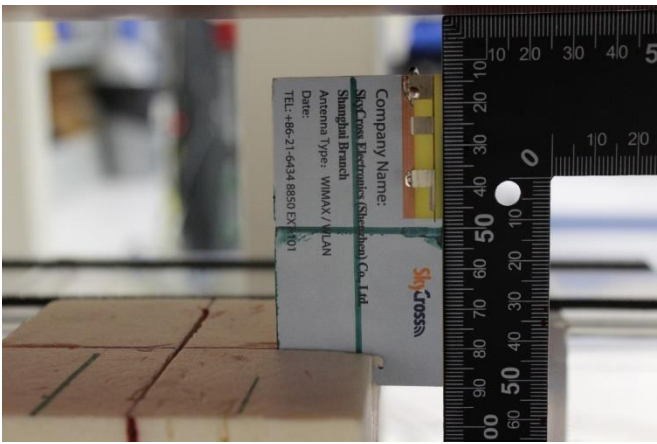
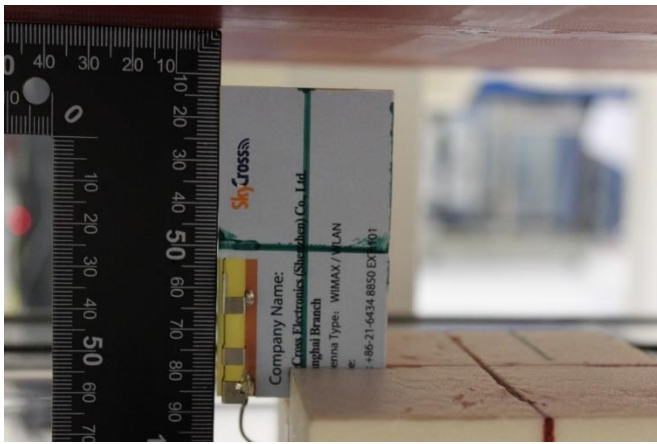
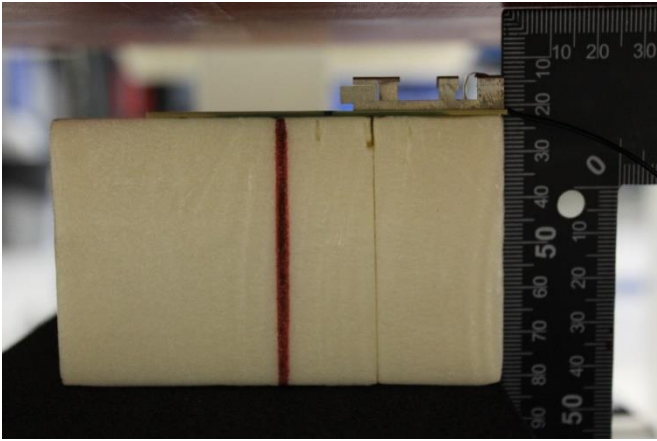
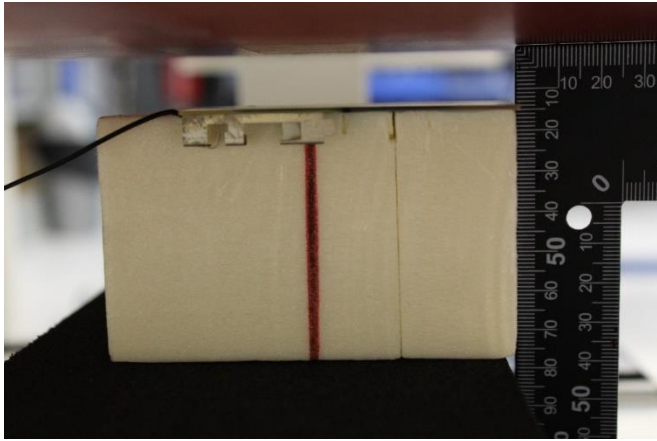
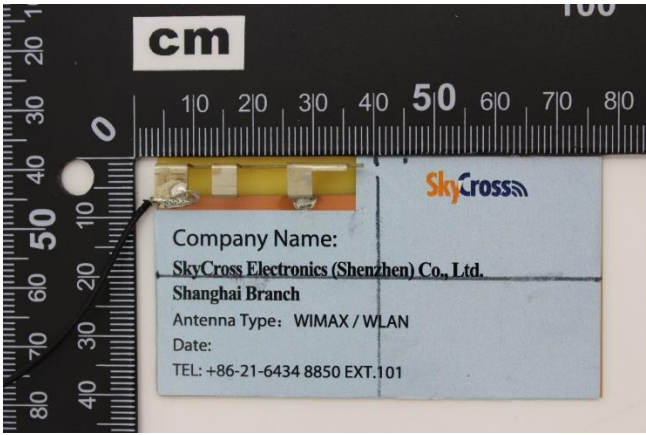
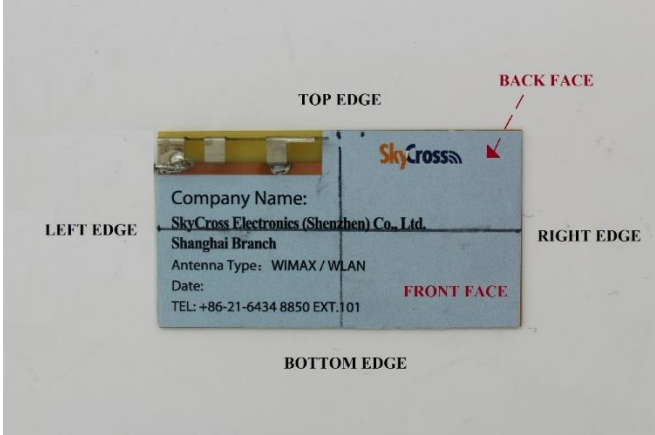
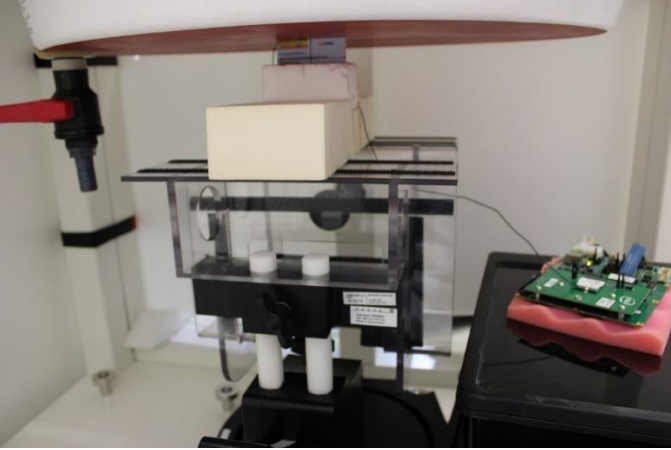




## F.2 Test positions

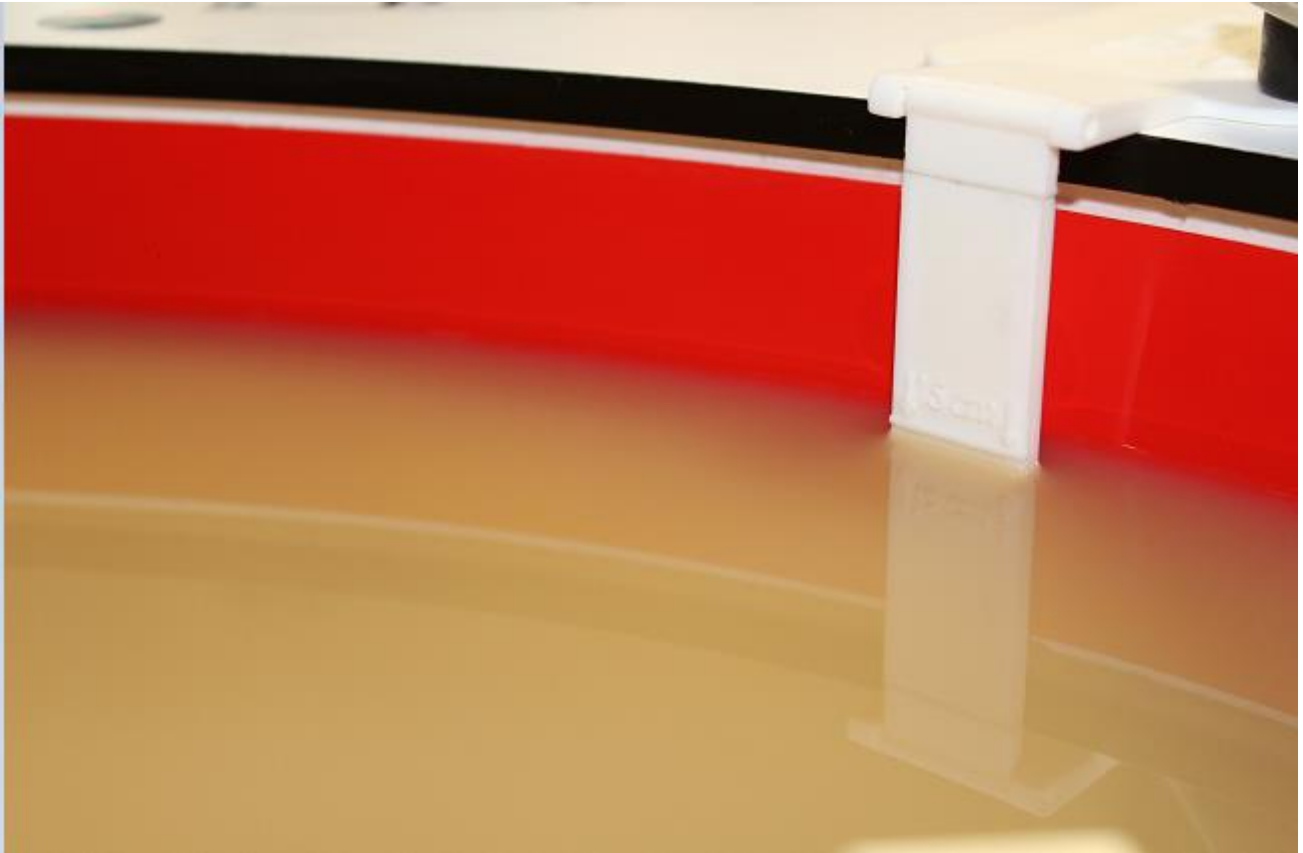
Top Edge	Bottom Edge
	
Left Edge	Right Edge
	
Front Face	Back Face
	

### F.3 Antenna host platform location and adjacent edge positions relative to the body

Antenna Front View	Antenna Positions
 <p>The image shows the front view of the antenna host platform. A black ruler is placed above the antenna for scale. The antenna is a rectangular white PCB with a yellow flex cable on the left side. A label is attached to the front, providing the following information:</p> <ul style="list-style-type: none"> <li>Company Name: SkyCross Electronics (Shenzhen) Co., Ltd.</li> <li>Shanghai Branch</li> <li>Antenna Type: WIMAX / WLAN</li> <li>Date:</li> <li>TEL: +86-21-6434 8850 EXT.101</li> </ul>	 <p>The diagram shows the antenna host platform with its edges and faces labeled. The labels are:</p> <ul style="list-style-type: none"> <li>TOP EDGE</li> <li>LEFT EDGE</li> <li>RIGHT EDGE</li> <li>BOTTOM EDGE</li> <li>FRONT FACE (indicated by a red arrow pointing to the front of the antenna)</li> <li>BACK FACE (indicated by a red arrow pointing to the back of the antenna)</li> </ul>
General Setup	
 <p>The photograph shows the general setup for the antenna testing. A green PCB is mounted on a red surface. The setup includes a black metal frame, a white box, and a red cable connected to the antenna. The entire setup is placed on a black table.</p>	

#### F.4 Phantom liquid level during measurements

ELI phantom Body liquid SAR Dasy SPEAG MBBL600-6000V6 Batch -191014-02



**End of the report**

**This page is intentionally left blank and marks the last page of the test report.**