



Test report No.: 2320631R-SAUSV01S-A

SAR Test Report (Class II Permissive Change)

Product Name	Intel WiFi 6 AX201
Trademark	Intel
Model and /or type reference	AX201NGW
Applicant's name / address	ASUSTeK Computer, Inc 1F, No. 15, Lide Rd, Beitou, Taipei, 112 Taiwan
Manufacturer's name	Intel Corporation
FCC ID	MSQAX201NG
Applicable Standard	IEEE 1528-2013 KDB 447498 D01 v06 KDB 865664 D01 v01r04
Measurement procedures	47CFR § 2.1093 KDB 248227 D01 v02r02 KDB 616217 D04 v01r02
Test Result	Max. SAR Measurement (1g) 2.4GHz: 1.009 W/kg 5 GHz: 1.043 W/kg
Verdict Summary	IN COMPLIANCE
Documented By (Senior Project Specialist / Genie Chang)	<i>Genie Chang</i>
Tested By (Senior Engineer / Luke Cheng)	<i>luke cheng</i>
Approved By (Assistant Manager / San Lin)	<i>San Lin</i>
Date of Receipt	2023/02/20
Date of Issue	2023/03/23
Report Version	V1.0

INDEX

Description	Page
1. General Information	5
1.1 EUT Description	5
1.2 Antenna List	6
1.3 SAR Test Exclusion Calculation	7
1.4 Test Environment	10
2. SAR Measurement System	11
2.1 DASY5 System Description	11
2.1.1 Applications	12
2.1.2 Area Scans	12
2.1.3 Zoom Scan (Cube Scan Averaging)	12
2.1.4 Uncertainty of Inter-/Extrapolation and Averaging	12
2.2 DASY5 E-Field Probe	13
2.2.1 Isotropic E-Field Probe Specification	13
2.3 Boundary Detection Unit and Probe Mounting Device	14
2.4 DATA Acquisition Electronics (DAE) and Measurement Server	14
2.5 Robot	15
2.6 Light Beam Unit	15
2.7 Device Holder	16
2.8 SAM Twin Phantom	16
3. Tissue Simulating Liquid	17
3.1 The composition of the tissue simulating liquid	17
3.2 Tissue Calibration Result	17
3.3 Tissue Dielectric Parameters for Head and Head Phantoms	19
4. SAR Measurement Procedure	20
4.1 SAR System Check	20
4.1.1 Dipoles	20
4.1.2 System Check Result	20
4.2 SAR Measurement Procedure	22
5. SAR Exposure Limits	23
6. Test Equipment List	24
7. Measurement Uncertainty	27
8. Conducted Power Measurement (Including tolerance allowed for production unit)	29
9. Test Results	32
9.1 SAR Test Results Summary	32
9.2 Simultaneous Transmission	34
9.2.1 Simultaneous transmission of MIMO in 802.11 test exclusion considerations	34
9.2.2 Simultaneous transmission of Wi-Fi and other wireless technologies	35
10. SAR measurement variability	36
Appendix	37
Appendix A. SAR System Check Data	
Appendix B. SAR measurement Data	
Appendix C. Test Setup Photographs	
Appendix D. Probe Calibration Data	
Appendix E. Dipole Calibration Data	
Appendix F. Product Photos-Please refer to the file: 2320631R-Product Photos	

Competences and Guarantees

DEKRA is a testing laboratory competent to carry out the tests described in this report.

In order to assure the traceability to other national and international laboratories, DEKRA has a calibration and maintenance program for its measurement equipment.

DEKRA guarantees the reliability of the data presented in this report, which is the result of the measurements and the tests performed to the item under test on the date and under the conditions stated in the report and it is based on the knowledge and technical facilities available at DEKRA at the time of performance of the test.

DEKRA is liable to the client for the maintenance of the confidentiality of all information related to the item under test and the results of the test.

The results presented in this Test Report apply only to the particular item under test established in this document.

IMPORTANT: No parts of this report may be reproduced or quoted out of context, in any form or by any means, except in full, without the previous written permission of DEKRA.

General conditions

1. The test results relate only to the samples tested.
2. The test results shown in the test report are traceable to the national/international standard through the calibration report of the equipment and evaluated measurement uncertainty herein.
3. This report must not be used to claim product endorsement by TAF or any agency of the government.
4. The test report shall not be reproduced without the written approval of DEKRA Testing and Certification Co., Ltd.
5. Measurement uncertainties evaluated for each testing system and associated connections are given here to provide the system information for reference. Compliance determinations do not take into account measurement uncertainties for each testing system, but are based on the results of the compliance measurement.

Revision History

Report No.	Version	Description	Issued Date
2320631R-SAUSV01S-A	V1.0	Initial issue of report.	2023/03/23

1. General Information

1.1 EUT Description

Product Name	Intel WiFi 6 AX201		
Trademark	Intel		
Model and /or type reference	AX201NGW		
FCC ID	MSQAX201NG		
Frequency Range	WLAN 2.4GHz: 2412-2472MHz WLAN 5GHz: 5180-5240MHz, 5260-5320MHz, 5500-5720MHz, 5745-5825MHz, 5845-5885MHz BT: 2402-2480MHz		
Type of Modulation	802.11b: DSSS 802.11a/g/n/ac/ax: OFDM, OFDMA GFSK(1Mbps) / π / 4DQPSK(2Mbps) / 8DPSK(3Mbps)		
Antenna Type	PIFA		
Device Category	Portable		
RF Exposure Environment	Uncontrolled		
Summary of test result-Reported 1g SAR (W/Kg)			
Test configuration	DTS	NII	DSS(BT)
Body-Standalone	1.009	1.043	0.305
Body-Simultaneous	DTS (Main + Aux)	NII (Main + Aux)	NII + DSS(BT)
	1.908 (SPLSR= 0.014)	1.639 (SPLSR= 0.011)	1.944 (SPLSR= 0.014)

Note:

Host information			
Brand	Product Name	Model No.	Difference
ASUS	Notebook PC	BR1402CG	Laptop function only.
		BR1402CGA	
		BR1402FG	Laptop with flip function.
		BR1402FGA	
The representative test sample is BR1402FG.			

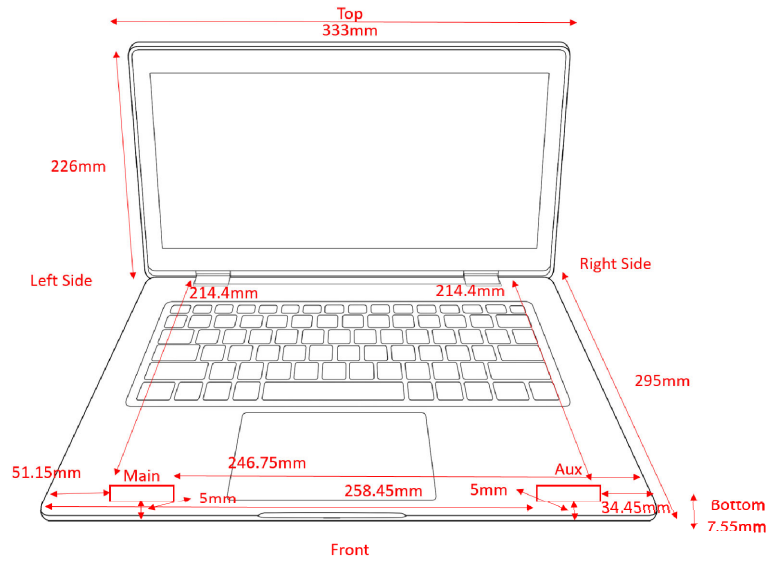
1.2 Antenna List

No.	Manufacturer	Part No.	ASUS Part No.	Antenna Type	Peak Gain
1	INPAQ (NB)	WA-P-LE-02-155 (Main)	14008-05650000 (Main)	PIFA	2.86 dBi for 2400 MHz 3.51 dBi for 5150~5250 MHz 3.52 dBi for 5250~5350 MHz 4.34 dBi for 5470~5725 MHz 4.49 dBi for 5725~5850 MHz 4.31 dBi for 5850~5895 MHz
		WA-P-LE-01-045 (Aux)	14008-05650100 (Aux)		2.91 dBi for 2400 MHz 3.48 dBi for 5150~5250 MHz 3.59 dBi for 5250~5350 MHz 4.42 dBi for 5470~5725 MHz 4.39 dBi for 5725~5850 MHz 4.33 dBi for 5850~5895 MHz
	INPAQ (PAD)	WA-P-LE-02-155 (Main)	14008-05650000 (Main)		2.97 dBi for 2400 MHz 3.53 dBi for 5150~5250 MHz 3.61 dBi for 5250~5350 MHz 4.55 dBi for 5470~5725 MHz 4.55 dBi for 5725~5850 MHz 4.21 dBi for 5850~5895 MHz
		WA-P-LE-01-045 (Aux)	14008-05650100 (Aux)		2.75 dBi for 2400 MHz 3.36 dBi for 5150~5250 MHz 3.70 dBi for 5250~5350 MHz 4.52 dBi for 5470~5725 MHz 4.29 dBi for 5725~5850 MHz 4.29 dBi for 5850~5895 MHz
2	PULSE (NB)	TZ2486D (Main)	14008-05650200 (Main)	PIFA	2.73 dBi for 2400 MHz 3.43 dBi for 5150~5250 MHz 3.43 dBi for 5250~5350 MHz 4.25 dBi for 5470~5725 MHz 4.42 dBi for 5725~5850 MHz 4.21 dBi for 5850~5895 MHz
		TZ2486E (Aux)	14008-05650300 (Aux)		2.84 dBi for 2400 MHz 3.41 dBi for 5150~5250 MHz 3.48 dBi for 5250~5350 MHz 4.23 dBi for 5470~5725 MHz 4.15 dBi for 5725~5850 MHz 4.08 dBi for 5850~5895 MHz
	PULSE (PAD)	TZ2486D (Main)	14008-05650200 (Main)		2.71 dBi for 2400 MHz 3.41 dBi for 5150~5250 MHz 3.45 dBi for 5250~5350 MHz 4.49 dBi for 5470~5725 MHz 4.49 dBi for 5725~5850 MHz 4.15 dBi for 5850~5895 MHz
		TZ2486E (Aux)	14008-05650300 (Aux)		2.60 dBi for 2400 MHz 3.27 dBi for 5150~5250 MHz 3.55 dBi for 5250~5350 MHz 4.37 dBi for 5470~5725 MHz 4.19 dBi for 5725~5850 MHz 4.19 dBi for 5850~5895 MHz

- Note: 1. The above EUT information by host manufacturer.
 2. INPAQ antenna was tested and recorded in this report since it represents worst case gain.
 3. There are the same antenna only difference in Manufacturer.

1.3 SAR Test Exclusion Calculation

According to KDB Publication 616217 D04, SAR evaluation is required for the bottom surface of the laptop keyboard.



PAD Mode SAR exclusion calculations for WiFi-SISO and Bluetooth for antenna < 50mm from the user :

Antenna	Tx	Frequency (MHz)	Output Power		Separation distances (mm)						Calculated Threshold Value (≤ 3.0 SAR is not required)					
			dBm	mW	Back	Right	Left	Top	Bottom		Back	Right	Left	Top	Bottom	
Main	WiFi	2462	15.0	32	5.6	246.75	51.15	5	214.4		8.9	>50mm	>50mm	9.9	>50mm	
Main	WiFi	5240	13.5	22	5.6	246.75	51.15	5	214.4		9.2	>50mm	>50mm	10.2	>50mm	
Main	WiFi	5320	13.5	22	5.6	246.75	51.15	5	214.4		9.2	>50mm	>50mm	10.3	>50mm	
Main	WiFi	5700	13.5	22	5.6	246.75	51.15	5	214.4		9.5	>50mm	>50mm	10.7	>50mm	
Main	WiFi	5825	13.5	22	5.6	246.75	51.15	5	214.4		9.6	>50mm	>50mm	10.8	>50mm	

PAD Mode SAR exclusion calculations for WiFi-SISO and Bluetooth for antenna > 50mm from the user :

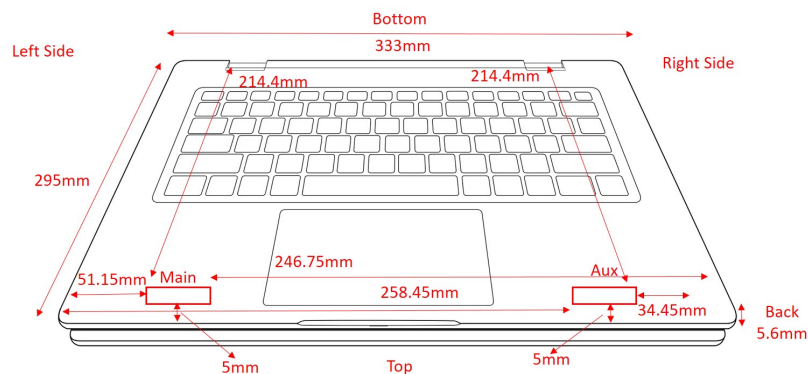
Antenna	Tx	Frequency (MHz)	Output Power		Separation distances (mm)						Calculated Threshold Value (SAR test exclusion power,mW)					
			dBm	mW	Back	Right	Left	Top	Bottom		Back	Right	Left	Top	Bottom	
Main	WiFi	2462	15.0	32	5.6	246.75	51.15	5	214.4		<50mm	2063.1	107.1	<50mm	1739.6	
Main	WiFi	5240	13.5	22	5.6	246.75	51.15	5	214.4		<50mm	2033.0	77.0	<50mm	1709.5	
Main	WiFi	5320	13.5	22	5.6	246.75	51.15	5	214.4		<50mm	2032.5	76.5	<50mm	1709.0	
Main	WiFi	5700	13.5	22	5.6	246.75	51.15	5	214.4		<50mm	2030.3	74.3	<50mm	1706.8	
Main	WiFi	5825	13.5	22	5.6	246.75	51.15	5	214.4		<50mm	2029.7	73.7	<50mm	1706.2	

PAD Mode SAR exclusion calculations for WiFi-SISO and Bluetooth for antenna < 50mm from the user :

Antenna	Tx	Frequency (MHz)	Output Power		Separation distances (mm)						Calculated Threshold Value (≤ 3.0 SAR is not required)					
			dBm	mW	Back	Right	Left	Top	Bottom		Back	Right	Left	Top	Bottom	
Aux	WiFi	2462	15.0	32	5.6	34.45	258.45	5	214.4		8.9	1.4	>50mm	9.9	>50mm	
Aux	WiFi	5240	13.5	22	5.6	34.45	258.45	5	214.4		9.2	1.5	>50mm	10.2	>50mm	
Aux	WiFi	5320	13.5	22	5.6	34.45	258.45	5	214.4		9.2	1.5	>50mm	10.3	>50mm	
Aux	WiFi	5700	13.5	22	5.6	34.45	258.45	5	214.4		9.5	1.6	>50mm	10.7	>50mm	
Aux	WiFi	5825	13.5	22	5.6	34.45	258.45	5	214.4		9.6	1.6	>50mm	10.8	>50mm	
Aux	BT	2480	10.00	10	5.6	34.45	258.45	5	214.4		2.8	0.5	>50mm	3.1	>50mm	

PAD Mode SAR exclusion calculations for WiFi-SISO and Bluetooth for antenna > 50mm from the user :

Antenna	Tx	Frequency (MHz)	Output Power		Separation distances (mm)						Calculated Threshold Value (SAR test exclusion power,mW)					
			dBm	mW	Back	Right	Left	Top	Bottom		Back	Right	Left	Top	Bottom	
Aux	WiFi	2462	15.0	32	5.6	34.45	258.45	5	214.4		<50mm	<50mm	2180.1	<50mm	1739.6	
Aux	WiFi	5240	13.5	22	5.6	34.45	258.45	5	214.4		<50mm	<50mm	2150.0	<50mm	1709.5	
Aux	WiFi	5320	13.5	22	5.6	34.45	258.45	5	214.4		<50mm	<50mm	2149.5	<50mm	1709.0	
Aux	WiFi	5700	13.5	22	5.6	34.45	258.45	5	214.4		<50mm	<50mm	2147.3	<50mm	1706.8	
Aux	WiFi	5825	13.5	22	5.6	34.45	258.45	5	214.4		<50mm	<50mm	2146.7	<50mm	1706.2	
Aux	BT	2480	10.00	10	5.6	34.45	258.45	5	214.4		<50mm	<50mm	2179.8	<50mm	1739.3	



1.4 Test Environment

Ambient conditions in the laboratory:

Test Date: Mar. 02, 2023

Items	Required	Actual
Temperature (°C)	18-25	23.1 ± 2
Humidity (%RH)	30-70	50

Test Date: Mar. 03, 2023

Items	Required	Actual
Temperature (°C)	18-25	22.9 ± 2
Humidity (%RH)	30-70	51

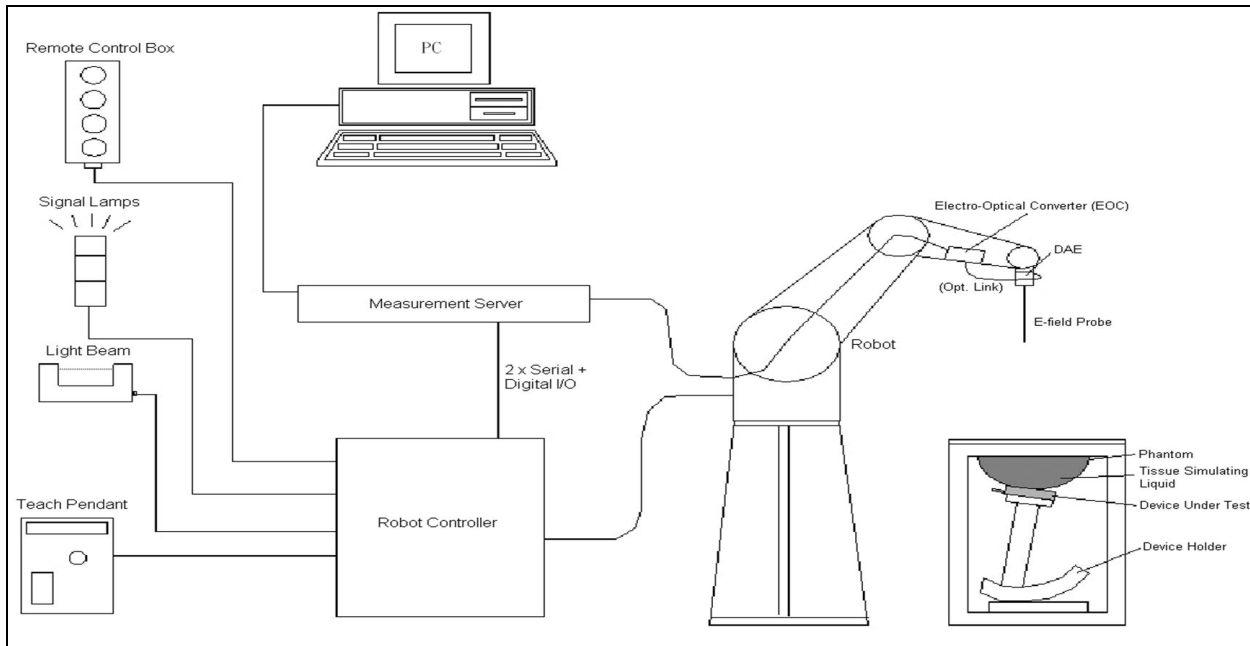
USA	FCC Registration Number: TW0033
Canada	CAB Identifier Number: TW3023 / Company Number: 26930

Site Description	Accredited by TAF
	Accredited Number: 3023

Test Laboratory	DEKRA Testing and Certification Co., Ltd.
	Linkou Laboratory
Address	No.5-22, Ruishukeng Linkou District, New Taipei City, 24451, Taiwan, R.O.C
Performed Location	No. 26, Huaya 1st Rd., Guishan Dist., Taoyuan City 333411, Taiwan, R.O.C.
Phone Number	+886-3-275-7255
Fax Number	+886-3-327-8031

2. SAR Measurement System

2.1 DASY5 System Description



The DASY5 system for performing compliance tests consists of the following items:

- A standard high precision 6-axis robot with controller, teach pendant and software. An arm extension for accommodating the data acquisition electronics (DAE).
- A data acquisition electronics (DAE) which performs the signal amplification, signal multiplexing, AD-conversion, offset measurements, mechanical surface detection, collision detection, etc. The unit is battery powered with standard or rechargeable batteries. The signal is optically transmitted to the EOC.
- The Electro-optical converter (EOC) performs the conversion from optical to electrical signals for the digital communication to the DAE. To use optical surface detection, a special version of the EOC is required. The EOC signal is transmitted to the measurement server.
- The Light Beam used is for probe alignment. This improves the (absolute) accuracy of the probe positioning.
- A computer running WinXP and the DASY5 software.
- Remote control and teach pendant as well as additional circuitry for robot safety such as warning lamps, etc.
- The phantom, the device holder and other accessories according to the targeted measurement.

2.1.1 Applications

Predefined procedures and evaluations for automated compliance testing with all worldwide standards, e.g., IEEE 1528, OET 65, IEC 62209-1, IEC 62209-2, EN 50360, EN 50383 and others.

2.1.2 Area Scans

Area scans are defined prior to the measurement process being executed with a user defined variable spacing between each measurement point (integral) allowing low uncertainty measurements to be conducted. Scans defined for FCC applications utilize a 10mm² step integral, with 1mm interpolation used to locate the peak SAR area used for zoom scan assessments.

When an Area Scan has measured all reachable points, it computes the field maxima found in the scanned area, within a range of the global maximum. The range (in dB) is specified in the standards for compliance testing. For example, a 2 dB range is required in IEEE 1528-2013, EN 50361 and IEC 62209 standards, whereby 3 dB is a requirement when compliance is assessed in accordance with the ARIB standard (Japan).

2.1.3 Zoom Scan (Cube Scan Averaging)

Zoom Scans are used to assess the peak spatial SAR values within a cubic averaging volume containing 1 g and 10 g of simulated tissue. A density of 1000 kg/m³ is used to represent the head and body tissue density and not the phantom liquid density, in order to be consistent with the definition of the liquid dielectric properties, i.e. the side length of the 1 g cube is 10mm, with the side length of the 10 g cube 21,5mm.

The zoom scan integer steps can be user defined so as to reduce uncertainty, but normal practice for typical test applications (including FCC) utilize a physical step of 5x5x7 (8mmx8mmx5mm) providing a volume of 32mm in the X & Y axis, and 30mm in the Z axis.

2.1.4 Uncertainty of Inter-/Extrapolation and Averaging

In order to evaluate the uncertainty of the interpolation, extrapolation and averaged SAR calculation algorithms of the Postprocessor, DASY5 allows the generation of measurement grids which are artificially predefined by analytically based test functions. Therefore, the grids of area scans and zoom scans can be filled with uncertainty test data, according to the SAR benchmark functions of IEEE 1528. The three analytical functions shown in equations as below are used to describe the possible range of the expected SAR distributions for the tested handsets. The field gradients are covered by the spatially flat distribution f1, the spatially steep distribution f3 and f2 accounts for H-field cancellation on the phantom/tissue surface.

$$f_1(x, y, z) = Ae^{-\frac{z}{2a}} \cos^2 \left(\frac{\pi}{2} \frac{\sqrt{x'^2 + y'^2}}{5a} \right)$$

$$f_2(x, y, z) = Ae^{-\frac{z}{a}} \frac{a^2}{a^2 + x'^2} \left(3 - e^{-\frac{2z}{a}} \right) \cos^2 \left(\frac{\pi}{2} \frac{y'}{3a} \right)$$


$$f_3(x, y, z) = A \frac{a^2}{\frac{a^2}{4} + x'^2 + y'^2} \left(e^{-\frac{2z}{a}} + \frac{a^2}{2(a + 2z)^2} \right)$$

2.2 DASY5 E-Field Probe

The SAR measurement is conducted with the dosimetric probe manufactured by SPEAG. The probe is specially designed and calibrated for use in liquid with high permittivity. The dosimetric probe has special calibration in liquid at different frequency.

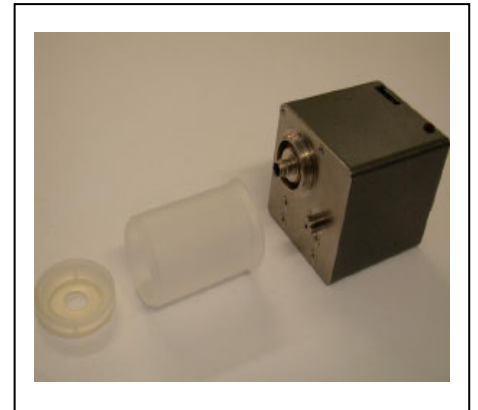
SPEAG conducts the probe calibration in compliance with international and national standards (e.g. IEEE 1528, EN 62209-1, IEC 62209, etc.) under ISO 17025. The calibration data are in Appendix D.

2.2.1 Isotropic E-Field Probe Specification

Model	Ex3DV4	
Construction	Symmetrical design with triangular core Built-in shielding against static charges PEEK enclosure material (resistant to organic solvents, e.g., DGBE)	
Frequency	10 MHz to 6 GHz Linearity: ± 0.2 dB (30 MHz to 6 GHz)	
Directivity	± 0.3 dB in HSL (rotation around probe axis) ± 0.5 dB in tissue material (rotation normal to probe axis)	
Dynamic Range	10 µW/g to 100 mW/g Linearity: ± 0.2 dB (noise: typically < 1 µW/g)	
Dimensions	Overall length: 330 mm (Tip: 20 mm) Tip diameter: 2.5 mm (Body: 12 mm) Typical distance from probe tip to dipole centers: 1 mm	
Application	High precision dosimetric measurements in any exposure scenario (e.g., very strong gradient fields). Only probe which enables compliance testing for frequencies up to 6 GHz with precision of better 30%.	

2.3 Boundary Detection Unit and Probe Mounting Device

The DASY probes use a precise connector and an additional holder for the probe, consisting of a plastic tube and a flexible silicon ring to center the probe. The connector at the DAE is flexibly mounted and held in the default position with magnets and springs. Two switching systems in the connector mount detect frontal and lateral probe collisions and trigger the necessary software response.



2.4 DATA Acquisition Electronics (DAE) and Measurement Server

The data acquisition electronics (DAE) consists of a highly sensitive electrometer-grade preamplifier with auto-zeroing, a channel and gain-switching multiplexer, a fast 16 bit AD-converter and a command decoder and control logic unit. Transmission to the measurement server is accomplished through an optical downlink for data and status information as well as an optical uplink for commands and the clock. The input impedance of the DAE4 is 200M Ohm; the inputs are symmetrical and floating. Common mode rejection is above 80dB.



The DASY5 measurement server is based on a PC/104 CPU board with a 400MHz intel ULV Celeron, 128MB chipdisk and 128MB RAM. The necessary circuits for communication with the DAE electronics box, as well as the 16 bit AD converter system for optical detection and digital I/O interface are contained on the DASY5 I/O board, which is directly connected to the PC/104 bus of the CPU board.



2.5 Robot

The DASY5 system uses the high precision robots TX90 XL type out of the newer series from Stäubli SA (France). For the 6-axis controller DASY5 system, the CS8C robot controller version from Stäubli is used.

The XL robot series have many features that are important for our application:

- High precision (repeatability 0.02 mm)
- High reliability (industrial design)
- Jerk-free straight movements
- Low ELF interference (the closed metallic construction shields against motor control fields)
- 6-axis controller



2.6 Light Beam Unit

The light beam switch allows automatic "tooling" of the probe. During the process, the actual position of the probe tip with respect to the robot arm is measured, as well as the probe length and the horizontal probe offset. The software then corrects all movements, such that the robot coordinates are valid for the probe tip.

The repeatability of this process is better than 0.1 mm. If a position has been taught with an aligned probe, the same position will be reached with another aligned probe within 0.1 mm, even if the other probe has different dimensions. During probe rotations, the probe tip will keep its actual position.



2.7 Device Holder

The DASY5 device holder is designed to cope with different positions given in the standard. It has two scales for the device rotation (with respect to the body axis) and the device inclination (with respect to the line between the ear reference points). The rotation center for both scales is the ear reference point (EPR).

Thus the device needs no repositioning when changing the angles.

The DASY5 device holder has been made out of low-loss POM material having the following dielectric parameters: relative permittivity $\epsilon_r = 3$ and loss tangent $\delta = 0.02$. The amount of dielectric material has been reduced in the closest vicinity of the device, since measurements have suggested that the influence of the clamp on the test results could thus be lowered.



2.8 SAM Twin Phantom

The SAM twin phantom is a fiberglass shell phantom with 2mm shell thickness (except the ear region where shell thickness increases to 6mm). It has three measurement areas:

- Left head
- Right head
- Flat phantom



The bottom plate contains three pair of bolts for locking the device holder. The device holder positions are adjusted to the standard measurement positions in the three sections. A white cover is provided to tap the phantom during off-periods to prevent water evaporation and changes in the liquid parameters. On the phantom top, three reference markers are provided to identify the phantom position with respect to the robot.

3. Tissue Simulating Liquid

3.1 The composition of the tissue simulating liquid

INGREDIENT (% Weight)	2450MHz Head	5GHz Head
Water	46.7	68.29
Salt	0.00	0.00
Sugar	0.00	0.00
HEC	0.00	0.00
Preventol	0.00	0.00
DGBE	53.3	2.44
Triton X-100	0.00	29.27

3.2 Tissue Calibration Result

The dielectric parameters of the liquids were verified prior to the SAR evaluation using Dielectric Probe Kit and Vector Network Analyzer.

Head Tissue Simulate Measurement				
Frequency [MHz]	Description	Dielectric Parameters		Tissue Temp. [°C]
		ϵ_r	σ [s/m]	
2450 MHz	Reference result ± 5% window	39.2 37.24 to 41.16	1.8 1.71 to 1.89	N/A
	02-Mar-23	40.23	1.81	22.3
2412 MHz	Channel 1	40.37	1.75	22.3
2437 MHz	Channel 6	40.27	1.78	22.3
2441 MHz	Channel 39	40.26	1.79	22.3
2462 MHz	Channel 11	40.18	1.81	22.3

Head Tissue Simulate Measurement				
Frequency [MHz]	Description	Dielectric Parameters		Tissue Temp. [°C]
		ϵr	σ [s/m]	
5250 MHz	Reference result $\pm 5\%$ window	35.95 34.15 to 37.75	4.71 4.47 to 4.95	N/A
	03-Mar-23	36.12	4.71	21.8
5210 MHz	Channel 42	36.23	4.65	21.8
5290 MHz	Channel 58	36.01	4.76	21.8

Head Tissue Simulate Measurement				
Frequency [MHz]	Description	Dielectric Parameters		Tissue Temp. [°C]
		ϵr	σ [s/m]	
5600 MHz	Reference result $\pm 5\%$ window	35.5 33.73 to 37.28	5.07 4.82 to 5.32	N/A
	03-Mar-23	35.15	5.18	21.8
5530 MHz	Channel 106	35.34	5.09	21.8
5610 MHz	Channel 122	35.12	5.21	21.8
5690 MHz	Channel 138	34.91	5.31	21.8

Head Tissue Simulate Measurement				
Frequency [MHz]	Description	Dielectric Parameters		Tissue Temp. [°C]
		ϵr	σ [s/m]	
5800 MHz	Reference result $\pm 5\%$ window	35.3 33.54 to 37.07	5.27 5.01 to 5.53	N/A
	03-Mar-23	34.61	5.44	21.8
5775 MHz	Channel 155	34.67	5.41	21.8
5855 MHz	Channel 171	34.46	5.51	21.8

3.3 Tissue Dielectric Parameters for Head and Head Phantoms

The head tissue dielectric parameters recommended by the IEC 62209-1 have been incorporated in the following table. These head parameters are derived from planar layer models simulating the highest expected SAR for the dielectric properties and tissue thickness variations in a human head. Other head tissue parameters that have not been specified are interpolated according to the head parameters specified in IEC 62209-1

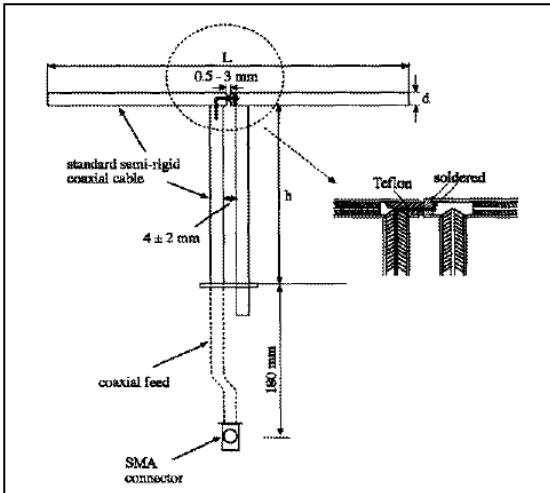
Target Frequency (MHz)	Head	
	ϵ_r	σ (S/m)
300	45.3	0.87
450	43.5	0.87
750	41.9	0.89
835	41.5	0.90
900	41.5	0.97
1450	40.5	1.20
1640	40.2	1.31
1750	40.1	1.37
1800 – 2000	40.0	1.40
2450	39.2	1.80
3000	38.5	2.40
5000	36.2	4.45
5200	36.0	4.66
5400	35.8	4.86
5600	35.3	5.27
5800	35.3	5.27
6000	35.1	5.48

(ϵ_r = relative permittivity, σ = conductivity and $\rho = 1000 \text{ kg/m}^3$)

4. SAR Measurement Procedure

4.1 SAR System Check

4.1.1 Dipoles



The dipoles used is based on the IEEE-1528 standard, and is complied with mechanical and electrical specifications in line with the requirements of both IEEE and FCC Supplement C. the table below provides details for the mechanical and electrical specifications for the dipoles.

Frequency	L (mm)	h (mm)	d (mm)
2450MHz	51.5	30.4	3.6
5200M~5800MHz	20.6	40.3	3.6

4.1.2 System Check Result

System Performance Check at 2450MHz				
Dipole Kit: D2450V2				
Frequency [MHz]	Description	SAR [w/kg] 1g	SAR [w/kg] 10g	Tissue Temp. [°C]
2450 MHz	Reference result ± 10% window	52.4 47.16 to 57.64	24.6 22.14 to 27.06	N/A
	02-Mar-23	55.6	25.4	22.3

Note: (1) The power level is used 250mW
 (2) All SAR values are normalized to 1W forward power.
 (3) The reference result is from Appendix E.

System Performance Check at 5250 MHz				
Dipole Kit: D5GHzV2				
Frequency [MHz]	Description	SAR [w/kg] 1g	SAR [w/kg] 10g	Tissue Temp. [°C]
5250 MHz	Reference result ± 10% window	81.6 73.44 to 89.76	23.2 20.88 to 25.52	N/A
	03-Mar-23	82.3	23	21.8
Note: (1) The power level is used 250mW (2) All SAR values are normalized to 1W forward power. (3) The reference result is from Appendix E.				

System Performance Check at 5600 MHz				
Dipole Kit: D5GHzV2				
Frequency [MHz]	Description	SAR [w/kg] 1g	SAR [w/kg] 10g	Tissue Temp. [°C]
5600 MHz	Reference result ± 10% window	85.9 77.31 to 94.49	24.2 21.78 to 26.62	N/A
	03-Mar-23	84.8	23.6	21.8
Note: (1) The power level is used 250mW (2) All SAR values are normalized to 1W forward power. (3) The reference result is from Appendix E.				

System Performance Check at 5800 MHz				
Dipole Kit: D5GHzV2				
Frequency [MHz]	Description	SAR [w/kg] 1g	SAR [w/kg] 10g	Tissue Temp. [°C]
5800 MHz	Reference result ± 10% window	82.0 73.80 to 90.20	22.8 20.52 to 25.08	N/A
	03-Mar-23	88.4	24.6	21.8
Note: (1) The power level is used 250mW (2) All SAR values are normalized to 1W forward power. (3) The reference result is from Appendix E.				

4.2 SAR Measurement Procedure

The Dasy5 calculates SAR using the following equation,

$$SAR = \frac{\sigma |E|^2}{\rho}$$

σ : represents the simulated tissue conductivity

ρ : represents the tissue density

The EUT is set to transmit at the required power in line with product specification, at each frequency relating to the LOW, MID, and HIGH channel settings.

Pre-scans are made on the device to establish the location for the transmitting antenna, using a large area scan in either air or tissue simulation fluid.

The EUT is placed against the Universal Phantom where the maximum area scan dimensions are larger than the physical size of the resonating antenna. When the scan size is not large enough to cover the peak SAR distribution, it is modified by either extending the area scan size in both the X and Y directions, or the device is shifted within the predefined area.

The area scan is then run to establish the peak SAR location (interpolated resolution set at 1mm²) which is then used to orient the center of the zoom scan. The zoom scan is then executed and the 1g and 10g averages are derived from the zoom scan volume (interpolated resolution set at 1mm³).

5. SAR Exposure Limits

SAR assessments have been made in line with the requirements of IEEE-1528, FCC Supplement C, and comply with ANSI/IEEE C95.1-1992 “Uncontrolled Environments” limits. These limits apply to a location which is deemed as “Uncontrolled Environment” which can be described as a situation where the general public may be exposed to an RF source with no prior knowledge or control over their exposure.

Limits for General Population/Uncontrolled Exposure (W/kg)

Type Exposure	Uncontrolled Environment Limit
Spatial Peak SAR (1g cube tissue for brain or body)	1.60 W/kg
Spatial Average SAR (whole body)	0.08 W/kg
Spatial Peak SAR (10g for hands, feet, ankles and wrist)	4.00 W/kg

6. Test Equipment List

Instrument	Manufacturer	Model No.	Serial No.	Last Calibration	Next Calibration
Reference Dipole 2450MHz	Speag	D2450V2	930	2022/11/21	2025/11/20
Reference Dipole 5GHz	Speag	D5GHzV2	1041	2020/05/25	2023/05/24
Device Holder	Speag	N/A	N/A	N/A	N/A
Data Acquisition Electronic	Speag	DAE4	1425	2022/11/23	2023/11/22
E-Field Probe	Speag	EX3DV4	3979	2022/11/23	2023/11/22
SAR Software	Speag	DASY52	V52.10.0.1446	N/A	N/A
Power Amplifier	Mini-Circuit	ZVE-8G+	447202211	N/A	N/A
Directional Coupler	Agilent	87300C	MY44300353	N/A	N/A ¹
Attenuator	Woken	WATT-218FS-10	N/A	N/A	N/A ¹
Attenuator	Mini-Circuit	BW-S20W2+	N/A	N/A	N/A ¹
Vector Network Analyzer	Keysight	E5071C	MY46106342	2022/10/21	2023/10/20
Signal Generator	Anritsu	MG3694A	041902	2022/08/30	2023/08/29
Power Meter	Anritsu	ML2487A	6K00001447	2022/10/31	2023/10/30
Power Sensor	Anritsu	MA2411B	1339194	2022/10/31	2023/10/30

Note: 1. System Check, the path loss measured by the network analyzer, includes the signal generator, amplifier, cable, attenuator and directional coupler.

Note:

Per KDB 865664 D01 requirements for dipole calibration, the following are recommended FCC procedures for SAR dipole calibration.

1. After a dipole is damaged and properly repaired to meet required specifications.
2. When the measured SAR deviates from the calibrated SAR value by more than 10% due to changes in physical, mechanical, electrical or other relevant dipole conditions.
3. When the most recent return-loss, measured at least annually, deviates by more than 20% from the previous measurement (i.e. 0.2 of the dB value) or not meeting the required -20 dB return-loss specification.

	Frequency	Tissue	Return loss	Limit	Verified Date
Calibration	5250 MHz	Head	-26.86dB	Within 20%	2020.05.25
Measurement	5250 MHz	Head	-24.16dB		2021.05.18
Measurement	5250 MHz	Head	-25.46dB		2022.05.17

	Frequency	Tissue	Return loss	Limit	Verified Date
Calibration	5600 MHz	Head	-24.43dB	Within 20%	2020.05.25
Measurement	5600 MHz	Head	-27.05dB		2021.05.18
Measurement	5600 MHz	Head	-24.46dB		2022.05.17

	Frequency	Tissue	Return loss	Limit	Verified Date
Calibration	5800 MHz	Head	-26.80dB	Within 20%	2020.05.25
Measurement	5800 MHz	Head	-25.64dB		2021.05.18
Measurement	5800 MHz	Head	-24.88dB		2022.05.17

4. When the most recent measurement of the real or imaginary parts of the impedance, measured at least annually, deviates by more than 5 Ω from the previous measurement.

	Frequency	Tissue	Impedance	Limit	Verified Date
Calibration	5250 MHz	Head	49.04	Within 5 Ω	2020.05.25
Measurement	5250 MHz	Head	45.54		2021.05.18
Measurement	5250 MHz	Head	50.45		2022.05.17

	Frequency	Tissue	Impedance	Limit	Verified Date
Calibration	5600 MHz	Head	56.26	Within 5 Ω	2020.05.25
Measurement	5600 MHz	Head	52.24		2021.05.18
Measurement	5600 MHz	Head	55.41		2022.05.17

	Frequency	Tissue	Impedance	Limit	Verified Date
Calibration	5800 MHz	Head	54.28	Within 5 Ω	2020.05.25
Measurement	5800 MHz	Head	49.85		2021.05.18
Measurement	5800 MHz	Head	56.96		2022.05.17

7. Measurement Uncertainty

Measurement uncertainty for 30 MHz to 3 GHz								
Error Description	Uncert. value	Prob. Dist.	Div.	(ci) 1g	(ci) 10g	Std. Unc. (1g)	Std. Unc. (10g)	(vi) V _{eff}
Measurement System								
Probe Calibration	±6%	N	1	1	1	±6.0%	±6.0%	∞
Axial Isotropy	±4.7%	R	$\sqrt{3}$	0.7	0.7	±1.9%	±1.9%	∞
Hemispherical Isotropy	±9.6%	R	$\sqrt{3}$	0.7	0.7	±3.9%	±3.9%	∞
Boundary Effects	±1.0%	R	$\sqrt{3}$	1	1	±0.6%	±0.6%	∞
Linearity	±4.7%	R	$\sqrt{3}$	1	1	±2.7%	±2.7%	∞
System Detection Limits	±1.0%	R	$\sqrt{3}$	1	1	±0.6%	±0.6%	∞
Modulation Response	±2.4%	R	$\sqrt{3}$	1	1	±1.4%	±1.4%	∞
Readout Electronics	±0.3%	N	1	1	1	±0.3%	±0.3%	∞
Response Time	±0.8%	R	$\sqrt{3}$	1	1	±0.5%	±0.5%	∞
Integration Time	±2.6%	R	$\sqrt{3}$	1	1	±1.5%	±1.5%	∞
RF Ambient Noise	±3.0%	R	$\sqrt{3}$	1	1	±1.7%	±1.7%	∞
RF Ambient Reflections	±3.0%	R	$\sqrt{3}$	1	1	±1.7%	±1.7%	∞
Probe Positioner	±0.4%	R	$\sqrt{3}$	1	1	±0.2%	±0.2%	∞
Probe Positioning	±2.9%	R	$\sqrt{3}$	1	1	±1.7%	±1.7%	∞
Max. SAR Eval.	±4.0%	R	$\sqrt{3}$	1	1	±1.2%	±1.2%	∞
Test Sample Related								
Device Positioning	±2.9%	N	1	1	1	±2.9%	±2.9%	145
Device Holder	±3.6%	N	1	1	1	±3.6%	±3.6%	5
Power Drift	±5.0%	R	$\sqrt{3}$	1	1	±2.9%	±2.9%	∞
Power Scaling	±0%	R	$\sqrt{3}$	1	1	±0.0%	±0.0%	
Phantom and Setup								
Phantom Uncertainty	±6.1%	R	$\sqrt{3}$	1	1	±3.5%	±3.5%	∞
SAR correction	±1.9%	R	$\sqrt{3}$	1	0.84	±1.1%	±0.9%	∞
Liquid Conductivity (meas.)	±2.5%	R	$\sqrt{3}$	0.78	0.71	±1.1%	±1.0%	∞
Liquid Permittivity (meas.)	±2.5%	R	$\sqrt{3}$	0.26	0.26	±0.3%	±0.4%	∞
Temp. unc. - Conductivity	±3.4%	R	$\sqrt{3}$	0.78	0.71	±1.5%	±1.4%	∞
Temp. unc. - Permittivity	±0.4%	R	$\sqrt{3}$	0.23	0.26	±0.1%	±0.1%	∞
Combined Std. Uncertainty						±11.2%	±11.1%	361
Expanded STD Uncertainty						±22.3%	±22.2%	

Measurement uncertainty for 3GHz to 6 GHz								
Error Description	Uncert. value	Prob. Dist.	Div.	(ci) 1g	(ci) 10g	Std. Unc. (1g)	Std. Unc. (10g)	(vi) V _{eff}
Measurement System								
Probe Calibration	±6.55%	N	1	1	1	±6.55%	±6.55%	∞
Axial Isotropy	±4.7%	R	√3	0.7	0.7	±1.9%	±1.9%	∞
Hemispherical Isotropy	±9.6%	R	√3	0.7	0.7	±3.9%	±3.9%	∞
Boundary Effects	±2.0%	R	√3	1	1	±1.2%	±1.2%	∞
Linearity	±4.7%	R	√3	1	1	±2.7%	±2.7%	∞
System Detection Limits	±1.0%	R	√3	1	1	±0.6%	±0.6%	∞
Modulation Response	±2.4%	R	√3	1	1	±1.4%	±1.4%	∞
Readout Electronics	±0.3%	N	1	1	1	±0.3%	±0.3%	∞
Response Time	±0.8%	R	√3	1	1	±0.5%	±0.5%	∞
Integration Time	±2.6%	R	√3	1	1	±1.5%	±1.5%	∞
RF Ambient Noise	±3.0%	R	√3	1	1	±1.7%	±1.7%	∞
RF Ambient Reflections	±3.0%	R	√3	1	1	±1.7%	±1.7%	∞
Probe Positioner	±0.8%	R	√3	1	1	±0.5%	±0.5%	∞
Probe Positioning	±6.7%	R	√3	1	1	±3.9%	±3.9%	∞
Post-processing	±4.0%	R	√3	1	1	±2.3%	±2.3%	∞
Test Sample Related								
Device Positioning	±2.9%	N	1	1	1	±2.9%	±2.9%	145
Device Holder	±3.6%	N	1	1	1	±3.6%	±3.6%	5
Power Drift	±5.0%	R	√3	1	1	±2.9%	±2.9%	∞
Power Scaling	±0%	R	√3	1	1	±0.0%	±0.0%	
Phantom and Setup								
Phantom Uncertainty	±6.6%	R	√3	1	1	±3.8%	±3.8%	∞
SAR correction	±1.9%	R	√3	1	1	±1.1%	±0.9%	∞
Liquid Conductivity (meas.)	±2.5%	R	√3	1	0.84	±1.1%	±1.0%	∞
Liquid Permittivity (meas.)	±2.5%	R	√3	0.26	0.26	±0.3%	±0.4%	∞
Temp. unc. - Conductivity	±3.4%	R	√3	0.78	0.71	±1.5%	±1.4%	∞
Temp. unc. - Permittivity	±0.4%	R	√3	0.23	0.26	±0.1%	±0.1%	∞
Combined Std. Uncertainty						±12.3%	±12.2%	748
Expanded STD Uncertainty						±24.6%	±24.5%	

8. Conducted Power Measurement (Including tolerance allowed for production unit)

WLAN 2.4G 2TX SISO									
	Frequency	Mode	BW	SISO-Main(TX1) Chain B			SISO-Aux(TX2) Chain A		
				CH	AV Power	AV Target	CH	AV Power	AV Target
DSSS/OFDM mode specified maximum output power at an antenna port	WLAN 2.4GHz	b	20	1	14.83	15	1	14.83	15
				6	14.97	15	6	14.98	15
				11	14.82	15	11	14.91	15
				12	14.75	15	12	14.74	15
				13	14.73	15	13	14.71	15
		g	20	1	14.45	15	1	14.72	15
				6	14.36	15	6	14.67	15
				11	14.55	15	11	14.68	15
				12	14.23	15	12	14.45	15
				13	1.39	2	13	1.36	1.5
		n (HT)	20	1	14.36	15	1	14.66	15
				6	14.42	15	6	14.61	15
				11	14.49	15	11	14.62	15
				12	14.21	15	12	14.29	15
				13	1.38	2	13	1.36	1.5
			40	3	14.64	15	3	14.63	15
				6	14.72	15	6	14.59	15
				9	14.81	15	9	14.62	15
				10	12.16	12.25	10	11.82	12
				11	4.85	5	11	4.79	5
		ax (HE)	20	1	14.45	15	1	14.49	15
				6	14.63	15	6	14.56	15
				11	14.41	15	11	14.57	15
				12	14.25	15	12	14.29	15
				13	1.49	2	13	1.44	1.5
40	3		14.48	15	3	14.51	15		
	6		14.61	15	6	14.65	15		
	9		14.51	15	9	14.56	15		
	10		12.04	12.25	10	11.62	12		
	11		4.92	5.5	11	4.12	4.5		

WLAN 5G 2TX SISO																					
OFDM mode specified maximum output power at an antenna port	Frequency	Mode	BW	SISO-Main(TX1) Chain B			SISO-Aux(TX2) Chain A			Frequency	Mode	BW	SISO-Main(TX1) Chain B			SISO-Aux(TX2) Chain A					
				CH	AV Power	AV Target	CH	AV Power	AV Target				CH	AV Power	AV Target	CH	AV Power	AV Target			
OFDM mode specified maximum output power at an antenna port	U-NII-1 (5150~5250MHz)	a	20	36	13.13	13.5	36	13.06	13.5	U-NII-2A (5250~5350MHz)	a	20	52	12.99	13.5	52	13.12	13.5			
				40	13.08	13.5	40	13.08	13.5				56	13.04	13.5	56	13.13	13.5			
				44	13.14	13.5	44	13.03	13.5				60	12.98	13.5	60	13.13	13.5			
				48	13.07	13.5	48	13.07	13.5				64	13.01	13.5	64	13.07	13.5			
		n (HT)	20	36	13.05	13.5	36	13.05	13.5		n (HT)	20	52	13.07	13.5	52	13.15	13.5			
				40	13.07	13.5	40	13.08	13.5				56	13.15	13.5	56	13.12	13.5			
				44	13.14	13.5	44	13.14	13.5				60	13.05	13.5	60	13.07	13.5			
				48	13.06	13.5	48	13.04	13.5				64	13.11	13.5	64	12.98	13.5			
		40	38	13.08	13.5	38	13.04	13.5	40		54	13.06	13.5	54	13.15	13.5					
			46	13.07	13.5	46	13.14	13.5			62	12.99	13.5	62	13.01	13.5					
		ac(VHT)	80	42	13.36	13.5	42	13.41	13.5		ac (VHT)	80	58	13.47	13.5	58	13.48	13.5			
				20	36	13.07	13.5	36	13.11				13.5	20	52	13.15	13.5	52	13.14	13.5	
	40				13.04	13.5	40	13.13	13.5	56			13.14		13.5	56	13.08	13.5			
	44				13.14	13.5	44	13.15	13.5	60			13.11		13.5	60	13.07	13.5			
	48				13.15	13.5	48	13.02	13.5	64			13.01		13.5	64	13.02	13.5			
	40			38	13.05	13.5	38	12.93	13.5	40			54	13.11	13.5	54	13.04	13.5			
				46	13.09	13.5	46	12.97	13.5				62	13.09	13.5	62	12.96	13.5			
				80	42	13.13	13.5	42	13.14				13.5	80	58	13.07	13.5	58	13.12	13.5	
		112	13.06		13.5	112	13.01	13.5	160		50	13.11	13.5		50	13.13	13.5				
	OFDM mode specified maximum output power at an antenna port	U-NII-2C (5470~5725MHz)	a	20	100	13.08	13.5	100	13.12	13.5	U-NII-3 (5725~5850MHz)	a	20	149	13.07	13.5	149	13.02	13.5		
					112	13.06	13.5	112	13.01	13.5				157	12.92	13.5	157	13.08	13.5		
					116	12.98	13.5	116	12.97	13.5				165	13.12	13.5	165	13.29	13.5		
					128	13.06	13.5	128	12.99	13.5				n (HT)	20	149	13.14	13.5	149	13.06	13.5
					132	13.01	13.5	132	13.05	13.5						157	13.09	13.5	157	12.99	13.5
n (HT)			20	100	13.03	13.5	100	13.06	13.5	40		165	13.08			13.5	165	13.16	13.5		
				112	12.96	13.5	112	13.04	13.5			151	13.12			13.5	151	13.06	13.5		
				116	12.99	13.5	116	13.09	13.5			159	13.07			13.5	159	13.04	13.5		
40			128	13.16	13.5	128	13.06	13.5	ac(VHT)	80		155	13.39	13.5	155	13.41	13.5				
			132	13.17	13.5	132	13.11	13.5				20	149	13.02	13.5	149	13.14	13.5			
			102	13.05	13.5	102	13.09	13.5					157	13.14	13.5	157	13.09	13.5			
			110	13.04	13.5	110	13.06	13.5					165	13.02	13.5	165	13.12	13.5			
		118	13.01	13.5	118	12.95	13.5	151			13.02		13.5	151	13.02	13.5					
126		13.09	13.5	126	13.11	13.5	159	13.09	13.5	159	13.03		13.5								
ac (VHT)		80	134	13.07	13.5	134	13.03	13.5	80	138	13.11	13.5	138	13.12	13.5						
			20	144	13.11	13.5	144	13.10		13.5	155	13.03	13.5	155	13.11	13.5					
			40	142	13.05	13.5	142	13.14		13.5	169	12.96	13.5	169	13.01	13.5					
			20	138	13.35	13.5	138	13.32		13.5	20	173	12.98	13.5	173	13.04	13.5				
				106	13.34	13.5	106	13.33		13.5		177	12.89	13.5	177	12.93	13.5				
				122	13.36	13.5	122	13.43		13.5		n (HT)	20	169	12.97	13.5	169	12.97	13.5		
				160	114	13.06	13.5	114		13.13				13.5	173	13.02	13.5	173	13.05	13.5	
			100	13.12	13.5	100	12.99	13.5		177	12.91			13.5	177	12.95	13.5				
112		13.02	13.5	112	13.09	13.5	40	167	13.05	13.5	167			13.03	13.5						
116		13.08	13.5	116	13.07	13.5		175	12.95	13.5	175	13.07	13.5								
128	13.05	13.5	128	12.97	13.5	ac(VHT)		80	171	13.36	13.5	171	13.34	13.5							
132	13.01	13.5	132	13.13	13.5				20	169	13.12	13.5	169	13.14	13.5						
144	13.14	13.5	144	13.13	13.5		173			13.05	13.5	173	13.12	13.5							
ax (HE)	40	102	13.11	13.5	102		12.98			13.5	40	177	13.19	13.5	177	12.96	13.5				
		110	13.04	13.5	110	12.98	13.5	175		13.12		13.5	175	13.01	13.5						
		118	13.08	13.5	118	13.02	13.5	80	171	13.08		13.5	171	13.05	13.5						
		126	13.03	13.5	126	12.96	13.5		163	12.98		13.5	163	13.09	13.5						
	134	13.06	13.5	134	13.01	13.5	160		169	13.12	13.5	169	13.14	13.5							
	142	13.08	13.5	142	13.17	13.5			173	13.05	13.5	173	13.12	13.5							
	106	13.13	13.5	106	13.07	13.5		177	13.04	13.5	177	13.03	13.5								
	122	13.06	13.5	122	13.09	13.5		175	13.12	13.5	175	13.01	13.5								
80	106	13.13	13.5	106	13.07	13.5	160	171	13.08	13.5	171	13.05	13.5								
	122	13.06	13.5	122	13.09	13.5		163	12.98	13.5	163	13.09	13.5								
160	114	13.03	13.5	114	13.12	13.5	160	163	12.98	13.5	163	13.09	13.5								

BT Only Support Aux						
Bluetooth mode maximum output power	Frequency	Mode	Modulation	SISO-Aux(TX2)		
				Chain A		
				CH	AV Power	AV Target
BT 2.4GHz	BR	GFSK	0	8.56	10.0	
			39	9.01	10.0	
			78	8.92	10.0	
	EDR	8DPSK	0	6.92	7.0	
			39	6.69	7.0	
			78	6.85	7.0	
	BLE	GFSK	0	6.74	7.0	
			19	6.62	7.0	
			39	6.66	7.0	

9. Test Results

9.1 SAR Test Results Summary

SAR MEASUREMENT								
Liquid Temperature (°C) : 22.3 ± 2					Relative Humidity (%) : 50			
Ambient Temperature (°C) : 23.1 ± 2					Depth of Liquid (cm) : >15			
Test Position	Dist (mm)	Frequency		Conducted Power (dBm)		SAR 1g (W/kg)		Plot No.
		Channel	MHz	Measurement	Tune-up Limit	Measurement	Tune-up Scaled	
Test Mode : 802.11b (AX201NWX) – INPAQ – Main								
Bottom(NB)	0	1	2412	14.83	15	0.941	1.009	1
Bottom(NB)	0	6	2437	14.97	15	0.919	0.954	
Bottom(NB)	0	11	2462	14.82	15	0.934	1.004	
Back(PAD)	0	6	2437	14.97	15	0.615	0.638	
Top(PAD)	0	6	2437	14.97	15	0.167	0.173	
Test Mode : 802.11b (AX201NWX) – INPAQ – Aux								
Bottom(NB)	0	1	2412	14.83	15	0.833	0.893	
Bottom(NB)	0	6	2437	14.98	15	0.842	0.872	
Bottom(NB)	0	11	2462	14.91	15	0.854	0.899	
Back(PAD)	0	6	2437	14.98	15	0.531	0.550	
Top(PAD)	0	6	2437	14.98	15	0.144	0.149	
Test Mode : BT_1M (AX201NWX) – INPAQ – Aux								
Bottom(NB)	0	39	2441	9.01	10	0.187	0.305	2
Test Mode : 802.11b (AX201NWX) – PULSE – Main								
Bottom(NB)	0	1	2412	14.83	15	0.774	0.830	
Bottom(NB)	0	6	2437	14.97	15	0.866	0.899	
Bottom(NB)	0	11	2462	14.82	15	0.910	0.978	
Test Mode : 802.11b (AX201NWX) – PULSE – Aux								
Bottom(NB)	0	1	2412	14.83	15	0.715	0.767	
Bottom(NB)	0	6	2437	14.98	15	0.837	0.867	
Bottom(NB)	0	11	2462	14.91	15	0.823	0.866	
Note: 1. When the highest reported SAR for DSSS is adjusted by the ratio of OFDM to DSSS specified maximum output power and the adjusted SAR is ≤ 1.2 W/kg, SAR is not required. 2. When the reported SAR of the highest measured maximum output power channel for the exposure configuration is ≤ 0.8 W/kg, no further SAR testing is required for 802.11b DSSS in that exposure configuration.								

SAR MEASUREMENT								
Liquid Temperature (°C) : 21.8 ±2					Relative Humidity (%) : 51			
Ambient Temperature (°C) : 22.9 ±2					Depth of Liquid (cm) : >15			
Test Position	Dist (mm)	Frequency		Conducted Power (dBm)		SAR 1g (W/kg)		Plot No.
		Channel	MHz	Measurement	Tune-up Limit	Measurement	Tune-up Scaled	
Test Mode : 802.11ac80M (AX201NGW) – INPAQ – Main								
Bottom(NB)	0	58	5290	13.47	13.5	0.791	0.804	
Bottom(NB)	0	106	5530	13.34	13.5	0.796	0.834	
Bottom(NB)	0	122	5610	13.36	13.5	0.838	0.874	
Bottom(NB)	0	138	5690	13.35	13.5	0.880	0.920	
Bottom(NB)	0	155	5775	13.39	13.5	0.764	0.791	
Bottom(NB)	0	171	5855	13.36	13.5	0.644	0.672	
Back(PAD)	0	42	5210	13.36	13.5	0.933	0.973	
Back(PAD)	0	58	5290	13.47	13.5	0.978	0.995	3
Back(PAD)	0	106	5530	13.34	13.5	0.944	0.989	
Back(PAD)	0	122	5610	13.36	13.5	1.000	1.043	4
Back(PAD)	0	138	5690	13.35	13.5	0.993	1.038	
Back(PAD)	0	155	5775	13.39	13.5	0.868	0.899	5
Back(PAD)	0	171	5855	13.36	13.5	0.757	0.790	6
Top(PAD)	0	58	5290	13.47	13.5	0.791	0.804	
Top(PAD)	0	122	5610	13.36	13.5	0.660	0.688	
Top(PAD)	0	155	5775	13.39	13.5	0.571	0.592	
Top(PAD)	0	171	5855	13.36	13.5	0.468	0.488	
Test Mode : 802.11ac80M (AX201NGW) – INPAQ – Aux								
Bottom(NB)	0	58	5290	13.48	13.5	0.490	0.497	
Bottom(NB)	0	122	5610	13.43	13.5	0.453	0.465	
Bottom(NB)	0	155	5775	13.41	13.5	0.454	0.468	
Bottom(NB)	0	171	5855	13.34	13.5	0.514	0.539	
Back(PAD)	0	58	5290	13.48	13.5	0.536	0.544	
Back(PAD)	0	122	5610	13.43	13.5	0.471	0.483	
Back(PAD)	0	155	5775	13.41	13.5	0.481	0.496	
Back(PAD)	0	171	5855	13.34	13.5	0.569	0.596	
Top(PAD)	0	58	5290	13.48	13.5	0.439	0.445	
Top(PAD)	0	122	5610	13.43	13.5	0.410	0.421	
Top(PAD)	0	155	5775	13.41	13.5	0.389	0.401	
Top(PAD)	0	171	5855	13.34	13.5	0.426	0.446	
Test Mode : 802.11ac80M (AX201NGW) – PULSE – Main								
Bottom(NB)	0	58	5290	13.47	13.5	0.690	0.702	
Bottom(NB)	0	106	5530	13.34	13.5	0.770	0.807	
Bottom(NB)	0	122	5610	13.36	13.5	0.808	0.843	
Bottom(NB)	0	138	5690	13.35	13.5	0.733	0.766	
Back(PAD)	0	42	5210	13.36	13.5	0.807	0.842	
Back(PAD)	0	58	5290	13.47	13.5	0.852	0.866	
Back(PAD)	0	106	5530	13.34	13.5	0.847	0.888	
Back(PAD)	0	122	5610	13.36	13.5	0.623	0.650	
Back(PAD)	0	138	5690	13.35	13.5	0.595	0.622	
Back(PAD)	0	155	5775	13.39	13.5	0.842	0.872	
Top(PAD)	0	58	5290	13.47	13.5	0.620	0.631	
Note: 1. When multiple transmission modes (802.11 n) have the same specified maximum output power, largest channel bandwidth, lowest order modulation and lowest data rate, the lowest order 802.11 mode is selected								
2. When the reported SAR of the highest measured maximum output power channel for the exposure configuration is ≤ 0.8 W/kg, no further SAR testing is required in that exposure configuration.								

9.2 Simultaneous Transmission

Simultaneous Transmission Configurations	
1	WLAN 2.4GHz Main + BT Aux
2	WLAN 2.4GHz Main + WLAN 2.4GHz Aux
3	WLAN 5GHz Main + BT Aux
4	WLAN 5GHz Main + WLAN 5GHz Aux
5	WLAN 5GHz Main + WLAN 5GHz Aux + BT Aux

9.2.1 Simultaneous transmission of MIMO in 802.11 test exclusion considerations

Frequency (GHz)	Test Position	WLAN Main SAR (W/Kg)	WLAN Aux SAR (W/Kg)	Simultaneous Transmission (W/Kg)	Antenna pair in mm	Peak location separation ratio
2.4	Bottom(NB)	1.009	0.899	1.908	192.83	0.014
2.4	Back(PAD)	0.638	0.550	1.188	N/A	N/A
2.4	Top(PAD)	0.173	0.149	0.322	N/A	N/A
5	Bottom(NB)	0.920	0.539	1.459	N/A	N/A
5	Back(PAD)	1.043	0.596	1.639	195.66	0.011
5	Top(PAD)	0.804	0.446	1.250	N/A	N/A

Note: The sum of value is less than 1.6W/kg or the ratio is determined by $(SAR1 + SAR2)1.5/R_i$, rounded to two decimal digits, and must be ≤ 0.04 for all antenna pairs in the configuration to qualify for SAR test exclusion.

9.2.2 Simultaneous transmission of Wi-Fi and other wireless technologies

When the sum of SAR is larger than the limit, The ratio is determined by $(SAR1 + SAR2)^{1.5}/R_i$, rounded to two decimal digits, and must be ≤ 0.04 for all antenna pairs in the configuration to qualify for 1-g SAR test exclusion. The estimation result as below:

For DTS Band:

Mode	WLAN Main SAR (W/kg)	BT SAR (W/kg)	Simultaneous Transmission (W/kg)	Antenna pair in mm	Peak location separation ratio
Bottom(NB)	1.009	0.305	1.314	N/A	N/A
Back(PAD)	0.638	0.305	0.943	N/A	N/A
Top(PAD)	0.173	0.305	0.478	N/A	N/A

The sum of value is less than 1.6W/kg, thus simultaneous SAR testing is not needed.

For U-NII Band:

Mode	WLAN Main SAR (W/kg)	BT SAR (W/kg)	Simultaneous Transmission (W/kg)	Antenna pair in mm	Peak location separation ratio
Bottom(NB)	0.920	0.305	1.225	N/A	N/A
Back(PAD)	1.043	0.305	1.348	N/A	N/A
Top(PAD)	0.804	0.305	1.109	N/A	N/A

The sum of value is less than 1.6W/kg, thus simultaneous SAR testing is not needed.

Mode	WLAN Main SAR (W/kg)	WLAN Aux SAR (W/kg)	BT SAR (W/kg)	Simultaneous Transmission (W/kg)	Antenna pair in mm	Peak location separation ratio
Bottom(NB)	0.920	0.539	0.305	1.764	189.40	0.012
Back(PAD)	1.043	0.596	0.305	1.944	195.66	0.014
Top(PAD)	0.804	0.446	0.305	1.555	N/A	N/A

The ratio of value is less than 0.04, thus simultaneous SAR testing is not needed.

10. SAR measurement variability

- 1) Repeated measurement is not required when the original highest measured SAR is < 0.80 W/kg; steps 2) through 4) do not apply.
- 2) When the original highest measured SAR is ≥ 0.80 W/kg, repeat that measurement once.
- 3) Perform a second repeated measurement only if the ratio of largest to smallest SAR for the original and first repeated measurements is > 1.20 or when the original or repeated measurement is ≥ 1.45 W/kg (~ 10% from the 1-g SAR limit).
- 4) Perform a third repeated measurement only if the original, first or second repeated measurement is ≥ 1.5 W/kg and the ratio of largest to smallest SAR for the original, first and second repeated measurements is > 1.20.

Frequency		SAR 1g (W/kg)						
Channel	MHz	Original	First Repeated		Second Repeated		Third Repeated	
			Value	Ratio	Value	Ratio	Value	Ratio
01	2412	0.941	0.935	1.006	N/A	N/A	N/A	N/A
122	5610	1.000	0.982	1.018	N/A	N/A	N/A	N/A

Appendix

Appendix A. SAR System Check Data

Appendix B. SAR measurement Data

Appendix C. Test Setup Photographs

Appendix D. Probe Calibration Data

Appendix E. Dipole Calibration Data

Appendix F. Product Photos-Please refer to the file: 2320631R-Product Photos

Appendix A. SAR System Check Data

Test Laboratory: DEKRA

Date: 2023/03/02

System Performance Check_2450MHz-Head

DUT: Dipole 2450 MHz; Type: D2450V2

Communication System: UID 10000, CW; Frequency: 2450 MHz;

Communication System PAR: 0 dB

Medium parameters used: $f = 2450$ MHz; $\sigma = 1.81$ S/m; $\epsilon_r = 40.23$; $\rho = 1000$ kg/m³

Phantom section: Flat Section

Ambient Temperature (°C) : 23.1, Liquid Temperature (°C) : 22.3

Measurement Standard: DASY5 (IEEE/IEC/ANSI C63.19-2011)

DASY5 Configuration:

- Probe: EX3DV4 - SN3979; ConvF(7.58, 7.58, 7.58); Calibrated: 2022/11/23;
- Sensor-Surface: 1.4mm (Mechanical Surface Detection)
- Electronics: DAE4 Sn1425; Calibrated: 2022/11/23
- Phantom: SAM with left table; Type: SAM;
- Measurement SW: DASY52, Version 52.10 (0); SEMCAD X Version 14.6.10 (7417)

Configuration/2450MHz-Head/Area Scan (8x9x1): Measurement grid: dx=12mm, dy=12mm

Maximum value of SAR (measured) = 21.7 W/kg

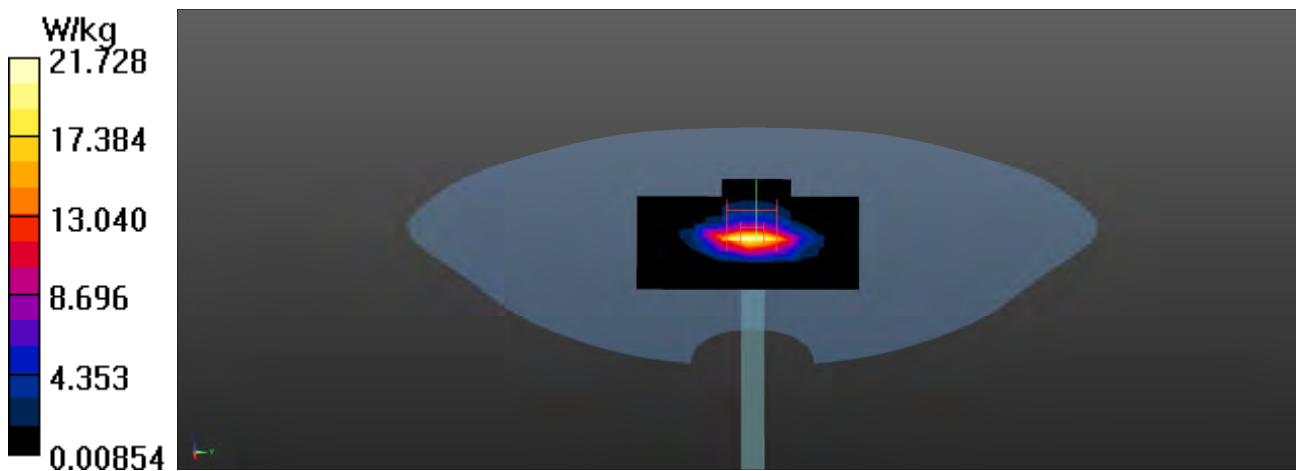
Configuration/2450MHz-Head/Zoom Scan (7x7x7)/Cube 0: Measurement grid: dx=5mm, dy=5mm, dz=5mm

Reference Value = 118.1 V/m; Power Drift = 0.12 dB

Peak SAR (extrapolated) = 26.8 W/kg

SAR(1 g) = 13.9 W/kg; SAR(10 g) = 6.35 W/kg

Maximum value of SAR (measured) = 23.4 W/kg



Test Laboratory: DEKRA

Date: 2023/03/03

System Performance Check_5250MHz-Head**DUT: Dipole 5GHz; Type: D5GHzV2**

Communication System: UID 0, CW; Frequency: 5250 MHz;

Communication System PAR: 0 dB

Medium parameters used: $f = 5250$ MHz; $\sigma = 4.71$ S/m; $\epsilon_r = 36.12$; $\rho = 1000$ kg/m³

Phantom section: Flat Section

Ambient Temperature (°C) : 22.9, Liquid Temperature (°C) : 21.8

Measurement Standard: DASYS (IEEE/IEC/ANSI C63.19-2011)

DASY5 Configuration:

- Probe: EX3DV4 - SN3979; ConvF(4.8, 4.8, 4.8); Calibrated: 2022/11/23;
- Sensor-Surface: 1.4mm (Mechanical Surface Detection)
- Electronics: DAE4 Sn1425; Calibrated: 2022/11/23
- Phantom: SAM with right table; Type: SAM;
- Measurement SW: DASY52, Version 52.10 (0); SEMCAD X Version 14.6.10 (7417)

Configuration/5250MHz-Head/Area Scan (8x8x1): Measurement grid: dx=10mm, dy=10mm

Maximum value of SAR (measured) = 13.1 W/kg

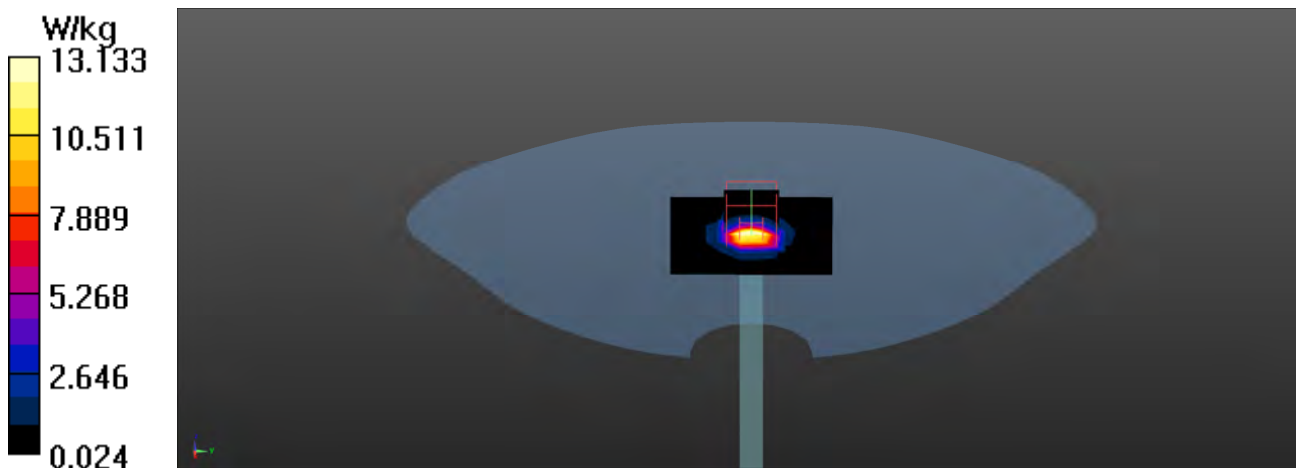
Configuration/5250MHz-Head/Zoom Scan (7x7x7)/Cube 0: Measurement grid: dx=4mm, dy=4mm, dz=1.4mm

Reference Value = 74.24 V/m; Power Drift = 0.15 dB

Peak SAR (extrapolated) = 29.7 W/kg

SAR(1 g) = 8.23 W/kg; SAR(10 g) = 2.3 W/kg

Maximum value of SAR (measured) = 21.4 W/kg



Test Laboratory: DEKRA

Date: 2023/03/03

System Performance Check_5600MHz-Head**DUT: Dipole 5GHz; Type: D5GHzV2**

Communication System: UID 0, CW; Frequency: 5600 MHz;

Communication System PAR: 0 dB

Medium parameters used: $f = 5600$ MHz; $\sigma = 5.18$ S/m; $\epsilon_r = 35.15$; $\rho = 1000$ kg/m³

Phantom section: Flat Section

Ambient Temperature (°C) : 22.9, Liquid Temperature (°C) : 21.8

Measurement Standard: DASYS (IEEE/IEC/ANSI C63.19-2011)

DASY5 Configuration:

- Probe: EX3DV4 - SN3979; ConvF(4.42, 4.42, 4.42); Calibrated: 2022/11/23;
- Sensor-Surface: 1.4mm (Mechanical Surface Detection)
- Electronics: DAE4 Sn1425; Calibrated: 2022/11/23
- Phantom: SAM with right table; Type: SAM;
- Measurement SW: DASYS2, Version 52.10 (0); SEMCAD X Version 14.6.10 (7417)

Configuration/5600MHz-Head/Area Scan (8x8x1): Measurement grid: dx=10mm, dy=10mm

Maximum value of SAR (measured) = 13.7 W/kg

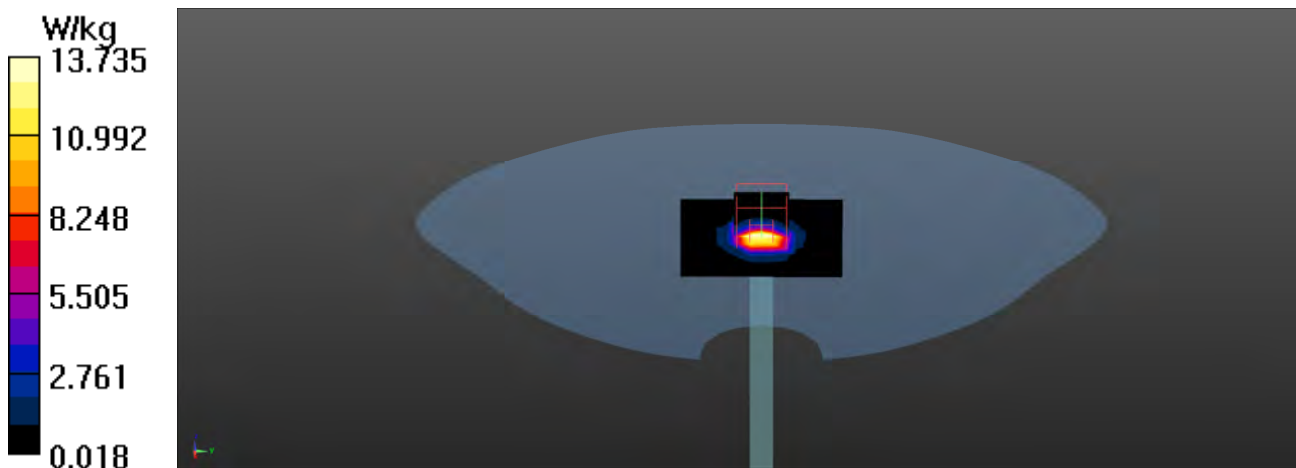
Configuration/5600MHz-Head/Zoom Scan (7x7x7)/Cube 0: Measurement grid: dx=4mm, dy=4mm, dz=1.4mm

Reference Value = 73.61 V/m; Power Drift = 0.05 dB

Peak SAR (extrapolated) = 31.4 W/kg

SAR(1 g) = 8.48 W/kg; SAR(10 g) = 2.36 W/kg

Maximum value of SAR (measured) = 22.7 W/kg



Test Laboratory: DEKRA

Date: 2023/03/03

System Performance Check_5800MHz-Head**DUT: Dipole 5GHz; Type: D5GHzV2**

Communication System: UID 0, CW; Frequency: 5800 MHz;

Communication System PAR: 0 dB

Medium parameters used: $f = 5800$ MHz; $\sigma = 5.44$ S/m; $\epsilon_r = 34.61$; $\rho = 1000$ kg/m³

Phantom section: Flat Section

Ambient Temperature (°C) : 22.9, Liquid Temperature (°C) : 21.8

Measurement Standard: DASYS (IEEE/IEC/ANSI C63.19-2011)

DASY5 Configuration:

- Probe: EX3DV4 - SN3979; ConvF(4.4, 4.4, 4.4); Calibrated: 2022/11/23;
- Sensor-Surface: 1.4mm (Mechanical Surface Detection)
- Electronics: DAE4 Sn1425; Calibrated: 2022/11/23
- Phantom: SAM with right table; Type: SAM;
- Measurement SW: DASYS2, Version 52.10 (0); SEMCAD X Version 14.6.10 (7417)

Configuration/5800MHz-Head/Area Scan (8x8x1): Measurement grid: dx=10mm, dy=10mm

Maximum value of SAR (measured) = 14.7 W/kg

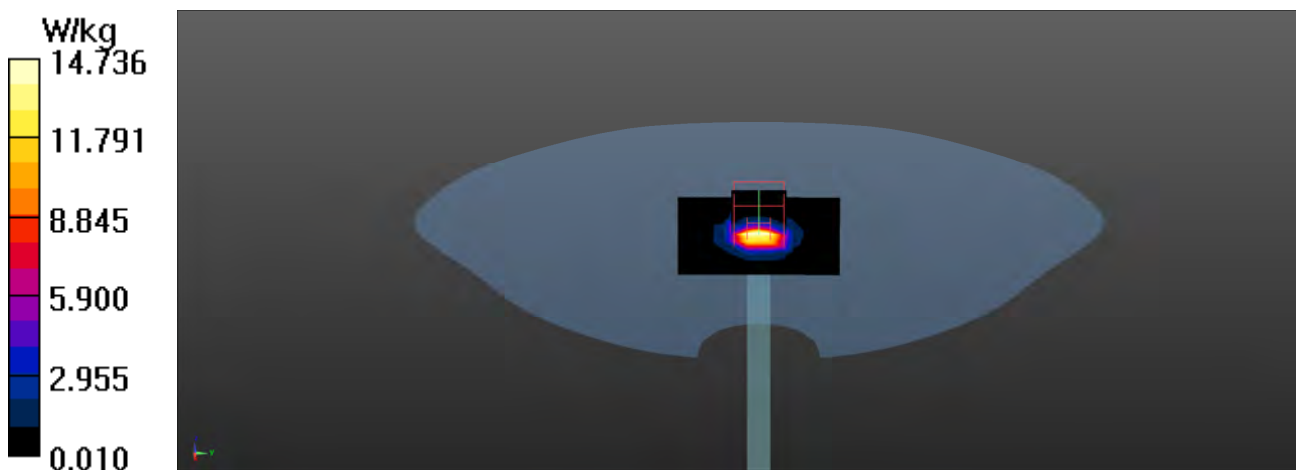
Configuration/5800MHz-Head/Zoom Scan (7x7x7)/Cube 0: Measurement grid: dx=4mm, dy=4mm, dz=1.4mm

Reference Value = 73.47 V/m; Power Drift = 0.06 dB

Peak SAR (extrapolated) = 36.5 W/kg

SAR(1 g) = 8.84 W/kg; SAR(10 g) = 2.46 W/kg

Maximum value of SAR (measured) = 24.1 W/kg



Appendix B. SAR measurement Data

Test Laboratory: DEKRA

Date: 2023/03/02

01_802.11b_1-Bottom(NB) Main_INPAQ

DUT: Notebook PC; Type: BR1402FG

Communication System: UID 0, WLAN 2.4G; Frequency: 2412 MHz;

Communication System PAR: 0 dB

Medium parameters used: $f = 2412$ MHz; $\sigma = 1.75$ S/m; $\epsilon_r = 40.37$; $\rho = 1000$ kg/m³

Phantom section: Flat Section

Ambient Temperature (°C) : 23.1, Liquid Temperature (°C) : 22.3

Measurement Standard: DASYS (IEEE/IEC/ANSI C63.19-2011)

DASY5 Configuration:

- Probe: EX3DV4 - SN3979; ConvF(7.58, 7.58, 7.58); Calibrated: 2022/11/23;
- Sensor-Surface: 1.4mm (Mechanical Surface Detection)
- Electronics: DAE4 Sn1425; Calibrated: 2022/11/23
- Phantom: SAM with left table; Type: SAM;
- Measurement SW: DASYS2, Version 52.10 (0); SEMCAD X Version 14.6.10 (7417)

Configuration/Flat/Area Scan (7x10x1): Measurement grid: dx=12mm, dy=12mm
Maximum value of SAR (measured) = 1.66 W/kg

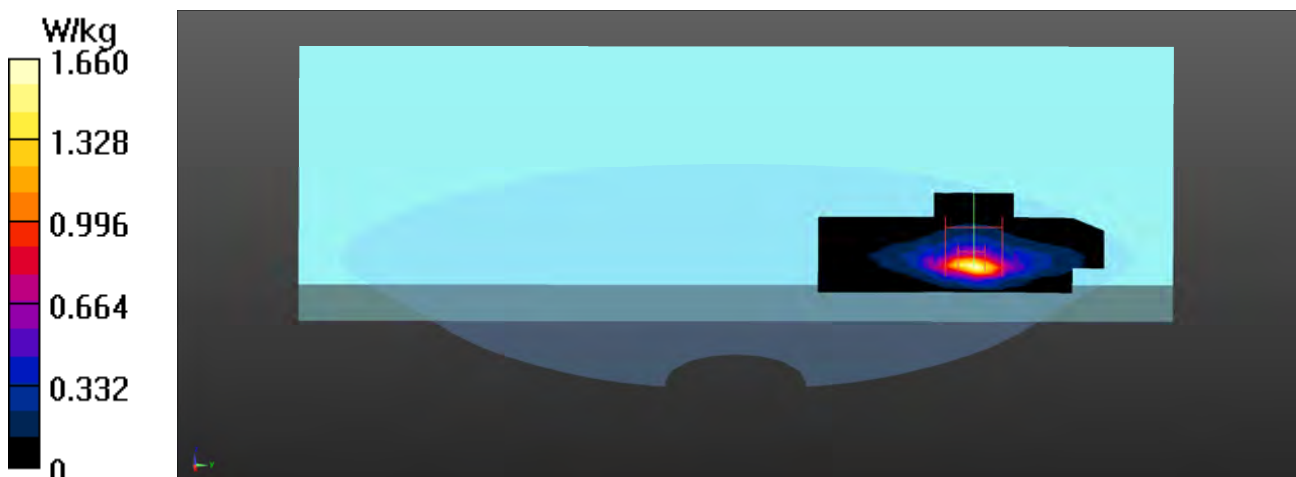
Configuration/Flat/Zoom Scan (7x7x7)/Cube 0: Measurement grid: dx=5mm, dy=5mm, dz=5mm

Reference Value = 32.13 V/m; Power Drift = -0.06 dB

Peak SAR (extrapolated) = 2.24 W/kg

SAR(1 g) = 0.941 W/kg; SAR(10 g) = 0.404 W/kg

Maximum value of SAR (measured) = 1.69 W/kg



Test Laboratory: DEKRA

Date: 2023/03/02

02_BT-1M_39-Bottom(NB) Aux_INPAQ**DUT: Notebook PC; Type: BR1402FG**

Communication System: UID 0, BT 1M&3M&BLE; Frequency: 2441 MHz;

Communication System PAR: 0 dB

Medium parameters used: $f = 2441$ MHz; $\sigma = 1.79$ S/m; $\epsilon_r = 40.26$; $\rho = 1000$ kg/m³

Phantom section: Flat Section

Ambient Temperature (°C) : 23.1, Liquid Temperature (°C) : 22.3

Measurement Standard: DASYS (IEEE/IEC/ANSI C63.19-2011)

DASY5 Configuration:

- Probe: EX3DV4 - SN3979; ConvF(7.58, 7.58, 7.58); Calibrated: 2022/11/23;
- Sensor-Surface: 1.4mm (Mechanical Surface Detection)
- Electronics: DAE4 Sn1425; Calibrated: 2022/11/23
- Phantom: SAM with left table; Type: SAM;
- Measurement SW: DASYS2, Version 52.10 (0); SEMCAD X Version 14.6.10 (7417)

Configuration/Flat/Area Scan (8x13x1): Measurement grid: dx=12mm, dy=12mm

Maximum value of SAR (measured) = 0.328 W/kg

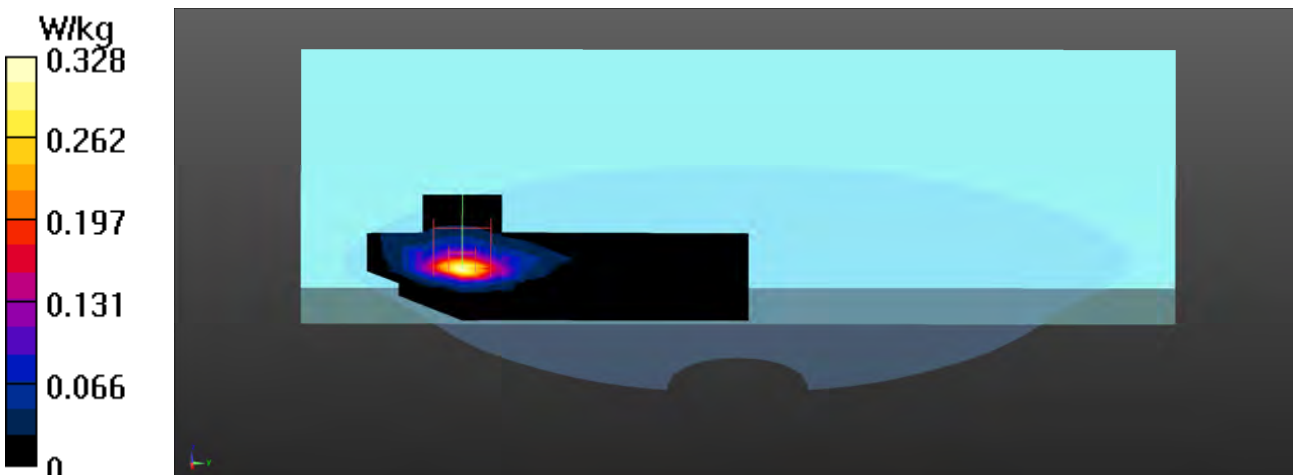
Configuration/Flat/Zoom Scan (7x7x7)/Cube 0: Measurement grid: dx=5mm, dy=5mm, dz=5mm

Reference Value = 14.28 V/m; Power Drift = -0.08 dB

Peak SAR (extrapolated) = 0.435 W/kg

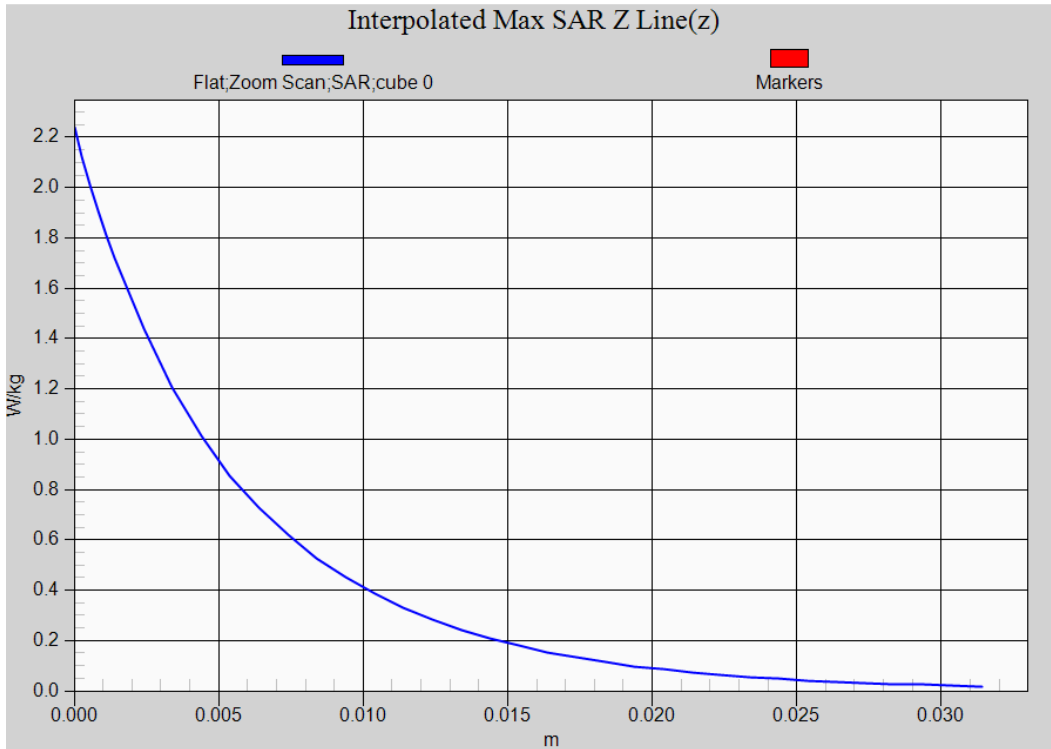
SAR(1 g) = 0.187 W/kg; SAR(10 g) = 0.083 W/kg

Maximum value of SAR (measured) = 0.338 W/kg



802.11b EUT Bottom(NB) (INPAQ Main Antenna), Z-Axis plot

Channel: 1



Test Laboratory: DEKRA

Date: 2023/03/03

03_802.11ac80M_58-Back(PAD) Main_INPAQ**DUT: Notebook PC; Type: BR1402FG**

Communication System: UID 0, WLAN 5G; Frequency: 5290 MHz;

Communication System PAR: 0 dB

Medium parameters used: $f = 5290$ MHz; $\sigma = 4.76$ S/m; $\epsilon_r = 36.01$; $\rho = 1000$ kg/m³

Phantom section: Flat Section

Ambient Temperature (°C) : 22.9, Liquid Temperature (°C) : 21.8

Measurement Standard: DASYS (IEEE/IEC/ANSI C63.19-2011)

DASY5 Configuration:

- Probe: EX3DV4 - SN3979; ConvF(4.8, 4.8, 4.8); Calibrated: 2022/11/23;
- Sensor-Surface: 1.4mm (Mechanical Surface Detection)
- Electronics: DAE4 Sn1425; Calibrated: 2022/11/23
- Phantom: SAM with right table; Type: SAM;
- Measurement SW: DASYS2, Version 52.10 (0); SEMCAD X Version 14.6.10 (7417)

Configuration/Flat/Area Scan (9x12x1): Measurement grid: dx=10mm, dy=10mm

Maximum value of SAR (measured) = 2.00 W/kg

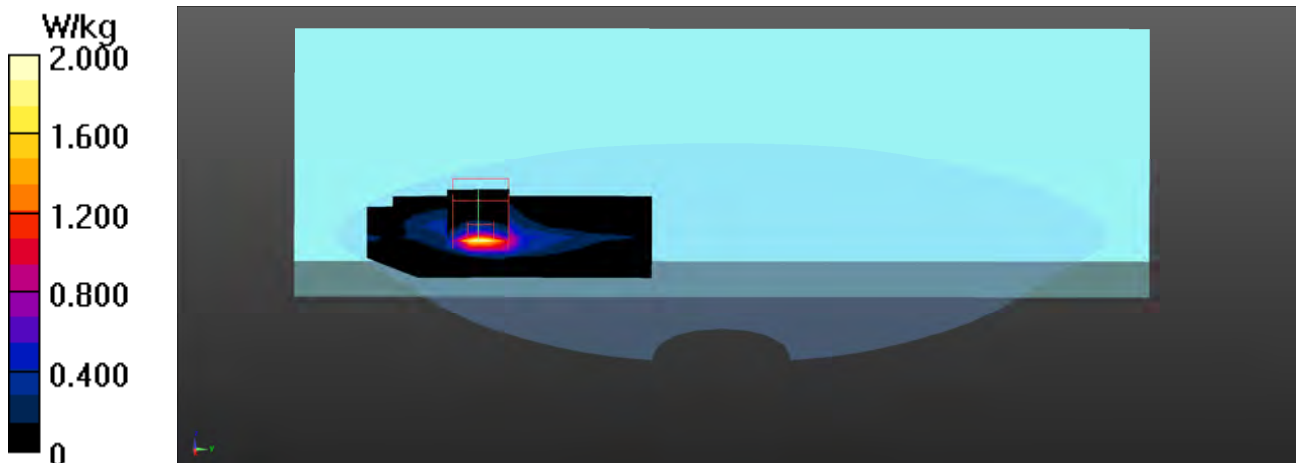
Configuration/Flat/Zoom Scan (7x7x7)/Cube 0: Measurement grid: dx=4mm, dy=4mm, dz=1.4mm

Reference Value = 24.88 V/m; Power Drift = -0.02 dB

Peak SAR (extrapolated) = 4.43 W/kg

SAR(1 g) = 0.978 W/kg; SAR(10 g) = 0.292 W/kg

Maximum value of SAR (measured) = 2.43 W/kg



Test Laboratory: DEKRA

Date: 2023/03/03

04_802.11ac80M_122-Back(PAD) Main_INPAQ**DUT: Notebook PC; Type: BR1402FG**

Communication System: UID 0, WLAN 5G; Frequency: 5610 MHz;

Communication System PAR: 0 dB

Medium parameters used: $f = 5610$ MHz; $\sigma = 5.21$ S/m; $\epsilon_r = 35.12$; $\rho = 1000$ kg/m³

Phantom section: Flat Section

Ambient Temperature (°C) : 22.9, Liquid Temperature (°C) : 21.8

Measurement Standard: DASY5 (IEEE/IEC/ANSI C63.19-2011)

DASY5 Configuration:

- Probe: EX3DV4 - SN3979; ConvF(4.42, 4.42, 4.42); Calibrated: 2022/11/23;
- Sensor-Surface: 1.4mm (Mechanical Surface Detection)
- Electronics: DAE4 Sn1425; Calibrated: 2022/11/23
- Phantom: SAM with right table; Type: SAM;
- Measurement SW: DASY52, Version 52.10 (0); SEMCAD X Version 14.6.10 (7417)

Configuration/Flat/Area Scan (8x10x1): Measurement grid: dx=10mm, dy=10mm

Maximum value of SAR (measured) = 1.84 W/kg

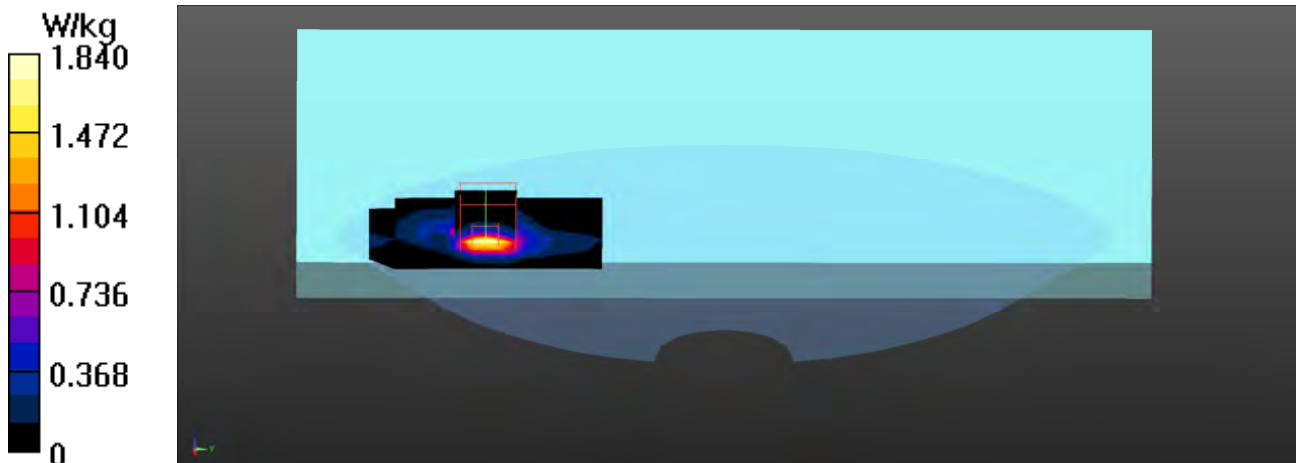
Configuration/Flat/Zoom Scan (7x7x7)/Cube 0: Measurement grid: dx=4mm, dy=4mm, dz=1.4mm

Reference Value = 24.97 V/m; Power Drift = 0.09 dB

Peak SAR (extrapolated) = 4.95 W/kg

SAR(1 g) = 1 W/kg; SAR(10 g) = 0.303 W/kg

Maximum value of SAR (measured) = 2.69 W/kg



Test Laboratory: DEKRA

Date: 2023/03/03

05_802.11ac80M_155-Back(PAD) Main_INPAQ**DUT: Notebook PC; Type: BR1402FG**

Communication System: UID 0, WLAN 5G; Frequency: 5775 MHz;

Communication System PAR: 0 dB

Medium parameters used: $f = 5775$ MHz; $\sigma = 5.41$ S/m; $\epsilon_r = 34.67$; $\rho = 1000$ kg/m³

Phantom section: Flat Section

Ambient Temperature (°C) : 22.9, Liquid Temperature (°C) : 21.8

Measurement Standard: DASY5 (IEEE/IEC/ANSI C63.19-2011)

DASY5 Configuration:

- Probe: EX3DV4 - SN3979; ConvF(4.4, 4.4, 4.4); Calibrated: 2022/11/23;
- Sensor-Surface: 1.4mm (Mechanical Surface Detection)
- Electronics: DAE4 Sn1425; Calibrated: 2022/11/23
- Phantom: SAM with right table; Type: SAM;
- Measurement SW: DASY52, Version 52.10 (0); SEMCAD X Version 14.6.10 (7417)

Configuration/Flat/Area Scan (8x10x1): Measurement grid: dx=10mm, dy=10mm

Maximum value of SAR (measured) = 1.59 W/kg

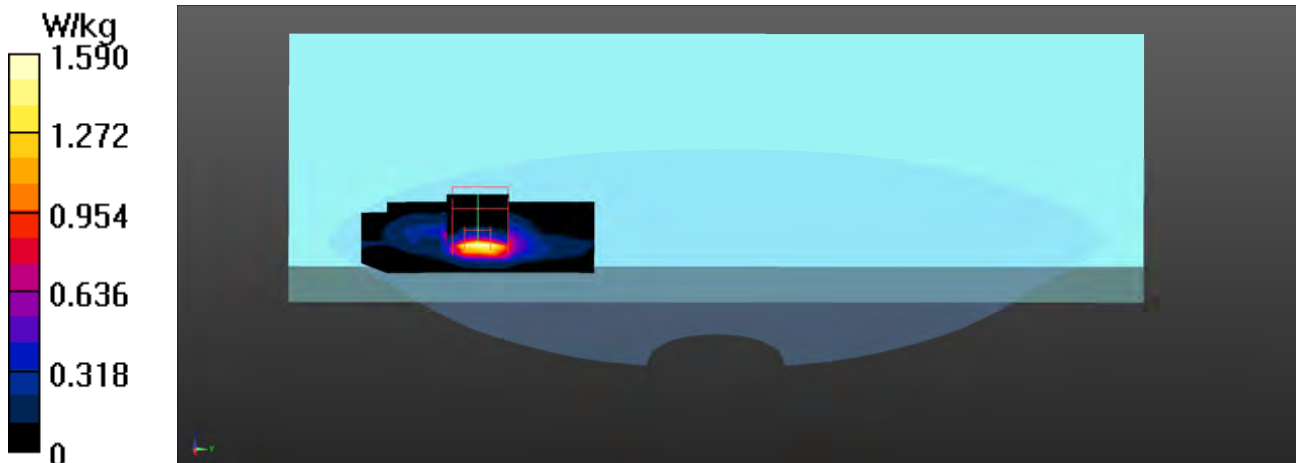
Configuration/Flat/Zoom Scan (7x7x7)/Cube 0: Measurement grid: dx=4mm, dy=4mm, dz=1.4mm

Reference Value = 22.96 V/m; Power Drift = -0.01 dB

Peak SAR (extrapolated) = 4.51 W/kg

SAR(1 g) = 0.868 W/kg; SAR(10 g) = 0.265 W/kg

Maximum value of SAR (measured) = 2.37 W/kg



Test Laboratory: DEKRA

Date: 2023/03/03

06_802.11ac80M_171-Back(PAD) Main_INPAQ**DUT: Notebook PC; Type: BR1402FG**

Communication System: UID 0, WLAN 5G; Frequency: 5855 MHz;

Communication System PAR: 0 dB

Medium parameters used: $f = 5855$ MHz; $\sigma = 5.51$ S/m; $\epsilon_r = 34.46$; $\rho = 1000$ kg/m³

Phantom section: Flat Section

Measurement Standard: DASY5 (IEEE/IEC/ANSI C63.19-2011)

DASY5 Configuration:

- Probe: EX3DV4 - SN3979; ConvF(4.4, 4.4, 4.4); Calibrated: 2022/11/23;
- Sensor-Surface: 1.4mm (Mechanical Surface Detection)
- Electronics: DAE4 Sn1425; Calibrated: 2022/11/23
- Phantom: SAM with right table; Type: SAM;
- Measurement SW: DASY52, Version 52.10 (0); SEMCAD X Version 14.6.10 (7417)

Configuration/Flat/Area Scan (8x10x1): Measurement grid: dx=10mm, dy=10mm

Maximum value of SAR (measured) = 1.50 W/kg

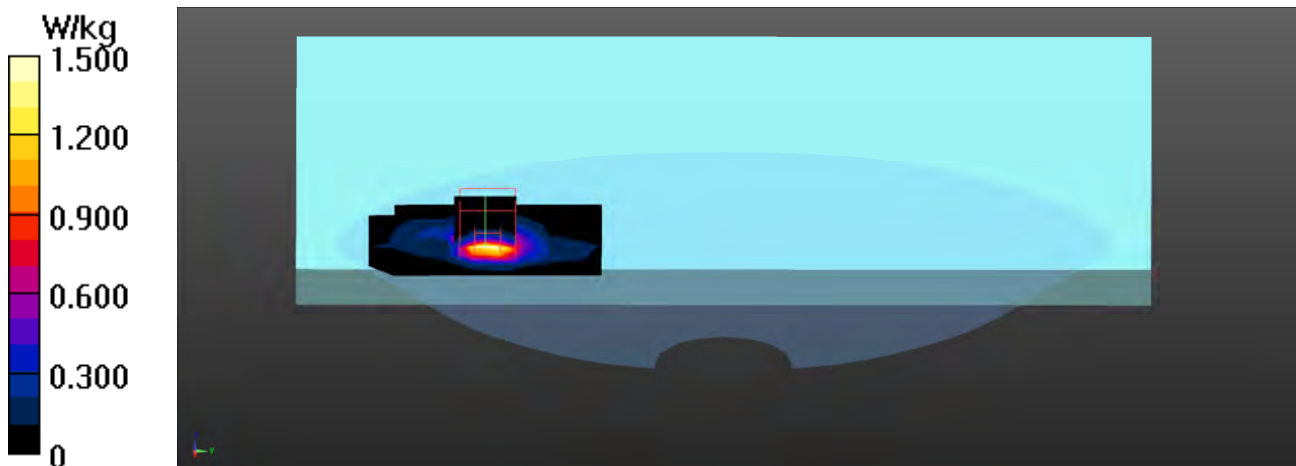
Configuration/Flat/Zoom Scan (7x7x7)/Cube 0: Measurement grid: dx=4mm, dy=4mm, dz=1.4mm

Reference Value = 21.43 V/m; Power Drift = -0.07 dB

Peak SAR (extrapolated) = 3.90 W/kg

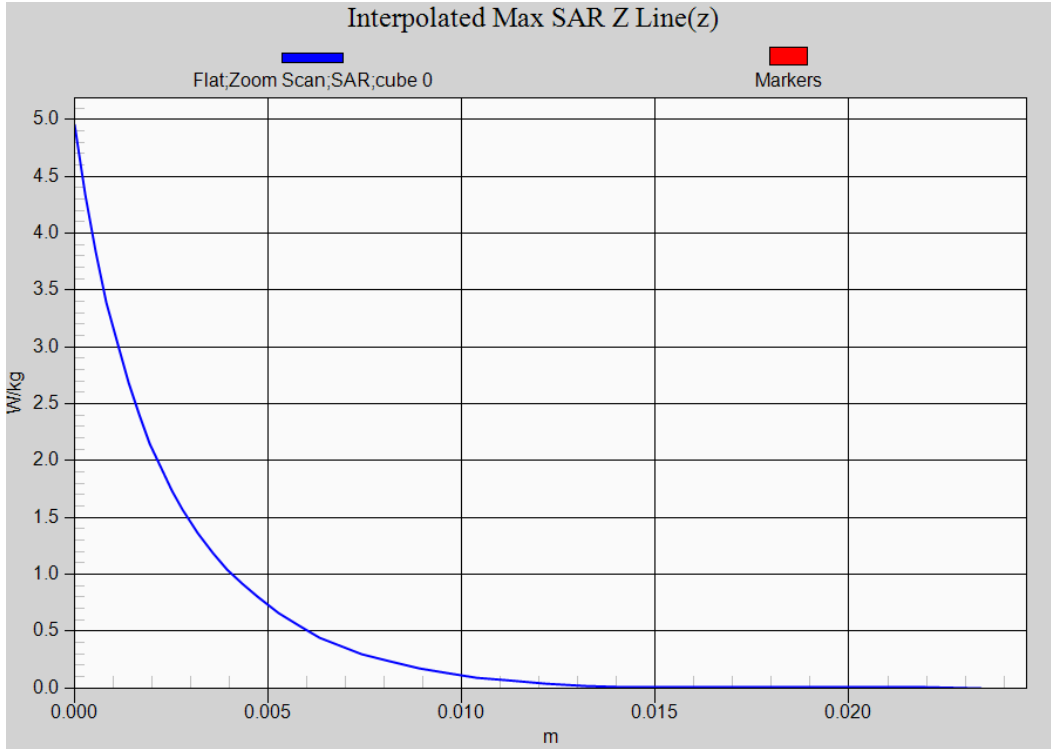
SAR(1 g) = 0.757 W/kg; SAR(10 g) = 0.233 W/kg

Maximum value of SAR (measured) = 2.05 W/kg



802.11ac80 EUT Back(PAD) (INPAQ Main Antenna), Z-Axis plot

Channel: 122



SAR measurement variability

Test Laboratory: DEKRA

Date: 2023/03/02

802.11b_1-Bottom(NB) Main_INPAQ-Verify

DUT: Notebook PC; Type: BR1402FG

Communication System: UID 0, WLAN 2.4G; Frequency: 2412 MHz;

Communication System PAR: 0 dB

Medium parameters used: $f = 2412$ MHz; $\sigma = 1.75$ S/m; $\epsilon_r = 40.37$; $\rho = 1000$ kg/m³

Phantom section: Flat Section

Ambient Temperature (°C) : 23.1, Liquid Temperature (°C) : 22.3

Measurement Standard: DASY5 (IEEE/IEC/ANSI C63.19-2011)

DASY5 Configuration:

- Probe: EX3DV4 - SN3979; ConvF(7.58, 7.58, 7.58); Calibrated: 2022/11/23;
- Sensor-Surface: 1.4mm (Mechanical Surface Detection)
- Electronics: DAE4 Sn1425; Calibrated: 2022/11/23
- Phantom: SAM with left table; Type: SAM;
- Measurement SW: DASY52, Version 52.10 (0); SEMCAD X Version 14.6.10 (7417)

Configuration/Flat/Area Scan (7x10x1): Measurement grid: dx=12mm, dy=12mm

Maximum value of SAR (measured) = 1.65 W/kg

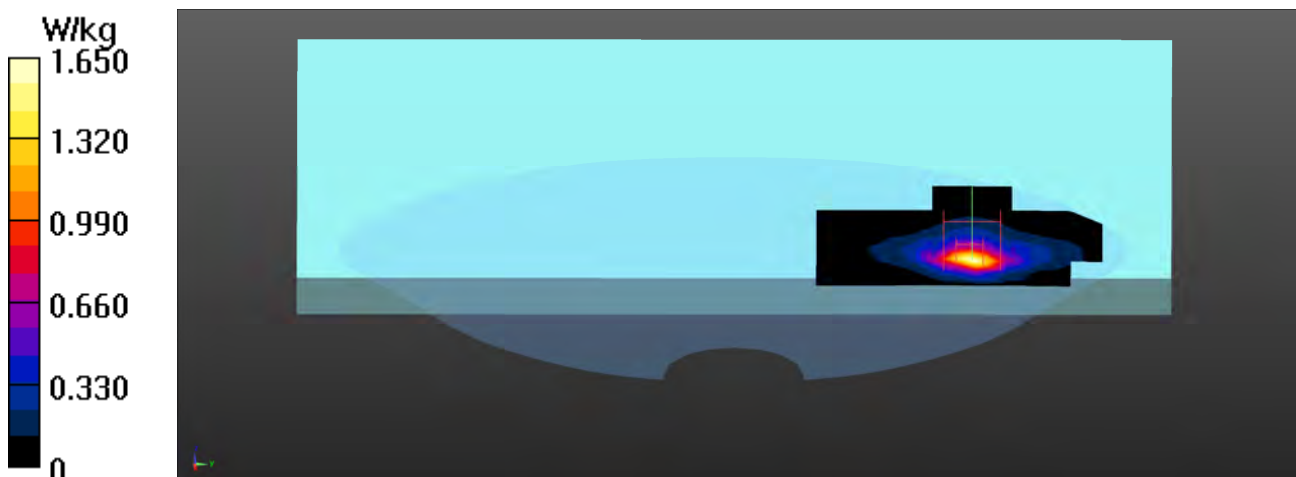
Configuration/Flat/Zoom Scan (7x7x7)/Cube 0: Measurement grid: dx=5mm, dy=5mm, dz=5mm

Reference Value = 32.25 V/m; Power Drift = -0.03 dB

Peak SAR (extrapolated) = 2.23 W/kg

SAR(1 g) = 0.935 W/kg; SAR(10 g) = 0.401 W/kg

Maximum value of SAR (measured) = 1.67 W/kg



Test Laboratory: DEKRA

Date: 2023/03/03

802.11ac80M_122-Back(PAD) Main_INPAQ-Verify**DUT: Notebook PC; Type: BR1402FG**

Communication System: UID 0, WLAN 5G; Frequency: 5610 MHz;

Communication System PAR: 0 dB

Medium parameters used: $f = 5610$ MHz; $\sigma = 5.21$ S/m; $\epsilon_r = 35.12$; $\rho = 1000$ kg/m³

Phantom section: Flat Section

Ambient Temperature (°C) : 22.9, Liquid Temperature (°C) : 21.8

Measurement Standard: DASYS (IEEE/IEC/ANSI C63.19-2011)

DASY5 Configuration:

- Probe: EX3DV4 - SN3979; ConvF(4.42, 4.42, 4.42); Calibrated: 2022/11/23;
- Sensor-Surface: 1.4mm (Mechanical Surface Detection)
- Electronics: DAE4 Sn1425; Calibrated: 2022/11/23
- Phantom: SAM with right table; Type: SAM;
- Measurement SW: DASYS2, Version 52.10 (0); SEMCAD X Version 14.6.10 (7417)

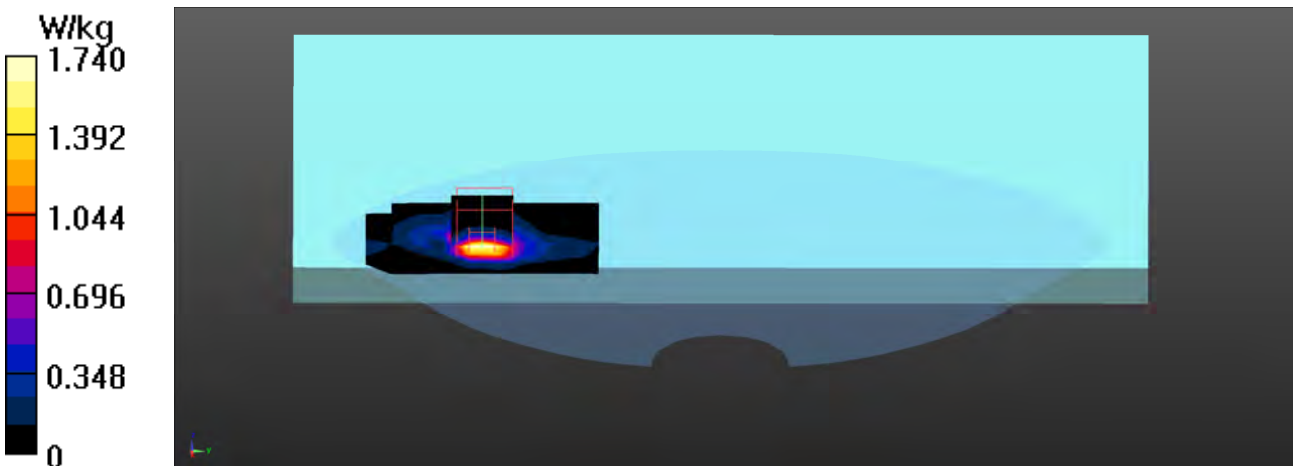
Configuration/Flat/Area Scan (8x10x1): Measurement grid: dx=10mm, dy=10mm
Maximum value of SAR (measured) = 1.74 W/kg**Configuration/Flat/Zoom Scan (7x7x7)/Cube 0:** Measurement grid: dx=4mm, dy=4mm, dz=1.4mm

Reference Value = 25.00 V/m; Power Drift = -0.08 dB

Peak SAR (extrapolated) = 4.80 W/kg

SAR(1 g) = 0.982 W/kg; SAR(10 g) = 0.296 W/kg

Maximum value of SAR (measured) = 2.60 W/kg





Appendix D. Probe Calibration



Accredited by the Swiss Accreditation Service (SAS)
The Swiss Accreditation Service is one of the signatories to the EA Multilateral Agreement for the recognition of calibration certificates

Accreditation No.: **SCS 0108**

Client **DEKRA (Auden)**

Certificate No **EX-3979_Nov22**

CALIBRATION CERTIFICATE

Object **EX3DV4 - SN:3979**

Calibration procedure(s) **QA CAL-01.v9, QA CAL-12.v9, QA CAL-14.v6, QA CAL-23.v5, QA CAL-25.v7
 Calibration procedure for dosimetric E-field probes**

Calibration date **November 23, 2022**

This calibration certificate documents the traceability to national standards, which realize the physical units of measurements (SI). The measurements and the uncertainties with confidence probability are given on the following pages and are part of the certificate.

All calibrations have been conducted in the closed laboratory facility: environment temperature (22 ± 3) °C and humidity < 70%.

Calibration Equipment used (M&TE critical for calibration)

Primary Standards	ID	Cal Date (Certificate No.)	Scheduled Calibration
Power meter NRP	SN: 104778	04-Apr-22 (No. 217-03525/03524)	Apr-23
Power sensor NRP-Z91	SN: 103244	04-Apr-22 (No. 217-03524)	Apr-23
OCP DAK-3.5 (weighted)	SN: 1249	20-Oct-22 (OCP-DAK3.5-1249_Oct22)	Oct-23
OCP DAK-12	SN: 1016	20-Oct-22 (OCP-DAK12-1016_Oct22)	Oct-23
Reference 20 dB Attenuator	SN: CC2552 (20x)	04-Apr-22 (No. 217-03527)	Apr-23
DAE4	SN: 660	10-Oct-22 (No. DAE4-660_Oct22)	Oct-23
Reference Probe ES3DV2	SN: 3013	27-Dec-21 (No. ES3-3013_Dec21)	Dec-22

Secondary Standards	ID	Check Date (in house)	Scheduled Check
Power meter E4419B	SN: GB41293874	06-Apr-16 (in house check Jun-22)	In house check: Jun-24
Power sensor E4412A	SN: MY41498087	06-Apr-16 (in house check Jun-22)	In house check: Jun-24
Power sensor E4412A	SN: 000110210	06-Apr-16 (in house check Jun-22)	In house check: Jun-24
RF generator HP 8648C	SN: US3642U01700	04-Aug-99 (in house check Jun-22)	In house check: Jun-24
Network Analyzer E8358A	SN: US41080477	31-Mar-14 (in house check Oct-22)	In house check: Oct-24

	Name	Function	Signature
Calibrated by	Jeffrey Katzman	Laboratory Technician	
Approved by	Sven Kühn	Technical Manager	

Issued: November 23, 2022

This calibration certificate shall not be reproduced except in full without written approval of the laboratory.

Calibration Laboratory of

Schmid & Partner
Engineering AG

Zeughausstrasse 43, 8004 Zurich, Switzerland



S Schweizerischer Kalibrierdienst
C Service suisse d'étalonnage
S Servizio svizzero di taratura
S Swiss Calibration Service

Accredited by the Swiss Accreditation Service (SAS)

The Swiss Accreditation Service is one of the signatories to the EA
Multilateral Agreement for the recognition of calibration certificates

Accreditation No.: **SCS 0108**

Glossary

TSL	tissue simulating liquid
NORM _{x,y,z}	sensitivity in free space
ConvF	sensitivity in TSL / NORM _{x,y,z}
DCP	diode compression point
CF	crest factor (1/duty_cycle) of the RF signal
A, B, C, D	modulation dependent linearization parameters
Polarization φ	φ rotation around probe axis
Polarization ϑ	ϑ rotation around an axis that is in the plane normal to probe axis (at measurement center), i.e., $\vartheta = 0$ is normal to probe axis
Connector Angle	information used in DASY system to align probe sensor X to the robot coordinate system

Calibration is Performed According to the Following Standards:

- IEC/IEEE 62209-1528, "Measurement Procedure For The Assessment Of Specific Absorption Rate Of Human Exposure To Radio Frequency Fields From Hand-Held And Body-Worn Wireless Communication Devices – Part 1528: Human Models, Instrumentation And Procedures (Frequency Range of 4 MHz to 10 GHz)", October 2020.
- KDB 865664, "SAR Measurement Requirements for 100 MHz to 6 GHz"

Methods Applied and Interpretation of Parameters:

- NORM_{x,y,z}**: Assessed for E-field polarization $\vartheta = 0$ ($f \leq 900$ MHz in TEM-cell; $f > 1800$ MHz: R22 waveguide). NORM_{x,y,z} are only intermediate values, i.e., the uncertainties of NORM_{x,y,z} does not affect the E²-field uncertainty inside TSL (see below ConvF).
- NORM(f)_{x,y,z} = NORM_{x,y,z} * frequency_response** (see Frequency Response Chart). This linearization is implemented in DASY4 software versions later than 4.2. The uncertainty of the frequency response is included in the stated uncertainty of ConvF.
- DCP_{x,y,z}**: DCP are numerical linearization parameters assessed based on the data of power sweep with CW signal. DCP does not depend on frequency nor media.
- PAR**: PAR is the Peak to Average Ratio that is not calibrated but determined based on the signal characteristics
- A_{x,y,z}; B_{x,y,z}; C_{x,y,z}; D_{x,y,z}; VR_{x,y,z}**: A, B, C, D are numerical linearization parameters assessed based on the data of power sweep for specific modulation signal. The parameters do not depend on frequency nor media. VR is the maximum calibration range expressed in RMS voltage across the diode.
- ConvF and Boundary Effect Parameters**: Assessed in flat phantom using E-field (or Temperature Transfer Standard for $f \leq 800$ MHz) and inside waveguide using analytical field distributions based on power measurements for $f > 800$ MHz. The same setups are used for assessment of the parameters applied for boundary compensation (alpha, depth) of which typical uncertainty values are given. These parameters are used in DASY4 software to improve probe accuracy close to the boundary. The sensitivity in TSL corresponds to NORM_{x,y,z} * ConvF whereby the uncertainty corresponds to that given for ConvF. A frequency dependent ConvF is used in DASY version 4.4 and higher which allows extending the validity from ± 50 MHz to ± 100 MHz.
- Spherical isotropy (3D deviation from isotropy)**: in a field of low gradients realized using a flat phantom exposed by a patch antenna.
- Sensor Offset**: The sensor offset corresponds to the offset of virtual measurement center from the probe tip (on probe axis). No tolerance required.
- Connector Angle**: The angle is assessed using the information gained by determining the NORM_x (no uncertainty required).

Parameters of Probe: EX3DV4 - SN:3979

Basic Calibration Parameters

	Sensor X	Sensor Y	Sensor Z	Unc (k = 2)
Norm ($\mu\text{V}/(\text{V}/\text{m})^2$) ^A	0.46	0.49	0.47	$\pm 10.1\%$
DCP (mV) ^B	103.0	101.0	103.4	$\pm 4.7\%$

Calibration Results for Modulation Response

UID	Communication System Name		A dB	B dB $\sqrt{\mu\text{V}}$	C	D dB	VR mV	Max dev.	Max Unc ^E k = 2
0	CW	X	0.00	0.00	1.00	0.00	163.8	$\pm 1.7\%$	$\pm 4.7\%$
		Y	0.00	0.00	1.00		165.4		
		Z	0.00	0.00	1.00		158.1		

The reported uncertainty of measurement is stated as the standard uncertainty of measurement multiplied by the coverage factor k=2, which for a normal distribution corresponds to a coverage probability of approximately 95%.

^A The uncertainties of Norm X,Y,Z do not affect the E²-field uncertainty inside TSL (see Page 5).

^B Linearization parameter uncertainty for maximum specified field strength.

^E Uncertainty is determined using the max. deviation from linear response applying rectangular distribution and is expressed for the square of the field value.

Parameters of Probe: EX3DV4 - SN:3979**Other Probe Parameters**

Sensor Arrangement	Triangular
Connector Angle	136.0°
Mechanical Surface Detection Mode	enabled
Optical Surface Detection Mode	disabled
Probe Overall Length	337 mm
Probe Body Diameter	10 mm
Tip Length	9 mm
Tip Diameter	2.5 mm
Probe Tip to Sensor X Calibration Point	1 mm
Probe Tip to Sensor Y Calibration Point	1 mm
Probe Tip to Sensor Z Calibration Point	1 mm
Recommended Measurement Distance from Surface	1.4 mm

Note: Measurement distance from surface can be increased to 3–4 mm for an *Area Scan* job.

Parameters of Probe: EX3DV4 - SN:3979

Calibration Parameter Determined in Head Tissue Simulating Media

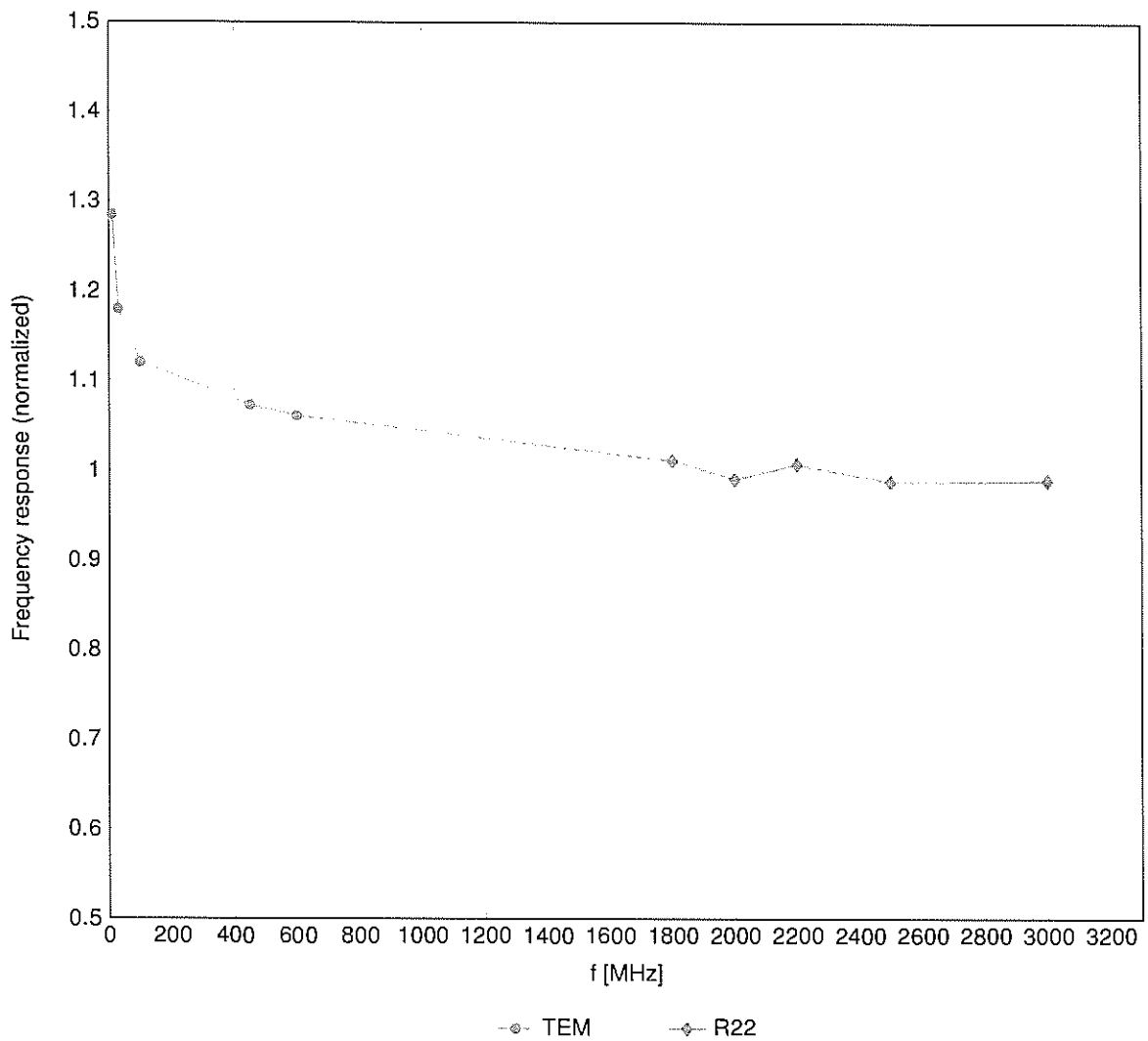
f (MHz) ^C	Relative Permittivity ^F	Conductivity ^F (S/m)	ConvF X	ConvF Y	ConvF Z	Alpha ^G	Depth ^G (mm)	Unc (k = 2)
450	43.5	0.87	10.79	10.79	10.79	0.16	1.30	±13.3%
750	41.9	0.89	10.47	10.47	10.47	0.54	0.80	±12.0%
835	41.5	0.90	10.05	10.05	10.05	0.53	0.80	±12.0%
900	41.5	0.97	9.73	9.73	9.73	0.49	0.80	±12.0%
1450	40.5	1.20	8.47	8.47	8.47	0.54	0.80	±12.0%
1640	40.2	1.31	8.48	8.48	8.48	0.38	0.86	±12.0%
1750	40.1	1.37	8.34	8.34	8.34	0.35	0.86	±12.0%
1950	40.0	1.40	8.12	8.12	8.12	0.39	0.86	±12.0%
2300	39.5	1.67	7.87	7.87	7.87	0.31	0.90	±12.0%
2450	39.2	1.80	7.58	7.58	7.58	0.34	0.90	±12.0%
2600	39.0	1.96	7.38	7.38	7.38	0.41	0.90	±12.0%
3300	38.2	2.71	6.92	6.92	6.92	0.40	1.30	±13.1%
3500	37.9	2.91	6.85	6.85	6.85	0.40	1.30	±13.1%
3700	37.7	3.12	6.82	6.82	6.82	0.35	1.30	±13.1%
5250	35.9	4.71	4.80	4.80	4.80	0.40	1.80	±13.1%
5600	35.5	5.07	4.42	4.42	4.42	0.40	1.80	±13.1%
5800	35.3	5.27	4.40	4.40	4.40	0.40	1.80	±13.1%

^C Frequency validity above 300 MHz of ±100 MHz only applies for DASY v4.4 and higher (see Page 2), else it is restricted to ±50 MHz. The uncertainty is the RSS of the ConvF uncertainty at calibration frequency and the uncertainty for the indicated frequency band. Frequency validity below 300 MHz is ±10, 25, 40, 50 and 70 MHz for ConvF assessments at 30, 64, 128, 150 and 220 MHz respectively. Validity of ConvF assessed at 6 MHz is 4–9 MHz, and ConvF assessed at 13 MHz is 9–19 MHz. Above 5 GHz frequency validity can be extended to ±110 MHz.

^F At frequencies below 3 GHz, the validity of tissue parameters (ϵ and σ) can be relaxed to ±10% if liquid compensation formula is applied to measured SAR values. At frequencies above 3 GHz, the validity of tissue parameters (ϵ and σ) is restricted to ±5%. The uncertainty is the RSS of the ConvF uncertainty for indicated target tissue parameters.

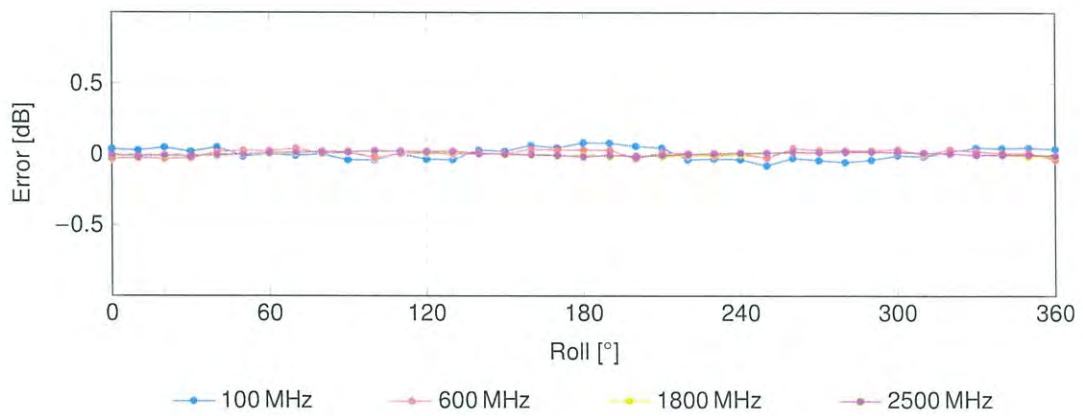
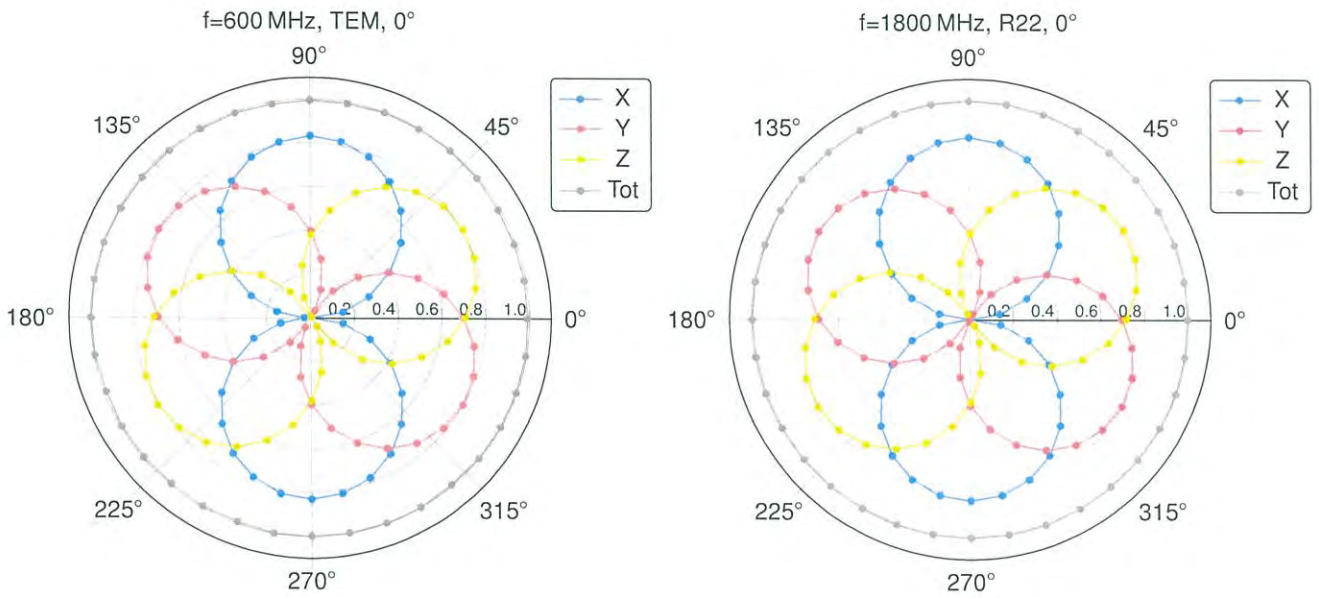
^G Alpha/Depth are determined during calibration. SPEAG warrants that the remaining deviation due to the boundary effect after compensation is always less than ±1% for frequencies below 3 GHz and below ±2% for frequencies between 3–6 GHz at any distance larger than half the probe tip diameter from the boundary.

Frequency Response of E-Field (TEM-Cell:ifi110 EXX, Waveguide:R22)



Uncertainty of Frequency Response of E-field: $\pm 6.3\%$ (k=2)

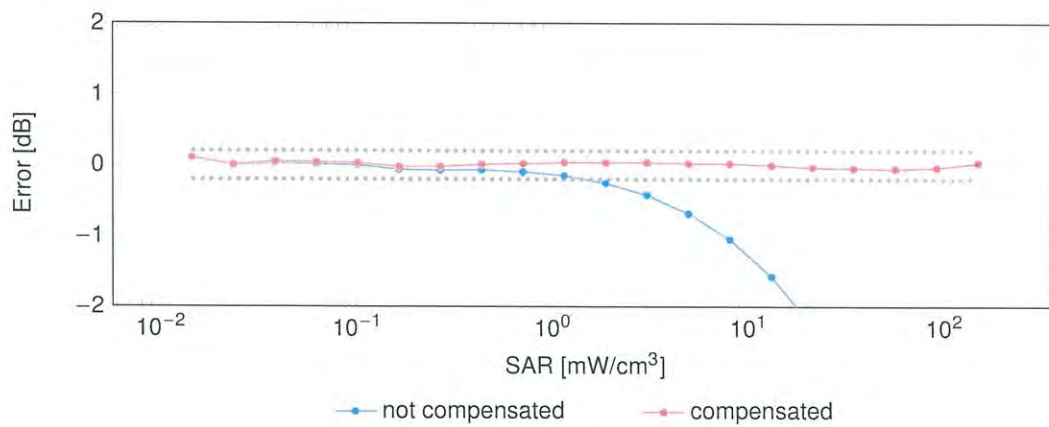
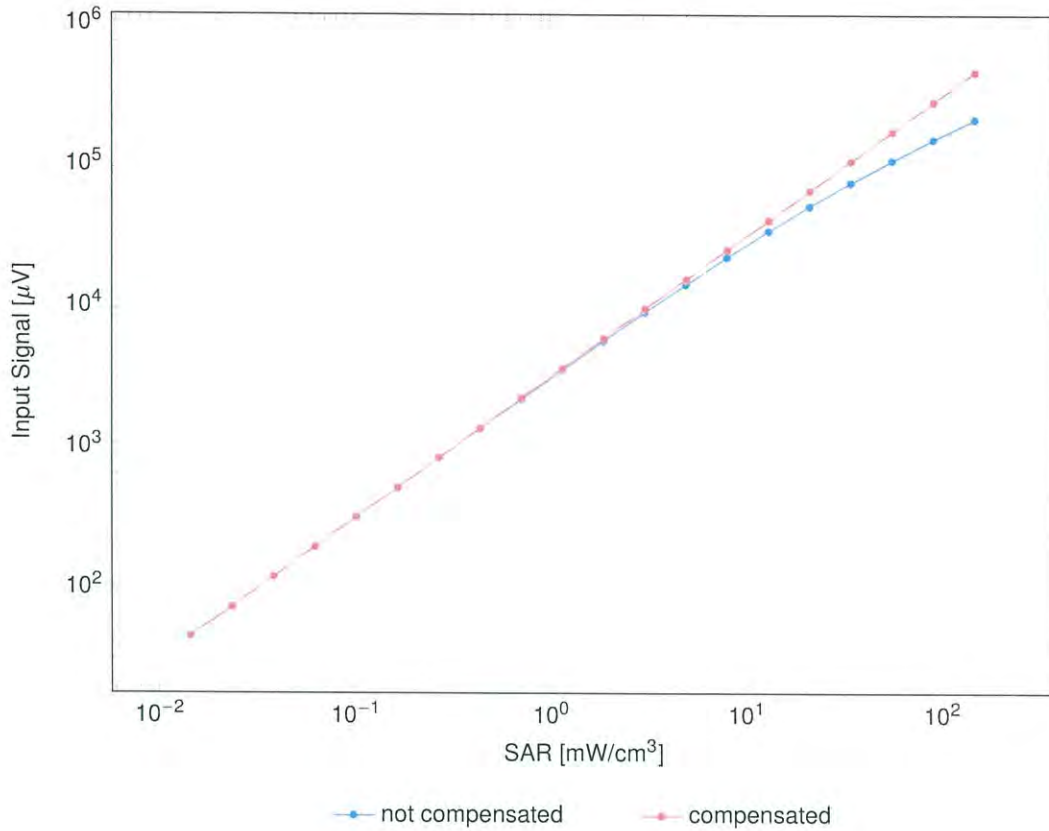
Receiving Pattern (ϕ), $\vartheta = 0^\circ$



Uncertainty of Axial Isotropy Assessment: $\pm 0.5\%$ ($k=2$)

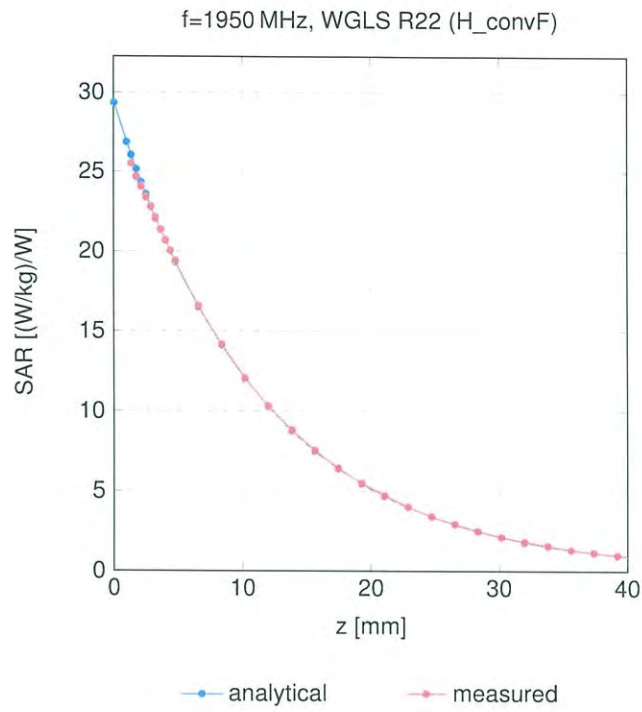
Dynamic Range f(SAR_{head})

(TEM cell, f_{eval} = 1900 MHz)



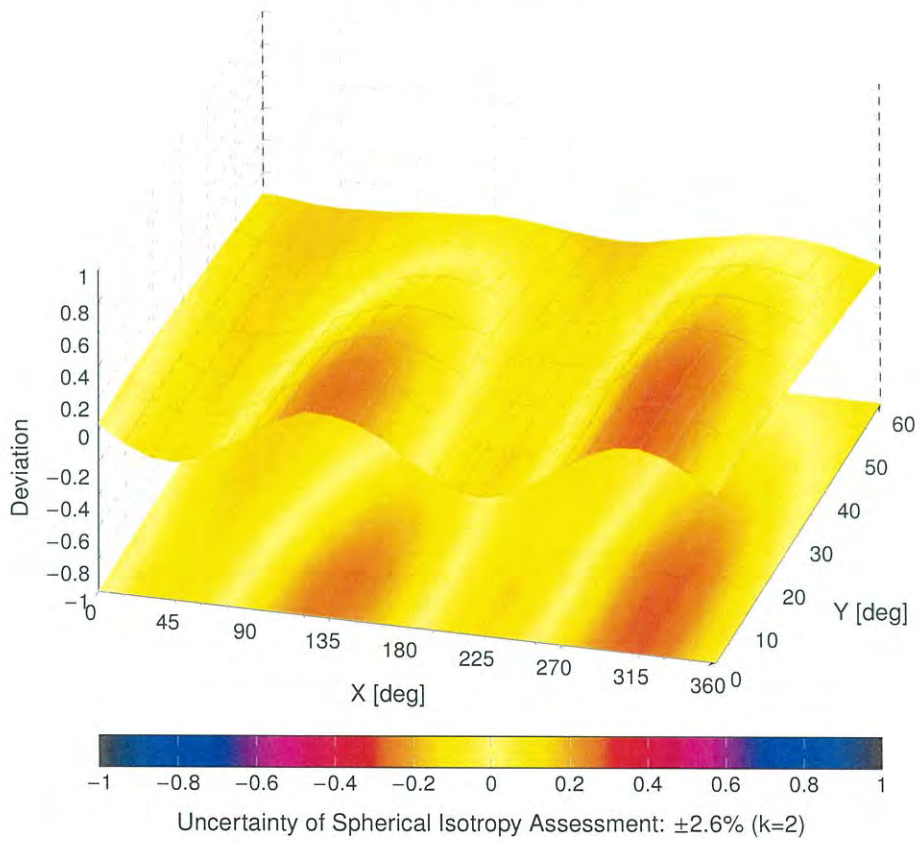
Uncertainty of Linearity Assessment: ±0.6% (k=2)

Conversion Factor Assessment



Deviation from Isotropy in Liquid

Error (ϕ, θ), f = 900 MHz





Appendix E. Dipole & Source Calibration



Accredited by the Swiss Accreditation Service (SAS)
The Swiss Accreditation Service is one of the signatories to the EA
Multilateral Agreement for the recognition of calibration certificates

Accreditation No.: **SCS 0108**

Client **DEKRA (Auden)**

Certificate No: **D2450V2-930_Nov22**

CALIBRATION CERTIFICATE

Object **D2450V2 - SN:930**

Calibration procedure(s) **QA CAL-05.v11
Calibration Procedure for SAR Validation Sources between 0.7-3 GHz**

Calibration date: **November 21, 2022**

This calibration certificate documents the traceability to national standards, which realize the physical units of measurements (SI).
The measurements and the uncertainties with confidence probability are given on the following pages and are part of the certificate.

All calibrations have been conducted in the closed laboratory facility: environment temperature (22 ± 3)°C and humidity < 70%.

Calibration Equipment used (M&TE critical for calibration)

Primary Standards	ID #	Cal Date (Certificate No.)	Scheduled Calibration
Power meter NRP	SN: 104778	04-Apr-22 (No. 217-03525/03524)	Apr-23
Power sensor NRP-Z91	SN: 103244	04-Apr-22 (No. 217-03524)	Apr-23
Power sensor NRP-Z91	SN: 103245	04-Apr-22 (No. 217-03525)	Apr-23
Reference 20 dB Attenuator	SN: BH9394 (20k)	04-Apr-22 (No. 217-03527)	Apr-23
Type-N mismatch combination	SN: 310982 / 06327	04-Apr-22 (No. 217-03528)	Apr-23
Reference Probe EX3DV4	SN: 7349	31-Dec-21 (No. EX3-7349_Dec21)	Dec-22
DAE4	SN: 601	31-Aug-22 (No. DAE4-601_Aug22)	Aug-23

Secondary Standards	ID #	Check Date (in house)	Scheduled Check
Power meter E4419B	SN: GB39512475	30-Oct-14 (in house check Oct-22)	In house check: Oct-24
Power sensor HP 8481A	SN: US37292783	07-Oct-15 (in house check Oct-22)	In house check: Oct-24
Power sensor HP 8481A	SN: MY41093315	07-Oct-15 (in house check Oct-22)	In house check: Oct-24
RF generator R&S SMT-06	SN: 100972	15-Jun-15 (in house check Oct-22)	In house check: Oct-24
Network Analyzer Agilent E8358A	SN: US41080477	31-Mar-14 (in house check Oct-22)	In house check: Oct-24

Calibrated by:	Name Jeton Kastrati	Function Laboratory Technician	Signature
Approved by:	Name Sven Kühn	Technical Manager	

Issued: November 22, 2022

This calibration certificate shall not be reproduced except in full without written approval of the laboratory.



Accredited by the Swiss Accreditation Service (SAS)

The Swiss Accreditation Service is one of the signatories to the EA Multilateral Agreement for the recognition of calibration certificates

Glossary:

TSL	tissue simulating liquid
ConvF	sensitivity in TSL / NORM x,y,z
N/A	not applicable or not measured

Calibration is Performed According to the Following Standards:

- IEC/IEEE 62209-1528, "Measurement Procedure For The Assessment Of Specific Absorption Rate Of Human Exposure To Radio Frequency Fields From Hand-Held And Body-Worn Wireless Communication Devices - Part 1528: Human Models, Instrumentation And Procedures (Frequency Range of 4 MHz to 10 GHz)", October 2020.
- KDB 865664, "SAR Measurement Requirements for 100 MHz to 6 GHz"

Additional Documentation:

- DASY System Handbook

Methods Applied and Interpretation of Parameters:

- Measurement Conditions:* Further details are available from the Validation Report at the end of the certificate. All figures stated in the certificate are valid at the frequency indicated.
- Antenna Parameters with TSL:* The source is mounted in a touch configuration below the center marking of the flat phantom.
- Return Loss:* This parameter is measured with the source positioned under the liquid filled phantom (as described in the measurement condition clause). The Return Loss ensures low reflected power. No uncertainty required.
- SAR measured:* SAR measured at the stated antenna input power.
- SAR normalized:* SAR as measured, normalized to an input power of 1 W at the antenna connector.
- SAR for nominal TSL parameters:* The measured TSL parameters are used to calculate the nominal SAR result.

The reported uncertainty of measurement is stated as the standard uncertainty of measurement multiplied by the coverage factor $k=2$, which for a normal distribution corresponds to a coverage probability of approximately 95%.

Measurement Conditions

DASY system configuration, as far as not given on page 1.

DASY Version	DASY52	V52.10.4
Extrapolation	Advanced Extrapolation	
Phantom	Modular Flat Phantom	
Distance Dipole Center - TSL	10 mm	with Spacer
Zoom Scan Resolution	dx, dy, dz = 5 mm	
Frequency	2450 MHz \pm 1 MHz	

Head TSL parameters

The following parameters and calculations were applied.

	Temperature	Permittivity	Conductivity
Nominal Head TSL parameters	22.0 °C	39.2	1.80 mho/m
Measured Head TSL parameters	(22.0 \pm 0.2) °C	38.4 \pm 6 %	1.87 mho/m \pm 6 %
Head TSL temperature change during test	< 0.5 °C	----	----

SAR result with Head TSL

SAR averaged over 1 cm ³ (1 g) of Head TSL	Condition	
SAR measured	250 mW input power	13.4 W/kg
SAR for nominal Head TSL parameters	normalized to 1W	52.4 W/kg \pm 17.0 % (k=2)

SAR averaged over 10 cm ³ (10 g) of Head TSL	condition	
SAR measured	250 mW input power	6.24 W/kg
SAR for nominal Head TSL parameters	normalized to 1W	24.6 W/kg \pm 16.5 % (k=2)

Appendix (Additional assessments outside the scope of SCS 0108)

Antenna Parameters with Head TSL

Impedance, transformed to feed point	53.7 Ω + 2.9 j Ω
Return Loss	- 26.8 dB

General Antenna Parameters and Design

Electrical Delay (one direction)	1.157 ns
----------------------------------	----------

After long term use with 100W radiated power, only a slight warming of the dipole near the feedpoint can be measured.

The dipole is made of standard semirigid coaxial cable. The center conductor of the feeding line is directly connected to the second arm of the dipole. The antenna is therefore short-circuited for DC-signals. On some of the dipoles, small end caps are added to the dipole arms in order to improve matching when loaded according to the position as explained in the "Measurement Conditions" paragraph. The SAR data are not affected by this change. The overall dipole length is still according to the Standard.

No excessive force must be applied to the dipole arms, because they might bend or the soldered connections near the feedpoint may be damaged.

Additional EUT Data

Manufactured by	SPEAG
-----------------	-------

DASY5 Validation Report for Head TSL

Date: 21.11.2022

Test Laboratory: SPEAG, Zurich, Switzerland

DUT: Dipole 2450 MHz; Type: D2450V2; Serial: D2450V2 - SN:930

Communication System: UID 0 - CW; Frequency: 2450 MHz

Medium parameters used: $f = 2450$ MHz; $\sigma = 1.87$ S/m; $\epsilon_r = 38.4$; $\rho = 1000$ kg/m³

Phantom section: Flat Section

Measurement Standard: DASY5 (IEEE/IEC/ANSI C63.19-2011)

DASY52 Configuration:

- Probe: EX3DV4 - SN7349; ConvF(7.96, 7.96, 7.96) @ 2450 MHz; Calibrated: 31.12.2021
- Sensor-Surface: 1.4mm (Mechanical Surface Detection)
- Electronics: DAE4 Sn601; Calibrated: 31.08.2022
- Phantom: Flat Phantom 5.0 (front); Type: QD 000 P50 AA; Serial: 1001
- DASY52 52.10.4(1535); SEMCAD X 14.6.14(7501)

Dipole Calibration for Head Tissue/Pin=250 mW, d=10mm/Zoom Scan (7x7x7)/Cube 0:

Measurement grid: dx=5mm, dy=5mm, dz=5mm

Reference Value = 115.6 V/m; Power Drift = 0.00 dB

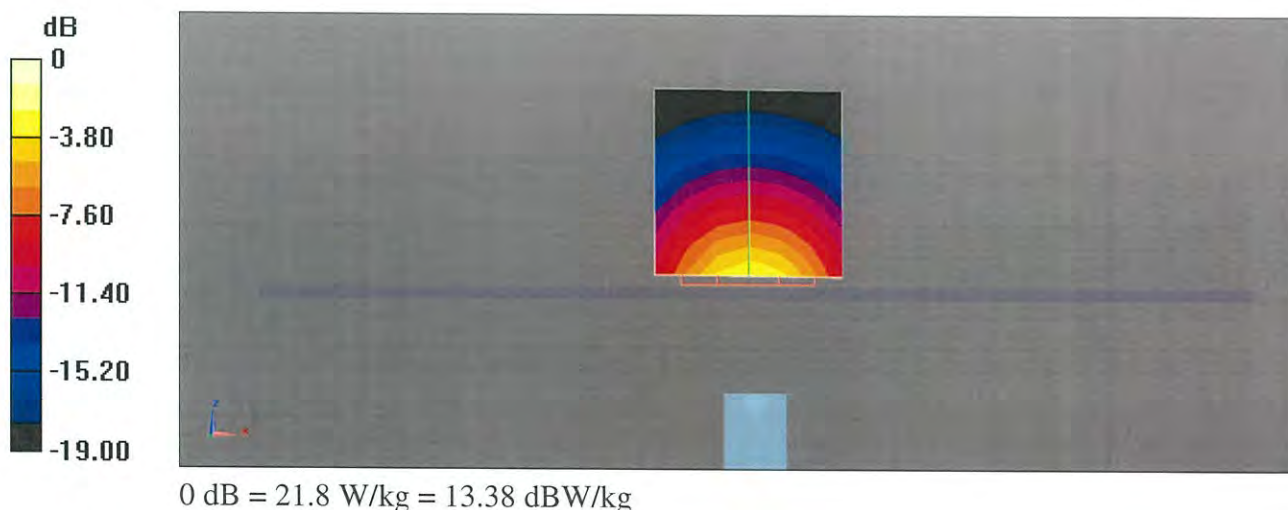
Peak SAR (extrapolated) = 25.9 W/kg

SAR(1 g) = 13.4 W/kg; SAR(10 g) = 6.24 W/kg

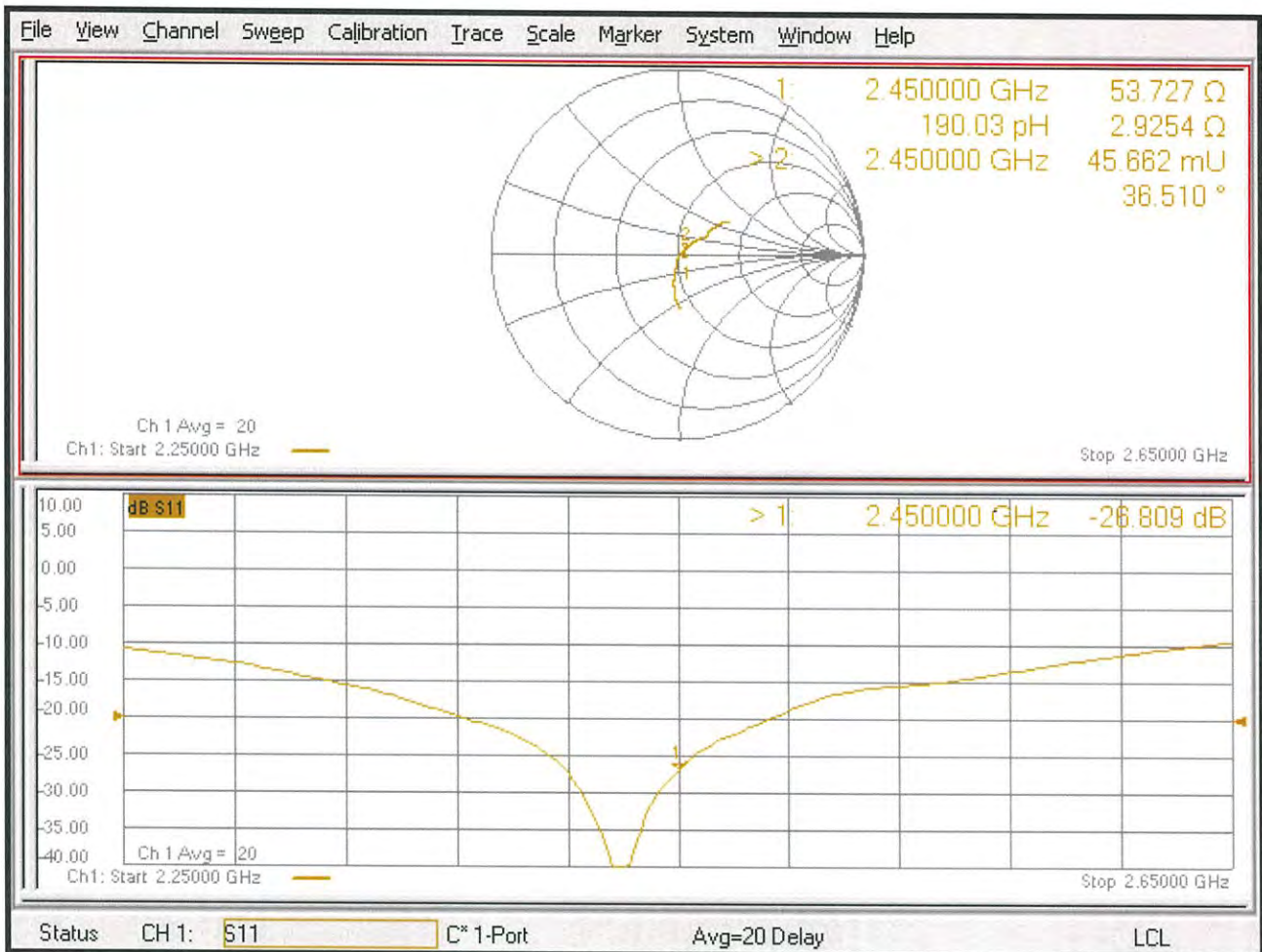
Smallest distance from peaks to all points 3 dB below = 9 mm

Ratio of SAR at M2 to SAR at M1 = 51.7%

Maximum value of SAR (measured) = 21.8 W/kg



Impedance Measurement Plot for Head TSL





Accredited by the Swiss Accreditation Service (SAS)
The Swiss Accreditation Service is one of the signatories to the EA
Multilateral Agreement for the recognition of calibration certificates

Accreditation No.: **SCS 0108**

Client **DEKRA (Auden)**

Certificate No: **D5GHzV2-1041_May20**

CALIBRATION CERTIFICATE

Object **D5GHzV2 - SN:1041**

Calibration procedure(s) **QA CAL-22.v4
Calibration Procedure for SAR Validation Sources between 3-6 GHz**

Calibration date: **May 25, 2020**

This calibration certificate documents the traceability to national standards, which realize the physical units of measurements (SI).
The measurements and the uncertainties with confidence probability are given on the following pages and are part of the certificate.

All calibrations have been conducted in the closed laboratory facility: environment temperature (22 ± 3)°C and humidity < 70%.

Calibration Equipment used (M&TE critical for calibration)

Primary Standards	ID #	Cal Date (Certificate No.)	Scheduled Calibration
Power meter NRP	SN: 104778	01-Apr-20 (No. 217-03100/03101)	Apr-21
Power sensor NRP-Z91	SN: 103244	01-Apr-20 (No. 217-03100)	Apr-21
Power sensor NRP-Z91	SN: 103245	01-Apr-20 (No. 217-03101)	Apr-21
Reference 20 dB Attenuator	SN: BH9394 (20k)	31-Mar-20 (No. 217-03106)	Apr-21
Type-N mismatch combination	SN: 310982 / 06327	31-Mar-20 (No. 217-03104)	Apr-21
Reference Probe EX3DV4	SN: 3503	31-Dec-19 (No. EX3-3503_Dec19)	Dec-20
DAE4	SN: 601	27-Dec-19 (No. DAE4-601_Dec19)	Dec-20

Secondary Standards	ID #	Check Date (in house)	Scheduled Check
Power meter E4419B	SN: GB39512475	30-Oct-14 (in house check Feb-19)	In house check: Oct-20
Power sensor HP 8481A	SN: US37292783	07-Oct-15 (in house check Oct-18)	In house check: Oct-20
Power sensor HP 8481A	SN: MY41092317	07-Oct-15 (in house check Oct-18)	In house check: Oct-20
RF generator R&S SMT-06	SN: 100972	15-Jun-15 (in house check Oct-18)	In house check: Oct-20
Network Analyzer Agilent E8358A	SN: US41080477	31-Mar-14 (in house check Oct-19)	In house check: Oct-20

Calibrated by:	Name Michael Weber	Function Laboratory Technician	Signature
Approved by:	Name Katja Pokovic	Function Technical Manager	Signature

Issued: May 26, 2020

This calibration certificate shall not be reproduced except in full without written approval of the laboratory.



Accredited by the Swiss Accreditation Service (SAS)

The Swiss Accreditation Service is one of the signatories to the EA
Multilateral Agreement for the recognition of calibration certificates

Accreditation No.: **SCS 0108**

Glossary:

TSL	tissue simulating liquid
ConvF	sensitivity in TSL / NORM x,y,z
N/A	not applicable or not measured

Calibration is Performed According to the Following Standards:

- IEEE Std 1528-2013, "IEEE Recommended Practice for Determining the Peak Spatial-Averaged Specific Absorption Rate (SAR) in the Human Head from Wireless Communications Devices: Measurement Techniques", June 2013
- IEC 62209-1, "Measurement procedure for the assessment of Specific Absorption Rate (SAR) from hand-held and body-mounted devices used next to the ear (frequency range of 300 MHz to 6 GHz)", July 2016
- IEC 62209-2, "Procedure to determine the Specific Absorption Rate (SAR) for wireless communication devices used in close proximity to the human body (frequency range of 30 MHz to 6 GHz)", March 2010
- KDB 865664, "SAR Measurement Requirements for 100 MHz to 6 GHz"

Additional Documentation:

- DASY4/5 System Handbook

Methods Applied and Interpretation of Parameters:

- Measurement Conditions:** Further details are available from the Validation Report at the end of the certificate. All figures stated in the certificate are valid at the frequency indicated.
- Antenna Parameters with TSL:** The dipole is mounted with the spacer to position its feed point exactly below the center marking of the flat phantom section, with the arms oriented parallel to the body axis.
- Feed Point Impedance and Return Loss:** These parameters are measured with the dipole positioned under the liquid filled phantom. The impedance stated is transformed from the measurement at the SMA connector to the feed point. The Return Loss ensures low reflected power. No uncertainty required.
- Electrical Delay:** One-way delay between the SMA connector and the antenna feed point. No uncertainty required.
- SAR measured:** SAR measured at the stated antenna input power.
- SAR normalized:** SAR as measured, normalized to an input power of 1 W at the antenna connector.
- SAR for nominal TSL parameters:** The measured TSL parameters are used to calculate the nominal SAR result.

The reported uncertainty of measurement is stated as the standard uncertainty of measurement multiplied by the coverage factor $k=2$, which for a normal distribution corresponds to a coverage probability of approximately 95%.

Measurement Conditions

DASY system configuration, as far as not given on page 1.

DASY Version	DASY5	V52.10.4
Extrapolation	Advanced Extrapolation	
Phantom	Modular Flat Phantom V5.0	
Distance Dipole Center - TSL	10 mm	with Spacer
Zoom Scan Resolution	dx, dy = 10.0 mm, dz = 10.0 mm	Graded Ratio = 1.4 (Z direction)
Frequency	5250 MHz ± 1 MHz 5600 MHz ± 1 MHz 5800 MHz ± 1 MHz	

Head TSL parameters at 5250 MHz

The following parameters and calculations were applied.

	Temperature	Permittivity	Conductivity
Nominal Head TSL parameters	22.0 °C	35.9	4.71 mho/m
Measured Head TSL parameters	(22.0 ± 0.2) °C	35.3 ± 6 %	4.55 mho/m ± 6 %
Head TSL temperature change during test	< 0.5 °C	----	----

SAR result with Head TSL at 5250 MHz

SAR averaged over 1 cm³ (1 g) of Head TSL	Condition	
SAR measured	100 mW input power	8.20 W/kg
SAR for nominal Head TSL parameters	normalized to 1W	81.6 W/kg ± 19.9 % (k=2)

SAR averaged over 10 cm³ (10 g) of Head TSL	condition	
SAR measured	100 mW input power	2.33 W/kg
SAR for nominal Head TSL parameters	normalized to 1W	23.2 W/kg ± 19.5 % (k=2)

Head TSL parameters at 5600 MHz

The following parameters and calculations were applied.

	Temperature	Permittivity	Conductivity
Nominal Head TSL parameters	22.0 °C	35.5	5.07 mho/m
Measured Head TSL parameters	(22.0 ± 0.2) °C	34.8 ± 6 %	4.90 mho/m ± 6 %
Head TSL temperature change during test	< 0.5 °C	----	----

SAR result with Head TSL at 5600 MHz

SAR averaged over 1 cm³ (1 g) of Head TSL	Condition	
SAR measured	100 mW input power	8.63 W/kg
SAR for nominal Head TSL parameters	normalized to 1W	85.9 W/kg ± 19.9 % (k=2)

SAR averaged over 10 cm³ (10 g) of Head TSL	condition	
SAR measured	100 mW input power	2.43 W/kg
SAR for nominal Head TSL parameters	normalized to 1W	24.2 W/kg ± 19.5 % (k=2)

Head TSL parameters at 5800 MHz

The following parameters and calculations were applied.

	Temperature	Permittivity	Conductivity
Nominal Head TSL parameters	22.0 °C	35.3	5.27 mho/m
Measured Head TSL parameters	(22.0 ± 0.2) °C	34.5 ± 6 %	5.11 mho/m ± 6 %
Head TSL temperature change during test	< 0.5 °C	----	----

SAR result with Head TSL at 5800 MHz

SAR averaged over 1 cm ³ (1 g) of Head TSL	Condition	
SAR measured	100 mW input power	8.25 W/kg
SAR for nominal Head TSL parameters	normalized to 1W	82.0 W/kg ± 19.9 % (k=2)

SAR averaged over 10 cm ³ (10 g) of Head TSL	condition	
SAR measured	100 mW input power	2.30 W/kg
SAR for nominal Head TSL parameters	normalized to 1W	22.8 W/kg ± 19.5 % (k=2)

Appendix (Additional assessments outside the scope of SCS 0108)

Antenna Parameters with Head TSL at 5250 MHz

Impedance, transformed to feed point	49.0 Ω - 4.4 j Ω
Return Loss	- 26.9 dB

Antenna Parameters with Head TSL at 5600 MHz

Impedance, transformed to feed point	56.3 Ω - 1.2 j Ω
Return Loss	- 24.4 dB

Antenna Parameters with Head TSL at 5800 MHz

Impedance, transformed to feed point	54.3 Ω - 2.1 j Ω
Return Loss	- 26.8 dB

General Antenna Parameters and Design

Electrical Delay (one direction)	1.197 ns
----------------------------------	----------

After long term use with 100W radiated power, only a slight warming of the dipole near the feedpoint can be measured.

The dipole is made of standard semirigid coaxial cable. The center conductor of the feeding line is directly connected to the second arm of the dipole. The antenna is therefore short-circuited for DC-signals. On some of the dipoles, small end caps are added to the dipole arms in order to improve matching when loaded according to the position as explained in the "Measurement Conditions" paragraph. The SAR data are not affected by this change. The overall dipole length is still according to the Standard.

No excessive force must be applied to the dipole arms, because they might bend or the soldered connections near the feedpoint may be damaged.

Additional EUT Data

Manufactured by	SPEAG
-----------------	-------

DASY5 Validation Report for Head TSL

Date: 25.05.2020

Test Laboratory: SPEAG, Zurich, Switzerland

DUT: Dipole D5GHzV2; Type: D5GHzV2; Serial: D5GHzV2 - SN:1041

Communication System: UID 0 - CW; Frequency: 5250 MHz, Frequency: 5600 MHz, Frequency: 5800 MHz

Medium parameters used: $f = 5250$ MHz; $\sigma = 4.55$ S/m; $\epsilon_r = 35.3$; $\rho = 1000$ kg/m³,

Medium parameters used: $f = 5600$ MHz; $\sigma = 4.9$ S/m; $\epsilon_r = 34.8$; $\rho = 1000$ kg/m³,

Medium parameters used: $f = 5800$ MHz; $\sigma = 5.11$ S/m; $\epsilon_r = 34.5$; $\rho = 1000$ kg/m³

Phantom section: Flat Section

Measurement Standard: DASY5 (IEEE/IEC/ANSI C63.19-2011)

DASY52 Configuration:

- Probe: EX3DV4 - SN3503; ConvF(5.5, 5.5, 5.5) @ 5250 MHz, ConvF(5.1, 5.1, 5.1) @ 5600 MHz, ConvF(5.01, 5.01, 5.01) @ 5800 MHz; Calibrated: 31.12.2019
- Sensor-Surface: 1.4mm (Mechanical Surface Detection)
- Electronics: DAE4 Sn601; Calibrated: 27.12.2019
- Phantom: Flat Phantom 5.0 (front); Type: QD 000 P50 AA; Serial: 1001
- DASY52 52.10.4(1527); SEMCAD X 14.6.14(7483)

Dipole Calibration for Head Tissue/Pin=100mW, dist=10mm, f=5250 MHz/Zoom Scan, dist=1.4mm (8x8x7)/Cube 0: Measurement grid: dx=4mm, dy=4mm, dz=1.4mm

Reference Value = 79.63 V/m; Power Drift = 0.04 dB

Peak SAR (extrapolated) = 28.8 W/kg

SAR(1 g) = 8.20 W/kg; SAR(10 g) = 2.33 W/kg

Smallest distance from peaks to all points 3 dB below = 7.2 mm

Ratio of SAR at M2 to SAR at M1 = 69.4%

Maximum value of SAR (measured) = 18.9 W/kg

Dipole Calibration for Head Tissue/Pin=100mW, dist=10mm, f=5600 MHz/Zoom Scan, dist=1.4mm (8x8x7)/Cube 0: Measurement grid: dx=4mm, dy=4mm, dz=1.4mm

Reference Value = 79.80 V/m; Power Drift = 0.05 dB

Peak SAR (extrapolated) = 32.6 W/kg

SAR(1 g) = 8.63 W/kg; SAR(10 g) = 2.43 W/kg

Smallest distance from peaks to all points 3 dB below = 7.4 mm

Ratio of SAR at M2 to SAR at M1 = 66.8%

Maximum value of SAR (measured) = 20.6 W/kg

Dipole Calibration for Head Tissue/Pin=100mW, dist=10mm, f=5800 MHz/Zoom Scan, dist=1.4mm (8x8x7)/Cube 0: Measurement grid: dx=4mm, dy=4mm, dz=1.4mm

Reference Value = 77.63 V/m; Power Drift = 0.04 dB

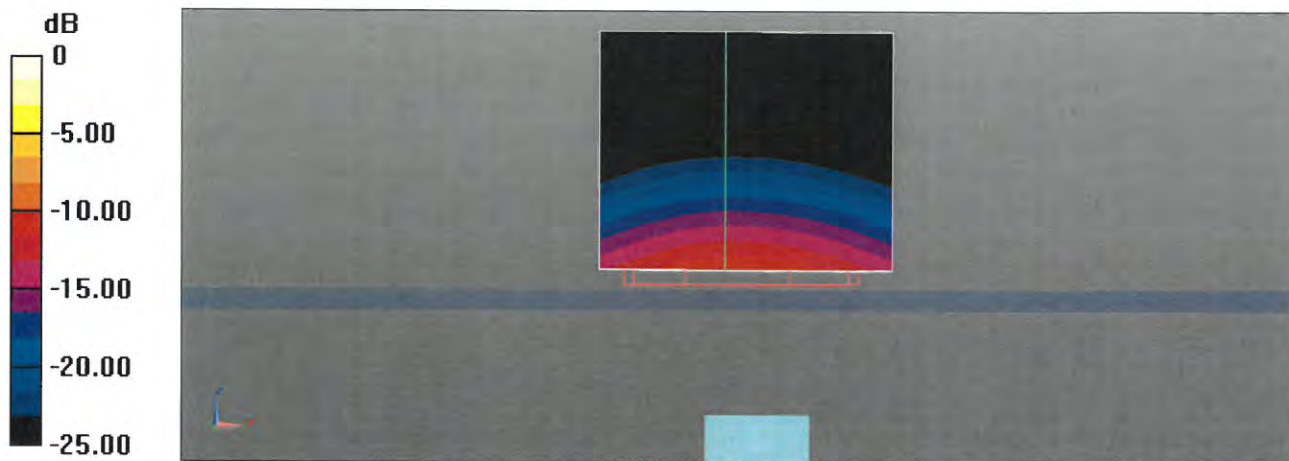
Peak SAR (extrapolated) = 33.4 W/kg

SAR(1 g) = 8.25 W/kg; SAR(10 g) = 2.30 W/kg

Smallest distance from peaks to all points 3 dB below = 7.2 mm

Ratio of SAR at M2 to SAR at M1 = 64.8%

Maximum value of SAR (measured) = 20.2 W/kg



0 dB = 20.6 W/kg = 13.13 dBW/kg

Impedance Measurement Plot for Head TSL

