

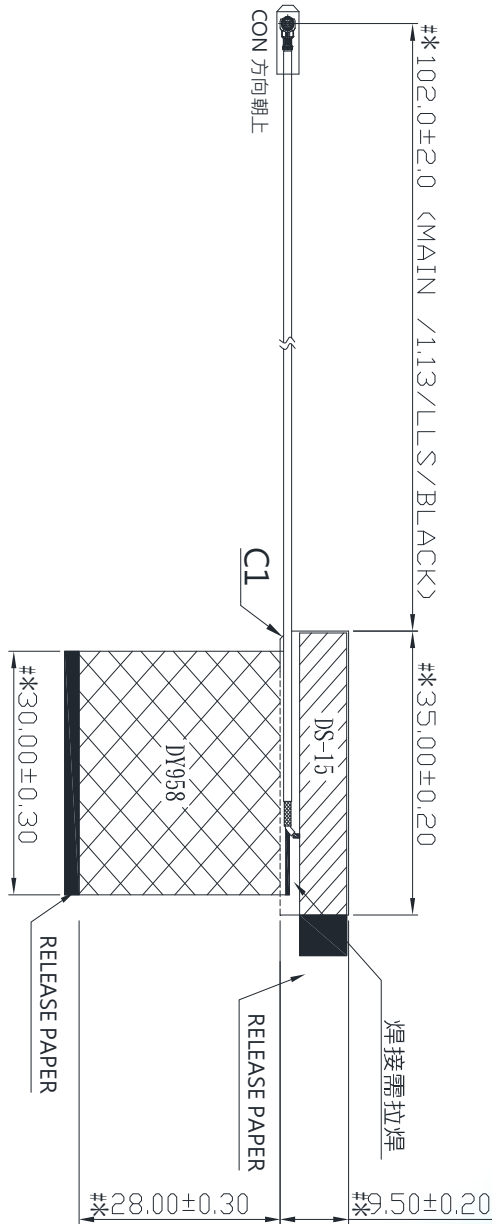
Description: BR1402 MAIN ANT



Series: BR1402 MAIN

ASUS P/N : 14008-05650200

PULSE P/N : TZ2486D



Features:

- WLAN Antenna
- Printed Circuit Board
- Adheres to plastic surface
- 1.13mm cable with NGFF
- RoHS Compliant

Applications:

- Notebook computer

All dimensions are in mm / inches

Issue: 2032 DRAFT RALFYE

In the effort to improve our products, we reserve the right to make changes judged to be necessary.

CONFIDENTIAL AND PROPRIETARY INFORMATION

This document contains confidential and proprietary information of Pulse Electronics, Inc. (Pulse) and is protected by copyright, trade secret and other state and federal laws. Its receipt or possession does not convey any rights to reproduce, disclose its contents, or to manufacture, use or sell anything it may describe. Reproduction, disclosure or use without specific written authorization of Pulse is strictly forbidden.

For more information:

Pulse Worldwide Headquarters
15255 Innovation Drive #100
San Diego, CA 92128
USA
Tel: 1-858-674-8100

Pulse/Larsen Antennas
18110 SE 34th St Bldg 2 Suite 250
Vancouver, WA 98683
USA
Tel: 1-360-944-7551

Europe Headquarters
Pulse GmbH & Do, KG
Zeppelinstrasse 15
Herrenberg, Germany
Tel: 49 7032 7806 0

Pulse (Suzhou) Wireless Products Co, Inc.
99 Huo Ju Road(#29 Bldg, 4th Phase
Suzhou New District
Jiangsu Province, Suzhou 215009 PR China
Tel: 86 512 6807 9998



Description: BR1402 MAIN ANT



Series: BR1402 MAIN

ASUS P/N : 14008-05650200

PULSE P/N : TZ2486D

ELECTRICAL SPECIFICATIONS

Antenna Type	PCB PIFA
Frequency	2.4-2.5GHz,5.15-5.875GHz
Nominal Impedance	50 Ω
VSWR	3:1
Radiation Pattern	Omni
Gain	Refer to gain table
Polarization	Linear
Power Withstanding	1W

MECHANICAL SPECIFICATIONS

Overall Length	35x9.5 mm
Antenna Color / Material	Black/ PCB
Connector type	See table, P3
Cable type	See table, P3
Cable length	See table, P3
Adhesive tape	HF DS15

ENVIRONMENTAL SPECIFICATIONS

Operating Temperature	-40 ~ +85°C
Storage Temperature	-40 ~ +85°C
RoHS Compliant	Yes

Issue: 2032 DRAFT RALFYE

In the effort to improve our products, we reserve the right to make changes judged to be necessary.
CONFIDENTIAL AND PROPRIETARY INFORMATION

This document contains confidential and proprietary information of Pulse Electronics, Inc. (Pulse) and is protected by copyright, trade secret and other state and federal laws. Its receipt or possession does not convey any rights to reproduce, disclose its contents, or to manufacture, use or sell anything it may describe. Reproduction, disclosure or use without specific written authorization of Pulse is strictly forbidden.



Description: BR1402 MAIN ANT



Series: BR1402 MAIN

ASUS P/N : 14008-05650200

PULSE P/N : TZ2486D

MECHANICAL DRAWING

MOD	REVISION DESCRIPTION	DATE / EDITOR															
P4	PCB PATTERN & CABLE WIRE OUTER CONDUCTOR CHANGE	2022.09.23 / RJ	Please follow Pulse Limits for the hazardous substances (RoHS, halogens) in the document "Pulse Hazardous Substances (HS) Limits (RPGE002-03)" and "Vendor Survey Questionnaire, Material Composition (LDM-SAF-L0040)".	Reliability Test Spec according to WIKS7's 33 (Reliability Test Working Instruction) Default test standard is Test Standard A if no definition	<p style="text-align: center;">-TOLERANCES- UNLESS OTHERWISE SPECIFIED 公差參考表</p> <table border="1" style="width:100%; border-collapse: collapse;"> <tr> <td>0-30</td> <td>±0.2</td> </tr> <tr> <td>30-50</td> <td>±0.2</td> </tr> <tr> <td>50-100</td> <td>±0.2</td> </tr> <tr> <td>100-200</td> <td>±0.25</td> </tr> <tr> <td>200-300</td> <td>±0.3</td> </tr> </table>			0-30	±0.2	30-50	±0.2	50-100	±0.2	100-200	±0.25	200-300	±0.3
0-30	±0.2																
30-50	±0.2																
50-100	±0.2																
100-200	±0.25																
200-300	±0.3																
P5	ADD P/N	2022.10.05 / RJ															
P6	CABLE CHANGE	2022.10.17 / RJ															
P7	CON 方向變更	2022.11.10 / RJ															
P8	PCB ADD C1 & PRINTING CHANGE	2022.11.14 / RJ															
P9	PATTERN CHANGE	2022.11.15 / RJ															
P10	PATTERN & CABLE CHANGE	2022.11.16 / RJ															
P11	PATTERN & PRINTING CHANGE	2022.12.14 / RJ															
P12	PATTERN & PRINTING CHANGE	2023.02.07 / RJ															
P13	PCB PRINTING ADD ASUS PN	2023.02.10 / RJ															

NOTE

- 印刷字體嚴禁有無法辨識現象
- 背膠黏貼不可溢膠
- 標記"*" 記號, 為品管檢驗之尺寸
- 標記"# " 記號, 為CPK 量測尺寸

Item	Description	QTY
6	PE保護套管 PE套管, 規格?15	1
5	Cu Foil 30.0*30.0*0.13mm	1
4	PCB 35.0*9.5*0.4mm	1
3	Cable MAIN L=100.0/1.13/Low Loss/BLACK (L=102.0mm)	1
2	Twin Adhesive DS-15, T=0.15mm	1
1	Connector IPEX 4代接頭	1

Functional Characteristics Key: (Cpk requirement) (Cpk >)

◇ Process Capability Studies required (total pcs)

◆ Ongoing Statistical Process Control Required (total pcs)

* Critical dimension need to be measured, no CPK requirement (total pcs)

ASUS P/N : 14008-05650200

Pulse (Suzhou) Wireless Products Co., Ltd.	DESIGN	RJ	20220902	P10	20221116	RJ	
	CHECKED	CHENG	20220902	P9	20221115	RJ	
APPROVED	YEN	20220902	P8	20221114	RJ		
ITEM NAME	BR1402 MAIN ANT	DOCUMENT NUMBER	TZ2486D	PART REVISION	P05	DOCUMENT VERSION	P13

Issue: 2032 DRAFT RALFYE

In the effort to improve our products, we reserve the right to make changes judged to be necessary.

CONFIDENTIAL AND PROPRIETARY INFORMATION

This document contains confidential and proprietary information of Pulse Electronics, Inc. (Pulse) and is protected by copyright, trade secret and other state and federal laws. Its receipt or possession does not convey any rights to reproduce, disclose its contents, or to manufacture, use or sell anything it may describe. Reproduction, disclosure or use without specific written authorization of Pulse is strictly forbidden.



Description: BR1402 MAIN ANT

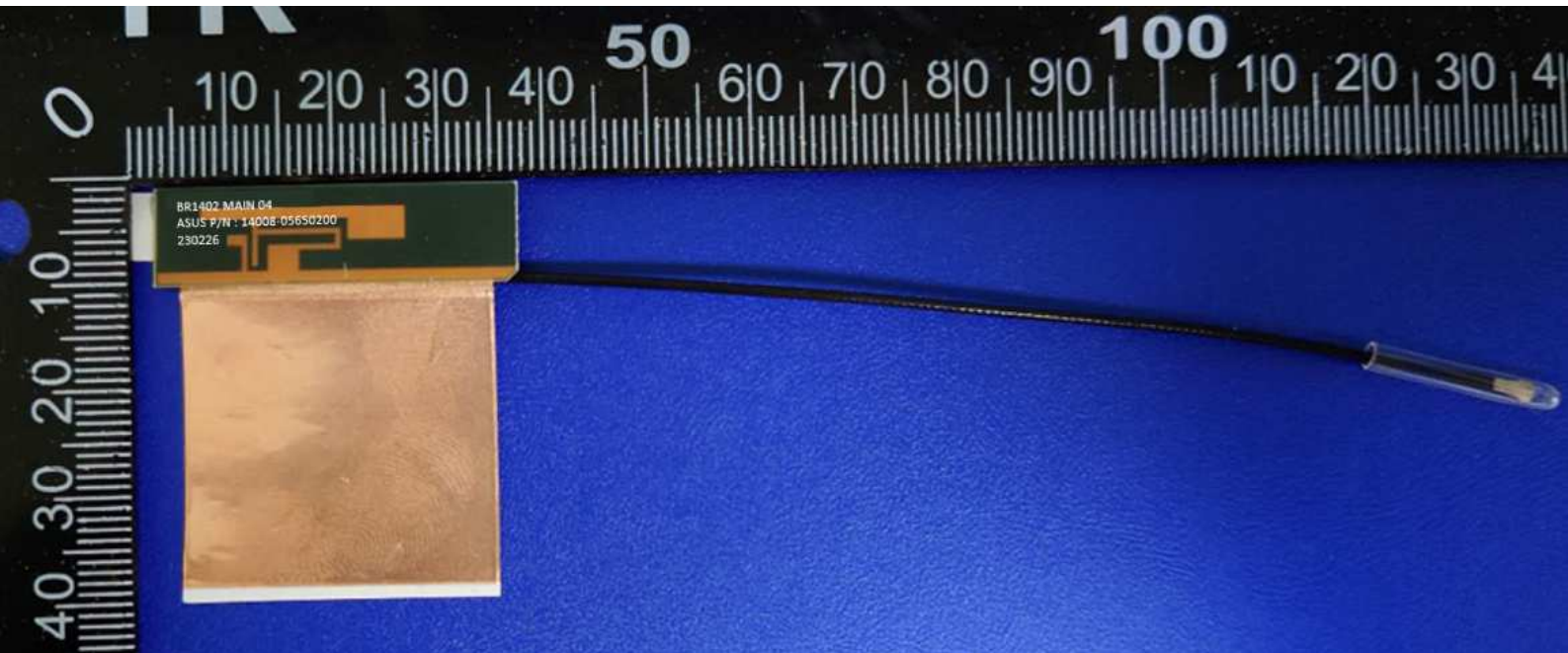
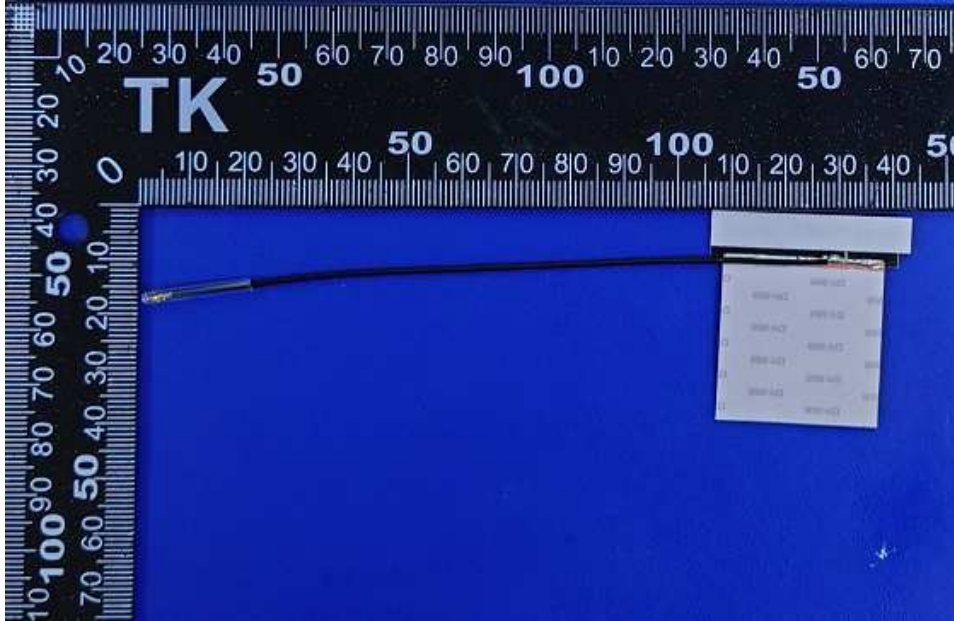


Series: BR1402 MAIN

ASUS P/N : 14008-05650200

PULSE P/N : TZ2486D

ANTENNA DRAWING



Issue: 2032 DRAFT RALFYE

In the effort to improve our products, we reserve the right to make changes judged to be necessary.
CONFIDENTIAL AND PROPRIETARY INFORMATION

This document contains confidential and proprietary information of Pulse Electronics, Inc. (Pulse) and is protected by copyright, trade secret and other state and federal laws. Its receipt or possession does not convey any rights to reproduce, disclose its contents, or to manufacture, use or sell anything it may describe. Reproduction, disclosure or use without specific written authorization of Pulse is strictly forbidden.



Description: BR1402 MAIN ANT



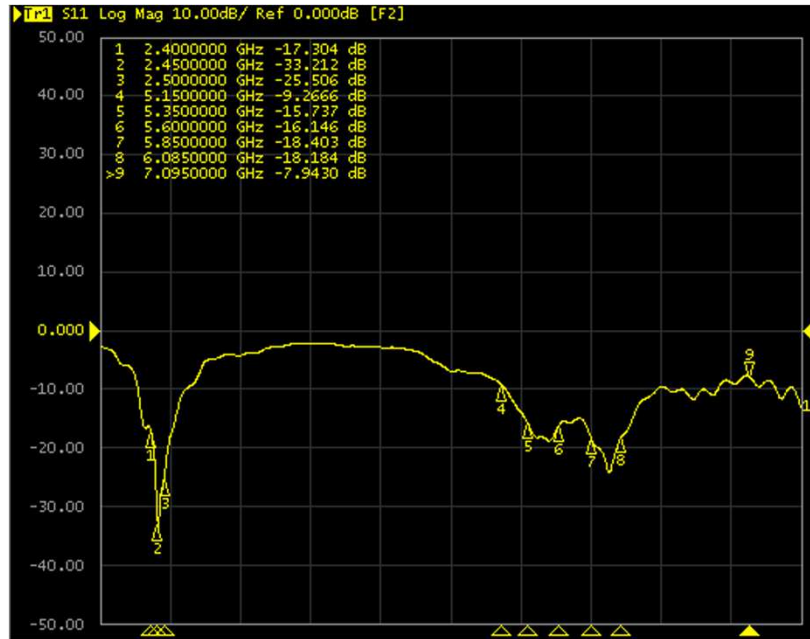
Series: BR1402 MAIN

ASUS P/N : 14008-05650200

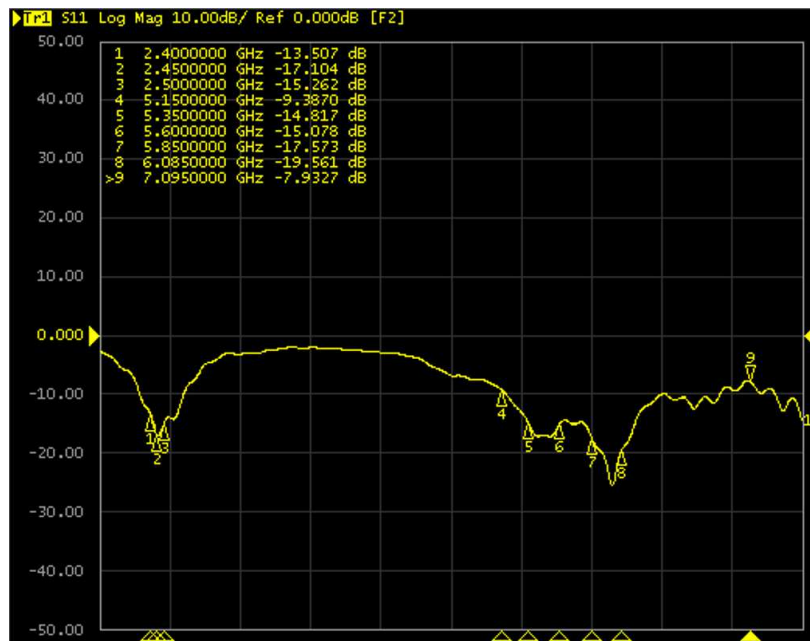
PULSE P/N : TZ2486D

TEST SETUP

NB Mode



TB Mode



Issue: 2032 DRAFT RALFYE

In the effort to improve our products, we reserve the right to make changes judged to be necessary.

CONFIDENTIAL AND PROPRIETARY INFORMATION

This document contains confidential and proprietary information of Pulse Electronics, Inc. (Pulse) and is protected by copyright, trade secret and other state and federal laws. Its receipt or possession does not convey any rights to reproduce, disclose its contents, or to manufacture, use or sell anything it may describe. Reproduction, disclosure or use without specific written authorization of Pulse is strictly forbidden.



Description: BR1402 MAIN ANT



Series: BR1402 MAIN

ASUS P/N : 14008-05650200

PULSE P/N : TZ2486D

EFFICIENCY

NB Mode

TB Mode

main	Frequency	Efficiency	Gain
	2400	-3.81	2.73
	2412	-3.64	2.71
	2437	-3.34	2.69
	2462	-3.27	2.67
	2500	-2.91	2.71
	5150	-3.32	3.43
	5250	-3.46	3.43
	5350	-3.26	3.42
	5470	-3.29	4.25
	5600	-3.78	4.22
	5725	-3.09	4.25
	5785	-3.44	4.42
	5850	-3.73	4.21
	5895	-3.73	4.12
	5925	-4.25	3.64
	6125	-5.31	2.51
	6425	-5.36	2.08
	6525	-5.94	1.68
	6725	-5.70	2.15
	6875	-6.12	1.41
	6925	-6.03	1.75
	7125	-6.34	1.93

main	Frequency	Efficiency	Gain
	2400	-4.10	2.68
	2412	-4.09	2.69
	2437	-4.24	2.70
	2462	-4.41	2.71
	2500	-4.07	2.70
	5150	-3.67	3.41
	5250	-4.03	3.34
	5350	-3.70	3.45
	5470	-3.65	4.24
	5600	-3.83	4.23
	5725	-3.96	4.49
	5785	-4.04	4.18
	5850	-3.98	4.15
	5895	-4.21	4.06
	5925	-4.78	3.50
	6125	-4.86	3.28
	6425	-6.11	2.60
	6525	-5.70	2.64
	6725	-5.80	3.24
	6875	-6.62	3.49
	6925	-6.91	3.23
	7125	-7.04	2.78

Issue: 2032 DRAFT RALFYE

In the effort to improve our products, we reserve the right to make changes judged to be necessary.
CONFIDENTIAL AND PROPRIETARY INFORMATION

This document contains confidential and proprietary information of Pulse Electronics, Inc. (Pulse) and is protected by copyright, trade secret and other state and federal laws. Its receipt or possession does not convey any rights to reproduce, disclose its contents, or to manufacture, use or sell anything it may describe. Reproduction, disclosure or use without specific written authorization of Pulse is strictly forbidden.



Description: BR1402 MAIN ANT



Series: BR1402 MAIN

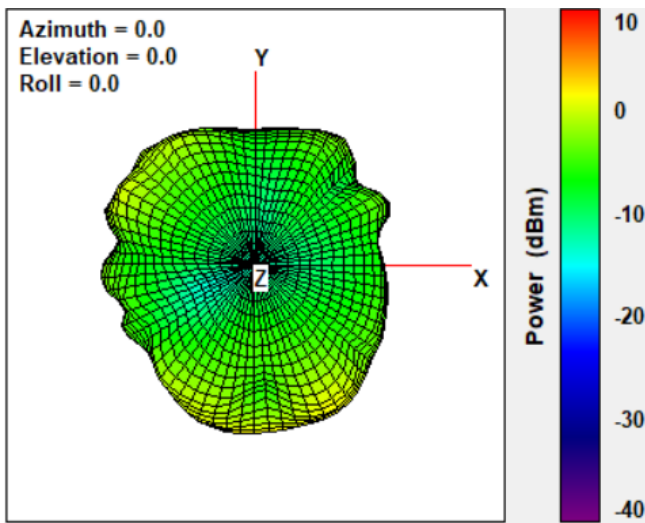
ASUS P/N : 14008-05650200

PULSE P/N : TZ2486D

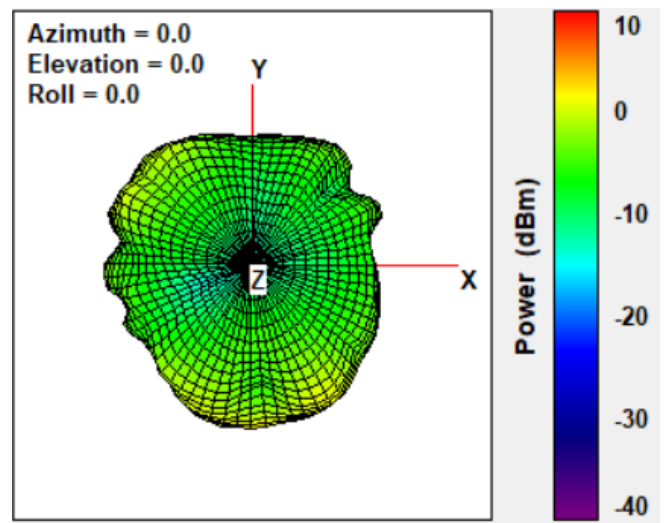
CHARTS

NB Mode

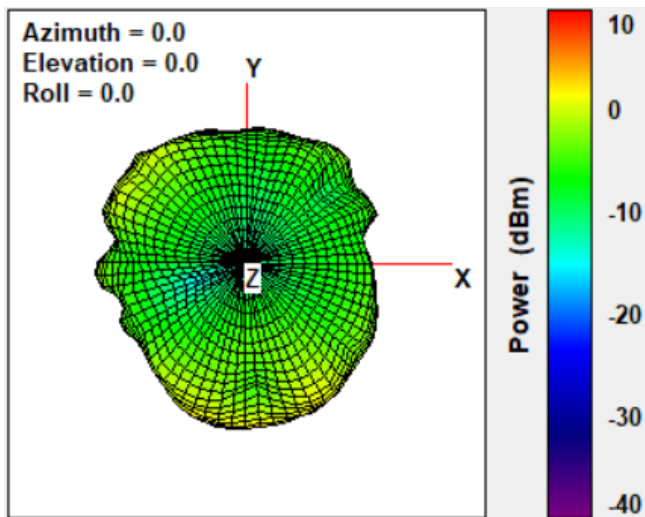
Radiation Pattern of WLAN Antenna (2400MHz)



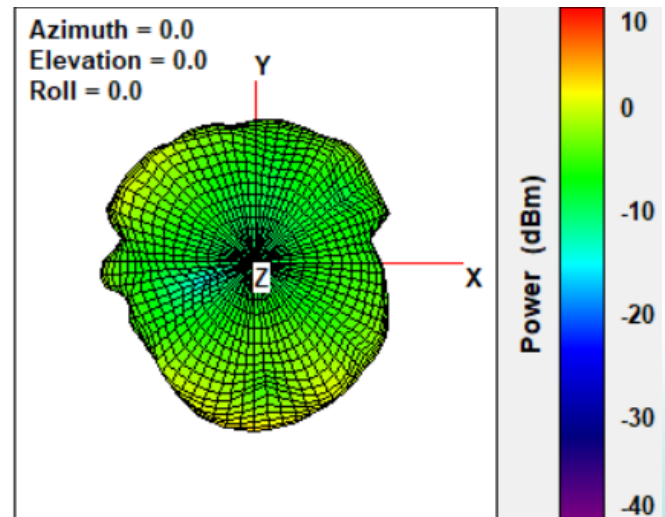
Radiation Pattern of WLAN Antenna (2412MHz)



Radiation Pattern of WLAN Antenna (2437MHz)



Radiation Pattern of WLAN Antenna (2462MHz)



Issue: 2032 DRAFT RALFYE

In the effort to improve our products, we reserve the right to make changes judged to be necessary.
CONFIDENTIAL AND PROPRIETARY INFORMATION

This document contains confidential and proprietary information of Pulse Electronics, Inc. (Pulse) and is protected by copyright, trade secret and other state and federal laws. Its receipt or possession does not convey any rights to reproduce, disclose its contents, or to manufacture, use or sell anything it may describe. Reproduction, disclosure or use without specific written authorization of Pulse is strictly forbidden.



Description: BR1402 MAIN ANT



Series: BR1402 MAIN

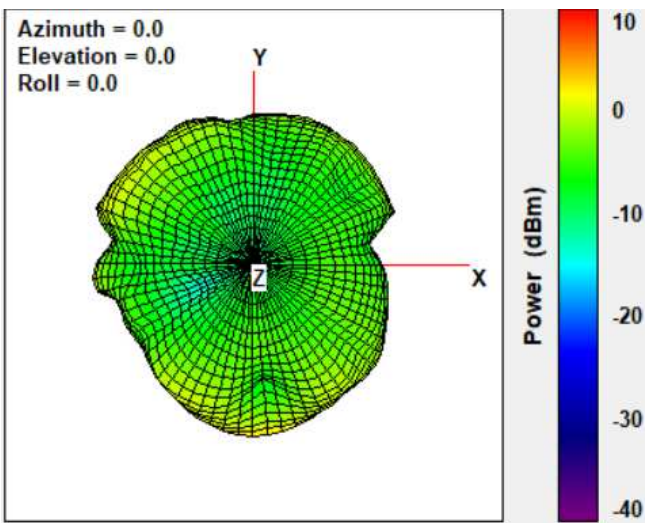
ASUS P/N : 14008-05650200

PULSE P/N : TZ2486D

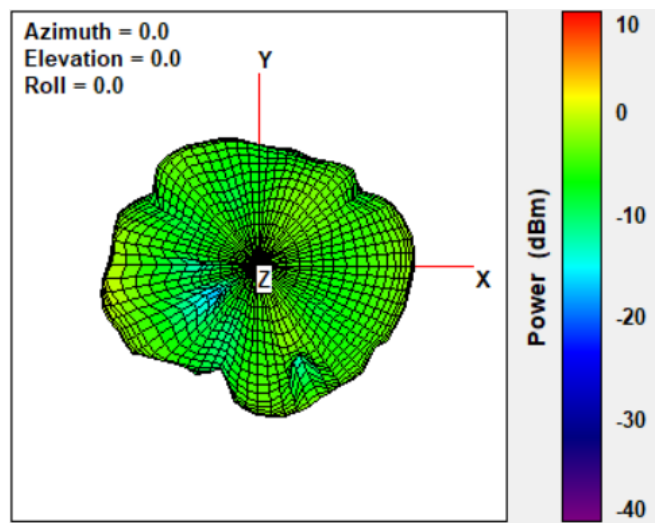
CHARTS

NB Mode

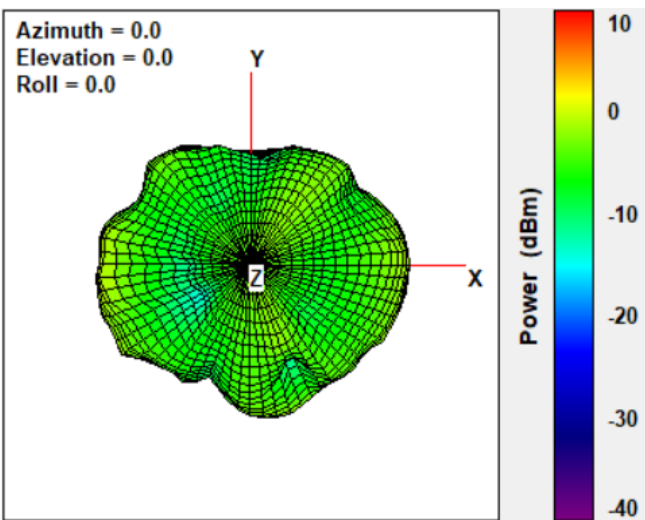
Radiation Pattern of WLAN Antenna (2500MHz)



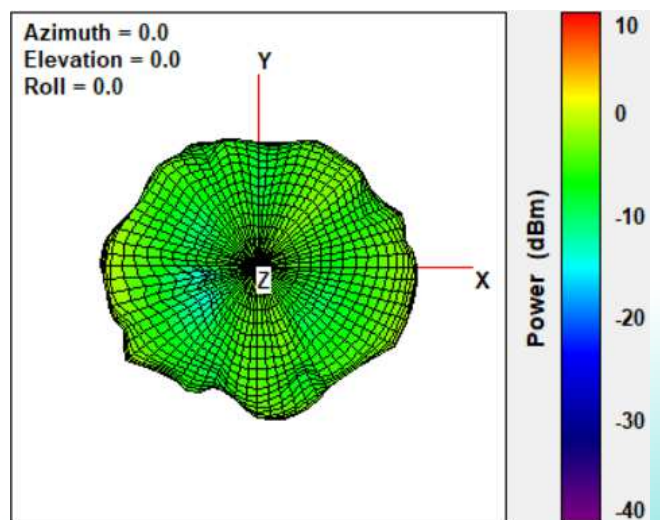
Radiation Pattern of WLAN Antenna (5150MHz)



Radiation Pattern of WLAN Antenna (5250MHz)



Radiation Pattern of WLAN Antenna (5350MHz)



Issue: 2032 DRAFT RALFYE

In the effort to improve our products, we reserve the right to make changes judged to be necessary.

CONFIDENTIAL AND PROPRIETARY INFORMATION

This document contains confidential and proprietary information of Pulse Electronics, Inc. (Pulse) and is protected by copyright, trade secret and other state and federal laws. Its receipt or possession does not convey any rights to reproduce, disclose its contents, or to manufacture, use or sell anything it may describe. Reproduction, disclosure or use without specific written authorization of Pulse is strictly forbidden.



Description: BR1402 MAIN ANT



Series: BR1402 MAIN

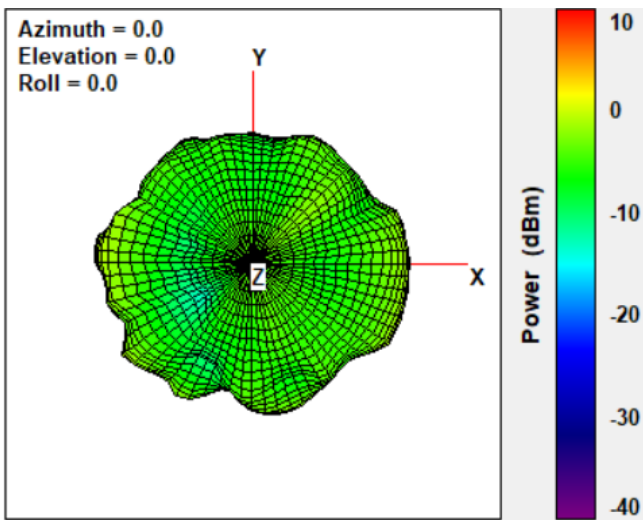
ASUS P/N : 14008-05650200

PULSE P/N : TZ2486D

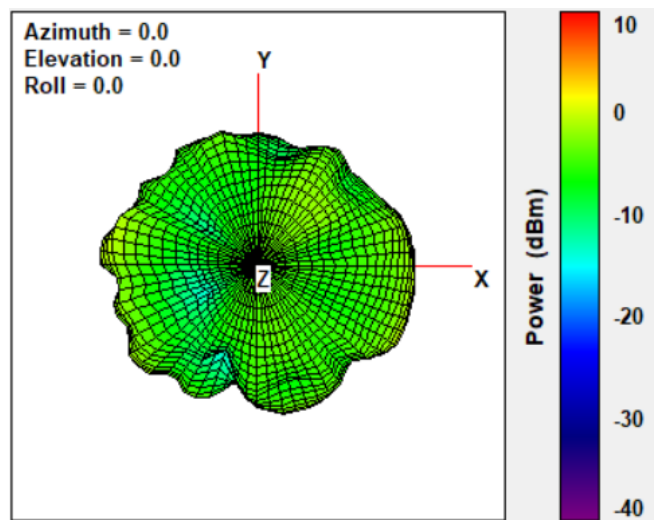
CHARTS

NB Mode

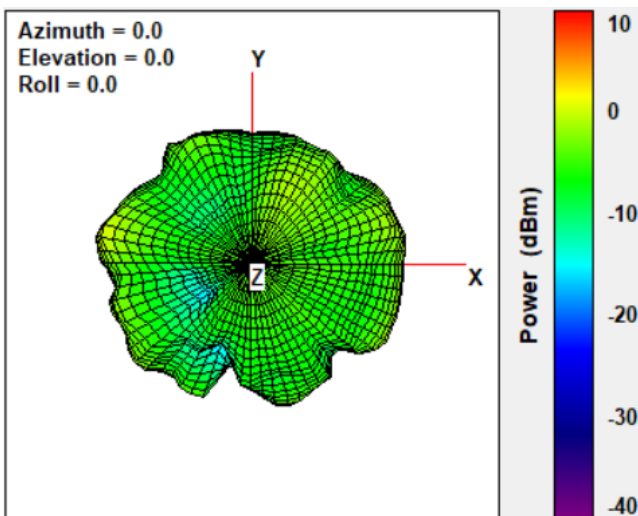
Radiation Pattern of WLAN Antenna (5470MHz)



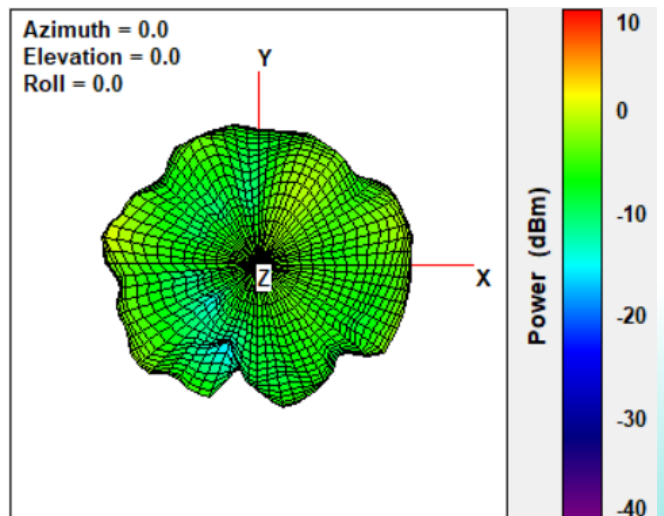
Radiation Pattern of WLAN Antenna (5600MHz)



Radiation Pattern of WLAN Antenna (5725MHz)



Radiation Pattern of WLAN Antenna (5785MHz)



Issue: 2032 DRAFT RALFYE

In the effort to improve our products, we reserve the right to make changes judged to be necessary.

CONFIDENTIAL AND PROPRIETARY INFORMATION

This document contains confidential and proprietary information of Pulse Electronics, Inc. (Pulse) and is protected by copyright, trade secret and other state and federal laws. Its receipt or possession does not convey any rights to reproduce, disclose its contents, or to manufacture, use or sell anything it may describe. Reproduction, disclosure or use without specific written authorization of Pulse is strictly forbidden.



Description: BR1402 MAIN ANT



Series: BR1402 MAIN

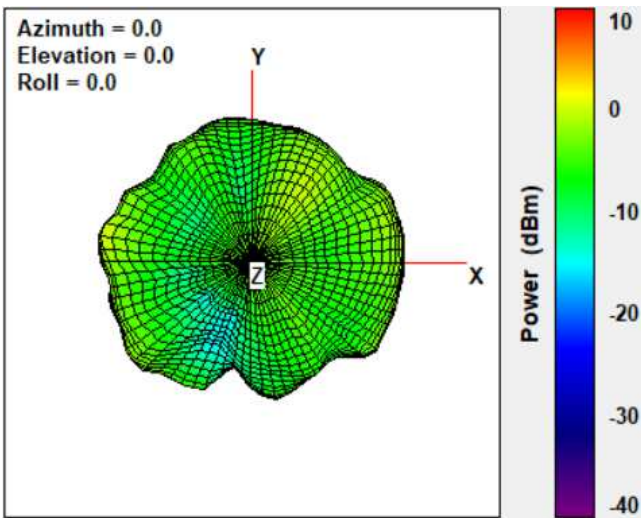
ASUS P/N : 14008-05650200

PULSE P/N : TZ2486D

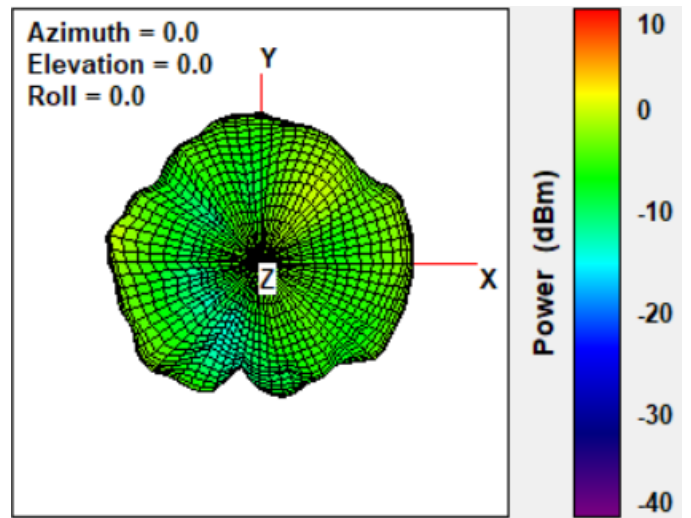
CHARTS

NB Mode

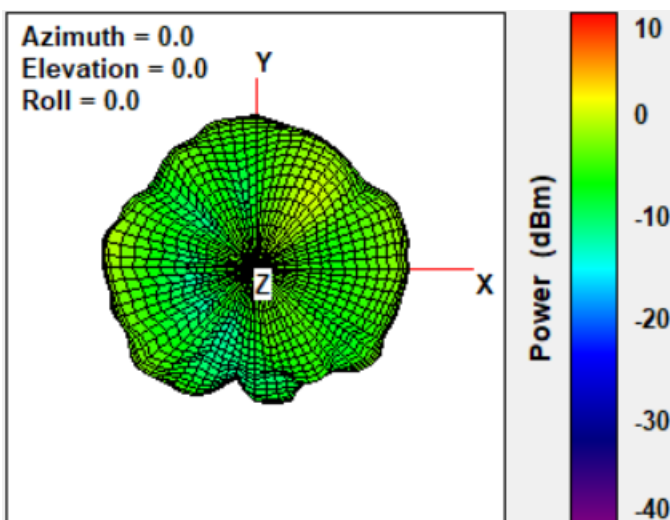
Radiation Pattern of WLAN Antenna (5850MHz)



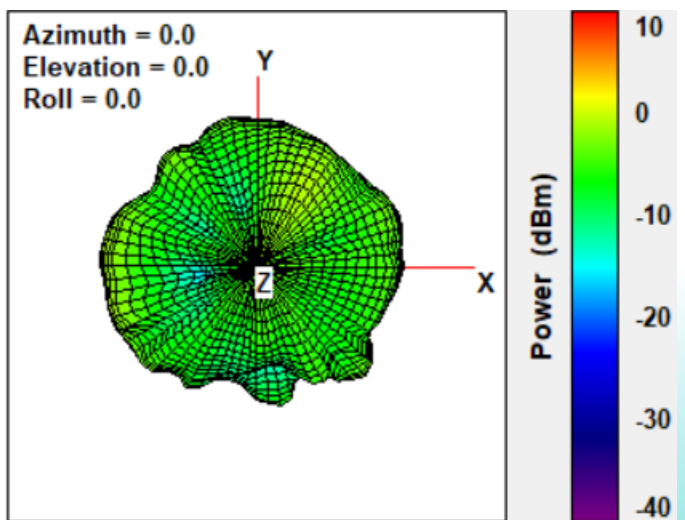
Radiation Pattern of WLAN Antenna (5895MHz)



Radiation Pattern of WLAN Antenna (5925MHz)



Radiation Pattern of WLAN Antenna (6125MHz)



Issue: 2032 DRAFT RALFYE

In the effort to improve our products, we reserve the right to make changes judged to be necessary.

CONFIDENTIAL AND PROPRIETARY INFORMATION

This document contains confidential and proprietary information of Pulse Electronics, Inc. (Pulse) and is protected by copyright, trade secret and other state and federal laws. Its receipt or possession does not convey any rights to reproduce, disclose its contents, or to manufacture, use or sell anything it may describe. Reproduction, disclosure or use without specific written authorization of Pulse is strictly forbidden.



Description: BR1402 MAIN ANT



Series: BR1402 MAIN

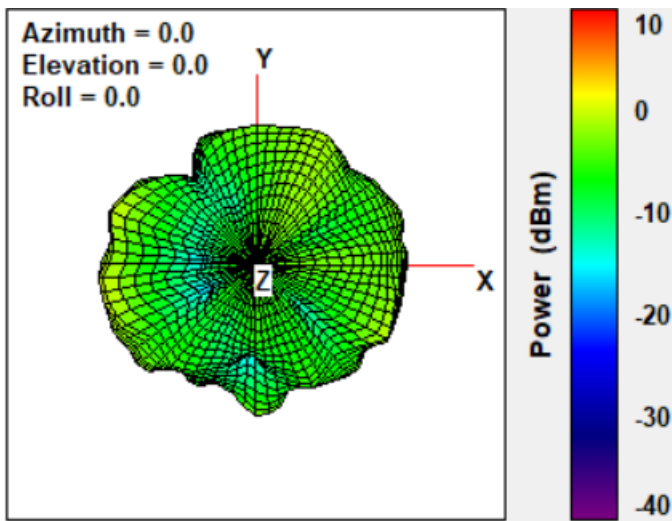
ASUS P/N : 14008-05650200

PULSE P/N : TZ2486D

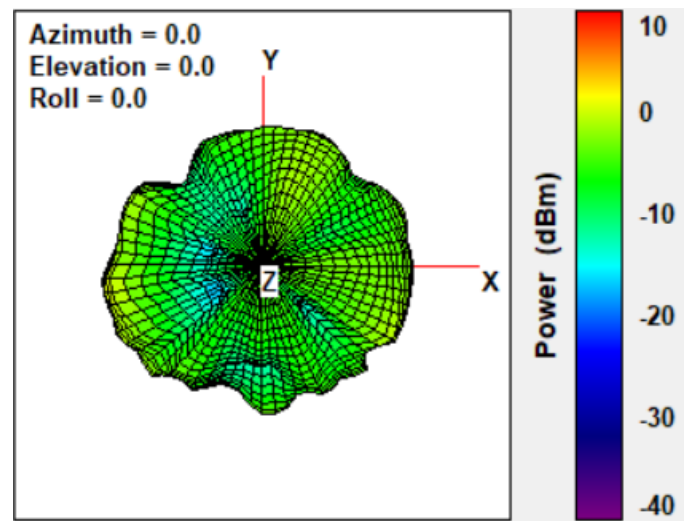
CHARTS

NB Mode

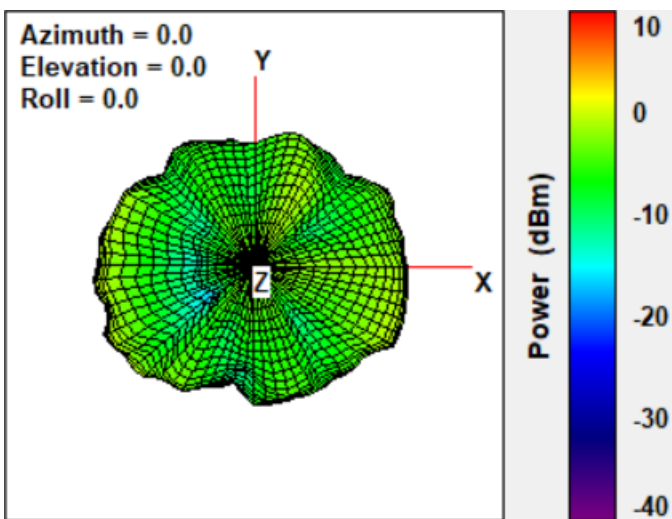
Radiation Pattern of WLAN Antenna (6425MHz)



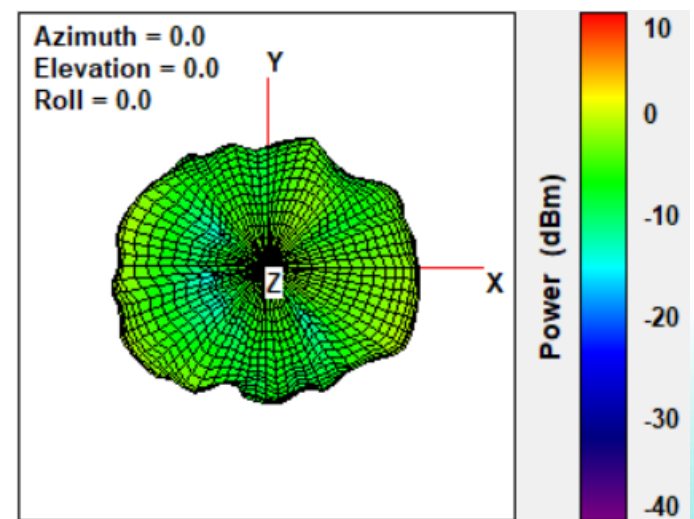
Radiation Pattern of WLAN Antenna (6525MHz)



Radiation Pattern of WLAN Antenna (6725MHz)



Radiation Pattern of WLAN Antenna (6875MHz)



Issue: 2032 DRAFT RALFYE

In the effort to improve our products, we reserve the right to make changes judged to be necessary.
CONFIDENTIAL AND PROPRIETARY INFORMATION

This document contains confidential and proprietary information of Pulse Electronics, Inc. (Pulse) and is protected by copyright, trade secret and other state and federal laws. Its receipt or possession does not convey any rights to reproduce, disclose its contents, or to manufacture, use or sell anything it may describe. Reproduction, disclosure or use without specific written authorization of Pulse is strictly forbidden.



Description: BR1402 MAIN ANT



Series: BR1402 MAIN

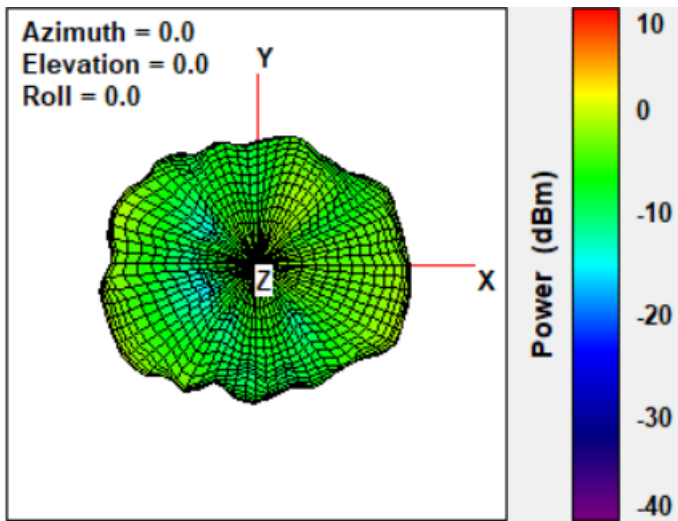
ASUS P/N : 14008-05650200

PULSE P/N : TZ2486D

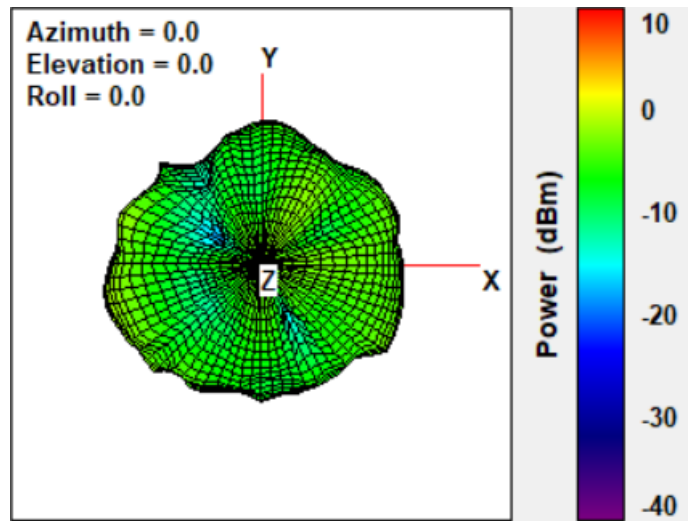
CHARTS

NB Mode

Radiation Pattern of WLAN Antenna (6925MHz)



Radiation Pattern of WLAN Antenna (7125MHz)



Issue: 2032 DRAFT RALFYE

In the effort to improve our products, we reserve the right to make changes judged to be necessary.
CONFIDENTIAL AND PROPRIETARY INFORMATION

This document contains confidential and proprietary information of Pulse Electronics, Inc. (Pulse) and is protected by copyright, trade secret and other state and federal laws. Its receipt or possession does not convey any rights to reproduce, disclose its contents, or to manufacture, use or sell anything it may describe. Reproduction, disclosure or use without specific written authorization of Pulse is strictly forbidden.



Description: BR1402 MAIN ANT



Series: BR1402 MAIN

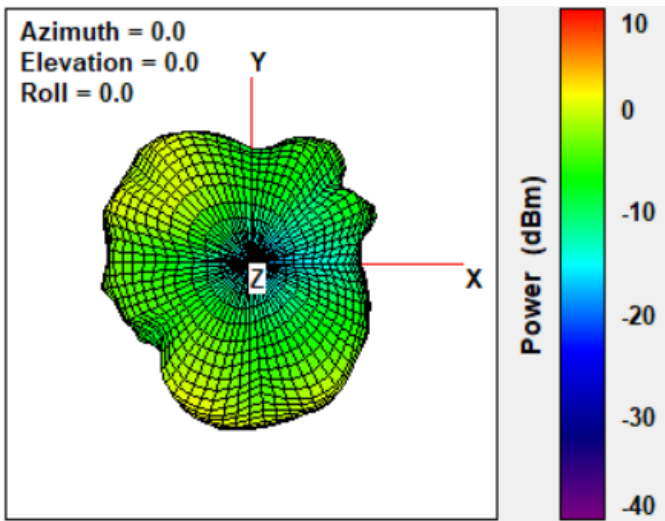
ASUS P/N : 14008-05650200

PULSE P/N : TZ2486D

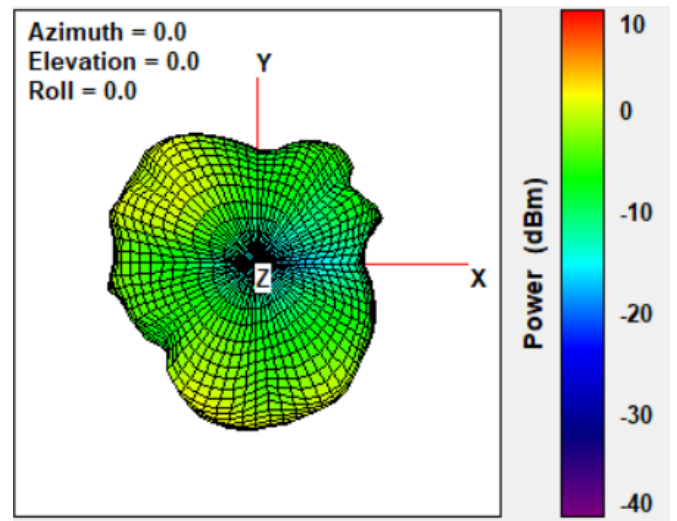
CHARTS

TB Mode

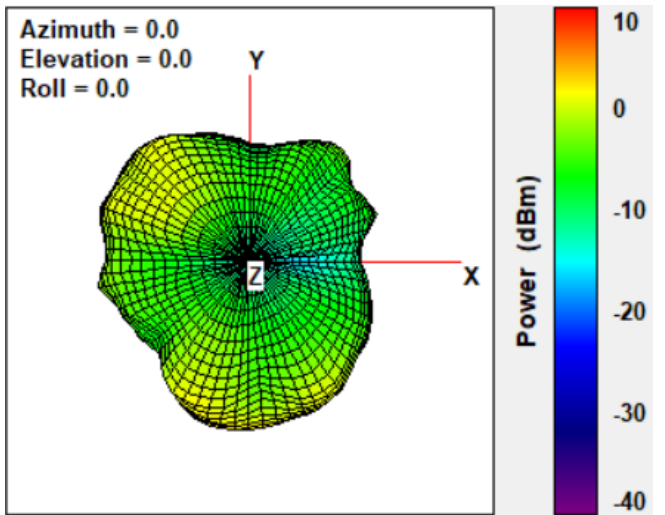
Radiation Pattern of WLAN Antenna (2400MHz)



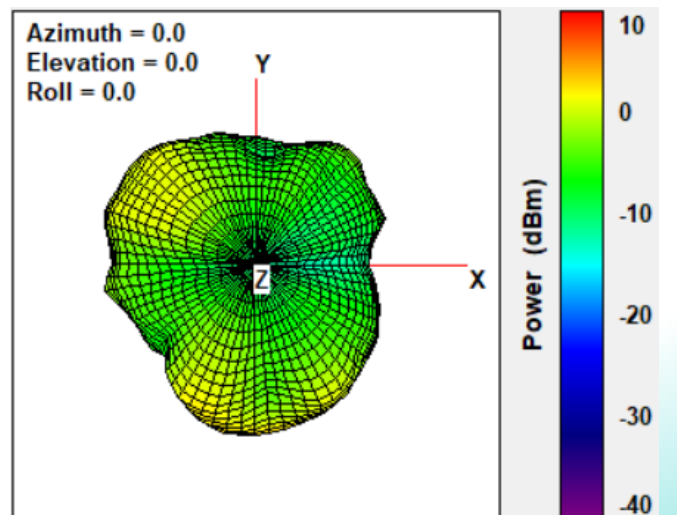
Radiation Pattern of WLAN Antenna (2412MHz)



Radiation Pattern of WLAN Antenna (2437MHz)



Radiation Pattern of WLAN Antenna (2462MHz)



Issue: 2032 DRAFT RALFYE

In the effort to improve our products, we reserve the right to make changes judged to be necessary.
CONFIDENTIAL AND PROPRIETARY INFORMATION

This document contains confidential and proprietary information of Pulse Electronics, Inc. (Pulse) and is protected by copyright, trade secret and other state and federal laws. Its receipt or possession does not convey any rights to reproduce, disclose its contents, or to manufacture, use or sell anything it may describe. Reproduction, disclosure or use without specific written authorization of Pulse is strictly forbidden.



Description: BR1402 MAIN ANT



Series: BR1402 MAIN

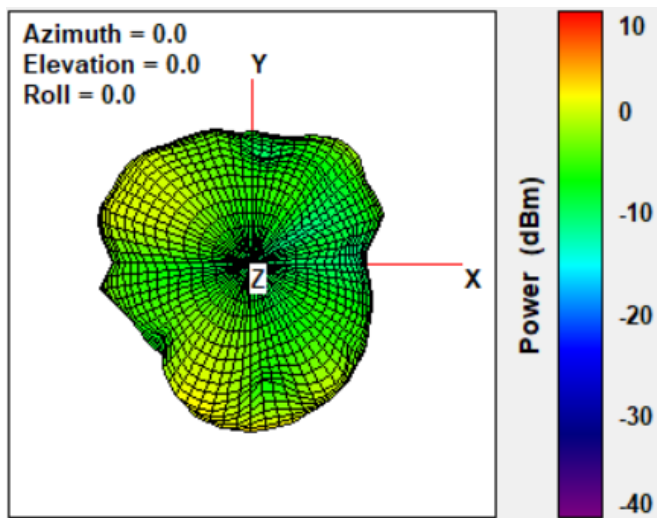
ASUS P/N : 14008-05650200

PULSE P/N : TZ2486D

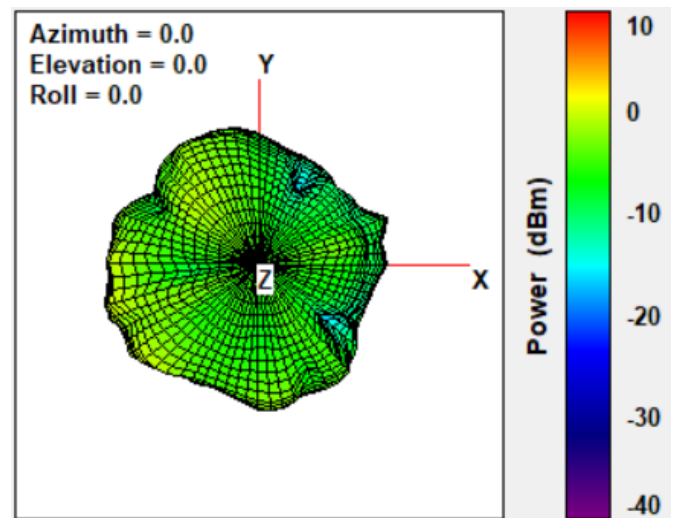
CHARTS

TB Mode

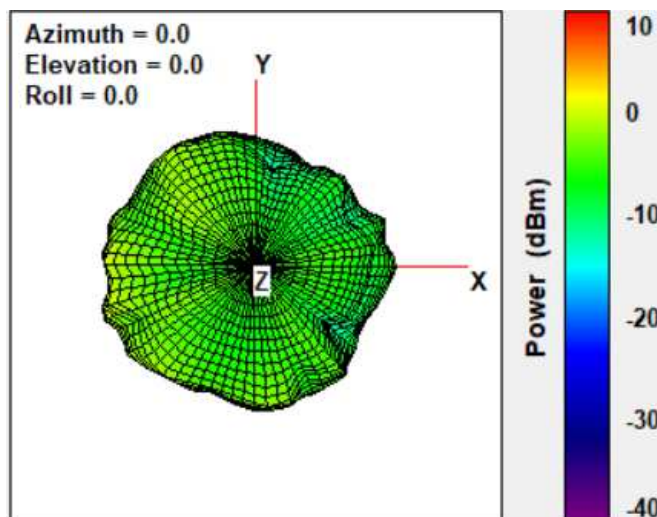
Radiation Pattern of WLAN Antenna (2500MHz)



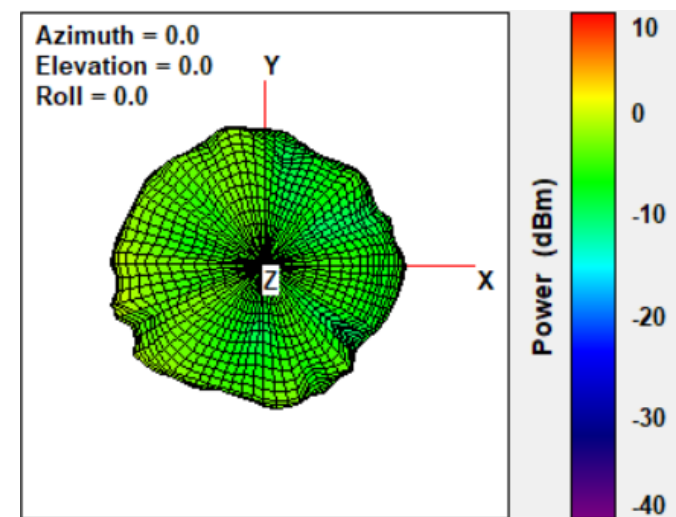
Radiation Pattern of WLAN Antenna (5150MHz)



Radiation Pattern of WLAN Antenna (5250MHz)



Radiation Pattern of WLAN Antenna (5350MHz)



Issue: 2032 DRAFT RALFYE

In the effort to improve our products, we reserve the right to make changes judged to be necessary.
CONFIDENTIAL AND PROPRIETARY INFORMATION

This document contains confidential and proprietary information of Pulse Electronics, Inc. (Pulse) and is protected by copyright, trade secret and other state and federal laws. Its receipt or possession does not convey any rights to reproduce, disclose its contents, or to manufacture, use or sell anything it may describe. Reproduction, disclosure or use without specific written authorization of Pulse is strictly forbidden.



Description: BR1402 MAIN ANT



Series: BR1402 MAIN

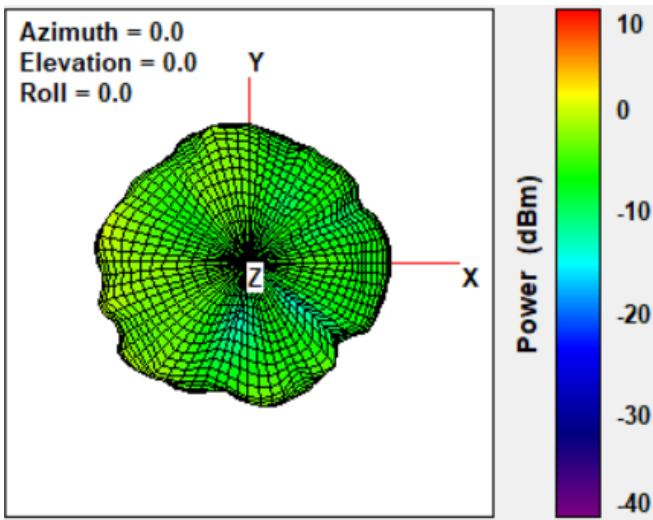
ASUS P/N : 14008-05650200

PULSE P/N : TZ2486D

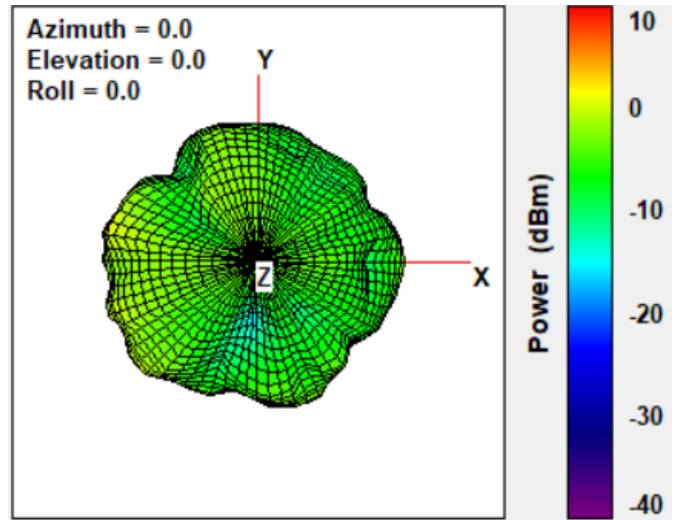
CHARTS

TB Mode

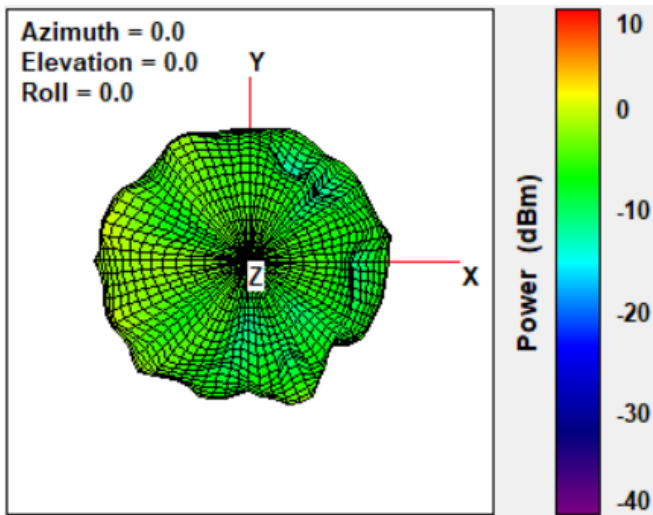
Radiation Pattern of WLAN Antenna (5470MHz)



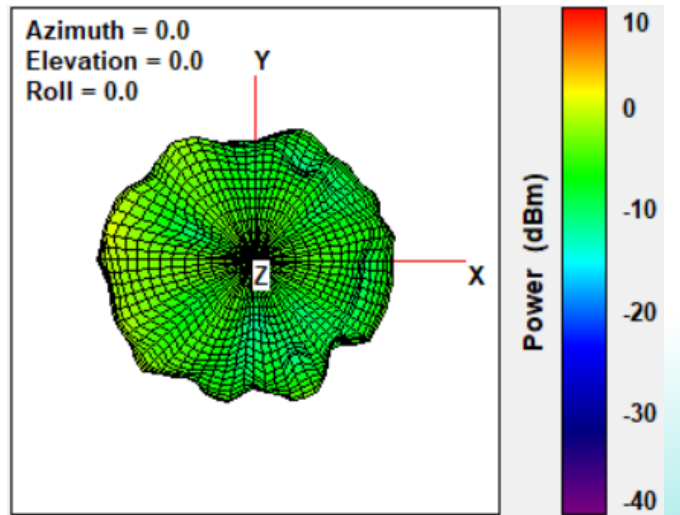
Radiation Pattern of WLAN Antenna (5600MHz)



Radiation Pattern of WLAN Antenna (5725MHz)



Radiation Pattern of WLAN Antenna (5785MHz)



Issue: 2032 DRAFT RALFYE

In the effort to improve our products, we reserve the right to make changes judged to be necessary.

CONFIDENTIAL AND PROPRIETARY INFORMATION

This document contains confidential and proprietary information of Pulse Electronics, Inc. (Pulse) and is protected by copyright, trade secret and other state and federal laws. Its receipt or possession does not convey any rights to reproduce, disclose its contents, or to manufacture, use or sell anything it may describe. Reproduction, disclosure or use without specific written authorization of Pulse is strictly forbidden.



Description: BR1402 MAIN ANT



Series: BR1402 MAIN

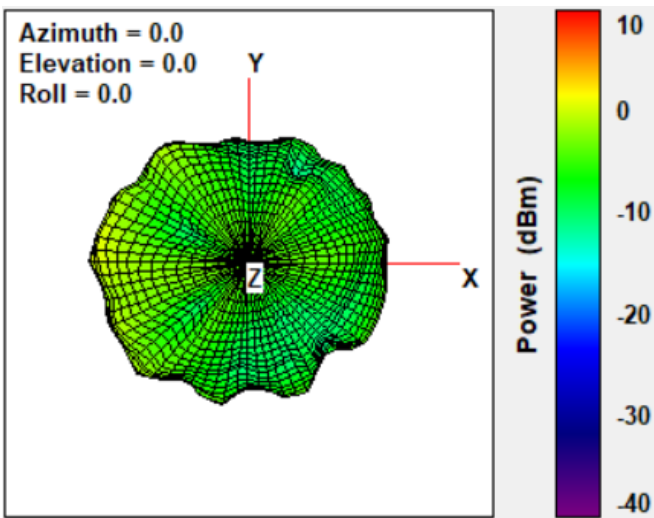
ASUS P/N : 14008-05650200

PULSE P/N : TZ2486D

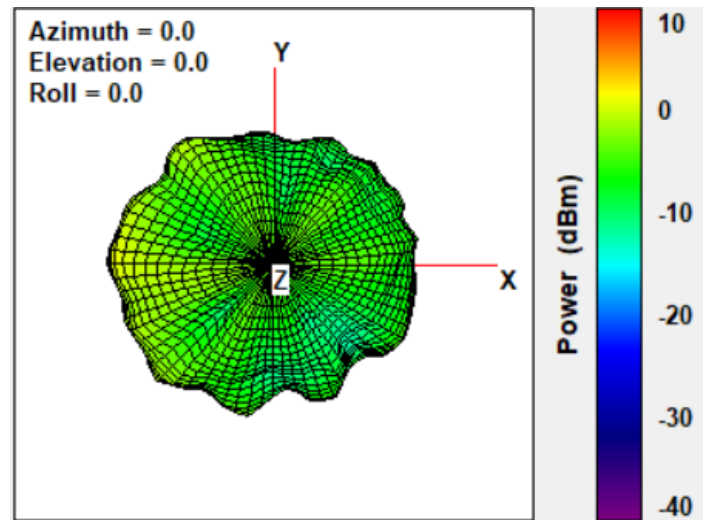
CHARTS

TB Mode

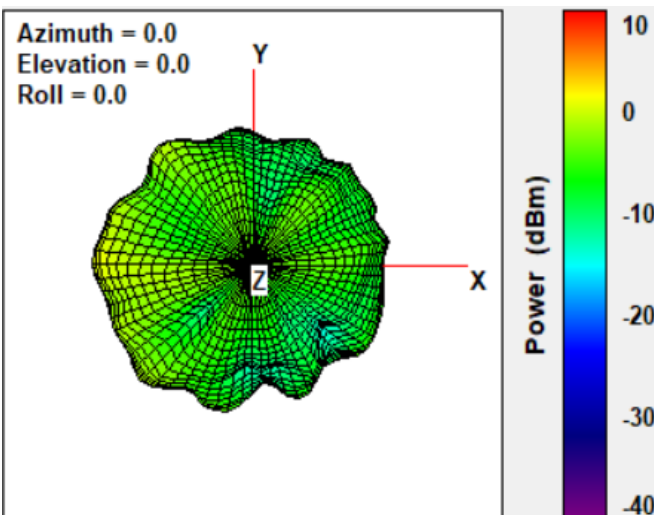
Radiation Pattern of WLAN Antenna (5850MHz)



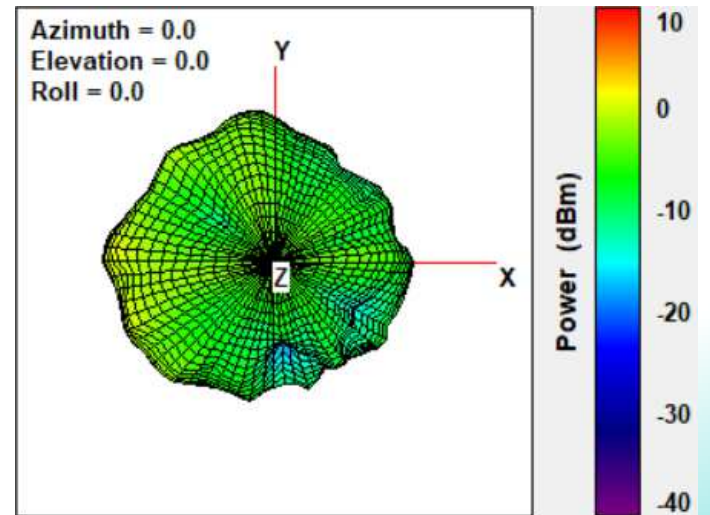
Radiation Pattern of WLAN Antenna (5895MHz)



Radiation Pattern of WLAN Antenna (5925MHz)



Radiation Pattern of WLAN Antenna (6125MHz)



Issue: 2032 DRAFT RALFYE

In the effort to improve our products, we reserve the right to make changes judged to be necessary.
CONFIDENTIAL AND PROPRIETARY INFORMATION

This document contains confidential and proprietary information of Pulse Electronics, Inc. (Pulse) and is protected by copyright, trade secret and other state and federal laws. Its receipt or possession does not convey any rights to reproduce, disclose its contents, or to manufacture, use or sell anything it may describe. Reproduction, disclosure or use without specific written authorization of Pulse is strictly forbidden.



Description: BR1402 MAIN ANT



Series: BR1402 MAIN

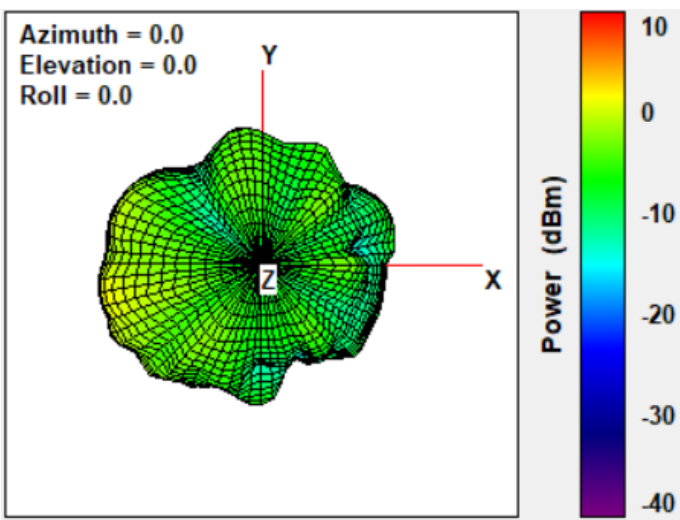
ASUS P/N : 14008-05650200

PULSE P/N : TZ2486D

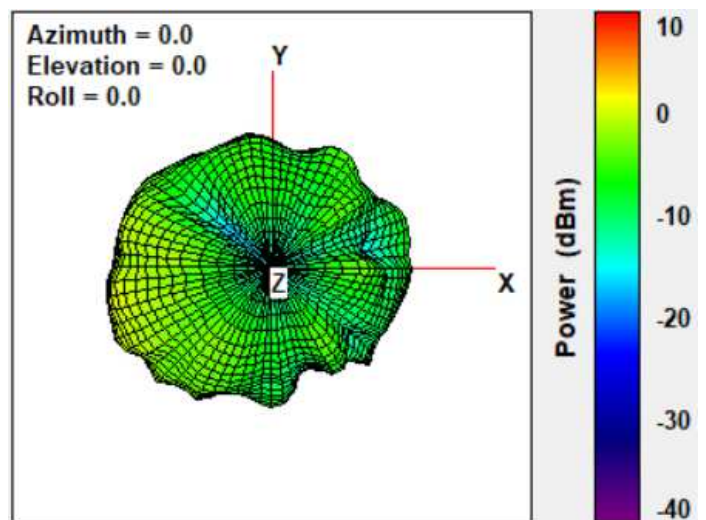
CHARTS

NB Mode

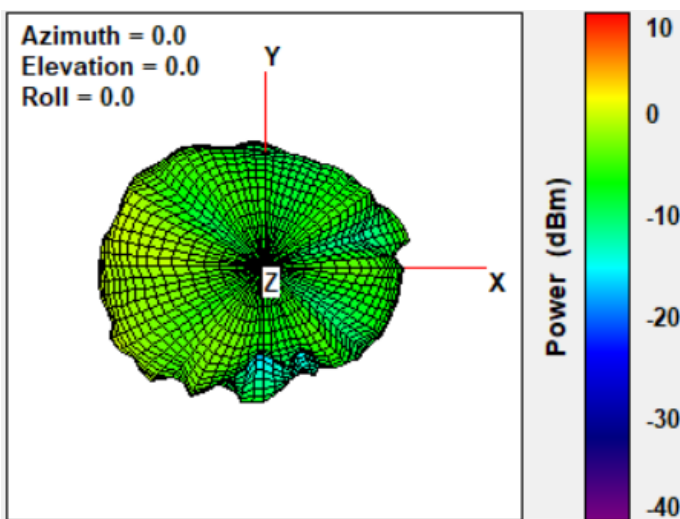
Radiation Pattern of WLAN Antenna (6425MHz)



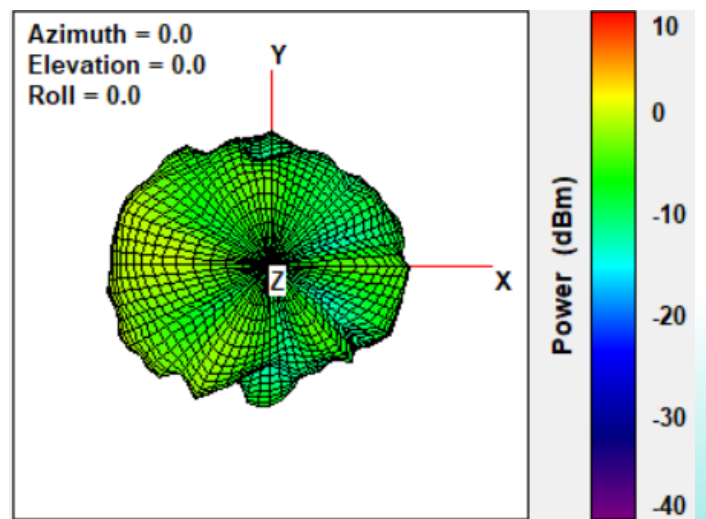
Radiation Pattern of WLAN Antenna (6525MHz)



Radiation Pattern of WLAN Antenna (6725MHz)



Radiation Pattern of WLAN Antenna (6875MHz)



Issue: 2032 DRAFT RALFYE

In the effort to improve our products, we reserve the right to make changes judged to be necessary.
CONFIDENTIAL AND PROPRIETARY INFORMATION

This document contains confidential and proprietary information of Pulse Electronics, Inc. (Pulse) and is protected by copyright, trade secret and other state and federal laws. Its receipt or possession does not convey any rights to reproduce, disclose its contents, or to manufacture, use or sell anything it may describe. Reproduction, disclosure or use without specific written authorization of Pulse is strictly forbidden.



Description: BR1402 MAIN ANT



Series: BR1402 MAIN

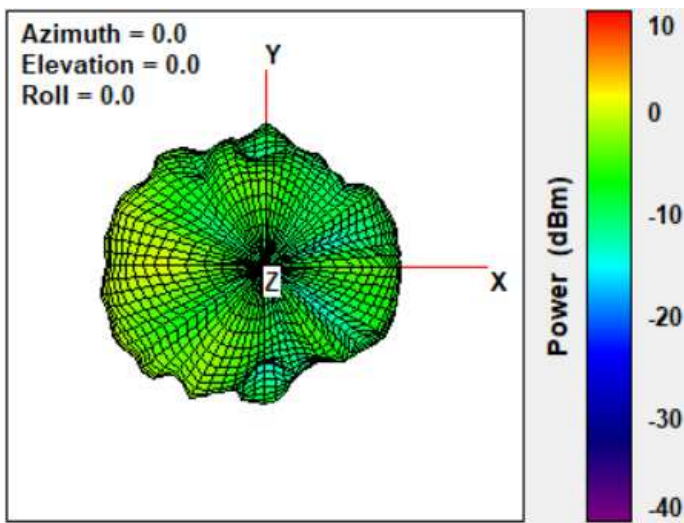
ASUS P/N : 14008-05650200

PULSE P/N : TZ2486D

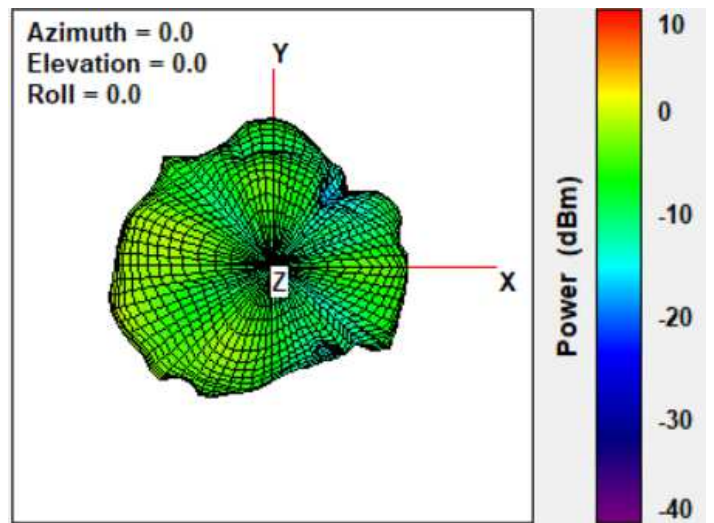
CHARTS

NB Mode

Radiation Pattern of WLAN Antenna (6925MHz)



Radiation Pattern of WLAN Antenna (7125MHz)



Issue: 2032 DRAFT RALFYE

In the effort to improve our products, we reserve the right to make changes judged to be necessary.
CONFIDENTIAL AND PROPRIETARY INFORMATION

This document contains confidential and proprietary information of Pulse Electronics, Inc. (Pulse) and is protected by copyright, trade secret and other state and federal laws. Its receipt or possession does not convey any rights to reproduce, disclose its contents, or to manufacture, use or sell anything it may describe. Reproduction, disclosure or use without specific written authorization of Pulse is strictly forbidden.





ZPMV2.E520266 - Wiring, Printed - Component

Wiring, Printed - Component

Anhui Yongda Electronic Technology Co.,Ltd

Building 13 PCB Industrial Park Pengju Road
Guangde, 242200 China

E520266

Type	Cond Width		Max					Assembly		Max		Meets C	
	Min	Min	Cond	SS/	Area	Solder	Solder		Oper	Flame	UL796	T	
	mm(in)	mm(in)	Thk	DS/	Diam	Limits	Process (IPC)	Cycles	Temp	Class	DSR	I	
Multilayer printed wiring boards													
YD-2	0.1 (0.004)	0.1 (0.004)	17 (0.67)	DS	25.4 (1)	288	20	-	-	130	V-0	All	*
Single layer metal base printed wiring boards, employing metal base laminate													
YD-3	0.138 (0.005)	0.414 (0.016)	18 (0.71)	SS	50.8 (2)	288	20	-	-	130	V-0	All	*
Single layer printed wiring boards													
YD-1	0.1 (0.004)	0.1 (0.004)	17 (0.67)	DS	25.4 (1)	288	20	-	-	130	V-0	All	*

* - CTI marking is optional and may be marked on the printed wiring board.

Marking: Company name, type designation. May be followed by a suffix to denote factory identification or burning test classification.

Last Updated on 2021-04-07

并不是所有出现在本数据库中的公司名称和产品都满足了UL跟踪检验服务的要求。只有带有UL标志的产品，才应该被视为经过UL认证，并满足UL跟踪检验服务的要求。注意查看产品上的标志。

UL允许在线认证目录中所含材料的复制遵循以下条件：1.指南信息、装配、构造、设计、系统和/或认证（文件）必须在不篡改任何数据（或图纸）的情况下完整且无误导性地呈现。2.“经UL允许从在线认证目录转载”声明必须出现在所摘录材料的邻近位置。此外，转载材料必须包含以下格式的版权声明：“© 2021 UL LLC”



AVLV2.E318898 Appliance Wiring Material - Component

Page Bottom

Appliance Wiring Material - Component

See General Information for Appliance Wiring Material - Component

SHENYU COMMUNICATION TECHNOLOGY INC

E318898

275 E Waihuan Rd

Jiangyin, Jiangsu 214400 CHINA

Table of Recognized Styles							
Single-conductor, thermoplastic insulation.							
<u>1007</u>	<u>1333</u>	<u>1589</u>	<u>1723</u>	<u>1858</u>	<u>1901</u>	<u>10111</u>	
<u>1226</u>	1354	<u>1591</u>	<u>1726</u>	<u>1859</u>	<u>1927</u>	<u>10248</u>	
<u>1227</u>	<u>1371</u>	<u>1592</u>	<u>1727</u>	<u>1860</u>	<u>10005</u>	<u>10362</u>	
<u>1330</u>	<u>1538</u>	<u>1708</u>	<u>1766</u>	<u>1882</u>	<u>10011</u>	<u>10518</u>	
<u>1331</u>	<u>1571</u>	<u>1709</u>	<u>1847</u>	<u>1886</u>	<u>10064</u>	<u>11149</u>	
<u>1332</u>	<u>1577</u>	<u>1710</u>	<u>1857</u>	<u>1887</u>	<u>10072</u>		
Multiple-conductor, thermoplastic insulation.							
<u>2464</u>	<u>2725</u>	<u>20276</u>	<u>21100</u>				

Marking: Company name, voltage rating, temperature rating, conductor size, conductor material if other than copper, and use.

Last Updated on 2016-06-13

Questions?

Print this page

Terms of Use

Page Top

◆ 2016 UL LLC

The appearance of a company's name or product in this database does not in itself assure that products so identified have been manufactured under UL's Follow-Up Service. Only those products bearing the UL Mark should be considered to be Certified and covered under UL's Follow-Up Service. Always look for the Mark on the product.

UL permits the reproduction of the material contained in the Online Certification Directory subject to the following conditions: 1. The Guide Information, Assemblies, Constructions, Designs, Systems, and/or Certifications (files) must be presented in their entirety and in a non-misleading manner, without any manipulation of the data (or drawings). 2. The statement "Reprinted from the Online Certifications Directory with permission from UL" must appear adjacent to the extracted material. In addition, the reprinted material must include a copyright notice in the following format: "© 2016 UL LLC".

Standard Appliance Wiring Material UL 758.

Marking General.

Use Internal wiring of Class 2 circuits of
electronic equipment or as insulated single
in jacketed multiconductor cables.



ZPFW2.E491030 - Wiring Harnesses - Component

Note: We are enhancing our systems and you may notice duplicate entries/missing/outdated data. During this interim period, please contact our Customer Service at <https://www.ul.com/about/locations>.

Wiring Harnesses - Component

Pulse (Suzhou) Wireless Products Co Ltd

E491030

No.99 Huo Ju Road, Suzhou New District
Suzhou, Jiangsu 215009 China

Marking: Company name and model designation.

Note: For additional marking information, refer to the [Guide Information Page](#).

Model(s): Wiring Harnesses

Last Updated on 2021-11-02

The appearance of a company's name or product in this database does not in itself assure that products so identified have been manufactured under UL's Follow-Up Service. Only those products bearing the UL Mark should be considered to be Certified and covered under UL's Follow-Up Service. Always look for the Mark on the product.

UL permits the reproduction of the material contained in the Online Certification Directory subject to the following conditions: 1. The Guide Information, Assemblies, Constructions, Designs, Systems, and/or Certifications (files) must be presented in their entirety and in a non-misleading manner, without any manipulation of the data (or drawings). 2. The statement "Reprinted from the Online Certifications Directory with permission from UL" must appear adjacent to the extracted material. In addition, the reprinted material must include a copyright notice in the following format: "© 2021 UL LLC"



Issue Date: September 1, 2021

I-PEX Inc.

Electronic Components & Devices Div,
Quality Assurance Department

Approved by	Prepared by
K. Narita	A. Watanabe

Certificate of Compliance with RoHS Directive and REACH Regulation

I-PEX Inc. warrants that the product complies with EU RoHS Directive and REACH Regulation.

MHF_4L

Certified Part Number

20565-001R-083	20565-001R-13	20565-001R-13A	20565-001R-13L	20572-001R-08	20572-002R-08
20579-001E	20579-001E-01	20632-001R-37			

➤ **EU RoHS Directive (2011/65/EU, (EU)2015/863)**

Cadmium (Cd)	<100ppm
Lead (Pb)	<1000ppm
Mercury (Hg)	<1000ppm
Hexavalent Chromium (Cr+6)	<1000ppm
Polybrominated biphenyls (PBB)	<1000ppm
Polybrominated diphenyl ethers (PBDE)	<1000ppm
Bis(2-ethylhexyl) phthalate (DEHP)	<1000ppm
Butyl benzyl phthalate (BBP)	<1000ppm
Dibutyl phthalate (DBP)	<1000ppm
Diisobutyl phthalate (DIBP)	<1000ppm

➤ **EU REACH Regulation**

REACH SVHC (as of the date of inclusion: 08 July 2021) are not contained over 1000ppm in the product.

Please refer to ECHA website below for the detail of SVHC.

<https://echa.europa.eu/candidate-list-table>

塑膠材料保證書
CERTIFICATE OF COMPLIANCE OF PLASTIC MATERIAL

供應商

VENDER I-PEX INC.

料號

PART NUMBER 20565-001R-13*

品名

PART DESCRIPTION MHF PLUG ASS'Y

數量/訂單號碼

QUANTITY/P.O. NO. _____

出貨日期

SHIPPING DATE _____

原料製造商

MATERIAL SUPPLIER POLYPLASTICS CO LTD

原料品名/規格

MATERIAL DESCRIPTION/SPEC XFR 4840 GF10 (w), 310NF (w)

原料 UL 號碼

MATERIAL UL FILE NUMBER

原料防火等級

MATERIAL FLAMMABILITY CLASS

E213445

UL94, V-0

供應商保證 VENDER GUARANTY

1. 本批產品使用之原料確實依上述規格供應，若有變更冒替，本公司願負賠償之責。
IF THERE IS ANY DEVIATION TO THE LIST ABOVE, WE WILL BE RESPONSIBLE FOR THE COST INCURRED.
2. 本批產品所使用的回收料(次料)不可超過 50% .
THE REPROCESSED MATERIAL USED IN THIS SHIPMENT DOES NOT EXCEED 50

供應商簽章及蓋公司章

VENDER SIGNATURE & COMPANY SEAL _____



XFR 4840 GF10 (w), 310NF (w) - Plastics - Component

Plastics - Component

File Number: E213445



COMPANY

POLYPLASTICS CO LTD

18-1 KONAN 2-CHOME

MINATO-KU, TOKYO 108-8280 Japan

MODEL INFO

Duranex: XFR 4840 GF10 (w), 310NF (w)

Polybutylene Terephthalate (PBT) , furnished as pellets

--(w) Virgin and regrind up to 50% by weight inclusive, have the same flame characteristics only.

FLAMMABILITY PROPERTIES	NOMINAL VALUE	TEST METHOD
Flammability		ANSI/UL 94
0.75 mm, Color: ALL	V-0	
1.5 mm, Color: ALL	V-0	
3.0 mm, Color: ALL	5VA V-0	

ISO/IEC FLAMMABILITY PROPERTIES	NOMINAL VALUE	TEST METHOD
Flammability		IEC 60695-11-10
0.75 mm, Color: ALL	V-0	
1.5 mm, Color: ALL	V-0	
3.0 mm, Color: ALL	V-0	
Flammability (3.0 mm, Color: ALL)	5VA	IEC 60695-11-20

ELECTRICAL PROPERTIES**NOMINAL VALUE****TEST METHOD****Hot-wire Ignition (HWI)**

UL 746A

0.75 mm

1 PLC

1.5 mm

1 PLC

3.0 mm

1 PLC

High Amp Arc Ignition (HAI)

UL 746A

0.75 mm

0 PLC

1.5 mm

0 PLC

3.0 mm

0 PLC

Comparative Tracking Index (CTI)

1 PLC

UL 746

Dielectric Strength

24 kV/mm

ASTM D149

High Voltage Arc Tracking Rate (HVTR)

0 PLC

Volume Resistivity

1.0E+14 ohms-cm

ASTM D257/IEC 60093

High Voltage, Low Current Arc Resistance

5 PLC

THERMAL PROPERTIES**NOMINAL VALUE****TEST METHOD****Relative Thermal Index - Electrical Strength**

UL 746B

0.75 mm

130 °C

1.5 mm

130 °C

3.0 mm

130 °C

Relative Thermal Index - Mechanical Impact

UL 746B

0.75 mm

125 °C

1.5 mm

125 °C

3.0 mm

125 °C

Relative Thermal Index - Mechanical Strength

UL 746B

0.75 mm

125 °C

1.5 mm

125 °C

3.0 mm

125 °C