
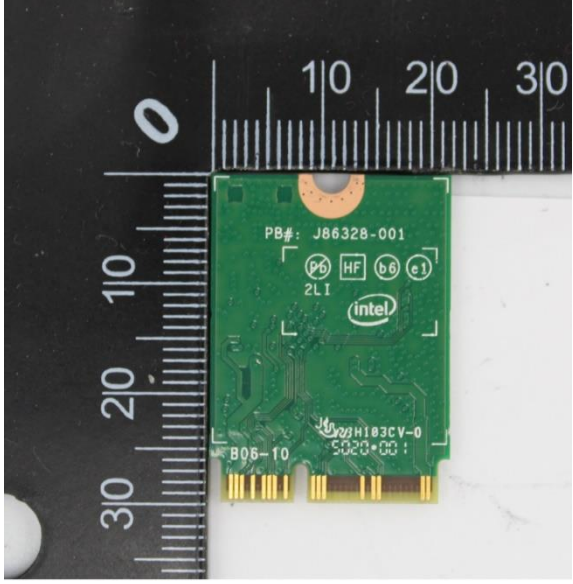
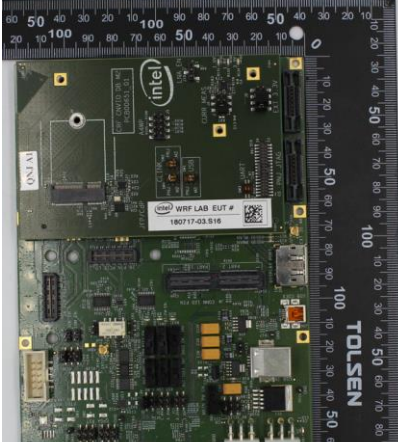

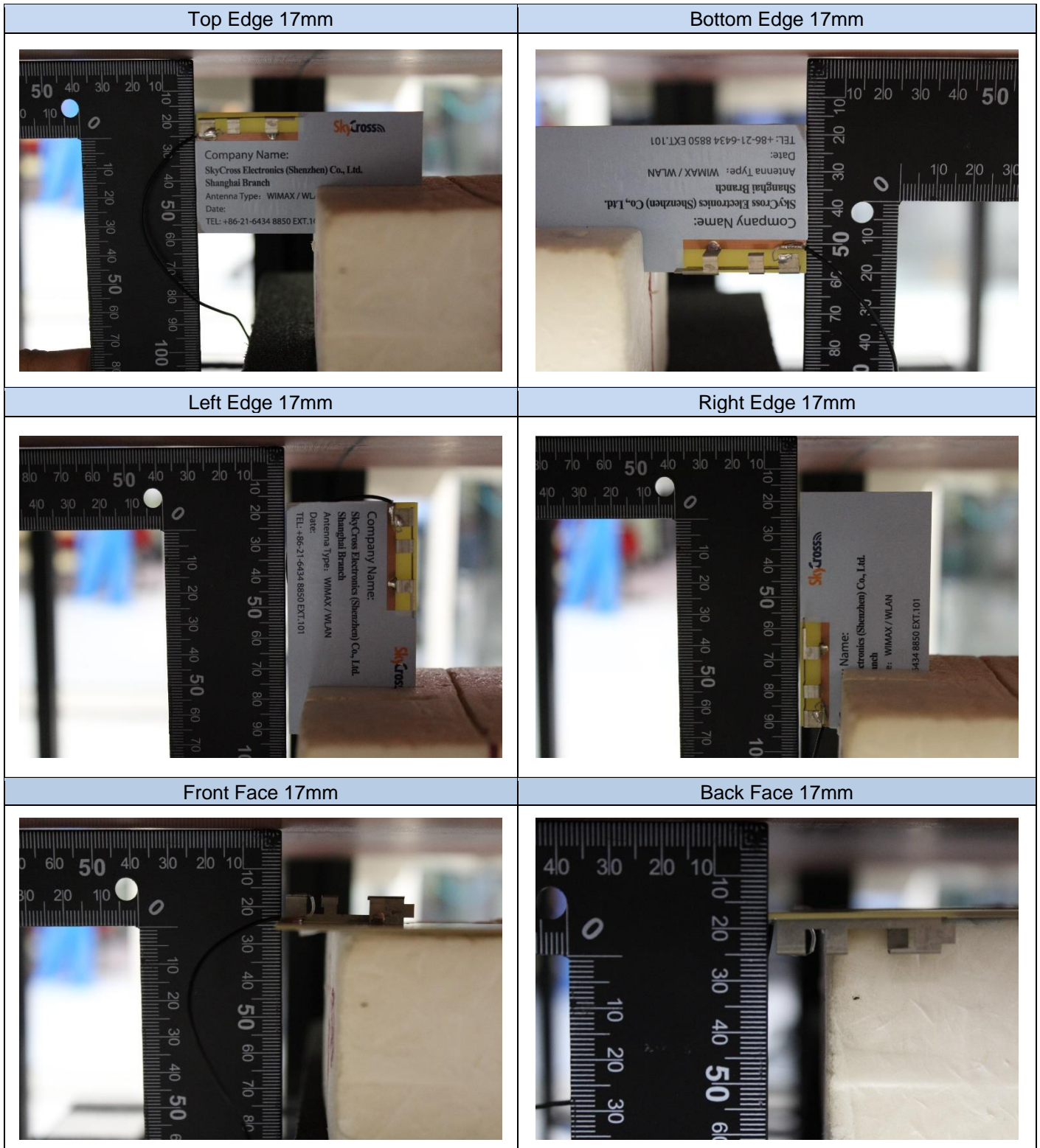


Annex F. Photographs


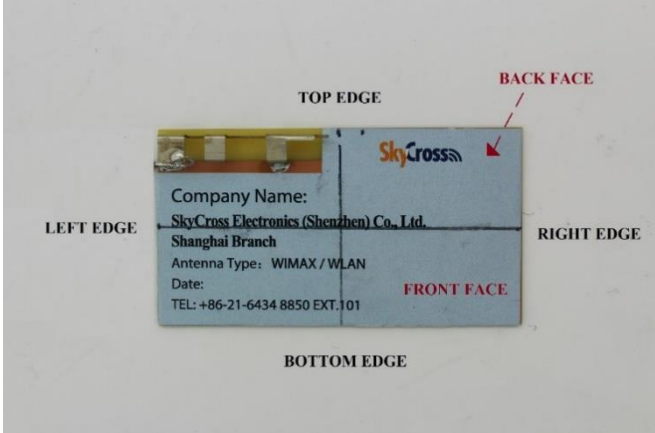
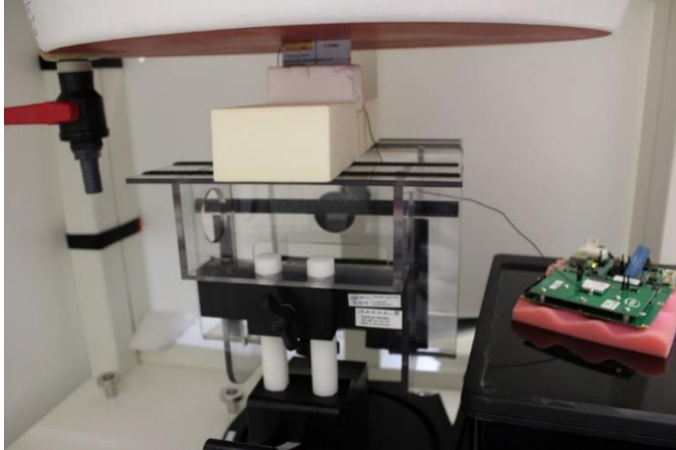
F.1 Test Sample

<p>AX201NGW Module: 201210-02.S16 (Front view)</p> 	<p>AX201NGW Module: 201210-02.S16 (Back view)</p> 
<p>Platform Extender: 180717-03.S16</p> 	<p>Laptop PC Host: 170000-01.S14</p> 

F.2 Test positions

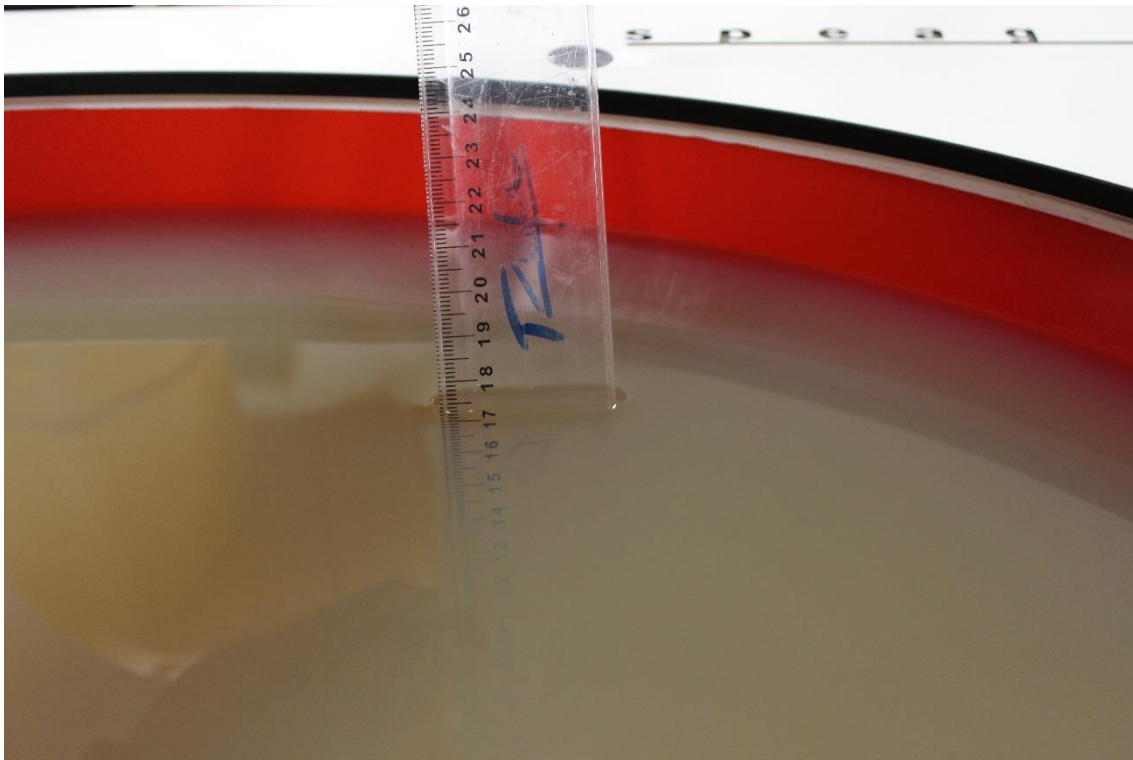


F.3 Antenna host platform location and adjacent edge positions relative to the body

Antenna Front View	Antenna Positions
 <p>A photograph showing the front view of an antenna host platform. A black ruler with white markings in centimeters is placed above the antenna. The antenna is a rectangular white PCB with a yellow antenna element on the left side. The text on the antenna reads: "Company Name: SkyCross Electronics (Shenzhen) Co., Ltd. Shanghai Branch", "Antenna Type: WIMAX / WLAN", "Date:", and "TEL: +86-21-6434 8850 EXT.101". The SkyCross logo is visible on the right side.</p>	 <p>A photograph of the antenna host platform with labels indicating its edges and faces. The labels are: "TOP EDGE" at the top, "BOTTOM EDGE" at the bottom, "LEFT EDGE" on the left, and "RIGHT EDGE" on the right. A red arrow points to the "BACK FACE" on the right side, and the text "FRONT FACE" is printed in red on the bottom right of the antenna.</p>
General Setup	
 <p>A photograph of the general test setup. It shows a laboratory environment with a black metal frame holding various components. A yellow box is mounted on the frame. To the right, a green PCB is placed on a red surface. A red cable is connected to the setup.</p>	

F.4 Phantom liquid level during measurements

ELI phantom Body liquid SAR Dasy SPEAG MBBL600-6000V6 Batch -191014-02



End of the report

This page is intentionally left blank and marks the last page of the test report.