

System Check_750MHz

DUT: D750V3-SN:1099

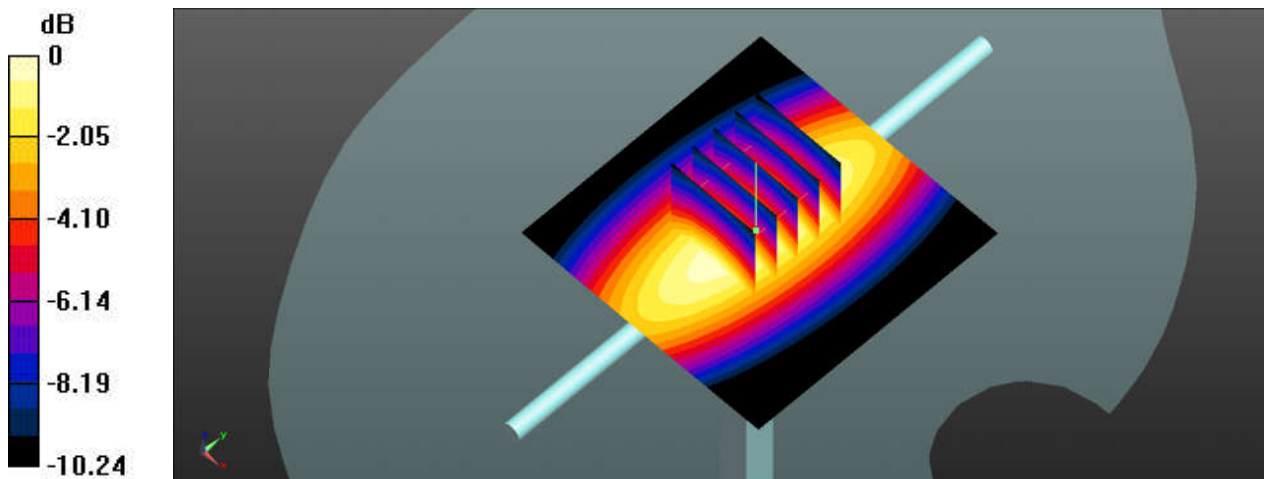
Communication System: UID 0, CW; Frequency: 750 MHz; Duty Cycle: 1:1
Medium: HSL_750_230208 Medium parameters used: $f = 750 \text{ MHz}$; $\sigma = 0.893 \text{ S/m}$; $\epsilon_r = 41.008$; $\rho = 1000 \text{ kg/m}^3$
Ambient Temperature : $23.2 \text{ }^\circ\text{C}$; Liquid Temperature : $22.2 \text{ }^\circ\text{C}$

DASY5 Configuration:

- Probe: EX3DV4 - SN7576; ConvF(10.72, 10.72, 10.72); Calibrated: 2022/7/28
- Sensor-Surface: 1.4mm (Mechanical Surface Detection)
- Electronics: DAE4 Sn1664; Calibrated: 2022/5/30
- Phantom: SAM with CRP v5.0(Front); Type: QD000P40CD; Serial: 1671
- Measurement SW: DASY52, Version 52.10 (3); SEMCAD X Version 14.6.13 (7474)

Pin=250mW/Area Scan (61x61x1): Interpolated grid: $dx=1.500 \text{ mm}$, $dy=1.500 \text{ mm}$
Maximum value of SAR (interpolated) = 2.33 W/kg

Pin=250mW/Zoom Scan (5x5x7)/Cube 0: Measurement grid: $dx=8\text{mm}$, $dy=8\text{mm}$, $dz=5\text{mm}$
Reference Value = 46.57 V/m ; Power Drift = -0.01 dB
Peak SAR (extrapolated) = 2.60 W/kg
SAR(1 g) = 1.97 W/kg ; SAR(10 g) = 1.3 W/kg
Maximum value of SAR (measured) = 2.33 W/kg



0 dB = 2.33 W/kg

System Check_750MHz

DUT: D750V3-SN:1099

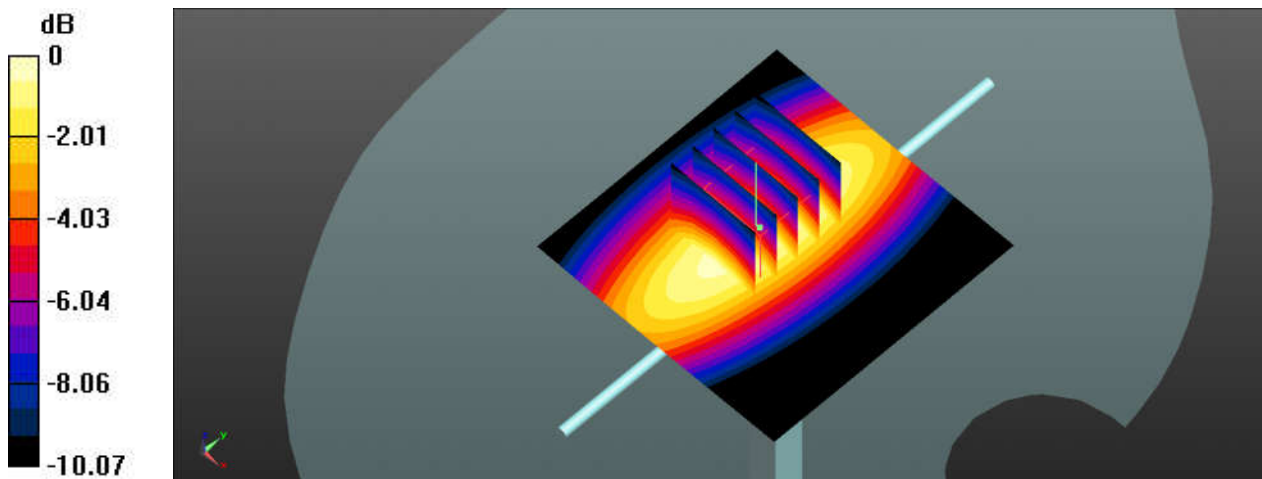
Communication System: UID 0, CW (0); Frequency: 750 MHz; Duty Cycle: 1:1
Medium: HSL_750_230210 Medium parameters used: $f = 750$ MHz; $\sigma = 0.89$ S/m; $\epsilon_r = 40.918$; $\rho = 1000$ kg/m³
Ambient Temperature : 23.3 °C; Liquid Temperature : 22.3 °C

DASY5 Configuration:

- Probe: EX3DV4 - SN7576; ConvF(10.72, 10.72, 10.72); Calibrated: 2022/7/28
- Sensor-Surface: 1.4mm (Mechanical Surface Detection)
- Electronics: DAE4 Sn1664; Calibrated: 2022/5/30
- Phantom: SAM with CRP v5.0(Front); Type: QD000P40CD; Serial: 1671
- Measurement SW: DASY52, Version 52.10 (3); SEMCAD X Version 14.6.13 (7474)

Pin=250mW/Area Scan (61x61x1): Interpolated grid: dx=1.500 mm, dy=1.500 mm
Maximum value of SAR (interpolated) = 2.42 W/kg

Pin=250mW/Zoom Scan (5x5x7)/Cube 0: Measurement grid: dx=8mm, dy=8mm, dz=5mm
Reference Value = 45.50 V/m; Power Drift = 0.1 dB
Peak SAR (extrapolated) = 2.73 W/kg
SAR(1 g) = 1.99 W/kg; SAR(10 g) = 1.32 W/kg
Maximum value of SAR (measured) = 2.44 W/kg



0 dB = 2.44 W/kg

System Check_750MHz

DUT: D750V3-SN:1099

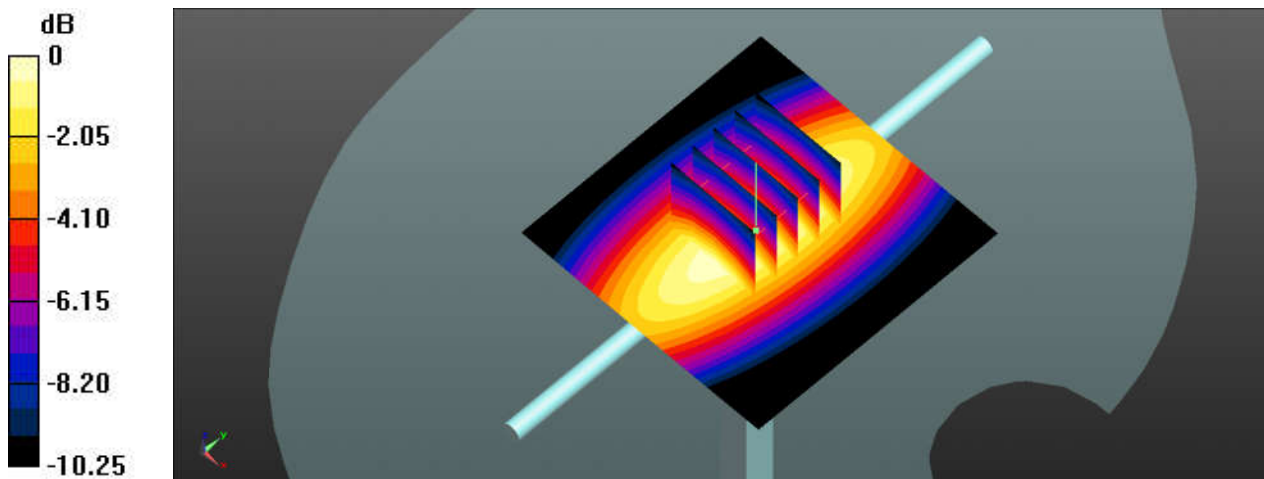
Communication System: UID 0, CW; Frequency: 750 MHz; Duty Cycle: 1:1
Medium: HSL_750_230213 Medium parameters used: $f = 750 \text{ MHz}$; $\sigma = 0.921 \text{ S/m}$; $\epsilon_r = 43.464$; $\rho = 1000 \text{ kg/m}^3$
Ambient Temperature : $23.4 \text{ }^\circ\text{C}$; Liquid Temperature : $22.4 \text{ }^\circ\text{C}$

DASY5 Configuration:

- Probe: EX3DV4 - SN7576; ConvF(10.72, 10.72, 10.72); Calibrated: 2022/7/28
- Sensor-Surface: 1.4mm (Mechanical Surface Detection)
- Electronics: DAE4 Sn1664; Calibrated: 2022/5/30
- Phantom: SAM with CRP v5.0(Front); Type: QD000P40CD; Serial: 1671
- Measurement SW: DASY52, Version 52.10 (3); SEMCAD X Version 14.6.13 (7474)

Pin=250mW/Area Scan (61x61x1): Interpolated grid: $dx=1.500 \text{ mm}$, $dy=1.500 \text{ mm}$
Maximum value of SAR (interpolated) = 2.54 W/kg

Pin=250mW/Zoom Scan (5x5x7)/Cube 0: Measurement grid: $dx=8\text{mm}$, $dy=8\text{mm}$, $dz=5\text{mm}$
Reference Value = 46.57 V/m ; Power Drift = -0.01 dB
Peak SAR (extrapolated) = 2.77 W/kg
SAR(1 g) = 2.01 W/kg ; SAR(10 g) = 1.53 W/kg
Maximum value of SAR (measured) = 2.54 W/kg



System Check_835MHz

DUT: D835V2-SN:4d162

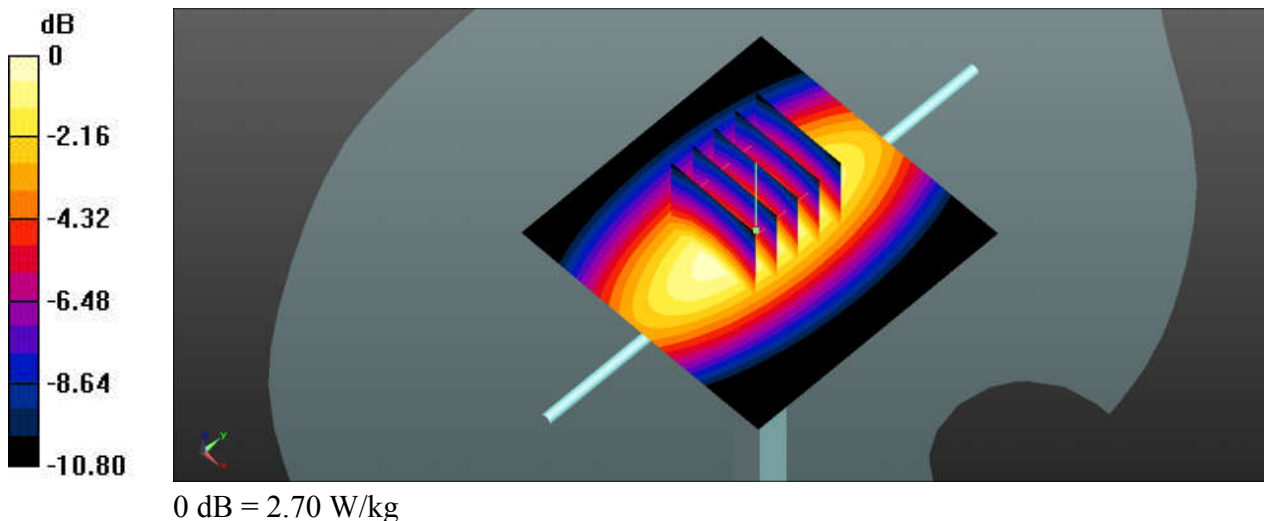
Communication System: UID 0, CW; Frequency: 835 MHz; Duty Cycle: 1:1
Medium: HSL_835_230212 Medium parameters used: $f = 835 \text{ MHz}$; $\sigma = 0.928 \text{ S/m}$; $\epsilon_r = 42.73$; $\rho = 1000 \text{ kg/m}^3$
Ambient Temperature : $23.4 \text{ }^\circ\text{C}$; Liquid Temperature : $22.4 \text{ }^\circ\text{C}$

DASY5 Configuration:

- Probe: EX3DV4 - SN7576; ConvF(10.47, 10.47, 10.47); Calibrated: 2022/7/28
- Sensor-Surface: 1.4mm (Mechanical Surface Detection)
- Electronics: DAE4 Sn1664; Calibrated: 2022/5/30
- Phantom: SAM with CRP v5.0(Front); Type: QD000P40CD; Serial: 1671
- Measurement SW: DASY52, Version 52.10 (3); SEMCAD X Version 14.6.13 (7474)

Pin=250mW/Area Scan (61x61x1): Interpolated grid: $dx=1.500 \text{ mm}$, $dy=1.500 \text{ mm}$
Maximum value of SAR (interpolated) = 2.70 W/kg

Pin=250mW/Zoom Scan (5x5x7)/Cube 0: Measurement grid: $dx=8\text{mm}$, $dy=8\text{mm}$, $dz=5\text{mm}$
Reference Value = 49.48 V/m ; Power Drift = -0.02 dB
Peak SAR (extrapolated) = 3.12 W/kg
SAR(1 g) = 2.22 W/kg ; SAR(10 g) = 1.48 W/kg
Maximum value of SAR (measured) = 2.70 W/kg



System Check_835MHz

DUT: D835V2-SN:4d162

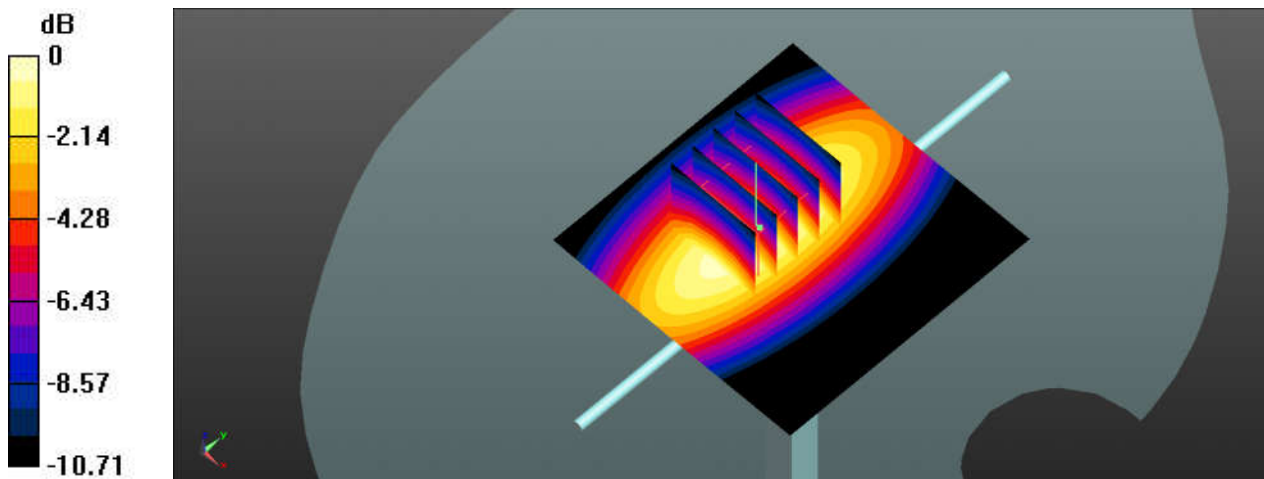
Communication System: UID 0, CW (0); Frequency: 835 MHz; Duty Cycle: 1:1
Medium: HSL_835_230214 Medium parameters used: $f = 835 \text{ MHz}$; $\sigma = 0.914 \text{ S/m}$; $\epsilon_r = 41.826$; $\rho = 1000 \text{ kg/m}^3$
Ambient Temperature : $23.5 \text{ }^\circ\text{C}$; Liquid Temperature : $22.3 \text{ }^\circ\text{C}$

DASY5 Configuration:

- Probe: EX3DV4 - SN7576; ConvF(10.47, 10.47, 10.47); Calibrated: 2022/7/28
- Sensor-Surface: 1.4mm (Mechanical Surface Detection)
- Electronics: DAE4 Sn1664; Calibrated: 2022/5/30
- Phantom: SAM with CRP v5.0(Front); Type: QD000P40CD; Serial: 1671
- Measurement SW: DASY52, Version 52.10 (3); SEMCAD X Version 14.6.13 (7474)

Pin=250mW/Area Scan (61x61x1): Interpolated grid: $dx=1.500 \text{ mm}$, $dy=1.500 \text{ mm}$
Maximum value of SAR (interpolated) = 2.65 W/kg

Pin=250mW/Zoom Scan (5x5x7)/Cube 0: Measurement grid: $dx=8\text{mm}$, $dy=8\text{mm}$, $dz=5\text{mm}$
Reference Value = 46.97 V/m ; Power Drift = 0.11 dB
Peak SAR (extrapolated) = 3.15 W/kg
SAR(1 g) = 2.28 W/kg ; SAR(10 g) = 1.54 W/kg
Maximum value of SAR (measured) = 2.68 W/kg



0 dB = 2.68 W/kg

System Check_835MHz

DUT: D835V2-SN:4d162

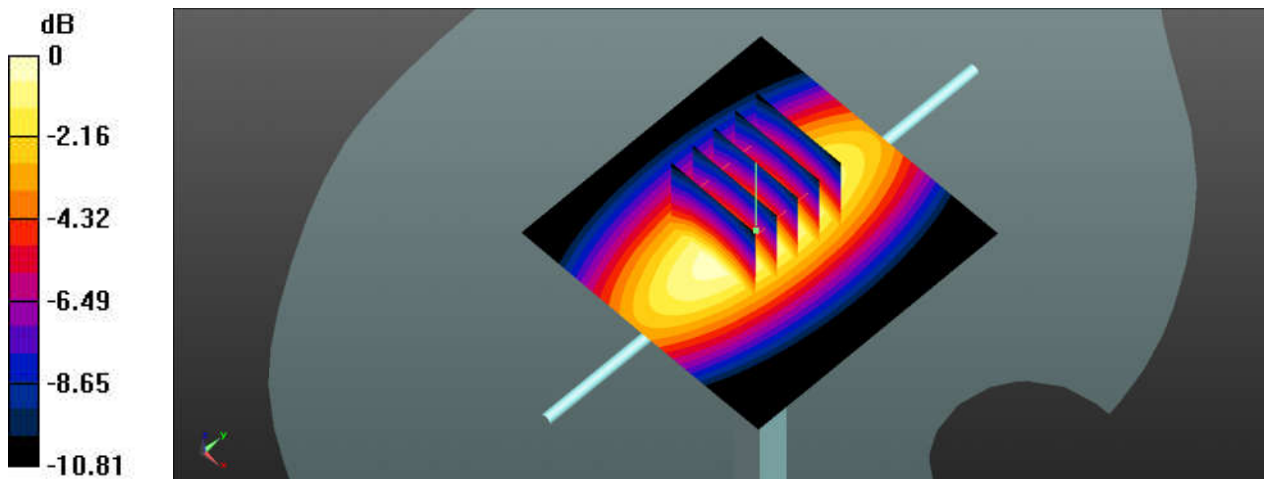
Communication System: UID 0, CW; Frequency: 835 MHz; Duty Cycle: 1:1
Medium: HSL_835_230215 Medium parameters used: $f = 835 \text{ MHz}$; $\sigma = 0.892 \text{ S/m}$; $\epsilon_r = 41.638$; $\rho = 1000 \text{ kg/m}^3$
Ambient Temperature : $23.3 \text{ }^\circ\text{C}$; Liquid Temperature : $22.2 \text{ }^\circ\text{C}$

DASY5 Configuration:

- Probe: EX3DV4 - SN7576; ConvF(10.47, 10.47, 10.47); Calibrated: 2022/7/28
- Sensor-Surface: 1.4mm (Mechanical Surface Detection)
- Electronics: DAE4 Sn1664; Calibrated: 2022/5/30
- Phantom: SAM with CRP v5.0(Front); Type: QD000P40CD; Serial: 1671
- Measurement SW: DASY52, Version 52.10 (3); SEMCAD X Version 14.6.13 (7474)

Pin=250mW/Area Scan (61x61x1): Interpolated grid: $dx=1.500 \text{ mm}$, $dy=1.500 \text{ mm}$
Maximum value of SAR (interpolated) = 3.12 W/kg

Pin=250mW/Zoom Scan (5x5x7)/Cube 0: Measurement grid: $dx=8\text{mm}$, $dy=8\text{mm}$, $dz=5\text{mm}$
Reference Value = 49.48 V/m ; Power Drift = -0.02 dB
Peak SAR (extrapolated) = 4.52 W/kg
SAR(1 g) = 2.53 W/kg; SAR(10 g) = 1.69 W/kg
Maximum value of SAR (measured) = 3.12 W/kg



0 dB = 3.12 W/kg

System Check_1750MHz

DUT: D1750V2-SN:1137

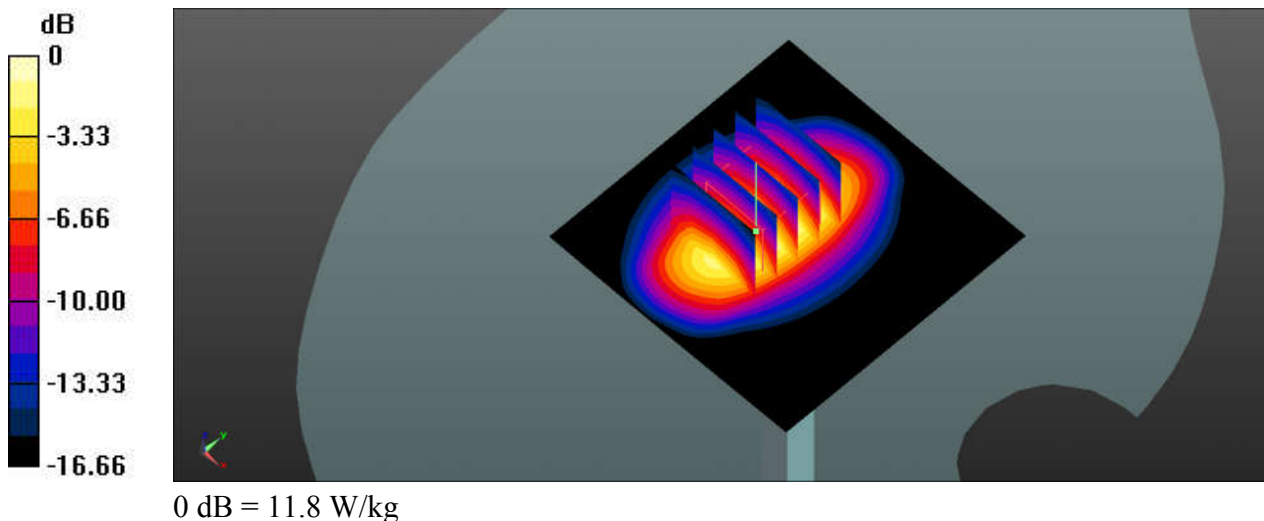
Communication System: UID 0, CW; Frequency: 1750 MHz; Duty Cycle: 1:1
Medium: HSL_1750_230216 Medium parameters used: $f = 1750$ MHz; $\sigma = 1.388$ S/m; $\epsilon_r = 41.364$;
 $\rho = 1000$ kg/m³
Ambient Temperature : 23.2 °C; Liquid Temperature : 22.5 °C

DASY5 Configuration:

- Probe: EX3DV4 - SN7576; ConvF(8.98, 8.98, 8.98); Calibrated: 2022/7/28
- Sensor-Surface: 1.4mm (Mechanical Surface Detection)
- Electronics: DAE4 Sn1664; Calibrated: 2022/5/30
- Phantom: SAM with CRP v5.0(Front); Type: QD000P40CD; Serial: 1671
- Measurement SW: DASY52, Version 52.10 (3); SEMCAD X Version 14.6.13 (7474)

Pin=250mW/Area Scan (61x61x1): Interpolated grid: dx=1.500 mm, dy=1.500 mm
Maximum value of SAR (interpolated) = 11.9 W/kg

Pin=250mW/Zoom Scan (5x5x7)/Cube 0: Measurement grid: dx=8mm, dy=8mm, dz=5mm
Reference Value = 71.69 V/m; Power Drift = 0.16 dB
Peak SAR (extrapolated) = 13.8 W/kg
SAR(1 g) = 8.48 W/kg; SAR(10 g) = 4.48 W/kg
Maximum value of SAR (measured) = 11.8 W/kg



System Check_1750MHz

DUT: D1750V2-SN:1137

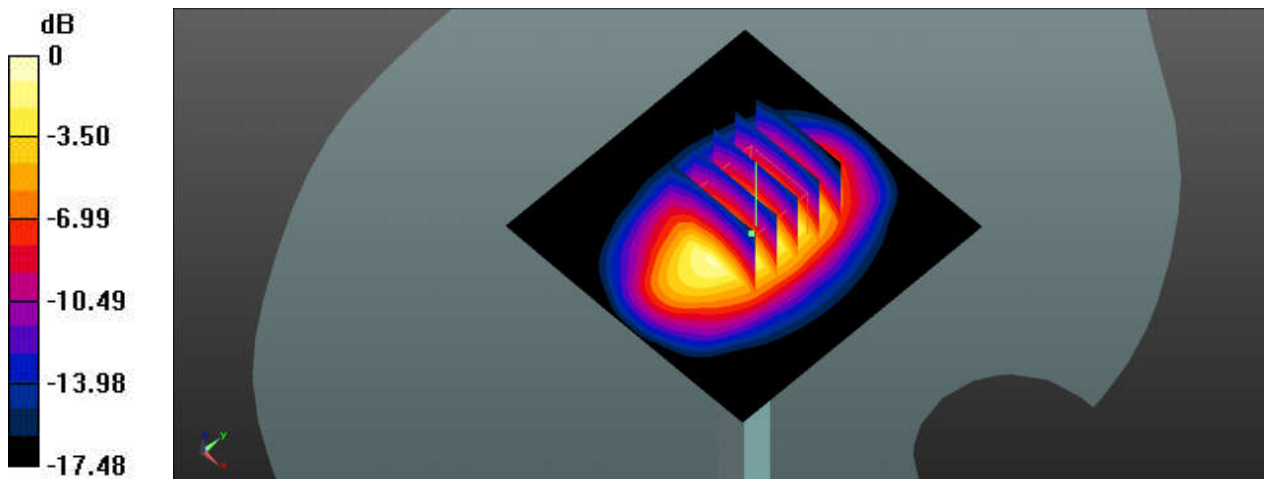
Communication System: UID 0, CW; Frequency: 1750 MHz; Duty Cycle: 1:1
Medium: HSL_1750_230218 Medium parameters used: $f = 1750 \text{ MHz}$; $\sigma = 1.381 \text{ S/m}$; $\epsilon_r = 40.83$; $\rho = 1000 \text{ kg/m}^3$
Ambient Temperature : $23.3 \text{ }^\circ\text{C}$; Liquid Temperature : $22.4 \text{ }^\circ\text{C}$

DASY5 Configuration:

- Probe: EX3DV4 - SN7576; ConvF(8.98, 8.98, 8.98); Calibrated: 2022/7/28
- Sensor-Surface: 1.4mm (Mechanical Surface Detection)
- Electronics: DAE4 Sn1664; Calibrated: 2022/5/30
- Phantom: SAM with CRP v5.0(Front); Type: QD000P40CD; Serial: 1671
- Measurement SW: DASY52, Version 52.10 (3); SEMCAD X Version 14.6.13 (7474)

Pin=250mW/Area Scan (61x61x1): Interpolated grid: $dx=1.500 \text{ mm}$, $dy=1.500 \text{ mm}$
Maximum value of SAR (interpolated) = 10.99 W/kg

Pin=250mW/Zoom Scan (5x5x7)/Cube 0: Measurement grid: $dx=8\text{mm}$, $dy=8\text{mm}$, $dz=5\text{mm}$
Reference Value = 81.86 V/m ; Power Drift = -0.12 dB
Peak SAR (extrapolated) = 13.5 W/kg
SAR(1 g) = 8.4 W/kg ; SAR(10 g) = 4.45 W/kg
Maximum value of SAR (measured) = 11.96 W/kg



0 dB = 10.96 W/kg

System Check_1750MHz

DUT: D1750V2-SN:1137

Communication System: UID 0, CW; Frequency: 1750 MHz; Duty Cycle: 1:1

Medium: HSL_1750_230219 Medium parameters used: $f = 1750$ MHz; $\sigma = 1.334$ S/m; $\epsilon_r = 41.79$; $\rho = 1000$ kg/m³

Ambient Temperature : 23.4 °C; Liquid Temperature : 22.2 °C

DASY5 Configuration:

- Probe: EX3DV4 - SN7576; ConvF(8.98, 8.98, 8.98); Calibrated: 2022/7/28
- Sensor-Surface: 1.4mm (Mechanical Surface Detection)
- Electronics: DAE4 Sn1664; Calibrated: 2022/5/30
- Phantom: SAM with CRP v5.0(Front); Type: QD000P40CD; Serial: 1671
- Measurement SW: DASY52, Version 52.10 (3); SEMCAD X Version 14.6.13 (7474)

Pin=250mW/Area Scan (61x61x1): Interpolated grid: dx=1.500 mm, dy=1.500 mm

Maximum value of SAR (interpolated) = 11.4 W/kg

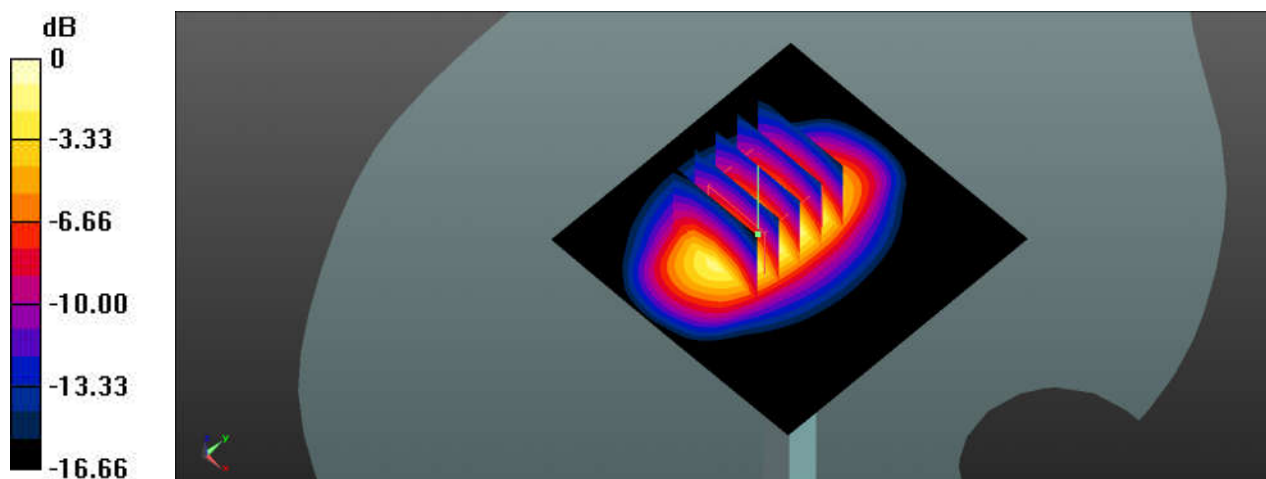
Pin=250mW/Zoom Scan (5x5x7)/Cube 0: Measurement grid: dx=8mm, dy=8mm, dz=5mm

Reference Value = 71.69 V/m; Power Drift = 0.06 dB

Peak SAR (extrapolated) = 13.2 W/kg

SAR(1 g) = 8.52 W/kg; SAR(10 g) = 4.51 W/kg

Maximum value of SAR (measured) = 11.8 W/kg



0 dB = 11.8 W/kg

System Check_1900MHz

DUT: D1900V2-SN:5d182

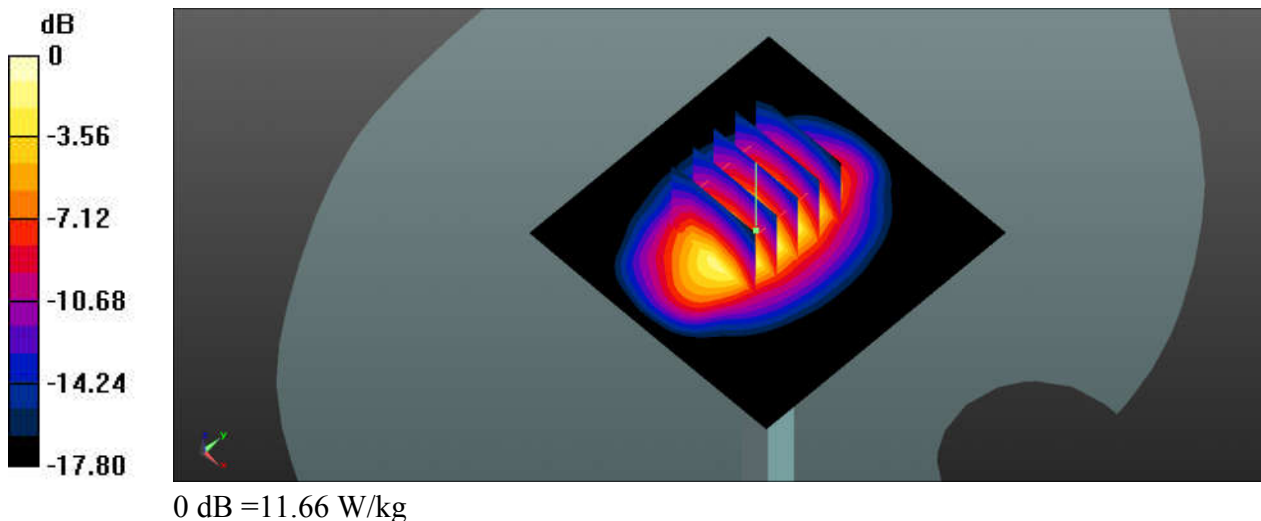
Communication System: UID 0, CW; Frequency: 1900 MHz; Duty Cycle: 1:1
Medium: HSL_1900_230220 Medium parameters used: $f = 1900 \text{ MHz}$; $\sigma = 1.445 \text{ S/m}$; $\epsilon_r = 40.021$;
 $\rho = 1000 \text{ kg/m}^3$
Ambient Temperature : $23.5 \text{ }^\circ\text{C}$; Liquid Temperature : $22.4 \text{ }^\circ\text{C}$

DASY5 Configuration:

- Probe: EX3DV4 - SN7576; ConvF(8.55, 8.55, 8.55); Calibrated: 2022/7/28
- Sensor-Surface: 1.4mm (Mechanical Surface Detection)
- Electronics: DAE4 Sn1664; Calibrated: 2022/5/30
- Phantom: SAM with CRP v5.0(Front); Type: QD000P40CD; Serial: 1671
- Measurement SW: DASY52, Version 52.10 (3); SEMCAD X Version 14.6.13 (7474)

Pin=250mW/Area Scan (61x61x1): Interpolated grid: $dx=1.500 \text{ mm}$, $dy=1.500 \text{ mm}$
Maximum value of SAR (interpolated) = 11.63 W/kg

Pin=250mW/Zoom Scan (5x5x7)/Cube 0: Measurement grid: $dx=8\text{mm}$, $dy=8\text{mm}$, $dz=5\text{mm}$
Reference Value = 62.64 V/m ; Power Drift = 0.18 dB
Peak SAR (extrapolated) = 13.77 W/kg
SAR(1 g) = 9.29 W/kg ; SAR(10 g) = 4.73 W/kg
Maximum value of SAR (measured) = 11.66 W/kg



System Check_1900MHz

DUT: D1900V2-SN:5d182

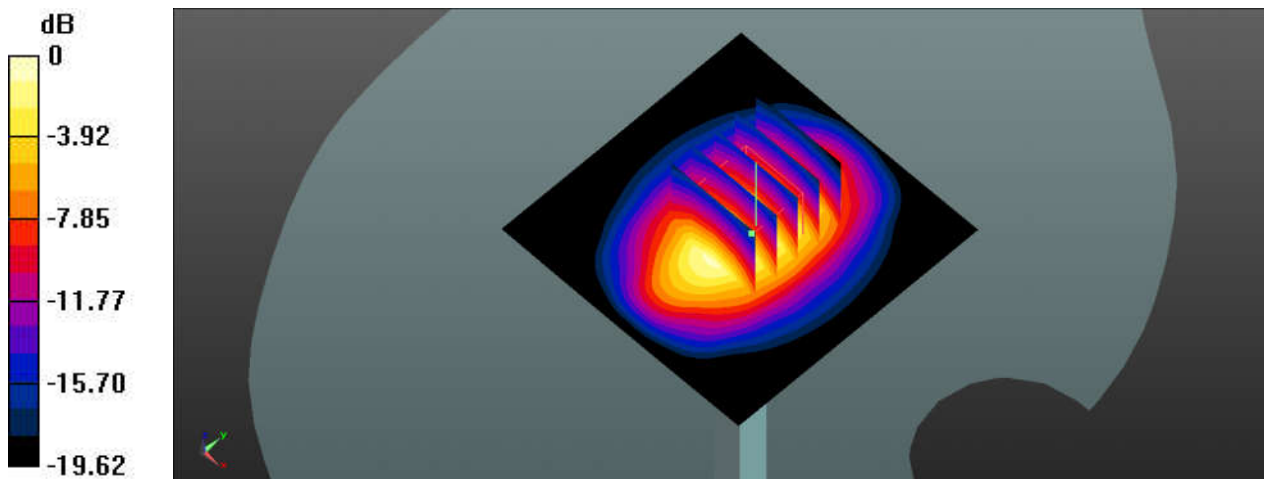
Communication System: UID 0, CW; Frequency: 1900 MHz; Duty Cycle: 1:1
Medium: HSL_1900_230222 Medium parameters used: $f = 1900 \text{ MHz}$; $\sigma = 1.46 \text{ S/m}$; $\epsilon_r = 39.248$; $\rho = 1000 \text{ kg/m}^3$
Ambient Temperature : $23.3 \text{ }^\circ\text{C}$; Liquid Temperature : $22.3 \text{ }^\circ\text{C}$

DASY5 Configuration:

- Probe: EX3DV4 - SN7576; ConvF(8.55, 8.55, 8.55); Calibrated: 2022/7/28
- Sensor-Surface: 1.4mm (Mechanical Surface Detection)
- Electronics: DAE4 Sn1664; Calibrated: 2022/5/30
- Phantom: SAM with CRP v5.0(Front); Type: QD000P40CD; Serial: 1671
- Measurement SW: DASY52, Version 52.10 (3); SEMCAD X Version 14.6.13 (7474)

Pin=250mW/Area Scan (61x61x1): Interpolated grid: $dx=1.500 \text{ mm}$, $dy=1.500 \text{ mm}$
Maximum value of SAR (interpolated) = 12.6 W/kg

Pin=250mW/Zoom Scan (5x5x7)/Cube 0: Measurement grid: $dx=8\text{mm}$, $dy=8\text{mm}$, $dz=5\text{mm}$
Reference Value = 85.85 V/m ; Power Drift = -0.1 dB
Peak SAR (extrapolated) = 15.9 W/kg
SAR(1 g) = 9.26 W/kg ; SAR(10 g) = 4.69 W/kg
Maximum value of SAR (measured) = 12.5 W/kg



0 dB = 12.5 W/kg

System Check_1900MHz

DUT: D1900V2-SN:5d182

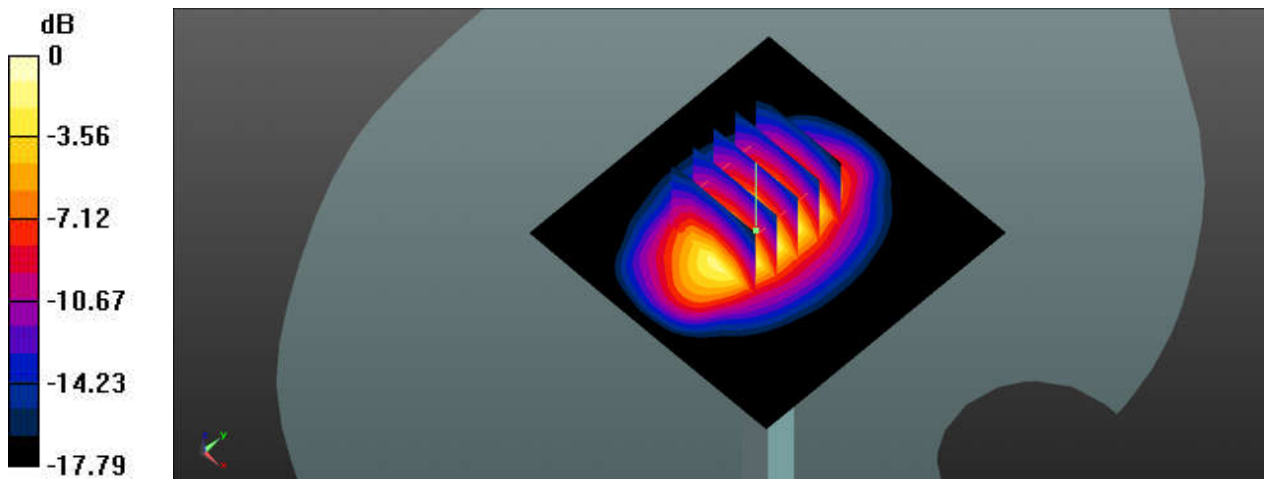
Communication System: UID 0, CW; Frequency: 1900 MHz; Duty Cycle: 1:1
Medium: HSL_1900_230223 Medium parameters used: $f = 1900 \text{ MHz}$; $\sigma = 1.387 \text{ S/m}$; $\epsilon_r = 41.154$;
 $\rho = 1000 \text{ kg/m}^3$
Ambient Temperature : $23.2 \text{ }^\circ\text{C}$; Liquid Temperature : $22.4 \text{ }^\circ\text{C}$

DASY5 Configuration:

- Probe: EX3DV4 - SN7576; ConvF(8.55, 8.55, 8.55); Calibrated: 2022/7/28
- Sensor-Surface: 1.4mm (Mechanical Surface Detection)
- Electronics: DAE4 Sn1664; Calibrated: 2022/5/30
- Phantom: SAM with CRP v5.0(Front); Type: QD000P40CD; Serial: 1671
- Measurement SW: DASY52, Version 52.10 (3); SEMCAD X Version 14.6.13 (7474)

Pin=250mW/Area Scan (61x61x1): Interpolated grid: $dx=1.500 \text{ mm}$, $dy=1.500 \text{ mm}$
Maximum value of SAR (interpolated) = 11.32 W/kg

Pin=250mW/Zoom Scan (5x5x7)/Cube 0: Measurement grid: $dx=8\text{mm}$, $dy=8\text{mm}$, $dz=5\text{mm}$
Reference Value = 62.64 V/m ; Power Drift = 0.08 dB
Peak SAR (extrapolated) = 13.38 W/kg
SAR(1 g) = 9.33 W/kg ; SAR(10 g) = 4.71 W/kg
Maximum value of SAR (measured) = 11.44 W/kg



0 dB = 11.44 W/kg

System Check_2300MHz

DUT: D2300V2-SN:1056

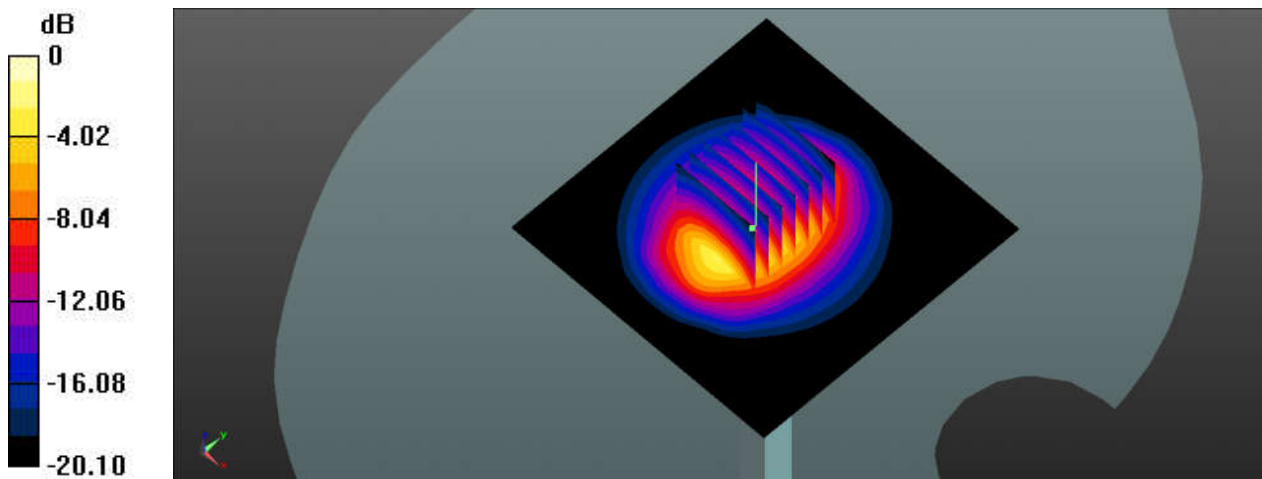
Communication System: UID 0, CW (0); Frequency: 2300 MHz; Duty Cycle: 1:1
Medium: HSL_2300_230224 Medium parameters used: $f = 2300$ MHz; $\sigma = 1.665$ S/m; $\epsilon_r = 38.837$;
 $\rho = 1000$ kg/m³
Ambient Temperature : 23.5 °C ; Liquid Temperature : 22.3 °C

DASY5 Configuration:

- Probe: EX3DV4 - SN3826; ConvF(7.79, 7.79, 7.79); Calibrated: 2022/8/8
- Sensor-Surface: 1.4mm (Mechanical Surface Detection)
- Electronics: DAE4 Sn1664; Calibrated: 2022/5/30
- Phantom: SAM with CRP v5.0(Front); Type: QD000P40CD; Serial: 1671
- Measurement SW: DASY52, Version 52.10 (3); SEMCAD X Version 14.6.13 (7474)

Pin=250mW/Area Scan (81x81x1): Interpolated grid: dx=1.200 mm, dy=1.200 mm
Maximum value of SAR (interpolated) = 17.4 W/kg

Pin=250mW/Zoom Scan (7x7x7)/Cube 0: Measurement grid: dx=5mm, dy=5mm, dz=5mm
Reference Value = 113.3 V/m; Power Drift = 0.14 dB
Peak SAR (extrapolated) = 23.5 W/kg
SAR(1 g) = 11.3 W/kg; SAR(10 g) = 5.42 W/kg
Maximum value of SAR (measured) = 17.2 W/kg



0 dB = 17.2 W/kg

System Check_2300MHz

DUT: D2300V2-SN:1056

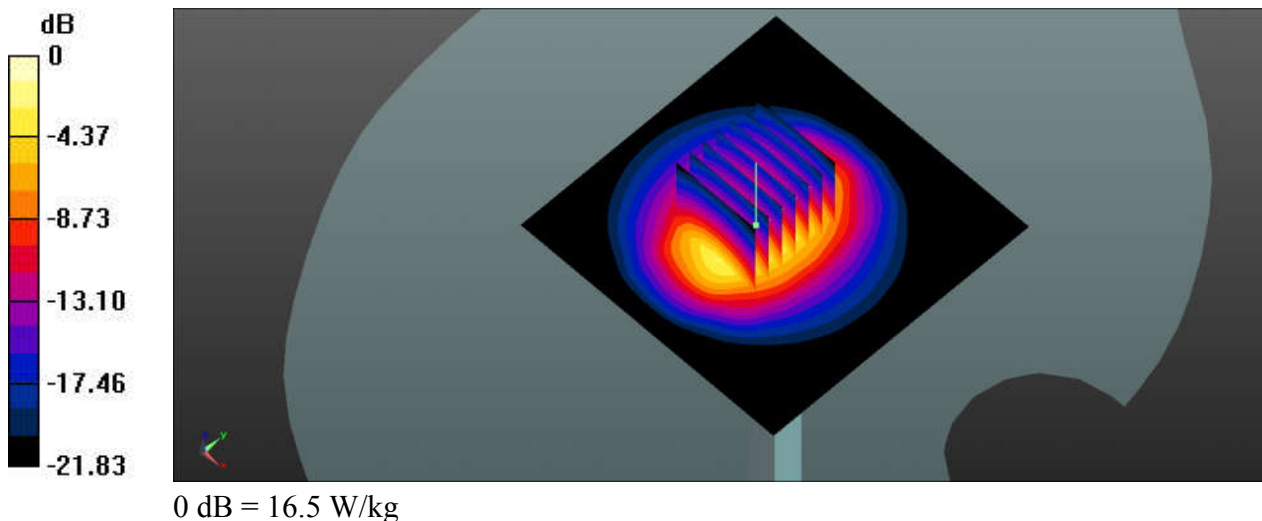
Communication System: UID 0, CW (0); Frequency: 2300 MHz; Duty Cycle: 1:1
Medium: HSL_2300_230226 Medium parameters used: $f = 2300$ MHz; $\sigma = 1.689$ S/m; $\epsilon_r = 38.8$; $\rho = 1000$ kg/m³
Ambient Temperature : 23.3 °C; Liquid Temperature : 22.2 °C

DASY5 Configuration:

- Probe: EX3DV4 - SN3826; ConvF(7.79, 7.79, 7.79); Calibrated: 2022/8/8
- Sensor-Surface: 1.4mm (Mechanical Surface Detection)
- Electronics: DAE4 Sn1664; Calibrated: 2022/5/30
- Phantom: SAM with CRP v5.0(Front); Type: QD000P40CD; Serial: 1671
- Measurement SW: DASY52, Version 52.10 (3); SEMCAD X Version 14.6.13 (7474)

Pin=250mW/Area Scan (81x81x1): Interpolated grid: dx=1.200 mm, dy=1.200 mm
Maximum value of SAR (interpolated) = 16.1 W/kg

Pin=250mW/Zoom Scan (7x7x7)/Cube 0: Measurement grid: dx=5mm, dy=5mm, dz=5mm
Reference Value = 99.83 V/m; Power Drift = -0.04 dB
Peak SAR (extrapolated) = 22.1 W/kg
SAR(1 g) = 11.5 W/kg; SAR(10 g) = 5.34 W/kg
Maximum value of SAR (measured) = 16.5 W/kg



System Check_2300MHz

DUT: D2300V2-SN:1056

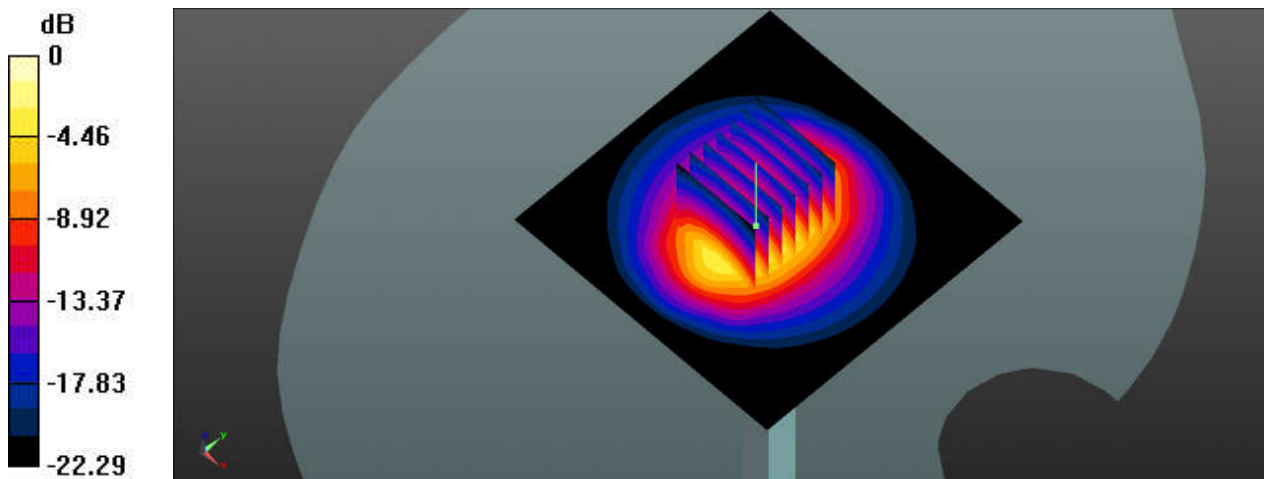
Communication System: UID 0, CW (0); Frequency: 2300 MHz; Duty Cycle: 1:1
Medium: HSL_2300_230227 Medium parameters used: $f = 2300$ MHz; $\sigma = 1.683$ S/m; $\epsilon_r = 39.625$;
 $\rho = 1000$ kg/m³
Ambient Temperature : 23.4 °C; Liquid Temperature : 22.4 °C

DASY5 Configuration:

- Probe: EX3DV4 - SN3826; ConvF(7.79, 7.79, 7.79); Calibrated: 2022/8/8
- Sensor-Surface: 1.4mm (Mechanical Surface Detection)
- Electronics: DAE4 Sn1664; Calibrated: 2022/5/30
- Phantom: SAM with CRP v5.0(Front); Type: QD000P40CD; Serial: 1671
- Measurement SW: DASY52, Version 52.10 (3); SEMCAD X Version 14.6.13 (7474)

Pin=250mW/Area Scan (81x81x1): Interpolated grid: dx=1.200 mm, dy=1.200 mm
Maximum value of SAR (interpolated) = 18.3 W/kg

Pin=250mW/Zoom Scan (7x7x7)/Cube 0: Measurement grid: dx=5mm, dy=5mm, dz=5mm
Reference Value = 104.8 V/m; Power Drift = -0.05 dB
Peak SAR (extrapolated) = 24.4 W/kg
SAR(1 g) = 11.5 W/kg; SAR(10 g) = 5.43 W/kg
Maximum value of SAR (measured) = 18.2 W/kg



0 dB = 18.2 W/kg

System Check_2450MHz

DUT: D2450V2-SN:924

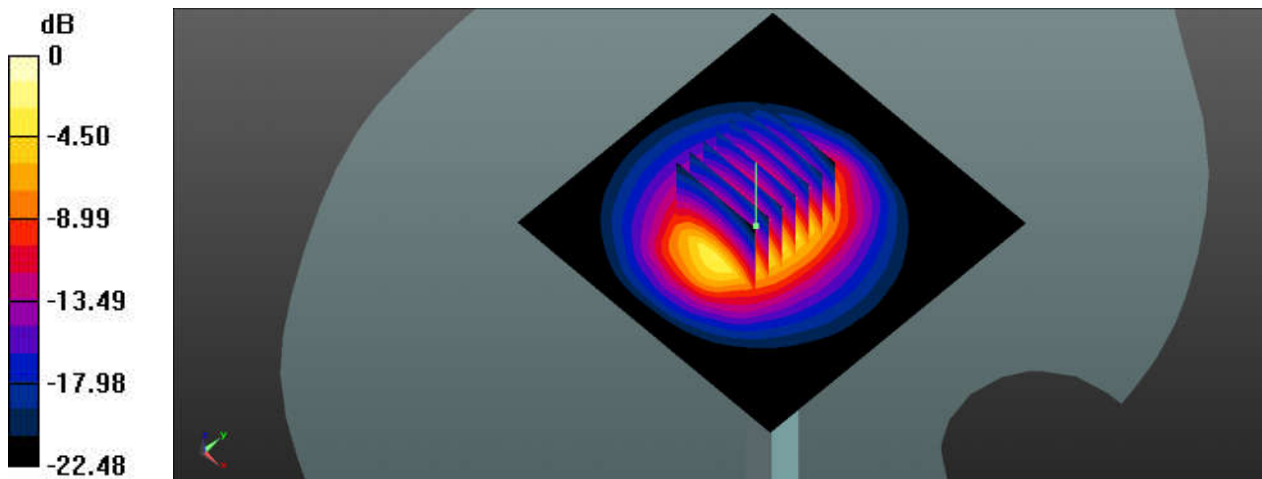
Communication System: UID 0, CW; Frequency: 2450 MHz; Duty Cycle: 1:1
Medium: HSL_2450_230228 Medium parameters used: $f = 2450$ MHz; $\sigma = 1.861$ S/m; $\epsilon_r = 39.575$;
 $\rho = 1000$ kg/m³
Ambient Temperature : 23.5 °C ; Liquid Temperature : 22.4 °C

DASY5 Configuration:

- Probe: EX3DV4 - SN7576; ConvF(7.88, 7.88, 7.88); Calibrated: 2022/7/28
- Sensor-Surface: 1.4mm (Mechanical Surface Detection)
- Electronics: DAE4 Sn1664; Calibrated: 2022/5/30
- Phantom: SAM with CRP v5.0(Front); Type: QD000P40CD; Serial: 1671
- Measurement SW: DASY52, Version 52.10 (3); SEMCAD X Version 14.6.13 (7474)

Pin=250mW/Area Scan (81x81x1): Interpolated grid: dx=1.200 mm, dy=1.200 mm
Maximum value of SAR (interpolated) = 16.2 W/kg

Pin=250mW/Zoom Scan (7x7x7)/Cube 0: Measurement grid: dx=5mm, dy=5mm, dz=5mm
Reference Value = 70.02 V/m; Power Drift = 0.05 dB
Peak SAR (extrapolated) = 19.8 W/kg
SAR(1 g) = 11.9 W/kg; SAR(10 g) = 5.6 W/kg
Maximum value of SAR (measured) = 16.1 W/kg



0 dB = 16.1 W/kg

System Check_2450MHz

DUT: D2450V2-SN:924

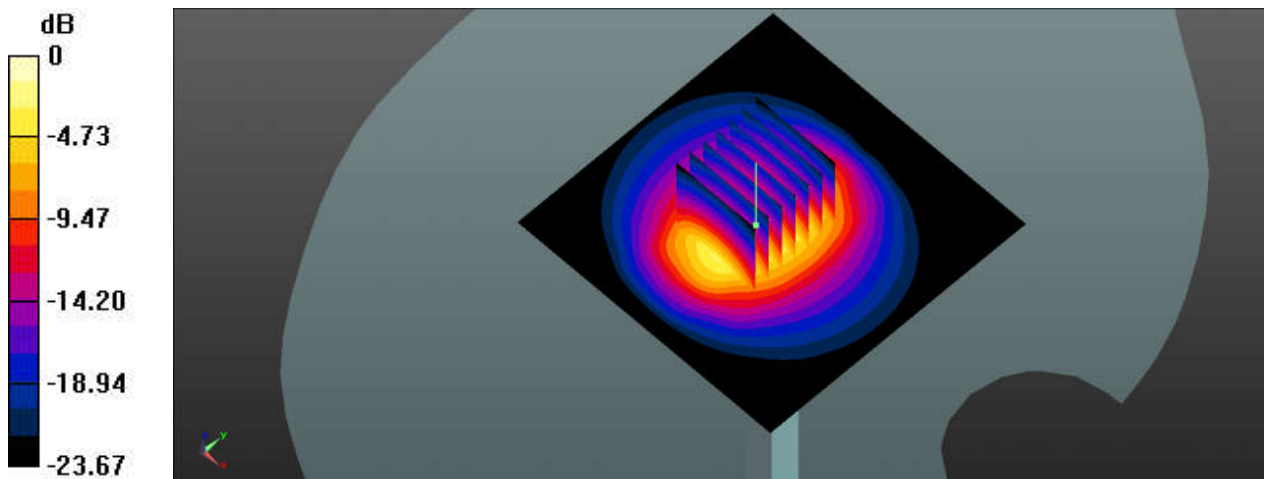
Communication System: UID 0, CW; Frequency: 2450 MHz; Duty Cycle: 1:1
Medium: HSL_2450_230302 Medium parameters used: $f = 2450$ MHz; $\sigma = 1.81$ S/m; $\epsilon_r = 37.626$; $\rho = 1000$ kg/m³
Ambient Temperature : 23.2 °C; Liquid Temperature : 22.5 °C

DASY5 Configuration:

- Probe: EX3DV4 - SN7576; ConvF(7.88, 7.88, 7.88); Calibrated: 2022/7/28
- Sensor-Surface: 1.4mm (Mechanical Surface Detection)
- Electronics: DAE4 Sn1664; Calibrated: 2022/5/30
- Phantom: SAM with CRP v5.0(Front); Type: QD000P40CD; Serial: 1671
- Measurement SW: DASY52, Version 52.10 (3); SEMCAD X Version 14.6.13 (7474)

Pin=250mW/Area Scan (81x81x1): Interpolated grid: dx=1.200 mm, dy=1.200 mm
Maximum value of SAR (interpolated) = 17.1 W/kg

Pin=250mW/Zoom Scan (7x7x7)/Cube 0: Measurement grid: dx=5mm, dy=5mm, dz=5mm
Reference Value = 85.82 V/m; Power Drift = -0.15 dB
Peak SAR (extrapolated) = 21.4 W/kg
SAR(1 g) = 12.3 W/kg; SAR(10 g) = 5.58 W/kg
Maximum value of SAR (measured) = 17.2 W/kg



0 dB = 17.2 W/kg

System Check_2450MHz

DUT: D2450V2-SN:924

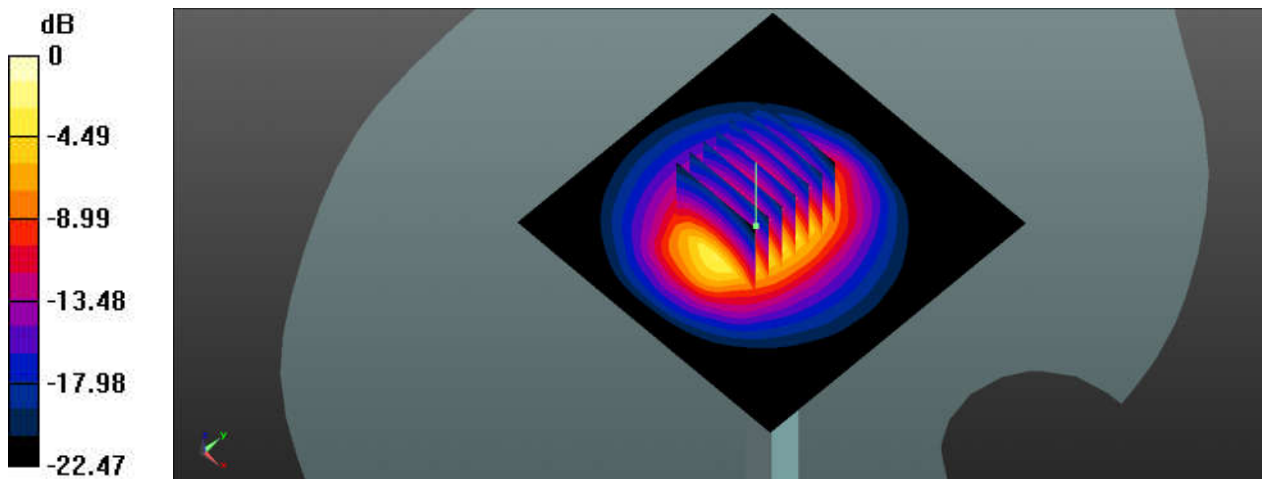
Communication System: UID 0, CW; Frequency: 2450 MHz; Duty Cycle: 1:1
Medium: HSL_2450_230303 Medium parameters used: $f = 2450$ MHz; $\sigma = 1.85$ S/m; $\epsilon_r = 38.467$; $\rho = 1000$ kg/m³
Ambient Temperature : 23.4 °C; Liquid Temperature : 22.4 °C

DASY5 Configuration:

- Probe: EX3DV4 - SN7576; ConvF(7.88, 7.88, 7.88); Calibrated: 2022/7/28
- Sensor-Surface: 1.4mm (Mechanical Surface Detection)
- Electronics: DAE4 Sn1664; Calibrated: 2022/5/30
- Phantom: SAM with CRP v5.0(Front); Type: QD000P40CD; Serial: 1671
- Measurement SW: DASY52, Version 52.10 (3); SEMCAD X Version 14.6.13 (7474)

Pin=250mW/Area Scan (81x81x1): Interpolated grid: dx=1.200 mm, dy=1.200 mm
Maximum value of SAR (interpolated) = 16.1 W/kg

Pin=250mW/Zoom Scan (7x7x7)/Cube 0: Measurement grid: dx=5mm, dy=5mm, dz=5mm
Reference Value = 70.02 V/m; Power Drift = 0.05 dB
Peak SAR (extrapolated) = 20.7 W/kg
SAR(1 g) = 12 W/kg; SAR(10 g) = 5.86 W/kg
Maximum value of SAR (measured) = 16.0 W/kg



0 dB = 16.0 W/kg

System Check_2600MHz

DUT: D2600V2-SN:1070

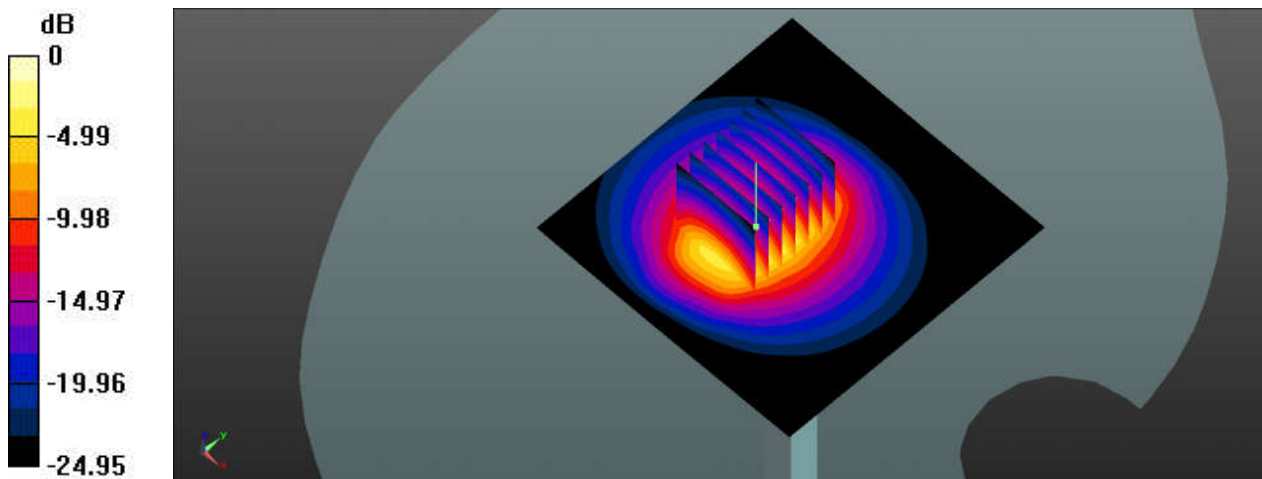
Communication System: UID 0, CW (0); Frequency: 2600 MHz; Duty Cycle: 1:1
Medium: HSL_2600_230304 Medium parameters used: $f = 2600$ MHz; $\sigma = 2.053$ S/m; $\epsilon_r = 38.007$;
 $\rho = 1000$ kg/m³
Ambient Temperature : 23.5 °C; Liquid Temperature : 22.2 °C

DASY5 Configuration:

- Probe: EX3DV4 - SN7576; ConvF(7.59, 7.59, 7.59); Calibrated: 2022/7/28
- Sensor-Surface: 1.4mm (Mechanical Surface Detection)
- Electronics: DAE4 Sn1664; Calibrated: 2022/5/30
- Phantom: SAM with CRP v5.0(Front); Type: QD000P40CD; Serial: 1671
- Measurement SW: DASY52, Version 52.10 (3); SEMCAD X Version 14.6.13 (7474)

Pin=250mW/Area Scan (81x81x1): Interpolated grid: dx=1.200 mm, dy=1.200 mm
Maximum value of SAR (interpolated) = 17.6 W/kg

Pin=250mW/Zoom Scan (7x7x7)/Cube 0: Measurement grid: dx=5mm, dy=5mm, dz=5mm
Reference Value = 60.92 V/m; Power Drift = 0.18 dB
Peak SAR (extrapolated) = 22.6 W/kg
SAR(1 g) = 13.2 W/kg; SAR(10 g) = 5.67 W/kg
Maximum value of SAR (measured) = 17.6 W/kg



0 dB = 17.6 W/kg

System Check_2600MHz

DUT: D2600V2-SN:1070

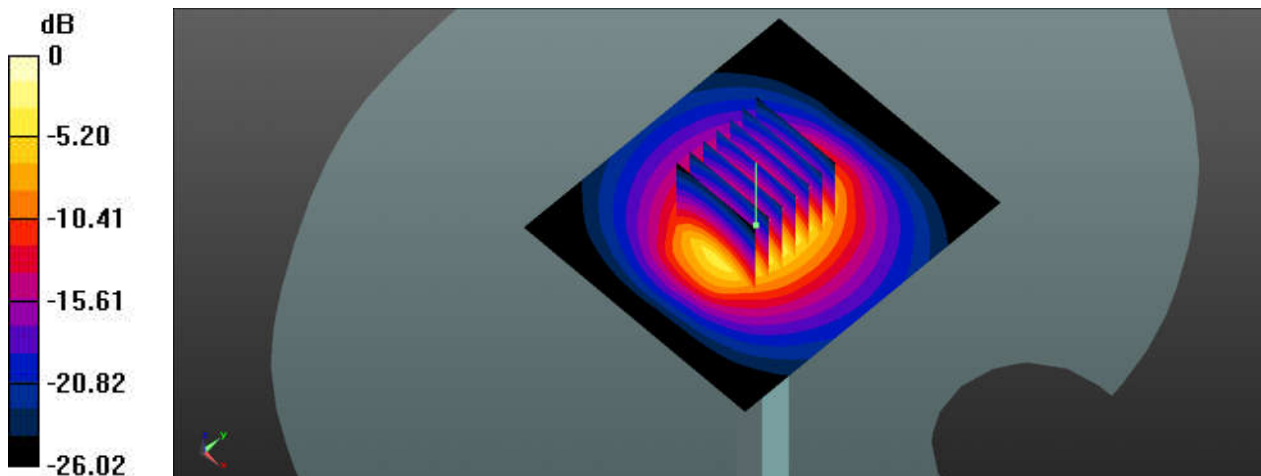
Communication System: UID 0, CW (0); Frequency: 2600 MHz; Duty Cycle: 1:1
Medium: HSL_2600_230306 Medium parameters used: $f = 2600$ MHz; $\sigma = 2.055$ S/m; $\epsilon_r = 38.316$;
 $\rho = 1000$ kg/m³
Ambient Temperature : 23.2 °C; Liquid Temperature : 22.4 °C

DASY5 Configuration:

- Probe: EX3DV4 - SN7576; ConvF(7.59, 7.59, 7.59); Calibrated: 2022/7/28
- Sensor-Surface: 1.4mm (Mechanical Surface Detection)
- Electronics: DAE4 Sn1664; Calibrated: 2022/5/30
- Phantom: SAM with CRP v5.0(Front); Type: QD000P40CD; Serial: 1671
- Measurement SW: DASY52, Version 52.10 (3); SEMCAD X Version 14.6.13 (7474)

Pin=250mW/Area Scan (71x81x1): Interpolated grid: dx=1.200 mm, dy=1.200 mm
Maximum value of SAR (interpolated) = 19.2 W/kg

Pin=250mW/Zoom Scan (7x7x7)/Cube 0: Measurement grid: dx=5mm, dy=5mm, dz=5mm
Reference Value = 107.2 V/m; Power Drift = 0.15 dB
Peak SAR (extrapolated) = 27.7 W/kg
SAR(1 g) = 13.6 W/kg; SAR(10 g) = 5.69 W/kg
Maximum value of SAR (measured) = 19.9 W/kg



0 dB = 19.9 W/kg

System Check_2600MHz

DUT: D2600V2-SN:1070

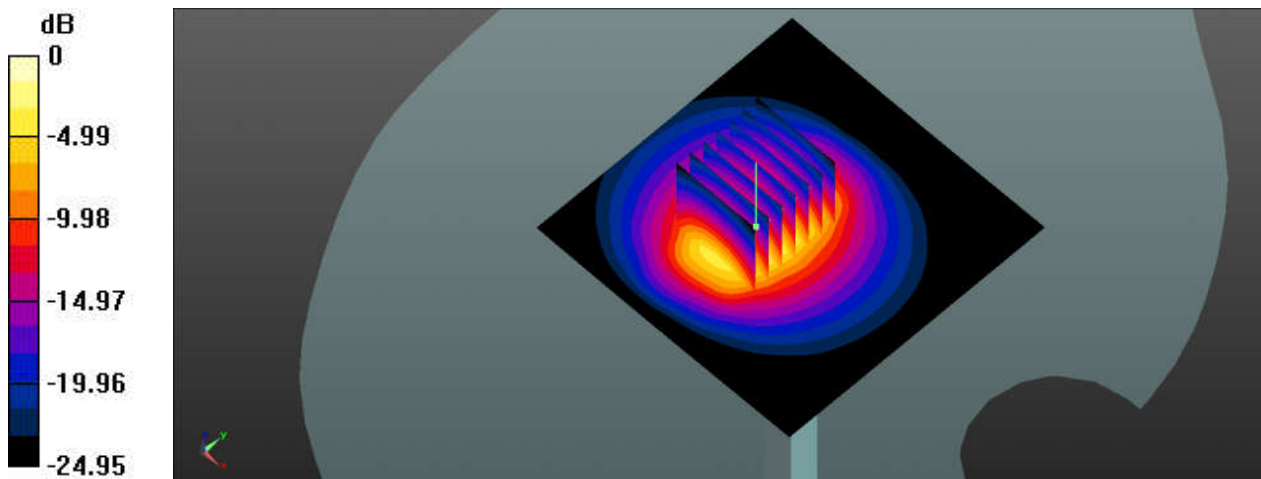
Communication System: UID 0, CW (0); Frequency: 2600 MHz; Duty Cycle: 1:1
Medium: HSL_2600_230307 Medium parameters used: $f = 2600$ MHz; $\sigma = 1.941$ S/m; $\epsilon_r = 37.736$;
 $\rho = 1000$ kg/m³
Ambient Temperature : 23.4 °C ; Liquid Temperature : 22.4 °C

DASY5 Configuration:

- Probe: EX3DV4 - SN7576; ConvF(7.59, 7.59, 7.59); Calibrated: 2022/7/28
- Sensor-Surface: 1.4mm (Mechanical Surface Detection)
- Electronics: DAE4 Sn1664; Calibrated: 2022/5/30
- Phantom: SAM with CRP v5.0(Front); Type: QD000P40CD; Serial: 1671
- Measurement SW: DASY52, Version 52.10 (3); SEMCAD X Version 14.6.13 (7474)

Pin=250mW/Area Scan (81x81x1): Interpolated grid: dx=1.200 mm, dy=1.200 mm
Maximum value of SAR (interpolated) = 16.1 W/kg

Pin=250mW/Zoom Scan (7x7x7)/Cube 0: Measurement grid: dx=5mm, dy=5mm, dz=5mm
Reference Value = 60.92 V/m; Power Drift = 0.08 dB
Peak SAR (extrapolated) = 20.8 W/kg
SAR(1 g) = 13.8 W/kg; SAR(10 g) = 5.84 W/kg
Maximum value of SAR (measured) = 16.1 W/kg



0 dB = 16.1 W/kg

System Check_3500MHz

DUT: D3500V2-SN:1037

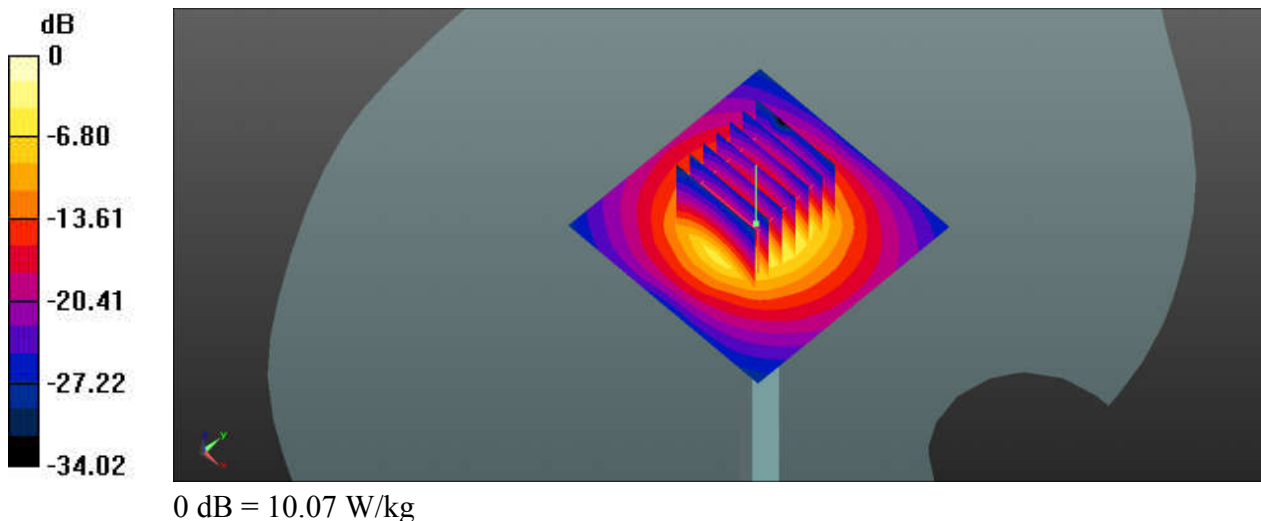
Communication System: UID 0, CW (0); Frequency: 3500 MHz; Duty Cycle: 1:1
Medium: HSL_3500_230308 Medium parameters used: $f = 3500 \text{ MHz}$; $\sigma = 2.813 \text{ S/m}$; $\epsilon_r = 39.758$;
 $\rho = 1000 \text{ kg/m}^3$
Ambient Temperature : $23.2 \text{ }^\circ\text{C}$; Liquid Temperature : $22.3 \text{ }^\circ\text{C}$

DASY5 Configuration:

- Probe: EX3DV4 - SN7576; ConvF(6.76, 6.76, 6.76); Calibrated: 2022/7/28
- Sensor-Surface: 1.4mm (Mechanical Surface Detection)
- Electronics: DAE4 Sn1664; Calibrated: 2022/5/30
- Phantom: SAM with CRP v5.0(Front); Type: QD000P40CD; Serial: 1671
- Measurement SW: DASY52, Version 52.10 (3); SEMCAD X Version 14.6.13 (7474)

Pin=100mW/Area Scan (61x61x1): Interpolated grid: $dx=1.200 \text{ mm}$, $dy=1.200 \text{ mm}$
Maximum value of SAR (interpolated) = 10.15 W/kg

Pin=100mW/Zoom Scan (7x7x7)/Cube 0: Measurement grid: $dx=5\text{mm}$, $dy=5\text{mm}$, $dz=1.4\text{mm}$
Reference Value = 59.17 V/m ; Power Drift = -0.1 dB
Peak SAR (extrapolated) = 12.1 W/kg
SAR(1 g) = 6.23 W/kg; SAR(10 g) = 2.36 W/kg
Maximum value of SAR (measured) = 10.07 W/kg



System Check_3500MHz

DUT: D3500V2-SN:1076

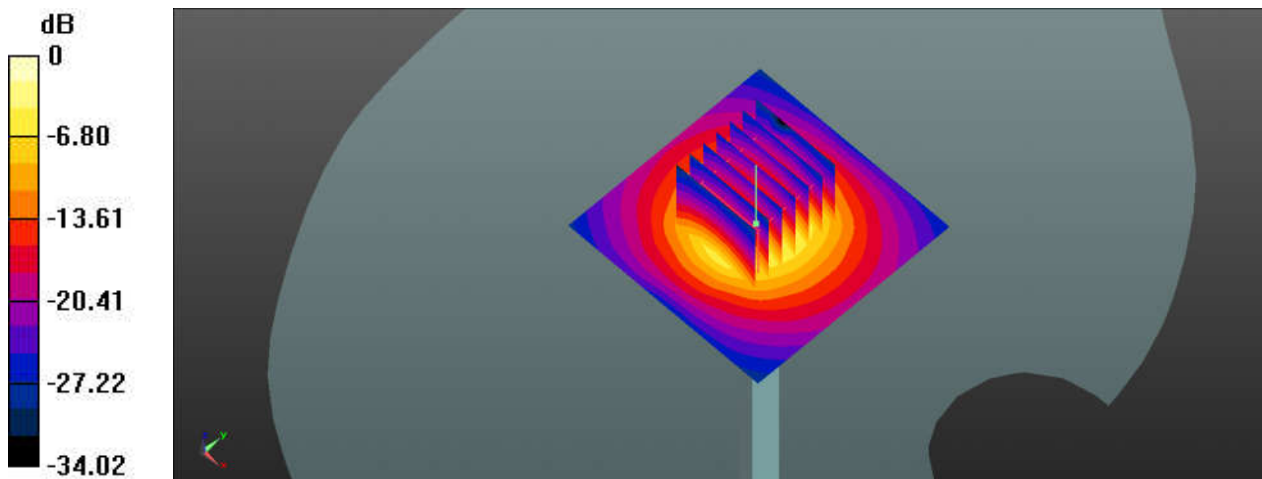
Communication System: UID 0, CW (0); Frequency: 3500 MHz; Duty Cycle: 1:1
Medium: HSL_3500_230310 Medium parameters used: $f = 3500$ MHz; $\sigma = 2.909$ S/m; $\epsilon_r = 38.635$;
 $\rho = 1000$ kg/m³
Ambient Temperature : 23.6 °C ; Liquid Temperature : 22.2 °C

DASY5 Configuration:

- Probe: EX3DV4 - SN7576; ConvF(6.76, 6.76, 6.76); Calibrated: 2022/7/28
- Sensor-Surface: 1.4mm (Mechanical Surface Detection)
- Electronics: DAE4 Sn1664; Calibrated: 2022/5/30
- Phantom: SAM with CRP v5.0(Front); Type: QD000P40CD; Serial: 1671
- Measurement SW: DASY52, Version 52.10 (3); SEMCAD X Version 14.6.13 (7474)

Pin=100mW/Area Scan (61x61x1): Interpolated grid: dx=1.200 mm, dy=1.200 mm
Maximum value of SAR (interpolated) = 10.10 W/kg

Pin=100mW/Zoom Scan (7x7x7)/Cube 0: Measurement grid: dx=5mm, dy=5mm, dz=1.4mm
Reference Value = 59.17 V/m; Power Drift = -0.12 dB
Peak SAR (extrapolated) = 14.6 W/kg
SAR(1 g) = 6.31 W/kg; SAR(10 g) = 2.41 W/kg
Maximum value of SAR (measured) = 10.18 W/kg



0 dB = 10.18 W/kg

System Check_3500MHz

DUT: D3500V2-SN:1076

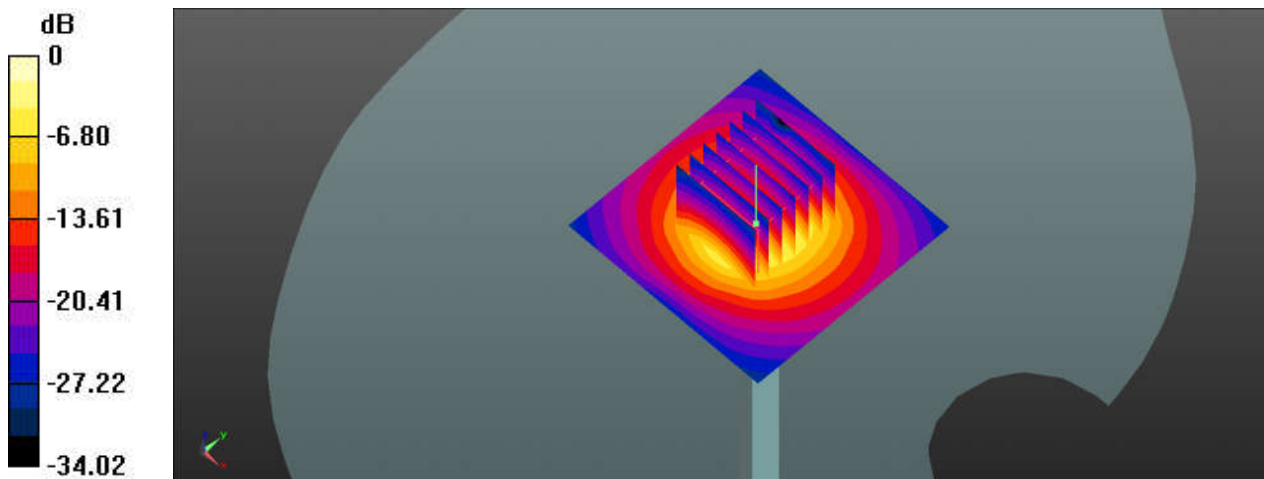
Communication System: UID 0, CW (0); Frequency: 3500 MHz; Duty Cycle: 1:1
Medium: HSL_3500_230311 Medium parameters used: $f = 3500$ MHz; $\sigma = 2.891$ S/m; $\epsilon_r = 36.555$;
 $\rho = 1000$ kg/m³
Ambient Temperature : 23.4 °C; Liquid Temperature : 22.4 °C

DASY5 Configuration:

- Probe: EX3DV4 - SN7576; ConvF(6.76, 6.76, 6.76); Calibrated: 2022/7/28
- Sensor-Surface: 1.4mm (Mechanical Surface Detection)
- Electronics: DAE4 Sn1664; Calibrated: 2022/5/30
- Phantom: SAM with CRP v5.0(Front); Type: QD000P40CD; Serial: 1671
- Measurement SW: DASY52, Version 52.10 (3); SEMCAD X Version 14.6.13 (7474)

Pin=100mW/Area Scan (61x61x1): Interpolated grid: dx=1.200 mm, dy=1.200 mm
Maximum value of SAR (interpolated) = 11.3 W/kg

Pin=100mW/Zoom Scan (7x7x7)/Cube 0: Measurement grid: dx=5mm, dy=5mm, dz=1.4mm
Reference Value = 59.17 V/m; Power Drift = -0.01 dB
Peak SAR (extrapolated) = 14.4 W/kg
SAR(1 g) = 6.44 W/kg; SAR(10 g) = 2.52 W/kg
Maximum value of SAR (measured) = 11.81 W/kg



0 dB = 11.81 W/kg

System Check_3700MHz

DUT: D3700V2-SN:1037

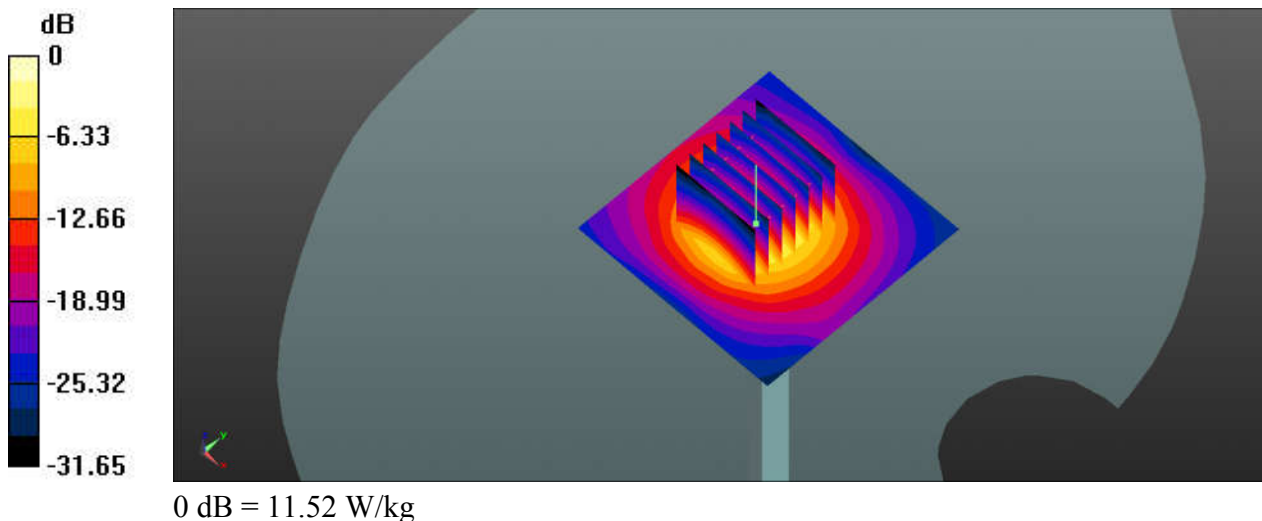
Communication System: UID 0, CW (0); Frequency: 3700 MHz; Duty Cycle: 1:1
Medium: HSL_3700_230312 Medium parameters used: $f = 3700$ MHz; $\sigma = 3.199$ S/m; $\epsilon_r = 38.142$;
 $\rho = 1000$ kg/m³
Ambient Temperature : 23.3 °C; Liquid Temperature : 22.2 °C

DASY5 Configuration:

- Probe: EX3DV4 - SN7576; ConvF(6.73, 6.73, 6.73); Calibrated: 2022/7/28
- Sensor-Surface: 1.4mm (Mechanical Surface Detection)
- Electronics: DAE4 Sn1664; Calibrated: 2022/5/30
- Phantom: SAM with CRP v5.0(Front); Type: QD000P40CD; Serial: 1671
- Measurement SW: DASY52, Version 52.10 (3); SEMCAD X Version 14.6.13 (7474)

Pin=100mW/Area Scan (61x61x1): Interpolated grid: dx=1.200 mm, dy=1.200 mm
Maximum value of SAR (interpolated) = 11.64 W/kg

Pin=100mW/Zoom Scan (7x7x7)/Cube 0: Measurement grid: dx=5mm, dy=5mm, dz=1.4mm
Reference Value = 55.24 V/m; Power Drift = 0.17 dB
Peak SAR (extrapolated) = 14.7 W/kg
SAR(1 g) = 6.51 W/kg; SAR(10 g) = 2.56 W/kg
Maximum value of SAR (measured) = 11.52 W/kg



System Check_3700MHz

DUT: D3700V2-SN:1037

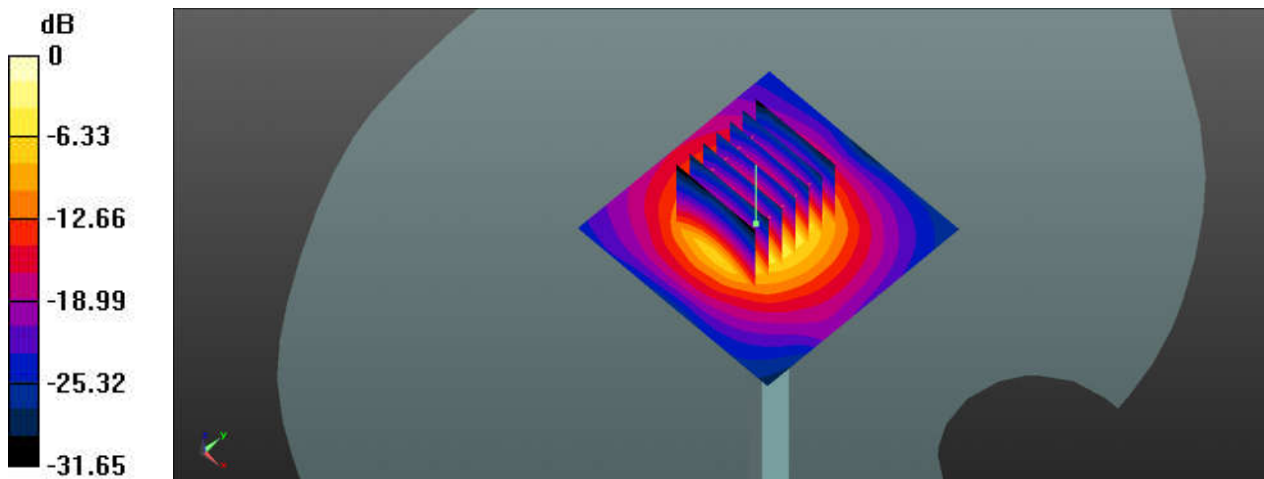
Communication System: UID 0, CW (0); Frequency: 3700 MHz; Duty Cycle: 1:1
Medium: HSL_3700_230314 Medium parameters used: $f = 3700 \text{ MHz}$; $\sigma = 3.054 \text{ S/m}$; $\epsilon_r = 38.374$;
 $\rho = 1000 \text{ kg/m}^3$
Ambient Temperature : $23.2 \text{ }^\circ\text{C}$; Liquid Temperature : $22.4 \text{ }^\circ\text{C}$

DASY5 Configuration:

- Probe: EX3DV4 - SN7576; ConvF(6.73, 6.73, 6.73); Calibrated: 2022/7/28
- Sensor-Surface: 1.4mm (Mechanical Surface Detection)
- Electronics: DAE4 Sn1664; Calibrated: 2022/5/30
- Phantom: SAM with CRP v5.0(Front); Type: QD000P40CD; Serial: 1671
- Measurement SW: DASY52, Version 52.10 (3); SEMCAD X Version 14.6.13 (7474)

Pin=100mW/Area Scan (61x61x1): Interpolated grid: $dx=1.200 \text{ mm}$, $dy=1.200 \text{ mm}$
Maximum value of SAR (interpolated) = 11.02 W/kg

Pin=100mW/Zoom Scan (7x7x7)/Cube 0: Measurement grid: $dx=5\text{mm}$, $dy=5\text{mm}$, $dz=1.4\text{mm}$
Reference Value = 55.24 V/m ; Power Drift = -0.16 dB
Peak SAR (extrapolated) = 14.9 W/kg
SAR(1 g) = 6.21 W/kg ; SAR(10 g) = 2.31 W/kg
Maximum value of SAR (measured) = 11.05 W/kg



0 dB = 11.05 W/kg

System Check_3700MHz

DUT: D3700V2-SN:1037

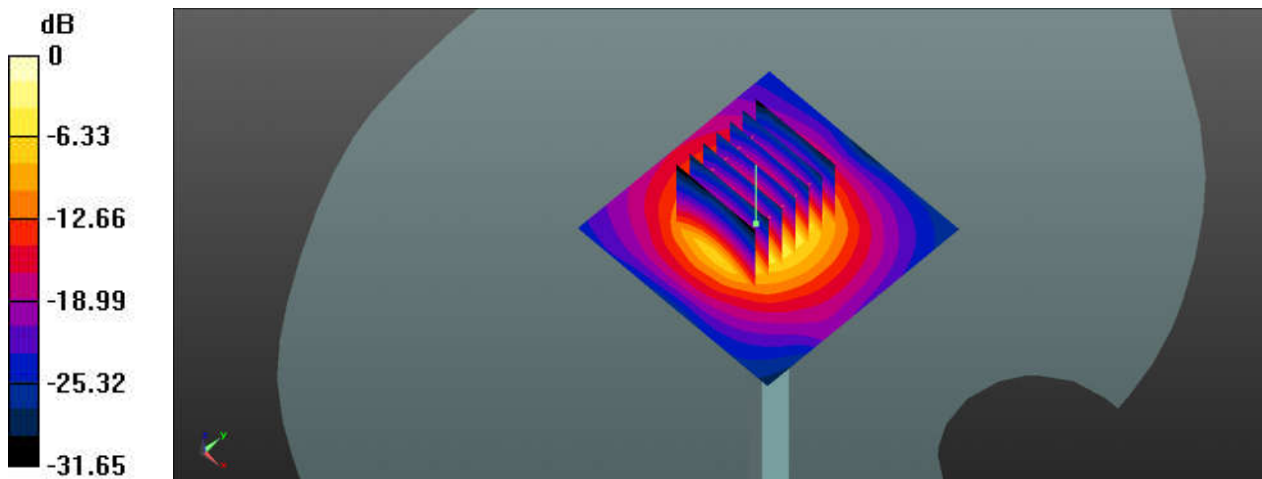
Communication System: UID 0, CW (0); Frequency: 3700 MHz; Duty Cycle: 1:1
Medium: HSL_3700_230315 Medium parameters used: $f = 3700$ MHz; $\sigma = 3.112$ S/m; $\epsilon_r = 38.554$;
 $\rho = 1000$ kg/m³
Ambient Temperature : 23.5 °C ; Liquid Temperature : 22.4 °C

DASY5 Configuration:

- Probe: EX3DV4 - SN7576; ConvF(6.73, 6.73, 6.73); Calibrated: 2022/7/28
- Sensor-Surface: 1.4mm (Mechanical Surface Detection)
- Electronics: DAE4 Sn1664; Calibrated: 2022/5/30
- Phantom: SAM with CRP v5.0(Front); Type: QD000P40CD; Serial: 1671
- Measurement SW: DASY52, Version 52.10 (3); SEMCAD X Version 14.6.13 (7474)

Pin=100mW/Area Scan (61x61x1): Interpolated grid: dx=1.200 mm, dy=1.200 mm
Maximum value of SAR (interpolated) = 12.1 W/kg

Pin=100mW/Zoom Scan (7x7x7)/Cube 0: Measurement grid: dx=5mm, dy=5mm, dz=1.4mm
Reference Value = 55.24 V/m; Power Drift = 0.17 dB
Peak SAR (extrapolated) = 15.6 W/kg
SAR(1 g) = 6.34 W/kg; SAR(10 g) = 2.33 W/kg
Maximum value of SAR (measured) = 12.1 W/kg



0 dB = 12.1 W/kg

System Check_3900MHz

DUT: D3700V2-SN:1022

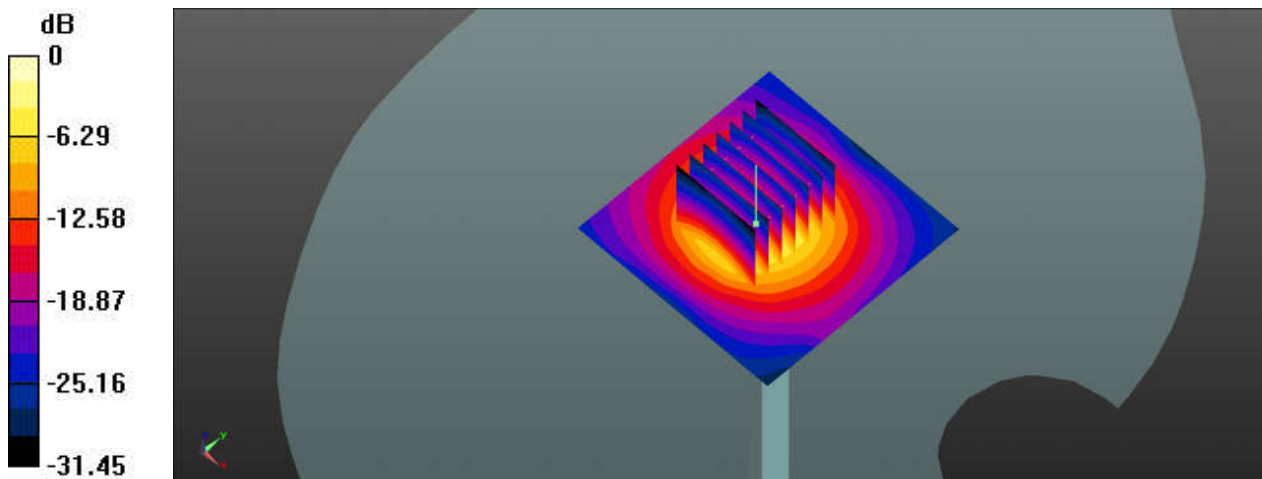
Communication System: UID 0, CW (0); Frequency: 3900 MHz; Duty Cycle: 1:1
Medium: HSL_3900_230316 Medium parameters used: $f = 3900$ MHz; $\sigma = 3.208$ S/m; $\epsilon_r = 37.743$;
 $\rho = 1000$ kg/m³
Ambient Temperature : 23.2 °C; Liquid Temperature : 22.4 °C

DASY5 Configuration:

- Probe: EX3DV4 - SN7576; ConvF(6.53, 6.53, 6.53); Calibrated: 2022/7/28
- Sensor-Surface: 1.4mm (Mechanical Surface Detection)
- Electronics: DAE4 Sn1664; Calibrated: 2022/5/30
- Phantom: SAM with CRP v5.0(Front); Type: QD000P40CD; Serial: 1671
- Measurement SW: DASY52, Version 52.10 (3); SEMCAD X Version 14.6.13 (7474)

Pin=100mW/Area Scan (61x61x1): Interpolated grid: dx=1.200 mm, dy=1.200 mm
Maximum value of SAR (interpolated) = 13.3 W/kg

Pin=100mW/Zoom Scan (7x7x7)/Cube 0: Measurement grid: dx=5mm, dy=5mm, dz=1.4mm
Reference Value = 56.08 V/m; Power Drift = -0.09 dB
Peak SAR (extrapolated) = 18.4 W/kg
SAR(1 g) = 6.35 W/kg; SAR(10 g) = 2.28 W/kg
Maximum value of SAR (measured) = 13.1 W/kg



0 dB = 13.1 W/kg

System Check_3900MHz

DUT: D3700V2-SN:1022

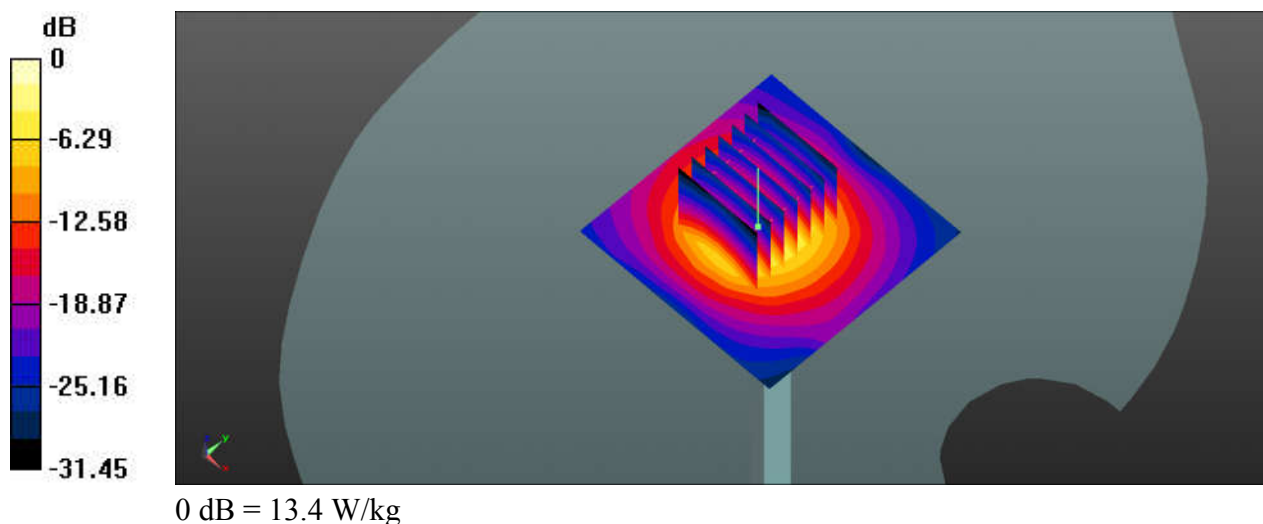
Communication System: UID 0, CW (0); Frequency: 3900 MHz; Duty Cycle: 1:1
Medium: HSL_3900_230318 Medium parameters used: $f = 3900$ MHz; $\sigma = 3.271$ S/m; $\epsilon_r = 37.765$;
 $\rho = 1000$ kg/m³
Ambient Temperature : 23.5 °C; Liquid Temperature : 22.4 °C

DASY5 Configuration:

- Probe: EX3DV4 - SN7576; ConvF(6.53, 6.53, 6.53); Calibrated: 2022/7/28
- Sensor-Surface: 1.4mm (Mechanical Surface Detection)
- Electronics: DAE4 Sn1664; Calibrated: 2022/5/30
- Phantom: SAM with CRP v5.0(Front); Type: QD000P40CD; Serial: 1671
- Measurement SW: DASY52, Version 52.10 (3); SEMCAD X Version 14.6.13 (7474)

Pin=100mW/Area Scan (61x61x1): Interpolated grid: dx=1.200 mm, dy=1.200 mm
Maximum value of SAR (interpolated) = 13.4 W/kg

Pin=100mW/Zoom Scan (7x7x7)/Cube 0: Measurement grid: dx=5mm, dy=5mm, dz=1.4mm
Reference Value = 56.08 V/m; Power Drift = 0.05 dB
Peak SAR (extrapolated) = 18.4 W/kg
SAR(1 g) = 6.41 W/kg; SAR(10 g) = 2.24 W/kg
Maximum value of SAR (measured) = 13.4 W/kg



System Check_3900MHz

DUT: D3700V2-SN:1022

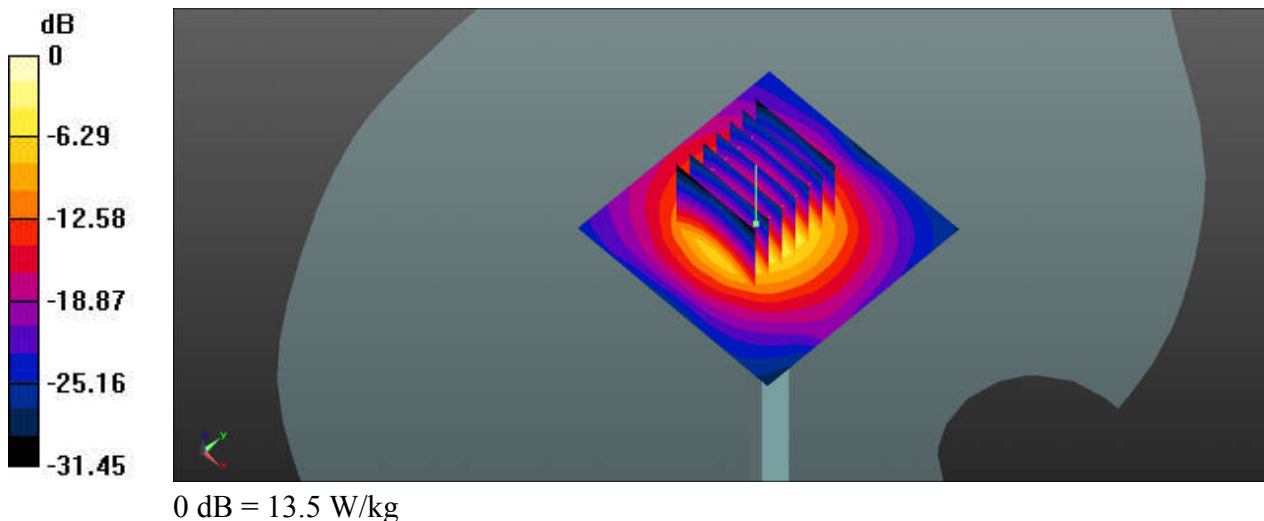
Communication System: UID 0, CW (0); Frequency: 3900 MHz;Duty Cycle: 1:1
Medium: HSL_3900_230319 Medium parameters used: $f = 3900$ MHz; $\sigma = 3.312$ S/m; $\epsilon_r = 38.414$;
 $\rho = 1000$ kg/m³
Ambient Temperature : 23.3 °C ; Liquid Temperature : 22.2 °C

DASY5 Configuration:

- Probe: EX3DV4 - SN7576; ConvF(6.53, 6.53, 6.53); Calibrated: 2022/7/28
- Sensor-Surface: 1.4mm (Mechanical Surface Detection)
- Electronics: DAE4 Sn1664; Calibrated: 2022/5/30
- Phantom: SAM with CRP v5.0(Front); Type: QD000P40CD; Serial: 1671
- Measurement SW: DASY52, Version 52.10 (3); SEMCAD X Version 14.6.13 (7474)

Pin=100mW/Area Scan (61x61x1): Interpolated grid: dx=1.200 mm, dy=1.200 mm
Maximum value of SAR (interpolated) = 13.8 W/kg

Pin=100mW/Zoom Scan (7x7x7)/Cube 0: Measurement grid: dx=5mm, dy=5mm, dz=1.4mm
Reference Value = 56.08 V/m; Power Drift = 0.09 dB
Peak SAR (extrapolated) = 18.9 W/kg
SAR(1 g) = 6.56 W/kg; SAR(10 g) = 2.19 W/kg
Maximum value of SAR (measured) = 13.5 W/kg



System Check_5250MHz

DUT: D5GHzV2-SN:1341

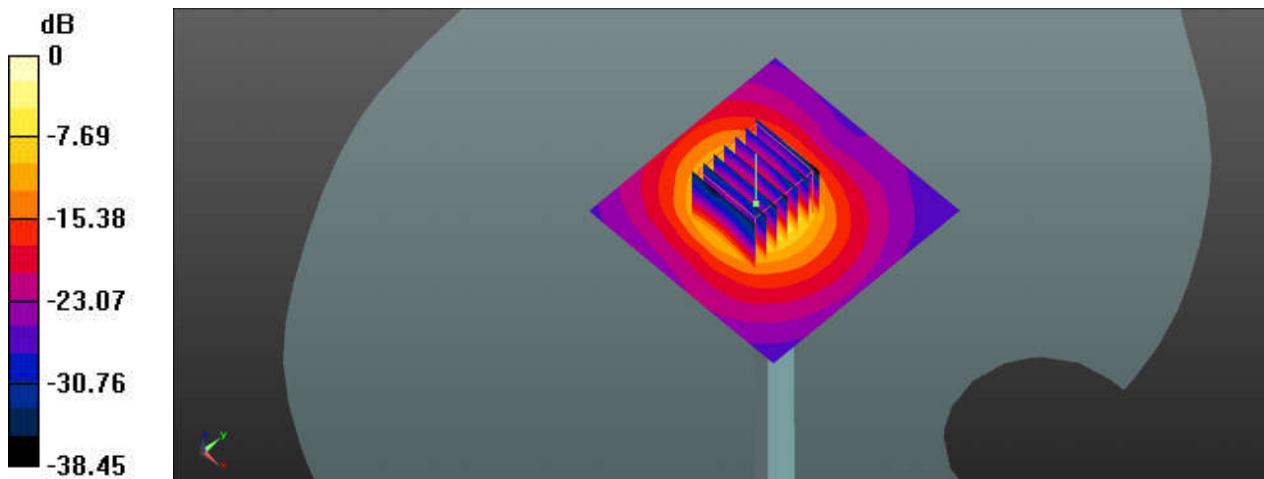
Communication System: UID 0, CW (0); Frequency: 5250 MHz; Duty Cycle: 1:1
Medium: HSL_5250_230320 Medium parameters used: $f = 5250$ MHz; $\sigma = 4.764$ S/m; $\epsilon_r = 36.965$;
 $\rho = 1000$ kg/m³
Ambient Temperature : 23.6 °C ; Liquid Temperature : 22.4 °C

DASY5 Configuration:

- Probe: EX3DV4 - SN7576; ConvF(5.29, 5.29, 5.29); Calibrated: 2022/7/28
- Sensor-Surface: 1.4mm (Mechanical Surface Detection)
- Electronics: DAE4 Sn1664; Calibrated: 2022/5/30
- Phantom: SAM with CRP v5.0(Front); Type: QD000P40CD; Serial: 1671
- Measurement SW: DASY52, Version 52.10 (3); SEMCAD X Version 14.6.13 (7474)

Pin=100mW/Area Scan (71x71x1): Interpolated grid: dx=1.000 mm, dy=1.000 mm
Maximum value of SAR (interpolated) = 15.9 W/kg

Pin=100mW/Zoom Scan (7x7x7)/Cube 0: Measurement grid: dx=4mm, dy=4mm, dz=1.4mm
Reference Value = 35.10 V/m; Power Drift = 0.08 dB
Peak SAR (extrapolated) = 25.0 W/kg
SAR(1 g) = 7.61 W/kg; SAR(10 g) = 2.44 W/kg
Maximum value of SAR (measured) = 16.2 W/kg



0 dB = 16.2 W/kg

System Check_5250MHz

DUT: D5GHzV2-SN:1341

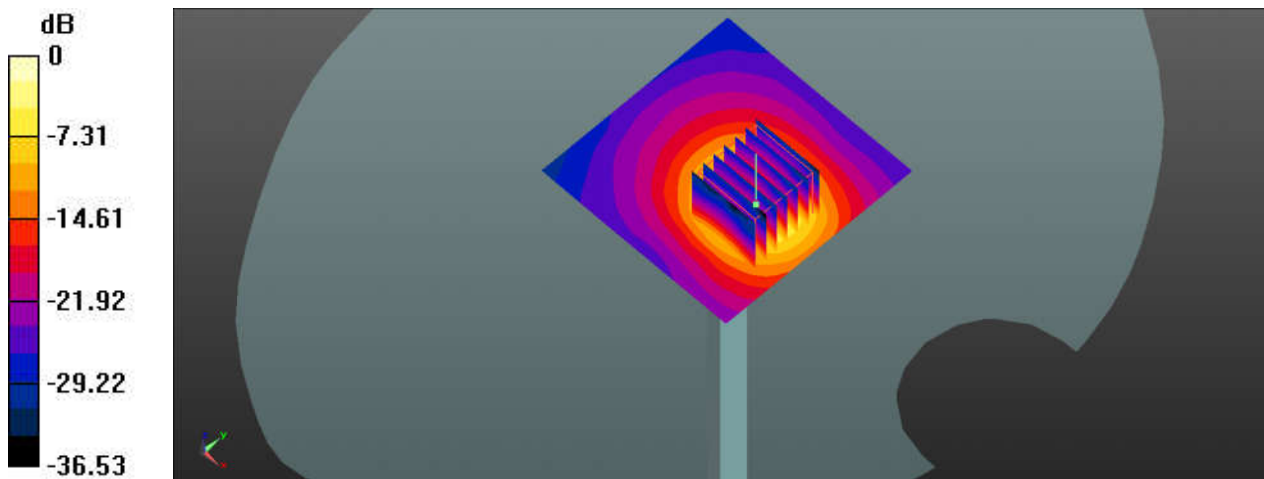
Communication System: UID 0, CW (0); Frequency: 5250 MHz; Duty Cycle: 1:1
Medium: HSL_5250_230322 Medium parameters used: $f = 5250$ MHz; $\sigma = 4.767$ S/m; $\epsilon_r = 36.98$; $\rho = 1000$ kg/m³
Ambient Temperature : 23.5 °C; Liquid Temperature : 22.3 °C

DASY5 Configuration:

- Probe: EX3DV4 - SN7576; ConvF(5.29, 5.29, 5.29); Calibrated: 2022/7/28
- Sensor-Surface: 1.4mm (Mechanical Surface Detection)
- Electronics: DAE4 Sn1664; Calibrated: 2022/5/30
- Phantom: SAM with CRP v5.0(Front); Type: QD000P40CD; Serial: 1671
- Measurement SW: DASY52, Version 52.10 (3); SEMCAD X Version 14.6.13 (7474)

Pin=100mW/Area Scan (71x71x1): Interpolated grid: dx=1.000 mm, dy=1.000 mm
Maximum value of SAR (interpolated) = 13.8 W/kg

Pin=100mW/Zoom Scan (7x7x7)/Cube 0: Measurement grid: dx=4mm, dy=4mm, dz=1.4mm
Reference Value = 21.85 V/m; Power Drift = -0.03 dB
Peak SAR (extrapolated) = 25.2 W/kg
SAR(1 g) = 7.79 W/kg; SAR(10 g) = 2.42 W/kg
Maximum value of SAR (measured) = 13.7 W/kg



System Check_5250MHz

DUT: D5GHzV2-SN:1341

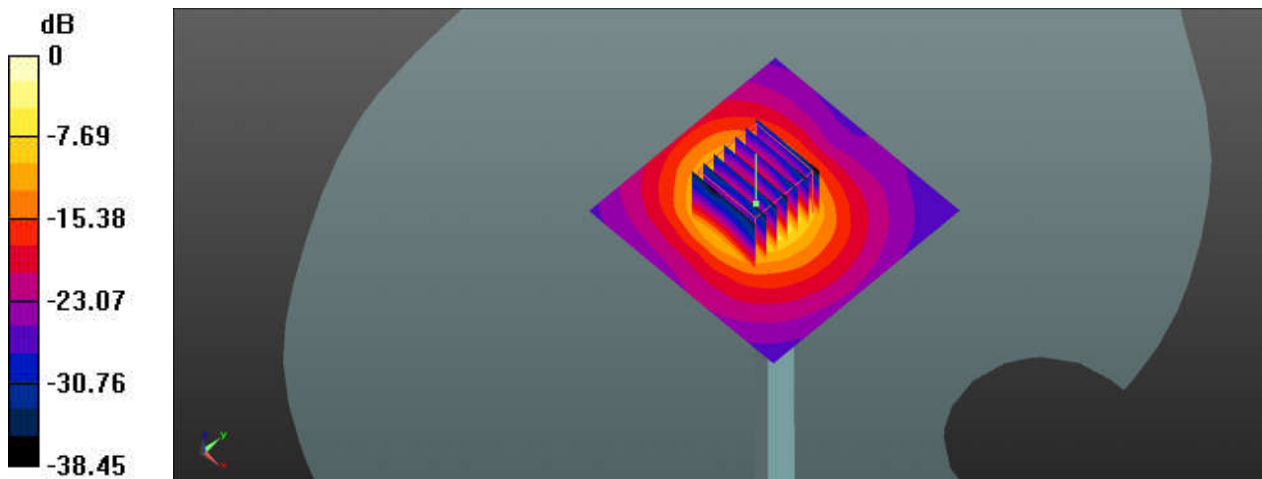
Communication System: UID 0, CW (0); Frequency: 5250 MHz;Duty Cycle: 1:1
Medium: HSL_5250_230323 Medium parameters used: $f = 5250$ MHz; $\sigma = 4.488$ S/m; $\epsilon_r = 37.097$;
 $\rho = 1000$ kg/m³
Ambient Temperature : 23.2 °C ; Liquid Temperature : 22.3 °C

DASY5 Configuration:

- Probe: EX3DV4 - SN7576; ConvF(5.29, 5.29, 5.29); Calibrated: 2022/7/28
- Sensor-Surface: 1.4mm (Mechanical Surface Detection)
- Electronics: DAE4 Sn1664; Calibrated: 2022/5/30
- Phantom: SAM with CRP v5.0(Front); Type: QD000P40CD; Serial: 1671
- Measurement SW: DASY52, Version 52.10 (3); SEMCAD X Version 14.6.13 (7474)

Pin=100mW/Area Scan (71x71x1): Interpolated grid: dx=1.000 mm, dy=1.000 mm
Maximum value of SAR (interpolated) = 15.1 W/kg

Pin=100mW/Zoom Scan (7x7x7)/Cube 0: Measurement grid: dx=4mm, dy=4mm, dz=1.4mm
Reference Value = 35.10 V/m; Power Drift = 0.18 dB
Peak SAR (extrapolated) = 23.7 W/kg
SAR(1 g) = 7.49 W/kg; SAR(10 g) = 2.45 W/kg
Maximum value of SAR (measured) = 15.4 W/kg



0 dB = 15.4 W/kg

System Check_5600MHz

DUT: D5GHzV2-SN:1341

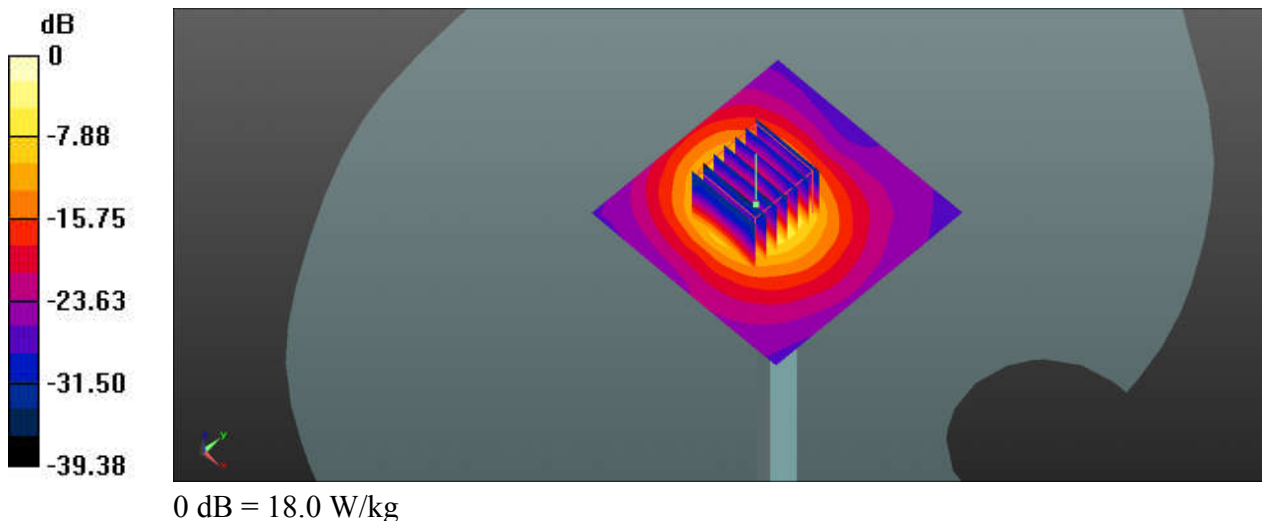
Communication System: UID 0, CW (0); Frequency: 5600 MHz; Duty Cycle: 1:1
Medium: HSL_5600_230324 Medium parameters used: $f = 5600$ MHz; $\sigma = 5.207$ S/m; $\epsilon_r = 36.212$;
 $\rho = 1000$ kg/m³
Ambient Temperature : 23.5 °C; Liquid Temperature : 22.2 °C

DASY5 Configuration:

- Probe: EX3DV4 - SN7576; ConvF(4.68, 4.68, 4.68); Calibrated: 2022/7/28
- Sensor-Surface: 1.4mm (Mechanical Surface Detection)
- Electronics: DAE4 Sn1664; Calibrated: 2022/5/30
- Phantom: SAM with CRP v5.0(Front); Type: QD000P40CD; Serial: 1671
- Measurement SW: DASY52, Version 52.10 (3); SEMCAD X Version 14.6.13 (7474)

Pin=100mW/Area Scan (71x71x1): Interpolated grid: dx=1.000 mm, dy=1.000 mm
Maximum value of SAR (interpolated) = 18.1 W/kg

Pin=100mW/Zoom Scan (7x7x7)/Cube 0: Measurement grid: dx=4mm, dy=4mm, dz=1.4mm
Reference Value = 38.06 V/m; Power Drift = 0.18 dB
Peak SAR (extrapolated) = 29.8 W/kg
SAR(1 g) = 7.86 W/kg; SAR(10 g) = 2.21 W/kg
Maximum value of SAR (measured) = 18.0 W/kg



System Check_5600MHz

DUT: D5GHzV2-SN:1341

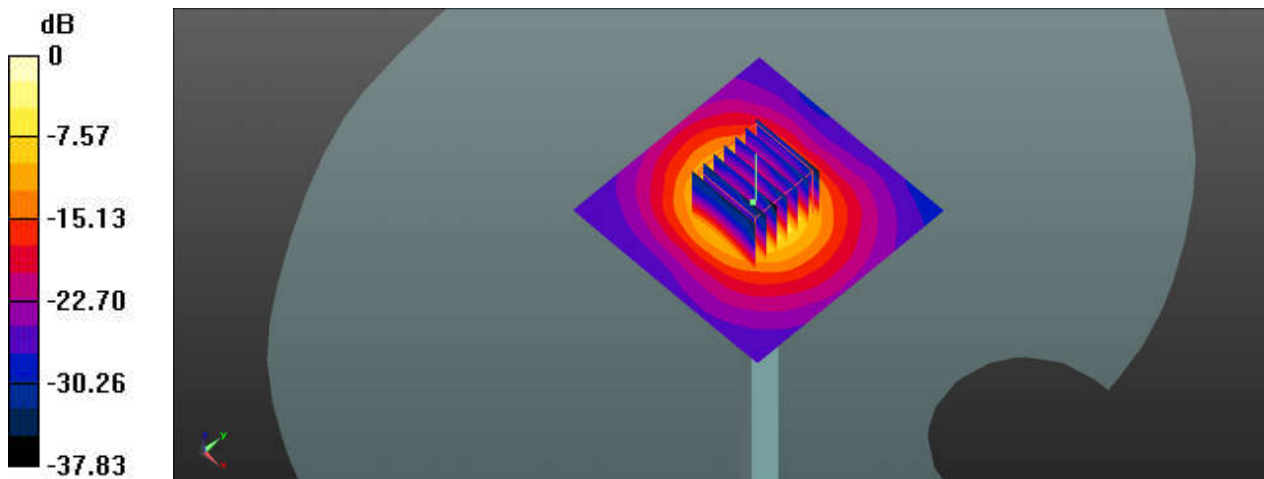
Communication System: UID 0, CW (0); Frequency: 5600 MHz; Duty Cycle: 1:1
Medium: HSL_5600_230326 Medium parameters used: $f = 5600$ MHz; $\sigma = 5.211$ S/m; $\epsilon_r = 36.228$;
 $\rho = 1000$ kg/m³
Ambient Temperature : 23.3 °C ; Liquid Temperature : 22.6 °C

DASY5 Configuration:

- Probe: EX3DV4 - SN7576; ConvF(4.68, 4.68, 4.68); Calibrated: 2022/7/28
- Sensor-Surface: 1.4mm (Mechanical Surface Detection)
- Electronics: DAE4 Sn1664; Calibrated: 2022/5/30
- Phantom: SAM with CRP v5.0(Front); Type: QD000P40CD; Serial: 1671
- Measurement SW: DASY52, Version 52.10 (3); SEMCAD X Version 14.6.13 (7474)

Pin=100mW/Area Scan (71x71x1): Interpolated grid: dx=1.000 mm, dy=1.000 mm
Maximum value of SAR (interpolated) = 18.3 W/kg

Pin=100mW/Zoom Scan (7x7x7)/Cube 0: Measurement grid: dx=4mm, dy=4mm, dz=1.4mm
Reference Value = 45.77 V/m; Power Drift = 0.1 dB
Peak SAR (extrapolated) = 30.1 W/kg
SAR(1 g) = 8.02 W/kg; SAR(10 g) = 2.35 W/kg
Maximum value of SAR (measured) = 18.5 W/kg



0 dB = 18.5 W/kg

System Check_5600MHz

DUT: D5GHzV2-SN:1341

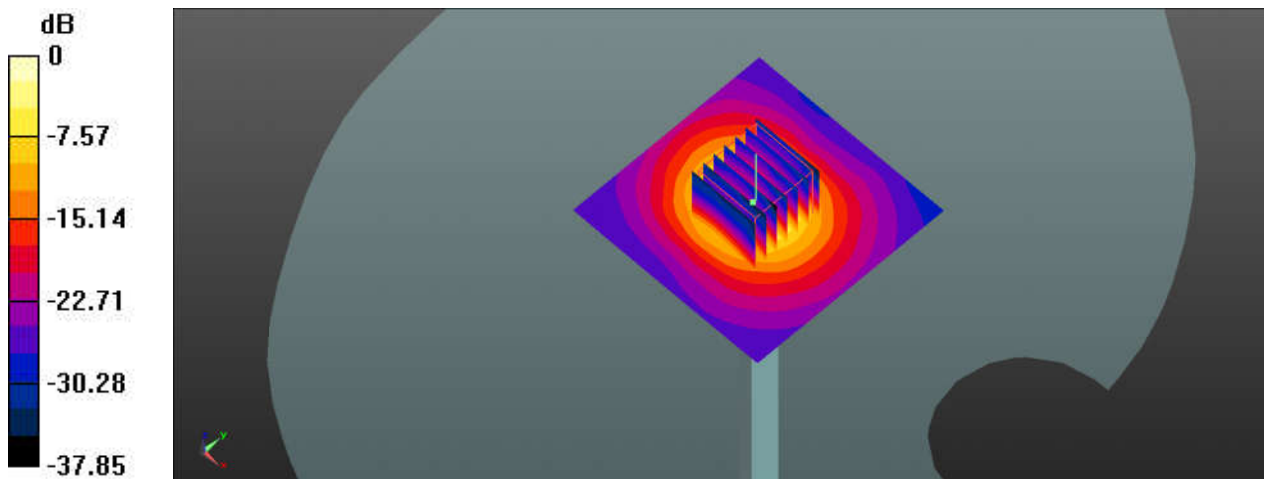
Communication System: UID 0, CW (0); Frequency: 5600 MHz; Duty Cycle: 1:1
Medium: HSL_5600_230327 Medium parameters used: $f = 5600$ MHz; $\sigma = 5.124$ S/m; $\epsilon_r = 35.657$;
 $\rho = 1000$ kg/m³
Ambient Temperature : 23.4 °C; Liquid Temperature : 22.3 °C

DASY5 Configuration:

- Probe: EX3DV4 - SN7576; ConvF(4.68, 4.68, 4.68); Calibrated: 2022/7/28
- Sensor-Surface: 1.4mm (Mechanical Surface Detection)
- Electronics: DAE4 Sn1664; Calibrated: 2022/5/30
- Phantom: SAM with CRP v5.0(Front); Type: QD000P40CD; Serial: 1671
- Measurement SW: DASY52, Version 52.10 (3); SEMCAD X Version 14.6.13 (7474)

Pin=100mW/Area Scan (71x71x1): Interpolated grid: dx=1.000 mm, dy=1.000 mm
Maximum value of SAR (interpolated) = 17.7 W/kg

Pin=100mW/Zoom Scan (7x7x7)/Cube 0: Measurement grid: dx=4mm, dy=4mm, dz=1.4mm
Reference Value = 45.77 V/m; Power Drift = 0.1 dB
Peak SAR (extrapolated) = 30.2 W/kg
SAR(1 g) = 8.31 W/kg; SAR(10 g) = 2.33 W/kg
Maximum value of SAR (measured) = 19.0 W/kg



0 dB = 19.0 W/kg

System Check_5750MHz

DUT: D5GHzV2-SN:1341

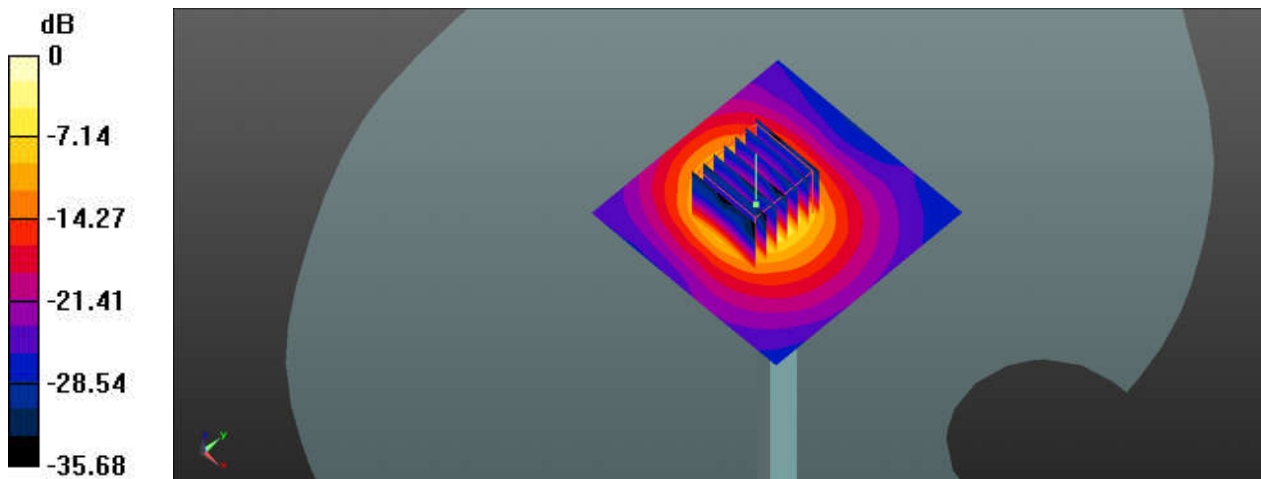
Communication System: UID 0, CW (0); Frequency: 5750 MHz;Duty Cycle: 1:1
Medium: HSL_5750_230328 Medium parameters used: $f = 5750$ MHz; $\sigma = 5.382$ S/m; $\epsilon_r = 35.934$;
 $\rho = 1000$ kg/m³
Ambient Temperature : 23.6 °C ; Liquid Temperature : 22.4 °C

DASY5 Configuration:

- Probe: EX3DV4 - SN7576; ConvF(4.88, 4.88, 4.88); Calibrated: 2022/7/28
- Sensor-Surface: 1.4mm (Mechanical Surface Detection)
- Electronics: DAE4 Sn1664; Calibrated: 2022/5/30
- Phantom: SAM with CRP v5.0(Front); Type: QD000P40CD; Serial: 1671
- Measurement SW: DASY52, Version 52.10 (3); SEMCAD X Version 14.6.13 (7474)

Pin=100mW/Area Scan (71x71x1): Interpolated grid: dx=1.000 mm, dy=1.000 mm
Maximum value of SAR (interpolated) = 16.9 W/kg

Pin=100mW/Zoom Scan (7x7x7)/Cube 0: Measurement grid: dx=4mm, dy=4mm, dz=1.4mm
Reference Value = 34.55 V/m; Power Drift = 0.18 dB
Peak SAR (extrapolated) = 27.3 W/kg
SAR(1 g) = 7.54 W/kg; SAR(10 g) = 2.11 W/kg
Maximum value of SAR (measured) = 16.2 W/kg



0 dB = 16.2 W/kg

System Check_5750MHz

DUT: D5GHzV2-SN:1341

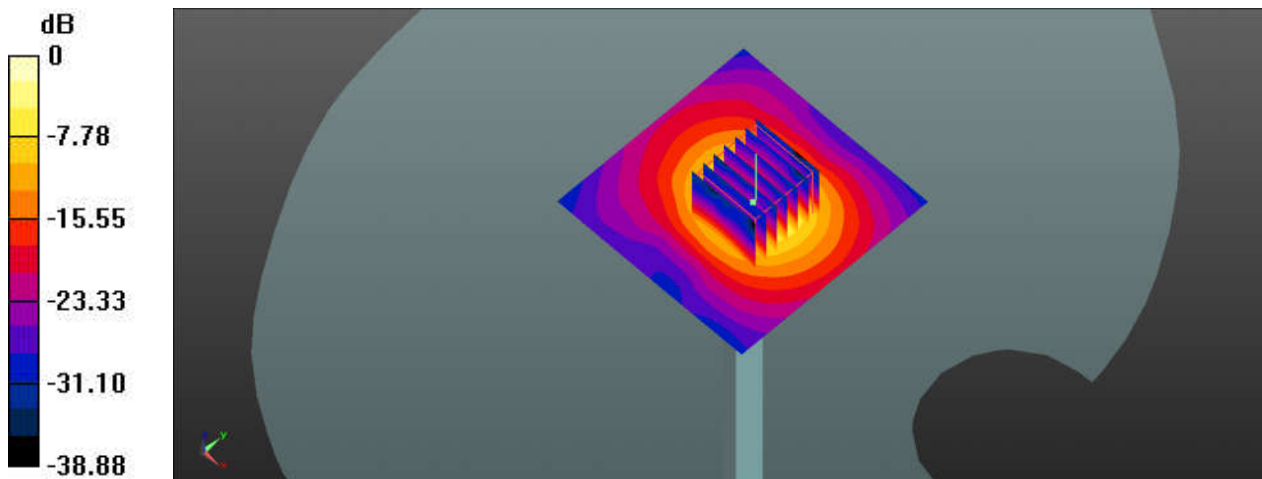
Communication System: UID 0, CW (0); Frequency: 5750 MHz;Duty Cycle: 1:1
Medium: HSL_5750_230330 Medium parameters used: $f = 5750$ MHz; $\sigma = 5.385$ S/m; $\epsilon_r = 35.954$;
 $\rho = 1000$ kg/m³
Ambient Temperature : 23.4 °C ; Liquid Temperature : 22.5 °C

DASY5 Configuration:

- Probe: EX3DV4 - SN7576; ConvF(4.88, 4.88, 4.88); Calibrated: 2022/7/28
- Sensor-Surface: 1.4mm (Mechanical Surface Detection)
- Electronics: DAE4 Sn1664; Calibrated: 2022/5/30
- Phantom: SAM with CRP v5.0(Front); Type: QD000P40CD; Serial: 1671
- Measurement SW: DASY52, Version 52.10 (3); SEMCAD X Version 14.6.13 (7474)

Pin=100mW/Area Scan (71x71x1): Interpolated grid: dx=1.000 mm, dy=1.000 mm
Maximum value of SAR (interpolated) = 13.8 W/kg

Pin=100mW/Zoom Scan (7x7x7)/Cube 0: Measurement grid: dx=4mm, dy=4mm, dz=1.4mm
Reference Value = 44.31 V/m; Power Drift = -0.18 dB
Peak SAR (extrapolated) = 28.6 W/kg
SAR(1 g) = 7.46 W/kg; SAR(10 g) = 2.09 W/kg
Maximum value of SAR (measured) = 14.1 W/kg



0 dB = 14.1 W/kg

System Check_5750MHz

DUT: D5GHzV2-SN:1341

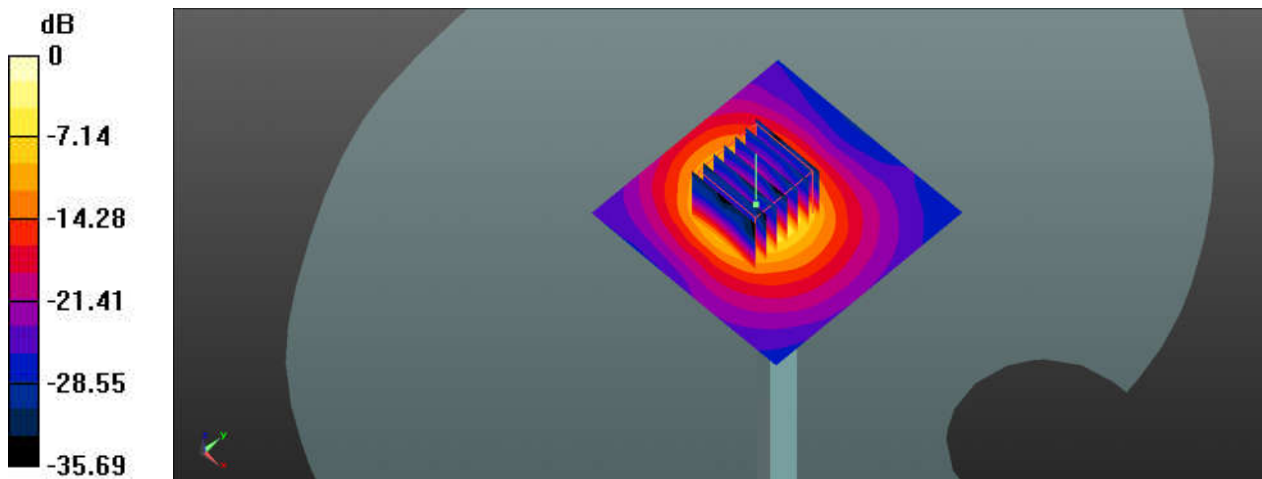
Communication System: UID 0, CW (0); Frequency: 5750 MHz;Duty Cycle: 1:1
Medium: HSL_5750_230401 Medium parameters used: $f = 5750$ MHz; $\sigma = 5.029$ S/m; $\epsilon_r = 35.671$;
 $\rho = 1000$ kg/m³
Ambient Temperature : 23.3 °C; Liquid Temperature : 22.5 °C

DASY5 Configuration:

- Probe: EX3DV4 - SN7576; ConvF(4.88, 4.88, 4.88); Calibrated: 2022/7/28
- Sensor-Surface: 1.4mm (Mechanical Surface Detection)
- Electronics: DAE4 Sn1664; Calibrated: 2022/5/30
- Phantom: SAM with CRP v5.0(Front); Type: QD000P40CD; Serial: 1671
- Measurement SW: DASY52, Version 52.10 (3); SEMCAD X Version 14.6.13 (7474)

Pin=100mW/Area Scan (71x71x1): Interpolated grid: dx=1.000 mm, dy=1.000 mm
Maximum value of SAR (interpolated) = 15.9 W/kg

Pin=100mW/Zoom Scan (7x7x7)/Cube 0: Measurement grid: dx=4mm, dy=4mm, dz=1.4mm
Reference Value = 34.55 V/m; Power Drift = 0.08 dB
Peak SAR (extrapolated) = 25.6 W/kg
SAR(1 g) = 7.56 W/kg; SAR(10 g) = 2.13 W/kg
Maximum value of SAR (measured) = 15.3 W/kg



0 dB = 15.3 W/kg