

FCC WiFi 6E RF Exposure

Applicant : ASUSTeK COMPUTER INC.
Equipment : ASUS Phone(Mobile Phone)
Brand Name : ASUS
Model Name : ASUS_AI2201_F, ASUS_AI2201_D
FCC ID : MSQAI2201
Standard : FCC 47 CFR Part 2 (2.1093)

We, Sporton International Inc. (Shenzhen), would like to declare that the tested sample has been evaluated in accordance with the test procedures given in 47 CFR Part 2.1093 and FCC KDB and has been in compliance with the applicable technical standards.

The test results in this report apply exclusively to the tested model / sample. Without written approval of Sporton International Inc. (Shenzhen), the test report shall not be reproduced except in full.



Approved by: Si Zhang

Sporton International Inc. (Shenzhen)

1/F, 2/F, Bldg 5, Shiling Industrial Zone, Xinwei Village, Xili, Nanshan, Shenzhen, 518055
People's Republic of China



Table of Contents

- 1. Statement of Compliance 4
- 2. Administration Data 5
- 3. Guidance Applied..... 6
- 4. Equipment Under Test (EUT) Information 7
 - 4.1 General Information 7
 - 4.2 Operating Mode for WLAN 8
- 5. RF Exposure Limits..... 9
 - 5.1 Uncontrolled Environment..... 9
 - 5.2 Controlled Environment..... 9
 - 5.3 RF Exposure limit for below 6GHz 9
 - 5.4 RF Exposure limit for above 6GHz.....10
- 6. System Description and Setup11
- 7. Test Equipment List12
- 8. SAR System Verification13
 - 8.1 SAR Tissue Verification13
 - 8.2 SAR System Performance Check Results13
 - 8.3 PD System Verification Results.....14
- 9. RF Exposure Positions15
 - 9.1 Ear and handset reference point15
 - 9.2 Definition of the cheek position16
 - 9.3 Definition of the tilt position17
 - 9.4 Body Worn Accessory18
 - 9.5 Product Specific/Extremity Exposure18
 - 9.6 Miscellaneous Testing Considerations.....18
- 10. WiFi 6E Output Power (Unit: dBm)19
- 11. Antenna Location20
- 12. RF Exposure Test Results21
 - 12.1 Head SAR Test Result22
 - 12.2 Body Worn SAR Test Result23
 - 12.3 Product Specific SAR Test Result.....24
 - 12.4 PD Test Result25
- 13. Uncertainty Assessment26
- 14. References29
- Appendix A. Plots of System Performance Check
- Appendix B. Plots of High SAR Measurement
- Appendix C. DASY Calibration Certificate
- Appendix D. Test Setup Photos
- Appendix E. Conducted RF Output Power Table



History of this test report

| Report No. | Version | Description | Issued Date |
|------------|---------|-------------------------|---------------|
| FA230112A | 01 | Initial issue of report | Jul. 29, 2022 |
| | | | |
| | | | |
| | | | |
| | | | |
| | | | |
| | | | |
| | | | |
| | | | |
| | | | |
| | | | |
| | | | |
| | | | |
| | | | |
| | | | |
| | | | |
| | | | |



1. Statement of Compliance

The maximum results of Specific Absorption Rate (SAR) found during testing for **ASUSTeK COMPUTER INC., ASUS Phone(Mobile Phone), ASUS_AI2201_F, ASUS_AI2201_D**, are as follows.

| Band | Tx Frequency (MHz) | Reported SAR | | | APD | | | Scaled PD |
|------------------|--------------------|-----------------------|-------------------------|------------------------|--------------------------|-------------------------------|-----------------------------|--------------------------|
| | | Head (1g SAR W/kg) | Body Worn (1g SAR W/kg) | Phablet (10g SAR W/kg) | Head (W/m ²) | Body Worn (W/m ²) | Phablet (W/m ²) | psPD (W/m ²) |
| WIFI6E | 5925-7125 | 0.77 | 0.10 | 0.94 | 5.11 | 0.67 | 13.50 | 7.95 |
| Date of Testing: | | 2022/6/28 ~ 2022/7/16 | | | | | | |

| |
|--|
| Declaration of Conformity: |
| The test results with all measurement uncertainty excluded are presented in accordance with the regulation limits or requirements declared by manufacturers. |
| Comments and Explanations: |
| The declared of product specification for EUT presented in the report are provided by the manufacturer, and the manufacturer takes all the responsibilities for the accuracy of product specification. |

This device is in compliance with Specific Absorption Rate (SAR) for general population/uncontrolled exposure limits (1.6 W/kg for Partial-Body 1g SAR, 4.0 W/kg for Product Specific 10g SAR) and Power density exposure limits (1 mW/cm²) specified in FCC 47 CFR part 2 (2.1093), ANSI/IEEE C95.1-1992 and FCC 47 CFR Part1.1310, and had been tested in accordance with the measurement methods and procedures specified in IEEE 1528-2013 and FCC KDB publications.

2. Administration Data

Sporton International Inc. (Shenzhen) is accredited to ISO/IEC 17025:2017 by American Association for Laboratory Accreditation with Certificate Number 5145.01.

| Testing Laboratory | | | |
|---------------------------|--|----------------------------|---------------------------------------|
| Test Firm | Sporton International Inc. (Shenzhen) | | |
| Test Site Location | 1/F, 2/F, Bldg 5, Shiling Industrial Zone, Xinwei Village, Xili, Nanshan, Shenzhen, 518055 People's Republic of China TEL: +86-755-86379589 FAX: +86-755-86379595 | | |
| Test Site No. | Sporton Site No. | FCC Designation No. | FCC Test Firm Registration No. |
| | SAR03-SZ | CN1256 | 421272 |

| Applicant | |
|---------------------|--|
| Company Name | ASUSTeK COMPUTER INC. |
| Address | 1F., No. 15, Lide Rd., Beitou Dist., Taipei City 112, Taiwan |

| Manufacturer | |
|---------------------|--|
| Company Name | ASUSTeK COMPUTER INC. |
| Address | 1F., No. 15, Lide Rd., Beitou Dist., Taipei City 112, Taiwan |



3. Guidance Applied

The Specific Absorption Rate (SAR) testing specification, method, and procedure for this device is in accordance with the following standards.

- FCC 47 CFR Part 2 (2.1093)
- ANSI/IEEE C95.1-1992
- IEEE 1528-2013
- IEC/IEEE 62209-1528:2020
- SPEAG DASY6 System Handbook
- SPEAG DASY6 Application Note (Interim Procedure for Device Operation at 6GHz-10GHz)
- IEC TR 63170:2018
- IEC 62479:2010
- FCC KDB 865664 D01 SAR Measurement 100 MHz to 6 GHz v01r04
- FCC KDB 865664 D02 SAR Reporting v01r02
- FCC KDB 447498 D04 Interim General RF Exposure Guidance v01
- FCC KDB 648474 D04 SAR Evaluation Considerations for Wireless Handsets v01r03
- FCC KDB 248227 D01 802.11 Wi-Fi SAR v02r02



4. Equipment Under Test (EUT) Information

4.1 General Information

| Product Feature & Specification | |
|---|---|
| Equipment Name | ASUS Phone(Mobile Phone) |
| Brand Name | ASUS |
| Model Name | ASUS_AI2201_F, ASUS_AI2201_D |
| FCC ID | MSQAI2201 |
| IMEI Code | SIM 1: 353700810104537 SIM 2: 353700810104545 |
| Wireless Technology and Frequency Range | GSM850: 824 MHz ~ 849 MHz GSM1900: 1850 MHz ~ 1910 MHz WCDMA Band II: 1850 MHz ~ 1910 MHz WCDMA Band IV: 1710 MHz ~ 1755 MHz WCDMA Band V: 824 MHz ~ 849 MHz LTE Band 2: 1850 MHz ~ 1910 MHz LTE Band 4: 1710 MHz ~ 1755 MHz LTE Band 5: 824 MHz ~ 849 MHz LTE Band 7: 2500 MHz ~ 2570 MHz LTE Band 12: 699 MHz ~ 716 MHz LTE Band 13: 777 MHz ~ 787 MHz LTE Band 17: 704 MHz ~ 716 MHz LTE Band 25: 1850 MHz ~ 1915 MHz LTE Band 26: 814 MHz ~ 849 MHz LTE Band 30: 2305 MHz ~ 2315 MHz LTE Band 38: 2570 MHz ~ 2620 MHz LTE Band 41: 2496 MHz ~ 2690 MHz LTE Band 48: 3550 MHz ~ 3700 MHz LTE Band 66: 1710 MHz ~ 1780 MHz LTE Band 71: 663 MHz ~ 698 MHz 5G NR n2 : 1850 MHz ~ 1910 MHz 5G NR n5: 824 MHz ~ 849 MHz 5G NR n7: 2500 MHz ~ 2570 MHz 5G NR n12 : 699 MHz ~ 716 MHz 5G NR n13 : 777 MHz ~ 787 MHz 5G NR n25 : 1850 MHz ~ 1915 MHz 5G NR n26 : 814 MHz ~ 849 MHz 5G NR n38 : 2570 MHz ~ 2620 MHz 5G NR n41 : 2496 MHz ~ 2690 MHz 5G NR n48 : 3550 MHz ~ 3700 MHz 5G NR n66 :1710 MHz ~ 1780 MHz 5G NR n71 : 663 MHz ~ 698 MHz 5G NR n77: 3700 MHz ~ 3980 MHz 5G NR n78: 3700 MHz ~ 3800 MHz WLAN 2.4GHz Band: 2412 MHz ~ 2462 MHz WLAN 5.2GHz Band: 5180 MHz ~ 5240 MHz WLAN 5.3GHz Band: 5260 MHz ~ 5320 MHz WLAN 5.5GHz Band: 5500 MHz ~ 5700 MHz WLAN 5.8GHz Band: 5745 MHz ~ 5825 MHz WLAN 6E U-NII-5: 5925 MHz ~ 6425 MHz WLAN 6E U-NII-6: 6425 MHz ~ 6525 MHz WLAN 6E U-NII-7: 6525 MHz ~ 6875 MHz WLAN 6E U-NII-8: 6875 MHz ~ 7125 MHz Bluetooth: 2402 MHz ~ 2480 MHz NFC: 13.56 MHz |
| Mode | GSM/GPRS/EGPRS RMC/AMR 12.2Kbps HSDPA HSUPA DC-HSDPA HSPA+(16QAM uplink is not supported) |

| | |
|--|---|
| | LTE: QPSK, 16QAM, 64QAM, 256QAM 5G NR : CP-OFDM / DFT-s-OFDM, PI/2 BPSK, QPSK, 16QAM, 64QAM, 256QAM WLAN 2.4GHz 802.11b/g/n HT20/HT40 WLAN 2.4GHz 802.11ac/ax VHT20/VHT40/HE20/HE40 WLAN 5GHz 802.11a/n HT20/HT40 WLAN 5GHz 802.11ac/ax VHT20/VHT40/VHT80/VHT160/HE20/HE40/HE80/HE160 WLAN 6GHz 802.11a/n HT20/HT40 WLAN 6GHz 802.11ac/ax VHT20/VHT40/VHT80/VHT160/HE20/HE40/HE80/HE160 Bluetooth BR/EDR/LE NFC: ASK |
| HW Version | R3.0 |
| SW Version | Android 12 |
| GSM / (E)GPRS Transfer mode | Class B – EUT cannot support Packet Switched and Circuit Switched Network simultaneously but can automatically switch between Packet and Circuit Switched Network. |
| EUT Stage | Identical Prototype |
| Remark: | |
| 1. The 2.4GHz/5GHz/6GHz WLAN can transmit in SISO and MIMO antenna mode. 2. WIFI 6E has no hotspot function. 3. There are two samples. The different between them refer to the ASUS_AI2201_F, ASUS_AI2201_D_Operational Description of Product Equality Declaration which is exhibit separately. According to the differences, we choose sample 1 to perform full SAR testing and sample 2 to verify the worst case of sample 1. | |

4.2 Operating Mode for WLAN

General Note:

- In order to get better user experience, the device implemented the dynamic antenna swapping which based on specific user interaction for WLAN bands.
- The device has two using scenarios state, one is Normal Mode and the other is Camera Mode. Each mode will be triggered by different detection mechanism to realize the location exchanged by the antenna in different modes.
- For normal mode, when the device detect audio receiver is active, the antenna for Chain1 is adapted on Ant4. For camera mode, when the device detect camera is active, the antenna for Chain1 is adapted on Ant6. Below table will summary of the relationship between mode, antenna location and detection mechanism.

| Mode | Antenna | Detection mechanism |
|-------------|--|---|
| Normal Mode | Chain0 is adapted on Ant5 Chain1 is adapted on Ant4 | Default setting and the device audio receiver is active |
| Camera Mode | Chain0 is adapted on Ant5 Chain1 is adapted on Ant6 | When the device Camera is active |

For SAR report, the test mode mentioned as following table.

| Bands | Head SAR | Body-worn SAR | Extremity SAR |
|---------|-------------|----------------------------|----------------------------|
| WLAN/BT | Normal Mode | Normal Mode Camera Mode | Normal Mode Camera Mode |

5. RF Exposure Limits

5.1 Uncontrolled Environment

Uncontrolled Environments are defined as locations where there is the exposure of individuals who have no knowledge or control of their exposure. The general population/uncontrolled exposure limits are applicable to situations in which the general public may be exposed or in which persons who are exposed as a consequence of their employment may not be made fully aware of the potential for exposure or cannot exercise control over their exposure. Members of the general public would come under this category when exposure is not employment-related; for example, in the case of a wireless transmitter that exposes persons in its vicinity.

5.2 Controlled Environment

Controlled Environments are defined as locations where there is exposure that may be incurred by persons who are aware of the potential for exposure, (i.e. as a result of employment or occupation). In general, occupational/controlled exposure limits are applicable to situations in which persons are exposed as a consequence of their employment, who have been made fully aware of the potential for exposure and can exercise control over their exposure. The exposure category is also applicable when the exposure is of a transient nature due to incidental passage through a location where the exposure levels may be higher than the general population/uncontrolled limits, but the exposed person is fully aware of the potential for exposure and can exercise control over his or her exposure by leaving the area or by some other appropriate means.

5.3 RF Exposure limit for below 6GHz

Limits for Occupational/Controlled Exposure (W/kg)

| Whole-Body | Partial-Body | Hands, Wrists, Feet and Ankles |
|------------|--------------|--------------------------------|
| 0.4 | 8.0 | 20.0 |

Limits for General Population/Uncontrolled Exposure (W/kg)

| Whole-Body | Partial-Body | Hands, Wrists, Feet and Ankles |
|------------|--------------|--------------------------------|
| 0.08 | 1.6 | 4.0 |

1. Whole-Body SAR is averaged over the entire body, partial-body SAR is averaged over any 1gram of tissue defined as a tissue volume in the shape of a cube. SAR for hands, wrists, feet and ankles is averaged over any 10 grams of tissue defined as a tissue volume in the shape of a cube.



5.4 RF Exposure limit for above 6GHz

According to ANSI/IEEE C95.1-1992, the criteria listed in Table 1 shall be used to evaluate the environmental impact of human exposure to radio frequency (RF) radiation as specified in §1.1310. Power density evaluations in units of W/m² or mW/cm².

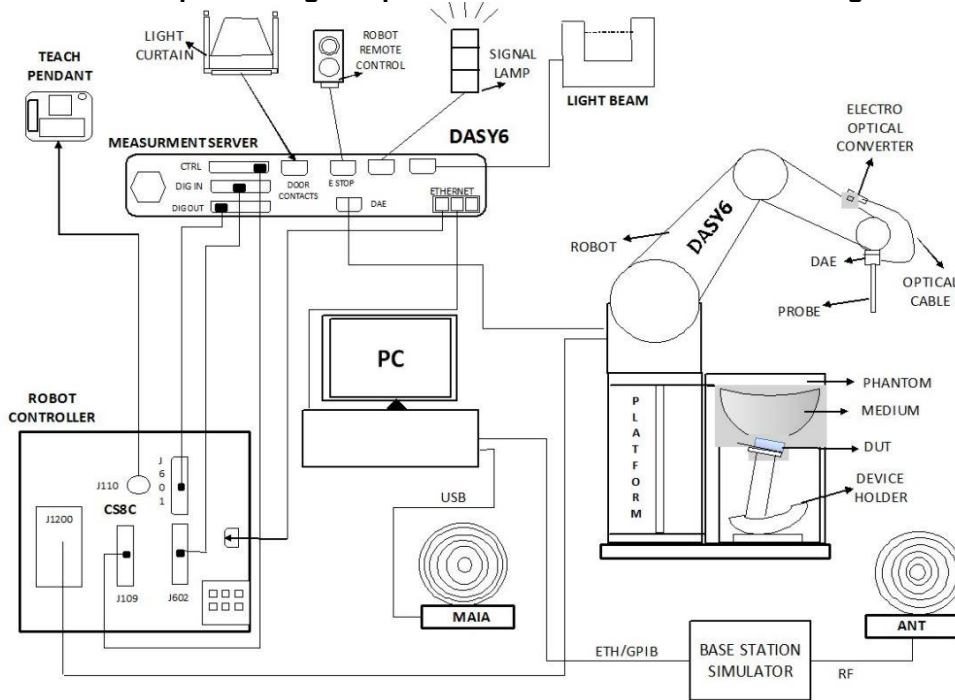
Peak Spatially Averaged Power Density was evaluated over a circular area of 4cm² per interim FCC Guidance for near-field power density evaluations per October 2018 TCB Workshop notes

Table with 5 columns: Frequency range (MHz), Electric field strength (V/m), Magnetic field strength (A/m), Power density (mW/cm²), Averaging time (minutes). It is divided into two sections: (A) Limits for Occupational/Controlled Exposures and (B) Limits for General Population/Uncontrolled Exposure.

Note: 1.0 mW/cm² is 10 W/m²

6. System Description and Setup

The DASY system used for performing compliance tests consists of the following items:



- A standard high precision 6-axis robot with controller, teach pendant and software. An arm extension for accommodating the data acquisition electronics (DAE).
- An isotropic Field probe optimized and calibrated for the targeted measurement.
- A data acquisition electronics (DAE) which performs the signal amplification, signal multiplexing, AD-conversion, offset measurements, mechanical surface detection, collision detection, etc. The unit is battery powered with standard or rechargeable batteries. The signal is optically transmitted to the EOC.
- The Electro-optical converter (EOC) performs the conversion from optical to electrical signals for the digital communication to the DAE. To use optical surface detection, a special version of the EOC is required. The EOC signal is transmitted to the measurement server.
- The function of the measurement server is to perform the time critical tasks such as signal filtering, control of the robot operation and fast movement interrupts.
- The Light Beam used is for probe alignment. This improves the (absolute) accuracy of the probe positioning.
- A computer running Windows 10 and the DASY6 software.
- Remote control and teach pendant as well as additional circuitry for robot safety such as warning lamps, etc.
- The phantom, the device holder and other accessories according to the targeted measurement.



7. Test Equipment List

| Manufacturer | Name of Equipment | Type/Model | Serial Number | Calibration | |
|---------------|-------------------------------|----------------|---------------|---------------|---------------|
| | | | | Last Cal. | Due Date |
| SPEAG | 6500MHz System Validation Kit | D6.5GHzV2 | 1026 | Jan. 29, 2021 | Jan. 28, 2024 |
| SPEAG | 5G Verification Source | 10GHz | 2002 | Nov. 26, 2021 | Nov. 25, 2022 |
| SPEAG | Data Acquisition Electronics | DAE4 | 1210 | Apr. 12, 2022 | Apr. 11, 2023 |
| SPEAG | Dosimetric E-Field Probe | EX3DV4 | 7346 | Mar. 30, 2022 | Mar. 29, 2023 |
| SPEAG | EUmmWV Probe Tip Protection | EUmmWV3 | 9432 | Nov. 29, 2021 | Nov. 28, 2022 |
| SPEAG | SAM Twin Phantom | QD 000 P40 CD | 1670 | NCR | NCR |
| Agilent | Network Analyzer | E5071C | MY46523671 | Oct. 15, 2020 | Oct. 14, 2021 |
| Speag | Dielectric Assessment KIT | DAK-3.5 | 1071 | Jan. 24, 2022 | Jan. 23, 2023 |
| R&S | Spectrum Analyzer | FSV40 | 101041 | Oct. 25, 2021 | Oct. 24, 2022 |
| Anymetre | Thermo-Hygrometer | JR593 | 2015030904 | Jul. 17, 2021 | Jul. 16, 2022 |
| R&S | Signal Generator | SMB100A | 175779 | Dec. 27, 2021 | Dec. 26, 2022 |
| mini-circuits | Amplifier | ZVE-3W-83+ | 599201528 | Apr. 07, 2022 | Apr. 06, 2023 |
| Anritsu | Power Sensor | MA2411B | 1306099 | Sep. 29, 2021 | Sep. 28, 2022 |
| Anritsu | Power Meter | ML2495A | 1349001 | Sep. 29, 2021 | Sep. 28, 2022 |
| Anritsu | Power Sensor | MA2411B | 1542004 | Dec. 28, 2021 | Dec. 27, 2022 |
| Anritsu | Power Meter | ML2495A | 1339473 | Dec. 28, 2021 | Dec. 27, 2022 |
| R&S | Power Sensor | NRP50S | 101254 | Apr. 07, 2022 | Apr. 06, 2023 |
| SPEAG | Device Holder | N/A | N/A | N/A | N/A |
| Weinschel | Attenuator 2 | 3M-20 | N/A | Note 1 | |
| ET Industries | Dual Directional Coupler | C-058-10 | N/A | Note 1 | |
| ATM | Dual Directional Coupler | C122H-10 | P610410z-02 | Note 1 | |
| Warison | Directional Coupler | WCOU-10-50S-10 | WR889BMC4BMC1 | Note 1 | |

General Note:

1. Prior to system verification and validation, the path loss from the signal generator to the system check source and the power meter, which includes the amplifier, cable, attenuator and directional coupler, was measured by the network analyzer. The reading of the power meter was offset by the path loss difference between the path to the power meter and the path to the system check source to monitor the actual power level fed to the system check source.
2. The dipole calibration interval can be extended to 3 years with justification according to KDB 865664 D01. The dipoles are also not physically damaged, or repaired during the interval. The justification data in appendix C can be found which the return loss is < -20dB, within 20% of prior calibration, the impedance is within 5 ohm of prior calibration for each dipole.

8. SAR System Verification

8.1 SAR Tissue Verification

The tissue dielectric parameters of tissue-equivalent media used for SAR measurements must be characterized within a temperature range of 18°C to 25°C, measured with calibrated instruments and apparatuses, such as network analyzers and temperature probes. The temperature of the tissue-equivalent medium during SAR measurement must also be within 18°C to 25°C and within $\pm 2^\circ\text{C}$ of the temperature when the tissue parameters are characterized. The tissue dielectric measurement system must be calibrated before use. The dielectric parameters must be measured before the tissue-equivalent medium is used in a series of SAR measurements.

The liquid tissue depth was at least 15cm in the phantom for all SAR testing

<Tissue Dielectric Parameter Check Results>

| Frequency (MHz) | Tissue Type | Liquid Temp. (°C) | Conductivity (σ) | Permittivity (ϵ_r) | Conductivity Target (σ) | Permittivity Target (ϵ_r) | Delta (σ) (%) | Delta (ϵ_r) (%) | Limit (%) | Date |
|-----------------|-------------|-------------------|---------------------------|-------------------------------|----------------------------------|--------------------------------------|------------------------|----------------------------|-----------|-----------|
| 6500 | Head | 22.5 | 6.080 | 34.000 | 6.07 | 34.50 | 0.16 | -1.45 | ± 5 | 2022/6/28 |

8.2 SAR System Performance Check Results

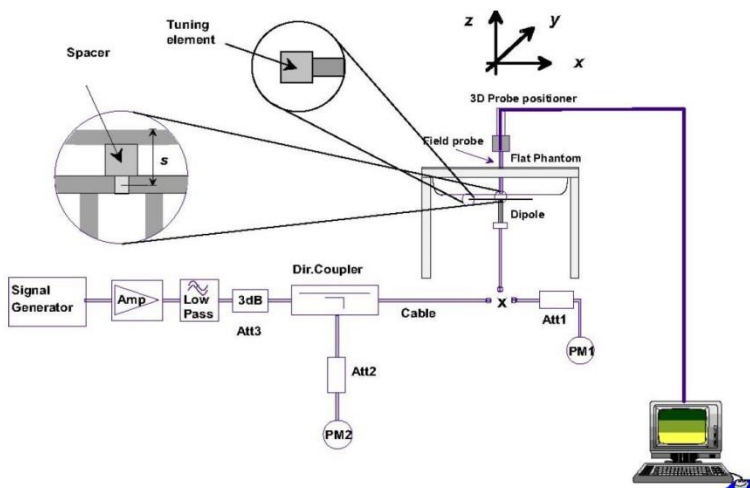
Comparing to the original SAR value provided by SPEAG, the verification data should be within its specification of 10 %. Below table shows the target SAR and measured SAR after normalized to 1W input power. The table below indicates the system performance check can meet the variation criterion and the plots can be referred to Appendix A of this report.

<1g SAR>

| Date | Frequency (MHz) | Input Power (mW) | Dipole S/N | Probe S/N | DAE S/N | Measured 1g SAR (W/kg) | Targeted 1g SAR (W/kg) | Normalized 1g SAR (W/kg) | Deviation (%) |
|-----------|-----------------|------------------|------------|-----------|---------|------------------------|------------------------|--------------------------|---------------|
| 2022/6/28 | 6500 | 100 | 1026 | 7346 | 1210 | 27.10 | 290.00 | 271.00 | -6.55 |

<10g SAR>

| Date | Frequency (MHz) | Input Power (mW) | Dipole S/N | Probe S/N | DAE S/N | Measured 10g SAR (W/kg) | Targeted 10g SAR (W/kg) | Normalized 10g SAR (W/kg) | Deviation (%) |
|-----------|-----------------|------------------|------------|-----------|---------|-------------------------|-------------------------|---------------------------|---------------|
| 2022/6/28 | 6500 | 100 | 1026 | 7346 | 1210 | 4.880 | 53.40 | 48.8 | -8.61 |



System Performance Check Setup

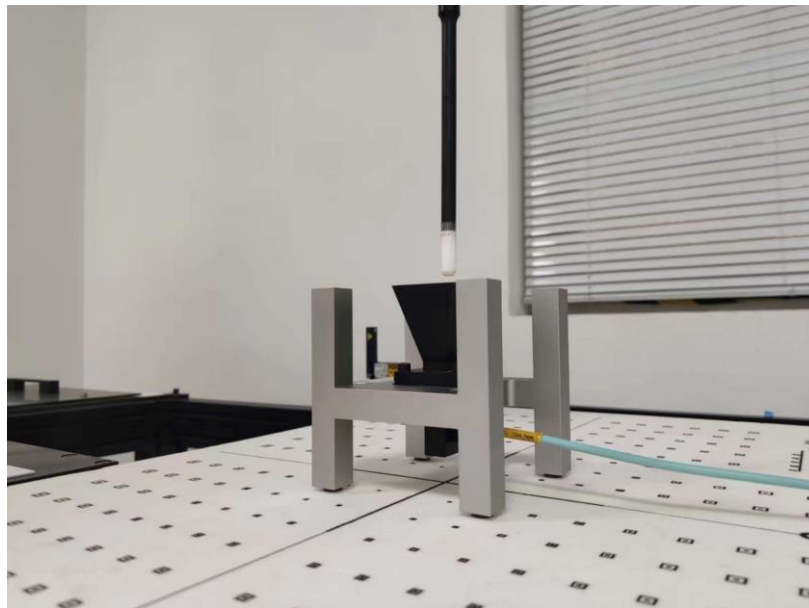


Setup Photo

8.3 PD System Verification Results

The system was verified to be within ± 0.66 dB of the power density targets on the calibration certificate according to the test system specification in the user’s manual and calibration facility recommendation. The 0.66 dB deviation threshold represents the expanded uncertainty for system performance checks using SPEAG’s mmWave verification sources. The same spatial resolution and measurement region used in the source calibration was applied during the system check. The measured power density distribution of verification source was also confirmed through visual inspection to have no noticeable differences, both spatially (shape) and numerically (level) from the distribution provided by the manufacturer, per November 2017 TCBC Workshop Notes.

| Frequency (GHz) | 5G Verification Source | Probe S/N | DAE S/N | Distance (mm) | Prad (mW) | Measured 4 cm ² (W/m ²) | Targeted 4 cm ² (W/m ²) | Deviation (dB) | Date |
|-----------------|------------------------|-----------|---------|---------------|-----------|--|--|----------------|-----------|
| 10G | 10GHz_2002 | 9432 | 1210 | 10 | 125 | 165 | 151 | 0.39 | 2022/7/15 |



System Verification Setup Photo

9. RF Exposure Positions

9.1 Ear and handset reference point

Figure 9.1.1 shows the front, back, and side views of the SAM phantom. The center-of-mouth reference point is labeled “M,” the left ear reference point (ERP) is marked “LE,” and the right ERP is marked “RE.” Each ERP is 15 mm along the B-M (back-mouth) line behind the entrance-to-ear-canal (EEC) point, as shown in Figure 9.1.2 The Reference Plane is defined as passing through the two ear reference points and point M. The line N-F (neck-front), also called the reference pivoting line, is normal to the Reference Plane and perpendicular to both a line passing through RE and LE and the B-M line (see Figure 9.1.3). Both N-F and B-M lines should be marked on the exterior of the phantom shell to facilitate handset positioning. Posterior to the N-F line the ear shape is a flat surface with 6 mm thickness at each ERP, and forward of the N-F line the ear is truncated, as illustrated in Figure 9.1.2. The ear truncation is introduced to preclude the ear lobe from interfering with handset tilt, which could lead to unstable positioning at the cheek.

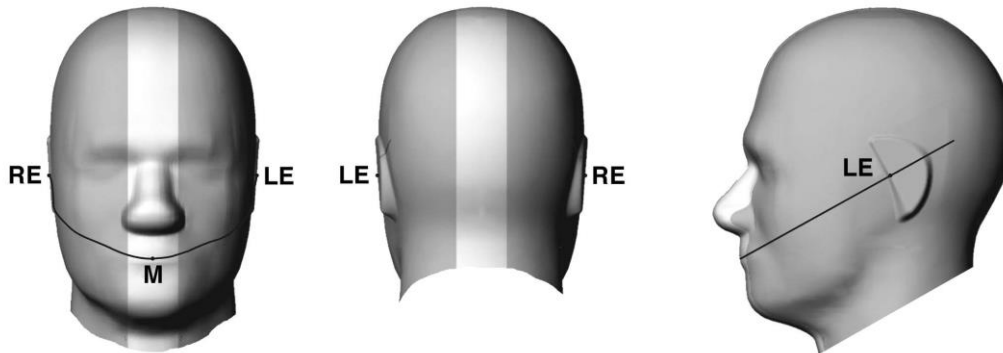


Fig 9.1.1 Front, back, and side views of SAM twin phantom

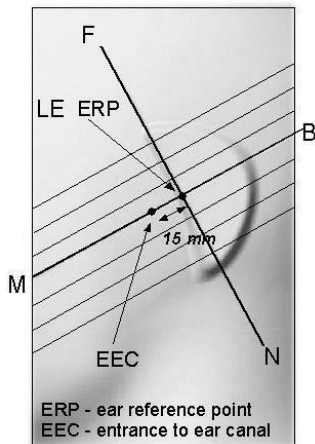


Fig 9.1.2 Close-up side view of phantom showing the ear region.

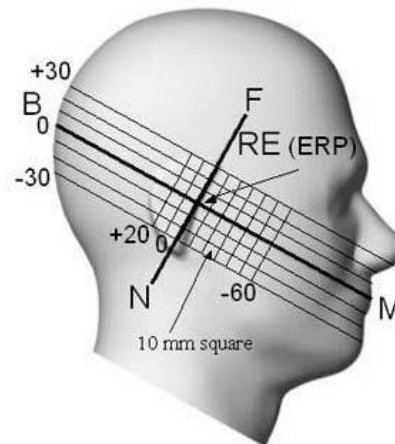


Fig 9.1.3 Side view of the phantom showing relevant markings and seven cross-sectional plane locations

9.2 Definition of the cheek position

1. Ready the handset for talk operation, if necessary. For example, for handsets with a cover piece (flip cover), open the cover. If the handset can transmit with the cover closed, both configurations must be tested.
2. Define two imaginary lines on the handset—the vertical centerline and the horizontal line. The vertical centerline passes through two points on the front side of the handset—the midpoint of the width w_t of the handset at the level of the acoustic output (point A in Figure 9.2.1 and Figure 9.2.2), and the midpoint of the width w_b of the bottom of the handset (point B). The horizontal line is perpendicular to the vertical centerline and passes through the center of the acoustic output (see Figure 9.2.1). The two lines intersect at point A. Note that for many handsets, point A coincides with the center of the acoustic output; however, the acoustic output may be located elsewhere on the horizontal line. Also note that the vertical centerline is not necessarily parallel to the front face of the handset (see Figure 9.2.2), especially for clamshell handsets, handsets with flip covers, and other irregularly-shaped handsets.
3. Position the handset close to the surface of the phantom such that point A is on the (virtual) extension of the line passing through points RE and LE on the phantom (see Figure 9.2.3), such that the plane defined by the vertical centerline and the horizontal line of the handset is approximately parallel to the sagittal plane of the phantom.
4. Translate the handset towards the phantom along the line passing through RE and LE until handset point A touches the pinna at the ERP.
5. While maintaining the handset in this plane, rotate it around the LE-RE line until the vertical centerline is in the plane normal to the plane containing B-M and N-F lines, i.e., the Reference Plane.
6. Rotate the handset around the vertical centerline until the handset (horizontal line) is parallel to the N-F line.
7. While maintaining the vertical centerline in the Reference Plane, keeping point A on the line passing through RE and LE, and maintaining the handset contact with the pinna, rotate the handset about the N-F line until any point on the handset is in contact with a phantom point below the pinna on the cheek. See Figure 9.2.3. The actual rotation angles should be documented in the test report.

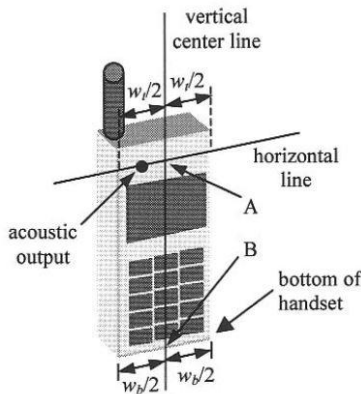


Fig 9.2.1 Handset vertical and horizontal reference lines—“fixed case”

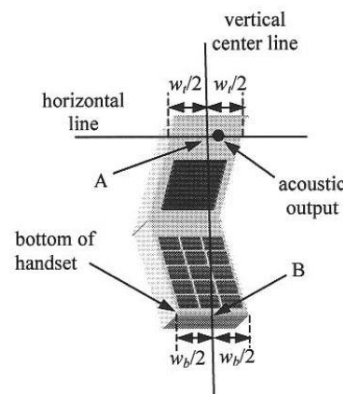


Fig 9.2.2 Handset vertical and horizontal reference lines—“clam-shell case”

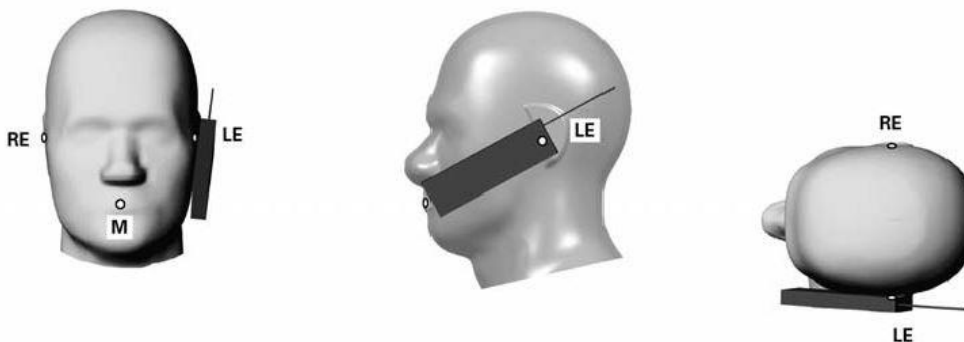


Fig 9.2.3 cheek or touch position. The reference points for the right ear (RE), left ear (LE), and mouth (M), which establish the Reference Plane for handset positioning, are indicated.

9.3 Definition of the tilt position

1. Ready the handset for talk operation, if necessary. For example, for handsets with a cover piece (flip cover), open the cover. If the handset can transmit with the cover closed, both configurations must be tested.
2. While maintaining the orientation of the handset, move the handset away from the pinna along the line passing through RE and LE far enough to allow a rotation of the handset away from the cheek by 15° .
3. Rotate the handset around the horizontal line by 15° .
4. While maintaining the orientation of the handset, move the handset towards the phantom on the line passing through RE and LE until any part of the handset touches the ear. The tilt position is obtained when the contact point is on the pinna. See Figure 9.3.1. If contact occurs at any location other than the pinna, e.g., the antenna at the back of the phantom head, the angle of the handset should be reduced. In this case, the tilt position is obtained if any point on the handset is in contact with the pinna and a second point

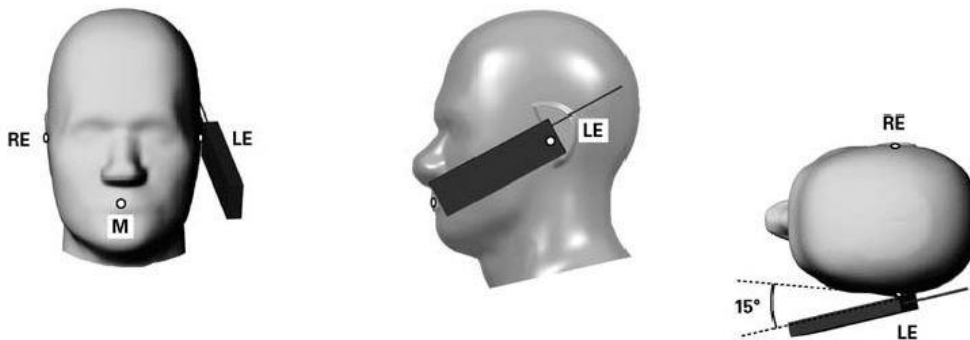


Fig 9.3.1 Tilt position. The reference points for the right ear (RE), left ear (LE), and mouth (M), which define the Reference Plane for handset positioning, are indicated.

9.4 Body Worn Accessory

Body-worn operating configurations are tested with the belt-clips and holsters attached to the device and positioned against a flat phantom in a normal use configuration (see Figure 9.4). Per KDB648474 D04v01r03, body-worn accessory exposure is typically related to voice mode operations when handsets are carried in body-worn accessories. The body-worn accessory procedures in FCC KDB 447498 D04 should be used to test for body-worn accessory SAR compliance, without a headset connected to it. This enables the test results for such configuration to be compatible with that required for hotspot mode when the body-worn accessory test separation distance is greater than or equal to that required for hotspot mode, when applicable. When the reported SAR for body-worn accessory, measured without a headset connected to the handset is > 1.2 W/kg, the highest reported SAR configuration for that wireless mode and frequency band should be repeated for that body-worn accessory with a handset attached to the handset.

Accessories for body-worn operation configurations are divided into two categories: those that do not contain metallic components and those that do contain metallic components and those that do contain metallic components. When multiple accessories that do not contain metallic components are supplied with the device, the device is tested with only the accessory that dictates the closest spacing to the body. Then multiple accessories that contain metallic components are test with the device with each accessory. If multiple accessories share an identical metallic component (i.e. the same metallic belt-chip used with different holsters with no other metallic components) only the accessory that dictates the closest spacing to the body is tested.

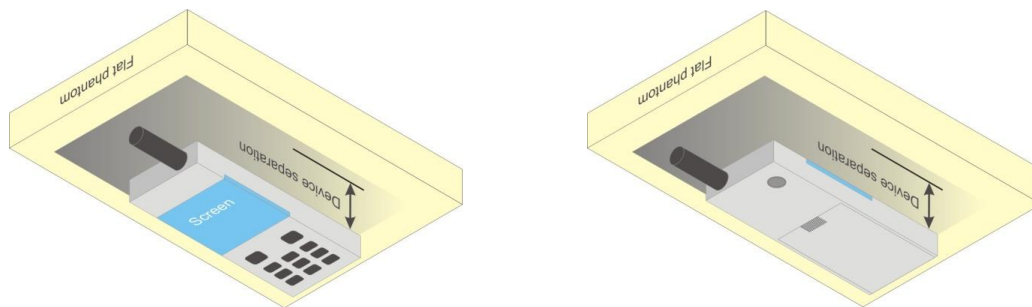


Fig 9.4 Body Worn Position

9.5 Product Specific/Extremity Exposure

For smart phones with a display diagonal dimension > 15.0 cm or an overall diagonal dimension > 16.0 cm that provide similar mobile web access and multimedia support found in mini-tablets or UMPC mini-tablets that support voice calls next to the ear, According to KDB648474 D04v01r03, the following phablet procedures should be applied to evaluate SAR compliance for each applicable wireless mode and frequency band. Devices marketed as phablets, regardless of form factors and operating characteristics must be tested as a phablet to determine SAR compliance

1. The normally required head and body-worn accessory SAR test procedures for handsets, including hotspot mode, must be applied.
2. The UMPC mini-tablet procedures must also be applied to test the SAR of all surfaces and edges with an antenna located at ≤ 25 mm from that surface or edge, in direct contact with a flat phantom, for 10-g extremity SAR according to the equivalent tissue dielectric parameters in KDB 865664 to address interactive hand use exposure conditions. The UMPC mini-tablet 1-g SAR at 5 mm is not required. When hotspot mode applies, 10-g extremity SAR is required only for the surfaces and edges with hotspot mode 1-g reported SAR > 1.2 W/kg.

9.6 Miscellaneous Testing Considerations

- Evaluate SAR using 6-7 GHz parameters per IEC/IEEE 62209-1528:2020.
- Per procedures of KDB Pubs. 447498 and 248227, and applicable product-specific procedures among KDB Pubs. 648474 (handsets/phablets).
- Where supported by the test system, also report estimated absorbed (epithelial) power density (for reference purposes only, not specifically for compliance) and estimated incident PD, derived from measured SAR.
- In addition, for the highest SAR test configurations evaluate incident PD using the mmw near-field probe and total-field/power-density reconstruction method (2 mm closest meas. plane)
 - Adjust measured results per amount that measurement uncertainty exceeds 30 % (see e.g. IEC 62479:2010)



10. WiFi 6E Output Power (Unit: dBm)

The detailed conducted power table can refer to Appendix E.

General Note:

1. When the same maximum power is specified for multiple transmission modes in a frequency band, the largest channel bandwidth, lowest order modulation, lowest data rate and lowest order 802.11a/g/n/ac mode is used for SAR measurement, on the highest measured output power channel for each frequency band.
2. Per 201904 TCBC workshops, General principles of FCC KDB Publication 248227 D01 can be applied to determine the SAR Initial Test Configurations and test reduction for 802.11ax SAR testing. For the table below the 802.11ax maximum power is SU (non-OFDMA), and the SU maximum power also higher than RU (OFDMA)
3. In applying the test guidance, the IEEE 802.11 mode with the maximum output power (out of all modes) should be considered for testing
4. For modes with the same maximum output power, the guidance from section 5.3.2 a) of FCC KDB Publication 248227 D01 should be applied, with 802.11ax being considered as the highest 802.11 mode for the appropriate frequency bands



11. Antenna Location

The detailed antenna location information can refer to SAR Test Setup Photos.



12. RF Exposure Test Results

General Note:

1. Per KDB 447498 D04, the reported SAR is the measured SAR value adjusted for maximum tune-up tolerance.
 - a. Tune-up scaling Factor = tune-up limit power (mW) / EUT RF power (mW), where tune-up limit is the maximum rated power among all production units.
 - b. For SAR testing of WLAN signal with non-100% duty cycle, the measured SAR is scaled-up by the duty cycle scaling factor which is equal to "1/(duty cycle)"
 - c. For WLAN: Reported SAR(W/kg)= Measured SAR(W/kg)* Duty Cycle scaling factor * Tune-up scaling factor
2. Per KDB 447498 D04, for each exposure position, testing of other required channels within the operating mode of a frequency band is not required when the *reported* 1-g or 10-g SAR for the mid-band or highest output power channel is:
 - ≤ 0.8 W/kg or 2.0 W/kg, for 1-g or 10-g respectively, when the transmission band is ≤ 100 MHz
 - ≤ 0.6 W/kg or 1.5 W/kg, for 1-g or 10-g respectively, when the transmission band is between 100 MHz and 200 MHz
 - ≤ 0.4 W/kg or 1.0 W/kg, for 1-g or 10-g respectively, when the transmission band is ≥ 200 MHz
3. Per KDB 865664 D01v01r04, for each frequency band, repeated SAR measurement is required only when the measured SAR is ≥ 0.8 W/kg.
4. Per KDB 648474 D04v01r03, when the reported SAR for a body-worn accessory measured without a headset connected to the handset is ≤ 1.2 W/kg, SAR testing with a headset connected to the handset is not required.
5. Per KDB648474 D04v01r03, this device is considered a phablet since the display diagonal dimension > 15.0 cm or an overall diagonal dimension > 16.0 cm. Therefore, phablet SAR tests are required when wireless mode does not apply or if wireless router 1g SAR > 1.2 W/kg
6. For WIFI6E doesn't support wireless router capability.
7. Per FCC guidance, SAR was performed using 6.5 GHz SAR probe calibration factors.
8. Per October 2020 TCB Workshop Interim procedures, start instead with a minimum of 5 test channels across the full band, then adapt and apply conducted power and SAR test reduction procedures of KDB Pub. 248227 v02r02
9. Absorbed power density (APD) using a 4cm² averaging area is reported based on SAR measurements.
10. Per FCC guidance, the WiFi 6E Sim-Tx analysis are using the SAR results with the conventional SPLSR etc procedures from KDB 447498 D04. And the Sim-Tx analysis result refer to Sporton SAR report no.: FA230112
11. The "Sim Tx" means Simultaneous Transmission in this report.

WLAN SAR Note:

1. When the reported SAR of the test position is > 0.4 W/kg, SAR is repeated for the 802.11 transmission mode configuration tested in the initial test position to measure the subsequent next closet/smallest test separation distance and maximum coupling test position on the highest maximum output power channel, until the report SAR is ≤ 0.8 W/kg or all required test position are tested.
2. For all positions / configurations, when the reported SAR is > 0.8 W/kg, SAR is measured for these test positions / configurations on the subsequent next highest measured output power channel(s) until the reported SAR is ≤ 1.2 W/kg or all required channels are tested.
3. During SAR testing the WIFI6E transmission was verified using a spectrum analyzer.
4. When SAR testing for 802.11ax is required
 - a. If the maximum output power is highest for OFDMA scenarios, choose the tone size with the maximum number of tones and the highest maximum output power
 - b. Otherwise, consider the fully allocated channel for SAR testing
 - c. When SAR testing is required on RU sizes less than the fully allocated channel, use the RU number closest to the middle of the channel, choosing the higher RU number when two RUs are equidistant to the middle of the channel.
5. When the single antenna RF power in MIMO mode is less than the single antenna RF power in SISO mode, SAR testing was performed on SISO mode, for MIMO SAR based on standalone SAR to be summed together as MIMO SAR; when the single antenna RF power in MIMO mode is larger than the single antenna RF power in SISO mode, SAR testing was performed on dual antenna.



12.1 Head SAR Test Result

<WLAN SAR>

| Plot No. | Band | Mode | Test Position | Gap (mm) | Antenna | Power State | Ch. | Freq. (MHz) | Sample | Average Power (dBm) | Tune-Up Limit (dBm) | Tune-up Scaling Factor | Duty Cycle % | Duty Cycle Scaling Factor | Power Drift (dB) | Measured 1g SAR (W/kg) | Reported 1g SAR (W/kg) | Measured APD (W/m^2) |
|----------|----------|---------------------|---------------|----------|---------|----------------|-----|-------------|--------|---------------------|---------------------|------------------------|--------------|---------------------------|------------------|------------------------|------------------------|----------------------|
| | WLAN6GHz | 802.11ax-HE160 MCS0 | Right Cheek | 0mm | Ant 4 | Full Power | 207 | 6985 | 1 | 11.71 | 13.71 | 1.585 | 100 | 1.000 | 0.05 | 0.370 | 0.586 | 2.99 |
| | WLAN6GHz | 802.11ax-HE160 MCS0 | Right Tilted | 0mm | Ant 4 | Full Power | 207 | 6985 | 1 | 11.71 | 13.71 | 1.585 | 100 | 1.000 | 0.12 | 0.329 | 0.521 | 2.65 |
| 01 | WLAN6GHz | 802.11ax-HE160 MCS0 | Left Cheek | 0mm | Ant 4 | Full Power | 207 | 6985 | 1 | 11.71 | 13.71 | 1.585 | 100 | 1.000 | 0.08 | 0.485 | 0.769 | 5.11 |
| | WLAN6GHz | 802.11ax-HE160 MCS0 | Left Cheek | 0mm | Ant 4 | Full Power | 207 | 6985 | 2 | 11.71 | 13.71 | 1.585 | 100 | 1.000 | 0.07 | 0.236 | 0.374 | 2.53 |
| | WLAN6GHz | 802.11ax-HE160 MCS0 | Left Tilted | 0mm | Ant 4 | Full Power | 207 | 6985 | 1 | 11.71 | 13.71 | 1.585 | 100 | 1.000 | 0.11 | 0.470 | 0.745 | 4.04 |
| | WLAN6GHz | 802.11ax-HE160 MCS0 | Left Cheek | 0mm | Ant 4 | Full Power | 15 | 6025 | 1 | 10.18 | 12.18 | 1.585 | 100 | 1.000 | 0.03 | 0.105 | 0.166 | 0.815 |
| | WLAN6GHz | 802.11ax-HE160 MCS0 | Left Cheek | 0mm | Ant 4 | Full Power | 47 | 6185 | 1 | 9.84 | 11.84 | 1.585 | 100 | 1.000 | 0.02 | 0.169 | 0.268 | 1.38 |
| | WLAN6GHz | 802.11ax-HE160 MCS0 | Left Cheek | 0mm | Ant 4 | Full Power | 111 | 6505 | 1 | 11.69 | 13.69 | 1.585 | 100 | 1.000 | -0.1 | 0.294 | 0.466 | 2.32 |
| | WLAN6GHz | 802.11ax-HE160 MCS0 | Left Cheek | 0mm | Ant 4 | Full Power | 175 | 6825 | 1 | 11.63 | 13.63 | 1.585 | 100 | 1.000 | 0.03 | 0.206 | 0.326 | 1.78 |
| | WLAN6GHz | 802.11ax-HE160 MCS0 | Right Cheek | 0mm | Ant 4 | Rec on(Sim TX) | 207 | 6985 | 1 | 11.05 | 13.05 | 1.585 | 100 | 1.000 | -0.06 | 0.200 | 0.317 | 1.73 |
| | WLAN6GHz | 802.11ax-HE160 MCS0 | Right Tilted | 0mm | Ant 4 | Rec on(Sim TX) | 207 | 6985 | 1 | 11.05 | 13.05 | 1.585 | 100 | 1.000 | 0.04 | 0.184 | 0.292 | 1.6 |
| | WLAN6GHz | 802.11ax-HE160 MCS0 | Left Cheek | 0mm | Ant 4 | Rec on(Sim TX) | 207 | 6985 | 1 | 11.05 | 13.05 | 1.585 | 100 | 1.000 | -0.05 | 0.310 | 0.491 | 2.64 |
| | WLAN6GHz | 802.11ax-HE160 MCS0 | Left Tilted | 0mm | Ant 4 | Rec on(Sim TX) | 207 | 6985 | 1 | 11.05 | 13.05 | 1.585 | 100 | 1.000 | 0.15 | 0.236 | 0.374 | 2.01 |
| | WLAN6GHz | 802.11ax-HE160 MCS0 | Right Cheek | 0mm | Ant 5 | Full Power | 207 | 6985 | 1 | 12.46 | 14.46 | 1.585 | 100 | 1.000 | 0.11 | 0.043 | 0.068 | 0.365 |
| | WLAN6GHz | 802.11ax-HE160 MCS0 | Right Tilted | 0mm | Ant 5 | Full Power | 207 | 6985 | 1 | 12.46 | 14.46 | 1.585 | 100 | 1.000 | 0.08 | 0.011 | 0.017 | 0.057 |
| | WLAN6GHz | 802.11ax-HE160 MCS0 | Left Cheek | 0mm | Ant 5 | Full Power | 207 | 6985 | 1 | 12.46 | 14.46 | 1.585 | 100 | 1.000 | -0.05 | 0.024 | 0.038 | 0.107 |
| | WLAN6GHz | 802.11ax-HE160 MCS0 | Left Tilted | 0mm | Ant 5 | Full Power | 207 | 6985 | 1 | 12.46 | 14.46 | 1.585 | 100 | 1.000 | 0.06 | 0.003 | 0.005 | 0.01 |
| | WLAN6GHz | 802.11ax-HE160 MCS0 | Right Cheek | 0mm | Ant 5 | Full Power | 15 | 6025 | 1 | 10.65 | 12.65 | 1.585 | 100 | 1.000 | 0.03 | 0.051 | 0.081 | 0.295 |
| | WLAN6GHz | 802.11ax-HE160 MCS0 | Right Cheek | 0mm | Ant 5 | Full Power | 47 | 6185 | 1 | 10.87 | 12.87 | 1.585 | 100 | 1.000 | 0.02 | 0.072 | 0.114 | 0.369 |
| | WLAN6GHz | 802.11ax-HE160 MCS0 | Right Cheek | 0mm | Ant 5 | Full Power | 111 | 6505 | 1 | 12.44 | 14.44 | 1.585 | 100 | 1.000 | -0.05 | 0.085 | 0.135 | 0.464 |
| | WLAN6GHz | 802.11ax-HE160 MCS0 | Right Cheek | 0mm | Ant 5 | Full Power | 175 | 6825 | 1 | 12.07 | 14.07 | 1.585 | 100 | 1.000 | 0.08 | 0.101 | 0.160 | 0.529 |
| | WLAN6GHz | 802.11ax-HE160 MCS0 | Right Cheek | 0mm | Ant 4+5 | Full Power | 207 | 6985 | 1 | 15.11 | 17.11 | 1.585 | 100 | 1.000 | 0.04 | 0.298 | 0.472 | 2.31 |
| | WLAN6GHz | 802.11ax-HE160 MCS0 | Right Tilted | 0mm | Ant 4+5 | Full Power | 207 | 6985 | 1 | 15.11 | 17.11 | 1.585 | 100 | 1.000 | -0.01 | 0.266 | 0.422 | 2.16 |
| | WLAN6GHz | 802.11ax-HE160 MCS0 | Left Cheek | 0mm | Ant 4+5 | Full Power | 207 | 6985 | 1 | 15.11 | 17.11 | 1.585 | 100 | 1.000 | 0.08 | 0.458 | 0.726 | 4.19 |
| | WLAN6GHz | 802.11ax-HE160 MCS0 | Left Tilted | 0mm | Ant 4+5 | Full Power | 207 | 6985 | 1 | 15.11 | 17.11 | 1.585 | 100 | 1.000 | -0.15 | 0.319 | 0.506 | 3.03 |
| | WLAN6GHz | 802.11ax-HE160 MCS0 | Left Cheek | 0mm | Ant 4+5 | Full Power | 15 | 6025 | 1 | 13.43 | 15.43 | 1.585 | 100 | 1.000 | 0.08 | 0.062 | 0.098 | 0.488 |
| | WLAN6GHz | 802.11ax-HE160 MCS0 | Left Cheek | 0mm | Ant 4+5 | Full Power | 47 | 6185 | 1 | 13.40 | 15.40 | 1.585 | 100 | 1.000 | 0.01 | 0.173 | 0.274 | 1.19 |
| | WLAN6GHz | 802.11ax-HE160 MCS0 | Left Cheek | 0mm | Ant 4+5 | Full Power | 111 | 6505 | 1 | 15.09 | 17.09 | 1.585 | 100 | 1.000 | 0.02 | 0.305 | 0.483 | 2.4 |
| | WLAN6GHz | 802.11ax-HE160 MCS0 | Left Cheek | 0mm | Ant 4+5 | Full Power | 175 | 6825 | 1 | 14.87 | 16.87 | 1.585 | 100 | 1.000 | 0.07 | 0.240 | 0.380 | 1.99 |
| | WLAN6GHz | 802.11ax-HE160 MCS0 | Right Cheek | 0mm | Ant 4+5 | Rec on(Sim TX) | 207 | 6985 | 1 | 14.13 | 16.13 | 1.585 | 100 | 1.000 | -0.13 | 0.179 | 0.284 | 1.59 |
| | WLAN6GHz | 802.11ax-HE160 MCS0 | Right Tilted | 0mm | Ant 4+5 | Rec on(Sim TX) | 207 | 6985 | 1 | 14.13 | 16.13 | 1.585 | 100 | 1.000 | 0.04 | 0.173 | 0.274 | 1.49 |
| | WLAN6GHz | 802.11ax-HE160 MCS0 | Left Cheek | 0mm | Ant 4+5 | Rec on(Sim TX) | 207 | 6985 | 1 | 14.13 | 16.13 | 1.585 | 100 | 1.000 | 0.18 | 0.281 | 0.445 | 2.39 |
| | WLAN6GHz | 802.11ax-HE160 MCS0 | Left Tilted | 0mm | Ant 4+5 | Rec on(Sim TX) | 207 | 6985 | 1 | 14.13 | 16.13 | 1.585 | 100 | 1.000 | 0.02 | 0.214 | 0.339 | 1.81 |



12.2 Body Worn SAR Test Result

<WLAN SAR>

| Plot No. | Band | Mode | Test Position | Gap (mm) | Antenna | Power State | Ch. | Freq. (MHz) | Sample | Average Power (dBm) | Tune-Up Limit (dBm) | Tune-up Scaling Factor | Duty Cycle % | Duty Cycle Scaling Factor | Power Drift (dB) | Measured 1g SAR (W/kg) | Reported 1g SAR (W/kg) | Measured APD (W/m ²) |
|----------|----------|---------------------|---------------|----------|---------|-------------|-----|-------------|--------|---------------------|---------------------|------------------------|--------------|---------------------------|------------------|------------------------|------------------------|----------------------------------|
| 02 | WLAN6GHz | 802.11ax-HE160 MCS0 | Front | 15mm | Ant 4 | Full Power | 207 | 6985 | 1 | 11.71 | 13.71 | 1.585 | 100 | 1.000 | 0 | 0.065 | 0.103 | 0.667 |
| | WLAN6GHz | 802.11ax-HE160 MCS0 | Front | 15mm | Ant 4 | Full Power | 207 | 6985 | 2 | 11.71 | 13.71 | 1.585 | 100 | 1.000 | 0.09 | 0.021 | 0.033 | 0.218 |
| | WLAN6GHz | 802.11ax-HE160 MCS0 | Back | 15mm | Ant 4 | Full Power | 207 | 6985 | 1 | 11.71 | 13.71 | 1.585 | 100 | 1.000 | 0.01 | 0.042 | 0.067 | 0.423 |
| | WLAN6GHz | 802.11ax-HE160 MCS0 | Front | 15mm | Ant 4 | Full Power | 15 | 6025 | 1 | 10.18 | 12.18 | 1.585 | 100 | 1.000 | 0.07 | 0.021 | 0.033 | 0.202 |
| | WLAN6GHz | 802.11ax-HE160 MCS0 | Front | 15mm | Ant 4 | Full Power | 47 | 6185 | 1 | 9.84 | 11.84 | 1.585 | 100 | 1.000 | -0.08 | 0.032 | 0.051 | 0.307 |
| | WLAN6GHz | 802.11ax-HE160 MCS0 | Front | 15mm | Ant 4 | Full Power | 111 | 6505 | 1 | 11.69 | 13.69 | 1.585 | 100 | 1.000 | 0.09 | 0.043 | 0.068 | 0.436 |
| | WLAN6GHz | 802.11ax-HE160 MCS0 | Front | 15mm | Ant 4 | Full Power | 175 | 6825 | 1 | 11.63 | 13.63 | 1.585 | 100 | 1.000 | 0.08 | 0.025 | 0.040 | 0.264 |
| | WLAN6GHz | 802.11ax-HE160 MCS0 | Front | 15mm | Ant 5 | Full Power | 207 | 6985 | 1 | 12.46 | 14.46 | 1.585 | 100 | 1.000 | -0.06 | 0.042 | 0.067 | 0.414 |
| | WLAN6GHz | 802.11ax-HE160 MCS0 | Back | 15mm | Ant 5 | Full Power | 207 | 6985 | 1 | 12.46 | 14.46 | 1.585 | 100 | 1.000 | -0.06 | 0.042 | 0.067 | 0.413 |
| | WLAN6GHz | 802.11ax-HE160 MCS0 | Front | 15mm | Ant 5 | Full Power | 15 | 6025 | 1 | 10.65 | 12.65 | 1.585 | 100 | 1.000 | 0.06 | 0.023 | 0.036 | 0.228 |
| | WLAN6GHz | 802.11ax-HE160 MCS0 | Front | 15mm | Ant 5 | Full Power | 47 | 6185 | 1 | 10.87 | 12.87 | 1.585 | 100 | 1.000 | 0.02 | 0.032 | 0.051 | 0.33 |
| | WLAN6GHz | 802.11ax-HE160 MCS0 | Front | 15mm | Ant 5 | Full Power | 111 | 6505 | 1 | 12.44 | 14.44 | 1.585 | 100 | 1.000 | 0.07 | 0.033 | 0.052 | 0.338 |
| | WLAN6GHz | 802.11ax-HE160 MCS0 | Front | 15mm | Ant 5 | Full Power | 175 | 6825 | 1 | 12.07 | 14.07 | 1.585 | 100 | 1.000 | 0 | 0.017 | 0.027 | 0.144 |
| | WLAN6GHz | 802.11ax-HE160 MCS0 | Front | 15mm | Ant 4+5 | Full Power | 207 | 6985 | 1 | 15.11 | 17.11 | 1.585 | 100 | 1.000 | -0.02 | 0.062 | 0.098 | 0.655 |
| | WLAN6GHz | 802.11ax-HE160 MCS0 | Back | 15mm | Ant 4+5 | Full Power | 207 | 6985 | 1 | 15.11 | 17.11 | 1.585 | 100 | 1.000 | -0.15 | 0.036 | 0.057 | 0.355 |
| | WLAN6GHz | 802.11ax-HE160 MCS0 | Front | 15mm | Ant 4+5 | Full Power | 15 | 6025 | 1 | 13.43 | 15.43 | 1.585 | 100 | 1.000 | 0.01 | 0.018 | 0.029 | 0.174 |
| | WLAN6GHz | 802.11ax-HE160 MCS0 | Front | 15mm | Ant 4+5 | Full Power | 47 | 6185 | 1 | 13.40 | 15.40 | 1.585 | 100 | 1.000 | -0.05 | 0.026 | 0.041 | 0.259 |
| | WLAN6GHz | 802.11ax-HE160 MCS0 | Front | 15mm | Ant 4+5 | Full Power | 111 | 6505 | 1 | 15.09 | 17.09 | 1.585 | 100 | 1.000 | 0.08 | 0.029 | 0.046 | 0.312 |
| | WLAN6GHz | 802.11ax-HE160 MCS0 | Front | 15mm | Ant 4+5 | Full Power | 175 | 6825 | 1 | 14.87 | 16.87 | 1.585 | 100 | 1.000 | -0.02 | 0.028 | 0.044 | 0.293 |
| | WLAN6GHz | 802.11ax-HE160 MCS0 | Front | 15mm | Ant 5 | Full Power | 207 | 6985 | 1 | 14.68 | 16.68 | 1.585 | 100 | 1.000 | 0.16 | 0.045 | 0.071 | 0.427 |
| | WLAN6GHz | 802.11ax-HE160 MCS0 | Back | 15mm | Ant 5 | Full Power | 207 | 6985 | 1 | 14.68 | 16.68 | 1.585 | 100 | 1.000 | 0.03 | 0.048 | 0.076 | 0.477 |
| | WLAN6GHz | 802.11ax-HE160 MCS0 | Back | 15mm | Ant 5 | Full Power | 15 | 6025 | 1 | 9.93 | 11.93 | 1.585 | 100 | 1.000 | 0.05 | 0.018 | 0.029 | 0.184 |
| | WLAN6GHz | 802.11ax-HE160 MCS0 | Back | 15mm | Ant 5 | Full Power | 47 | 6185 | 1 | 10.75 | 12.75 | 1.585 | 100 | 1.000 | 0.08 | 0.022 | 0.035 | 0.229 |
| | WLAN6GHz | 802.11ax-HE160 MCS0 | Back | 15mm | Ant 5 | Full Power | 111 | 6505 | 1 | 13.17 | 15.17 | 1.585 | 100 | 1.000 | 0.01 | 0.042 | 0.067 | 0.405 |
| | WLAN6GHz | 802.11ax-HE160 MCS0 | Back | 15mm | Ant 5 | Full Power | 175 | 6825 | 1 | 14.38 | 16.38 | 1.585 | 100 | 1.000 | 0.04 | 0.025 | 0.040 | 0.243 |
| | WLAN6GHz | 802.11ax-HE160 MCS0 | Front | 15mm | Ant 6 | Full Power | 207 | 6985 | 1 | 13.26 | 15.26 | 1.585 | 100 | 1.000 | 0.17 | 0.014 | 0.022 | 0.106 |
| | WLAN6GHz | 802.11ax-HE160 MCS0 | Back | 15mm | Ant 6 | Full Power | 207 | 6985 | 1 | 13.26 | 15.26 | 1.585 | 100 | 1.000 | -0.17 | 0.038 | 0.060 | 0.365 |
| | WLAN6GHz | 802.11ax-HE160 MCS0 | Back | 15mm | Ant 6 | Full Power | 15 | 6025 | 1 | 10.97 | 12.97 | 1.585 | 100 | 1.000 | 0.16 | 0.015 | 0.024 | 0.15 |
| | WLAN6GHz | 802.11ax-HE160 MCS0 | Back | 15mm | Ant 6 | Full Power | 47 | 6185 | 1 | 9.96 | 11.96 | 1.585 | 100 | 1.000 | 0.05 | 0.014 | 0.022 | 0.125 |
| | WLAN6GHz | 802.11ax-HE160 MCS0 | Back | 15mm | Ant 6 | Full Power | 111 | 6505 | 1 | 11.85 | 13.85 | 1.585 | 100 | 1.000 | 0.11 | 0.027 | 0.043 | 0.284 |
| | WLAN6GHz | 802.11ax-HE160 MCS0 | Back | 15mm | Ant 6 | Full Power | 175 | 6825 | 1 | 12.86 | 14.86 | 1.585 | 100 | 1.000 | 0.1 | 0.019 | 0.030 | 0.2 |
| | WLAN6GHz | 802.11ax-HE160 MCS0 | Front | 15mm | Ant 5+6 | Full Power | 207 | 6985 | 1 | 17.04 | 19.04 | 1.585 | 100 | 1.000 | -0.04 | 0.045 | 0.071 | 0.435 |
| | WLAN6GHz | 802.11ax-HE160 MCS0 | Back | 15mm | Ant 5+6 | Full Power | 207 | 6985 | 1 | 17.04 | 19.04 | 1.585 | 100 | 1.000 | -0.03 | 0.035 | 0.055 | 0.317 |
| | WLAN6GHz | 802.11ax-HE160 MCS0 | Front | 15mm | Ant 5+6 | Full Power | 15 | 6025 | 1 | 10.97 | 12.97 | 1.585 | 100 | 1.000 | 0.05 | 0.020 | 0.032 | 0.211 |
| | WLAN6GHz | 802.11ax-HE160 MCS0 | Front | 15mm | Ant 5+6 | Full Power | 47 | 6185 | 1 | 9.96 | 11.96 | 1.585 | 100 | 1.000 | -0.15 | 0.020 | 0.032 | 0.205 |
| | WLAN6GHz | 802.11ax-HE160 MCS0 | Front | 15mm | Ant 5+6 | Full Power | 111 | 6505 | 1 | 11.85 | 13.85 | 1.585 | 100 | 1.000 | 0.08 | 0.033 | 0.052 | 0.31 |
| | WLAN6GHz | 802.11ax-HE160 MCS0 | Front | 15mm | Ant 5+6 | Full Power | 175 | 6825 | 1 | 12.86 | 14.86 | 1.585 | 100 | 1.000 | -0.09 | 0.025 | 0.040 | 0.233 |



12.4 PD Test Result

Power Density General Notes:

1. The manufacturer has confirmed that the devices tested have the same physical, mechanical and thermal characteristics and are within operational tolerances expected for production units.
2. Batteries are fully charged at the beginning of the measurements.
3. Absorbed power density (APD) using a 4cm² averaging area is reported based on SAR measurements.
4. Power density was calculated by repeated E-field measurements on two measurement planes separated by λ/4.
5. The device was configured to transmit continuously at the required data rate, channel bandwidth and signal modulation, using the highest transmission duty factor supported by the test mode tools.
6. Per FCC guidance and equipment manufacturer guidance, power density results were scaled according to IEC 62479:2010 for the portion of the measurement uncertainty > 30%. Total expanded uncertainty of 2.68 dB (85.4%) was used to determine the psPD measurement scaling factor.
7. Since this device is considered a phablet and there is no different PD limit on different exposure conditions, therefore select highest phablet SAR at 0 mm test distance and configurations evaluate power density. Since there is no different PD limit on different exposure conditions, therefore the PD test was performed of a 2mm separation between sensor and EUT surface to cover all exposure conditions of phablet.
8. According to the 7th as above, so chose front at ant4 and back at ant6 and right side at ant5 perform full power density testing at 2mm, test the other channels using the maximum among all antennas with the highest power density.
9. The measurement procedure consists of measuring the PDinc at two different distances: 2 mm (compliance distance) and λ/5. The grid extents should be large enough to fully capture the transmitted energy. The grid step should be fine enough to demonstrate that the integrated Power Density iPDn fulfill the criterion described below. Since iPD ratio between the two distances is ≥ -1dB, the grid step (0.0625) was sufficient for determining compliance at d=2mm.

$$10 \cdot \log_{10} \frac{iPD_n(2mm)}{iPD_n(\lambda/5)} \geq -1$$

<WLAN PD>

| Band | Mode | Test Position | Gap (mm) | Antenna | Ch. | Freq. (MHz) | Average Power (dBm) | Grip Step (λ) | iPDn | iPD ratio (≥ -1) | Normal psPD (W/m ²) | Total psPD (W/m ²) |
|----------|---------------------|---------------|----------|---------|-----|-------------|---------------------|---------------|------|------------------|---------------------------------|--------------------------------|
| WLAN6GHz | 802.11ax-HE160 MCS0 | Right Side | 2mm | Ant 5 | 15 | 6025 | 9.93 | 0.0625 | 2.35 | -0.94 | 2.32 | 3.18 |
| WLAN6GHz | 802.11ax-HE160 MCS0 | Right Side | 10mm | Ant 5 | 15 | 6025 | 9.93 | 0.25 | 2.92 | | 1.48 | 1.61 |
| WLAN6GHz | 802.11ax-HE160 MCS0 | Right Side | 2mm | Ant 5 | 207 | 6985 | 14.68 | 0.0625 | 4.02 | -0.07 | 2.35 | 2.95 |
| WLAN6GHz | 802.11ax-HE160 MCS0 | Right Side | 8.59mm | Ant 5 | 207 | 6985 | 14.68 | 0.25 | 4.09 | | 1.67 | 1.82 |

| Plot No. | Band | Mode | Test Position | Gap (mm) | Antenna | Ch. | Freq. (MHz) | Sample | Average Power (dBm) | Tune-Up Limit (dBm) | Tune-up Scaling Factor | Duty Cycle % | Duty Cycle Scaling Factor | Grip Step (λ) | Scaling Factor for measurement uncertainty | Power Drift (dB) | Normal psPD (W/m ²) | Scaled Normal psPD (W/m ²) | Total psPD (W/m ²) | Scaled Total psPD (W/m ²) |
|----------|----------|---------------------|---------------|----------|---------|-----|-------------|--------|---------------------|---------------------|------------------------|--------------|---------------------------|---------------|--|------------------|---------------------------------|--|--------------------------------|---------------------------------------|
| | WLAN6GHz | 802.11ax-HE160 MCS0 | Right Side | 2mm | Ant 5 | 15 | 6025 | 1 | 9.93 | 11.93 | 1.585 | 100.00 | 1.000 | 0.0625 | 1.5535 | -0.05 | 2.32 | 5.71 | 3.18 | 7.83 |
| | WLAN6GHz | 802.11ax-HE160 MCS0 | Right Side | 2mm | Ant 5 | 207 | 6985 | 1 | 14.68 | 16.68 | 1.585 | 100.00 | 1.000 | 0.0625 | 1.5535 | -0.1 | 2.35 | 5.79 | 2.95 | 7.26 |
| | WLAN6GHz | 802.11ax-HE160 MCS0 | Front | 2mm | Ant 4 | 207 | 6985 | 1 | 11.71 | 13.71 | 1.585 | 100.00 | 1.000 | 0.0625 | 1.5535 | 0.08 | 2.31 | 5.69 | 2.94 | 7.24 |
| | WLAN6GHz | 802.11ax-HE160 MCS0 | Back | 2mm | Ant 6 | 207 | 6985 | 1 | 13.26 | 15.26 | 1.585 | 100.00 | 1.000 | 0.0625 | 1.5535 | 0.08 | 1.06 | 2.61 | 1.23 | 3.03 |
| | WLAN6GHz | 802.11ax-HE160 MCS0 | Right Side | 2mm | Ant 5 | 47 | 6185 | 1 | 10.33 | 12.33 | 1.585 | 100.00 | 1.000 | 0.0625 | 1.5535 | -0.08 | 1.97 | 4.85 | 2.93 | 7.21 |
| 01 | WLAN6GHz | 802.11ax-HE160 MCS0 | Right Side | 2mm | Ant 5 | 111 | 6505 | 1 | 12.67 | 14.67 | 1.585 | 100.00 | 1.000 | 0.0625 | 1.5535 | -0.02 | 2.31 | 5.69 | 3.23 | 7.95 |
| | WLAN6GHz | 802.11ax-HE160 MCS0 | Right Side | 2mm | Ant 5 | 111 | 6505 | 2 | 12.67 | 14.67 | 1.585 | 100.00 | 1.000 | 0.0625 | 1.5535 | -0.09 | 1.83 | 4.51 | 2.35 | 5.79 |
| | WLAN6GHz | 802.11ax-HE160 MCS0 | Right Side | 2mm | Ant 5 | 175 | 6825 | 1 | 13.89 | 15.89 | 1.585 | 100.00 | 1.000 | 0.0625 | 1.5535 | 0.03 | 2.69 | 6.62 | 3.13 | 7.71 |

Test Engineer: Hank Huang, Kevin Xu, David Dai, Bin He

13. Uncertainty Assessment

Declaration of Conformity:

The test results with all measurement uncertainty excluded is presented in accordance with the regulation limits or requirements declared by manufacturers.

Comments and Explanations:

The declared of product specification for EUT presented in the report are provided by the manufacturer, and the manufacturer takes all the responsibilities for the accuracy of product specification.

The component of uncertainty may generally be categorized according to the methods used to evaluate them. The evaluation of uncertainty by the statistical analysis of a series of observations is termed a Type A evaluation of uncertainty. The evaluation of uncertainty by means other than the statistical analysis of a series of observation is termed a Type B evaluation of uncertainty. Each component of uncertainty, however evaluated, is represented by an estimated standard deviation, termed standard uncertainty, which is determined by the positive square root of the estimated variance.

A Type A evaluation of standard uncertainty may be based on any valid statistical method for treating data. This includes calculating the standard deviation of the mean of a series of independent observations; using the method of least squares to fit a curve to the data in order to estimate the parameter of the curve and their standard deviations; or carrying out an analysis of variance in order to identify and quantify random effects in certain kinds of measurement.

A type B evaluation of standard uncertainty is typically based on scientific judgment using all of the relevant information available. These may include previous measurement data, experience, and knowledge of the behavior and properties of relevant materials and instruments, manufacture’s specification, data provided in calibration reports and uncertainties assigned to reference data taken from handbooks. Broadly speaking, the uncertainty is either obtained from an outdoor source or obtained from an assumed distribution, such as the normal distribution, rectangular or triangular distributions indicated in table below.

| Uncertainty Distributions | Normal | Rectangular | Triangular | U-Shape |
|------------------------------------|--------------------|--------------------|-------------------|----------------|
| Multi-plying Factor ^(a) | 1/k ^(b) | 1/√3 | 1/√6 | 1/√2 |

(a) standard uncertainty is determined as the product of the multiplying factor and the estimated range of variations in the measured quantity

(b) κ is the coverage factor

Standard Uncertainty for Assumed Distribution

The combined standard uncertainty of the measurement result represents the estimated standard deviation of the result. It is obtained by combining the individual standard uncertainties of both Type A and Type B evaluation using the usual “root-sum-squares” (RSS) methods of combining standard deviations by taking the positive square root of the estimated variances.

Expanded uncertainty is a measure of uncertainty that defines an interval about the measurement result within which the measured value is confidently believed to lie. It is obtained by multiplying the combined standard uncertainty by a coverage factor. Typically, the coverage factor ranges from 2 to 3. Using a coverage factor allows the true value of a measured quantity to be specified with a defined probability within the specified uncertainty range. For purpose of this document, a coverage factor two is used, which corresponds to confidence interval of about 95 %. The DASY uncertainty Budget is shown in the following tables.

The judgment of conformity in the report is based on the measurement results excluding the measurement uncertainty.



| DASY6 Uncertainty Budget (Frequency band: 4 MHz - 10 GHz range) | | | | | | | |
|--|------------------------|-------------|---------|---------|----------|--------------------------------|---------------------------------|
| Error Description | Uncertainty Value (±%) | Probability | Divisor | (Ci) 1g | (Ci) 10g | Standard Uncertainty (1g) (±%) | Standard Uncertainty (10g) (±%) |
| Measurement System | | | | | | | |
| Probe Calibration | 18.60 | N | 2 | 1 | 1 | 9.3 | 9.3 |
| Probe Calibration Drift | 1.00 | N | 1 | 1 | 1 | 1.0 | 1.0 |
| Probe Linearity | 4.70 | R | 1.732 | 1 | 1 | 2.7 | 2.7 |
| Broadband Signal | 3.00 | N | 1 | 1 | 1 | 3.0 | 3.0 |
| Probe Isotropy | 7.60 | R | 2 | 1 | 1 | 3.8 | 3.8 |
| Data Acquisition | 0.30 | N | 1.732 | 1 | 1 | 0.2 | 0.2 |
| RF Ambient | 1.80 | N | 1 | 1 | 1 | 1.8 | 1.8 |
| Probe Positioning | 0.20 | N | 1 | 0.33 | 0.33 | 0.1 | 0.1 |
| Data Processing | 3.50 | N | 1 | 1 | 1 | 3.5 | 3.5 |
| Phantom and Device Errors | | | | | | | |
| Conductivity (meas.) DAK | 2.50 | N | 1 | 0.78 | 0.71 | 2.0 | 1.8 |
| Conductivity (temp.) BB | 5.40 | R | 1.732 | 0.78 | 0.71 | 2.4 | 2.2 |
| Phantom Permittivity | 14.00 | R | 1.732 | 0.5 | 0.5 | 4.0 | 4.0 |
| Distance DUT - TSL | 2.00 | N | 1 | 2 | 2 | 4.0 | 4.0 |
| Device Holder | 3.60 | N | 1 | 1 | 1 | 3.6 | 3.6 |
| DUT Modulationm | 2.40 | R | 1.732 | 1 | 1 | 1.4 | 1.4 |
| Time-average SAR | 2.60 | R | 1.732 | 1 | 1 | 1.5 | 1.5 |
| DUT drift | 5.00 | N | 1 | 1 | 1 | 5.0 | 5.0 |
| Correction to the SAR results | | | | | | | |
| Deviation to Target | 1.90 | N | 1 | 1 | 0.84 | 1.9 | 1.6 |
| SAR scalingp | 0.00 | R | 1.732 | 1 | 1 | 0.0 | 0.0 |
| Combined Std. Uncertainty | | | | | | 14.9% | 14.8% |
| Coverage Factor for 95 % | | | | | | K=2 | K=2 |
| Expanded STD Uncertainty | | | | | | 29.8% | 29.6% |

SAR Uncertainty Budget for frequency range 4MHz to 10GHz



| cDASY6 Module mmWave Uncertainty Budget Evaluation Distances to the Antennas > $\lambda/2\pi$ In Compliance with IEC TR 63170 | | | | | |
|---|-------------------------------|-------------|---------|------|----------------------------------|
| Error Description | Uncertainty Value (\pm dB) | Probability | Divisor | (Ci) | Standard Uncertainty (\pm dB) |
| Uncertainty terms dependent on the measurement system | | | | | |
| Probe Calibration | 0.49 | N | 1 | 1 | 0.49 |
| Probe correction | 0.00 | R | 1.732 | 1 | 0.00 |
| Frequency response (BW \leq 1 GHz) | 0.20 | R | 1.732 | 1 | 0.12 |
| Sensor cross coupling | 0.00 | R | 1.732 | 1 | 0.00 |
| Isotropy | 0.50 | R | 1.732 | 1 | 0.29 |
| Linearity | 0.20 | R | 1.732 | 1 | 0.12 |
| Probe scattering | 0.00 | R | 1.732 | 1 | 0.00 |
| Probe positioning offset | 0.30 | R | 1.732 | 1 | 0.17 |
| Probe positioning repeatability | 0.04 | R | 1.732 | 1 | 0.02 |
| Sensor mechanical offset | 0.00 | R | 1.732 | 1 | 0.00 |
| Probe spatial resolution | 0.00 | R | 1.732 | 1 | 0.00 |
| Field impedance dependence | 0.00 | R | 1.732 | 1 | 0.00 |
| Amplitude and phase drift | 0.00 | R | 1.732 | 1 | 0.00 |
| Amplitude and phase noise | 0.04 | R | 1.732 | 1 | 0.02 |
| Measurement area truncation | 0.00 | R | 1.732 | 1 | 0.00 |
| Data acquisition | 0.03 | N | 1 | 1 | 0.03 |
| Sampling | 0.00 | R | 1.732 | 1 | 0.00 |
| Field reconstruction | 2.00 | R | 1.732 | 1 | 1.15 |
| Forward transformation | 0.00 | R | 1.732 | 1 | 0.00 |
| Power density scaling | 0.00 | R | 1.732 | 1 | 0.00 |
| Spatial averaging | 0.10 | R | 1.732 | 1 | 0.06 |
| System detection limit | 0.04 | R | 1.732 | 1 | 0.02 |
| Uncertainty terms dependent on the DUT and environmental factors | | | | | |
| Probe coupling with DUT | 0.00 | R | 1.732 | 1 | 0.0 |
| Modulation response | 0.40 | R | 1.732 | 1 | 0.2 |
| Integration time | 0.00 | R | 1.732 | 1 | 0.0 |
| Response time | 0.00 | R | 1.732 | 1 | 0.0 |
| Device holder influence | 0.10 | R | 1.732 | 1 | 0.1 |
| DUT alignment | 0.00 | R | 1.732 | 1 | 0.0 |
| RF ambient conditions | 0.04 | R | 1.732 | 1 | 0.0 |
| Ambient reflections | 0.04 | R | 1.732 | 1 | 0.0 |
| Immunity / secondary reception | 0.00 | R | 1.732 | 1 | 0.0 |
| Drift of the DUT | | R | 1.732 | 1 | |
| Combined Std. Uncertainty | | | | | 1.34 |
| Expanded STD Uncertainty (95%) | | | | | 2.68 |

PD Uncertainty Budget

14. References

- [1] FCC 47 CFR Part 2 “Frequency Allocations and Radio Treaty Matters; General Rules and Regulations”
- [2] ANSI/IEEE Std. C95.1-1992, “IEEE Standard for Safety Levels with Respect to Human Exposure to Radio Frequency Electromagnetic Fields, 3 kHz to 300 GHz”, September 1992
- [3] IEEE Std. 1528-2013, “IEEE Recommended Practice for Determining the Peak Spatial-Average Specific Absorption Rate (SAR) in the Human Head from Wireless Communications Devices: Measurement Techniques”, Sep 2013
- [4] SPEAG DASY System Handbook
- [5] FCC KDB 248227 D01 v02r02, “SAR Guidance for IEEE 802.11 (WiFi) Transmitters”, Oct 2015.
- [6] FCC KDB 447498 D04 v01, “Mobile and Portable Device RF Exposure Procedures and Equipment Authorization Policies”, Nov 2021
- [7] FCC KDB 648474 D04 v01r03, “SAR Evaluation Considerations for Wireless Handsets”, Oct 2015.
- [8] FCC KDB 865664 D01 v01r04, "SAR Measurement Requirements for 100 MHz to 6 GHz", Aug 2015.
- [9] FCC KDB 865664 D02 v01r02, “RF Exposure Compliance Reporting and Documentation Considerations” Oct 2015.
- [10] IEC/IEEE 62209-1528:2020, “Measurement procedure for the assessment of specific absorption rate of human exposure to radio frequency fields from hand-held and body-mounted wireless communication devices – Part 1528: Human models, instrumentation, and procedures (Frequency range of 4 MHz to 10 GHz)”, Oct. 2020
- [11] IEC 62479:2010 Assessment of the compliance of low power electronic and electrical equipment with the basic restrictions related to human exposure to electromagnetic fields (10 MHz to 300 GHz)
- [12] IEC TR 63170: 2018 Measurement procedure for the evaluation of power density related to human exposure to radio frequency fields from wireless communication devices operating between 6 GHz and 100 GHz



Appendix A. Plots of System Performance Check

The plots are shown as follows.

Measurement Report for Device, FRONT, Validation band, CW, Channel 10000 (10000.0 MHz)

Device Under Test Properties

| Model, Manufacturer | Dimensions [mm] | IMEI | DUT Type |
|---------------------|-----------------------|------|----------|
| Device, | 100.0 x 100.0 x 105.0 | | Source |

Exposure Conditions

| Phantom Section | Position, Test Distance [mm] | Band | Group, UID | Frequency [MHz], Channel Number | Conversion Factor |
|-----------------|------------------------------|-----------------|------------|---------------------------------|-------------------|
| 5G | FRONT, 10.00 | Validation band | CW, 0-- | 10000.0, 10000 | 1.0 |

Hardware Setup

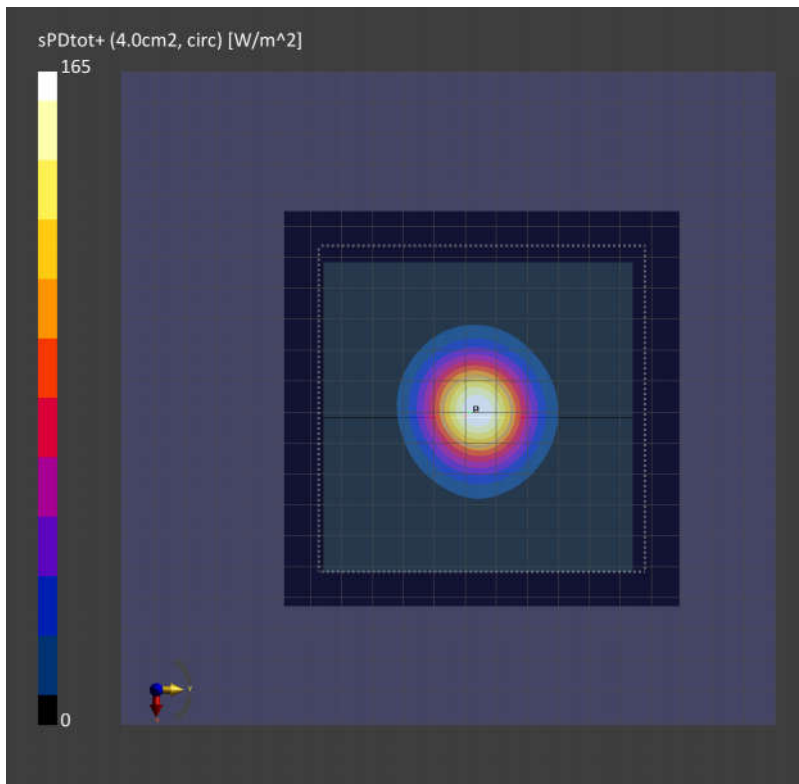
| Phantom | Medium | Probe, Calibration Date | DAE, Calibration Date |
|---------|--------|---------------------------------------|-------------------------|
| mmWave | Air - | EUmmWV4 - SN9432_F1-55GHz, 2021-11-29 | DAE4 Sn1210, 2022-04-12 |

Scans Setup

| | |
|---------------------|---------------|
| Scan Type | 5G Scan |
| Grid Extents [mm] | 120.0 x 120.0 |
| Grid Steps [lambda] | 0.25 x 0.25 |
| Sensor Surface [mm] | 10.0 |
| MAIA | N/A |

Measurement Results

| | |
|------------------------------|------------|
| Scan Type | 5G Scan |
| Date | 2022-07-15 |
| Avg. Area [cm ²] | 4.00 |
| psPDn+ [W/m ²] | 165 |
| psPDtot+ [W/m ²] | 165 |
| psPDmod+ [W/m ²] | 168 |
| E _{max} [V/m] | 297 |
| Power Drift [dB] | 0.03 |



System Check_Head_6500MHz

DUT:D6.5GHzV2 - SN:1026

Communication System: Custom Band; Frequency: 6500.0

Medium: HSL_6500_220628. Medium parameters used: $f=6500.0$ MHz; $\sigma=6.08$ S/m; $\epsilon_r=34.0$

Ambient Temperature: 23.5°C; Liquid Temperature: 22.5°C

DASY6 Configuration:

- Probe: EX3DV4 - SN7346; ConvF(5.3, 5.3, 5.3); Calibrated: 2022/3/30
- Sensor-Surface: 1.4 mm
- Electronics: DAE4 Sn1210; Calibrated: 2022/4/12
- Phantom: Twin-SAM1(P1aP2a20); Type: QD 000 P40 CD; Serial: TP:1670
- Measurement Software: cDASY6 V6.6.0.13926
- UID: CW, 0--

Area Scan (51.0 mm x 51.0 mm): Measurement Grid: 8.5 mm x 8.5 mm

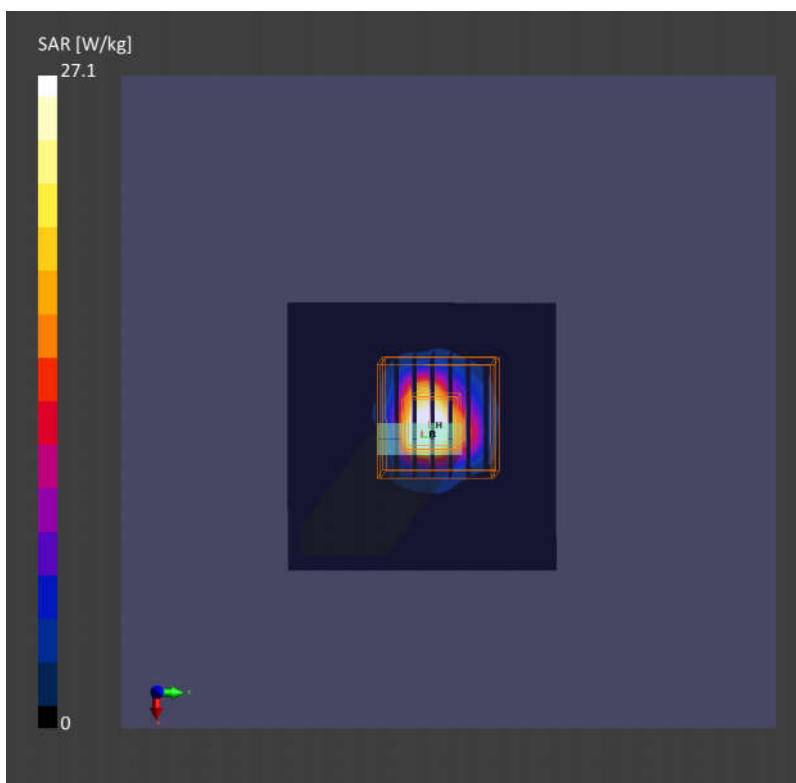
SAR (1g) = 21.7 W/kg; SAR (10g) = 4.63 W/kg;

Zoom Scan (22.0 mm x 22.0 mm x 22.0 mm): Measurement Grid: 3.4 mm x 3.4 mm x 1.4 mm

Power Drift = 0.01 dB

SAR (1g) = 27.1 W/kg; SAR (10g) = 4.88 W/kg;

psAPD (4.0cm², sq) = 123 [W/m²];





Appendix B. Plots of SAR Measurement

The plots are shown as follows.

01_WLAN6GHz_802.11ax-HE160 MCS0_Right Side_2mm_Ch111 Device Under Test Properties

| Model, Manufacturer | Dimensions [mm] | IMEI | DUT Type |
|---------------------|--------------------|------|----------|
| Device, | 174.0 x 78.0 x 8.0 | | Phone |

Exposure Conditions

| Phantom Section | Position, Test Distance [mm] | Band | Group, UID | Frequency [MHz], Channel Number | Conversion Factor |
|-----------------|------------------------------|---------|-----------------|---------------------------------|-------------------|
| 5G | EDGE RIGHT, 2.00 | U-NII-6 | WLAN, 10743-AAC | 6505.0, 111 | 1.0 |

Hardware Setup

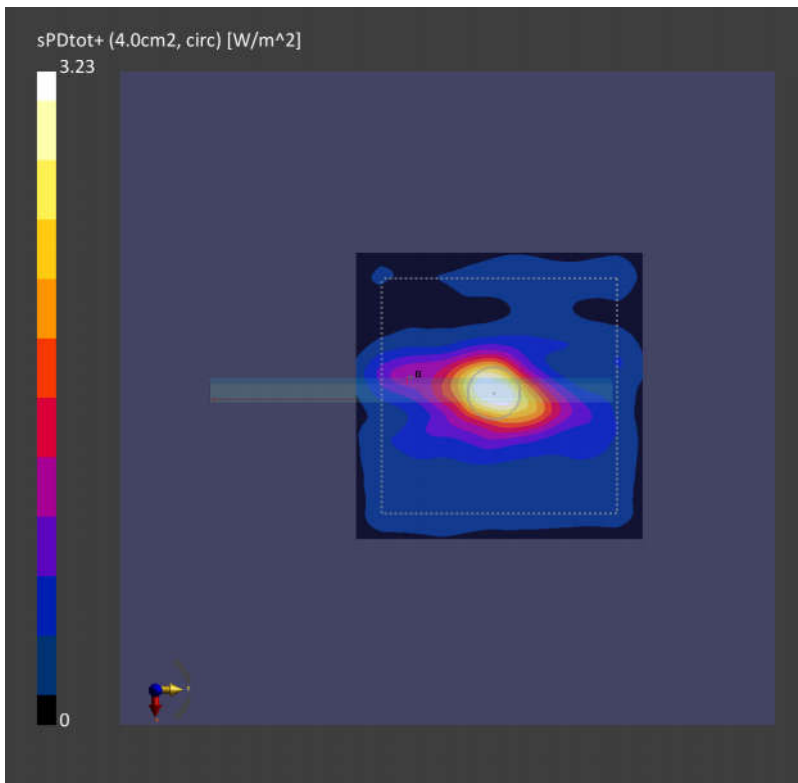
| Phantom | Medium | Probe, Calibration Date | DAE, Calibration Date |
|---------|--------|---------------------------------------|-------------------------|
| mmWave | Air - | EUmmWV4 - SN9432_F1-55GHz, 2021-11-29 | DAE4 Sn1210, 2022-04-12 |

Scans Setup

| Scan Type | 5G Scan |
|---------------------|-----------------|
| Grid Extents [mm] | 120.0 x 120.0 |
| Grid Steps [lambda] | 0.0625 x 0.0625 |
| Sensor Surface [mm] | 2.0 |
| MAIA | N/A |

Measurement Results

| Scan Type | 5G Scan |
|------------------------------|------------|
| Date | 2022-07-16 |
| Avg. Area [cm ²] | 4.00 |
| psPDn+ [W/m ²] | 2.31 |
| psPDtot+ [W/m ²] | 3.23 |
| psPDmod+ [W/m ²] | 4.01 |
| E _{max} [V/m] | 75.0 |
| Power Drift [dB] | -0.02 |



01_WLAN6GHz_802.11ax-HE160 MCS0_Left Cheek_Ch207

Communication System: U-NII-8; Frequency: 6985.0

Medium: HSL_6500_220628 Medium parameters used: $f = 6985.0$ MHz; $\sigma = 6.67$ S/m; $\epsilon_r = 33.2$

Ambient Temperature: 23.5°C; Liquid Temperature: 22.5°C

DASY6 Configuration:

- Probe: EX3DV4 - SN7346; ConvF(5.3, 5.3, 5.3); Calibrated: 2022/3/30
- Sensor-Surface: 1.4 mm
- Electronics: DAE4 Sn1210; Calibrated: 2022/4/12
- Phantom: Twin-SAM1(P1aP2a20); Type: QD 000 P40 CD; Serial: TP:1670
- Measurement Software: cDASY6 V6.6.0.13926
- UID: WLAN, 10743-AAC

Area Scan (119.0 mm x 221.0 mm): Measurement Grid: 8.5 mm x 8.5 mm

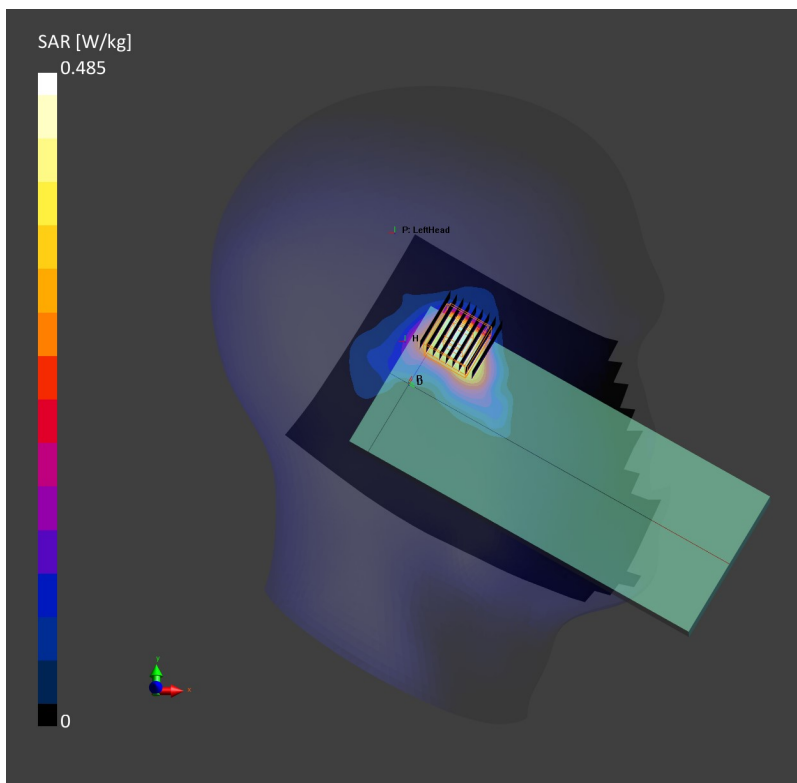
SAR (1g) = 0.446 W/kg; SAR (10g) = 0.174 W/kg;

Zoom Scan (22.0 mm x 22.0 mm x 22.0 mm): Measurement Grid: 3.4 mm x 3.4 mm x 1.4 mm

Power Drift = 0.08 dB

SAR (1g) = 0.485 W/kg; SAR (10g) = 0.175 W/kg;

psAPD (4.0cm², sq) = 5.11 [W/m²];



02_WLAN6GHz_802.11ax-HE160 MCS0_Front_15mm_Ch207

Communication System: U-NII-8; Frequency: 6985.0

Medium: HSL_6500_220628 Medium parameters used: $f = 6985.0$ MHz; $\sigma = 6.67$ S/m; $\epsilon_r = 33.2$

Ambient Temperature: 23.5°C; Liquid Temperature: 22.5°C

DASY6 Configuration:

- Probe: EX3DV4 - SN7346; ConvF(5.3, 5.3, 5.3); Calibrated: 2022/3/30
- Sensor-Surface: 1.4 mm
- Electronics: DAE4 Sn1210; Calibrated: 2022/4/12
- Phantom: Twin-SAM1(P1aP2a20); Type: QD 000 P40 CD; Serial: TP:1670
- Measurement Software: cDASY6 V6.6.0.13926
- UID: WLAN, 10743-AAC

Area Scan (119.0 mm x 221.0 mm): Measurement Grid: 8.5 mm x 8.5 mm

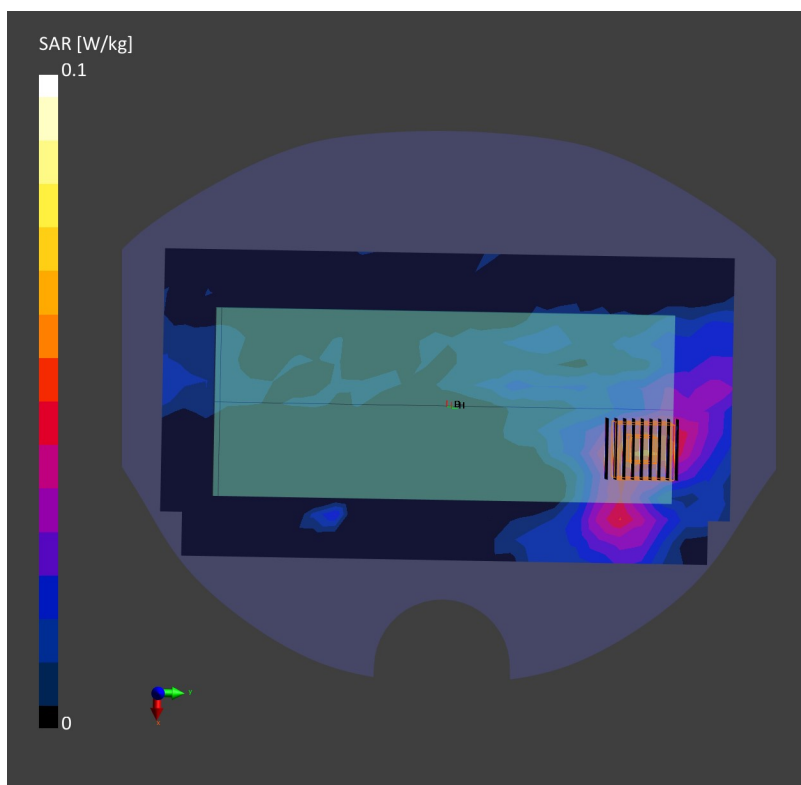
SAR (1g) = 0.061 W/kg; SAR (10g) = 0.024 W/kg;

Zoom Scan (22.0 mm x 22.0 mm x 22.0 mm): Measurement Grid: 3.4 mm x 3.4 mm x 1.4 mm

Power Drift = 0.00 dB

SAR (1g) = 0.065 W/kg; SAR (10g) = 0.027 W/kg;

psAPD (4.0cm², sq) = 0.667 [W/m²];



03_WLAN6GHz_802.11ax-HE160 MCS0_Right Side_0mm_Ch207

Communication System: U-NII-8; Frequency: 6985.0

Medium: HSL_6500_220628 Medium parameters used: $f = 6985.0$ MHz; $\sigma = 6.67$ S/m; $\epsilon_r = 33.2$

Ambient Temperature: 23.5°C; Liquid Temperature: 22.5°C

DASY6 Configuration:

- Probe: EX3DV4 - SN7346; ConvF(5.3, 5.3, 5.3); Calibrated: 2022/3/30
- Sensor-Surface: 1.4 mm
- Electronics: DAE4 Sn1210; Calibrated: 2022/4/12
- Phantom: Twin-SAM1(P1aP2a20); Type: QD 000 P40 CD; Serial: TP:1670
- Measurement Software: cDASY6 V6.6.0.13926
- UID: WLAN, 10743-AAC

Area Scan (51.0 mm x 221.0 mm): Measurement Grid: 8.5 mm x 8.5 mm

SAR (1g) = 1.82 W/kg; SAR (10g) = 0.586 W/kg;

Zoom Scan (22.0 mm x 22.0 mm x 22.0 mm): Measurement Grid: 2.7 mm x 2.7 mm x 1.2 mm

Power Drift = 0.08 dB

SAR (1g) = 1.86 W/kg; SAR (10g) = 0.594 W/kg;

psAPD (4.0cm², sq) = 13.5 [W/m²];

