

# Appendix A

## SAR System Validation Data

*of*

*Product Name*

**ASUS MyPal Pocket PC**  
(Built In WLAN & Bluetooth)

*Model*

**A626**

## 1 2450MHz System Validation Data

Report Date : 19-Oct-2006  
Measurement Date : 19-Oct-2006

### Product Data

Device Name : Dipole-2450  
Serial No. : Validation  
Type : Dipole  
Model : Standard  
Frequency : 2450.00 MHz  
Max. Transmit Pwr : 1 W  
Drift Time : 0 min(s)  
Length : 51.5 mm  
Width : 3.6 mm  
Depth : 30.4 mm  
Antenna Type : Internal  
Power Drift-Start : 66.835 W/kg  
Power Drift-Finish: 67.216 W/kg  
Power Drift (%) : 0.570

### Phantom Data

Name : APREL-Uni  
Type : Uni-Phantom  
Size (mm) : 280 x 280 x 200  
Location : Center

### Tissue Data

Type : HEAD  
Serial No. : 2450HEAD  
Frequency : 2450.00 MHz  
Last Calib. Date : 19-Oct-2006  
Temperature : 23.20 °C  
Ambient Temp. : 23.50 °C  
Humidity : 52.00 RH%  
Epsilon : 40.55 F/m  
Sigma : 1.81 S/m  
Density : 1000.00 kg/cu. m

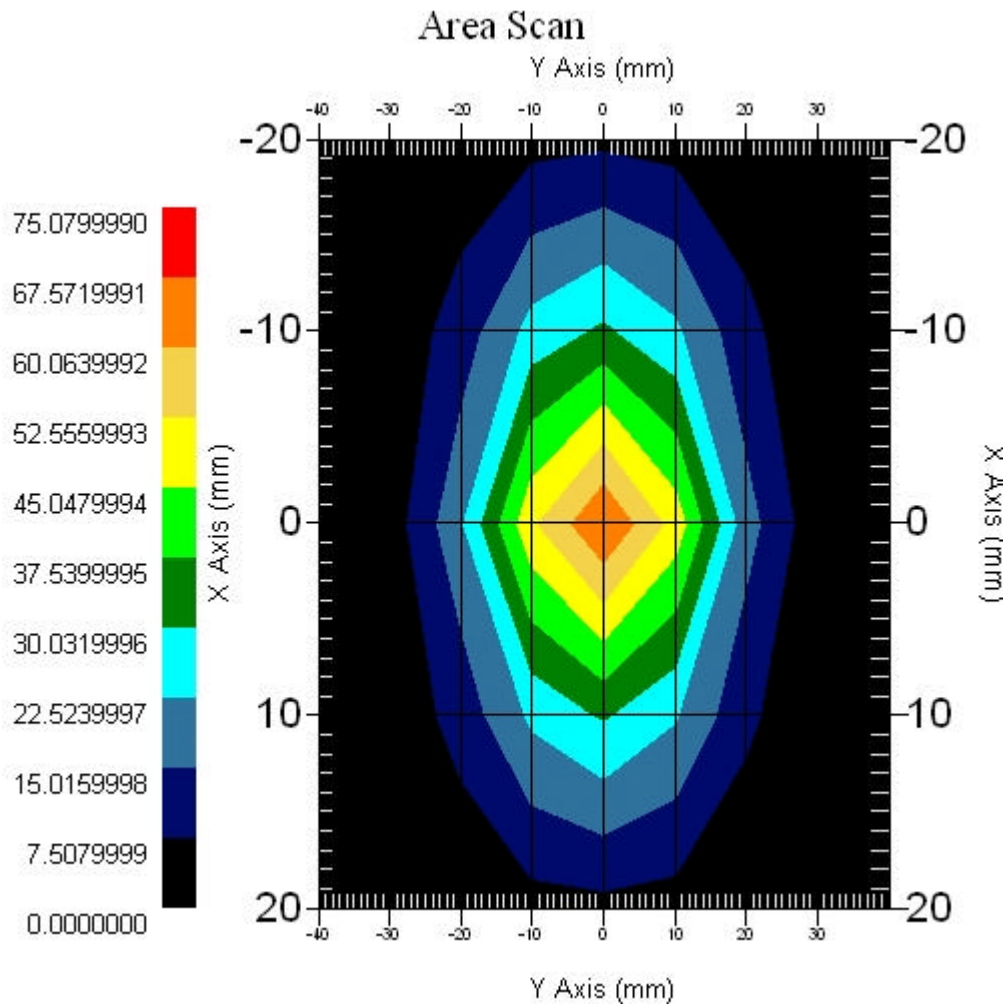
### Probe Data

Name : E-field Probe  
Model : ALS-E-020  
Type : E-Field Triangle  
Serial No. : 266  
Last Calib. Date : 22-Jun-2006  
Frequency : 2450.00 MHz  
Duty Cycle Factor: 1  
Conversion Factor: 4.9  
Probe Sensitivity: 1.20 1.20 1.20  $\mu\text{V}/(\text{V}/\text{m})^2$   
Compression Point: 95.00 mV  
Offset : 1.56 mm

Measurement Data

Crest Factor : 1  
 Tissue Temp. : 23.20 °C  
 Ambient Temp. : 23.50 °C  
 Area Scan : 5x9x1 : Measurement x=10mm, y=10mm, z=4mm  
 Zoom Scan : 5x5x8 : Measurement x=8mm, y=8mm, z=4mm

Channel : Mid - 2450MHz



1 gram SAR value : 52.200 W/kg  
 10 gram SAR value : 24.051 W/kg  
 Area Scan Peak SAR : 67.573 W/kg  
 Zoom Scan Peak SAR : 119.104 W/kg

### SAR-Z Axis at Hotspot x:0.30 y:-2.30

