



# A Test Lab Techno Corp.

Changan Lab : No. 140-1, Changan Street, Bade District, Taoyuan City 33465, Taiwan (R.O.C.).

Tel : 886-3-271-0188 / Fax : 886-3-271-0190



## SAR EVALUATION REPORT

Applicant	: ASUSTeK COMPUTER INC.
Applicant Address	: 4F, No. 150, Li-Te Rd., Peitou, Taipei, Taiwan
Product Type	: Intel Wireless-AC 9560
Trade Name	: Intel
Model Number	: 9560NGW
Received Date	: Mar. 18, 2019
Test Period	: Apr. 04 ~ Apr. 05, 2019
Issue Date	: Jun. 04, 2019
Test Environment	: Ambient Temperature : $22 \pm 2 \text{ }^\circ\text{C}$ Relative Humidity : 40 - 70 %
Standard	: ANSI/IEEE C95.1-1992 / IEEE Std. 1528-2013 47 CFR Part §2.1093 KDB 865664 D01 v01r04 / KDB 865664 D02 v01r02 KDB 447498 D01 v06 / KDB 248227 D01 v02r02 KDB 616217 D04 v01r02
Test Firm MRA designation number	: TW0010



1. A Test Lab Techno Corp. tested the above equipment in accordance with the requirements set forth in the above standards. All indications of Pass/Fail in this report are opinions expressed by A Test Lab Techno Corp. based on interpretations and/or observations of test results. The test results show that the equipment tested is capable of demonstrating compliance with the requirements as documented in this report.
2. This report shall not be reproduced except in full, without the written approval of A Test Lab Techno Corp. This document may be altered or revised by A Test Lab Techno Corp. personnel only, and shall be noted in the revision section of the document. The client should not use it to claim product endorsement by TAF, or any government agencies. The test results in the report only apply to the tested sample.

Approved By : Edison Hu  
(Edison Hu)

Tested By : Kris Pan  
(Kris Pan)



### **Revision History**

Rev.	Issue Date	Revisions	Revised By
00	May 02, 2019	Initial Issue	Shelly Chen
01	May 08, 2019	Page 18 Revised Conducted Power.	Shelly Chen
02	Jun. 04, 2019	Page 22 Revised Antenna location.	Serene Yang



# Contents

1. Summary of Maximum Reported SAR Value.....	4
2. Description of Equipment under Test (EUT) .....	5
3. Introduction.....	8
3.1 SAR Definition .....	8
4. SAR Measurement Setup .....	9
4.1 DASY E-Field Probe System.....	10
4.1.1 E-Field Probe Specification .....	10
4.2 Data Acquisition Electronic (DAE) System .....	11
4.3 Robot .....	11
4.4 Measurement Server .....	11
4.5 Device Holder .....	12
4.6 Oval Flat Phantom - ELI 5.0 .....	12
5. Tissue Simulating Liquids .....	13
5.1 The composition of the tissue simulating liquid .....	14
5.2 Liquid Parameters .....	15
5.3 Liquid Depth .....	16
6. SAR Testing with RF Transmitters.....	17
6.1 WLAN RF Conducted Power .....	17
6.2 Conducted Power.....	18
6.3 Antenna location.....	22
6.4 Standalone SAR Test Exclusion Calculation .....	23
6.5 Simultaneous Transmitting Evaluate .....	23
6.5.1 Sum of 1-g SAR of all simultaneously transmitting .....	23
6.5.2 SAR to peak location separation ratio (SPLSR).....	24
7. System Verification and Validation.....	25
7.1 Symmetric Dipoles for System Verification .....	25
7.2 Verification Summary .....	26
8. Test Equipment List.....	27
9. Measurement Uncertainty .....	28
10. Measurement Procedure.....	30
10.1 Spatial Peak SAR Evaluation .....	30
10.2 Area & Zoom Scan Procedures .....	31
10.3 Volume Scan Procedures.....	31
10.4 Power Drift Monitoring.....	31
11. SAR Test Results Summary.....	32
11.1 Body SAR Measurement.....	32
11.2 SAR Variability Measurement.....	33
11.3 SAR Exposure Limit .....	34
12. References.....	35
Appendix A - System Performance Check.....	36
Appendix B - SAR Measurement Data .....	40
Appendix C - Calibration.....	59



## 1. Summary of Maximum Reported SAR Value

Equipment Class	Mode	Highest Reported
		Body standalone SAR <sub>1g</sub> (W/kg)
DTS	WLAN 2.4 GHz ANT-Main	1.10
	WLAN 2.4 GHz ANT-AUX	0.42
U-NII	WLAN 5 GHz ANT-Main	1.00
	WLAN 5 GHz ANT-AUX	1.11
DSS	Bluetooth ANT-AUX	0.18
Highest Simultaneous Transmission SAR		Body standalone SAR <sub>1g</sub> (W/kg)
At test position Bottom of laptop		2.29

Note: The SAR limit (Head & Body: SAR<sub>1g</sub> 1.6 W/kg) for general population / uncontrolled exposure is specified in FCC 47 CFR part 2 (2.1093) and ANSI/IEEE C95.1-1992.



## 2. Description of Equipment under Test (EUT)

Applicant	ASUSTeK COMPUTER INC. 4F, No. 150, Li-Te Rd., Peitou, Taipei, Taiwan	
Manufacturer	ASUSTeK COMPUTER INC. 4F, No. 150, Li-Te Rd., Peitou, Taipei, Taiwan	
Product Type	Intel Wireless-AC 9560	
Trade Name	Intel	
Model Number	9560NGW	
FCC ID	MSQ9560NG	
Class II Permissive Change	<p>(1) This is to request a Class II permissive change for FCC ID: MSQ9560NG, originally granted on 11/20/2017</p> <p>The major change filed under this application is:</p> <p>Change #1: Additional Chassis added, ASUSTeK, model number: S432F, V432F, K432F. Models difference: All models are electrically identical, different model names are for marketing purpose.</p> <p>#2: Reduce the Output Power through firmware and SAR measurement were evaluated. (Only reduce Wi-Fi Output Power, Bluetooth Output Power haven't changes).</p> <p>#3: Addition one antenna, the antenna type is same, the antenna gain is lower than the original application.</p>	
Host Information	<p>Product Type: Notebook PC</p> <p>Trade Name: ASUS</p> <p>Model Name: S432F, V432F, K432F</p> <p>(All models are electrically identical, different model names are for marketing purpose.)</p>	
Frequency Range	Operate Modes	Operate Frequency (MHz)
	IEEE 802.11b / 802.11g / 802.11n 2.4 GHz 20 MHz	2412 - 2472
	IEEE 802.11n 2.4 GHz 40 MHz	2422 - 2462
	IEEE 802.11a U-NII Band I	5180 - 5240
	IEEE 802.11a U-NII Band II-A	5260 - 5320
	IEEE 802.11a U-NII Band II-C	5500 - 5700
	IEEE 802.11a U-NII Band III	5745 - 5825
	IEEE 802.11n 5 GHz 20 MHz U-NII Band I	5180 - 5240
	IEEE 802.11n 5 GHz 20 MHz U-NII Band II-A	5260 - 5320
	IEEE 802.11n 5 GHz 20 MHz U-NII Band II-C	5500 - 5700
	IEEE 802.11n 5 GHz 20 MHz U-NII Band III	5745 - 5825
	IEEE 802.11n 5 GHz 40 MHz U-NII Band I	5190 - 5230
	IEEE 802.11n 5 GHz 40 MHz U-NII Band II-A	5270 - 5310
	IEEE 802.11n 5 GHz 40 MHz U-NII Band II-C	5510 - 5670
	IEEE 802.11n 5 GHz 40 MHz U-NII Band III	5755 - 5795
	IEEE 802.11ac 80 MHz U-NII Band I	5210
	IEEE 802.11ac 80 MHz U-NII Band II-A	5290
	IEEE 802.11ac 80 MHz U-NII Band II-C	5530 - 5610
	IEEE 802.11ac 80 MHz U-NII Band III	5775
	IEEE 802.11ac 160 MHz UNII Band I + UNII Band II-A	5250
IEEE 802.11ac 160 MHz UNII Band II-C	5570	
Bluetooth BR/EDR	2402 - 2480	
Bluetooth LE	2402 - 2480	



	Operate Modes	Power (dBm)		Tune-up power (dBm)	
		Main	AUX	Main	AUX
Transmit Power (conducted power)	IEEE 802.11b	12.73	12.64	13	13
	IEEE 802.11g	12.69	12.68	13	13
	IEEE 802.11n 2.4 GHz 20 MHz	12.65	12.63	13	13
	IEEE 802.11n 2.4 GHz 40 MHz	12.71	12.47	13	13
	IEEE 802.11a U-NII Band I	10.54	10.53	11	11
	IEEE 802.11a U-NII Band II-A	10.75	10.83	11	11
	IEEE 802.11a U-NII Band II-C	10.67	10.71	11	11
	IEEE 802.11a U-NII Band III	10.91	10.95	11	11
	IEEE 802.11n 5 GHz 20 MHz U-NII Band I	10.67	10.63	11	11
	IEEE 802.11n 5 GHz 20 MHz U-NII Band II-A	10.79	10.70	11	11
	IEEE 802.11n 5 GHz 20 MHz U-NII Band II-C	10.58	10.71	11	11
	IEEE 802.11n 5 GHz 20 MHz U-NII Band III	10.91	10.71	11	11
	IEEE 802.11n 5 GHz 40 MHz U-NII Band I	10.58	10.56	11	11
	IEEE 802.11n 5 GHz 40 MHz U-NII Band II-A	10.88	10.43	11	11
	IEEE 802.11n 5 GHz 40 MHz U-NII Band II-C	10.56	10.62	11	11
	IEEE 802.11n 5 GHz 40 MHz U-NII Band III	10.71	10.77	11	11
	IEEE 802.11ac 80 MHz U-NII Band I	10.57	10.44	11	11
	IEEE 802.11ac 80 MHz U-NII Band II-A	10.61	10.11	11	11
	IEEE 802.11ac 80 MHz U-NII Band II-C (Channel 106)	10.43	10.19	11	11
	IEEE 802.11ac 80 MHz U-NII Band II-C	10.42	10.21	11	11
	IEEE 802.11ac 80 MHz U-NII Band III	10.63	10.17	11	11
	IEEE 802.11ac 160 MHz UNII Band I+ UNII Band II-A	10.52	10.57	11	11
	IEEE 802.11ac 160 MHz UNII Band II-C	10.51	10.43	11	11
	Bluetooth BR	---	10.06	---	11
Bluetooth EDR	---	5.76	---	7	
Bluetooth LE	---	5.49	---	7	
Device Category	Portable Device				
Application Type	Certification				

Note: The above EUT's information was declared by manufacturer. Please refer to the specifications or user's manual for more detailed description.



**Antenna list:**

Antenna Source	ANT	Manufacturer	Part No. (Vendor)	ASUS Part No.	Type	Frequency	Max. Gain (dBi)
1	Chain A	luxshare-ict	NA02-034011-012HS	04072-03360000	PIFA Antenna	2402 - 2480	-4.15
						5180 - 5240	0.34
						5260 - 5320	0.34
						5500 - 5720	0.24
						5745 - 5825	0.43
	Chain B	luxshare-ict	NA02-034011-012HS	04072-03360000	PIFA Antenna	2402 - 2480	-2.45
						5180 - 5240	-2.26
						5260 - 5320	-2.82
						5500 - 5720	-2.38
						5745 - 5825	-3.14

Note: The Chain A is connected to AUX port / Chain B is connected to Main port of module.



### 3. Introduction

The A Test Lab Techno Corp. has performed measurements of the maximum potential exposure to the user of **ASUSTeK COMPUTER INC. Trade Name : Intel Model(s) : 9560NGW**. The test procedures, as described in American National Standards, Institute C95.1-1999 [ 1 ] were employed and they specify the maximum exposure limit of 1.6 mW/g as averaged over any 1 gram of tissue for portable devices being used within 20 cm between user and EUT in the uncontrolled environment. A description of the product and operating configuration, detailed summary of the test results, methodology and procedures used in the equipment used are included within this test report.

#### 3.1 SAR Definition

Specific Absorption Rate (SAR) is defined as the time derivative (rate) of the incremental energy (dw) absorbed by (dissipated in) an incremental mass (dm) contained in a volume element (dv) of a given density ( $\rho$ ). The equation description is as below :

$$\text{SAR} = \frac{d}{dt} \left( \frac{dw}{dm} \right) = \frac{d}{dt} \left( \frac{dw}{\rho dv} \right)$$

SAR is expressed in units of Watts per kilogram (W/kg)

SAR measurement can be related to the electrical field in the tissue by

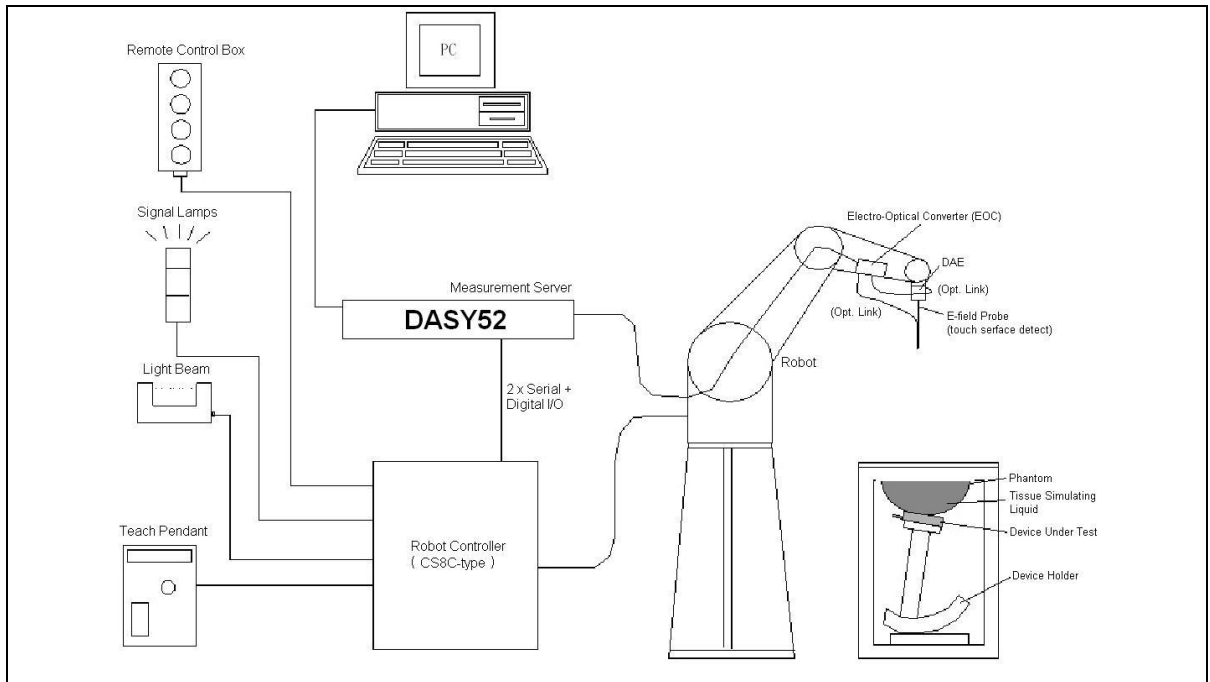
$$\text{SAR} = \frac{\sigma |E|^2}{\rho}$$

Where :

- $\sigma$  = conductivity of the tissue (S/m)
- $\rho$  = mass density of the tissue (kg/m<sup>3</sup>)
- $E$  = RMS electric field strength (V/m)



## 4. SAR Measurement Setup



The DASY52 system for performing compliance tests consists of the following items:

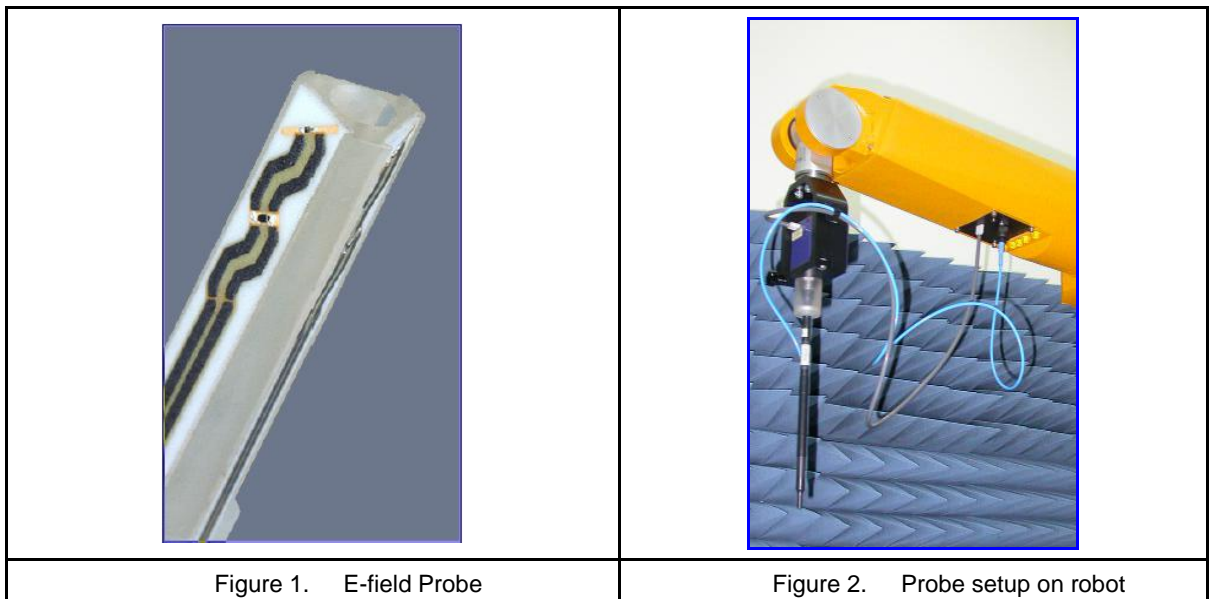
1. A standard high precision 6-axis robot (Stäubli TX family) with controller, teach pendant and software. An arm extension for accommodating the data acquisition electronics (DAE).
2. A dosimetric probe, i.e., an isotropic E-field probe optimized and calibrated for usage in tissue simulating liquid. The probe is equipped with an optical surface detector system.
3. A data acquisition electronics (DAE) which performs the signal amplification, signal multiplexing, AD-conversion, offset measurements, mechanical surface detection, collision detection, etc. The unit is battery powered with standard or rechargeable batteries. The signal is optically transmitted to the EOC.
4. The function of the measurement server is to perform the time critical tasks such as signal filtering, control of the robot operation and fast movement interrupts.
5. A probe alignment unit which improves the (absolute) accuracy of the probe positioning.
6. A computer operating Windows 2000 or Windows XP.
7. DASY52 software.
8. Remote controls with teach pendant and additional circuitry for robot safety such as warning lamps, etc.
9. The SAM twin phantom enabling testing left-hand and right-hand usage.
10. The device holder for handheld mobile phones.
11. Tissue simulating liquid mixed according to the given recipes.
12. Validation dipole kits allowing validating the proper functioning of the system.

## 4.1 DASY E-Field Probe System

The SAR measurements were conducted with the dosimetric probe (manufactured by SPEAG), designed in the classical triangular configuration [ 3 ] and optimized for dosimetric evaluation. The probe is constructed using the thick film technique; with printed resistive lines on ceramic substrates. The probe is equipped with an optical multi-fiber line ending at the front of the probe tip. It is connected to the EOC box on the robot arm and provides an automatic detection of the phantom surface. Half of the fibers are connected to a pulsed infrared transmitter, the other half to a synchronized receiver. As the probe approaches the surface, the reflection from the surface produces a coupling from the transmitting to the receiving fibers. This reflection increases first during the approach, reaches maximum and then decreases. If the probe is flatly touching the surface, the coupling is zero. The distance of the coupling maximum to the surface is independent of the surface reflectivity and largely independent of the surface to probe angle. The DASY software reads the reflection during a software approach and looks for the maximum using a 2nd order fitting. The approach is stopped when reaching the maximum.

### 4.1.1 E-Field Probe Specification

Construction	Symmetrical design with triangular core Built-in shielding against static charges PEEK enclosure material (resistant to organic solvents, e.g., DGBE)
Calibration	ISO/IEC 17025 calibration service available
Frequency	10 MHz to > 6 GHz Linearity: $\pm 0.2$ dB (30 MHz to 6 GHz)
Directivity	$\pm 0.3$ dB in brain tissue (rotation around probe axis) $\pm 0.5$ dB in brain tissue (rotation normal probe axis)
Dimensions	Overall length: 337 mm (Tip: 20 mm) Tip diameter: 2.5 mm (Body: 12 mm) Typical distance from probe tip to dipole centers: 1 mm





## 4.2 Data Acquisition Electronic (DAE) System

Model : DAE3, DAE4  
Construction : Signal amplifier, multiplexer, A/D converter and control logic. Serial optical link for communication with DASY4/5 embedded system (fully remote controlled). Two step probe touch detector for mechanical surface detection and emergency robot stop.  
Measurement Range : -100 to +300 mV (16 bit resolution and two range settings: 4 mV, 400 mV)  
Input Offset Voltage : < 5  $\mu$ V (with auto zero)  
Input Bias Current : < 50 fA  
Dimensions : 60 x 60 x 68 mm

## 4.3 Robot

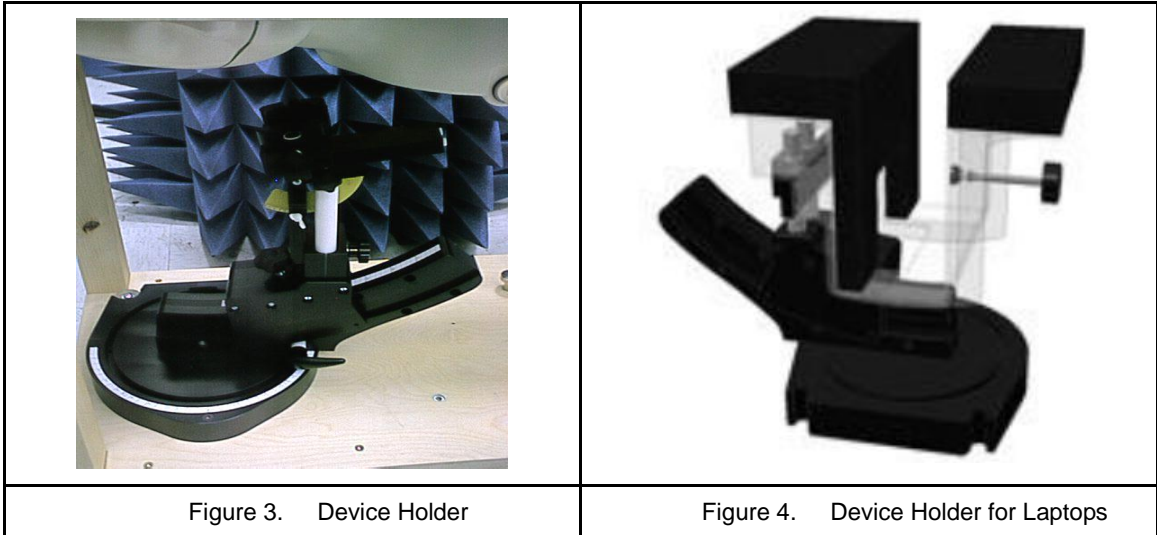
Positioner : Stäubli Unimation Corp. Robot Model: TX90XL  
Repeatability :  $\pm 0.02$  mm  
No. of Axis : 6

## 4.4 Measurement Server

Processor : PC/104 with a 400MHz intel ULV Celeron  
I/O-board : Link to DAE4 (or DAE3)  
16-bit A/D converter for surface detection system  
Digital I/O interface  
Serial link to robot  
Direct emergency stop output for robot

## 4.5 Device Holder

The DASY device holder is constructed of low-loss POM material having the following dielectric parameters: relative permittivity  $\epsilon=3$  and loss tangent  $\delta=0.02$ . The amount of dielectric material has been reduced in the closest vicinity of the device, since measurements have suggested that the influence of the clamp on the test results could thus be lowered.



## 4.6 Oval Flat Phantom - ELI 5.0

The shell corresponds to the specifications of the Specific Anthropomorphic Mannequin (Oval Flat) phantom defined in IEEE 1528-2013, CENELEC 50361 and IEC 62209-2. It enables the dosimetric evaluation of wireless portable device usage as well as body mounted usage at the flat phantom region. A cover prevents evaporation of the liquid. Reference markings on the phantom allow the complete setup of all predefined phantom positions and measurement grids by manually teaching three points with the robot.

Shell Thickness	2 ±0.2 mm
Filling Volume	Approx. 30 liters
Dimensions	190x600x400 mm (HxLxW)
Table 1. Specification of ELI 5.0	

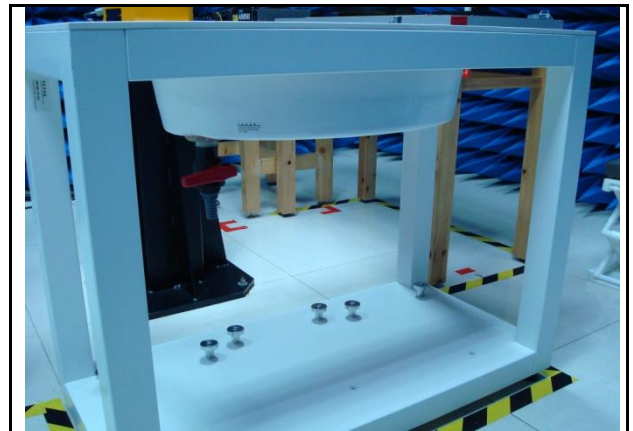


Figure 1. Oval Flat Phantom



## 5. Tissue Simulating Liquids

### IEEE SCC-34/SC-2 in 1528 recommended Tissue Dielectric Parameters

The head tissue dielectric parameters recommended by the IEEE SCC-34/SC-2 in 1528 have been incorporated in the following table. These head parameters are derived from planar layer models simulating the highest expected SAR for the dielectric properties and tissue thickness variations in human head. Other head and body tissue parameters that have not been specified in 1528 are derived from the tissue dielectric parameters computed from the 4-Cole-Cole equation and extrapolated according to the head parameter specified in 1528.

Target Frequency (MHz)	Head		Body	
	$\epsilon_r$	$\sigma$ (S/m)	$\epsilon_r$	$\sigma$ (S/m)
150	52.3	0.76	61.9	0.80
300	45.3	0.87	58.2	0.92
450	43.5	0.87	56.7	0.94
835	41.5	0.90	55.2	0.97
900	41.5	0.97	55.0	1.05
915	41.5	0.98	55.0	1.06
1450	40.5	1.20	54.0	1.30
1610	40.3	1.29	53.8	1.40
1800 - 2000	40.0	1.40	53.3	1.52
2450	39.2	1.80	52.7	1.95
3000	38.5	2.40	52.0	2.73
5800	35.3	5.27	48.2	6.00
( $\epsilon_r$ = relative permittivity, $\sigma$ = conductivity and $\rho = 1000 \text{ kg/m}^3$ )				

Table 2. Tissue dielectric parameters for head and body phantoms



## 5.1 The composition of the tissue simulating liquid

Ingredients (% by weight)	Frequency (MHz)												Frequency (GHz)	
	750		835		1750		1900		2450		2600		5 GHz	
Tissue Type	Head	Body	Head	Body	Head	Body	Head	Body	Head	Body	Head	Body	Head	Body
Water	39.28	51.30	41.45	52.40	54.50	40.20	54.90	40.40	62.70	73.20	60.30	71.40	65.5	78.6
Salt (NaCl)	1.47	1.42	1.45	1.50	0.17	0.49	0.18	0.50	0.50	0.10	0.60	0.20	0.00	0.00
Sugar	58.15	46.18	56.00	45.00	0.00	0.00	0.00	0.00	0.00	0.00	0.00	0.00	0.00	0.00
HEC	1.00	1.00	1.00	1.00	0.00	0.00	0.00	0.00	0.00	0.00	0.00	0.00	0.00	0.00
Bactericide	0.10	0.10	0.10	0.10	0.00	0.00	0.00	0.00	0.00	0.00	0.00	0.00	0.00	0.00
Triton X-100	0.00	0.00	0.00	0.00	0.00	0.00	0.00	0.00	0.00	0.00	0.00	0.00	17.2	10.7
DGBE	0.00	0.00	0.00	0.00	45.33	59.31	44.92	59.10	36.80	26.70	39.10	28.40	0.00	0.00
Diethylene Glycol Mono-hexlether	0.00	0.00	0.00	0.00	0.00	0.00	0.00	0.00	0.00	0.00	0.00	0.00	17.3	10.7
Dielectric Constant	41.88	54.60	42.54	56.10	40.10	53.60	39.90	54.00	39.80	52.50	39.80	52.50	35.1~ 36.2	47.9~ 49.3
Conductivity (S/m)	0.90	0.97	0.91	0.95	1.39	1.49	1.42	1.45	1.88	1.78	1.88	1.78	4.45~ 5.48	5.07~ 6.23



## 5.2 Liquid Parameters

The dielectric parameters of the liquids were verified prior to the SAR evaluation using an 85070C Dielectric Probe Kit and an E5071B Network Analyzer.

Tissue Temp (°C)	Head / Body	Frequency (MHz)	Cond.	Perm.	target Cond.	target Perm.	$\sigma$ (Delta) (%)	$\epsilon_r$ (Delta) (%)	Limit (%)	Date
			$\sigma$	$\epsilon_r$	$\sigma$	$\epsilon_r$				
22.2	Body	2402 MHz	1.96	54.130	1.90	52.76	2.73	2.60	±5	Apr. 04, 2019
22.2	Body	2441 MHz	2.00	53.968	1.94	52.71	3.25	2.39	±5	Apr. 04, 2019
22.2	Body	2480 MHz	2.05	53.843	1.99	52.66	3.01	2.25	±5	Apr. 04, 2019
22.2	Body	2412 MHz	1.97	54.101	1.91	52.75	2.82	2.56	±5	Apr. 04, 2019
22.2	Body	2437 MHz	2.00	53.986	1.94	52.72	3.15	2.40	±5	Apr. 04, 2019
22.2	Body	2462 MHz	2.03	53.892	1.97	52.68	3.25	2.30	±5	Apr. 04, 2019
22.2	Body	2450 MHz	2.02	53.933	1.95	52.70	3.33	2.34	±5	Apr. 04, 2019
22.3	Body	5290 MHz	5.32	50.016	5.40	48.89	-1.65	2.30	±5	Apr. 05, 2019
22.3	Body	5530 MHz	5.69	49.362	5.68	48.57	0.12	1.63	±5	Apr. 05, 2019
22.3	Body	5610 MHz	5.82	49.285	5.78	48.46	0.71	1.70	±5	Apr. 05, 2019
22.3	Body	5690 MHz	5.98	48.919	5.87	48.35	1.77	1.18	±5	Apr. 05, 2019
22.3	Body	5775 MHz	6.10	48.587	5.97	48.23	2.14	0.74	±5	Apr. 05, 2019
22.3	Body	5250 MHz	5.29	50.197	5.36	48.95	-1.33	2.55	±5	Apr. 05, 2019
22.3	Body	5600 MHz	5.81	49.308	5.77	48.47	0.83	1.73	±5	Apr. 05, 2019
22.3	Body	5750 MHz	6.03	48.787	5.94	48.27	1.55	1.07	±5	Apr. 05, 2019

### 5.3 Liquid Depth

According to KDB865664, the depth of tissue-equivalent liquid in a phantom must be  $\geq 15.0$  cm.

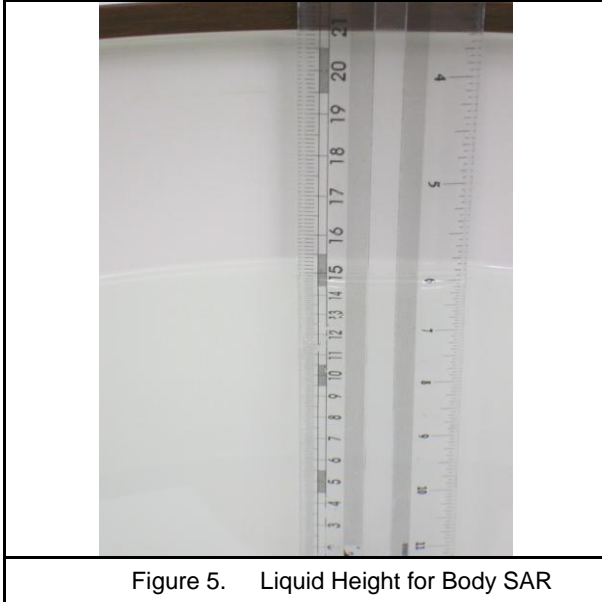


Figure 5. Liquid Height for Body SAR





## 6. SAR Testing with RF Transmitters

### 6.1 WLAN RF Conducted Power

SAR test reduction for 802.11 Wi-Fi transmission mode configurations are considered separately for DSSS and OFDM. An initial test position is determined to reduce the number of tests required for certain exposure configurations with multiple test positions. An initial test configuration is determined for each frequency band and aggregated band according to maximum output power, channel bandwidth, wireless mode configurations and other operating parameters to streamline the measurement requirements. For 2.4 GHz DSSS, either the initial test position or DSSS procedure is applied to reduce the number of SAR tests; these are mutually exclusive. For OFDM, an initial test position is only applicable to next to the ear, UMPC mini-tablet and hotspot mode configurations, which is tested using the initial test configuration to facilitate test reduction. For other exposure conditions with a fixed test position, SAR test reduction is determined using only the initial test configuration.

The multiple test positions require SAR measurements in head, hotspot mode or UMPC mini-tablet configurations may be reduced according to the highest reported SAR determined using the initial test position(s) by applying the DSSS or OFDM SAR measurement procedures in the required wireless mode test configuration(s). The initial test position(s) is measured using the highest measured maximum output power channel in the required wireless mode test configuration(s). When the reported SAR for the initial test position is:

- $\leq 0.4$  W/kg, further SAR measurement is not required for the other test positions in that exposure configuration and wireless mode combination within the frequency band or aggregated band. DSSS and OFDM configurations are considered separately according to the required SAR procedures.
- $> 0.4$  W/kg, SAR is repeated using the same wireless mode test configuration tested in the initial test position to measure the subsequent next closest/smallest test separation distance and maximum coupling test position, on the highest maximum output power channel, until the reported SAR is  $\leq 0.8$  W/kg or all required test positions are tested.
  - For subsequent test positions with equivalent test separation distance or when exposure is dominated by coupling conditions, the position for maximum coupling condition should be tested.
  - When it is unclear, all equivalent conditions must be tested.
- For all positions/configurations tested using the initial test position and subsequent test positions, when the reported SAR is  $> 0.8$  W/kg, measure the SAR for these positions/configurations on the subsequent next highest measured output power channel(s) until the reported SAR is  $\leq 1.2$  W/kg or all required test channels are considered.
  - The additional power measurements required for this step should be limited to those necessary for identifying subsequent highest output power channels to apply the test reduction.
- When the specified maximum output power is the same for both UNII 1 and UNII 2A, begin SAR measurements in UNII 2A with the channel with the highest measured output power. If the reported SAR for UNII 2A is  $\leq 1.2$  W/kg, SAR is not required for UNII 1; otherwise treat the remaining bands separately and test them independently for SAR.
- When the specified maximum output power is different between UNII 1 and UNII 2A, begin SAR with the band that has the higher specified maximum output. If the highest reported SAR for the band with the highest specified power is  $\leq 1.2$  W/kg, testing for the band with the lower specified output power is not required; otherwise test the remaining bands independently for SAR.

To determine the initial test position, Area Scans were performed to determine the position with the Maximum Value of SAR (measured). The position that produced the highest Maximum Value of SAR is considered the worst case position; thus used as the initial test position.



## 6.2 Conducted Power

Band	Data Rate	CH	Frequency (MHz)	Average Power (dBm)	
				MAIN (Chain B)	AUX (Chain A)
IEEE 802.11b	1M	1	2412.0	12.45	12.41
		6	2437.0	12.65	12.61
		11	2462.0	<b>12.73</b>	<b>12.64</b>
		12	2467.0	12.68	12.41
		13	2472.0	12.71	12.61
IEEE 802.11g	6M	1	2412.0	12.69	12.33
		6	2437.0	<b>12.69</b>	12.47
		11	2462.0	12.61	12.46
		12	2467.0	12.39	<b>12.68</b>
		13	2472.0	-7.54	-6.70
IEEE 802.11n 2.4 GHz 20 MHz	6.5M	1	2412.0	<b>12.65</b>	12.37
		6	2442.0	12.62	12.47
		11	2462.0	12.61	12.49
		12	2467.0	12.38	<b>12.63</b>
		13	2472.0	-7.61	-6.70
IEEE 802.11n 2.4 GHz 40 MHz	13.5M	3	2422.0	12.28	11.97
		6	2437.0	<b>12.71</b>	<b>12.47</b>
		9	2452.0	12.31	12.02
		10	2457.0	9.41	10.32
		11	2462.0	2.61	2.34



Band	Data Rate	CH	Frequency (MHz)	Average Power (dBm)	
				MAIN (Chain B)	AUX (Chain A)
IEEE 802.11a	6M	36	5180.0	<b>10.54</b>	<b>10.53</b>
		40	5200.0	10.51	10.52
		44	5220.0	10.46	10.53
		48	5240.0	10.48	10.48
		52	5260.0	10.64	10.80
		56	5280.0	<b>10.75</b>	<b>10.83</b>
		60	5300.0	10.62	10.72
		64	5320.0	10.52	10.52
		100	5500.0	10.48	10.54
		104	5520.0	10.38	10.61
		108	5540.0	10.31	10.53
		112	5560.0	10.42	10.46
		116	5580.0	10.52	<b>10.71</b>
		120	5600.0	<b>10.67</b>	10.61
		124	5620.0	10.41	10.53
		128	5640.0	10.29	10.59
		132	5660.0	10.21	10.61
		136	5680.0	10.34	10.51
		140	5700.0	10.41	10.39
		149	5745.0	<b>10.91</b>	10.92
153	5765.0	10.81	10.83		
157	5785.0	10.89	10.81		
161	5805.0	10.81	10.86		
165	5825.0	10.67	<b>10.95</b>		



Band	Data Rate	CH	Frequency (MHz)	Average Power (dBm)	
				MAIN (Chain B)	AUX (Chain A)
IEEE 802.11n 5 GHz 20 MHz	6.5M	36	5180.0	10.53	10.43
		40	5200.0	<b>10.67</b>	<b>10.63</b>
		44	5220.0	10.48	10.58
		48	5240.0	10.51	10.52
		52	5260.0	10.69	<b>10.70</b>
		56	5280.0	<b>10.79</b>	10.67
		60	5300.0	10.49	10.63
		64	5320.0	10.46	10.48
		100	5500.0	10.47	10.41
		104	5520.0	10.28	10.52
		108	5540.0	10.17	10.67
		112	5560.0	10.36	10.43
		116	5580.0	10.32	10.69
		120	5600.0	<b>10.58</b>	10.62
		124	5620.0	10.28	<b>10.71</b>
		128	5640.0	10.24	10.67
		132	5660.0	10.29	10.65
		136	5680.0	10.25	10.71
		140	5700.0	10.46	10.34
		149	5745.0	10.84	<b>10.71</b>
153	5765.0	10.75	10.68		
157	5785.0	<b>10.91</b>	10.56		
161	5805.0	10.71	10.61		
165	5825.0	10.67	10.69		

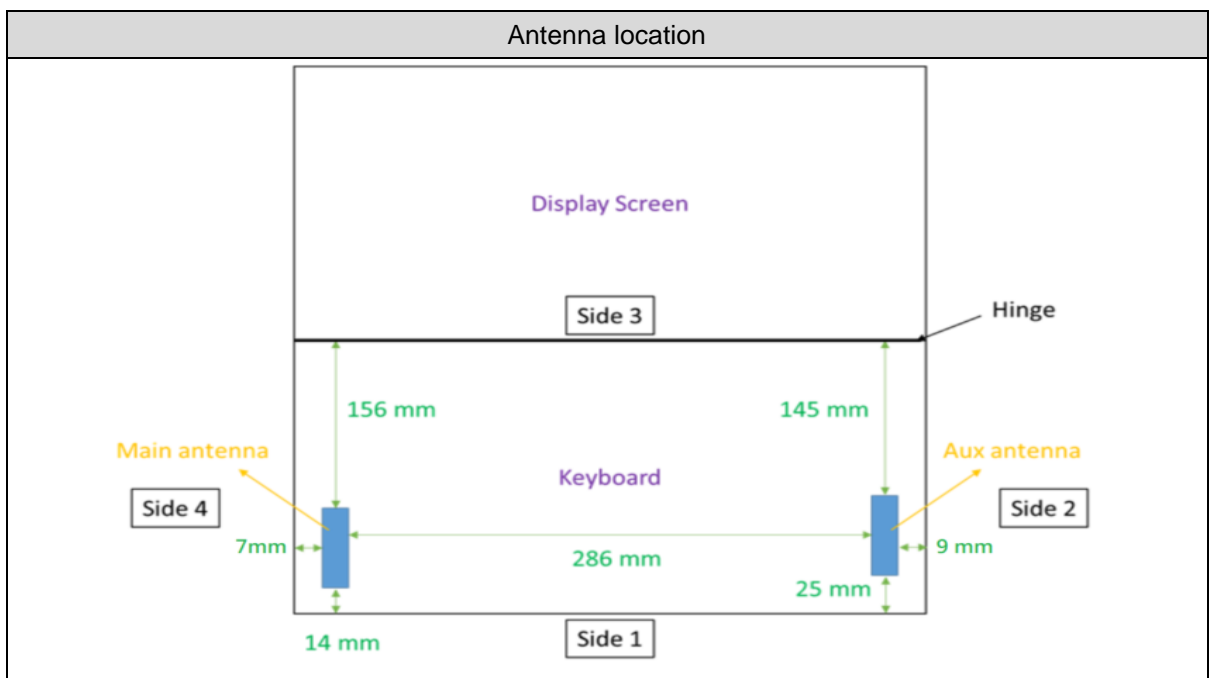


Band	Data Rate	CH	Frequency (MHz)	Average Power (dBm)	
				MAIN (Chain B)	AUX (Chain A)
IEEE 802.11n 5 GHz 40 MHz	13.5M	38	5190.0	10.46	<b>10.56</b>
		46	5230.0	<b>10.58</b>	10.38
		54	5270.0	<b>10.88</b>	10.42
		62	5310.0	10.57	<b>10.43</b>
		102	5510.0	10.41	10.53
		110	5550.0	10.52	10.56
		118	5590.0	10.41	<b>10.62</b>
		126	5630.0	10.52	10.56
		134	5670.0	<b>10.56</b>	10.57
		151	5755.0	10.70	10.75
		159	5795.0	<b>10.71</b>	<b>10.77</b>
IEEE 802.11ac 80 MHz	29.3M	42	5210.0	<b>10.57</b>	<b>10.44</b>
		58	5290.0	<b>10.61</b>	<b>10.11</b>
		106	5530.0	<b>10.43</b>	<b>10.19</b>
		122	5610.0	<b>10.42</b>	<b>10.21</b>
		155	5775.0	<b>10.63</b>	<b>10.17</b>
IEEE 802.11ac 160 MHz	65M	50	5250.0	<b>10.52</b>	<b>10.57</b>
		114	5570.0	<b>10.51</b>	<b>10.43</b>

Band	CH	Frequency (MHz)	Average Power (dBm)	
			MAIN (Chain B)	AUX (Chain A)
Bluetooth BR	0	2402.0	---	9.48
	39	2441.0	---	<b>10.06</b>
GFSK	78	2480.0	---	10.05
	0	2402.0	---	5.67
Bluetooth EDR	39	2441.0	---	<b>5.76</b>
	78	2480.0	---	5.17

Band	CH	Frequency (MHz)	Bandwidth	Average Power (dBm)	
				MAIN (Chain B)	AUX (Chain A)
Bluetooth LE	0	2402.0	1M	---	5.45
	19	2440.0		---	<b>5.49</b>
	39	2480.0		---	4.98

### 6.3 Antenna location





## 6.4 Standalone SAR Test Exclusion Calculation

We did not simplify any test configurations, except for following KDB 248227, so there was no provide results of the test exclusion in KDB 447498 D01.

## 6.5 Simultaneous Transmitting Evaluate

Simultaneous transmission configurations as below:

Condition	Band				
	WLAN 2.4 GHz ANT-Main	WLAN 2.4 GHz ANT-AUX	WLAN 5 GHz ANT-Main	WLAN 5 GHz ANT-AUX	Bluetooth ANT-AUX
1	V	---	---	---	V
2	V	V	---	---	---
3	---	---	V	---	V
4	---	---	V	V	---
5	---	---	V	V	V

### 6.5.1 Sum of 1-g SAR of all simultaneously transmitting

When the sum of 1-g SAR of all simultaneously transmitting antennas in an operating mode and exposure condition combination is within the SAR limit, SAR test exclusion applies to that simultaneous transmission configuration.

Sum of 1-g SAR of summary as below:

Phantom Position		Spacing (mm)	ASSY	2.4 GHz WLAN ANT-Main (1)		2.4 GHz WLAN ANT-AUX (2)	
				Band	SAR <sub>1g</sub> (W/Kg)	Band	SAR <sub>1g</sub> (W/Kg)
Flat	Bottom of laptop	0	N/A	IEEE 802.11b	1.10	IEEE 802.11b	0.42

Phantom Position		Spacing (mm)	ASSY	5 GHz WLAN ANT-Main (3)		5 GHz WLAN ANT-AUX (4)		Bluetooth ANT-AUX (5)	
				Band	SAR <sub>1g</sub> (W/Kg)	Band	SAR <sub>1g</sub> (W/Kg)	Band	SAR <sub>1g</sub> (W/Kg)
Flat	Bottom of laptop	0	N/A	IEEE 802.11ac 80 MHz	1.00	IEEE 802.11ac 80 MHz	1.11	Bluetooth	0.18

Phantom Position		Spacing (mm)	ASSY	(1) + (5)	(1) + (2)	(3) + (5)	(3) + (4)	(3) + (4) + (5)
				$\sum$ SAR <sub>1g</sub> (W/Kg)	$\sum$ SAR <sub>1g</sub> (W/Kg)	$\sum$ SAR <sub>1g</sub> (W/Kg)	$\sum$ SAR <sub>1g</sub> (W/Kg)	$\sum$ SAR <sub>1g</sub> (W/Kg)
Flat	Bottom of laptop	0	N/A	1.28	1.52	1.16	2.11	2.29



### 6.5.2 SAR to peak location separation ratio (SPLSR)

When the sum of SAR is larger than the limit, SAR test exclusion is determined by the SAR to peak location separation ratio. The ratio is determined by  $(SAR_1 + SAR_2)^{1.5}/R_i$ , rounded to two decimal digits, and must be  $\leq 0.04$  for all antenna pairs in the configuration to qualify for 1-g SAR test exclusion.

#### 5 GHz Main + 5 GHz AUX

Antenna	Plot.	Frequency (GHz)	SAR <sub>1g</sub> (W/Kg)	∑ SAR <sub>1g</sub> (W/Kg)	Antenna pair (mm)	Peak location separation ratio
5 GHz Main	5	5.29	0.914	1.82	302.4	0.01
5 GHz AUX	6	5.29	0.901			

Maxima and position w.r.t. Grid Reference Point		associated 1g averages
Zoom Scan (D:\Test Date\2019\4\19-0207-SER_ASUS_IntelI9560 (X432)\FCC\DA52\5g\5_IEEE 802.11ac 80 CH58_MCS0_Bottom of laptop_0mm_ant Main.da53:0/Flat)		0.91 W/kg
Max. 1 at (-59.20, -160.20, -0.80) mm		
Zoom Scan (D:\Test Date\2019\4\19-0207-SER_ASUS_IntelI9560 (X432)\FCC\DA52\5g\6_IEEE 802.11ac 80 CH58_MCS0_Bottom of laptop_0mm_ant AUX.da53:0/Flat)		0.90 W/kg
Max. 2 at (-74.80, 141.80, -1.10) mm		
Distances and Separation Ratios		
Max. 1 - Max. 2		Distance [mm]: 302.40 / Separation ratio [W/kg/mm]: 0.01

#### 5 GHz Main + 5 GHz AUX + Bluetooth AUX

Antenna	Plot.	Frequency (GHz)	SAR <sub>1g</sub> (W/Kg)	∑ SAR <sub>1g</sub> (W/Kg)	Antenna pair (mm)	Peak location separation ratio
5 GHz Main	5	5.29	0.914	1.911	302.4	0.01
5 GHz AUX	6	5.29	0.901			
Bluetooth AUX	16	2.441	0.096			

#### 5 GHz Main + 5GHz AUX

Maxima and position w.r.t. Grid Reference Point		associated 1g averages
Zoom Scan (D:\Test Date\2019\4\19-0207-SER_ASUS_IntelI9560 (X432)\FCC\DA52\5g\5_IEEE 802.11ac 80 CH58_MCS0_Bottom of laptop_0mm_ant Main.da53:0/Flat)		0.91 W/kg
Max. 1 at (-59.20, -160.20, -0.80) mm		
Zoom Scan (D:\Test Date\2019\4\19-0207-SER_ASUS_IntelI9560 (X432)\FCC\DA52\5g\6_IEEE 802.11ac 80 CH58_MCS0_Bottom of laptop_0mm_ant AUX.da53:0/Flat)		0.90 W/kg
Max. 2 at (-74.80, 141.80, -1.10) mm		
Distances and Separation Ratios		
Max. 1 - Max. 2		Distance [mm]: 302.40 / Separation ratio [W/kg/mm]: 0.01

#### 5 GHz Main + Bluetooth AUX

Maxima and position w.r.t. Grid Reference Point		associated 1g averages
Zoom Scan (D:\Test Date\2019\4\19-0207-SER_ASUS_IntelI9560 (X432)\FCC\DA52\5g\5_IEEE 802.11ac 80 CH58_MCS0_Bottom of laptop_0mm_ant Main.da53:0/Flat)		0.91 W/kg
Max. 1 at (-59.20, -160.20, -0.80) mm		
Zoom Scan (D:\Test Date\2019\4\19-0207-SER_ASUS_IntelI9560 (X432)\FCC\DA52\2.4\15_Bluetooth CH0_1M_Bottom of laptop_0mm_ant A_Aux.da53:0/Flat)		0.10 W/kg
Max. 2 at (-75.60, 140.00, -0.77) mm		
Distances and Separation Ratios		
Max. 1 - Max. 2		Distance [mm]: 300.65 / Separation ratio [W/kg/mm]: 0.00



## 7. System Verification and Validation

### 7.1 Symmetric Dipoles for System Verification

Construction	Symmetrical dipole with 1/4 balun enables measurement of feed point impedance with NWA matched for use near flat phantoms filled with head simulating solutions Includes distance holder and tripod adaptor Calibration Calibrated SAR value for specified position and input power at the flat phantom in head simulating solutions.
Return Loss	> 20 dB at specified verification position
Options	Dipoles for other frequencies or solutions and other calibration conditions are available upon request

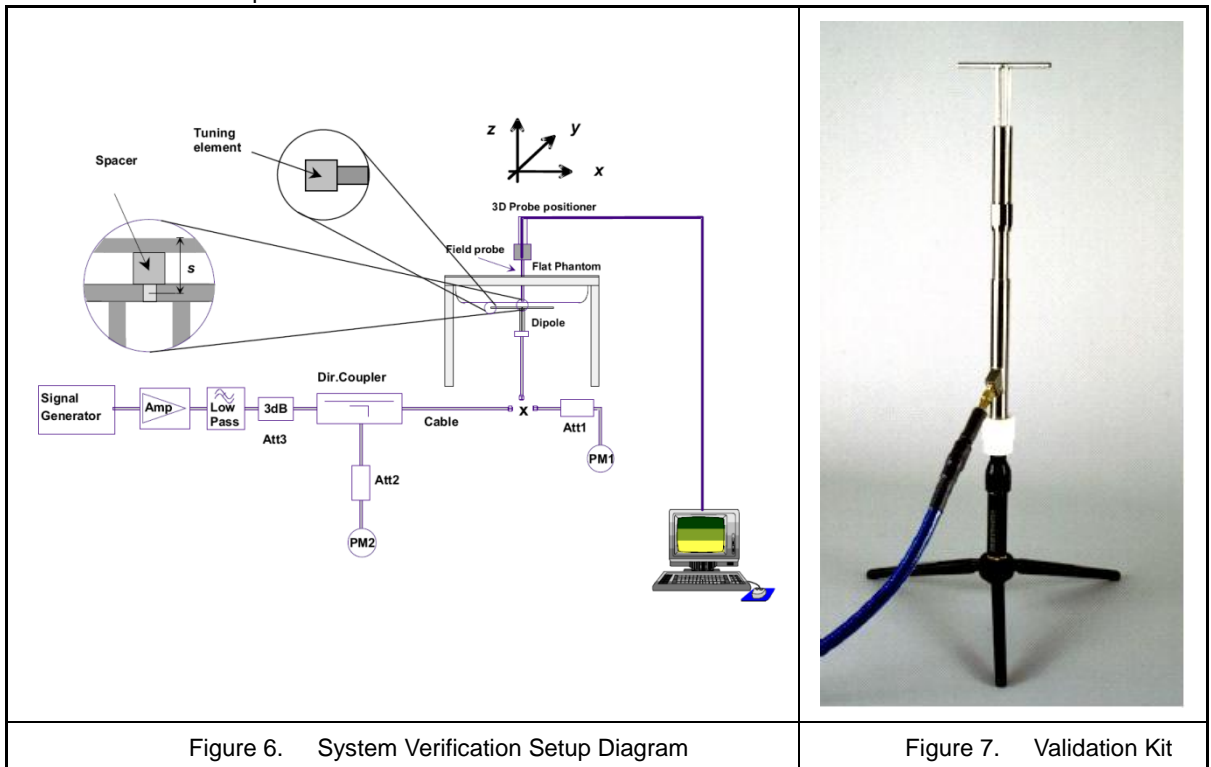


Figure 6. System Verification Setup Diagram



Figure 7. Validation Kit



## 7.2 Verification Summary

Prior to the assessment, the system validation kit was used to test whether the system was operating within its specifications of  $\pm 10\%$ . The measured SAR will be normalized to 1 W input power. The verification was performed at 2450, 5250, 5500 and 5750 MHz.

Mixture Type	Frequency (MHz)	Power	Probe Model / Serial No.	Dipole Model / Serial No.	SAR <sub>1g</sub> (W/Kg)	SAR <sub>10g</sub> (W/Kg)	1 W Target		Difference percentage		Date
							SAR <sub>1g</sub> [W/kg]	SAR <sub>10g</sub> [W/kg]	1 g	10 g	
Body	2450	250 mW	EX3DV4-SN3977	D2450V2-SN735	13	5.95	50.20	23.70	3.5 %	0.4 %	Apr. 04, 2019
		Normalize to 1 Watt			52.00	23.80					
Body	5250	100 mW	EX3DV4-SN3977	D5250V2-SN1203	7.34	2.08	74.90	20.90	-2.0 %	-0.5 %	Apr. 05, 2019
		Normalize to 1 Watt			73.40	20.80					
Body	5600	100 mW	EX3DV4-SN3977	D5600V2-SN1203	7.88	2.19	79.70	22.30	-1.1 %	-1.8 %	Apr. 05, 2019
		Normalize to 1 Watt			78.80	21.90					
Body	5750	100 mW	EX3DV4-SN3977	D5750V2-SN1203	7.62	2.11	76.80	21.30	-0.8 %	-0.9 %	Apr. 05, 2019
		Normalize to 1 Watt			76.20	21.10					



## 8. Test Equipment List

Manufacturer	Name of Equipment	Type/Model	Serial Number	Calibration	
				Cal. Date	Cal.Period
SPEAG	2450 MHz System Validation Kit	D2450V2	735	12/11/2018	1 year
SPEAG	5 GHz System Validation Kit	D5GHzV2	1203	12/13/2018	1 year
SPEAG	Dosimetric E-Field Probe	EX3DV4	3977	08/30/2018	1 year
SPEAG	Data Acquisition Electronics	DAE4	779	08/14/2018	1 year
SPEAG	Measurement Server	SE UMS 011 AA	1025	NCR	
SPEAG	Device Holder	N/A	N/A	NCR	
SPEAG	Phantom	ELI V5.0	1133	NCR	
SPEAG	Robot	Staubli TX90XL	F16/54FTA1/A/01	NCR	
SPEAG	Software	DASY52 V52.10 (0)	N/A	NCR	
SPEAG	Software	SEMCAD X V14.6.10(7331)	N/A	NCR	
Agilent	ENA Series Network Analyzer	E5071B	MY42404655	04/17/2018	1 year
Agilent	Dielectric Probe Kit	85070C	US99360094	NCR	
HILA	Digital Thermometer	TM-906	GF-006	05/22/2018	1 year
Agilent	Power Sensor	8481H	3318A20779	06/12/2018	1 year
Agilent	Power Meter	EDM Series E4418B	GB40206143	06/12/2018	1 year
Agilent	Signal Generator	E8257D	MY44320425	03/05/2019	1 year
Agilent	Dual Directional Coupler	778D	50334	NCR	
Woken	Dual Directional Coupler	0100AZ20200801O	11012409517	NCR	
Mini-Circuits	Power Amplifier	EMC014225P	980292	NCR	
Mini-Circuits	Power Amplifier	EMC2830P	980293	NCR	
Aisi	Attenuator	IEAT 3dB	N/A	NCR	

Table 1. Test Equipment List



## 9. Measurement Uncertainty

Item	Uncertainty Component	Uncertainty Value	Prob. Dist	Div.	$c_i$ (1 g)	$c_i$ (10 g)	Std. Unc. (1-g)	Std. Unc. (10-g)	$v_i$ or $v_{eff}$
Measurement System									
u1	Probe Calibration ( $k=1$ )	±6.0 %	Normal	1	1	1	±6.0 %	±6.0 %	∞
u2	Axial Isotropy	±4.7 %	Rectangular	$\sqrt{3}$	0.7	0.7	±1.9 %	±1.9 %	∞
u3	Hemispherical Isotropy	±9.6 %	Rectangular	$\sqrt{3}$	0.7	0.7	±3.9 %	±3.9 %	
u4	Boundary Effect	±1.0 %	Rectangular	$\sqrt{3}$	1	1	±0.6 %	±0.6 %	∞
u5	Linearity	±4.7 %	Rectangular	$\sqrt{3}$	1	1	±2.7 %	±2.7 %	∞
u6	System Detection Limit	±1.0 %	Rectangular	$\sqrt{3}$	1	1	±0.6 %	±0.6 %	∞
u7	Readout Electronics	±0.3 %	Normal	1	1	1	±0.3 %	±0.3 %	∞
u8	Response Time	±0.8 %	Rectangular	$\sqrt{3}$	1	1	±0.5 %	±0.5 %	∞
u9	Integration Time	±1.9 %	Rectangular	$\sqrt{3}$	1	1	±1.1 %	±1.1 %	∞
u10	RF Ambient Conditions	±3.0 %	Rectangular	$\sqrt{3}$	1	1	±1.7 %	±1.7 %	∞
u11	RF Ambient Reflections	±3.0 %	Rectangular	$\sqrt{3}$	1	1	±1.7 %	±1.7 %	∞
u12	Probe Positioner Mechanical Tolerance	±0.4 %	Rectangular	$\sqrt{3}$	1	1	±0.2 %	±0.2 %	∞
u13	Probe Positioning with respect to Phantom Shell	±2.9 %	Rectangular	$\sqrt{3}$	1	1	±1.7 %	±1.7 %	∞
u14	Extrapolation, interpolation and integration Algorithms for Max. SAR Evaluation	±1.0 %	Rectangular	$\sqrt{3}$	1	1	±0.6 %	±0.6 %	∞
Test sample Related									
u15	Test sample Positioning	±2.9 %	Normal	1	1	1	±2.9 %	±2.9 %	89
u16	Device Holder Uncertainty	±3.6 %	Normal	1	1	1	±3.6 %	±3.6 %	5
u17	Output Power Variation - SAR drift measurement	±5.0 %	Rectangular	$\sqrt{3}$	1	1	±2.9 %	±2.9 %	∞
Phantom and Tissue Parameters									
u18	Phantom Uncertainty ( shape and thickness tolerances)	±4.0 %	Rectangular	$\sqrt{3}$	1	1	±2.3 %	±2.3 %	∞
u19	Liquid Conductivity - deviation from target values	±5.0 %	Rectangular	$\sqrt{3}$	0.64	0.43	±1.8 %	±1.2 %	∞
u20	Liquid Conductivity - measurement uncertainty	±2.5 %	Normal	1	0.64	0.43	±1.6 %	±1.08 %	69
u21	Liquid Permittivity - deviation from target values	±5.0 %	Rectangular	$\sqrt{3}$	0.6	0.49	±1.7 %	±1.4 %	∞
u22	Liquid Permittivity - measurement uncertainty	±2.5 %	Normal	1	0.6	0.49	±1.5 %	±1.23 %	69
Combined standard uncertainty			RSS				±10.94 %	±10.71 %	380
Expanded uncertainty (95 % CONFIDENCE LEVEL )			$k=2$				±21.88 %	±21.41 %	

Table 2. Uncertainty Budget for frequency range 300 MHz to 3 GHz

Item	Uncertainty Component	Uncertainty Value	Prob. Dist	Div.	$c_i$ (1 g)	$c_i$ (10 g)	Std. Unc. (1-g)	Std. Unc. (10-g)	$v_i$ or $v_{eff}$
Measurement System									
u1	Probe Calibration ( $k=1$ )	±6.5 %	Normal	1	1	1	±6.5 %	±6.5 %	∞
u2	Axial Isotropy	±4.7 %	Rectangular	$\sqrt{3}$	0.7	0.7	±1.9 %	±1.9 %	∞
u3	Hemispherical Isotropy	±9.6 %	Rectangular	$\sqrt{3}$	0.7	0.7	±3.9 %	±3.9 %	
u4	Boundary Effect	±2.0 %	Rectangular	$\sqrt{3}$	1	1	±1.2 %	±1.2 %	∞
u5	Linearity	±4.7 %	Rectangular	$\sqrt{3}$	1	1	±2.7 %	±2.7 %	∞
u6	System Detection Limit	±1.0 %	Rectangular	$\sqrt{3}$	1	1	±0.6 %	±0.6 %	∞
u7	Readout Electronics	±0.0 %	Normal	1	1	1	±0.0 %	±0.0 %	∞
u8	Response Time	±0.8 %	Rectangular	$\sqrt{3}$	1	1	±0.5 %	±0.5 %	∞
u9	Integration Time	±2.8 %	Rectangular	$\sqrt{3}$	1	1	±2.8 %	±2.8 %	∞
u10	RF Ambient Conditions	±3.0 %	Rectangular	$\sqrt{3}$	1	1	±1.7 %	±1.7 %	∞
u11	RF Ambient Reflections	±3.0 %	Rectangular	$\sqrt{3}$	1	1	±1.7 %	±1.7 %	∞
u12	Probe Positioner Mechanical Tolerance	±0.7 %	Rectangular	$\sqrt{3}$	1	1	±0.7 %	±0.7 %	∞
u13	Probe Positioning with respect to Phantom Shell	±9.9 %	Rectangular	$\sqrt{3}$	1	1	±5.7 %	±5.7 %	∞
u14	Extrapolation, interpolation and integration Algorithms for Max. SAR Evaluation	±3.0 %	Rectangular	$\sqrt{3}$	1	1	±1.7 %	±1.7 %	∞
Test sample Related									
u15	Test sample Positioning	±2.9 %	Normal	1	1	1	±2.9 %	±2.9 %	89
u16	Device Holder Uncertainty	±3.6 %	Normal	1	1	1	±3.6 %	±3.6 %	5
u17	Output Power Variation - SAR drift measurement	±5.0 %	Rectangular	$\sqrt{3}$	1	1	±2.9 %	±2.9 %	∞
Phantom and Tissue Parameters									
u18	Phantom Uncertainty ( shape and thickness tolerances)	±4.0 %	Rectangular	$\sqrt{3}$	1	1	±2.3 %	±2.3 %	∞
u19	Liquid Conductivity - deviation from target values	±5.0 %	Rectangular	$\sqrt{3}$	0.64	0.43	±1.8 %	±1.2 %	∞
u20	Liquid Conductivity - measurement uncertainty	±2.5 %	Normal	1	0.64	0.43	±1.6 %	±1.08 %	69
u21	Liquid Permittivity - deviation from target values	±5.0 %	Rectangular	$\sqrt{3}$	0.6	0.49	±1.7 %	±1.4 %	∞
u22	Liquid Permittivity - measurement uncertainty	±2.5 %	Normal	1	0.6	0.49	±1.5 %	±1.23 %	69
Combined standard uncertainty			RSS				±12.68 %	±12.48 %	700
Expanded uncertainty (95 % CONFIDENCE LEVEL )			$k=2$				±25.37 %	±24.97 %	

Table 3. Uncertainty Budget for frequency range 3 GHz to 6 GHz



## 10. **Measurement Procedure**

The measurement procedures are as follows:

1. For WLAN function, engineering testing software installed on DUTs can provide continuous transmitting signal.
2. Measure output power through RF cable and power meter
3. Set scan area, grid size and other setting on the DASY software
4. Find out the largest SAR result on these testing positions of each band
5. Measure SAR results for other channels in worst SAR testing position if the SAR of highest power channel is larger than 0.8 W/kg

According to the test standard, the recommended procedure for assessing the peak spatial-average SAR value consists of the following steps:

1. Power reference measurement
2. Area scan
3. Zoom scan
4. Power drift measurement

### 10.1 **Spatial Peak SAR Evaluation**

The procedure for spatial peak SAR evaluation has been implemented according to the test standard. It can be conducted for 1 g and 10 g, as well as for user-specific masses. The DASY software includes all numerical procedures necessary to evaluate the spatial peak SAR value.

The base for the evaluation is a "cube" measurement. The measured volume must include the 1 g and 10 g cubes with the highest averaged SAR values. For that purpose, the center of the measured volume is aligned to the interpolated peak SAR value of a previously performed area scan.

The entire evaluation of the spatial peak values is performed within the post-processing engine (SEMCAD). The system always gives the maximum values for the 1 g and 10 g cubes. The algorithm to find the cube with highest averaged SAR is divided into the following stages

1. Extraction of the measured data (grid and values) from the Zoom Scan
2. Calculation of the SAR value at every measurement point based on all stored data (A/D values and measurement parameters)
3. Generation of a high-resolution mesh within the measured volume
4. Interpolation of all measured values from the measurement grid to the high-resolution grid
5. Extrapolation of the entire 3-D field distribution to the phantom surface over the distance from sensor to surface
6. Calculation of the averaged SAR within masses of 1 g and 10 g



## 10.2 Area & Zoom Scan Procedures

First Area Scan is used to locate the approximate location(s) of the local peak SAR value(s). The measurement grid within an Area Scan is defined by the grid extent, grid step size and grid offset. Next, in order to determine the EM field distribution in a three-dimensional spatial extension, Zoom Scan is required. The Zoom Scan measures points and step size follow as below. The Zoom Scan is performed around the highest E-field value to determine the averaged SAR-distribution over 10 g.

Grid Type	Frequency		Step size (mm)			X*Y*Z (Point)	Cube size			Step size		
			X	Y	Z		X	Y	Z	X	Y	Z
uniform grid	≤ 3 GHz	≤ 2 GHz	≤ 8	≤ 8	≤ 5	5*5*7	32	32	30	8	8	5
		2 G – 3 G	≤ 5	≤ 5	≤ 5	7*7*7	30	30	30	5	5	5
	3 – 6 GHz	3 – 4 GHz	≤ 5	≤ 5	≤ 4	7*7*8	30	30	28	5	5	4
		4 – 5 GHz	≤ 4	≤ 4	≤ 3	8*8*10	28	28	27	4	4	3
		5 – 6 GHz	≤ 4	≤ 4	≤ 1.4	8*8*12	24	24	22	4	4	1.4

(Our measure settings are refer KDB Publication 865664 D01v01r04)

## 10.3 Volume Scan Procedures

The volume scan is used for assess overlapping SAR distributions for antennas transmitting in different frequency bands. It is equivalent to an oversized zoom scan used in standalone measurements. The measurement volume will be used to enclose all the simultaneous transmitting antennas. For antennas transmitting simultaneously in different frequency bands, the volume scan is measured separately in each frequency band. In order to sum correctly to compute the 1 g aggregate SAR, the DUT remain in the same test position for all measurements and all volume scan use the same spatial resolution and grid spacing. When all volume scan were completed, the software, SEMCAD postprocessor can combine and subsequently superpose these measurement data to calculating the multiband SAR.

## 10.4 Power Drift Monitoring

All SAR testing is under the DUT install full charged battery and transmit maximum output power. In DASYS measurement software, the power reference measurement and power drift measurement procedures are used for monitoring the power drift of DUT during SAR test. Both these procedures measure the field at a specified reference position before and after the SAR testing. The software will calculate the field difference in dB. If the power drifts more than 5 %, the SAR will be retested.



## 11. SAR Test Results Summary

Note:

1. When the reported SAR of the highest measured maximum output power channel is  $\leq 0.8$  W/kg, no further SAR testing is required for 802.11b DSSS.
2. When the highest reported SAR for DSSS is adjusted by the ratio of OFDM to DSSS specified maximum output power and the adjusted SAR is  $\leq 1.2$  W/kg, SAR is not required for 2.4G OFDM configuration.
3. SAR for the initial test configuration is measured using the highest maximum output power channel.
4. When the same maximum output power is specified for both bands, begin SAR measurement in U-NII-2A band by applying the OFDM SAR requirements. If the highest reported SAR for a test configuration is  $\leq 1.2$  W/kg, SAR is not required for U-NII-1 band for that configuration (802.11 mode and exposure condition); otherwise, each band is tested independently for SAR.

### 11.1 Body SAR Measurement

Measurement Results													
Index	Band	Mode	Frequency		Data Rate	Test Position	Spacing (mm)	SAR <sub>1g</sub> (W/Kg)	Burst Avg Power	Max tune-up	Duty Cycle %	Reported SAR <sub>1g</sub>	Note
			Ch.	MHz									
#1	WLAN 2.4 GHz	802.11b	6	2437.0	1 Mbps	Bottom of laptop	0	0.943	12.65	13.00	100	1.02	ANT-Main
#3	WLAN 2.4 GHz	802.11b	1	2412.0	1 Mbps	Bottom of laptop	0	0.879	12.45	13.00	100	1.00	ANT-Main
#4	WLAN 2.4 GHz	802.11b	11	2462.0	1 Mbps	Bottom of laptop	0	1.03	12.73	13.00	100	<b>1.10</b>	ANT-Main
#2	WLAN 2.4 GHz	802.11b	6	2437.0	1 Mbps	Bottom of laptop	0	0.383	12.61	13.00	100	<b>0.42</b>	ANT-AUX
#5	WLAN 5 GHz	802.11ac 80 MHz	58	5290.0	58.6 Mbps	Bottom of laptop	0	0.914	10.61	11.00	100	<b>1.00</b>	ANT-Main
#7	WLAN 5 GHz	802.11ac 80 MHz	106	5530.0	58.6 Mbps	Bottom of laptop	0	0.666	10.43	11.00	100	0.76	ANT-Main
#9	WLAN 5 GHz	802.11ac 80 MHz	122	5610.0	58.6 Mbps	Bottom of laptop	0	0.568	10.42	11.00	100	0.65	ANT-Main
#11	WLAN 5 GHz	802.11ac 80 MHz	138	5690.0	58.6 Mbps	Bottom of laptop	0	0.519	10.54	11.00	100	0.58	ANT-Main
#13	WLAN 5 GHz	802.11ac 80 MHz	155	5775.0	58.6 Mbps	Bottom of laptop	0	0.429	10.63	11.00	100	0.47	ANT-Main
#6	WLAN 5 GHz	802.11ac 80 MHz	58	5290.0	58.6 Mbps	Bottom of laptop	0	0.901	10.11	11.00	100	<b>1.11</b>	ANT-AUX
#8	WLAN 5 GHz	802.11ac 80 MHz	106	5530.0	58.6 Mbps	Bottom of laptop	0	0.719	10.19	11.00	100	0.87	ANT-AUX
#10	WLAN 5 GHz	802.11ac 80 MHz	122	5610.0	58.6 Mbps	Bottom of laptop	0	0.61	10.21	11.00	100	0.73	ANT-AUX
#12	WLAN 5 GHz	802.11ac 80 MHz	138	5690.0	58.6 Mbps	Bottom of laptop	0	0.55	10.38	11.00	100	0.63	ANT-AUX
#14	WLAN 5 GHz	802.11ac 80 MHz	155	5775.0	58.6 Mbps	Bottom of laptop	0	0.493	10.17	11.00	100	0.60	ANT-AUX





Measurement Results													
Index	Band	Mode	Frequency		Data Rate	Test Position	Spacing (mm)	SAR <sub>1g</sub> (W/Kg)	Burst Avg Power	Max tune-up	Duty Cycle %	Reported SAR <sub>1g</sub>	Note
			Ch.	MHz									
#15	Bluetooth	---	0	2402.0	---	Bottom of laptop	0	0.096	9.48	11.00	77	<b>0.18</b>	ANT-AUX
#16	Bluetooth	---	39	2441.0	---	Bottom of laptop	0	0.096	10.06	11.00	77	0.16	ANT-AUX
#17	Bluetooth	---	78	2480.0	---	Bottom of laptop	0	0.075	10.05	11.00	77	0.12	ANT-AUX

## 11.2 SAR Variability Measurement

Measurement Results											
Index	Band	Mode	Frequency		Data Rate	Test Position	Spacing (mm)	Note	Original SAR <sub>1g</sub> (W/Kg)	First SAR <sub>1g</sub> (W/Kg)	Ratio SAR <sub>1g</sub>
			Ch.	MHz							
#18	WLAN 2.4 GHz	802.11b	11	2462.0	1 Mbps	Bottom of laptop	0	original #4_once	1.03	0.965	1.07
#19	WLAN 5 GHz	802.11ac 80 MHz	58	5290.0	58.6 Mbps	Bottom of laptop	0	original #5_once	0.914	0.901	1.01



### 11.3 SAR Exposure Limit

Human Exposure	Population Uncontrolled Exposure (W/kg)	Occupational Controlled Exposure (W/kg)
Spatial Peak SAR* (head or Body)	1.60	8.00
Spatial Peak SAR** (Whole Body)	0.08	0.40
Spatial Peak SAR*** (Hands / Feet / Ankle / Wrist)	4.00	20.00

Table 4. Safety Limits for Controlled / Uncontrolled Environment Exposure

**Notes :**

- \* The Spatial Peak value of the SAR averaged over any 1 gram of tissue. ( defined as a tissue volume in the shape of a cube ) and over the appropriate averaging time.
- \*\* The Spatial Average value of the SAR averaged over the whole – body.
- \*\*\* The Spatial Peak value of the SAR averaged over any 10 grams of tissue. ( defined as a tissue volume in the shape of a cube ) and over the appropriate averaging time.

**Population / Uncontrolled Environments :** are defined as locations where there is the exposure of individuals who have no knowledge or control of their exposure.

**Occupational / Controlled Environments :** are defined as locations where there is exposure that may be incurred by persons who are aware of the potential for exposure, (i.e. as a result of employment or occupation).



## 12. References

- [1] Std. C95.1-1999, "American National Standard safety levels with respect to human exposure to radio frequency electromagnetic fields, 300KHz to 100GHz", New York.
- [2] NCRP, National Council on Radiation Protection and Measurements, "Biological Effects and Exposure Criteria for Radio frequency Electromagnetic Fields", NCRP report NO. 86, 1986.
- [3] T. Schmid, O. Egger, and N. Kuster, "Automatic E-field scanning system for dosimetric assessments", IEEE Transactions on Microwave Theory and Techniques, vol. 44, pp, 105-113, Jan. 1996.
- [4] K. Pokovi<sup>c</sup>, T. Schmid, and N. Kuster, "Robust setup for precise calibration of E-field probes in tissue simulating liquids at mobile communications frequency", in ICECOM'97, Dubrovnik, October 15-17, 1997, pp.120-124.
- [5] K. Pokovi<sup>c</sup>, T. Schmid, and N. Kuster, "E-field probe with improved isotropy in brain simulating liquids", in Proceedings of the ELMAR, Zadar, Croatia, 23-25 June, 1996, pp.172-175.
- [6] N. Kuster, and Q. Balzano, "Energy absorption mechanism by biological bodies in the near field of dipole antennas above 300MHz", IEEE Transaction on Vehicular Technology, vol. 41, no. 1, Feb. 1992, pp. 17-23.
- [7] Robert J. Renka, "Multivariate Interpolation Of Large Sets Of Scattered Data", University of North Texas ACM Transactions on Mathematical Software, vol. 14, no. 2, June 1988 , pp. 139-148.
- [8] N. Kuster, R. Kastle, T. Schmid, Dosimetric evaluation of mobile communications equipment with known precision, IEEE Transaction on Communications, vol. E80-B, no. 5, May 1997, pp. 645-652.
- [9] Std. C95.3-1991, "IEEE Recommended Practice for the Measurement of Potentially Hazardous Electromagnetic Fields – RF and Microwave, New York: IEEE, Aug. 1992.
- [10] CENELEC CLC/SC111B, European Prestandard (prENV 50166-2), Human Exposure to Electromagnetic Fields High-frequency: 10KHz-300GHz, Jan. 1995.
- [11] IEEE Std 1528™-2013 - IEEE Recommended Practice for Determining the Peak Spatial-Average Specific Absorption Rate (SAR) in the Human Head From Wireless Communications Devices: Measurement Techniques



## Appendix A - System Performance Check

Test Laboratory: A Test Lab Techno Corp.

Date/Time: 2019/4/4 PM 12:41:14

System Performance Check at 2450MHz\_20190404\_Body

**DUT: Dipole 2450 MHz; Type: D2450V2; Serial: D2450V2 - SN:735**

Communication System: UID 0, CW (0); Frequency: 2450 MHz; Duty Cycle: 1:1

Medium parameters used:  $f = 2450$  MHz;  $\sigma = 2.015$  S/m;  $\epsilon_r = 53.933$ ;  $\rho = 1000$  kg/m<sup>3</sup>

Phantom section: Flat Section

Measurement Standard: DASYS (IEEE/IEC/ANSI C63.19-2007)

DASY5.2 Configuration:

- Area Scan setting - Find Secondary Maximum Within: 2.0dB and with a peak SAR value greater than 0.5 W/Kg
- Probe: EX3DV4 - SN3977; ConvF(7.56, 7.56, 7.56); Calibrated: 2018/8/30
- Sensor-Surface: 1.4mm (Mechanical Surface Detection)
- Electronics: DAE4 Sn779; Calibrated: 2018/8/14
- Phantom: ELI V5.0 (20deg probe tilt); Type: QD OVA 002 AA; Serial: 1133
- Measurement SW: DASYS2, Version 52.10 (2); SEMCAD X Version 14.6.10 (7331)

**Area Scan (81x81x1):** Interpolated grid: dx=1.200 mm, dy=1.200 mm

Maximum value of SAR (interpolated) = 21.5 W/kg

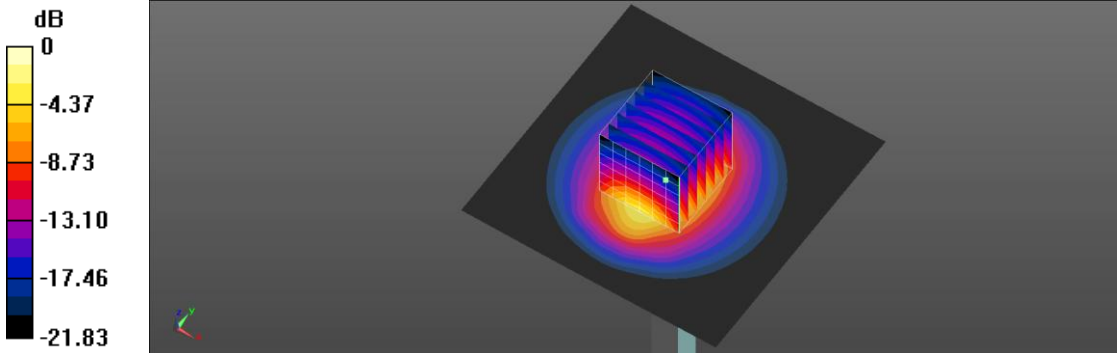
**Zoom Scan (7x7x7)/Cube 0:** Measurement grid: dx=5mm, dy=5mm, dz=5mm

Reference Value = 106.2 V/m; Power Drift = 0.04 dB

Peak SAR (extrapolated) = 27.4 W/kg

**SAR(1 g) = 13 W/kg; SAR(10 g) = 5.95 W/kg**

Maximum value of SAR (measured) = 22.0 W/kg



0 dB = 21.9 W/kg = 13.27 dBW/kg

Test Laboratory: A Test Lab Techno Corp.

Date/Time: 2019/4/5 PM 04:33:38

System Performance Check at 5250MHz\_20190405\_Body

**DUT: Dipole 5GHzV2; Type: D5GHz; Serial: 1203**

Communication System: UID 0, CW (0); Frequency: 5250 MHz; Duty Cycle: 1:1

Medium parameters used (interpolated):  $f = 5250$  MHz;  $\sigma = 5.287$  S/m;  $\epsilon_r = 50.197$ ;  $\rho = 1000$  kg/m<sup>3</sup>

Phantom section: Flat Section

Measurement Standard: DASYS (IEEE/IEC/ANSI C63.19-2007)

DASY5.2 Configuration:

- Area Scan setting - Find Secondary Maximum Within: 2.0dB and with a peak SAR value greater than 0.5 W/Kg
- Probe: EX3DV4 - SN3977; ConvF(5.08, 5.08, 5.08); Calibrated: 2018/8/30
- Sensor-Surface: 1.4mm (Mechanical Surface Detection)
- Electronics: DAE4 Sn779; Calibrated: 2018/8/14
- Phantom: ELI V5.0 (20deg probe tilt); Type: QD OVA 002 AA; Serial: 1133
- Measurement SW: DASYS2, Version 52.10 (2); SEMCAD X Version 14.6.10 (7331)

**Area Scan (91x91x1):** Interpolated grid: dx=1.000 mm, dy=1.000 mm

Maximum value of SAR (interpolated) = 15.0 W/kg

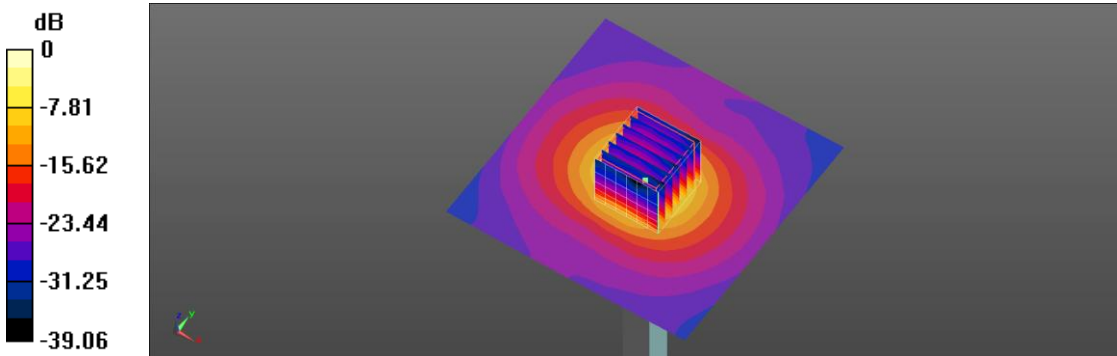
**Zoom Scan (7x7x7)/Cube 0:** Measurement grid: dx=4mm, dy=4mm, dz=1.4mm

Reference Value = 60.41 V/m; Power Drift = -0.07 dB

Peak SAR (extrapolated) = 26.5 W/kg

**SAR(1 g) = 7.34 W/kg; SAR(10 g) = 2.08 W/kg**

Maximum value of SAR (measured) = 15.7 W/kg



0 dB = 15.7 W/kg = 11.96 dBW/kg

Test Laboratory: A Test Lab Techno Corp.

Date/Time: 2019/4/5 PM 05:02:31

System Performance Check at 5600MHz\_20190405\_Body

**DUT: Dipole 5GHzV2; Type: D5GHz; Serial: 1203**

Communication System: UID 0, CW (0); Frequency: 5600 MHz; Duty Cycle: 1:1

Medium parameters used:  $f = 5600 \text{ MHz}$ ;  $\sigma = 5.814 \text{ S/m}$ ;  $\epsilon_r = 49.308$ ;  $\rho = 1000 \text{ kg/m}^3$

Phantom section: Flat Section

Measurement Standard: DASY5 (IEEE/IEC/ANSI C63.19-2007)

DASY5.2 Configuration:

- Area Scan setting - Find Secondary Maximum Within: 2.0dB and with a peak SAR value greater than 0.5 W/Kg
- Probe: EX3DV4 - SN3977; ConvF(4.41, 4.41, 4.41); Calibrated: 2018/8/30
- Sensor-Surface: 1.4mm (Mechanical Surface Detection)
- Electronics: DAE4 Sn779; Calibrated: 2018/8/14
- Phantom: ELI V5.0 (20deg probe tilt); Type: QD OVA 002 AA; Serial: 1133
- Measurement SW: DASY52, Version 52.10 (2); SEMCAD X Version 14.6.10 (7331)

**Area Scan (91x91x1):** Interpolated grid:  $dx=1.000 \text{ mm}$ ,  $dy=1.000 \text{ mm}$

Maximum value of SAR (interpolated) = 15.8 W/kg

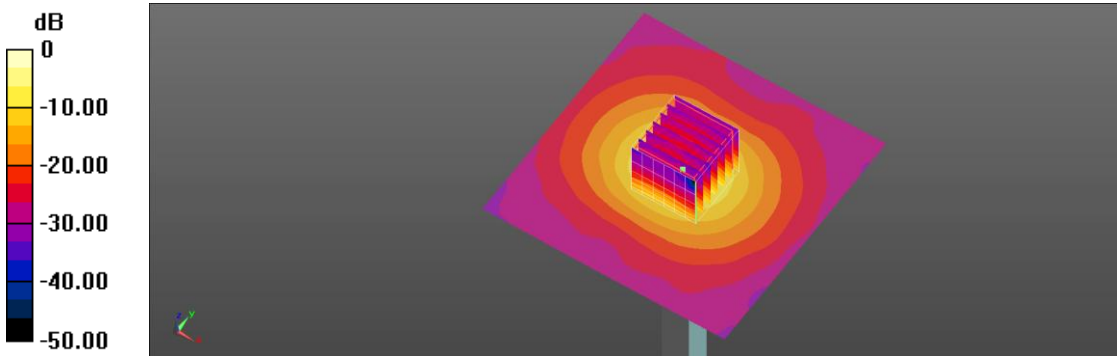
**Zoom Scan (7x7x7)/Cube 0:** Measurement grid:  $dx=4\text{mm}$ ,  $dy=4\text{mm}$ ,  $dz=1.4\text{mm}$

Reference Value = 59.67 V/m; Power Drift = -0.06 dB

Peak SAR (extrapolated) = 30.5 W/kg

**SAR(1 g) = 7.88 W/kg; SAR(10 g) = 2.19 W/kg**

Maximum value of SAR (measured) = 16.6 W/kg



0 dB = 16.6 W/kg = 12.20 dBW/kg

Test Laboratory: A Test Lab Techno Corp.

Date/Time: 2019/4/5 PM 05:54:49

System Performance Check at 5750MHz\_20190405\_Body

**DUT: Dipole 5GHzV2; Type: D5GHz; Serial: 1203**

Communication System: UID 0, CW (0); Frequency: 5750 MHz; Duty Cycle: 1:1

Medium parameters used:  $f = 5750$  MHz;  $\sigma = 6.034$  S/m;  $\epsilon_r = 48.787$ ;  $\rho = 1000$  kg/m<sup>3</sup>

Phantom section: Flat Section

Measurement Standard: DASYS (IEEE/IEC/ANSI C63.19-2007)

DASY5.2 Configuration:

- Area Scan setting - Find Secondary Maximum Within: 2.0dB and with a peak SAR value greater than 0.5 W/Kg
- Probe: EX3DV4 - SN3977; ConvF(4.49, 4.49, 4.49); Calibrated: 2018/8/30
- Sensor-Surface: 1.4mm (Mechanical Surface Detection)
- Electronics: DAE4 Sn779; Calibrated: 2018/8/14
- Phantom: ELI V5.0 (20deg probe tilt); Type: QD OVA 002 AA; Serial: 1133
- Measurement SW: DASYS2, Version 52.10 (2); SEMCAD X Version 14.6.10 (7331)

**Area Scan (91x91x1):** Interpolated grid: dx=1.000 mm, dy=1.000 mm

Maximum value of SAR (interpolated) = 15.9 W/kg

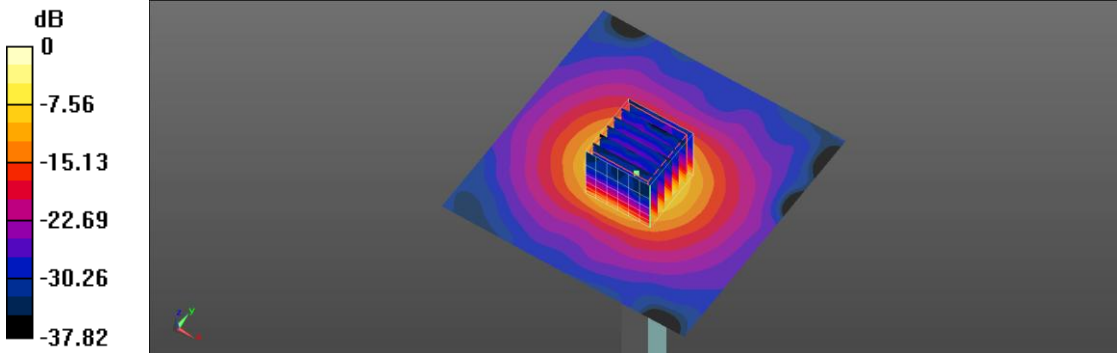
**Zoom Scan (7x7x7)/Cube 0:** Measurement grid: dx=4mm, dy=4mm, dz=1.4mm

Reference Value = 58.44 V/m; Power Drift = 0.06 dB

Peak SAR (extrapolated) = 30.3 W/kg

**SAR(1 g) = 7.62 W/kg; SAR(10 g) = 2.11 W/kg**

Maximum value of SAR (measured) = 16.4 W/kg



0 dB = 16.4 W/kg = 12.15 dBW/kg



## Appendix B - SAR Measurement Data

Test Laboratory: A Test Lab Techno Corp.

Date/Time: 2019/4/4 PM 02:25:45

1\_IEEE 802.11b CH6\_1M\_Bottom of Laptop\_0mm\_Ant Main

**DUT: 9560NGW; Type: Intel Wireless-AC 9560**

Communication System: UID 0, IEEE 802.11b (0); Frequency: 2437 MHz; Duty Cycle: 1:1

Medium parameters used (interpolated):  $f = 2437$  MHz;  $\sigma = 1.999$  S/m;  $\epsilon_r = 53.986$ ;  $\rho = 1000$  kg/m<sup>3</sup>

Phantom section: Flat Section

Measurement Standard: DASYS (IEEE/IEC/ANSI C63.19-2007)

DASY5.2 Configuration:

- Area Scan setting - Find Secondary Maximum Within: 2.0dB and with a peak SAR value greater than 0.5 W/Kg
- Probe: EX3DV4 - SN3977; ConvF(7.56, 7.56, 7.56); Calibrated: 2018/8/30;
- Sensor-Surface: 1.4mm (Mechanical Surface Detection)
- Electronics: DAE4 Sn779; Calibrated: 2018/8/14
- Phantom: ELI V5.0 (20deg probe tilt); Type: QD OVA 002 AA; Serial: 1133
- Measurement SW: DASYS2, Version 52.10 (0); SEMCAD X Version 14.6.10 (7331)

**Area Scan (91x81x1):** Interpolated grid: dx=1.200 mm, dy=1.200 mm

Maximum value of SAR (interpolated) = 1.75 W/kg

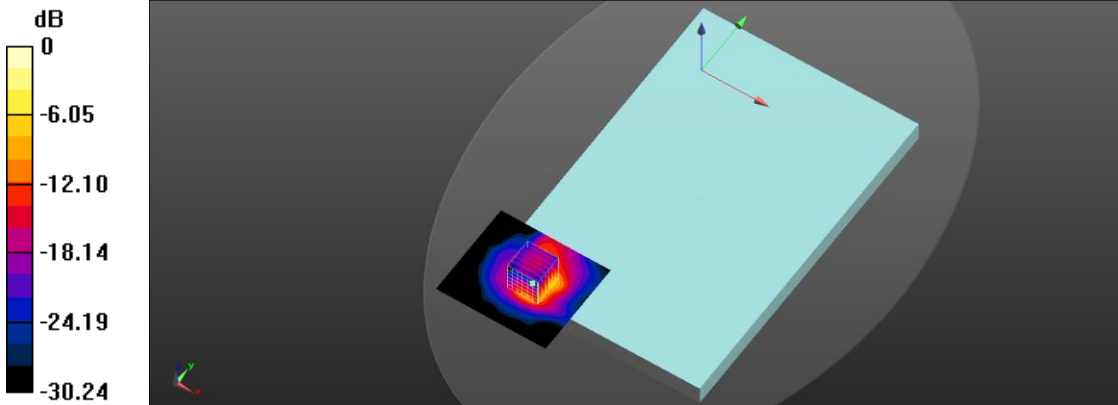
**Zoom Scan (7x7x7)/Cube 0:** Measurement grid: dx=5mm, dy=5mm, dz=5mm

Reference Value = 29.1 V/m; Power Drift = 0.04 dB

Peak SAR (extrapolated) = 2.35 W/kg

**SAR(1 g) = 0.943 W/kg; SAR(10 g) = 0.356 W/kg**

Maximum value of SAR (measured) = 1.81 W/kg



0 dB = 1.81 W/kg = 2.58 dBW/kg



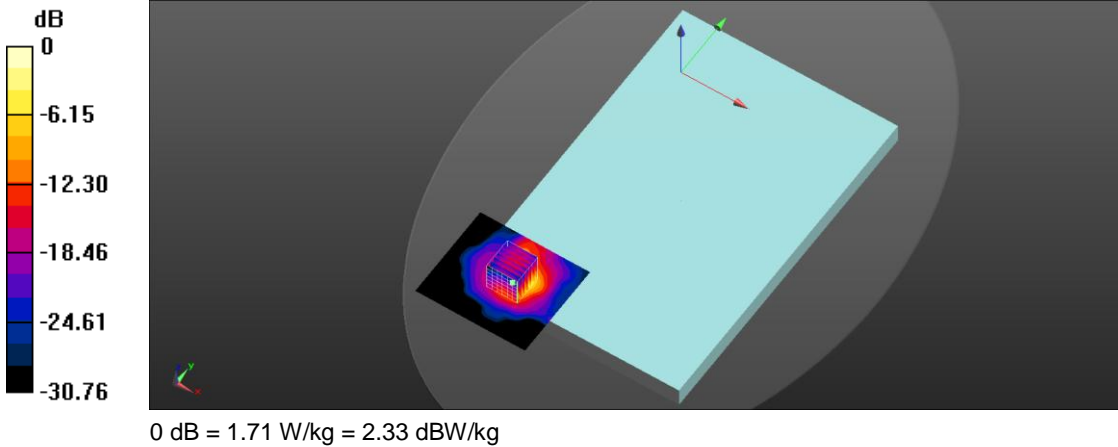
Test Laboratory: A Test Lab Techno Corp.  
 Date/Time: 2019/4/4 PM 02:47:05  
 3\_IEEE 802.11b CH1\_1M\_Bottom of Laptop\_0mm\_Ant Main  
**DUT: 9560NGW; Type: Intel Wireless-AC 9560**

Communication System: UID 0, IEEE 802.11b (0); Frequency: 2412 MHz; Duty Cycle: 1:1  
 Medium parameters used (interpolated):  $f = 2412 \text{ MHz}$ ;  $\sigma = 1.968 \text{ S/m}$ ;  $\epsilon_r = 54.101$ ;  $\rho = 1000 \text{ kg/m}^3$   
 Phantom section: Flat Section  
 Measurement Standard: DASYS (IEEE/IEC/ANSI C63.19-2007)  
 DASYS.2 Configuration:

- Area Scan setting - Find Secondary Maximum Within: 2.0dB and with a peak SAR value greater than 0.5 W/Kg
- Probe: EX3DV4 - SN3977; ConvF(7.56, 7.56, 7.56); Calibrated: 2018/8/30;
- Sensor-Surface: 1.4mm (Mechanical Surface Detection)
- Electronics: DAE4 Sn779; Calibrated: 2018/8/14
- Phantom: ELI V5.0 (20deg probe tilt); Type: QD OVA 002 AA; Serial: 1133
- Measurement SW: DASYS2, Version 52.10 (0); SEMCAD X Version 14.6.10 (7331)

**Area Scan (91x81x1):** Interpolated grid:  $dx=1.200 \text{ mm}$ ,  $dy=1.200 \text{ mm}$   
 Maximum value of SAR (interpolated) = 1.72 W/kg

**Zoom Scan (7x7x7)/Cube 0:** Measurement grid:  $dx=5\text{mm}$ ,  $dy=5\text{mm}$ ,  $dz=5\text{mm}$   
 Reference Value = 24.2 V/m; Power Drift = 0.04 dB  
 Peak SAR (extrapolated) = 2.13 W/kg  
**SAR(1 g) = 0.879 W/kg; SAR(10 g) = 0.329 W/kg**  
 Maximum value of SAR (measured) = 1.71 W/kg



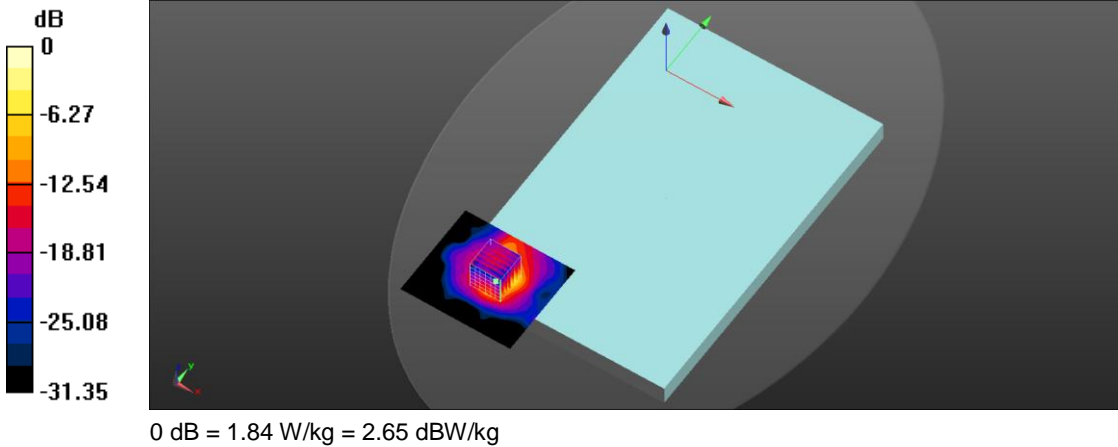
Test Laboratory: A Test Lab Techno Corp.  
 Date/Time: 2019/4/4 PM 03:07:38  
 4\_ IEEE 802.11b CH11\_1M\_Bottom of Laptop\_0mm\_Ant Main  
**DUT: 9560NGW; Type: Intel Wireless-AC 9560**

Communication System: UID 0, IEEE 802.11b (0); Frequency: 2462 MHz; Duty Cycle: 1:1  
 Medium parameters used (interpolated):  $f = 2462$  MHz;  $\sigma = 2.031$  S/m;  $\epsilon_r = 53.892$ ;  $\rho = 1000$  kg/m<sup>3</sup>  
 Phantom section: Flat Section  
 Measurement Standard: DASY5 (IEEE/IEC/ANSI C63.19-2007)  
 DASY5.2 Configuration:

- Area Scan setting - Find Secondary Maximum Within: 2.0dB and with a peak SAR value greater than 0.5 W/Kg
- Probe: EX3DV4 - SN3977; ConvF(7.56, 7.56, 7.56); Calibrated: 2018/8/30;
- Sensor-Surface: 1.4mm (Mechanical Surface Detection)
- Electronics: DAE4 Sn779; Calibrated: 2018/8/14
- Phantom: ELI V5.0 (20deg probe tilt); Type: QD OVA 002 AA; Serial: 1133
- Measurement SW: DASY52, Version 52.10 (0); SEMCAD X Version 14.6.10 (7331)

**Area Scan (91x81x1):** Interpolated grid: dx=1.200 mm, dy=1.200 mm  
 Maximum value of SAR (interpolated) = 1.88 W/kg

**Zoom Scan (7x7x7)/Cube 0:** Measurement grid: dx=5mm, dy=5mm, dz=5mm  
 Reference Value = 28.02 V/m; Power Drift = 0.03 dB  
 Peak SAR (extrapolated) = 2.54 W/kg  
**SAR(1 g) = 1.03 W/kg; SAR(10 g) = 0.382 W/kg**  
 Maximum value of SAR (measured) = 1.84 W/kg





Test Laboratory: A Test Lab Techno Corp.  
Date/Time: 2019/4/4 06:22:15 PM  
18\_IEEE 802.11b CH11\_1M\_Bottom of Laptop\_0mm\_Ant Main;repeat  
**DUT: 9560NGW; Type: Intel Wireless-AC 9560**

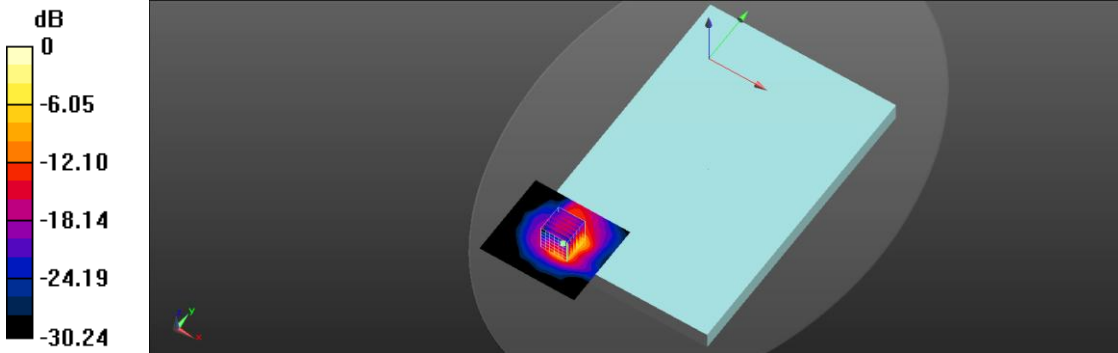
Communication System: UID 0, IEEE 802.11b (0); Frequency: 2462 MHz;Duty Cycle: 1:1  
Medium parameters used (interpolated):  $f = 2462$  MHz;  $\sigma = 2.031$  S/m;  $\epsilon_r = 53.892$ ;  $\rho = 1000$  kg/m<sup>3</sup>  
Phantom section: Flat Section  
Measurement Standard: DASY5 (IEEE/IEC/ANSI C63.19-2007)  
DASY5.2 Configuration:

- Area Scan setting - Find Secondary Maximum Within:2.0dB and with a peak SAR value greater than 0.5 W/Kg
- Probe: EX3DV4 - SN3977; ConvF(7.56, 7.56, 7.56); Calibrated: 2018/8/30
- Sensor-Surface: 1.4mm (Mechanical Surface Detection)
- Electronics: DAE4 Sn779; Calibrated: 2018/8/14
- Phantom: ELI V5.0 (20deg probe tilt); Type: QD OVA 002 AA; Serial: 1133
- Measurement SW: DASY52, Version 52.10 (2); SEMCAD X Version 14.6.10 (7331)

**Area Scan (91x81x1):** Interpolated grid: dx=1.200 mm, dy=1.200 mm  
Maximum value of SAR (interpolated) = 1.79 W/kg

**Zoom Scan (7x7x7)/Cube 0:** Measurement grid: dx=5mm, dy=5mm, dz=5mm  
Reference Value = 29.22 V/m; Power Drift = 0.04 dB  
Peak SAR (extrapolated) = 2.40 W/kg

**SAR(1 g) = 0.965 W/kg; SAR(10 g) = 0.365 W/kg**  
Maximum value of SAR (measured) = 1.86 W/kg



0 dB = 1.86 W/kg = 2.70 dBW/kg



Test Laboratory: A Test Lab Techno Corp.

Date/Time: 2019/4/4 PM 01:17:43

2\_ IEEE 802.11b CH6\_1M\_Bottom of Laptop\_0mm\_Ant Aux

**DUT: 9560NGW; Type: Intel Wireless-AC 9560**

Communication System: UID 0, IEEE 802.11b (0); Frequency: 2437 MHz; Duty Cycle: 1:1

Medium parameters used (interpolated):  $f = 2437$  MHz;  $\sigma = 1.999$  S/m;  $\epsilon_r = 53.986$ ;  $\rho = 1000$  kg/m<sup>3</sup>

Phantom section: Flat Section

Measurement Standard: DASY5 (IEEE/IEC/ANSI C63.19-2007)

DASY5.2 Configuration:

- Area Scan setting - Find Secondary Maximum Within: 2.0dB and with a peak SAR value greater than 0.5 W/Kg
- Probe: EX3DV4 - SN3977; ConvF(7.56, 7.56, 7.56); Calibrated: 2018/8/30;
- Sensor-Surface: 1.4mm (Mechanical Surface Detection)
- Electronics: DAE4 Sn779; Calibrated: 2018/8/14
- Phantom: ELI V5.0 (20deg probe tilt); Type: QD OVA 002 AA; Serial: 1133
- Measurement SW: DASY52, Version 52.10 (0); SEMCAD X Version 14.6.10 (7331)

**Area Scan (101x81x1):** Interpolated grid: dx=1.200 mm, dy=1.200 mm

Maximum value of SAR (interpolated) = 0.593 W/kg

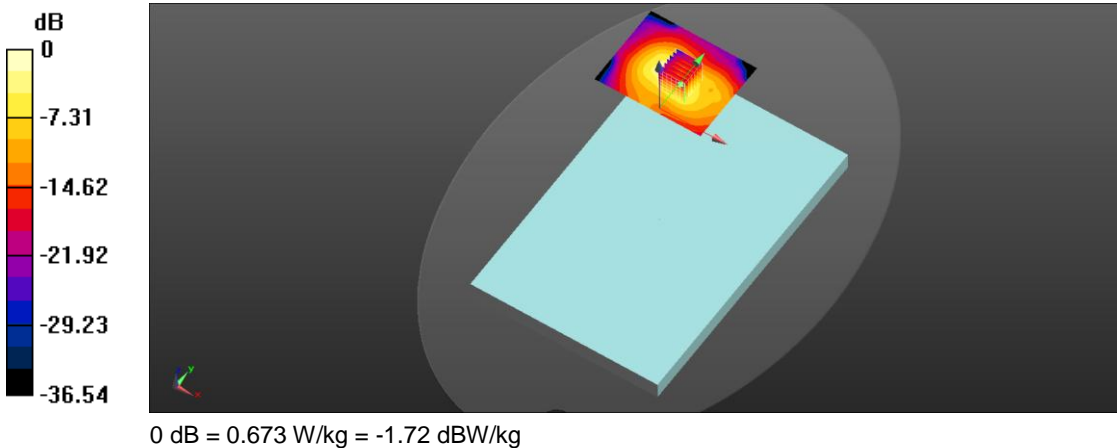
**Zoom Scan (7x7x7)/Cube 0:** Measurement grid: dx=5mm, dy=5mm, dz=5mm

Reference Value = 15.44 V/m; Power Drift = -0.15 dB

Peak SAR (extrapolated) = 0.866 W/kg

**SAR(1 g) = 0.383 W/kg; SAR(10 g) = 0.172 W/kg**

Maximum value of SAR (measured) = 0.673 W/kg



Test Laboratory: A Test Lab Techno Corp.  
 Date/Time: 2019/4/5 PM 06:04:06  
 5\_ IEEE 802.11ac 80 CH58\_MCS0\_Bottom of laptop\_0mm\_Ant Main  
**DUT: 9560NGW; Type: Intel Wireless-AC 9560**

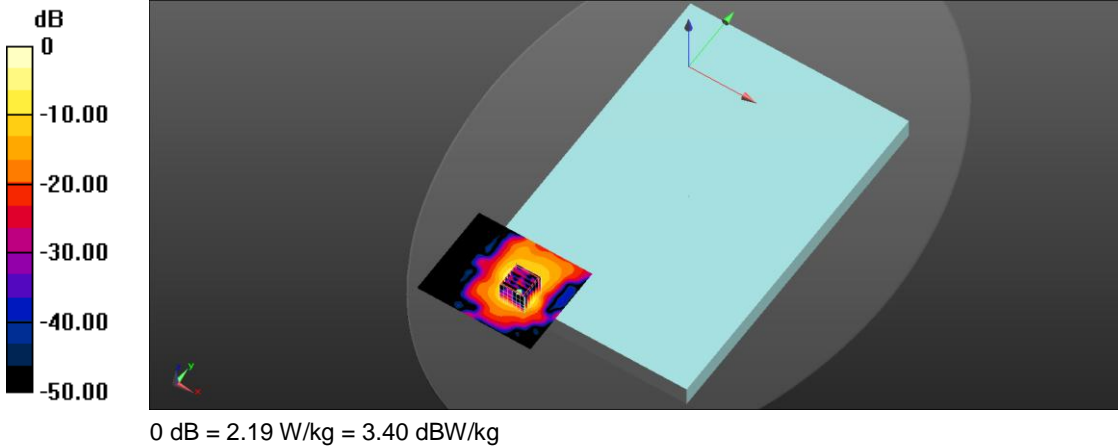
Communication System: UID 0, IEEE 802.11ac (0); Frequency: 5290 MHz; Duty Cycle: 1:1  
 Medium parameters used (interpolated):  $f = 5290 \text{ MHz}$ ;  $\sigma = 5.315 \text{ S/m}$ ;  $\epsilon_r = 50.016$ ;  $\rho = 1000 \text{ kg/m}^3$   
 Phantom section: Flat Section  
 Measurement Standard: DASY5 (IEEE/IEC/ANSI C63.19-2007)  
 DASY5.2 Configuration:

- Area Scan setting - Find Secondary Maximum Within: 2.0dB and with a peak SAR value greater than 0.5 W/Kg
- Probe: EX3DV4 - SN3977; ConvF(5.08, 5.08, 5.08); Calibrated: 2018/8/30;
- Sensor-Surface: 1.4mm (Mechanical Surface Detection)
- Electronics: DAE4 Sn779; Calibrated: 2018/8/14
- Phantom: ELI V5.0 (20deg probe tilt); Type: QD OVA 002 AA; Serial: 1133
- Measurement SW: DASY52, Version 52.10 (0); SEMCAD X Version 14.6.10 (7331)

**Area Scan (111x91x1):** Interpolated grid:  $dx=1.000 \text{ mm}$ ,  $dy=1.000 \text{ mm}$   
 Maximum value of SAR (interpolated) = 2.33 W/kg

**Zoom Scan (7x7x7)/Cube 0:** Measurement grid:  $dx=4\text{mm}$ ,  $dy=4\text{mm}$ ,  $dz=1.4\text{mm}$   
 Reference Value = 31.14 V/m; Power Drift = 0.04 dB  
 Peak SAR (extrapolated) = 4.78 W/kg

**SAR(1 g) = 0.914 W/kg; SAR(10 g) = 0.236 W/kg**  
 Maximum value of SAR (measured) = 2.19 W/kg



Test Laboratory: A Test Lab Techno Corp.

Date/Time: 2019/4/5 11:44:16 PM

19\_IEEE 802.11ac 80 CH58\_MCS0\_Bottom of laptop\_0mm\_Ant Main;repeat

**DUT: 9560NGW; Type: Intel Wireless-AC 9560**

Communication System: UID 0, IEEE 802.11ac (0); Frequency: 5290 MHz;Duty Cycle: 1:1

Medium parameters used (interpolated):  $f = 5290$  MHz;  $\sigma = 5.315$  S/m;  $\epsilon_r = 50.016$ ;  $\rho = 1000$  kg/m<sup>3</sup>

Phantom section: Flat Section

Measurement Standard: DASYS (IEEE/IEC/ANSI C63.19-2007)

DASY5.2 Configuration:

- Area Scan setting - Find Secondary Maximum Within:2.0dB and with a peak SAR value greater than 0.5 W/Kg
- Probe: EX3DV4 - SN3977; ConvF(5.08, 5.08, 5.08); Calibrated: 2018/8/30
- Sensor-Surface: 1.4mm (Mechanical Surface Detection)
- Electronics: DAE4 Sn779; Calibrated: 2018/8/14
- Phantom: ELI V5.0 (20deg probe tilt); Type: QD OVA 002 AA; Serial: 1133
- Measurement SW: DASYS2, Version 52.10 (2); SEMCAD X Version 14.6.10 (7331)

**Area Scan (111x91x1):** Interpolated grid: dx=1.000 mm, dy=1.000 mm

Maximum value of SAR (interpolated) = 2.31 W/kg

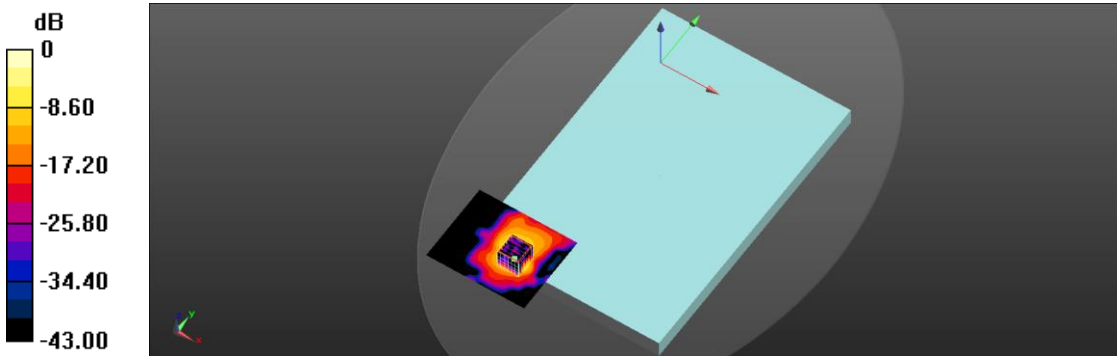
**Zoom Scan (7x7x7)/Cube 0:** Measurement grid: dx=4mm, dy=4mm, dz=1.4mm

Reference Value = 30.69 V/m; Power Drift = 0.04 dB

Peak SAR (extrapolated) = 4.71 W/kg

**SAR(1 g) = 0.901 W/kg; SAR(10 g) = 0.233 W/kg**

Maximum value of SAR (measured) = 2.19 W/kg



0 dB = 2.16 W/kg = 3.34 dBW/kg



Test Laboratory: A Test Lab Techno Corp.  
Date/Time: 2019/4/5 PM 08:03:41  
7\_IEEE 802.11ac 80 CH106\_MCS0\_Bottom of laptop\_0mm\_Ant Main  
**DUT: 9560NGW; Type: Intel Wireless-AC 9560**

Communication System: UID 0, IEEE 802.11ac (0); Frequency: 5530 MHz;Duty Cycle: 1:1  
Medium parameters used (interpolated):  $f = 5530$  MHz;  $\sigma = 5.692$  S/m;  $\epsilon_r = 49.362$ ;  $\rho = 1000$  kg/m<sup>3</sup>  
Phantom section: Flat Section  
Measurement Standard: DASY5 (IEEE/IEC/ANSI C63.19-2007)

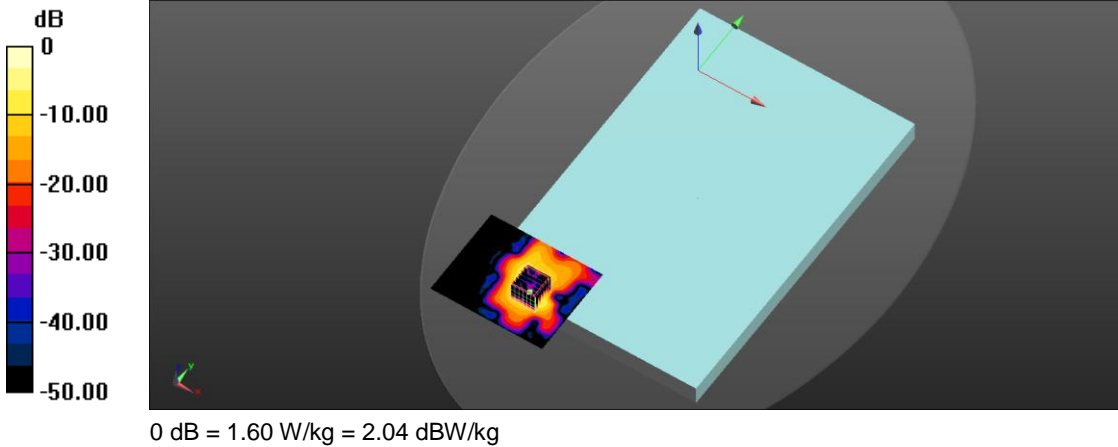
DASY5.2 Configuration:

- Area Scan setting - Find Secondary Maximum Within:2.0dB and with a peak SAR value greater than 0.5 W/Kg
- Probe: EX3DV4 - SN3977; ConvF(4.41, 4.41, 4.41); Calibrated: 2018/8/30;
- Sensor-Surface: 1.4mm (Mechanical Surface Detection)
- Electronics: DAE4 Sn779; Calibrated: 2018/8/14
- Phantom: ELI V5.0 (20deg probe tilt); Type: QD OVA 002 AA; Serial: 1133
- Measurement SW: DASY52, Version 52.10 (0); SEMCAD X Version 14.6.10 (7331)

**Area Scan (111x91x1):** Interpolated grid: dx=1.000 mm, dy=1.000 mm  
Maximum value of SAR (interpolated) = 1.70 W/kg

**Zoom Scan (7x7x7)/Cube 0:** Measurement grid: dx=4mm, dy=4mm, dz=1.4mm  
Reference Value = 35.54 V/m; Power Drift = 0.03 dB  
Peak SAR (extrapolated) = 2.91 W/kg

**SAR(1 g) = 0.666 W/kg; SAR(10 g) = 0.184 W/kg**  
Maximum value of SAR (measured) = 1.60 W/kg



Test Laboratory: A Test Lab Techno Corp.  
 Date/Time: 2019/4/5 PM 08:51:22  
 9\_IEEE 802.11ac 80 CH122\_MCS0\_Bottom of laptop\_0mm\_Ant Main  
**DUT: 9560NGW; Type: Intel Wireless-AC 9560**

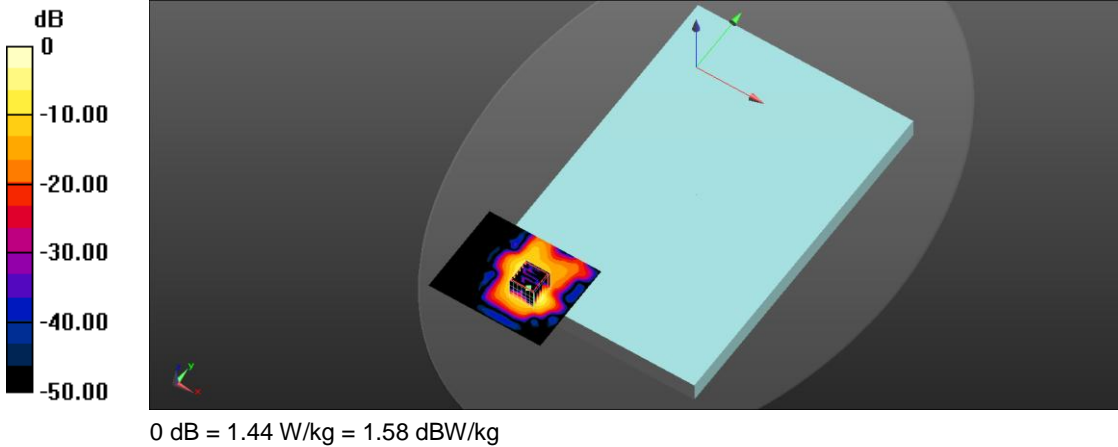
Communication System: UID 0, IEEE 802.11ac (0); Frequency: 5610 MHz; Duty Cycle: 1:1  
 Medium parameters used (interpolated):  $f = 5610$  MHz;  $\sigma = 5.819$  S/m;  $\epsilon_r = 49.285$ ;  $\rho = 1000$  kg/m<sup>3</sup>  
 Phantom section: Flat Section  
 Measurement Standard: DASY5 (IEEE/IEC/ANSI C63.19-2007)  
 DASY5.2 Configuration:

- Area Scan setting - Find Secondary Maximum Within: 2.0dB and with a peak SAR value greater than 0.5 W/Kg
- Probe: EX3DV4 - SN3977; ConvF(4.41, 4.41, 4.41); Calibrated: 2018/8/30;
- Sensor-Surface: 1.4mm (Mechanical Surface Detection)
- Electronics: DAE4 Sn779; Calibrated: 2018/8/14
- Phantom: ELI V5.0 (20deg probe tilt); Type: QD OVA 002 AA; Serial: 1133
- Measurement SW: DASY52, Version 52.10 (0); SEMCAD X Version 14.6.10 (7331)

**Area Scan (111x91x1):** Interpolated grid: dx=1.000 mm, dy=1.000 mm  
 Maximum value of SAR (interpolated) = 1.47 W/kg

**Zoom Scan (7x7x7)/Cube 0:** Measurement grid: dx=4mm, dy=4mm, dz=1.4mm  
 Reference Value = 37.57 V/m; Power Drift = 0.02 dB  
 Peak SAR (extrapolated) = 2.55 W/kg

**SAR(1 g) = 0.568 W/kg; SAR(10 g) = 0.166 W/kg**  
 Maximum value of SAR (measured) = 1.44 W/kg





Test Laboratory: A Test Lab Techno Corp.  
 Date/Time: 2019/4/5 PM 09:13:12  
 11\_IEEE 802.11ac 80 CH138\_MCS0\_Bottom of laptop\_0mm\_Ant Main  
**DUT: 9560NGW; Type: Intel Wireless-AC 9560**

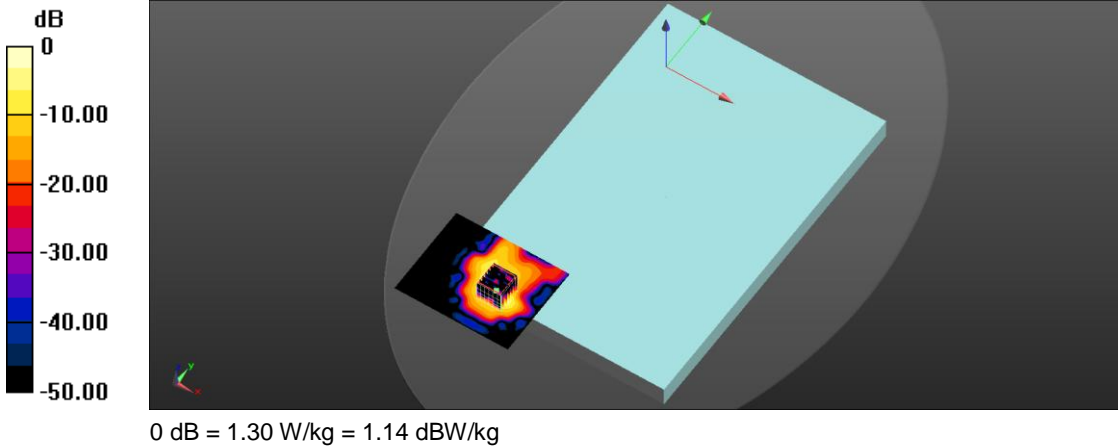
Communication System: UID 0, IEEE 802.11ac (0); Frequency: 5690 MHz;Duty Cycle: 1:1  
 Medium parameters used (interpolated):  $f = 5690$  MHz;  $\sigma = 5.976$  S/m;  $\epsilon_r = 48.919$ ;  $\rho = 1000$  kg/m<sup>3</sup>  
 Phantom section: Flat Section  
 Measurement Standard: DASYS (IEEE/IEC/ANSI C63.19-2007)  
 DASYS.2 Configuration:

- Area Scan setting - Find Secondary Maximum Within:2.0dB and with a peak SAR value greater than 0.5 W/Kg
- Probe: EX3DV4 - SN3977; ConvF(4.41, 4.41, 4.41); Calibrated: 2018/8/30;
- Sensor-Surface: 1.4mm (Mechanical Surface Detection)
- Electronics: DAE4 Sn779; Calibrated: 2018/8/14
- Phantom: ELI V5.0 (20deg probe tilt); Type: QD OVA 002 AA; Serial: 1133
- Measurement SW: DASYS2, Version 52.10 (0); SEMCAD X Version 14.6.10 (7331)

**Area Scan (111x91x1):** Interpolated grid: dx=1.000 mm, dy=1.000 mm  
 Maximum value of SAR (interpolated) = 1.40 W/kg

**Zoom Scan (7x7x7)/Cube 0:** Measurement grid: dx=4mm, dy=4mm, dz=1.4mm  
 Reference Value = 37.71 V/m; Power Drift = 0.04 dB  
 Peak SAR (extrapolated) = 2.36 W/kg

**SAR(1 g) = 0.519 W/kg; SAR(10 g) = 0.155 W/kg**  
 Maximum value of SAR (measured) = 1.30 W/kg



Test Laboratory: A Test Lab Techno Corp.  
 Date/Time: 2019/4/5 PM 10:09:50  
 13\_IEEE 802.11ac 80 CH155\_MCS0\_Bottom of laptop\_0mm\_ant Main  
**DUT: 9560NGW; Type: Intel Wireless-AC 9560**

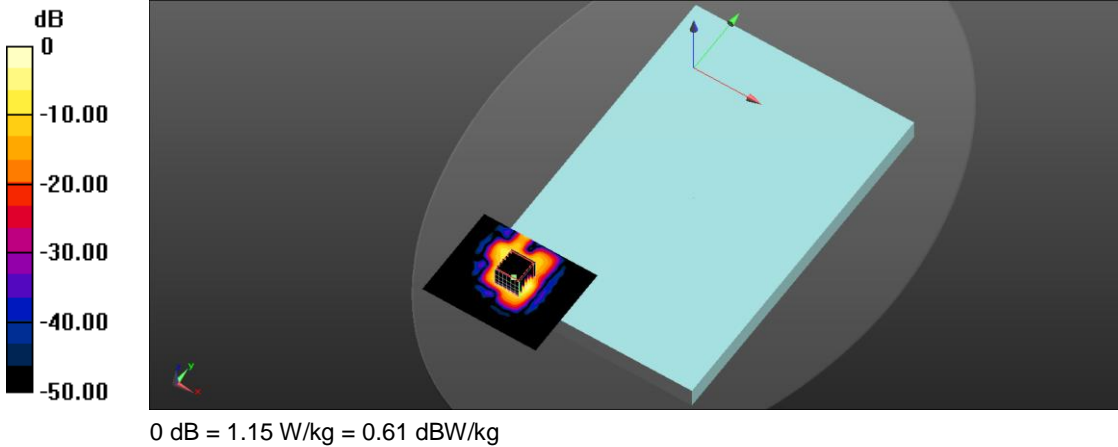
Communication System: UID 0, IEEE 802.11ac (0); Frequency: 5775 MHz; Duty Cycle: 1:1  
 Medium parameters used:  $f = 5775 \text{ MHz}$ ;  $\sigma = 6.099 \text{ S/m}$ ;  $\epsilon_r = 48.587$ ;  $\rho = 1000 \text{ kg/m}^3$   
 Phantom section: Flat Section  
 Measurement Standard: DASYS (IEEE/IEC/ANSI C63.19-2007)  
 DASYS.2 Configuration:

- Area Scan setting - Find Secondary Maximum Within: 2.0dB and with a peak SAR value greater than 0.5 W/Kg
- Probe: EX3DV4 - SN3977; ConvF(4.49, 4.49, 4.49); Calibrated: 2018/8/30;
- Sensor-Surface: 1.4mm (Mechanical Surface Detection)
- Electronics: DAE4 Sn779; Calibrated: 2018/8/14
- Phantom: ELI V5.0 (20deg probe tilt); Type: QD OVA 002 AA; Serial: 1133
- Measurement SW: DASYS2, Version 52.10 (0); SEMCAD X Version 14.6.10 (7331)

**Area Scan (111x91x1):** Interpolated grid:  $dx=1.000 \text{ mm}$ ,  $dy=1.000 \text{ mm}$   
 Maximum value of SAR (interpolated) = 1.41 W/kg

**Zoom Scan (7x7x7)/Cube 0:** Measurement grid:  $dx=4\text{mm}$ ,  $dy=4\text{mm}$ ,  $dz=1.4\text{mm}$   
 Reference Value = 38.1 V/m; Power Drift = -0.01 dB  
 Peak SAR (extrapolated) = 2.07 W/kg

**SAR(1 g) = 0.429 W/kg; SAR(10 g) = 0.130 W/kg**  
 Maximum value of SAR (measured) = 1.15 W/kg



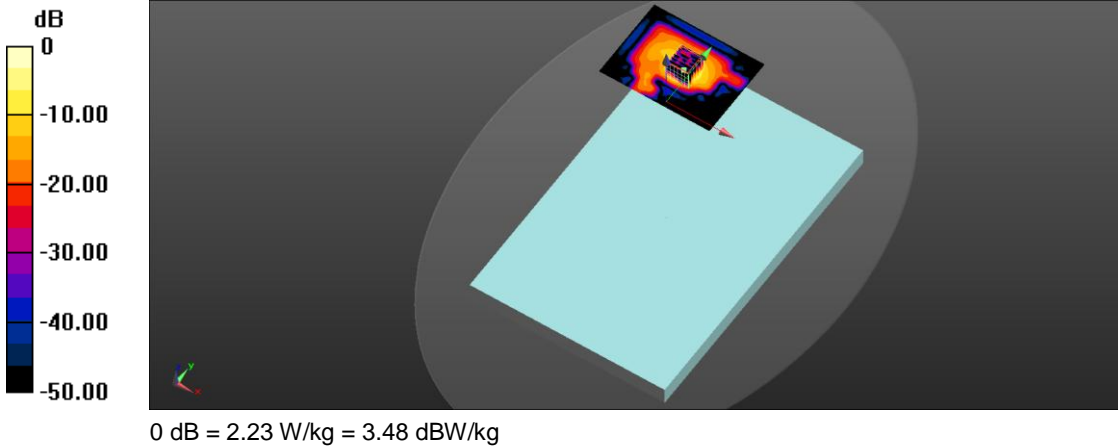
Test Laboratory: A Test Lab Techno Corp.  
 Date/Time: 2019/4/5 PM 07:00:11  
 6\_ IEEE 802.11ac 80 CH58\_MCS0\_Bottom of laptop\_0mm\_Ant Aux  
**DUT: 9560NGW; Type: Intel Wireless-AC 9560**

Communication System: UID 0, IEEE 802.11ac (0); Frequency: 5290 MHz; Duty Cycle: 1:1  
 Medium parameters used (interpolated):  $f = 5290 \text{ MHz}$ ;  $\sigma = 5.315 \text{ S/m}$ ;  $\epsilon_r = 50.016$ ;  $\rho = 1000 \text{ kg/m}^3$   
 Phantom section: Flat Section  
 Measurement Standard: DASY5 (IEEE/IEC/ANSI C63.19-2007)  
 DASY5.2 Configuration:

- Area Scan setting - Find Secondary Maximum Within: 2.0dB and with a peak SAR value greater than 0.5 W/Kg
- Probe: EX3DV4 - SN3977; ConvF(5.08, 5.08, 5.08); Calibrated: 2018/8/30;
- Sensor-Surface: 1.4mm (Mechanical Surface Detection)
- Electronics: DAE4 Sn779; Calibrated: 2018/8/14
- Phantom: ELI V5.0 (20deg probe tilt); Type: QD OVA 002 AA; Serial: 1133
- Measurement SW: DASY52, Version 52.10 (0); SEMCAD X Version 14.6.10 (7331)

**Area Scan (121x91x1):** Interpolated grid:  $dx=1.000 \text{ mm}$ ,  $dy=1.000 \text{ mm}$   
 Maximum value of SAR (interpolated) = 2.55 W/kg

**Zoom Scan (7x7x7)/Cube 0:** Measurement grid:  $dx=4\text{mm}$ ,  $dy=4\text{mm}$ ,  $dz=1.4\text{mm}$   
 Reference Value = 33.44 V/m; Power Drift = -0.10 dB  
 Peak SAR (extrapolated) = 3.86 W/kg  
**SAR(1 g) = 0.901 W/kg; SAR(10 g) = 0.240 W/kg**  
 Maximum value of SAR (measured) = 2.23 W/kg





Test Laboratory: A Test Lab Techno Corp.  
Date/Time: 2019/4/5 PM 07:40:18  
8\_IEEE 802.11ac 80 CH106\_MCS0\_Bottom of laptop\_0mm\_Ant Aux  
**DUT: 9560NGW; Type: Intel Wireless-AC 9560**

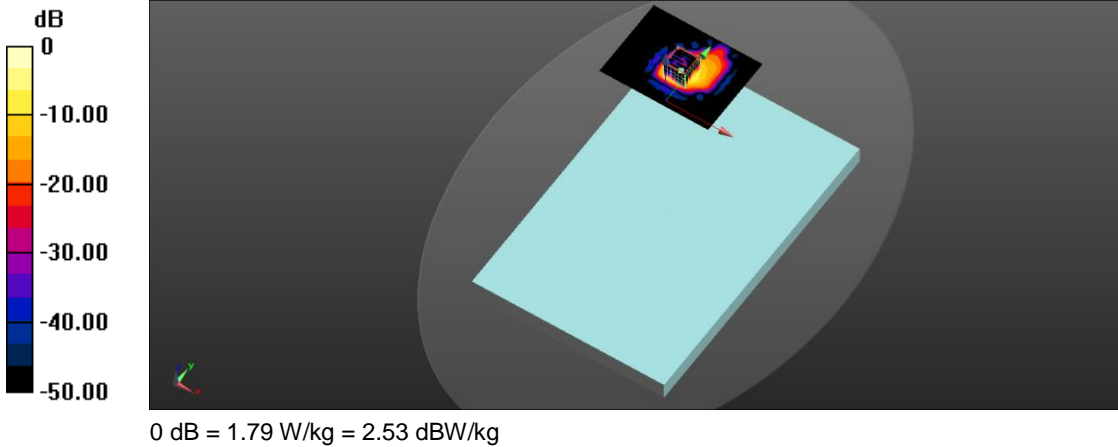
Communication System: UID 0, IEEE 802.11ac (0); Frequency: 5530 MHz;Duty Cycle: 1:1  
Medium parameters used (interpolated):  $f = 5530$  MHz;  $\sigma = 5.692$  S/m;  $\epsilon_r = 49.362$ ;  $\rho = 1000$  kg/m<sup>3</sup>  
Phantom section: Flat Section  
Measurement Standard: DASYS (IEEE/IEC/ANSI C63.19-2007)  
DASY5.2 Configuration:

- Area Scan setting - Find Secondary Maximum Within:2.0dB and with a peak SAR value greater than 0.5 W/Kg
- Probe: EX3DV4 - SN3977; ConvF(4.41, 4.41, 4.41); Calibrated: 2018/8/30;
- Sensor-Surface: 1.4mm (Mechanical Surface Detection)
- Electronics: DAE4 Sn779; Calibrated: 2018/8/14
- Phantom: ELI V5.0 (20deg probe tilt); Type: QD OVA 002 AA; Serial: 1133
- Measurement SW: DASYS2, Version 52.10 (0); SEMCAD X Version 14.6.10 (7331)

**Area Scan (121x91x1):** Interpolated grid: dx=1.000 mm, dy=1.000 mm  
Maximum value of SAR (interpolated) = 2.05 W/kg

**Zoom Scan (7x7x7)/Cube 0:** Measurement grid: dx=4mm, dy=4mm, dz=1.4mm  
Reference Value = 29.75 V/m; Power Drift = -0.12 dB  
Peak SAR (extrapolated) = 3.21 W/kg

**SAR(1 g) = 0.719 W/kg; SAR(10 g) = 0.183 W/kg**  
Maximum value of SAR (measured) = 1.79 W/kg





Test Laboratory: A Test Lab Techno Corp.  
Date/Time: 2019/4/5 PM 08:27:22  
10\_IEEE 802.11ac 80 CH122\_MCS0\_Bottom of laptop\_0mm\_Ant Aux  
**DUT: 9560NGW; Type: Intel Wireless-AC 9560**

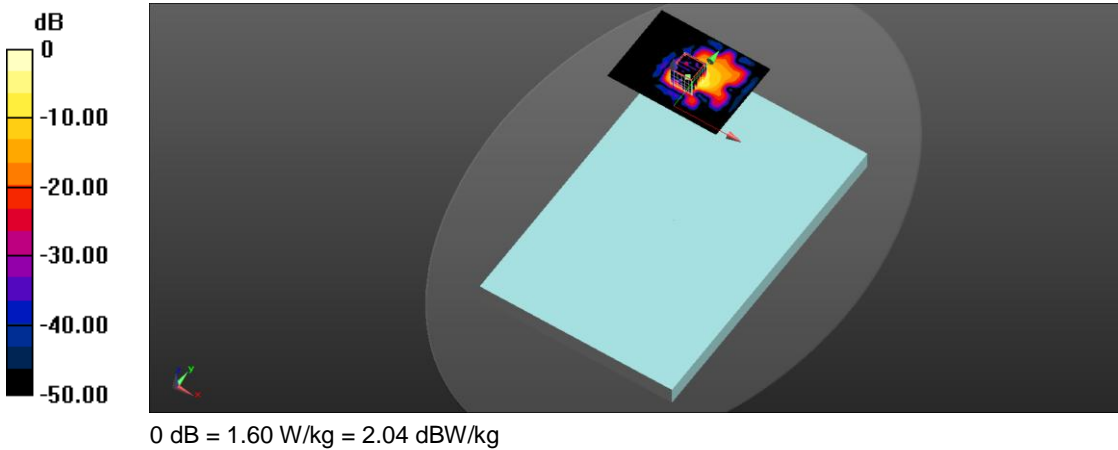
Communication System: UID 0, IEEE 802.11ac (0); Frequency: 5610 MHz;Duty Cycle: 1:1  
Medium parameters used (interpolated):  $f = 5610$  MHz;  $\sigma = 5.819$  S/m;  $\epsilon_r = 49.285$ ;  $\rho = 1000$  kg/m<sup>3</sup>  
Phantom section: Flat Section  
Measurement Standard: DASY5 (IEEE/IEC/ANSI C63.19-2007)  
DASY5.2 Configuration:

- Area Scan setting - Find Secondary Maximum Within:2.0dB and with a peak SAR value greater than 0.5 W/Kg
- Probe: EX3DV4 - SN3977; ConvF(4.41, 4.41, 4.41); Calibrated: 2018/8/30;
- Sensor-Surface: 1.4mm (Mechanical Surface Detection)
- Electronics: DAE4 Sn779; Calibrated: 2018/8/14
- Phantom: ELI V5.0 (20deg probe tilt); Type: QD OVA 002 AA; Serial: 1133
- Measurement SW: DASY52, Version 52.10 (0); SEMCAD X Version 14.6.10 (7331)

**Area Scan (121x91x1):** Interpolated grid: dx=1.000 mm, dy=1.000 mm  
Maximum value of SAR (interpolated) = 1.70 W/kg

**Zoom Scan (7x7x7)/Cube 0:** Measurement grid: dx=4mm, dy=4mm, dz=1.4mm  
Reference Value = 23.73 V/m; Power Drift = -0.14 dB  
Peak SAR (extrapolated) = 2.83 W/kg

**SAR(1 g) = 0.610 W/kg; SAR(10 g) = 0.147 W/kg**  
Maximum value of SAR (measured) = 1.60 W/kg





Test Laboratory: A Test Lab Techno Corp.  
Date/Time: 2019/4/5 PM 09:35:28  
12\_IEEE 802.11ac 80 CH138\_MCS0\_Bottom of laptop\_0mm\_Ant Aux  
**DUT: 9560NGW; Type: Intel Wireless-AC 9560**

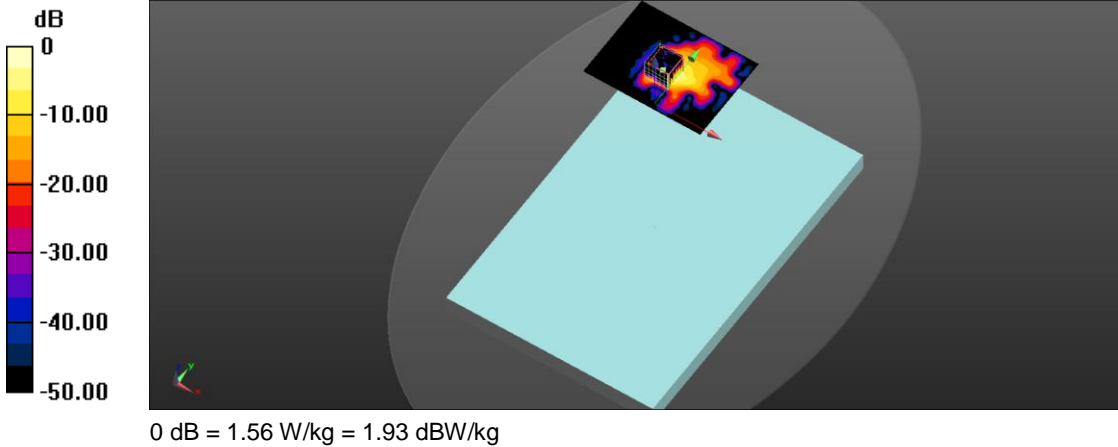
Communication System: UID 0, IEEE 802.11ac (0); Frequency: 5690 MHz;Duty Cycle: 1:1  
Medium parameters used (interpolated):  $f = 5690$  MHz;  $\sigma = 5.976$  S/m;  $\epsilon_r = 48.919$ ;  $\rho = 1000$  kg/m<sup>3</sup>  
Phantom section: Flat Section  
Measurement Standard: DASY5 (IEEE/IEC/ANSI C63.19-2007)  
DASY5.2 Configuration:

- Area Scan setting - Find Secondary Maximum Within:2.0dB and with a peak SAR value greater than 0.5 W/Kg
- Probe: EX3DV4 - SN3977; ConvF(4.41, 4.41, 4.41); Calibrated: 2018/8/30;
- Sensor-Surface: 1.4mm (Mechanical Surface Detection)
- Electronics: DAE4 Sn779; Calibrated: 2018/8/14
- Phantom: ELI V5.0 (20deg probe tilt); Type: QD OVA 002 AA; Serial: 1133
- Measurement SW: DASY52, Version 52.10 (0); SEMCAD X Version 14.6.10 (7331)

**Area Scan (121x91x1):** Interpolated grid: dx=1.000 mm, dy=1.000 mm  
Maximum value of SAR (interpolated) = 1.56 W/kg

**Zoom Scan (7x7x7)/Cube 0:** Measurement grid: dx=4mm, dy=4mm, dz=1.4mm  
Reference Value = 20.8 V/m; Power Drift = -0.16 dB  
Peak SAR (extrapolated) = 3.73 W/kg

**SAR(1 g) = 0.550 W/kg; SAR(10 g) = 0.133 W/kg**  
Maximum value of SAR (measured) = 1.56 W/kg



Test Laboratory: A Test Lab Techno Corp.  
 Date/Time: 2019/4/5 PM 10:53:15  
 14\_IEEE 802.11ac 80 CH155\_MCS0\_Bottom of laptop\_0mm\_Ant Aux  
**DUT: 9560NGW; Type: Intel Wireless-AC 9560**

Communication System: UID 0, IEEE 802.11ac (0); Frequency: 5775 MHz; Duty Cycle: 1:1  
 Medium parameters used:  $f = 5775 \text{ MHz}$ ;  $\sigma = 6.099 \text{ S/m}$ ;  $\epsilon_r = 48.587$ ;  $\rho = 1000 \text{ kg/m}^3$   
 Phantom section: Flat Section  
 Measurement Standard: DASYS (IEEE/IEC/ANSI C63.19-2007)

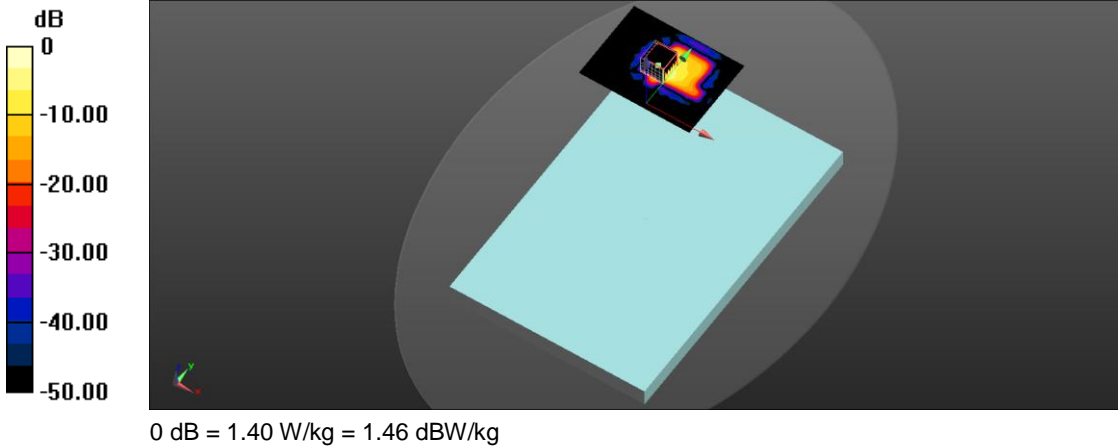
DASY5.2 Configuration:

- Area Scan setting - Find Secondary Maximum Within: 2.0dB and with a peak SAR value greater than 0.5 W/Kg
- Probe: EX3DV4 - SN3977; ConvF(4.49, 4.49, 4.49); Calibrated: 2018/8/30;
- Sensor-Surface: 1.4mm (Mechanical Surface Detection)
- Electronics: DAE4 Sn779; Calibrated: 2018/8/14
- Phantom: ELI V5.0 (20deg probe tilt); Type: QD OVA 002 AA; Serial: 1133
- Measurement SW: DASYS2, Version 52.10 (0); SEMCAD X Version 14.6.10 (7331)

**Area Scan (121x91x1):** Interpolated grid:  $dx=1.000 \text{ mm}$ ,  $dy=1.000 \text{ mm}$   
 Maximum value of SAR (interpolated) = 1.84 W/kg

**Zoom Scan (7x7x7)/Cube 0:** Measurement grid:  $dx=4\text{mm}$ ,  $dy=4\text{mm}$ ,  $dz=1.4\text{mm}$   
 Reference Value = 33.67 V/m; Power Drift = -0.12 dB  
 Peak SAR (extrapolated) = 2.52 W/kg

**SAR(1 g) = 0.493 W/kg; SAR(10 g) = 0.117 W/kg**  
 Maximum value of SAR (measured) = 1.40 W/kg





Test Laboratory: A Test Lab Techno Corp.  
Date/Time: 2019/4/4 PM 05:16:24  
15\_Bluetooth CH0\_1M\_Bottom of laptop\_0mm\_Ant Aux  
**DUT: 9560NGW; Type: Intel Wireless-AC 9560**

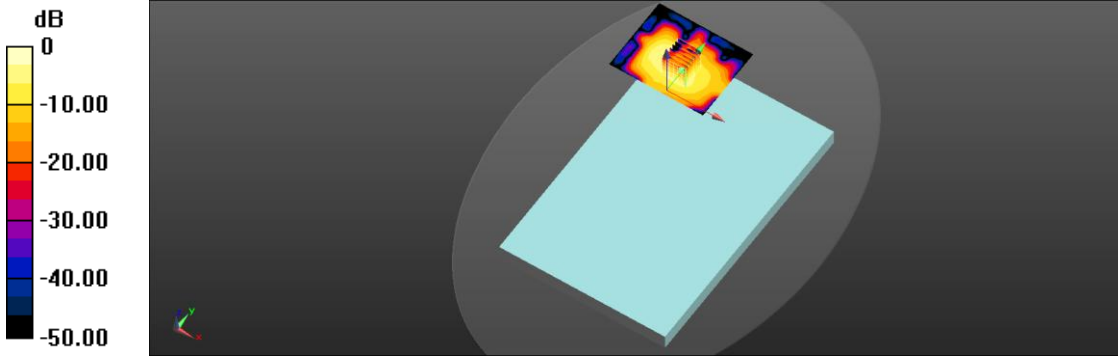
Communication System: UID 0, Bluetooth (0); Frequency: 2402 MHz; Duty Cycle: 1:1  
Medium parameters used (interpolated):  $f = 2402$  MHz;  $\sigma = 1.956$  S/m;  $\epsilon_r = 54.13$ ;  $\rho = 1000$  kg/m<sup>3</sup>  
Phantom section: Flat Section  
Measurement Standard: DASYS (IEEE/IEC/ANSI C63.19-2007)  
DASY5.2 Configuration:

- Area Scan setting - Find Secondary Maximum Within: 2.0dB and with a peak SAR value greater than 0.5 W/Kg
- Probe: EX3DV4 - SN3977; ConvF(7.56, 7.56, 7.56); Calibrated: 2018/8/30
- Sensor-Surface: 1.4mm (Mechanical Surface Detection)
- Electronics: DAE4 Sn779; Calibrated: 2018/8/14
- Phantom: ELI V5.0 (20deg probe tilt); Type: QD OVA 002 AA; Serial: 1133
- Measurement SW: DASYS2, Version 52.10 (2); SEMCAD X Version 14.6.10 (7331)

**Area Scan (101x81x1):** Interpolated grid:  $dx=1.200$  mm,  $dy=1.200$  mm  
Maximum value of SAR (interpolated) = 0.157 W/kg

**Zoom Scan (7x7x7)/Cube 0:** Measurement grid:  $dx=5$ mm,  $dy=5$ mm,  $dz=5$ mm  
Reference Value = 9.614 V/m; Power Drift = -0.19 dB  
Peak SAR (extrapolated) = 0.213 W/kg

**SAR(1 g) = 0.096 W/kg; SAR(10 g) = 0.044 W/kg**  
Maximum value of SAR (measured) = 0.165 W/kg



0 dB = 0.165 W/kg = -7.83 dBW/kg



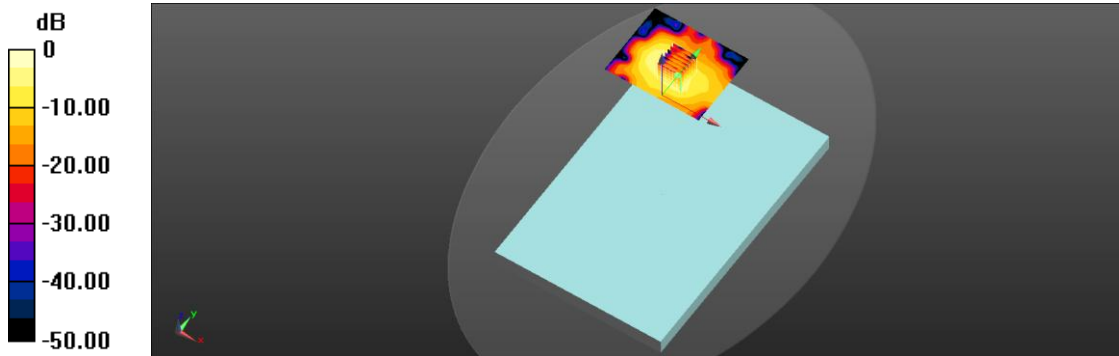
Test Laboratory: A Test Lab Techno Corp.  
 Date/Time: 2019/4/4 PM 05:38:23  
 16\_Bluetooth CH39\_1M\_Bottom of laptop\_0mm\_Ant Aux  
**DUT: 9560NGW; Type: Intel Wireless-AC 9560**

Communication System: UID 0, Bluetooth (0); Frequency: 2441 MHz; Duty Cycle: 1:1  
 Medium parameters used (interpolated):  $f = 2441$  MHz;  $\sigma = 2.004$  S/m;  $\epsilon_r = 53.968$ ;  $\rho = 1000$  kg/m<sup>3</sup>  
 Phantom section: Flat Section  
 Measurement Standard: DASYS (IEEE/IEC/ANSI C63.19-2007)  
 DASYS.2 Configuration:

- Area Scan setting - Find Secondary Maximum Within: 2.0dB and with a peak SAR value greater than 0.5 W/Kg
- Probe: EX3DV4 - SN3977; ConvF(7.56, 7.56, 7.56); Calibrated: 2018/8/30
- Sensor-Surface: 1.4mm (Mechanical Surface Detection)
- Electronics: DAE4 Sn779; Calibrated: 2018/8/14
- Phantom: ELI V5.0 (20deg probe tilt); Type: QD OVA 002 AA; Serial: 1133
- Measurement SW: DASYS2, Version 52.10 (2); SEMCAD X Version 14.6.10 (7331)

**Area Scan (101x81x1):** Interpolated grid:  $dx=1.200$  mm,  $dy=1.200$  mm  
 Maximum value of SAR (interpolated) = 0.160 W/kg

**Zoom Scan (7x7x7)/Cube 0:** Measurement grid:  $dx=5$ mm,  $dy=5$ mm,  $dz=5$ mm  
 Reference Value = 11.02 V/m; Power Drift = -0.13 dB  
 Peak SAR (extrapolated) = 0.217 W/kg  
**SAR(1 g) = 0.096 W/kg; SAR(10 g) = 0.044 W/kg**  
 Maximum value of SAR (measured) = 0.168 W/kg



0 dB = 0.168 W/kg = -7.75 dBW/kg



Test Laboratory: A Test Lab Techno Corp.  
Date/Time: 2019/4/4 PM 05:58:27  
17\_Bluetooth CH78\_1M\_Bottom of laptop\_0mm\_Ant Aux  
**DUT: 9560NGW; Type: Intel Wireless-AC 9560**

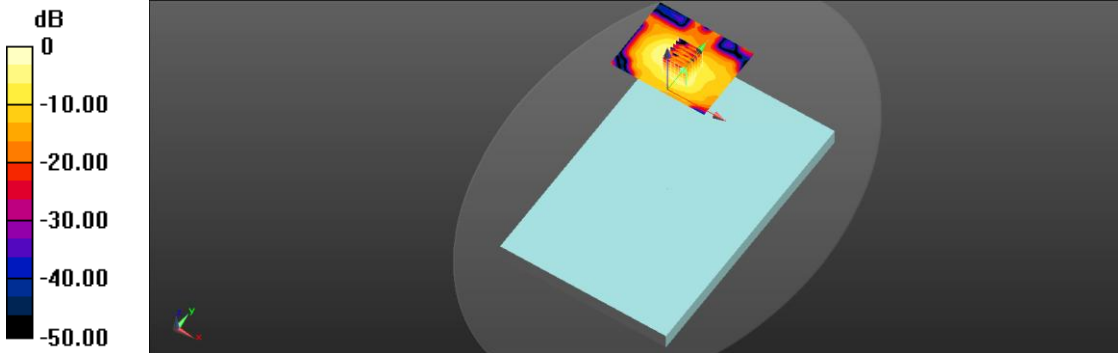
Communication System: UID 0, Bluetooth (0); Frequency: 2480 MHz; Duty Cycle: 1:1  
Medium parameters used:  $f = 2480 \text{ MHz}$ ;  $\sigma = 2.053 \text{ S/m}$ ;  $\epsilon_r = 53.843$ ;  $\rho = 1000 \text{ kg/m}^3$   
Phantom section: Flat Section  
Measurement Standard: DASYS (IEEE/IEC/ANSI C63.19-2007)  
DASY5.2 Configuration:

- Area Scan setting - Find Secondary Maximum Within: 2.0dB and with a peak SAR value greater than 0.5 W/Kg
- Probe: EX3DV4 - SN3977; ConvF(7.56, 7.56, 7.56); Calibrated: 2018/8/30
- Sensor-Surface: 1.4mm (Mechanical Surface Detection)
- Electronics: DAE4 Sn779; Calibrated: 2018/8/14
- Phantom: ELI V5.0 (20deg probe tilt); Type: QD OVA 002 AA; Serial: 1133
- Measurement SW: DASYS2, Version 52.10 (2); SEMCAD X Version 14.6.10 (7331)

**Area Scan (101x81x1):** Interpolated grid:  $dx=1.200 \text{ mm}$ ,  $dy=1.200 \text{ mm}$   
Maximum value of SAR (interpolated) = 0.125 W/kg

**Zoom Scan (7x7x7)/Cube 0:** Measurement grid:  $dx=5\text{mm}$ ,  $dy=5\text{mm}$ ,  $dz=5\text{mm}$   
Reference Value = 11.03 V/m; Power Drift = -0.18 dB  
Peak SAR (extrapolated) = 0.168 W/kg

**SAR(1 g) = 0.075 W/kg; SAR(10 g) = 0.034 W/kg**  
Maximum value of SAR (measured) = 0.130 W/kg



0 dB = 0.130 W/kg = -8.86 dBW/kg



## ***Appendix C - Calibration***

All of the instruments Calibration information are listed below.

- Dipole \_ D2450V2 SN: 735
- Dipole \_ D5GHzV2 SN: 1203
- Probe \_ EX3DV4 SN: 3977
- DAE \_ DAE4 SN: 779

---- END ----