



WARNING! Any changes or modifications not expressly approved by the party responsible for compliance could void the user's authority to operate the equipment.

Prohibition of Co-location

This device and its antenna(s) must not be co-located or operating in conjunction with any other antenna or transmitter.

IMPORTANT NOTE:

Radiation Exposure Statement: This equipment complies with FCC radiation exposure limits set forth for an uncontrolled environment. End users must follow the specific operating instructions for satisfying RF exposure compliance. To maintain compliance with FCC exposure compliance requirement, please follow operation instruction as documented in this manual.



WARNING! This equipment must be installed and operated in accordance with provided instructions and the antenna(s) used for this transmitter must be installed to provide a separation distance of at least 20 cm from all persons and must not be co-located or operating in conjunction with any other antenna or transmitter.

Compliance Statement of Innovation, Science and Economic Development Canada (ISED)

This device complies with Innovation, Science and Economic Development Canada licence exempt RSS standards. Operation is subject to the following two conditions: (1) this device may not cause interference, and (2) this device must accept any interference, including interference that may cause undesired operation of the device.

CAN ICES-003(B)/NMB-003(B)

Déclaration de conformité de Innovation, Sciences et Développement économique Canada (ISED)

Le présent appareil est conforme aux CNR d'Innovation, Sciences et Développement économique Canada applicables aux appareils radio exempts de licence. L'exploitation est autorisée aux deux conditions suivantes: (1) l'appareil ne doit pas produire de brouillage, et (2) l'utilisateur de l'appareil doit accepter tout brouillage radioélectrique subi, même si le brouillage est susceptible d'en compromettre le fonctionnement.
CAN ICES-003(B)/NMB-003(B)

NCC 警告語

「取得審驗證明之低功率射頻器材，非經核准，公司、商號或使用者均不得擅自變更頻率、加大功率或變更原設計之特性及功能。低功率射頻器材之使用不得影響飛航安全及干擾合法通信；經發現有干擾現象時，應立即停用，並改善至無干擾時方得繼續使用。前述合法通信，指依電信管理法規定作業之無線電通信。低功率射頻器材須忍受合法通信或工業、科學及醫療用電波輻射性電機設備之干擾。」

安全說明：

- 請在溫度為 0° C (32° F) 至 40° C (104° F) 之間的環境中使用本產品。
- 請依照產品上的電源功率貼紙說明使用正確的電源變壓器，如果使用錯誤規格的電源變壓器有可能造成內部零件的損毀。
- 請勿將產品放置於不平坦或不穩定的表面，若產品的機殼毀損，請聯絡維修服務人員。
- 請勿在產品上放置其他物品，請勿將任何物品塞入產品內，以避免引起元件短路或電路損毀。
- 請保持機器在乾燥的環境下使用，雨水、溼氣、液體等含有礦物質將會腐蝕電子線路，請勿在雷電天氣下使用數據機。
- 請勿堵塞產品的通風孔，以避免因散熱不良而導致系統過熱。
- 請勿使用破損的電源線、附件或其他周邊產品。
- 如果電源已毀損，請不要嘗試自行修復，請將其交給專業技術服務人員或經銷商來處理。
- 為了防止電擊風險，在撥動主機之前，請先將電源線插頭暫時從電源插座上拔除。

「產品之限用物質含有情況」之相關資訊，請參考下表：

單元	限用物質及其化學符號					
	鉛 (Pb)	汞 (Hg)	鎘 (Cd)	六價鉻 (Cr ^{VI})	多溴聯苯 (PBB)	多溴二苯醚 (PBDE)
印刷電路板及電子組件	-	○	○	○	○	○
結構組件 (金屬/塑膠)	○	○	○	○	○	○
其他組件 (如：天線/指示燈/連接線)	-	○	○	○	○	○
其他及其配件 (如：電源供應器)	-	○	○	○	○	○

備者1. "○" 係指該項限用物質之百分比含量未超出百分比含量標準值。
備者2. "-" 係指該項限用物質為排除項目。

報驗義務人：華碩電腦股份有限公司

地址：台北市北投區立德路15號1樓

ASUS

Quick Setup Guide

Gigabit VPN Router Router Gigabit VPN

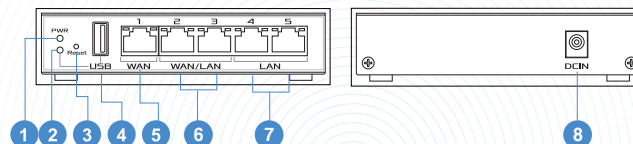
Gigabit VPN 路由器

ASUS ExpertWiFi EBG15

Router Overview

Descripciyn general del enrutador

路由器概覽



- | | |
|-----------------------|---------------------|
| 1 Power LED | 1 電源指示燈 |
| 2 USB 3.2 Gen 1 LED | 2 USB 3.2 Gen 1 指示燈 |
| 3 Reset button | 3 重置按鈕 |
| 4 USB 3.2 Gen 1 port | 4 USB 3.2 Gen 1 連接埠 |
| 5 WAN (Internet) port | 5 WAN (網際網路) 連接埠 |
| 6 WAN/LAN ports | 6 WAN/LAN 連接埠 |
| 7 LAN ports | 7 LAN 連接埠 |
| 8 Power (DCIN) port | 8 電源 (DCIN) 連接孔 |

* For detailed information, please refer to <https://asus.click/ExpertWiFiEBG15>



規格 / Specifications :

DC Power adaptor 直流電源變壓器	DC Output: +12V with max 1.5A DC 輸出: +12V 電壓 最大電流 1.5A	LED Indicators / LED 指示燈	
Operating Temperature 運作溫度	0-40°C	Speed LED (Green) 速度指示燈 (綠色)	Link/Act LED (Amber) Link/Act 指示燈 (琥珀色)
Operating Humidity 運作濕度	50-90%	1G ON 燈亮	1G/100M/10M Blinking 閃爍
	Storage 儲存溫度	100M/10M OFF 燈滅	No Traffic 無資料傳輸 ON 燈亮
	Storage 儲存濕度		

1

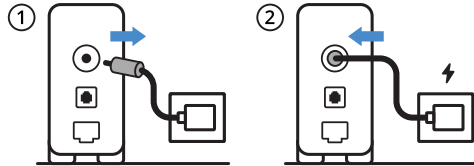
Reboot modem and ensure its connection is ready

Reiniciar el módem y asegurarse de que su conexión está lista
 請重新啟動數據機，並確保其已準備就緒，可以進行網路連線

Notice: Unplug modem for 10 sec then plug back in

Aviso: Desenchufe el módem durante 10 segundos y vuelva a enchufarlo

注意：請拔下數據機的電源插頭 10 秒，然後再插回



2

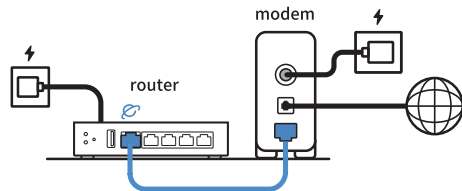
Prepare your ASUS router and power it on

Prepara tu enrutador ASUS y enciéndelo
 準備好您的華碩路由器並開機

Once the power LED lights up, it's ready for setup

Una vez que la luz de estado es azul fijo, está listo para la instalación

當電源指示燈亮起時，可以準備開始安裝



3

[App] Scan the code and download ASUS ExpertWiFi app for setup
[App] Scannez le code et téléchargez l'application ASUS ExpertWiFi pour la configuration

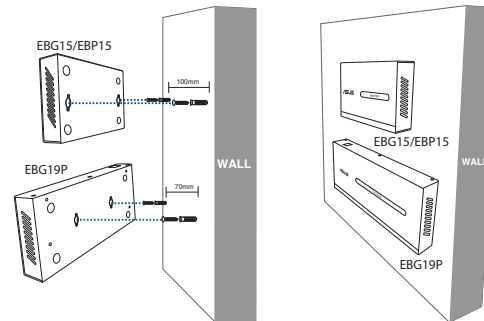
[App] 掃描此 code 並下載 ASUS ExpertWiFi App 以進行網路設定



[Web] Open a web browser and navigate to <http://expertwifi.net> for web setup

[Web] Abra un navegador web y navegue a <http://expertwifi.net> para la instalación de la web.

[網頁] 開啟網頁瀏覽器並至 <http://expertwifi.net> 進行網頁設定。

Support Wall Mount

IMPORTANT! DO NOT mount this equipment higher than 2 meters.

NOTE: It is recommended to use screws with a size of PA5.7*2mm.

¡IMPORTANTE! NO coloque este equipo a una altura mayor que los 2 metros.

NOTA: Se recomienda utilizar tornillos de tamaño PA5.7*2mm.

重要! 本產品適用於安裝高度 ≤2m。

注意: 建議使用尺寸為 PA5.7*2mm 的螺絲。

ASUS Recycling/Takeback Services

ASUS recycling and takeback programs come from our commitment to the highest standards for protecting our environment. We believe in providing solutions for you to be able to responsibly recycle our products, batteries, other components, as well as the packaging materials. Please go to <http://csr.asus.com/english/Takeback.htm> for the detailed recycling information in different regions.

REACH

Complying with the REACH (Registration, Evaluation, Authorisation, and Restriction of Chemicals) regulatory framework, we published the chemical substances in our products at ASUS REACH website at <http://csr.asus.com/english/REACH.htm>

Federal Communications Commission Statement

This device complies with Part 15 of the FCC Rules. Operation is subject to the following two conditions:

- This device may not cause harmful interference.
- This device must accept any interference received, including interference that may cause undesired operation.

This equipment has been tested and found to comply with the limits for a class B digital device, pursuant to part 15 of the FCC Rules. These limits are designed to provide reasonable protection against harmful interference in a residential installation.

This equipment generates, uses and can radiate radio frequency energy and, if not installed and used in accordance with the instructions, may cause harmful interference to radio communications. However, there is no guarantee that interference will not occur in a particular installation. If this equipment does cause harmful interference to radio or television reception, which can be determined by turning the equipment off and on, the user is encouraged to try to correct the interference by one or more of the following measures:

- Reorient or relocate the receiving antenna.
- Increase the separation between the equipment and receiver.
- Connect the equipment into an outlet on a circuit different from that to which the receiver is connected.
- Consult the dealer or an experienced radio/TV technician for help.

FCC RF Caution Statement

WARNING: Any changes or modifications not expressly approved by the party responsible for compliance could void your authority to operate the equipment.