



USB-N66
Dual-band Wireless-N Adapter
(For 802.11a/b/g/n Wireless Networks)



User Manual

E7253

First Edition
March 2012

Copyright © 2012 ASUSTeK Computer Inc. All Rights Reserved.

No part of this manual, including the products and software described in it, may be reproduced, transmitted, transcribed, stored in a retrieval system, or translated into any language in any form or by any means, except documentation kept by the purchaser for backup purposes, without the express written permission of ASUSTeK Computer Inc. ("ASUS").

Product warranty or service will not be extended if: (1) the product is repaired, modified or altered, unless such repair, modification or alteration is authorized in writing by ASUS; or (2) the serial number of the product is defaced or missing.

ASUS PROVIDES THIS MANUAL "AS IS" WITHOUT WARRANTY OF ANY KIND, EITHER EXPRESS OR IMPLIED, INCLUDING BUT NOT LIMITED TO THE IMPLIED WARRANTIES OR CONDITIONS OF MERCHANTABILITY OR FITNESS FOR A PARTICULAR PURPOSE. IN NO EVENT SHALL ASUS, ITS DIRECTORS, OFFICERS, EMPLOYEES OR AGENTS BE LIABLE FOR ANY INDIRECT, SPECIAL, INCIDENTAL, OR CONSEQUENTIAL DAMAGES (INCLUDING DAMAGES FOR LOSS OF PROFITS, LOSS OF BUSINESS, LOSS OF USE OR DATA, INTERRUPTION OF BUSINESS AND THE LIKE), EVEN IF ASUS HAS BEEN ADVISED OF THE POSSIBILITY OF SUCH DAMAGES ARISING FROM ANY DEFECT OR ERROR IN THIS MANUAL OR PRODUCT.

SPECIFICATIONS AND INFORMATION CONTAINED IN THIS MANUAL ARE FURNISHED FOR INFORMATIONAL USE ONLY, AND ARE SUBJECT TO CHANGE AT ANY TIME WITHOUT NOTICE, AND SHOULD NOT BE CONSTRUED AS A COMMITMENT BY ASUS. ASUS ASSUMES NO RESPONSIBILITY OR LIABILITY FOR ANY ERRORS OR INACCURACIES THAT MAY APPEAR IN THIS MANUAL, INCLUDING THE PRODUCTS AND SOFTWARE DESCRIBED IN IT.

Products and corporate names appearing in this manual may or may not be registered trademarks or copyrights of their respective companies, and are used only for identification or explanation and to the owners' benefit, without intent to infringe.

Table of contents

1. Introduction.....	4
Package contents	4
System requirements	4
Hardware	4
A quick look	4
Mounting options.....	5
Operating and storage environment.....	5
Status indicator	5
2. Installing the USB-N66 driver and utilities.....	6
3. Configuring USB-N66 using ASUS utility	7
Connecting to a wireless network manually	7
Connecting to a wireless network using WPS.....	8
Soft AP mode (Windows® XP/Vista/7).....	10
4. Software information.....	12
ASUS WLAN Control Center	12
ASUS WLAN Adapter Setting Utility.....	12
ASUS WLAN Adapter Setting Utility	12
Survey	13
Configuration- Basic	14
Configuration - Encryption.....	15
Configuration - Advanced	16
5. Configuring USB-N66 using Windows® WZC service	17
6. Troubleshooting	18
7. Glossary.....	20
Notices	30



1. Introduction

Package contents

- | | |
|--|--|
| <input checked="" type="checkbox"/> ASUS USB-N66 x1 | <input checked="" type="checkbox"/> Warranty card x1 |
| <input checked="" type="checkbox"/> Quick Start Guide x1 | <input checked="" type="checkbox"/> USB cable x1 |
| <input checked="" type="checkbox"/> Support CD x1 | |



NOTE: If any of the above items is damaged or missing, contact your retailer immediately.

System requirements

Before using the USB-N66 WLAN Adapter, check if your system meets the following requirements:

- Windows® XP/Vista/7
- 512MB system memory or larger
- USB 2.0 port
- Optical disk drive

A quick look



- 1) High/Standard Power Switch (slide the switch to the left or to the right to use standard power or high power)
- 2) USB port
- 3) LED indicator
- 4) Air vents
- 5) Mounting hole
- 6) WPS button



Mounting options

Out of the box, the ASUS USB-N66 is designed to sit on a raised flat surface like a file cabinet or book shelf. The unit may also be converted for mounting to a wall or ceiling.

1. Look on the underside for the mounting hook.
2. Mark an upper hole in a flat surface.
3. Tighten one screw until only 1/4" is showing.
4. Latch the hook of your USB-N66 onto the screw.



NOTES:

- Re-adjust the screw if you cannot latch USB-N66 onto the screw or if it is too loose.
- The screw is not included in the USB-N66 package contents.

Operating and storage environment

1. Operating temperature: ambient temperature between 0°C ~ 40°C
2. Storage temperature: ambient temperature between -10°C ~ 70°C
3. Humidity: 5% ~ 90% (non-condensing)

Status indicator

LED	Status	Description
Link	High	The USB-N66 has connected to a wireless network successfully.
	Low	The USB-N66 is not connected .
	Blinking	WPS function is enabled. Wait for about two minutes for WPS function to establish the connection.

Enabling the WPS (for Windows® OS only)

To enable the WPS feature, you may either press the WPS button on the USB-N66 or select **Use the WPS button** in the USB-N66's web interface.



2. Installing the USB-N66 driver and utilities



IMPORTANT: Install the ASUS USB-N66 into your computer before installing the driver and utilities from the bundled Support CD.

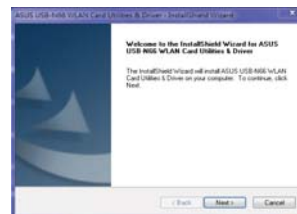
To install the driver and utilities for your ASUS USB-N66:

1. Place the bundled Support CD into the optical drive. An Autorun screen appears if the Autorun function is enabled on your computer.

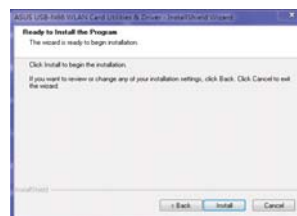
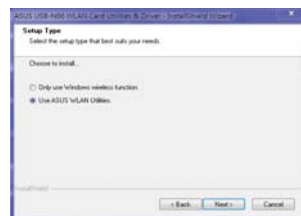


NOTE: If the Autorun function is not enabled on your computer, double-click **SETUP.EXE** from the root directory to run the Support CD.

2. From the Autorun screen, select your language and click **Install Utilities/Driver**.
3. An **InstallShield Wizard** screen appears. Click **Next** to continue.

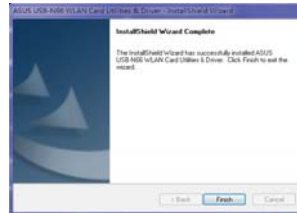


4. Select **Use ASUS WLAN Utilities**.
5. Click **Install** to start the installation.





- Click **Finish** to complete the installation.

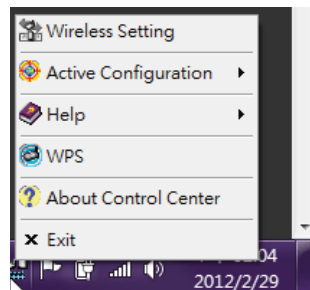


3. Configuring USB-N66 using ASUS utility

Connecting to a wireless network manually

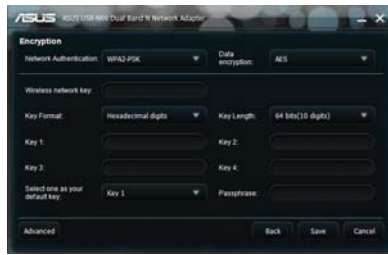
To connect USB-N66 to a station (Ad Hoc mode) manually:

- Right-click the ASUS WLAN Adapter Setting Utility icon in the Windows® system tray, then select **Wireless Setting**.
- You may click **Survey > Search** to search for the wireless networks. Select an Access Point (AP) from the network list and then click **Connect**.



- If Security is enabled on the AP or station, do the same security settings on your WLAN adapter as those on the AP or station. Click **Save**.

Setup is completed. The **Status** page displays information such as the association state, current data rate, and radio state.



Connecting to a wireless network using WPS

ASUS USB-N66 supports the WPS function that helps you set up a secure wireless network easily.



IMPORTANT: Ensure that the AP you are trying to connect to supports the WPS function.

To connect USB-N66 to a WPS-enabled AP using the WPS push button:

- Click the **WPS** tab.
- Select **Use the WPS button**, then click **Next**.





3. Press the WPS button on the AP or station to establish a wireless connection.
4. Click **Finish**.

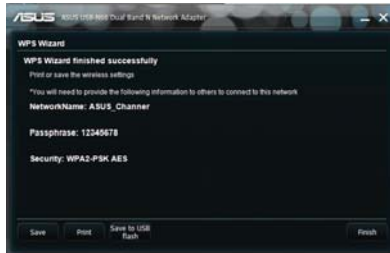


To connect USB-N66 to a WPS-enabled AP or station using the PIN code:

1. Select **Use PIN code**.
2. Key in the AP's eight-digit PIN code and click **Next**.



3. Click **Finish**.





Soft AP mode (Windows® XP/Vista/7)

ASUS USB-N66 supports the Soft AP mode. In this mode, the USB-N66 acts as a virtual AP.



IMPORTANT: Before configuring the Soft AP mode, connect your host computer to a wired network to provide internet network access for your wireless clients.

To switch to the Soft AP mode:

1. Click **AP** to switch to the Soft AP mode. The right picture indicates that your WLAN adapter has switched to the Soft AP mode successfully.

The **General** tab displays the wireless clients that are currently connecting to the USB-N66 in Soft AP.

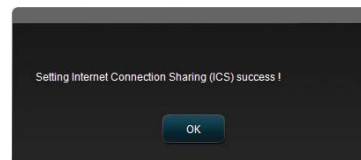


2. Click **General** tab and then click **ICS**. The **Available Networks** table displays the current networks that can serve as Soft AP's internet network access.

Select a network (station) from the available network list, then click **Apply**.



The picture indicates that you have set ICS (Internet connection Sharing) successfully.



NOTE: In the Soft AP mode, the ASUS WLAN Adapter Setting Utility icon  in the system tray switches to .



In the Soft AP mode, you can limit the wireless clients that associate with the USB-N66 through the access control function. Click **Configuration > Edit Config > Wireless Mode**.



You can limit the wireless clients that associate with the WLAN adapter through the access control function. Click **Configuration > Edit Config > ACL**.



To disable the access control function, select **Disable** in the **Access Control Policy** page, then click **OK**.

To allow a wireless client to associate with the USB-N66:

1. Select **Enable** in the **Access Control Policy** page, then click **Access** tab.
2. Key in the client's MAC address, then click **Add MAC**.
3. Click **OK**.

Only the wireless clients on the Accept list are allowed to associate with the USB-N66.

To prevent a wireless client from associating with the WLAN adapter:

1. Select **Enable** in the **Access Control Policy** page, then click **Reject** tab.
2. Key in the client's MAC address, then click **Add MAC**.
3. Click **OK**.

The wireless clients on the Reject list are not allowed to associate with the USB-N66.



4. Software information

ASUS WLAN Control Center

ASUS WLAN Control Center includes ASUS WLAN Adapter Setting Utility (Station mode) and ASUS Wireless Access Point Utility (Soft AP mode) which help you manage your WLAN adapter easily.

ASUS WLAN Adapter Setting Utility

ASUS WLAN Adapter Setting Utility provides you with an easy interface to set up wireless connections. This section explains the buttons, fields, and configuration options on the user interface.

To launch WLAN utility, click **Start > All Programs > ASUS Utility > USB-N66 WLAN Adapter Utilities > ASUS USB-N66 WLAN Control Center**.

In the default Station mode, the ASUS WLAN Adapter Setting Utility icon displays as shown on the right.



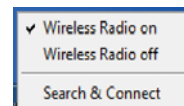
ASUS WLAN Adapter Setting Utility

Right-click the ASUS WLAN Adapter Setting Utility system tray icon to display the following options:

- **Wireless Settings** - Launches the ASUS WLAN Adapter Setting Utility.
- **Activate Configuration** - Activates a preset profile.
- **Help** - Launches the help file.
- **WPS** - Launches the WPS wizard.
- **About Control Center** - Displays the version of your Control Center.
- **Exit Control Center** - Closes the ASUS WLAN Control Center.

Left-click the ASUS WLAN Adapter Setting Utility system tray icon to display the following options:

- **Wireless Radio On** - Turns the wireless radio ON.
- **Wireless Radio Off** - Turns the wireless radio OFF.
- **Search & Connect** - Displays the available wireless networks.



Double-click the icon to launch the ASUS WLAN Adapter Setting utility.



Survey

Survey displays the connection status:



- **SSID** - Displays the name of the wireless network that the WLAN adapter is connecting to.
- **MAC Address** - Indicates the hardware address of the WLAN adapter. A MAC address is a unique identifier assigned to networking devices. It consists of six groups of two hexadecimal digits (0 through 9 and A through F) separated by colons, e.g. 00:E0:18:F0:05:C0.
- **Channel** - Displays the channel of the wireless network.
- **Current Data Rate** - Displays the current data transmission rate.
- **Network Type** - Displays the WLAN adapter type such as infrastructure type.
- **Security** - Displays the encryption of the wireless networks.
- **Search** - Lists the wireless networks that the USB-N66 can connect to.



Configuration- Basic

• Network Type

- **Infrastructure** - Select the Infrastructure mode to establish a connection with an AP.

- **Ad Hoc** - Select the Ad Hoc mode to communicate with a station. An Ad Hoc network is formed quickly and easily without pre-planning. For example, you can share meeting notes among networked clients in a meeting room.



- **Action mode name & Network Name (SSID)** - Key in the SSID of an AP or a station you are trying to connect to. An SSID must be valid characters and have a maximum of 32 case sensitive characters, such as Wireless LAN.
- **Channel** - Select a radio channel for your WLAN adapter. In the Infrastructure mode, your WLAN adapter automatically selects the correct channel required to communicate with an AP and this field shows **Auto**. In the Ad Hoc mode, you are allowed to select a channel for your WLAN adapter. WLAN cards in the same network can communicate with each other if they have the same channel setting.



Notes:

- For 2.4GHz band, the radio channels you can use depend on the regulations in your country. In the United States (FCC) and Canada (IC), channels 1 to 11 are supported. In Europe (ETSI), channels 1 to 13 are supported. In Japan (MCK), channels 1 to 14 are supported.
- For 5GHz band, the radio channels you can use vary in different regions. Refer to your local regulations for details.
- **Data Rate - Fully Auto:** The WLAN adapter adjusts to the most suitable transmission rate automatically.
- **Advanced** - Launches the Advanced page. In most cases, you do not need to change the default values.
- **Next** - Launches the Encryption page.
- **Cancel** - Cancels setting and returns to **Configuration** page.



Configuration - Encryption

The Encryption page allows you to set up the encryption settings for your WLAN adapter. For data confidentiality in a wireless environment, IEEE 802.11 specifies a Wired Equivalent Privacy (WEP) algorithm to offer transmission privacy similar to wired network. WEP uses keys to encrypt data packets sent and decrypt data packets received. The encryption process can scramble frame bits to avoid disclosure to others. Wi-Fi Protected Access (WPA) is an improved security system for 802.11 that encrypts data sent over radio waves. WPA is developed to overcome the weakness of the WEP protocol.



- **Network Authentication** - Set up authentication for your WLAN adapter. Options are:
 - **Open** - Sets the network operating in the Open System mode that disables authentication protection for the network or use the WEP encryption for the network.
 - **Shared** - Sets the network operating in the Shared Key mode that uses the WEP encryption for your network.
 - **WPA-Personal/WPA2-Personal** - Use the WPA Pre-Shared Key/WPA2 Pre-Shared Key in the Infrastructure mode for authentication.
 - **WPA/WPA2-Enterprise/WEP 802.1X** - Set these authentication modes in the Infrastructure mode (needs to add a RADIUS server to confirm the user's identity). Two Extensible Authentication Protocol (EAP) are supported in the RADIUS environment, including PEAP and TLS/Smart Card.

- **Data Encryption** - Encrypts the data before it is transmitted over the air.

In the Open and Shared authentication modes, options are Disabled and WEP.

- **Disabled** - Disables the encryption protection for your WLAN adapter.
- **WEP** - When you select this option, the cursor appears in the field for Key 1. Key in 10 hexadecimal digits (0~9, a~f, and A~F) for the 64-bit encryption.

In the WPA-PSK and WPA-Personal and WPA2-Personal authentication modes, options are: Temporal Key Integrity Protocol (TKIP) and Advanced Encryption Standard (AES).

- **TKIP** - Dynamically generates unique keys to encrypt data packet.
- **AES** - Offers stronger protection and increases the complexity of



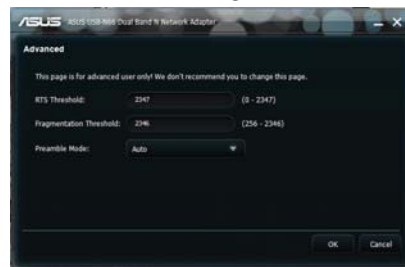
wireless encryption. It is a symmetric 128-bit block encryption method that works simultaneously on multiple network layers.

- **Wireless Network Key** - This option becomes configurable when you select the WPA-Personal authentication mode. Key in 8 to 63 characters in this field.



Note: The characters can also consist of 64 hexadecimal digits.

- **Wireless Network Key (WEP)** - This option becomes configurable when you select WEP in the Data encryption field. 64-bit WEP key uses 5 ASCII characters (10 hexadecimal digits). 128-bit WEP key uses 13 ASCII (26 hexadecimal digits).
 - **Key Format** - Allows you to select the key format.
 - **Passphrase** - This field generates the WEP keys (Key 1 - Key 4). The passphrase can consists of a sentence, a phrase, or a sequence of alphanumeric characters .
 - **Key Length** - Allows you to select the key length. For 64-bit encryption, each key consists of 10 hexadecimal digits or 5 ASCII characters. For 128-bit encryption, each key consists of 26 hexadecimal digits or 13 ASCII characters.
 - **Select one as your Default Key** - Allows you to select one of the four WEP Keys as the default key.



Configuration - Advanced

This Advanced page is intended for experienced users to set up additional parameters for the WLAN adapter. We recommend that you keep the default values.

- **RTS Threshold (0-2347)** - The Request to Send/Clear to Send (RTS/CTS) function is used to minimize collisions among wireless stations. When RTS/CTS is enabled, the router refrains from sending a data frame until another RTS/CTS handshake is completed. To enable RTS/CTS, set a specific packet size threshold. The default value (2347) is recommended.
- **Fragmentation Threshold (256-2346)** - Fragmentation is used to divide 802.11 frames into smaller pieces (fragments) that are sent separately to the destination. To enable fragmentation, set a specific packet size threshold. If there is an excessive number of collisions on the WLAN, experiment with different fragmentation values to increase the reliability of frame transmissions. The default value (2346) is recommended for normal use.
- **Preamble Mode** - Select the preamble mode as Auto (default), Long or Short.

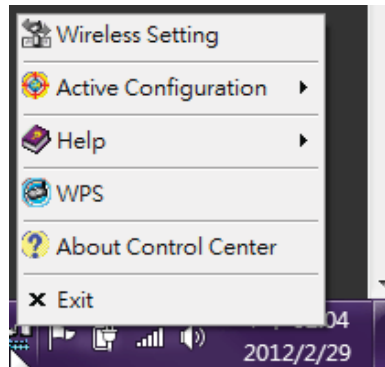


5. Configuring USB-N66 using Windows® WZC service

To connect your USB-N66 to a wireless network using Windows® WZC service:

1. Right-click the ASUS WLAN Control Center system tray icon, then click **Exit**. ASUS WLAN Control Center will be switched off.

Click **Windows Wireless** to use it.





6. Troubleshooting

This chapter provides solutions to problems which you may encounter when installing or using ASUS USB-N66. Contact a qualified service technician for assistance if the problem still exists after you have performed the troubleshooting solutions.

How do I verify that my WLAN adapter is installed properly?

1. Right-click **My Computer** from the **Start** menu, then select **Properties**.
2. Select the **Hardware** tab, then click **Device Manager**.
3. Double-click **Network adapters**.
4. Double-click **ASUS USB-N66 450Mbps Dual Band USB Adapter**. An **ASUS USB-N66 450Mbps Dual Band USB Adapter** window appears.
5. Check **Device status** to see if the WLAN adapter is working properly.

My WLAN adapter cannot connect to any Access Points.

- Check if **Network Type** is set to the **Infrastructure** mode.
- Check if the **SSID** of your WLAN adapter is the same as that of the access point you want to connect to.
- Check if the **Encryption** settings of your WLAN adapter are the same as those of the access point you want to connect to.

My WLAN adapter cannot connect to a station or WLAN adapter.

- Check if **Network Type** is set to the **Ad Hoc** mode.
- Check if the **SSID** of your WLAN adapter is the same as that of the station or the WLAN adapter you want to connect to.
- Check if the **Channel** of your WLAN adapter is the same as that of the station or the WLAN adapter you want to connect to.
- Check if the **Encryption** settings of your WLAN adapter are the same as those of the station or the WLAN adapter you want to connect to.

The connection quality is bad and the signal strength is weak.

- Keep your WLAN adapter away from microwave ovens and large metal objects to avoid radio interference.
- Move your WLAN adapter closer to the access point, station, or WLAN adapter you want to connect to.



The TCP/IP protocol does not bind to the WLAN adapter.

This occurs when your PC already has six TCP/IP bindings in Windows® 98 or ten bindings in Windows® Me. These limits are imposed by the Microsoft® operating system.

Solution: If your computer already has the maximum number of TCP/IP bindings, remove one of the network adapters from the Network configuration before installing the WLAN adapter driver.



7. Glossary

Access Point (AP)

A networking device that seamlessly connects wired and wireless networks. Access Points combined with a distributed system support the creation of multiple radio cells that enable roaming throughout a facility.

Ad Hoc

A wireless network composed solely of stations within mutual communication range of each other (no Access Point).

Basic Rate Set

This option allows you to specify the data transmission rate.

Basic Service Area (BSS)

A set of stations controlled by a single coordination function.

Broadband

A type of data transmission in which a single medium (such as cable) carries several data at once.

Channel

An instance of medium use for the purpose of passing protocol data units that may be used simultaneously, in the same volume of space, with other instances of medium use (on other channels) by other instances of the same physical layer, with an acceptably low frame error ratio due to mutual interference.

Client

A client is the desktop or mobile PC that is connected to your network.



COFDM (for 802.11a or 802.11g)

Signal power alone is not enough to maintain 802.11b-like distances in an 802.11a/g environment. To compensate, a new physical-layer encoding technology was designed that departs from the traditional direct-sequence technology being deployed today. This technology is called COFDM (coded OFDM). COFDM was developed specifically for indoor wireless use and offers performance much superior to that of spread-spectrum solutions. COFDM works by breaking one high-speed data carrier into several lowerspeed subcarriers, which are then transmitted in parallel. Each high-speed carrier is 20MHz wide and is broken up into 52 subchannels, each approximately 300KHz wide. COFDM uses 48 of these subchannels for data, while the remaining four are used for error correction. COFDM delivers higher data rates and a high degree of multipath reflection recovery, thanks to its encoding scheme and error correction.

Each subchannel in the COFDM implementation is about 300KHz wide. At the low end of the speed gradient, BPSK (binary phase shift keying) is used to encode 125Kbps of data per channel, resulting in a 6,000Kbps, or 6Mbps, data rate. Using quadrature phase shift keying, you can double the amount of data encoded to 250Kbps per channel, yielding a 12Mbps data rate. And by using 16-level quadrature amplitude modulation encoding 4bits per hertz, you can achieve a data rate of 24Mbps. The 802.11a/g standard specifies that all 802.11a/g-compliant products must support these basic data rates. The standard also lets the vendor extend the modulation scheme beyond 24Mbps. Remember, the more bits per cycle (hertz) that are encoded, the more susceptible the signal will be to interference and fading, and ultimately, the shorter the range, unless power output is increased.

Default Key

This option allows you to select the default WEP key. This option allows you to use WEP keys without having to remember or write them down. The WEP keys generated using the Pass Phrase is compatible with other WLAN products. The Pass Phrase option is not as secure as manual assignment.

Device Name

Also known as DHCP client ID or network name. Sometimes provided by an ISP when using DHCP to assign addresses.

DHCP (Dynamic Host Configuration Protocol)

This protocol allows a computer (or many computers on your network) to be automatically assigned a single IP address from a DHCP server.



DNS Server Address (Domain Name System)

DNS allows Internet host computers to have a domain name and one or more IP addresses. A DNS server keeps a database of host computers and their respective domain names and IP addresses, so that when a user enters a domain name into the Internet browser, the user is sent to the proper IP address. The DNS server address used by the computers on your home network is the location of the DNS server your ISP has assigned.

DSL Modem (Digital Subscriber Line)

A DSL modem uses your existing phone lines to transmit data at high speeds.

Direct-Sequence Spread Spectrum (for 802.11b)

Spread spectrum (broadband) uses a narrowband signal to spread the transmission over a segment of the radio frequency band or spectrum. Direct-sequence is a spread spectrum technique where the transmitted signal is spread over a particular frequency range.

Direct-sequence systems communicate by continuously transmitting a redundant pattern of bits called a chipping sequence. Each bit of transmitted data is mapped into chips and rearranged into a pseudorandom spreading code to form the chipping sequence. The chipping sequence is combined with a transmitted data stream to produce the output signal.

Wireless mobile clients receiving a direct-sequence transmission use the spreading code to map the chips within the chipping sequence back into bits to recreate the original data transmitted by the wireless device. Intercepting and decoding a direct-sequence transmission requires a predefined algorithm to associate the spreading code used by the transmitting wireless device to the receiving wireless mobile client.

This algorithm is established by IEEE 802.11b specifications. The bit redundancy within the chipping sequence enables the receiving wireless mobile client to recreate the original data pattern, even if bits in the chipping sequence are corrupted by interference. The ratio of chips per bit is called the spreading ratio. A high spreading ratio increases the resistance of the signal to interference. A low spreading ratio increases the bandwidth available to the user. The wireless device uses a constant chip rate of 11Mchips/s for all data rates, but uses different modulation schemes to encode more bits per chip at the higher data rates. The wireless device is capable of an 11 Mbps data transmission rate, but the coverage area is less than a 1 or 2 Mbps wireless device since coverage area decreases as bandwidth increases.



Encryption

This provides wireless data transmissions with a level of security. This option allows you to specify a 64-bit or a 128-bit WEP key. A 64-bit encryption contains 10 hexadecimal digits or 5 ASCII characters. A 128-bit encryption contains 26 hexadecimal digits or 13 ASCII characters.

64-bit and 40-bit WEP keys use the same encryption method and can interoperate on wireless networks. This lower level of WEP encryption uses a 40-bit (10 hexadecimal digits assigned by the user) secret key and a 24-bit Initialization Vector assigned by the device. 104-bit and 128-bit WEP keys use the same encryption method.

All wireless clients in a network must have identical WEP keys with the access point to establish connection. Keep a record of the WEP encryption keys.

Extended Service Set (ESS)

A set of one or more interconnected basic service set (BSSs) and integrated local area networks (LANs) can be configured as an Extended Service Set.

ESSID (Extended Service Set Identifier)

You must have the same ESSID entered into the gateway and each of its wireless clients. The ESSID is a unique identifier for your wireless network.

Ethernet

The most widely used LAN access method, which is defined by the IEEE 802.3 standard. Ethernet is normally a shared media LAN meaning all devices on the network segment share total bandwidth. Ethernet networks operate at 10Mbps using CSMA/CD to run over 10-BaseT cables.

Firewall

A firewall determines which information passes in and out of a network. NAT can create a natural firewall by hiding a local network's IP addresses from the Internet. A Firewall prevents anyone outside of your network from accessing your computer and possibly damaging or viewing your files.

Gateway

A network point that manages all the data traffic of your network, as well as to the Internet and connects one network to another.

ICS

ICS is used to share one computer's Internet connection with the rest of the computers on your network. When this computer is connected to the Internet, all the communications to and from the Internet on your network are sent through this computer which is called the host computer. The rest of the computers can send and receive e-mail messages and access the web as if it were connected directly to the Internet.



IEEE

The Institute of Electrical and Electronics Engineers. The IEEE sets standards for networking, including Ethernet LANs. IEEE standards ensure interoperability between systems of the same type.

IEEE 802.11

IEEE 802.xx is a set of specifications for LANs from the Institute of Electrical and Electronic Engineers (IEEE). Most wired networks conform to 802.3, the specification for CSMA/CD based Ethernet networks or 802.5, the specification for token ring networks. 802.11 defines the standard for wireless LANs encompassing three incompatible (non-interoperable) technologies: Frequency Hopping Spread Spectrum (FHSS), Direct Sequence Spread Spectrum (DSSS), and Infrared. 802.11 specifies a carrier sense media access control and physical layer specifications for 1 and 2 Mbps wireless LANs.

IEEE 802.11a (54Mbps/sec)

Compared with 802.11b: The 802.11b standard was designed to operate in the 2.4GHz ISM (Industrial, Scientific and Medical) band using direct-sequence spread spectrum technology. The 802.11a standard, on the other hand, was designed to operate in the more recently allocated 5-GHz UNII (Unlicensed National Information Infrastructure) band. And unlike 802.11b, the 802.11a standard departs from the traditional spread-spectrum technology, instead using a frequency division multiplexing scheme that's intended to be friendlier to office environments.

The 802.11a standard, which supports data rates of up to 54 Mbps, is the Fast Ethernet analog to 802.11b, which supports data rates of up to 11 Mbps. Like Ethernet and Fast Ethernet, 802.11b and 802.11a use an identical MAC (Media Access Control). However, while Fast Ethernet uses the same physical-layer encoding scheme as Ethernet (only faster), 802.11a uses an entirely different encoding scheme, called OFDM (orthogonal frequency division multiplexing).

The 802.11b spectrum is plagued by saturation from wireless phones, microwave ovens and other emerging wireless technologies, such as Bluetooth. In contrast, 802.11a spectrum is relatively free of interference.

The 802.11a standard gains some of its performance from the higher frequencies at which it operates. The laws of information theory tie frequency, radiated power and distance together in an inverse relationship. Thus, moving up to the 5GHz spectrum from 2.4GHz will lead to shorter distances, given the same radiated power and encoding scheme.



Compared with 802.11g

802.11a is a standard for access points and radio NICs that is ahead of 802.11g in the market by about six months. 802.11a operates in the 5GHz frequency band with twelve separate non-overlapping channels. As a result, you can have up to twelve access points set to different channels in the same area without them interfering with each other. This makes access point channel assignment much easier and significantly increases the throughput the wireless LAN can deliver within a given area. In addition, RF interference is much less likely because of the less-crowded 5GHz band.

IEEE 802.11b (11Mbps/sec)

In 1997, the Institute of Electrical and Electronics Engineers (IEEE) adopted the 802.11 standard for wireless devices operating in the 2.4 GHz frequency band. This standard includes provisions for three radio technologies: direct sequence spread spectrum, frequency hopping spread spectrum, and infrared. Devices that comply with the 802.11 standard operate at a data rate of either 1 or 2 Mbps.

In 1999, the IEEE created the 802.11b standard. 802.11b is essentially identical to the 802.11 standard except 802.11b provides for data rates of up to 11Mbps for direct sequence spread spectrum devices. Under 802.11b, direct sequence devices can operate at 11Mbps, 5.5Mbps, 2Mbps, or 1Mbps. This provides interoperability with existing 802.11 direct sequence devices that operate only at 2Mbps.

Direct sequence spread spectrum devices spread a radio signal over a range of frequencies. The IEEE 802.11b specification allocates the 2.4GHz frequency band into 14 overlapping operating Channels. Each Channel corresponds to a different set of frequencies.

IEEE 802.11g

802.11g is a new extension to 802.11b (used in majority of wireless LANs today) that broadens 802.11b's data rates to 54 Mbps within the 2.4 GHz band using OFDM (orthogonal frequency division multiplexing) technology. 802.11g allows backward compatibility with 802.11b devices but only at 11 Mbps or lower, depending on the range and presence of obstructions.

Infrastructure

A wireless network centered about an access point. In this environment, the access point not only provides communication with the wired network but also mediates wireless network traffic in the immediate neighborhood.



IP (Internet Protocol)

The TCP/IP standard protocol that defines the IP datagram as the unit of information passed across an Internet and provides the basis for connectionless packet delivery service. IP includes the ICMP control and error message protocol as an integral part. It provides the functional equivalent of ISO OSI Network Services.

IP Address

An IP address is a 32-bit number that identifies each sender or receiver of information that is sent across the Internet. An IP address has two parts: the identifier of a particular network on the Internet and an identifier of the particular device (which can be a server or a workstation) within that network.

ISM Bands (Industrial, Scientific, and Medicine Bands)

Radio frequency bands that the Federal Communications Commission (FCC) authorized for wireless LANs. The ISM bands are located at 902MHz, 2.400GHz, and 5.7GHz.

ISP (Internet Service Provider)

An organization that provides access to the Internet. Small ISPs provide service via modem and ISDN while the larger ones also offer private line hookups (T1, fractional T1, etc.).

LAN (Local Area Network)

A communications network that serves users within a defined geographical area. The benefits include the sharing of Internet access, files and equipment like printers and storage devices. Special network cabling (10 Base-T) is often used to connect the PCs together.

MAC Address (Media Access Control)

A MAC address is the hardware address of a device connected to a network.

NAT (Network Address Translation)

NAT masks a local network's group of IP addresses from the external network, allowing a local network of computers to share a single ISP account. This process allows all of the computers on your home network to use one IP address. This will enable access to the Internet from any computer on your home network without having to purchase more IP addresses from your ISP.



NIC (Network Interface Card)

A network adapter inserted into a computer so that the computer can be connected to a network. It is responsible for converting data from stored in the computer to the form transmitted or received.

Packet

A basic message unit for communication across a network. A packet usually includes routing information, data, and sometimes error detection information.

Pass Phrase

The Wireless Settings utility uses an algorithm to generate four WEP keys based on the typed combination.

PCMCIA (Personal Computer Memory Card International Association)

The Personal Computer Memory Card International Association (PCMCIA), develops standards for PC cards, formerly known as PCMCIA cards. These cards are available in three types, and are about the same length and width as credit cards. However, the different width of the cards ranges in thickness from 3.3 mm (Type I) to 5.0 mm (Type II) to 10.5 mm (Type III). These cards can be used for various functions, including memory storage, land line modems and wireless modems.

PPP (Point-to-Point Protocol)

PPP is a protocol for communication between computers using a serial interface, typically a personal computer connected by phone line to a server. PPPoE (Point-to-Point Protocol over Ethernet)

Point-to-Point Protocol is a method of secure data transmission. PPP using Ethernet to connect to an ISP.

Preamble

Allows you to set the preamble mode for a network to Long, Short, or Auto. The default preamble mode is Long.

Radio Frequency (RF) Terms: GHz, MHz, Hz

The international unit for measuring frequency is Hertz (Hz), equivalent to the older unit of cycles per second. One megahertz (MHz) is one million Hertz. One gigahertz (GHz) is one billion Hertz. The standard US electrical power frequency is 60Hz, the AM broadcast radio frequency band is 0.55-1.6MHz, the FM broadcast radio frequency band is 88-108MHz, and wireless 802.11 LANs operate at 2.4GHz.



SSID (Service Set Identifier)

SSID is a group name shared by every member of a wireless network. Only client PCs with the same SSID are allowed to establish a connection. Enabling the **Response to Broadcast SSID requests** option allows the device to broadcast its SSID in a wireless network. This allows other wireless devices to scan and establish communication with the device. Unchecking this option hides the SSID to prevent other wireless devices from recognizing and connecting to the device.

Station

Any device containing IEEE 802.11 wireless medium access conformity.

Subnet Mask

A subnet mask is a set of four numbers configured like an IP address. It is used to create IP address numbers used only within a particular network.

TCP (Transmission Control Protocol)

The standard transport level protocol that provides the full duplex, stream service on which many application protocols depend. TCP allows a process or one machine to send a stream of data to a process on another. Software implementing TCP usually resides in the operating system and uses the IP to transmit information across the network.

WAN (Wide Area Network)

A system of LANs, connected together. A network that connects computers located in separate areas, (i.e., different buildings, cities, countries). The Internet is a wide area network.

WECA (Wireless Ethernet Compatibility Alliance)

An industry group that certifies cross-vender interoperability and compatibility of IEEE 802.11b wireless networking prod WPA (Wi-Fi Protected Access)

WPA (Wi-Fi Protected Access)

Wi-Fi Protected Access (WPA) is an improved security system for 802.11. It is part of the 802.11i draft security standard. WPA encompasses TKIP (Temporal Key Integrity Protocol) along with MIC (Message Integrity Check) and other fixes to WEP such as Weak IV (Initialization Vector) filtering and Random IV generation. TKIP uses 802.1x to deploy and change temporary keys as opposed to static WEP keys once used in the past. It is a significant improvement over WEP. WPA is part of a complete security solution. WPA also requires authentication servers in enterprise security solutions.



Requirements

(1) A WPA compatible Access Point or Wireless router, (2) Operating system updates that support WPA. In XP, an updated Windows Zero Config service is needed. Users can download the Windows XP WPA patch here:

<http://microsoft.com/downloads/details.aspx?FamilyId=009D8425-CE2B-47A4-ABEC-274845DC9E91&displaylang=en>

Please note that this patch requires the installation Windows XP Service Pack 1, which is available here: <http://www.microsoft.com/WindowsXP/pro/downloads/servicepacks/sp1/default.asp>

For earlier Windows Operating systems, a WPA capable supplicant is required such as Funk Software's Odyssey Client.

WLAN (Wireless Local Area Network)

This is a group of computers and other devices connected wirelessly in a small area. A wireless network is referred to as LAN or WLAN.



Notices

Federal Communications Commission

This device complies with FCC Rules Part 15. Operation is subject to the following two conditions:

- This device may not cause harmful interference, and
- This device must accept any interference received, including interference that may cause undesired operation.

This equipment has been tested and found to comply with the limits for a class B digital device pursuant to part 15 of the FCC Rules. These limits are designed to provide reasonable protection against harmful interference in a residential installation. This equipment generates, uses and can radiate radio frequency energy and, if not installed and used in accordance with the instructions, may cause harmful interference to radio communications. However, there is no guarantee that interference will not occur in a particular installation. If this equipment does cause harmful interference to radio or television reception, which can be determined by turning the equipment off and on, the user is encouraged to try to correct the interference by one or more of the following measures:

- Reorient or relocate the receiving antenna.
- Increase the separation between the equipment and receiver.
- Connect the equipment into an outlet on a circuit different from that to which the receiver is connected.
- Consult the dealer or an experienced radio/TV technician for help.



WARNING: Any changes or modifications not expressly approved by the party responsible for compliance could void the user's authority to operate the equipment.

The operation frequency of the device in the 5150-5250 MHz band is for indoor use only.

Prohibition of Co-location

This device and its antenna(s) must not be co-located or operating in conjunction with any other antenna or transmitter.



FCC Radiation Exposure Statement

This equipment complies with RFCC radiation exposure limits set forth for an uncontrolled environment.

This equipment should be installed and operated with minimum 20cm between the radiator and your body.

CE Mark Warning

This is a Class B product, in a domestic environment, this product may cause radio interference, in which case the user may be required to take adequate measures.

Operation Channels: Ch1~11 for N. America, Ch1~14 Japan, Ch1~ 13 Europe (ETSI)

DGT Warning Statement

Article 12

Without permission, any company, firm or user shall not alter the frequency, increase the power, or change the characteristics and functions of the original design of the certified lower power frequency electric machinery.

Article 14

The application of low power frequency electric machineries shall not affect the navigation safety nor interfere a legal communication, if an interference is found, the service will be suspended until improvement is made and the interference no longer exists.

低功率電波輻射性電機管理辦法

(1) 「經型式認證合格之低功率射頻電機，非經許可，公司、商號或使用者均不得擅自變更頻率、加大功率或變更原設計之特性及功能」以及 (2) 「低功率射頻電機之使用不得影響飛航安全及干擾合法通信；經發現有干擾現象時，應立即停用，並改善至無干擾時方得繼續使用。前項合法通信，指依電信法規定作業之無線電通信。低功率射頻電機須忍受合法通信或工業、科學及醫療用電波輻射性電機設備之干擾」。



IC Warning Statement

Under Industry Canada regulations, this radio transmitter may only operate using an antenna of a type and maximum (or lesser) gain approved for the transmitter by Industry Canada. To reduce potential radio interference to other users, the antenna type and its gain should be so chosen that the equivalent isotropically radiated power (e.i.r.p.) is not more than that necessary for successful communication.

This radio transmitter(IC: 3568A-USB-N66) has been approved by Industry Canada to operate with the antenna types listed below with the maximum permissible gain and required antenna impedance for each antenna type indicated. Antenna types not included in this list, having a gain greater than the maximum gain indicated for that type, are strictly prohibited for use with this device.

This Class [B] digital apparatus complies with Canadian ICES-003.

Cet appareil numérique de la classe [B] est conforme à la norme NMB-003 du Canada.

For product available in the USA/Canada market, only channel 1~11 can be operated.

Selection of other channels is not possible.

IC Radiation Exposure Statement:

This equipment complies with IC RSS-102 radiation exposure limits set forth for an uncontrolled environment. This equipment should be installed and operated with minimum distance 20cm between the radiator & your body.

Operation is subject to the following two conditions: (1) this device may not cause interference, and (2) this device must accept any interference, including interference that may cause undesired operation of the device.

Canada, avis d'Industry Canada (IC)

Cet appareil numérique de classe B est conforme aux normes canadiennes ICES-003 et RSS-210.

Son fonctionnement est soumis aux deux conditions suivantes : (1) cet appareil ne doit pas causer d'interférence et (2) cet appareil doit accepter toute interférence, notamment les interférences qui peuvent affecter son fonctionnement.

Informations concernant l'exposition aux fréquences radio (RF)

La puissance de sortie émise par l'appareil de sans fil Dell est inférieure à la limite d'exposition aux fréquences radio d'Industry Canada (IC). Utilisez l'appareil de sans fil Dell de façon à minimiser les contacts humains lors du fonctionnement normal.

Ce périphérique a été évalué et démontré conforme aux limites SAR (Specific Absorption Rate – Taux d'absorption spécifique) d'IC lorsqu'il est installé dans des produits hôtes particuliers qui fonctionnent dans des conditions d'exposition à des appareils portables (les antennes se situent à moins de 20 centimètres du corps d'une personne).

Ce périphérique est homologué pour l'utilisation au Canada. Pour consulter l'entrée correspondant à l'appareil dans la liste d'équipement radio (REL - Radio Equipment List) d'Industry Canada rendez-vous sur:

<http://www.ic.gc.ca/app/sitt/reltel/srch/nwRdSrch.do?lang=eng>

Pour des informations supplémentaires concernant l'exposition aux RF au Canada rendez-vous sur : <http://www.ic.gc.ca/eic/site/smt-gst.nsf/eng/sf08792.html>



ASUS Recycling/Takeback Services

ASUS recycling and takeback programs come from our commitment to the highest standards for protecting our environment. We believe in providing solutions for you to be able to responsibly recycle our products, batteries, other components as well as the packaging materials. Please go to <http://csr.asus.com/english/Takeback.htm> for the detailed recycling information in different regions.

REACH

Complying with the REACH (Registration, Evaluation, Authorisation, and Restriction of Chemicals) regulatory framework, we published the chemical substances in our products at ASUS REACH website at <http://csr.asus.com/english/REACH.htm>.



ASUS Contact Information

ASUSTeK COMPUTER INC. (Asia Pacific)

Address 15 Li-Te Road, Peitou, Taipei, Taiwan 11259
Website www.asus.com.tw

Technical Support

Telephone +886228943447
Support Fax +886228907698
Online support support.asus.com

ASUS COMPUTER INTERNATIONAL (America)

Address 800 Corporate Way, Fremont, CA 94539, USA
Telephone +15029550883
Fax +15029338713
Website usa.asus.com
Online support support.asus.com

ASUS COMPUTER GmbH (Germany and Austria)

Address Harkort Str. 21-23, D-40880 Ratingen,
Germany
Fax +492102959911
Website www.asus.de
Online contact www.asus.de/sales

Technical Support

Telephone (Component) +491805010923*
Telephone (System/Notebook/Eee/LCD) +491805010920*
Fax +492102959911
Online support support.asus.com

* EUR 0.14/minute from a German fixed landline; EUR 0.42/minute from a mobile phone.



Manufacturer:	ASUSTeK Computer Inc. Tel: +886-2-2894-3447 Address: No. 150, LI-DE RD., PEITOU, TAIPEI 112, TAIWAN
Authorised representative in Europe:	ASUS Computer GmbH Address: HARKORT STR. 21-23, D-40880 RATINGEN, DEUTSCHLAND
Authorised distributors in Turkey:	BOGAZICI BIL GISAYAR SAN. VE TIC. A.S. Tel: +90 212 3311000 Address: AYAZAGA MAH. KEMERBURGAZ CAD. NO.10 AYAZAGA/ISTANBUL CIZGI Elektronik San. Tic. Ltd. Sti. Tel: +90 212 3567070 Address: CEMAL SURURI CD. HALIM MERIC IS MERKEZI No: 15/C D:5-6 34394 MECIDIYEKOY/ ISTANBUL

EEE Yönetmeliğine Uygundur.

ASUS USB-N66	
Network Standard	IEEE802.11a, IEEE802.11b, IEEE802.11g, IEEE802.11r
Interface	USB2.0
Antenna	3 * Internal Antenna (Dipole antenna)
Network Architecture Types	Infrastructure and ad-hoc
Operating Frequency	2.4 ~ 2.5 GHz, 5150~5825MHz
Operation Channels	11 for N. America, 13 Europe (ETSI), 14 Japan, 4 for UNII-1, 5 for UNII-3,
Data Rate	802.11n : Tx: 450Mbps (Max) / Rx: 450Mbps (Max) 802.11g : 54/48/36/24/18/12/9/6Mbps 802.11b : 11/5.5/2/1Mbps
Output Power (High Power)	11b 18 +/- 1 dBm 11g 18 +/- 1 dBm@54Mbps 11n 13~18 +/- 1 dBm 11a 18 +/- 1dBm
Output Power (Standard Power)	11b 16 +/- 1 dBm 11g 16 +/- 1 dBm@54Mbps 11n 11~16 +/- 1 dBm 11a 16+/-1 dBm
Receiver Sensitivity	(-94 dBm) @11 Mbps (-75 dBm) @54 Mbps (-72 dBm) @64-QAM, 20MHz channel spacing (-69 dBm) @64-QAM, 40MHz channel spacing
LED Indicator	Steady ON(high light): Radio On and Associated, Steady ON(low light): Radio On but not Link to AP Flash ON (high light) : WPS process
Modulation	OFDM: BPSK, QPSK, 16-QAM, 64-QAM, DBPSK, DQPSK, CCK
OS Support	Support OS Windows 2000/ XP(x86/x64)/ Vista(x86/x64)/ 7(x86/x64) Mac 10.4/10.5/10.6/ 10.7 Linux 2.4/ 2.6
Encryption	64/128-bit WEP, TKIP, AES, WPA-PSK, WPA2-PSK, 802.1x
Environmental Specification	Temperature: 0 ~ 40° C ambient Storage Temperature: -10 ~ 70 ° C ambient Humidity: 5 ~ 90% and must be non-condensing
Certifications	CE, FCC, IDA, IC, C-Tick
Package Content	USB-N66 Adapter x1, QSG x1, Suport CD x1, Warranty Card x1, USB Cable.

