



ASUS EZ N Network Adapter

USB-N10

(For 802.11b/g/n draft Networks)



User Manual

Copyright © 2008 ASUSTeK Computer Inc. All Rights Reserved.

No part of this manual, including the products and software described in it, may be reproduced, transmitted, transcribed, stored in a retrieval system, or translated into any language in any form or by any means, except documentation kept by the purchaser for backup purposes, without the express written permission of ASUSTeK COMPUTER INC. ("ASUS").

ASUS PROVIDES THIS MANUAL "AS IS" WITHOUT WARRANTY OF ANY KIND, EITHER EXPRESS OR IMPLIED, INCLUDING BUT NOT LIMITED TO THE IMPLIED WARRANTIES OR CONDITIONS OF MERCHANTABILITY OR FITNESS FOR A PARTICULAR PURPOSE. IN NO EVENT SHALL ASUS, ITS DIRECTORS, OFFICERS, EMPLOYEES OR AGENTS BE LIABLE FOR ANY INDIRECT, SPECIAL, INCIDENTAL, OR CONSEQUENTIAL DAMAGES (INCLUDING DAMAGES FOR LOSS OF PROFITS, LOSS OF BUSINESS, LOSS OF USE OR DATA, INTERRUPTION OF BUSINESS AND THE LIKE), EVEN IF ASUS HAS BEEN ADVISED OF THE POSSIBILITY OF SUCH DAMAGES ARISING FROM ANY DEFECT OR ERROR IN THIS MANUAL OR PRODUCT.

Product warranty or service will not be extended if: (1) the product is repaired, modified or altered, unless such repair, modification or alteration is authorized in writing by ASUS; or (2) the serial number of the product is defaced or missing.

Products and corporate names appearing in this manual may or may not be registered trademarks or copyrights of their respective companies, and are used only for identification or explanation and to the owners' benefit, without intent to infringe.

SPECIFICATIONS AND INFORMATION CONTAINED IN THIS MANUAL ARE FURNISHED FOR INFORMATIONAL USE ONLY, AND ARE SUBJECT TO CHANGE AT ANY TIME WITHOUT NOTICE, AND SHOULD NOT BE CONSTRUED AS A COMMITMENT BY ASUS. ASUS ASSUMES NO RESPONSIBILITY OR LIABILITY FOR ANY ERRORS OR INACCURACIES THAT MAY APPEAR IN THIS MANUAL, INCLUDING THE PRODUCTS AND SOFTWARE DESCRIBED IN IT.

Table of Contents

| | |
|--|-----------|
| Chapter 1: Knowing your network adapter | |
| Package contents | 5 |
| Features..... | 5 |
| System Requirements | 5 |
| LED status indicators..... | 6 |
| Chapter 2: Installing the utilities and driver | |
| Installing in Windows® OS | 7 |
| Installing in MAC OS | 9 |
| Installing in Linux OS..... | 10 |
| Chapter 3: Connecting to the wireless network | |
| Using the WPS Wizard | 11 |
| Launching the WPS Wizard | 11 |
| Connecting via the WPS button | 12 |
| Connecting via the PIN code..... | 13 |
| Configuring with the WLAN utility (Infrastructure) | 18 |
| Configuring with the WLAN utility (Ad Hoc)..... | 19 |
| Chapter 4: Using the ASUS WLAN Control Center | |
| Launching the ASUS WLAN Control Center | 21 |
| Wireless Status Icons (on the taskbar) | 21 |
| Using the Wireless Settings right-click menu..... | 22 |
| Using the Wireless Settings left-click menu | 23 |
| Using the ASUS WLAN Card Settings utilities..... | 23 |
| Launching the ASUS WLAN Card Settings screen | 23 |
| Status - Status..... | 23 |
| Status - Connection..... | 25 |
| Status - IP Config | 26 |
| Status - Ping..... | 26 |
| Config - Basic..... | 27 |
| Config - Encryption..... | 28 |
| Config - Authentication | 31 |

| | |
|--------------------------------------|----|
| Config - Advanced..... | 31 |
| Profiles | 32 |
| Survey - Site Survey | 33 |
| About - Version Info..... | 33 |
| Link State | 34 |
| Exit Wireless Settings | 34 |
| Windows® XP Wireless options..... | 35 |
| Windows® Vista Wireless options..... | 37 |
| Setting up the XLink Mode..... | 38 |

Chapter 5: Troubleshooting

| | |
|----------------------|----|
| Troubleshooting..... | 42 |
|----------------------|----|

Chapter 6: Appendices

| | |
|--------------------------|----|
| Notices..... | 44 |
| Contact Information..... | 46 |

Chapter 1

Knowing your network adapter

Package contents

Check the following items in your ASUS 802.11n Network Adapter package.

- 1 x ASUS USB-N10
- 1 x Support CD
- 1 x Quick Start Guide
- 1 x Warranty card



Note: If any of the items is damaged or missing, contact your retailer.

Features

- High speed networking (11n Draft) for fast download, file transfer, and media streaming
- Use the WPS function for easy wireless network setup
- Multiple OS support: Windows, Linux, and MAC

System Requirements

Before using your ASUS 802.11n Network Adapter, your system must meet the following minimum requirements:

- Windows® 2000/ XP (x86/x64) / Vista (x86/x64) / 7 (x86/x64), Linux (driver source code available) Mac 10.3/10.4/10.5 OS
- USB 2.0 port on your computer
- 128MB system memory or larger
- 750MHz processor or higher



Important: Install the utilities and driver from the support CD before using the ASUS 802.11n Network Adapter.

LED status indicators

The LED indicator on the ASUS 802.11n Network Adapter indicates the status of the network adapter.



Status indicators

| LED | Indication |
|----------|--|
| ON | The ASUS 802.11n Network Adapter is connected to a wireless device. |
| Blinking | Transmitting data via the ASUS 802.11n Network Adapter. The blinking speed indicates the link speed. |
| OFF | The ASUS 802.11n Network Adapter is not connected to a wireless device. |

Chapter 2

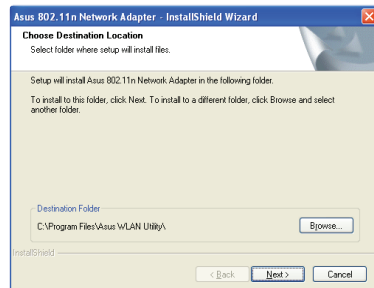
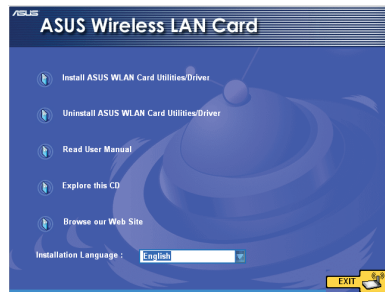
Installing the utilities and driver

Installing in Windows® OS

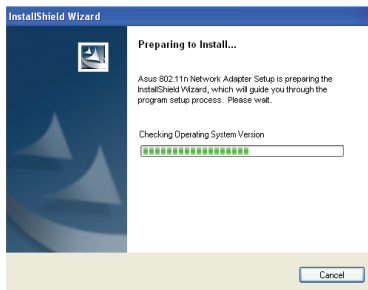
The support CD contains the utilities and drivers for configuring the ASUS 802.11n Network Adapter. To install the ASUS WLAN utilities in Microsoft® Windows, insert the support CD in the CD drive. If Autorun is disabled, run **setup.exe** from the root directory of the support CD.

To install the utilities and driver in Windows® OS:

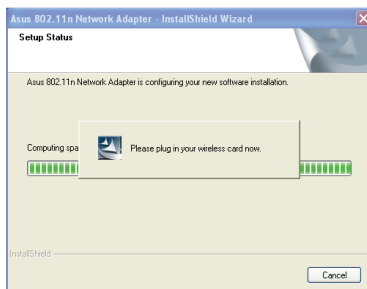
1. Select your language and click **Install ASUS WLAN Card Utilities/Driver**.
2. Click **Next** to accept the default destination folder or click **Browse** to specify another path.



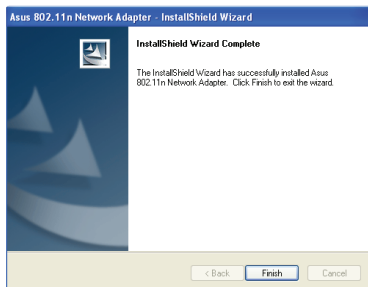
3. The installation process takes several seconds.



4. When prompted, insert the ASUS 802.11n Network Adapter into your computer's USB port, then follow the onscreen instructions to install the driver.



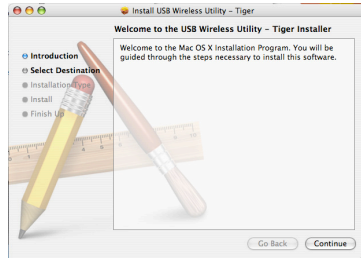
5. When Setup is completed, click **Finish** to exit the installation wizard and restart the computer.



Installing in MAC OS

To install the utilities and driver in MAC OS:

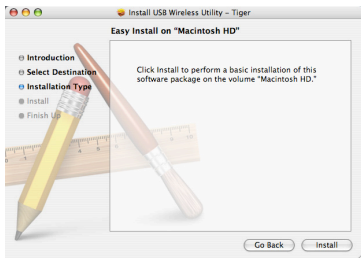
1. Double click the installation Icon and then click **Continue**.



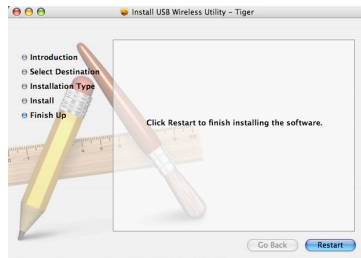
2. Select a destination volume to install the USB Wireless Utility. When done, click **Continue**.



3. Click **Install** to perform a basic installation of this software package on the volume.



4. Click **Restart** to finish installing the software.



Installing in Linux OS

To install the utilities and driver in Linux OS:

- Refer to the **README** text file in the Linux zipped file included in the support CD.



Note: Obtain the Linux driver source code from the support CD, and build the driver for the Linux OS you are using.

Chapter 3

Connecting to the wireless network

Using the WPS Wizard

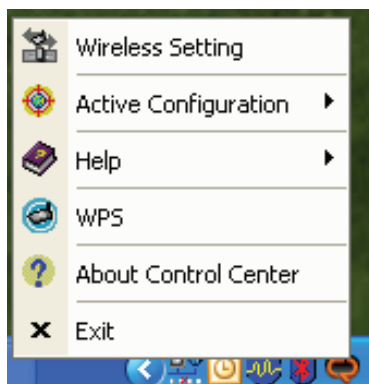
WPS Wizard is a utility that allows you to easily set up your wireless network using any of the following:

- WPS button on both the 802.11n network adapter and the router (or Access Point) that you want to connect to.
- PIN code of the WPS router or AP that you want to connect to.

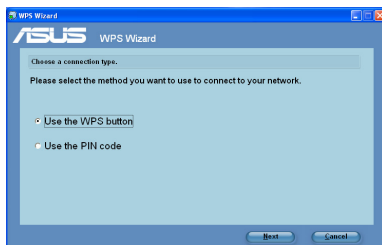
Launching the WPS Wizard

To launch the WPS Wizard:

1. From the Windows® taskbar, right-click the WLAN icon , then select **WPS**.

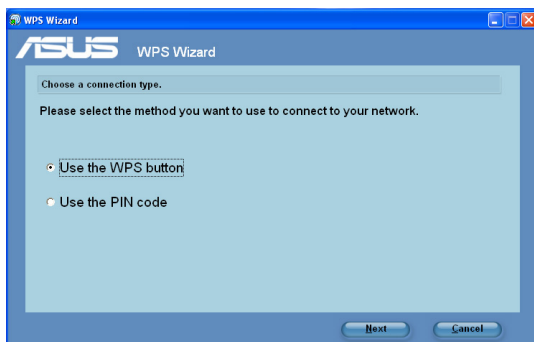


2. The WPS Wizard appears. Select the method that you want to use to connect to the network.

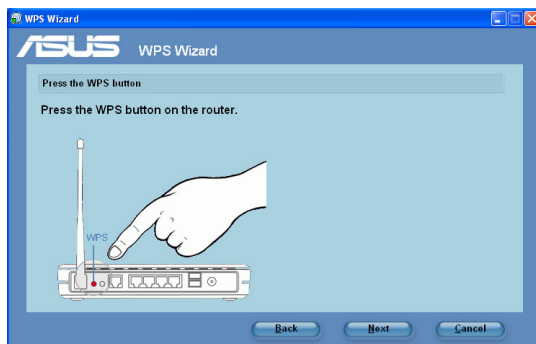


Connecting via the WPS button

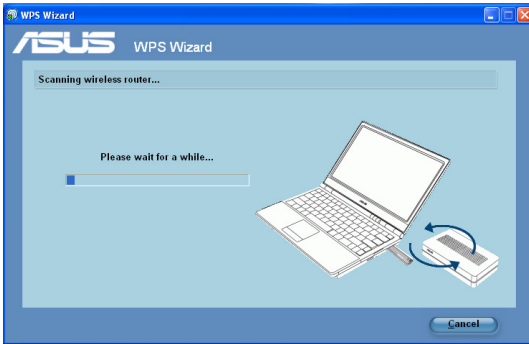
1. From the WPS Wizard, select **Use the WPS button**. Click **Next**.



2. Press the WPS button on the router.



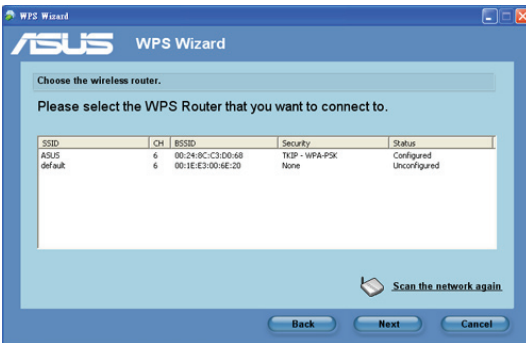
3. The 802.11n network adapter searches for the wireless router. When done, click **Next** and follow the succeeding onscreen instructions.



Note: If WPS configuration failed, move your computer closer to the router then try again.

Connecting via the PIN code

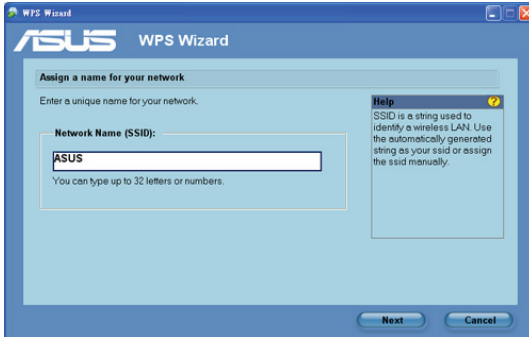
1. From the WPS Wizard, select **Use the PIN code**. Click **Next**.
2. Select the router that you want to connect to.



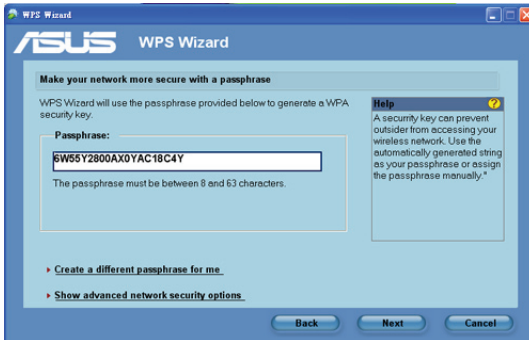
3. Click **Next**. Key in the eight-digit PIN code from the label posted on the router.



4. Assign a name to your network. When done, click **Next**.

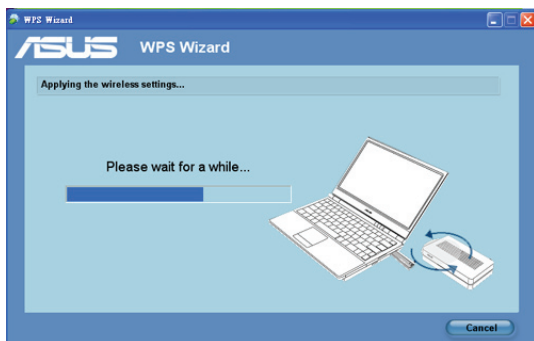


5. Use the auto-generated passphrase as your network's security key or manually assign a passphrase containing between 8 and 63 characters. Click **Next**.

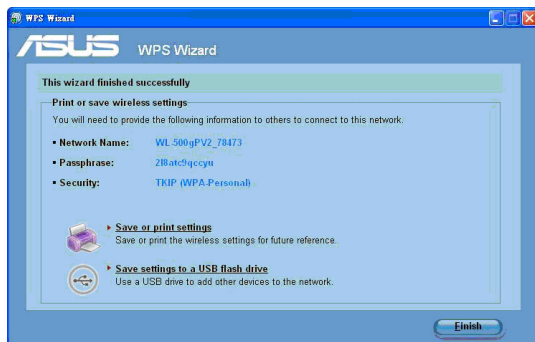


To configure the advanced security settings, click **Show advanced network security options**. Select the **Security Method** and manually key in your **Security key or passphrase**.

6. Wait until the WPS Wizard finishes applying the wireless settings.



7. Installation is completed. Click **Save or print settings** for future reference or **Save settings to a USB flash drive** to add other devices to the network. Click **Finish** to close the WPS Wizard.



Note: For more details on adding devices to the network using a USB flash drive, refer to the section **Adding network devices using a USB flash drive**.