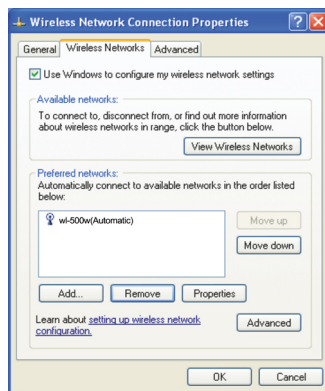
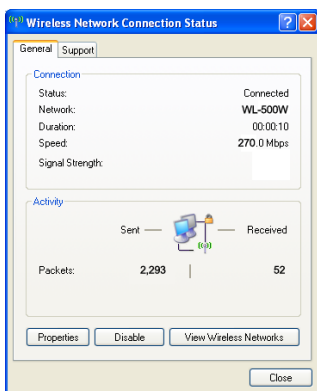


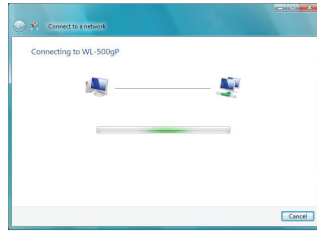
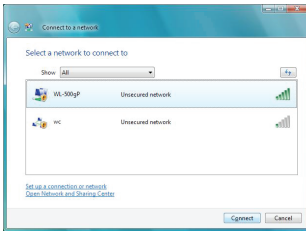
To set up the wireless connection properties, right-click the wireless icon on the taskbar and select **Open Network Connection**. Then right-click the network connection icon and select **Property** to open the Wireless Network Connection Status page.



1. The **General** page shows status, duration, speed, and signal strength. The green bars represent signal strength, with 5 bars indicating excellent signal and 1 bar meaning poor signal.
2. Select “Wireless Networks” tab to show **Preferred networks**. Use the **Add** button to add the “SSID” of available networks and set the connection preference order with the **Move up** and **Move down** buttons. The radio tower with a signal icon identifies the currently connected access point. Click **Properties** to set the authentication of the wireless connection.

# Windows® Vista Wireless options

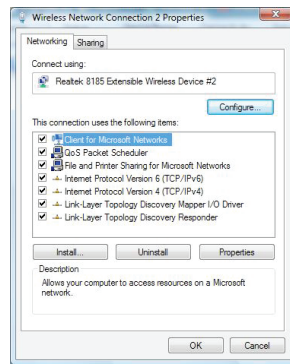
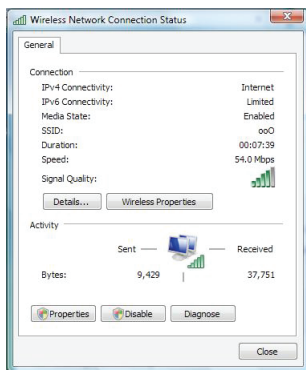
If you want to configure your WLAN Adapter via Windows® Wireless Client service, follow the instruction below to make the settings.



1. Right-click the network icon on the task bar at the right bottom corner of the desktop. Then select **Connect to a network** to view available networks. Select the AP and click **Connect**.
2. A window prompts out asking you for the key if you have set up encryption on your wireless router, input the keys and click **Connect**. The connection is complete.

## To set up the wireless connection properties:

1. Right-click the network icon on the taskbar and select **Network and sharing Center**.
2. Select **Manage network connections** from the prompt window.
3. Double click the wireless network connection icon to open the Wireless Network Connection Status page.
4. Click **Properties** to open the Property page from the Wireless Network Connection Status page.

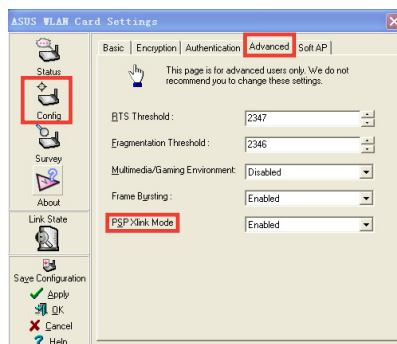


- a. The General page shows status, SSID, duration, speed, and signal strength. The green bars represent signal strength, with 5 bars indicating excellent signal and 1 bar meaning poor signal.
- b. Click **Properties** from the Property page to set the authentication of the wireless connection.

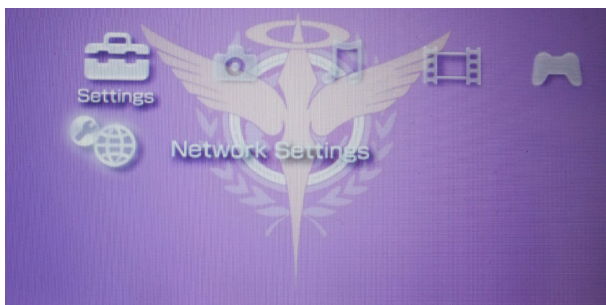
# Setting up the XLink Mode

## Windows XP

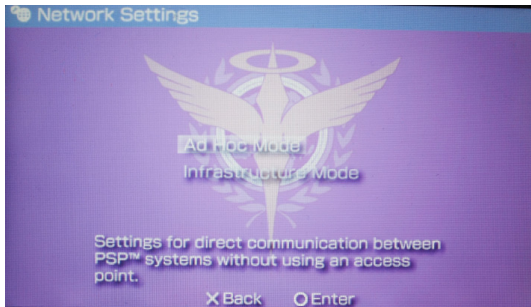
1. Click **ASUS WLAN Control Center > Config > Advanced** to enable the PSP Xlink Mode.



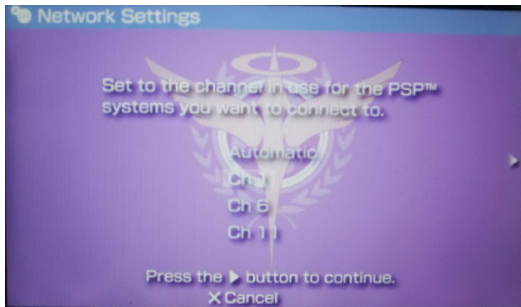
2. Turn on your PSP to set up the configuration.
3. Select **Network Settings**.



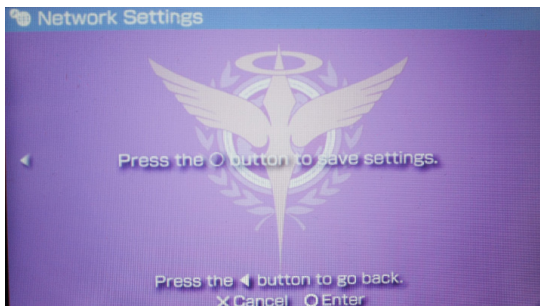
4. Select **AD Hoc Mode**.



5. Select the PSP channel you like to connect.



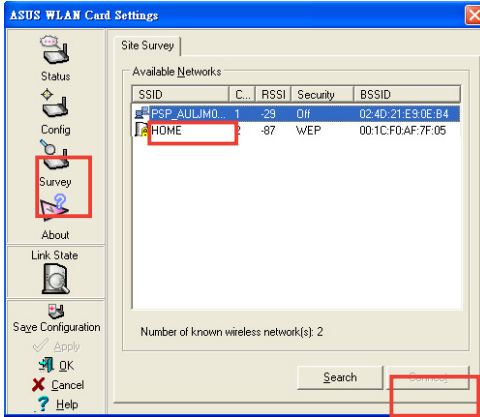
6. When done, select **O** to save settings.



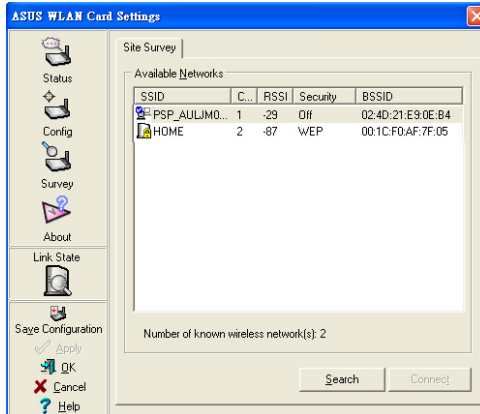
7. Select the game that is available for system-link you want to play then start the game connection. The PSP can provide you the SSID named **PSP\_\*\*\*\*** to connect.

Click **ASUS WLAN control center > survey** to search the available connection.

Select **PSP\_\*\*\*\*** to connect.

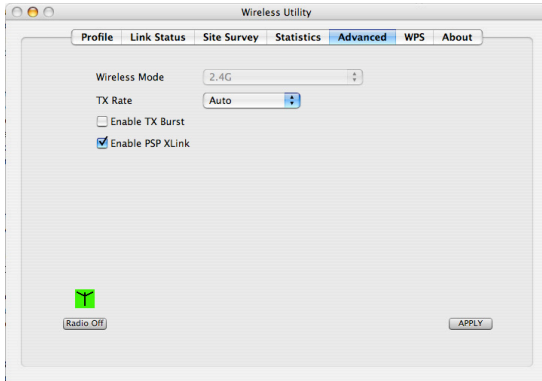


8. When done, click **Connect**.

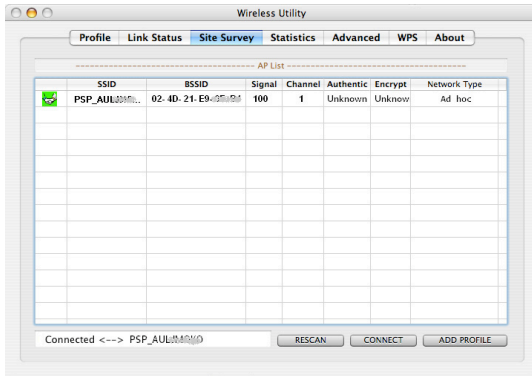


# MAC OS

1. Select **USBWirelessUtility > Advanced** to enable PSP Xlink.



2. Click **USBWirelessUtility > Site survey** to search the available connection. Select PSP\_\*\*\*\* to connect.
3. When done, click **connect**



# Chapter 5

## Troubleshooting

### Troubleshooting

The following troubleshooting guides provide answers to some of the more common problems, which you may encounter while installing or using WLAN Adapter products. If you encounter difficulties that are not mentioned in this section, please contact the Wireless LAN Technical Support.

#### Verify if the WLAN Adapter is installed correctly.

When the WLAN Adapter setup is complete, you can verify if the driver has been setup properly. Right click **My Computer**, select **Properties**, and click the **Device Manager** tab. Then double-click the **Network adapters** icon; you should see “**802.11g Network Adapter**” with an icon of an expansion adapter. There should not be a “!” or “?” (problem) or “x” (disabled) symbol over this icon.

There is a yellow exclamation mark or a yellow question mark in Device Manager in front of my WLAN Adapter.

To resolve the problem, you should update/reinstall the WLAN Adapter driver. In “Device Manager”, right click **802.11g Network Adapter**, select **Properties**, and select **Driver** tab. Click on **Update Driver** button, then follow the “Update Device Driver Wizard” to complete the driver installation.

#### Cannot connect to any access points

Follow the procedure below to configure your WLAN Adapter.

- a. Verify that the “Network Type” is in “Infrastructure” mode.
- b. Verify that the “SSID” of your WLAN Adapter is set to the same “SSID” of an access point.
- c. Verify that the “Encryption” type is the same as that of an access point. If you enabled “WEP” encryption, you must also set the same WEP Keys on both sides.

#### Cannot connect to a Station (WLAN Adapter)

Follow the procedure below to configure your WLAN Adapter.

- a. Verify that the “Network Type” is in “Ad Hoc” mode.

- b. Verify that the “SSID” of your WLAN Adapter is set to the same “SSID” of the other station (or another WLAN Adapter).
- c. Verify that the “channel” of the WLAN Adapter is “Auto” or set to the same “channel” of the other station (or another WLAN Adapter).
- d. Verify that the “Encryption” type is the same as the other station (or another WLAN Adapter). If “WEP” encryption is enabled, you must set the same “WEP” Keys on both stations.

### **Bad link quality or bad signal strength**

There are two possible reasons. First is radio interference, keep the environment around the WLAN Adapter away from microwave ovens and large metal objects. Then try to reorient the WLAN Adapter antenna. Second is the distance, decrease the distance between your WLAN Adapter and the access point or station (or another WLAN Adapter).

### **The TCP/IP protocol did not bind to the WLAN PC Adapter.**

This will occur when the computer already has six TCP/IP bindings in Windows 98 or ten bindings in Windows Me. These limits are imposed by the Microsoft operating system.

**Solution:** If your computer already has the maximum number of TCP/IP bindings, remove one of the network adapters from the Network configuration before installing the WLAN Adapter driver.



# Chapter 6

## Appendices

### Notices

#### Federal Communications Commission Statement

This device complies with Part 15 of the FCC Rules. Operation is subject to the following two conditions:

1. This device may not cause harmful interference.
2. This device must accept any interference received, including interference that may cause undesired operation.

This equipment has been tested and found to comply with the limits for a class B digital device, pursuant to part 15 of the FCC Rules. These limits are designed to provide reasonable protection against harmful interference in a residential installation.

This equipment generates, uses and can radiate radio frequency energy and, if not installed and used in accordance with the instructions, may cause harmful interference to radio communications. However, there is no guarantee that interference will not occur in a particular installation. If this equipment does cause harmful interference to radio or television reception, which can be determined by turning the equipment off and on, the user is encouraged to try to correct the interference by one or more of the following measures:

- Reorient or relocate the receiving antenna.
- Increase the separation between the equipment and receiver.
- Connect the equipment into an outlet on a circuit different from that to which the receiver is connected.
- Consult the dealer or an experienced radio/TV technician for help.

RF exposure warning:

The equipment complies with FCC RF exposure limits set forth for an uncontrolled environment.

USB dongle transmitter is approved for use in typical laptop computers. To comply with FCC RF exposure requirements, it should not be used in other devices or certain laptop and tablet computer configurations where the USB connectors on the host computer are unable to provide or ensure the necessary operating configurations intended for the device and its users or bystanders to satisfy RF exposure compliance requirements."

SAR Value: 0.717 W/kg



Caution: Any changes or modifications not expressly approved by the party responsible for compliance could void the user's authority to operate the equipment.

## **Declaration of Conformity for R&TTE directive 1999/5/EC**

Essential requirements – Article 3

Protection requirements for health and safety – Article 3.1 a

Testing for electric safety according to EN 60950-1 has been conducted. These are considered relevant and sufficient.

Protection requirements for electromagnetic compatibility – Article 3.1b

Testing for electromagnetic compatibility according to EN 301 489-1 and EN 301 489-17 has been conducted. These are considered relevant and sufficient.

Effective use of the radio spectrum – Article 3.2

Testing for radio test suites according to EN 300 328- 2 has been conducted. These are considered relevant and sufficient.

## **CE Mark Warning**

This is a Class B product, in a domestic environment, this product may cause radio interference, in which case the user may be required to take adequate measures.

## **REACH**

Complying with the REACH (Registration, Evaluation, Authorisation, and Restriction of Chemicals) regulatory framework, we published the chemical substances in our products at ASUS REACH website at <http://green.asus.com/english/REACH.htm>.

# Contact Information

## ASUSTeK COMPUTER INC. (Asia Pacific)

Address 15 Li-Te Road, Peitou, Taipei, Taiwan 11259  
Website [www.asus.com.tw](http://www.asus.com.tw)

### Technical Support

Telephone +886228943447  
Support Fax +886228907698  
Software download [support.asus.com\\*](http://support.asus.com*)

## ASUS COMPUTER INTERNATIONAL (America)

Address 800 Corporate Way, Fremont, CA 94539, USA  
Telephone +15029550883  
Fax +15029338713  
Website [usa.asus.com](http://usa.asus.com)  
Software download [support.asus.com\\*](http://support.asus.com*)

## ASUS COMPUTER GmbH (Germany and Austria)

Address Harkort Str. 25, D40880 Ratingen, Germany  
Fax +492102959911  
Online contact [www.asus.com.de/sales](http://www.asus.com.de/sales)

### Technical Support

Component Telephone +49-1805-010923  
System/Notebook  
/Eee/LCD Telephone +49-1805-010920  
Support Fax +492102959911  
Online support [www.asus.com.de/support](http://www.asus.com.de/support)  
Website [www.asus.com.de/news](http://www.asus.com.de/news)

\* Available on this site is an online Technical Inquiry Form that you can fill out to contact technical support.

<b>Manufacturer:</b>	<b>ASUSTeK Computer Inc.</b> Tel: +886-2-2894-3447 Address: No. 15, LI-TE RD., PEITOU, TAIPEI 112, TAIWAN
<b>Authorised representative in Europe:</b>	<b>ASUS Computer GmbH</b> Address: HARKORT STR. 21-23, 40880 RATINGEN, GERMANY
<b>Authorised distributors in Turkey:</b>	<b>BOGAZICI BIL GISAYAR SAN. VE TIC. A.S.</b> Tel: +90 212 3311000 Address: AYAZAGA MAH. KEMERBURGAZ CAD. NO.10 AYAZAGA/ISTANBUL
	<b>INDEX BILGISAYAR SISTEMLERI MUHENDISLIK SAN. VE TIC. A.S.</b> Tel: +90 212 3312121 Address: AYAZAGA MAH: CENDERE YOLU NO:9 AYAZAGA/ISTANBUL

**EEE Yönetmeliğine Uygundur**

# Canada

## Industry Canada regulatory information

Operation is subject to the following two conditions: (1) this device may not cause interference, and (2) this device must accept any interference, including interference that may cause undesired operation of the device.

The user is cautioned that this device should be used only as specified within this manual to meet RF exposure requirements. Use of this device in a manner inconsistent with this manual could lead to excessive RF exposure conditions.

SAR Value: 0.717 W/kg

## 警語

經型式認證合格之低功率射頻電機，非經許可，公司，商號或使用者均不得擅自變更頻率，加大功率或變更原設計之特性及功能

低功率射頻電機之使用不得影響飛航影響安全及干擾合法通信，經發現有干擾現象時，應立即停用，並改善至無干擾時方得繼續使用

前項合法通信，指一電信法規定作業之無線電通信低功率射頻電機需忍受合法通信或工業，科學及醫療用電波輻射性電機設備之干擾