

Measurement Report for Device

Device Under Test Properties

Model, Manufacturer	Dimensions [mm]	Software Version	DUT Type
Device,	70.0 x 50.0 x 8.0	3.2.0.1840	5G Verification Source

Exposure Conditions

Phantom Section	Position, Test Distance [mm]	Frequency [MHz]	Conversion Factor
5G	FRONT, 10.00	10000.0	1.0

Hardware Setup

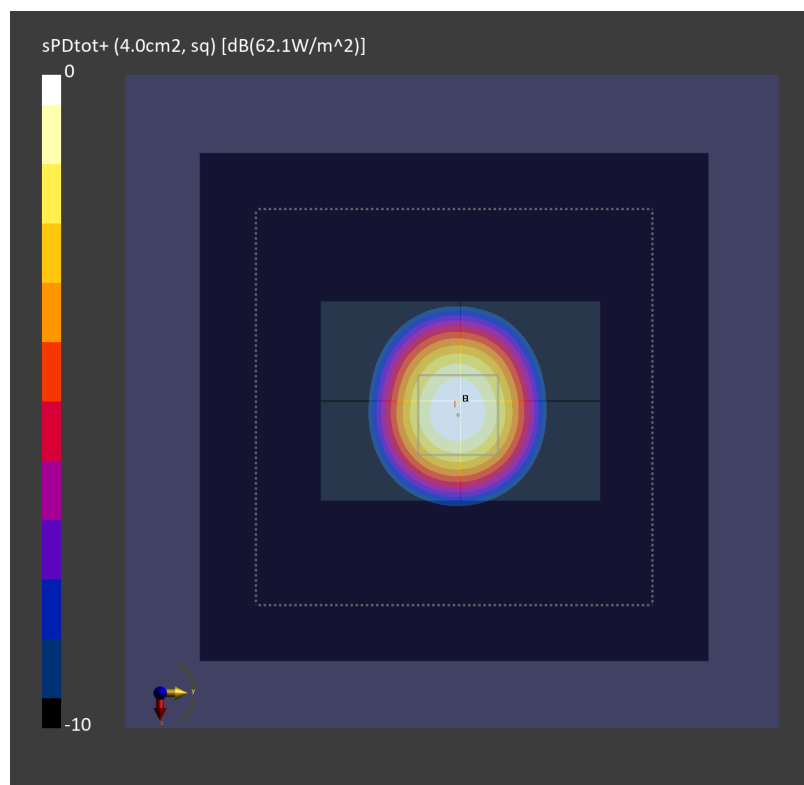
Phantom	Medium	Probe, Calibration Date	DAE, Calibration Date
mmWave - 1044	Air -	EUmmWV4 - SN9461_F1-55GHz, 2023-10-12	DAE4 Sn1697, 2023-11-20

Scans Setup

Scan Type	5G Scan
Grid Extents [mm]	120.0 x 120.0
Grid Steps [lambda]	0.25 x 0.25
Sensor Surface [mm]	10.0

Measurement Results

Date	2024-08-29
Avg. Area [cm ²]	4.00
psPDn+ [W/m ²]	61.9
psPDtot+ [W/m ²]	62.1
H _{max} [A/m]	0.439
E _{max} [V/m]	164
max _(Stot) [W/m ²]	71.2
Power Drift [dB]	-0.02
IPDn	113



Measurement Report for Device

Device Under Test Properties

Model, Manufacturer	Dimensions [mm]	Software Version	DUT Type
Device,	70.0 x 50.0 x 8.0	3.2.0.1840	Phone

Exposure Conditions

Phantom Section	Position, Test Distance [mm]	Frequency [MHz]	Conversion Factor
5G	FRONT, 10.00	10000.0	1.0

Hardware Setup

Phantom	Medium	Probe, Calibration Date	DAE, Calibration Date
mmWave - 1109	Air -	EUmmWV4 - SN9441_F1-55GHz, 2023-11-17	DAE4 Sn1794, 2024-02-15

Scans Setup

Scan Type	5G Scan
Grid Extents [mm]	120.0 x 120.0
Grid Steps [lambda]	0.25 x 0.25
Sensor Surface [mm]	10.0

Measurement Results

Date	2024-08-30
Avg. Area [cm ²]	4.00
psPDn+ [W/m ²]	61.8
psPDtot+ [W/m ²]	61.9
H _{max} [A/m]	0.431
E _{max} [V/m]	163
max _(Stot) [W/m ²]	70.0
Power Drift [dB]	0.02
IPDn	117

