



RT-N66U Dark Knight Gigabit Router Wireless-N900



Quick Start Guide

EC Declaration of Conformity



We, the undersigned,

Manufacturer:	ASUSTek COMPUTER INC.
Address, City:	No. 150, LI-TE RD., PEITOU, TAIPEI 112, TAIWAN R.O.C.
Country:	TAIWAN
Authorized representative in Europe:	ASUS COMPUTER GmbH
Address, City:	HARKORT STR. 21-23, 40880 RATINGEN
Country:	GERMANY

declare the following apparatus:

Product name :	Dark Knight Double 450Mbps Dual N Band Router
Model name :	RT-N66U

conform with the essential requirements of the following directives:

2004/108/EC-EMC Directive

<input checked="" type="checkbox"/> EN 55022:2006+A1:2007 Class B	<input checked="" type="checkbox"/> EN 55024:1998+A1:2001+A2:2003
<input checked="" type="checkbox"/> EN 61000-3-2:2006+A2:2009 Class A	<input checked="" type="checkbox"/> EN 61000-3-3:2008

1999/5/EC-R & TTE Directive

<input checked="" type="checkbox"/> EN 300 328 V1.7.1(2006-10)	<input checked="" type="checkbox"/> EN 301 489-1 V1.8.1(2008-04)
<input checked="" type="checkbox"/> EN 301 893 V1.5.1(2008-12)	<input checked="" type="checkbox"/> EN 301 489-17 V2.1.1(2009-05)
<input checked="" type="checkbox"/> EN 62311:2008	

2006/95/EC-LVD Directive

<input type="checkbox"/> EN 60950-1:2006	<input type="checkbox"/> EN 60065:2002+A1:2006+A11:2008
<input checked="" type="checkbox"/> EN 60950-1:2006+A11:2009	

2009/125/EC-ErP Directive

Regulation (EC) No. 1275/2008	Regulation (EC) No. 278/2009
<input checked="" type="checkbox"/> EN 62301:2005	<input checked="" type="checkbox"/> EN 62301:2005
Regulation (EC) No. 642/2009	
<input type="checkbox"/> EN 62301:2005	

Ver. 110101

CE marking



(EC conformity marking)

Position : **CEO**

Name : **Jerry Shen**

Declaration Date: Nov. 1, 2011

Year to begin affixing CE marking:2011

Signature : _____

Table of contents

English.....	4
T-Chinese.....	17
French.....	30
Portuguese	43
Spanish.....	56



NOTE / <T-CHINESE> / <FRENCH> / <PORTUGUESE> / <SPANISH>

- For more details, refer to the user manual included in the support CD.
 - **<T-CHINESE>**
 - **<FRENCH>**
 - **<PORTUGUESE>**
 - **<SPANISH>**
-

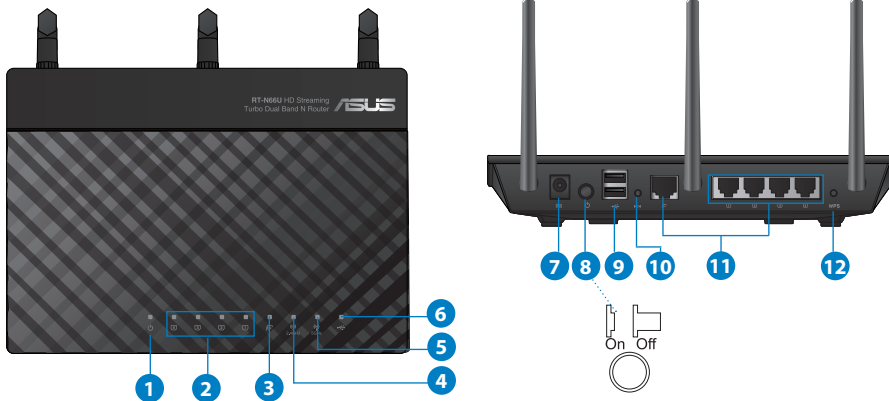
Package contents

- ☑ RT-N66U
- ☑ Network cable
- ☑ Support CD (User Manual/utilities)
- ☑ Stand
- ☑ AC adapter
- ☑ Quick Start Guide
- ☑ Warranty card



NOTE: If any of the items is damaged or missing, contact your retailer.

A quick look



1) Power LED	5) 5GHz LED	9) USB 2.0 ports
2) LAN LED	6) USB 2.0 LED	10) Reset button
3) WAN LED	7) Power (DC-In) port	11) Internet & LAN ports
4) 2.4GHz LED	8) Power switch	12) WPS button



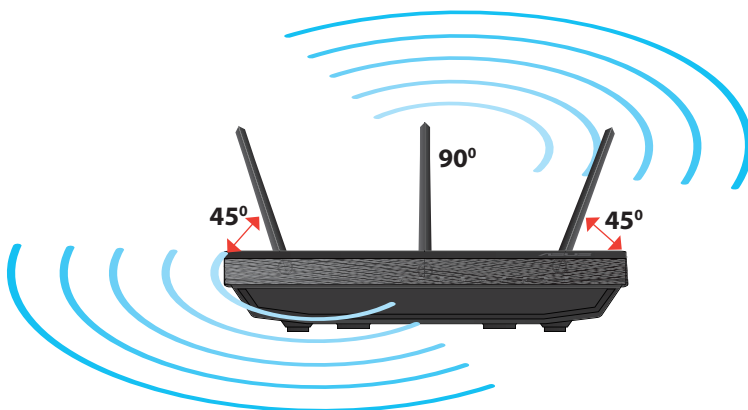
NOTES:**• USB External HDD/Flash disk:**

- The wireless router works with most USB HDDs/Flash disks up to 2TB and supports read-write access for FAT16, FAT32, EXT2, EXT3, and NTFS.
 - To safely remove the USB disk, launch the web GUI (<http://192.168.1.1>), then in the **Network Map** page's upper right corner, click the USB icon and click **Eject USB 1**.
 - Incorrect removal of the USB disk may cause data corruption.
 - For the list of file system and hard disk partitions that the wireless router supports, visit <http://event.asus.com/networks/disksupport>
 - For the list of printers that the wireless router supports, visit <http://event.asus.com/networks/printersupport>
-

Positioning your wireless router

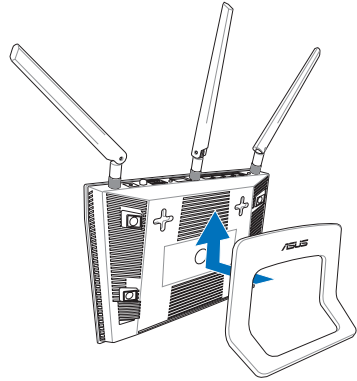
For the best wireless signal transmission between the wireless router and the network devices connected to it, ensure that you:

- Place the wireless router in a centralized area for a maximum wireless coverage for the network devices.
- Keep the device away from metal obstructions and away from direct sunlight.
- Keep the device away from 802.11g or 20MHz only Wi-Fi devices, 2.4GHz computer peripherals, Bluetooth devices, cordless phones, transformers, heavy-duty motors, fluorescent lights, microwave ovens, refrigerators, and other industrial equipment to prevent signal interference or loss.
- To ensure the best wireless signal, orient the three detachable antennas as shown in the drawing below.
- For optimum performance, adjust the internal cooling system. Refer to the user manual for details.
- Always update to the latest firmware. Visit the ASUS website at <http://www.asus.com> to get the latest firmware updates.



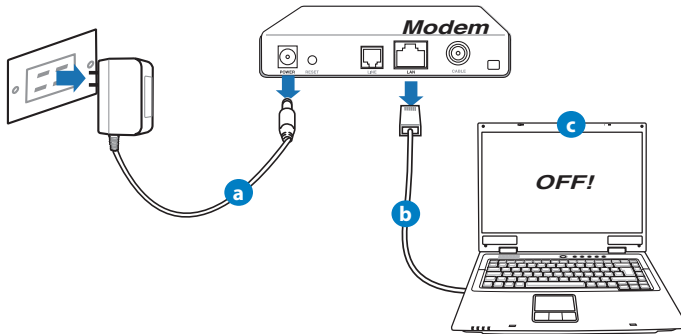
Mounting to the stand

- Align and insert the stand's mounting hooks to the wireless router's mounting holes.



Before you proceed

1. Unplug and disconnect the wires/cables from your existing modem setup and release your computer's outmoded IP address.

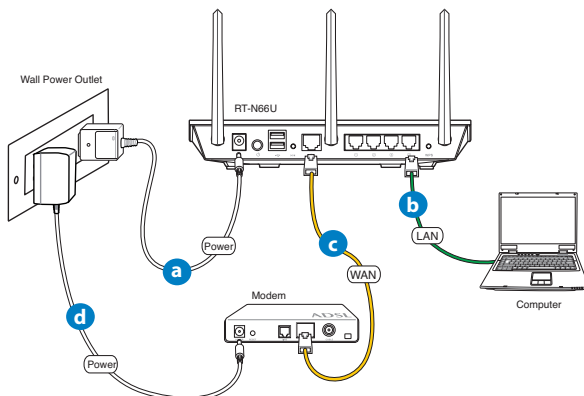


- a:** Unplug the AC adapter from the power outlet and disconnect it from your cable/ADSL modem.
- b:** Disconnect the network cable from your cable/ADSL modem.
- c:** Reboot your computer (recommended).



WARNING! Before disconnecting the wires/cables, ensure that your cable/ADSL modem has been turned off for at least two minutes. If your modem has a backup battery, remove it as well.

2. Set up your wireless environment.



- a:** Insert your wireless router's AC adapter to the DC-In port and plug it to a power outlet.
- b:** Using the bundled network cable, connect your computer to your wireless router's LAN port.



IMPORTANT! Ensure that the WAN and LAN LEDs are blinking.

- c:** Using another network cable, connect your modem to your wireless router's WAN port.
- d:** Insert your modem's AC adapter to the DC-In port and plug it to a power outlet.

3. Disable some settings on your computer.

- A. Disable the proxy server, if enabled.
- B. Set the TCP/IP settings to automatically obtain an IP address.
- C. Disable the dial-up connection, if enabled.



NOTE: For more details on disabling your computer settings, refer to *Frequently Asked Questions (FAQs)*.

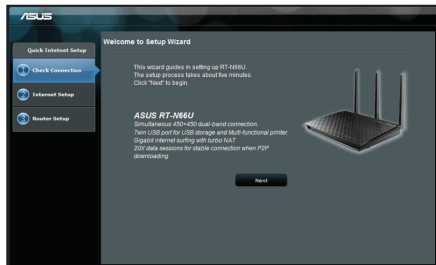
Getting started

1. Configure your wireless settings via the wireless router's web graphics user interface (web GUI).

- a: Launch your web browser such as Internet Explorer, Firefox, Google Chrome, or Safari.



a



b



NOTE: If QIS does not launch automatically, follow these steps to manually launch QIS:

- On your web browser, key in **<http://192.168.1.1>** and run the Quick Internet Setup (QIS) Wizard again.
- Disable the proxy settings, dial-up connection, and set your TCP/IP settings to automatically obtain an IP address. For more details, refer to the **FAQs** section or use the Setup Wizard in the support CD for auto-diagnosis.

b: The wireless router's Quick Internet Setup (QIS) feature automatically detects if your ISP connection type is **Dynamic IP**, **PPPoE**, **PPTP**, **L2TP**, and **Static IP**. Key in the necessary information for your connection type.



NOTE: The auto-detection of your ISP connection type takes place when you configure the wireless router for the first time or when your wireless router is reset to its default settings.

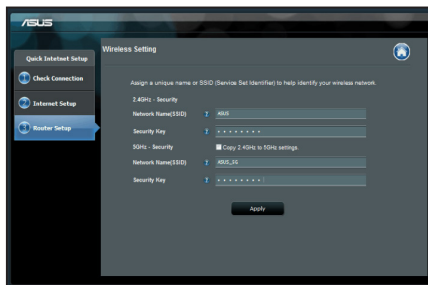


IMPORTANT! Obtain the necessary information about your Internet connection type from your Internet Service Provider (ISP).

c: Assign the network name (SSID) and security key for your 2.4GHz and 5GHz wireless connection. Click **Apply** when done.

d: Your Internet and wireless settings are displayed. Click **Next** to continue.

e: Read the wireless network connection tutorial. When done, click **Finish**.



NOTE: You can assign a network name with up to 32 characters.

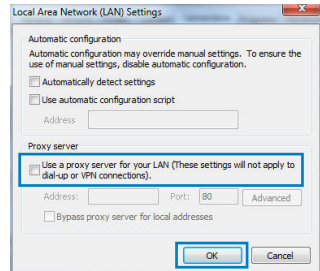
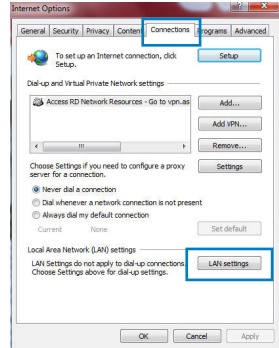
Frequently Asked Questions (FAQs)

After following the steps, I still cannot access the wireless router's web graphics user interface (web GUI) to configure the wireless router settings.

A. Disable the proxy server, if enabled.

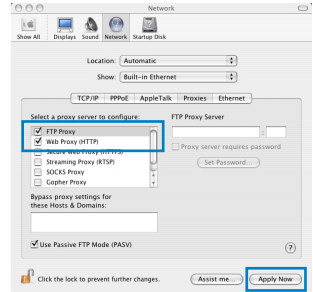
Windows® 7

1. Click **Start** > **Internet Explorer** to launch the web browser.
2. Click **Tools** > **Internet options** > **Connections** tab > **LAN settings**.
3. From the Local Area Network (LAN) Settings screen, untick **Use a proxy server for your LAN**.
4. Click **OK** when done.



MAC OS

1. From your Safari browser, click **Safari > Preferences > Advanced > Change Settings...**
2. From the Network screen, deselect **FTP Proxy** and **Web Proxy (HTTP)**.
3. Click **Apply Now** when done.

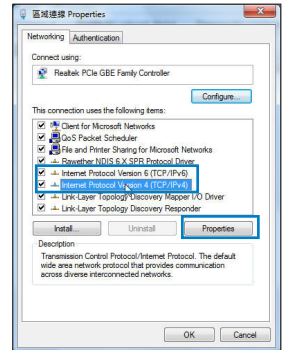


NOTE: Refer to your browser's help feature for details on disabling the proxy server.

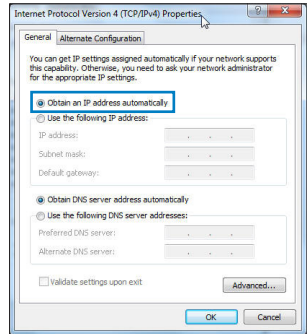
B. Set the TCP/IP settings to automatically obtain an IP address.

Windows® 7


1. Click **Start > Control Panel > Network and Internet > Network and Sharing Center > Manage network connections.**
2. Select **Internet Protocol Version 4 (TCP/IPv4)**, then click **Properties.**

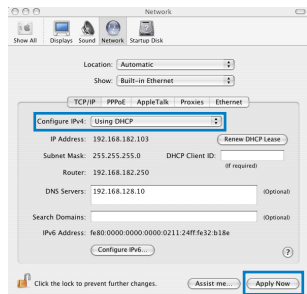


- To obtain the IPv4 IP settings automatically, tick **Obtain an IP address automatically**.
- Click **OK** when done.



MAC OS

- Click the Apple icon  located on the top left of your screen.
- Click **System Preferences > Network > Configure...**
- From the **TCP/IP** tab, select **Using DHCP** in the **Configure IPv4** dropdown list.
- Click **Apply Now** when done.

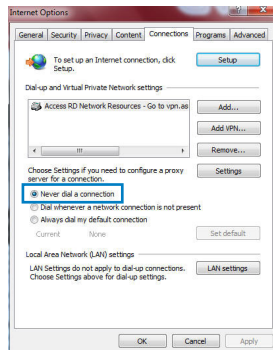


NOTE: Refer to your operating system's help and support feature for details on configuring your computer's TCP/IP settings.

C. Disable the dial-up connection, if enabled.

Windows® 7

1. Click **Start** > **Internet Explorer** to launch the browser.
2. Click **Tools** > **Internet options** > **Connections** tab.
3. Tick **Never dial a connection**.
4. Click **OK** when done.



NOTE: Refer to your browser's help feature for details on disabling the dial-up connection settings.

D. Close all running web browsers.

The client cannot establish a wireless connection with the router.

Out of Range:

- Put the router closer to the wireless client.
- Try to change the channel settings.

Authentication:

- Use wired connection to connect to the router.
- Check the wireless security settings.
- Press the Reset button at the rear panel for more than five seconds.

Cannot find the router:

- Press the Reset button at the rear panel for more than five seconds.
- Check the setting in the wireless adapter such as SSID and encryption settings.

Cannot access the Internet via wireless LAN adapter.

- Move the router closer to the wireless client.
- Check whether the wireless adapter is connected to the correct wireless router.
- Check whether the wireless channel in use conforms to the channels available in your country/area.
- Check the encryption settings.
- Check if the ADSL or Cable connection is correct.
- Retry using another Ethernet cable.

If the ADSL "LINK" light blinks continuously or stays off, Internet access is not possible - the Router is unable to establish a connection with the ADSL network.

- Ensure that all your cables are all properly connected .
- Disconnect the power cord from the ADSL or cable modem, wait a few minutes, then reconnect the cord.
- If the ADSL light continues to blink or stays OFF, contact your ADSL service provider.

Network name or encryption keys are forgotten.

- Try setting up the wired connection and configuring the wireless encryption again.
- Press the Reset button of the wireless router for more than five seconds.
- Factory default settings:

User name / Password: admin / admin	IP address: 192.168.1.1	SSID: ASUS
---	-----------------------------------	-------------------

ASUS Recycling/Takeback Services

ASUS recycling and takeback programs come from our commitment to the highest standards for protecting our environment. We believe in providing solutions for you to be able to responsibly recycle our products, batteries, other components, as well as the packaging materials. Please go to <http://csr.asus.com/english/Takeback.htm> for the detailed recycling information in different regions.

REACH

Complying with the REACH (Registration, Evaluation, Authorisation, and Restriction of Chemicals) regulatory framework, we published the chemical substances in our products at ASUS REACH website at <http://csr.asus.com/english/REACH.htm>

Federal Communications Commission Statement

This device complies with Part 15 of the FCC Rules. Operation is subject to the following two conditions:

- This device may not cause harmful interference.
- This device must accept any interference received, including interference that may cause undesired operation.

This equipment has been tested and found to comply with the limits for a class B digital device, pursuant to part 15 of the FCC Rules. These limits are designed to provide reasonable protection against harmful interference in a residential installation.

This equipment generates, uses and can radiate radio frequency energy and, if not installed and used in accordance with the instructions, may cause harmful interference to radio communications. However, there is no guarantee that interference will not occur in a particular installation. If this equipment does cause harmful interference to radio or television reception, which can be determined by turning the equipment off and on, the user is encouraged to try to correct the interference by one or more of the following measures:

- Reorient or relocate the receiving antenna.
- Increase the separation between the equipment and receiver.
- Connect the equipment into an outlet on a circuit different from that to which the receiver is connected.
- Consult the dealer or an experienced radio/TV technician for help.



WARNING! Any changes or modifications not expressly approved by the party responsible for compliance could void the user's authority to operate the equipment.

Prohibition of Co-location

This device and its antenna(s) must not be co-located or operating in conjunction with any other antenna or transmitter.

IMPORTANT NOTE:

Radiation Exposure Statement: This equipment complies with FCC radiation exposure limits set forth for an uncontrolled environment. End users must follow the specific operating instructions for satisfying RF exposure compliance. To maintain compliance with FCC exposure compliance requirement, please follow operation instruction as documented in this manual.



WARNING! This equipment must be installed and operated in accordance with provided instructions and the antenna(s) used for this transmitter must be installed to provide a separation distance of at least 20 cm from all persons and must not be co-located or operating in conjunction with any other antenna or transmitter.

Declaration of Conformity for R&TTE directive 1999/5/EC

Essential requirements – Article 3

Protection requirements for health and safety – Article 3.1a

Testing for electric safety according to EN 60950-1 has been conducted. These are considered relevant and sufficient.

Protection requirements for electromagnetic compatibility – Article 3.1b

Testing for electromagnetic compatibility according to EN 301 489-1 and EN 301 489-17 has been conducted. These are considered relevant and sufficient.

Effective use of the radio spectrum – Article 3.2

Testing for radio test suites according to EN 300 328- 2 has been conducted. These are considered relevant and sufficient.

CE Mark Warning

This is a Class B product, in a domestic environment, this product may cause radio interference, in which case the user may be required to take adequate measures. Operation Channels: CH1~11 for N. America; Ch1~14 for Japan; CH1~13 for Europe (ETSI)

Canada, Industry Canada (IC) Notices

This Class B digital apparatus complies with Canadian ICES-003 and RSS-210. Operation is subject to the following two conditions: (1) this device may not cause interference, and (2) this device must accept any interference, including interference that may cause undesired operation of the device.

Radio Frequency (RF) Exposure Information

The radiated output power of the ASUS Wireless Device is below the Industry Canada (IC) radio frequency exposure limits. The ASUS Wireless Device should be used in such a manner such that the potential for human contact during normal operation is minimized.

This device has been evaluated for and shown compliant with the IC Specific Absorption Rate ("SAR") limits when installed in specific host products operated in portable exposure conditions (antennas are less than 20 centimeters of a person's body).

This device has been certified for use in Canada. Status of the listing in the Industry Canada's REL (Radio Equipment List) can be found at the following web address: <http://www.ic.gc.ca/app/sitt/reltel/srch/nwRdSrch.do?lang=eng>

Additional Canadian information on RF exposure also can be found at the following web: <http://www.ic.gc.ca/eic/site/smt-gst.nsf/eng/sf08792.html>

The operation frequency of the device in the 5150-5250 MHz band is for indoor use only.

Canada, avis d'Industry Canada (IC)

Cet appareil numérique de classe B est conforme aux normes canadiennes ICES-003 et RSS-210.

Son fonctionnement est soumis aux deux conditions suivantes : (1) cet appareil ne doit pas causer d'interférence et (2) cet appareil doit accepter toute interférence, notamment les interférences qui peuvent affecter son fonctionnement.

Informations concernant l'exposition aux fréquences radio (RF)

La puissance de sortie émise par l'appareil de sans fil ASUS est inférieure à la limite d'exposition aux fréquences radio d'Industry Canada (IC). Utilisez l'appareil de sans fil ASUS de façon à minimiser les contacts humains lors du fonctionnement normal.

Ce périphérique a été évalué et démontré conforme aux limites SAR (Specific Absorption Rate – Taux d'absorption spécifique) d'IC lorsqu'il est installé dans des produits hôtes particuliers qui fonctionnent dans des conditions d'exposition à des appareils portables (les antennes se situent à moins de 20 centimètres du corps d'une personne).

Ce périphérique est homologué pour l'utilisation au Canada. Pour consulter l'entrée correspondant à l'appareil dans la liste d'équipement radio (REL - Radio Equipment List) d'Industry Canada rendez-vous sur:

<http://www.ic.gc.ca/app/sitt/reitel/srch/nwRdSrch.do?lang=eng>

Pour des informations supplémentaires concernant l'exposition aux RF au Canada rendezvous sur :

<http://www.ic.gc.ca/eic/site/smt-gst.nsf/eng/sf08792.html>

NCC 警語

經型式認證合格之低功率射頻電機，非經許可，公司、商號或使用者均不得擅自變更頻率、加大功率或變更原設計之特性及功能。

低功率射頻電機之使用不得影響飛航安全及干擾合法通信；經發現有干擾現象時，應立即停用，並改善至無干擾時方得繼續使用。

前項合法通信，指依電信法規定作業之無線電通信。

低功率射頻電機須忍受合法通信或工業、科學及醫療用電波輻射性電機設備之干擾。

Networks Global Hotline Information



NOTE: For more information, visit the ASUS support site at:
<http://support.asus.com>

Area	Hotline Number	Support Languages	Availability
Australia	1300-2787-88	English	Mon. to Fri. 9:00-18:00
Austria	0043-820240513	German	Mon. to Fri. 9:00-18:00
Belgium	0032-78150231	Dutch /French	Mon. to Fri. 9:00-17:00
China	800-820-6655; 021-34074610	Simplified Chinese	Mon. to Sun. 9:00-18:00
Denmark	0045-3832-2943	Denish/English	Mon. to Fri. 9:00-17:00
Finland	00358-9693-7969	Finnish/English/Swed- ish	Mon. to Fri. 10:00-18:00
France	0033-170949400	France	Mon. to Fri. 9:00-17:45
Greece	00800-44-14-20-44	Greek	Mon. to Fri. 9:00-13:00; 14:00-18:00
Hong Kong	3582-4770	Cantonese/ Chinese/ English	Mon. to Fri. 10:00-20:00 Sat. 10:00-17:00
Ireland	0035-31890719918	English	Mon. to Fri. 9:00-17:00
Japan	0800-123-2787	Japanese	Mon. to Fri. 9:00-18:00 Sat. to Sun. 9:00-17:00

Networks Global Hotline Information

Area	Hotline Number	Support Languages	Availability
Malaysia	+603 2148 0827 (Check Repair De- tail Status Only) +603-6279-5077	Bahasa Melayu/English	Mon. to Fri. 10:00-19:00
Netherlands / Luxembourg	0031-591-570290	Dutch / English	Mon. to Fri. 9:00-17:00
New Zealand	0800-278-788 / 0800-278-778	English	Mon. to Fri. 9:00-17:00
Norway	0047-2316-2682	Norwegian /English	Mon. to Fri. 9:00-17:00
Philippine	+632-636 8504; 180014410573	English	Mon. to Fri. 9:00-18:00
Poland	00225-718-033 00225-718-040	Polish	Mon. to Fri. 9:00-17:00 8:30-17:30
Portugal	707-500-310	Portuguese	Mon. to Fri. 9:00-17:00
Russia	+8-800-100-ASUS; +7-495-231-1999	Russian/ English	Mon. to Fri. 9:00-18:00
Singapore	+65-6720-3835 (Check Repair De- tail Status Only) -66221701	English	Mon. to Fri. 11:00-19:00
Slovak	00421-232-162- 621	Czech	Mon. to Fri. 8:00-17:00
Spain	902-88-96-88	Spanish	Mon. to Fri. 9:00-18:00
Sweden	0046-8587-6940	Swedish/ English	Mon. to Fri. 9:00-17:00

Networks Global Hotline Information

Area	Hotline Number	Support Languages	Availability
Switzerland	0041-848111010	German/French	Mon. to Fri. 9:00-18:00
	0041-848111014	French	Mon. to Fri. 9:00-17:45
	0041-848111012	Italian	Mon. to Fri. 9:00-17:00
Taiwan	0800-093-456; 02-81439000	Traditional Chinese	Mon. to Fri. 9:00-12:00; 13:30-18:00
Thailand	+662-679-8367 -70; 001 800 852 5201	Thai/English	Mon. to Fri. 9:00-18:00
Turkey	+90-216-524-3000	Turkish	Mon. to Fri. 09:00-18:00
United Kingdom	0044-870- 1208340; 0035-31890719918	English	Mon. to Fri. 9:00-17:00
USA/Canada	1-812-282-2787	English	Mon. to Fri. 8:30-12:00am EST (5:30am-9:00pm PST)
			Sat. to Sun. 9:00am-6:00pm EST (6:00am-3:00pm PST)

Manufacturer	ASUSTeK Computer Inc. Tel: +886-2-2894-3447 Address: No. 150, LI-TE RD., PEITOU, TAIPEI 112, TAIWAN
Authorised representative in Europe	ASUS Computer GmbH Address: HARKORT STR. 21-23, 40880 RATINGEN, GERMANY
Authorised distributors in Turkey	BOGAZICI BIL GISAYAR SAN. VE TIC. A.S. Tel: +90 212 3311000 Address: AYAZAGA MAH. KEMERBURGAZ CAD. NO.10 AYAZAGA/ISTANBUL
	CIZGI Elektronik San. Tic. Ltd. Sti. Tel: +90 212 3567070 Address: CEMAL SURURI CD. HALIM MERIC IS MERKEZI No: 15/C D:5-6 34394 MECIDIYEKOY/ ISTANBUL

EEE Yönetmeliğine Uygundur.