



*AUDIX Technology Corp.
No. 53-11, Dingfu, Linkou, Dist.,
New Taipei City 244, Taiwan*

APPENDIX C

*Tel: +886 2 26099301
Fax: +886 2 26099303*

APPENDIX C

EUT PHOTOGRAPHS

(Model: (1)RT-AC51U (2)RT-AC750)

File Number: C1M1606078

Report Number: EM-F160401

This test report may be reproduced in full only. The document may only be updated by AUDIX Technology Corp. personnel. Any changes will be noted in the Document History section of the report.

Figure 1
General Appearance (Front & Side View)

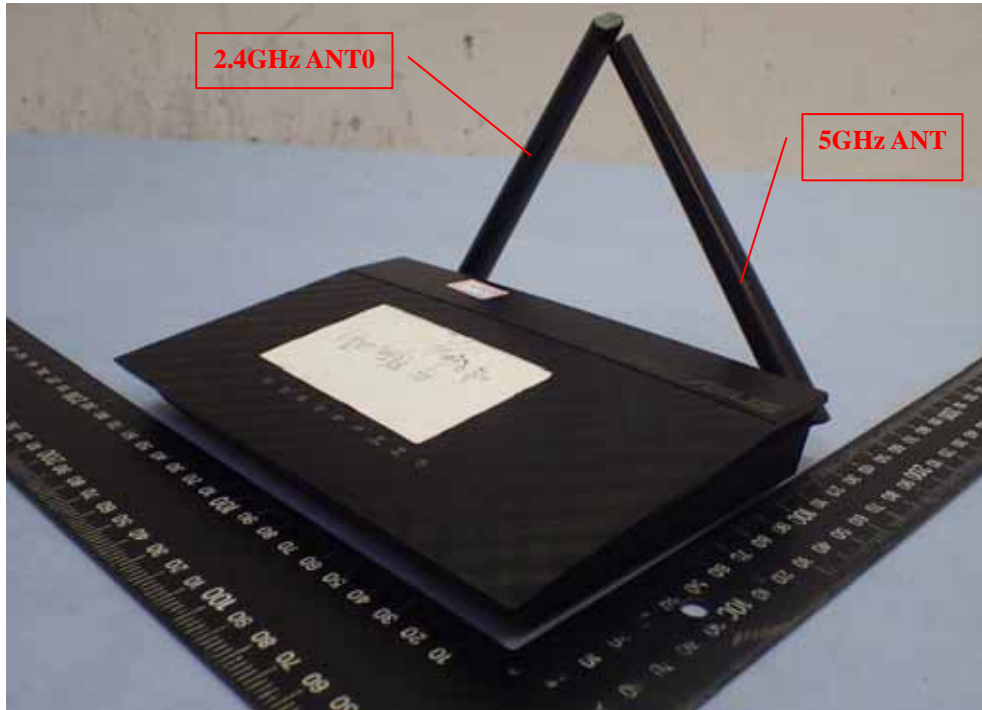


Figure 2
General Appearance (Back & Side View)



Figure 3
General Appearance (I/O View)



Figure 4
Internal View (Removed Cover)



Figure 5

Internal View (Main Board, Front View)



Figure 6

Internal View (Main Board, Back View)

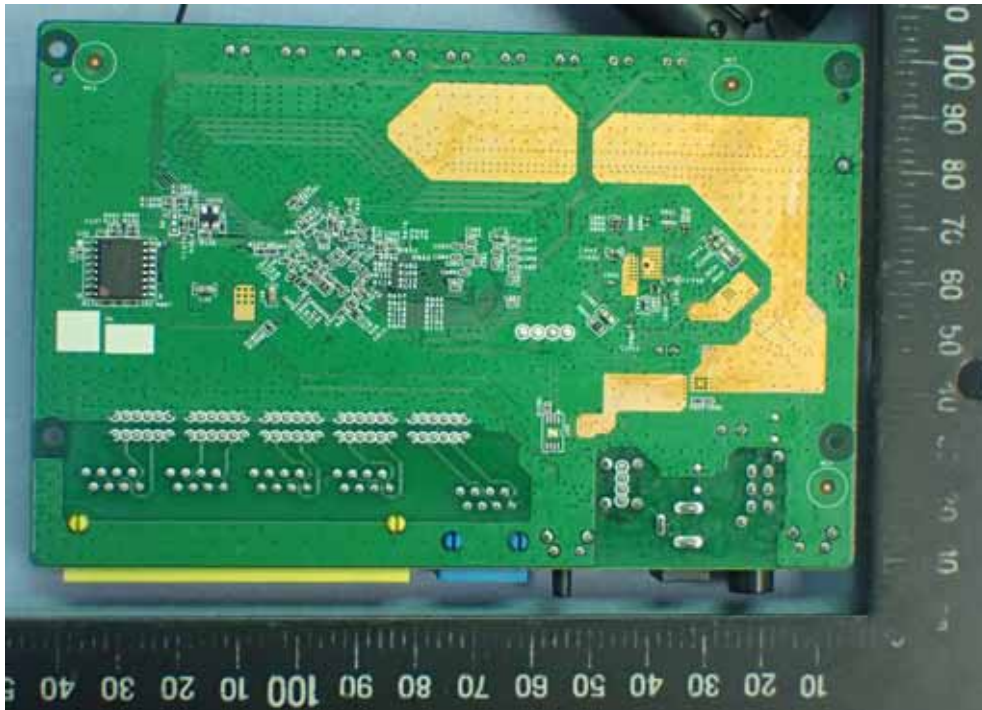


Figure 7
Internal View (2.4GHz Chipset)

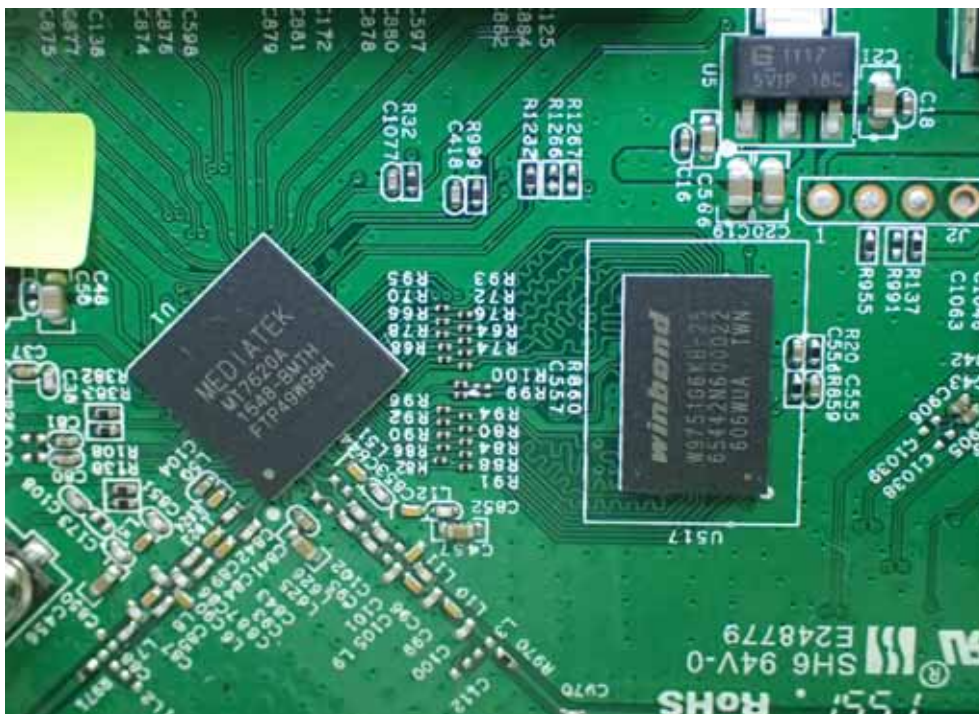


Figure 8
Internal View (5GHz Chipset)

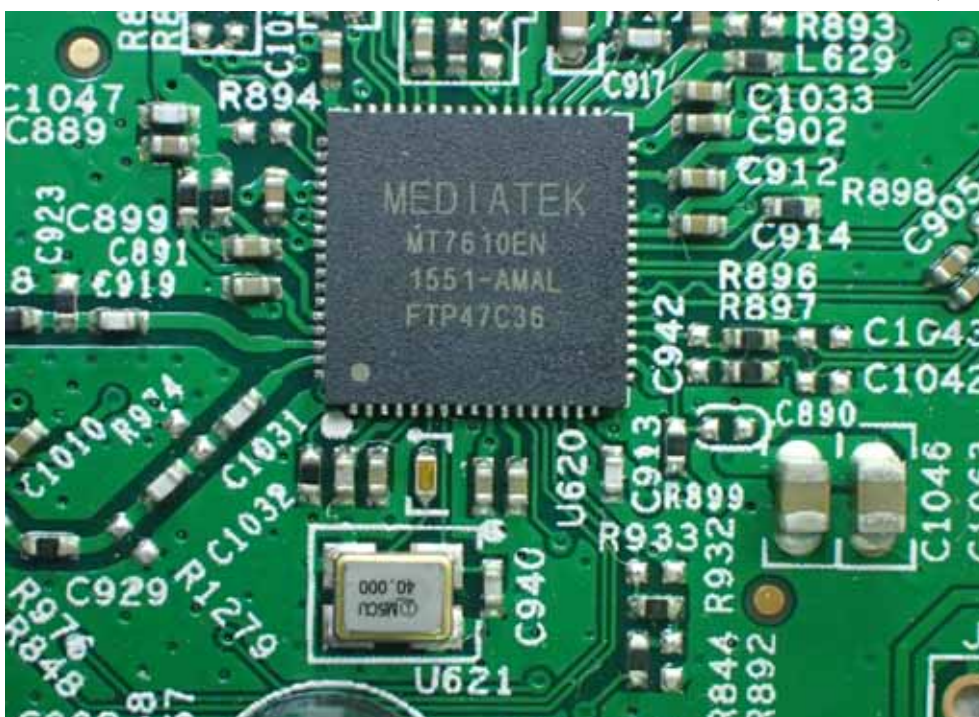


Figure 9

Internal View (2.4GHz ANT1, Front View)

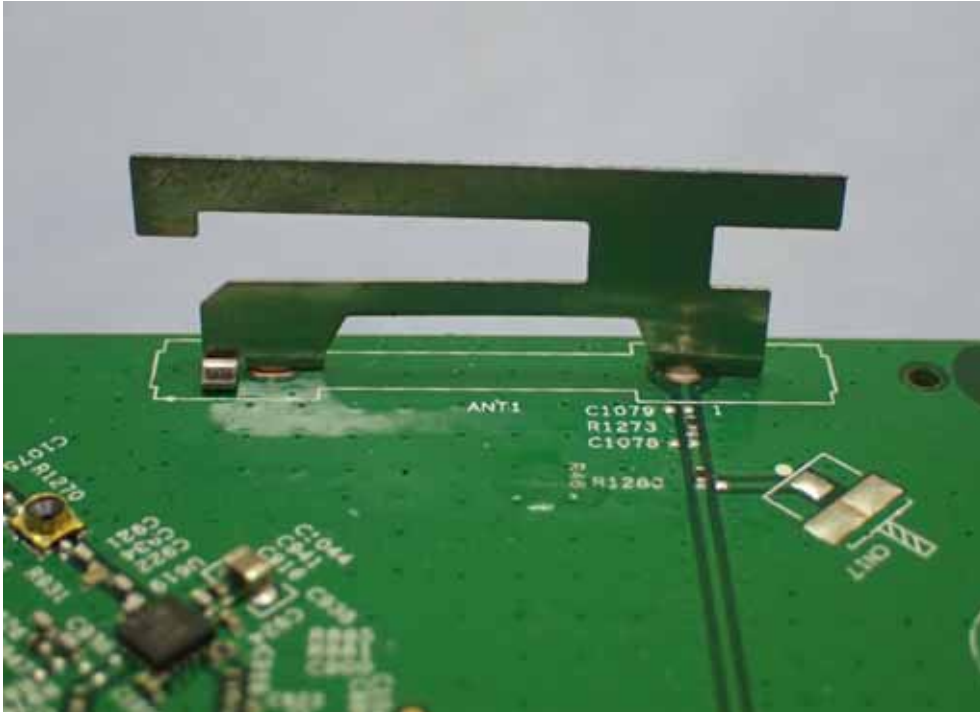


Figure 10

Internal View (2.4GHz ANT1, Back View)

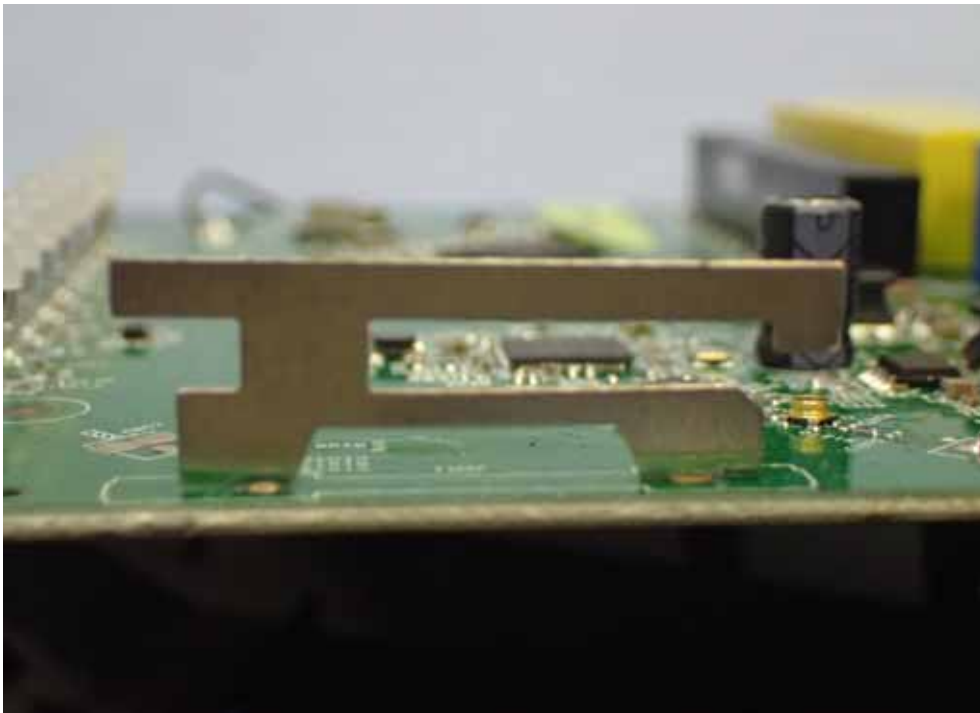


Figure 11

Switching Adapter, S12B22-120A100-C4, General Appearance (Front View)



Figure 12

Switching Adapter, S12B22-120A100-C4, General Appearance (Back View)



Figure 13

Switching Adapter, S12B22-120A100-C4, General Appearance (Label View)



Figure 14

Switching Adapter, SUN-1200100US, General Appearance (Front View)



Figure 15

Switching Adapter, SUN-1200100US, General Appearance (Back View)



Figure 16

Switching Adapter, SUN-1200100US, General Appearance (Label View)

