

EUT Internal Photos

Figure 5  
General Appearance (I/O View)



Figure 6  
Internal View (Removed Bottom Cover)

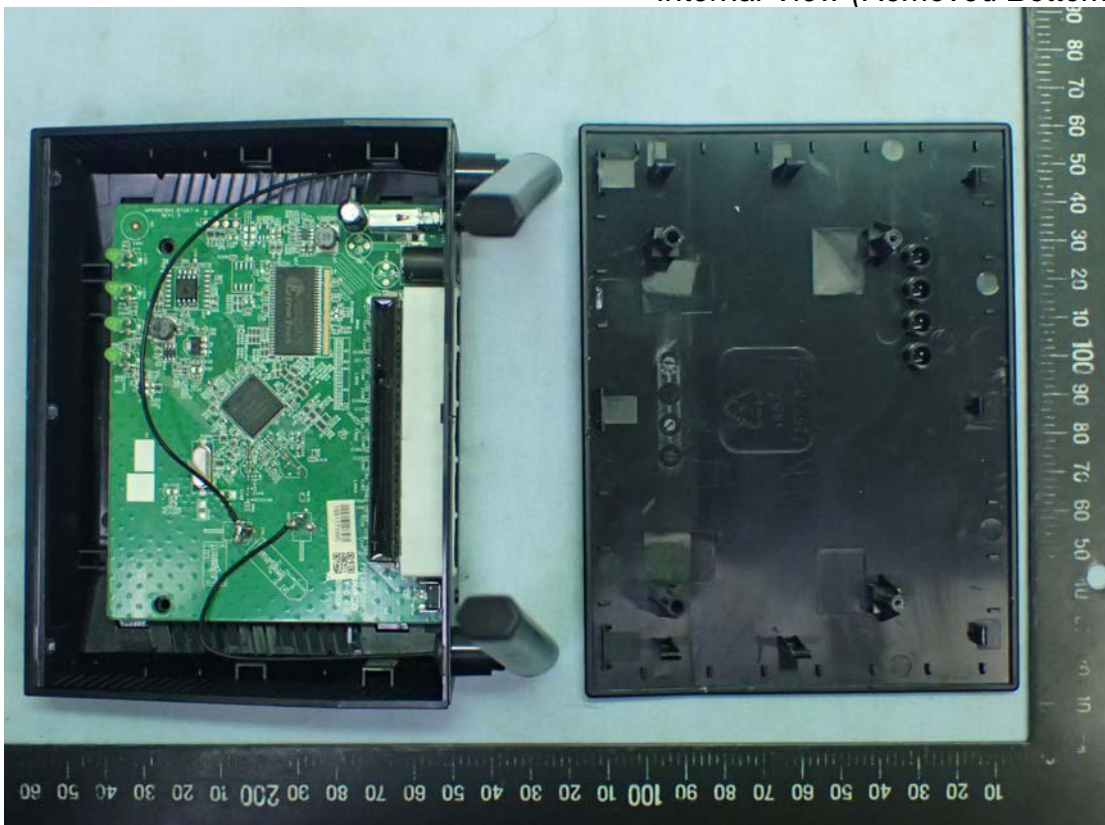


Figure 7  
Internal View (Main Board/Front View)

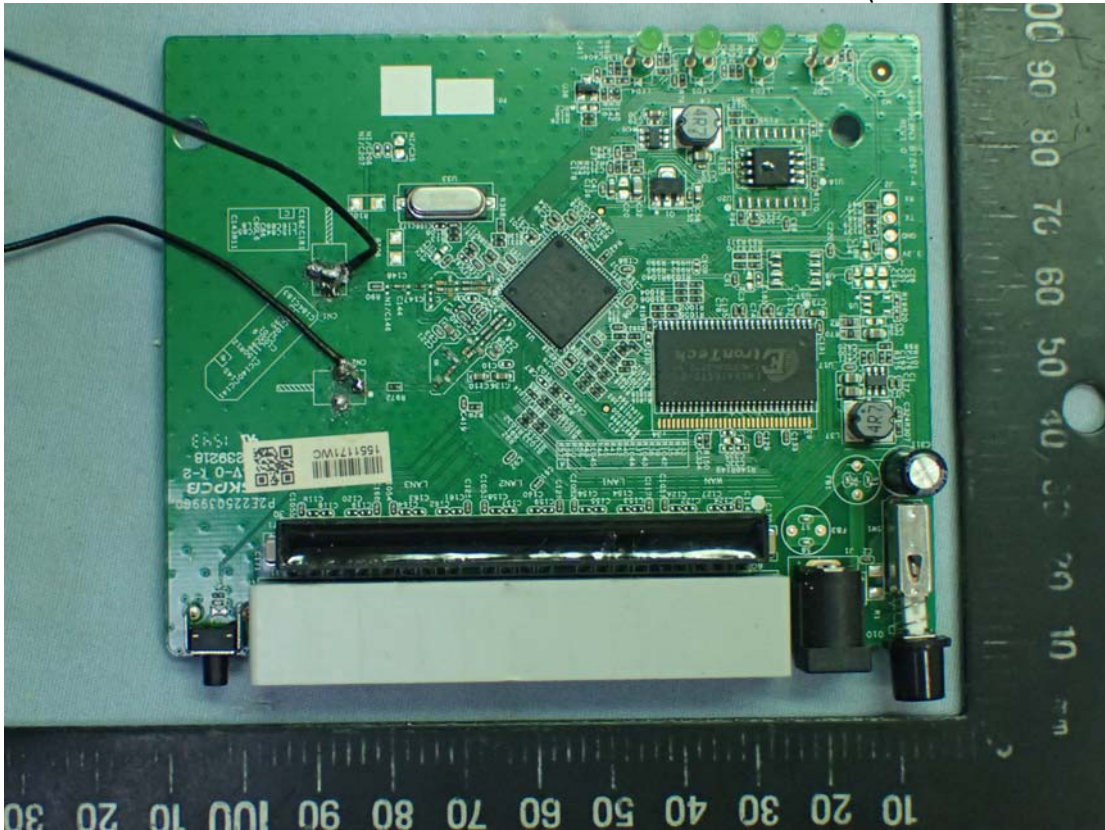


Figure 8  
Internal View (Main Board/Back View)

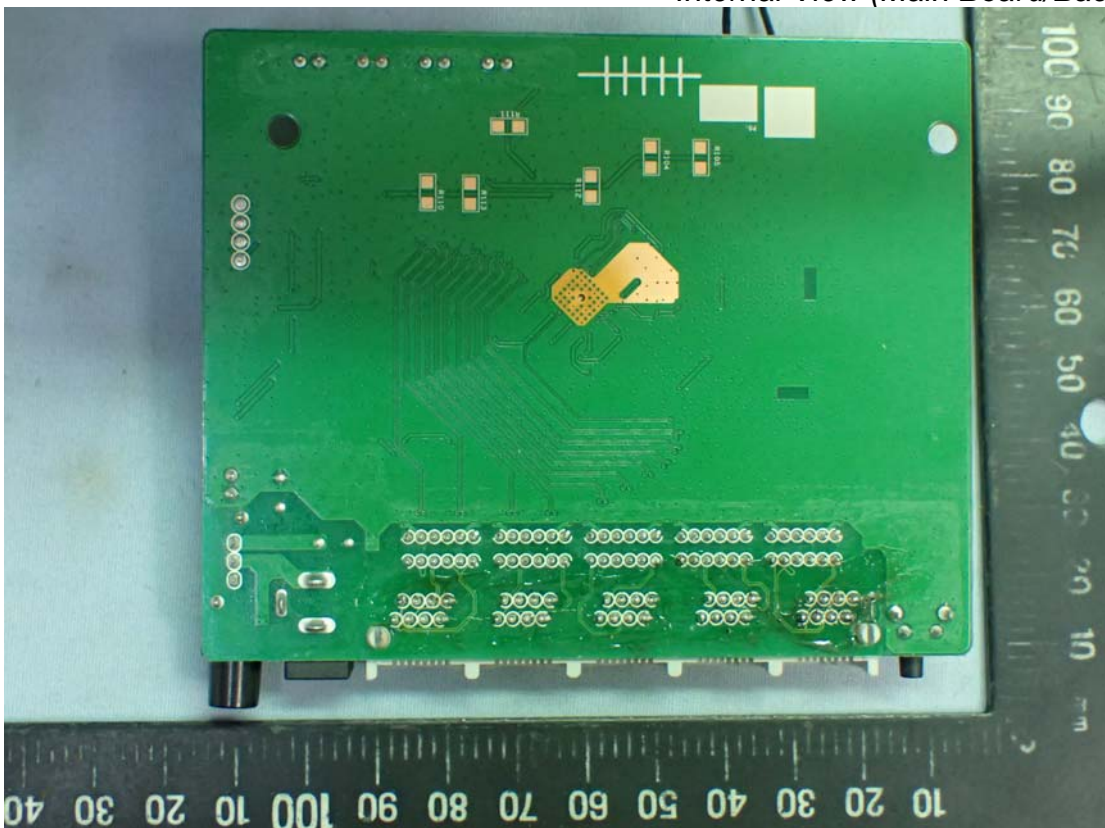


Figure 9  
Power Adapter



Figure 10  
Power Adapter (Back View)

