

## **Appendix C – Highest Test Plots**

Test Date : 2024-04-26 | Ambient Temp : 22.8 °C | Tissue Temp : 22.5 °C

**Test Mode**

**1\_WLAN2.4G\_802.11b\_Bottom of laptop\_0mm\_Ch6\_Ant 0**

**Device Under Test Properties**

Manufacturer or Brand	Model No. or Code Name	Sample No. or IMEI	DUT Type
ASUS	GA605W	A002	Laptop

**Exposure Conditions**

Phantom Section	Band	Group, UID	Frequency [MHz], Channel Number	Conversion Factor	TSL Conductivity [S/m]	TSL Permittivity
Flat	WLAN 2.4GHz	WLAN, 10012 - CAB	2437.000, 6	7.05	1.78	39.9

**Hardware Setup**

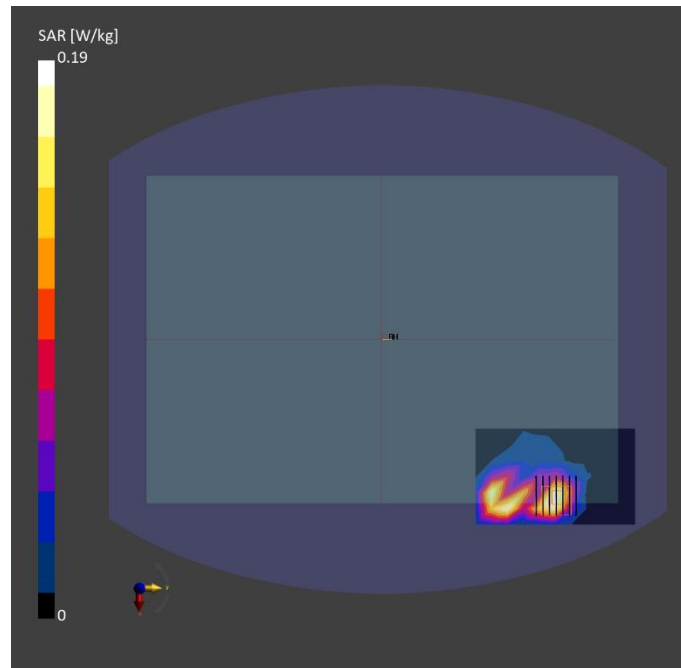
Phantom	Tissue Simulating Liquid	Probe   Calibration Date	DAE   Calibration Date
ELI V8.0 (20deg probe tilt) - 2141	HBBL-600-10000	EX3DV4 - SN7737 / 2023-06-05	DAE4 Sn1743 / 2023-08-17

**Scan Setup**

	Area Scan	Zoom Scan
Grid Extents [mm]	72.0 x 120.0	30.0 x 30.0 x 30.0
Grid Steps [mm]	12.0 x 12.0	5.0 x 5.0 x 5.0
Sensor Surface [mm]	3.0	1.4
Graded Grid	N/A	Yes
Grading Ratio	N/A	1.4

**Measurement Results**

	Area Scan	Zoom Scan
psSAR-1g [W/kg]	0.151	<b>0.142</b>
psSAR-10g [W/kg]	0.073	<b>0.064</b>
Power Drift [dB]		0.07
TSL Correction	Positive only	Positive only
M2 / M1 [%]		46.2
Dist 3dB Peak [mm]		7.7



Test Date : 2024-04-26 | Ambient Temp : 22.8 °C | Tissue Temp : 22.5 °C

**Test Mode**

**2\_WLAN5.3G\_802.11ac VHT160\_Bottom of laptop\_0mm\_Ch50\_Ant 1**

**Device Under Test Properties**

Manufacturer or Brand	Model No. or Code Name	Sample No. or IMEI	DUT Type
ASUS	GA605W	A002	Laptop

**Exposure Conditions**

Phantom Section	Band	Group, UID	Frequency [MHz], Channel Number	Conversion Factor	TSL Conductivity [S/m]	TSL Permittivity
Flat	WLAN 5GHz	WLAN, 10554 - AAD	5250.000, 50	5.58	4.52	36.5

**Hardware Setup**

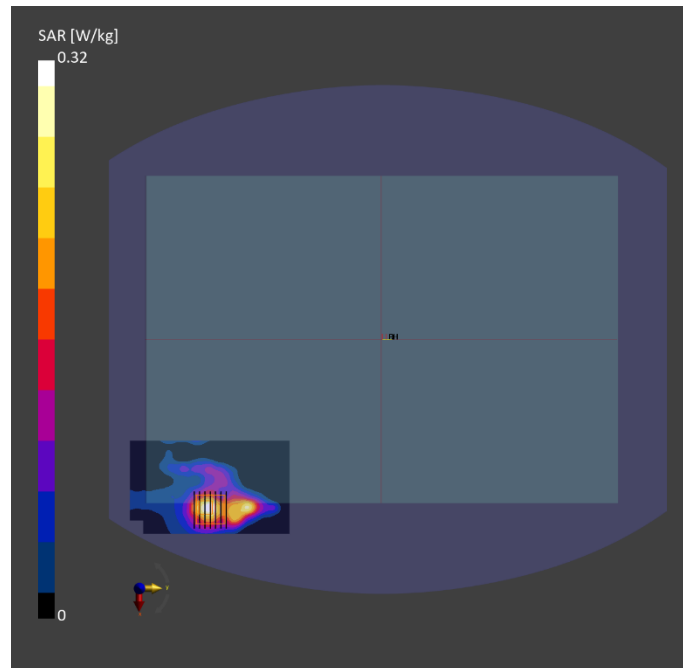
Phantom	Tissue Simulating Liquid	Probe   Calibration Date	DAE   Calibration Date
ELI V8.0 (20deg probe tilt) - 2141	HBBL-600-10000	EX3DV4 - SN7737 / 2023-06-05	DAE4 Sn1743 / 2023-08-17

**Scan Setup**

	Area Scan	Zoom Scan
Grid Extents [mm]	60.0 x 120.0	24.0 x 24.0 x 22.0
Grid Steps [mm]	10.0 x 10.0	4.0 x 4.0 x 1.4
Sensor Surface [mm]	3.0	1.4
Graded Grid	N/A	Yes
Grading Ratio	N/A	1.4

**Measurement Results**

	Area Scan	Zoom Scan
psSAR-1g [W/kg]	0.110	<b>0.129</b>
psSAR-10g [W/kg]	0.040	<b>0.038</b>
Power Drift [dB]		-0.09
TSL Correction	Positive only	Positive only
M2 / M1 [%]		66.2
Dist 3dB Peak [mm]		8.3



Test Date : 2024-04-26 | Ambient Temp : 22.8 °C | Tissue Temp : 22.5 °C

**Test Mode**

**3\_WLAN5.6G\_802.11ac VHT160\_Bottom of laptop\_0mm\_Ch114\_Ant 0**

**Device Under Test Properties**

Manufacturer or Brand	Model No. or Code Name	Sample No. or IMEI	DUT Type
ASUS	GA605W	A002	Laptop

**Exposure Conditions**

Phantom Section	Band	Group, UID	Frequency [MHz], Channel Number	Conversion Factor	TSL Conductivity [S/m]	TSL Permittivity
Flat	WLAN 5GHz	WLAN, 10554 - AAD	5570.000, 114	4.83	4.88	36.0

**Hardware Setup**

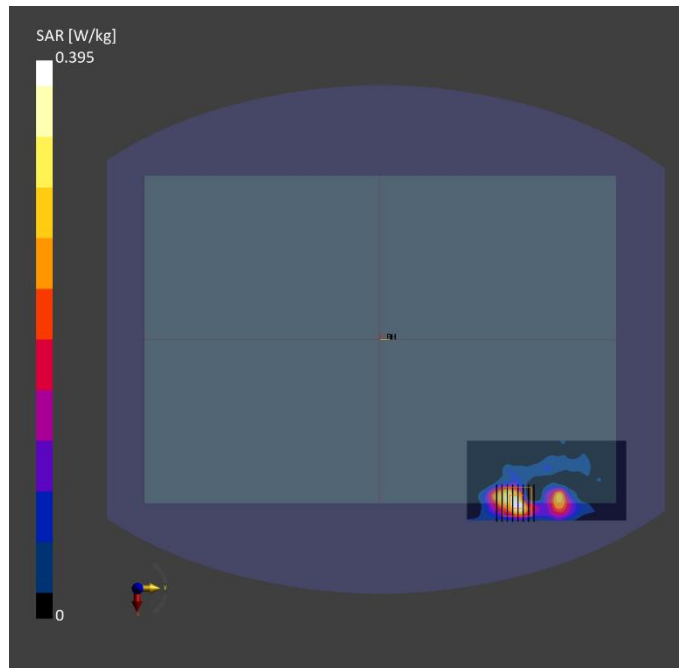
Phantom	Tissue Simulating Liquid	Probe   Calibration Date	DAE   Calibration Date
ELI V8.0 (20deg probe tilt) - 2141	HBBL-600-10000	EX3DV4 - SN7737 / 2023-06-05	DAE4 Sn1743 / 2023-08-17

**Scan Setup**

	Area Scan	Zoom Scan
Grid Extents [mm]	60.0 x 120.0	24.0 x 24.0 x 22.0
Grid Steps [mm]	10.0 x 10.0	4.0 x 4.0 x 1.4
Sensor Surface [mm]	3.0	1.4
Graded Grid	N/A	Yes
Grading Ratio	N/A	1.4

**Measurement Results**

	Area Scan	Zoom Scan
psSAR-1g [W/kg]	0.144	<b>0.151</b>
psSAR-10g [W/kg]	0.052	<b>0.045</b>
Power Drift [dB]		0.15
TSL Correction	Positive only	Positive only
M2 / M1 [%]		67.6
Dist 3dB Peak [mm]		6.1



Test Date : 2024-04-26 | Ambient Temp : 22.8 °C | Tissue Temp : 22.5 °C

**Test Mode**

**4\_WLAN5.8G\_802.11ac VHT160\_Bottom of laptop\_0mm\_Ch163\_Ant 1**

**Device Under Test Properties**

Manufacturer or Brand	Model No. or Code Name	Sample No. or IMEI	DUT Type
ASUS	GA605W	A002	Laptop

**Exposure Conditions**

Phantom Section	Band	Group, UID	Frequency [MHz], Channel Number	Conversion Factor	TSL Conductivity [S/m]	TSL Permittivity
Flat	WLAN 5GHz	WLAN, 10554 - AAD	5815.000, 163	4.9	5.18	35.5

**Hardware Setup**

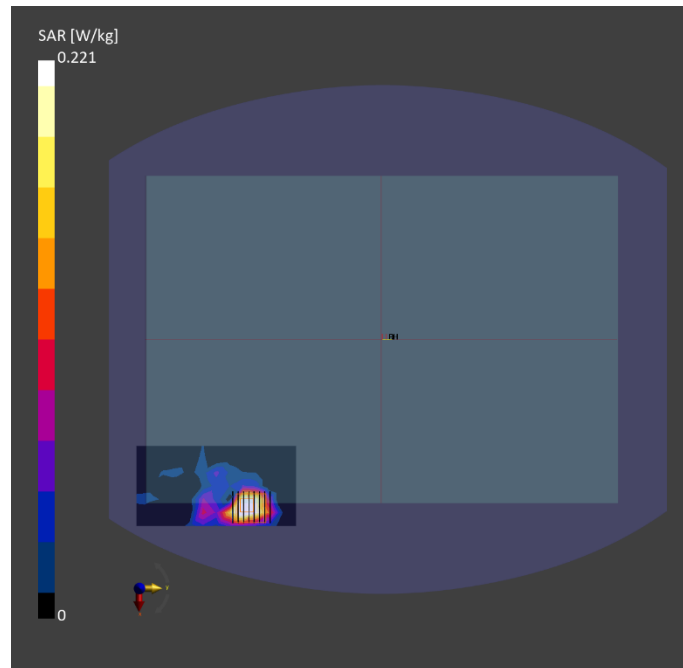
Phantom	Tissue Simulating Liquid	Probe   Calibration Date	DAE   Calibration Date
ELI V8.0 (20deg probe tilt) - 2141	HBBL-600-10000	EX3DV4 - SN7737 / 2023-06-05	DAE4 Sn1743 / 2023-08-17

**Scan Setup**

	Area Scan	Zoom Scan
Grid Extents [mm]	60.0 x 120.0	24.0 x 24.0 x 22.0
Grid Steps [mm]	10.0 x 10.0	4.0 x 4.0 x 1.4
Sensor Surface [mm]	3.0	1.4
Graded Grid	N/A	Yes
Grading Ratio	N/A	1.4

**Measurement Results**

	Area Scan	Zoom Scan
psSAR-1g [W/kg]	0.202	<b>0.219</b>
psSAR-10g [W/kg]	0.074	<b>0.062</b>
Power Drift [dB]		-0.03
TSL Correction	Positive only	Positive only
M2 / M1 [%]		64.7
Dist 3dB Peak [mm]		5.6



Test Date : 2024-04-26 | Ambient Temp : 22.8 °C | Tissue Temp : 22.5 °C

**Test Mode**

**7\_UNII-5\_802.11a\_Bottom of laptop\_0mm\_Ch45\_Ant 0**

**Device Under Test Properties**

Manufacturer or Brand	Model No. or Code Name	Sample No. or IMEI	DUT Type
ASUS	GA605W	A002	Laptop

**Exposure Conditions**

Phantom Section	Band	Group, UID	Frequency [MHz], Channel Number	Conversion Factor	TSL Conductivity [S/m]	TSL Permittivity
Flat	U-NII-5	WLAN, 10062 - CAD	6175.000, 45	5.0	5.58	34.9

**Hardware Setup**

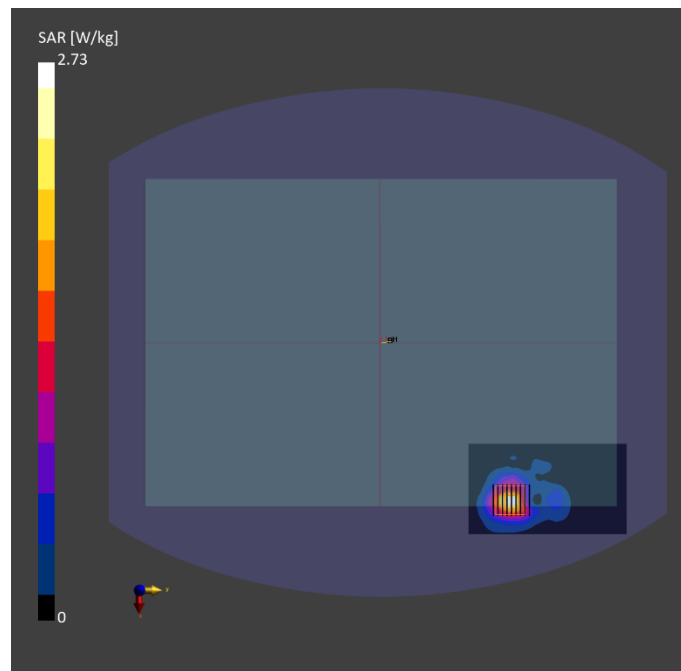
Phantom	Tissue Simulating Liquid	Probe   Calibration Date	DAE   Calibration Date
ELI V8.0 (20deg probe tilt) - 2141	HBBL-600-10000	EX3DV4 - SN7737 / 2023-06-05	DAE4 Sn1743 / 2023-08-17

**Scan Setup**

	Area Scan	Zoom Scan
Grid Extents [mm]	68.0 x 119.0	22.0 x 22.0 x 22.0
Grid Steps [mm]	8.5 x 8.5	3.4 x 3.4 x 1.4
Sensor Surface [mm]	3.0	1.4
Graded Grid	N/A	Yes
Grading Ratio	N/A	1.4

**Measurement Results**

	Area Scan	Zoom Scan
psSAR-1g [W/kg]	0.972	<b>1.01</b>
psSAR-10g [W/kg]	0.330	<b>0.344</b>
psAPD (1.0 cm <sup>2</sup> , sq) [W/m <sup>2</sup> ]		<b>10.5</b>
psAPD (4.0 cm <sup>2</sup> , sq) [W/m <sup>2</sup> ]		<b>7.96</b>
Power Drift [dB]		-0.03
TSL Correction	Positive only	Positive only
M2 / M1 [%]		53.8
Dist 3dB Peak [mm]		8.2



Test Date : 2024-04-26 | Ambient Temp : 22.8 °C | Tissue Temp : 22.5 °C

**Test Mode**

**8\_UNII-6\_802.11ax HE160\_Bottom of laptop\_0mm\_Ch111\_Ant 1**

**Device Under Test Properties**

Manufacturer or Brand	Model No. or Code Name	Sample No. or IMEI	DUT Type
ASUS	GA605W	A002	Laptop

**Exposure Conditions**

Phantom Section	Band	Group, UID	Frequency [MHz], Channel Number	Conversion Factor	TSL Conductivity [S/m]	TSL Permittivity
Flat	U-NII-6	WLAN, 10755 - AAC	6505.000, 111	5.0	5.98	34.4

**Hardware Setup**

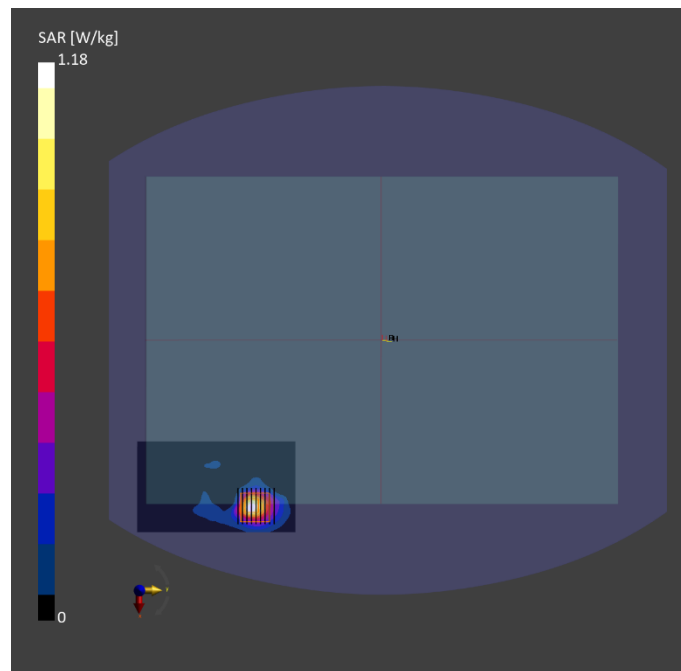
Phantom	Tissue Simulating Liquid	Probe   Calibration Date	DAE   Calibration Date
ELI V8.0 (20deg probe tilt) - 2141	HBBL-600-10000	EX3DV4 - SN7737 / 2023-06-05	DAE4 Sn1743 / 2023-08-17

**Scan Setup**

	Area Scan	Zoom Scan
Grid Extents [mm]	68.0 x 119.0	22.0 x 22.0 x 22.0
Grid Steps [mm]	8.5 x 8.5	3.4 x 3.4 x 1.4
Sensor Surface [mm]	3.0	1.4
Graded Grid	N/A	Yes
Grading Ratio	N/A	1.4

**Measurement Results**

	Area Scan	Zoom Scan
psSAR-1g [W/kg]	0.338	<b>0.438</b>
psSAR-10g [W/kg]	0.110	<b>0.137</b>
psAPD (1.0 cm <sup>2</sup> , sq) [W/m <sup>2</sup> ]		<b>4.38</b>
psAPD (4.0 cm <sup>2</sup> , sq) [W/m <sup>2</sup> ]		<b>3.13</b>
Power Drift [dB]		0.12
TSL Correction	Positive only	Positive only
M2 / M1 [%]		48.1
Dist 3dB Peak [mm]		6.5



Test Date : 2024-04-26 | Ambient Temp : 22.8 °C | Tissue Temp : 22.5 °C

**Test Mode**

**9\_UNII-7\_802.11a\_Bottom of laptop\_0mm\_Ch149\_Ant 0**

**Device Under Test Properties**

Manufacturer or Brand	Model No. or Code Name	Sample No. or IMEI	DUT Type
ASUS	GA605W	A002	Laptop

**Exposure Conditions**

Phantom Section	Band	Group, UID	Frequency [MHz], Channel Number	Conversion Factor	TSL Conductivity [S/m]	TSL Permittivity
Flat	U-NII-7	WLAN, 10062 - CAD	6695.000, 149	5.0	6.20	34.0

**Hardware Setup**

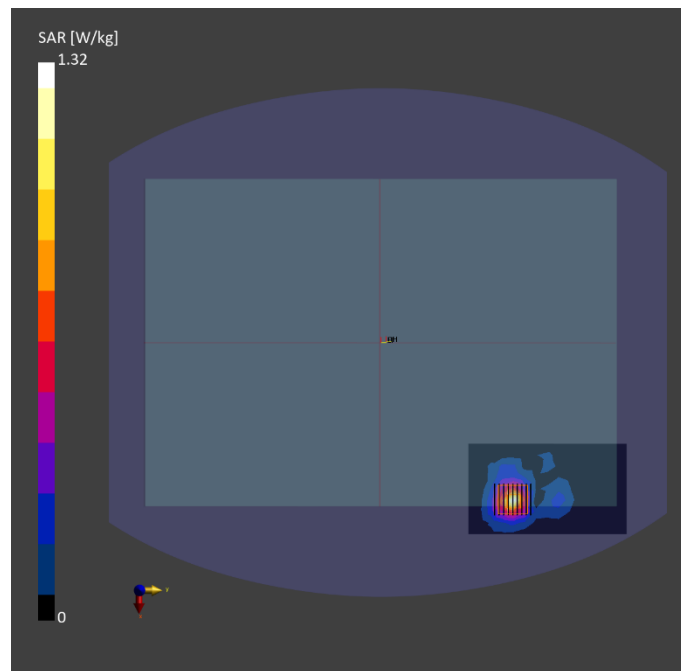
Phantom	Tissue Simulating Liquid	Probe   Calibration Date	DAE   Calibration Date
ELI V8.0 (20deg probe tilt) - 2141	HBBL-600-10000	EX3DV4 - SN7737 / 2023-06-05	DAE4 Sn1743 / 2023-08-17

**Scan Setup**

	Area Scan	Zoom Scan
Grid Extents [mm]	68.0 x 119.0	22.0 x 22.0 x 22.0
Grid Steps [mm]	8.5 x 8.5	3.4 x 3.4 x 1.4
Sensor Surface [mm]	3.0	1.4
Graded Grid	N/A	Yes
Grading Ratio	N/A	1.4

**Measurement Results**

	Area Scan	Zoom Scan
psSAR-1g [W/kg]	0.954	<b>1.01</b>
psSAR-10g [W/kg]	0.308	<b>0.319</b>
psAPD (1.0 cm <sup>2</sup> , sq) [W/m <sup>2</sup> ]		<b>10.1</b>
psAPD (4.0 cm <sup>2</sup> , sq) [W/m <sup>2</sup> ]		<b>7.29</b>
Power Drift [dB]		0.06
TSL Correction	Positive only	Positive only
M2 / M1 [%]		49.5
Dist 3dB Peak [mm]		8.2





Test Date : 2024-04-26 | Ambient Temp : 22.8 °C | Tissue Temp : 22.5 °C

**Test Mode**

**10\_UNII-8\_802.11ax HE160\_Bottom of laptop\_0mm\_Ch207\_Ant 0**

**Device Under Test Properties**

Manufacturer or Brand	Model No. or Code Name	Sample No. or IMEI	DUT Type
ASUS	GA605W	A002	Laptop

**Exposure Conditions**

Phantom Section	Band	Group, UID	Frequency [MHz], Channel Number	Conversion Factor	TSL Conductivity [S/m]	TSL Permittivity
Flat	U-NII-8	WLAN, 10755 - AAC	6985.000, 207	5.0	6.53	33.6

**Hardware Setup**

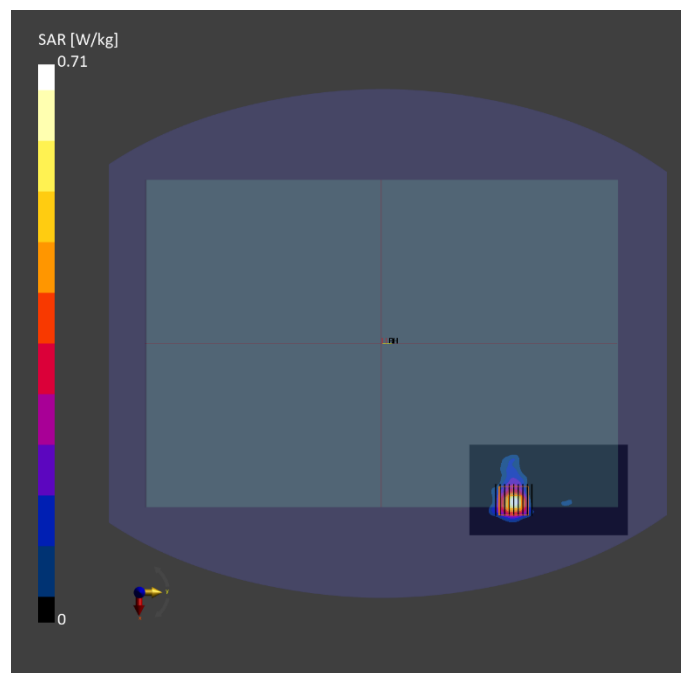
Phantom	Tissue Simulating Liquid	Probe   Calibration Date	DAE   Calibration Date
ELI V8.0 (20deg probe tilt) - 2141	HBBL-600-10000	EX3DV4 - SN7737 / 2023-06-05	DAE4 Sn1743 / 2023-08-17

**Scan Setup**

	Area Scan	Zoom Scan
Grid Extents [mm]	68.0 x 119.0	22.0 x 22.0 x 22.0
Grid Steps [mm]	8.5 x 8.5	3.4 x 3.4 x 1.4
Sensor Surface [mm]	3.0	1.4
Graded Grid	N/A	Yes
Grading Ratio	N/A	1.4

**Measurement Results**

	Area Scan	Zoom Scan
psSAR-1g [W/kg]	0.552	<b>0.580</b>
psSAR-10g [W/kg]	0.176	<b>0.179</b>
psAPD (1.0 cm <sup>2</sup> , sq) [W/m <sup>2</sup> ]		<b>5.80</b>
psAPD (4.0 cm <sup>2</sup> , sq) [W/m <sup>2</sup> ]		<b>4.11</b>
Power Drift [dB]		0.04
TSL Correction	Positive only	Positive only
M2 / M1 [%]		54.6
Dist 3dB Peak [mm]		6.8



Test Date : 2024-04-29 | Ambient Temp : 22.6 °C

**Test Mode**

**11\_UNII-5\_802.11a\_Bottom of Laptop\_0mm\_Ch45\_Ant 1**

**Device Under Test Properties**

Manufacturer or Brand	Model No. or Code Name	Sample No. or IMEI	DUT Type
ASUS	GA605W	A002	Laptop

**Exposure Conditions**

Phantom Section	Band	Group, UID	Frequency [MHz], Channel Number	Conversion Factor
5G	U-NII-5	WLAN, 10062 - CAD	6175.0, 45	1.0

**Hardware Setup**

Phantom	Medium	Probe   Calibration Date	DAE   Calibration Date
mmWave - 1102	Air	EUmmWV3 - SN9403_F1-55GHz / 2023-12-05	DAE4 Sn1741 / 2023-08-23

**Scan Setup**

	5G Scan
Grid Extents [mm]	97.0 x 97.0
Grid Steps [mm]	0.0515 x 0.0515
Sensor Surface [mm]	2.0

**Measurement Results**

	5G Scan
Avg. Area [cm <sup>2</sup> ]	4.00
psPD n+ [W/m <sup>2</sup> ]	<b>3.60</b>
psPD tot+ [W/m <sup>2</sup> ]	<b>5.60</b>
psPD mod+ [W/m <sup>2</sup> ]	7.34
E max [V/m]	78.5
Power Drift [dB]	-0.03

