

Appendix C – Highest Test Plots

Test Date : 2024-04-30 | Ambient Temp : 22.7 °C | Tissue Temp : 21.5 °C

Test Mode

1_WLAN2.4G_802.11ac_VHT40_Bottom Side_0mm_Ch13_Ant 0+1

Device Under Test Properties

Manufacturer or Brand	Model No. or Code Name	Sample No. or IMEI	DUT Type
ASUS	HN7306W	A004	Convertible PC

Exposure Conditions

Phantom Section	Band	Group, UID	Frequency [MHz], Channel Number	Conversion Factor	TSL Conductivity [S/m]	TSL Permittivity
Flat	WLAN 2.4GHz	WLAN, 10534 - AAC	2472.000, 13	8.2	1.82	39.3

Hardware Setup

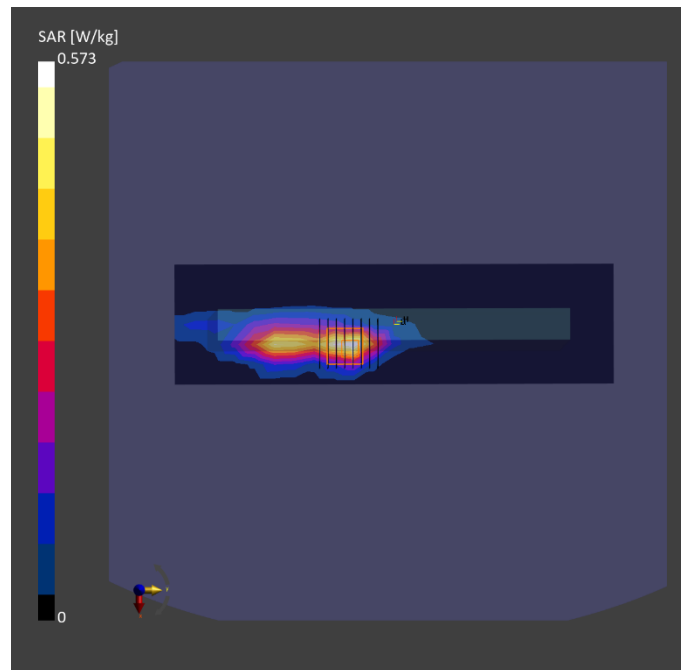
Phantom	Tissue Simulating Liquid	Probe Calibration Date	DAE Calibration Date
ELI V8.0 (20deg probe tilt) - 2179	HBBL-600-10000	EX3DV4 - SN7650 / 2023-05-22	DAE4 Sn1741 / 2023-08-23

Scan Setup

	Area Scan	Zoom Scan
Grid Extents [mm]	72.0 x 264.0	30.0 x 30.0 x 30.0
Grid Steps [mm]	12.0 x 12.0	5.0 x 5.0 x 5.0
Sensor Surface [mm]	3.0	1.4
Graded Grid	N/A	Yes
Grading Ratio	N/A	1.4

Measurement Results

	Area Scan	Zoom Scan
psSAR-1g [W/kg]	0.440	0.481
psSAR-10g [W/kg]	0.198	0.202
Power Drift [dB]		0.01
TSL Correction	Positive only	Positive only
M2 / M1 [%]		36.9
Dist 3dB Peak [mm]		6.1



Test Date : 2024-05-02 | Ambient Temp : 22.5 °C | Tissue Temp : 21.3 °C

Test Mode

2_WLAN5.2G_802.11ac VHT80_Bottom Side_0mm_Ch42_Ant 0

Device Under Test Properties

Manufacturer or Brand	Model No. or Code Name	Sample No. or IMEI	DUT Type
ASUS	HN7306W	A004	Convertible PC

Exposure Conditions

Phantom Section	Band	Group, UID	Frequency [MHz], Channel Number	Conversion Factor	TSL Conductivity [S/m]	TSL Permittivity
Flat	WLAN 5GHz	WLAN, 10544 - AAC	5210.000, 42	5.91	4.41	35.7

Hardware Setup

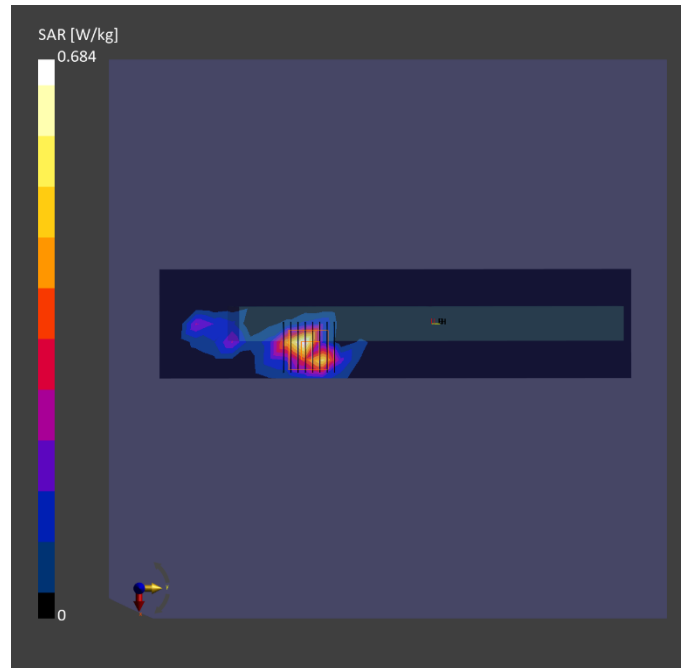
Phantom	Tissue Simulating Liquid	Probe Calibration Date	DAE Calibration Date
ELI V8.0 (20deg probe tilt) - 2179	HBBL-600-10000	EX3DV4 - SN7650 / 2023-05-22	DAE4 Sn1741 / 2023-08-23

Scan Setup

	Area Scan	Zoom Scan
Grid Extents [mm]	60.0 x 260.0	24.0 x 24.0 x 22.0
Grid Steps [mm]	10.0 x 10.0	4.0 x 4.0 x 1.4
Sensor Surface [mm]	3.0	1.4
Graded Grid	N/A	Yes
Grading Ratio	N/A	1.4

Measurement Results

	Area Scan	Zoom Scan
psSAR-1g [W/kg]	0.443	0.531
psSAR-10g [W/kg]	0.153	0.162
Power Drift [dB]		-0.04
TSL Correction	Positive only	Positive only
M2 / M1 [%]		64.9
Dist 3dB Peak [mm]		4.6



Test Date : 2024-05-01 | Ambient Temp : 22.5 °C | Tissue Temp : 21.3 °C

Test Mode

3_WLAN5.3G_802.11ac_VHT80_Bottom Side_0mm_Ch58_Ant 0+1

Device Under Test Properties

Manufacturer or Brand	Model No. or Code Name	Sample No. or IMEI	DUT Type
ASUS	HN7306W	A004	Convertible PC

Exposure Conditions

Phantom Section	Band	Group, UID	Frequency [MHz], Channel Number	Conversion Factor	TSL Conductivity [S/m]	TSL Permittivity
Flat	WLAN 5GHz	WLAN, 10544 - AAC	5290.000, 58	5.91	4.50	35.6

Hardware Setup

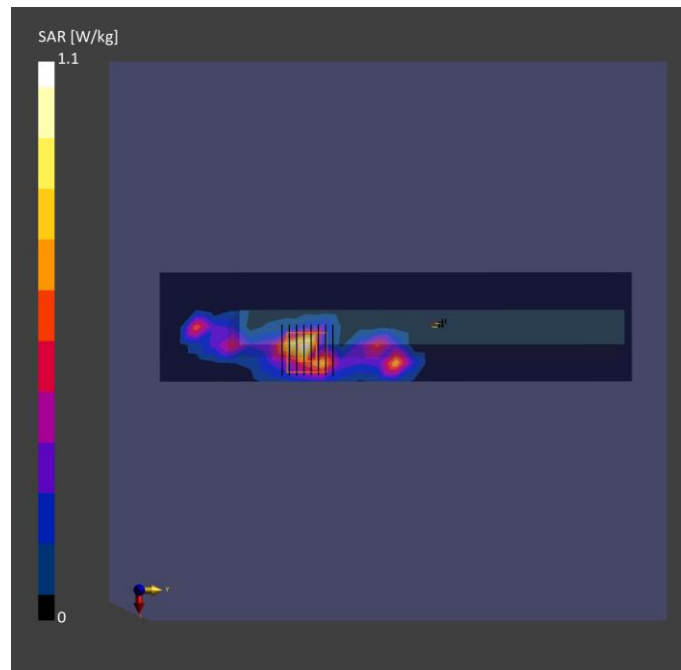
Phantom	Tissue Simulating Liquid	Probe Calibration Date	DAE Calibration Date
ELI V8.0 (20deg probe tilt) - 2179	HBBL-600-10000	EX3DV4 - SN7650 / 2023-05-22	DAE4 Sn1741 / 2023-08-23

Scan Setup

	Area Scan	Zoom Scan
Grid Extents [mm]	60.0 x 260.0	24.0 x 24.0 x 22.0
Grid Steps [mm]	10.0 x 10.0	4.0 x 4.0 x 1.4
Sensor Surface [mm]	3.0	1.4
Graded Grid	N/A	Yes
Grading Ratio	N/A	1.4

Measurement Results

	Area Scan	Zoom Scan
psSAR-1g [W/kg]	0.373	0.423
psSAR-10g [W/kg]	0.128	0.129
Power Drift [dB]		0.01
TSL Correction	Positive only	Positive only
M2 / M1 [%]		60.3
Dist 3dB Peak [mm]		5.6



Test Date : 2024-05-02 | Ambient Temp : 22.3 °C | Tissue Temp : 21.1 °C

Test Mode

4_WLAN5.6G_802.11ac_VHT160_Bottom Side_0mm_Ch114_Ant 0+1

Device Under Test Properties

Manufacturer or Brand	Model No. or Code Name	Sample No. or IMEI	DUT Type
ASUS	HN7306W	A004	Convertible PC

Exposure Conditions

Phantom Section	Band	Group, UID	Frequency [MHz], Channel Number	Conversion Factor	TSL Conductivity [S/m]	TSL Permittivity
Flat	WLAN 5GHz	WLAN, 10554 - AAD	5570.000, 114	5.25	4.91	36.0

Hardware Setup

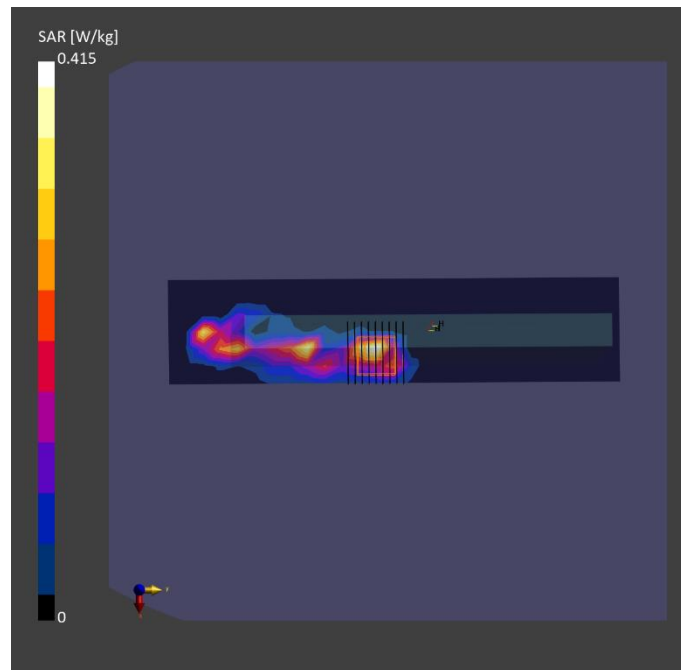
Phantom	Tissue Simulating Liquid	Probe Calibration Date	DAE Calibration Date
ELI V8.0 (20deg probe tilt) - 2179	HBBL-600-10000	EX3DV4 - SN7650 / 2023-05-22	DAE4 Sn1741 / 2023-08-23

Scan Setup

	Area Scan	Zoom Scan
Grid Extents [mm]	60.0 x 260.0	24.0 x 24.0 x 22.0
Grid Steps [mm]	10.0 x 10.0	4.0 x 4.0 x 1.4
Sensor Surface [mm]	3.0	1.4
Graded Grid	N/A	Yes
Grading Ratio	N/A	1.4

Measurement Results

	Area Scan	Zoom Scan
psSAR-1g [W/kg]	0.278	0.282
psSAR-10g [W/kg]	0.093	0.086
Power Drift [dB]		0.19
TSL Correction	Positive only	Positive only
M2 / M1 [%]		57.4
Dist 3dB Peak [mm]		5.6



Test Date : 2024-05-03 | Ambient Temp : 22.8°C | Tissue Temp : 21.4 °C

Test Mode

6_WLAN5.8G_802.11ac VHT160_Bottom Side_0mm_Ch163_Ant 0+1

Device Under Test Properties

Manufacturer or Brand	Model No. or Code Name	Sample No. or IMEI	DUT Type
ASUS	HN7306W	A004	Convertible PC

Exposure Conditions

Phantom Section	Band	Group, UID	Frequency [MHz], Channel Number	Conversion Factor	TSL Conductivity [S/m]	TSL Permittivity
Flat	WLAN 5GHz	WLAN, 10554 - AAD	5815.000, 163	5.28	5.16	35.0

Hardware Setup

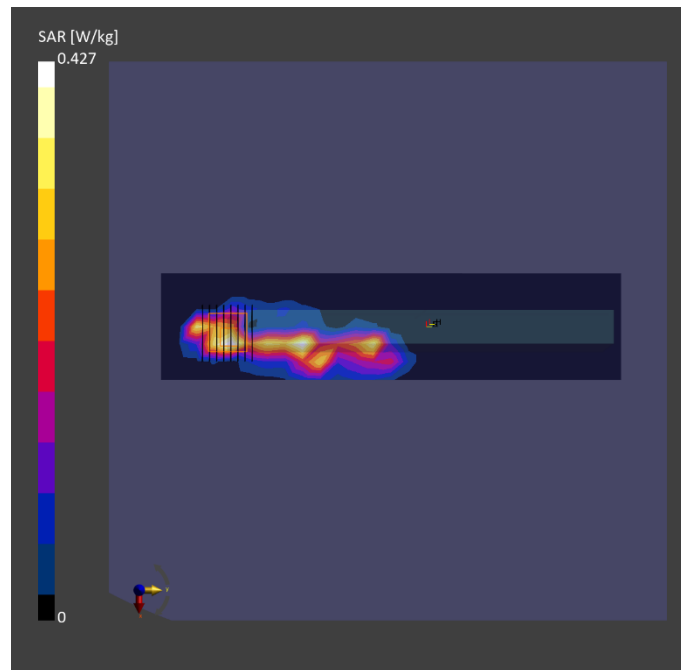
Phantom	Tissue Simulating Liquid	Probe Calibration Date	DAE Calibration Date
ELI V8.0 (20deg probe tilt) - 2179	HBBL-600-10000	EX3DV4 - SN7650 / 2023-05-22	DAE4 Sn1741 / 2023-08-23

Scan Setup

	Area Scan	Zoom Scan
Grid Extents [mm]	60.0 x 260.0	24.0 x 24.0 x 22.0
Grid Steps [mm]	10.0 x 10.0	4.0 x 4.0 x 1.4
Sensor Surface [mm]	3.0	1.4
Graded Grid	N/A	Yes
Grading Ratio	N/A	1.4

Measurement Results

	Area Scan	Zoom Scan
psSAR-1g [W/kg]	0.315	0.463
psSAR-10g [W/kg]	0.110	0.115
Power Drift [dB]		-0.01
TSL Correction	Positive only	Positive only
M2 / M1 [%]		52.7
Dist 3dB Peak [mm]		4.7



Test Date : 2024-04-30 | Ambient Temp : 22.7 °C | Tissue Temp : 21.5 °C

Test Mode

8_Bluetooth_GFSK_Bottom_Side_0mm_Ch39_Ant 1

Device Under Test Properties

Manufacturer or Brand	Model No. or Code Name	Sample No. or IMEI	DUT Type
ASUS	HN7306W	A004	Convertible PC

Exposure Conditions

Phantom Section	Band	Group, UID	Frequency [MHz], Channel Number	Conversion Factor	TSL Conductivity [S/m]	TSL Permittivity
Flat	ISM 2.4 GHz Band	Bluetooth, 10032 - CAA	2441.000, 39	8.2	1.80	39.3

Hardware Setup

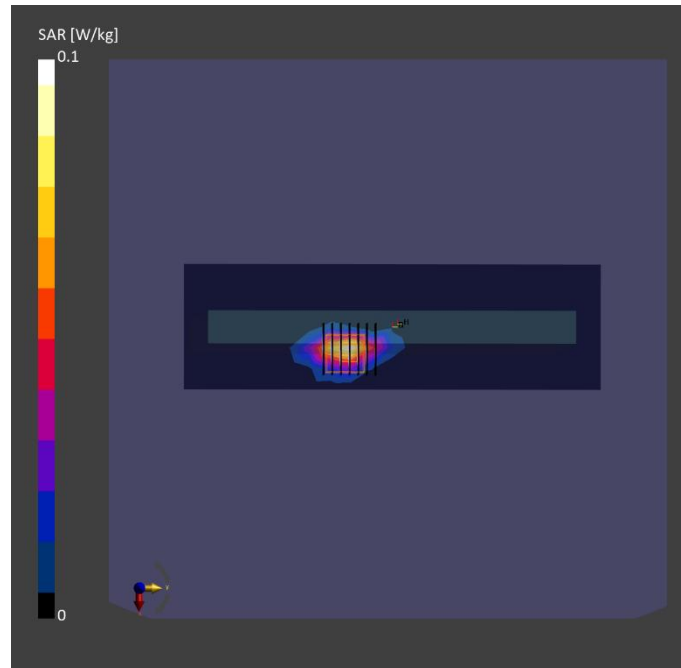
Phantom	Tissue Simulating Liquid	Probe Calibration Date	DAE Calibration Date
ELI V8.0 (20deg probe tilt) - 2179	HBBL-600-10000	EX3DV4 - SN7650 / 2023-05-22	DAE4 Sn1741 / 2023-08-23

Scan Setup

	Area Scan	Zoom Scan
Grid Extents [mm]	72.0 x 240.0	30.0 x 30.0 x 30.0
Grid Steps [mm]	12.0 x 12.0	5.0 x 5.0 x 5.0
Sensor Surface [mm]	3.0	1.4
Graded Grid	N/A	Yes
Grading Ratio	N/A	1.4

Measurement Results

	Area Scan	Zoom Scan
psSAR-1g [W/kg]	0.073	0.078
psSAR-10g [W/kg]	0.031	0.028
Power Drift [dB]		0.02
TSL Correction	Positive only	Positive only
M2 / M1 [%]		31.1
Dist 3dB Peak [mm]		5.2



Test Date : 2024-04-30 | Ambient Temp : 22.7 °C | Tissue Temp : 21.5 °C

Test Mode

9_UNII_5_802.11a_Bottom Side_0mm_Ch93_Ant 0+1

Device Under Test Properties

Manufacturer or Brand	Model No. or Code Name	Sample No. or IMEI	DUT Type
ASUS	HN7306W	A004	Convertible PC

Exposure Conditions

Phantom Section	Band	Group, UID	Frequency [MHz], Channel Number	Conversion Factor	TSL Conductivity [S/m]	TSL Permittivity
Flat	U-NII-5	WLAN, 10683 - AAC	6415.000, 93	5.4	6.00	33.7

Hardware Setup

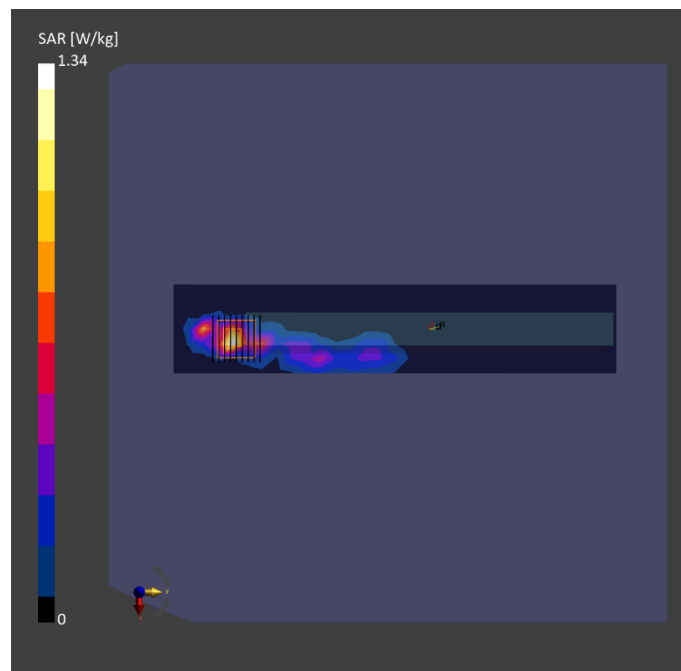
Phantom	Tissue Simulating Liquid	Probe Calibration Date	DAE Calibration Date
ELI V8.0 (20deg probe tilt) - 2179	HBBL-600-10000	EX3DV4 - SN7650 / 2023-05-22	DAE4 Sn1741 / 2023-08-23

Scan Setup

	Area Scan	Zoom Scan
Grid Extents [mm]	51.0 x 255.0	23.8 x 23.8 x 22.0
Grid Steps [mm]	8.5 x 8.5	3.4 x 3.4 x 1.4
Sensor Surface [mm]	3.0	1.4
Graded Grid	N/A	Yes
Grading Ratio	N/A	1.4

Measurement Results

	Area Scan	Zoom Scan
psSAR-1g [W/kg]	0.870	1.05
psSAR-10g [W/kg]	0.242	0.217
psAPD (1.0 cm ² , sq) [W/m ²]		11.6
psAPD (4.0 cm ² , sq) [W/m ²]		6.18
Power Drift [dB]		0.01
TSL Correction	Positive only	Positive only
M2 / M1 [%]		48.9
Dist 3dB Peak [mm]		4.6



Test Date : 2024-05-06 | Ambient Temp : 22.5 °C

Test Mode

10_UNII-5_802.11a_Bottom Side_0mm_Ch93_Ant 0+1

Device Under Test Properties

Manufacturer or Brand	Model No. or Code Name	Sample No. or IMEI	DUT Type
ASUS	HN7306W	A004	Convertible PC

Exposure Conditions

Phantom Section	Band	Group, UID	Frequency [MHz], Channel Number	Conversion Factor
5G	U-NII-5	WLAN, 10062 - CAD	6415.0, 93	1.0

Hardware Setup

Phantom	Medium	Probe Calibration Date	DAE Calibration Date
mmWave - 1102	Air	EUmmWV3 - SN9403_F1-55GHz / 2023-12-05	DAE4 Sn1741 / 2023-08-23

Scan Setup

	5G Scan
Grid Extents [mm]	94.0 x 94.0
Grid Steps [mm]	0.0535 x 0.0535
Sensor Surface [mm]	2.0

Measurement Results

	5G Scan
Avg. Area [cm ²]	4.00
psPD n+ [W/m ²]	4.00
psPD tot+ [W/m ²]	6.77
psPD mod+ [W/m ²]	7.84
E max [V/m]	84.2
Power Drift [dB]	-0.03

