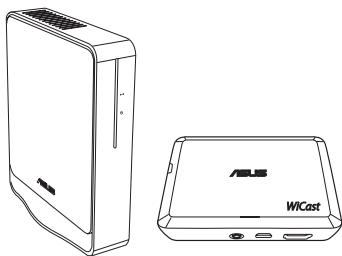




WiCast

Wireless HDMI Kit



EW-2000

User Manual

15G067613000

Copyright © 2010 ASUSTeK Computer Inc. All Rights Reserved.

No part of this manual, including the products and software described in it, may be reproduced, transmitted, transcribed, stored in a retrieval system, or translated into any language in any form or by any means, except documentation kept by the purchaser for backup purposes, without the express written permission of ASUSTeK Computer Inc. ("ASUS").

Product warranty or service will not be extended if: (1) the product is repaired, modified or altered, unless such repair, modification or alteration is authorized in writing by ASUS; or (2) the serial number of the product is defaced or missing.

ASUS PROVIDES THIS MANUAL "AS IS" WITHOUT WARRANTY OF ANY KIND, EITHER EXPRESS OR IMPLIED, INCLUDING BUT NOT LIMITED TO THE IMPLIED WARRANTIES OR CONDITIONS OF MERCHANTABILITY OR FITNESS FOR A PARTICULAR PURPOSE. IN NO EVENT SHALL ASUS, ITS DIRECTORS, OFFICERS, EMPLOYEES OR AGENTS BE LIABLE FOR ANY INDIRECT, SPECIAL, INCIDENTAL, OR CONSEQUENTIAL DAMAGES (INCLUDING DAMAGES FOR LOSS OF PROFITS, LOSS OF BUSINESS, LOSS OF USE OR DATA, INTERRUPTION OF BUSINESS AND THE LIKE), EVEN IF ASUS HAS BEEN ADVISED OF THE POSSIBILITY OF SUCH DAMAGES ARISING FROM ANY DEFECT OR ERROR IN THIS MANUAL OR PRODUCT.

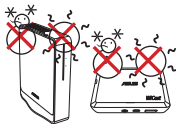
SPECIFICATIONS AND INFORMATION CONTAINED IN THIS MANUAL ARE FURNISHED FOR INFORMATIONAL USE ONLY, AND ARE SUBJECT TO CHANGE AT ANY TIME WITHOUT NOTICE, AND SHOULD NOT BE CONSTRUED AS A COMMITMENT BY ASUS. ASUS ASSUMES NO RESPONSIBILITY OR LIABILITY FOR ANY ERRORS OR INACCURACIES THAT MAY APPEAR IN THIS MANUAL, INCLUDING THE PRODUCTS AND SOFTWARE DESCRIBED IN IT.

Products and corporate names appearing in this manual may or may not be registered trademarks or copyrights of their respective companies, and are used only for identification or explanation and to the owners' benefit, without intent to infringe.

Table of Contents

Safety information	4
EW-2000 Specifications summary.....	5
Getting to know your WiCast Wireless HDMI Kit.....	6
Package contents	6
WiCast receiver features.....	7
WiCast transmitter features	7
Connecting devices.....	8
Connecting your notebook with an external display.....	9
Connecting your desktop PC with an external display	11
Connecting your audio / video devices with an external display.....	13
Adjusting the screen resolution.....	15
Adjusting the screen resolutions on both the notebook and the external display.....	16
Adjusting the screen resolution on the notebook or external display only	17
Using NVIDIA® utility.....	18
Using ATI® utility.....	18
Adjusting the audio.....	19
Windows® 7	19
Troubleshooting	20
Notices	22
ASUS Contact information	25

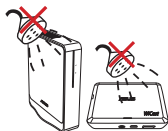
Safety information



SAFE TEMP: The WiCast Wireless HDMI Kit should only be used in environments with ambient temperatures between 5°C (41°F) and 35°C (95°F).



DO NOT expose to dirty or dusty environments.
DO NOT operate during a gas leak.



DO NOT expose to or use near liquids, rain, or moisture.



DO NOT place or drop objects on top and do not shove any foreign objects into the WiCast Wireless HDMI Kit.



DO NOT expose to strong magnetic or electrical fields.



DO NOT throw the WiCast Wireless HDMI Kit in municipal waste. Check local regulations for disposal of electronic products.

EW-2000 Specifications summary

Video	Up to 1080p 60Hz, <1 ms latency
Audio	Up to 8 channels
Wireless HDMI technology	WHDI
Transmission distance	Up to 10 meters
Operation frequency	5.15 ~ 5.85 GHz
Data rate	3G bps
Power supply	Transmitter: 5V, 2A 10W adapter (if USB power is not available) Receiver: 5V, 2A 10W adapter
Power consumption	Transmitter: 4.75W (powered by USB) Receiver: 10W
I/O ports	Transmitter: <ul style="list-style-type: none">- HDMI port x 1- mini-USB x 1- DC-In port x 1 Receiver: <ul style="list-style-type: none">- HDMI port x 1- DC-In port x 1
Weight	Transmitter: 110g Receiver: 160g
Dimensions	Transmitter: 103 x 68 x 28.65 mm (L x W x H) Receiver: 105 x 25 x 125 mm (L x W x H)

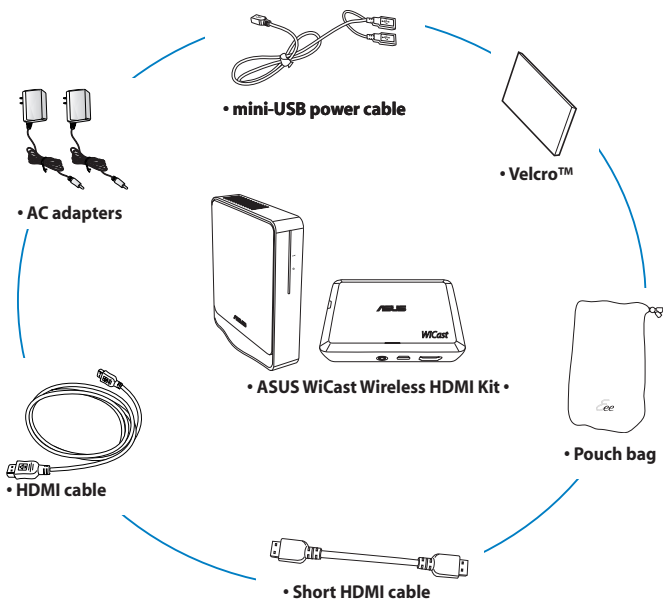


NOTE: Specifications are subject to change without prior notice.

Getting to know your WiCast Wireless HDMI Kit

ASUS WiCast EW2000 allows you to wirelessly extend audio/video sources between high-definition multimedia devices up to a ten-meter radius for a latency-free (<1ms) full HD 1080p video and crystal-clear audio transmissions. Its WHDI™ (Wireless Home Digital Interface) technology transmissions are not limited by directionality or line of sight.

Package contents*

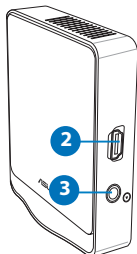
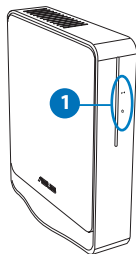




* If any of the above items is damaged or missing, contact your retailer.

WiCast receiver features

Front view

Rear view

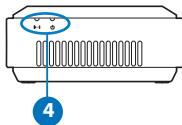
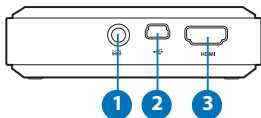




1	LED indicators  WHDI LED  Power LED
2	HDMI port
3	DC-In port

WiCast transmitter features

Rear view

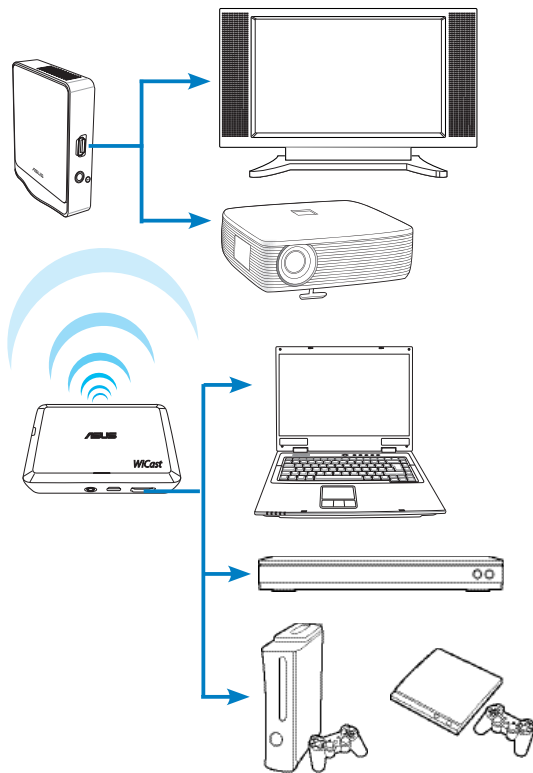
Right-side view



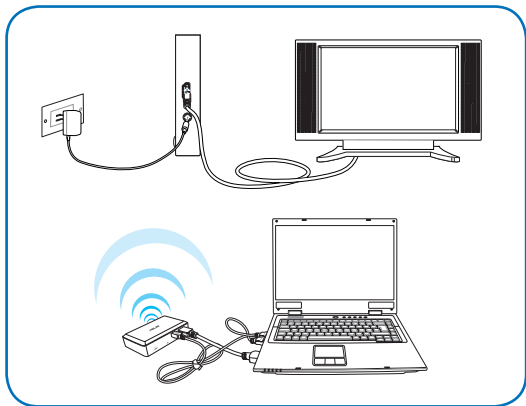
1	DC-In port	3	HDMI port
2	mini-USB port	4	LED indicators  WHDI LED  Power LED

Connecting devices

Use your ASUS WiCast Wireless HDMI Kit to wirelessly extend audio/video sources between high-definition multimedia devices such as Blu-ray disk drives, digital audio devices, computer monitor, set-top box, Xbox, PS3, and HDTV/HD display.



Connecting your notebook with an external display



To connect your notebook with an external display:

1. Using the bundled HDMI cable, connect the WiCast receiver to a high-definition external display such as an HDTV or LCD projector.
2. Insert the bundled AC adapter into the receiver's DC-In port, and plug it into a power outlet.
3. Using the bundled short HDMI cable, connect the WiCast transmitter to your notebook.



NOTE: In some locations except USA, Canada, Hong kong, and Singapore, you need to wait for about a minute before the WiCast receiver can establish a solid connection when you are using it for the first time.



NOTES:

- To charge the WiCast transmitter, use either the bundled mini-USB power cable or the AC adapter.
 - The two bundled AC adapters have identical power ratings and can be used interchangeably.
 - You may purchase a longer HDMI cable for your transmitter, if required.
-

4. After seeing a slow blinking LED signal and if you are using an ASUS notebook, press the <Fn> + <F8> keys to toggle between the external display and your notebook.
5. When your notebook and the external display are successfully connected, the LED signal displays solid white.



NOTE: If you are using a different notebook, refer to your notebook's documentation for the correct function/hot keys to toggle between two displays.

6. When you toggle between your notebook and the external display, the video and audio outputs should switch simultaneously. If you cannot hear any audio after the display change, adjust the volume on your notebook and on the external display .



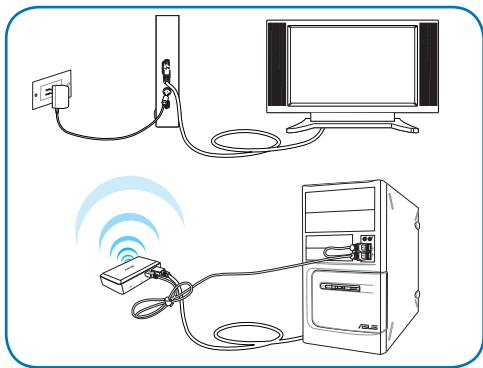
NOTE: For more details, refer to the section **Adjusting the audio** on page 18 of this user manual.

7. Adjust the screen resolution.



NOTE: For more details, refer to the section **Adjusting the screen resolution** on pages 14-18 of this user manual.

Connecting your desktop PC with an external display



To connect your desktop PC with an external display:

1. Using the bundled HDMI cable, connect the WiCast receiver to a high-definition external display such as an HDTV or LCD projector.
2. Insert the bundled AC adapter into the receiver's DC-In port, and plug it into a power outlet.
3. Using the bundled short HDMI cable, connect the WiCast transmitter to your desktop PC



NOTE: In some locations except USA, Canada, Hong kong, and Singapore, you need to wait for about a minute before the WiCast receiver can establish a solid connection when you are using it for the first time.

**NOTES:**

- To charge the WiCast transmitter, use either the bundled mini-USB power cable or the AC adapter.
 - The two bundled AC adapters have identical power ratings and can be used interchangeably.
 - You may purchase a longer HDMI cable for your transmitter, if required.
-

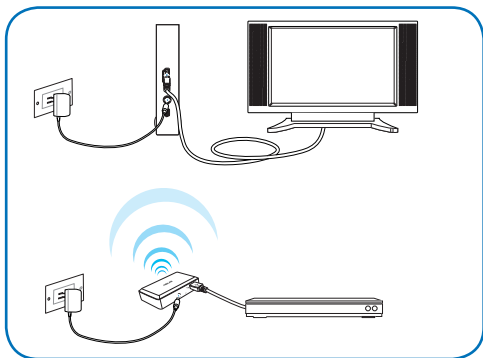
4. When your external display and your desktop PC are successfully connected, the LED signal displays solid white.
5. If you cannot hear any audio, click the audio/speaker icon on your Windows® taskbar and make the necessary adjustments.



NOTE: For more details, refer to the section **Adjusting the audio** on page 18 of this user manual.

Connecting your audio / video devices with an external display

Use your ASUS WiCast Wireless HDMI Kit to wirelessly extend audio/video sources between high-definition multimedia devices such as Blu-ray disk player, audio/video receiver, set top box, PS3, or Xbox.



To connect your audio/video devices with an external display:

1. Using the bundled HDMI cable, connect the WiCast receiver to your external display.
2. Insert the bundled AC adapter into the receiver's DC-In port, and plug it into a power outlet.
3. Using the bundled short HDMI cable, connect the WiCast transmitter to the audio/video device.
4. Insert the bundled AC adapter into the transmitter's DC-in port, and plug it into a power outlet.



NOTES:

- In some locations except USA, Canada, Hong kong, and Singapore, you need to wait for about a minute before the WiCast receiver can establish a solid connection when you are using it for the first time.
 - To charge the WiCast transmitter, use either the bundled mini-USB power cable or the AC adapter.
 - The two bundled AC adapters have identical power ratings and can be used interchangeably.
 - You may purchase a longer HDMI cable for your transmitter, if required.
-

5. When your external display and the audio/video device are successfully connected, the LED signal displays solid white.

Adjusting the screen resolution



NOTES: You may use any of the following modes to wireless extend the display/video output:

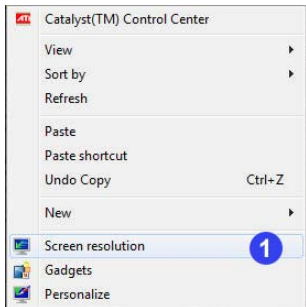
- **Show on the notebook only.**
 - **Show on the external display only.**
 - **Show on both the notebook and the external display.**
 - If both the notebook and the external display supports up to 1080p resolution, then you can enjoy a smoother video output with the 1080p screen resolution.
 - If the notebook and the external display support varied maximum screen formats, the secondary monitor follows the primary monitor's screen resolution.
 - If you want to manually adjust the maximum screen resolution, refer to the steps provided in this section.
-

Adjusting the screen resolutions on both the notebook and the external display

Using Windows® utility

To use Windows® utility:

1. Right-click anywhere on Windows desktop and click **Screen resolution**.



2. From the **Resolution** dropdown list, select your preferred screen resolution.
3. Click **Apply**.
4. Click **Keep Change** on the confirmation message **Do you want to keep these display settings?**
5. Click **OK** when done.

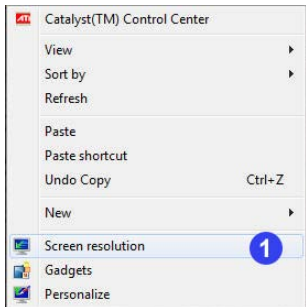


Adjusting the screen resolution on the notebook or external display only

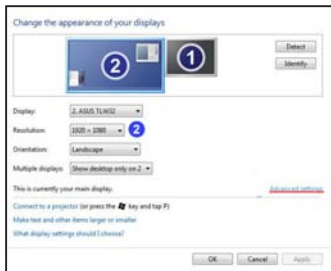
Using Windows® utility

To use Windows® utility:

1. Right-click anywhere on Windows desktop and click **Screen resolution**.



2. From the **Resolution** dropdown list, select your preferred screen resolution.
3. From the **Multiple displays** dropdown list, select either **Show desktop only on 1** or **Show desktop only on 2**.



4. Click **Apply**.
5. Click **Keep Change** on the confirmation message **Do you want to keep these display settings?**, then click **OK**.

- From the Generic PnP Monitor and Intel® Graphics Media Accelerator HD screen, click **Monitor** and select 60 Hz as the screen refresh rate.
- Click **OK** when done.

Using NVIDIA® utility

To use NVIDIA® utility:

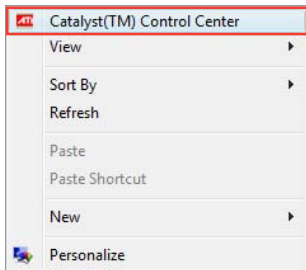
- Launch the NVIDIA Control Panel. Select **Video &Television**.
- Select **Change the signal or HD format**
- Select **1080p HDTV** signal format.



Using ATI® utility

To use ATI® utility:

- Right-click on the Windows® desktop and select **Catalyst(TM) Control Center**. You can also right-click the ATI icon in the Windows notification area and select **Catalyst Control Center**.



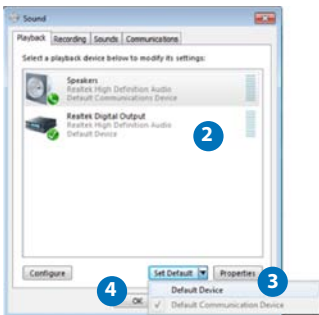
2. Select the monitor whose screen resolution you want to adjust.
3. Select **Extended Mode** as the monitor's desktop mode.
4. Click **Yes** on the confirmation message.
5. From the **Desktop area** dropdown list, select your preferred screen resolution.
6. From the **Refresh rate** dropdown list, select your preferred rate.
7. When done, click **Apply**.
8. Click **Yes** on the confirmation message.

Adjusting the audio

Windows® 7

To adjust the audio on Windows® 7:

1. From the Windows® taskbar click  > **Control Panel** > **Hardware and Sound** > **Sound**.
2. From the **Playback** tab of the **Sound** dialog screen, select the playback device whose settings you want to modify.
4. From the **Set Default** dropdown list, select **Default Device**.
5. Click **OK** when done.



Troubleshooting



NOTE: If the troubleshooting tips below still cannot solve your wireless connection issue, do the following:

- Try connecting your source device directly with the external display using an HDMI cable. If there is still no wireless connection, the problem might be with the source device or the external display.
 - Turn your source device and the external display on/off to ensure that the problem is not with these devices.
 - Refer to your source device's or external display's user manual.
-

The wireless connection failed.

- Check the distance between the WiCast receiver and the WiCast transmitter. The WiCast Wireless HDMI Kit can wirelessly extend audio/video sources up to a ten-meter radius, depending on the environment.
- Ensure that there are no obstacles such as metal or thick concrete walls between the WiCast receiver and the WiCast transmitter.
- Unplug then reconnect the power cables of the WiCast receiver and the WiCast transmitter.

There is no display output from the computer to the external display.

- Ensure that the LED indicators on both the WiCast transmitter and the WiCast receiver are solidly lit up.
- Press the <Fn> + <F8> keys on your computer to toggle the display content from the computer to the external display.
- If your computer is not an ASUS computer, check your computer's user manual for the correct function keys to toggle between external displays.

The screen flickers when the external display is set to 1920 x 1080 dpi at 30Hz frequency.

- Check your notebook/PC, external display, or audio/video devices' settings.
- Use a longer HDMI cable (instead of the bundled short HDMI cable) to connect the WiCast transmitter to your notebook/PC.

There are no display outputs on the external displays.

- Check that all cables are connected properly.
- Ensure that the LED indicators on both the WiCast transmitter and the WiCast receiver are solidly lit up.
- Check the distance between your WiCast transmitter and WiCast receiver. Depending on your environment, the maximum distance for WHDI transmissions is within a ten meter radius.
- Unplug your WiCast transmitter's and WiCast receiver's AC adapters and then plug them in again.

Video output does not entirely fit or is outside the external display's screen.

- Change either your external display's or your notebook's/PC's screen resolution.
- If the video output is stretched outside the screen, check your display's video settings. Some newer high-definition external displays/TV models have correction options. Refer to your external display's user manual for this feature.

Notices

REACH

Complying with the REACH (Registration, Evaluation, Authorisation, and Restriction of Chemicals) regulatory framework, we published the chemical substances in our products at ASUS REACH website at <http://green.asus.com/english/REACH.htm>.

Federal Communications Commission Interference Statement

This device complies with FCC Rules Part 15. Operation is subject to the following two conditions:

- This device may not cause harmful interference.
- This device must accept any interference received, including interference that may cause undesired operation.

This equipment has been tested and found to comply with the limits for a class B digital device, pursuant to Part 15 of the Federal Communications Commission (FCC) rules. These limits are designed to provide reasonable protection against harmful interference in a residential installation. This equipment generates, uses, and can radiate radio frequency energy and, if not installed and used in accordance with the instructions, may cause harmful interference to radio communications. However, there is no guarantee that interference will not occur in a particular installation. If this equipment does cause harmful interference to radio or television reception, which can be determined by turning the equipment off and on, the user is encouraged to try to correct the interference by one or more of the following measures:

- Reorient or relocate the receiving antenna.
- Increase the separation between the equipment and receiver.

- Connect the equipment into an outlet on a circuit different from that to which the receiver is connected.
- Consult the dealer or an experienced radio/TV technician for help.



CAUTION: Any changes or modifications not expressly approved by the party responsible for compliance could void the user's authority to operate the equipment.

FCC Radiation Exposure Statement

This equipment complies with FCC radiation exposure limits set forth for an uncontrolled environment. This equipment should be installed and operated with minimum distance 20cm between the radiator & your body.

This transmitter must not be co-located or operating in conjunction with any other antenna or transmitter. 2.4GHz operation of this product in the U.S.A. is firmware-limited to channels 1 through 11.

RF Exposure warning

- The equipment complies with FCC RF exposure limits set forth for an uncontrolled environment.
- The equipment must be co-located or operated in conjunction with any other antenna or transmitter.

CE Mark Warning

This is a Class B product, in a domestic environment, this product may cause radio interference, in which case the user may be required to take adequate measures.

IC Radiation Exposure Statement for Canada

This equipment complies with IC radiation exposure limits set forth for an uncontrolled environment. To maintain compliance with IC RF exposure compliance requirements, please avoid direct contact to the transmitting antenna during transmitting. End users must follow the specific operating instructions for satisfying RF exposure compliance.

Operation is subject to the following two conditions:

- This device may not cause interference.
- This device must accept any interference, including interference that may cause undesired operation of the device.

This device should be used only as specified within this manual to meet RF exposure requirements. Using this device in a manner inconsistent with this manual could lead to excessive RF exposure conditions.

This device and its antenna(s) must not be co-located or operating in conjunction with any other antenna or transmitter.

Country Code selection feature to be disabled for products marketed to the US/CANADA.

This Class [B] digital apparatus complies with Canadian ICES-003.
Cet appareil numérique de la classe [B] est conforme à la norme NMB-003 du Canada

DGT 警語

經型式認證合格之低功率射頻電機，非經許可，公司、商號或使用者均不得擅自變更頻率、

加大功率或變更原設計之特性及功能。

低功率射頻電機之使用不得影響飛航安全及干擾合法通信；經發現有干擾現象時，應立即

停用，並改善至無干擾時方得繼續使用。

前項合法通信，指依電信法規定作業之無線電通信。

低功率射頻電機須忍受合法通信或工業、科學及醫療用電波輻射性電機設備之干擾。

ASUS Contact information

ASUSTeK COMPUTER INC. (Asia Pacific)

Address	15 Li-Te Road, Peitou, Taipei, Taiwan 11259
Telephone	+886-2-2894-3447
Fax	+886-2-2890-7798
Website	www.asus.com.tw

Technical Support

Telephone	+86-21-3842-9911
Online support	support.asus.com

ASUS COMPUTER INTERNATIONAL (America)

Address	800 Corporate Way, Fremont, CA 94539, USA
Telephone	+1-510-739-3777
Fax	+1-510-608-4555
Website	usa.asus.com

Technical Support

Telephone	+1-812-282-2787
Support fax	+1-812-284-0883
Online support	support.asus.com

ASUS COMPUTER GmbH (Germany and Austria)

Address	Harkort Str. 21-23, D-40880 Ratingen, Germany
Fax	+49-2102-9599-11
Online contact	www.asus.com.de/sales

Technical Support

Telephone (Component)	+49-1805-010923*
Telephone (System/ Notebook/Eee/LCD)	+49-1805-010920*
Support fax	+49-2102-959911
Online support	www.asus.com.de/support
Website	www.asus.com.de/news

* EUR 0.14/minute from a German fixed landline; EUR 0.42/minute from a mobile phone.

Manufacturer:	ASUSTeK Computer Inc. Tel: +886-2-2894-3447 Address: No. 150, LI-TE RD., PEITOU, TAIPEI 112, TAIWAN
Authorised representative in Europe:	ASUS Computer GmbH Address: HARKORT STR. 21-23, 40880 RATINGEN, GERMANY