

SAR Measurement Data

ALSAS-10U VER 2.3.2APREL Laboratories

SAR Test Report (802.11b)

Report Date : 29-Nov-2006
Measurement Date : 29-Nov-2006

Product Data

Device Name : ASUS
Type : Std Form Cell Phone
Model : AiGuru S2
Frequency : 2450.00 MHz
Max. Transmit Pwr : 0 W
Drift Time : 0 min(s)
Length : 116.1 mm
Width : 47 mm
Depth : 14.4 mm
Antenna Type : Internal

Phantom Data

Type : Uni-Phantom
Size (mm) : 280 x 280 x 200
Location : Center

Tissue Data

Type : BODY
Serial No. : 325-B
Frequency : 2450.00 MHz
Last Calib. Date : 29-Nov-2006
Temperature : 21.80 °C
Ambient Temp. : 22.10 °C
Humidity : 54.00 RH%
Epsilon : 51.25 F/m
Sigma : 1.986 S/m
Density : 1000.00 kg/cu. M

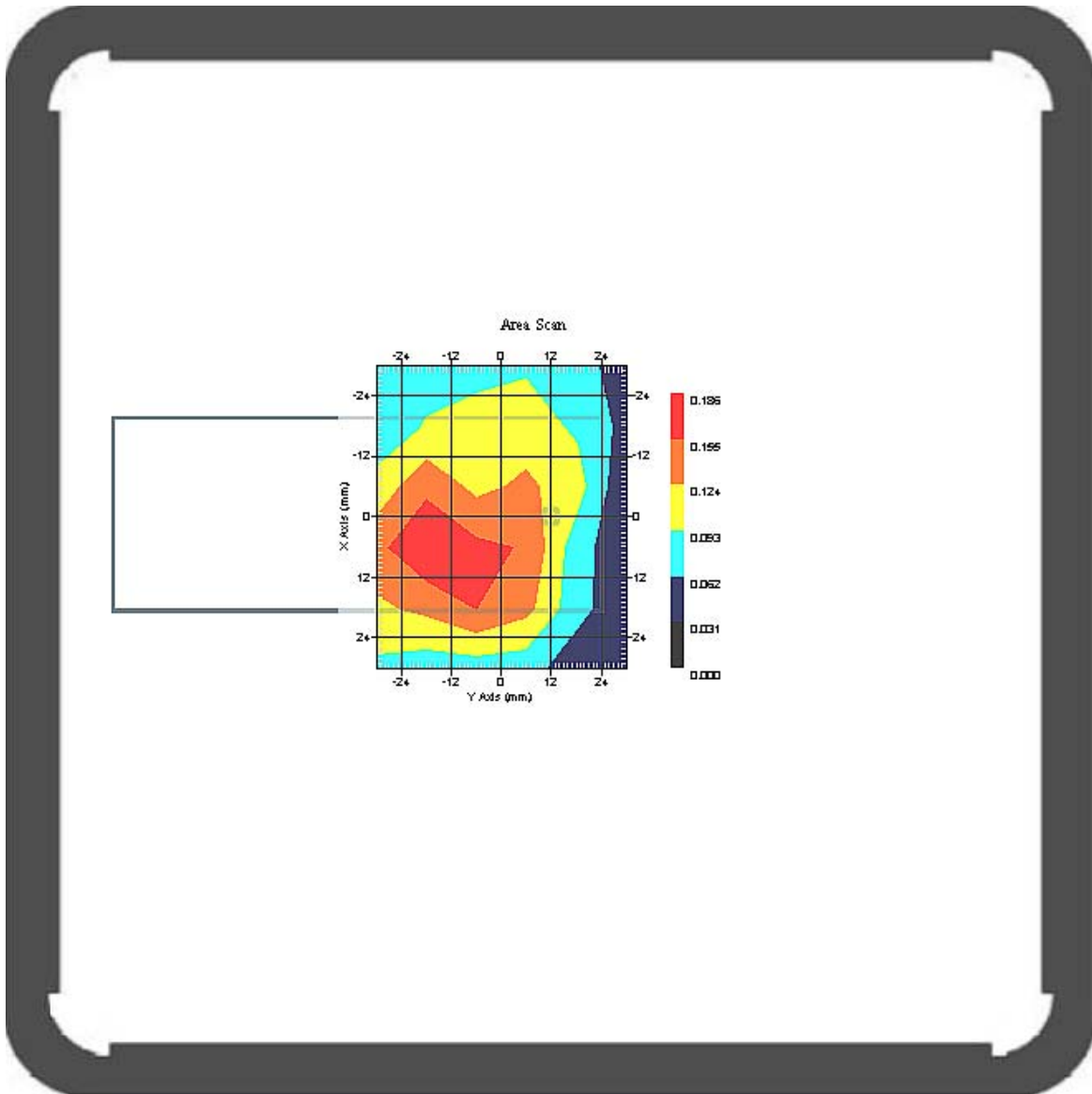
Probe Data

Name : Probe 264
Model : E020
Type : E-Field Triangle
Serial No. : 264
Last Calib. Date : 21-Mar-2006
Frequency : 2450.00 MHz
Duty Cycle Factor: 1
Conversion Factor: 5
Probe Sensitivity: 1.20 1.20 1.20 $\mu\text{V}/(\text{V}/\text{m})^2$
Compression Point: 95.00 mV
Offset : 1.56 mm

Measurement Data

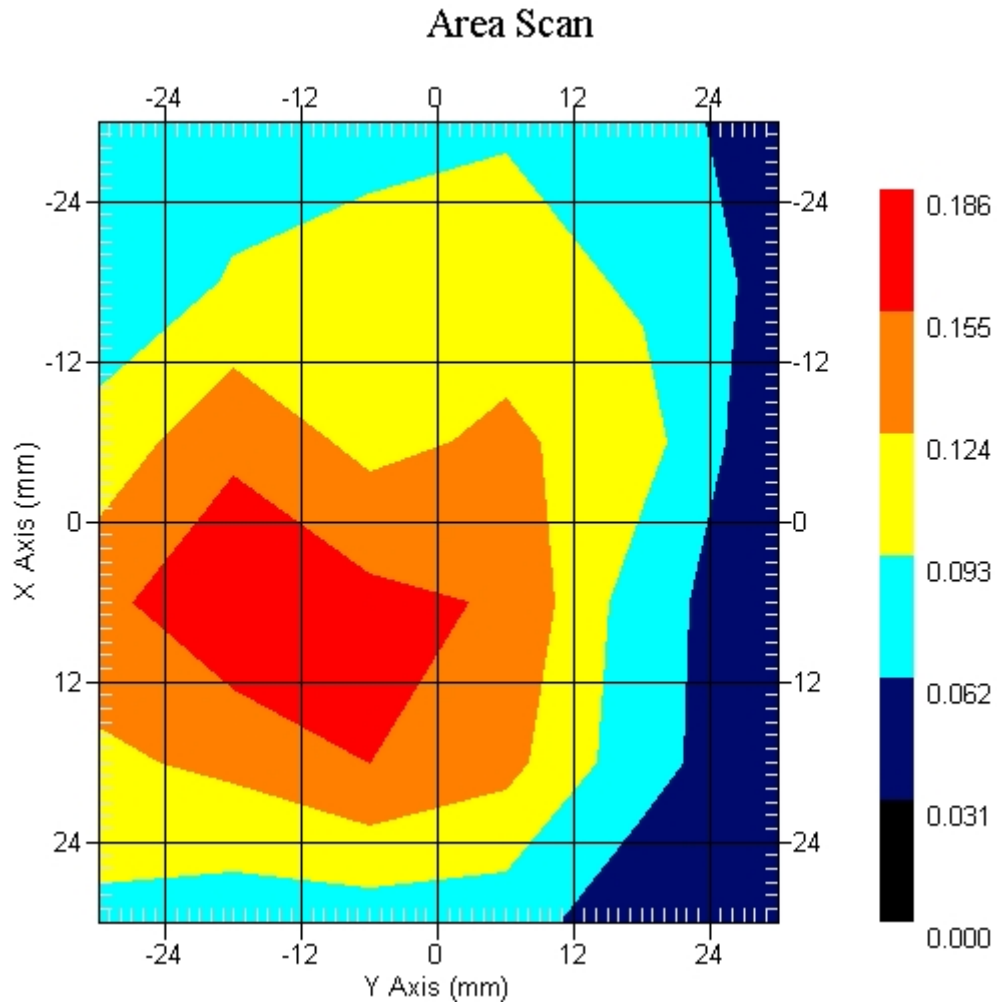
Crest Factor : 1
 Tissue Temp. : 21.80 °C
 Ambient Temp. : 22.10 °C
 Area Scan : 6x6x1 : Measurement x=12mm, y=12mm, z=4mm
 Zoom Scan : 7x7x7 : Measurement x=5mm, y=5mm, z=5mm
 Power Drift-Start : 0.161 W/kg
 Power Drift-Finish: 0.157 W/kg
 Power Drift (%) : -2.475

DUT Position : Rotated Left 90°
 Channel : 1



1 gram SAR value : 0.197 W/kg
 10 gram SAR value : 0.124 W/kg
 Area Scan Peak SAR : 0.184 W/kg
 Zoom Scan Peak SAR : 0.370 W/kg

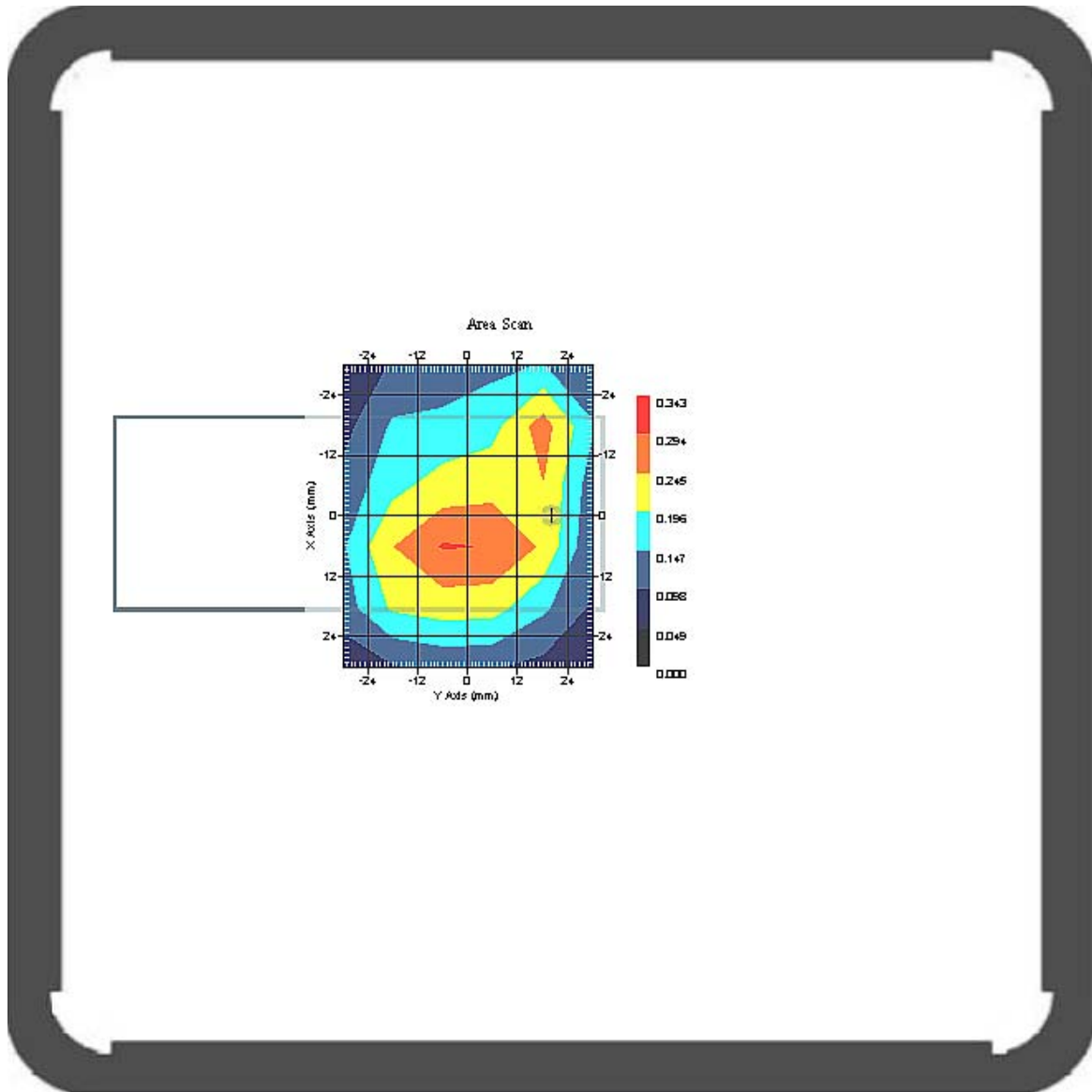
This is previous page plot (zoom in)



Measurement Data

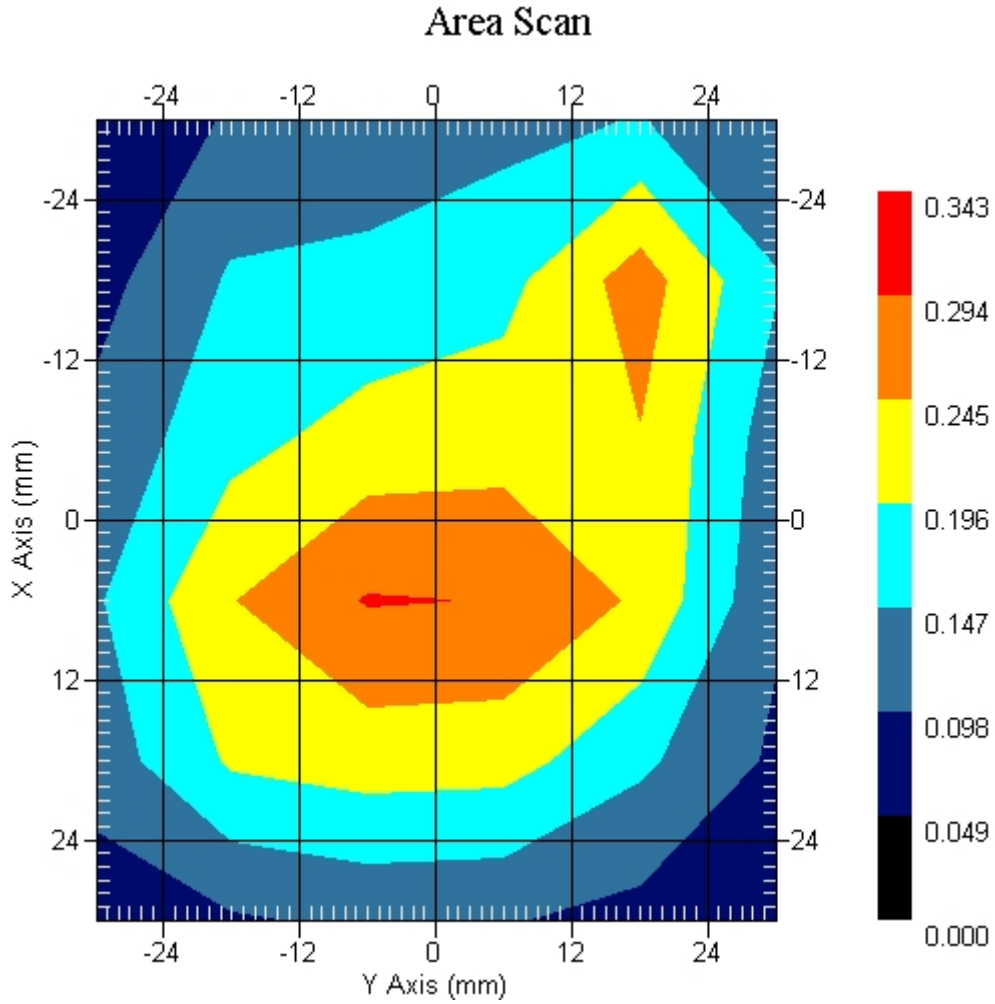
Crest Factor : 1
Tissue Temp. : 21.80 °C
Ambient Temp. : 22.10 °C
Area Scan : 6x6x1 : Measurement x=12mm, y=12mm, z=4mm
Zoom Scan : 7x7x7 : Measurement x=5mm, y=5mm, z=5mm
Power Drift-Start : 0.259 W/kg
Power Drift-Finish: 0.258 W/kg
Power Drift (%) : -0.610

DUT Position : Rotated Left 90°
Channel : 6



1 gram SAR value : 0.293 W/kg
10 gram SAR value : 0.177 W/kg
Area Scan Peak SAR : 0.297 W/kg
Zoom Scan Peak SAR : 0.520 W/kg

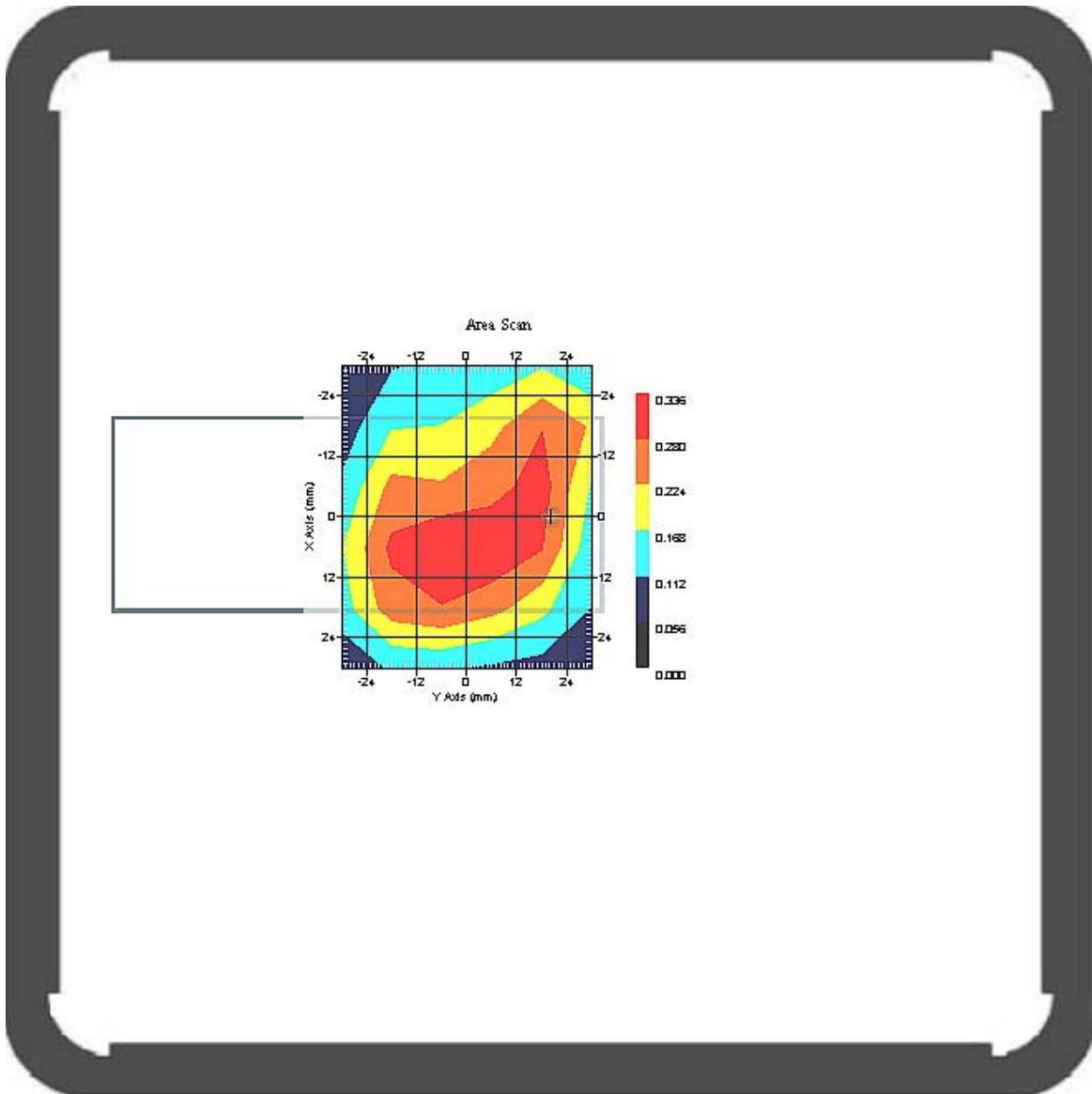
This is previous page plot (zoom in)



Measurement Data

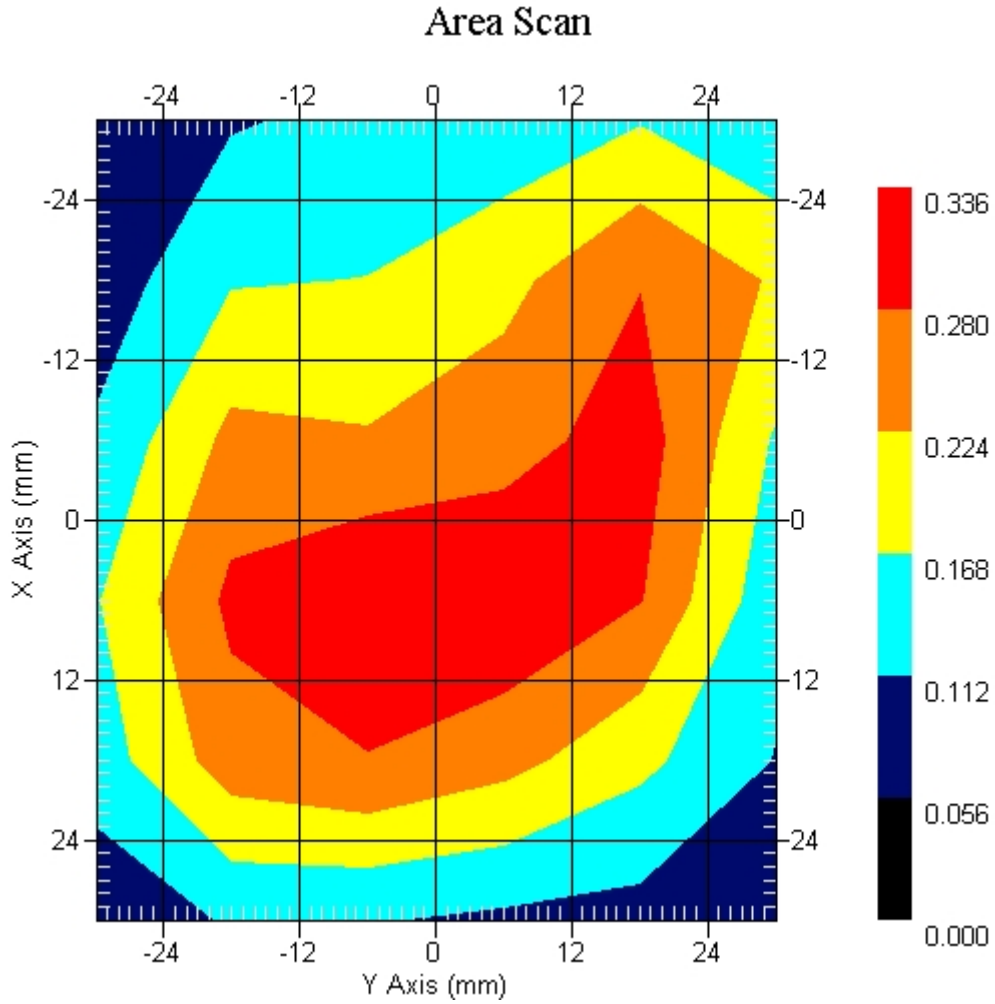
Crest Factor : 1
 Tissue Temp. : 21.80 °C
 Ambient Temp. : 22.10 °C
 Area Scan : 6x6x1 : Measurement x=12mm, y=12mm, z=4mm
 Zoom Scan : 7x7x7 : Measurement x=5mm, y=5mm, z=5mm
 Power Drift-Start : 0.312 W/kg
 Power Drift-Finish: 0.303 W/kg
 Power Drift (%) : -3.090

DUT Position : Rotated Left 90°
 Channel : 11



1 gram SAR value : 0.317 W/kg
 10 gram SAR value : 0.207 W/kg
 Area Scan Peak SAR : 0.336 W/kg
 Zoom Scan Peak SAR : 0.470 W/kg

This is previous page plot (zoom in)



SAR Measurement Data

ALSAS-10U VER 2.3.2APREL Laboratories

SAR Test Report (802.11g)

Report Date : 29-Nov-2006
Measurement Date : 29-Nov-2006

Product Data

Device Name : ASUS
Type : Std Form Cell Phone
Model : AiGuru S2
Frequency : 2450.00 MHz
Max. Transmit Pwr : 0 W
Drift Time : 0 min(s)
Length : 116.1 mm
Width : 47 mm
Depth : 14.4 mm
Antenna Type : Internal

Phantom Data

Type : SAM-Right
Size (mm) : 280 x 280 x 280
Location : Right

Tissue Data

Type : HEAD
Serial No. : 325-H
Frequency : 2450.00 MHz
Last Calib. Date : 29-Nov-2006
Temperature : 21.80 °C
Ambient Temp. : 22.10 °C
Humidity : 54.00 RH%
Epsilon : 38.22 F/m
Sigma : 1.841 S/m
Density : 1000.00 kg/cu. M

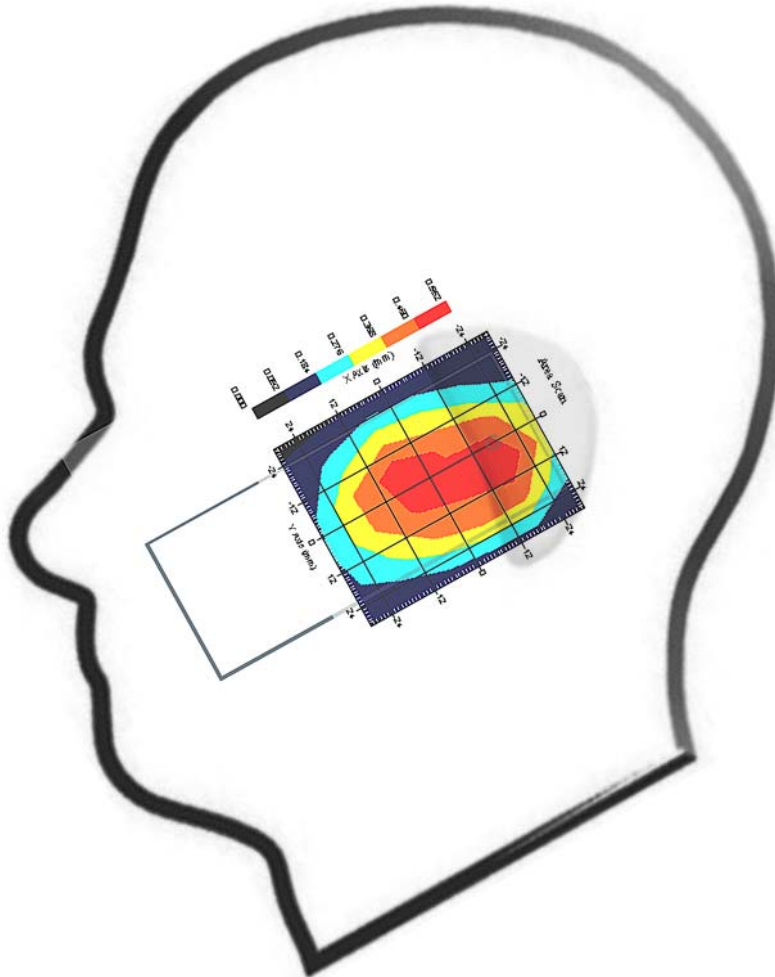
Probe Data

Name : Probe 264
Model : E020
Type : E-Field Triangle
Serial No. : 264
Last Calib. Date : 21-Mar-2006
Frequency : 2450.00 MHz
Duty Cycle Factor: 1
Conversion Factor: 5
Probe Sensitivity: 1.20 1.20 1.20 $\mu\text{V}/(\text{V}/\text{m})^2$
Compression Point: 95.00 mV
Offset : 1.56 mm

Measurement Data

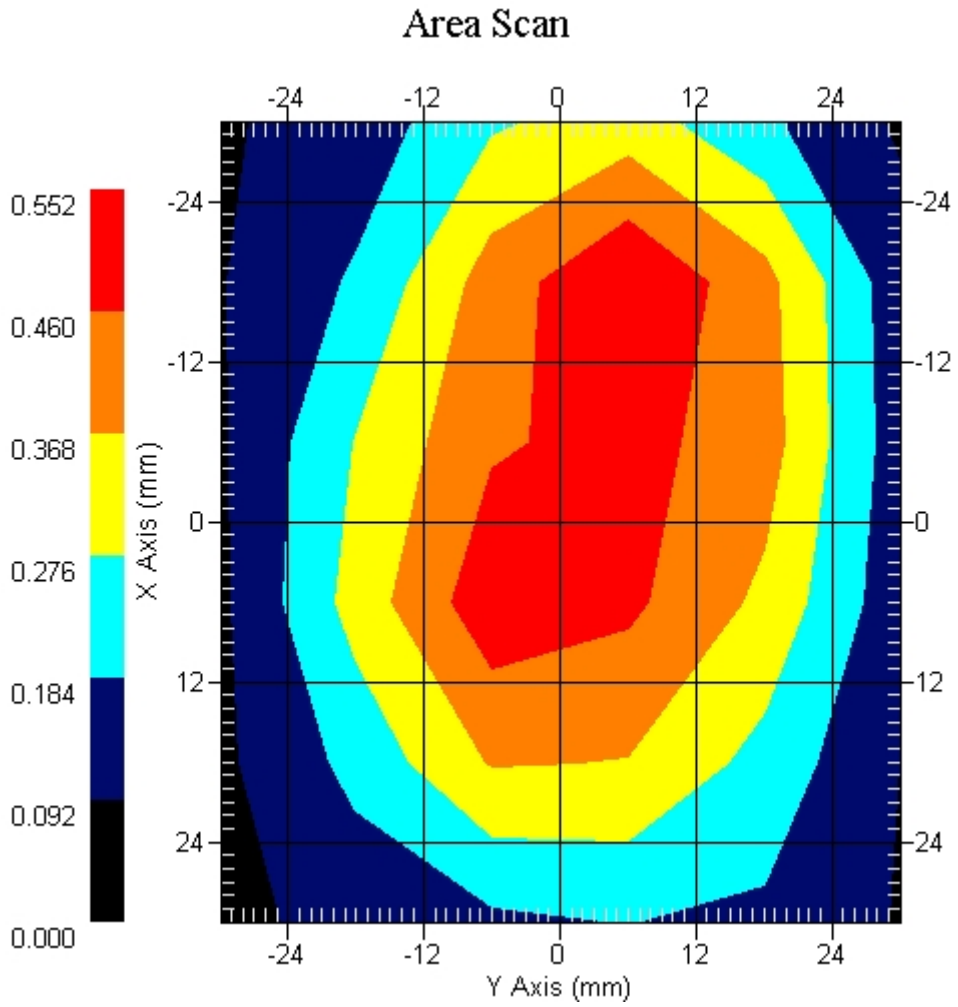
Crest Factor : 1
Tissue Temp. : 21.80 °C
Ambient Temp. : 22.10 °C
Area Scan : 6x6x1 : Measurement x=12mm, y=12mm, z=4mm
Zoom Scan : 7x7x7 : Measurement x=5mm, y=5mm, z=5mm
Power Drift-Start : 0.507 W/kg
Power Drift-Finish: 0.497 W/kg
Power Drift (%) : -1.886

DUT Position : Touch
Channel : 1



1 gram SAR value : 0.511 W/kg
10 gram SAR value : 0.271 W/kg
Area Scan Peak SAR : 0.550 W/kg
Zoom Scan Peak SAR : 0.960 W/kg

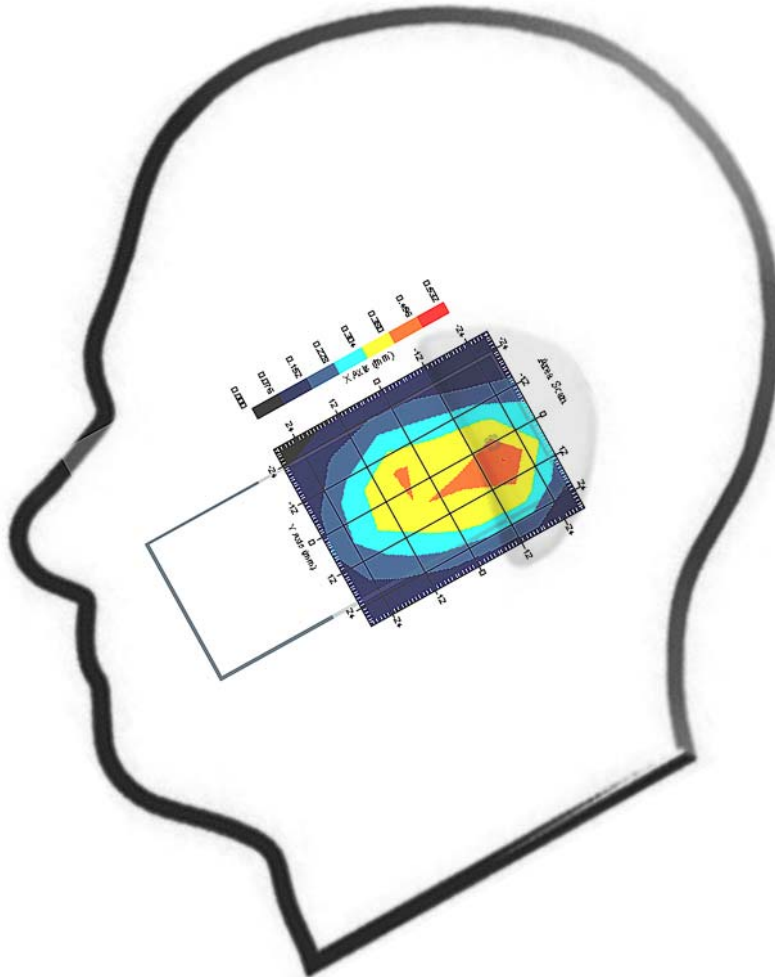
This is previous page plot (zoom in)



Measurement Data

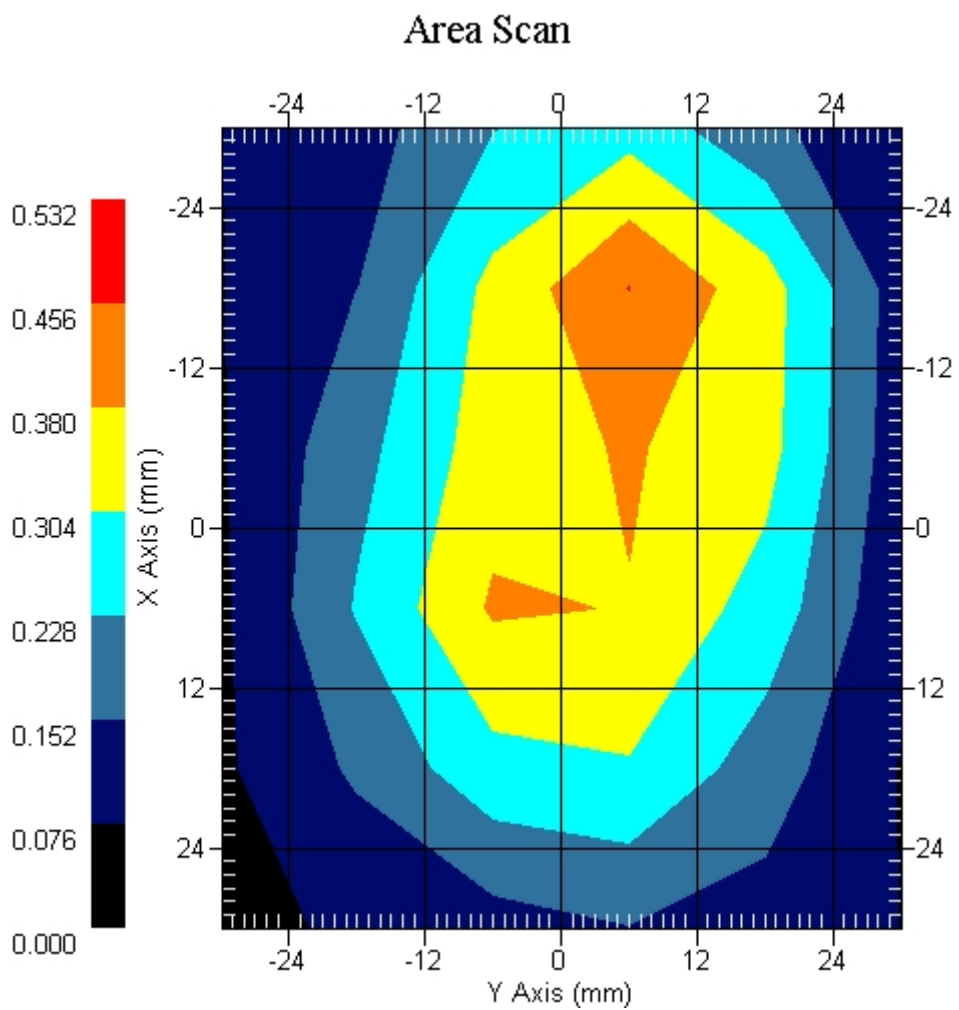
Crest Factor : 1
Tissue Temp. : 21.80 °C
Ambient Temp. : 22.10 °C
Area Scan : 6x6x1 : Measurement x=12mm, y=12mm, z=4mm
Zoom Scan : 7x7x7 : Measurement x=5mm, y=5mm, z=5mm
Power Drift-Start : 0.434 W/kg
Power Drift-Finish: 0.426 W/kg
Power Drift (%) : -1.933

DUT Position : Touch
Channel : 6



1 gram SAR value : 0.380 W/kg
10 gram SAR value : 0.204 W/kg
Area Scan Peak SAR : 0.457 W/kg
Zoom Scan Peak SAR : 0.720 W/kg

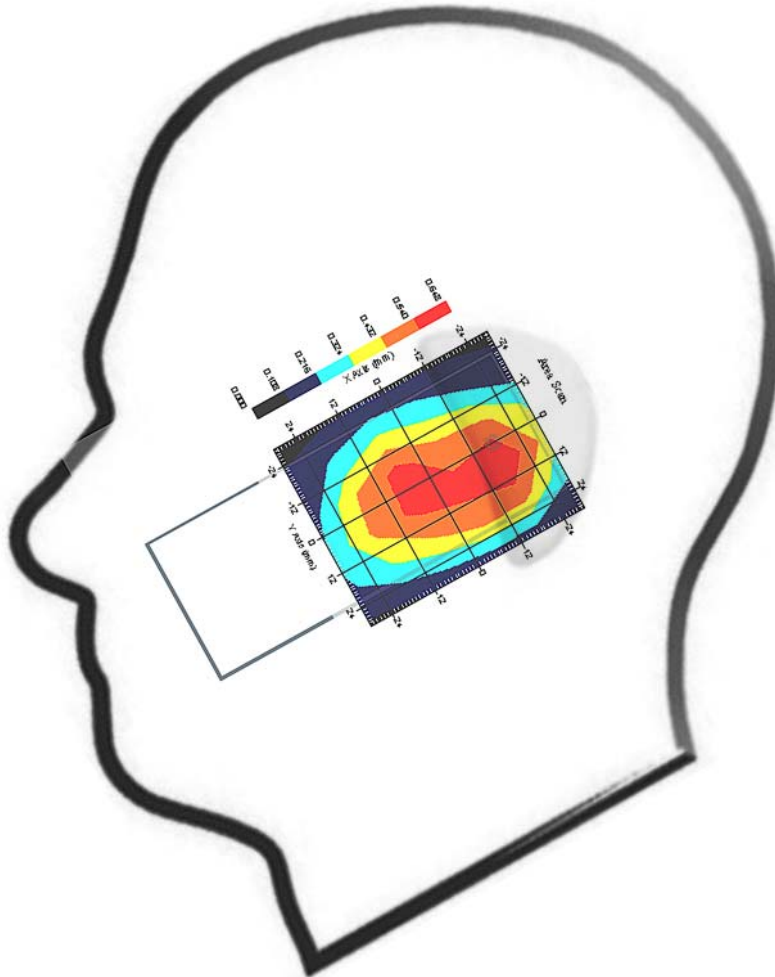
This is previous page plot (zoom in)



Measurement Data

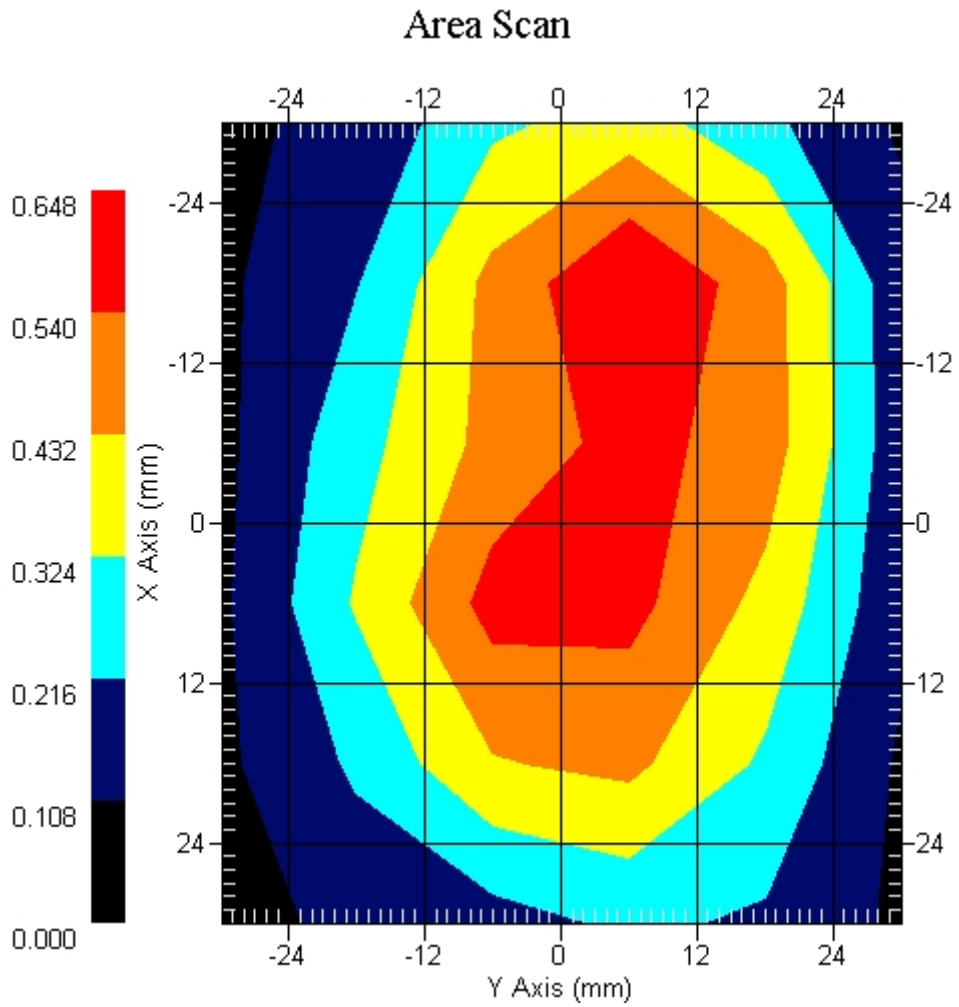
Crest Factor : 1
Tissue Temp. : 21.80 °C
Ambient Temp. : 22.10 °C
Area Scan : 6x6x1 : Measurement x=12mm, y=12mm, z=4mm
Zoom Scan : 7x7x7 : Measurement x=5mm, y=5mm, z=5mm
Power Drift-Start : 0.581 W/kg
Power Drift-Finish: 0.579 W/kg
Power Drift (%) : -0.472

DUT Position : Touch
Channel : 11



1 gram SAR value : 0.612 W/kg
10 gram SAR value : 0.317 W/kg
Area Scan Peak SAR : 0.647 W/kg
Zoom Scan Peak SAR : 1.161 W/kg

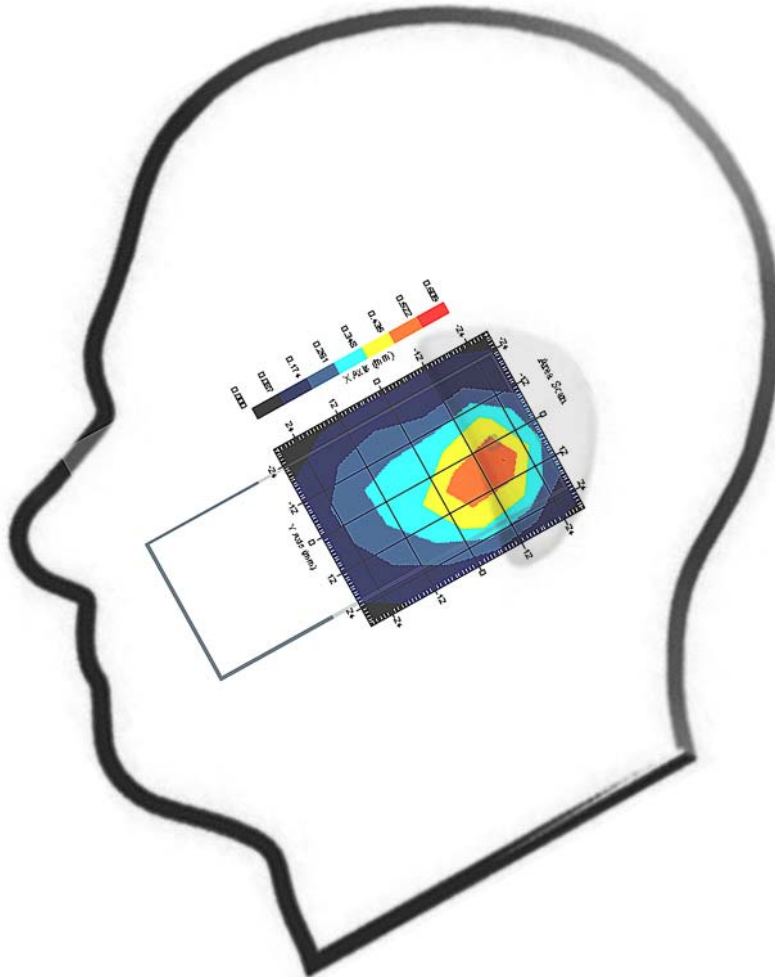
This is previous page plot (zoom in)



Measurement Data

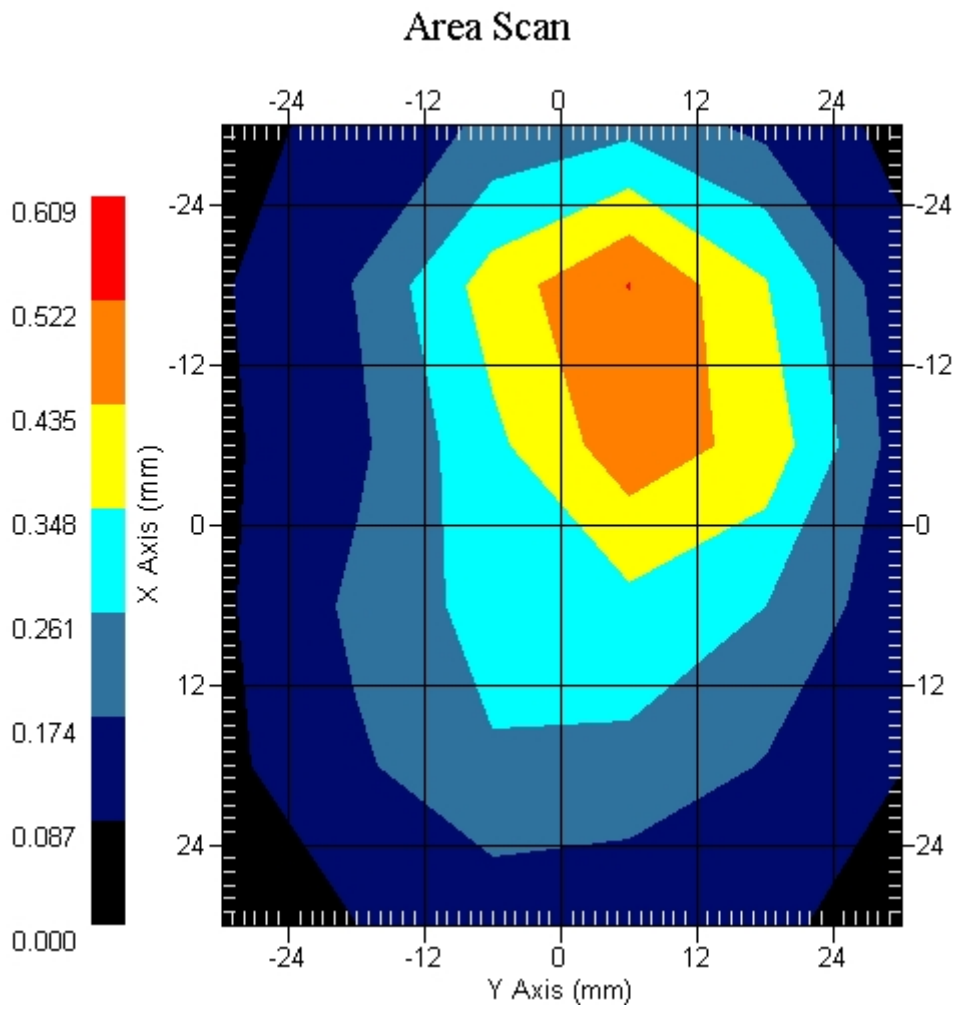
Crest Factor : 1
Tissue Temp. : 21.80 °C
Ambient Temp. : 22.10 °C
Area Scan : 6x6x1 : Measurement x=12mm, y=12mm, z=4mm
Zoom Scan : 7x7x7 : Measurement x=5mm, y=5mm, z=5mm
Power Drift-Start : 0.481 W/kg
Power Drift-Finish: 0.480 W/kg
Power Drift (%) : -0.233

DUT Position : 15° Tilt
Channel : 1



1 gram SAR value : 0.513 W/kg
10 gram SAR value : 0.260 W/kg
Area Scan Peak SAR : 0.523 W/kg
Zoom Scan Peak SAR : 0.960 W/kg

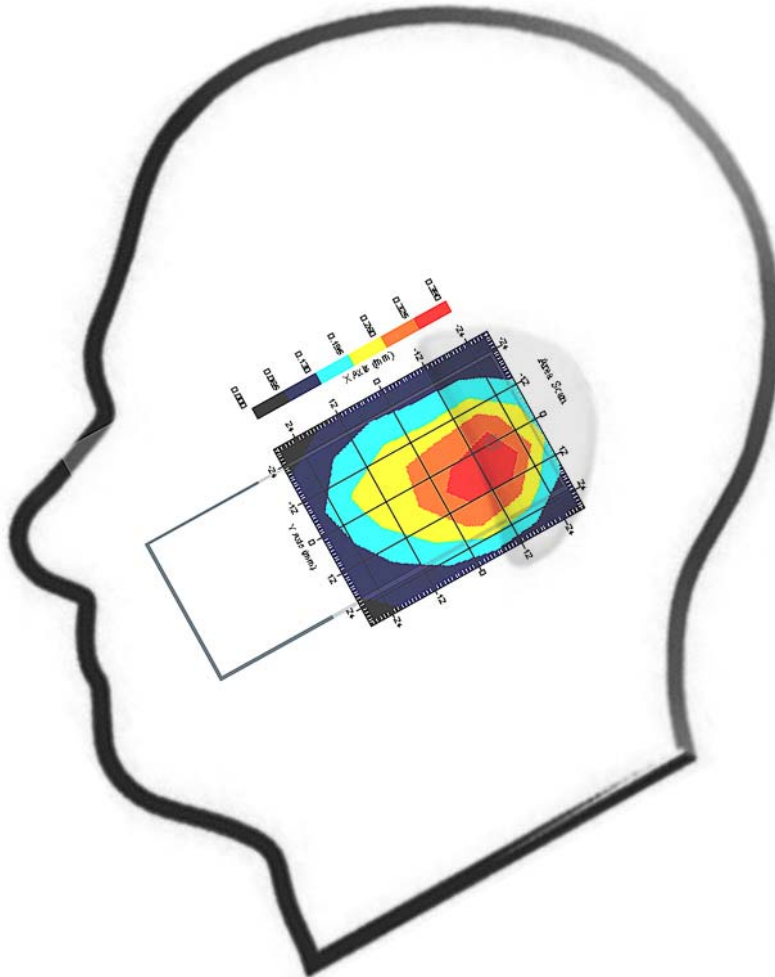
This is previous page plot (zoom in)



Measurement Data

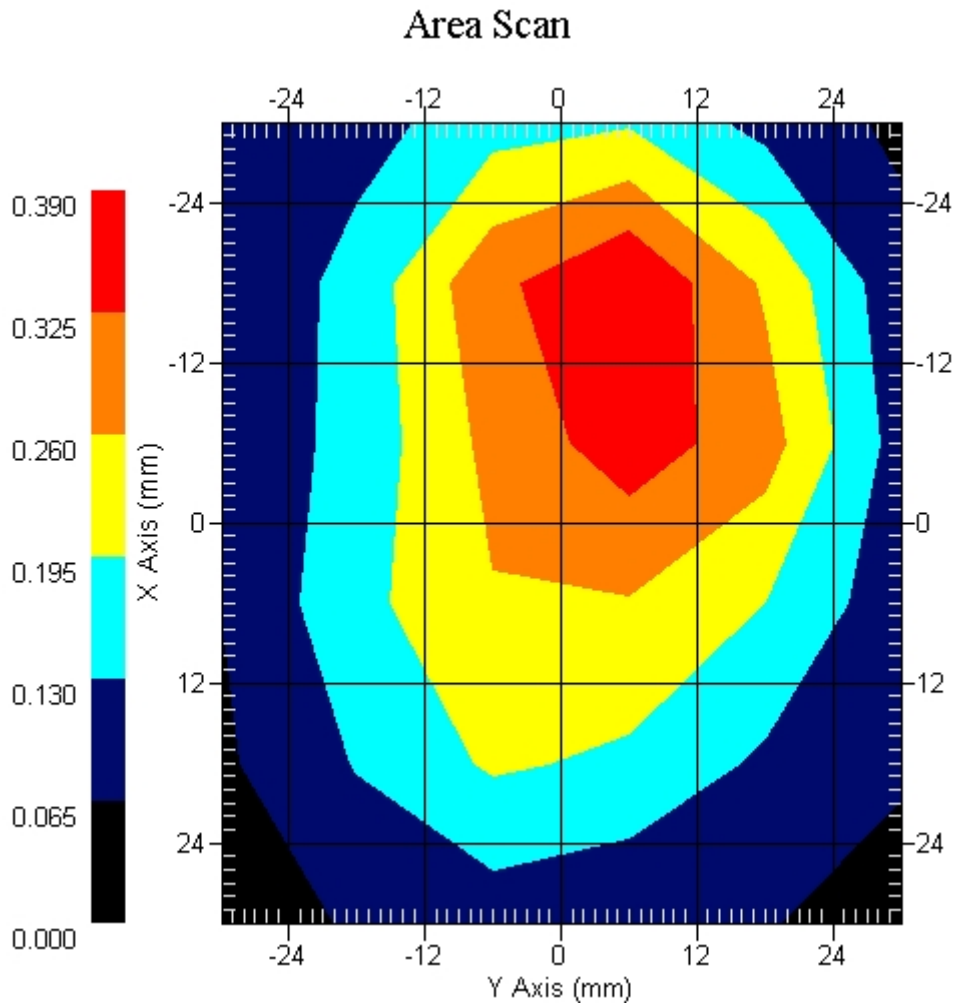
Crest Factor : 1
Tissue Temp. : 21.80 °C
Ambient Temp. : 22.10 °C
Area Scan : 6x6x1 : Measurement x=12mm, y=12mm, z=4mm
Zoom Scan : 7x7x7 : Measurement x=5mm, y=5mm, z=5mm
Power Drift-Start : 0.398 W/kg
Power Drift-Finish: 0.350 W/kg
Power Drift (%) : -11.981

DUT Position : 15° Tilt
Channel : 6



1 gram SAR value : 0.357 W/kg
10 gram SAR value : 0.189 W/kg
Area Scan Peak SAR : 0.390 W/kg
Zoom Scan Peak SAR : 0.660 W/kg

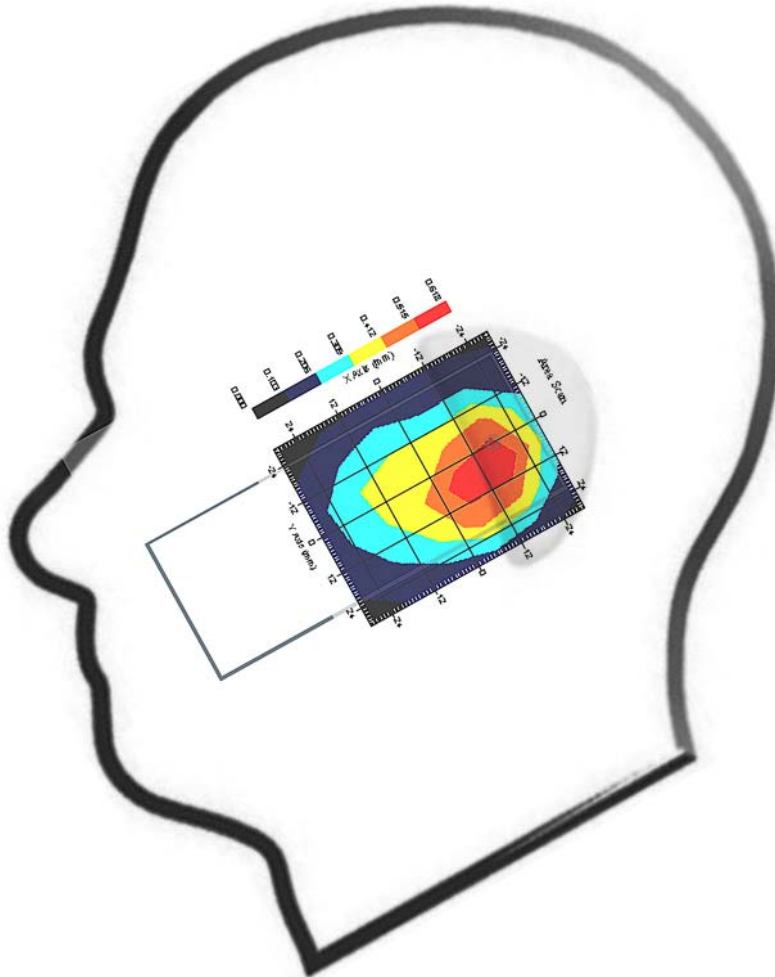
This is previous page plot (zoom in)



Measurement Data

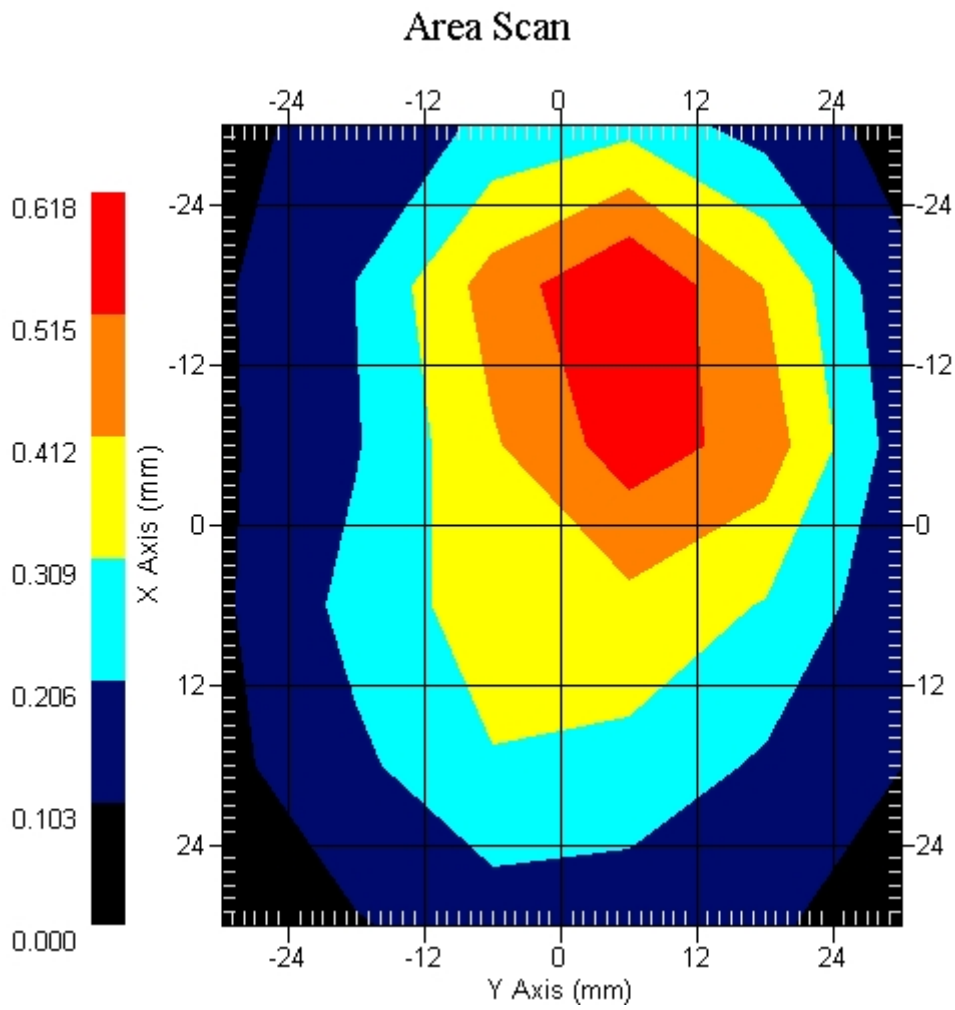
Crest Factor : 1
Tissue Temp. : 21.80 °C
Ambient Temp. : 22.10 °C
Area Scan : 6x6x1 : Measurement x=12mm, y=12mm, z=4mm
Zoom Scan : 7x7x7 : Measurement x=5mm, y=5mm, z=5mm
Power Drift-Start : 0.566 W/kg
Power Drift-Finish: 0.579 W/kg
Power Drift (%) : 2.296

DUT Position : 15° Tilt
Channel : 11



1 gram SAR value : 0.608 W/kg
10 gram SAR value : 0.309 W/kg
Area Scan Peak SAR : 0.617 W/kg
Zoom Scan Peak SAR : 1.140 W/kg

This is previous page plot (zoom in)



SAR Measurement Data

ALSAS-10U VER 2.3.2APREL Laboratories

SAR Test Report (802.11g)

Report Date : 29-Nov-2006
Measurement Date : 29-Nov-2006

Product Data

Device Name : ASUS
Type : Std Form Cell Phone
Model : AiGuru S2
Frequency : 2450.00 MHz
Max. Transmit Pwr : 0 W
Drift Time : 0 min(s)
Length : 116.1 mm
Width : 47 mm
Depth : 14.4 mm
Antenna Type : Internal
Orientation : Touch
Picture :

Phantom Data

Name : APREL-SAM Left Ear
Type : SAM-Left
Size (mm) : 280 x 280 x 280
Serial No. : User Define
Location : Left
Description : SAM-Left User Define

Tissue Data

Type : HEAD
Serial No. : 325-H
Frequency : 2450.00 MHz
Last Calib. Date : 29-Nov-2006
Temperature : 21.80 °C
Ambient Temp. : 22.10 °C
Humidity : 54.00 RH%
Epsilon : 38.22 F/m
Sigma : 1.841 S/m
Density : 1000.00 kg/cu. M

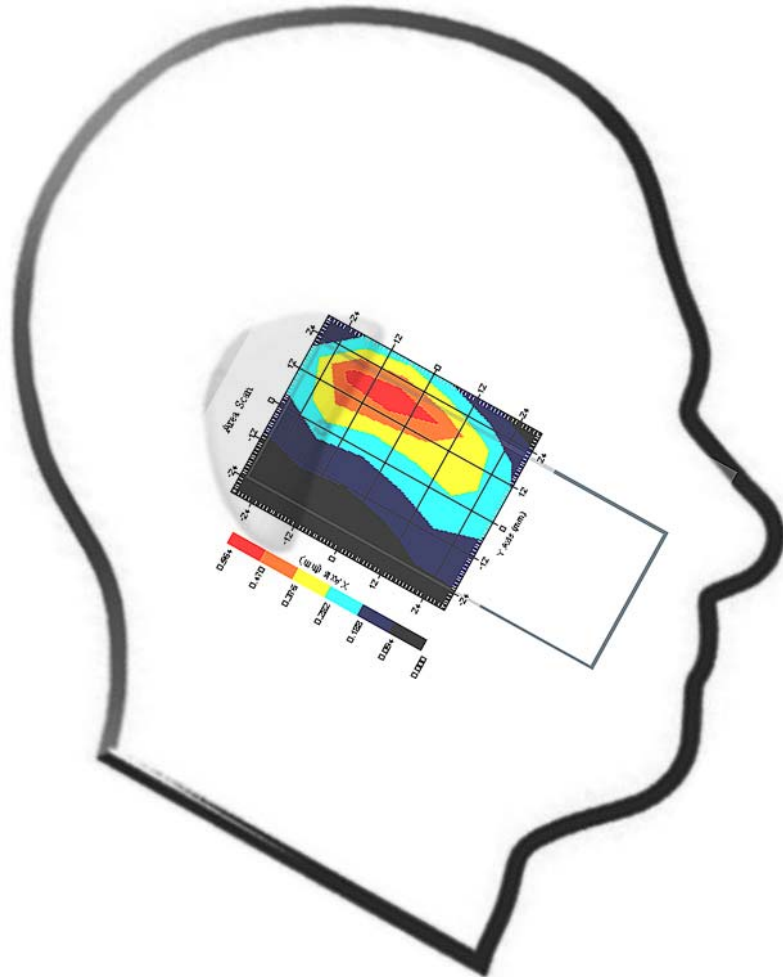
Probe Data

Name : Probe 264
Model : E020
Type : E-Field Triangle
Serial No. : 264
Last Calib. Date : 21-Mar-2006
Frequency : 2450.00 MHz
Duty Cycle Factor: 1
Conversion Factor: 5
Probe Sensitivity: 1.20 1.20 1.20 $\mu\text{V}/(\text{V}/\text{m})^2$
Compression Point: 95.00 mV
Offset : 1.56 mm

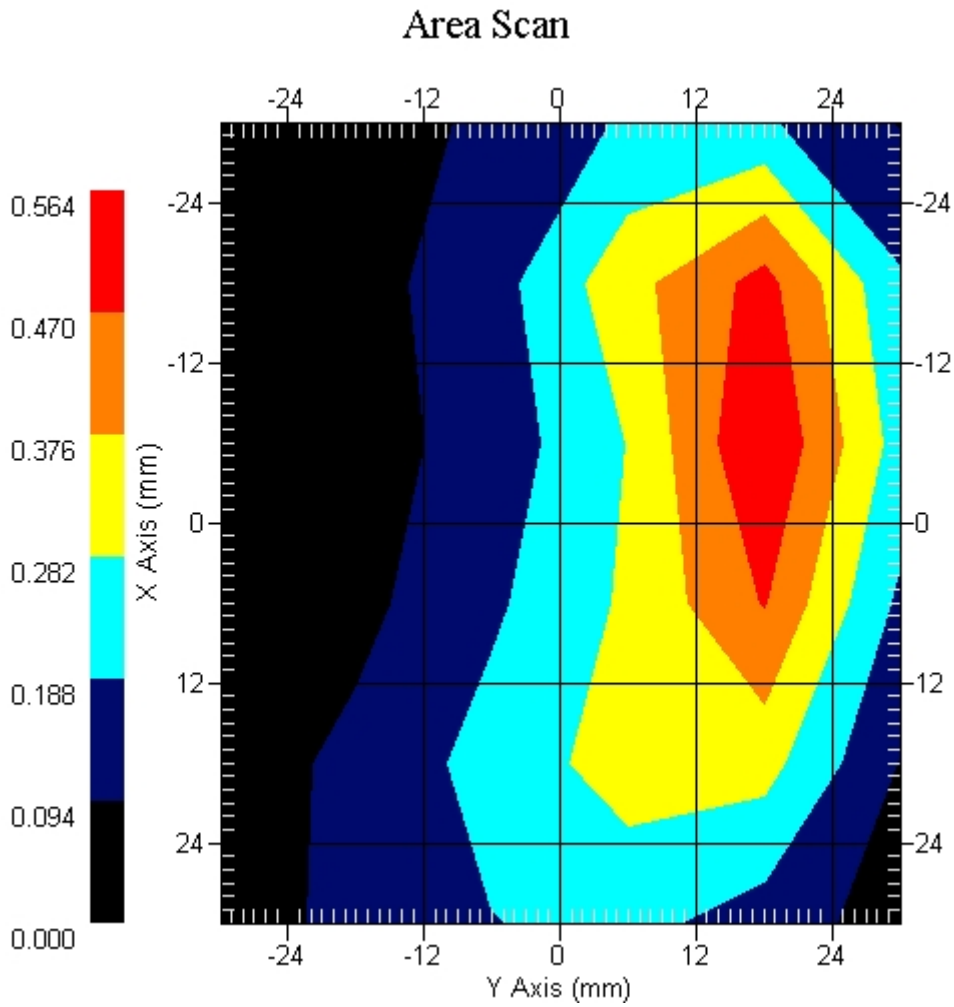
Measurement Data

Crest Factor : 1
Tissue Temp. : 21.80 °C
Ambient Temp. : 22.10 °C
Area Scan : 6x6x1 : Measurement x=12mm, y=12mm, z=4mm
Zoom Scan : 7x7x7 : Measurement x=5mm, y=5mm, z=5mm
Power Drift-Start : 0.227 W/kg
Power Drift-Finish: 0.221 W/kg
Power Drift (%) : -2.648

DUT Position : Touch
Channel : 1



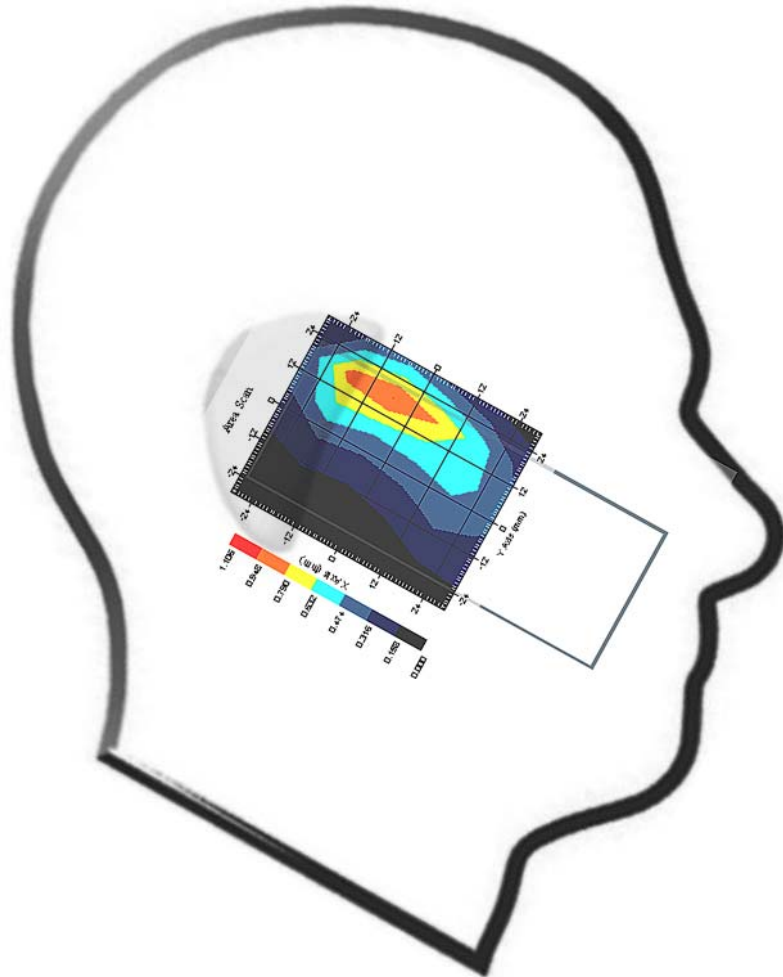
This is previous page plot (zoom in)



Measurement Data

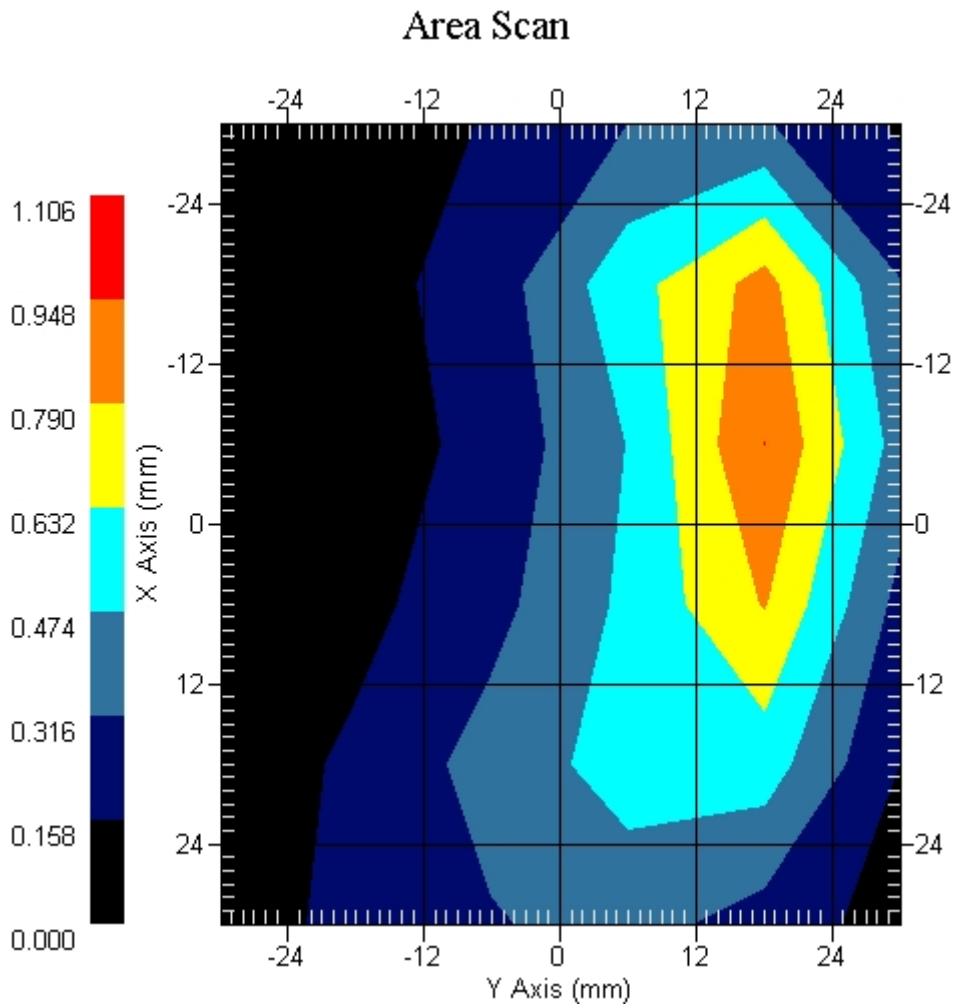
Crest Factor : 1
Tissue Temp. : 21.80 °C
Ambient Temp. : 22.10 °C
Area Scan : 6x6x1 : Measurement x=12mm, y=12mm, z=4mm
Zoom Scan : 7x7x7 : Measurement x=5mm, y=5mm, z=5mm
Power Drift-Start : 0.382 W/kg
Power Drift-Finish: 0.381 W/kg
Power Drift (%) : -0.221

DUT Position : Touch
Channel : 6



1 gram SAR value : 0.842 W/kg
10 gram SAR value : 0.400 W/kg
Area Scan Peak SAR : 0.949 W/kg
Zoom Scan Peak SAR : 1.751 W/kg

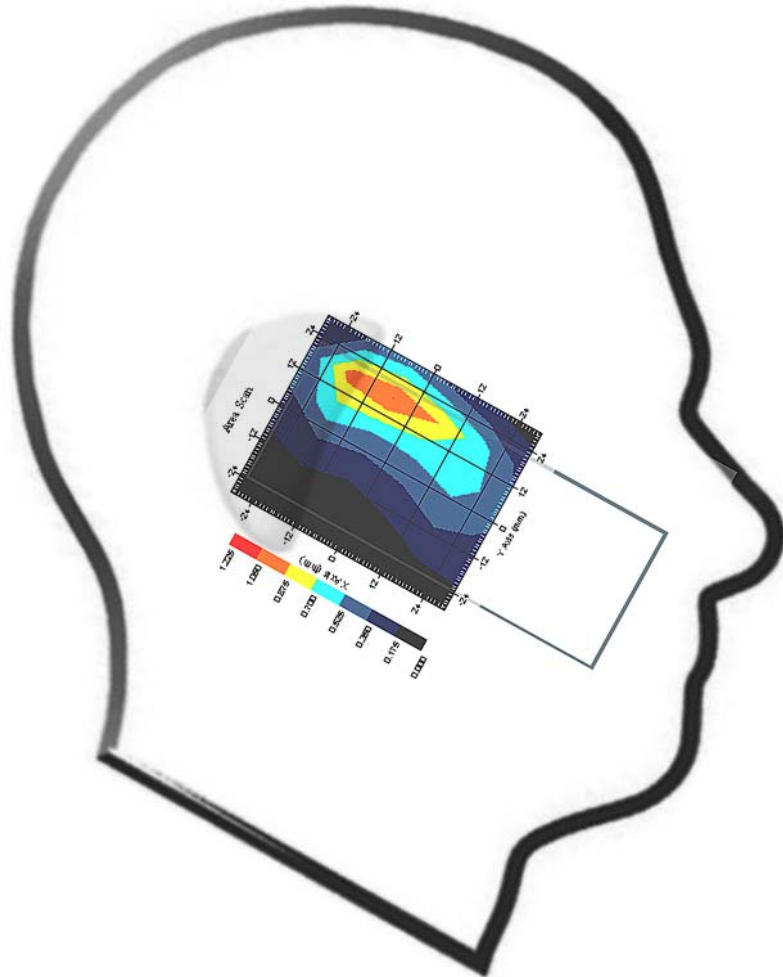
This is previous page plot (zoom in)



Measurement Data

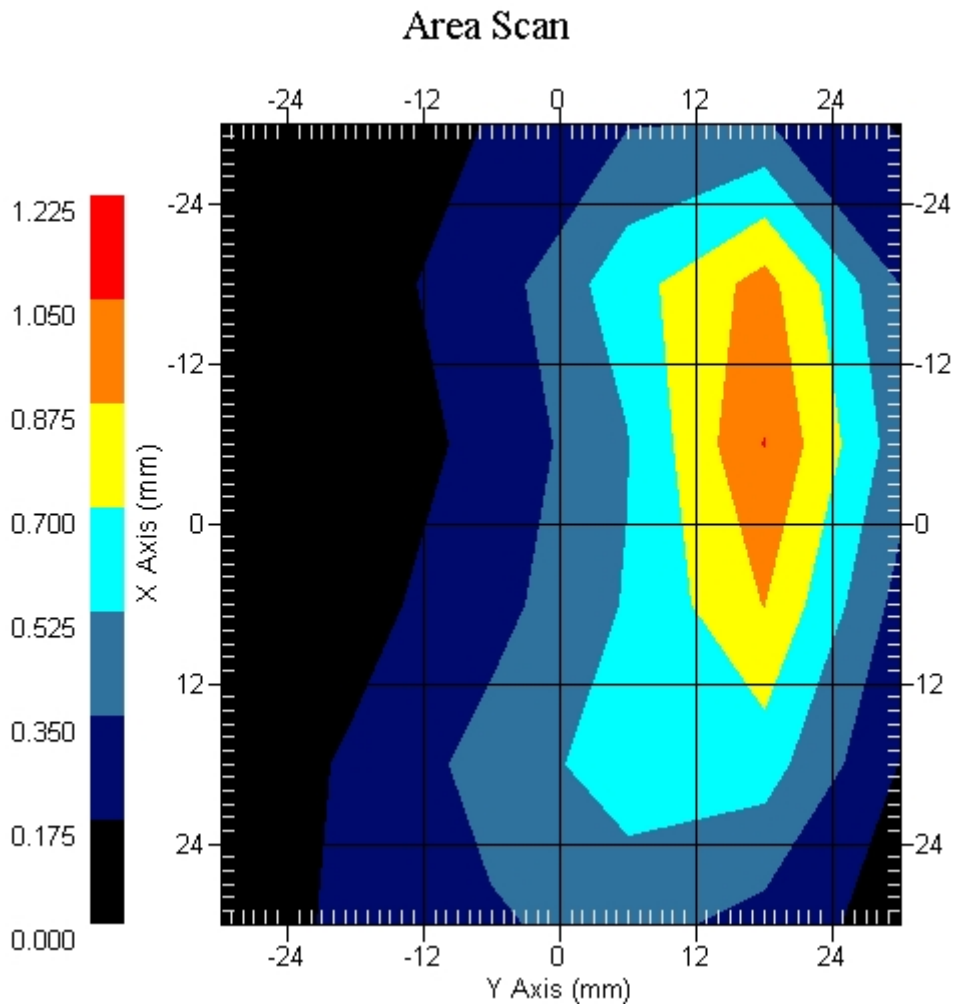
Crest Factor : 1
Tissue Temp. : 21.80 °C
Ambient Temp. : 22.10 °C
Area Scan : 6x6x1 : Measurement x=12mm, y=12mm, z=4mm
Zoom Scan : 7x7x7 : Measurement x=5mm, y=5mm, z=5mm
Power Drift-Start : 0.407 W/kg
Power Drift-Finish: 0.408 W/kg
Power Drift (%) : 0.084

DUT Position : Touch
Channel : 11



1 gram SAR value : 0.951 W/kg
10 gram SAR value : 0.455 W/kg
Area Scan Peak SAR : 1.053 W/kg
Zoom Scan Peak SAR : 1.941 W/kg

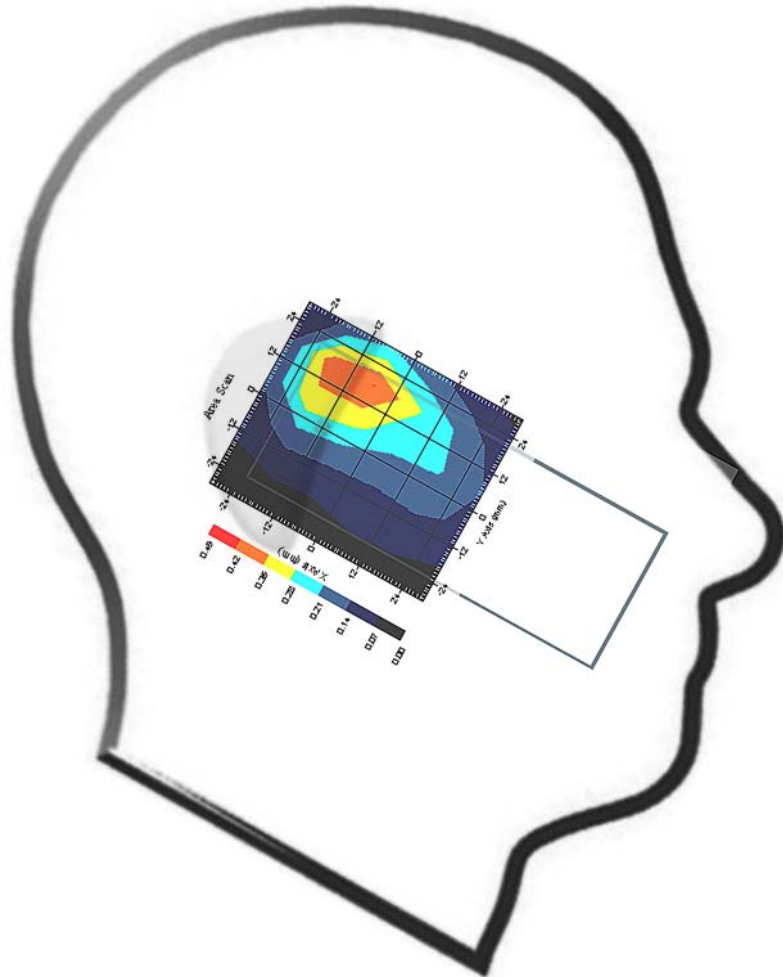
This is previous page plot (zoom in)



Measurement Data

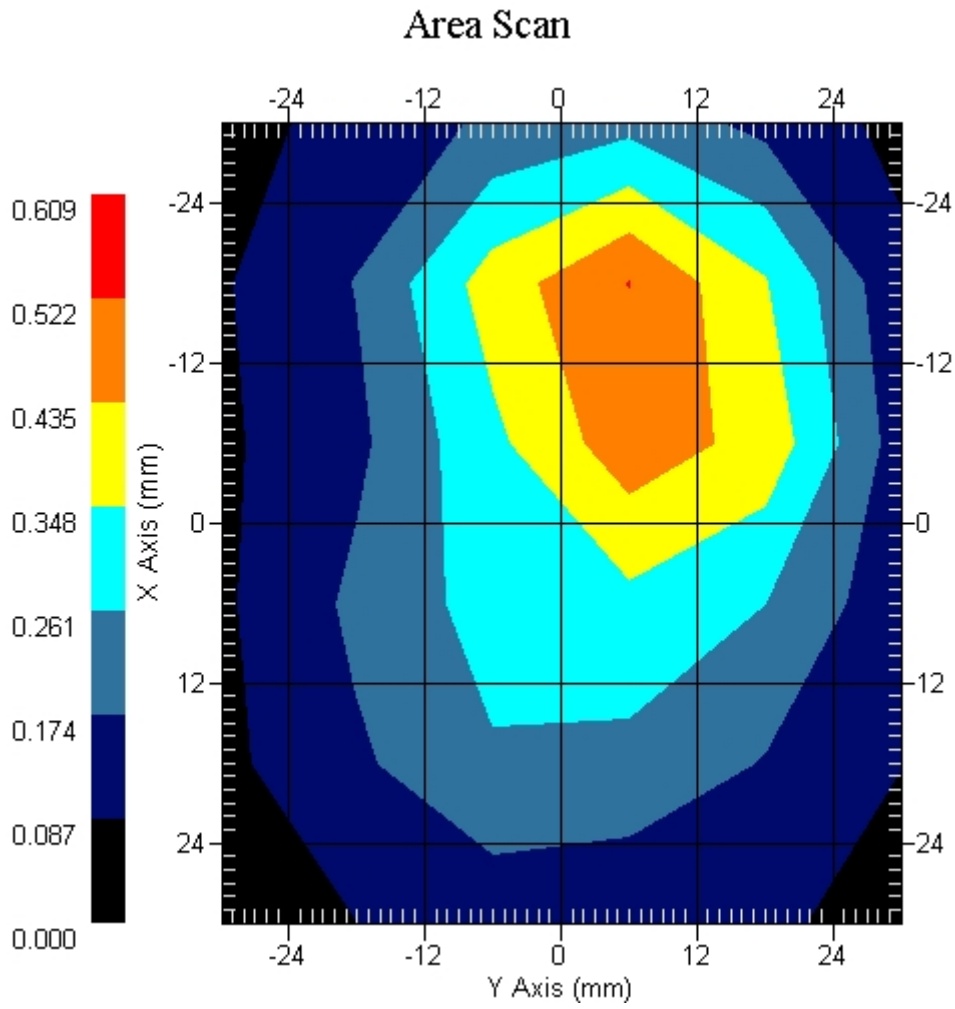
Crest Factor : 1
Tissue Temp. : 21.80 °C
Ambient Temp. : 22.10 °C
Area Scan : 6x6x1 : Measurement x=12mm, y=12mm, z=4mm
Zoom Scan : 7x7x7 : Measurement x=5mm, y=5mm, z=5mm
Power Drift-Start : 0.285 W/kg
Power Drift-Finish: 0.276 W/kg
Power Drift (%) : -2.948

DUT Position : 15° Tilt
Channel : 1



1 gram SAR value : 0.370 W/kg
10 gram SAR value : 0.183 W/kg
Area Scan Peak SAR : 0.422 W/kg
Zoom Scan Peak SAR : 0.750 W/kg

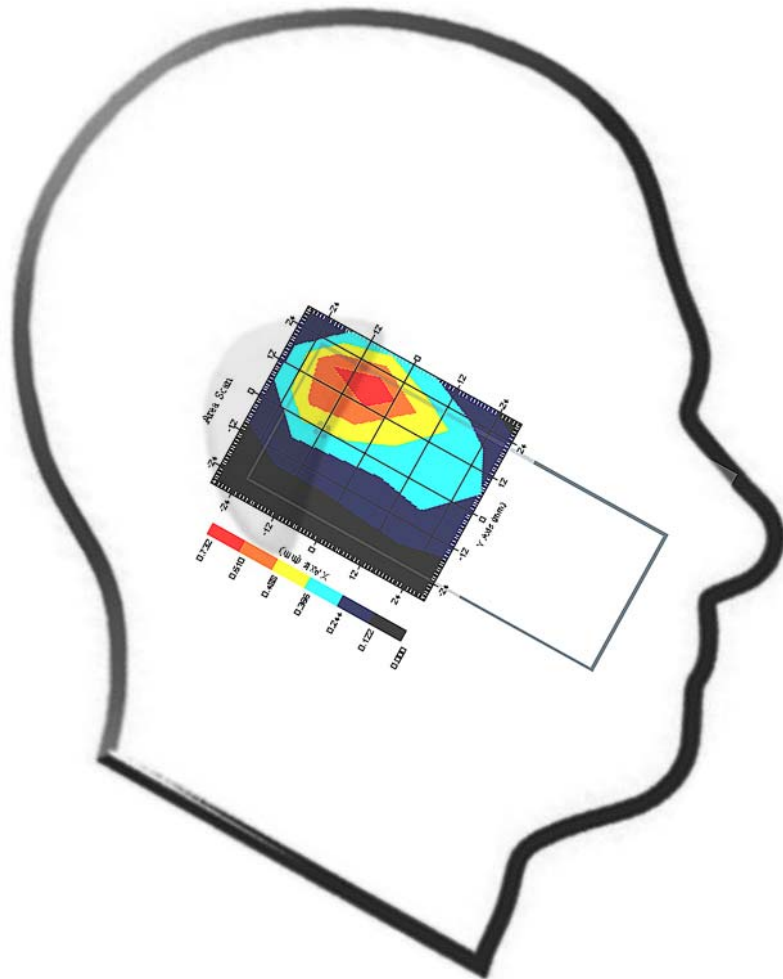
This is previous page plot (zoom in)



Measurement Data

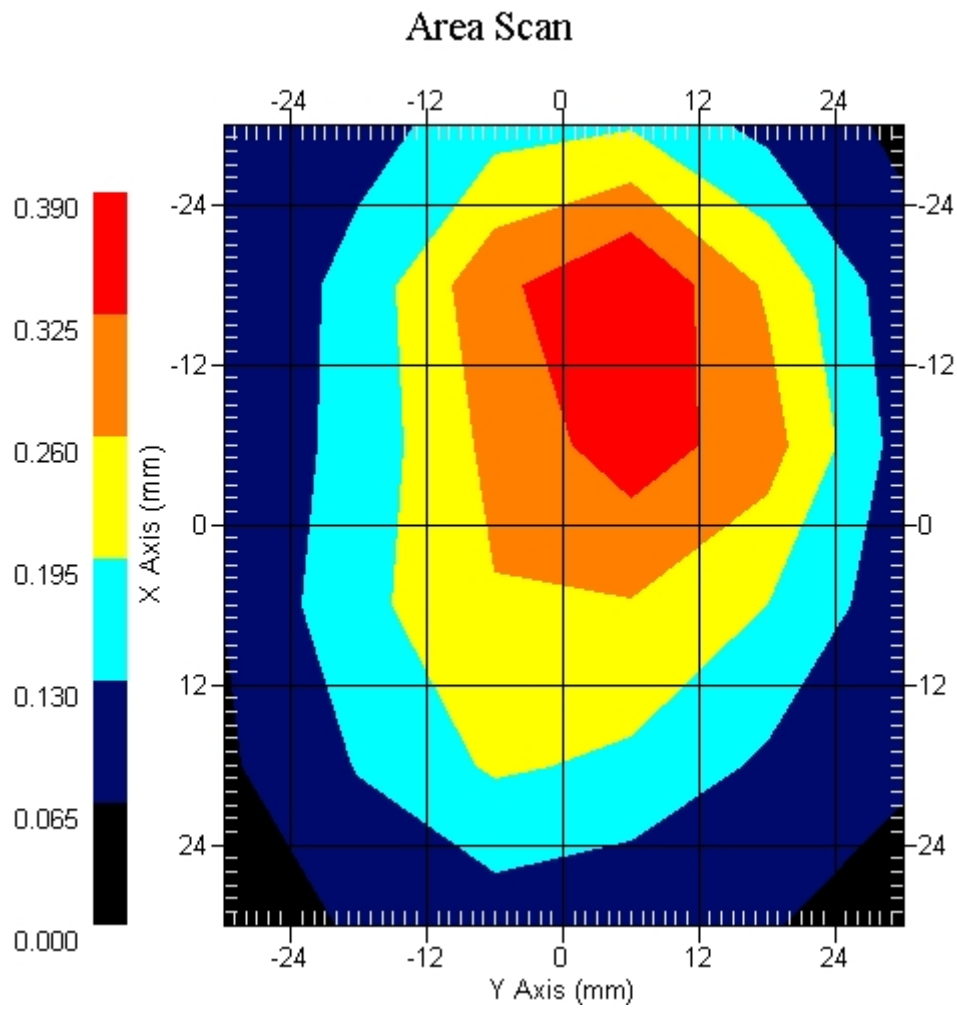
Crest Factor : 1
Tissue Temp. : 21.80 °C
Ambient Temp. : 22.10 °C
Area Scan : 6x6x1 : Measurement x=12mm, y=12mm, z=4mm
Zoom Scan : 7x7x7 : Measurement x=5mm, y=5mm, z=5mm
Power Drift-Start : 0.382 W/kg
Power Drift-Finish: 0.379 W/kg
Power Drift (%) : -0.683

DUT Position : 15° Tilt
Channel : 6



1 gram SAR value : 0.648 W/kg
10 gram SAR value : 0.309 W/kg
Area Scan Peak SAR : 0.730 W/kg
Zoom Scan Peak SAR : 1.311 W/kg

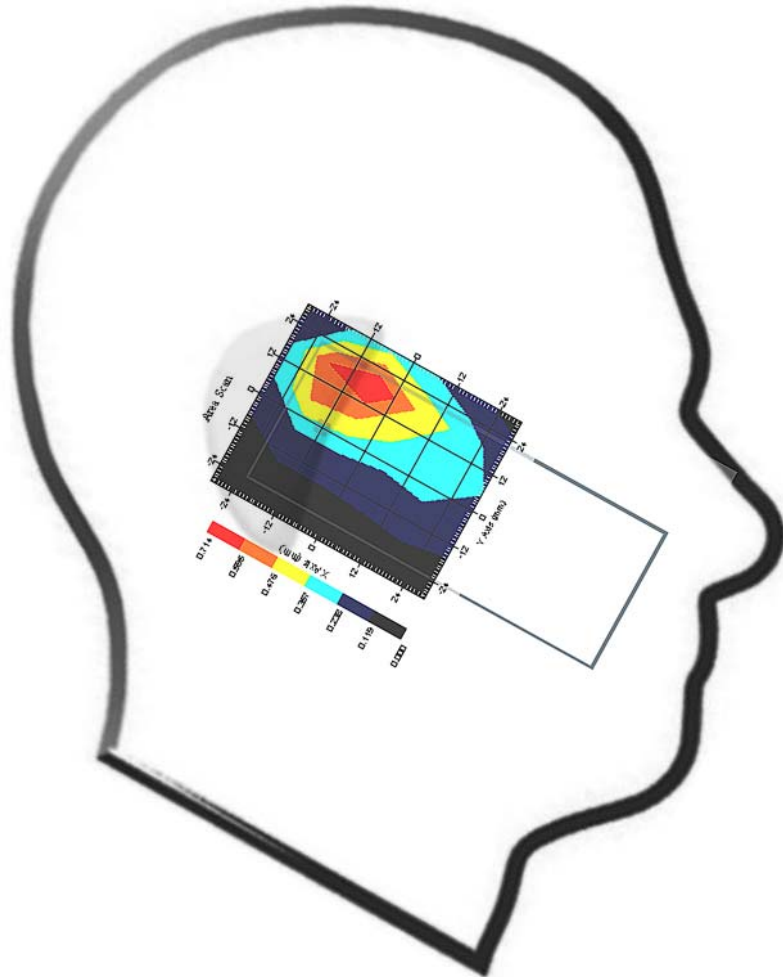
This is previous page plot (zoom in)



Measurement Data

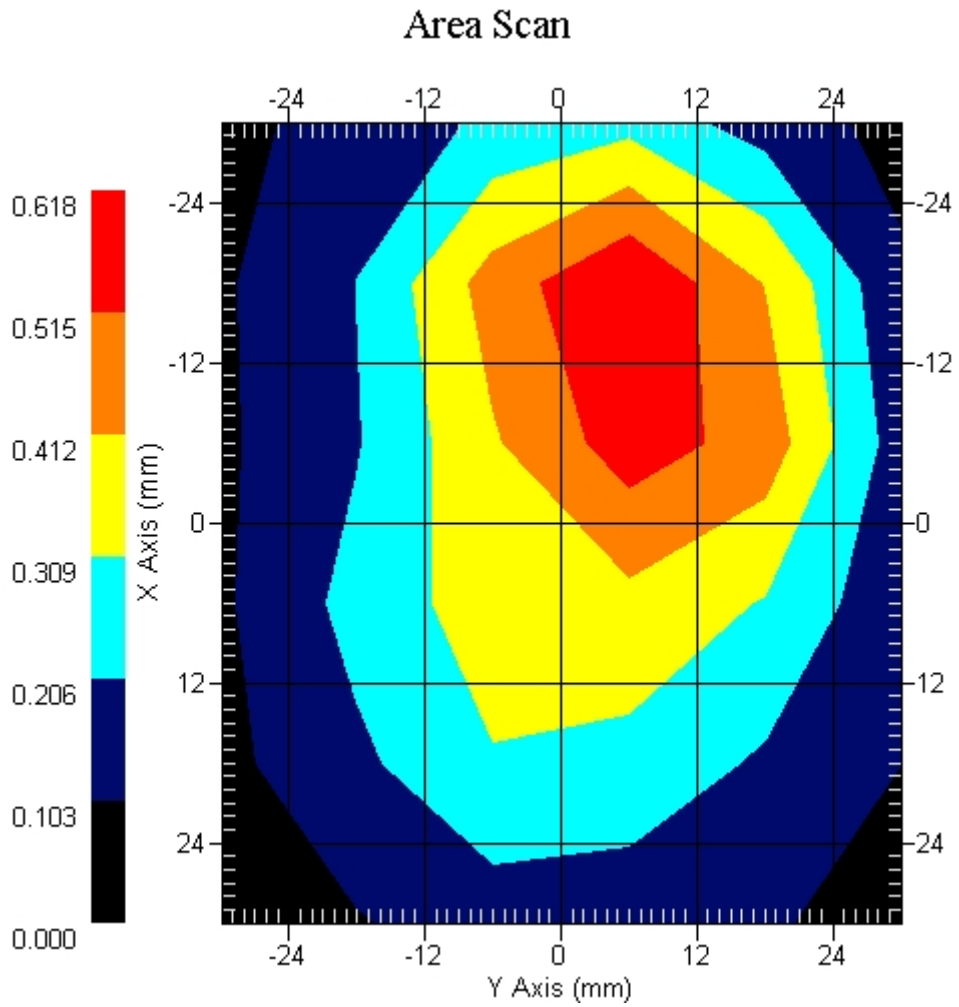
Crest Factor : 1
Tissue Temp. : 21.80 °C
Ambient Temp. : 22.10 °C
Area Scan : 6x6x1 : Measurement x=12mm, y=12mm, z=4mm
Zoom Scan : 7x7x7 : Measurement x=5mm, y=5mm, z=5mm
Power Drift-Start : 0.348 W/kg
Power Drift-Finish: 0.349 W/kg
Power Drift (%) : 0.341

DUT Position : 15° Tilt
Channel : 11



1 gram SAR value : 0.645 W/kg
10 gram SAR value : 0.307 W/kg
Area Scan Peak SAR : 0.712 W/kg
Zoom Scan Peak SAR : 1.331 W/kg

This is previous page plot (zoom in)



SAR Measurement Data

ALSAS-10U VER 2.3.2APREL Laboratories

SAR Test Report (802.11g)

Report Date : 29-Nov-2006
Measurement Date : 29-Nov-2006

Product Data

Device Name : ASUS
Type : Std Form Cell Phone
Frequency : 2450.00 MHz
Max. Transmit Pwr : 0 W
Drift Time : 0 min(s)
Length : 116.1 mm
Width : 47 mm
Depth : 14.4 mm
Antenna Type : Internal

Phantom Data

Type : Uni-Phantom
Size (mm) : 280 x 280 x 200
Location : Center

Tissue Data

Type : BODY
Serial No. : 325-B
Frequency : 2450.00 MHz
Last Calib. Date : 29-Nov-2006
Temperature : 21.80 °C
Ambient Temp. : 22.10 °C
Humidity : 54.00 RH%
Epsilon : 51.25 F/m
Sigma : 1.986 S/m
Density : 1000.00 kg/cu. M

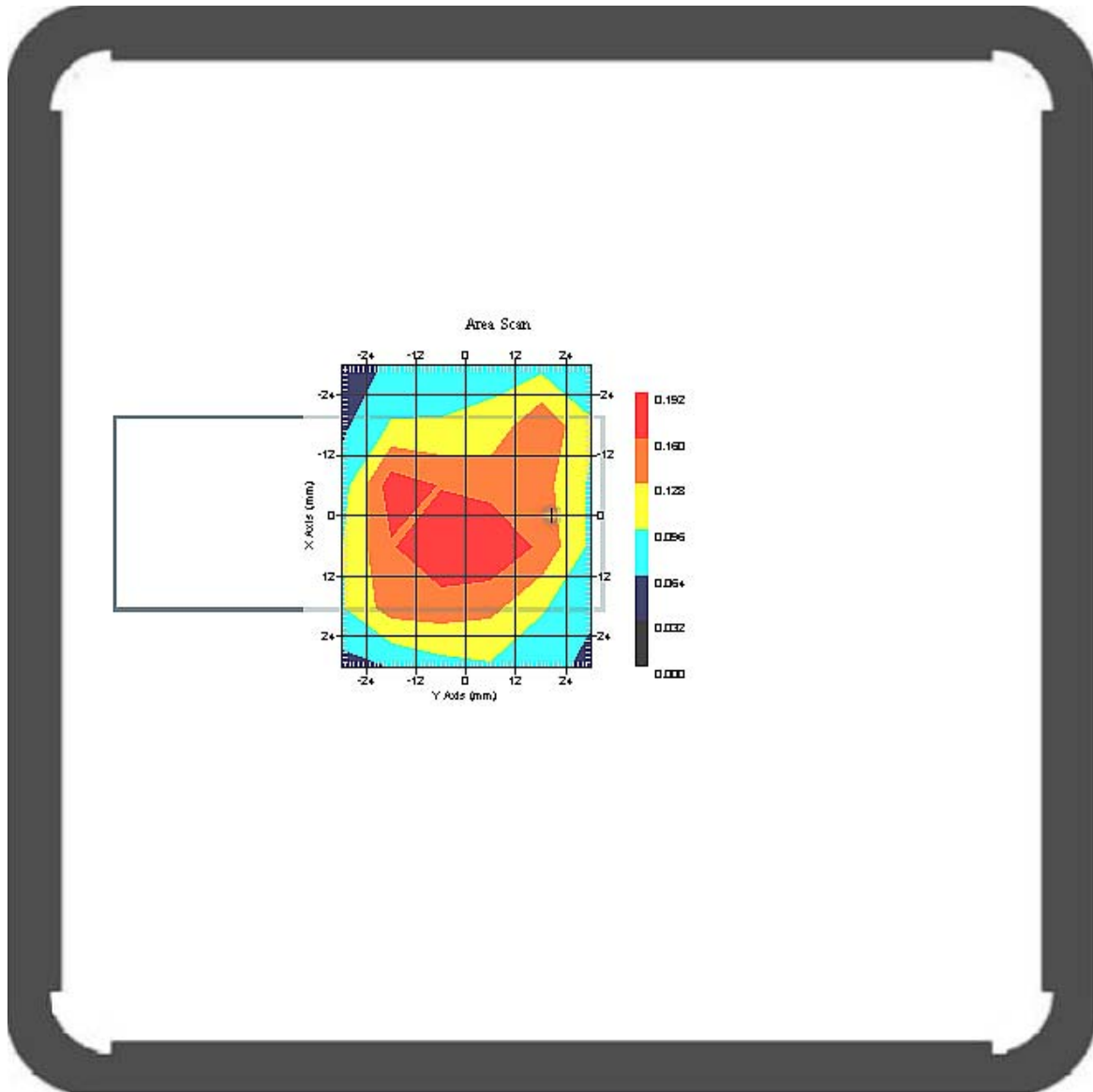
Probe Data

Name : Probe 264
Model : E020
Type : E-Field Triangle
Serial No. : 264
Last Calib. Date : 21-Mar-2006
Frequency : 2450.00 MHz
Duty Cycle Factor: 1
Conversion Factor: 5
Probe Sensitivity: 1.20 1.20 1.20 $\mu\text{V}/(\text{V}/\text{m})^2$
Compression Point: 95.00 mV
Offset : 1.56 mm

Measurement Data

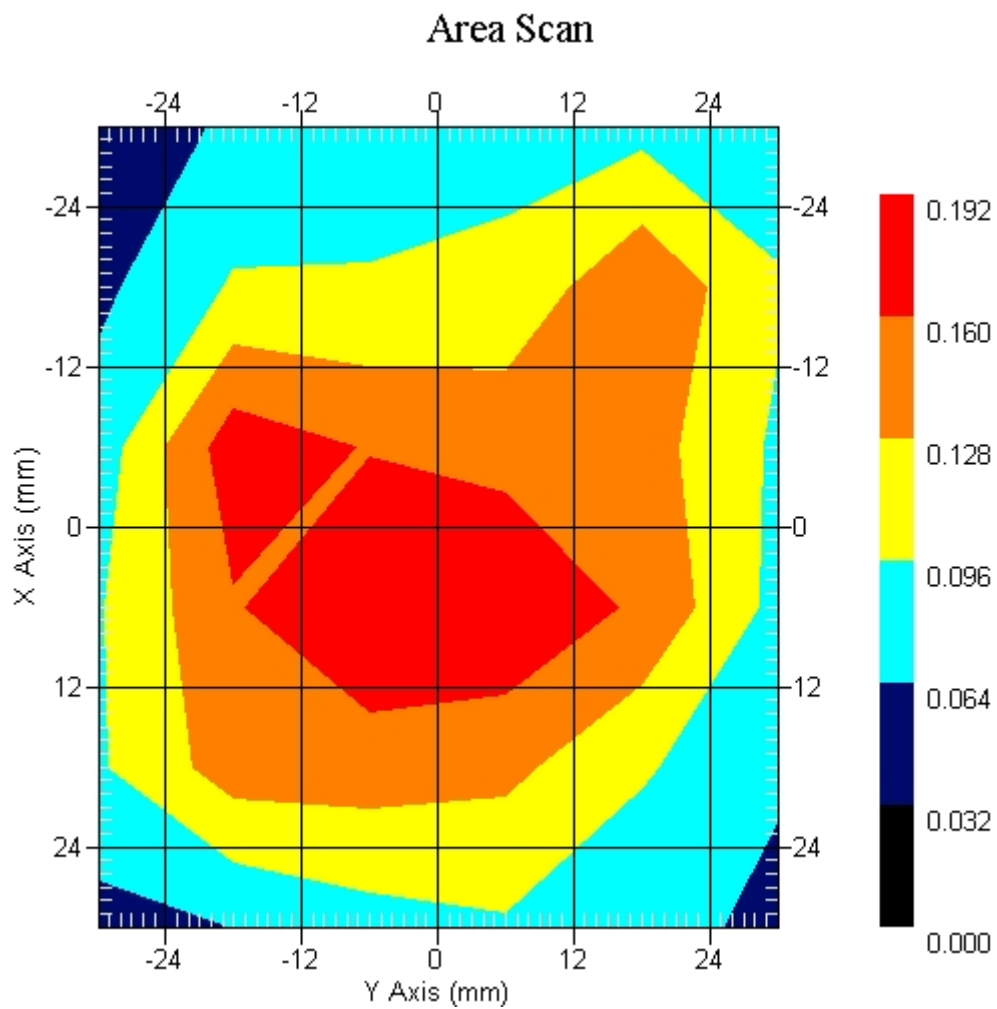
Crest Factor : 1
Tissue Temp. : 21.80 °C
Ambient Temp. : 22.10 °C
Area Scan : 6x6x1 : Measurement x=12mm, y=12mm, z=4mm
Zoom Scan : 7x7x7 : Measurement x=5mm, y=5mm, z=5mm
Power Drift-Start : 0.148 W/kg
Power Drift-Finish: 0.147 W/kg
Power Drift (%) : -0.886

DUT Position : Rotated Left 90°
Channel : 1



1 gram SAR value : 0.188 W/kg
10 gram SAR value : 0.107 W/kg
Area Scan Peak SAR : 0.190 W/kg
Zoom Scan Peak SAR : 0.360 W/kg

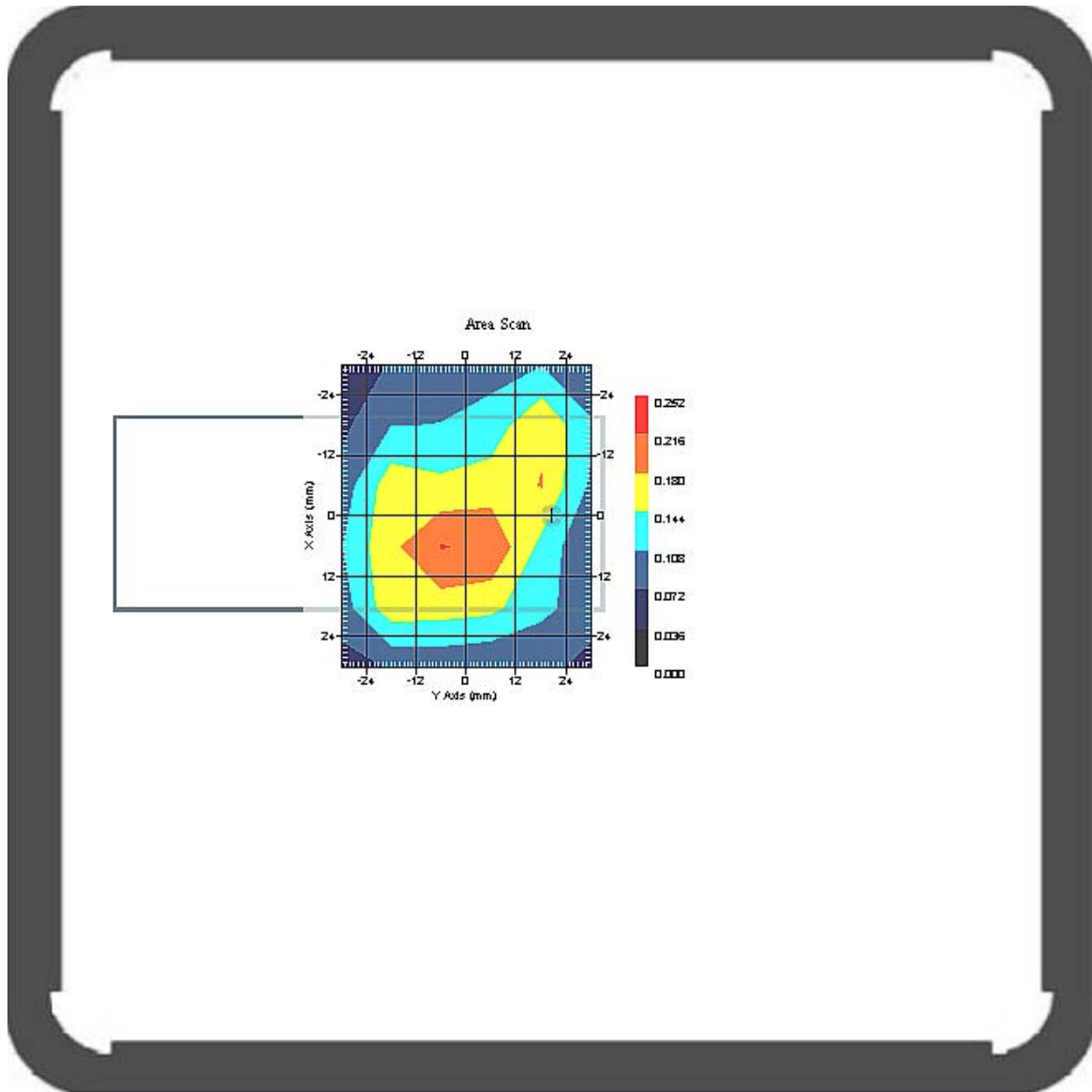
This is previous page plot (zoom in)



Measurement Data

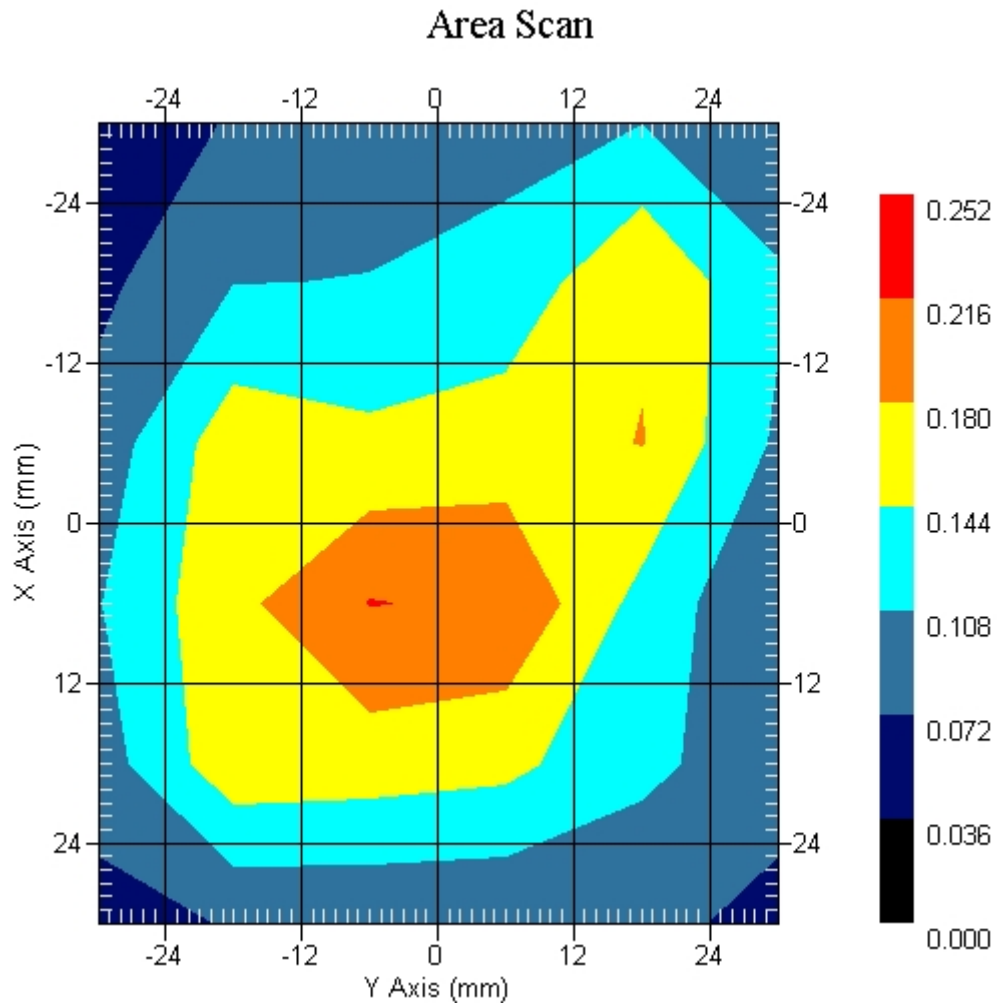
Crest Factor : 1
Tissue Temp. : 21.80 °C
Ambient Temp. : 22.10 °C
Area Scan : 6x6x1 : Measurement x=12mm, y=12mm, z=4mm
Zoom Scan : 7x7x7 : Measurement x=5mm, y=5mm, z=5mm
Power Drift-Start : 0.187 W/kg
Power Drift-Finish: 0.187 W/kg
Power Drift (%) : 0.508

DUT Position : Rotated Left 90°
Channel : 6



1 gram SAR value : 0.193 W/kg
10 gram SAR value : 0.112 W/kg
Area Scan Peak SAR : 0.217 W/kg
Zoom Scan Peak SAR : 0.350 W/kg

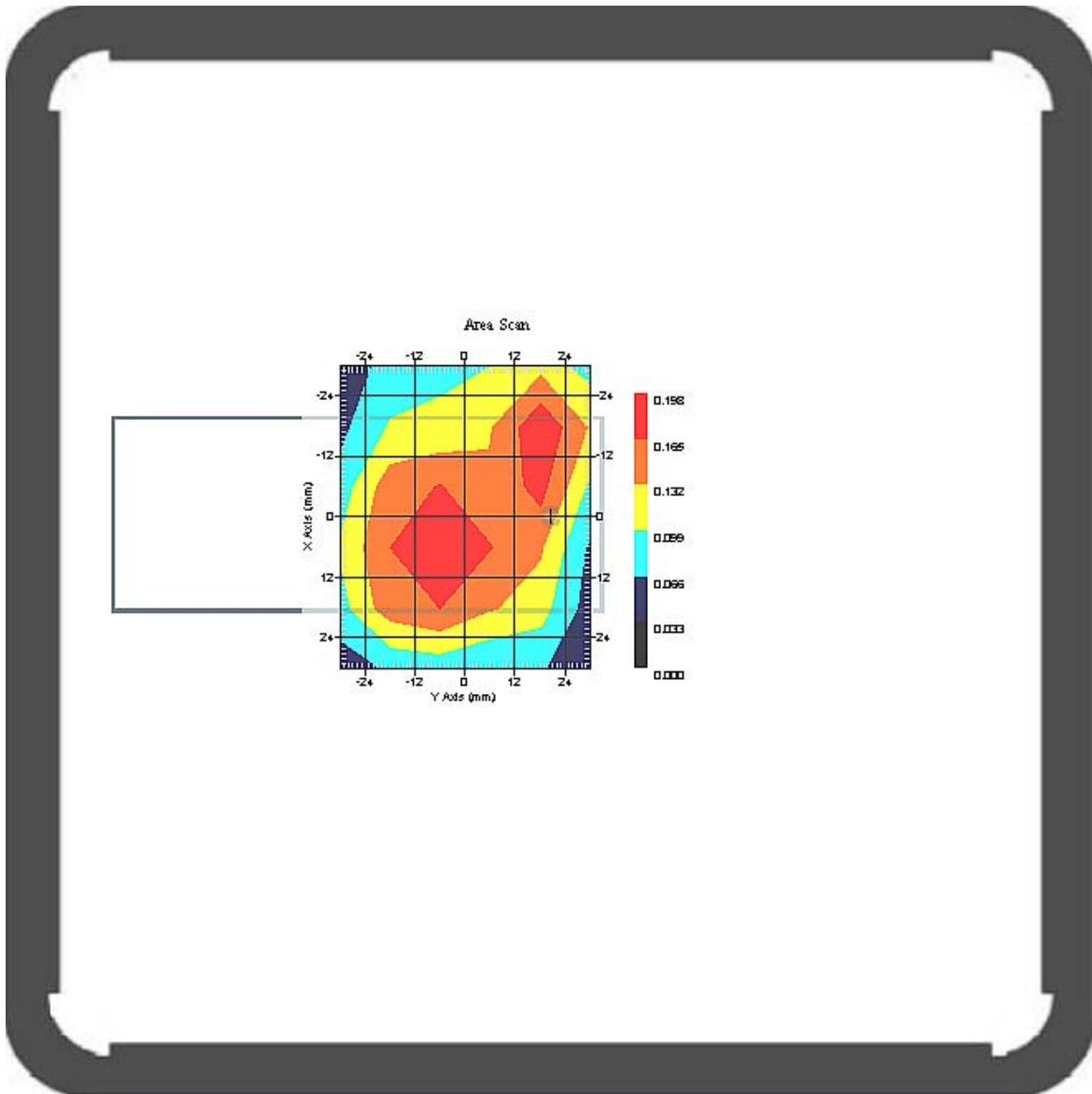
This is previous page plot (zoom in)



Measurement Data

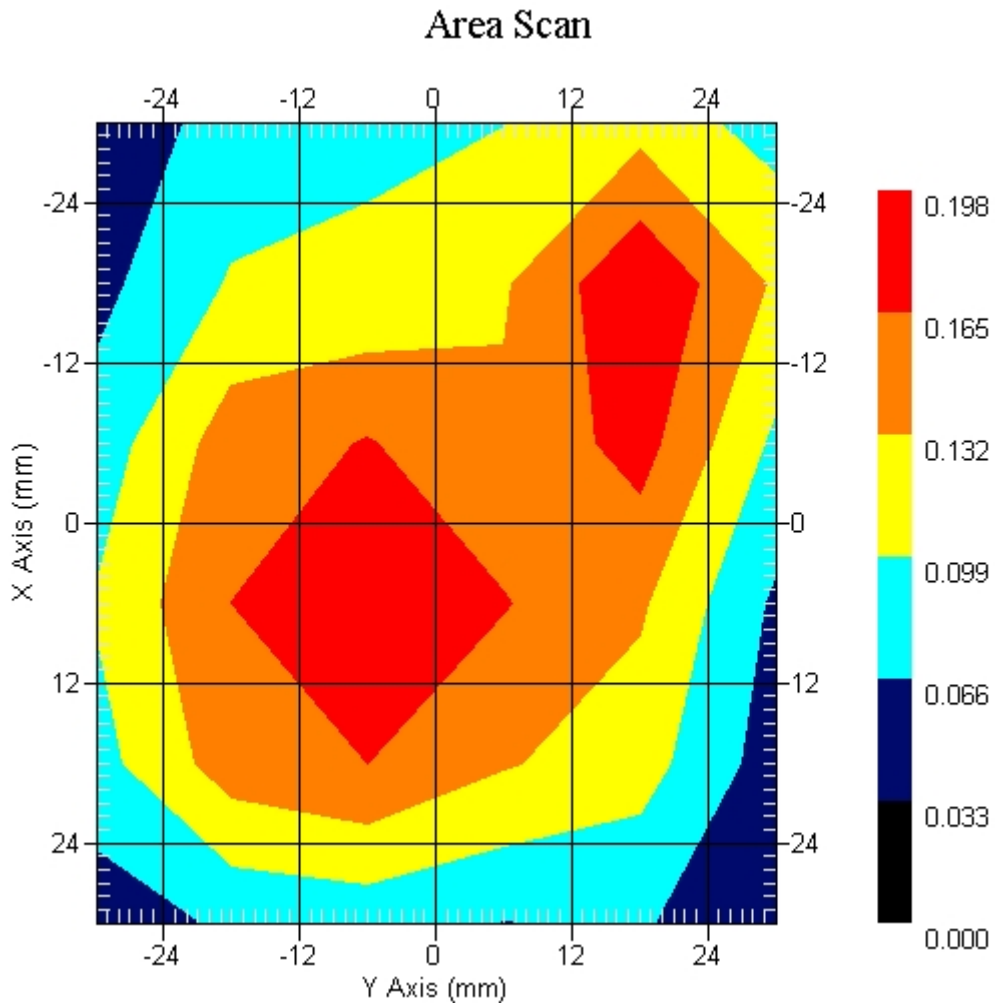
Crest Factor : 1
Tissue Temp. : 21.80 °C
Ambient Temp. : 22.10 °C
Area Scan : 6x6x1 : Measurement x=12mm, y=12mm, z=4mm
Zoom Scan : 7x7x7 : Measurement x=5mm, y=5mm, z=5mm
Power Drift-Start : 0.151 W/kg
Power Drift-Finish: 0.146 W/kg
Power Drift (%) : -3.382

DUT Position : Rotated Left 90°
Channel : 11



1 gram SAR value : 0.171 W/kg
10 gram SAR value : 0.104 W/kg
Area Scan Peak SAR : 0.196 W/kg
Zoom Scan Peak SAR : 0.310 W/kg

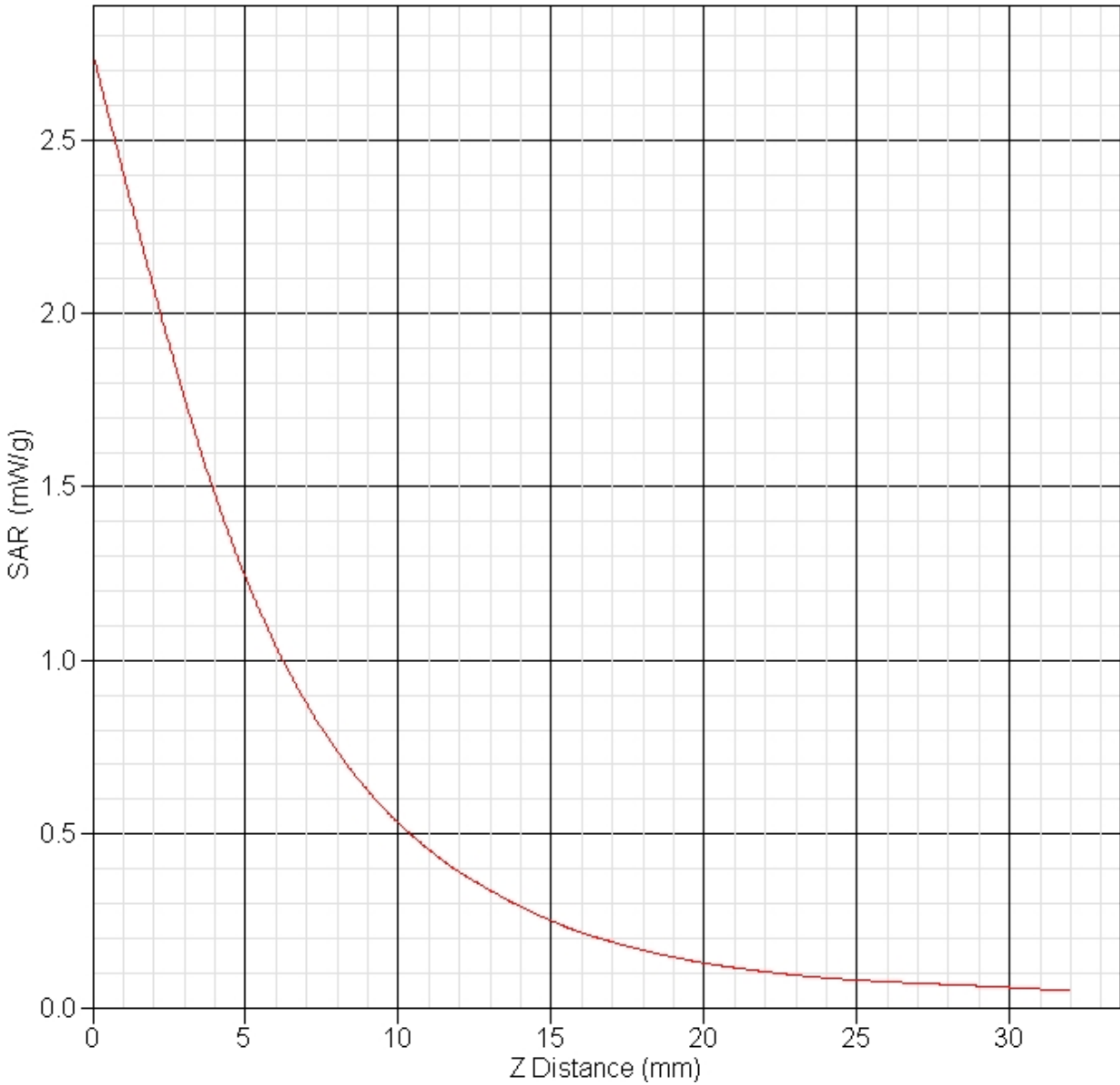
This is previous page plot (zoom in)



EUT 2450MHz SAR test Z-Axis plot

(802.11b, Channel 11)

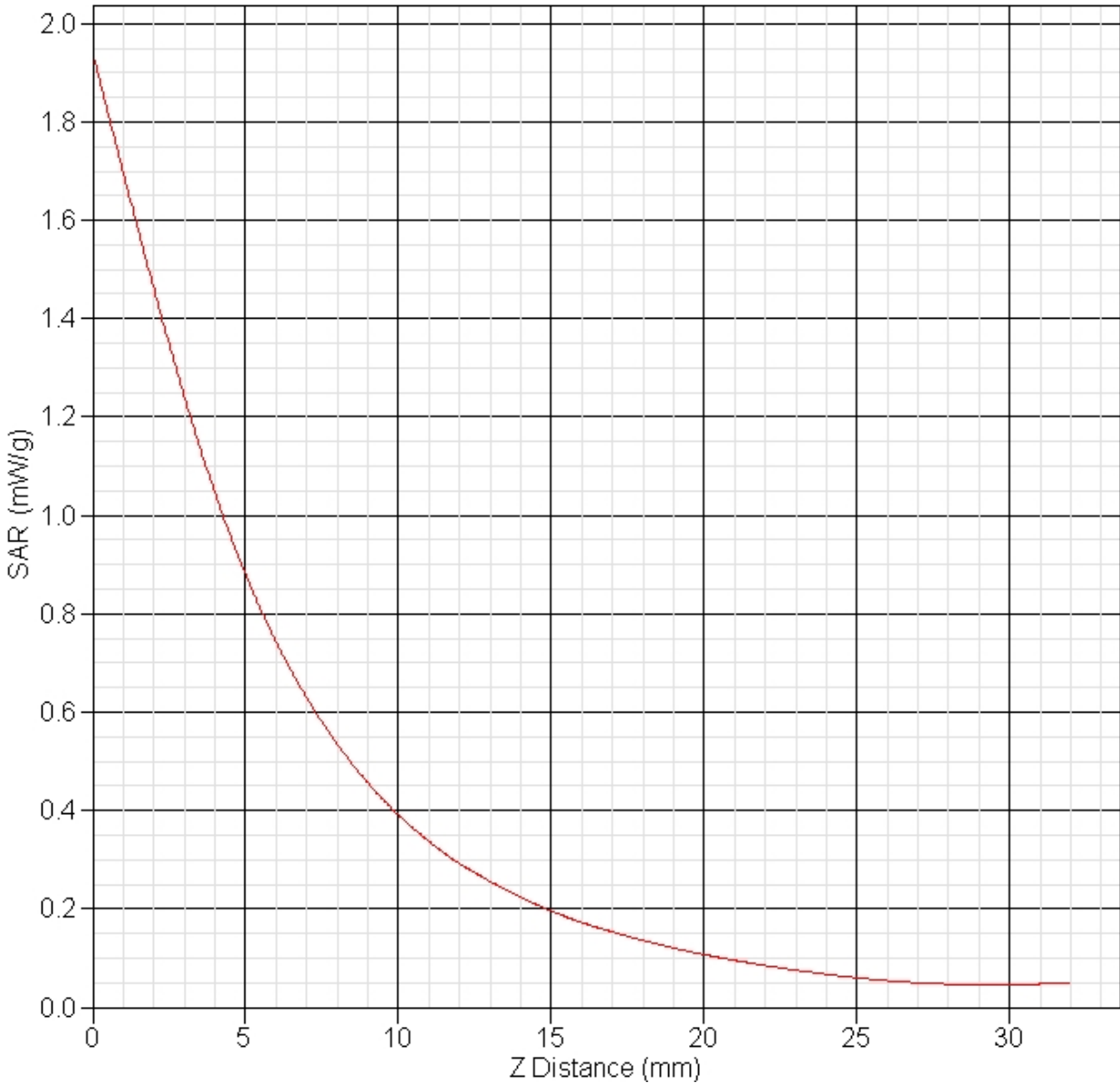
SAR-Z Axis
at Hotspot x:-3.82 y:17.77



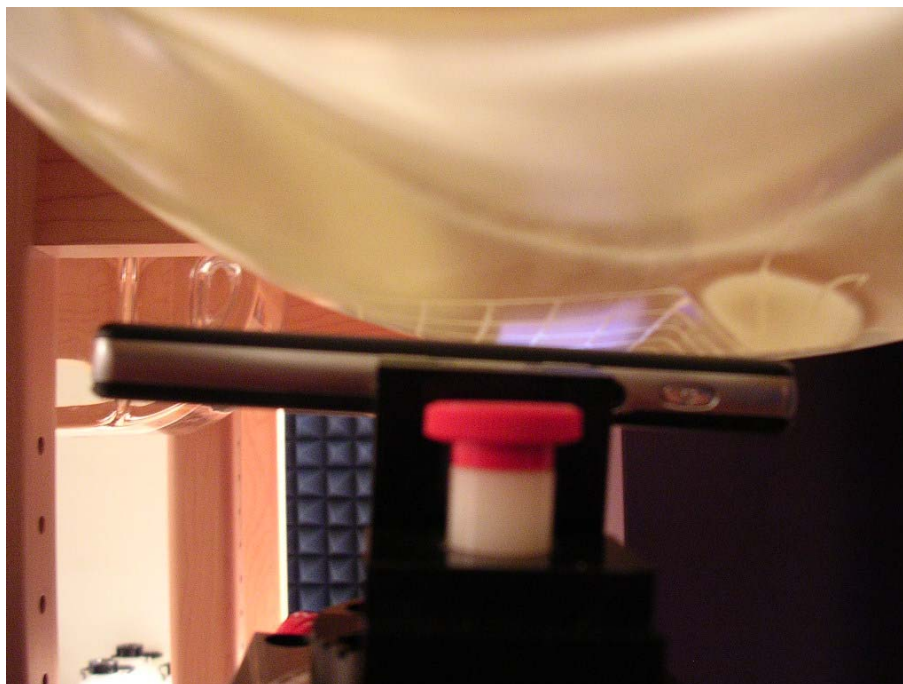
EUT 2450MHz SAR test Z-Axis plot

(802.11g, Channel 11)

SAR-Z Axis
at Hotspot x:4.13 y:17.84



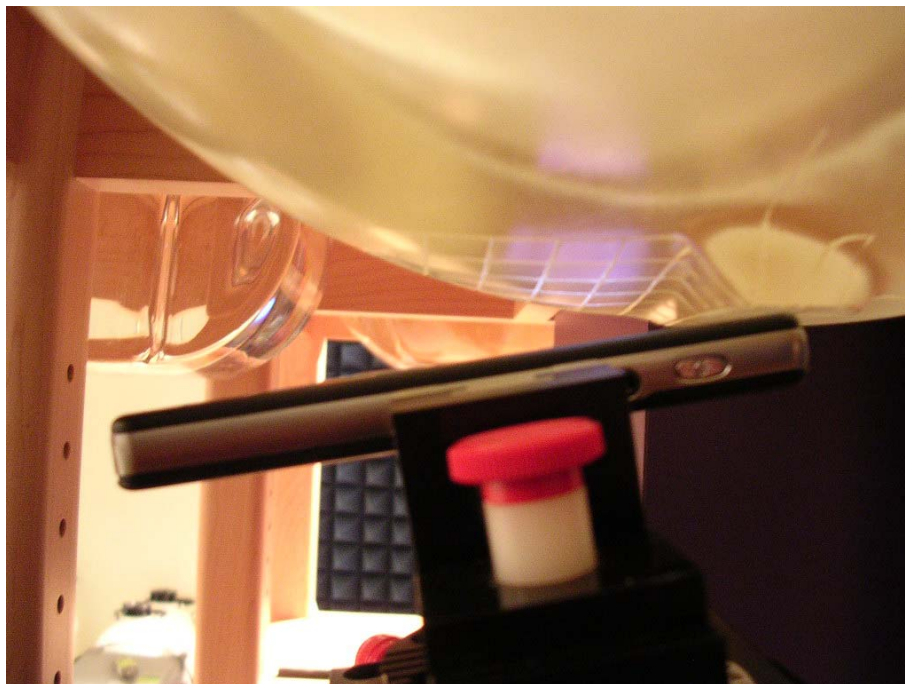
**Test Setup Photographs
Right Head (EUT Cheek)**



Left Head (EUT Cheek)

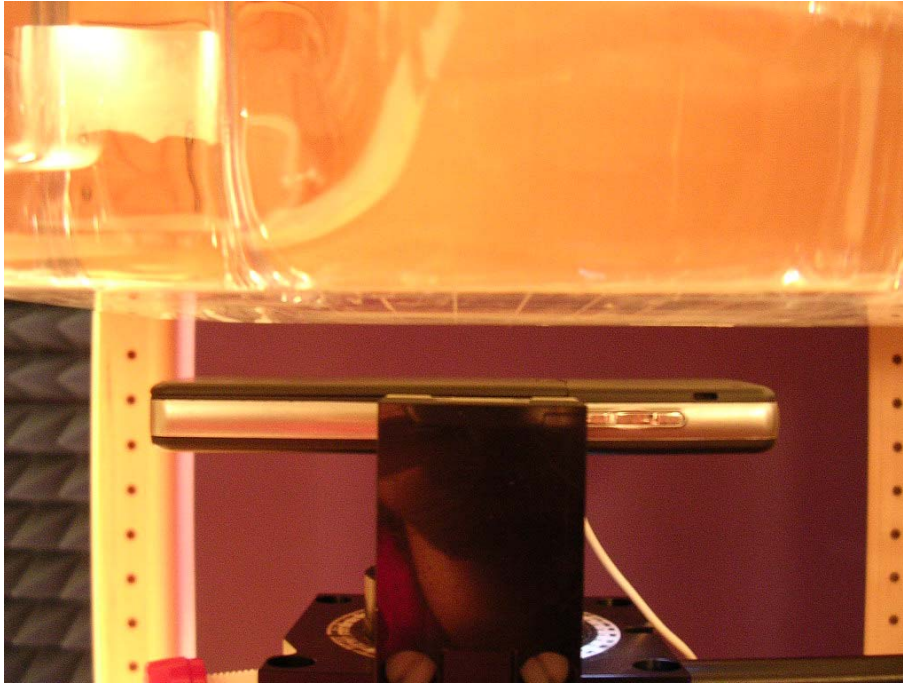


Right Head (EUT Tilted)



Left Head (EUT Tilted)



Body (15mm Separation)

Note: The positions used in the measurements were according to IEEE 1528-2003.