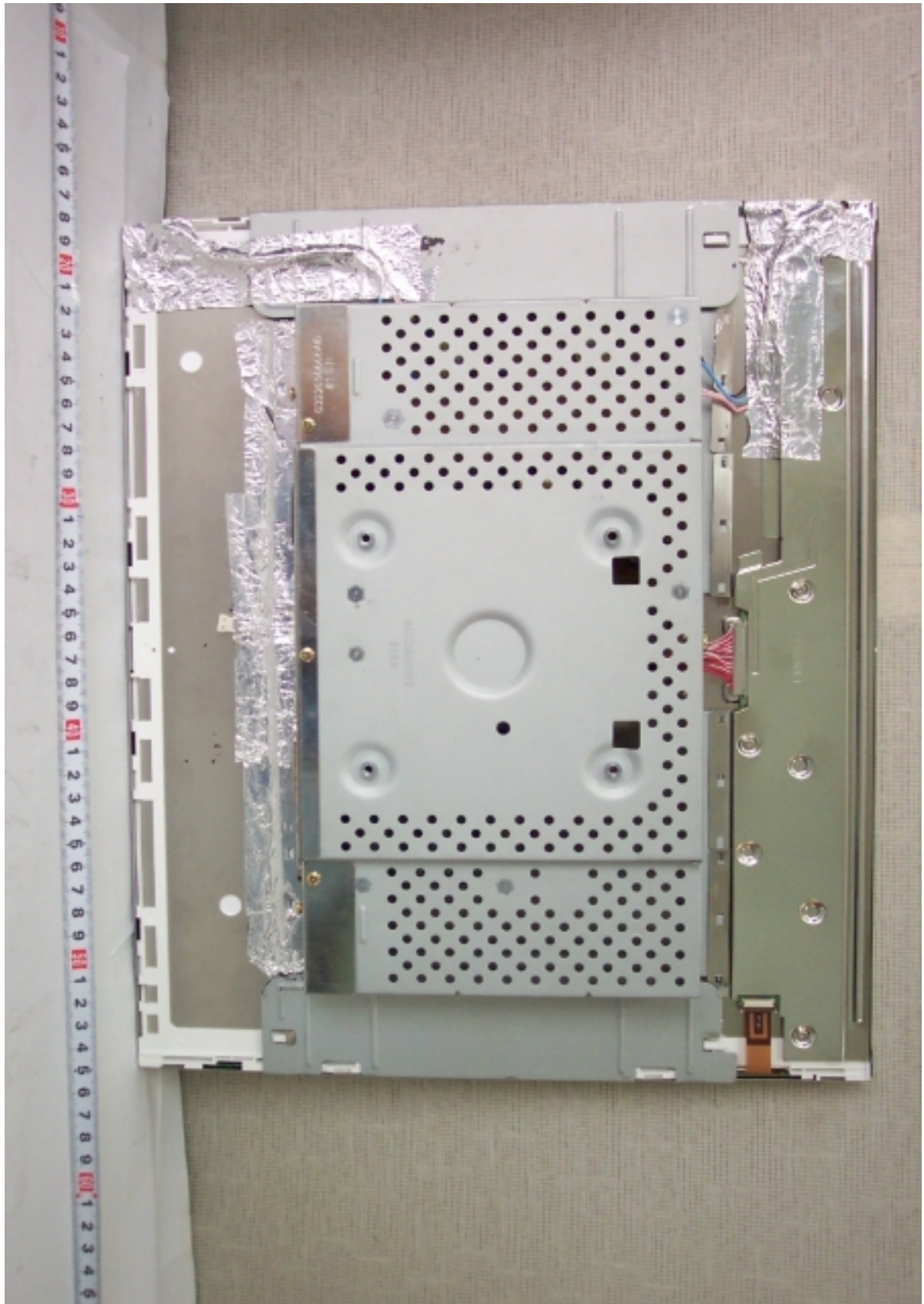
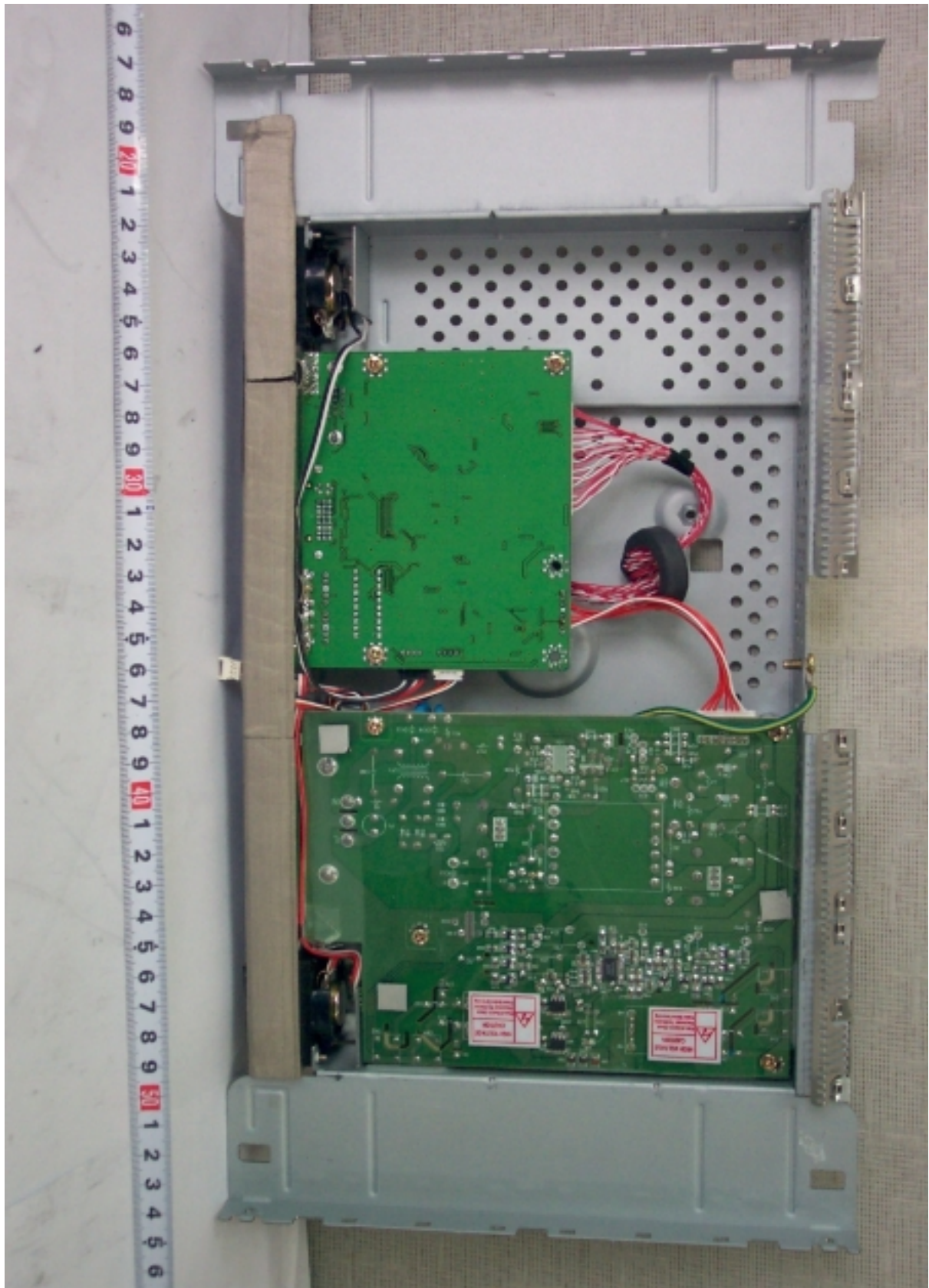


- Inside View of EUT1



- Inside View of EUT2



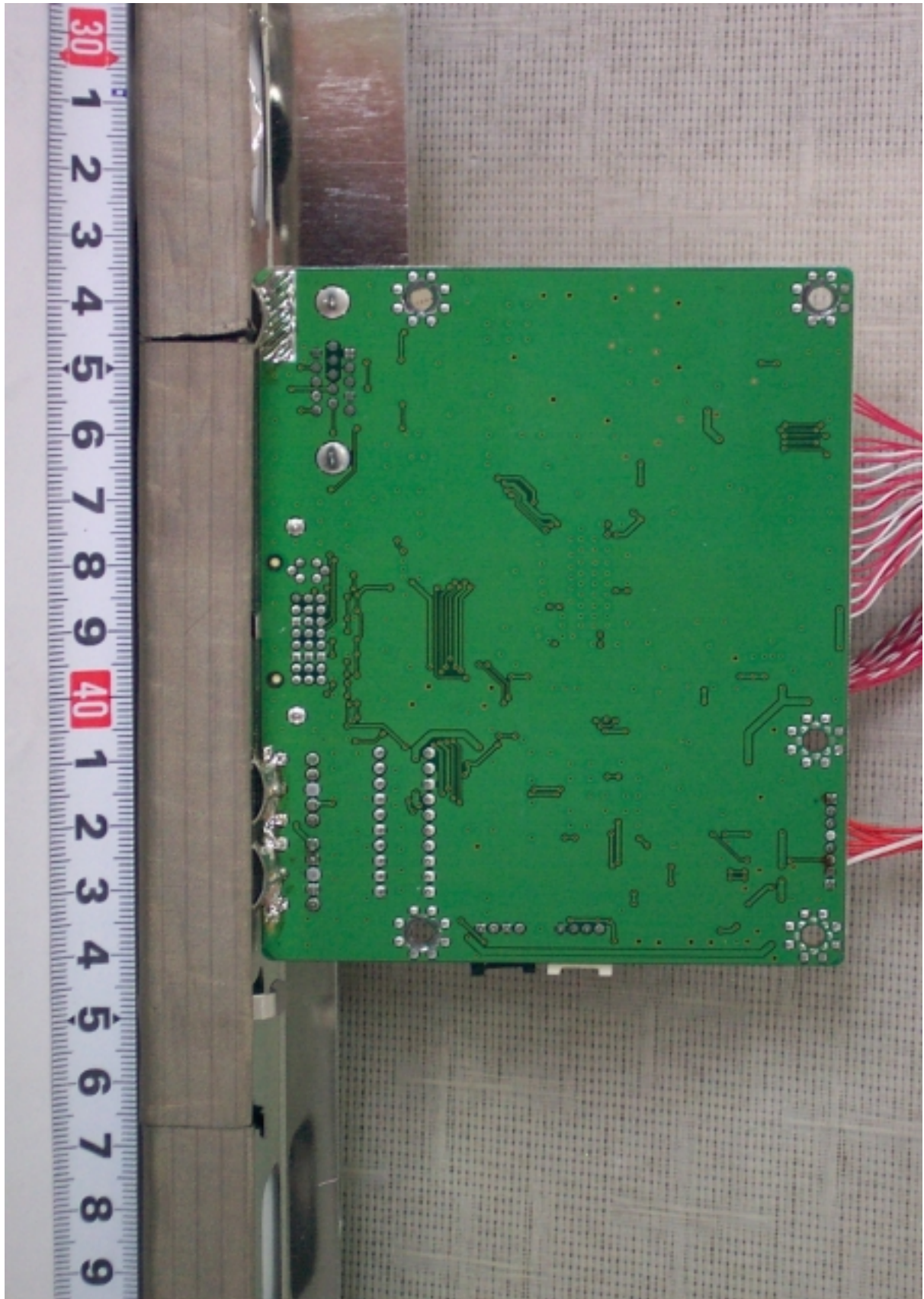


- Front View of Main Board

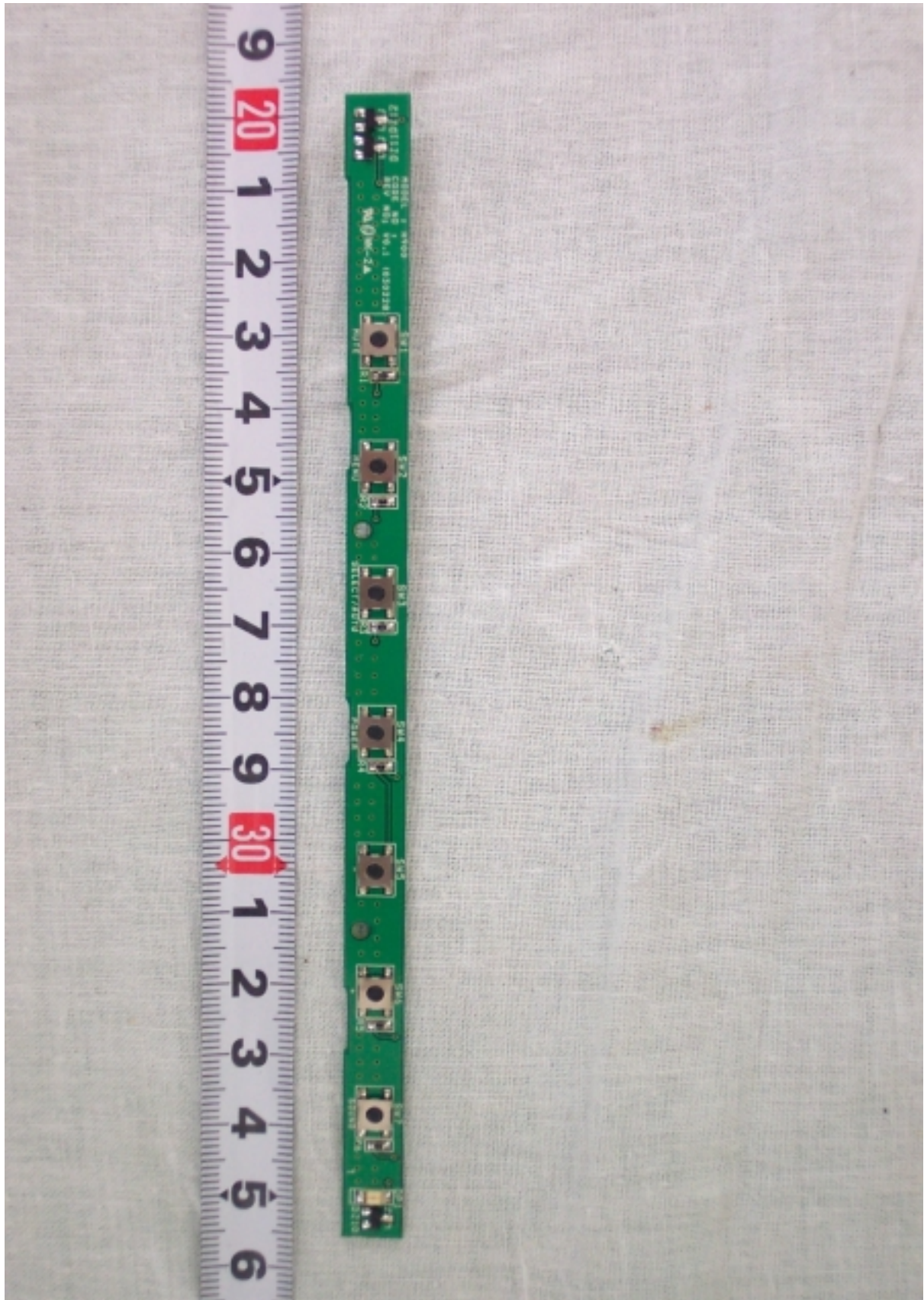




● Rear View of Main Board

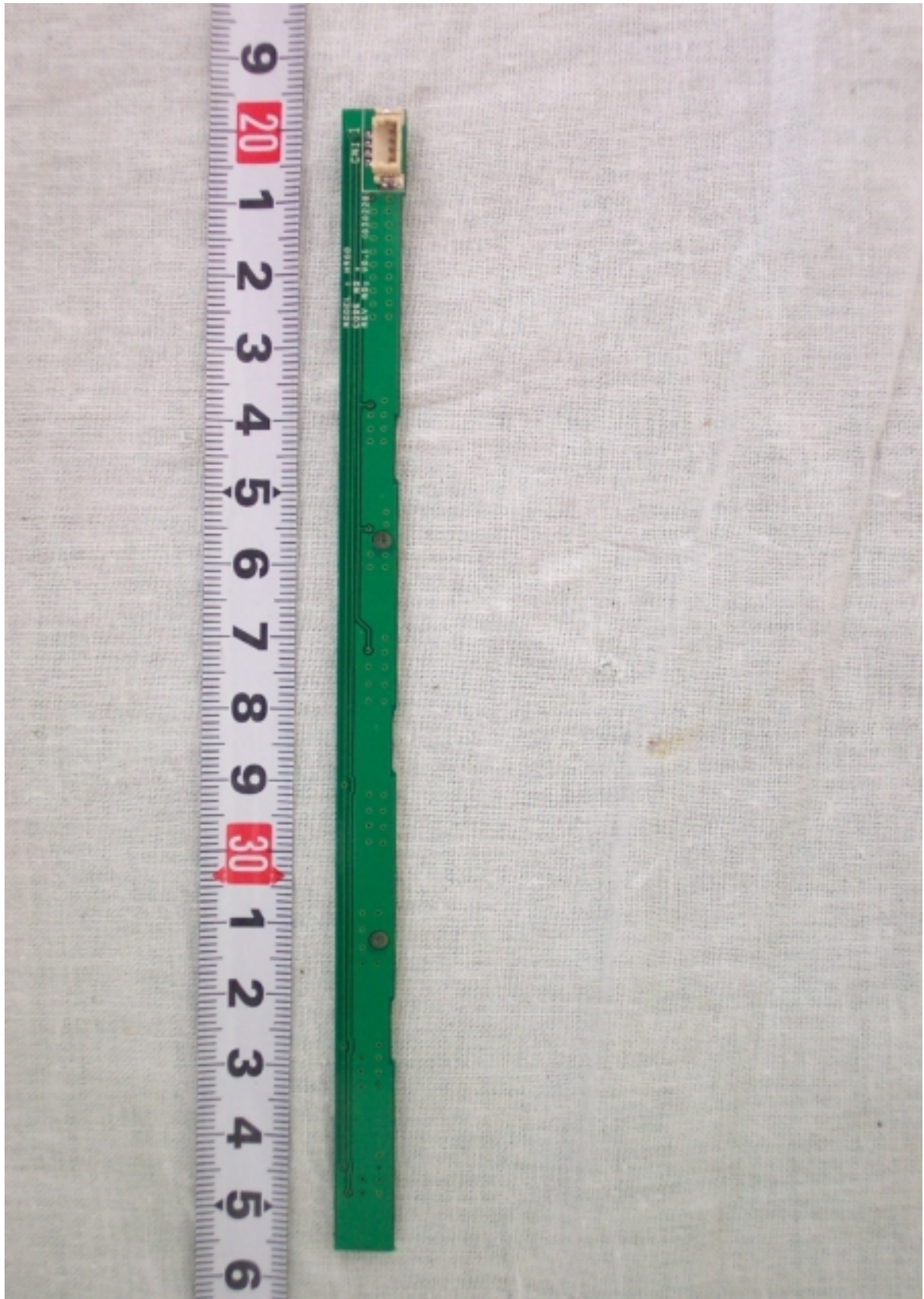


● Front View of OSD Board

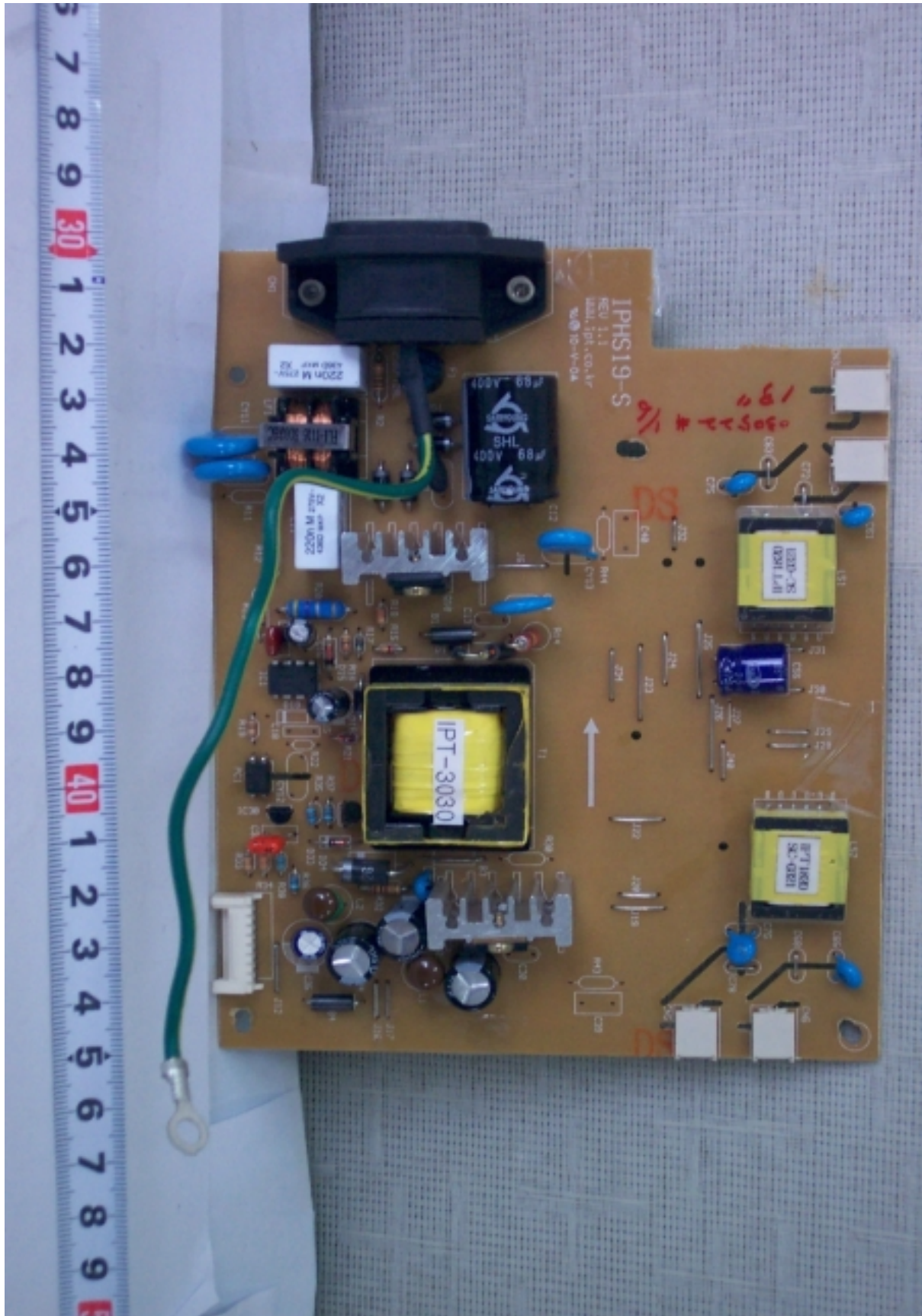




● Rear View of OSD Board

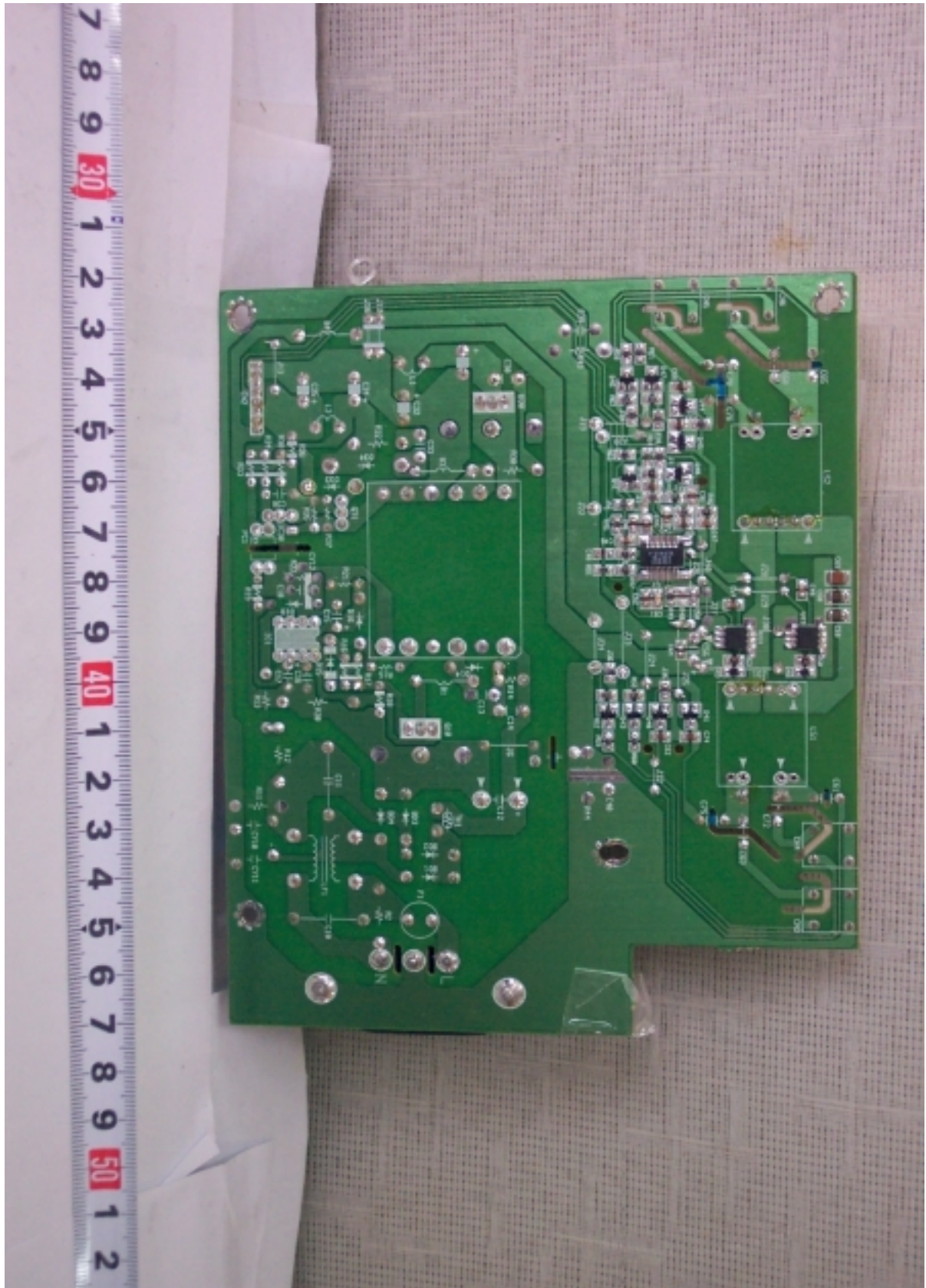


- Front View of Combo Board (IPHS19-S)





- Rear View of Combo Board (IPHS19-S)





- Front View of LCD Panel (LTM190E1-L05)



- Rear View of LCD Panel (LTM190E1-L05)

