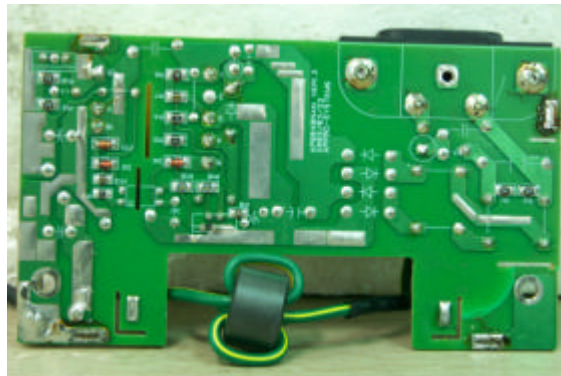
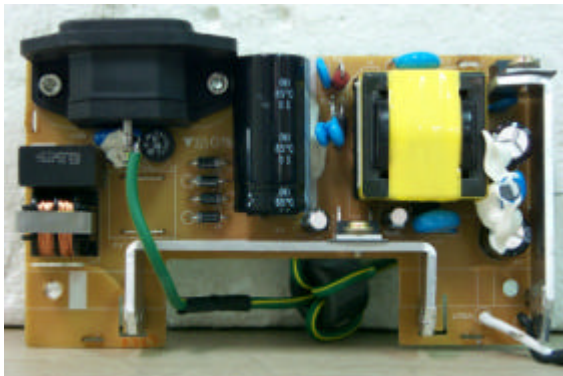


1.1 Model Differences

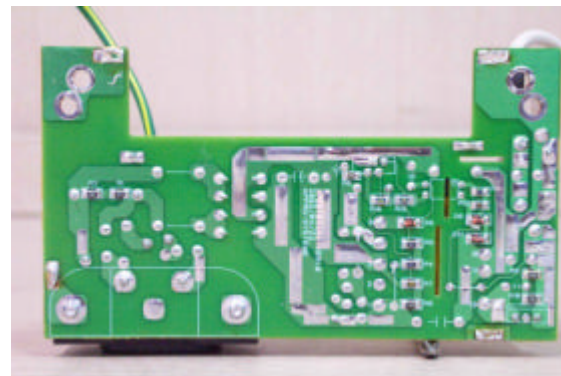
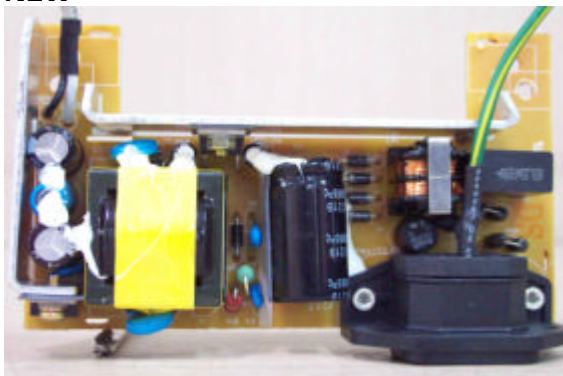
This equipment changed from previous equipment as below;

- 1) SMPS's PCB patterns were some changed. (APPRO-Systems Co., Ltd.)

OLD

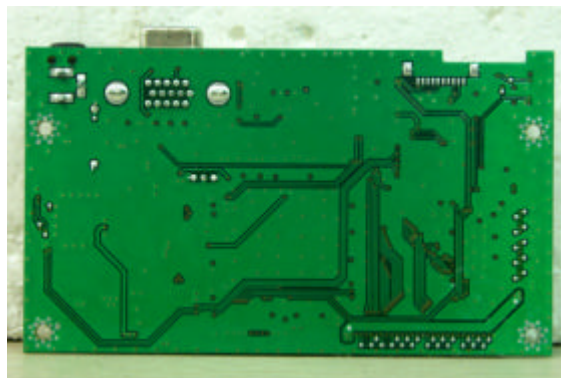
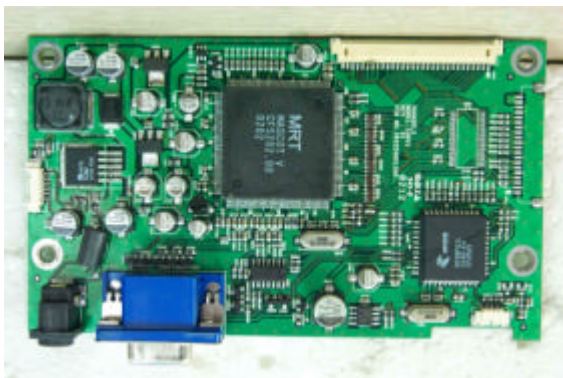


NEW

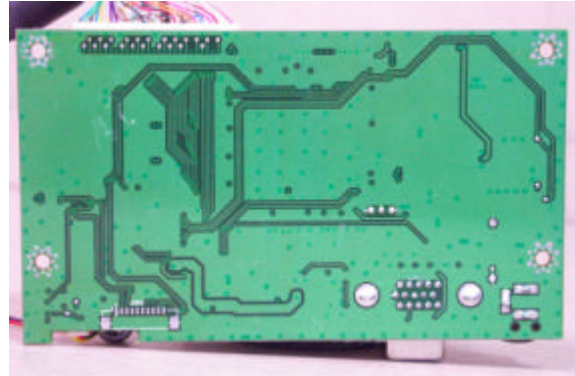
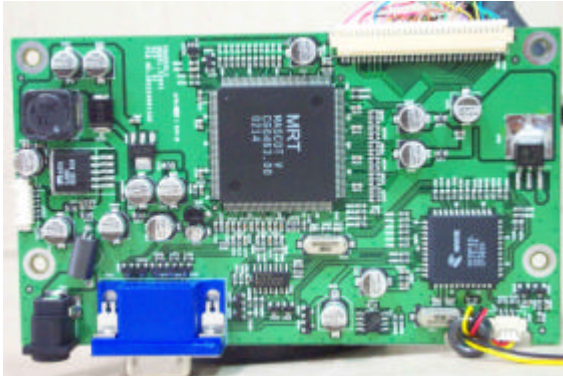


- 2) New SMPS manufacturer was added (L S Power Co., Ltd.)
See the "PCB" part of Appendix C – EUT photographs
- 3) Main board some components were moved to the other side as below;

OLD



NEW



1.2 Device Modifications

The following modifications were necessary for compliance:

Not applicable