

6

5

4

3

2

DATE OF TRACK

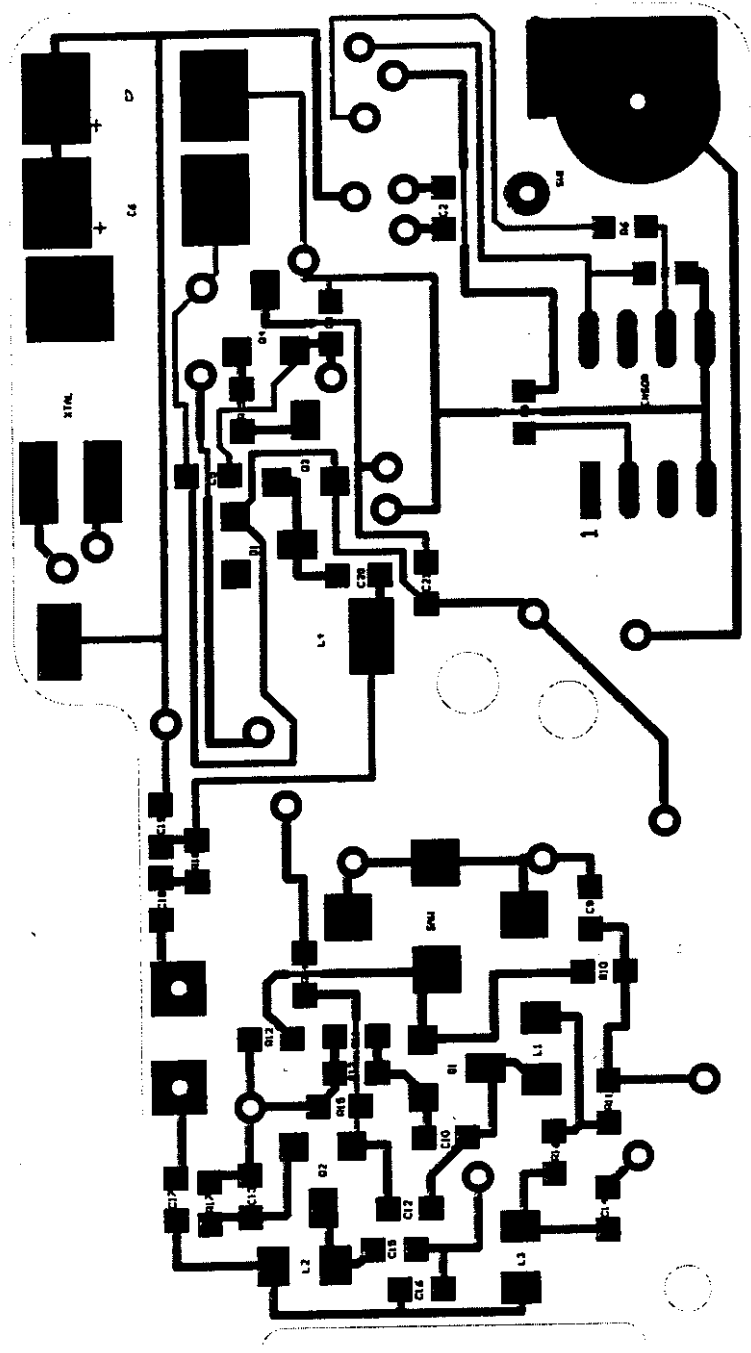


EXHIBIT H

Page 1 of 5

U of Mich file 415031- 993

NO	DESCRIPTION	ECN	DATE	1999 Eaton GEN 1B	TITLE PCB Assembly Drawing Top Layer	DRAWN S. Stinson	CHECKED D.S. Park	APPROVED <i>[Signature]</i>	DATE 24-Mar-1999
1	PCB Assembly drawing	N/A	3/3/99	3	4				
2									
3									
4									
5									
6									

DRAWING No. 90810074

CODE DWG.ND.
12 595RT-296

INDEX QUAN PART NUMBER DESCRIPTION

.206-36 THREAD (REF.)

.305-32 THREAD

9.53-8.76
.375-.345

8.41-8.25
.331-.325

ROLL STAMP
TR ID

'A'

19.43-18.67
.765-.735

.406-28 THREAD

STEM

MATERIAL: BRASS
COPPER ALLOY-353 OR 377
BRASS FINISH

.02 X 45°
BREAK EDGE

.709 ACROSS FLATS
6-REQUIRED

19.43-18.67 ϕ

.765-.735

DRILL & TAP FOR .250-28 UNF 28 THREAD 3/4 DEEP.
COUNTERBORE ϕ .25 x .259 \pm .010 DEEP

NOTE:

VALVE STEM INTERNAL PER
ISO 7442 CORE CHAMBER #1.

DWG. NOT RELEASED 3-16-99

PART NO.	BRAZIL STEM NO.	TABULATION		COMPLETE ASS'Y. TR NO.
		INCH \pm .015	MM \pm 0.38	
005700003	595RT-2	2.000	50.80	500
005720003	570RT-2	3.125	79.38	570
005730003	571RT-2	3.375	85.73	571
005730003	572RT-2	3.750	95.25	572
005730003	573RT-2	4.375	111.13	573
005730003	501RT-2	1.500	38.10	501

NOTE: SAME EXTERNAL DIMENSIONS 595-196 (TAB).

REF	CHANGE	RELEASE	A	B	C	D	E	F	G	H	I	J	K	L	M	N	FINISH	SCALE	2X
	E.C. NO.	DATE																	
	DATE																		
	UNLESS OTHERWISE SPECIFIED																		
	ANGLE DIMENSIONS 2 ϕ																		
	CHAMFER CORNERS R1D.005																		

Schradler-Bridgeport
International Inc.

EATON TRUCK
STEM

SIZE CODE DWG.ND
A 12 595RT-296

EXHIBIT H

Page 3 of 5

U of Mich file 415031- 993