

Customer	NISSAN	Description	Low Tire Pressure Sensor			Dated
Customer Drg No.	40700 CD000	Tire Pres Sensor		ISSUE	A	21-Feb-02
Customer Part No.	40700 CD000	Tire Pres Sensor		ISSUE	A	21-Feb-02
Schrader Pt No	70503064	ECN	444	ISSUE	A	21-Feb-02
MCD No	90531041	ECN	444	ISSUE	A	21-Feb-02



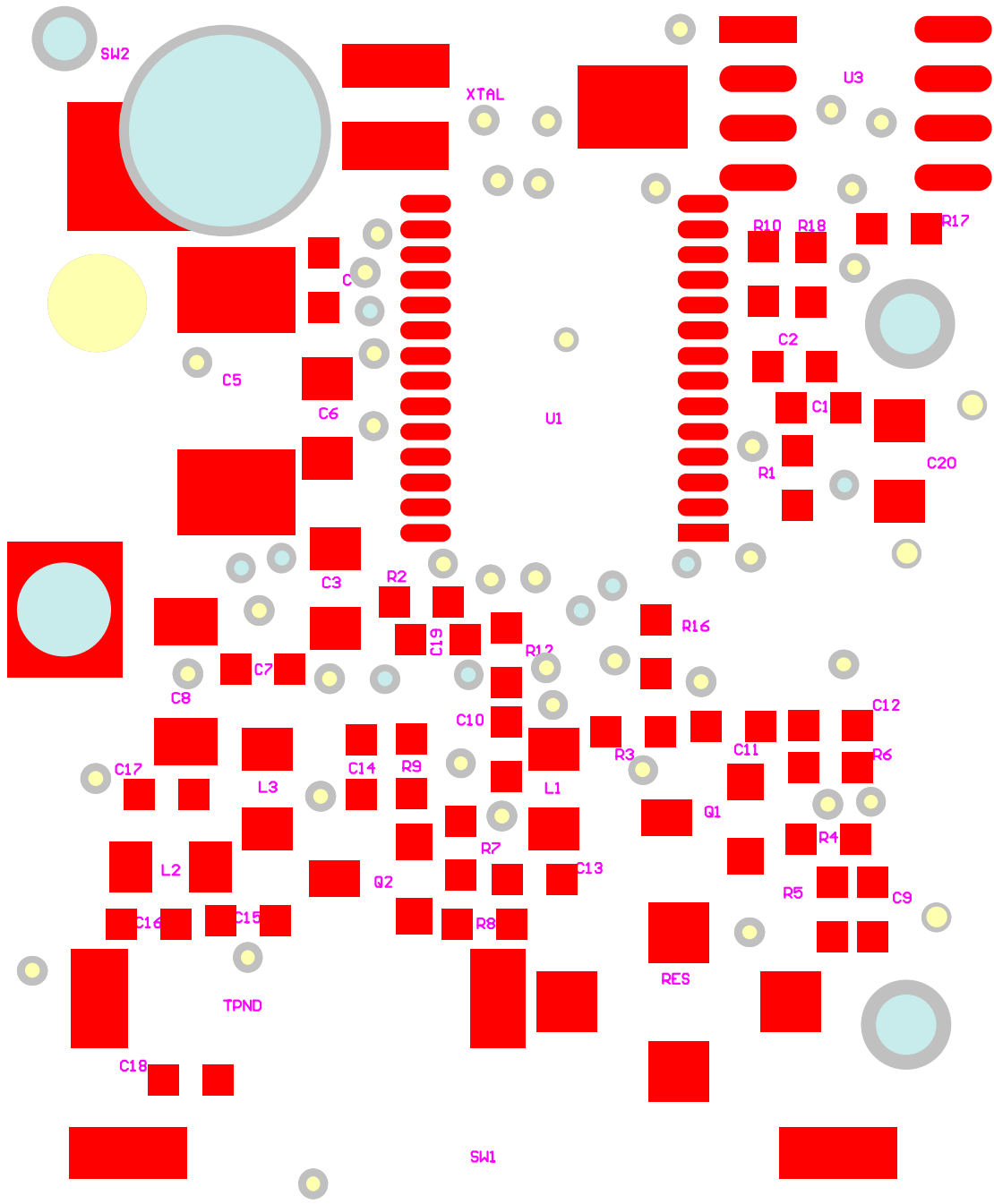
COMPONENTS

Process Stage	Assembly Pt No	Sub Ass'y Pt No	Component Part No	Added at Op'n No	Material	Insert	Identifier	Issue Level	Unit	Build Qty	Description
SMT				SMT10	30581094				A	0.0416	NissPro 24up panel with calibration code
				SMT10		30581095		P1	A	Piece	Single NissPro PCB
				SMT10		20546136		A	Piece		Z car Printed label for PCB (Code 060).
				SMT10	20547001			A	Roll		Ink Ribbon TP3000 60mm x 450m ( ADC Pt # 030002 )
		50501056						A	Piece		Z Car PCB Sub Assy including Panel Label
				SMT20	30543006			A	Grams	2.3	Solder Paste - SN62 RP11AGS89.5
			30531011	SMT30			U1	-	Piece	1	SSSM136 2001 Gen 2G ASIC
			30596005	SMT30			C1	A	Piece	1	22nf ± 10% 0603 X7R
			30596007	SMT30			C2	A	Piece	1	47nf ± 10% 0603 X7R
			30506011	SMT30			C3	A	Piece	1	180nf ± 10% 0805 X7R
			30596001	SMT30			C4	A	Piece	1	4.7nf ± 10% 0603 X7R
			30510005	SMT30			C5	A	Piece	1	100uf ± 20% C1 10v Tant
			30508001	SMT30			C6	A	Piece	1	1uf +80 % -20 % 0805 Y5V
			30596001	SMT30			C7	A	Piece	1	4.7nf ± 10% 0603 X7R
			30510010	SMT30			C8	A	Piece	1	A, 10uf ± 20% 10V Tant
			30596001	SMT30			C9	A	Piece	1	0603, ± 10%, X7R 4.7nF
			30596003	SMT30			C10	A	Piece	1	1nf ± 10% 0603 X7R
			30591005	SMT30			C11	A	Piece	1	0603, 0.25pf COG 2.7pF
			30595015	SMT30			C12	A	Piece	1	0603, ± 5% COG 15pF
			30591003	SMT30			C13	A	Piece	1	06033 ± 0.25pf COG 3.3pF
			30596003	SMT30			C14	A	Piece	1	1nf ± 10% 0603 X7R
			30591009	SMT30			C15	A	Piece	1	0603, ± 0.25pf, COG 2.2pF
			30591002	SMT30			C16	A	Piece	1	0603, ± 0.25pf COG 1pF
			30595004	SMT30			C17	A	Piece	1	0603, ± 5% COG, 12pF
			30595017	SMT30			C18	A	Piece	1	220pf ± 5% 0603 COG
			30596003	SMT30			C19	A	Piece	1	1nf ± 10% 0603 X7R
			30506014	SMT30			C20	A	Piece	1	220nf ± 10% 0805 X7R
			30588020	SMT30			R1	A	Piece	1	200k ± 5% 0603 0.1w
			30588022	SMT30			R2	A	Piece	1	100k ± 5% 0603 0.1w
			30588005	SMT30			R3	A	Piece	1	0R ± 5% 0603 0.1w
			30588011	SMT30			R4	A	Piece	1	68K ± 5% 0603 0.1w
			30588018	SMT30			R6	A	Piece	1	200R ± 5% 0603 0.1w
			30588043	SMT30			R7	A	Piece	1	8.2K ± 5% 0603 0.1w
			30588002	SMT30			R8	A	Piece	1	4.7K ± 5% 0603 0.1w
			30588008	SMT30			R9	A	Piece	1	27R ± 5% 0603 0.1w
			30588016	SMT30			R10	A	Piece	1	11K ± 5% 0603 0.1w
			30588005	SMT30			R16	A	Piece	1	0R ± 5% 0603 0.1w
			30588002	SMT30			R17	A	Piece	1	4.7K ± 5% 0603 0.1w
			30588012	SMT30			R18	A	Piece	1	10M ± 5% 0603 0.1w
			30577002	SMT30			L1	A	Piece	1	27nH ± 10% 0805
			30577017	SMT30			L2	A	Piece	1	180nH ± 10% 0805
			30577005	SMT30			L3	A	Piece	1	39nH ± 10% 0805
			30584001	SMT30			Saw Res	A	Piece	1	R02073A 315MHz
			30555003	SMT30			Q1	A	Piece	1	BFR92A RF Transistor - PHILIPS
			30555003	SMT30			Q2	A	Piece	1	BFR92A RF Transistor - PHILIPS
			30534003	SMT30			XTAL	A	Piece	1	Crystal 32.768Khz MS1V-TK ±100ppm
			30584001	SMT30			Saw Res	A	Piece	1	R02073A 315MHz

Customer	NISSAN	Description	Low Tire Pressure Sensor			Dated
Customer Drg No.	40700 CD000	Tire Pres Sensor		ISSUE	A	21-Feb-02
Customer Part No.	40700 CD000	Tire Pres Sensor		ISSUE	A	21-Feb-02
Schrader Pt No	70503064	ECN	444	ISSUE	A	21-Feb-02
MCD No	90531041	ECN	444	ISSUE	A	21-Feb-02

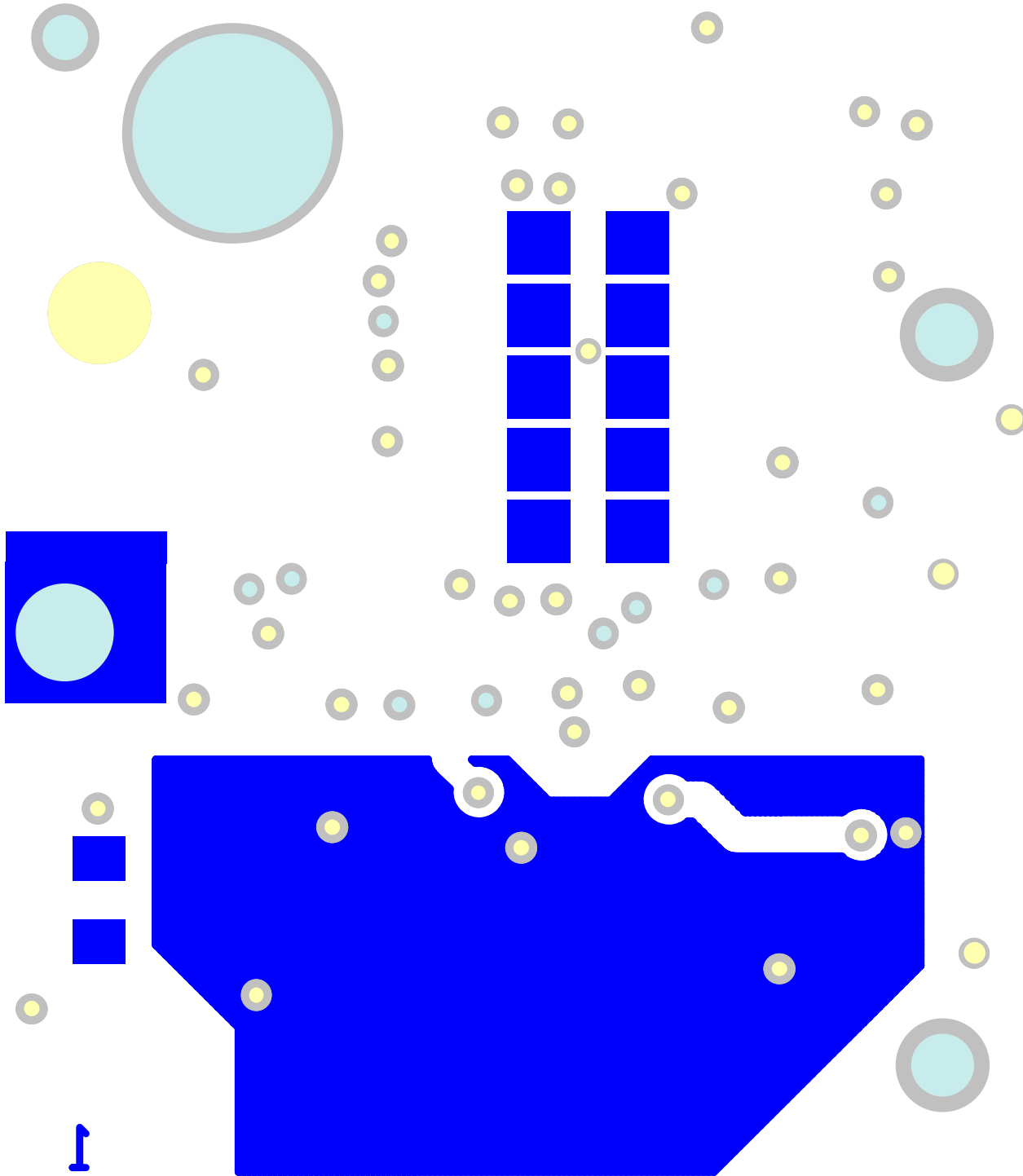


			30582001	SMT30			Sensor, U3	C	Piece	1	NPP-301 (30psi) SO8
			30580013	SMT70			SW2	A	Piece	1	Ball & Spring Roll Switch 3098-1-000 ISSUE 2
			30543007	SMT70				A	Grams	1	60EN ECOSOL105 (0.7Dia) Solder
		50501057						A	Piece	1	Z-Car PCB Populated & Calibrated
Mech Core						20522006		B	Piece	1	Valve Stem
				MCH110	40501052			A	Piece	1	Z Car Enclosure Undrilled (Blue, 20 degree, std valve, large grommet)
			40501053	MCH110							Z Car Enclosure Drilled (Blue, 20 degree, std valve, large grommet)
			40506002	MCH120				A	Piece	1	Core 5405EN
			10542006	MCH130				G	Piece	1	Grommet 5976001 (5976.5)
			20528003	MCH140				A	Piece	1	Aluminium Cap, 7572 AL, Red Seal, Natural Anodised
				MCH150	20546033			A	Roll		Small Bar Code Labels on reel
			20546032	MCH150				A	Piece	1	Small Printed Bar Coded Label
				MCH150	20547004			A	Roll	0.001	Ink Ribbon ( Topex ) E025360X ( 25mm x 360m )
		60501030						A	Piece	1	Complete Sub-Assembly - Z Car
Final Ass'y			10542001	MCH160				C	Piece	1	Sensor Seal
			30571004	MCH170				10	Piece	1	Battery CR2450NT199 500mAH
			50501057	MCH180				A	Piece	1	Z Car PCB Assy Cct + Caslibration Code 060
			20562009	MCH190				B	Piece	1	PCB Screw M2.0 x 5 ( Tin Plated ) BT3P
			30543007	MCH210				A	Grams	1.35	ECOSOL 105 Solder 60/40
				FIN220	20565009			2	Grams	5.0	Resin ER1448-A (200kg)
				FIN220	20565010			2	Grams	2.0	Hardener ER1448-B (200kg)
		20565008		FIN220					Grams		Epoxy Resin ER 1449 ( Electrolube )
				FIN240				A	Piece	1	TPMS Sensor
				FIN240	20546070			B	Roll		ASIC Barcode label on reel ( 30 x 13.5 FAST OFF )
			20546077	FIN240				A	Piece	1	Printed ASIC Barcode label
				FIN240	20547001			A	Roll		Ink Ribbon TP3000 60mm x 450m ( ADC Pt # 030002 )
			20546049	FIN240				A	Piece	1	FCC Printed Label GM/JCI/Nissan
	70503064							A	Piece	1	TPMS Sensor
Packing		40508018						A	Piece	1.0000	Packing Sub Assy Z Car
			8051709	FIN250				A	Piece	0.0083	Shipping Box Base
			80517010	FIN250				A	Piece	0.0083	Shipping Box Lid
			80517023	FIN250				A	Piece	0.1110	9 way divider
			80517024	FIN250				A	Piece	0.0909	11 way divider
				FIN250	20546036			B	Roll		Box Label on Reel ( 101.5 x 76 )
			20546141	FIN250				A	Piece	0.0167	Z car Printed Bar Coded Box Label
				FIN250	20547002			A	Roll		Ink Ribbon TP1000 110mm ( ADC Pt # 010008 )
Issued By:-			Date:-			Checked By:-			Date :-		



UNCONTROLLED COPY  
27/02/02 AW

UNCONTROLLED COPY  
27/02/02 AW



Nispro  
1