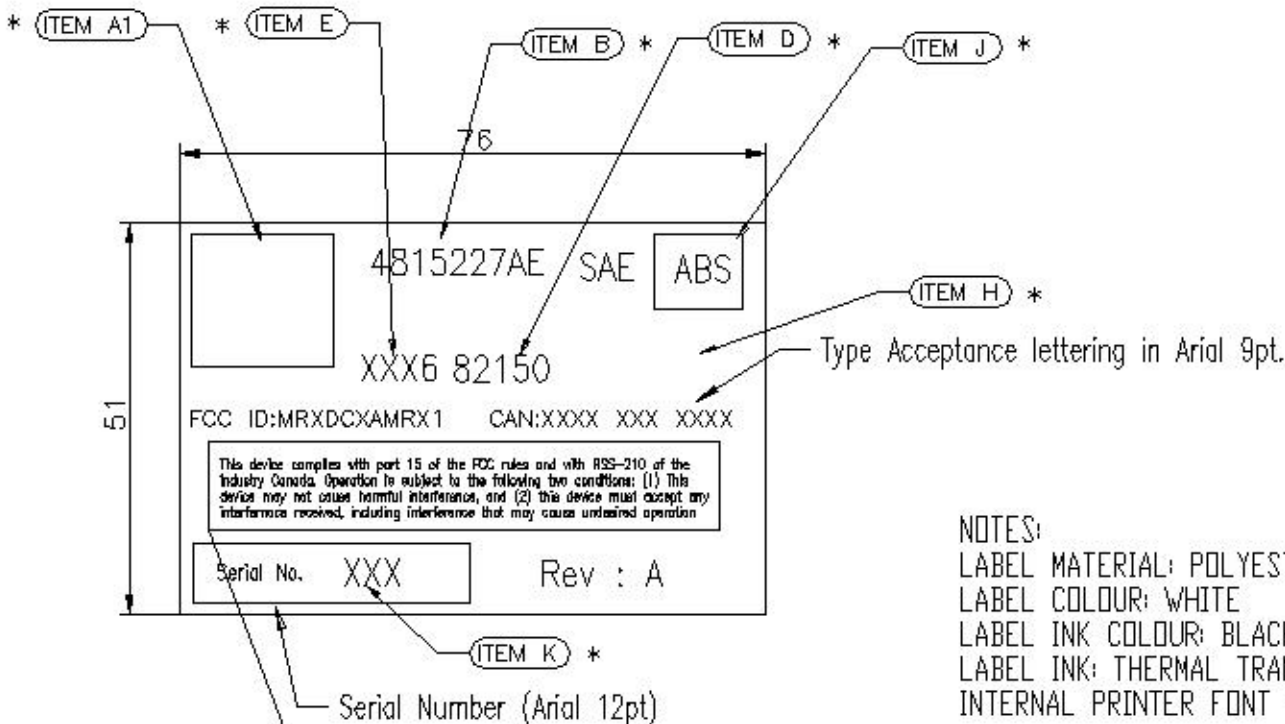


DRG. No.



Verbage in Arial 6pt, the minimum desired/allowable size
Taken from FCC Tx Paperwork

NOTES:

- LABEL MATERIAL: POLYESTER
- LABEL COLOUR: WHITE
- LABEL INK COLOUR: BLACK
- LABEL INK: THERMAL TRANSFER PRINTABLE
- INTERNAL PRINTER FONT = WL WITH SMOOTHING 28W x 44L DOT MATRIX.

LEGEND

ITEM	DESCRIPTION
A1	PENTASTAR ART WORK CHRYSLER
B	CHRYSLER PART NUMBER (ARIAL 12pt)
D	SUPPLIER CODE (ARIAL 14 pt)
E	DAILY DATE CODE, XXX + LAST NUMBER OF YEAR. (INTERNAL PRINTER FONT)
H	SCHRADER-BRIDGEPORT LOGO
J	PLASTIC RECYCLING CODE (ARIAL 14pt)
K	SERIAL NUMBER NUMERALS (INTERNAL PRINTER FONT)

B	FCC NUMBER ADDED	373	04/06/01
A	RELEASE FOR PRODUCTION	318	5/1/01
ISSUE	DESCRIPTION	ECN	DATE

PART NUMBER
20546069

TITLE
CHRYSLER (433) RECEIVER
LABEL

DRAWN	CHECKED	APPROVED	DATE
DRAWING No. 90502051			