

hp

REF 107.0 dB $\mu$ V

AT 10 dB

MKR 2.25 MHz

-62.51 dB

PEAK

LOG

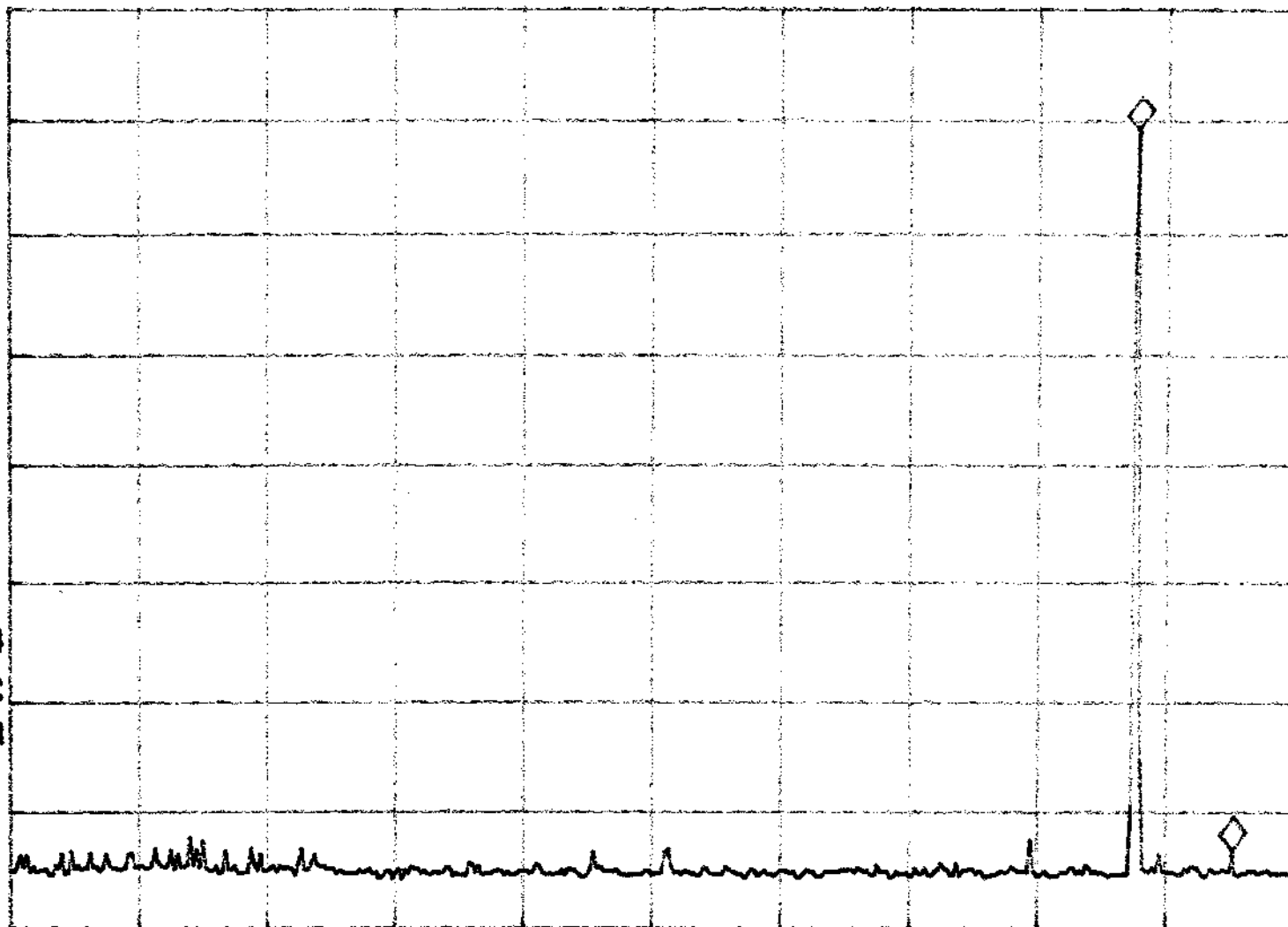
10

dB/

VA SB

SC FC

CORR



START 900.00 MHz

#RES BW 10 kHz

STOP 930.00 MHz

#VBW 3 MHz

SWP 900 msec

hp

REF 107.0 dB $\mu$ V

AT 10 dB

MKR -25.43 MHz

-62.40 dB

PEAK

LOG

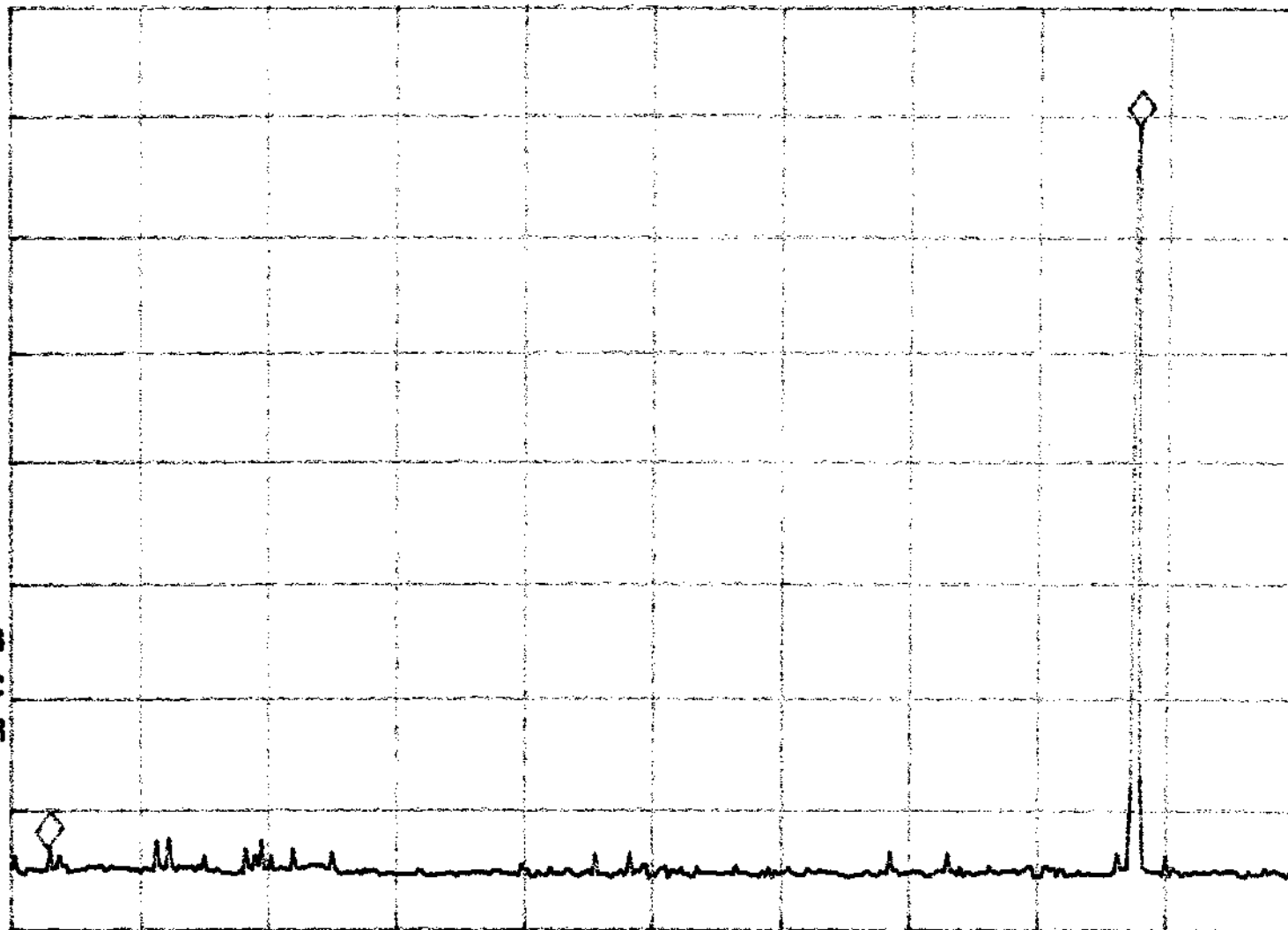
10

dB/

VA SB

SC FC

CORR



START 900.00 MHz

#RES BW 10 KHz

STOP 930.00 MHz

#VBW 3 MHz

SWP 900 msec