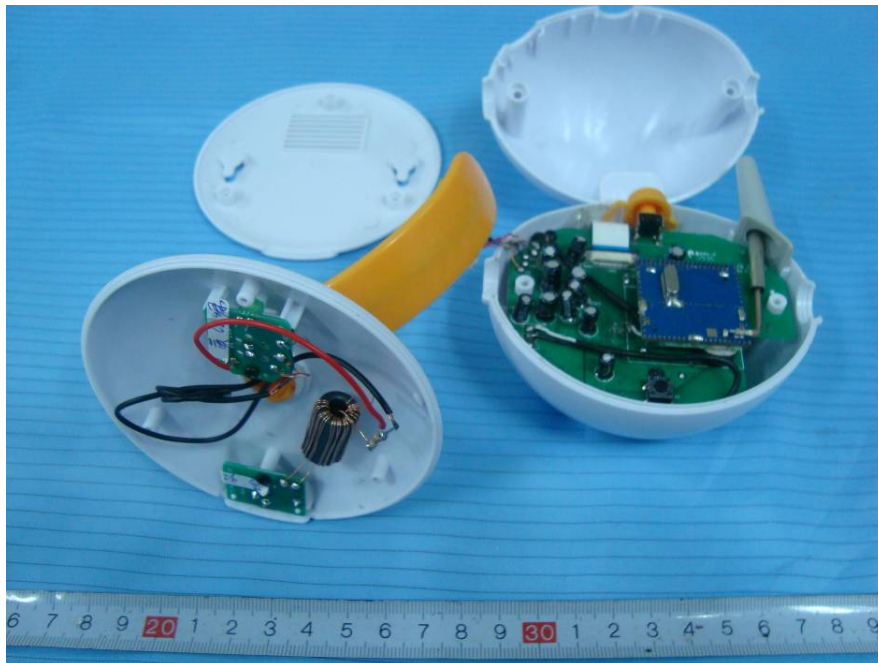
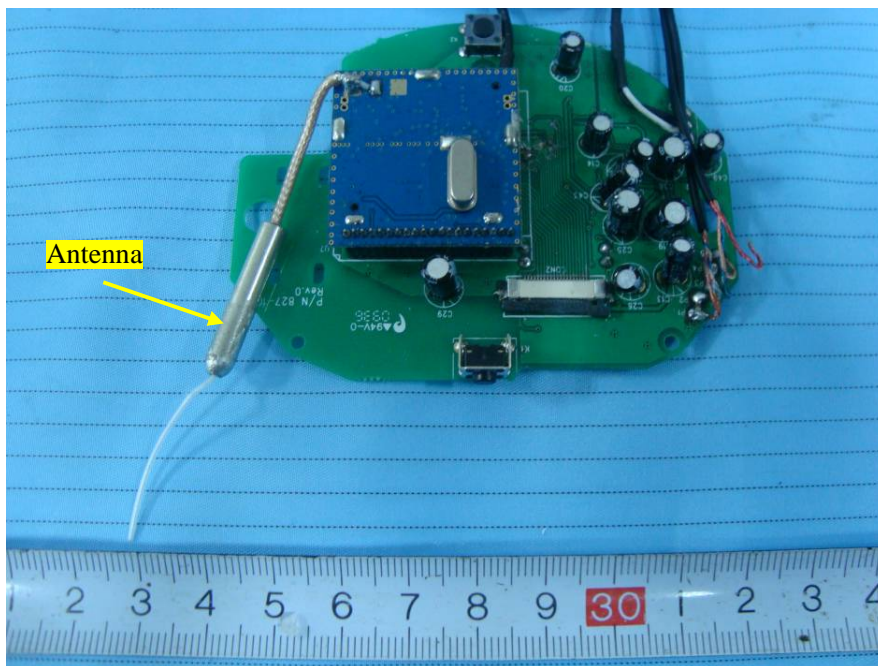


EXHIBIT C - EUT INTERNAL PHOTOGRAPHS

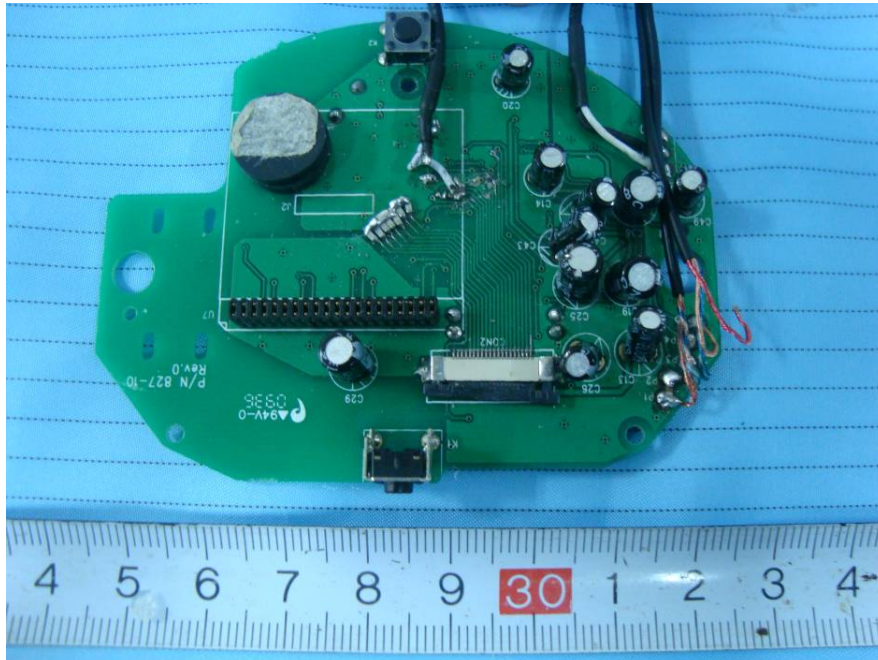
EUT – Cover off View



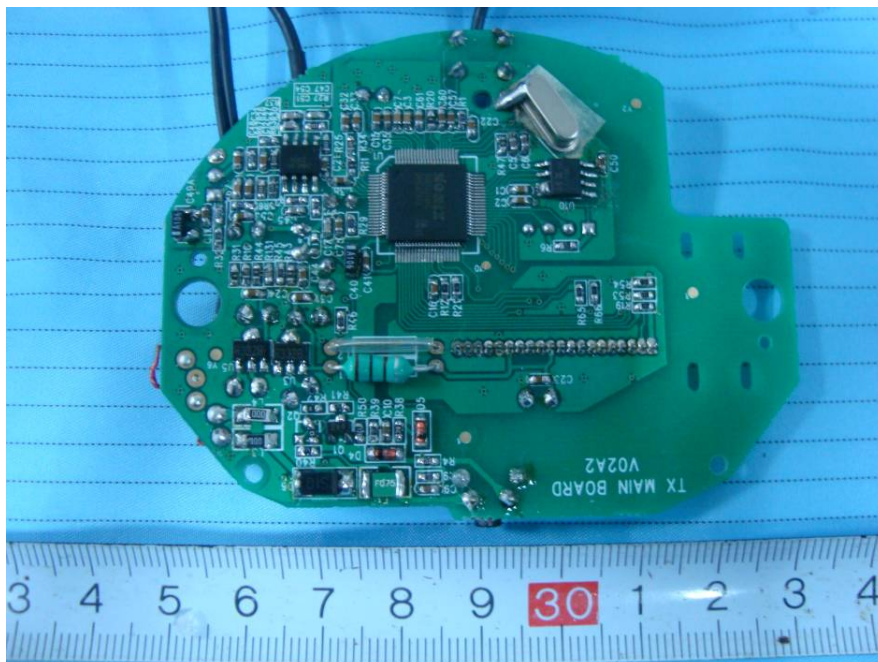
EUT – Main Board with RF Module Top View



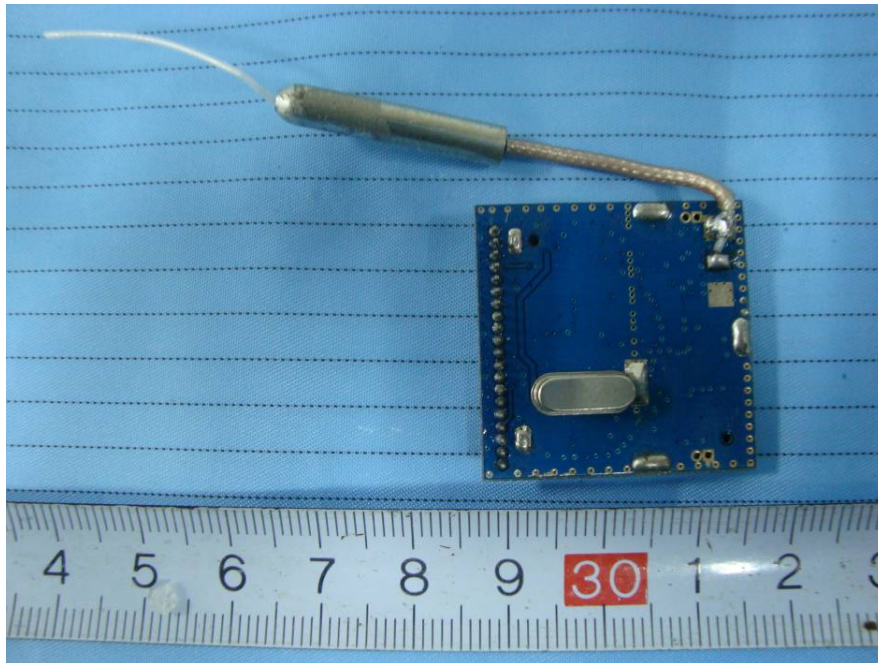
EUT – Main Board without RF Module Top View



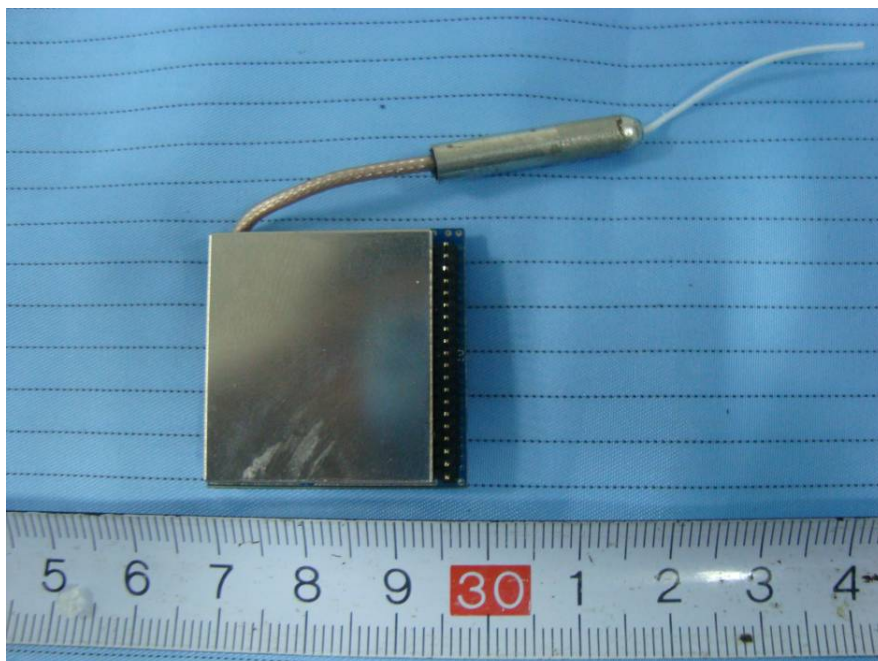
EUT – Main Board Bottom View



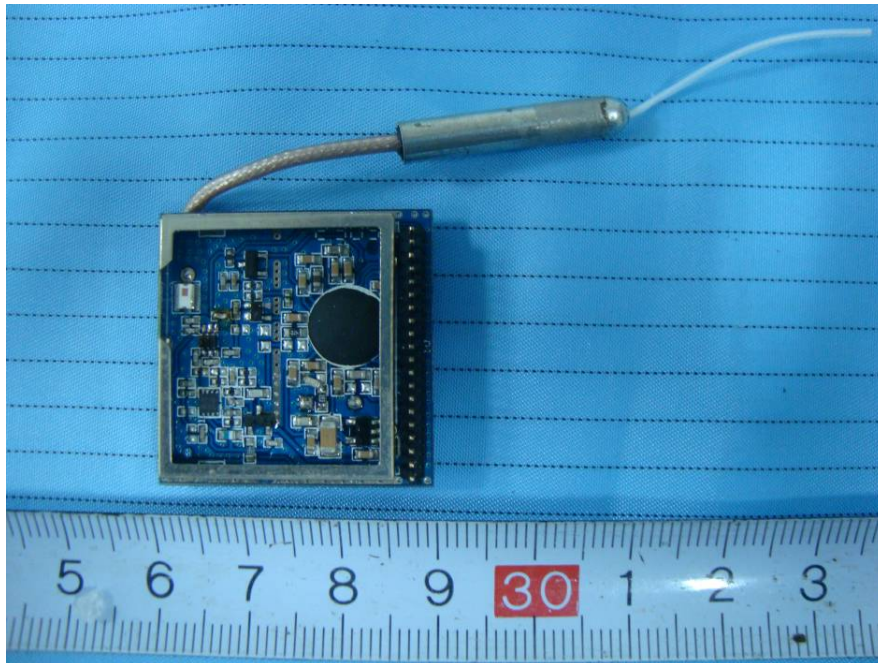
EUT – RF Module Top View



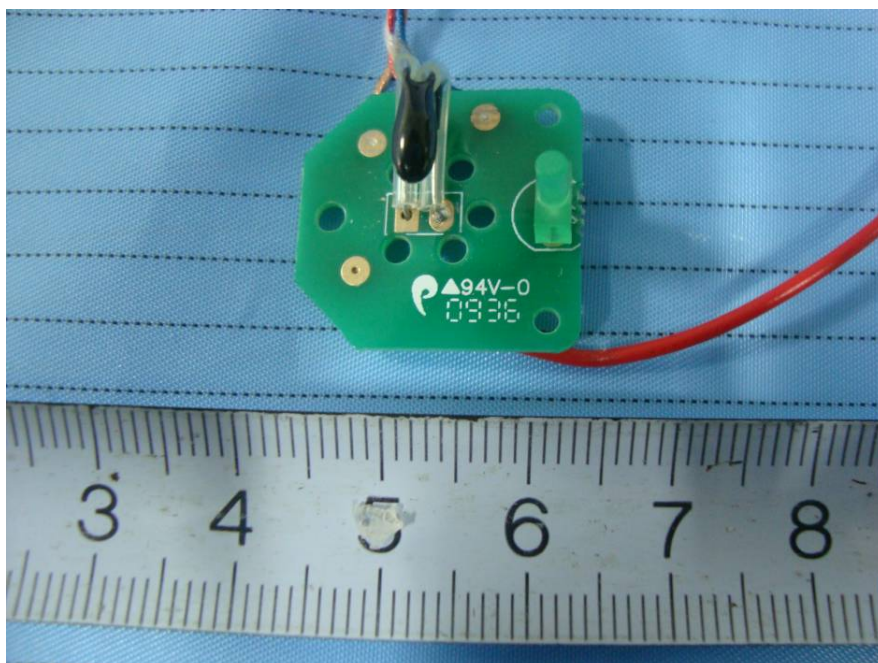
EUT – RF Module Bottom View



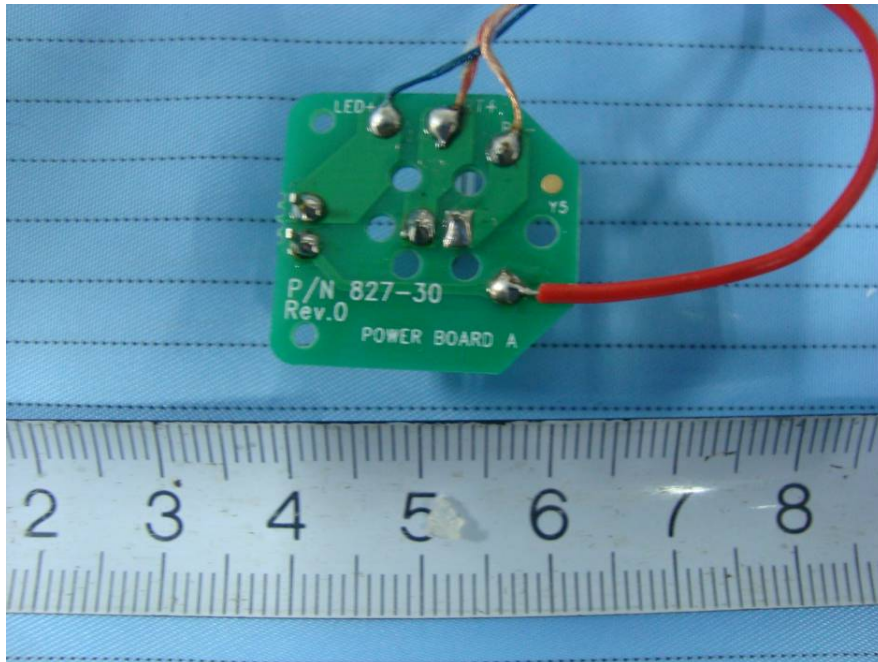
EUT – RF Module Bottom Cover off View



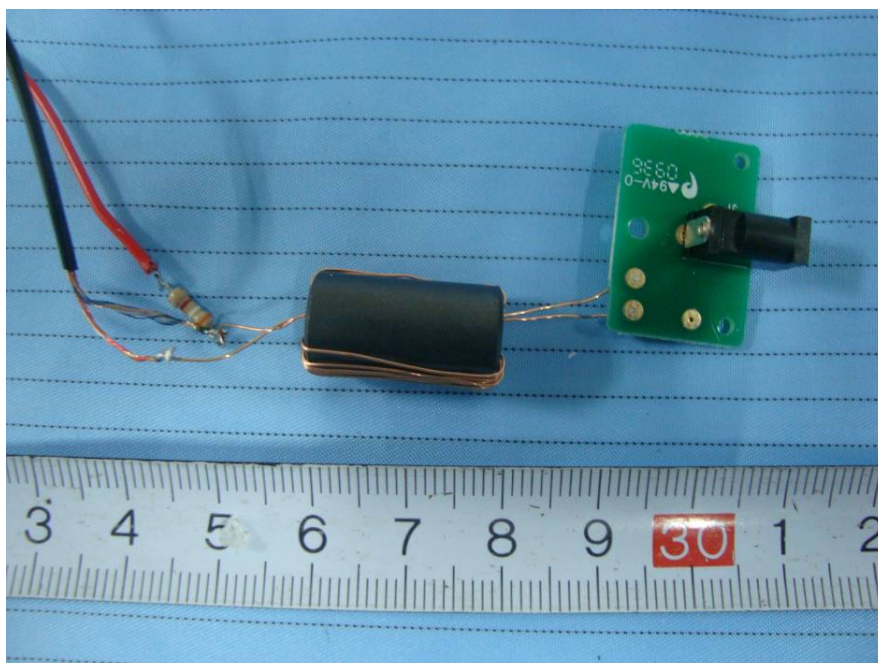
EUT – Power Board A Top View



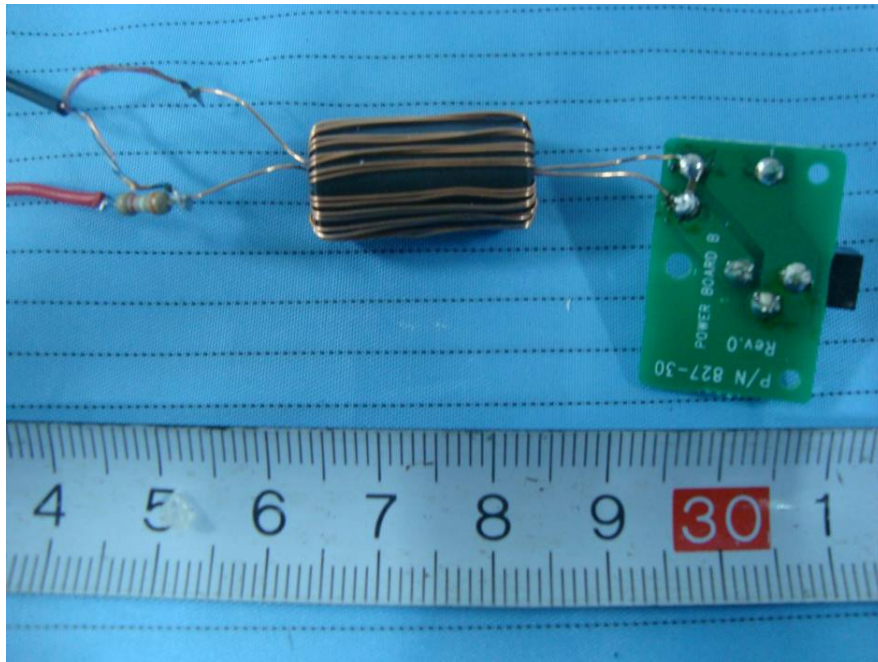
EUT – Power Board A Bottom View



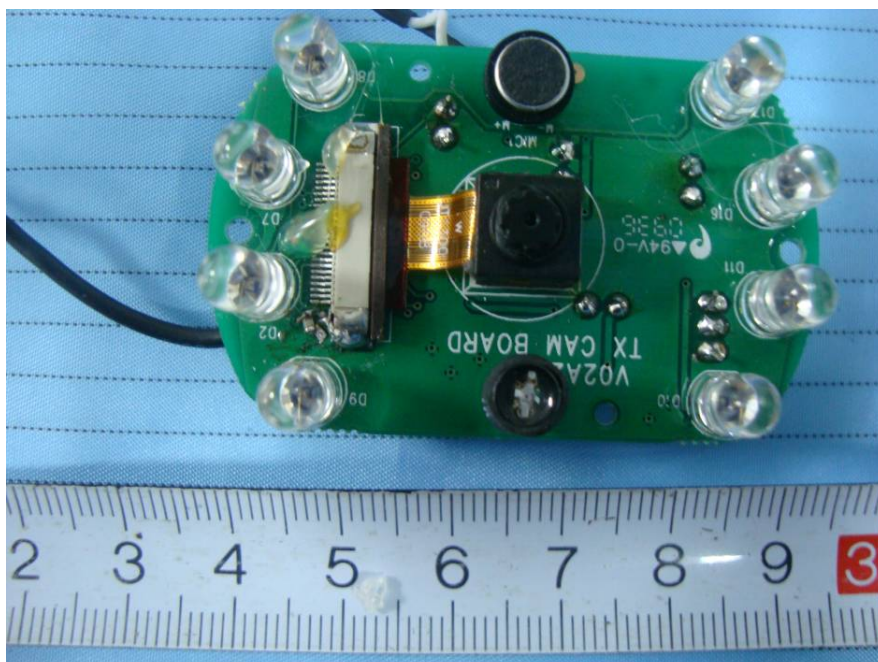
EUT – Power Board B Top View



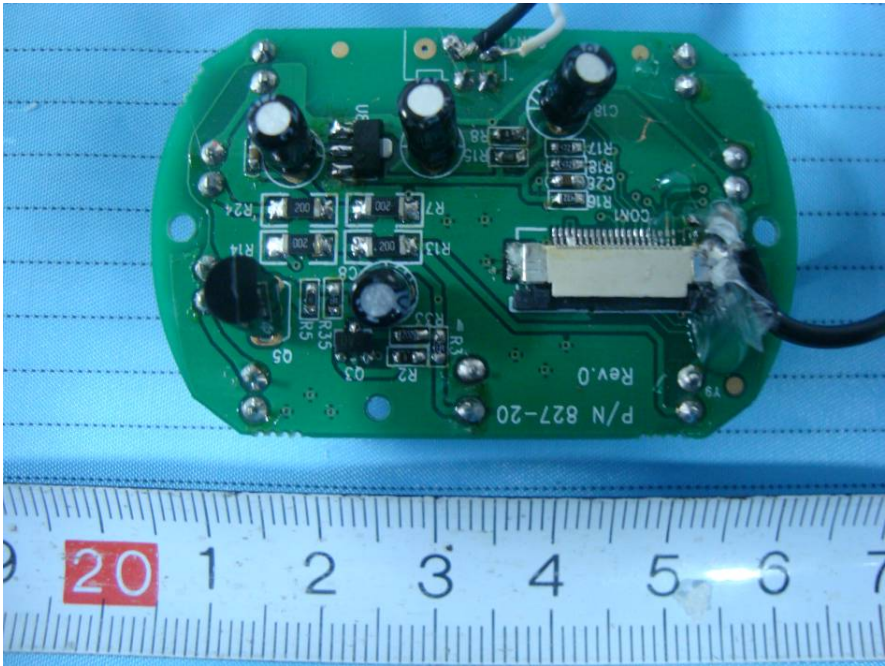
EUT – Power Board B Bottom View



EUT – Camera Board Top View



EUT – Camera Board Bottom View



The image shows the bottom view of a green printed circuit board (PCB) for a camera. The board is populated with various electronic components, including several large electrolytic capacitors, numerous surface-mount resistors and capacitors, and a central integrated circuit. A white ribbon cable is connected to a connector on the right side of the board. The board is placed on a blue surface, and a white ruler with black markings is positioned below it for scale. The ruler shows measurements in inches (0 to 7) and centimeters (0 to 20). The text "P/N 827-20 Rev.0" is printed on the bottom right of the PCB.

